



Connection success.



Wifi



Internet

Connected. Good signal.



Ethernet



Wifi

Normal signal



4G

Normal signal



aGate solar rated power

4.7kW >

### Accessories installed

aPbox

Meter kit

Neither

Allow aGate Solar export to the grid?



Max power export to the grid

No Power limit >

leo@oshathaikitchennc.com

Select the financier \*

N/A

Select

Gre

### aGate X binding successful

- Initial password:  
leo
- The aGate X has been successfully bound to  
leo@oshathaikitchennc.com
- Please check whether the user can log in to the app and see the operating status of the FHP.

Confirm

### Solar Setting

Is aGate solar installed? **Yes**

aGate solar rated power **4.7kW**

Accessories installed **Neither**

Allow aGate Solar export to the grid? **Yes**

Max power export to the grid **No Power limit**

### Location

Address **1153 Christian Light Rd**

Address ?

Country **United States**

State/Territory/Province **North Carolina**

City **Farmington**

ZIP Code **27525**



Commission



Tools



History



Settings

### Tip

Congratulations! You have completed the commissioning. Upload the survey pictures now.

Cancel

Confirm

Grid 0.3 kW

aPower(s) 0.0 kW

aGate

Fault

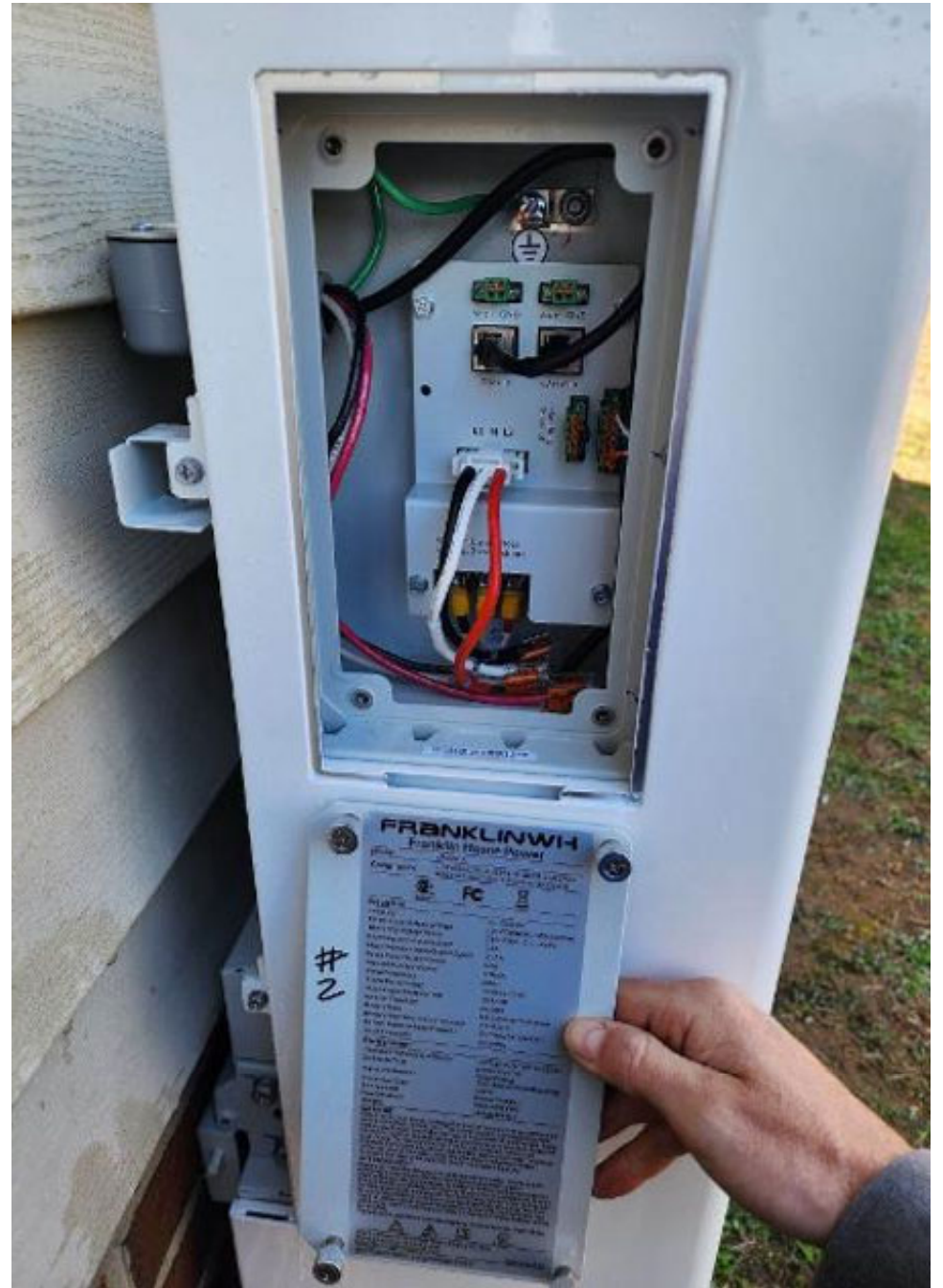
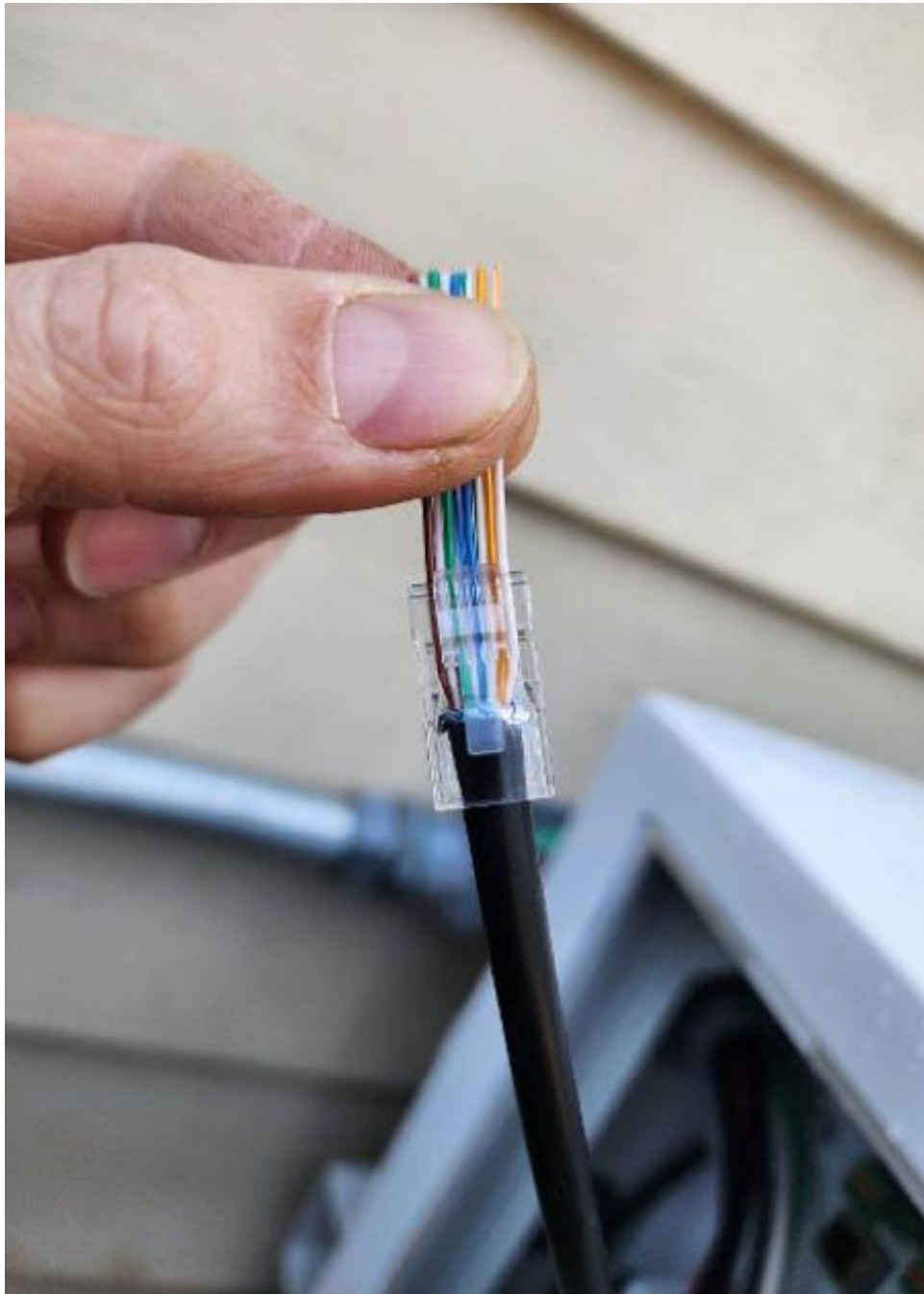


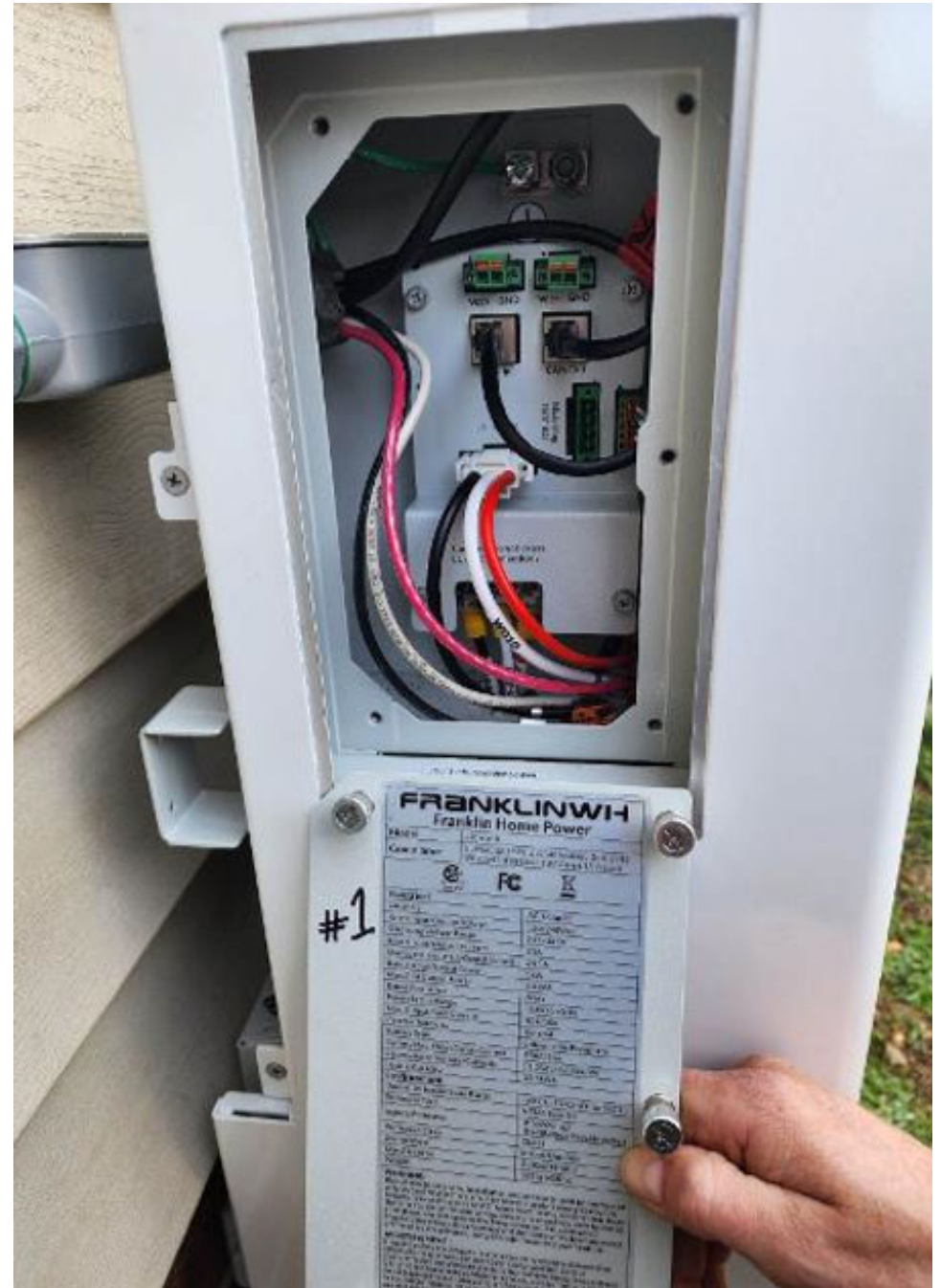
System firmware update is completed.

You can proceed to the next step

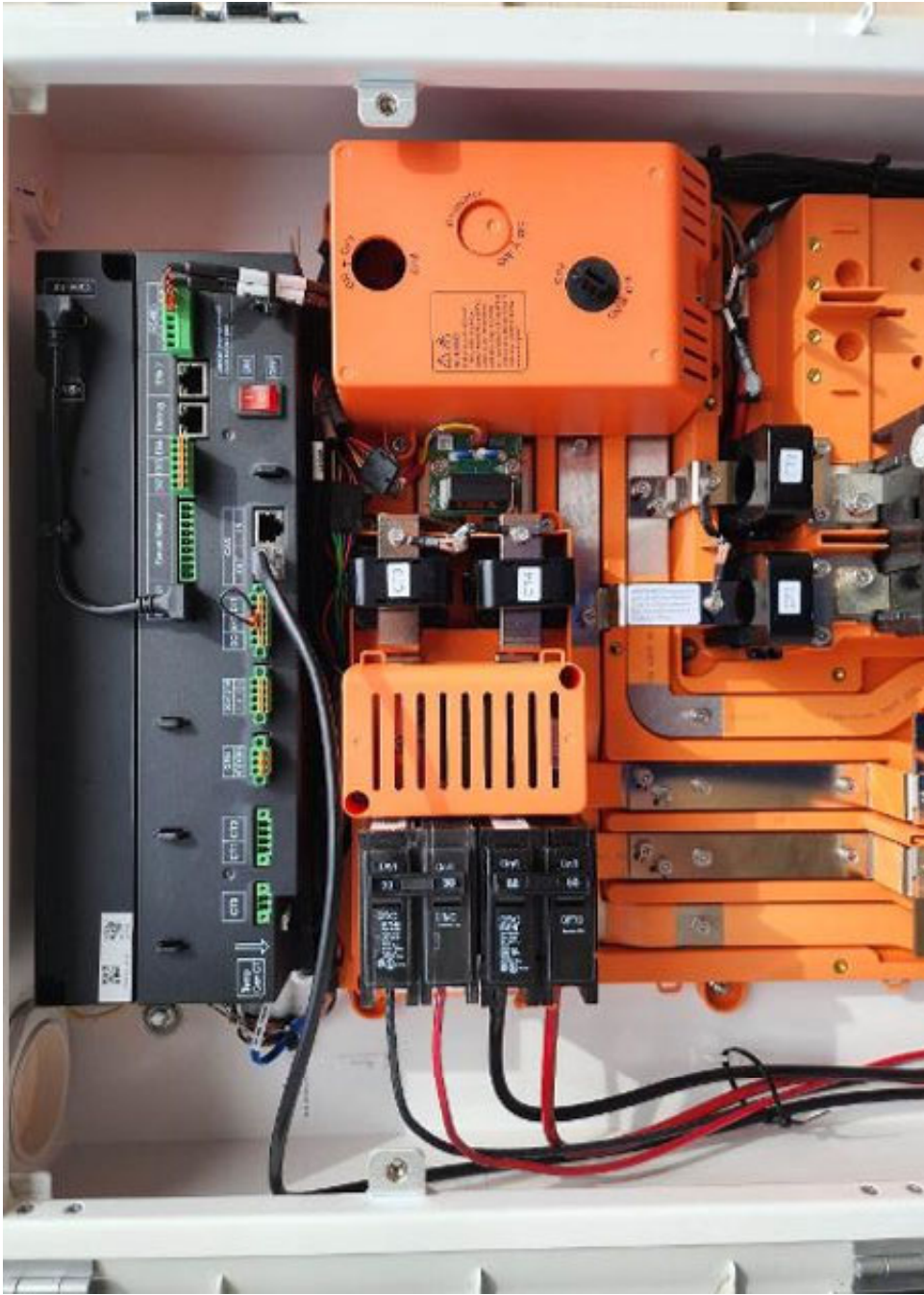
Confirm



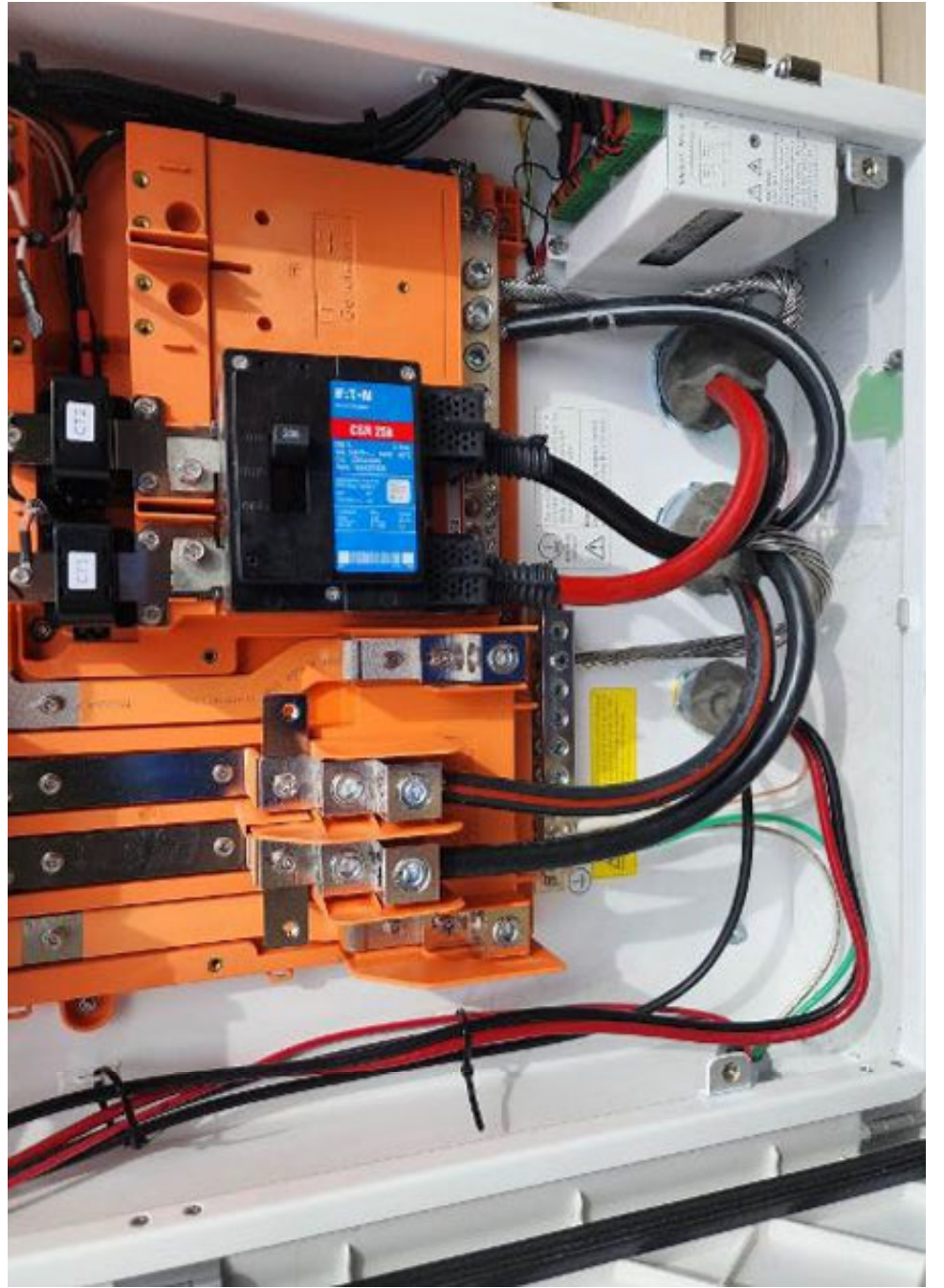
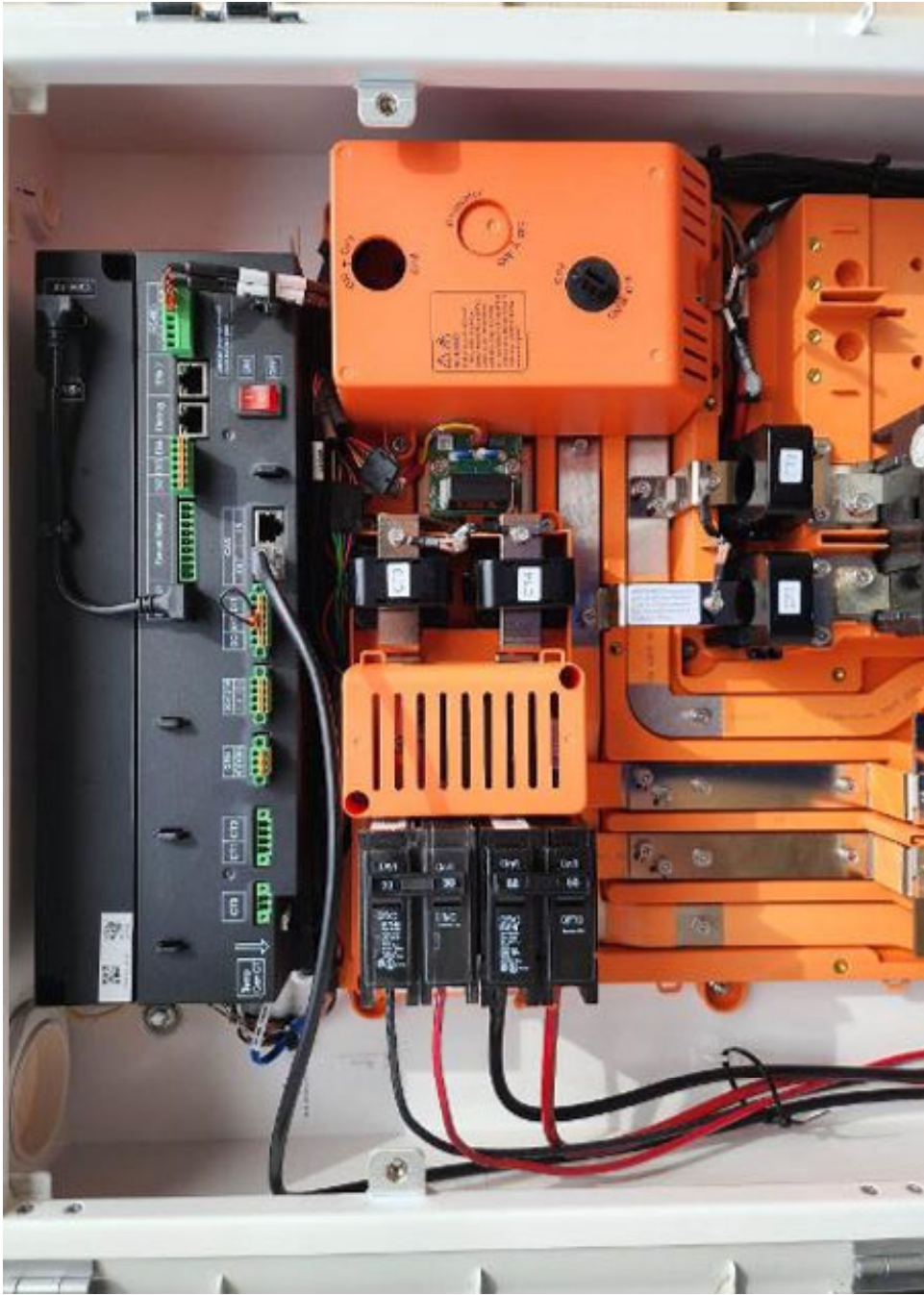


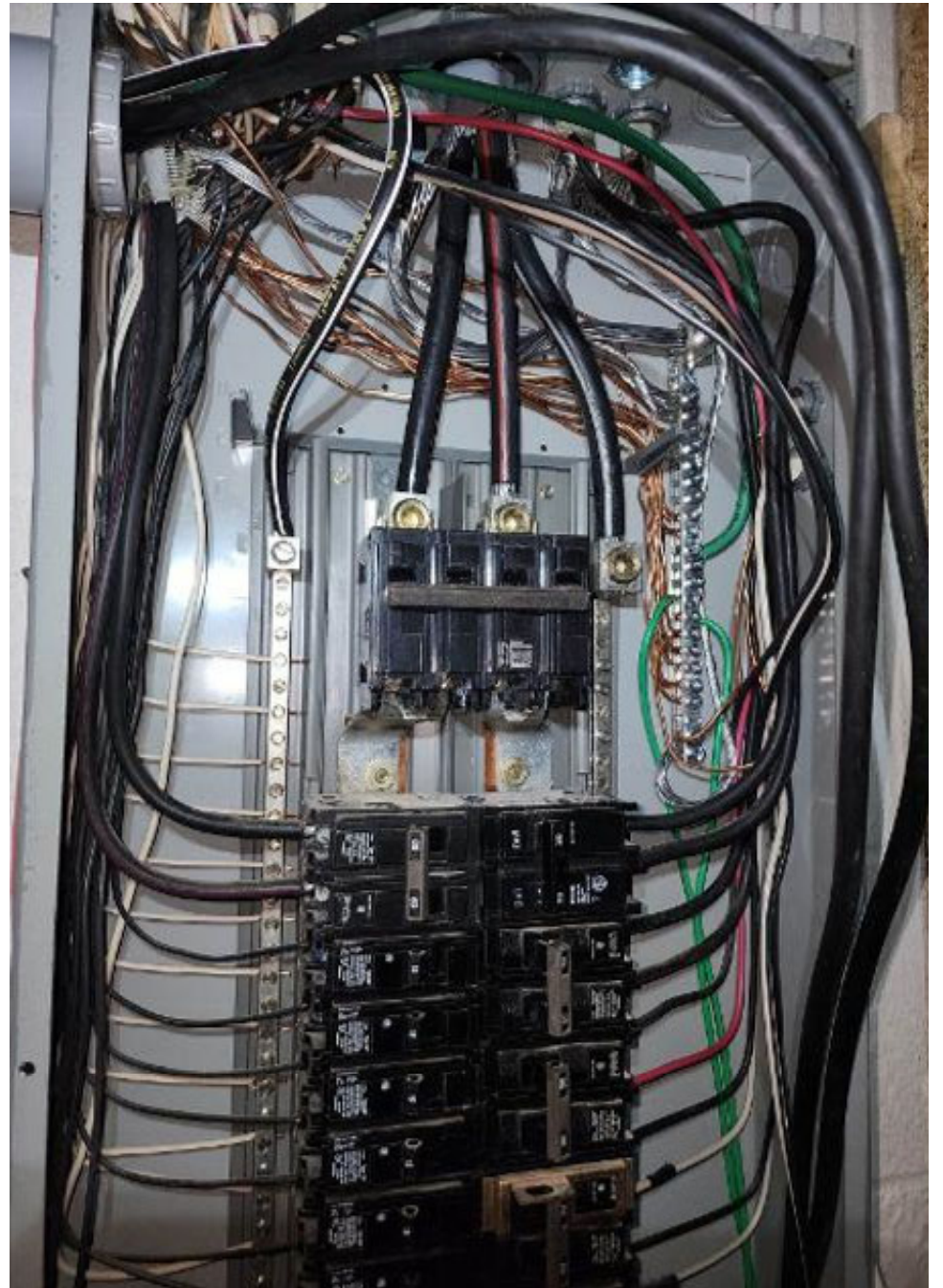


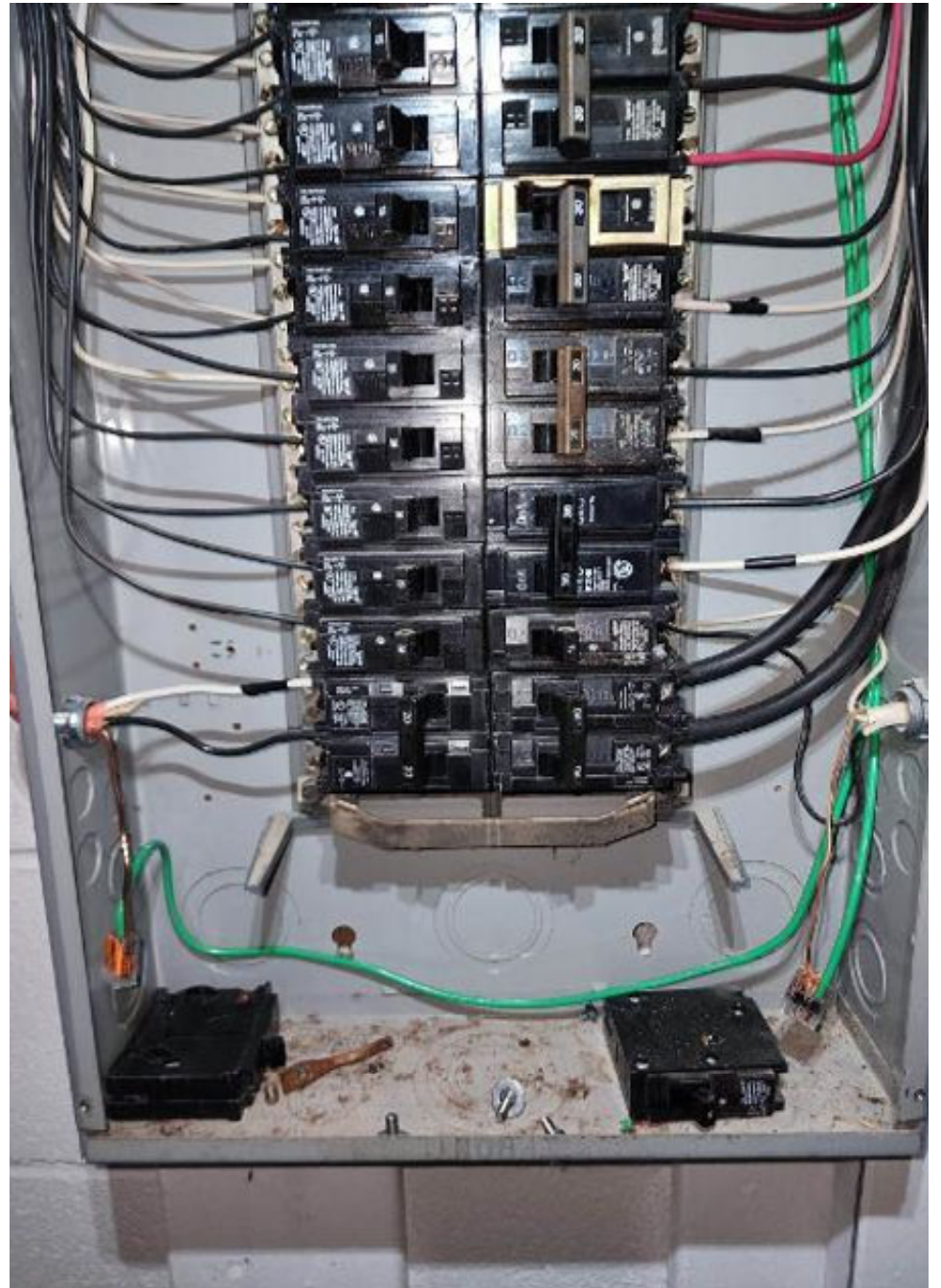
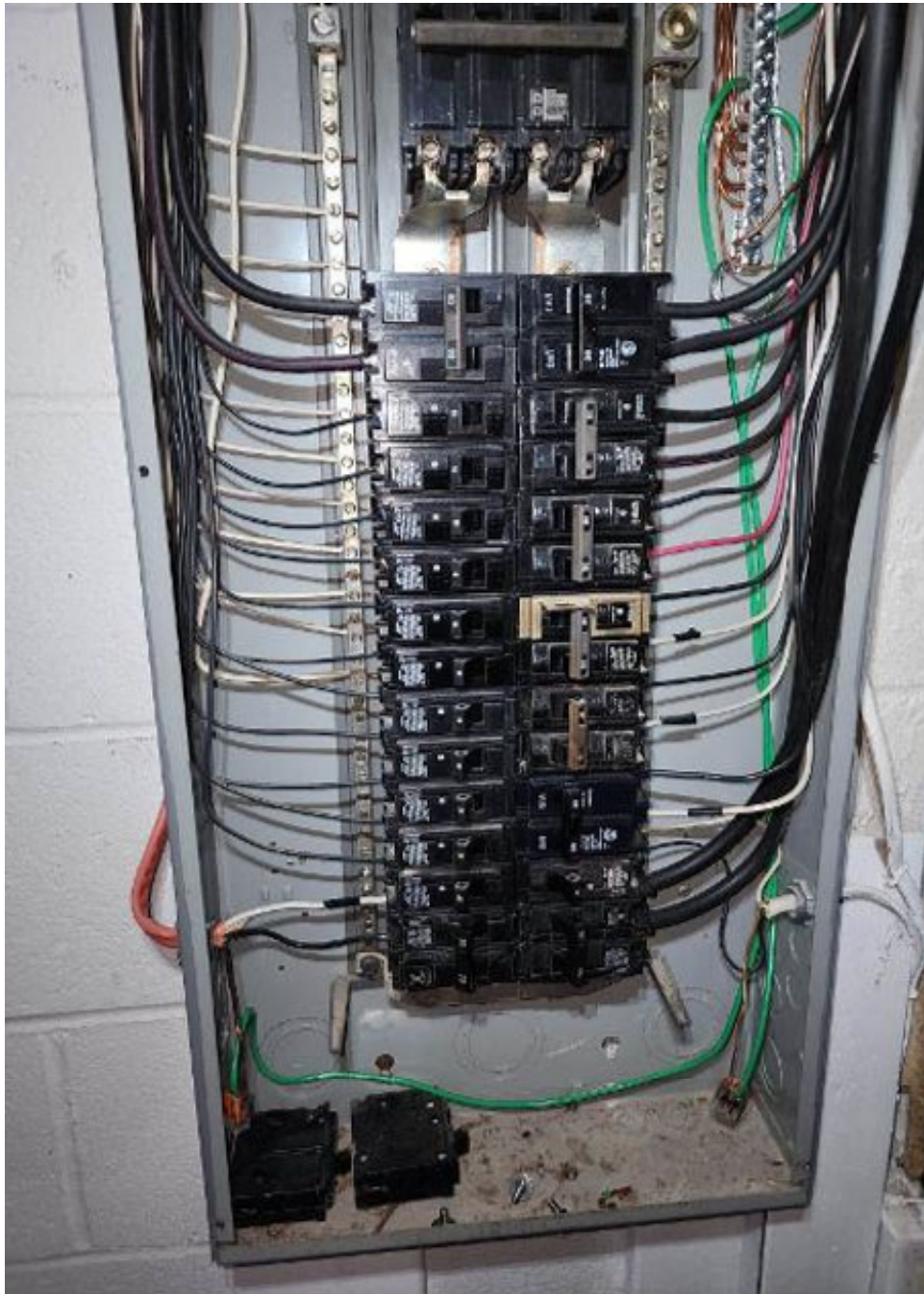


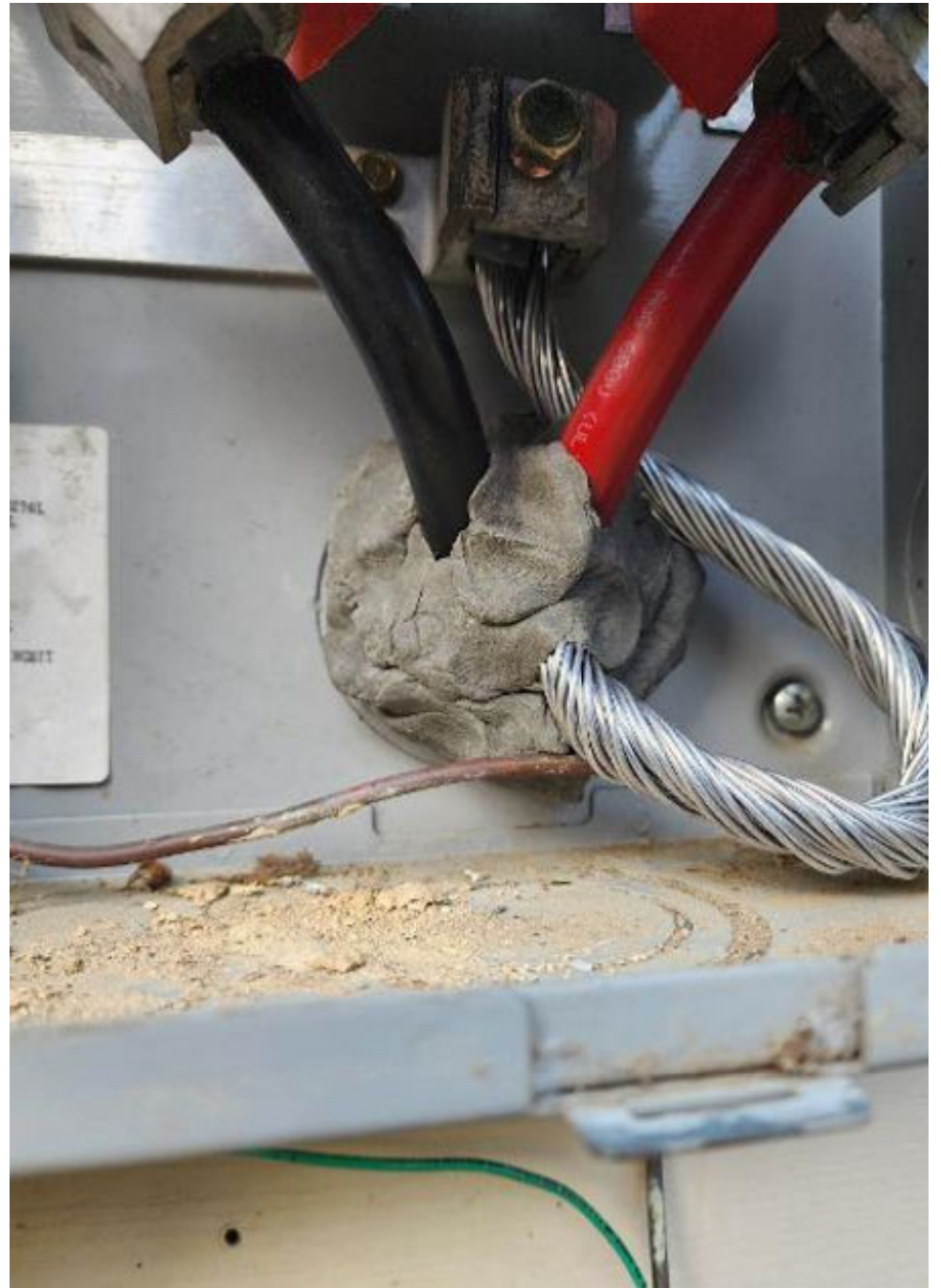


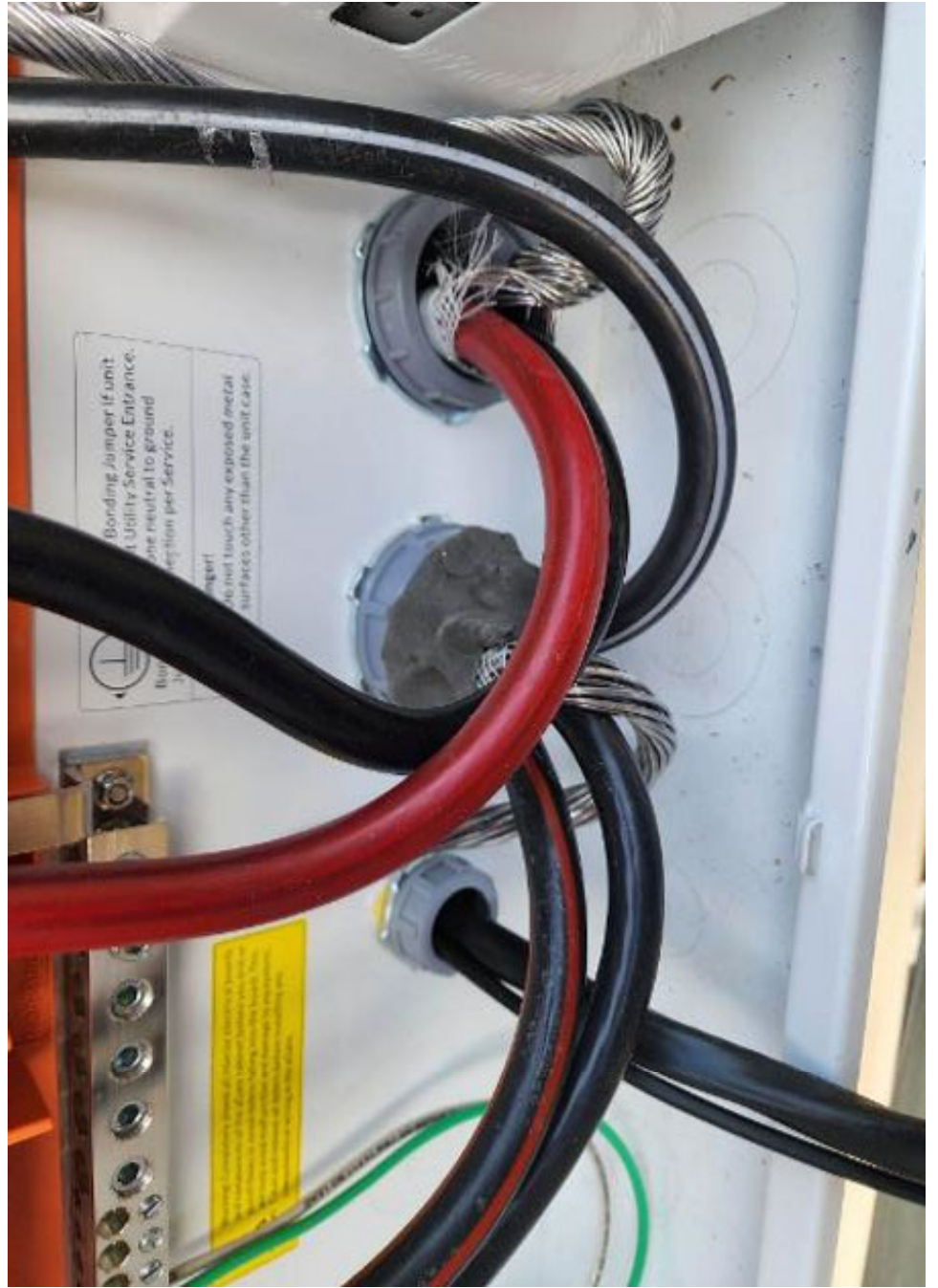


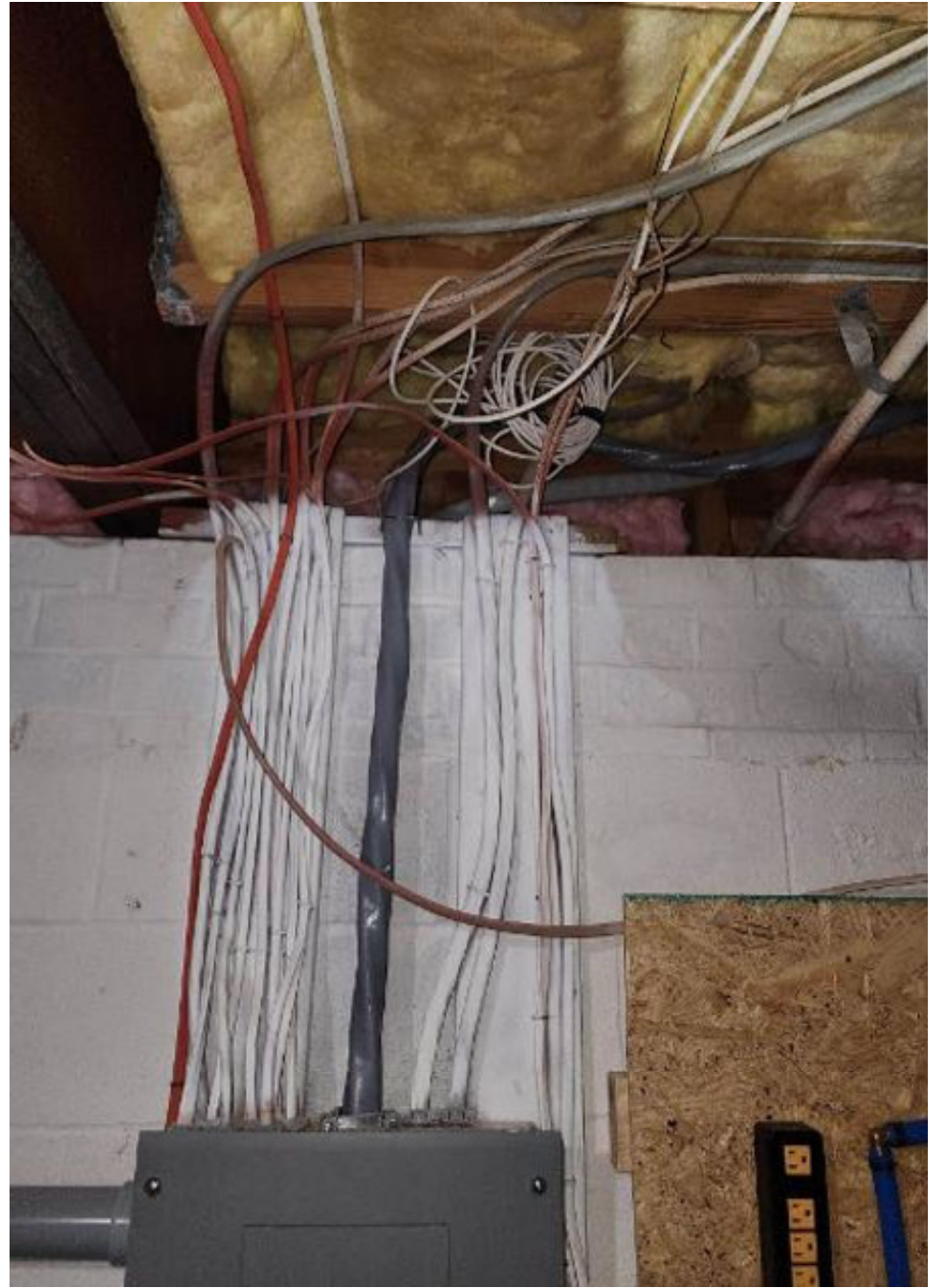


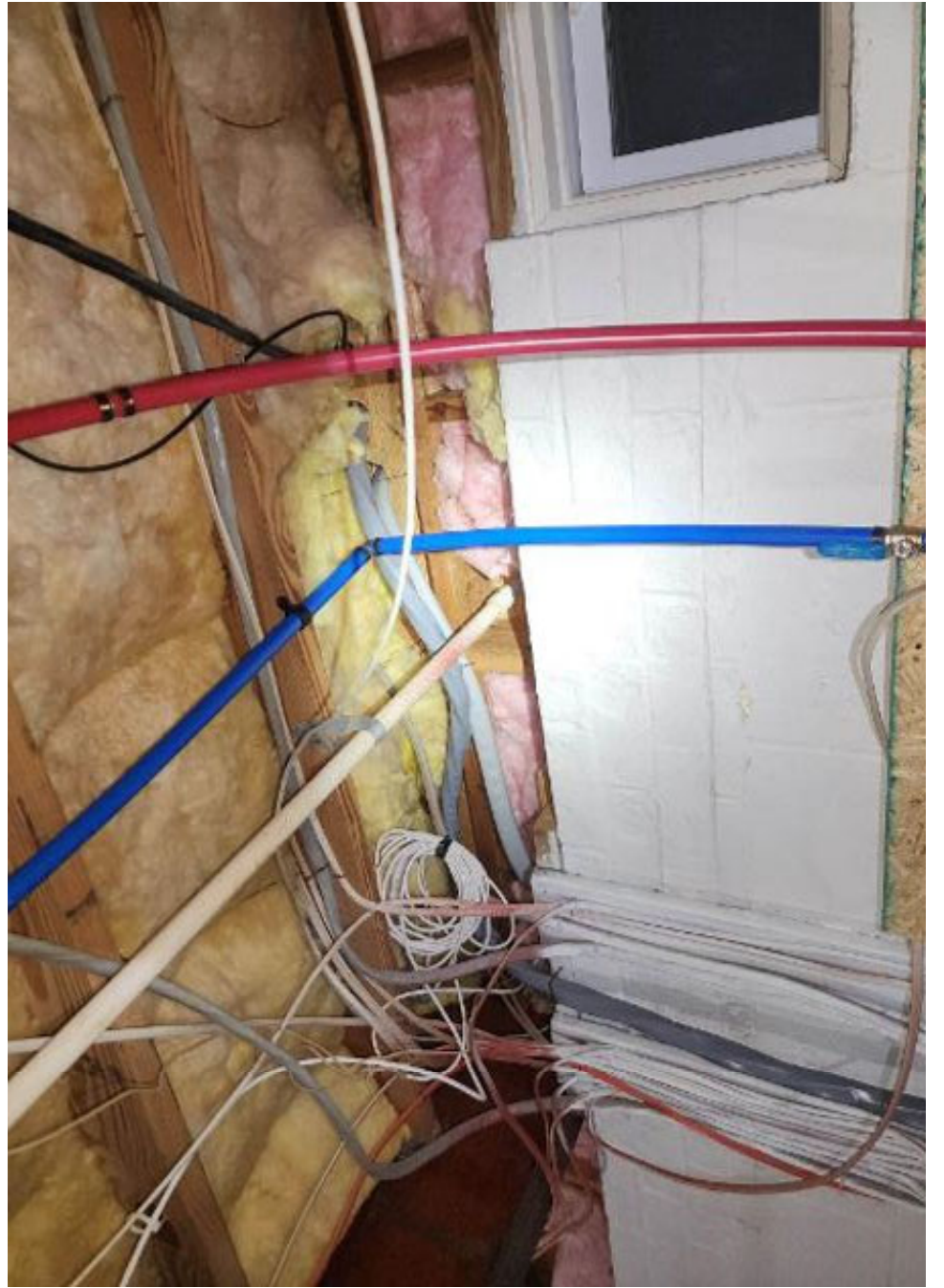








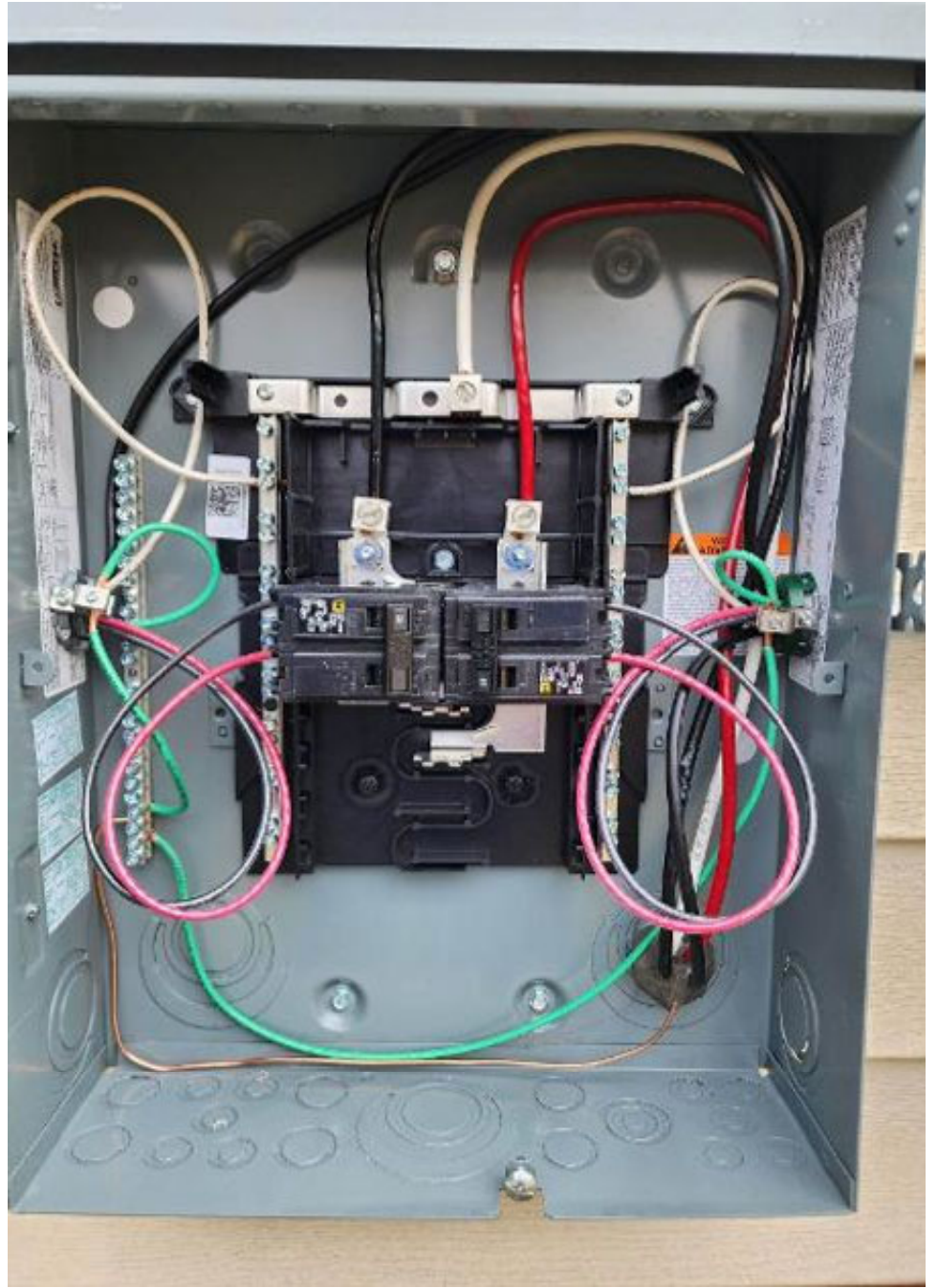


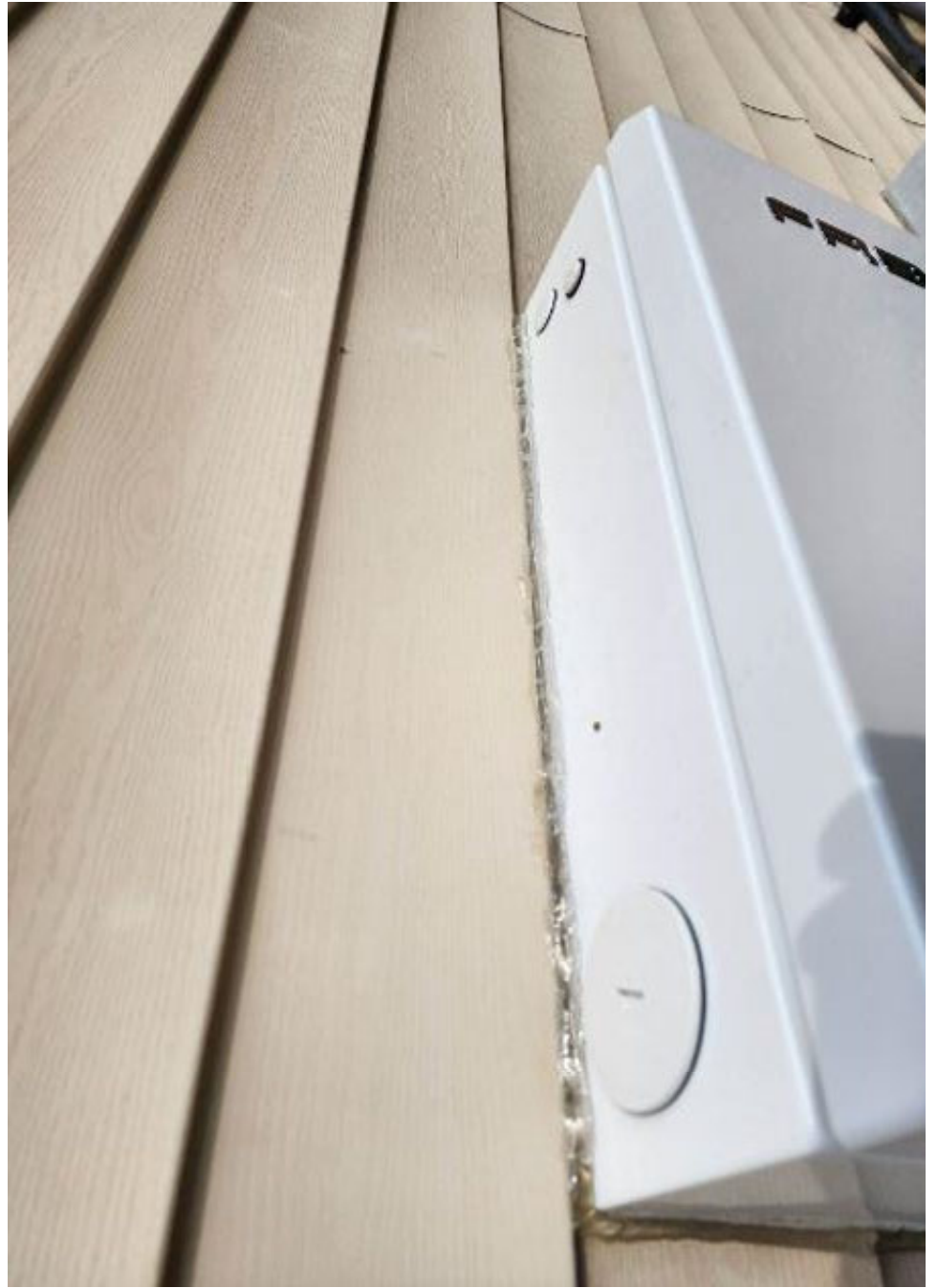
















## Production

Today: 0.00 Wh

Lifetime: 0.00 Wh

## Consumption

Today: 0.00 Wh

Lifetime: 0.00 Wh



Scan completed

IQ Microinverters : 15/15

Done

PLC SCAN

Powerline Communications Noise Detection

IQ Gateway successfully connected to Enphase  
Cloud and Installer Toolkit

## IQ Gateway Connectivity status



Wi-Fi

Connected



192.168.1.43



Ethernet



Cellular



Software up-to-date

Current software version 07.03.466

START PROVISIONING DEVICES



Diagnostic Tools





Connection success.



Wifi



Internet

Connected, Good signal.



Ethernet



Wifi

Normal signal



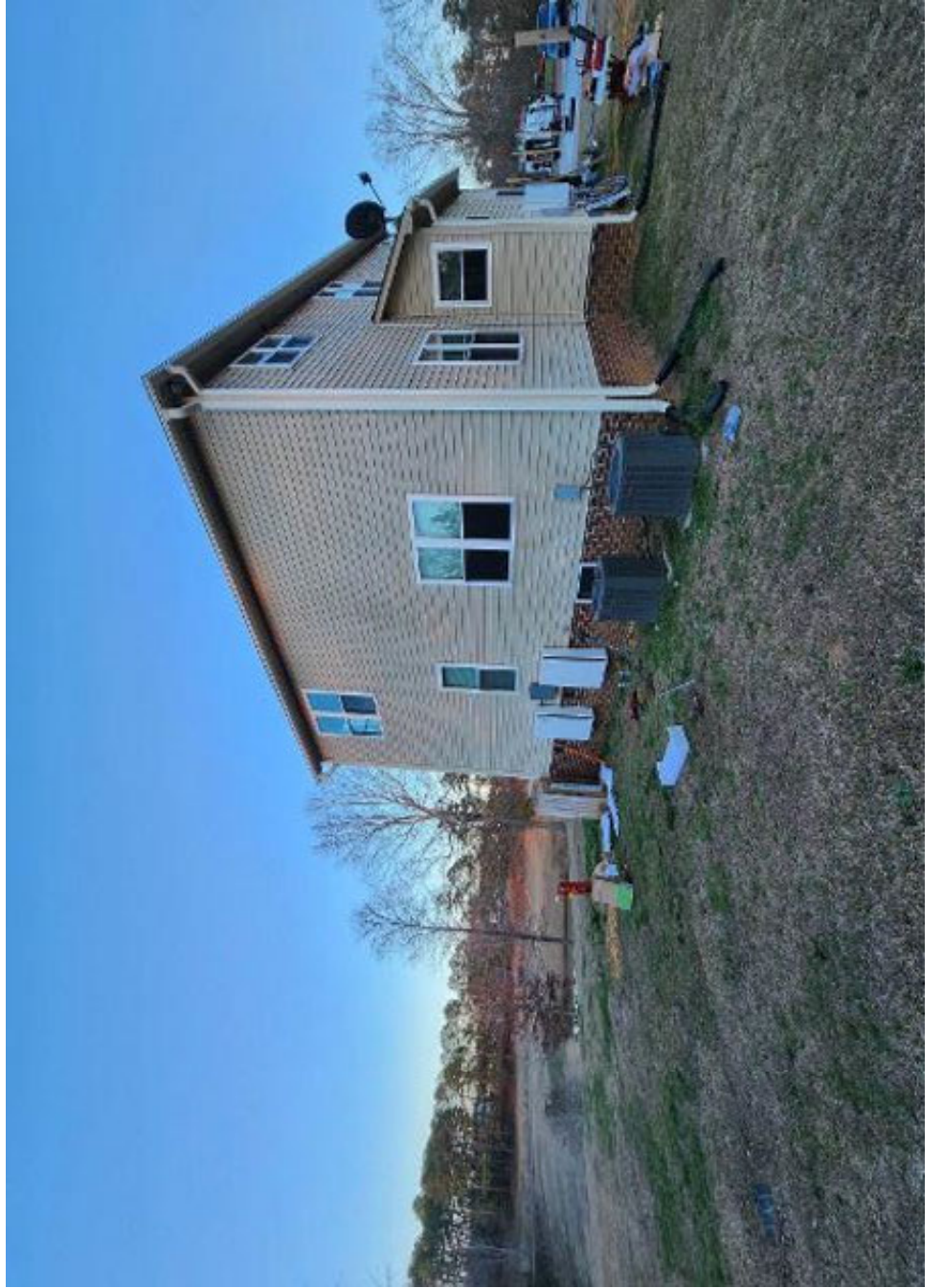
4G

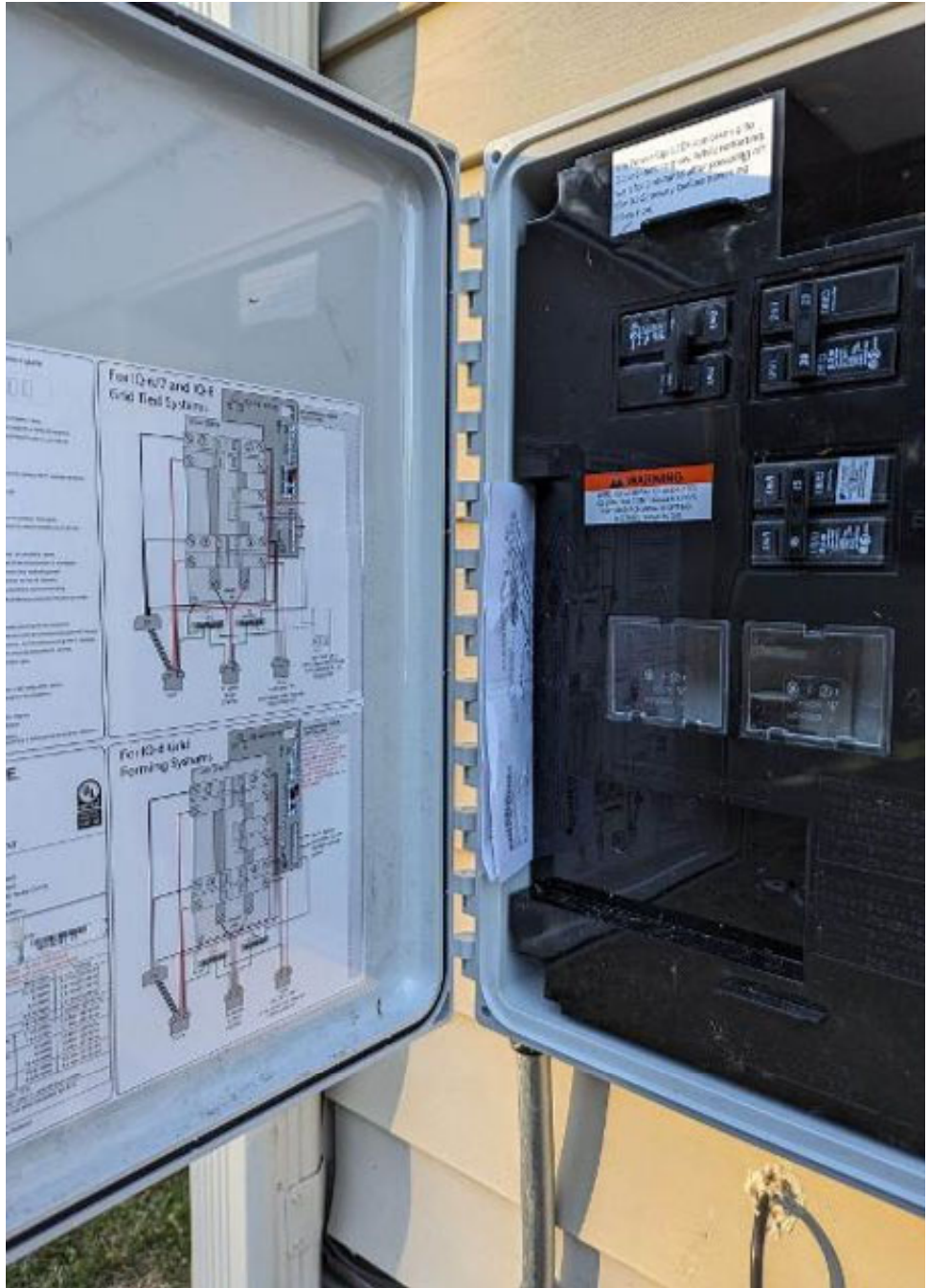
Normal signal

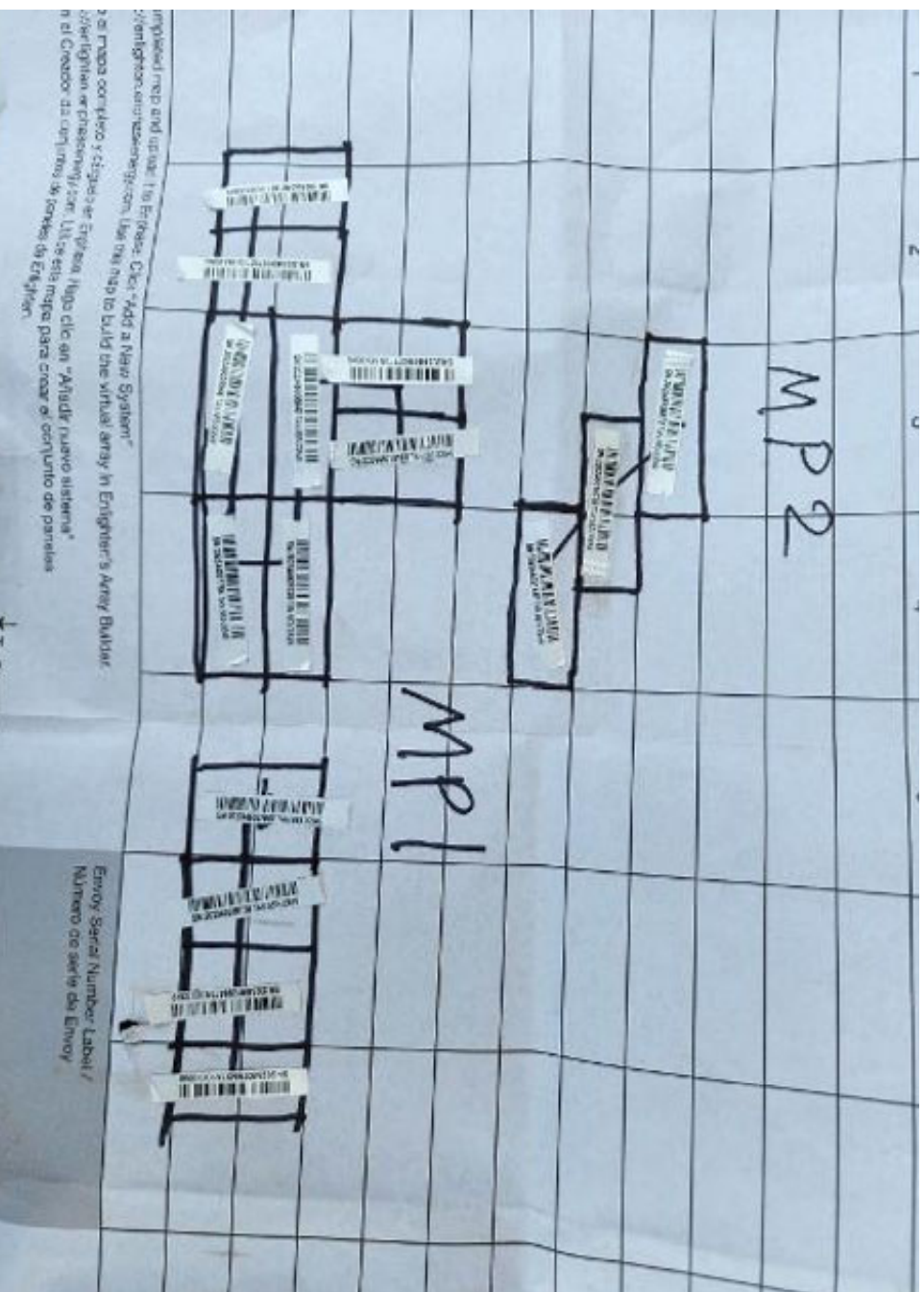
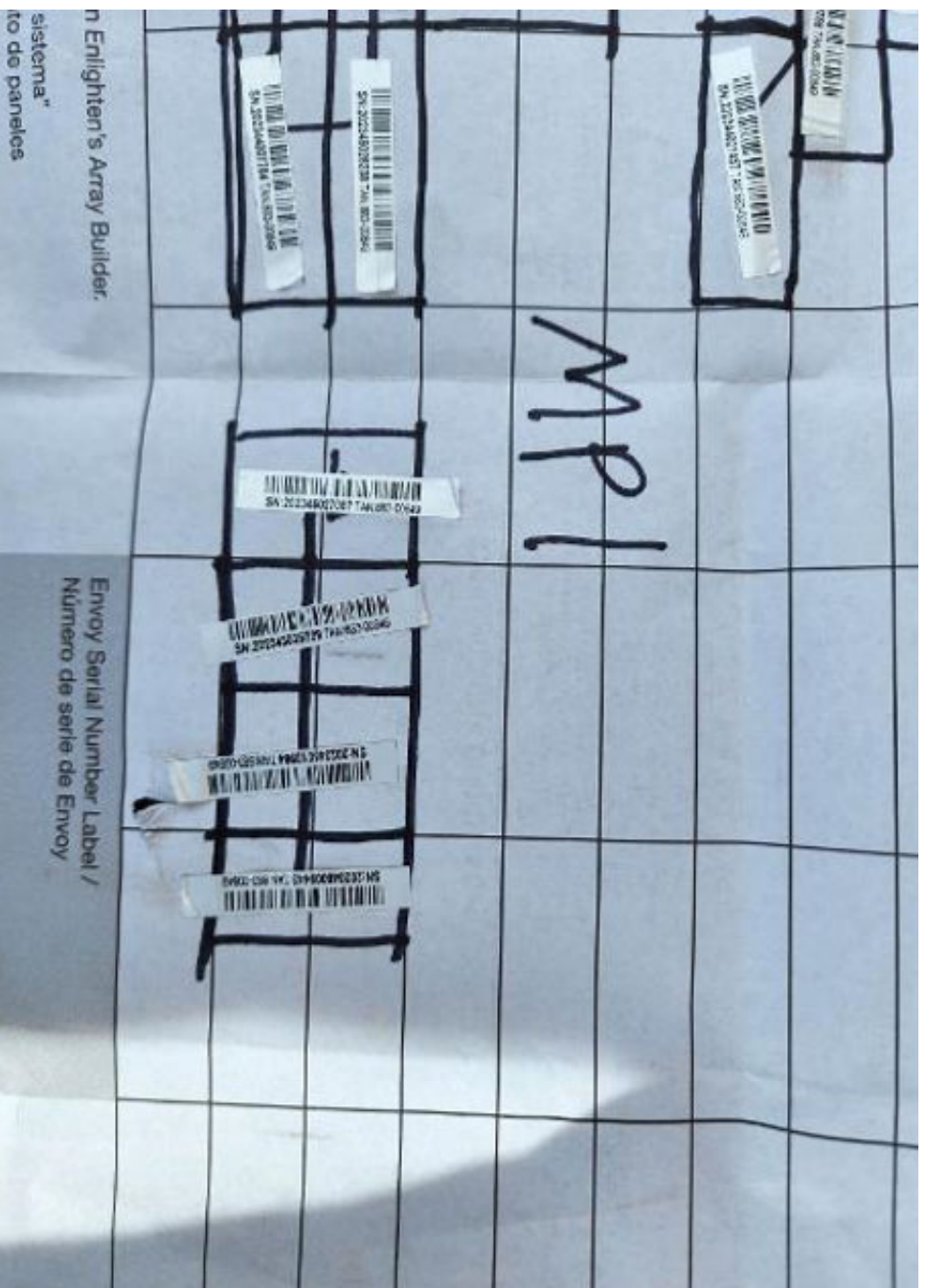


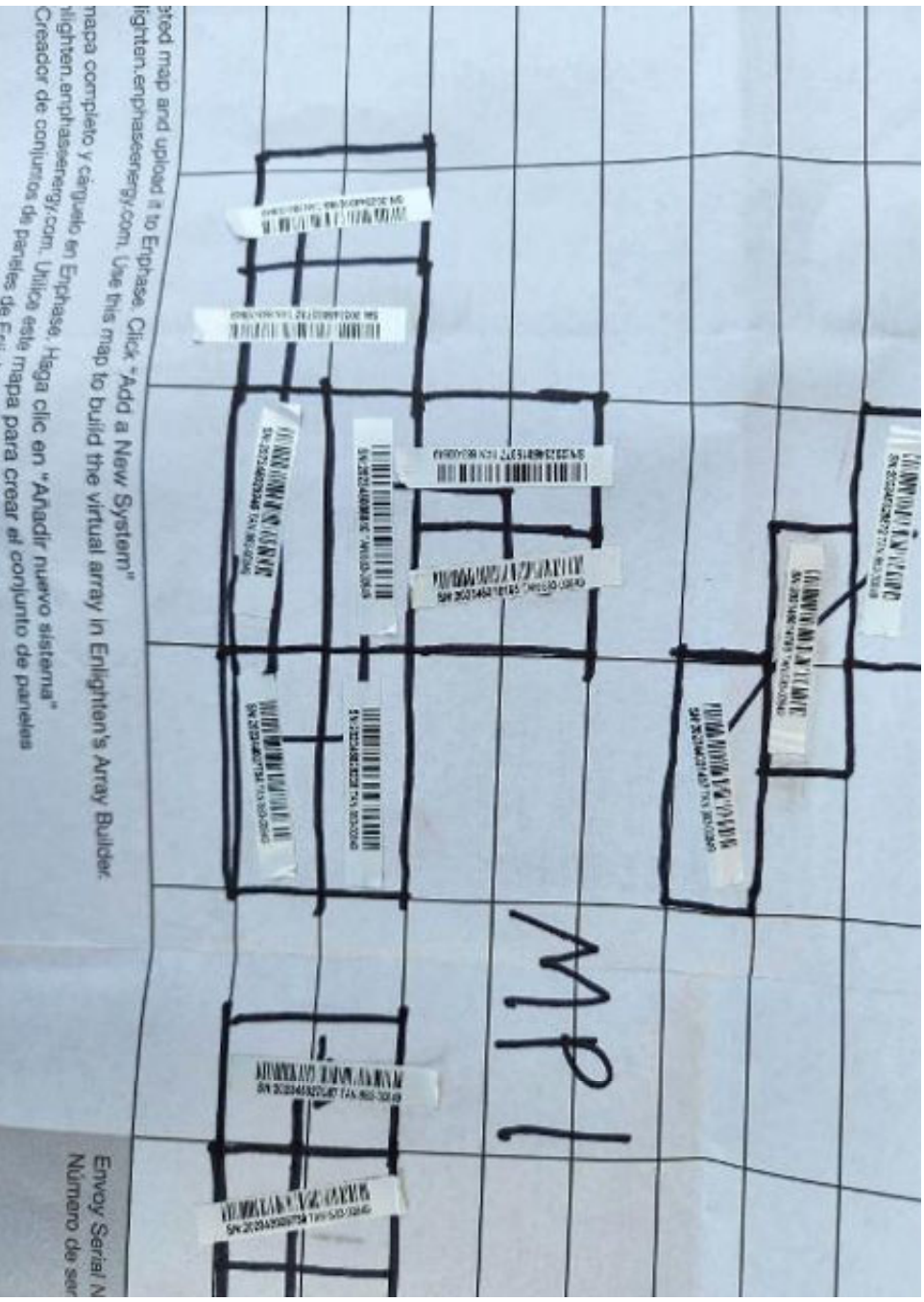












Combiner Box  
 X2-IQ-AM1-240-4  
 IEEE1547:2018 COMPLIANT

SWITCHGEAR  
 800V AC  
 E341166

Electrical ratings

Voltage 240VAC, 60Hz  
 DG Breakers 80A MAX (combined)  
 DG Inputs 64A MAX (combined)  
 Output 65A MAX, 90A MAX feeder OCPD  
 Temperature 46°C MAX ambient  
 For DG breaker, use only Eaton BR series.

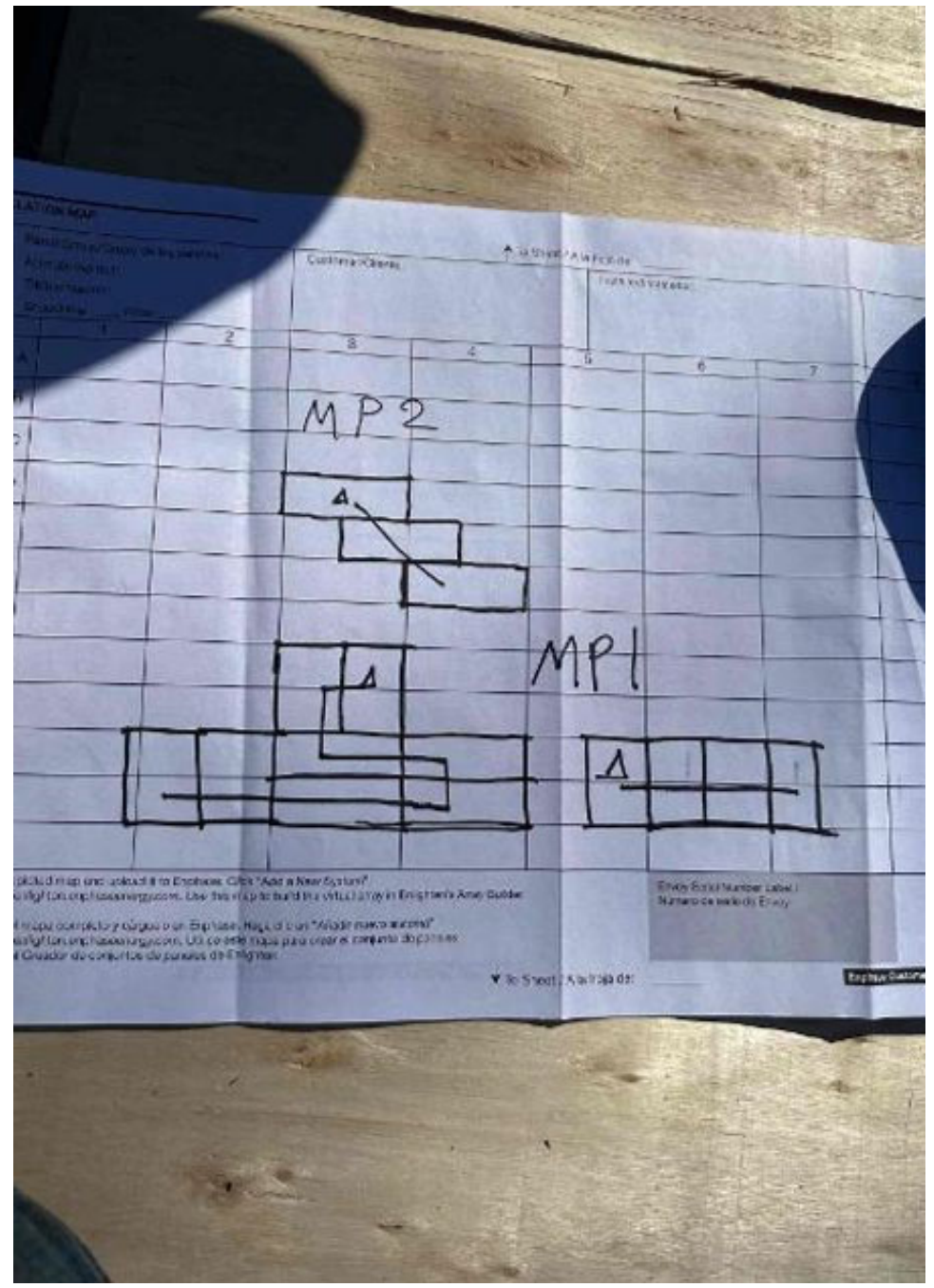
202341016451  
 S/N: 202341016451

P/N: 883-00353 17

Dedicated solar and DG Combiner Box - do not add loads  
 10 AMP or 15 AMP IQ Gateway Breaker not used for backfeed

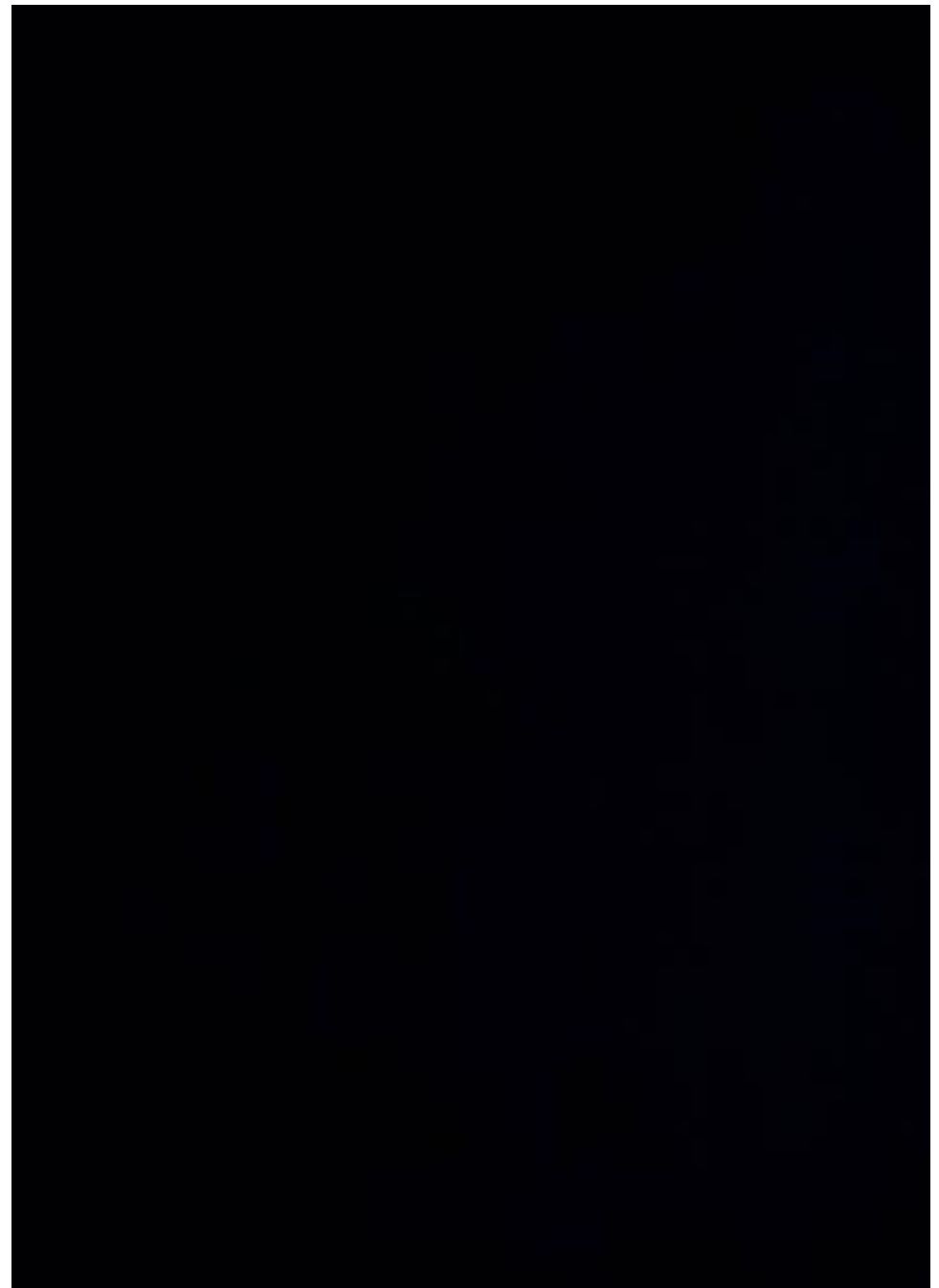
Connection	Wire sizes	Torque	
DG Breaker (1, 2, 3, 4)	14-10 AWG	2.2 Nm (20 lb-in)	
	8 AWG	2.8 Nm (25 lb-in)	
	6-4 AWG	3.0 Nm (27 lb-in)	
60A Circuit Breaker only	4-1/0 AWG	5.0 Nm (45 lb-in)	
IQ Gateway Breaker	14-10 AWG	2.26 Nm (20 lb-in)	
Neutral and ground	Large screw	2-1/0 AWG	5.6 Nm (45 lb-in)
		14-3 AWG	5.1 Nm (45 lb-in)
	Small screw	6 AWG	3.6 Nm (32 lb-in)
8 AWG		2.6 Nm (23 lb-in)	
10-14 AWG		2.3 Nm (20 lb-in)	
Main lug	10-4 AWG	5.0 Nm (45 lb-in)	
	3-2/0 AWG	5.6 Nm (50 lb-in)	

Copper conductors only, rated min. 75°C.  
 Follow NFPA 70 (NEC), or CSA C22.1 part 1, and all local codes.  
 For DG breakers larger than 20A, use wire insulated for 90°C based on 75°C ampacities.  
 Designed in California and New Zealand  
 Made in Mexico











**IQ Combiner 4**  
**Photovoltaic**  
**Combiner Box**  
**X2-IQ-AM1-240-4**  
**IEEE1547:2018 COMPLIANT**

**Electrical ratings**

Voltage 240VAC, 60Hz  
 DG Breakers 80A MAX (combined)  
 DG Inputs 64A MAX (combined)  
 Output 65A MAX, 90A MAX feeder OCPD  
 Temperature 46°C MAX ambient  
 For DG breaker, use only Eaton BR series.

Barcode: 202341016451

S/N: 202341016451

P/N: 883-00353 17

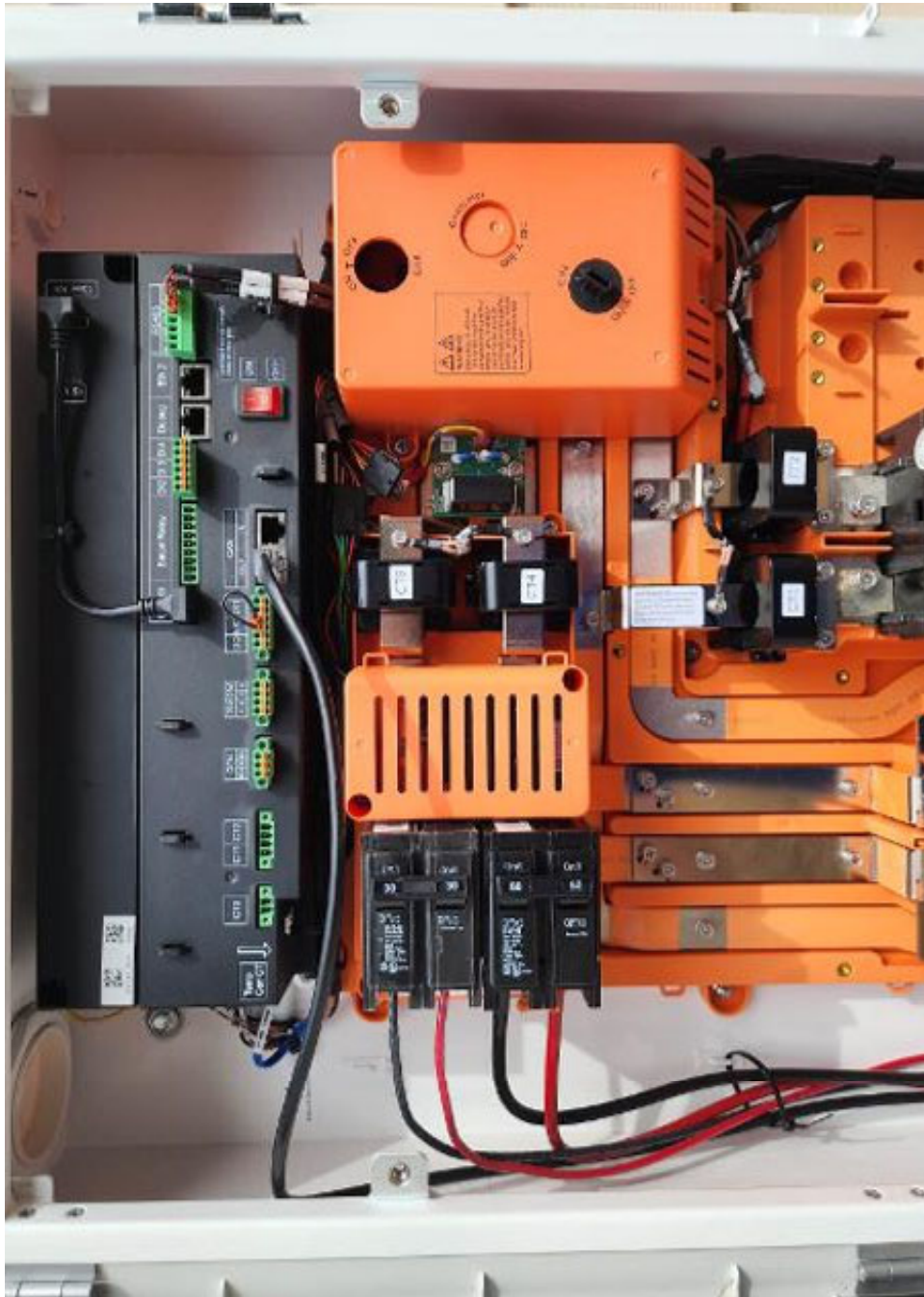
Dedicated solar and DG Combiner Box - do not add loads  
 10 AMP or 15 AMP IQ Gateway Breaker not used for backfeed

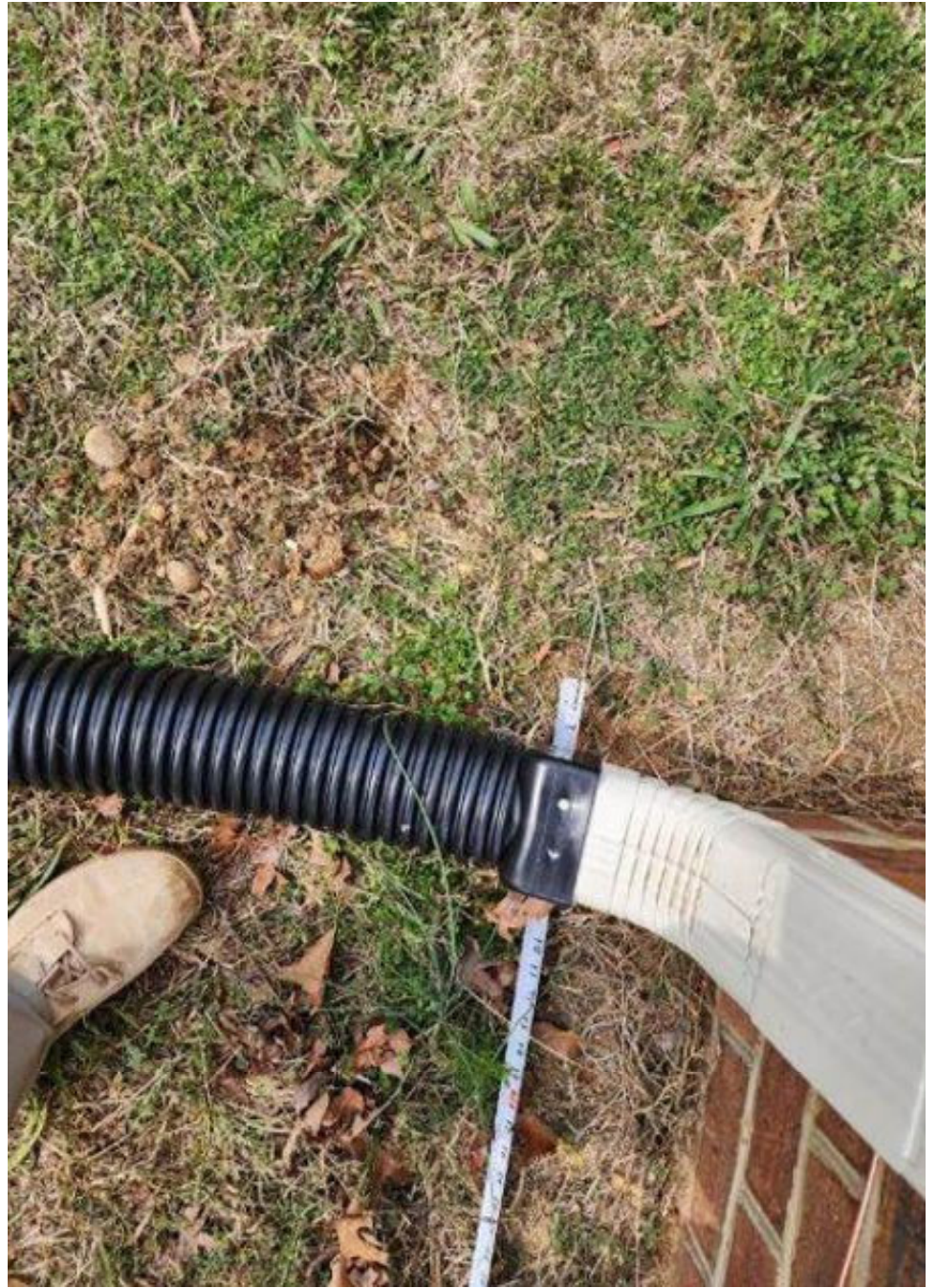
Connection	Wire sizes	Torque	
DG Breaker (1, 2, 3, 4)	14-10 AWG	2.2 Nm (20 lb-in)	
	8 AWG	2.8 Nm (25 lb-in)	
	6-4 AWG	3.0 Nm (27 lb-in)	
60A Circuit Breaker only	4-1/0 AWG	5.0 Nm (45 lb-in)	
IQ Gateway Breaker	14-10 AWG	2.26 Nm (20 lb-in)	
Neutral and ground	Large screw	2-1/0 AWG	5.6 Nm (45 lb-in)
		14-3 AWG	5.1 Nm (45 lb-in)
	Small screw	6 AWG	3.6 Nm (32 lb-in)
		8 AWG	2.6 Nm (23 lb-in)
Main lug	10-4 AWG	5.0 Nm (45 lb-in)	
	3-2/0 AWG	5.6 Nm (50 lb-in)	

Copper conductors only, rated min. 75°C.  
 Follow NFPA 70 (NEC), or CSA C22.1 part 1, and all local codes.  
 For DG Breakers larger than 20A, use wire insulated for 90°C based on 75°C ampacities.  
 Designed in California and New Zealand  
 Made in Mexico









Designated Competent Person - Fill out this portion of the form

"In Case of Emergency, call 911 immediately and proceed to the nearest emergency room"  
 For non-emergency injuries, please report the injury to your manager, follow the Injury Standard Operating Procedures - Notify manager.

Nearest Urgent Care (circle one) **95mi - WakeMed Urgent Care**

Nearest Emergency Room: **Rex Holly Springs Hospital 850 S Main St, Ryder Heights 305-535-9587**

Safety Contact: \_\_\_\_\_

Additional Notes: \_\_\_\_\_

Report Injury



Workers  
 Compensation Provider: Berkshire Hathaway Homestate Companies  
 Berkshire Hathaway Address: PO Box 881716, San Francisco CA 94138  
 Berkshire Hathaway Fax Number: (800) 661-6964  
 Berkshire Hathaway Policy Number: BWWC236029 (OK, NJ) - BWWC225818 (all other states)  
 Blue Raven Fax Number: (855)-698-108

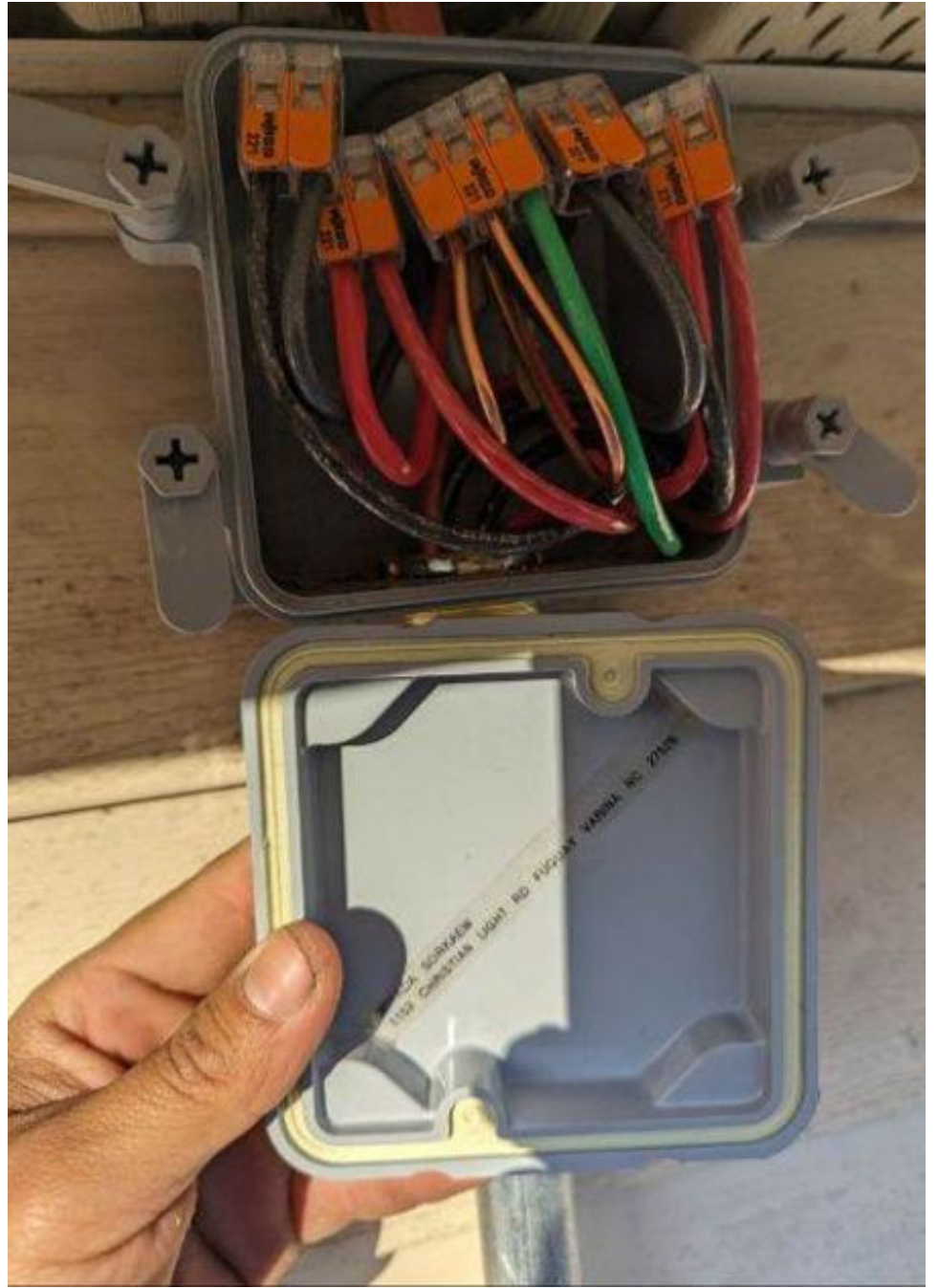
Customer Name: **Wingda Sorbaev** Job Hazard Analysis  
 Address: **1153 Christian Light Rd**  
 Installation Date: **2/20-2/22** Designated Competent Person: **Henry Mull** **BLUE RAVEN**

Version: 0.2

Activity	Hazards	Steps to Mitigate	Confirm
Trimming Ladders	Fall hazards	<input checked="" type="checkbox"/> Ladder standing/shutter is stabilized <input checked="" type="checkbox"/> Secured with "corder" strap <input checked="" type="checkbox"/> Ladder top is at a 75 degree	<b>2/20 PM</b>
parking over it	fall from roof fish from above	<input checked="" type="checkbox"/> Access/Obst/Anchor/CHLS inspected <input checked="" type="checkbox"/> Anchor points installed correctly 2026. Size of one " "	<b>2/20 PM</b>
Walk on high 185' 997' to entrance DD-1) 7602	Heat stress/hot conditions/hot above Sunburn	<input checked="" type="checkbox"/> Hydration - body system/ fluids when necessary Hydration (water available) <input type="checkbox"/> Electrolytes	<b>2/20 PM</b>
working within the RAZ	Sticks by hazard (falling object)	<input checked="" type="checkbox"/> Everyone within RAZ wearing hardhat <input checked="" type="checkbox"/> All four sides of RAZ enclosed	<b>2/20 PM</b>
vertical work	Electrical shock/Electrocution Arc Flash	<input checked="" type="checkbox"/> Arc flash PPE: CATT jacket, pants, safety glasses, face shield, boots, apron, coveralls insulated gloves within 10' of exposed live components. CATT PPE each given within 5' of vertical panel	<b>2/20 PM</b>
high pressure hazards	Stuck by flying objects (nuts) Car hazards Ergonomic hazards (various)	<input checked="" type="checkbox"/> Safety glasses worn at all times <input checked="" type="checkbox"/> Car & gloves worn at all times <input checked="" type="checkbox"/> Proper lifting techniques/ team lifting Steps to mitigate (see 15)	<b>2/20 PM</b>
Hot Tables	Other hazards		<b>2/20 PM</b>

Team Members	Name	Signature	Date
Crew Lead	<b>Henry Mull</b>	<i>Henry Mull</i>	



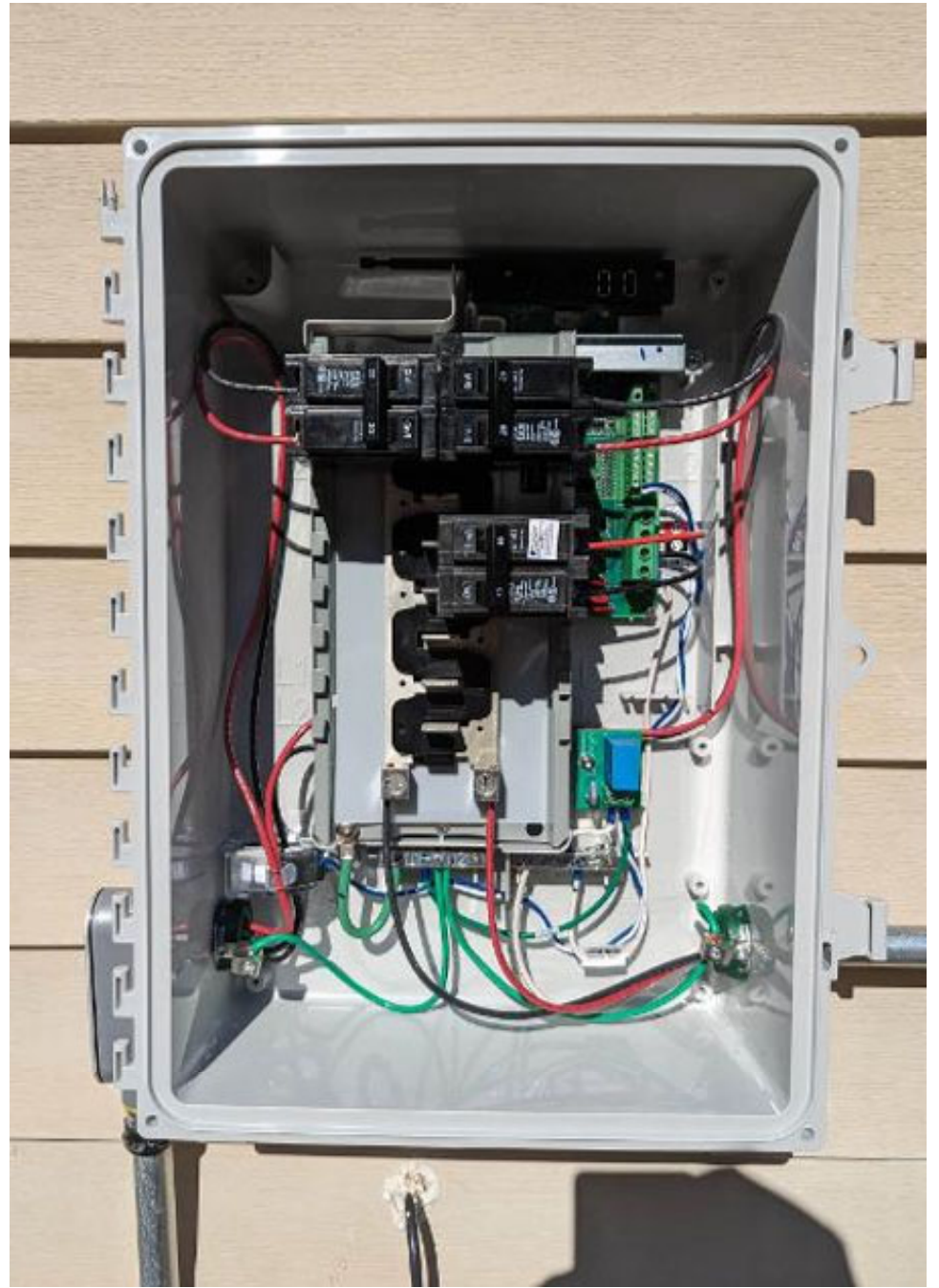


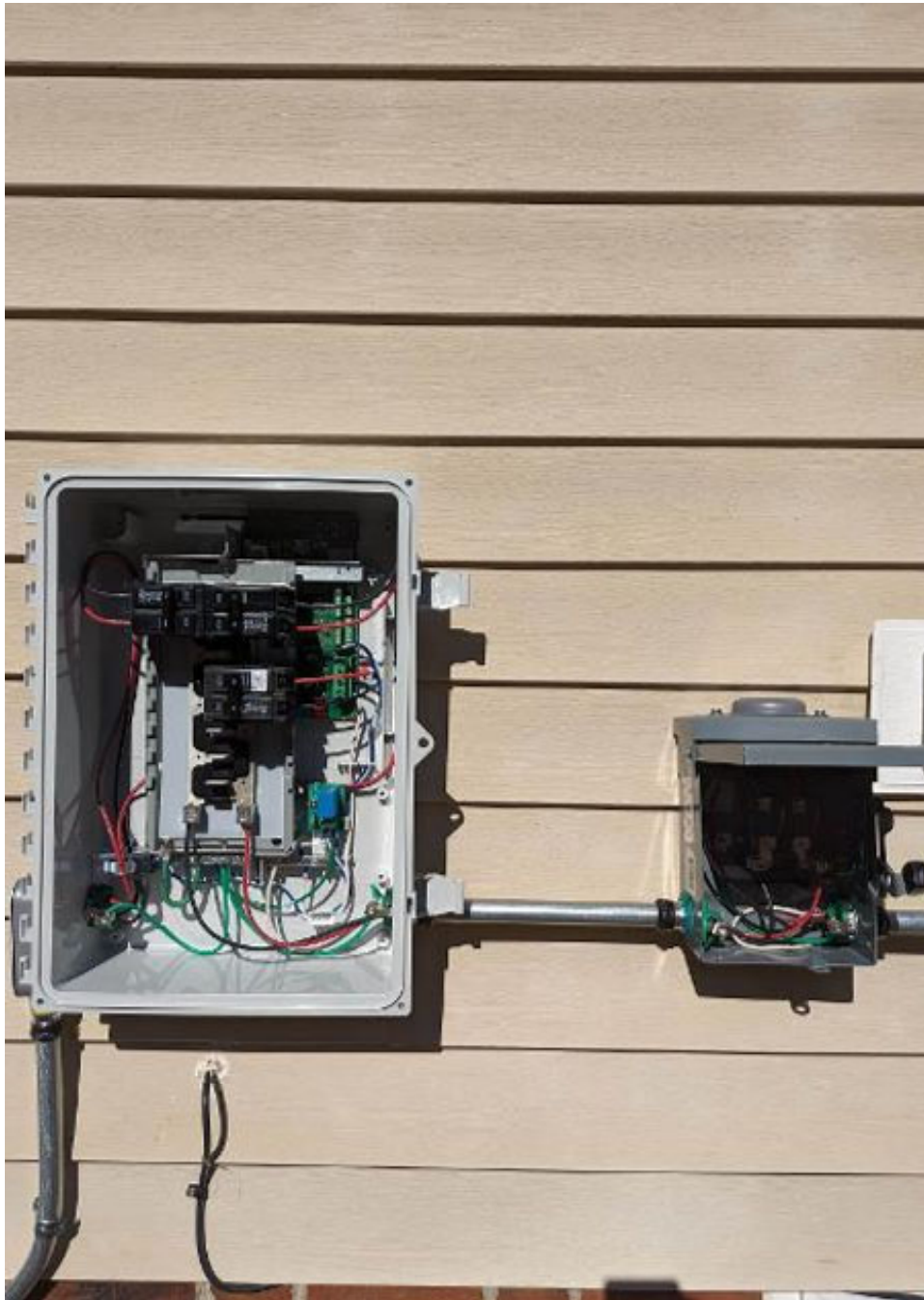




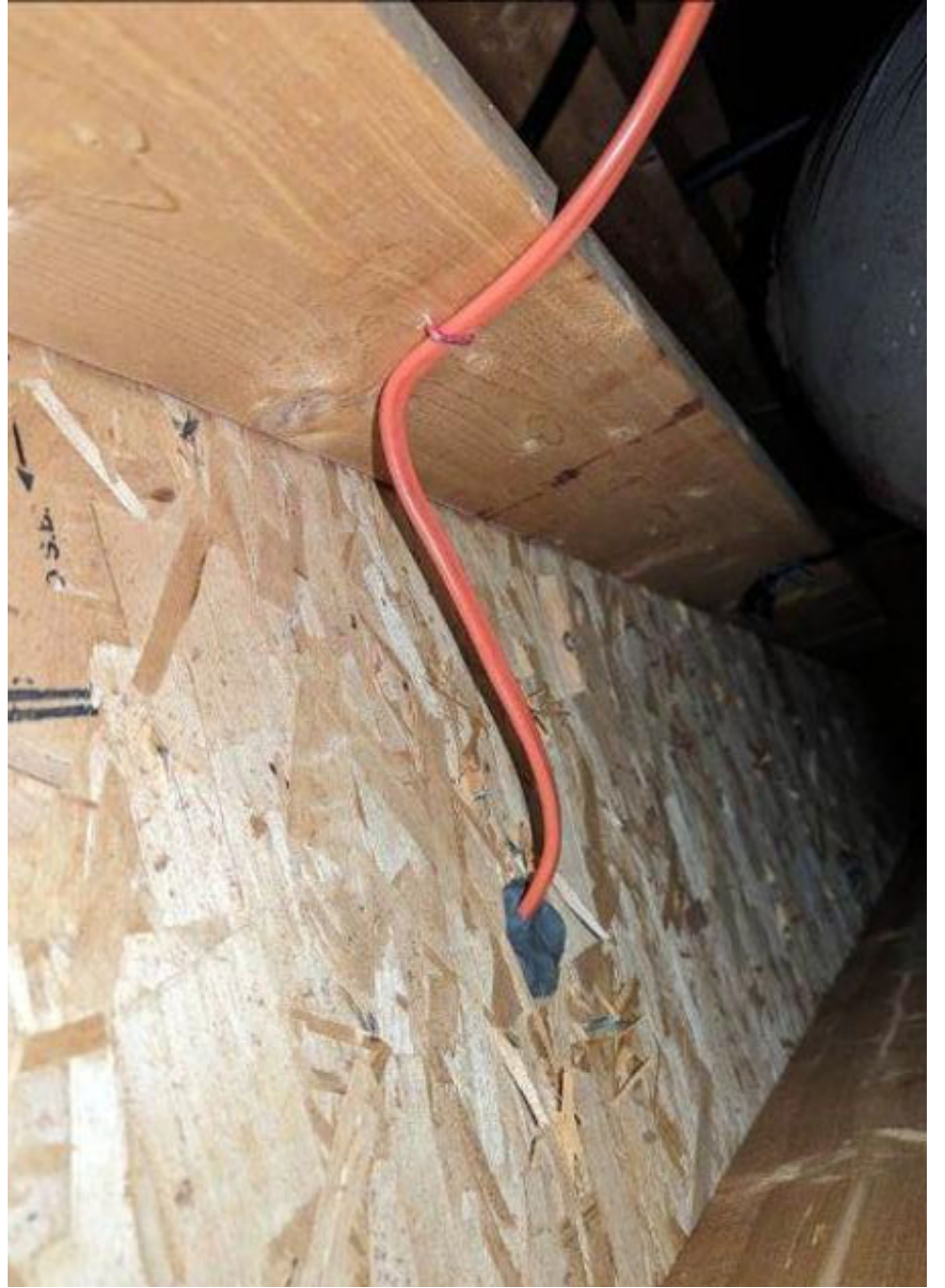


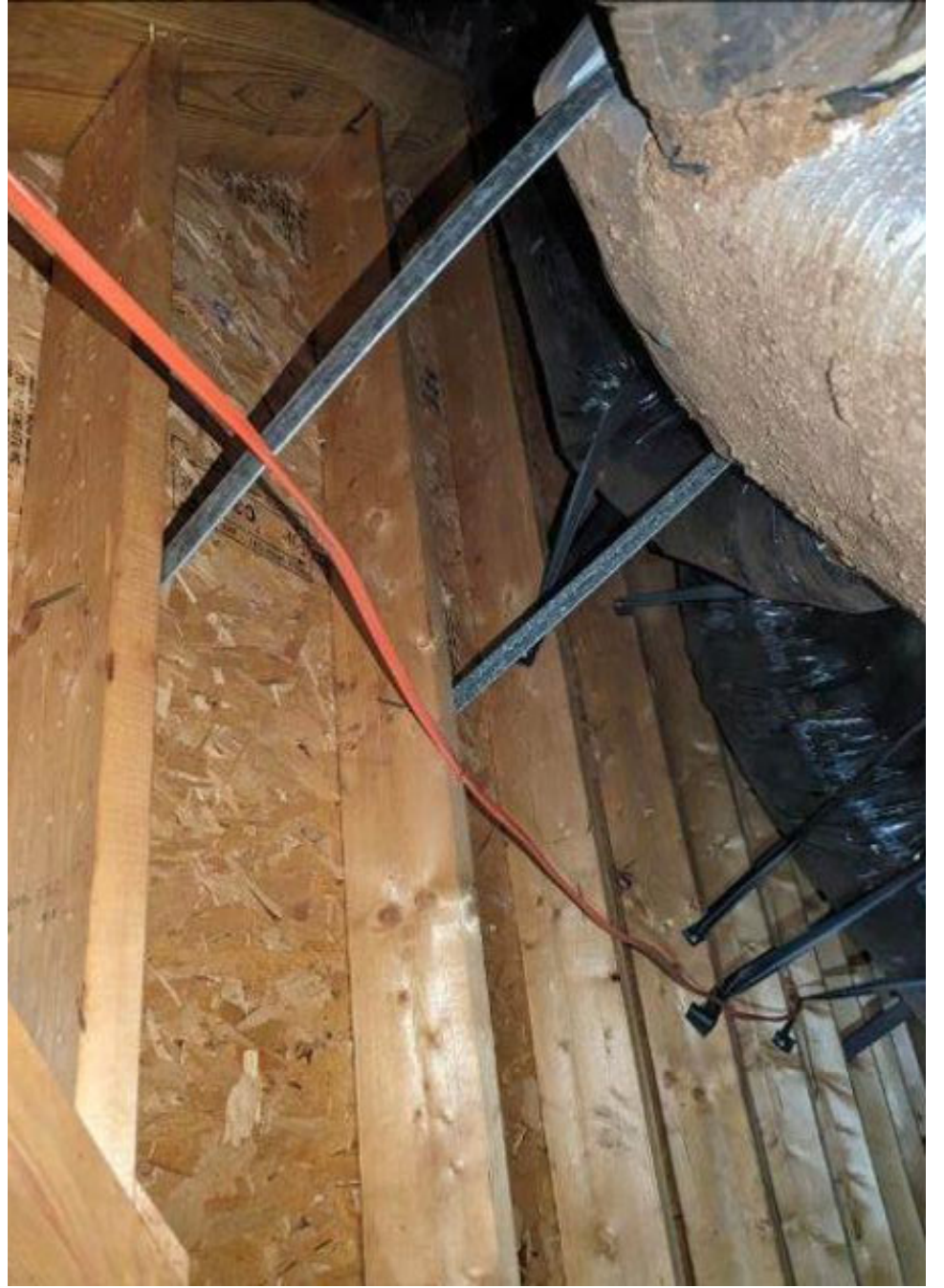


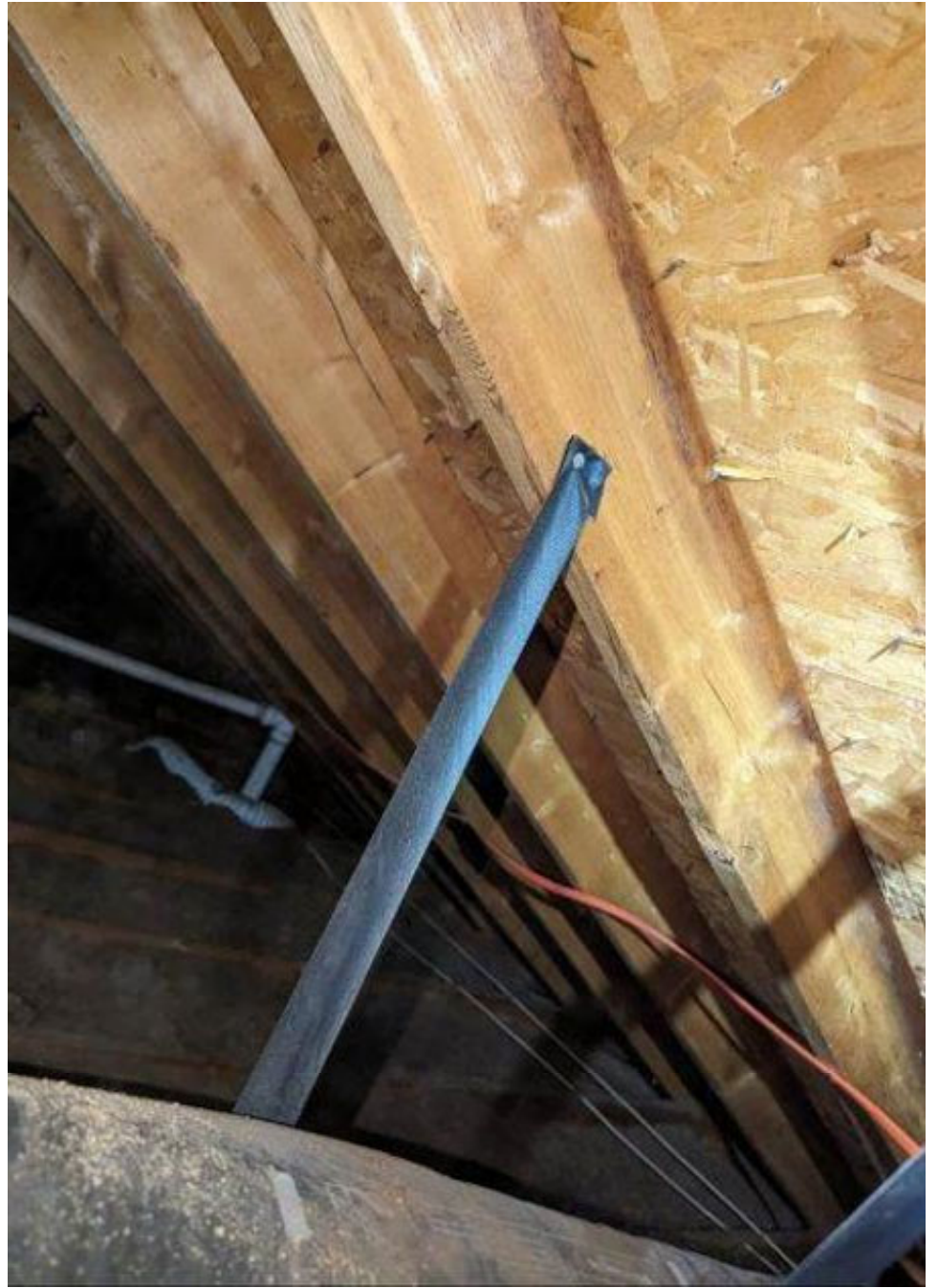








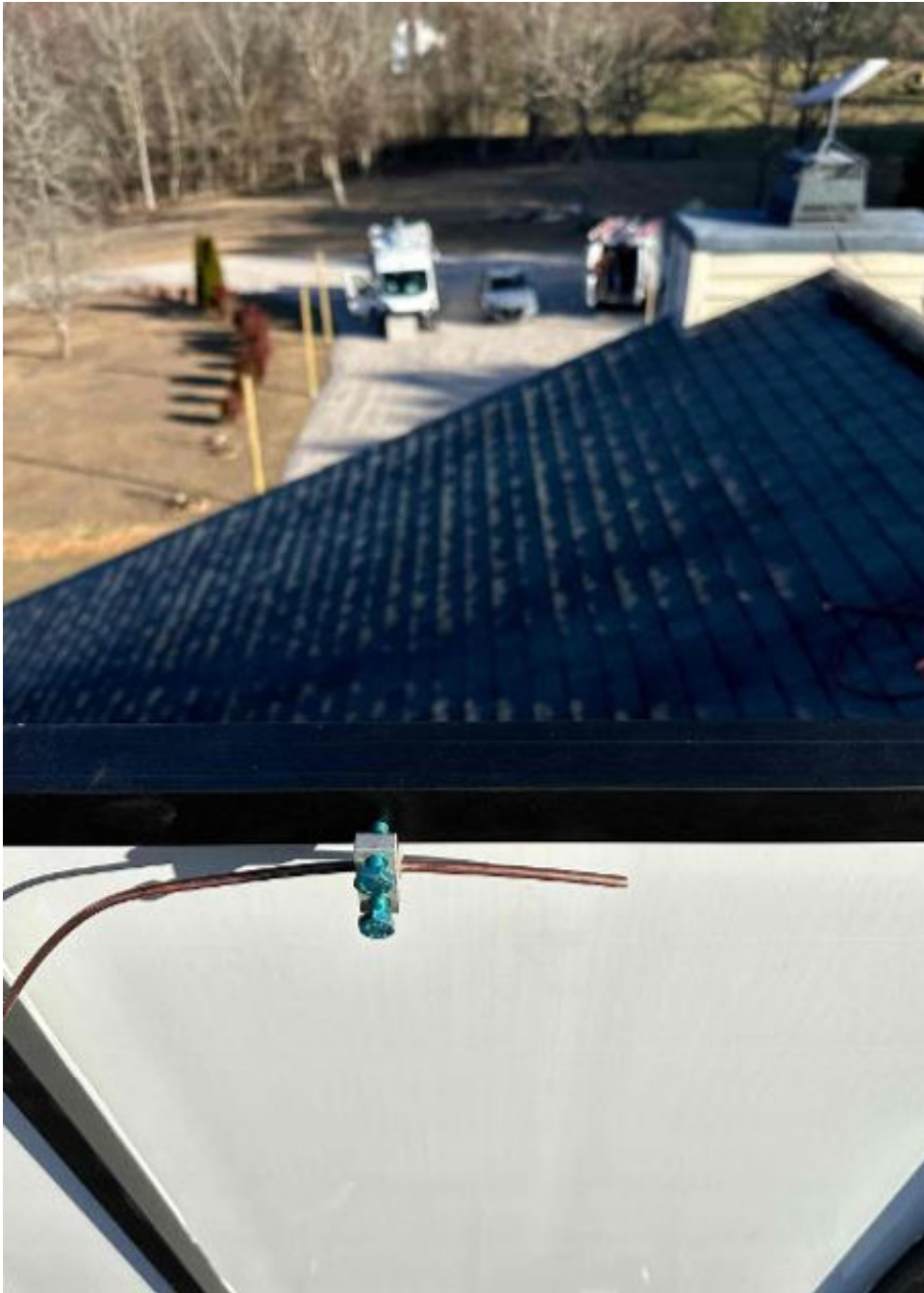






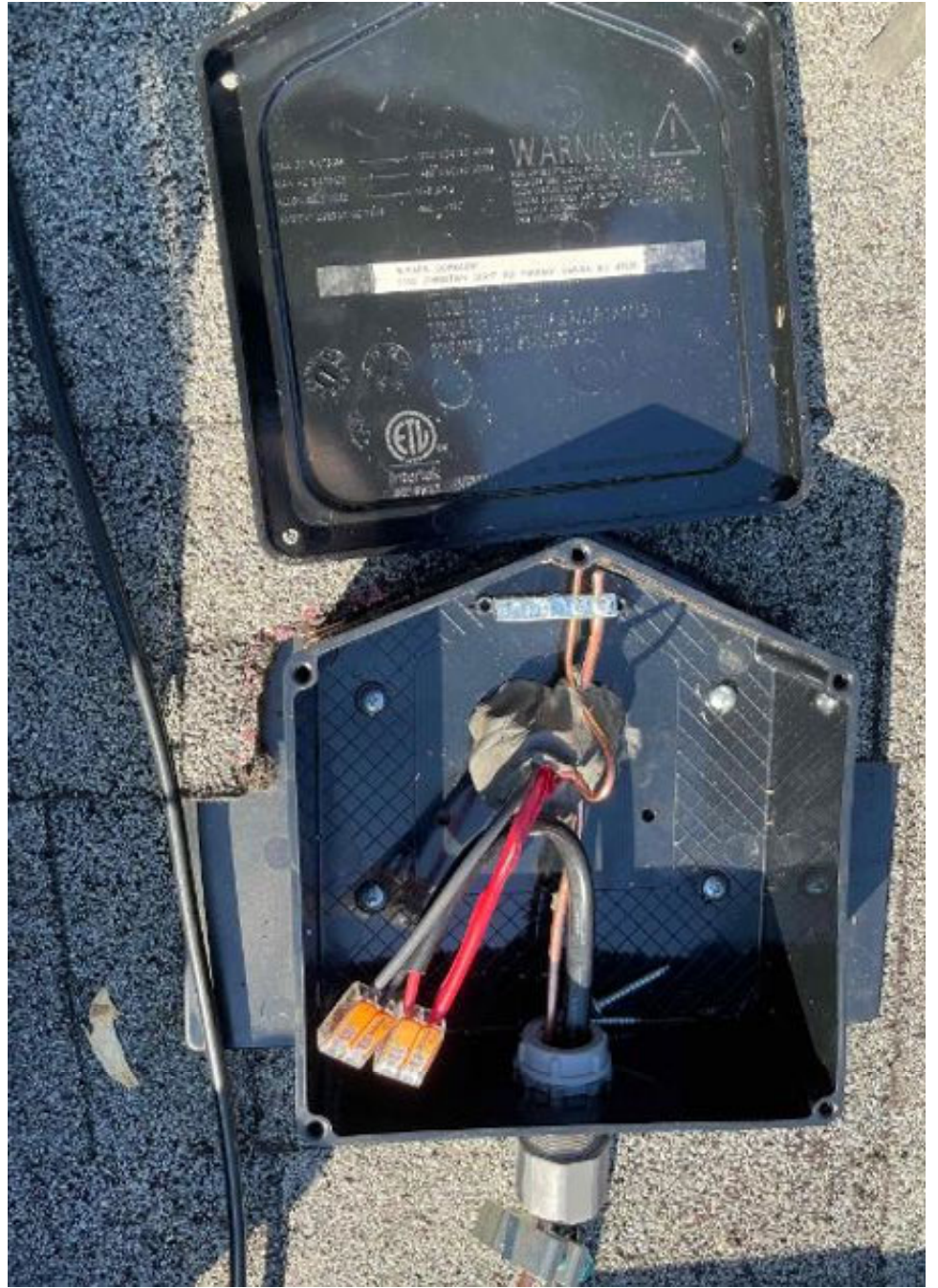








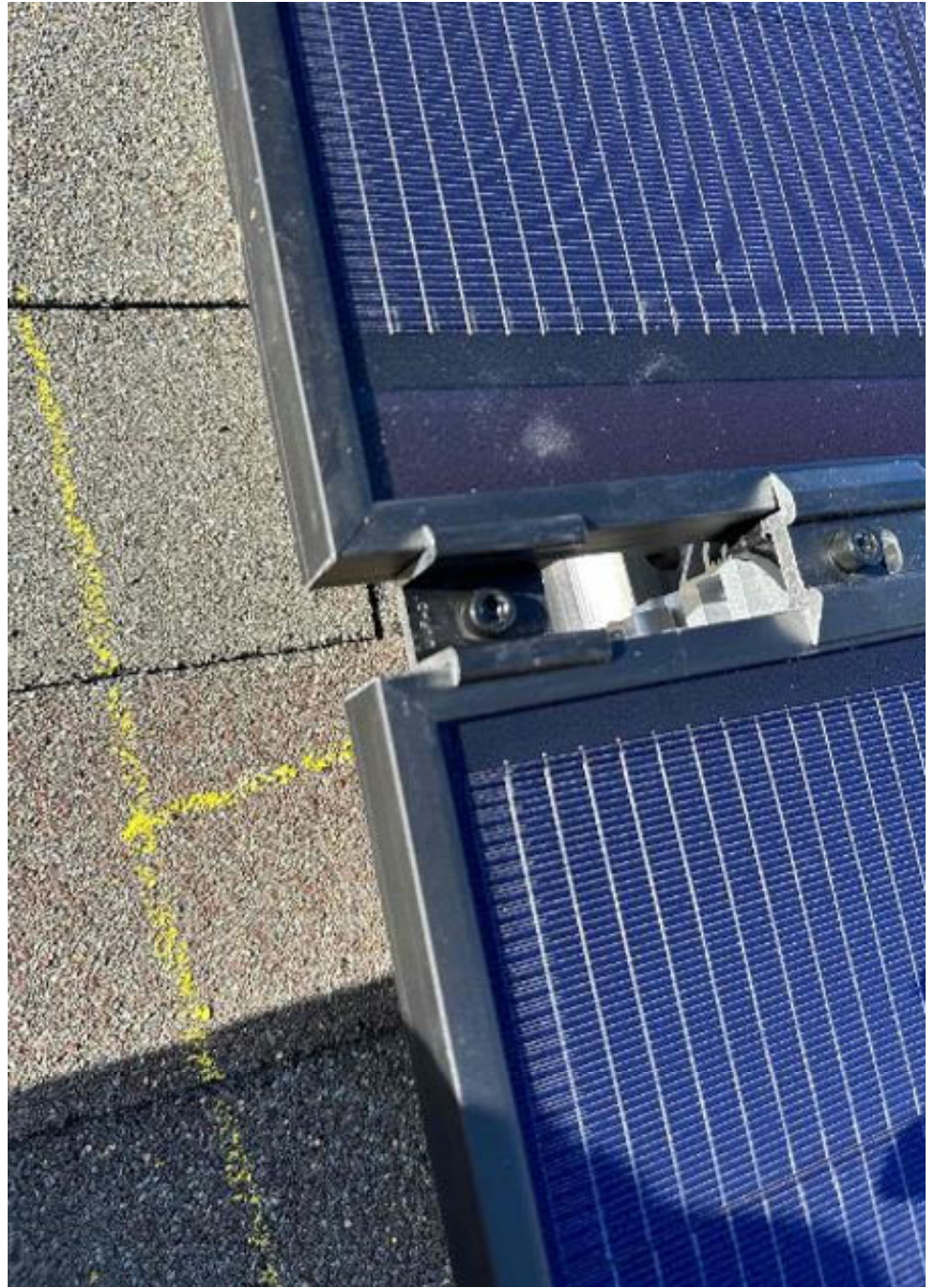














**FLASHKIT SFM TRIM**

**004200D**

FLASHKIT SFM TRIM COMP DARK  
Pack Size: 10  
Factory Code: 5-1



MFG/PO# 0045172-00 Manufacture date: 12/20/22-1/20/22 a 10039435046110



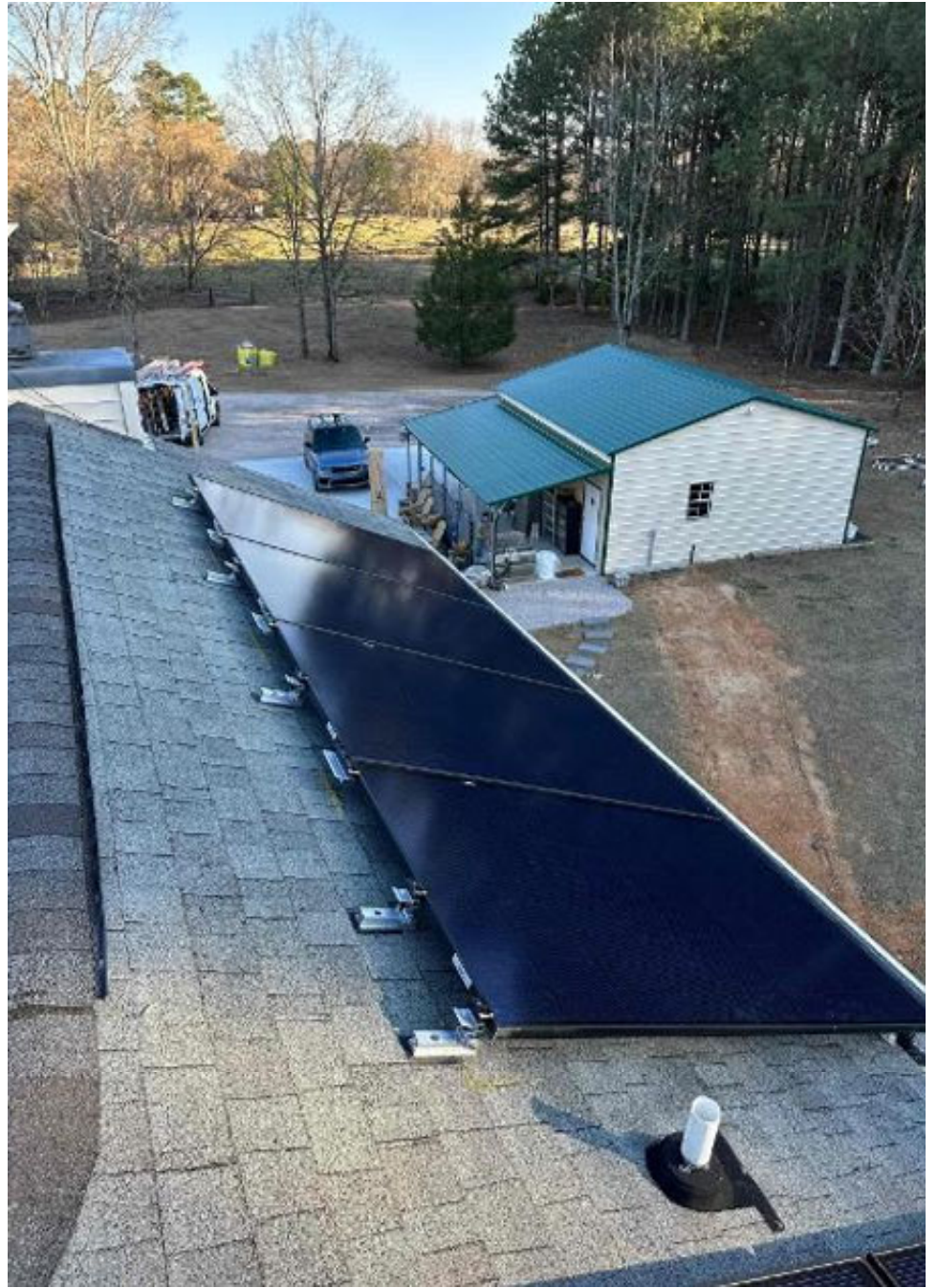
**FLASHKIT SFM SLIDERS**

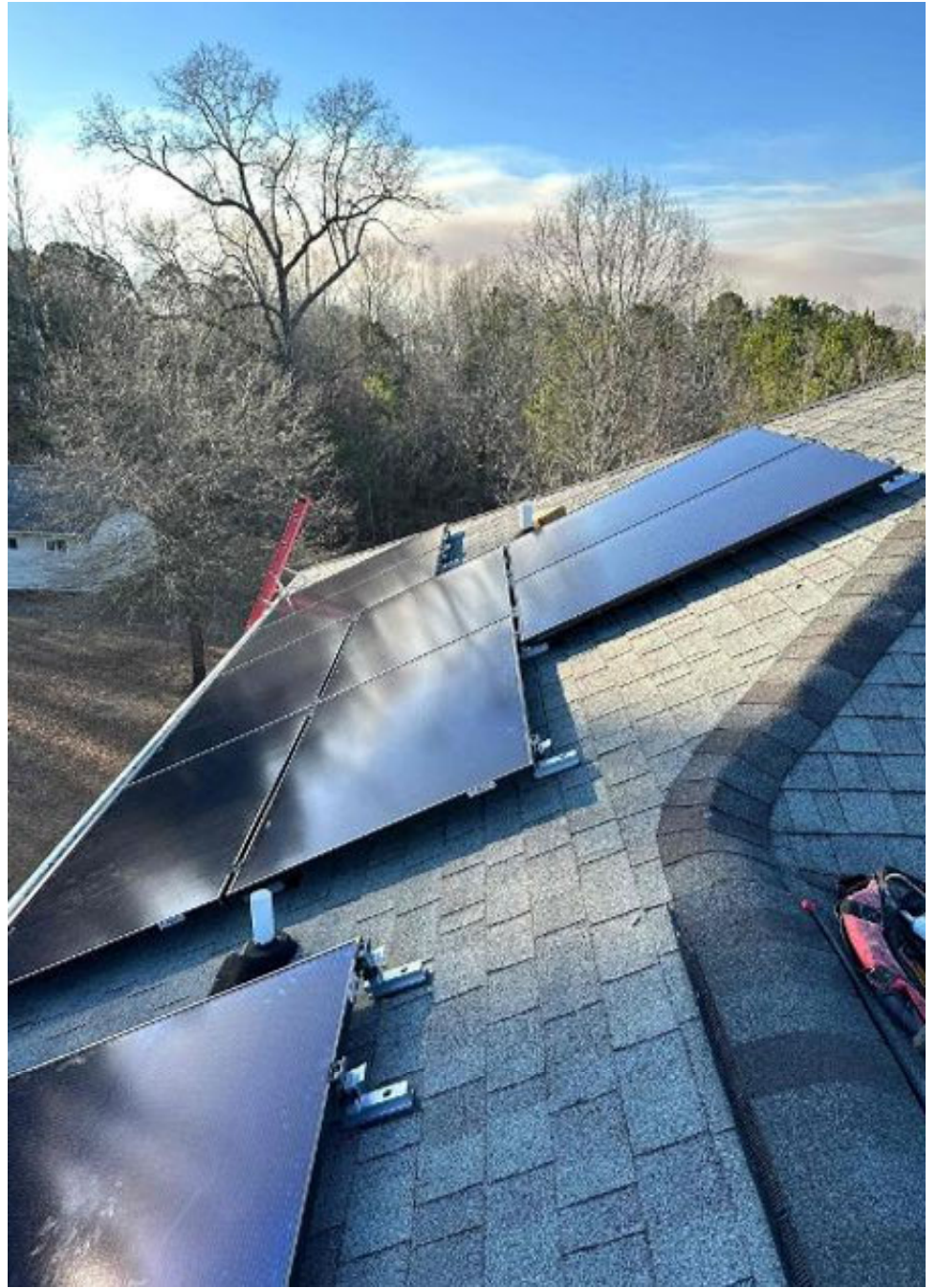
**004271D**

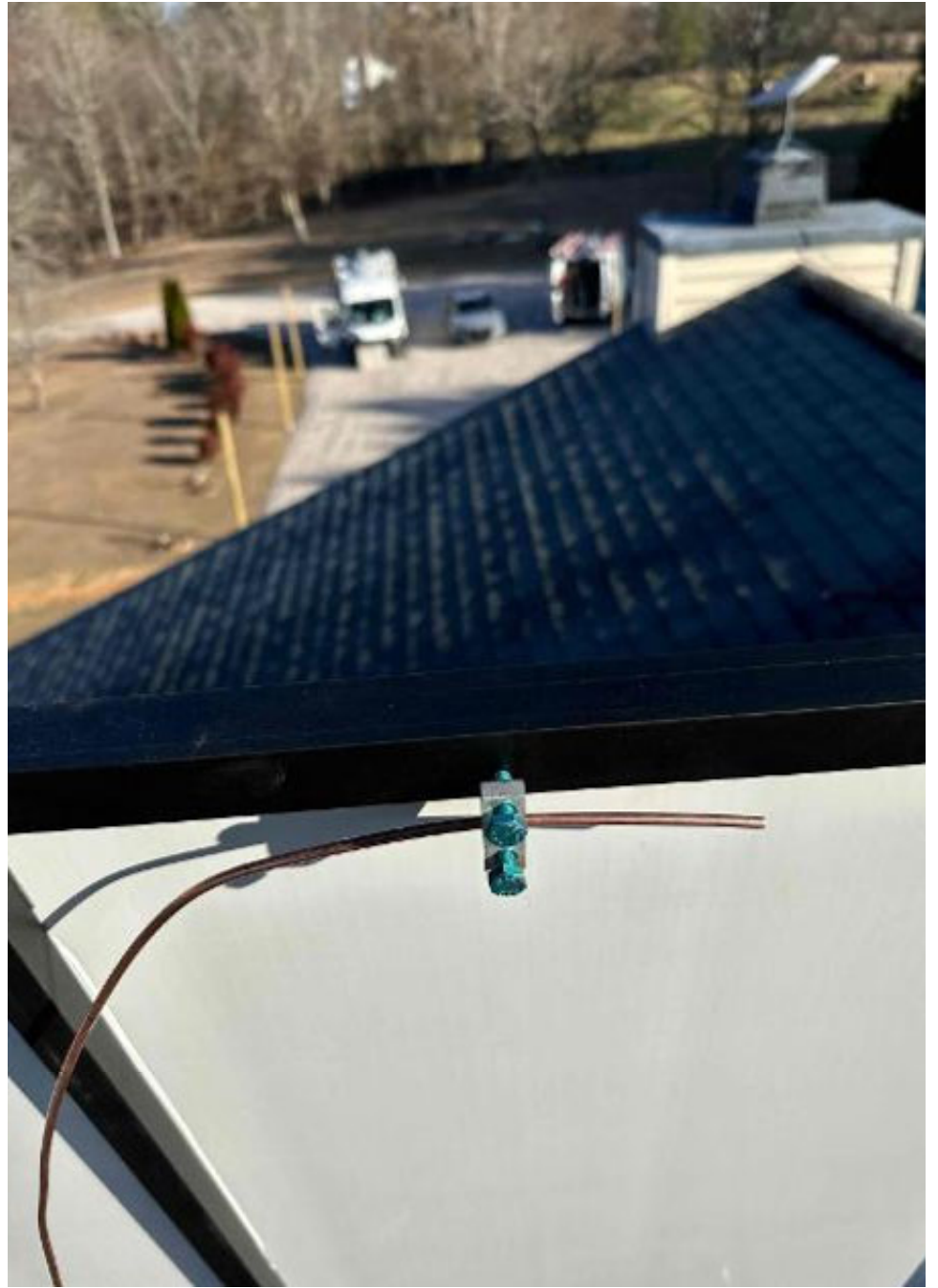
FLASHKIT SFM SLIDERS COMP DRK  
DARK Pack Size: 10  
Factory Code: 5-1

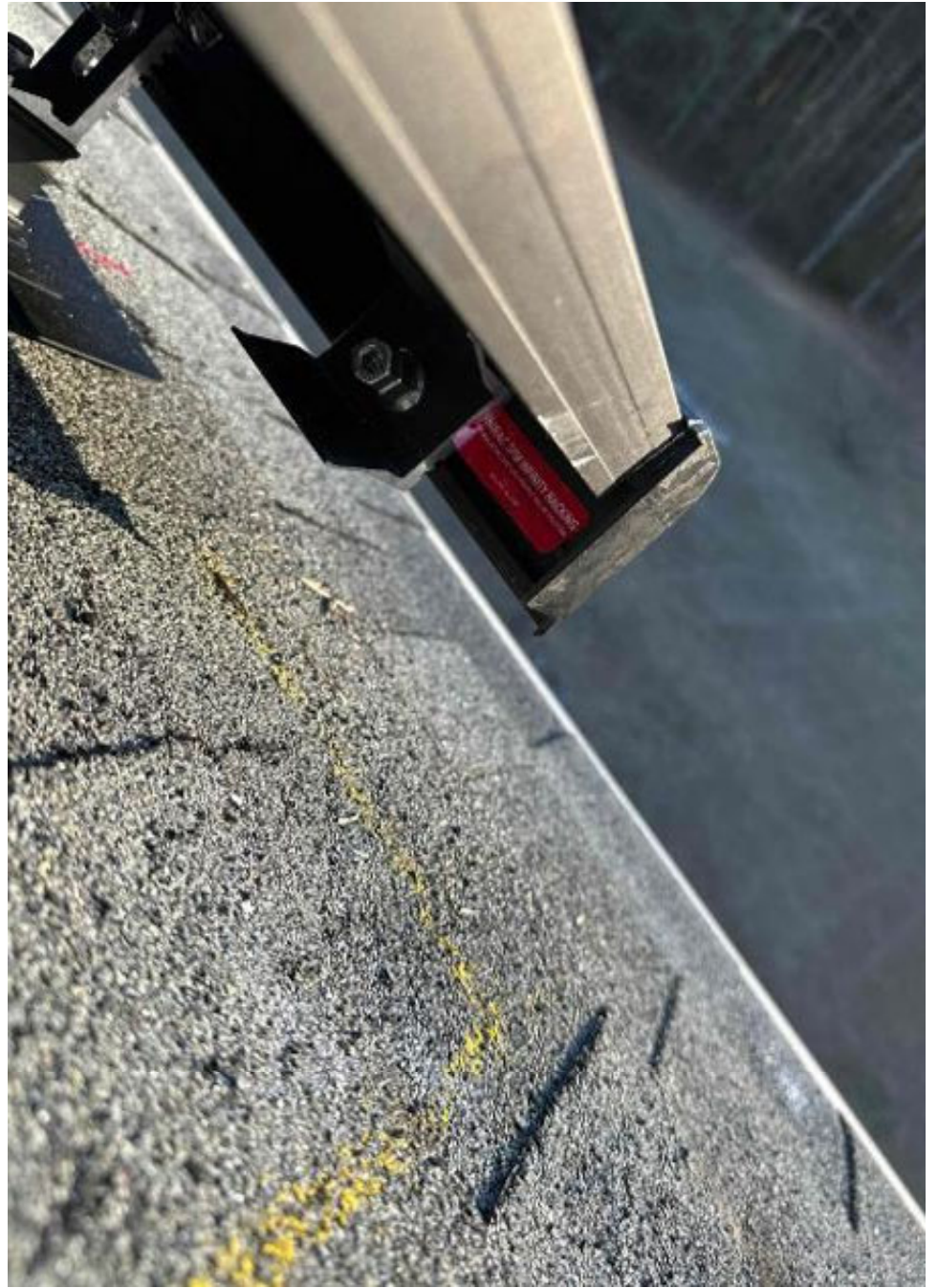


MFG/PO# 0045416-00 Manufacture date: 3/10/22-4/10/22 a 10039435213116











REC Alpha Pure-R Series  
REC420A Pure-R  
Serial Number: FBB-7005391783

Phone: +65 6495 6238  
www.recgroup.com

<ul style="list-style-type: none"> <li>Complies to UL 6180-1:2015</li> <li>Classed to UL 6180-1:2015</li> <li>Class and CSQ are UL-100</li> <li>UL File Number: 75647</li> </ul>	<ul style="list-style-type: none"> <li>Complies to IEC 61215-2:2016</li> <li>IEC M 2002078</li> </ul>		Power Output (Pmax)	420 W
			Watt Class Sorting	0/+10 W
<ul style="list-style-type: none"> <li>Complies to IEC 61215-2:2016</li> <li>IEC M 2002078</li> </ul>		Power Production Tolerance	+/- 3%	
		Rated Voltage (Vmp)	50.0 V	
		Rated Voltage (Vmp)	8.40 A	
		Rated Current (Imp)	99.4 V	
		Open Circuit Voltage (Voc) (+/- 3%)	8.89 A	
		Short Circuit Current (Isc) (+/- 3%)	1000 V	
		Maximum System Voltage (Vsys)	25 A	
		Maximum Series Fuse (DC) (UL)	25 A	
		Maximum Series Fuse (DC) (IEC)	25 A	
		Design Load	+4866 / -2666 Pa*	
		Maximum Test Load	+7000 / -4000 Pa*	
		Maximum Test Load	+7000 / -4000 Pa*	

\* Values at STC (1000 W/m<sup>2</sup>, AM 1.5, cell temp. 25°C)

This product complies with the CE mark and is certified to the following standards:  
 - EN 61215-2:2016 (IEC 61215-2:2016) for the photovoltaic module  
 - EN 61836-1:2016 (IEC 61836-1:2016) for the photovoltaic module

For field connection, use max. 4 mm<sup>2</sup> AWG1 UL PV wires insulated for a min. of 90°C  
 Made in Singapore by REC SOLAR PTE LTD  
 20 TUAS SOUTH AVENUE 14, SINGAPORE 637112, SINGAPORE

Europe Contact: REC Solar EMA GmbH  
 Bismarck 71a, 81547 Munich, Germany, Tel: +49 (0)89-442-35590  
 For other regions see: www.recgroup.com/contact

Manufactured: 11.08.2023

Warning electrical hazard. This module produces electricity when exposed to light  
 CAUTION: DO NOT DISCONNECT UNDER LOAD  
 Avertissement: Risque de choc électrique. Ce module solaire produit de l'électricité lorsqu'il est exposé à la lumière  
 ATTENTION: NE PAS DECONNECTER SOUS TENSION

For field connection, use max. 4 mm<sup>2</sup> AWG1 UL PV wires insulated for a min. of 90°C  
 Made in Singapore by REC SOLAR PTE LTD  
 20 TUAS SOUTH AVENUE 14, SINGAPORE 637112, SINGAPORE

Europe Contact: REC Solar EMA GmbH  
 Bismarck 71a, 81547 Munich, Germany, Tel: +49 (0)89-442-35590  
 For other regions see: www.recgroup.com/contact

REC Alpha Pure-R Series  
REC420A Pure-R  
Serial Number: FBB-7005393294

Phone: +65 6495 6238  
www.recgroup.com

<ul style="list-style-type: none"> <li>Complies to UL 6180-1:2015</li> <li>Classed to UL 6180-1:2015</li> <li>Class and CSQ are UL-100</li> <li>UL File Number: 75647</li> </ul>	<ul style="list-style-type: none"> <li>Complies to IEC 61215-2:2016</li> <li>IEC M 2002078</li> </ul>		Power Output (Pmax)	420 W
			Watt Class Sorting	0/+10 W
<ul style="list-style-type: none"> <li>Complies to UL 6180-1:2015</li> <li>Classed to UL 6180-1:2015</li> <li>Class and CSQ are UL-100</li> <li>UL File Number: 75647</li> </ul>	<ul style="list-style-type: none"> <li>Complies to IEC 61215-2:2016</li> <li>IEC M 2002078</li> </ul>		Power Production Tolerance	+/- 3%
			Rated Voltage (Vmp)	50.0 V
<ul style="list-style-type: none"> <li>Complies to UL 6180-1:2015</li> <li>Classed to UL 6180-1:2015</li> <li>Class and CSQ are UL-100</li> <li>UL File Number: 75647</li> </ul>	<ul style="list-style-type: none"> <li>Complies to IEC 61215-2:2016</li> <li>IEC M 2002078</li> </ul>		Rated Voltage (Vmp)	8.40 A
			Rated Current (Imp)	99.4 V
<ul style="list-style-type: none"> <li>Complies to UL 6180-1:2015</li> <li>Classed to UL 6180-1:2015</li> <li>Class and CSQ are UL-100</li> <li>UL File Number: 75647</li> </ul>	<ul style="list-style-type: none"> <li>Complies to IEC 61215-2:2016</li> <li>IEC M 2002078</li> </ul>		Open Circuit Voltage (Voc) (+/- 3%)	8.89 A
			Short Circuit Current (Isc) (+/- 3%)	1000 V
<ul style="list-style-type: none"> <li>Complies to UL 6180-1:2015</li> <li>Classed to UL 6180-1:2015</li> <li>Class and CSQ are UL-100</li> <li>UL File Number: 75647</li> </ul>	<ul style="list-style-type: none"> <li>Complies to IEC 61215-2:2016</li> <li>IEC M 2002078</li> </ul>		Maximum System Voltage (Vsys)	25 A
			Maximum Series Fuse (DC) (UL)	25 A
<ul style="list-style-type: none"> <li>Complies to UL 6180-1:2015</li> <li>Classed to UL 6180-1:2015</li> <li>Class and CSQ are UL-100</li> <li>UL File Number: 75647</li> </ul>	<ul style="list-style-type: none"> <li>Complies to IEC 61215-2:2016</li> <li>IEC M 2002078</li> </ul>		Maximum Series Fuse (DC) (IEC)	25 A
			Design Load	+4866 / -2666 Pa*
<ul style="list-style-type: none"> <li>Complies to UL 6180-1:2015</li> <li>Classed to UL 6180-1:2015</li> <li>Class and CSQ are UL-100</li> <li>UL File Number: 75647</li> </ul>	<ul style="list-style-type: none"> <li>Complies to IEC 61215-2:2016</li> <li>IEC M 2002078</li> </ul>		Maximum Test Load	+7000 / -4000 Pa*
			Maximum Test Load	+7000 / -4000 Pa*

\* Values at STC (1000 W/m<sup>2</sup>, AM 1.5, cell temp. 25°C)

This product complies with the CE mark and is certified to the following standards:  
 - EN 61215-2:2016 (IEC 61215-2:2016) for the photovoltaic module  
 - EN 61836-1:2016 (IEC 61836-1:2016) for the photovoltaic module

For field connection, use max. 4 mm<sup>2</sup> AWG1 UL PV wires insulated for a min. of 90°C  
 Made in Singapore by REC SOLAR PTE LTD  
 20 TUAS SOUTH AVENUE 14, SINGAPORE 637112, SINGAPORE

Europe Contact: REC Solar EMA GmbH  
 Bismarck 71a, 81547 Munich, Germany, Tel: +49 (0)89-442-35590  
 For other regions see: www.recgroup.com/contact

Manufactured: 11.08.2023

Warning electrical hazard. This module produces electricity when exposed to light  
 CAUTION: DO NOT DISCONNECT UNDER LOAD  
 Avertissement: Risque de choc électrique. Ce module solaire produit de l'électricité lorsqu'il est exposé à la lumière  
 ATTENTION: NE PAS DECONNECTER SOUS TENSION

For field connection, use max. 4 mm<sup>2</sup> AWG1 UL PV wires insulated for a min. of 90°C  
 Made in Singapore by REC SOLAR PTE LTD  
 20 TUAS SOUTH AVENUE 14, SINGAPORE 637112, SINGAPORE

Europe Contact: REC Solar EMA GmbH  
 Bismarck 71a, 81547 Munich, Germany, Tel: +49 (0)89-442-35590  
 For other regions see: www.recgroup.com/contact







## Production

Today: 0.00 Wh

Lifetime: 0.00 Wh

## Consumption

Today: 0.00 Wh

Lifetime: 0.00 Wh

Gr

IEE

Pe

To  
Not recommended for scanning devices in a multi-IQ Gateway system.

PLC SCAN

Powerline Communications Noise Detection



Scan completed

IQ Microinverters : 15/15

Done

IQ Gateway successfully connected to Enphase  
Cloud and Installer Toolkit

## IQ Gateway Connectivity status



Wi-Fi

Connected



192.168.1.43



Ethernet



Cellular



Software up-to-date

Current software version 07.03.466

START PROVISIONING DEVICES



Diagnostic Tools

