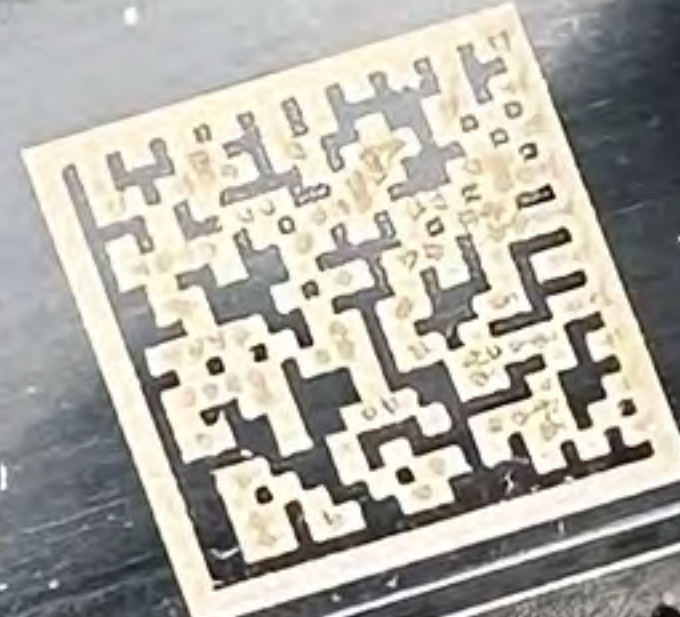






DC Output: 440W/5-60V/15A  
DC Input: 8-60V/14.5A  
Open Circuit Voltage: 1V  
NA02 SM3623-01812E3B9-C6  
Mexico S440-1GM4MRM



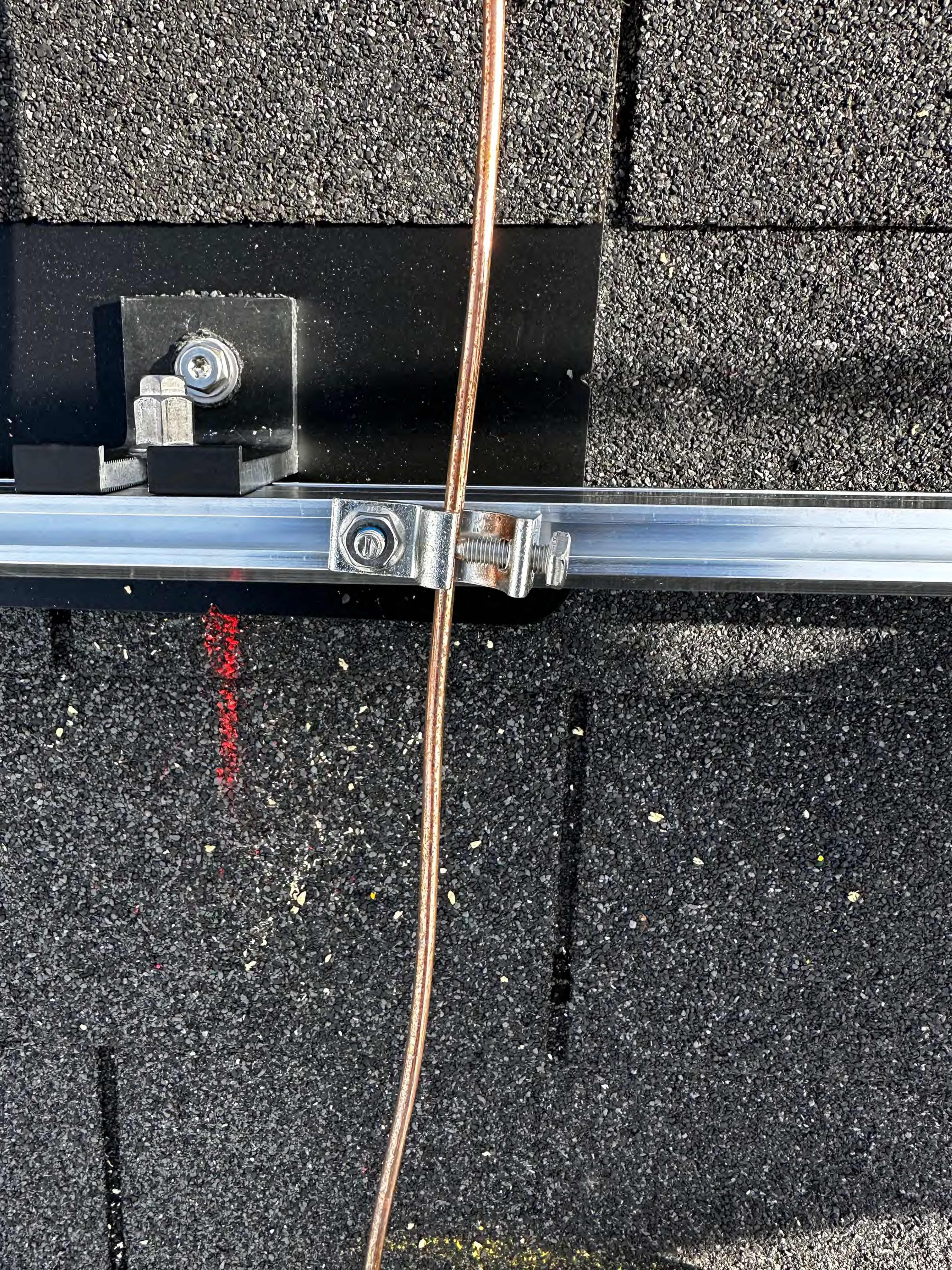
MADE IN:





90°C Wet 1000V or 2000V Sun Res 40°C VW-1 HongLin













E445972 (UL) PV W

MODULE

STOP





PV Positive

PV Negative

Neutral

For terminal torque loads, see Table on page 5 of Instruction Manual

USE 2-6000-01-001

ckMoun







Quick Mount™  
Patent Pending





203723253620102079

We aim for a greener tomorrow with completely clean energy solutions

# Q.PEAK DUO BLK ML-G10+ 405

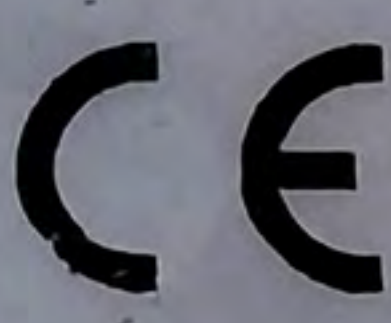
## PERFORMANCE AT STANDARD TEST CONDITIONS\*

Nominal Power* (+5W/-0W)	$P_{MPP}$	[W]	405
Short circuit current*	$I_{SC}$	[A]	11.17
Open circuit voltage*	$V_{OC}$	[V]	45.34
Current at maximum power	$I_{MPP}$	[A]	10.38
Voltage at maximum power	$V_{MPP}$	[V]	37.39
Maximum system voltage	$V_{SYS}$	[V]	1000(IEC) 1000(UL)
Weight	M	[kg/lbs]	22.0 / 48.5

\* Measurement tolerances:  $P_{MPP} \pm 3\%$ ;  $I_{SC}, V_{OC} \pm 5\%$  at STC:  $1000 W/m^2, 25 \pm 2^\circ C$ , AM 1.5 according to IEC 60904-3. Data given are rated (nominal) values. IEC 61215:2016; IEC 61730:2016.



www.tuv.com  
ID1111220277



203723253620102079

# Qcells

Assembled in USA



### DANGER!

#### Risk of electric shock!

DO NOT connect or disconnect plug contacts while system is under load current. Refer to the Installation and Operation Manual before installing, operating or servicing this unit.

### DANGER!

#### Risque de choc électrique!

NE PAS connecter ou déconnecter les connecteurs lorsque le système est en charge. Consultez le manuel d'installation et d'utilisation avant installation, utilisation et entretien du produit.

**Fire Rating:** Class C / Type 2

**Fuse Rating:** 20A

U.S. Patent No. 9,893,215  
(solar cells)

Hanwha Q CELLS USA Inc.,  
300 Nexus Drive, Dalton GA 30721, USA

EMAIL [service@q-cells.com](mailto:service@q-cells.com)  
WEB [www.qcells.com](http://www.qcells.com)

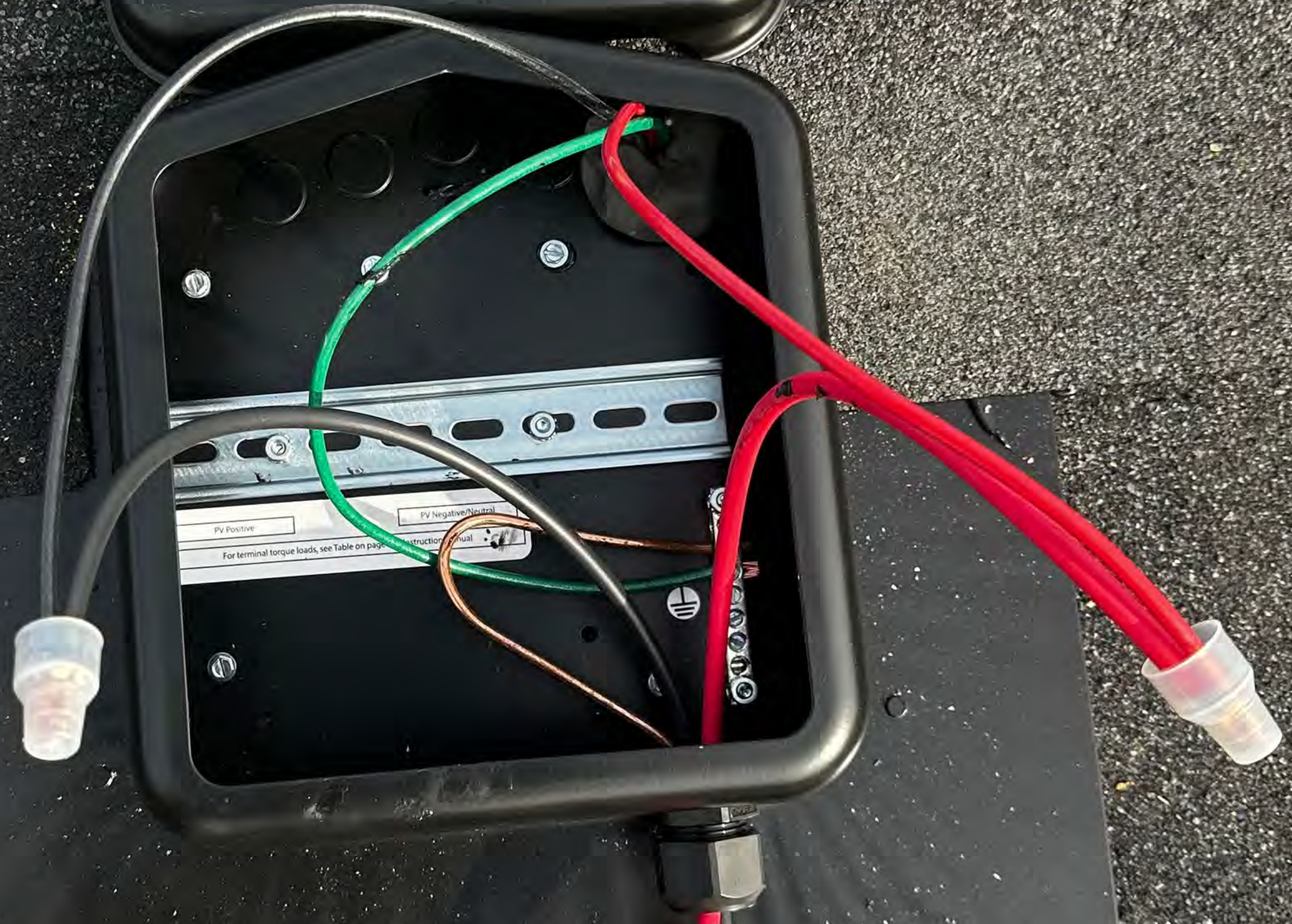


**SOLADECK**  
www.soladeck.com  
UL Listed  
E184937

Max Ratings: 600VDC/15 AMP/240VAC/60 AMP/Short circuit 10KA, Ambient Temp 75C

<b>WARNING</b>	<b>AVERTISSEMENT</b>
⚠️	⚠️

94 Mary Robertson St Dunn NC



09/12/23 2152 2M8 9909 MA 4P3L44

PV Positive  
PV Negative/Neutral  
For terminal torque loads, see table on page 1 of the instruction manual.







12

11

10

9

8

PR-APPB  
NO. 387C

7

6

5

4

3

STANLEY

2

1





**WARNING:**  
PHOTOVOLTIC POWER SOURCE

MADE IN USA

FRANKLIN

1 1/2" BPS SCH 40 STEEL CONDUIT

1/2" SCH 40



