



701-00537-02

PA
PANEL BOARD
ACCESSORY
#1-1-98
30-18141

SP
PANEL BOARD
#30-18141
DISTRIBUTION

L1
L2

EMERSON
CONTROL AND
POWER SYSTEMS
A GE COMPANY

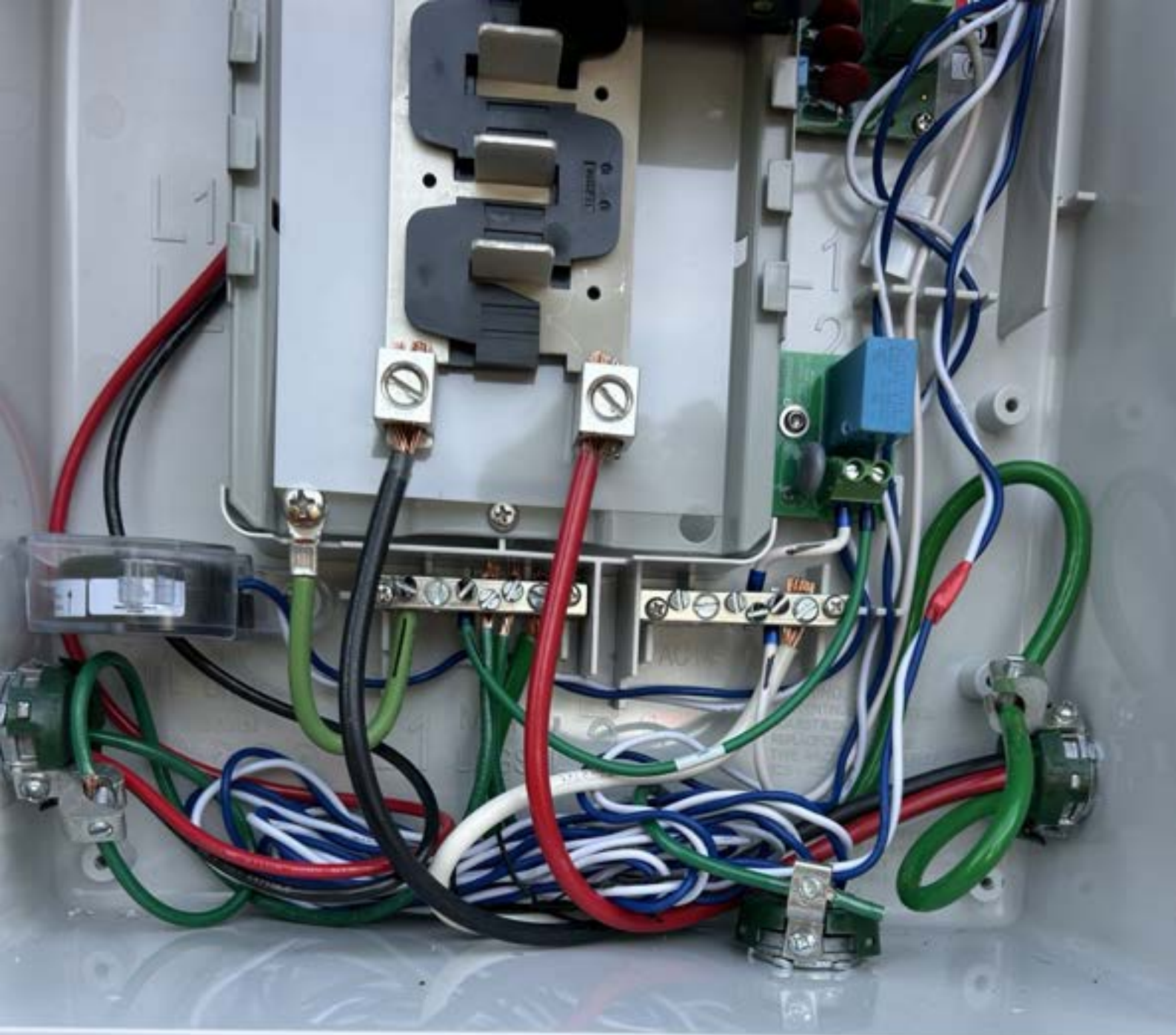




PHOTO ULTRA 1000 VCR 650

 ENPHASE.

RAPID SHUTDOWN SWITCH FOR SOLAR PV SYSTEM

WARNING
POWER SOURCE OUTPUT CONNECTION DO NOT RELOCATE THIS OVERCURRENT DEVICE

WARNING
THIS EQUIPMENT FED BY MULTIPLE SOURCES. TOTAL RATING OF ALL OVERCURRENT DEVICES, EXCLUDING MAIN SUPPLY OVERCURRENT DEVICE, SHALL NOT EXCEED AMPCACITY OF BUSBAR.

EATON

TURN THE CIRCUIT BREAKER OFF BEFORE WORKING ON THE ELECTRICAL SYSTEM

WARNING
ELECTRIC SHOCK CAN BE FATAL. ALWAYS USE CAUTION.

AMERICAN MADE

AMERICAN PHASE

OUTER NORMAL

PHOTO ULTRA 1000 VCR 650

PHOTO ULTRA 1000 VCR 650



100V 50/60 Hz
100V 50/60 Hz

100V 50/60 Hz
100V 50/60 Hz

C330

GENERAL TESTING
FOR USE IN THE FIELD
FOR TESTING PURPOSES ONLY
DO NOT USE FOR OTHER PURPOSES
DO NOT USE FOR OTHER PURPOSES



0330

Spectrum

WARNING
DO NOT TOUCH
THIS SURFACE
IT IS HOT

TURN RAPID SHUTDOWN SWITCH TO THE 'OFF' POSITION TO SHUT DOWN PV SYSTEM AND REDUCE SHOCK HAZARD IN THE ARRAY

RAPID SHUTDOWN SWITCH FOR SOLAR PV SYSTEM

WARNING
ELECTRIC SHOCK HAZARD
TERMINALS ON THE LINE AND LOAD SIDES MAY BE ENERGIZED IN THE OPEN POSITION

AC DISCONNECT
PHOTOVOLTIC SYSTEM POWER SOURCE

RATED AC OUTPUT CURRENT	8.47 AMPS
NORMAL OPERATING AC VOLTAGE	240 VOLTS

USA

CAUTION: SOLAR ELECTRIC SYSTEM CONNECTED

WARNING
SOLAR POWER SUPPLY
SOURCE'S UTILITY GRID
AND PV SOLAR ELECTRIC SYSTEM

CAUTION
SOLAR POWER SUPPLY

CAUTION: SOLAR ELECTRIC SYSTEM CONNECTED

WARNING
SOLAR POWER SUPPLY
SOURCE'S UTILITY GRID
AND PV SOLAR ELECTRIC SYSTEM

PHOTOVOLTIC SYSTEM kWh METER

CONSUMER UNIT

EATON

Reserve City Safety, Inc.
Ingeniería de seguridad y control general
de sistemas de energía eléctrica
MEXICO 2017-2018

Complete safety instructions
should be read and understood
before attempting to install or
maintain the equipment.

Las instrucciones de seguridad
deben leerse y entenderse
completamente antes de
instalar o mantener el equipo.

Made in U.S.A. - Manufactured in U.S.A.

⚠ DANGER
ELECTRIC SHOCK HAZARD
TERMINALS ON THE LINE AND
LOAD SIDES MAY BE ENERGIZED
IN THE OPEN POSITION

⚠ PELIGRO
RIESGO DE GOLPE ELÉCTRICO
LOS TERMINALES EN LA LÍNEA Y
EN LOS LADOS DE CARGA PUEDE
ESTAR ENERGIZADOS EN
LA POSICIÓN ABIERTA



**SOLAR PV SYSTEM
EQUIPPED WITH
RAPID SHUTDOWN**



TURN RAPID SHUTDOWN SWITCH TO
THE "OFF" POSITION TO SHUT DOWN
PV SYSTEM AND REDUCE
SHOCK HAZARD IN THE ARRAY

**RAPID SHUTDOWN
SWITCH FOR
SOLAR PV SYSTEM**

⚠ WARNING
ELECTRIC SHOCK HAZARD
TERMINALS ON THE LINE AND
LOAD SIDES MAY BE ENERGIZED
IN THE OPEN POSITION



AC DISCONNECT
PHOTOVOLTAIC SYSTEM
POWER SOURCE

RATED AC
OUTPUT CURRENT **8.47** AMPS

NOMINAL OPERATING
AC VOLTAGE **240** VOLTS

**CAUTION: SOLAR EL
SYSTEM CONNEC**











MEMPHIS



3-5-2

INDUSTRIAL 2" DIA. 3000'





PHOTOVOLTAIC POWER SOURCE







PHOTOVOLTAIC POWER SOURCE

PHOTOVOLTAIC POWER SOURCE





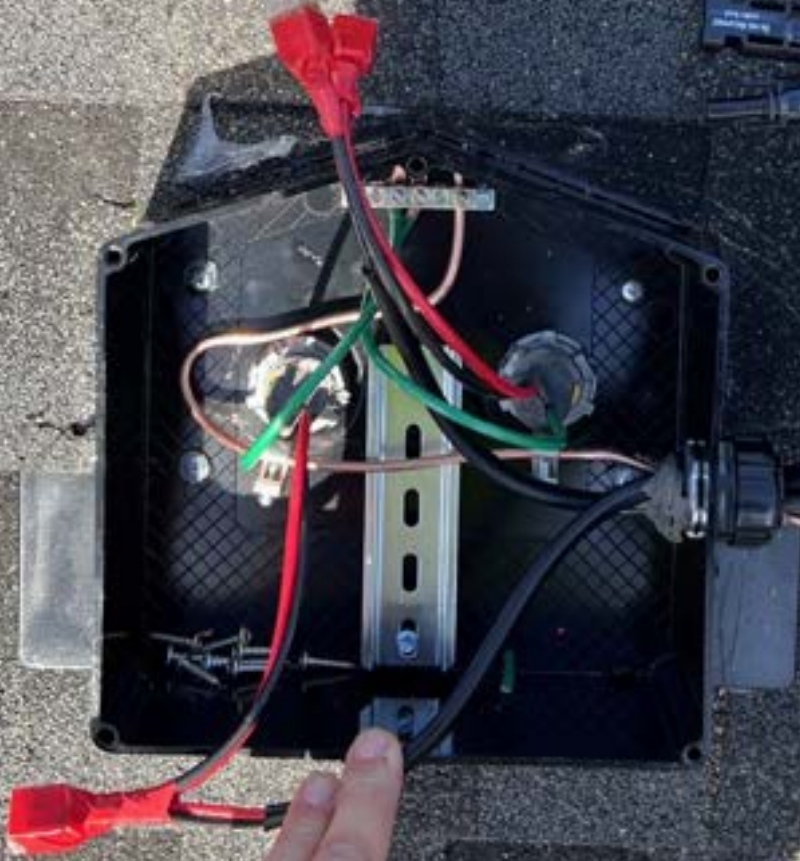








Jeanani Silva
211 Old Salem Dr,
Spring Lake, NC
7 panels to have





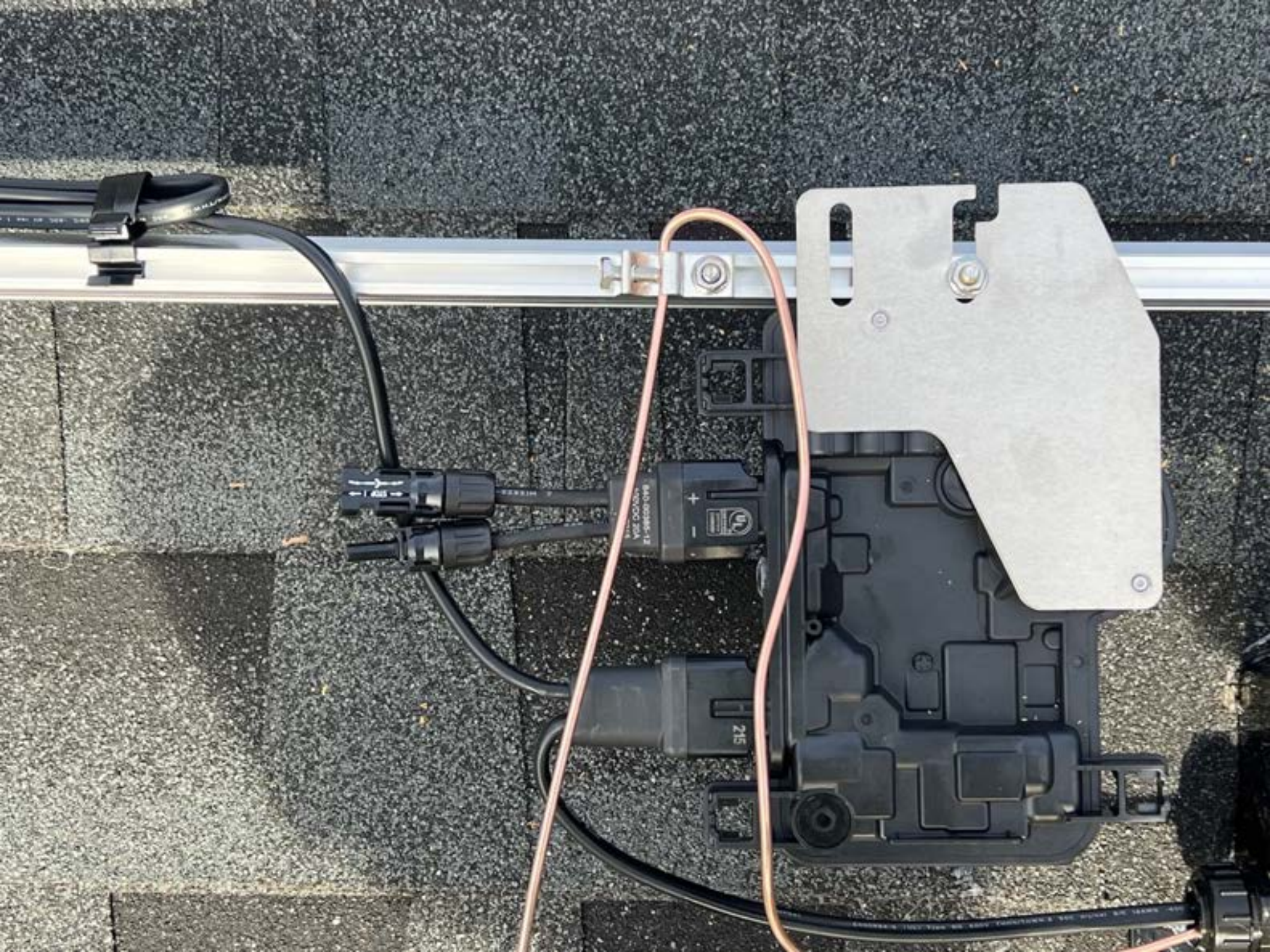


Jennani silva
Jump box stud





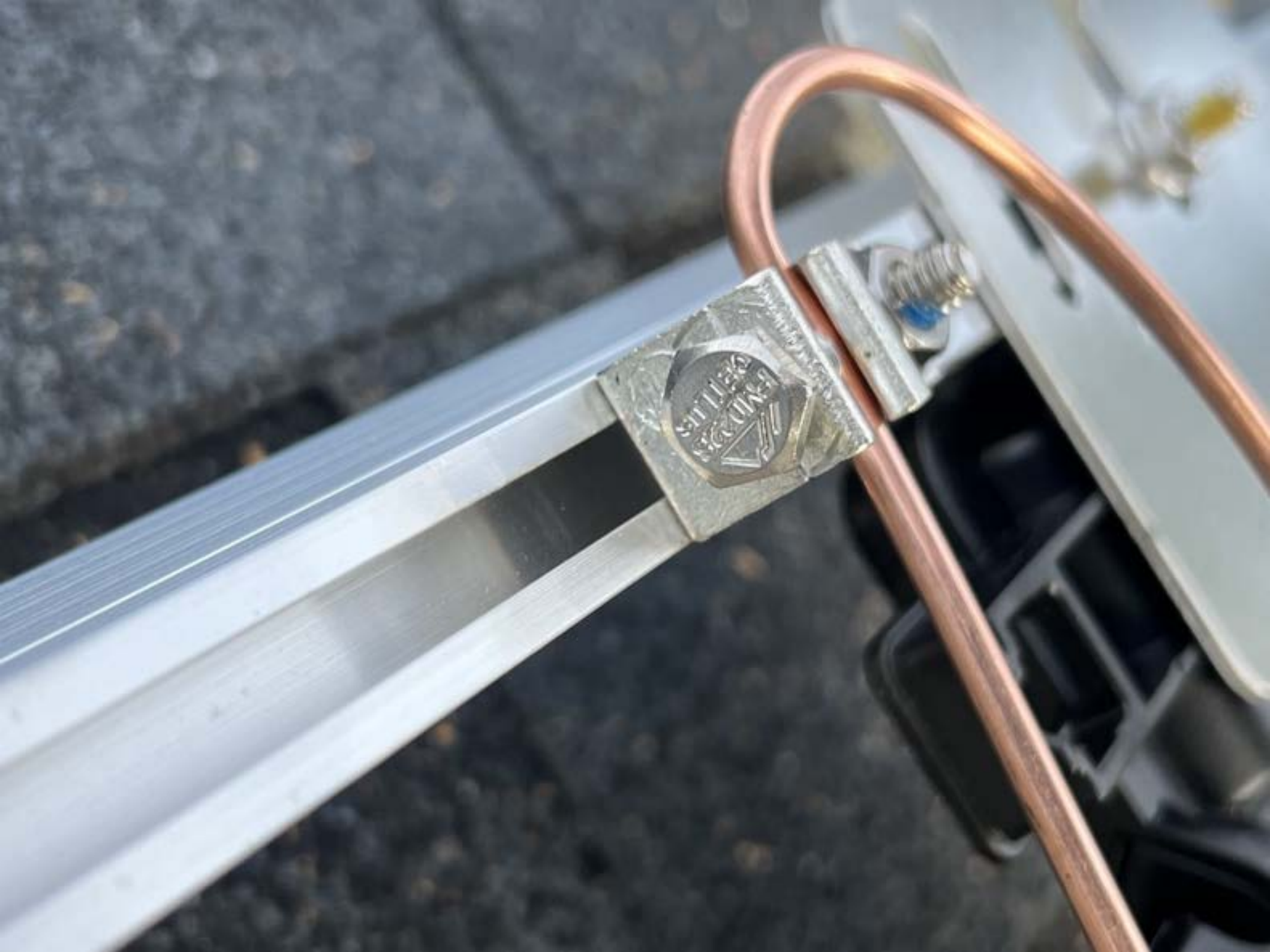




40A

EVC-12
400VAC 20A

215







211

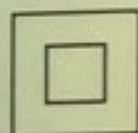


PHOTOVOLTAIC MODULE

Modules assembled in the USA from solar cells made in Vietnam

Solar Module Type : JKM395M-72HBL-V

Maximum Power(Pmax)	395W
Power Tolerance	±3%
Maximum Power Voltage (Vmp)	39.90V
Maximum Power Current(Imp)	9.90A
Open Circuit Voltage(Voc)	48.80V±3%
Short Circuit Current(Isc)	10.54A±4%
Maximum System Voltage	1500VDC
Maximum Series overcurrent protective device rating	20A
Operating Temperature	-40°C ~ +85°C
Protection Class	II
Module Fire Performance	Type 1(UL1703)/Class C(IEC61730)
Weight	22.5(kg)
Dimension	2008×1002×40(mm)
STC:	1000W/m ² , AM1.5, 25°C
Current Sorting	I1



System fire Class Rating: See installation Instructions for Installation Requirements to Achieve a Specified System Fire Class Rating with this Product
The fire rating is Class C in Canada



WARNING

ONLY qualified personnel should install or perform maintenance work on these modules
BE AWARE of dangerous high DC voltage when connecting modules
DO NOT damage or scratch the rear surface of the module
SEE module literature for appropriate mating connectors



AVERTISSEMENT

SEUL les professionnels peuvent installer et maintenir les éléments
PRENDRE GARDE de la haute tension continue lorsque les éléments sont connectés
IL EST interdit d'endommager ou d'érafler l'envers des éléments
VOIR les infos modules pour les connecteurs de raccordement appropriés

For field connections, use 12 AWG wire insulated for a minimum of 90°C, rated for wet conditions and resistant to ultra violet radiation(where exposed)

