

Grid Monitoring Completed. ✕

Pairing Completed. ✕

← **solar_{edge}** SN 740E13A1-36 ⋮

Inverter

SN 740E13A1-36

Summary



Power
7.84 kW



Voltage
251 Vac



Frequency
60 Hz

P_OK: 28 of 28

Optimizers Communicating

Server Comm. i

S_OK
Wi-Fi

Status
Production

Power Limit
10 kW

Switch is
On

Cos Phi
1

Q
204 VAR

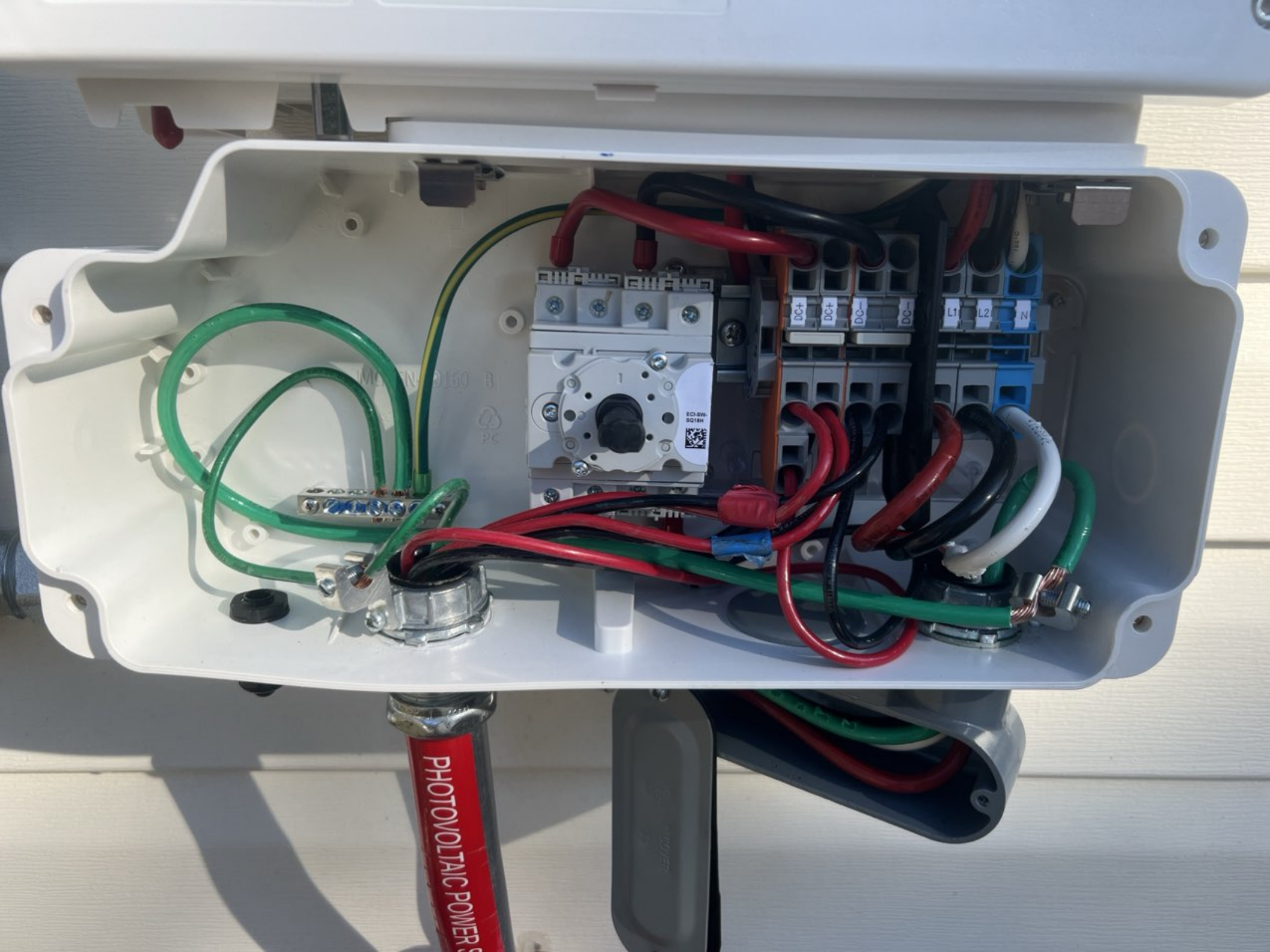
Country
US 240V

DC Voltage
399 Vdc

[Disconnect from device](#)







ECI-SW-DC18H

DC+ DC- L1 L2 N

PHOTOVOLTAIC POWER

ME N 0150 B

PC


solaredge SE10000H-US
**Grid Support Utility Interactive
Non-Isolated Photovoltaic Inverter**

Operating Voltage Range 380 - 480Vdc
Max Input Current 27Adc
Max Continuous Output Power 10000Wac
Voltage Min-Nom-Max 211 - 240 - 264Vac
Max Continuous Output Current 42Aac
Max Output Fault Current 56.6Aac
Max Utility Backfeed Current 0Aac
Frequency Min-Nom-Max 59.3 - 60.0 - 60.5Hz
Output Power Factor +/- 0.95 - 1
Max Ambient Temperature 60 C
Enclosure IP65 / Type 3R
With integrated ground fault protection per NEC 690.35 (C)
Type 1 Photovoltaic Arc-Fault Circuit-Protection
COMPLIES WITH SUPPLEMENTAL INTERCONNECTION REQUIREMENTS
Wi-Fi Password: g8XFp14A
Activation: PadJ sD8x K/0W 8wIS 2Kof S5DT 2/8 =

WIFI MAC:
84:D6:C5:45:49:67
ZigBee MAC:



PN: SE10000H - US000BEU4
SN: SV4322 - 0740E13A1 - 36

solaredge 

PHOTOVOLTAIC RAPID
SHUTDOWN SYSTEM





36

MISSION SOLAR
Quality

Model Number: M5E3883AH
 Rated Maximum Power: 388.10(±5%) W
 Open-Circuit Voltage: 45.2 V
 Voltage at Pmax: 37.0 V
 Short-Circuit Current: 11.24 A
 Current at Pmax: 10.88 A
 Max. System Voltage: 1000 V

Max. Service temperature protective electrical hardware required: None (rating dependent) test condition: 30 °C
 AMB-1.5E-1000W/m² Tc=25°C

The field operations, use Ca only, 12AWG (UL, Cabela's), 600V (EIA, ASEA) wires connected to a maximum of 60°C, rated for wet conditions, and resistant to ultra-violet radiation (where required). See installation manual for PV connector safety and compatibility. Nichtverwendbar bei zu hoher elektrischer. Ein modulare Einheit des Herstellers übersteigt die Temperatur des Moduls. Bei zu hoher Temperatur, brechen Sie ab, bevor Sie die Produktion zu starten, für jede Einheit zu tun.

Pre-Stamp: Type 1
 Class of Equipment: Class II
 Design Load: Minimum 1600 lbs (max 1600 lbs track load)

Warning:
 PV modules generate voltage even with very weak light. Do not open the junction box. Use modules PV producing tension même en faible lumière. Ne pas ouvrir la boîte de jonction.

UL LISTED
 TÜV
 CE
 ASSEMBLED IN THE USA

Do Not Remove 1813CEC-ES

SolarEdge Technologies Ltd
 SolarEdge Technologies GmbH
 Werner-Eckert-Str. 6/81829
 Munich/Germany

FC

SolarEdge Technologies Ltd.
 Power Optimizer

SolarEdge Technologies GmbH/
 Werner-Eckert-Str. 6/81829
 Munich/Germany

CAUTION
 HOT SURFACES-TO REDUCE THE RISK OF BURNS-DO NOT TOUCH. RISK OF ELECTRIC SHOCK-WHEN THE PHOTOVOLTAIC ARRAY IS EXPOSED TO LIGHT, IT SLIPPIES A DC VOLTAGE TO EQUIPMENT. COVER PV MODULE WITH OPACQUE MATERIAL BEFORE CONNECTING OR DISCONNECTING THIS OPTIMIZER. DURING FAULT, ZERO CURRENT IS SOURCED INTO DC ARRAY BY CONVERTER.

WARNING ELECTRIC SHOCK HAZARD- THE DC CONDUCTORS OF THIS PHOTOVOLTAIC ARRAY ARE UNGROUND AND MAY BE ENERGIZED.

AVERTISSEMENT
 RISQUE DE CHOC ELECTRIQUE- QUAND LE CHAMP PHOTOVOLTAIQUE EST EXPOSE A LA LUMIERE, UNE TENSION CC EST FOURNIE A CET EQUIPEMENT. SURFACES CHAUDES- NE PAS TOUCHER. AFIN DE REDUIRE LES RISQUES DE BRULURES LE COUVRANT DE RETOUR INJECTE PAR LE CONVERTISSEUR EN CAS DE DEFAILLANCE DANS LE MODULE PV EST TOUJOURS NUL.











018141858-9F

Do Not Remove



18141858-9F



SolarEdge Technologies Ltd.
SolarEdge Technologies GmbH/
Werner-Fechter-Straße 6/181829
Munich/Germany



CAUTION

HOT SURFACES TO REDUCE THE RISK OF BURNS-DO NOT TOUCH. RISK OF ELECTRIC SHOCK-WHEN THE PHOTOVOLTAIC ARRAY IS EXPOSED TO LIGHT, IT SUPPLIES A DC VOLTAGE TO EQUIPMENT. COVER PV MODULE WITH OPAQUE MATERIAL BEFORE CONNECTING OR DISCONNECTING THIS OPTIMIZER. DURING FAULT, ZERO CURRENT IS SOURCED INTO DC ARRAY BY CONVERTER.



SolarEdge Technologies Ltd.
Power Optimizer
SolarEdge Technologies GmbH/
Werner-Fechter-Straße 6/181829
Munich/Germany

WARNING ELECTRIC SHOCK HAZARD. THE DC CONDUCTORS OF THIS PHOTOVOLTAIC SYSTEM ARE UNGROUNDED AND MAY BE ENERGIZED.

AVERTISSEMENT

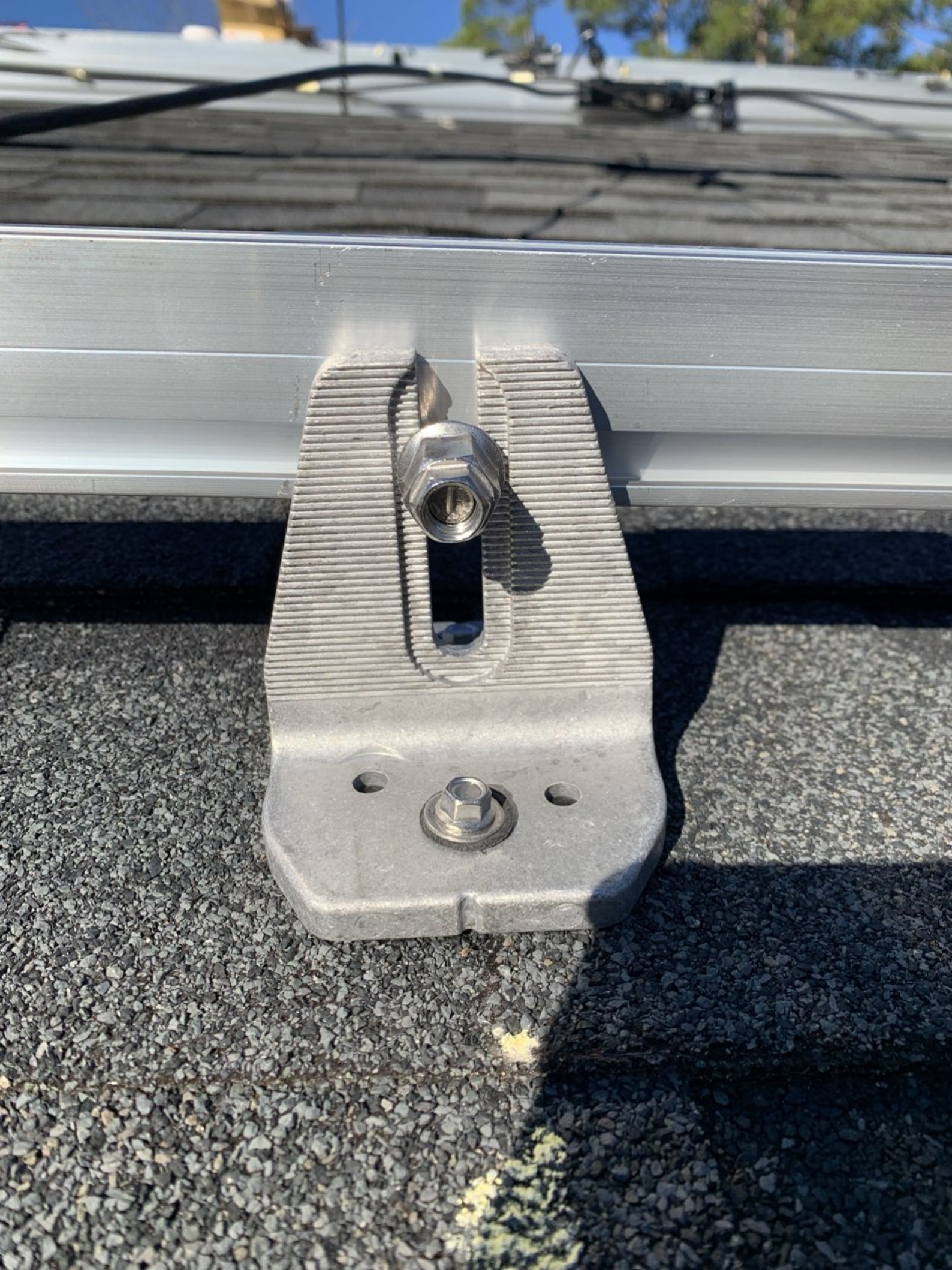
RISQUE DE CHOC ELECTRIQUE: QUAND LE CHAMP PHOTOVOLTAIQUE EST EXPOSE A LA LUMIERE, UNE TENSION CC EST FOURNIE A CET EQUIPEMENT. SURFACES CHAUDES: NE PAS TOUCHER. AFIN DE REDUIRE LES RISQUES DE BRULURES LE COURANT DE RETOUR INJECTE PAR LE CONVERTISSEUR EN CAS DE DEFAILLANCE DANS LE MODULE PV EST TOUJOURS NUL.



STRING

MODULE

Do not disconnect under load





MARIA T FLORES-ZARATE

35 STONEWOOD LN SANFORD NC
27332



JADEN JAROBİ

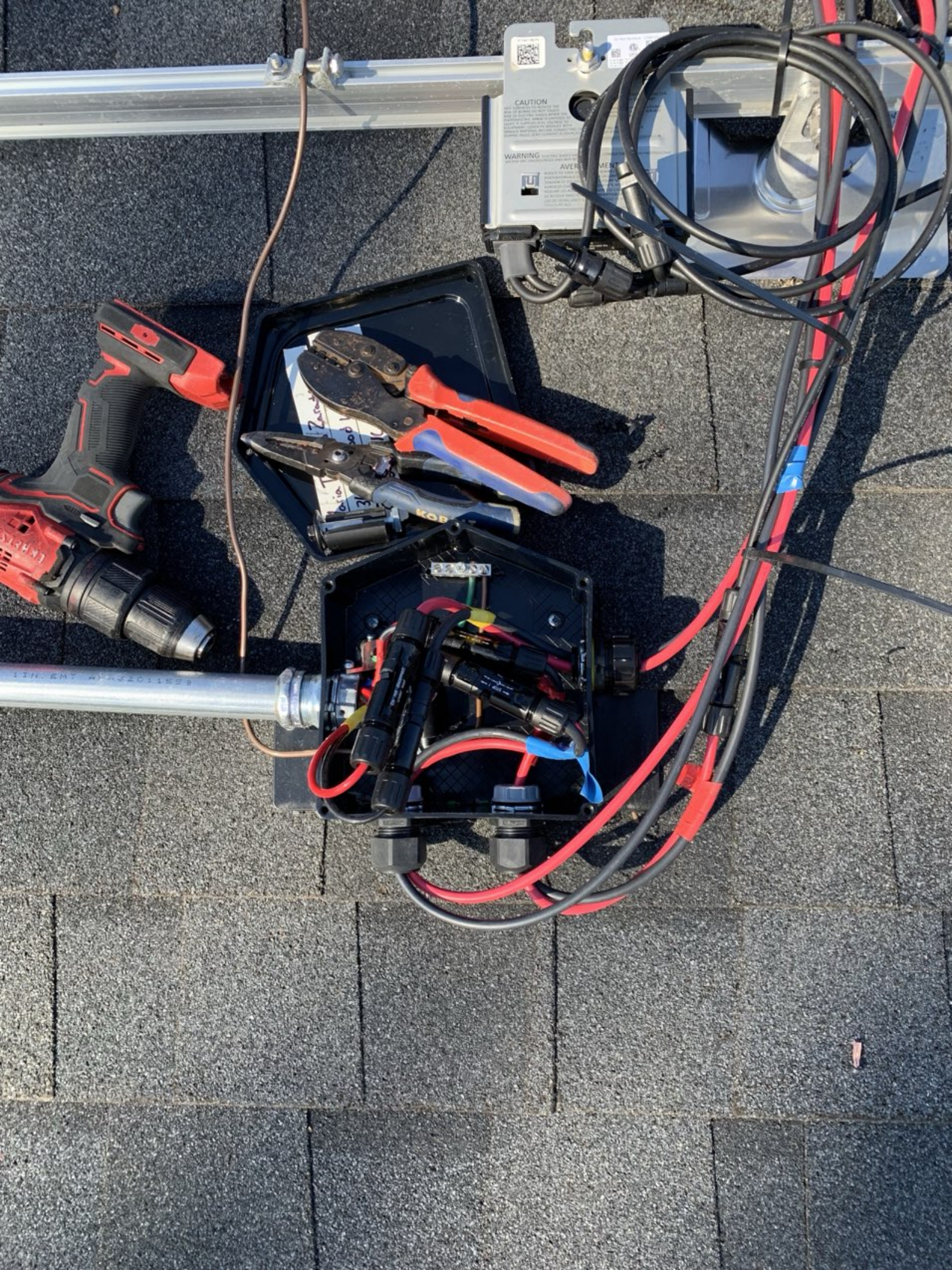
STEVE CHUCKIE







36



CAUTION
WARNING
AVERTISSEMENT



1 1/2 IN. EMT A-42014853

CAUTION

REMOVE THIS COVER ONLY WHEN MAINTENANCE IS INSTALLED IN THE UNIT

Terminal	Label
1	240V
2	240V
3	240V
4	240V
5	240V
6	240V
7	240V
8	240V
9	240V
10	240V
11	240V
12	240V
13	240V
14	240V
15	240V
16	240V
17	240V
18	240V
19	240V
20	240V

Wiring Diagram

Wiring Diagram showing connections between terminals and components. The diagram includes labels for terminals 1 through 20 and various electrical symbols representing components like switches, relays, and power sources.





36

Central Electric Office
 128 Wilson Road
 Sanford, NC 27332
 Phone: (919) 774-4900
 Toll Free: (800) 446-7752



Central Electric

Membership Corporation

A Touchstone Energy Cooperative
 (EYAO 06) EASTON/T - 68160105

Regular Business Hours:
 Monday-Friday
 8:00 a.m. - 5:00 p.m.
www.cemcpower.com

Empowering members to a brighter energy future

Account Name FLORES ZARATE MARIA T
Service Address 36 STONE WOOD LANE
Location 16815570

Billing Date 11/13/23
Account Number 103707-001
Meter Number 165691696

Previous Bill

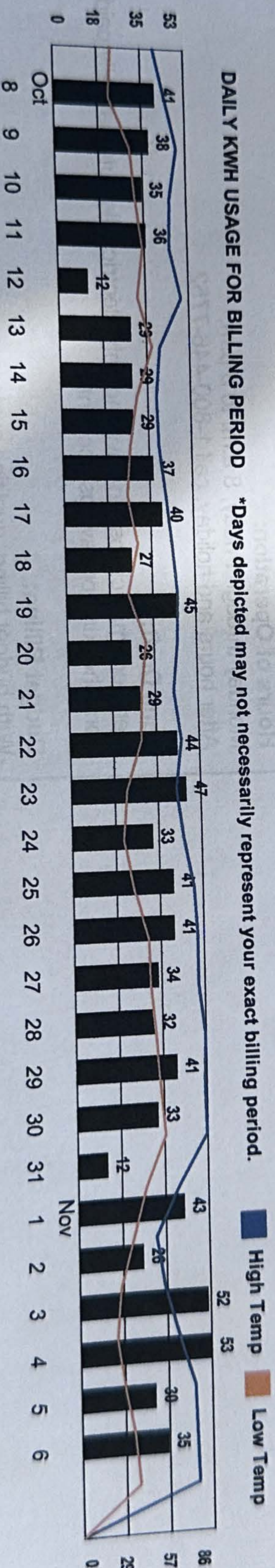
Your previous balance was **\$95.00**
 Your payment was received on 11/07/23 **-\$95.00**

Current Bill

Your current charges for this billing period is **\$76.46**
 Your current charges are due by **12/08/23**
 For full detail breakdown of charges, see the reverse side. →

Total Amount Due

Your total amount due is **\$77.00**



Message Center
 Central Electric is a not-for-profit electric cooperative owned by the people it serves. As a hometown utility, Central is committed to providing reliable, affordable energy to more than 22,000 homes and businesses in five North Carolina counties, including Chatham, Harnett, Lee, Moore and Randolph counties.

Central Electric is one of 749 Touchstone Energy cooperatives across 46 states. Touchstone Energy cooperatives provide electric service to approximately 32 million member-owners.

Retain this copy for your records.

NC00580F

CENTRAL ELECTRIC MEMBERSHIP CORPORATION
 PO BOX 1107 • 128 WILSON ROAD
 SANFORD NC 27331-1107

Account Number 103707-001
Due Date 12/08/23
Amount Due \$77.00

Amount Enclosed: _____

*****AUTO**5-DIGIT 27330



FLORES ZARATE MARIA T
 36 STONE WOOD LN
 SANFORD NC 27332-1224

3
 714

CENTRAL EMC
 SEDC
 PO BOX 530812
 ATLANTA GA 30353-0812



01060 00103707001 & 0000000000 000007700 000007700 &



CAUTION
SOLAR POINT OF CONNECTION

FOCUS AXFR10
PANEL 25.500 AMP IN 100% EFFICIENCY
CENTRAL EMC
355 891 008

CAUTION SOLAR ELECTRIC SYSTEM CONNECTED

WARNING
DUAL POWER SUPPLY
SOURCES: UTILITY GRID AND PV SOLAR ELECTRIC SYSTEM

EATON

RAPID SHUTDOWN SWITCH FOR SOLAR PV SYSTEM

WARNING
ELECTRIC SHOCK HAZARD
TERMINALS ON THE LINE AND LOAD SIDES MAY BE ENERGIZED IN THE OPEN POSITION

AC DISCONNECT
PHOTOVOLTAGIC SYSTEM POWER SOURCE

RATED AC VOLTAGE 240V AC
OUTPUT CURRENT 100A
NOMINAL OPERATING AC VOLTAGE 240V

WARNING
THIS EQUIPMENT FED BY MULTIPLE SOURCES. TOTAL RATING OF ALL OVERCURRENT DEVICES, EXCLUDING MAIN SUPPLY OVERCURRENT DEVICE, SHALL NOT EXCEED CAPACITY OF BUSBAR.

SOLAR PV SYSTEM EQUIPPED WITH RAPID SHUTDOWN

TURN RAPID SHUTDOWN SWITCH TO THE "OFF" POSITION TO SHUT DOWN PV SYSTEM AND REDUCE SHOCK HAZARD IN THE ARRAY

solar edge **HD wave**

WARNING
MAXIMUM VOLTAGE 600V AC
MAXIMUM CIRCUIT CURRENT 40A

solar edge

Charter Spectrum

Amphenol

PHOTOVOLTAIC POWER SOURCE

PHOTOVOLTAIC POWER SOURCE



