



MISSION SOLAR ENERGY  Serial No. **M230509-A1355**

Model Number	MBE366X9R
Rated Maximum Power	[W] 96 (-0/+5%)
Open - Circuit Voltage	[V] 48.2
Voltage at Pmax	[V] 37.0
Short - Circuit Current	[A] 11.24
Current at Pmax	[A] 10.88
Max. System Voltage	[V] 1000
Max. Series overcurrent protective device (where required) fuse rating	[A] 20
Standard test condition	AM=1.5 E=1000W/m ² Tc=25°C

For field connections, use Cu only, 12AWG (US, CANADA), 4mm² (EU, Asia) wires insulated for a minimum of 90°C, rated for wet conditions and resistant to ultra violet radiation (where exposed). See installation manual for PV connector details and compatibility. Avertissement: Risque de choc électrique. Ce module produit des tensions élevées dans la lumière du soleil. Risque électrique peut choquer, brûler ou de provoquer la mort. Ne pas toucher la borne.

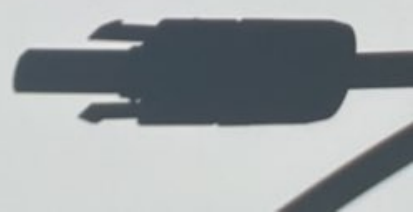
Fire Rating : Type 1
Class of Equipment: Class II
Design Load: Minimum 3600 Pa front and minimum 1600 Pa back load

Warning
PV modules generate voltage even with very weak light. Do not open the junction box. Les modules PV produisent tension même en basse lumière. Ne pas ouvrir la boîte de jonction.





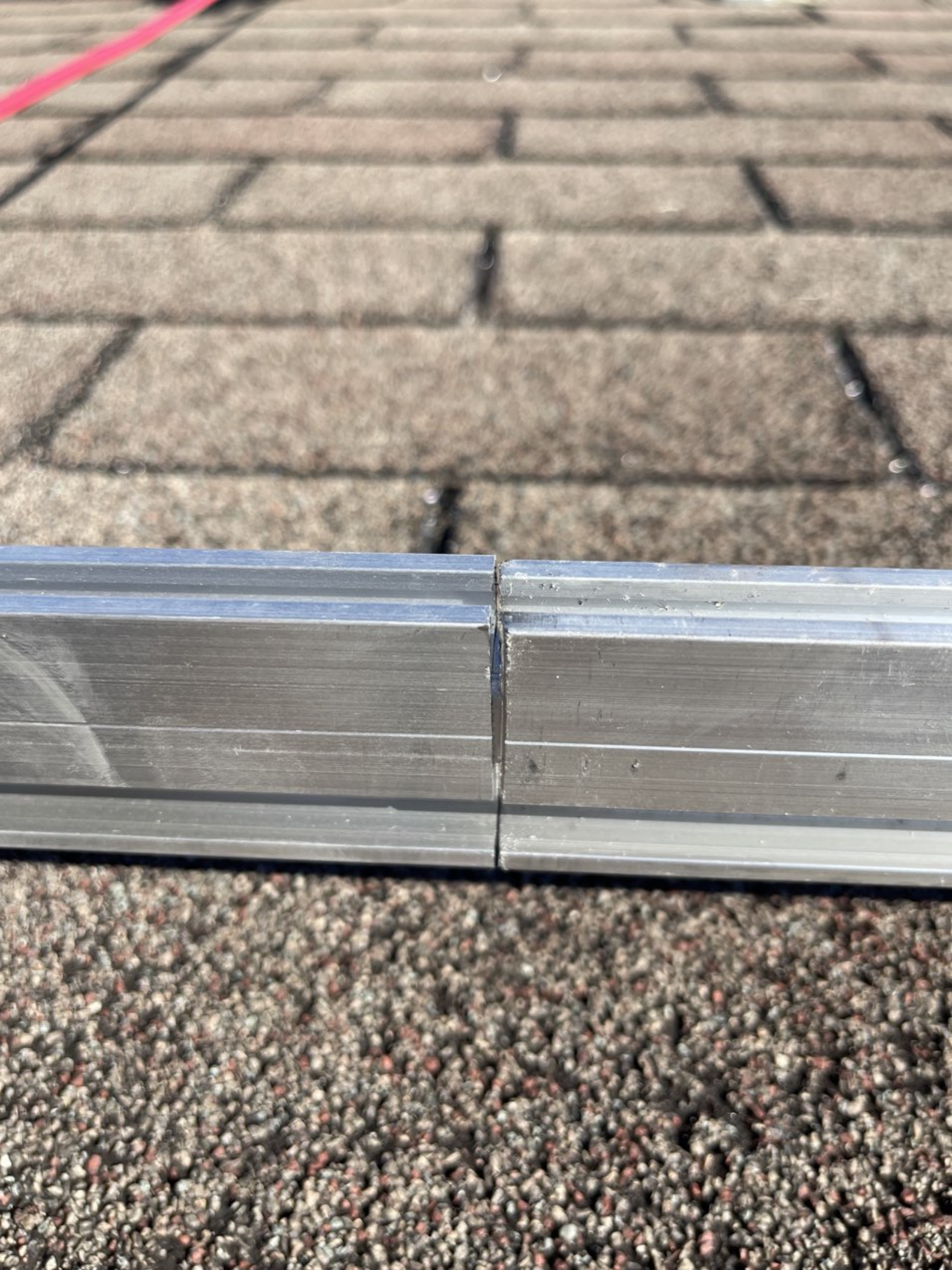

  Address:
8303 S. New Braunfels Ave.
San Antonio, TX 78235
ASSEMBLED IN THE USA



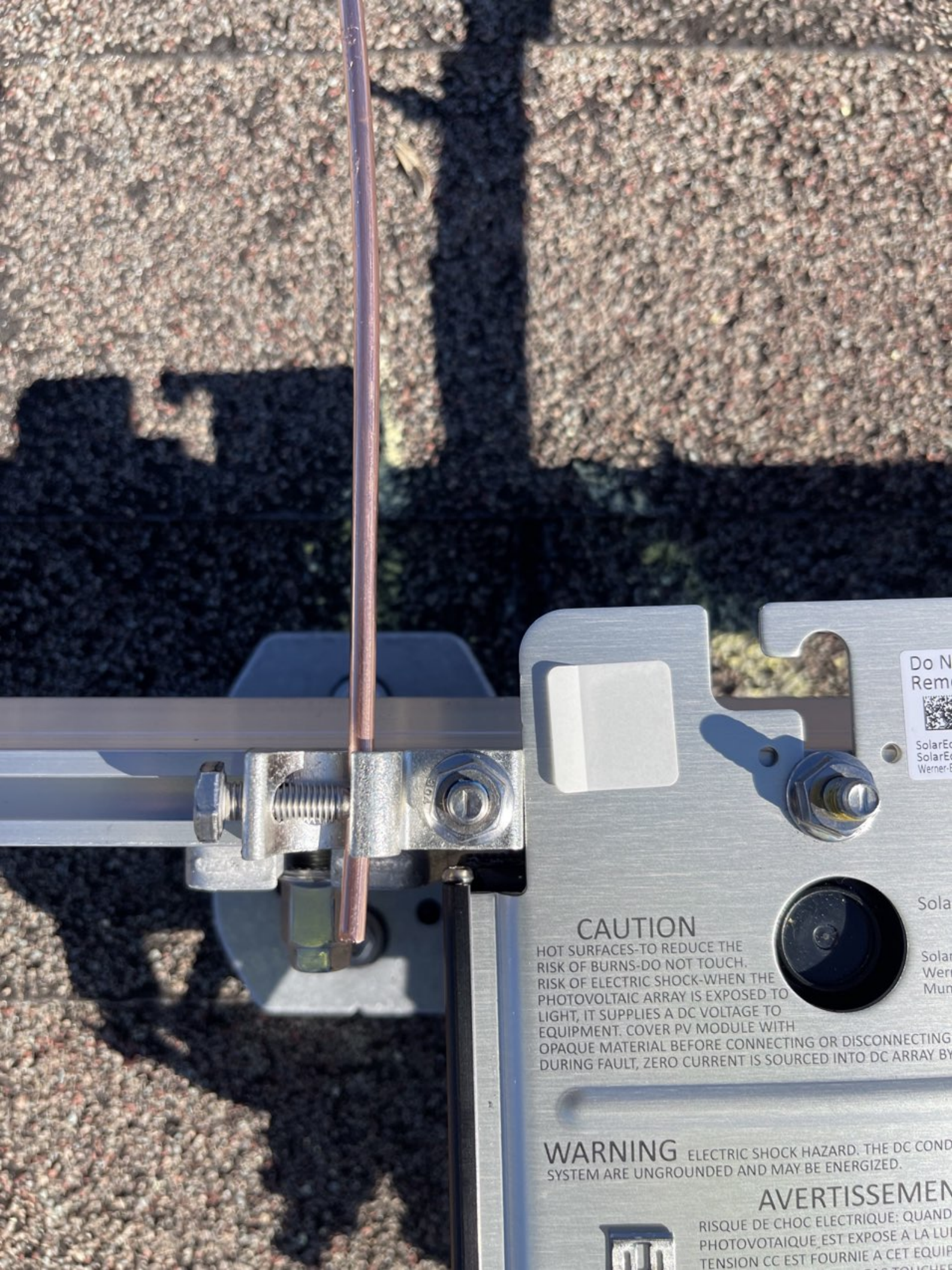












Do Not
Remove
SolarE
SolarE
Werner-

CAUTION
HOT SURFACES-TO REDUCE THE RISK OF BURNS-DO NOT TOUCH. RISK OF ELECTRIC SHOCK-WHEN THE PHOTOVOLTAIC ARRAY IS EXPOSED TO LIGHT, IT SUPPLIES A DC VOLTAGE TO EQUIPMENT. COVER PV MODULE WITH OPAQUE MATERIAL BEFORE CONNECTING OR DISCONNECTING. DURING FAULT, ZERO CURRENT IS SOURCED INTO DC ARRAY BY

WARNING ELECTRIC SHOCK HAZARD. THE DC CONDUCTIVE SYSTEM ARE UNGROUNDED AND MAY BE ENERGIZED.

AVERTISSEMENT
RISQUE DE CHOC ELECTRIQUE: QUAND LE PHOTOVOLTAIQUE EST EXPOSE A LA LUMIERE, IL FOURNIT UNE TENSION CC EST FOURNIE A CET EQUIPEMENT. COUVER LE MODULE PV AVEC UN MATERIEU OPAQUE AVANT DE BRANCHER OU DE DEBRANCHER. PENDANT UN DEFAUT, UN COURANT NUL EST ALIMENTE DANS LE SYSTEME DC PAR





 SolarEdge Technologies, Inc.

CAUTION

 KEEP SURFACES TO REMOVE THE

 RISK OF BURNING OR HOT TOUCH.

 RISK OF ELECTRIC SHOCK WHICH MAY

 BE FATAL. THE CABLES ARE SHARPER

 THAN YOU THINK. ALWAYS WEAR

 PROTECTIVE GLOVES TO AVOID CUTS.

 ALWAYS WEAR SAFETY GEAR WHEN

 WORKING ON THE ROOF.

 ALWAYS WEAR SAFETY GEAR WHEN

 WORKING ON THE ROOF.

WARNING ELECTRIC SHOCK HAZARD. THE DC CONDUCTIONS OF THIS PRODUCT AND

 THE SYSTEM ARE UNGROUNDING AND MAY BE ENERGIZED.

AVERTISSEMENT

 RISQUE DE BRULURE OU DE TOUCHES

 CHAUDES. RISQUE DE CHOC ELECTRIQUE

 QUI PEUT ETRE FATAL. LES CABLES

 SONT PLUS TRANCANTS QU'ILS NE

 LE PARAISSENT ETRE. TOUJOURS

 PORTER DES GANTS DE PROTECTION

 POUR EVITER LES ECORCHURES.

 TOUJOURS PORTER DES GANTS DE

 PROTECTION LORS DU TRAVAIL EN

 HAUTEUR.

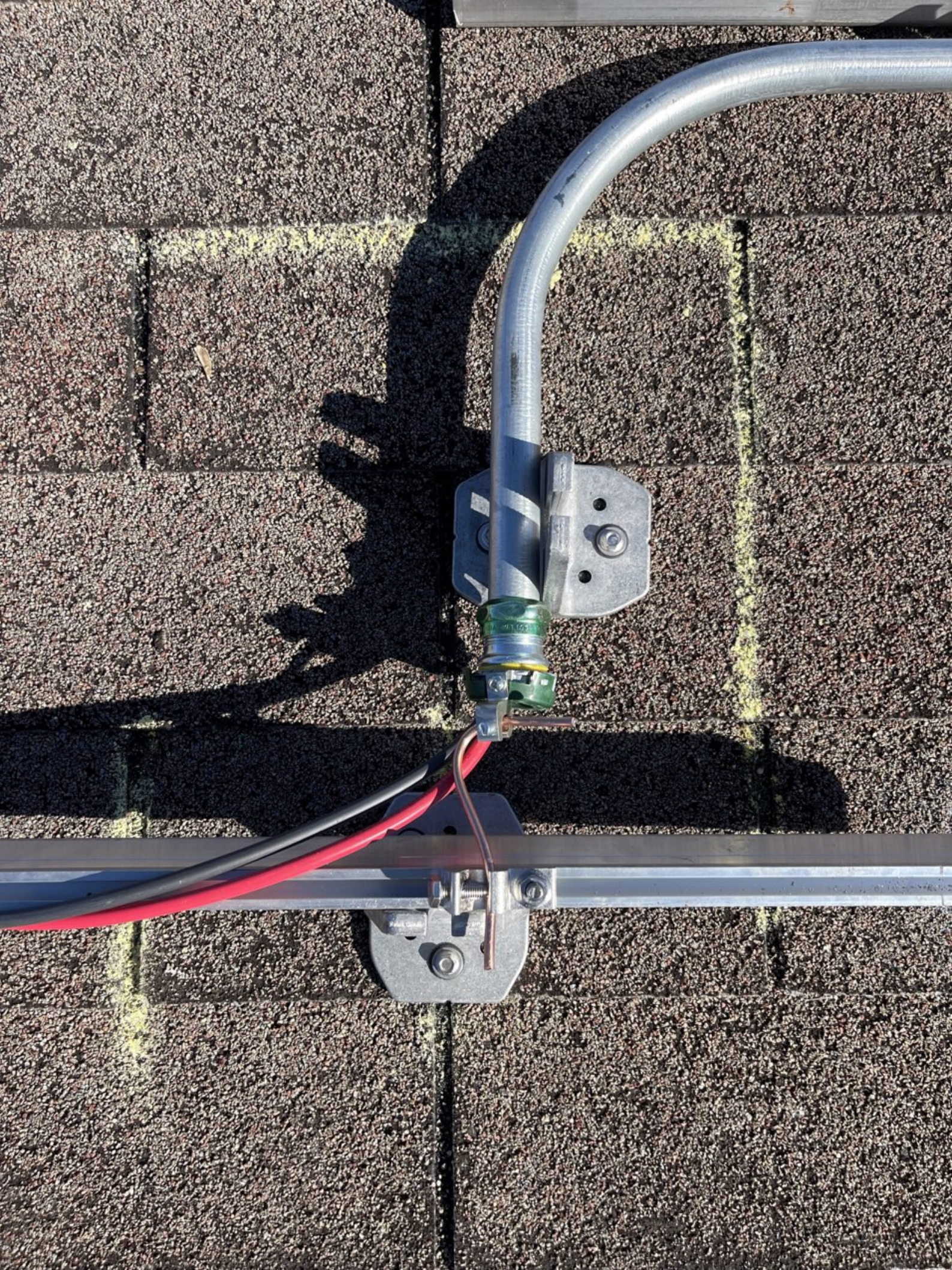
SolarEdge Technologies, Inc.

 Power Optimizer

 SolarEdge Technologies, Inc.

 Power Optimizer

FC













229 Deer View, Sanford, NC 27372

WARNING!

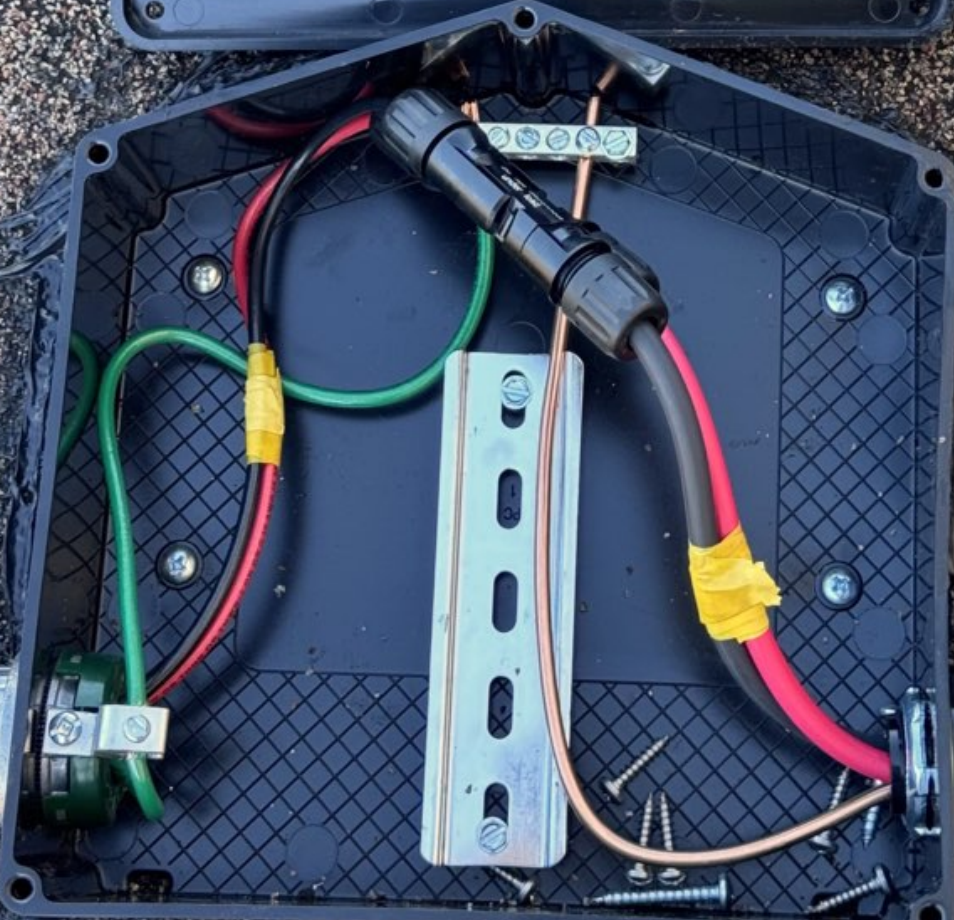
BEWARE OF ELECTRICAL SHOCK, DC OR AC VOLTAGE. WIRING IS CONNECTED INSIDE THIS EQUIPMENT. EACH CIRCUIT MUST BE INDIVIDUALLY DISCONNECTED BEFORE SERVICING AND WHEN THE PHOTOVOLTAIC ARRAY IS EXPOSED TO LIGHT, IT SUPPLIES VOLTAGE TO THIS EQUIPMENT.

- MAX. DC RATINGS — 1000 VDC/20 AMPS
- MAX. AC RATINGS — 480 VAC/20 AMPS
- ALLOWABLE WIRE — #4-#4 AWG
- AMBIENT OPERATING TEMP — -55C - +75C



Intertek
6019942 NEMA 3R

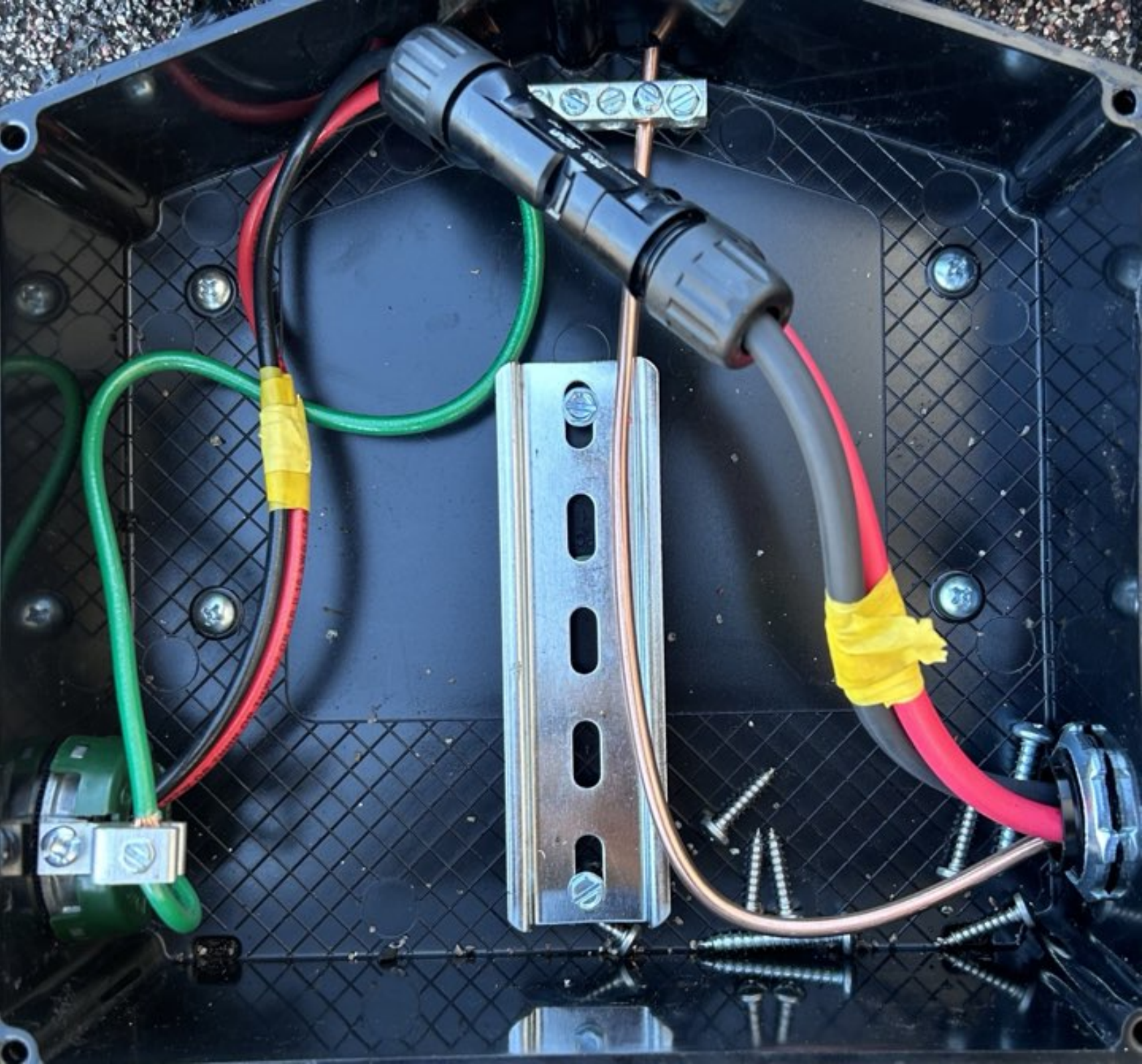
REFER TO INSTALLATION MANUAL
VOLUME 200 FOR DETAILS
TORQUE FOR ALL SCREWS & BOLTS: 15-20 LB-IN
CONFORMS TO IEC STANDARD 1741











PHOTOVOLTAIC POWER SOURCE

solar_{edge} HD wave

PI 0

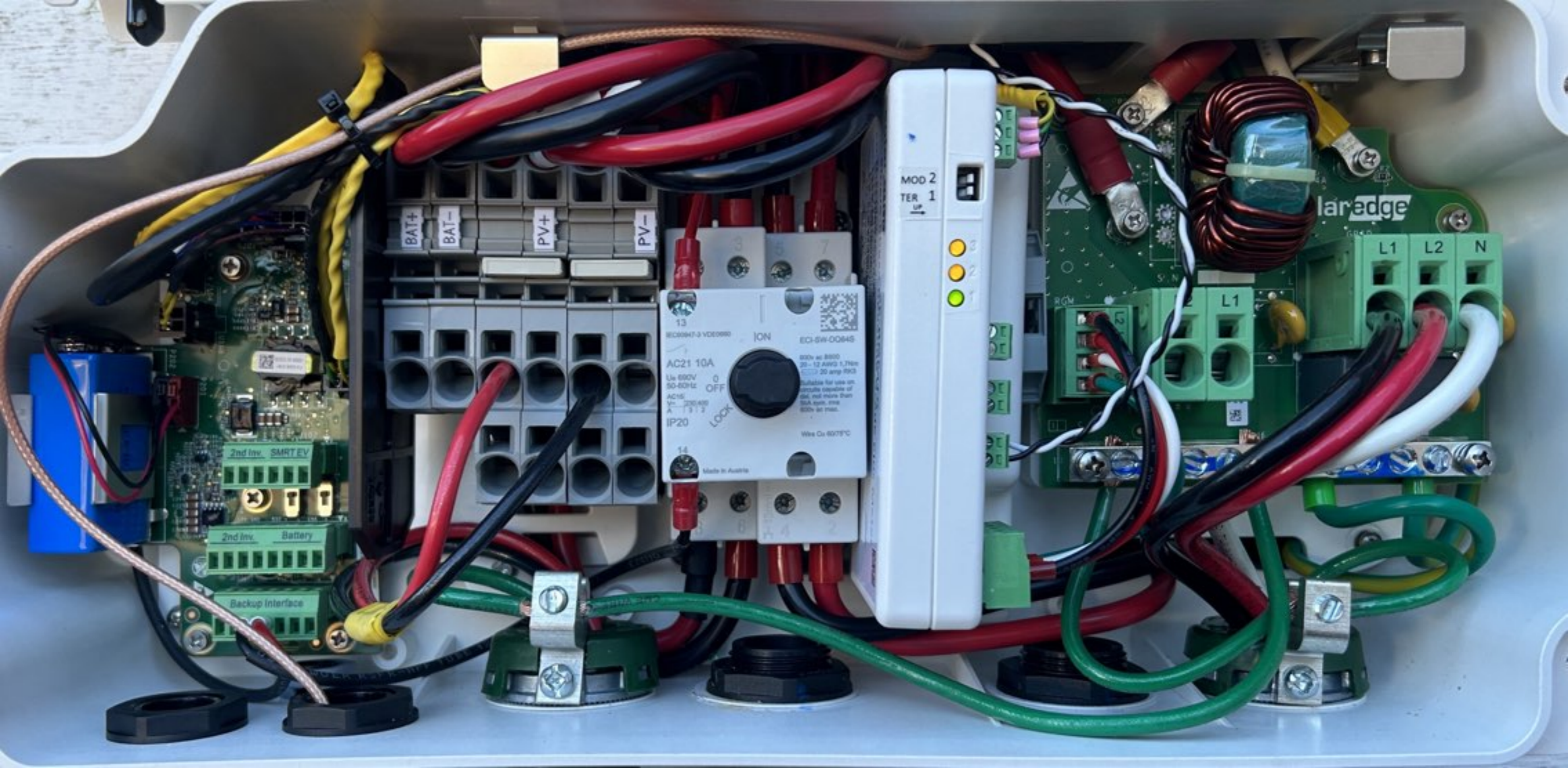
ON

OFF

DC DISCONNECT

solar_{edge}





EATON®

General Duty Safety Switch
Interrupteur de sécurité à usage général
Interruptor de seguridad de servicio general
60 A, 240 V~, 60 Hz

Complete ratings inside
Valeurs nominales complètes à l'intérieur
Información completa de capacidades en el interior

Further instructions inside
Autres instructions à l'intérieur
Instrucciones adicionales en el interior

Made in U.S.A. / Fabriqué aux É.-U. / Hecho en E.U.A.

⚠ DANGER
HAZARDOUS VOLTAGE. WILL CAUSE SEVERE INJURY OR DEATH.

- Never operate switch with cover open.
- Turn OFF power ahead of switch before doing any work inside. Replace all parts. Close cover before turning power ON.

TENSION DANGEREUSE. PEUT CAUSER DES BLESSURES GRAVES OU LA MORT.

- Ne jamais manœuvrer l'interrupteur lorsque le couvercle est ouvert.
- Couper l'alimentation en amont de l'interrupteur avant toute intervention. Remplacer les pièces. Fermer le couvercle avant de remettre sous tension.

⚠ PELIGRO
VOLTAJE PELIGROSO. PUEDE CAUSAR HERIDAS SEVERAS O LA MUERTE.

- Nunca opere el interruptor con la cubierta abierta.
- Desconecte la alimentación del interruptor antes de trabajar dentro del mismo. Reemplazar todas las partes. Cerrar la cubierta antes de energizar el interruptor.

30-43080



AC DISCONNECT
PHOTOVOLTAIC SYSTEM
POWER SOURCE

RATED AC OUTPUT CURRENT **25** AMPS

NOMINAL OPERATING AC VOLTAGE **240** VOLTS

pvlabels.com 03-306

⚠ WARNING
ELECTRIC SHOCK HAZARD

TERMINALS ON THE LINE AND LOAD SIDES MAY BE ENERGIZED IN THE OPEN POSITION

pvlabels.com 05-215

SOLAR PV SYSTEM
EQUIPPED WITH
RAPID SHUTDOWN

SOLAR ELECTRIC PV PANELS

TURN RAPID SHUTDOWN SWITCH TO THE "OFF" POSITION TO SHUT DOWN PV SYSTEM AND REDUCE SHOCK HAZARD IN THE ARRAY

pvlabels.com 05-112

RAPID SHUTDOWN
SWITCH FOR
SOLAR PV SYSTEM

03-316

ON

OFF





31 32 33 34 35 36 37 38 39 40









2 3 4 5 6 7 8 9 10 11 12 13 14 15 16 17 18 19 20 21 22 23 24 25 26 27 28 29 30 31 32 33 34 35 36 37 38 39 40 41

Type FOCUS AXRe-SD
FORM 2S CL200 240V 3W 60Hz TA=30 Kh 7.2

CENTRAL EMC

160 189 434

134 100 000 00 00 00 00 00 00 00 00
Lands+Oyr

WARNING
DUAL POWER SUPPLY
SOURCES: UTILITY GRID
AND PV SOLAR
ELECTRIC SYSTEM

WARNING
POWER SOURCE
OUTPUT CONNECTION
DO NOT RELOCATE THIS
OVERCURRENT DEVICE

CAUTION:
MULTIPLE SOURCES OF POWER
THE PV DISCONNECT IS LOCATED
BESIDE THE SERVICE METER

**RAPID SHUTDOWN
SWITCH FOR
SOLAR PV SYSTEM**

SOLAR PV BREAKER
BREAKER IS BACKFED
DO NOT RELOCATE

35A OFF

100DL21200
20 AMP
20A BREAKER
Circuit Breaker
OFF

Handwritten text: *Mont*
Panel



solaredge SE6000H - US
**Grid Support Utility Interactive
Non-Isolated Photovoltaic Inverter**

Operating Voltage Range 270 - 480Vdc
Max Input Current 16.5Adc
Max Continuous Output Power 5000Wac @ 208V 6000Wac @ 240V
Voltage Min - Nom - Max 183 - 208 - 229Vac
Max Continuous Output Current 211 - 240 - 264Vac
Max Output Fault Current 24Aac @ 208V 25Aac @ 240V
Max Utility Backfeed Current 72Aac
Frequency Min - Nom - Max 0Aac
Output Power Factor 59.3 - 60.0 - 60.5Hz
Max Ambient Temperature +/- 0.85 - 1
Enclosure 60 C
With integrated ground fault protection per NEC 690.35 (C)
Type 1 Photovoltaic Arc-Fault Circuit-Protection

WI - FI Password: f7LPo9d4
Activation: hMj7 cGNT un3Z E+2s Ds8z cHUP mmE=

WiFi MAC:
84:D6:C5:81:09:8E
ZigBee MAC:



PN: SE6000H - USSNBBL14
SN: SV3423 - 0750B1D4D - EA



solaredge



PHOTOVOLTAIC RAPID
SHUTDOWN SYSTEM

