

CIRCUIT 1
CIR

CIRCUIT 2
CIRC

WARNING
DUAL POWER SUPPLY
SOURCES: UTILITY GRID
AND PV SOLAR
ELECTRIC SYSTEM

CAUTION:
MULTIPLE SOURCES OF POWER
THE PV DISCONNECT IS LOCATED
BESIDE THE SERVICE METER



Type 1 Indoor Enclosure

Front Cat. No. TM16GC

Use with OE Load Center Enclosure Cat. No. TM1620CCU

MAIN RATING: 120/240VAC, 1-Phase, 3-Wire, 200 Amp Maximum

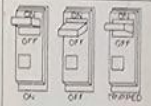
Use only GE type breakers: THQP, THQP, THQL, THQL, TQDL, THGL, or TXGL

WARNING: Use only with GE type breakers, use of other circuit breakers voids the warranty, may void the UL Listing and could result in property loss or personal injury. The circuit breakers in this box have been selected to protect the wiring. To avoid damage and loss of protection, do not replace with higher ampere rated breakers. If changes are necessary call a qualified electrical contractor.

Equipment ground kits: THK32, TLK30
Subfeed Lug: THLK...
Front seal kit: TFS1 Door lock kit: TDL106

For additional Series Rating Information refer to DET-008

DANGER
Hazard of electrical shock or burn.
Turn off power before working inside this equipment.



IF A BREAKER TRIPS:
1. Move handle to OFF position
2. Move handle to ON position

1	A Don Plugs	Heat	A
	B RANGE		B
3	A RANGE	PUMP	A
	B Water		B
5	A Heater	LIGHTS	A
	B Dishwasher	Dryer	B
7	A Kitchen plugs	Dryer	A
	B Bathroom plugs	LIGHTS	B
9	A SHED } B SHED }	M. Bedroom plugs	A
		WASHER	B
11	A	KIT PLUGS	A
	B		B
13	A Whirlpool		A
	B TUB		B
15	A		A
	B		B

- #1 BATH PLUG
- #2 KIT LIGHT
- #3 KIT PLUG
- #4 BATH PLUG

To test each GFCI circuit breaker in this panel ONCE A MONTH:

- With handle (B) in "ON" position, press "PUSH TO TEST" button (A).
- Handle (B) should move to "TRIP" position to indicate GFCI circuit breaker has opened the circuit.
- To restore power, move handle to "OFF" position (to reset mechanism), then to "ON".

IMPORTANT: If handle does not move to "TRIP" position when test button is pressed, the GFCI circuit breaker operation is not operating properly and an electrician should be IMMEDIATELY notified.

GENERAL ELECTRIC
Install GFCI Circuit Breakers on Grounded Power Supply Circuits only
CLASS A

- To minimize false tripping, do not connect to swimming pool equipment installed before adoption of the 1965 National Electrical Code.
- 30 milliamperes ground fault equipment protection circuit breakers (yellow TEST button) are **NOT** intended, and are **NOT** suitable, for ground fault protection of personnel coming in contact with electrical parts. Use 5 milliamperes GFCI circuit breakers for this application.
- 5 milliamperes GFCI circuit breakers (red TEST button) and 30 milliamperes ground fault equipment protection circuit breakers (yellow TEST button) are intended for use on 120VAC circuits (1-pole circuit breaker) or 120/240 or 208Y/120VAC (2-pole circuit breaker), 60 Hz circuits only.

GE Industrial Systems
General Electric Company
12000 North 17th Street, Columbus, GA 31906
© 1987 GE Corp. All Rights Reserved.

#3
#4

PUSH TO TEST

MAIN



MAIN



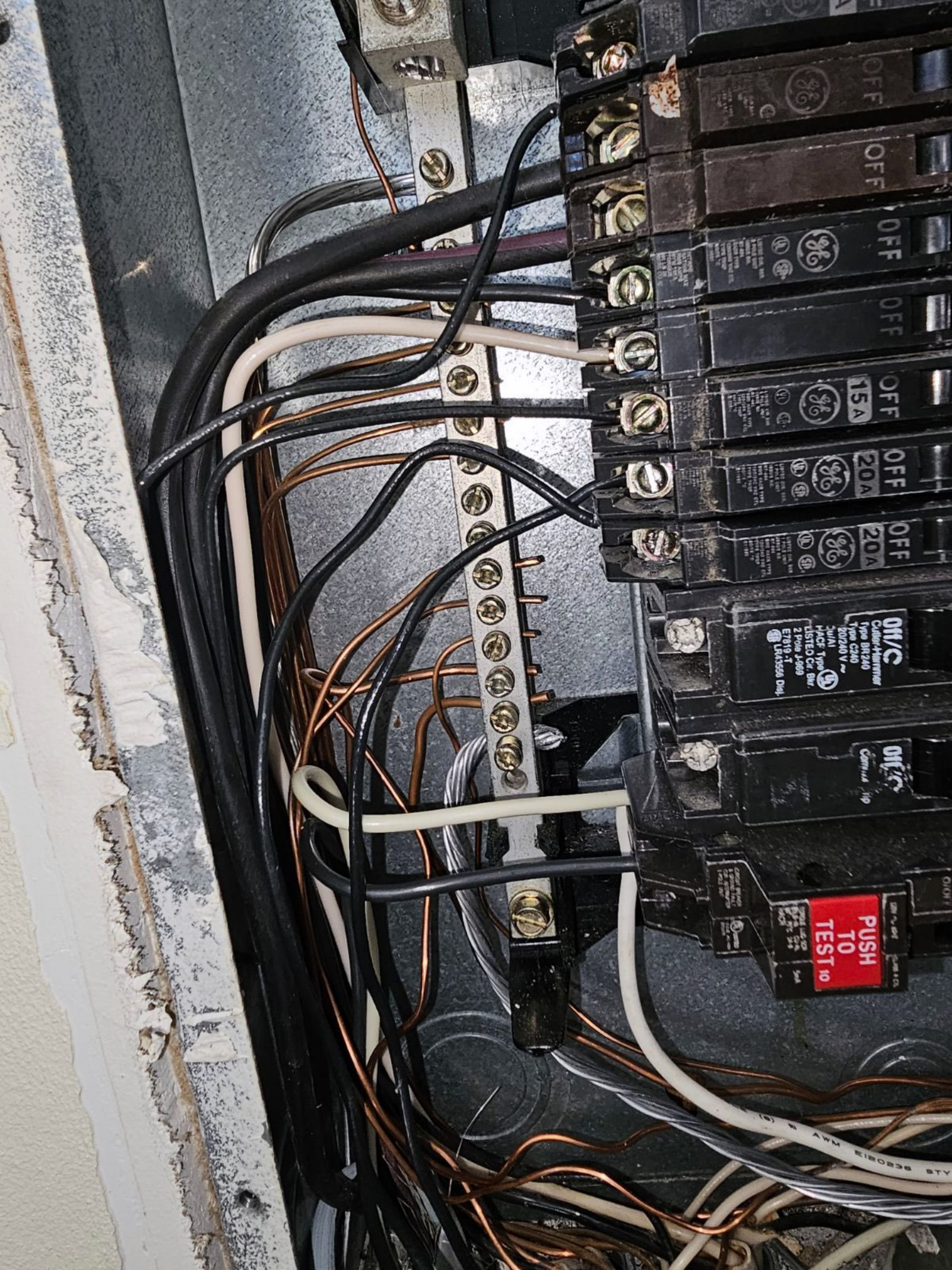
#3

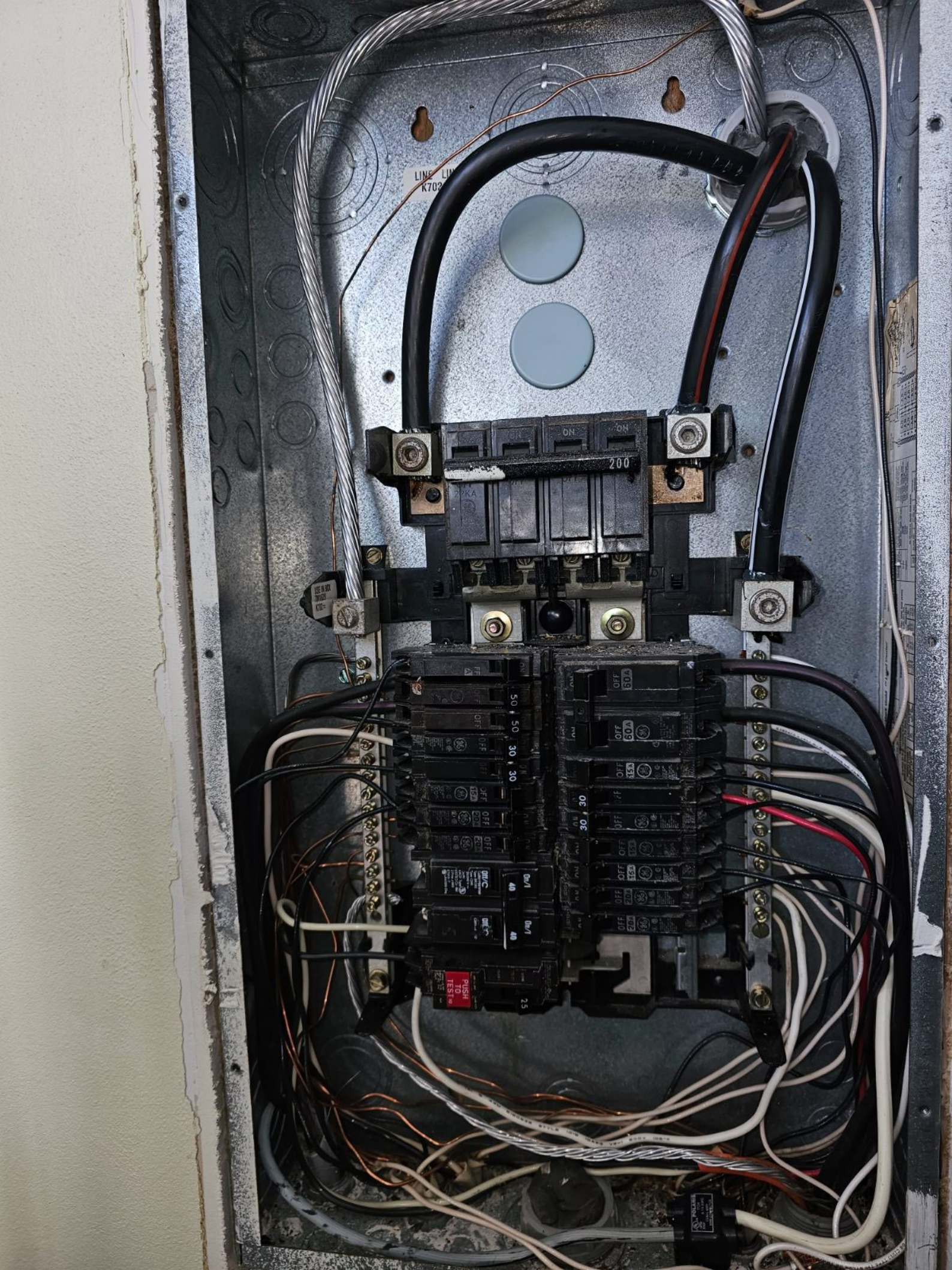
#4

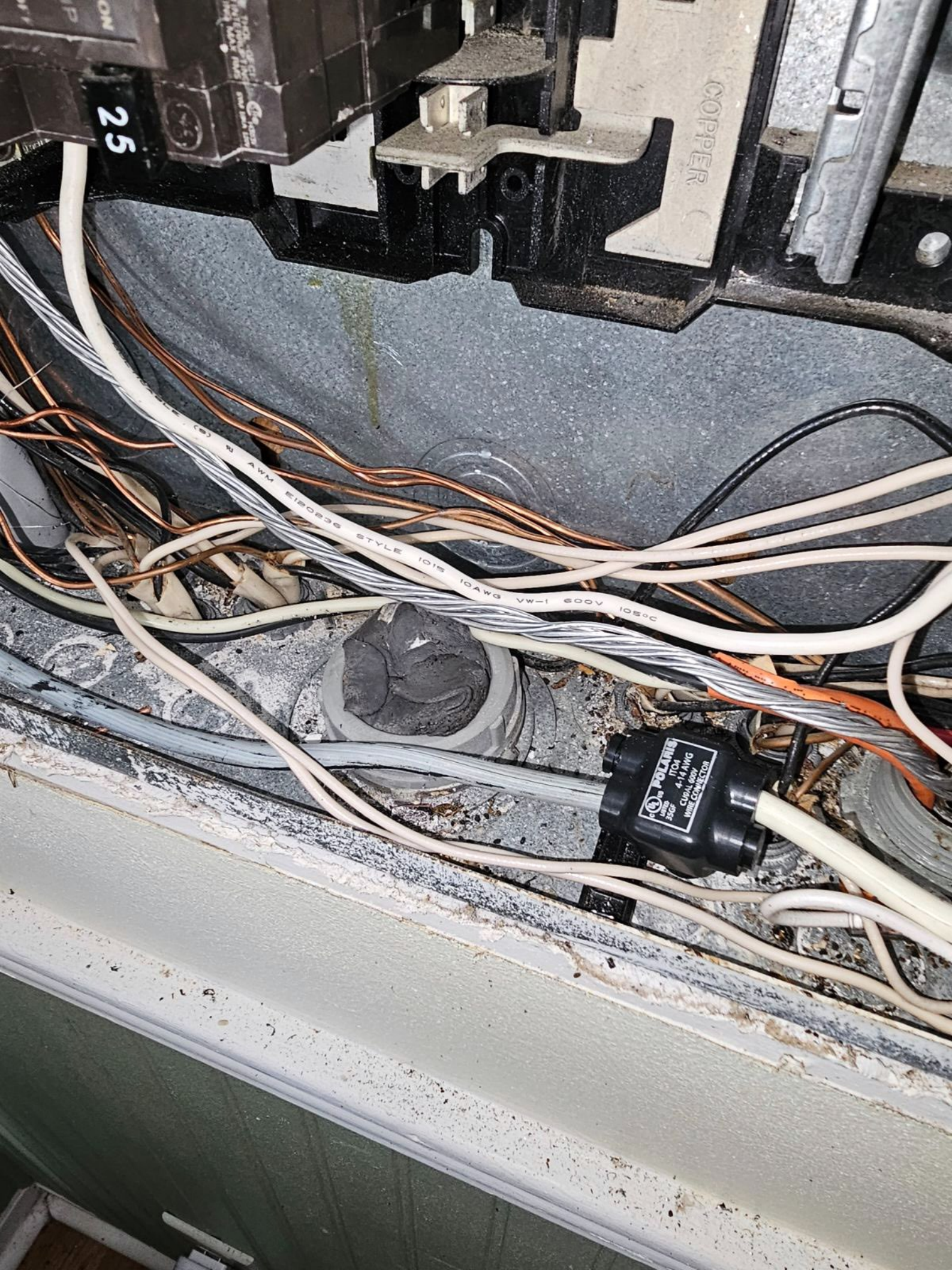
#1

#2

in this panel ONCE A
 action, press "PUSH TO
 to "TRIP" position to
 to "OFF" position to
 does not move to "TRIP"
 (press the "PUSH TO
 depending on the panel
 IMMEDIATELY notify
 ELECTRIC
 breakers
 Supply
 not allowed to swimming
 adoption of the 1992
 equipment protection (GFCI
) are **NOT** provided, and
 fault protection of personnel
 al parts. Use 5 millimeter
 application.
 breakers (red TEST button
 factors) are provided for use
 circuit breakers or 120VAC or
 breaker) 50 for circuits only.







25

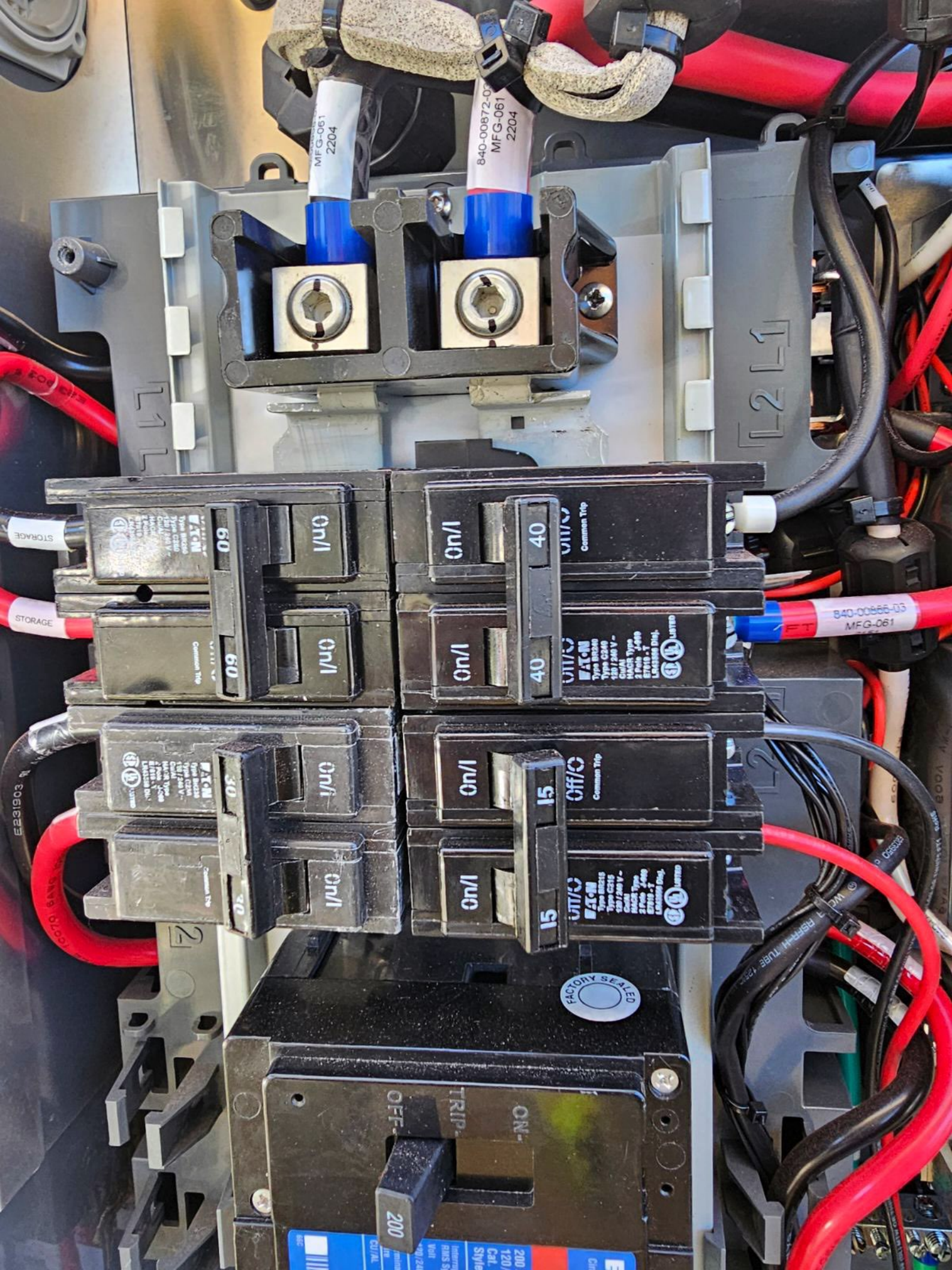
COPPER

AWM E120236 STYLE 1015 10AWG VW-1 600V 105°C

POLARIS
4-14 AWG
CLIP ON
WIRE CONNECTOR
350°F







MFG-061
2204

840-00872-00
MFG-061
2204

STORAGE

STORAGE

E231903

10070 6 24V 9 1000

840-00866-05
MFG-061

FACTORY SEALED

200

OFF

TRIP

ON

60

1/0/1

1/0/1

40

60

1/0/1

1/0/1

40

30

1/0/1

1/0/1

15

30

1/0/1

1/0/1

15

2

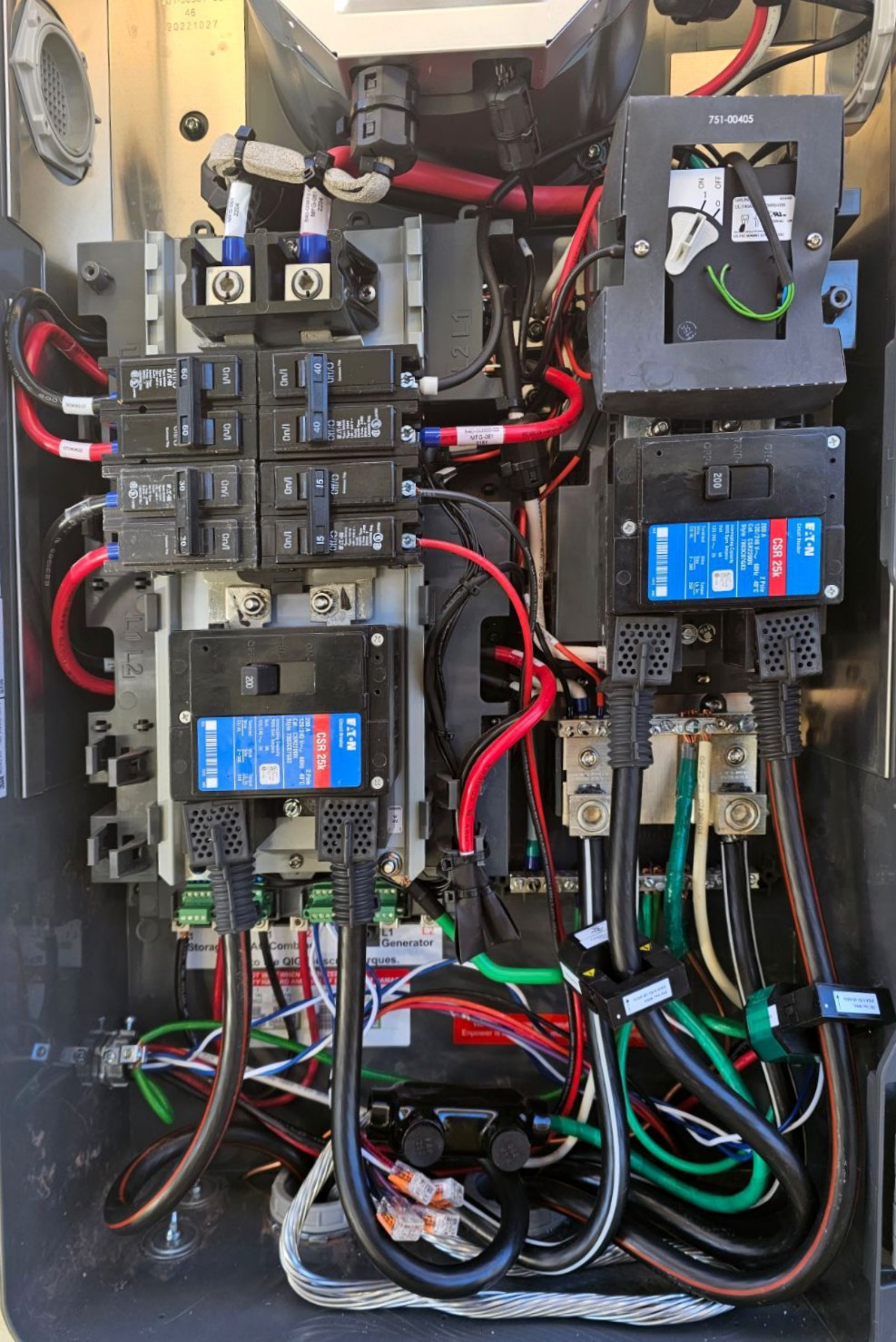
L211

L2

123

200 120 120 Cal. Style
RMS 51
10/240
FACTORY
E

46
20221027



751-00405

60 On/Off
60 On/Off
30 On/Off
30 On/Off

EATON
CSR 25k
250 A
125/140 VAC
50/60 Hz
3 Pole
Type 2
UL 489
CSA 25.1
UL 1008
CSA 1008

EATON
CSR 25k
250 A
125/140 VAC
50/60 Hz
3 Pole
Type 2
UL 489
CSA 25.1
UL 1008
CSA 1008

L1 Generator
L2
L3

Storage
All Control
to the QIC
Generator
Arques.



250 Vac MAX.
200A 0.5V 45-66Hz

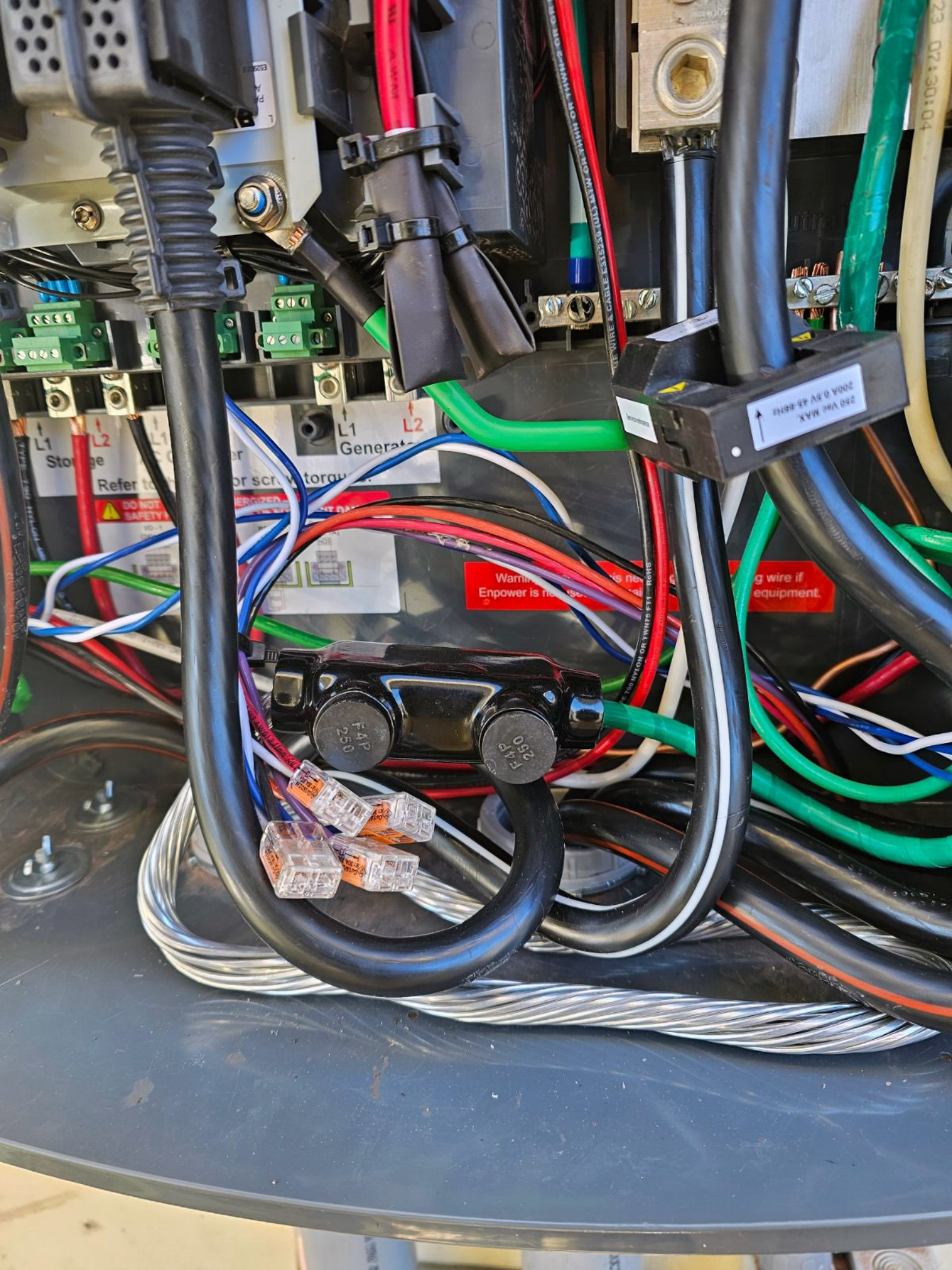
...ding wire if
...nce equipment.

07130104

4441000001 03

Neutral





L1 Storage

L2 Generator

250 VAC MAX
200A @ 8V @ 45 68Hz

Warning: Energized equipment

FAP 250

FAP 250

250V RJ45
250V RJ45
250V RJ45
250V RJ45

23 02130104





4 bags of 18
NU-013/1

3. Inside the Enpower, turn ON the breakers for the PV-AC Combiner, Encharge storage, Generator and NFT.
The Enpower system is no longer manually overridden; the system is fully functional.



Do not remove unless directed by Enphase customer support

STORAGE

NFT

Panel of circuit breakers for STORAGE and NFT sections. Each section contains two rows of breakers with handles in the 'ON' position. The breakers are labeled with ratings such as 60, 30, and 51.

MAIN SERVICE DISCO

Panel of circuit breakers for MAIN SERVICE DISCO. It features a single large breaker with a handle in the 'ON' position. The breaker is labeled 'Eaton CSR 25k' and includes technical specifications.

AC COMBINER

ENVOY

SUB PANEL DISCO

Panel of circuit breakers for SUB PANEL DISCO. It features a single large breaker with a handle in the 'ON' position. The breaker is labeled 'Eaton CSR 25k' and includes technical specifications.

BACKUP LOADS

SHORT CIRCUIT CURRENT RATING: WHEN PROTECTED BY EATON TYPE CSR CIRCUIT BREAKER RATED NOT MORE THAN 200 AMPERE, THIS EQUIPMENT IS SUITABLE FOR USE ON A CIRCUIT CAPABLE OF DELIVERING NOT MORE THAN 22,000KA RMS SYMMETRICAL MAXIMUM, 240 VOLTS MAXIMUM.

⚠ WARNING
RISK OF ELECTRIC SHOCK
TERMINALS ON THE LINE AND LOAD SIDES MAY BE ENERGISED WHEN CIRCUIT BREAKERS ARE IN THE OPEN POSITION.
DO NOT REMOVE THE COVER. NO USER SERVICEABLE PARTS INSIDE.
REFER SERVICING TO QUALIFIED SERVICE PERSONNEL.

⚠ AVERTISSEMENT
RISQUE D'ÉLECTROCUTION
LES BORNES DU CÔTÉ LIGNE ET DU CÔTÉ CHARGE PEUVENT ÊTRE ALIMENTÉES LORSQUE LES DISJONCTEURS SONT EN POSITION OUVERTE.
NE PAS RETIRER LE CAPOT. AUCUNE PIÈCE RÉPARABLE PAR L'UTILISATEUR À L'INTÉRIEUR. POUR TOUT DÉPANNAGE, SE REPORTER AU PERSONNEL QUALIFIÉ.





Manual Override Instructions:

▲ Before following the below instructions, contact Enphase customer support at 877-793-4743.

To initiate manual override (Grid tied operation only):

1. Put the remote rapid shutdown switch to the OFF position.
2. Inside the Enpower: turn OFF the breakers for the PV AC Combiner, Exchange storage, Generator and NFT.
3. Remove the sticker and cover for the manual override toggle switch in Enpower. Turn the manual override toggle switch to the LEFT.
4. The Enpower system is now in manual override. Loads will only operate with utility grid power.

To exit manual override (Grid interactive and backup operation):

1. Put the remote rapid shutdown switch to the ON position.
2. Turn the manual override toggle switch to the RIGHT. (Reinstall the cover and sticker if available).
3. Inside the Enpower: turn ON the breakers for the PV AC Combiner, Exchange storage, Generator and NFT.

The Enpower system is no longer manually overridden, the system is fully functional.

Do not remove unless directed by Enphase customer support

STORAGE NFT

AC COMBINER ENVOY

SUB PANEL DISCO

BACKUP LOADS

MAIN SERVICE DISCO

SHORT CIRCUIT CURRENT RATING, WHEN PROTECTED BY EATON TYPE CSR CIRCUIT BREAKER RATED NOT MORE THAN 200 AMPERE. THIS EQUIPMENT IS SUITABLE FOR USE ON A CIRCUIT CAPABLE OF DELIVERING NOT MORE THAN 22,000VA RMS SYMMETRICAL MAXIMUM, 240 VOLTS MAXIMUM.

WARNING
 RISK OF ELECTRIC SHOCK
 TERMINALS ON THE LINE AND LOAD SIDES MAY BE ENERGIZED WHEN CIRCUIT BREAKERS ARE IN THE OPEN POSITION.
 DO NOT REMOVE THE COVER. NO USER SERVICEABLE PARTS INSIDE.
 REFER SERVICING TO QUALIFIED SERVICE PERSONNEL.

AVERTISSEMENT
 RISQUE D'ÉLECTROCUTION
 LES BORNES DU CÔTÉ LIGNE ET DU CÔTÉ CHARGE PEUVENT ÊTRE ALIMENTÉES LORSQUE LES DISJONCTEURS SONT EN POSITION OUVERTE.
 NE PAS RETENIR LE CAPOT AUCUNE PIÈCE RÉPARABLE PAR L'UTILISATEUR À L'INTÉRIEUR. POUR TOUT DÉPANNAGE, SE REPORTER AU PERSONNEL QUALIFIÉ.

BATTERY CO

▲ DUAL POWER SOURCES AND ELECTRICAL

3-13003
3-COVER







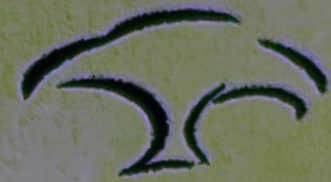
ENPHASE

ENPHASE



come

Harnett County Inspections



Harnett
C O U N T Y
NORTH CAROLINA

Address 373 Chinaberry

Angier

Inspector [Signature]

Temp Pole

Conditional/Permanent Power



