

solaredge SE10000H - US
Grid Support Utility Interactive
Non-Isolated Photovoltaic Inverter

Operating Voltage Range	380 - 480Vdc
Max Input Current	27A _{dc}
Max Continuous Output Power	10000W _{ac}
Voltage Min - Nom - Max	211 - 240 - 284V _{ac}
Max Continuous Output Current	42A _{ac}
Max Output Fault Current	55.5A _{ac}
Max Utility Backfeed Current	0A _{ac}
Frequency Min - Nom - Max	59.3 - 60.0 - 60.5Hz
Output Power Factor	±1 - 0.99 - 1
Max Ambient Temperature	40 C
Enclosure	IP65 / Type 3R
With integrated ground fault protection per NEC 500.35 (C)	
Type 1 Photovoltaic Arc-Fault Circuit-Protection	
COMPLIES WITH SUPPLEMENTAL INTERCONNECTION REQUIREMENTS	
WiFi - FI Password: rSANT4n9	
Activation: 8vCQ JZ23 1wUI 5FDn 00AN TgND HmM -	

WiFi MAC:
84:D6:C5:4B:21:59
ZigBee MAC:



PN: SE10000H - US000BE14
SN: SV1923 - 0750280F0 - E7

solaredge 
PHOTOVOLTAIC RAPID
SHUTDOWN SYSTEM

solaredge

DC Safety Switch



AS3014-D24-3

Max DC to Voltage: 500 Vdc
Max DC Current: 30.5 Adc
Ambient Temperature: -40°C to +60°C
Enclosure NEMA Rating: Type 3R
PHOTOVOLTAIC RAPID SHUTDOWN SYSTEM
Revenue Grade ANSI C12.20
Use No. 16-6AWG, 75°C-90°C copper wires only.
WARNING - Hot Surface
ATTENTION - Surface chaude



Intertek
4004390

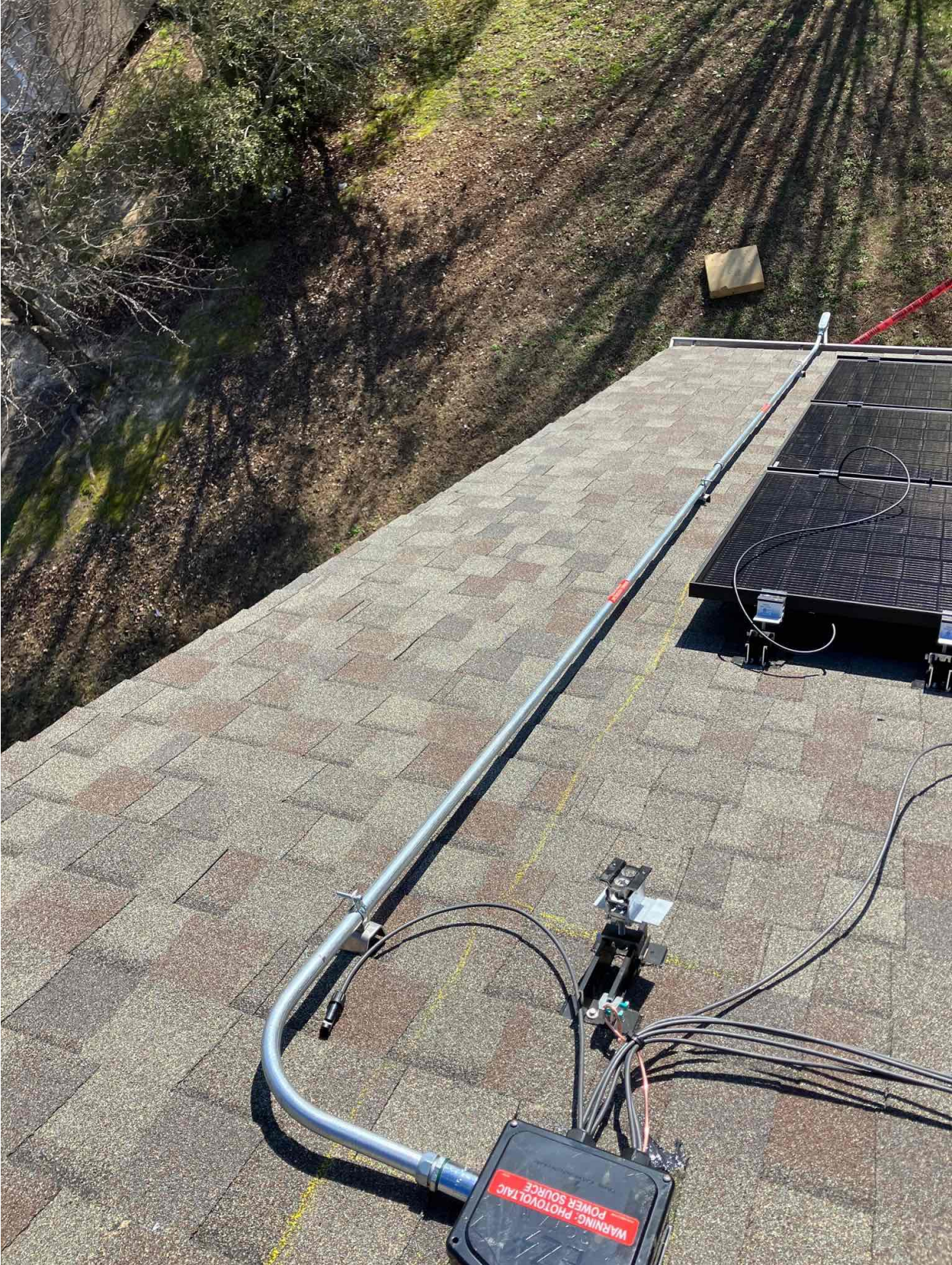
DCD-1PH-US-S2H-F-1

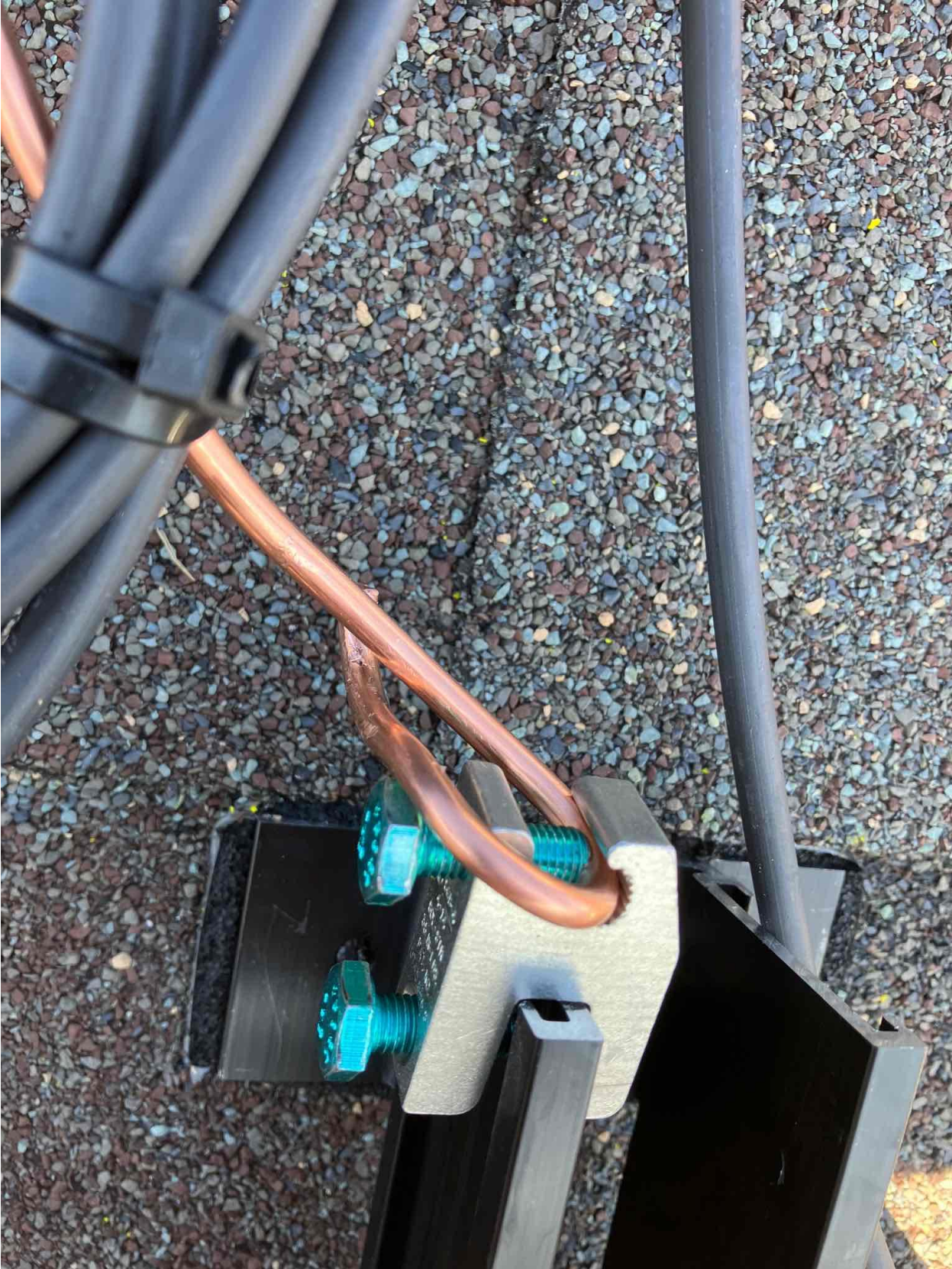
PN:

SV1923-11990F2B3-4E

SN:

Made in Vietnam

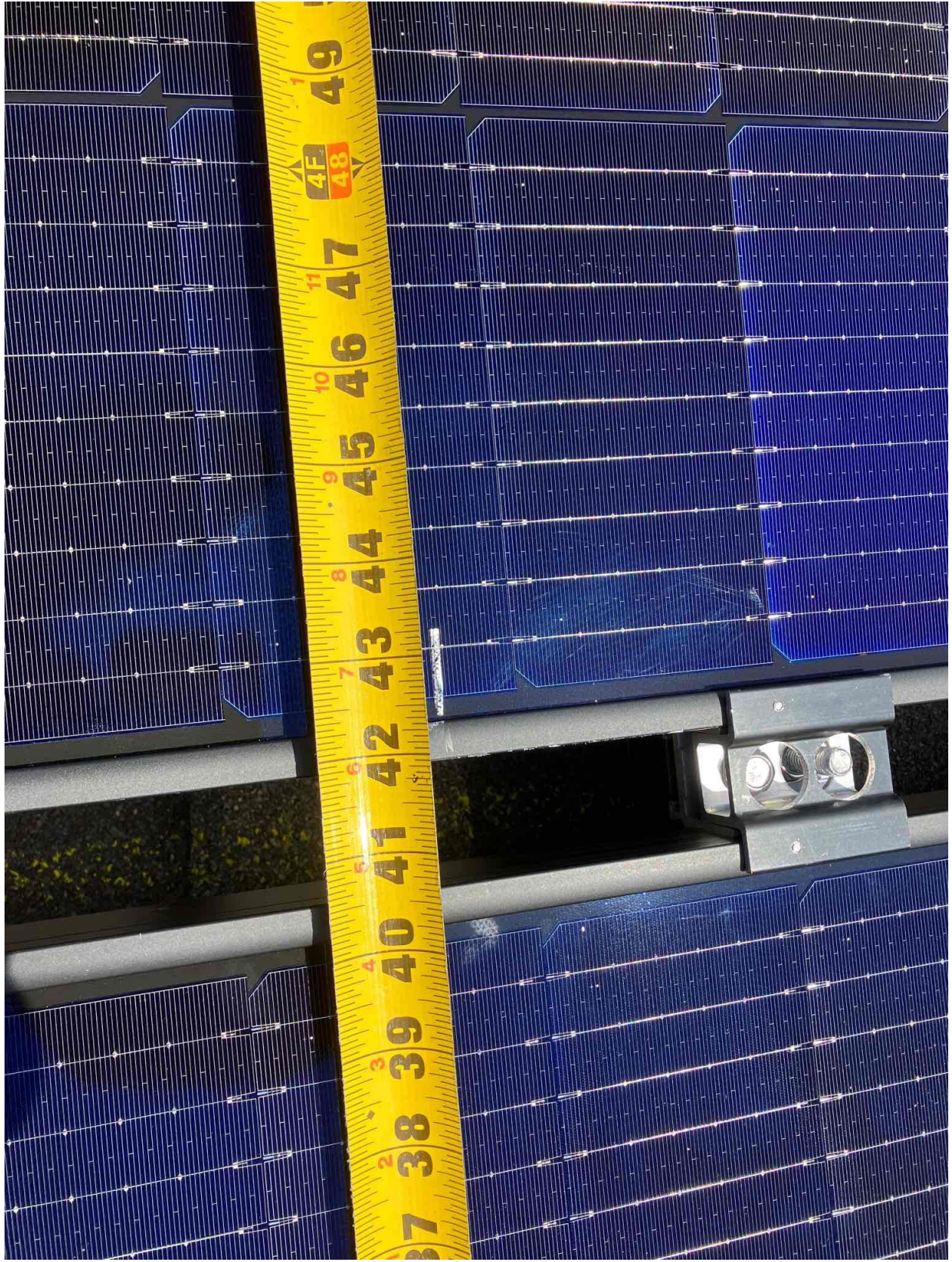












Jinko Solar Co., Ltd.
 No. 1, Jinko Road Shanghai Economic Development Zone
 Jiangsu, P. R. China 201206
 www.jinkosolar.com



PHOTOVOLTAIC MODULE
 Made in Penang, Malaysia

Solar Module Type: JKM385M-6RL3-B	385W
Maximum Power(Pmax)	357W
Power Measurement Tolerance	±1.02%
Maximum Power Voltage(Vmp)	18.45V
Maximum Power Current(Imp)	19.35A
Open Circuit Voltage(Voc)	22.80V
Short Circuit Current(Isc)	11.20A
Maximum System Voltage	1000VDC
Maximum Series connection protective device rating	20A
Operating Temperature	-40°C ~ +85°C
Temperature Coefficient	-0.45%/°C
Module Fire Performance	Class II
Weight	21.5(kg)
Dimension	1855*1028*35(mm)
STC: 1000W/m ² , AM1.5, 25°C	



System fire Class Rating: See installation instructions for installation
 Information for reference in Specified System Fire Class Rating with this Product
 The fire rating is Class C in Canada

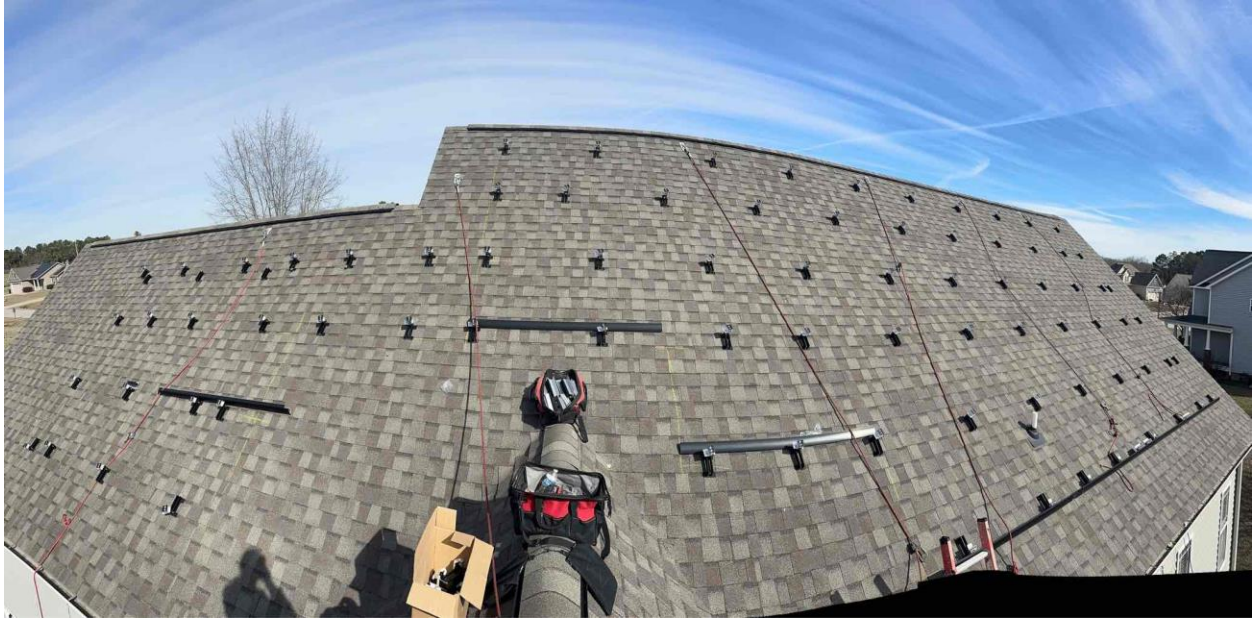
WARNING

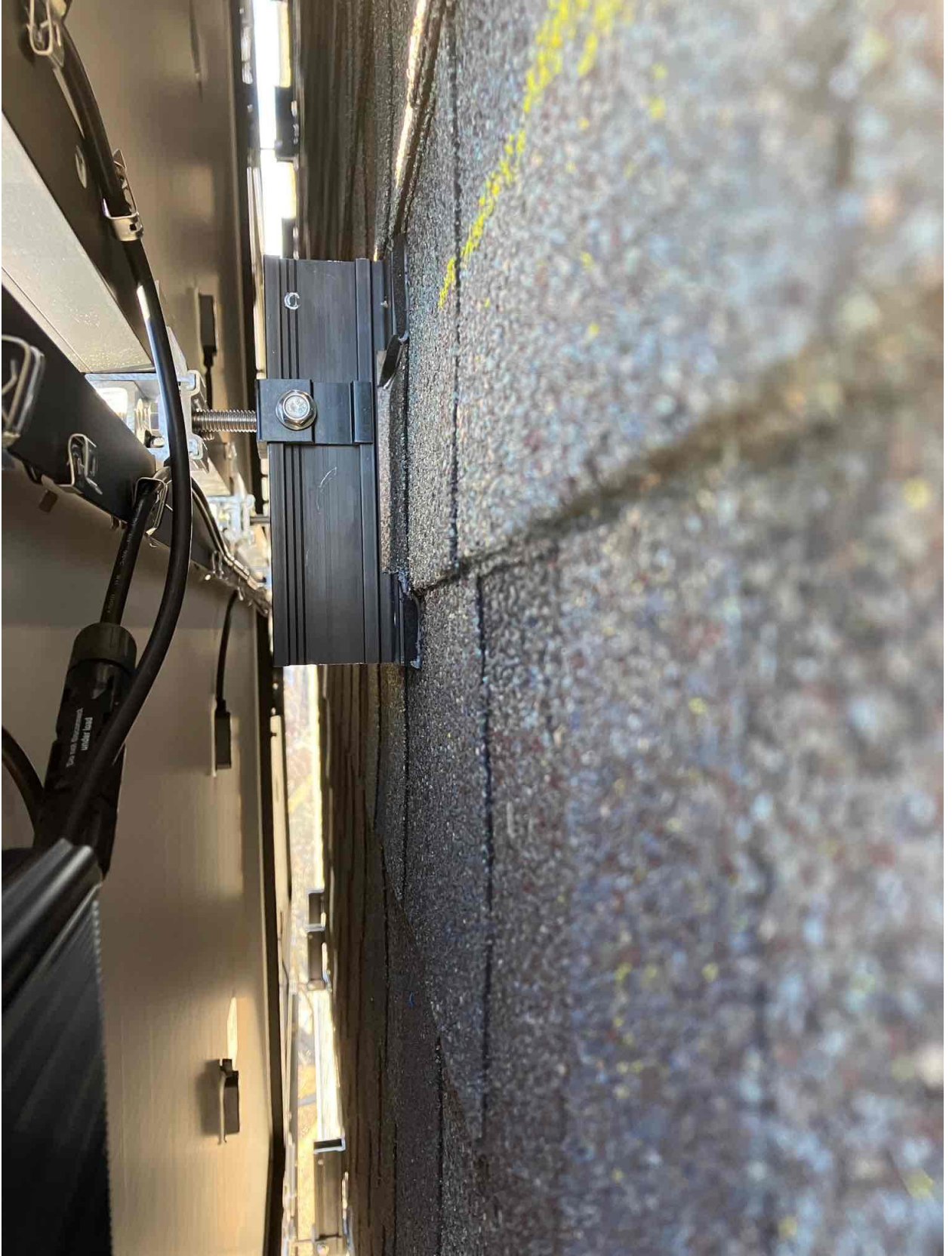
- ONLY qualified personnel should install or perform maintenance work on these modules
- BE AWARE of the possibility of electrical shock when connecting modules
- DO NOT damage or scratch the rear surface of the module
- SEE module literature for appropriate mating connectors

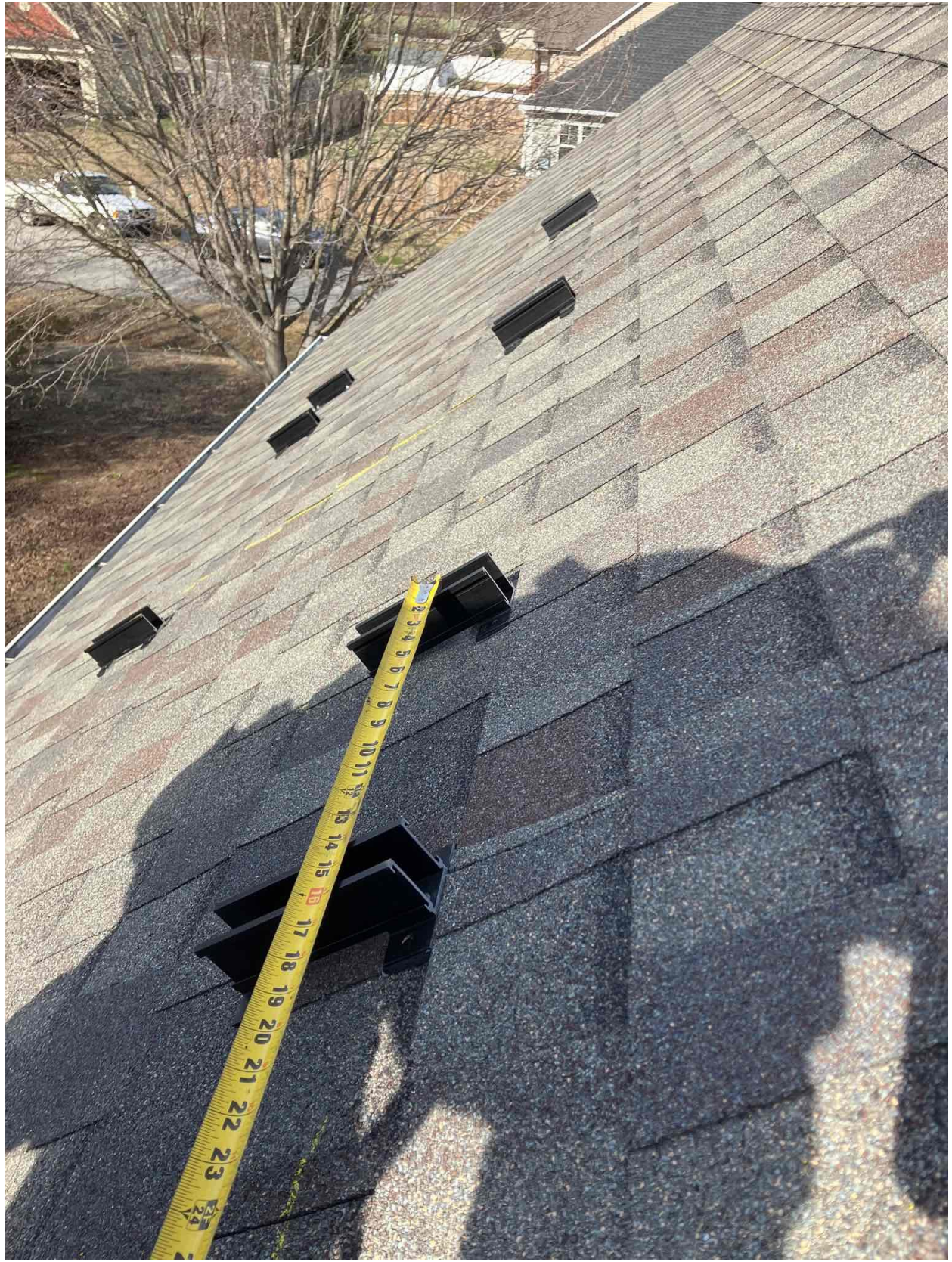
AVERTISSEMENT

- SEUL les professionnels doivent installer et maintenir les éléments
- NE PAS travailler sur ces modules sans précaution
- NE PAS endommager ou rayer la surface arrière des éléments
- NE PAS utiliser de connecteurs non recommandés
- Consultez la documentation des modules pour les conditions d'installation et les précautions d'usage
- For field connections, use 12 AWG wire installed at a minimum of 90°C-rated for wet conditions and insulated for joint voltage reduction (where exposed)



















EATON

CAUTION
DUAL POWER SUPPLY
EOLABELS.COM 179916

General Duty Safety Switch
Interrupteur de sécurité à usage général
Interruptor de seguridad de servicio general
60 A, 240 V~, 60 Hz
Complete ratings inside
Valeurs nominales complètes à l'intérieur
Información completa de capacidades en el interior
Further instructions inside
Autres instructions à l'intérieur
Instrucciones adicionales en el interior
Made in U.S.A. / Fabriqué aux E.-U. / Hecho en E.U.A.

DANGER
NEVER TOUCH TERMINALS
REVERSE INJURY OR DEATH.
NEVER TOUCH TERMINALS
WHEN THE SWITCH IS OPEN.
NEVER TOUCH TERMINALS
WHEN THE SWITCH IS OPEN.
**NEVER TOUCH TERMINALS
WHEN THE SWITCH IS OPEN.**
**NEVER TOUCH TERMINALS
WHEN THE SWITCH IS OPEN.**

WARNING
ELECTRIC SHOCK HAZARD
DO NOT TOUCH TERMINALS
TERMINALS ON BOTH THE LINE AND
LOAD SIDES MAY BE ENERGIZED
IN THE OPEN POSITION
EOLABELS.COM 05-012

**PHOTOVOLTAIC SYSTEM
EQUIPPED WITH
RAPID SHUTDOWN**
EOLABELS.COM 32478

**PHOTOVOLTAIC SYSTEM
AC DISCONNECT**
OPERATING VOLTAGE: 240 VOLTS
OPERATING CURRENT: 24.00 AMPS
EOLABELS.COM 05-000

DANGER
LOCKED
OUT
DO NOT REMOVE
EOLABELS.COM 05-000

ELECTRICAL
NETWORK
TERMINAL

WARNING
ELECTRIC SHOCK HAZARD
DO NOT TOUCH TERMINALS
TERMINALS ON BOTH LINE AND
LOAD SIDES MAY BE ENERGIZED
IN THE OPEN POSITION
DC VOLTAGE IS
ALWAYS PRESENT WHEN
SOLAR MODULES ARE
EXPOSED TO SUNLIGHT

If you have any questions about your system, please call
our Customer Support Team at

888.557.6431

or visit freedomforever.com/customer-service

This solar PV system was installed by

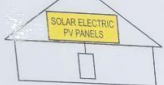


*Freedom Forever is a licensed contractor in all states it operates in. For more information visit freedomforever.com/contractors

solaredge

HD wave

SOLAR ELECTRIC
PV PANELS



TURN RAPID SHUTDOWN SWITCH TO
THE "OFF" POSITION TO SHUT DOWN
PV SYSTEM AND REDUCE
SHOCK HAZARD IN THE ARRAY

©2014 GE



PHOTOVOLTAIC POINT OF
INTERCONNECTION
WARNING - ELECTRIC SHOCK
HAZARD - DO NOT TOUCH
TERMINALS OR LOAD SIDE
BOTH THE LINE AND LOAD SIDE
MAY BE ENERGIZED IN THE OPEN
POSITION FOR SOURCE
OR ENERGIZE BOTH SOURCE
AND MAIN BREAKER
PV POWER SOURCE
WARNING -
OPERATING CURRENT 1500 A
MAXIMUM AC
OPERATING VOLTAGE 240 V

CAUTION
DUAL POWER SUPPLY

"ON TIME"
HEATING & COOLING
SERVICES
Call: 910-246-7321
Res: 910-892-9288



PHOTOVOLTAIC POINT OF
INTERCONNECTION.
WARNING - ELECTRIC SHOCK
HAZARD. DO NOT TOUCH
TERMINALS. TERMINALS ON
BOTH THE LINE AND LOAD SIDE
MAY BE ENERGIZED IN THE OPEN
POSITION. FOR SERVICE
DE-ENERGIZE BOTH SOURCE
AND MAIN BREAKER
PV POWER SOURCE
MAXIMUM AC A
OPERATING CURRENT:
MAXIMUM AC V
OPERATING VOLTAGE:
FCDLABELS.COM | FF5019

CAUTION
DUAL POWER SUPPLY
FCDLABELS.COM | FF5016


"ON TIME"
HEATING & COOLING
SERVICES
Cell: 910-246-7321
Res: 910-892-9288









Do Not Remove

17574211_21



SolarEdge Technologies GmbH/
SolarEdge Technologies Ltd.
Wendheim, 81818 Munich, Germany

017574211_21



SolarEdge Technologies Ltd.
Power Optimizer
SolarEdge Technologies GmbH/
Wendheim, 81818 Munich, Germany

CAUTION

HOT SURFACES TO REDUCE THE RISK OF BURNS DO NOT TOUCH PHOTOVOLTAIC ARRAY IS EXPOSED TO PHOTOVOLTAIC CURRENT. COVER EQUIPMENT COVER PV MODULE TO OPAQUE MATERIAL BEFORE CONNECTING OR DISCONNECTING THIS OPTIMIZER. DURING FAULT, ZERO CURRENT IS SOURCED INTO DC ARRAY BY CONVERTER.

WARNING ELECTRIC SHOCK HAZARD. THE DC CONDUCTORS OF THIS PHOTOVOLTAIC SYSTEM ARE UNGROUNDED AND MAY BE ENERGIZED.

AVERTISSEMENT

RISQUE DE CHOC ELECTRIQUE QUAND LE CHAMP PHOTOVOLTAIC EST EXPOSE A LA LUMIERE. UNE TENSION CC EST FOURNIE A L'INTERIEUR DES SURFACES CHAUDES. NE PAS TOUCHER. AFIN DE REDUIRE LES RISQUES DE BRULURES LE COURANT DE RETOUR INJECTE PAR LE CONVERTISSEUR EN CAS DE DEFAILLANCE DANS LE MODULE PV EST TOUJOURS NULL.

