











REC Alpha Pure-R Series
REC420AA Pure-R
 Serial Number: FBB-7005391118

Power Output (Pmax) 400 W
 Watt Class Rating 0/+10 W
 Power Production Tolerance +/- 3 %
 Rated Voltage (Vmp) 80.0 V
 Rated Current (Imp) 5.00 A
 Open Circuit Voltage (Voc) 1+/- 3% 89.8 V
 Short Circuit Current (Isc) 1+/- 3% 5.88 A
 Maximum System Voltage (Vsys) 1000 V
 Maximum Series Fuse (DC1) (UL) 20 A
 Maximum Series Fuse (DC1) (IEC) 25 A
 Design Load +4000 / -2000 PA*
 Maximum Test Load +2000 / -4000 PA*
(Power at STC - 1000 W/m², 25°C cell temp, 1.5 air mass 28°N)


 Complies to
 UL 6176-1, 2
 Class B
 104, 501, 505, 506, 507, 508, 509, 510, 511, 512, 513, 514, 515, 516, 517, 518, 519, 520, 521, 522, 523, 524, 525, 526, 527, 528, 529, 530, 531, 532, 533, 534, 535, 536, 537, 538, 539, 540, 541, 542, 543, 544, 545, 546, 547, 548, 549, 550, 551, 552, 553, 554, 555, 556, 557, 558, 559, 560, 561, 562, 563, 564, 565, 566, 567, 568, 569, 570, 571, 572, 573, 574, 575, 576, 577, 578, 579, 580, 581, 582, 583, 584, 585, 586, 587, 588, 589, 590, 591, 592, 593, 594, 595, 596, 597, 598, 599, 600, 601, 602, 603, 604, 605, 606, 607, 608, 609, 610, 611, 612, 613, 614, 615, 616, 617, 618, 619, 620, 621, 622, 623, 624, 625, 626, 627, 628, 629, 630, 631, 632, 633, 634, 635, 636, 637, 638, 639, 640, 641, 642, 643, 644, 645, 646, 647, 648, 649, 650, 651, 652, 653, 654, 655, 656, 657, 658, 659, 660, 661, 662, 663, 664, 665, 666, 667, 668, 669, 670, 671, 672, 673, 674, 675, 676, 677, 678, 679, 680, 681, 682, 683, 684, 685, 686, 687, 688, 689, 690, 691, 692, 693, 694, 695, 696, 697, 698, 699, 700, 701, 702, 703, 704, 705, 706, 707, 708, 709, 710, 711, 712, 713, 714, 715, 716, 717, 718, 719, 720, 721, 722, 723, 724, 725, 726, 727, 728, 729, 730, 731, 732, 733, 734, 735, 736, 737, 738, 739, 740, 741, 742, 743, 744, 745, 746, 747, 748, 749, 750, 751, 752, 753, 754, 755, 756, 757, 758, 759, 760, 761, 762, 763, 764, 765, 766, 767, 768, 769, 770, 771, 772, 773, 774, 775, 776, 777, 778, 779, 780, 781, 782, 783, 784, 785, 786, 787, 788, 789, 790, 791, 792, 793, 794, 795, 796, 797, 798, 799, 800, 801, 802, 803, 804, 805, 806, 807, 808, 809, 810, 811, 812, 813, 814, 815, 816, 817, 818, 819, 820, 821, 822, 823, 824, 825, 826, 827, 828, 829, 830, 831, 832, 833, 834, 835, 836, 837, 838, 839, 840, 841, 842, 843, 844, 845, 846, 847, 848, 849, 850, 851, 852, 853, 854, 855, 856, 857, 858, 859, 860, 861, 862, 863, 864, 865, 866, 867, 868, 869, 870, 871, 872, 873, 874, 875, 876, 877, 878, 879, 880, 881, 882, 883, 884, 885, 886, 887, 888, 889, 890, 891, 892, 893, 894, 895, 896, 897, 898, 899, 900, 901, 902, 903, 904, 905, 906, 907, 908, 909, 910, 911, 912, 913, 914, 915, 916, 917, 918, 919, 920, 921, 922, 923, 924, 925, 926, 927, 928, 929, 930, 931, 932, 933, 934, 935, 936, 937, 938, 939, 940, 941, 942, 943, 944, 945, 946, 947, 948, 949, 950, 951, 952, 953, 954, 955, 956, 957, 958, 959, 960, 961, 962, 963, 964, 965, 966, 967, 968, 969, 970, 971, 972, 973, 974, 975, 976, 977, 978, 979, 980, 981, 982, 983, 984, 985, 986, 987, 988, 989, 990, 991, 992, 993, 994, 995, 996, 997, 998, 999, 1000


 - 100-44122004
 - 101-111000004




Manufactured: 11.08.2022



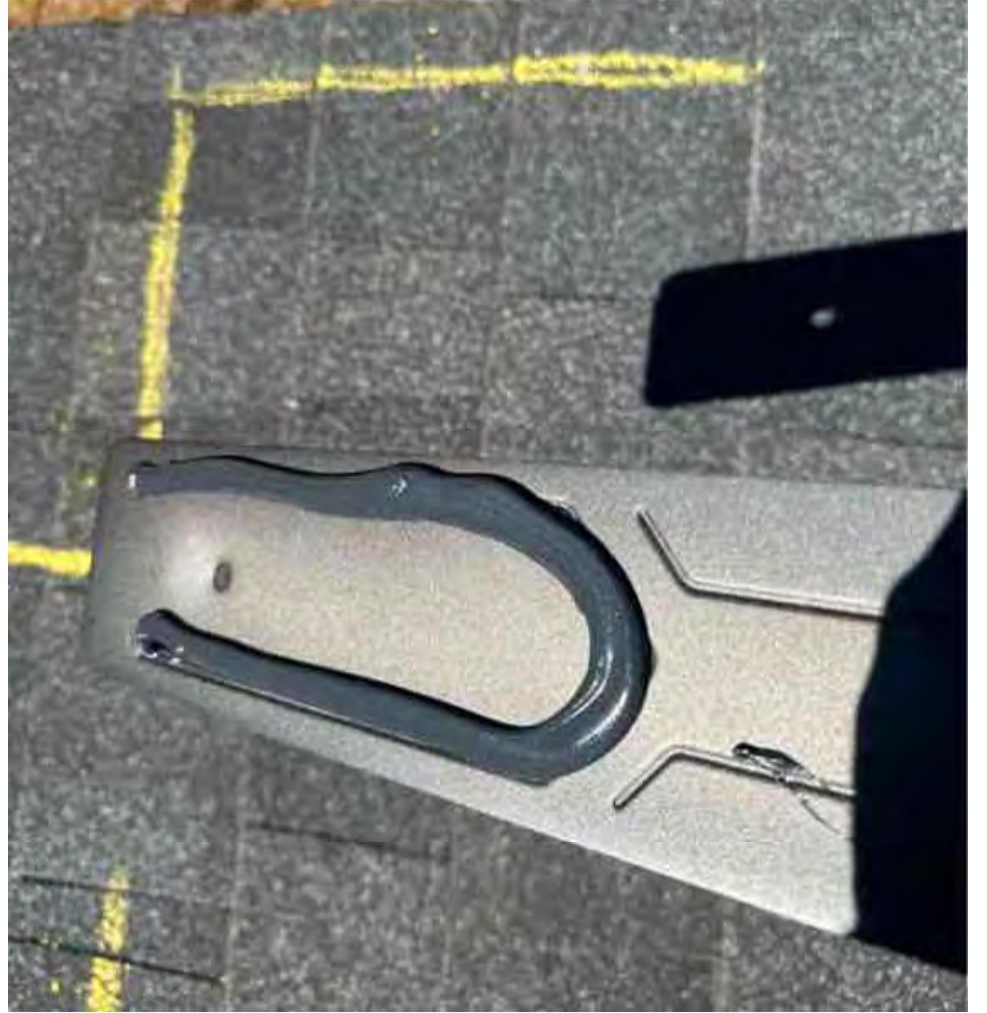
Warning symbol (lightning bolt): This device generates electrical arcs. Read the manual.
CAUTION: DO NOT DISCONNECT UNDER LOAD
Attention symbol (exclamation mark): Read the manual.
ATTENTION: NE PAS DÉCONNECTER SOUS TENSION
For more information, see the REC website: www.rec.com.sg
REC is a registered trademark of REC Solar Pte. Ltd.
© 2022 REC Solar Pte. Ltd. All rights reserved.
SD-Runway Contact: REC Solar, SINGAPORE
Solway: 074 47881100, Singapore, Tel: +65 6788 4444
For other regions see www.rec.com.sg



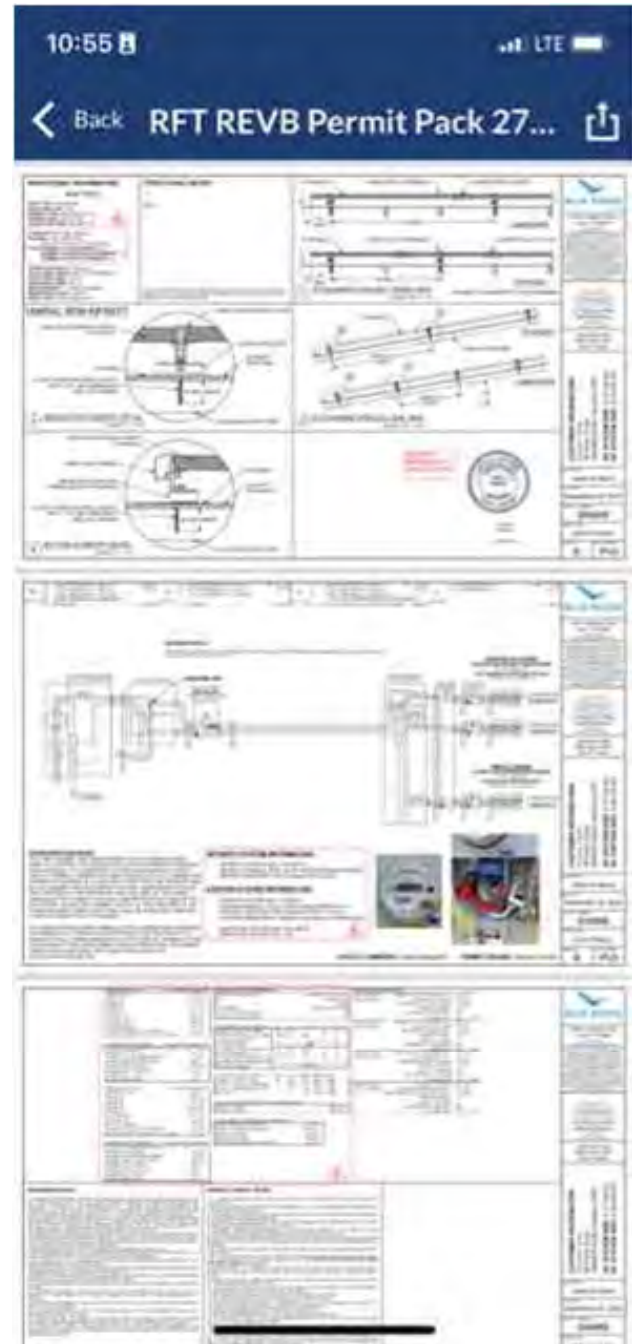












11:10 📶 LTE

← IQ Microinverters & Array

Not connected to IQ Gateway

IQ MICROINVERTERS ARRAY

IQ GATEWAY 1 - 202121096709

⊖ Active IQ Microinverters (23)

Note: The PV production values are typically updated every ~15 mins, if IQ Gateway is connected to Enphase Cloud via Wi-Fi/Ethernet.

202344041894 Grid Profile is set Last updated: 1 minute ago	⚡ 2.0W	●●●●●
202344042570 Grid Profile is set Last updated: 1 minute ago	⚡ 8.0W	●●●●●
202345027259 Grid Profile is set Last updated: 1 minute ago	⚡ 2.0W	●●●●●
202345028579 Grid Profile is set Last updated: 1 minute ago	⚡ 8.0W	●●●●●
482146005537 Grid Profile is set	⚡ 0.0W	●●●●●

🏠 Systems 📊 Dashboard 🛠 Support ☰ Menu



