



1446

| | | |
|--|--|--|
| | REC Alpha Pure Series REC405AA Pure Serial Number: FBB-4012261381 | Phone: +65 6489 9228 www.recgroup.com |
| Power Output (Pmax) | 405 W | |
| Watt Class Sorting | 0/+5 W | |
| Power Production Tolerance | +/- 3 % | |
| Rated Voltage (Vmpp) | 41.8 V | |
| Rated Current (Imp) | 9.69 A | |
| Open Circuit Voltage (Voc) (+/- 3%) | 49.1 V | |
| Short Circuit Current (Isc) (+/- 3%) | 10.41 A | |
| Maximum System Voltage (Vsys) | 1000 V | |
| Maximum Series Fuse (DC) (IUL) | 25 A | |
| Maximum Series Fuse (DC) (IEC) | +4666 / -2666 Pa* | |
| Design Load | +7000 / -4000 Pa* | |
| Maximum Test Load | +7000 / -4000 Pa* | |
| *Values at 25°C, 1000 W/m² AM 1.5, cell temp 25°C | | Manufactured: 25.07.2023 |
| <p>Warning electrical hazard. This module produces electricity when exposed to light. CAUTION: DO NOT DISCONNECT UNDER LOAD Avertissement: Risque de choc électrique. Ce module solaire produit de l'électricité lorsqu'il est exposé à la lumière. ATTENTION: NE PAS DECONNECTER SOUS TENSION</p> <p>For field connections, use min. 4 mm² AWG/UL PV wires insulated for a min. of 90°C Made in Singapore by REC SOLAR PTE. LTD. 20 TUAS SOUTH AVENUE 14, SINGAPORE 637312, SINGAPORE EU/Europe Contact: REC Solar EMEA GmbH Bismarckstr. 71a, 81541 Munich, Germany, Tel: +49 (0)89-442-35590 For other regions see: www.recgroup.com/contact</p> | | |

1446 neighbors rd
dunn nc 28334

| | | | |
|--|---|---|--|
|  REC Alpha Pure Series REC405AA Pure Serial Number: FBB-4012261381 | | Phone: +65 6485 9228 www.recgroup.com | |
| Power Output (Pmax) Watt Class Sorting Power Production Tolerance Rated Voltage (Vmpp) Rated Current (Impp) Open Circuit Voltage (Voc) (+/- 3%) Short Circuit Current (Isc) (+/- 3%) Maximum System Voltage (Vsys) Maximum Series Fuse (DC) (UL) Maximum Series Fuse (DC) (IEC) Design Load Maximum Test Load <small>(Values at STC: 1000 W/m² AM 1.5, cell temp 25 °C)</small> | 405 W 0/+5 W +/- 3 % 41.8 V 9.69 A 49.1 V 10.41 A 1000 V 25 A 25 A +4666 / -2666 Pa* +7000 / -4000 Pa* |  <ul style="list-style-type: none"> - Conforms to UL Std. E1730-1-2 - Certified to CSA Std. C22.2#61730-1-2 Intertek 5017774 <ul style="list-style-type: none"> - UL Fire Rating Type 2* |  <ul style="list-style-type: none"> - IEC 61215-2016 - IEC 61730-2016 |
| <small>See installation manual for *) mechanical installation requirements and *) installation requirements to achieve a specified system fire class</small> | |   | |
|  | | Manufactured: 25.07.2023 | |
| <p>Warning electrical hazard. This module produces electricity when exposed to light. CAUTION: DO NOT DISCONNECT UNDER LOAD</p> <p>Avertissement: Risque de choc électrique. Ce module solaire produit de l'électricité lorsqu'il est exposé à la lumière. ATTENTION: NE PAS DECONNECTER SOUS TENSION</p> <p>For field connections, use min. 4 mm²(12 AWG) UL PV wires insulated for a min. of 90°C Made in Singapore by REC SOLAR PTE. LTD. 20 TUAS SOUTH AVENUE 14, SINGAPORE 637312, SINGAPORE</p> <p>EU/ Europe Contact: REC Solar EMEA GmbH Balaistr. 71a, 81541 Munich, Germany, Tel: +49 (0)89-442-38590 For other regions see: www.recgroup.com/contact</p> | | | |

1446 neighbors rd
 dunn nc 28334













ENPHASE.

IQ8+

Grid Support Utility Inverter
Multimode Inverter

Patent Information: <https://enphase.com/patents>

Grid Power Factor: 1 to 0.9+1
DC Input Voltage: 16-80V
Max. Input Short-Circuit Current: 20A
Max. Input Continuous Current: 12.5A
AC Output Voltage: 240V~
AC Output Current: 12.5A
AC Output Frequency: 60Hz
AC Output Power (Effic. Conversion): 2900W
Operating Temperature: -40°C to 40°C
Ingress Protection: IP65, Type B
Photovoltaic Rapid Shutdown Equipment
IEC 60320 and IEC 62109-2
UL 1741 3rd Ed., vol. 88 Compliant

This device complies with part 15 of the FCC Rules. Operation is subject to the following two conditions: (1) This device may not cause harmful interference. (2) This device must accept any interference received, including interference that may cause undesired operation.



WARNING: ELECTRIC SHOCK HAZARD. DC CONDUCTORS OF THIS PHOTOVOLTAIC SYSTEM ARE UNGROUNDING AND MAY BE ENERGIZED. AC AND DC VOLTAGE SOURCES TERMINATE INSIDE THE EQUIPMENT. DISCONNECT BOTH BEFORE SERVICING. PHOTOVOLTAIC ARRAY SUPPLIES A DC VOLTAGE TO THIS EQUIPMENT WHEN EXPOSED TO LIGHT. HOT SURFACES. TO REDUCE THE RISK OF BURNS, DO NOT TOUCH.

ATTENTION: RISQUE ELECTROUCCION LES CONDUCTEURS DE CE SYSTEME PHOTOVOLTAIQUE NE SONT PAS RELES A LA TERRE ET PEUVENT ETRE SOUS TENSION DES SOURCES DE TENSION CA ET DC SOUS TENSION. DES APPRELS, SOUS LES SOURCES AVANT TOUTE INTERVENTION. LES CABLES COURANT CONTINUS SONT SOUS TENSION LORSQUE LE COMPARTIMENT PHOTOVOLTAIQUE EST EXPOSE A LA LUMIERE. RISQUE DE BRULURE, NE PAS TOUCHER.

Made in the USA
from imported parts

























ENPHASE.

IQ8+

Grid Support Utility Interactive Inverter
Multimode Inverter
Patent Information: <https://enphase.com/patents>

Off-grid Power Factor: -1 to 0 to +1

Grid-tied Power Factor: +/- 0.95

DC input range: 16-58 V_{rms}

Max. input short-circuit current: 25 A

Max. input continuous current: 12 A

AC output voltage: 240 V_{rms}

AC output current: 1.21 A

AC output frequency: 60 Hz

AC output power (max. continuous): 290 VA

Operating temperature: -40 °C to +40 °C

Ingress protection: NEMA Type 6

Photovoltaic Rapid Shutdown Equipment

NEC 690.12 and C22.1-2015 Rule 64-218

UL 1741 3rd Ed., mol. 09 Compliant



This device complies with part 15 of the FCC Rules. Operation is subject to the following two conditions: (1) This device may not cause harmful interference. (2) This device must accept any interference received, including interference that may cause undesired operation.



CAUTION: RISK OF SHOCK. WARRANTY VOID IF COVER REMOVED. NO USER SERVICEABLE PARTS INSIDE. REFER SERVICING TO QUALIFIED SERVICE PERSONNEL.

WARNING: ELECTRIC SHOCK HAZARD. DC CONDUCTORS OF THIS PHOTOVOLTAIC SYSTEM ARE UNGROUNDING AND MAY BE ENERGIZED. AC AND DC VOLTAGE SOURCES TERMINATE INSIDE THIS EQUIPMENT. DISCONNECT BOTH BEFORE SERVICING. PHOTOVOLTAIC ARRAY SUPPLIES AC DC VOLTAGE TO THIS EQUIPMENT WHEN EXPOSED TO LIGHT. HOT SURFACES: TO REDUCE THE RISK OF BURNS - DO NOT TOUCH.

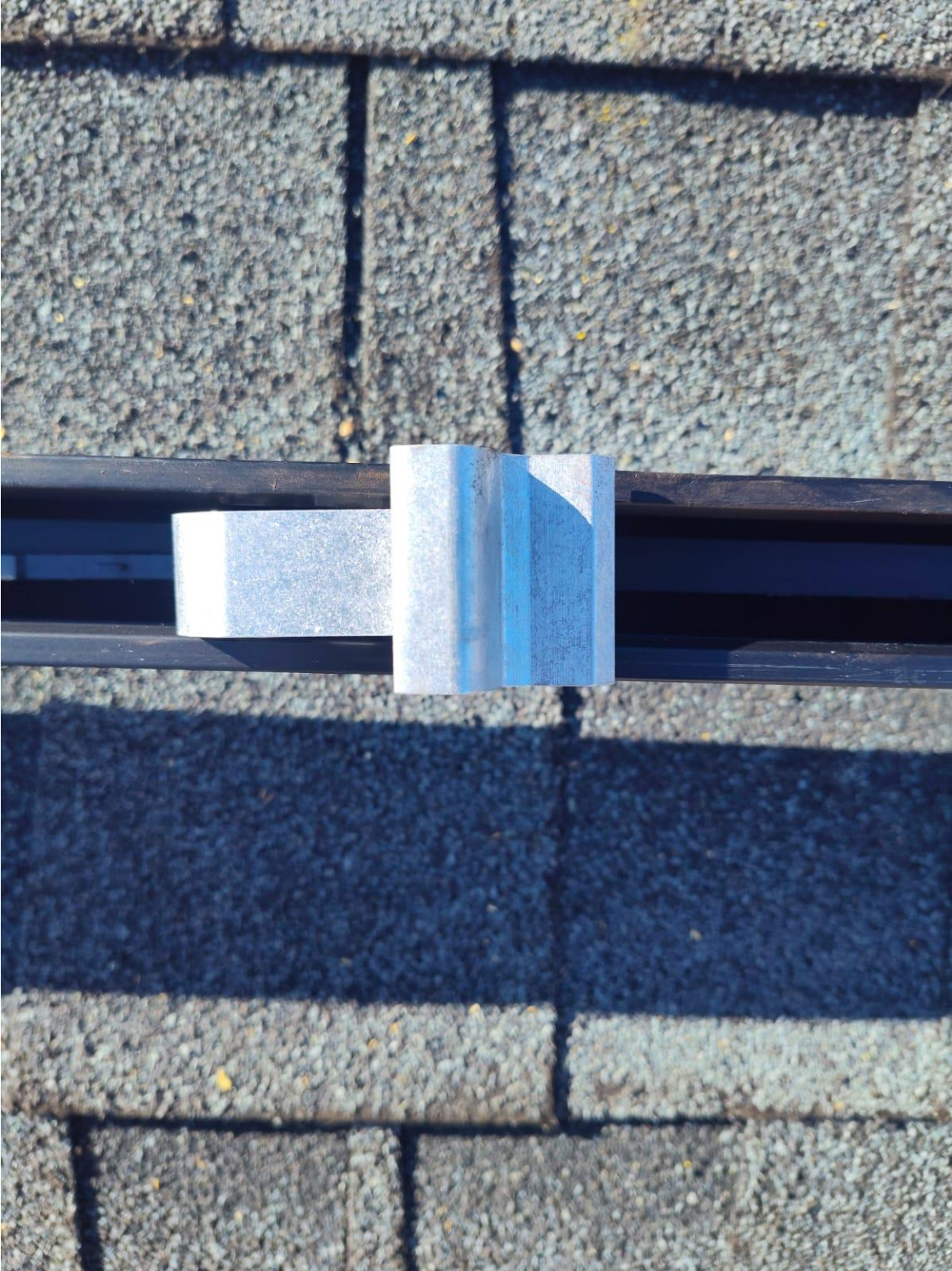
ATTENTION: RISQUE D'ELECTROCUTION. LES CONDUCTEURS CC DE CE SYSTEME PHOTOVOLTAIQUE NE SONT PAS RELIES A LA TERRE ET PEUVENT ETRE SOUS TENSION. DES SOURCES DE TENSION CA ET CC SONT CONNECTEES A CET APPAREIL. ISOLEZ LES DEUX SOURCES CONTINUUS AVANT TOUTE INTERVENTION. LES CABLES COURANT CONTINU SONT SOUS TENSION LORSQUE LE CHAMP PHOTOVOLTAIQUE EST EXPOSE A LA LUMIERE. RISQUE DE BRULURE, NE PAS TOUCHER.

Made in the USA
from imported parts









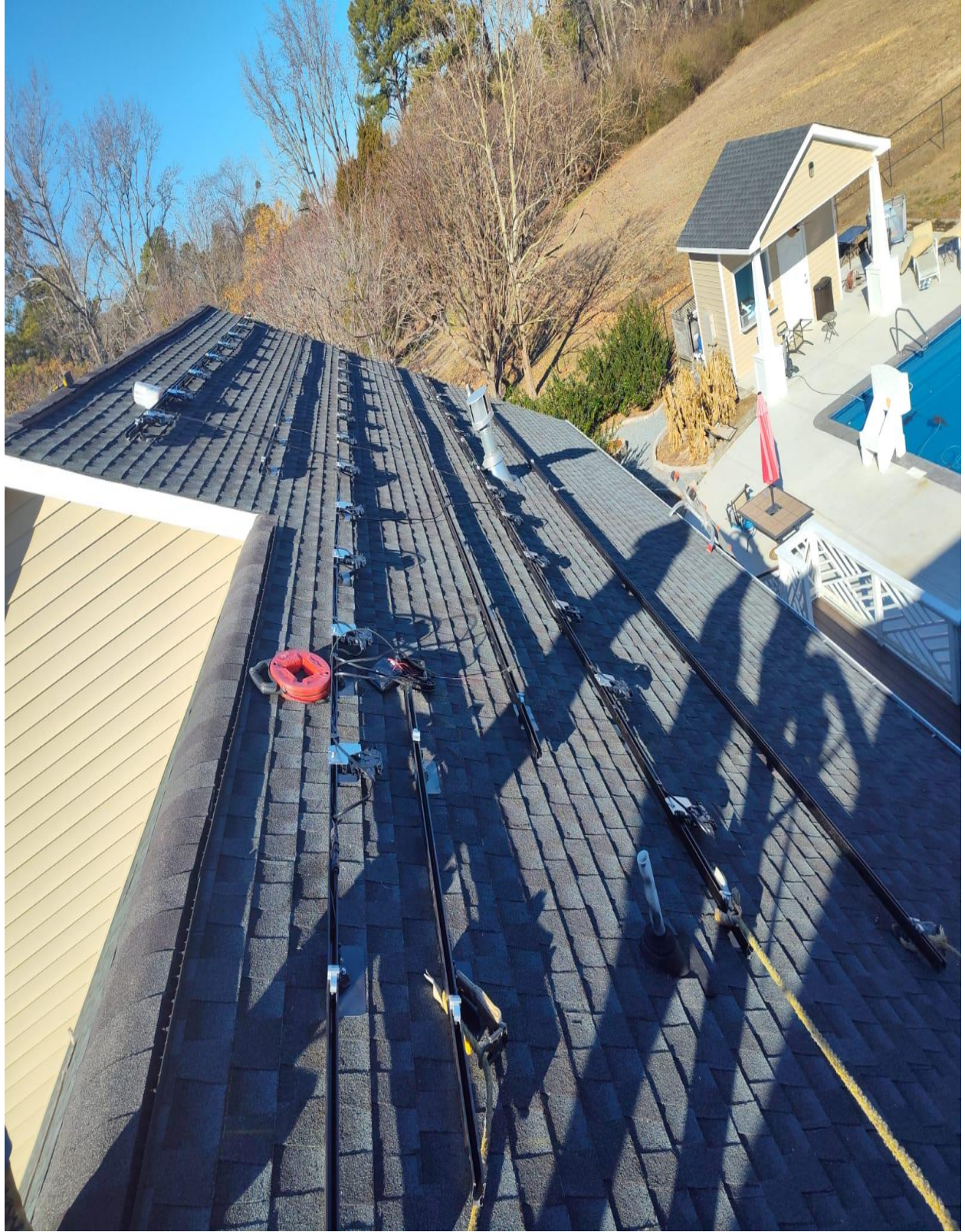


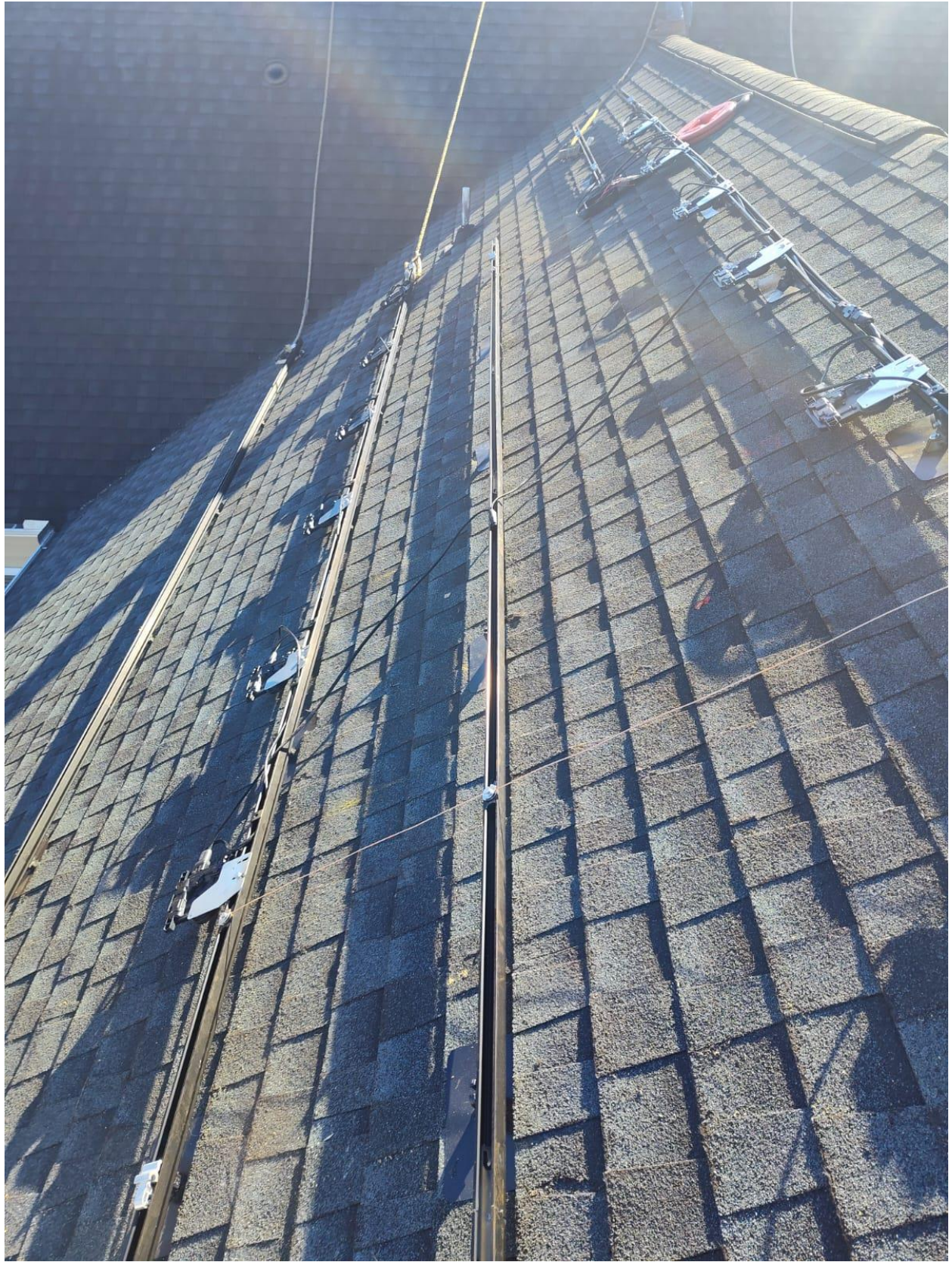


846-00387-17
250VAC-20A
19°C-231B

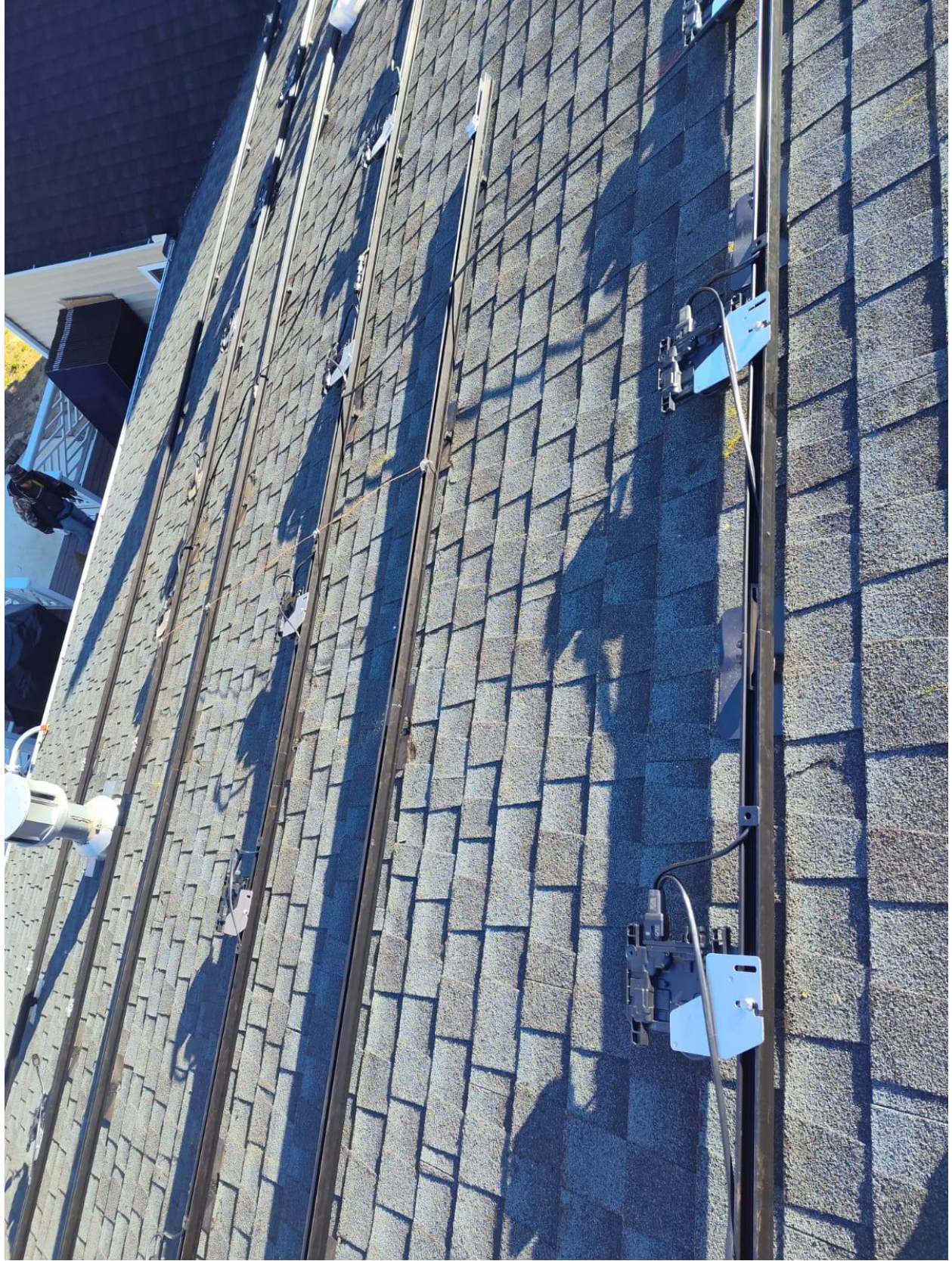
UL
CERTIFIED
MILWAUKEE-CA
E486080

090

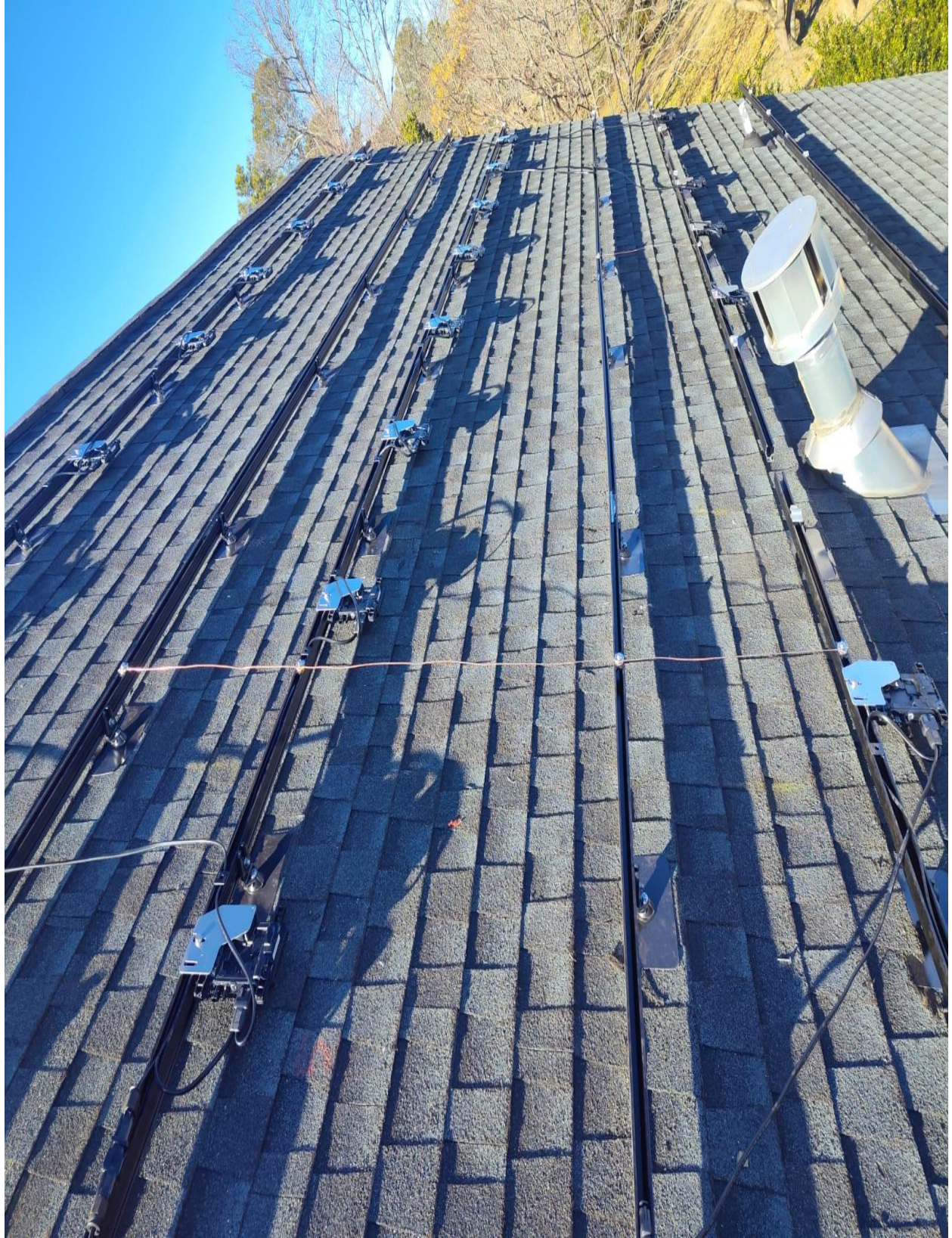


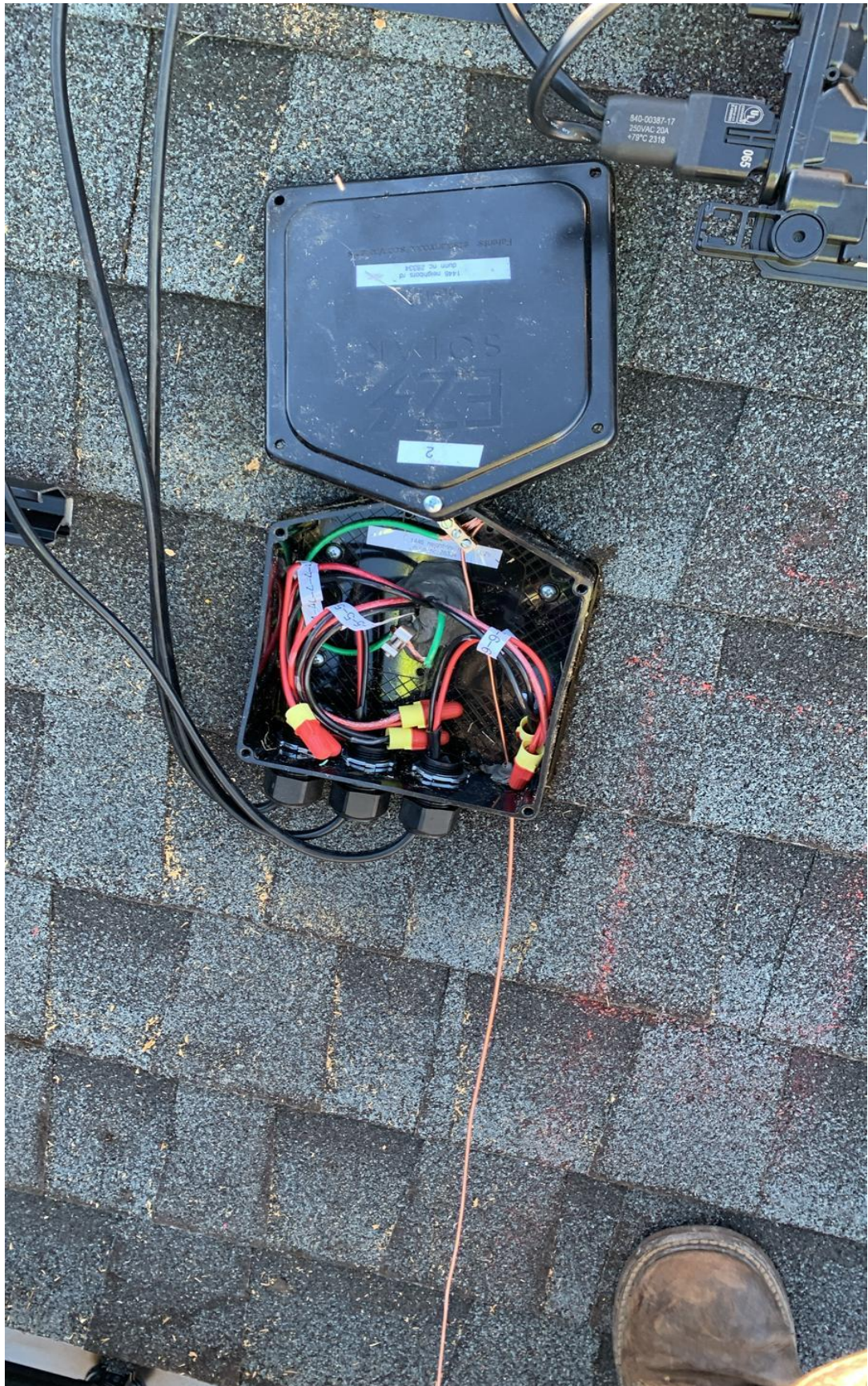




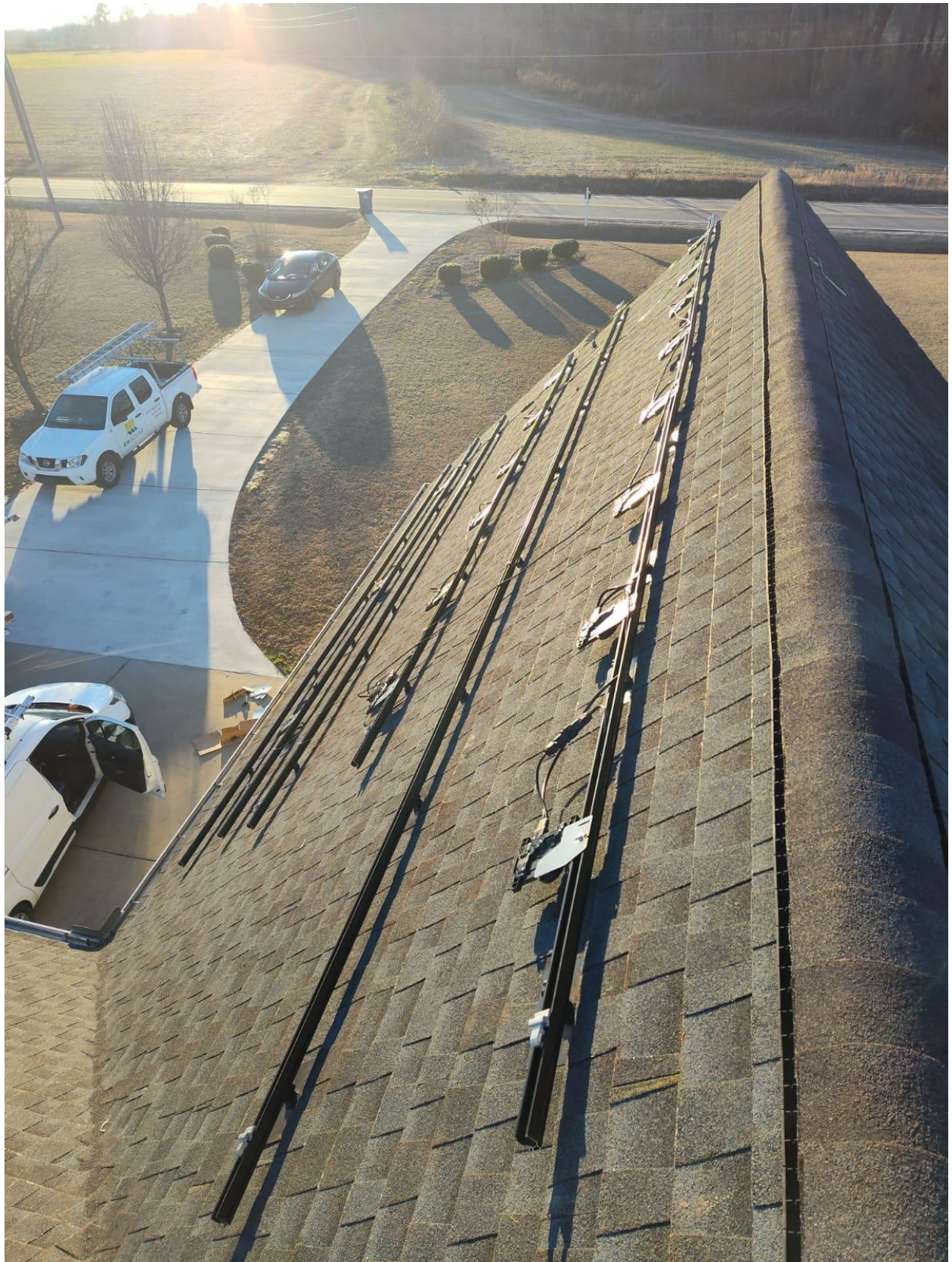






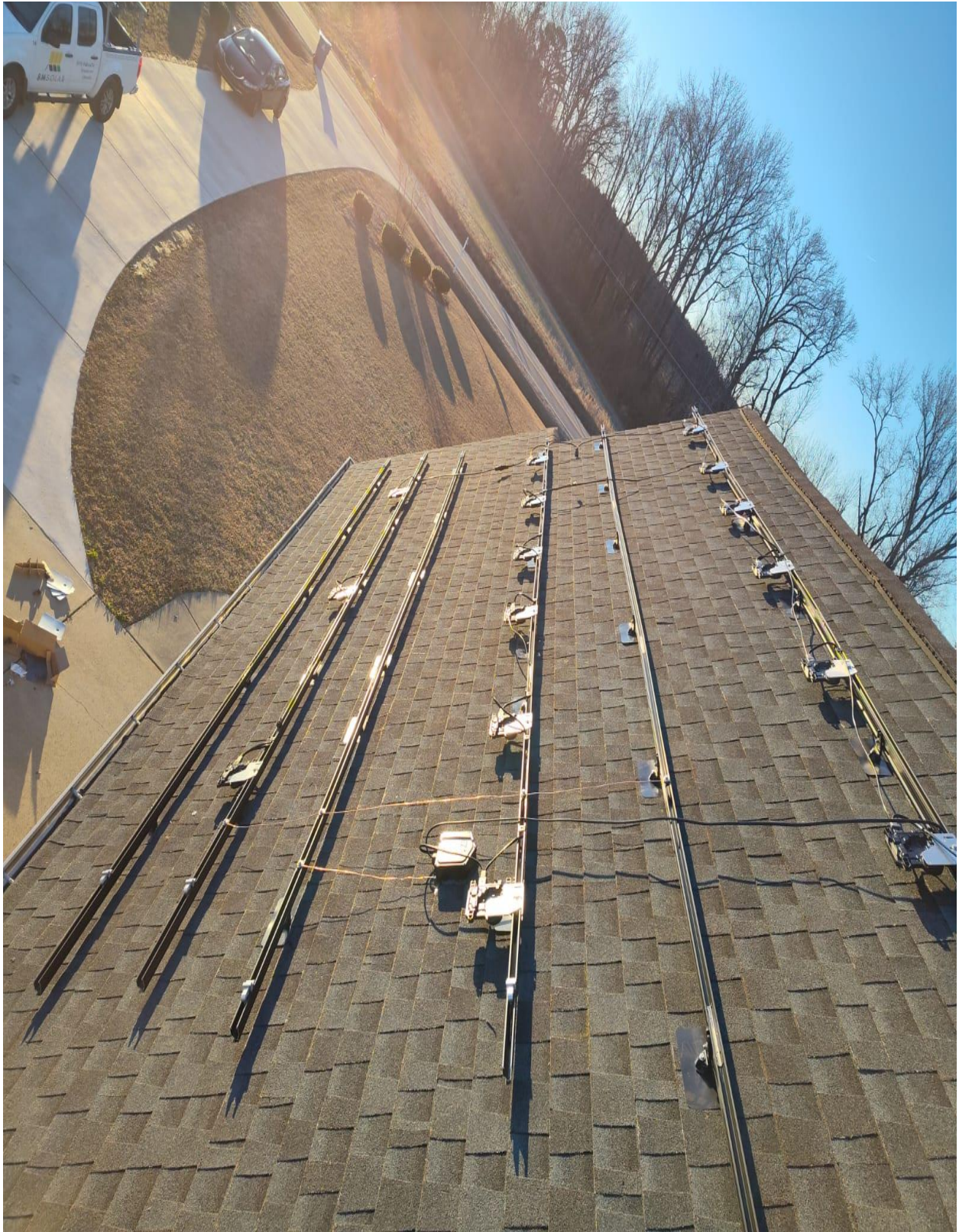














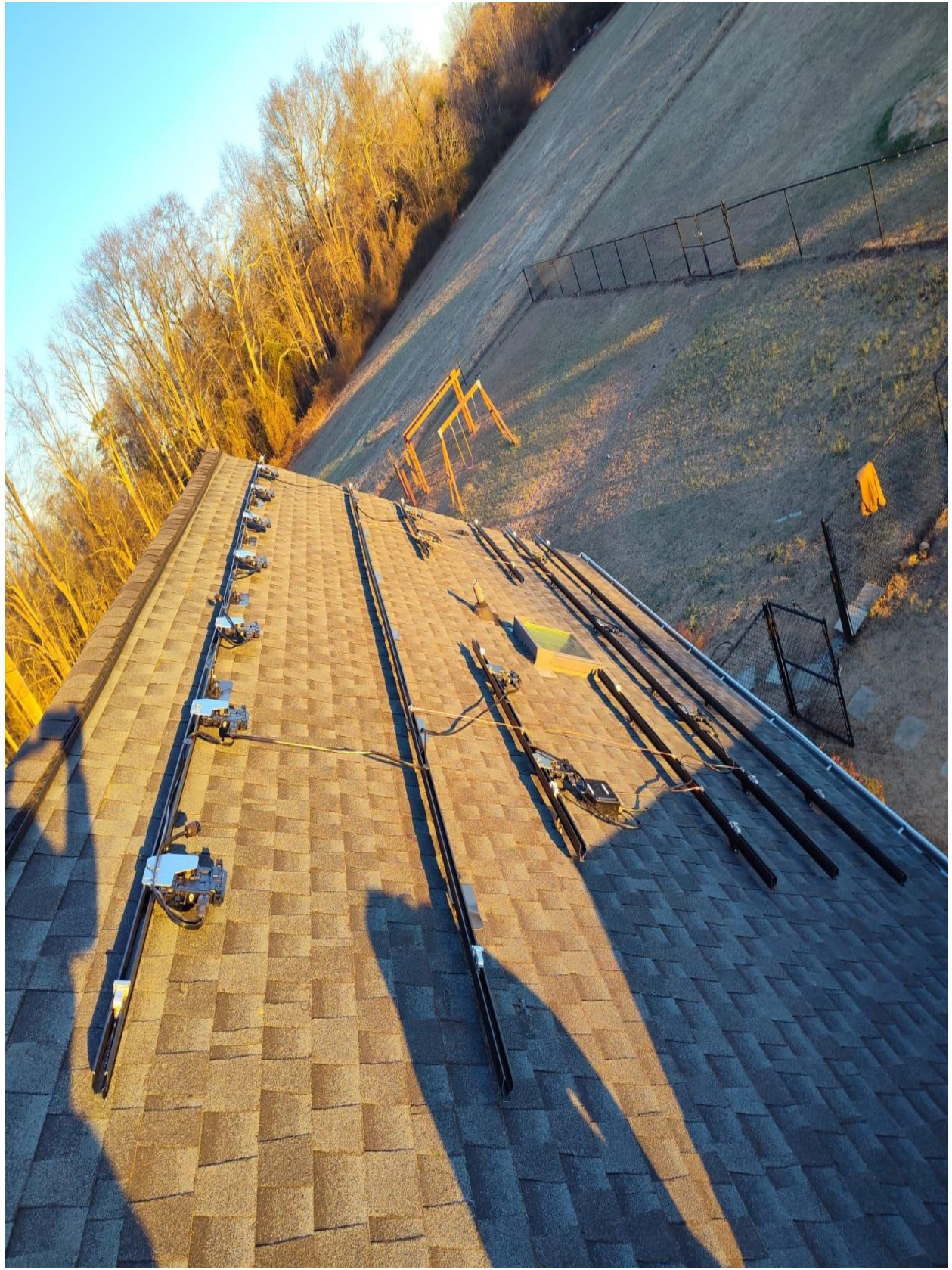
3

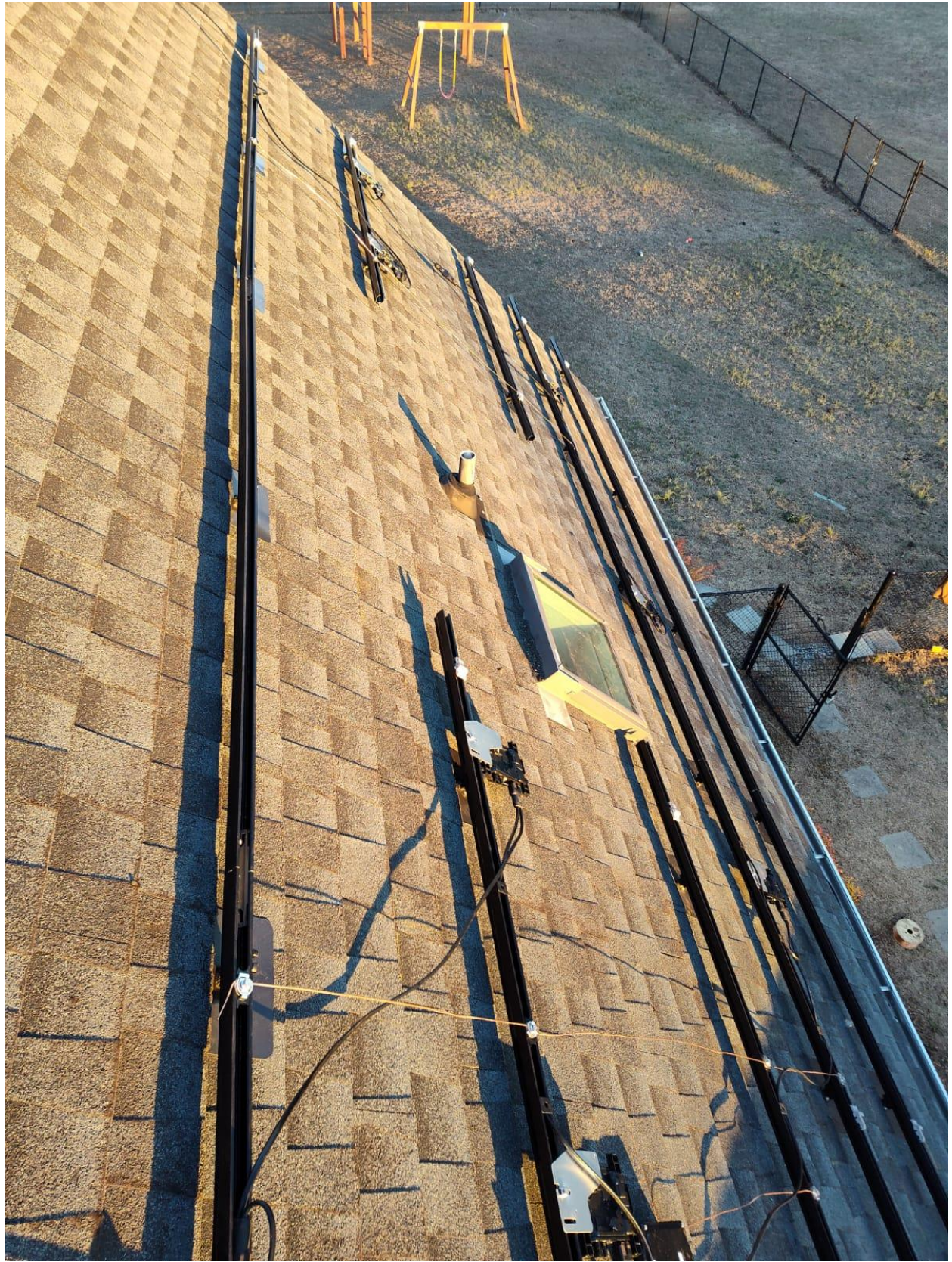
EZ
SOLAR

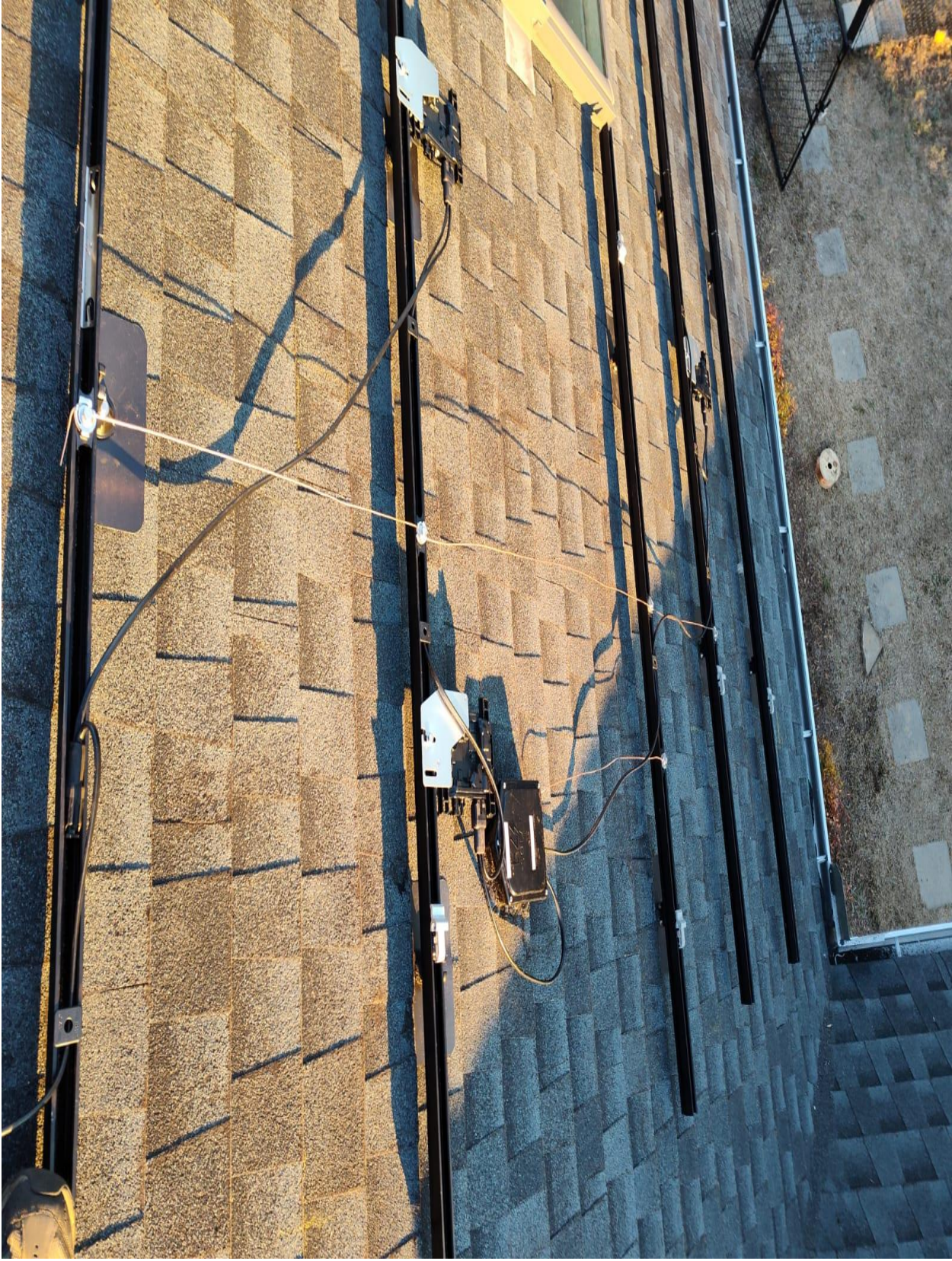
JB-1.2

1446 neighbors rd
dunn nc 28334

Patents: ezsolarproducts.com/patents



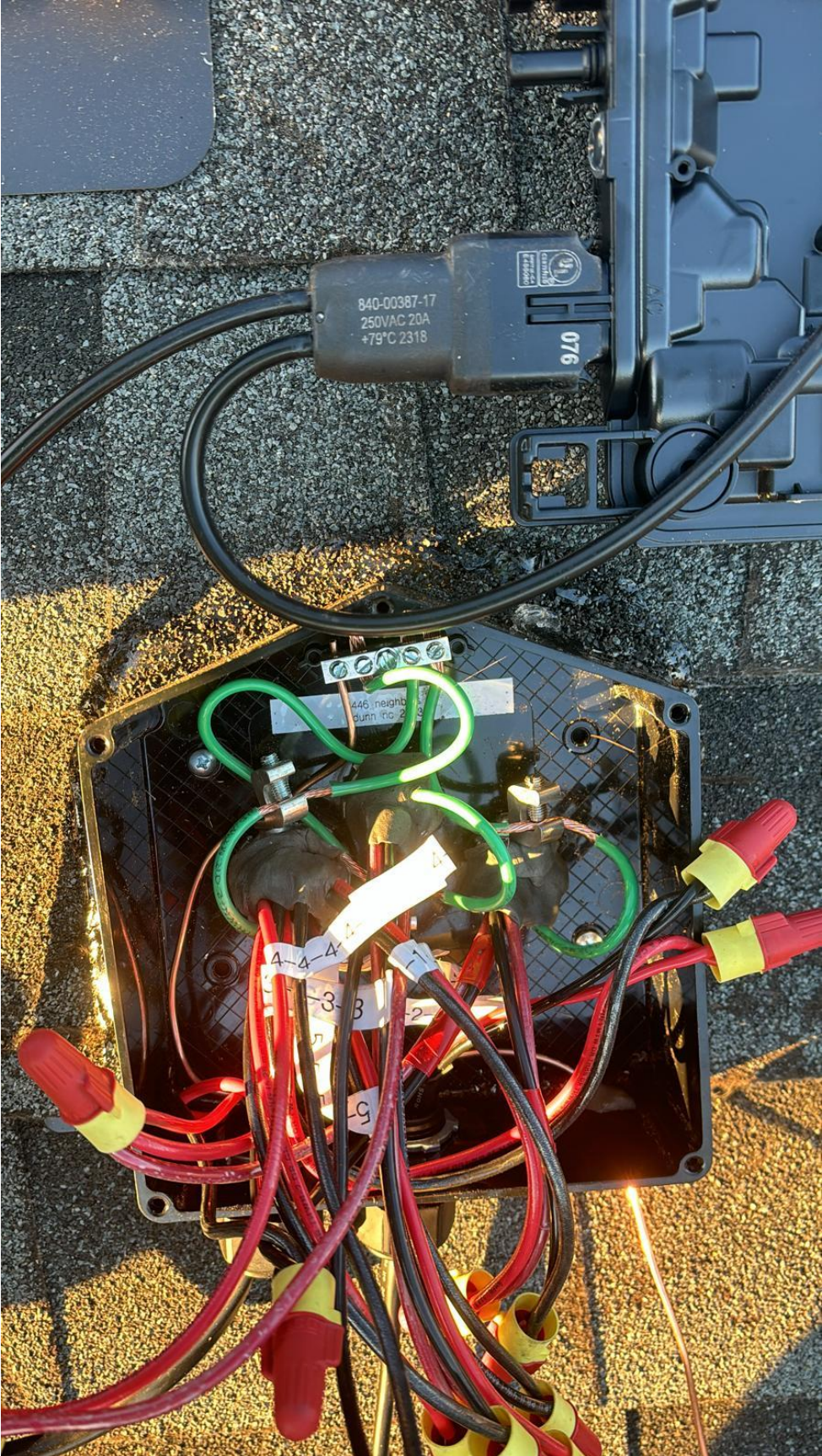














250VAC 20A
+79°C/2318

076

1

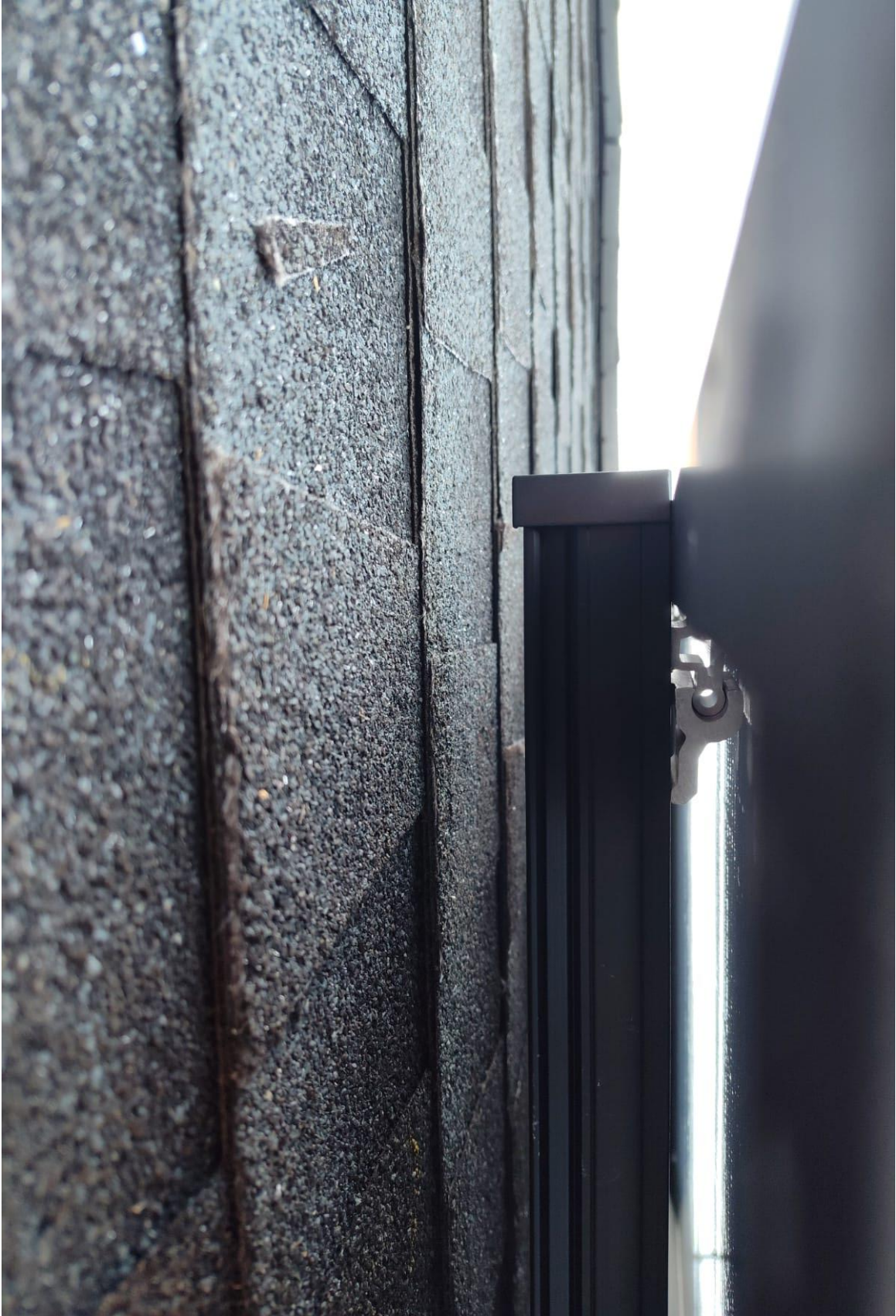
EZ 
SOLAR

JB-1.2

1446 neighbors rd
dunn nc 28334

Patents: ezsolarproducts.com/patents









REGASUS
SOLAR™
ENDPANEL
1PKG 22A
C US A





















