







15:59 ↗

📶 📶 🔋 22



Tesla Solar Inverter

Solar Inverter

Disabled

DC Only

Enabled

Inverter State	Active
AC Voltage (L-L)	245.2V
Line 1	122.7V
Line 2	123V
Max Current Output Tap to Set	32A (7.6 kW) >

Solar DC Inputs

MPPT 1	301.8V / 1.47A
MPPT 2	242.6V / 1.33A
MPPT 3	-3.6V / 0A
MPPT 4	-3.3V / 0A



Serial No. **M230509-B0583**



Model Number	MSE396SX9R
Rated Maximum Power	[W] 395 (-0/+3%)
Open – Circuit Voltage	[V] 45.2
Voltage at Pmax	[V] 37.0
Short – Circuit Current	[A] 11.24
Current at Pmax	[A] 10.68
Max. System Voltage	[V] 1000
Max. Series overcurrent protective device (where required) fuse rating	[A] 20
Standard test condition	AM=1.5 E=1000W/m² Tc=25°C



For field connections, use Cu only, 12AWF (US, CANADA), 4mm² (EU, Asia) wires insulated for a minimum of 90°C, rated for wet conditions and resistant to ultra violet radiation (where exposed). See installation manual for PV connector details and compatibility. Avertissement Risque de choc électrique. Ce module produit des tensions élevées dans la lumière du soleil. Risque électrique peut choquer, brûler ou de provoquer la mort. Ne pas toucher la borne.



LISTED
PHOTOVOLTAIC MODULE
OVER 600 VOLTS E864748



Fire Rating : Type 1
 Class of Equipment: Class II
 Design Load: Minimum 3600 Pa front and minimum 1600 Pa back load

Warning
 PV modules generate voltage even with very weak light. Do not open the junction box. Les modules PV produisent tension même en basse lumière.
 Ne pas ouvrir la boîte de jonction.



Buy American Act & the American Recovery and Reinvestment Act



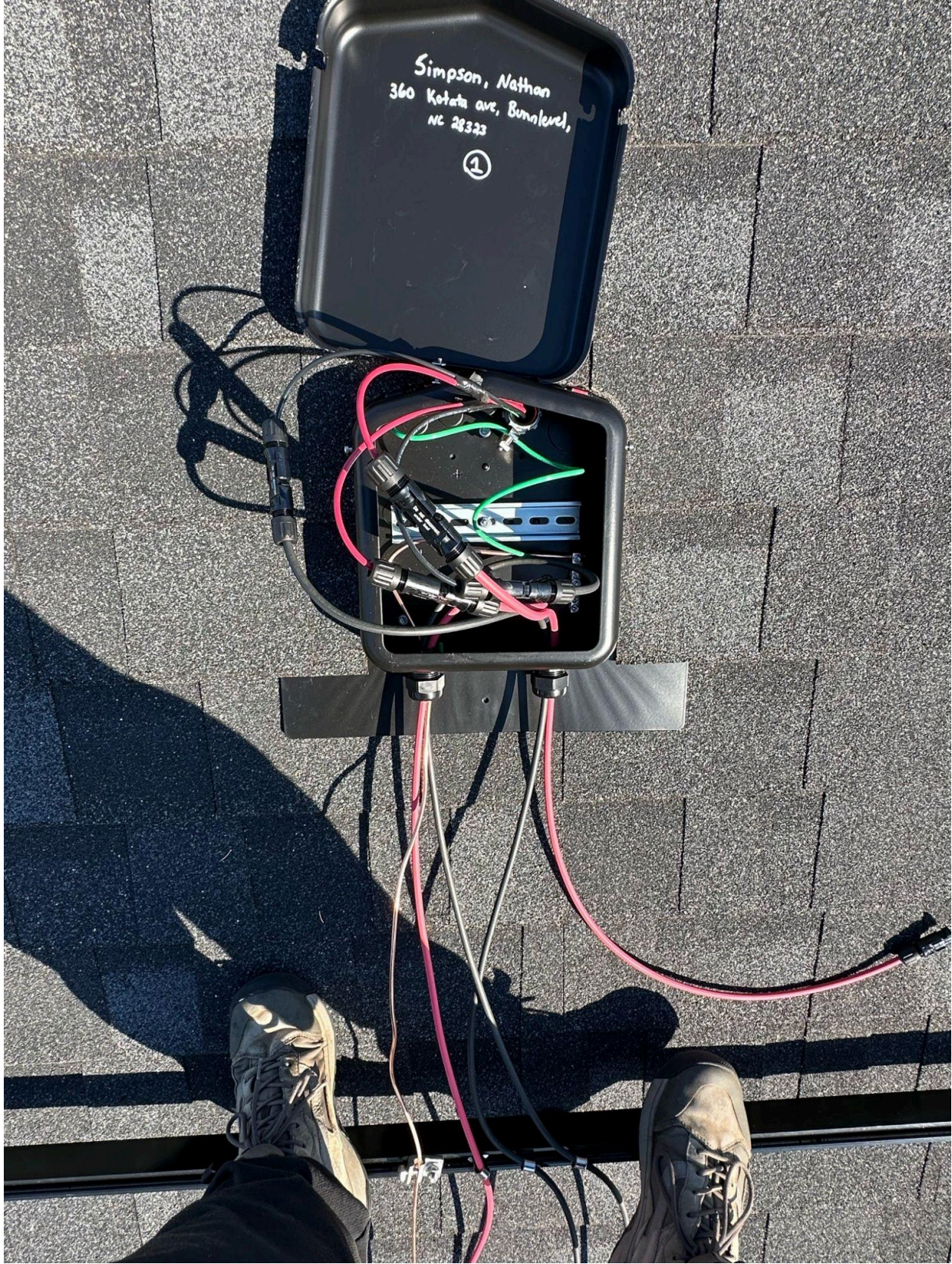
MADE IN THE USA
MODULES ASSEMBLED & ENGINEERED OF U.S. AND NON-U.S. PARTS

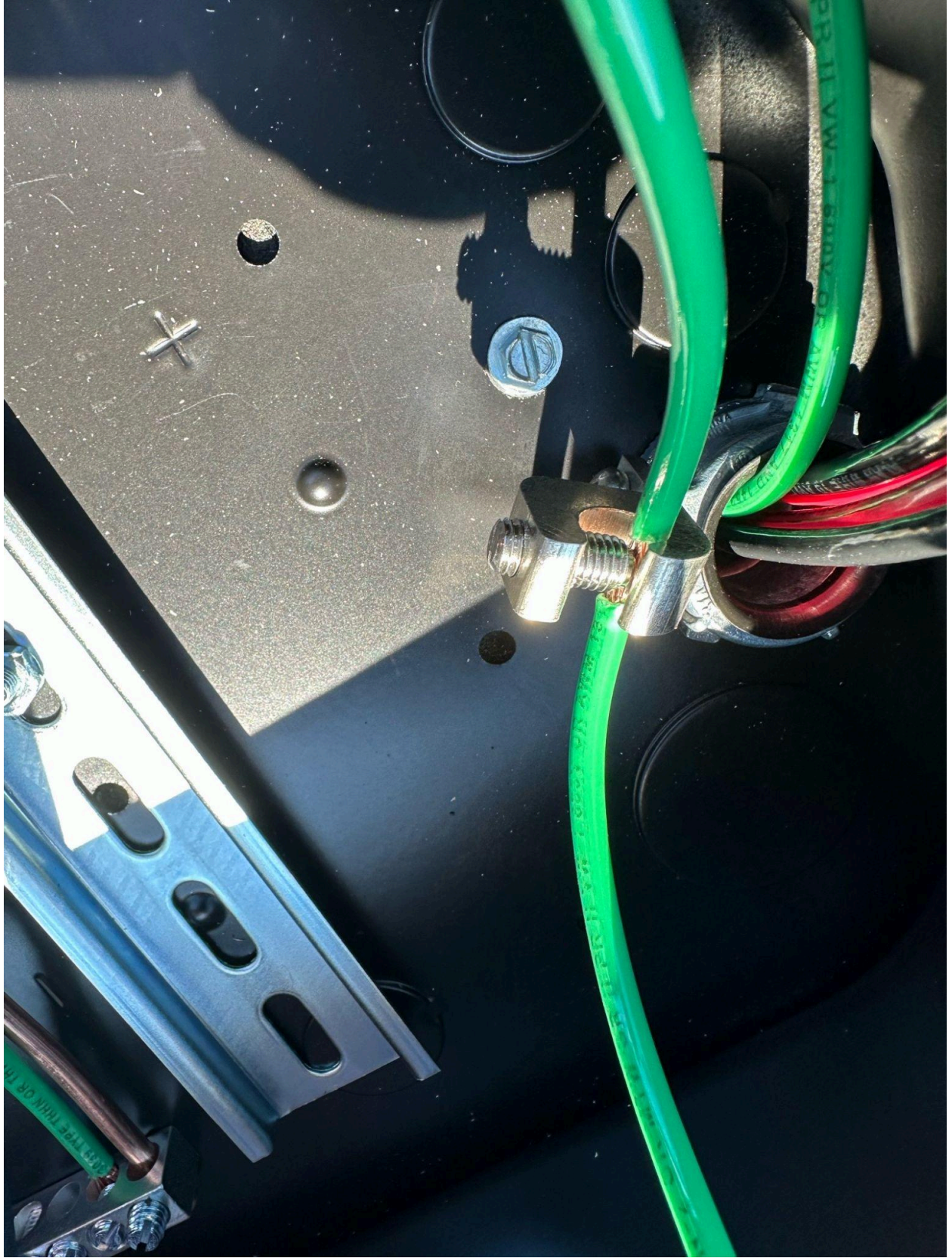
Address:
8303 S. New Braunfels Ave.
San Antonio, TX 78235

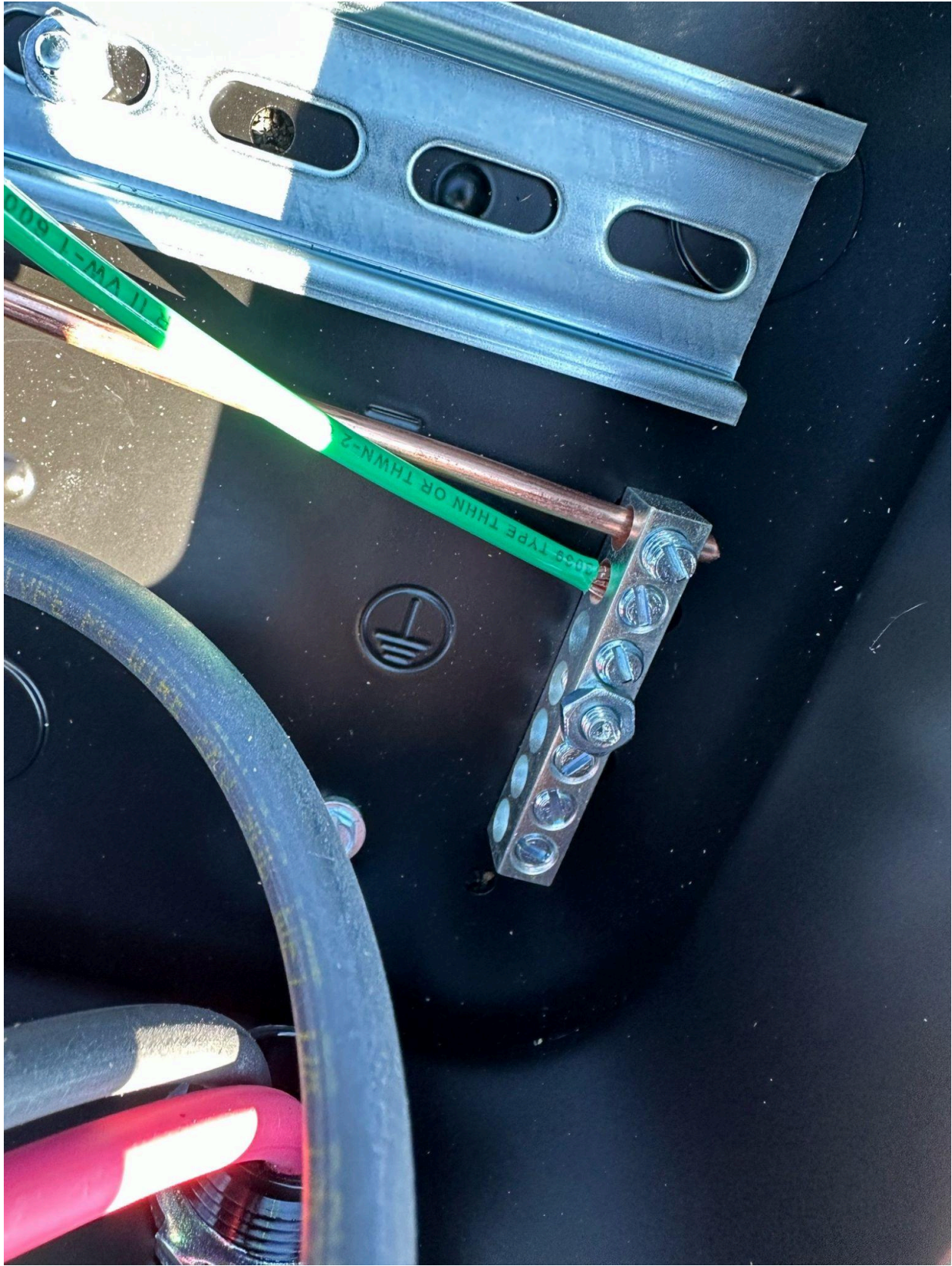
ASSEMBLED IN THE USA













Simpson, Nathan
360 Kotata Ave, Bunnlevel,
NC 28323



Photovoltaic Combiner/Enclosure Conforms to UL 1741; Certified to CSA C22.2 No. 290; Nema Type 3R

Q1 Q2 Q3 Q4 21 22 23 24
 0799 Series 0766-41AD

Max Ratings: 600 VDC/115 AMPS; 240 VAC/60 AMPS; Short circuit 10KA, Ambient Temp 75°C
Refer to the instruction manual for terminal torque information.

	⚠ WARNING HIGH VOLTAGE. KEEP OUT! RISK OF ELECTRICAL SHOCK. ONLY TRAINED SERVICE PERSONNEL ALLOWED ACCESS. SUITABLE FOR PHOTOVOLTAIC USE. APPROVED FOR USE WITH FIELD-INSTALLED CONDUCTORS SIZED FOR AN ALLOWABLE AMPLACITY OF 90 °C. AN EXTERNAL OUTPUT CIRCUIT DISCONNECTING MEANS SHALL BE PROVIDED WHEN REQUIRED BY THE CANADIAN ELECTRICAL CODE PART I. CAUTION: BEFORE SERVICING FUSES, DISCONNECT ALL PHOTOVOLTAIC INPUTS AND OUTPUT CIRCUITS. WARNING: MORE THAN ONE LINE CIRCUIT. SEE DIAGRAM. PLEASE CONSULT PAGE 5 OF MANUAL FOR COMBINER COMPONENT AND KIT RATINGS.	⚠ AVERTISSEMENT HAUTE TENSION, GARDEZ A L'ECART! RISQUE DE CHOC ELECTRIQUE. SEUL LE PERSONNEL DE SERVICE FORME A AUTORISE L'ACCES. CONVIENT A UNE UTILISATION PHOTOVOLTAIQUE. APPROUVE POUR UTILISATION AVEC DES CONDUCTEURS INSTALLES SUR LE TERRAIN DIMENSIONNES POUR UNE AMPLACITE ADMISSE DE 90 °C. UN MOYEN DE DECONNEXION DU CIRCUIT DE SORTIE EXTERNE DOIT ETRE FOURNI (CONCUT LA PARTIE I) DU CODE CANADIEN DE L'ELECTRICITE L'EXIGE. ATTENTION: AVANT D'ENTRETIENIR LES FUSIBLES, DEBRANCHEZ TOUTES LES ENTREES ET CIRCUITS DE SORTIE PHOTOVOLTAIQUES. AVERTISSEMENT: PLUS D'UN CIRCUIT EN DIRECT. VOIR DIAGRAMME. VEUILLEZ CONSULTER LA PAGE 5 DU MANUEL POUR LES EVALUATIONS DES COMPOSANTS ET DES KITS DE COMBINAISON.

R.S.T.C. Enterprises
Patent No.









