







**SILFAB SOLAR** SILFAB ELITE SIL-410 BG

Electrical Specification	Value
Maximum Power (P <sub>max</sub> )	410 Wp
Maximum Power Voltage (V <sub>mp</sub> )	38.28 V
Maximum Power Current (I <sub>mp</sub> )	10.71 A
Open Circuit Voltage (V <sub>oc</sub> )	48.00 V
Short Circuit Current (I <sub>sc</sub> )	11.00 A
Maximum System Voltage (V <sub>max</sub> )	600 V
Temperature Coefficient	-0.40 %/°C
Series Pass	3



Fire Rating: Class B




Conforms to UL Std. 6170  
Certified to CSA Std. 6170

TO DOWNLOAD INSTALLATION MANUAL  
OR DATASHEET, SCAN QR-CODE OR  
GO TO: WWW.SILFABSOLAR.COM  
Made in WA, USA



21 FAIRFIELD LN  
LILLINGTON NC 27546



**SILFAB**  
SOLAR®

**SILFAB ELITE**  
SIL-410 BG

**ELECTRICAL SPECIFICATIONS**

measured at Standard Test Conditions (STC):  
1000W/m<sup>2</sup> irradiance, AM1.5G spectrum, 25°C cell temperature

**CARACTÉRISTIQUES ÉLECTRIQUES**

mesurée dans des conditions d'essai normalisées:  
1000W/m<sup>2</sup> rayonnement, spectre de AM1.5G, température des cellules de 25°C

Maximum Power (P <sub>max</sub> ) Puissance Nominale Maximale	410	<sup>+10</sup> -0	W
Maximum Power Voltage (V <sub>pmax</sub> ) Tension en Fonctionnement Optimal	38.08	V	
Maximum Power Current (I <sub>pmax</sub> ) Courant en Fonctionnement Optimal	10.77	A	
Open Circuit Voltage (V <sub>oc</sub> ) Tension en Circuit Ouvert	45.92	V	
Short Circuit Current (I <sub>sc</sub> ) Intensité de Court-Circuit	11.30	A	
Maximum System Voltage Tension Maximale du Système	1000	V	
Series Fuse Série Fusible	20	A	
Fire Rating Classement au Feu	Type 1		



For field connections use min No. 12 AWG wires suitable for a climate of 90°C. Use copper wires only.  
Pour les connexions de terrain utilisez min 12 AWG res adapté aux pour un air de 90°C. Utilisez des fils de cuivre seulement.



Conforms to UL Std. 61730  
Certified to CSA Std. 61730

TO DOWNLOAD INSTALLATION MANUAL  
OR DATASHEET, SCAN QR-CODE OR  
GO TO: [WWW.SILFABSOLAR.COM](http://WWW.SILFABSOLAR.COM)



Made in WA, USA

21 FAIRFIELD LN  
LILLINGTON NC 27546



**ENPHASE**

**IQB+**

Grid Support Inverting Intermittent Inverter  
Microinverter Inverter

Parent Information: [www.enphase.com](http://www.enphase.com)

Output Power Factor: 1.00 (90-1)  
Rated Power Factor: 1.00  
Max. Input Current: 10.00 A  
Max. Input Voltage: 150 VDC  
AC Output Voltage: 120 VAC  
AC Output Current: 10.0 A  
All output frequency: 60 Hz  
All output phase: 120°  
Operating Temperature: -40°C to 105°C  
Storage Temperature: -40°C to 105°C  
Product Name: IQB+  
Model Number: IQB+  
UL 511E 1010-001 00100000

This device complies with part 15 of the FCC Rules. Operation is subject to the following two conditions: (1) This device may not cause harmful interference. (2) This device must accept any interference received, including interference that may cause undesired operation.



**WARNING:** ELECTRIC SHOCK HAZARD. DO NOT TOUCH THE INVERTER OR THE WIRING TERMINALS. AC AND DC VOLTAGE EXPOSURE TERMINATE UNDER THIS EQUIPMENT. PROTECTIVE GROUNDING IS REQUIRED BEFORE SERVICING. PHOTOVOLTAIC ARRAY SUPPLIES A DC VOLTAGE TO THE EQUIPMENT WHEN EXPOSED TO LIGHT. HOT SURFACES TO REDUCE THE RISK OF BURNS - DO NOT TOUCH.

**ATTENTION:** THESE SPECIFICATIONS ARE SUBJECT TO CHANGE WITHOUT NOTICE. ALL RIGHTS ARE RESERVED. THE USER SHALL BE RESPONSIBLE FOR THE PROPER INSTALLATION AND CONNECTION OF THE EQUIPMENT. THE USER SHALL BE RESPONSIBLE FOR THE PROPER CONNECTION OF THE EQUIPMENT TO THE PHOTOVOLTAIC ARRAY SUPPLY. THE USER SHALL BE RESPONSIBLE FOR THE PROPER CONNECTION OF THE EQUIPMENT TO THE PHOTOVOLTAIC ARRAY SUPPLY. THE USER SHALL BE RESPONSIBLE FOR THE PROPER CONNECTION OF THE EQUIPMENT TO THE PHOTOVOLTAIC ARRAY SUPPLY.

Made in the USA from imported parts

Galaxy A13 5G



*Galaxy A13 5G*



*Galaxy A13 5G*



*Galaxy A13 5G*





*Galaxy A13 5G*



*Galaxy A13 5G*



Galaxy A13 5G



*Galaxy A13 5G*



*Galaxy A13 5G*



*Galaxy A13 5G*



*Galaxy A13 5G*



*Galaxy A13 5G*























PEGASUS  
SOLAR

PEGASUS  
SOLAR



**ENPHASE.**

**IQ8+**

Grid Support Utility Interactive Inverter  
Multimode Inverter  
Patent information: <https://enphase.com/patents>

Off-grid Power Factor: -1 to 0 to +1  
Grid-tied Power Factor: +/- 0.99  
DC input range: 16-58 V<sub>DC</sub>  
Max. input short-circuit current: 25 A  
Max. input continuous current: 12 A  
AC output voltage: 240 V<sub>rms</sub>  
AC output current: 1.21 A  
AC output frequency: 60 Hz  
AC output power (max. continuous): 290 VA  
Operating temperature: -40 °C to +60 °C  
Ingress protection: NEMA Type 6  
Photovoltaic Rapid Shutdown Equipment  
NEC 690.12 and IEC 62109-1 Rule 64-218  
UL 1741 3rd Ed., incl. SB Compliant



This device complies with part 15 of the FCC Rules. Operation is subject to the following two conditions: (1) This device may not cause harmful interference. (2) This device must accept any interference received, including interference that may cause undesired operation.



**CAUTION: RISK OF SHOCK. WARRANTY VOID IF COVER REMOVED. NO USER SERVICEABLE PARTS INSIDE. REFER SERVICING TO QUALIFIED SERVICE PERSONNEL.**

**WARNING:** ELECTRIC SHOCK HAZARD. DC CONDUCTORS OF THIS PHOTOVOLTAIC SYSTEM ARE UNGROUNDING AND MAY BE ENERGIZED. AC AND DC VOLTAGE SOURCES TERMINATE INSIDE THIS EQUIPMENT. DISCONNECT BOTH BEFORE SERVICING. PHOTOVOLTAIC ARRAY SUPPLIES A DC VOLTAGE TO THIS EQUIPMENT WHEN EXPOSED TO LIGHT. HOT SURFACES. TO REDUCE THE RISK OF BURNS - DO NOT TOUCH.

**ATTENTION:** RISQUE D'ELECTROCUTION. LES CONDUCTEURS CC DE CE SYSTEME PHOTOVOLTAIQUE NE SONT PAS RELIES A LA TERRE ET PEUVENT ETRE SOUS TENSION. DES SOURCES DE TENSION CA ET CC SONT CONNECTEES A CET APPAREIL. ISOLER LES DEUX SOURCES AVANT TOUTE INTERVENTION. LES CABLES COURANT CONTINU SONT SOUS TENSION LORSQUE LE CHAMP PHOTOVOLTAIQUE EST EXPOSE A LA LUMIERE. RISQUE DE BRULURE. NE PAS TOUCHER.

Made in the USA from imported parts

Do not disconnect under load

011



UL  
CERTIFIED  
SAFETY US  
E486079

MFR-61







-B (UL) Type Dg 600V THHN/THWN-2 90C dry / wet 2/C 12AWG -40C oil res | sunlight resistant FTd SIMON ROHS

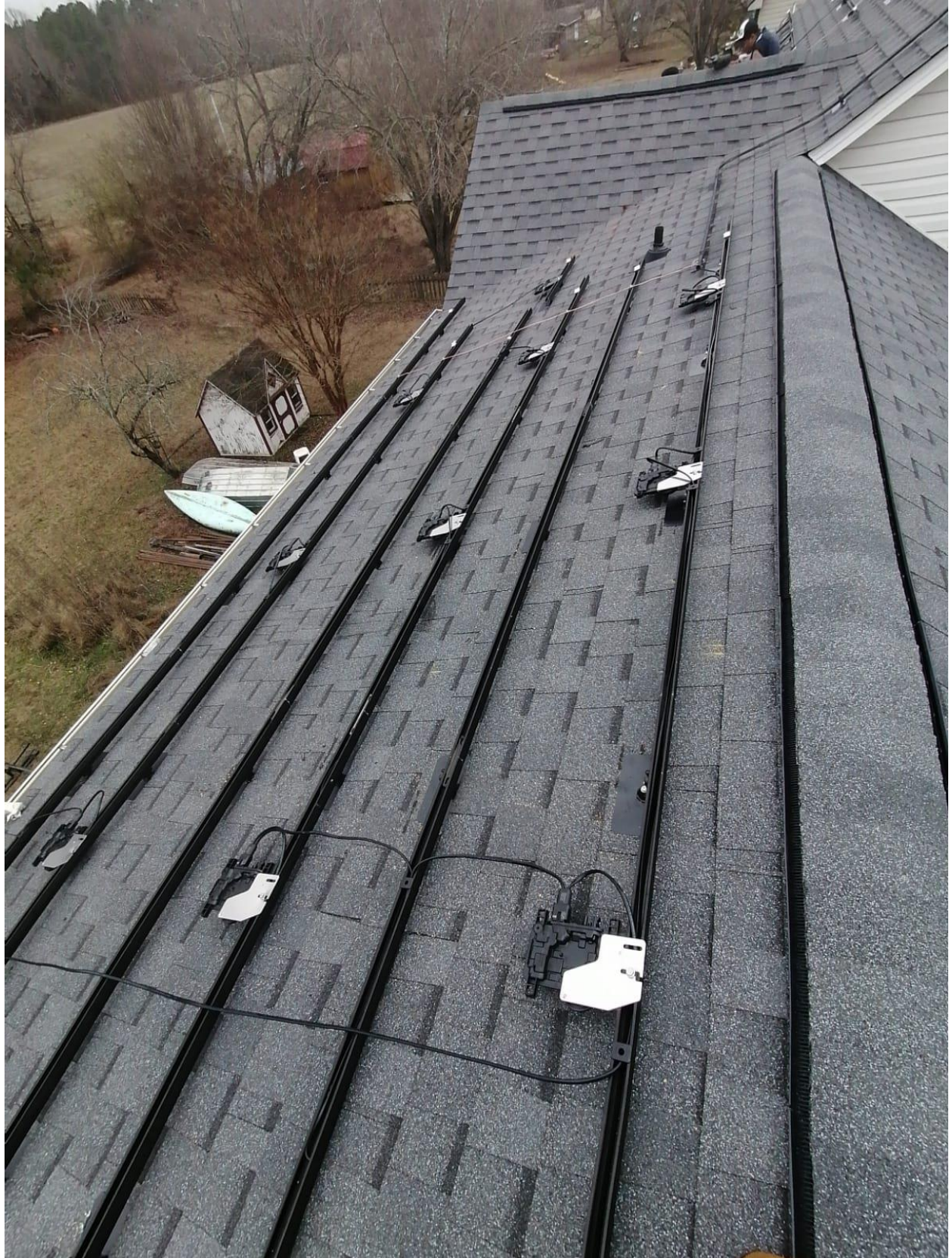


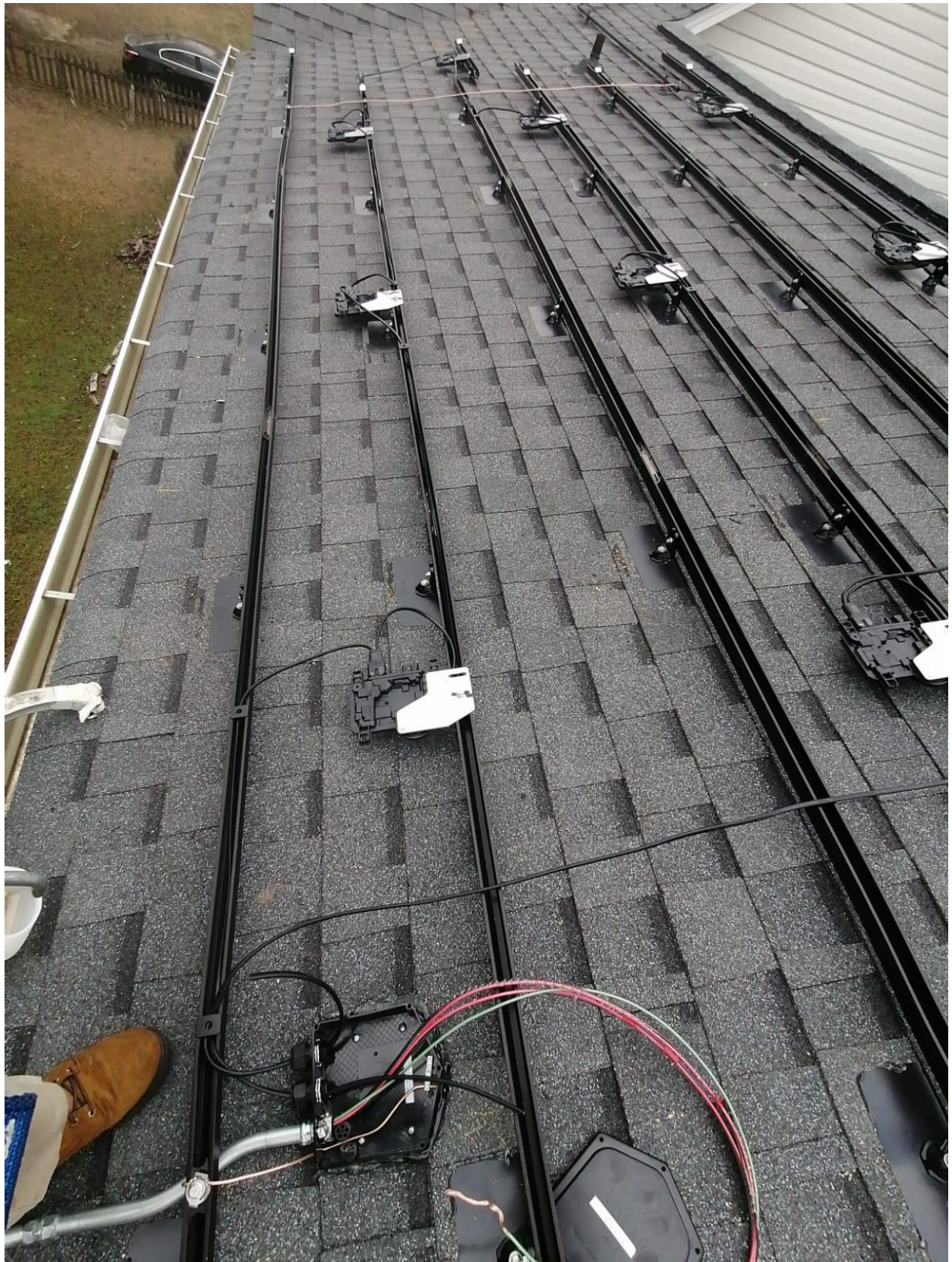






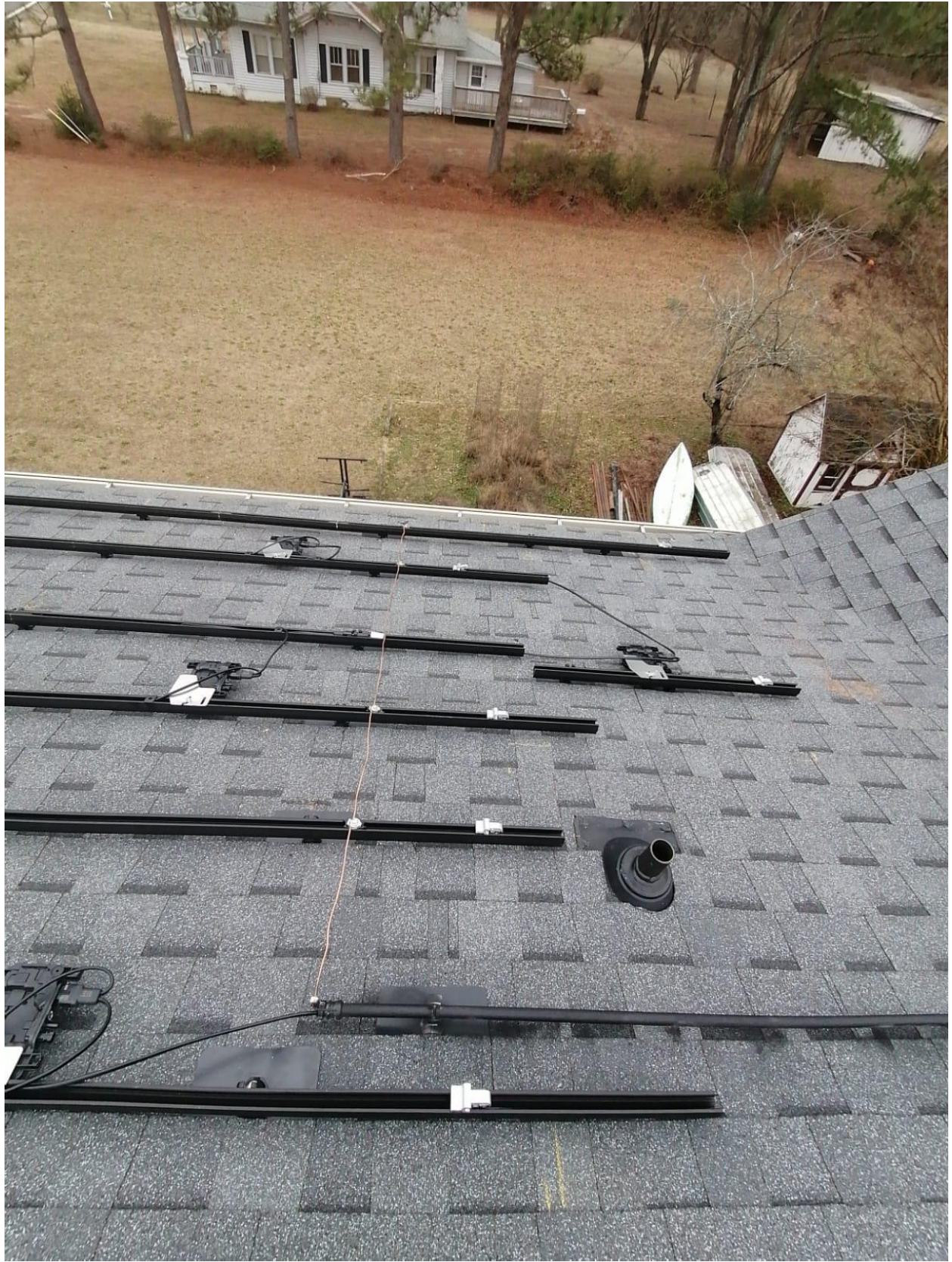


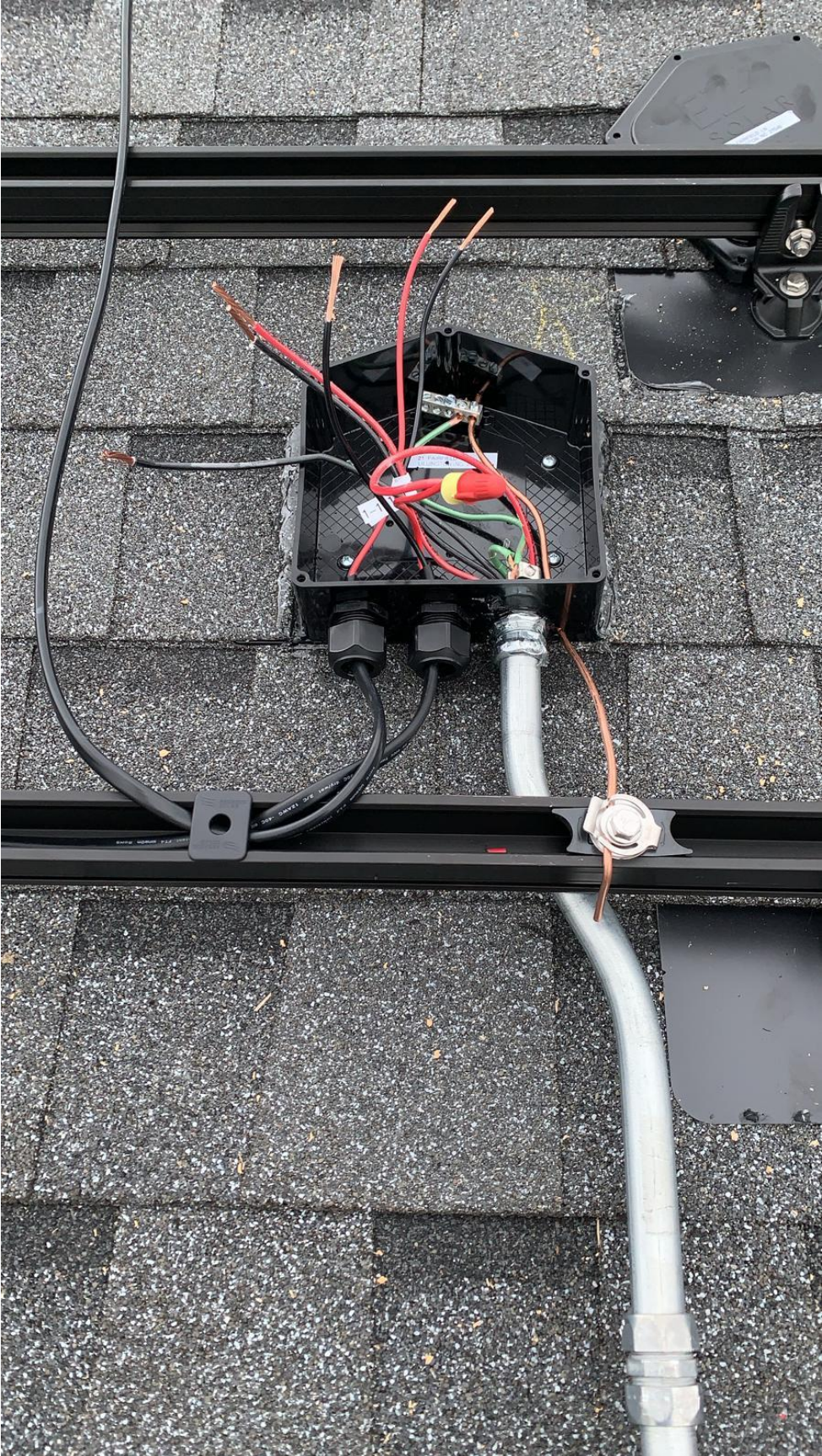




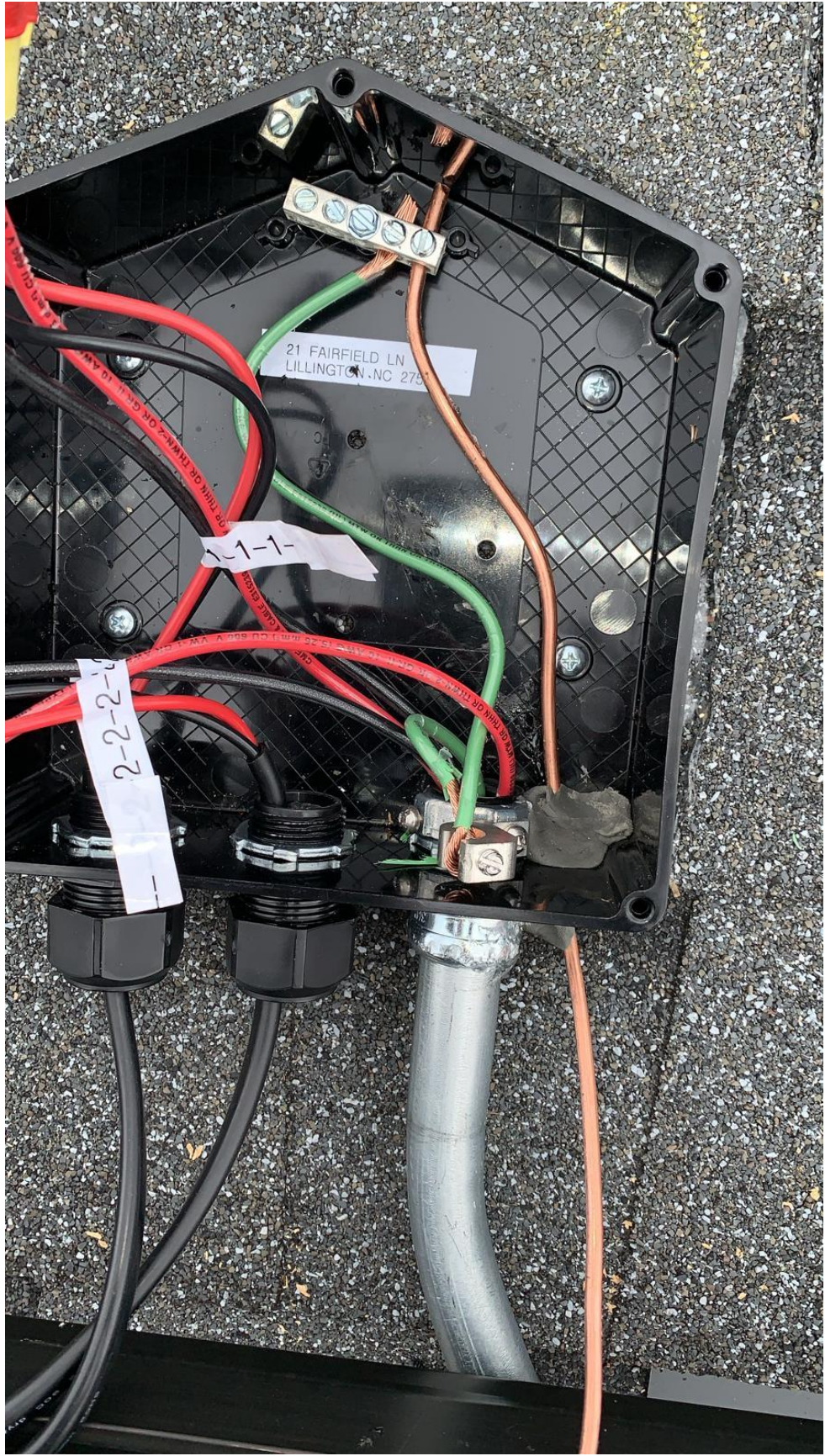








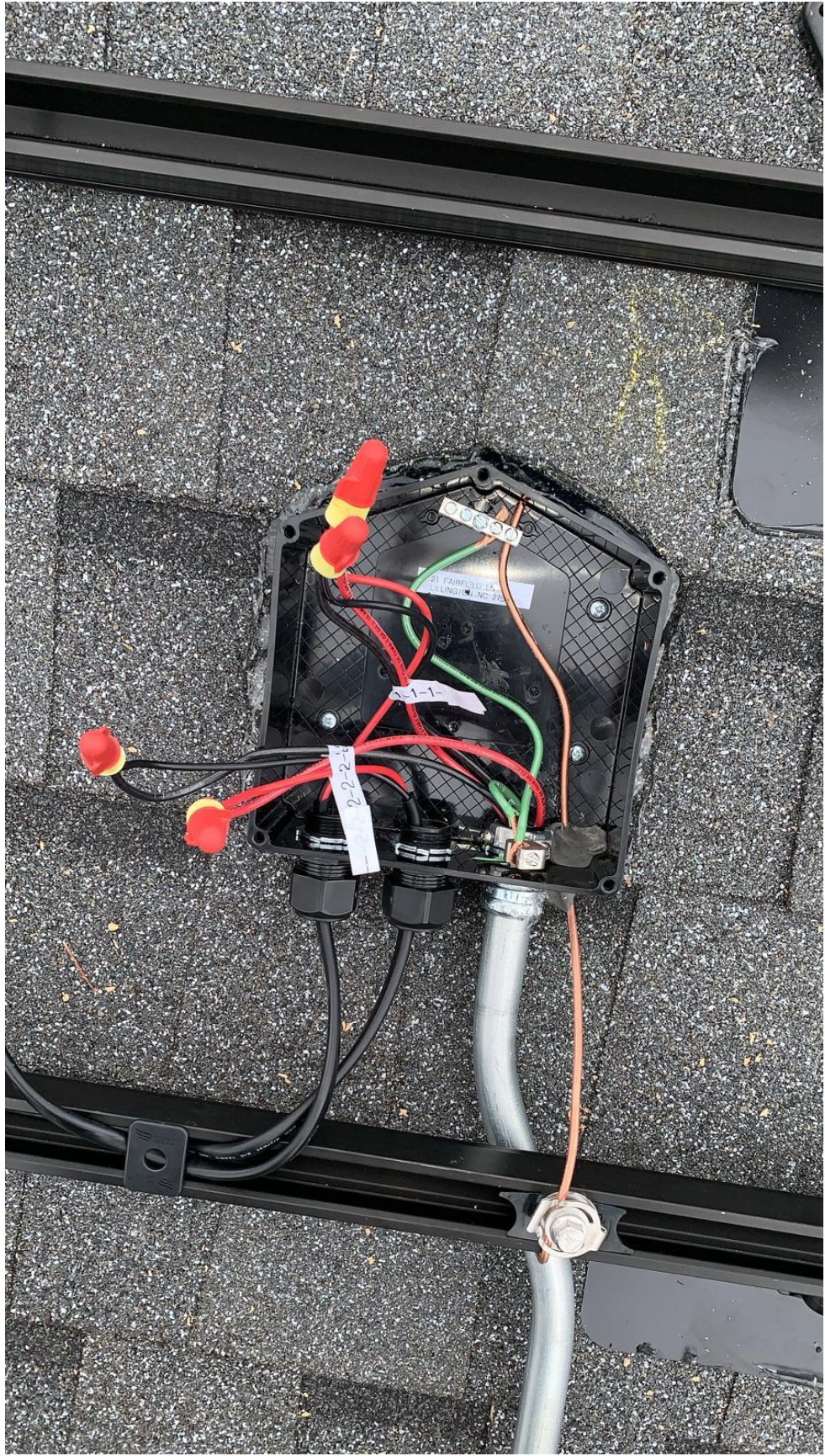




21 FAIRFIELD LN  
LILLINGTON, NC 275

1-1-1

2-2-2





21 FAIRFIELD LN  
LILLINGTON, NO. 27546

JB-112

© 2015 EZ4 SOLAR, INC. ALL RIGHTS RESERVED.



































