

325

Banks Rd

WOODGRAIN
FINISH
ALUMINUM
TRIM COIL
24" x 50"
PVC





203723254620103426

We aim for a greener tomorrow with completely clean energy solutions

Q.PEAK DUO BLK ML-G10+ 405

PERFORMANCE AT STANDARD TEST CONDITIONS*

Nominal Power* (+5W/-0W)	P _{MPP}	[W]	405
Short circuit current*	I _{SC}	[A]	11.20
Open circuit voltage*	V _{OC}	[V]	45.37
Current at maximum power	I _{MPP}	[A]	10.89
Voltage at maximum power	V _{MPP}	[V]	37.64
Maximum system voltage	V _{sys}	[V]	1000(IEC) 1000(UL)
Weight	M	[kg/lbs]	22.0 / 48.5

* Measurement tolerances: P_{MPP} ± 3%; I_{sc}, V_{oc} ± 5% at STC: 1000W/m², 25 ± 2°C, AM 1.5 according to IEC 60904-3. Data given are rated (nominal) values. IEC 61215:2016; IEC 61730:2016.



203723254620103426

Hanwha Q CELLS USA Inc.,
300 Nexus Drive, Dalton GA 30721, USA

Qcells

Assembled in USA



DANGER!
Risk of electric shock!
DO NOT connect or disconnect plug contacts while system is under load current. Refer to the Installation and Operation Manual before installing, operating or servicing this unit.

DANGER!
Risque de choc électrique!
NE PAS connecter ou déconnecter les connecteurs lorsque le système est en charge. Consultez le manuel d'installation et d'utilisation avant installation, utilisation et entretien du produit.

Fire Rating: Class C / Type 3
Fuse Rating: 30A

U.S. Patent No. 8,863,218
(solar cells)

EMAIL: sales@qcells.com
WEB: www.qcells.com

A photograph showing a section of a corrugated metal conduit installed in a wooden structure. The conduit is bent at a 90-degree angle. A red label with white text is wrapped around the straight section of the conduit. The label reads "WARNING: PHOTOVOLTAIC POWER SOURCE". The conduit is secured to a wooden beam with a metal clamp. The background consists of oriented strand board (OSB) sheathing and wooden joists.

**WARNING:
PHOTOVOLTAIC POWER SOURCE**





TESTED
WILL HOLD
03-21-23
CRISTAL HILL

SELF SPACING ON PROFILED EDGES.
DO NOT USE THIS PRODUCT AS STAPLE CORNER
THIS SIDE DOWN
ESTE LADO ARRIBA

SFI
Certified Sourcing
www.sfi.org
SFI-C00145

TS 2-10-1220
2/15 PERE
24/16 SIFERIN



Do not disconnect
under load

105°C DRY 90°C WET 1000V OR 2000V

440W/5-60V/15A
8-60V/14.5A

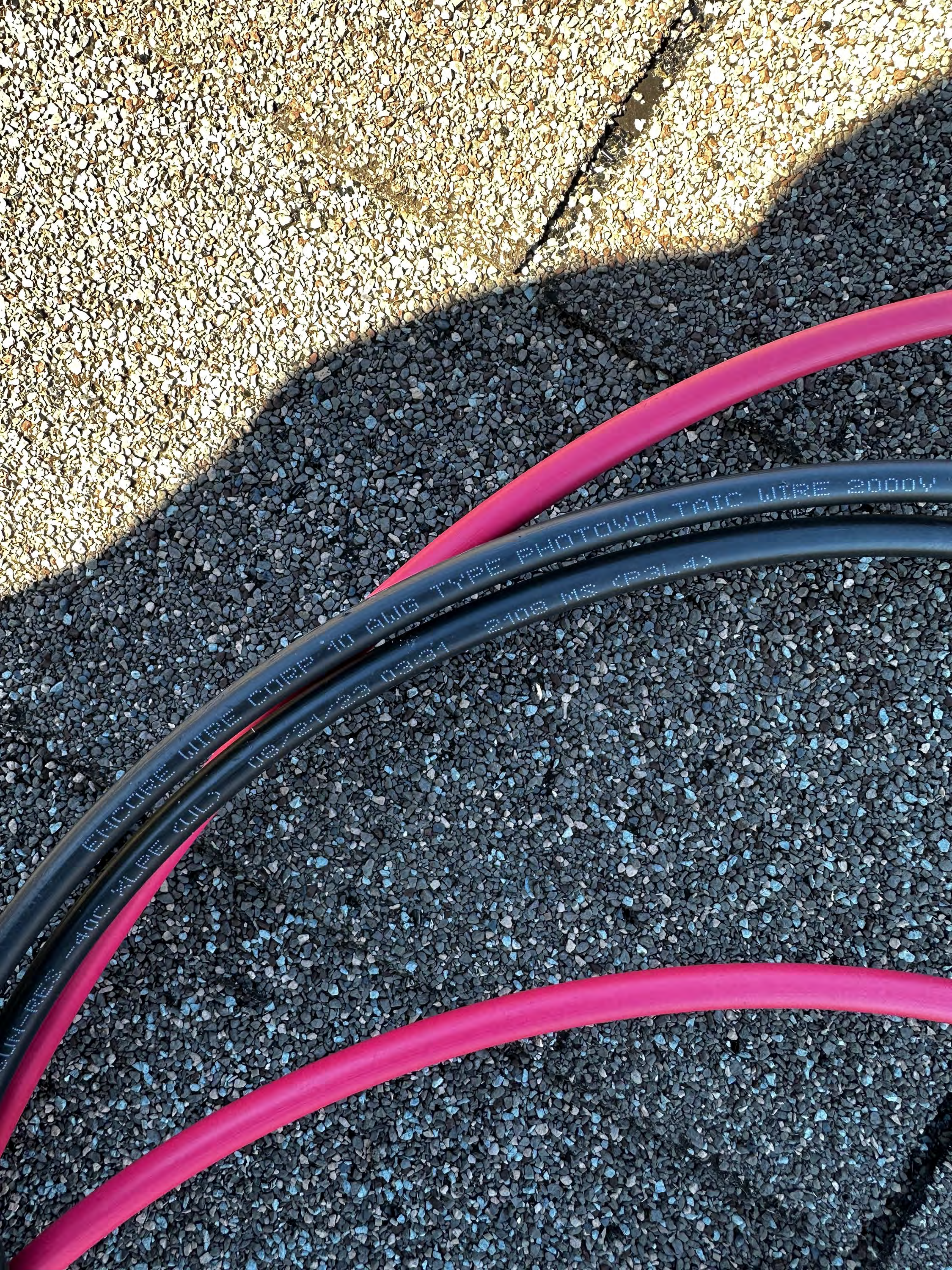
1V
SV3322A-015508B7B-6B
S440-1GM4MRM



NA02
Vietnam

MADE IN:





PHOTOVOLTAIC WIRE 2000V
TYPE 10 AWG
UL 100°C 100% CU
2108 MS CPA140

PHOTOVOLTAIC WIRE 2000V
TYPE 10 AWG
UL 100°C 100% CU
2108 MS CPA140





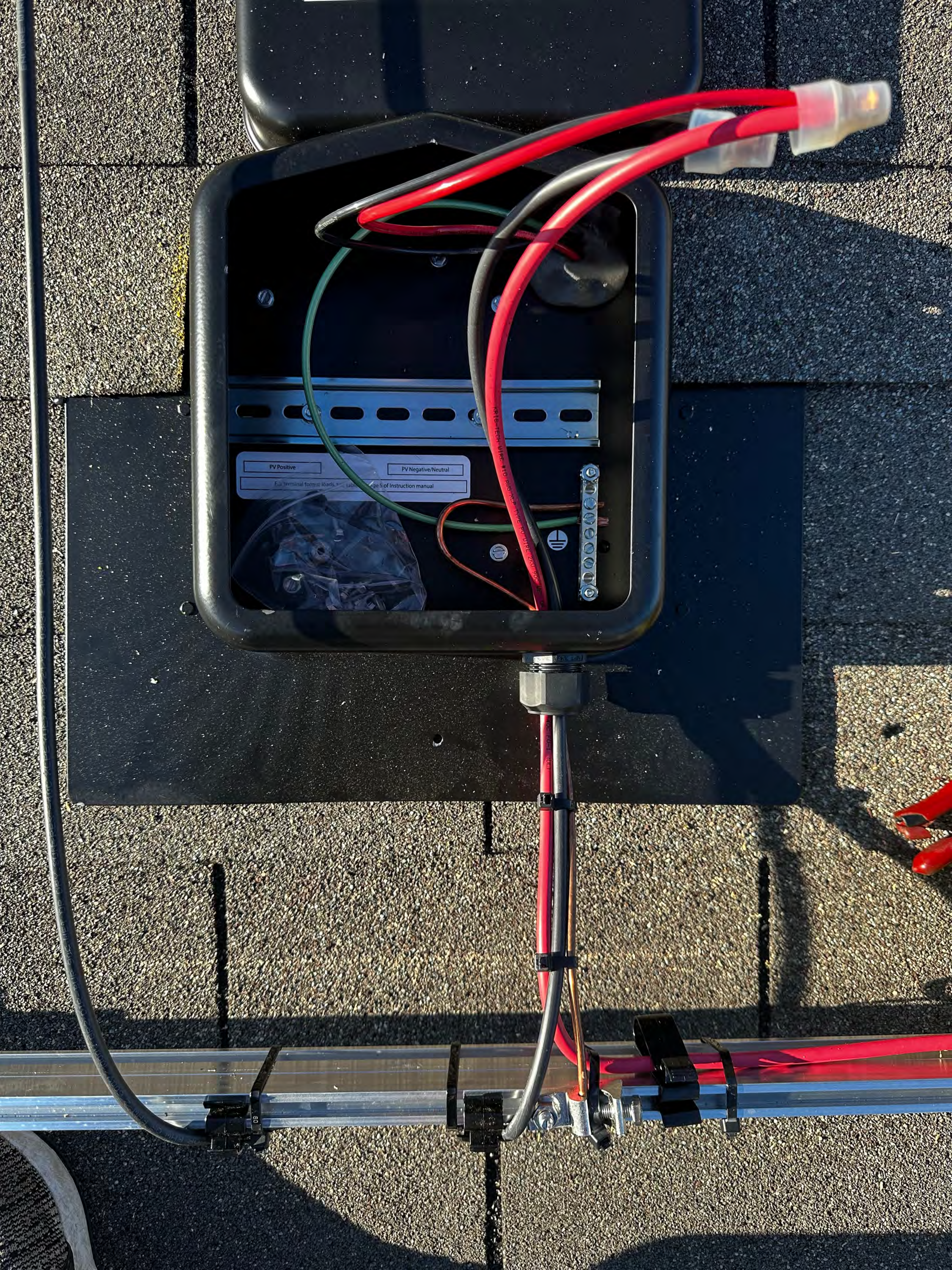








SOLADECK
WARNING
CAUTION
325 Coleshill Road Angier NC



PV Positive PV Negative/Neutral
For terminal for use loads, see page 5 of instruction manual

KRIS-TECH WIRE #10 RND W/P TYPE PV WIRE 200' 30C WIRE



SOLADECK
www.rscentgrains.com
UL Listed
3134037
Max Ratings: 600 VDC/115 AMPS, 240 VAC/60 AMPS, Short circuit: 10KA, Ambient Temp 75C
0799 Series
0766-41AD

WARNING	AVERTISSEMENT
 DANGER OF ELECTRIC SHOCK This device contains electrical components which may become energized during normal operation. To avoid electric shock, do not touch the internal components of this device. Only qualified personnel should be allowed to work on this device. Always use proper safety procedures when working with electrical equipment. For more information, see the instruction manual.	 DANGER DE CHOC ELECTRIQUE Cet appareil contient des composants électriques qui peuvent devenir sous tension pendant son fonctionnement normal. Pour éviter les chocs électriques, ne touchez pas les composants internes de cet appareil. Seul le personnel qualifié est autorisé à travailler sur cet appareil. Utilisez toujours les procédures de sécurité appropriées lorsqu'il s'agit de travailler avec des équipements électriques. Pour plus d'informations, consultez le manuel d'instructions.

325 Coleshill Road Angier NC



