





DEGREES



JOHNSON
Magnetic Protractor
Angle Locator

700

DEGREES



2

3

4

5

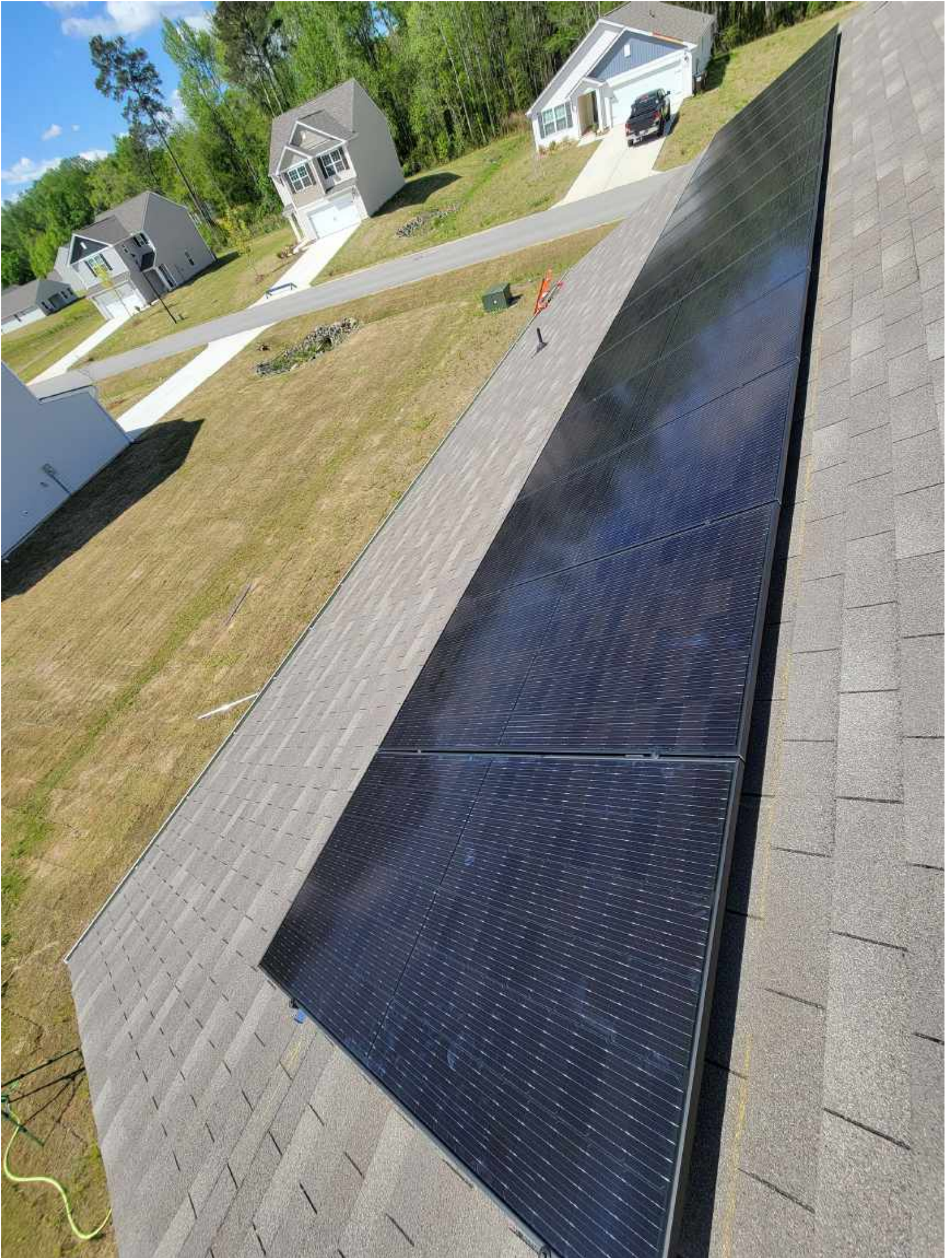
6

FT
25FT
IN

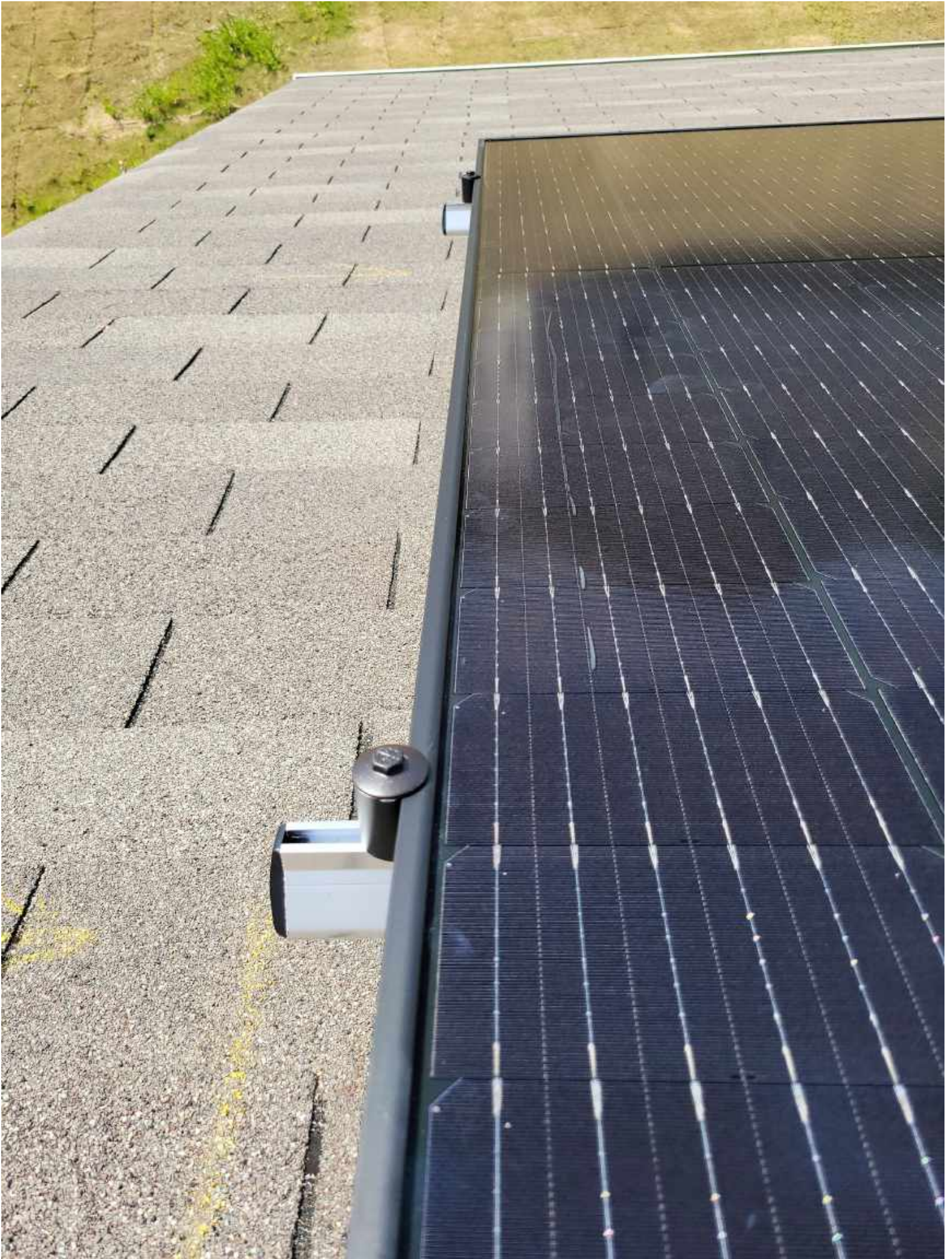
TOUGH
BLADE

KLEIN
TOOLS





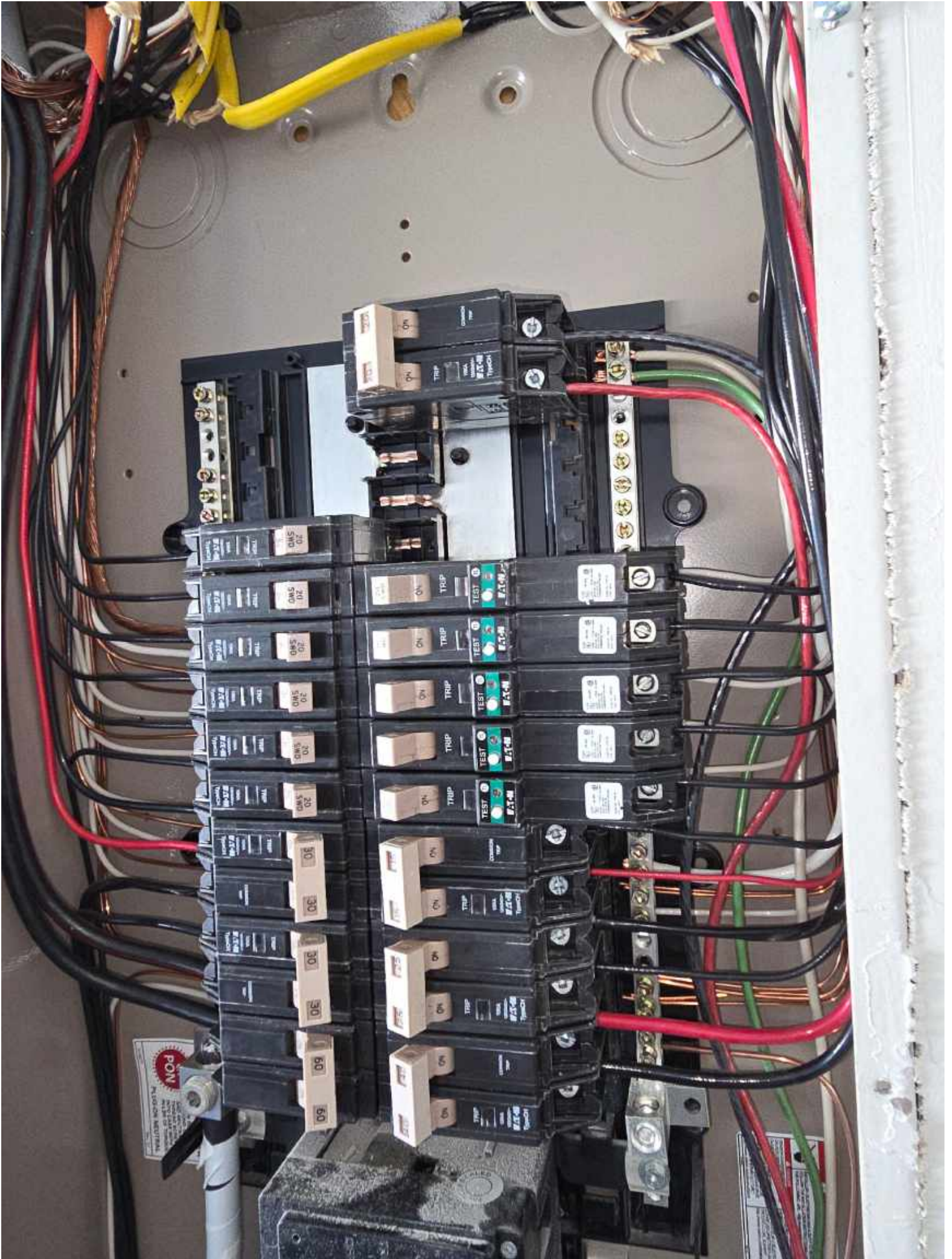




















180AAD5B-2A
Do Not Remove
ETP
INTERTEK
MUTUAL
SolarEdge Technologies Ltd.
SolarEdge Technologies GmbH/
Werner-Eckert-Straße 6/81829 Munich/Germany



SolarEdge Technologies Ltd.
Power Optimizer

Solarege Technologies GmbH/
Werner-Eckert-Straße 6/81829
Munich/Germany

CAUTION

HOT SURFACES TO REDUCE THE RISK OF BURNS-DO NOT TOUCH. RISK OF ELECTRIC SHOCK-WHEN THE PHOTOVOLTAIC ARRAY IS EXPOSED TO LIGHT, IT SUPPLIES A DC VOLTAGE TO EQUIPMENT. COVER PV MODULE WITH OPAQUE MATERIAL BEFORE CONNECTING OR DISCONNECTING THIS OPTIMIZER. DURING FAULT, ZERO CURRENT IS SOURCED INTO DC ARRAY BY CONVERTER.

WARNING ELECTRIC SHOCK HAZARD. THE DC CONDUCTORS OF THIS PHOTOVOLTAIC SYSTEM ARE UNGROUNDED AND MAY BE ENERGIZED.

AVERTISSEMENT

RISQUE DE CHOC ELECTRIQUE: QUAND LE CHAMP PHOTOVOLTAIQUE EST EXPOSE A LA LUMIERE, UNE TENSION CC EST FOURNIE A CET EQUIPEMENT. SURFACES CHAUDES: NE PAS TOUCHER, AFIN DE REDUIRE LES RISQUES DE BRULURES LE COURANT DE RETOUR INJECTE PAR LE CONVERTISSEUR EN CAS DE DEFAILLANCE DANS LE MODULE PV EST TOUJOURS NUL

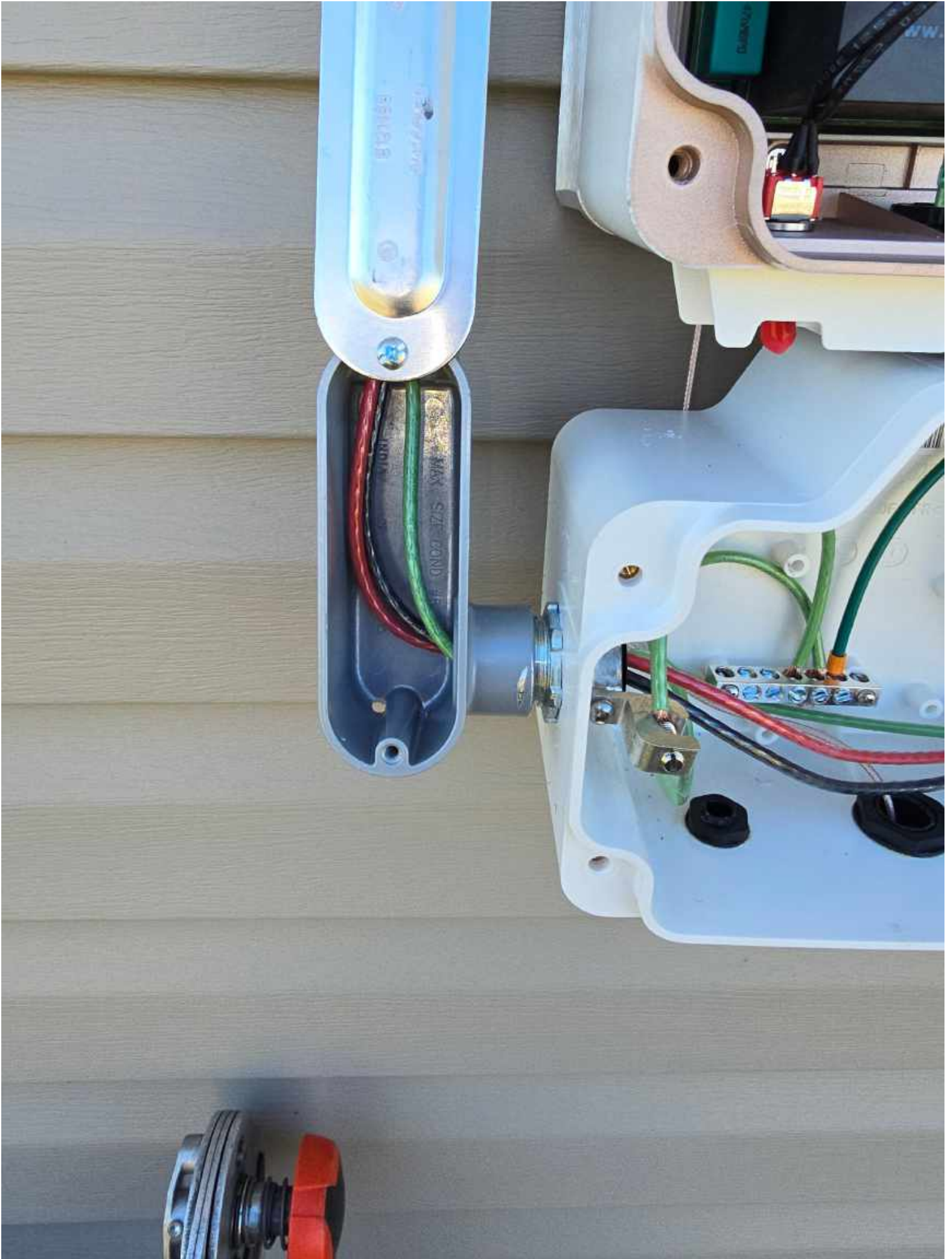


MODULE

STRING

and 90°C

STOP



solar**edge**

HD wave





Joseph Fish
102 Cheskill Rd
Angier, NC 27501





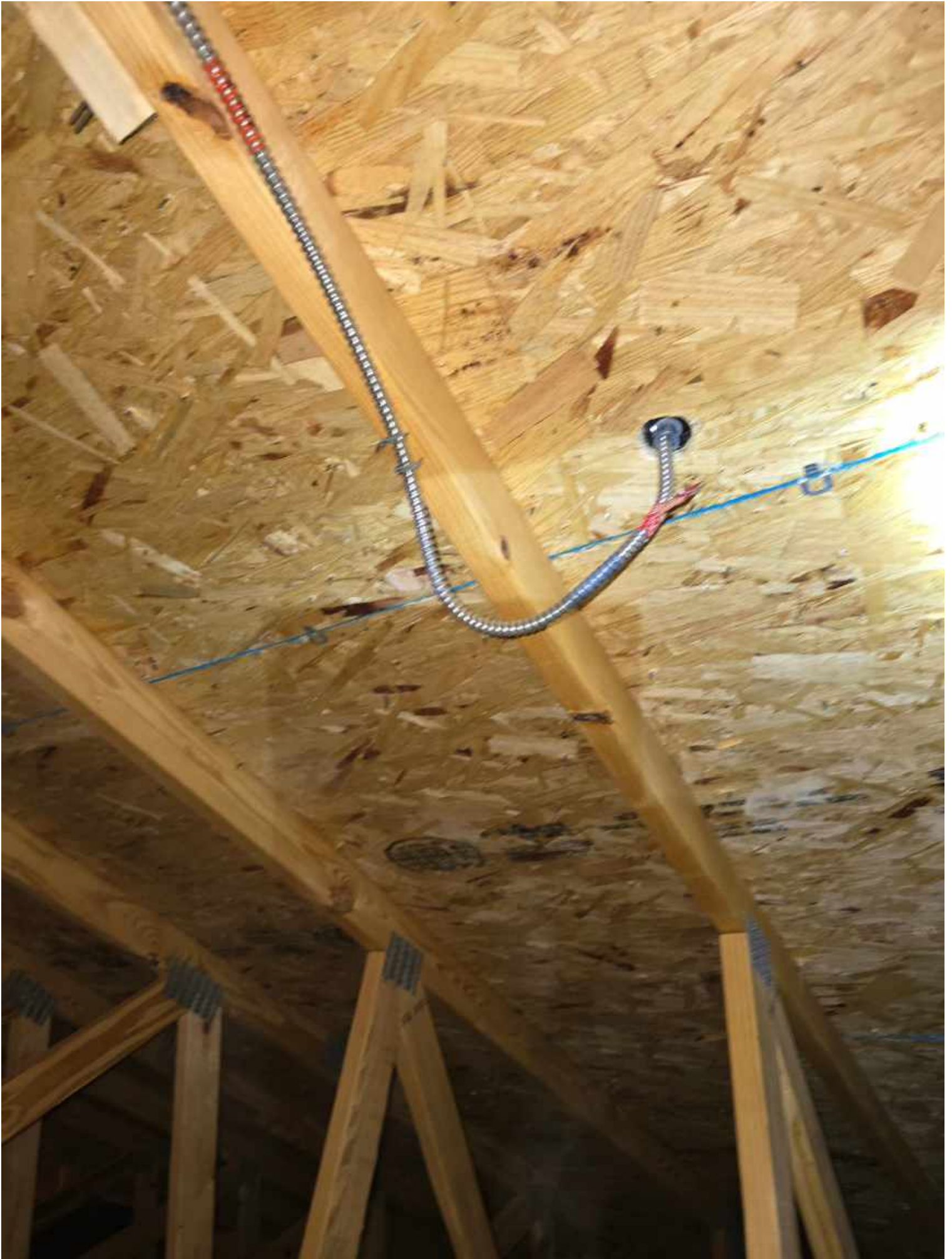
TTUW/3-00V/13A
8-60V/14.5A
Open Circuit Voltage: 1V
NA02
Mexico

SM3123-0180AAD5B-2A
S440-1GM4MRM











**WARNING: PHOTOVOLTAIC
POWER SOURCE**

16

16



