



MISSION SOLAR ENERGY Serial No. **M230509-A0733**

Model Number	MSE2888X6
Rated Maximum Power	[W] 384 (0.974)
Open-Circuit Voltage	[V] 46.2
Voltage @ Pmax	[V] 37.5
Short-Circuit Current	[A] 10.24
Current at Pmax	[A] 10.88
Max. System Voltage	[V] 1500

Max. Series overcurrent protective device (where required) fuse rating: [A] 20
Standard test condition: AM1.5 Ex1000W/m² Tc=25°C

For field connections, use Co only (L848E US, CANADA, 480V 27A) and when installed for a maximum of 8°C, used for wet conditions and exposed to ultraviolet radiation (where exposed). See installation manual for PV connector details and compatibility. *Assemblage respectez des choix détaillés. Ce module produit des tensions élevées dans le branchement à l'air. Respectez électriquement les choix. Ne pas installer en humide. Ne pas installer à l'air.*

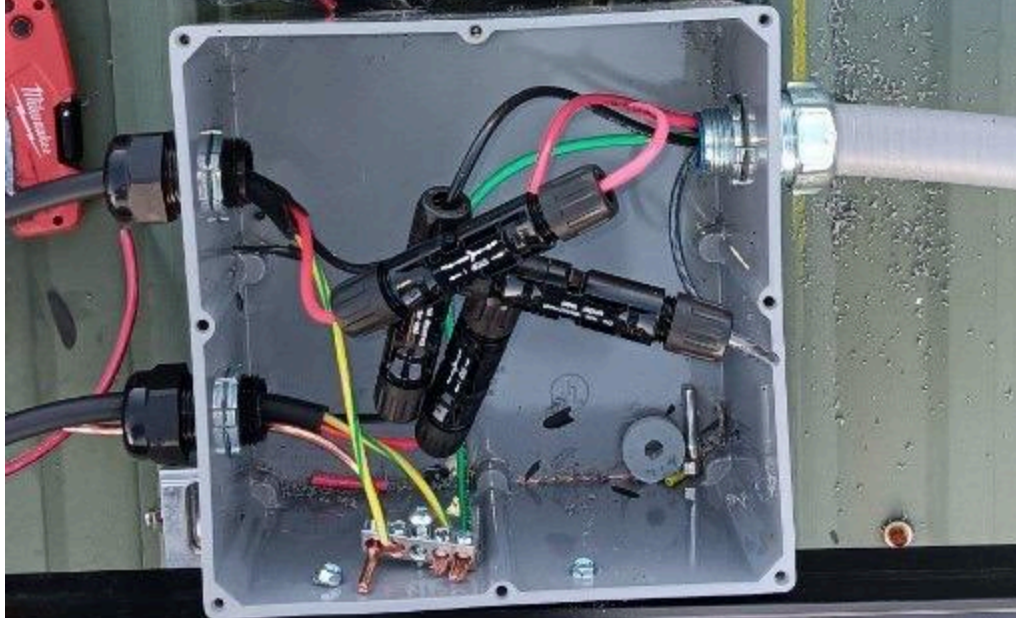
Fire Rating: Type 1
Class of Equipment: Class B
Cable Load: Minimum 3000 Pa front and minimum 1400 Pa back load

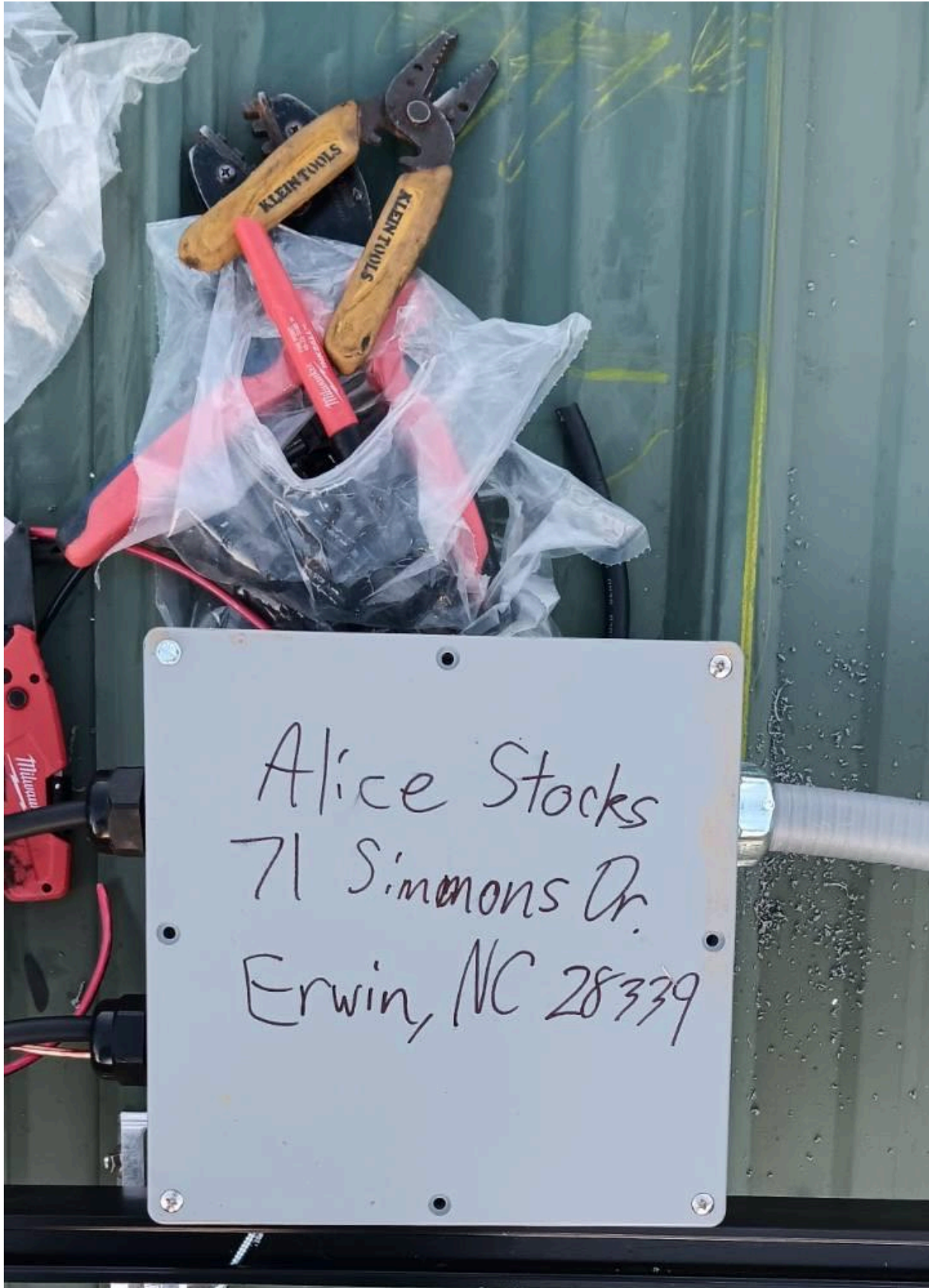
Warning: PV modules generate voltage even with very weak light. Do not open the junction box or modules if production tension values are listed inside. *Ne pas ouvrir la boîte de jonction.*

Address: 8303 S. New Brunfels Ave., San Antonio, TX 78235
ASSEMBLED IN THE USA



Alice Stocks
71 Simmons Dr.
Erwin, NC 28339





Alice Stocks
71 Simmonons Dr.
Erwin, NC 28339







Alice Stocks
71 Simmonons Dr.
Erwin, NC 28339

