



CAUTION

The Power Optimizer module is a high-voltage device. It is not safe to touch the module or its components when the solar panel is connected to the power source. The module is designed to protect the solar panel from damage caused by lightning strikes. It is important to follow the instructions provided in the user manual. Do not touch the module or its components when the solar panel is connected to the power source. The module is designed to protect the solar panel from damage caused by lightning strikes. It is important to follow the instructions provided in the user manual.

WARNING ELECTRIC SHOCK HAZARD. THE DC CONDUCTORS OF THIS PRODUCT ARE NOT INSULATED. DO NOT TOUCH THE DC CONDUCTORS OF THIS PRODUCT.

AVERTISSEMENT

Le module de l'optimiseur de puissance est un dispositif à haute tension. Il n'est pas sûr de toucher le module ou ses composants lorsque le panneau solaire est connecté à la source d'alimentation. Le module est conçu pour protéger le panneau solaire contre les dommages causés par les éclairs. Il est important de suivre les instructions fournies dans le manuel de l'utilisateur. Ne touchez pas le module ou ses composants lorsque le panneau solaire est connecté à la source d'alimentation. Le module est conçu pour protéger le panneau solaire contre les dommages causés par les éclairs. Il est important de suivre les instructions fournies dans le manuel de l'utilisateur.



MODULE











3128

MISSION SOLAR ENERGY Serial No. **M230913-B0404**

Model Number	MSE365XMR
Rated Maximum Power	[P] 266 (-2/+5%)
Open - Circuit Voltage	[V] 46.2
Voltage at Pmax	[V] 37.0
Short - Circuit Current	[A] 11.24
Current at Pmax	[A] 10.88
Max. System Voltage	[V] 1000
Max. Series overcurrent protective device (where required) Fuse rating	[A] 20
Standard test condition	AM-1.5 E=1000W/m ² T=25°C

For field connections, use Co-ord. 1384FF (U.S., CANADA), 4mm² (EU, Asia) wires installed for a minimum of 90°C, rated for wet conditions and resistant to ultra violet radiation (where exposed). See installation manual for PV connector details and compatibility. **Attention: Risque de choc électrique. Ce module produit des tensions élevées dans la lumière du soleil. Risque électrique peut choquer, brûler ou de provoquer la mort. Ne pas toucher la borne.**

Fire Rating - Type 1
Class of Equipment: Class II
Design Load: Minimum 1600 Pa front and minimum 1500 Pa back load

Warning: PV modules generate voltage even with very weak light. Do not open the junction box. Les modules PV produisent tension même en basse lumière. Ne pas ouvrir la boîte de jonction.

Address: 8303 S. New Braunfels Ave. San Antonio, TX 78235
ASSEMBLED IN THE USA

01808013-01 Do Not Remove 18065013-01

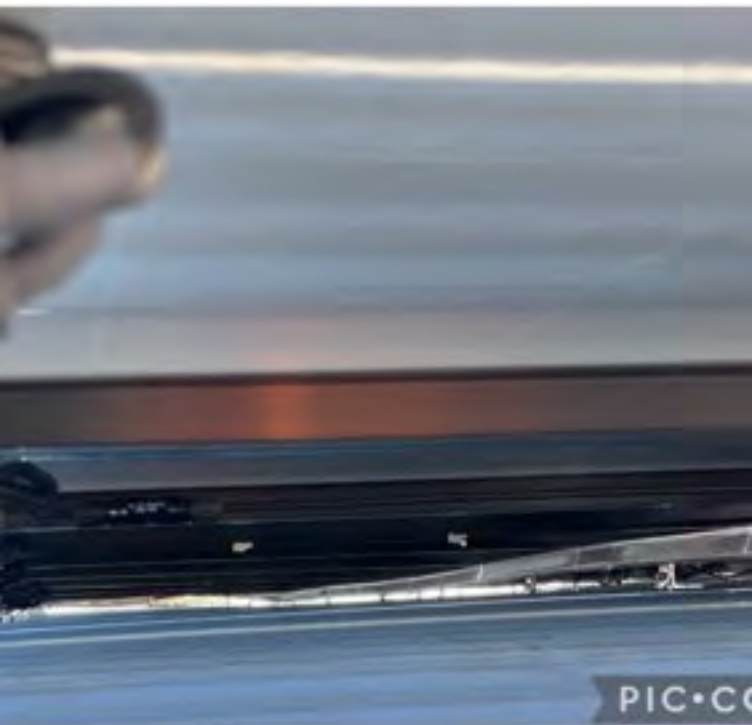
SolarEdge Technologies Ltd
SolarEdge Technologies GmbH
Werner-Locher-Straße 6/18279
Munich/Germany

CAUTION
HOT SURFACES TO REDUCE THE RISK OF BURNS DO NOT TOUCH. RISK OF ELECTRIC SHOCK WHEN THE PHOTOVOLTAIC ARRAY IS EXPOSED TO LIGHT, IT SUPPLIES A DC VOLTAGE TO EQUIPMENT. COVER PV MODULES WITH OPAQUE MATERIAL BEFORE CONNECTING OR DISCONNECTING THIS OPTIMIZER. DURING FAULT, ZERO CURRENT IS SOURCED INTO DC ARRAY BY CONVERTER.

WARNING ELECTRIC SHOCK HAZARD. THE DC CONDUCTORS OF THIS PHOTOVOLTAIC SYSTEM ARE UNGROUNDED AND MAY BE ENERGIZED.

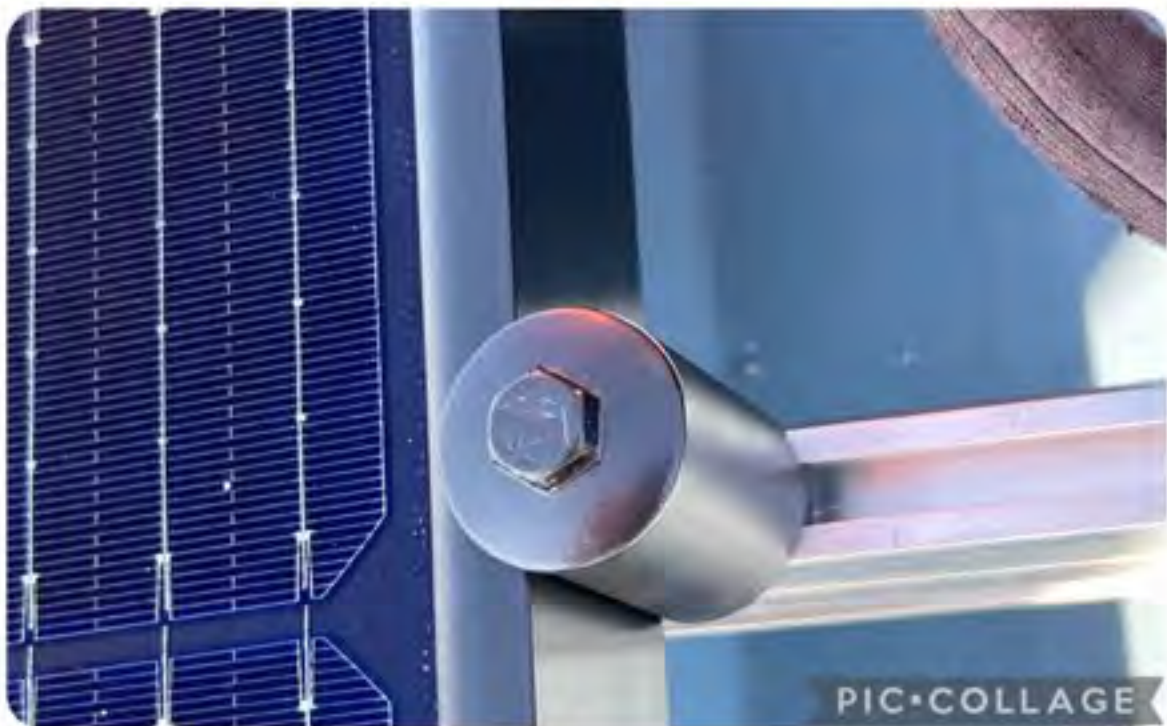
AVERTISSEMENT
RISQUE DE CHOC ÉLECTRIQUE. QUAND LE CHAMP PHOTOVOLTAÏQUE EST EXPOSÉ À LA LUMIÈRE, UNE TENSION CC EST FOURNIE À CET ÉQUIPEMENT. SURFACES CHAUDES. NE PAS TOUCHER, AFIN DE RÉDUIRE LES RISQUES DE BRÛLURES LE COURANT DE RETOUR INJECTÉ PAR LE CONVERTISSEUR EN CAS DE DÉFAILLANCE DANS LE MODULE PV EST TOUJOURS NUL.













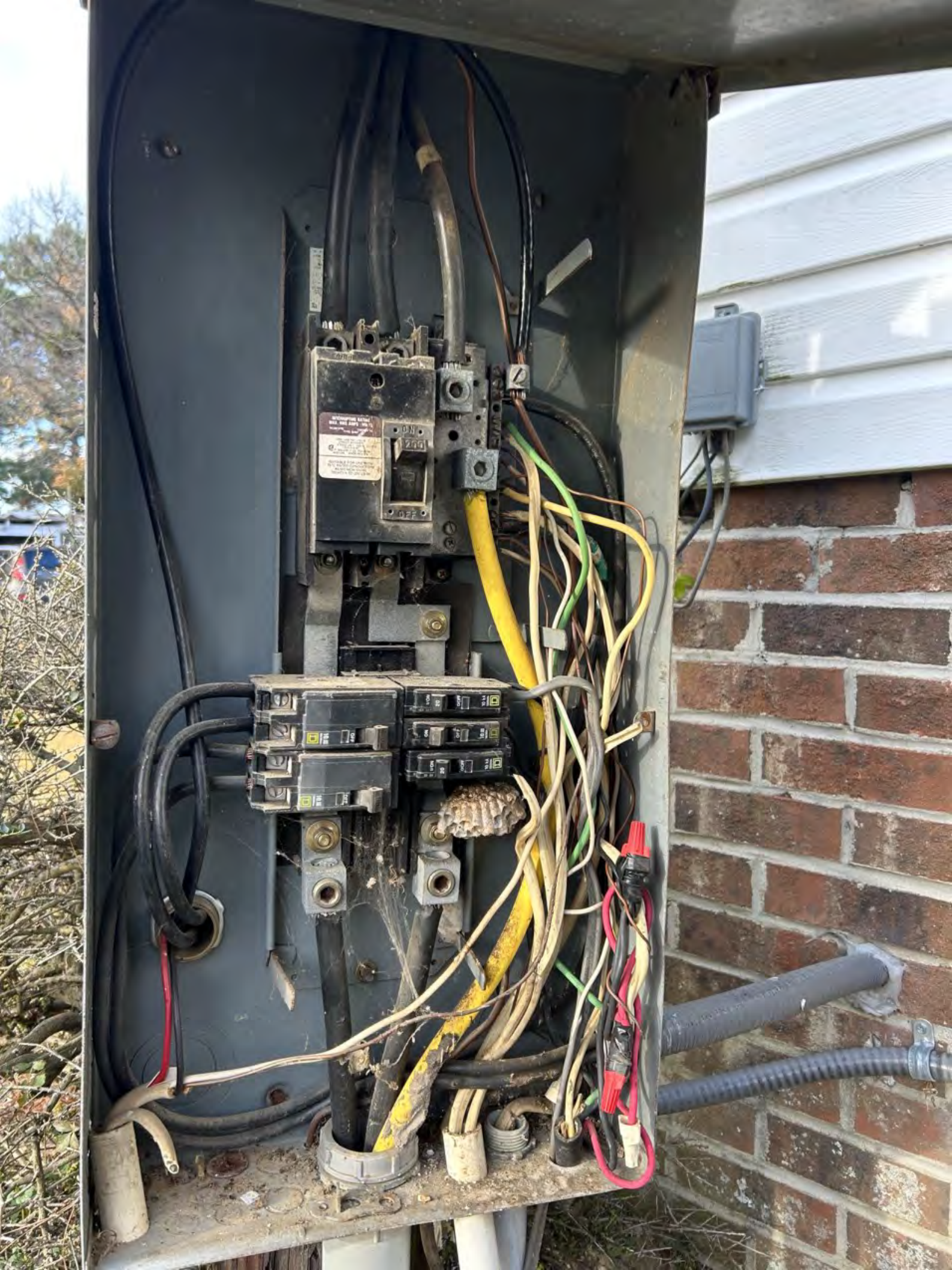
Cam Grantham
3128 Ashe Ave,
Dunn, NC 28334
37 Panels

S.1 Red 13 Panels	S.2 Yellow 12 Panels
S.3 Blue 12 Panels	

CAUTION
DO NOT ATTEMPT TO REPAIR OR
REPLACE THE
RISK OF BURNS AND ELECTRIC SHOCK.
AVERTISSEMENT
NE PAS TENTER DE RÉPARER NI
REMPLACER LES
RISQUE DE BRÛLURES ET DE CHOC ÉLECTRIQUE.

1/2" 300V RES - MADE IN USA





07E-01

INTERRUPTING RATING
MAX. RMS AMPS VOLTS

14800000	TYPE UNIT
100	100

UNO LAB. INC. LISTED
CIRCUIT BREAKERS
3 POLE UNIT 100-150 LL5210
100-150 W-100
P. SQUARE D CO. PLANT 14
800106 MADE IN U.S.A.

SUITABLE FOR USE WITH
75°C RATED CONDUCTORS
#4-300 MCM CU/AL
TIGHTEN TO 250 LB IN

ON

200

OFF

100

OFF

NO

ON

20

OFF

10 KA

ON

20

OFF

10 KA

CARWIRE AL 4 AWG TYPE USE OR RWG OF R411 600V (100)

100



MAIN

A
Behind
Sub Panels











solaredge

StorEdge Connection Unit



Max DC Voltage (PV/Battery)	480 Vdc
Max DC Current (PV)	62 Adc
Max DC Power (PV)	23.2 kWdc
Max Continuous DC Current (Battery)	31 Adc
Max Continuous DC Power (Battery)	11.6 kWdc
Max AC Voltage	264 Vac
AC-Single Phase Frequency	50/60 Hz
Max AC Current (Grid)	48 Aac

For more details refer to the installation guide

Patent marketing notice: see WWW.SOLAREEDGE.COM/patent

DCD-1PH-US-P2H-F-I

PN:

SJ1323-191218182-B5

SN:

Made in China



Intertek
4004590



solaredge

StorEdge Connection Unit



Max AC Current (Smart EV Charger)	40 Aac
Max Continuous Output Power (Smart EV Charger)	9600 W
Max Battery Energy Storage	32 kWh
Number of AC phases	L1, L2, N
Maximum AC short circuit current	74 Aac
Weight	30.2 / 13.7 lbs/kg
Ambient Temperature:	-40°C ..60°C
Enclosure Rating:	IP65/ Type 4X

For more details refer to the installation guide

Patent marketing notice: see WWW.SOLAREEDGE.COM/patent

Use 90°C copper PV wires only.

Revenue Grade ANSI C12.20

PHOTOVOLTAIC RAPID SHUTDOWN SYSTEM

DCD-1PH-US-P2H-F-I

PN:

SJ1323-191218182-B5

SN:

Made in China



Intertek
4004590



solar edge SE11400H - US
**Grid Support Utility Interactive
 Non-Isolated Photovoltaic Inverter**
 Operating Voltage Range 360 - 480Vac
 Max Input Current 30Acs
 Max Continuous Output Power 30Acs
 Voltage Min - Nom - Max 1000VMax @ 200V 11400WMax @ 240V
 183 - 208 - 220VAc
 211 - 240 - 264VAc
 Max Continuous Output Current 48.5Aac @ 200V 47.5Aac @ 240V
 Max Output Fault Current 74Aac
 Max Utility Backfeed Current 5Aac
 Frequency Min - Nom - Max 50.3 - 60.0 - 60.5Hz
 Output Power Factor +/- 0.85 - 1
 Max Ambient Temperature 60 C
 Enclosure IP66 / Type 3R
 With integrated ground fault protection per NEC 830.35 (c)
 Type 1 Photovoltaic Arc-Fault Circuit Interrupter
 Wi-Fi Password: Cy2a48BY
 Activation: Lvd M8U Xmi3 jJ+ ABoU Kb83 yH-
 WIFI MAC: B4:DE:CS:4D:1B:A5
 ZigBee MAC:



PN: SE11400H - USSNBBL15
 SN: SJ1223 - 0741990BE - DB

solar edge
**PHOTOVOLTAIC RAPID
 SHUTDOWN SYSTEM**

solar edge 741990BE-DB
 ETL LISTED
 CONFORMS TO
 ANSI/UL 1741
 CERTIFIED TO
 CAN/CSA
 C22.70.01
 Intertek
 4004590
 Contains FCC ID 2AGP7-PLNK, IC 20816-PNLK. The enclosed device complies with part 15 of the FCC Rules. Operation is subject to the following two conditions: (1) This device may not cause harmful interference and (2) This device must accept any interference received, including interference that may cause undesired operation.
 www.solar-edge.com
 MADE IN CHINA



CAUTION: SOLAR ELECTRIC
SYSTEM CONNECTED



WARNING
DUAL POWER SUPPLY
SOURCES: UTILITY GRID
AND PV SOLAR
ELECTRIC SYSTEM

PHOTOVOLTAIC
SYSTEM kWh METER

MILGANN





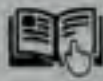
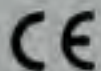
solar**edge**



BAT-10K1P

Nominal Energy	9.7 kWh
Rated capacity	94Ah
Output Voltage (Min-Nom-Max)	350-400-450 Vdc
Continuous Output Power	5.0 kWdc
Max Continuous Output current	14.3 Adc
Peak Output Power in Backup / duration	7.5 / 10 kWdc / sec
Max short circuit current / duration	1k / 10 Adc / msec
Enclosure	NEMA 3R / IP55
Operating Temperature Range	- 10°C to +50°C
Storage Temperature Range	- 30°C to +60°C
Battery Designation	ICP/46/174/134/[1P30S]E/-10+50/95

Li Ion rechargeable battery



P/N: BAT-10K1PS0B-02



SN: SZ5222-06307DF28-71



4004590



OFF/O
EATON
Type BR260
Type C260
120/240 V -
Circuit
HACR Type
2 Pole J-660
E7318 - T
LR43556 Disj.
UL LISTED

60

OFF/O
Common Trip

60

OFF/O
EATON
SR-515
DINEL1515
Type BRD, A & DIN-UL
120/240 V -
Circuit
HACR Type
2 Pole Unit J-660
E7318 - T
LR43556 Disj.
UL LISTED

On/1
15

OFF/O

On/1
15

15

AWG 10

TYPE 100 NYLON OR F1175 F1175

TYPE 100 NYLON OR F1175 F1175

TYPE 100 NYLON OR F1175 F1175

TYPE 100 NYLON OR F1175 F1175

TYPE 100 NYLON OR F1175 F1175

TYPE 100 NYLON OR F1175 F1175

TYPE 100 NYLON OR F1175 F1175

EATON®


General Duty Safety Switch
Interrupteur de sécurité à usage général
Interruptor de seguridad de servicio general

60 A, 240 V~, 60 Hz

Complete ratings inside
Valeurs nominales complètes à l'intérieur
Información completa de capacidades en el interior

Further instructions inside
Autres instructions à l'intérieur
Instrucciones adicionales en el interior

Made in U.S.A. / Fabriqué aux É.-U. / Hecho en E.U.A.



⚠ DANGER
HAZARDOUS VOLTAGE. WILL CAUSE SEVERE INJURY OR DEATH.
• Never operate switch with cover open.
• Turn OFF power ahead of switch before doing any work inside. Replace all parts. Close cover before turning power ON.

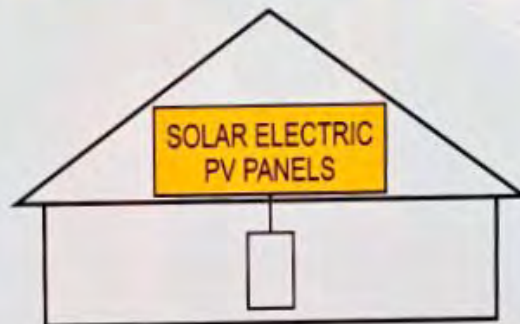
TENSION DANGEREUSE. PEUT CAUSER DES BLESSURES GRAVES OU LA MORT.
• Ne jamais manœuvrer l'interrupteur lorsque le couvercle est ouvert.
• Couper l'alimentation en amont de l'interrupteur avant toute intervention. Remplacer les pièces. Fermer le couvercle avant de remettre sous tension.

⚠ PELIGRO
VOLTAJE PELIGROSO. PUEDE CAUSAR HERIDAS SEVERAS O LA MUERTE.
• Nunca opere el interruptor con la cubierta abierta.
• Desconectar la alimentación del interruptor antes de trabajar dentro del mismo. Reemplazar todas las partes. Cerrar la cubierta antes de energizar el interruptor.

30-43080



SOLAR PV SYSTEM EQUIPPED WITH RAPID SHUTDOWN



TURN RAPID SHUTDOWN SWITCH TO THE "OFF" POSITION TO SHUT DOWN PV SYSTEM AND REDUCE SHOCK HAZARD IN THE ARRAY

pvlabels.com

05-112

AC DISCONNECT PHOTOVOLTAIC SYSTEM POWER SOURCE

RATED AC
OUTPUT CURRENT **48** AMPS

NOMINAL OPERATING
AC VOLTAGE **240** VOLTS

pvlabels.com

03-308

⚠ WARNING

ELECTRIC SHOCK HAZARD

TERMINALS ON THE LINE AND
LOAD SIDES MAY BE ENERGIZED
IN THE OPEN POSITION

pvlabels.com

05-215

CAUTION:

MULTIPLE SOURCES OF POWER
THE SERVICE DISCONNECT IS LOCATED
INSIDE OPPOSITE THE UTILITY METER

pvlabels.com 1-82

 **WARNING**
DUAL POWER SUPPLY
SOURCES: UTILITY GRID
AND PV SOLAR
ELECTRIC SYSTEM
ESS LOAD CENTER

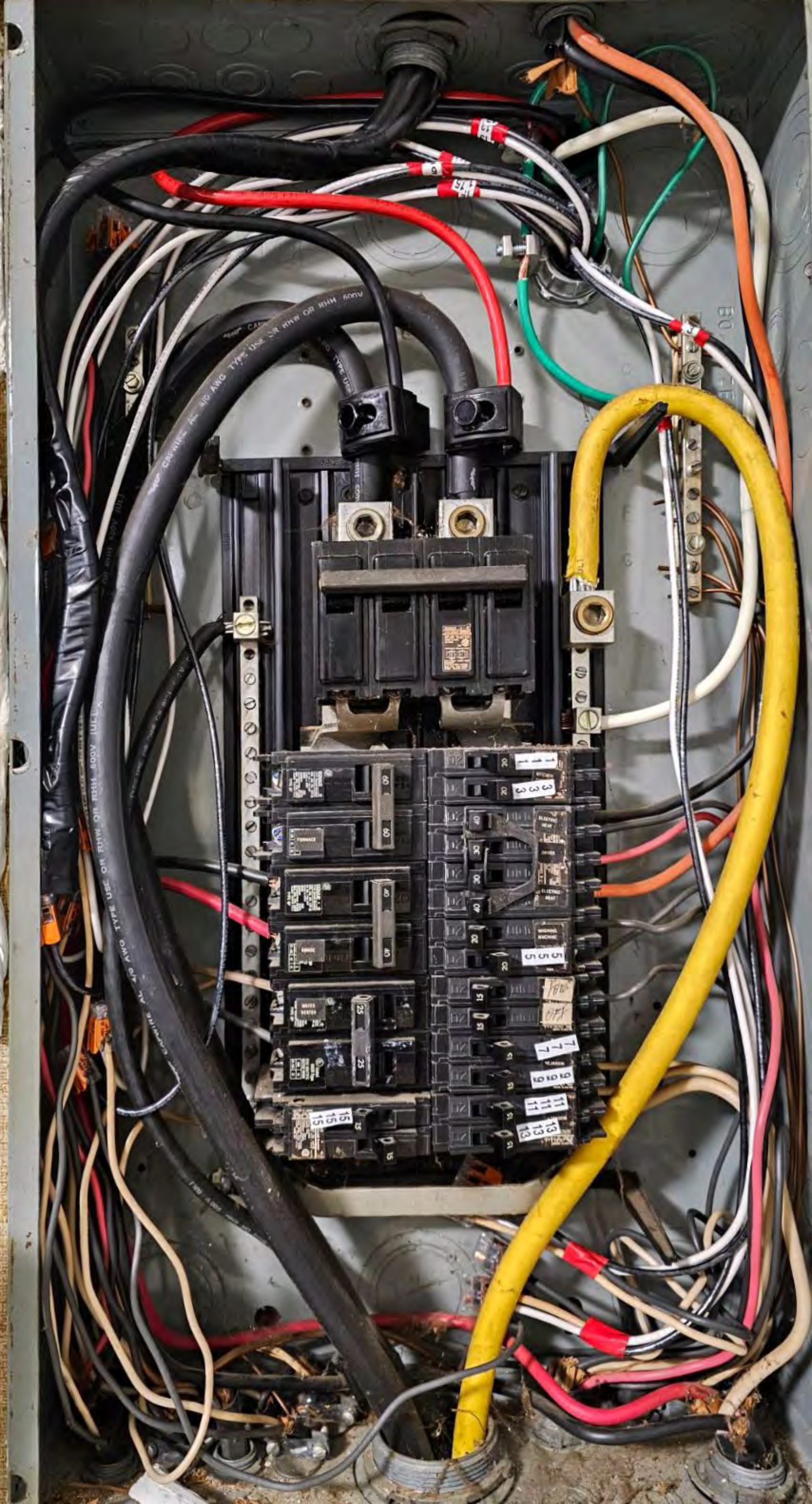
DANGER
HANDS OFF
ELECTRICITY
LIFE-THREATENING

 **WARNING**
DUAL POWER SUPPLY
SOURCES: UTILITY GRID
AND PV SOLAR
ELECTRIC SYSTEM
pubbels.com 05-411

CAUTION:
MULTIPLE SOURCES OF POWER
THE PV DISCONNECT IS LOCATED
BESIDE THE SERVICE METER
pubbels.com 3-42

 **WARNING**
POWER SOURCE
OUTPUT CONNECTION
DO NOT RELOCATE THIS
OVERCURRENT DEVICE
pubbels.com 8-278

 **WARNING**
THIS EQUIPMENT FED BY MULTIPLE
SOURCES. TOTAL RATING OF ALL
OVERCURRENT DEVICES, EXCLUDING
MAIN SUPPLY OVERCURRENT
DEVICE, SHALL NOT EXCEED
AMPACITY OF BUSBAR.
pubbels.com 05-108



UL US LISTED
ENCLOSED PANELBOARD
ISSUE NO. 0127100
E8741

F339
When making
inquiries, please
refer to this number
30-17-139
2
Technical
Refer to
No.

Terminal block with 5 green screws and 5 green wires connected.

Main terminal block with 12 slots. The left column contains three 60A and 15A breakers. The right column contains three 20A and 15A breakers. Each breaker is labeled with its rating and 'On/I'.

Bundle of black and white cables connected to the right side of the terminal block.

Bundle of green and red cables connected to the left side of the terminal block.







P

0

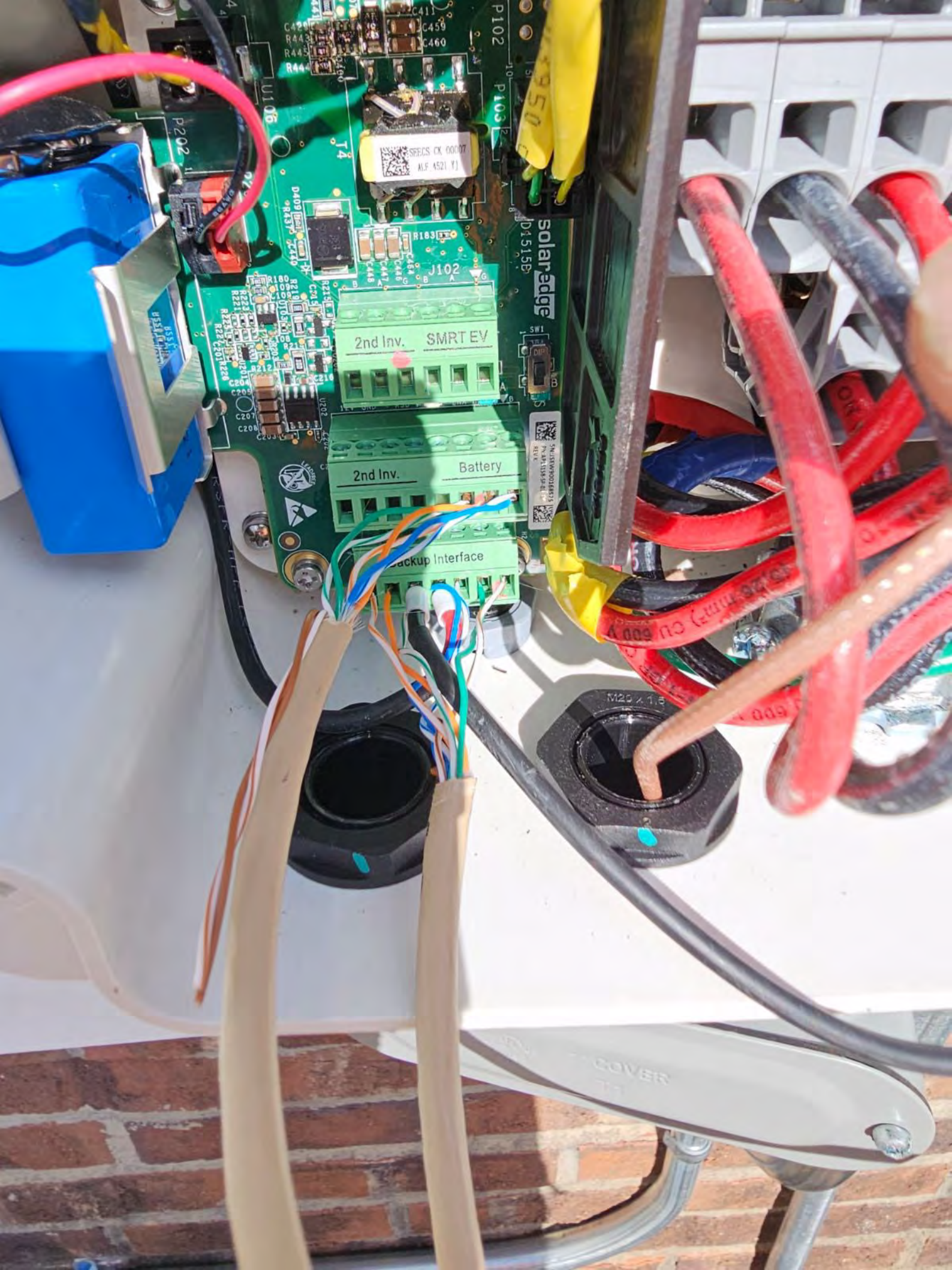
POWER

COMM

FAULT

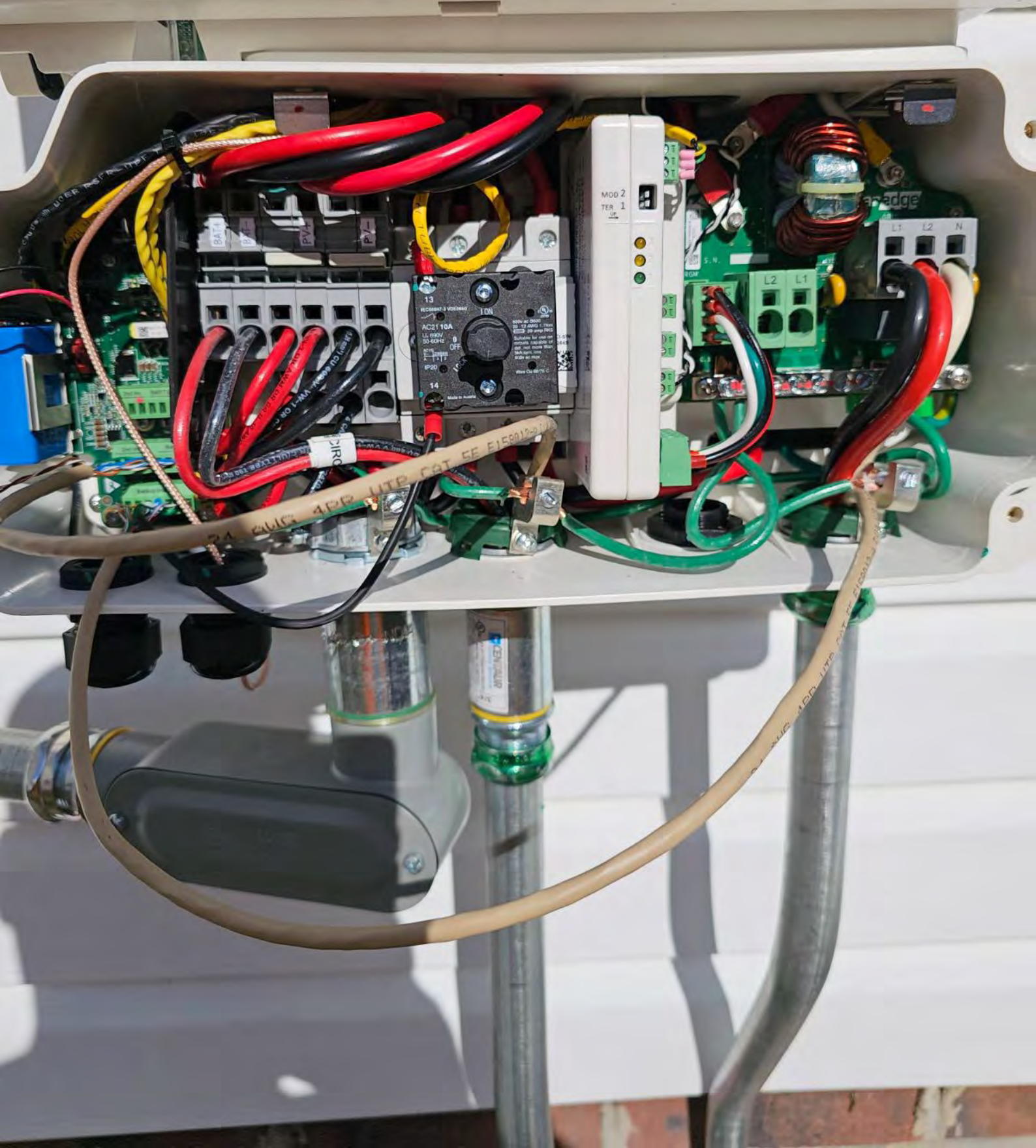
ANT

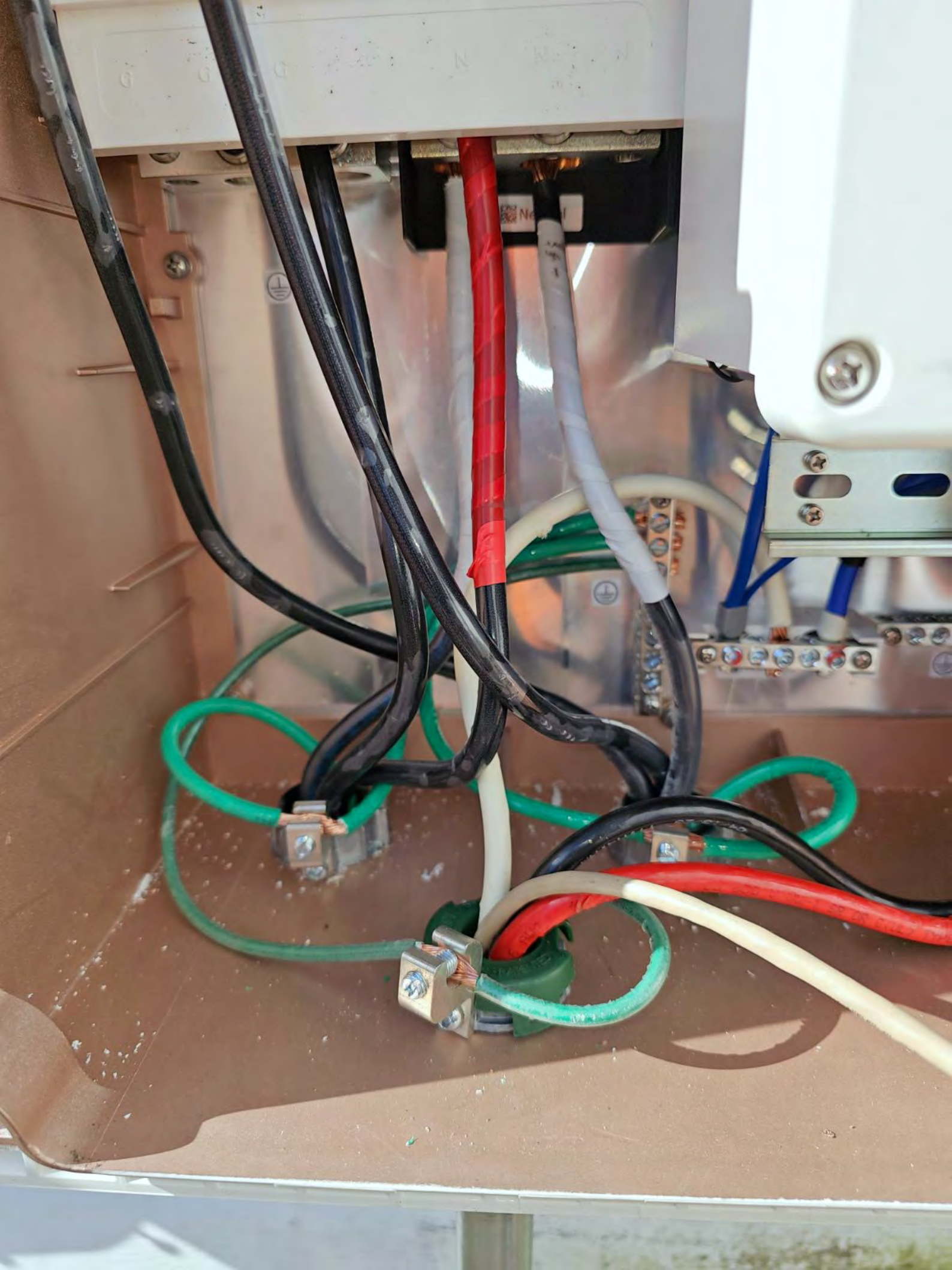
PN



ar edge

HD wave







LINE

SNAP-IN
2ND

SNAP-IN
2ND

REINSTALL AFTER WIRING

REINSTALE DESPUÉS DEL CABLEADO

RÉINSTALLER APRÈS L'INSTALLATION ÉLECTRIQUE

INSTALL 1ST

Edison

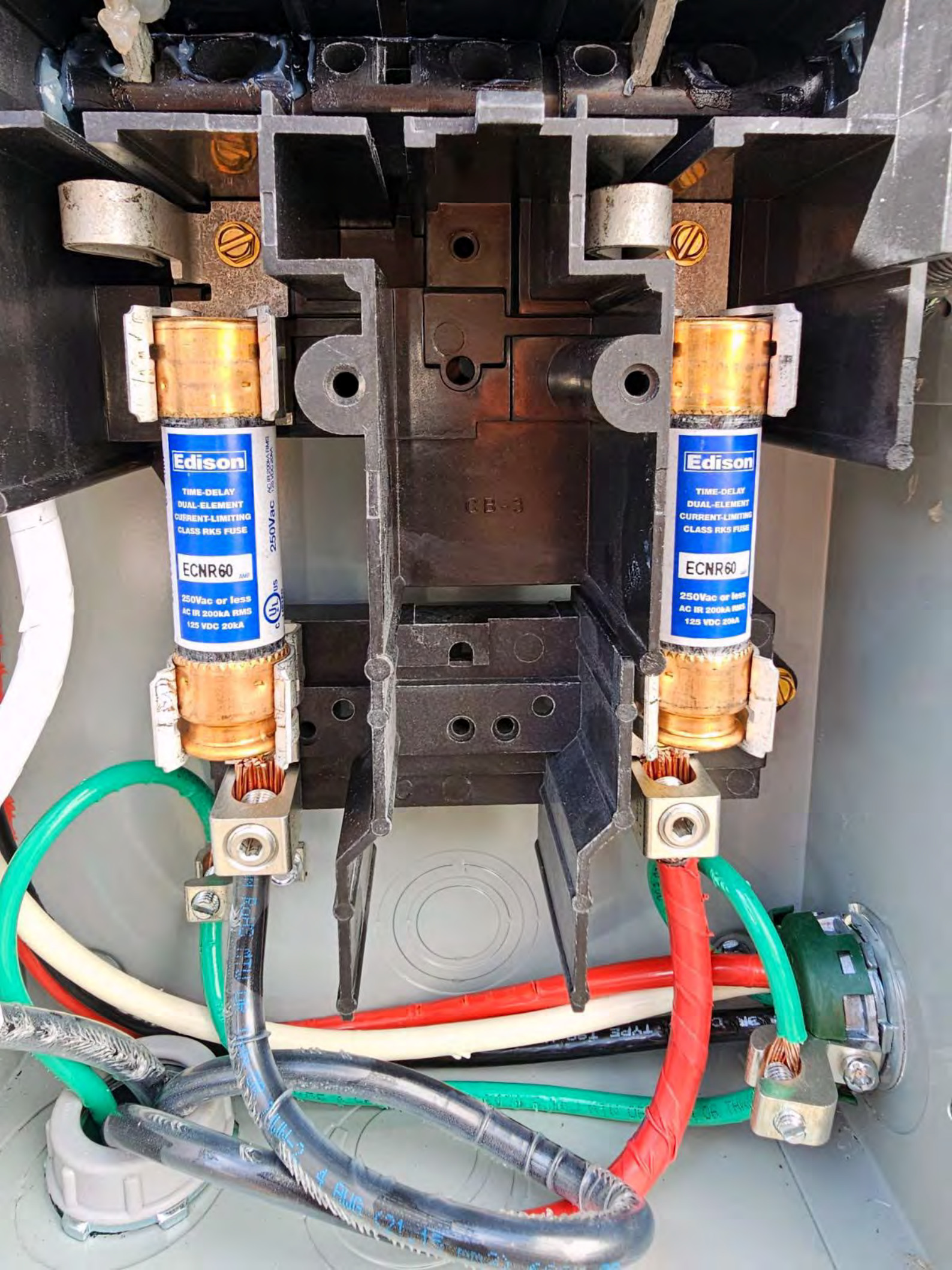
TIME-DELAY
FUSIBLE ELEMENT
CURRENT-LIMITING
CLASS RK5 FUSE
ECNR60

250VAC or less
AC IN 250VAC RMS
100 VDC 200A

Edison

TIME-DELAY
FUSIBLE ELEMENT
CURRENT-LIMITING
CLASS RK5 FUSE
ECNR60

250VAC or less
AC IN 250VAC RMS
100 VDC 200A



Edison

TIME-DELAY
DUAL-ELEMENT
CURRENT-LIMITING
CLASS RK5 FUSE

ECNR60

250Vac or less
AC IR 200kA RMS
125 VDC 20kA

250Vac or less
AC IR 200kA RMS
125 VDC 20kA

UL

Edison

TIME-DELAY
DUAL-ELEMENT
CURRENT-LIMITING
CLASS RK5 FUSE

ECNR60

250Vac or less
AC IR 200kA RMS
125 VDC 20kA

CB-3

4 AWG 600V
TYPE THHN

4 AWG 600V
TYPE THHN





BR816L125RP

TYPE 3R ENCLOSURE - RAINPROOF
 TUPO 3R - A PRUEBA DE LLUVIA

3/4" (19.05 mm)
 1" (25.40 mm)
 1-1/4" (31.75 mm)
 1-1/2" (38.10 mm)
 2" (50.80 mm)

DS075H1
 DS100H1
 DS125H1
 DS150H1
 DS200H1

SEE MAIN BREAKER RATING)
 1PH/FASE-3W/HILOS
 1PH/FASE-3W/HILOS
 (FROM 3PH-4W NETWORK/DEUNA RED DE 3 FASE-4 HILOS)
 1PH/FASE
 (USE ONLY 240 VAC BREAKERS/ SOLAMENTE UTILICE INTERRUPTORES 240 VCA)

CIRCUIT RATING: 10,000 RMS SYM AMPS, 240 VAC MAX.
 CIRCUIT RATING IS LIMITED TO THE LOWEST INTERRUPTING RATING OF ANY DEVICE INSTALLED.
 RATING DE CIRCUITO CORTO: 10,000 RMS SYM AMPS, 240 VAC MAX. LA CAPACIDAD DE CORTOCIRCUITO SE LIMITA A LA CAPACIDAD DE CUALQUIER DISPOSITIVO INSTALADO.

MAIN CIRCUIT BREAKER / INTERRUPTOR DE CIRCUITO PRINCIPAL DEL INQUILINO	BRANCH BREAKERS / INTERRUPTOR DE RAMAL	SHORT CIRCUIT RATING / CAPACIDAD DE CORTO CIRCUITO
BR, CCVH	BR, BD, BRD, BQ,	22,000
	BQC, BRAF, BRSN,	25,000
	BRWH, GFCB, GFEP,	42,000
	CH, CH3, CHT, CHGF	65,000

ADDITIONAL OR REPLACEMENT BREAKERS SHALL BE OF THE SAME MANUFACTURER AND TYPE; AND SHALL HAVE AN INTERRUPTING RATING EQUAL TO OR GREATER THAN THE INTERRUPTING RATING OF ANY CIRCUIT BREAKER INSTALLED.
 INTERRUPTORES ADICIONALES O DE REEMPLAZO SERÁN DE LA MISMA FABRICANTE Y TIPO; Y DEBERÁ TENER UNA CLASIFICACIÓN INTERRUPTORA IGUAL O MAYOR QUE LA CLASIFICACIÓN INTERRUPTORA DE CIRCUITO CORTO.

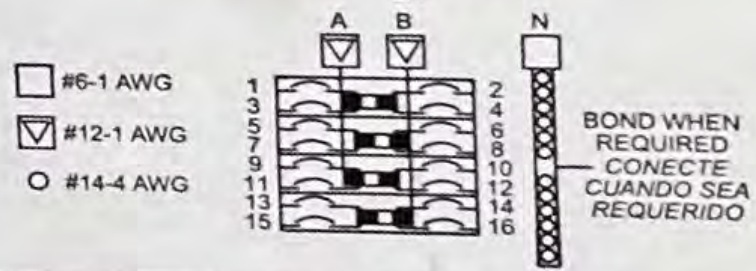
TYPE BR, BD, BQ, BQC, BRD, BRAF, BRSN, BRWH, GFCB, or GFEP BREAKERS.
 TIPO BR, BD, BQ, BQC, BRD, BRAF, BRSN, BRWH, GFCB, or GFEP INTERRUPTORES.

TERMINALS SUITABLE FOR AL-CU WIRE WHEN SO MARKED. REFER TO MARKINGS ON BREAKER.
 TERMINALES DE INTERRUPTOR APTO PARA ALAMBRE AL-CU CUANDO SE MARCAN. CONSULTE LAS MARCAS EN EL INTERRUPTOR.

HANDLE IN MID POSITION INDICATES BREAKER IS "OFF". TO RESTORE SERVICE, MOVE HANDLE TO EXTREME "OFF", THEN TO "ON".
 EL MANEJO DEL INTERRUPTOR EN POSICIÓN MEDIA INDICA QUE EL INTERRUPTOR ESTÁ "APAGADO". PARA RESTAURAR EL SERVICIO, MOVER EL MANEJO A EXTREMO, LUEGO A "ENCENDIDO".

TYPE BR, HQP or TYPE CH SERVICE ENTRANCE MAIN BREAKERS, ORDER BARRIER KIT # TIMCB3/0 (ORDER TWO KITS FOR 3 POLE MAIN BREAKERS)

BOX NO./CAJA NO. BR



TORQUE WIRE PRESSURE SCREW(S) AS FOLLOWS:
 APRIETE LOS TORNILLOS DE SUJECION DE CABLE A LOS VALORES DE TORQUE SIGUIENTES:

WIRE SIZE / CABLE CALIBRE / 60°/75° C AL/CU / AWG/KCMIL	LB-IN (N-M)	LB-IN (N-M)
#12-10	20 (2.26)	35 (3.96)
#8	25 (2.82)	40 (4.52)
#6-4	35 (3.96)	45 (5.08)
#3-2/0		50 (5.65)

TO CLOSE UNUSED OPENINGS IN COVER, USE EATON CAT. NO. BRFP.
 PARA CERRAR LAS ABERTURAS NO UTILIZADAS EN LA CUBIERTA USE EATON CAT. NO. BRFP.

SUITABLE FOR USE AS SERVICE EQUIPMENT WHEN A MAIN BREAKER IS USED OR WHEN NOT MORE THAN SIX SERVICE DISCONNECTING MEANS ARE PROVIDED AND WHEN NOT USED AS A LIGHTING AND APPLIANCE PANELBOARD.
 APTO PARA USO COMO EQUIPO DE SERVICIO CUANDO SE UTILIZA UN INTERRUPTOR PRINCIPAL O CUANDO NO SE PROPORCIONAN MÁS DE SEIS MEDIOS DE DESCONEXIÓN DE SERVICIO Y CUANDO NO SE UTILICE COMO UN PANEL DE ILUMINACIÓN Y APARATOS.

THIS DEVICE ACCEPTS EATON TYPE GBK GROUND BARS. ALL HOLES ARE SUITABLE FOR (1) #14-4 WIRE OR UP TO (3) #14-4 WIRES.
 ESTE DISPOSITIVO ACEPTA BARRAS DE TIERRA GBK TIPO EATON. LOS AGUJEROS DE ALAMBRE SON ADECUADOS PARA (1) #14-4 O HASTA (3) ALAMBRES #14-4.

FEEDERS

LIGHT

SPARE

Off/On On/Off
60 On/Off
60 On/Off
15 On/Off
15 On/Off

AT&T
Type BR250
Type C280
120/240 V -
CUL/AL
HACR Type
E Pole J-669
LR43559 Digi.
LISTED

Common Trip

AT&T
Type BR115
Type BR115
120/240 V -
CUL/AL
HACR Type
E Pole J-669
LR43559 Digi.
LISTED

KITCHEN

KITCHEN

DINING

BEDROOM 1

BEDROOM 1

BEDROOM 2

BEDROOM 2

Off/On On/Off
20 On/Off
20 On/Off
20 On/Off
15 On/Off
15 On/Off
15 On/Off
15 On/Off

AT&T
Type BR200
DNP L2020
Type BR0A & DMPL
120/240 V -
CUL/AL
HACR Type
E Pole J-669
LR43559 Digi.
LISTED

AT&T
Type BR120
Type C120
120/240 V -
CUL/AL DMPL
HACR Type
E Pole J-669
LR43559 Digi.
LISTED

AT&T
Type BR115
Type BR115
120/240 V -
CUL/AL
HACR Type
E Pole J-669
LR43559 Digi.
LISTED

AT&T
Type BR1510
DNP L1510
Type BR0A & DMPL
120/240 V -
CUL/AL
HACR Type
E Pole J-669
LR43559 Digi.
LISTED

solaredge SE11400H – US
**Grid Support Utility Interactive
Non – Isolated Photovoltaic Inverter**

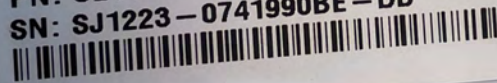
Operating Voltage Range 380 – 480Vdc
Max Input Current 30Aac
Max Continuous Output Power 10000Wac @ 208V 11400Wac @ 240V
Voltage Min – Nom – Max 183 – 208 – 229Vac
211 – 240 – 264Vac
Max Continuous Output Current 48.5Aac @ 208V 47.5Aac @ 240V
Max Output Fault Current 74Aac
Max Utility Backfeed Current 0Aac
Frequency Min – Nom – Max 59.3 – 60.0 – 60.5Hz
Output Power Factor +/- 0.85 – 1
Max Ambient Temperature 60 C
Enclosure IP65 / Type 3R
With integrated ground fault protection per NEC 690.35 (C)
Type 1 Photovoltaic Arc – Fault Circuit – Protection

WI – FI Password: Cy2a4B8Y
Activation: Lvkl kt9U Xmi3 JJ+ A0oU KbB3 fy8 =

WIFI MAC:
84:D6:C5:4D:18:A5
ZigBee MAC:



PN: SE11400H – USSNBBL15
SN: SJ1223 – 0741990BE – DB



solaredge



**PHOTOVOLTAIC RAPID
SHUTDOWN SYSTEM**

solar edge



ETL LISTED
CONFORMS TO
ANSI/UL 1741
CERTIFIED TO
CAN/CSA
C22.2 NO 107



Intertek
4004590

741990BE-DB



Contains FCC ID: 2AGPT-PLNX, IC: 20916-PNLX. The enclosed device complies with part 15 of the FCC Rules. Operation is subject to the following two conditions:
(i.) this device may not cause harmful interference and
(ii.) this device must accept any interference received, including interference that may cause undesired operation.
PATENT MARKING NOTICE: SEE www.solaredge.com/groups/patent

Made in China



solar edge

Connection Unit

480 Vdc
62 Adc
23.2 kWdc
31 Adc
11.6 kWdc
264 Vac
50/60 Hz
48 Aac