



7
4
2



SILFAB SOLAR **SILFAB ELITE**
SIL-410 BG

Model: SIL-410 BG
Voltage: 120V AC
Current: 10A

Maximum Power (P _{max})	410 W
Maximum Power Voltage (V _{mp})	22.00 V
Maximum Power Current (I _{mp})	18.64 A
Open Circuit Voltage (V _{oc})	27.77 V
Short Circuit Current (I _{sc})	4.80 A
Maximum System Voltage (V _{max})	1500 V
Short Circuit Current (I _{sc})	11.80 A
Maximum System Voltage (V _{max})	1500 V
Surge Protection (SPV)	200 A

For more information, please visit our website at www.silfab.com

TO DOWNLOAD INSTALLATION MANUAL, VISIT WWW.SILFABSOLAR.COM

742 RIVER RD
FUQUAY VARIANA NC 27526




ELECTRICAL SPECIFICATIONS

measured at Standard Test Conditions (STC):
1000W/m² irradiance, AM_{1.5G} spectrum, 25°C cell temperature

CARACTÉRISTIQUES ÉLECTRIQUES
mesurée dans conditions d'essai normalisées:
1000W/m² rayonnement, spectre de AM_{1.5G}, température des cellules de 25°C

Maximum Power (P _{max}) Puissance Nominale Maximale	410	+10 -0	W
Maximum Power Voltage (V _{pmax}) Tension en Fonctionnement Optimal	38.08		V
Maximum Power Current (I _{pmax}) Courant en Fonctionnement Optimal	10.77		A
Open Circuit Voltage (V _{oc}) Tension en Circuit Ouvert	45.92		V
Short Circuit Current (I _{sc}) Intensité de Court-Circuit	11.30		A
Maximum System Voltage Tension Maximale du Système	1000		V
Series Fuse Série Fusible	20		A
Fire Rating Classement au Feu	Type 1		



For field connections use min No. 12 AWG wires suitable for a minimum of 90°C. Use copper wires only.
Pour les connexions de terrain utilisez min 12 AWG res appropriées pour un min de 90°C. Utilisez des fils de cuivre seulement.



Conforms to UL Std. 61730
Certified to CSA Std. 61730

Intertek
5014673

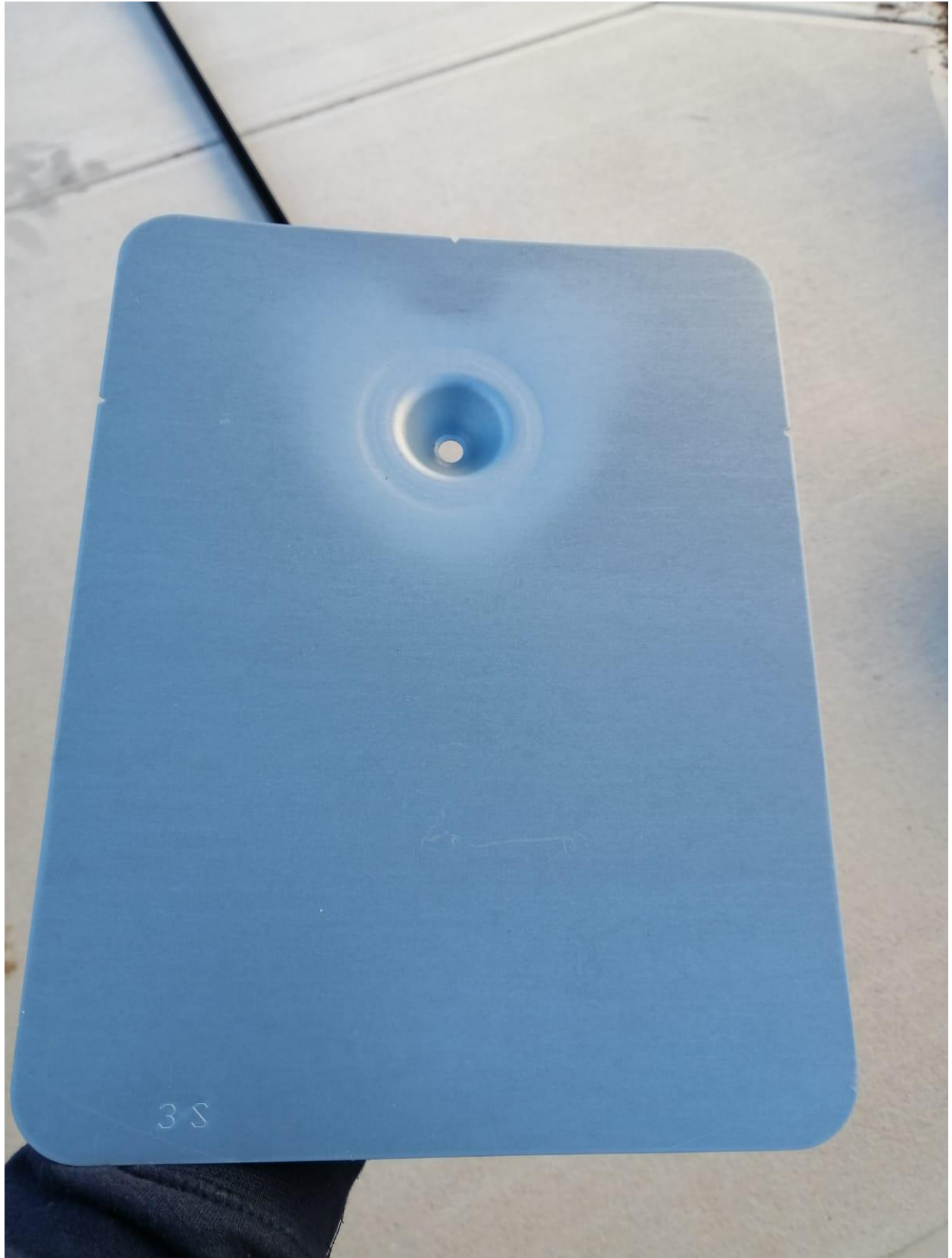
TO DOWNLOAD INSTALLATION MANUAL
OR DATASHEET, SCAN QR-CODE OR
GO TO: WWW.SILFABSOLAR.COM



Made in WA, USA

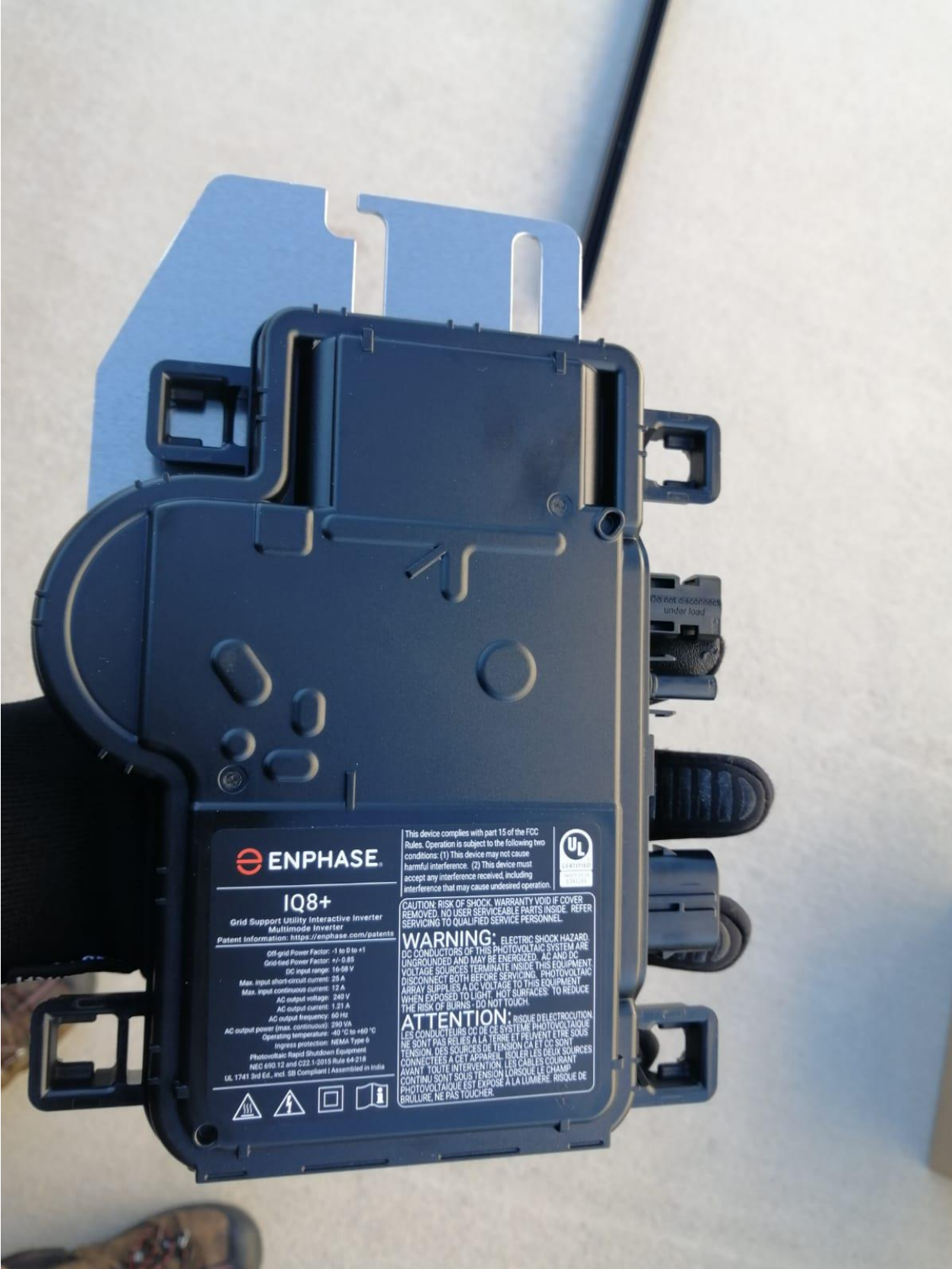
742 RIVER RD
FUQUAY VARINA NC 27526











ENPHASE

IQ8+

Grid Support Utility Interactive Inverter
Multimode Inverter

Patent Information: <https://enphase.com/patents>

Off grid Power Factor: -1 to 0 to +1
Grid-tied Power Factor: +/- 0.85
DC input range: 16-58 V
Max. input short-circuit current: 25 A
Max. input continuous current: 12 A
AC output voltage: 240 V
AC output current: 1.21 A
AC output frequency: 60 Hz
AC output power (max. continuous): 290 VA
Operating temperature: -40 °C to +60 °C
Ingress protection: NEMA Type 9
Photovoltaic Rapid Shutdown Equipment
NEC 690.12 and C22.1 2015 Rule 64-218
UL 1741 3rd Ed., vol. CB Compliant | Assembled in India

This device complies with part 15 of the FCC Rules. Operation is subject to the following two conditions: (1) This device may not cause harmful interference. (2) This device must accept any interference received, including interference that may cause undesired operation.



CAUTION: RISK OF SHOCK. WARRANTY VOID IF COVER REMOVED. NO USER SERVICEABLE PARTS INSIDE. REFER SERVICING TO QUALIFIED SERVICE PERSONNEL.

WARNING: ELECTRIC SHOCK HAZARD. DC CONDUCTORS OF THIS PHOTOVOLTAIC SYSTEM ARE UNGROUNDED AND MAY BE ENERGIZED. AC AND DC VOLTAGE SOURCES TERMINATE INSIDE THIS EQUIPMENT. DISCONNECT BOTH BEFORE SERVICING. PHOTOVOLTAIC ARRAY SUPPLIES A DC VOLTAGE TO THIS EQUIPMENT WHEN EXPOSED TO LIGHT. HOT SURFACES: TO REDUCE THE RISK OF BURNS - DO NOT TOUCH.

ATTENTION: RISQUE D'ELECTROCUTION. LES CONDUCTEURS DC DE CE SYSTEME PHOTOVOLTAIQUE NE SONT PAS RELIES A LA TERRE ET PEUVENT ETRE SOUS TENSION. DES SOURCES DE TENSION CA ET CC SONT CONNECTEES A CET APPAREIL. ISOLER LES DEUX SOURCES AVANT TOUTE INTERVENTION. LES CABLES COURANT CONTINU SONT SOUS TENSION. LORSQUE LE CHAMP PHOTOVOLTAIQUE EST EXPOSE A LA LUMIERE, RISQUE DE BRULURE. NE PAS TOUCHER.



Do not disconnect under load





























 **ENPHASE**

IQ8+

Grid Support Utility Interactive Inverter
Multimode Inverter
Patent Information: <https://enphase.com/patents>

Off-grid Power Factor: -1 to 0 to +1
Grid-tied Power Factor: +/- 0.85
DC Input range: 16-58 V
Max. input short-circuit current: 25 A
Max. input continuous current: 12 A
AC output voltage: 240 V
AC output current: 1.21 A
AC output frequency: 60 Hz
AC output power (max. continuous): 290 VA
Operating temperature: -40 °C to +60 °C
Ingress protection: NEMA Type 6
Photovoltaic Rapid Shutdown Equipment
NEC 690.12 and C22.1-2015 Rule 64-219
UL 1741 3rd Ed., incl. SB Compliant | Assembled in India



This device complies with part 15 of the FCC Rules. Operation is subject to the following two conditions: (1) This device may not cause harmful interference. (2) This device must accept any interference received, including interference that may cause undesired operation.



CAUTION: RISK OF SHOCK. WARRANTY VOID IF COVER REMOVED. NO USER SERVICEABLE PARTS INSIDE. REFER SERVICING TO QUALIFIED SERVICE PERSONNEL.

WARNING: ELECTRIC SHOCK HAZARD. DC CONDUCTORS OF THIS PHOTOVOLTAIC SYSTEM ARE UNGROUNDED AND MAY BE ENERGIZED. AC AND DC VOLTAGE SOURCES TERMINATE INSIDE THIS EQUIPMENT. DISCONNECT BOTH BEFORE SERVICING. PHOTOVOLTAIC ARRAY SUPPLIES A DC VOLTAGE TO THIS EQUIPMENT WHEN EXPOSED TO LIGHT. HOT SURFACES. TO REDUCE THE RISK OF BURNS - DO NOT TOUCH.

ATTENTION: RISQUE D'ELECTROCUTION. LES CONDUCTEURS CC DE CE SYSTEME PHOTOVOLTAIQUE NE SONT PAS RELIES A LA TERRE ET PEUVENT ETRE SOUS TENSION. DES SOURCES DE TENSION CA ET CC SONT CONNECTEES A CET APPAREIL. ISOLER LES DEUX SOURCES AVANT TOUTE INTERVENTION. LES CABLES COURANT CONTINU SONT SOUS TENSION LORSQUE LE CHAMP PHOTOVOLTAIQUE EST EXPOSE A LA LUMIERE. RISQUE DE BRULURE. NE PAS TOUCHER.















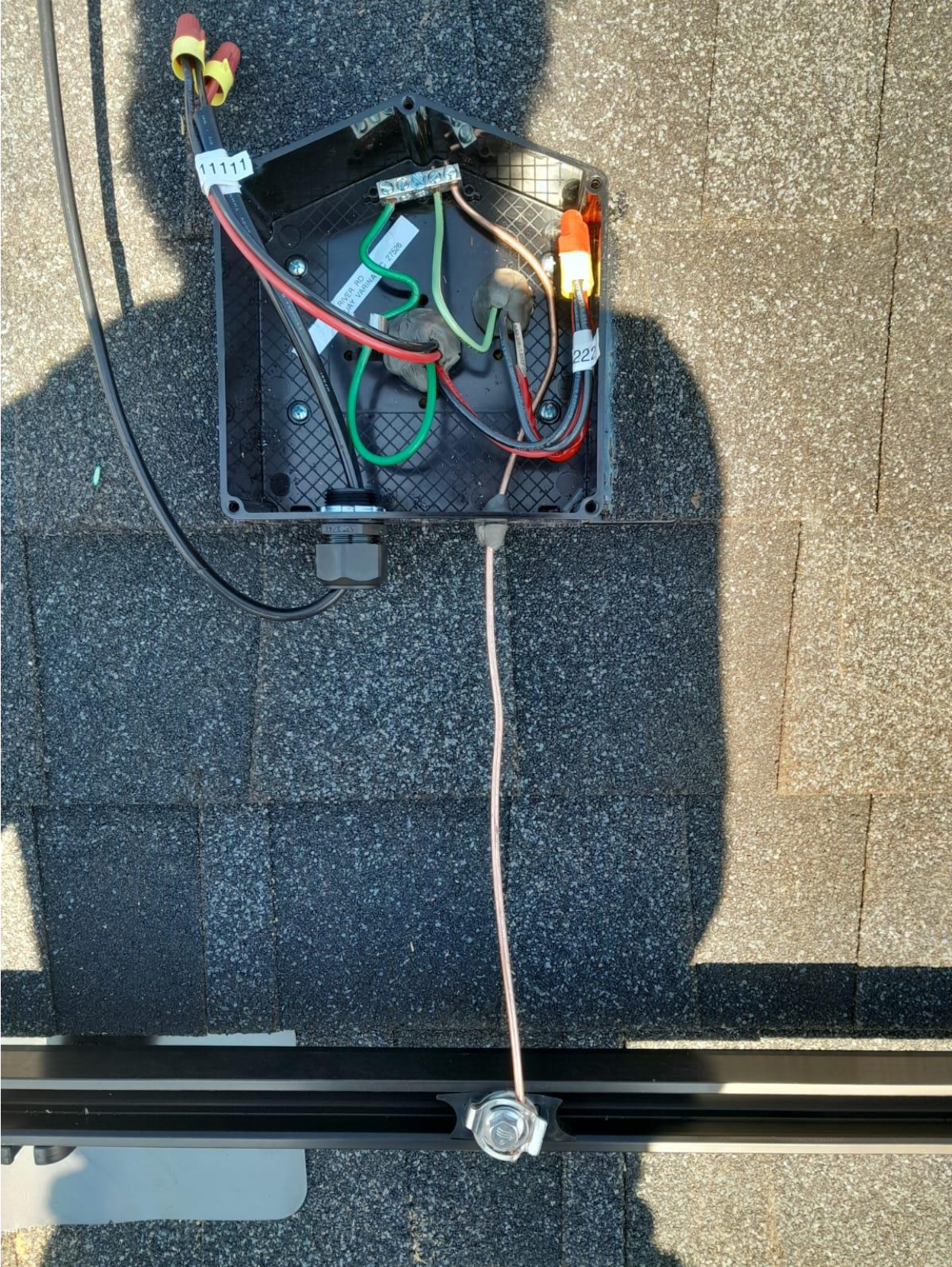
EZ
SOLAR

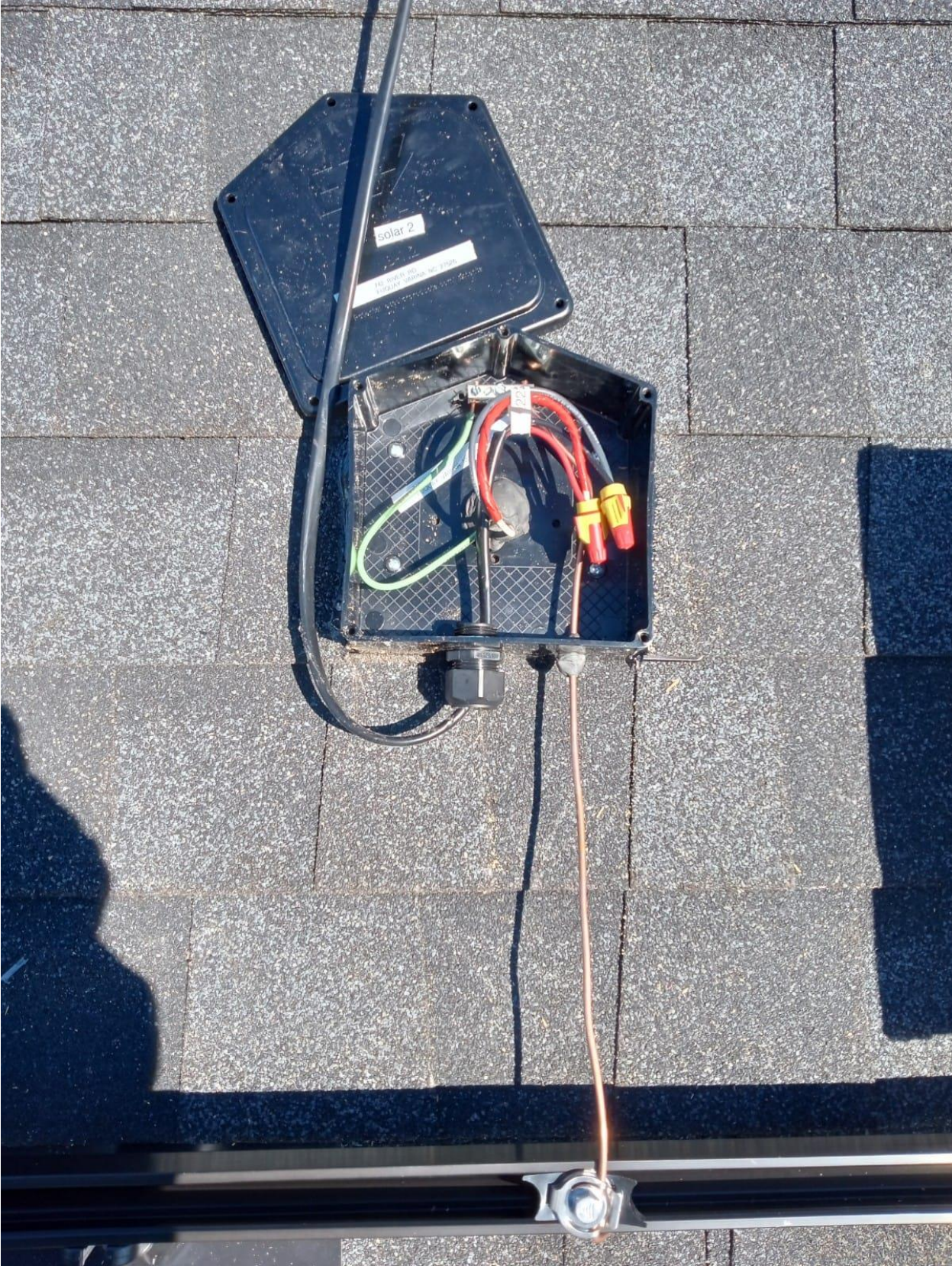
SOLAR 1

JB-1.2

742 RIVER RD
FUQUAY VARIANA NC 27526

Patents: ezsolarprouducts.com/patents







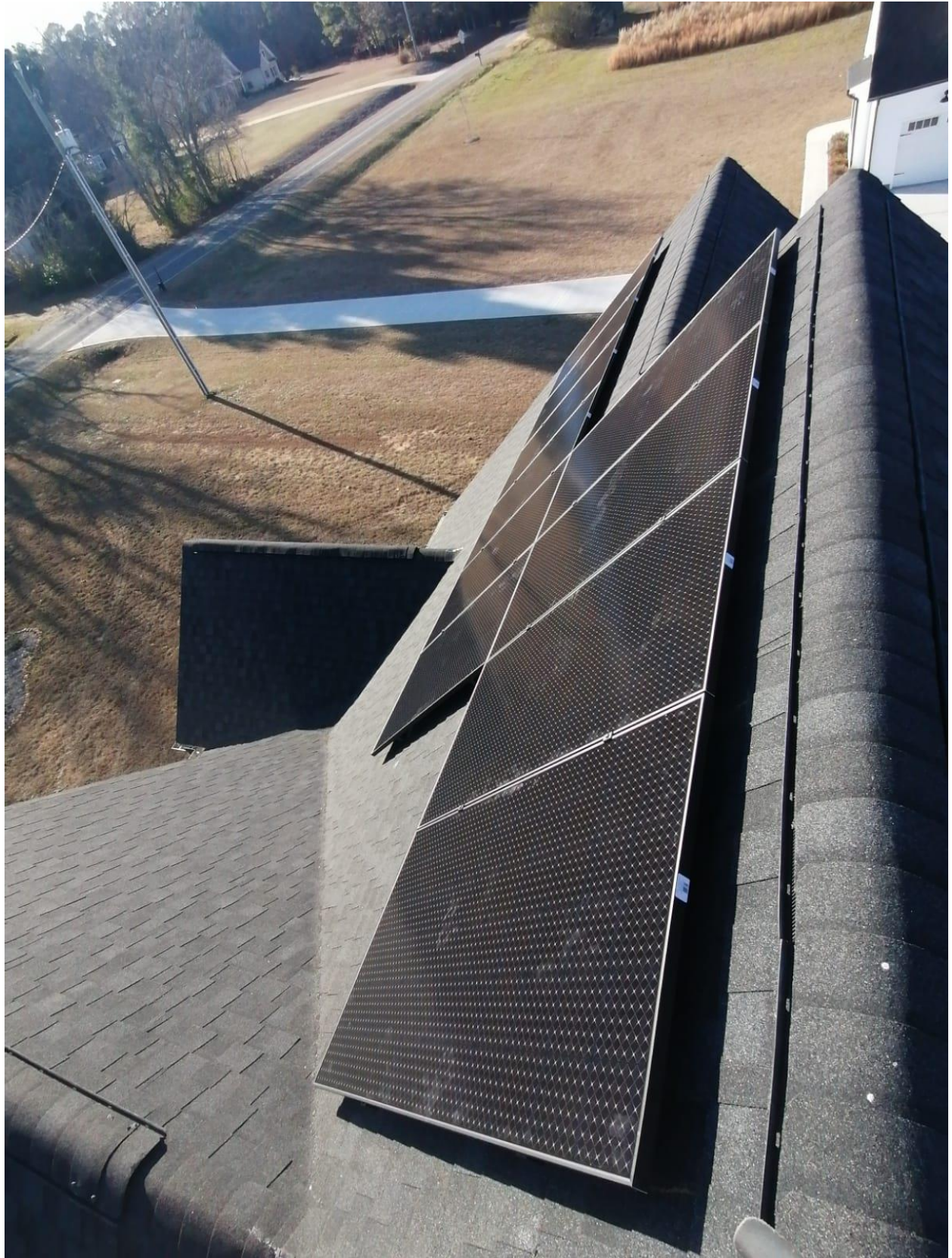
EZ4
SOLAR

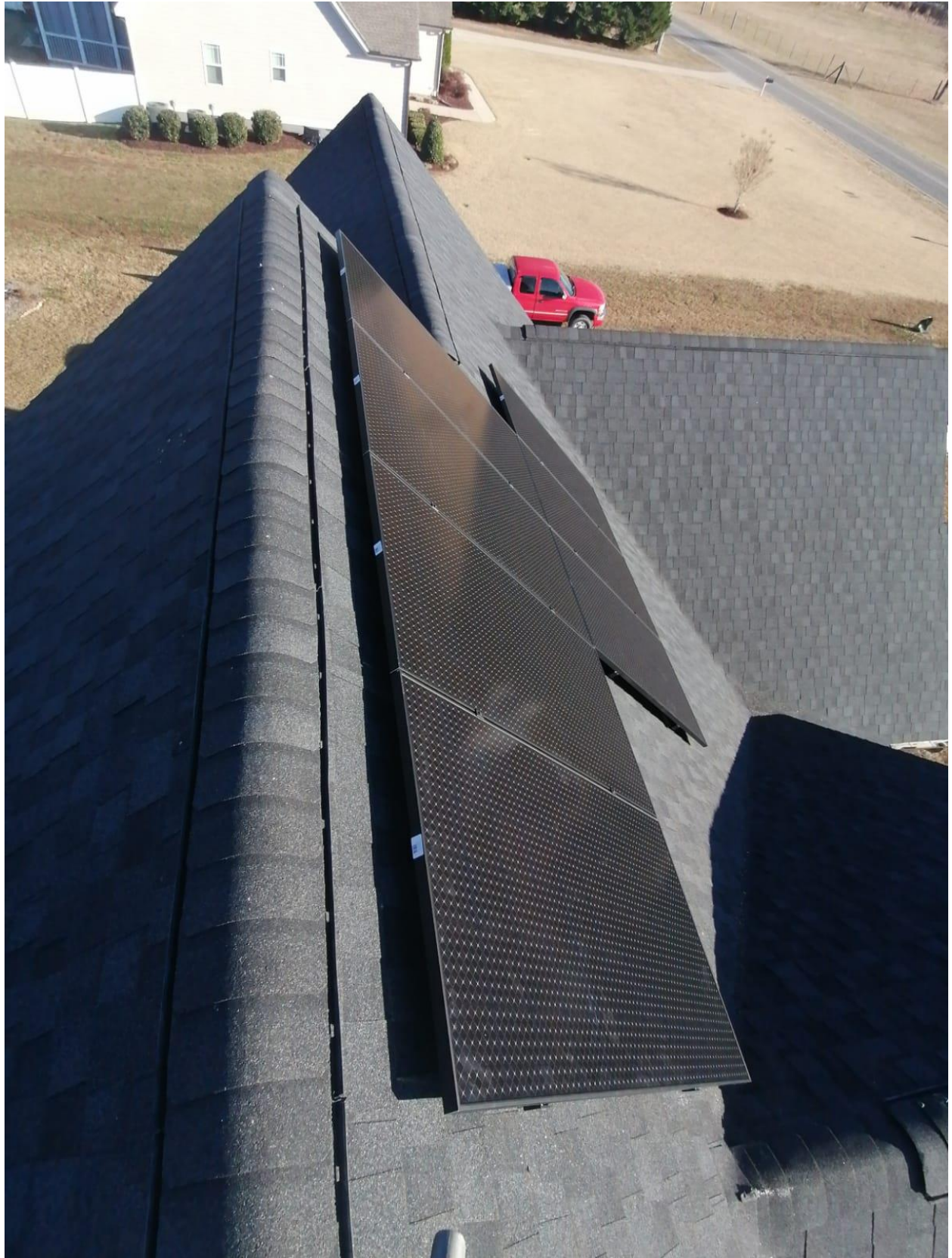
solar 2

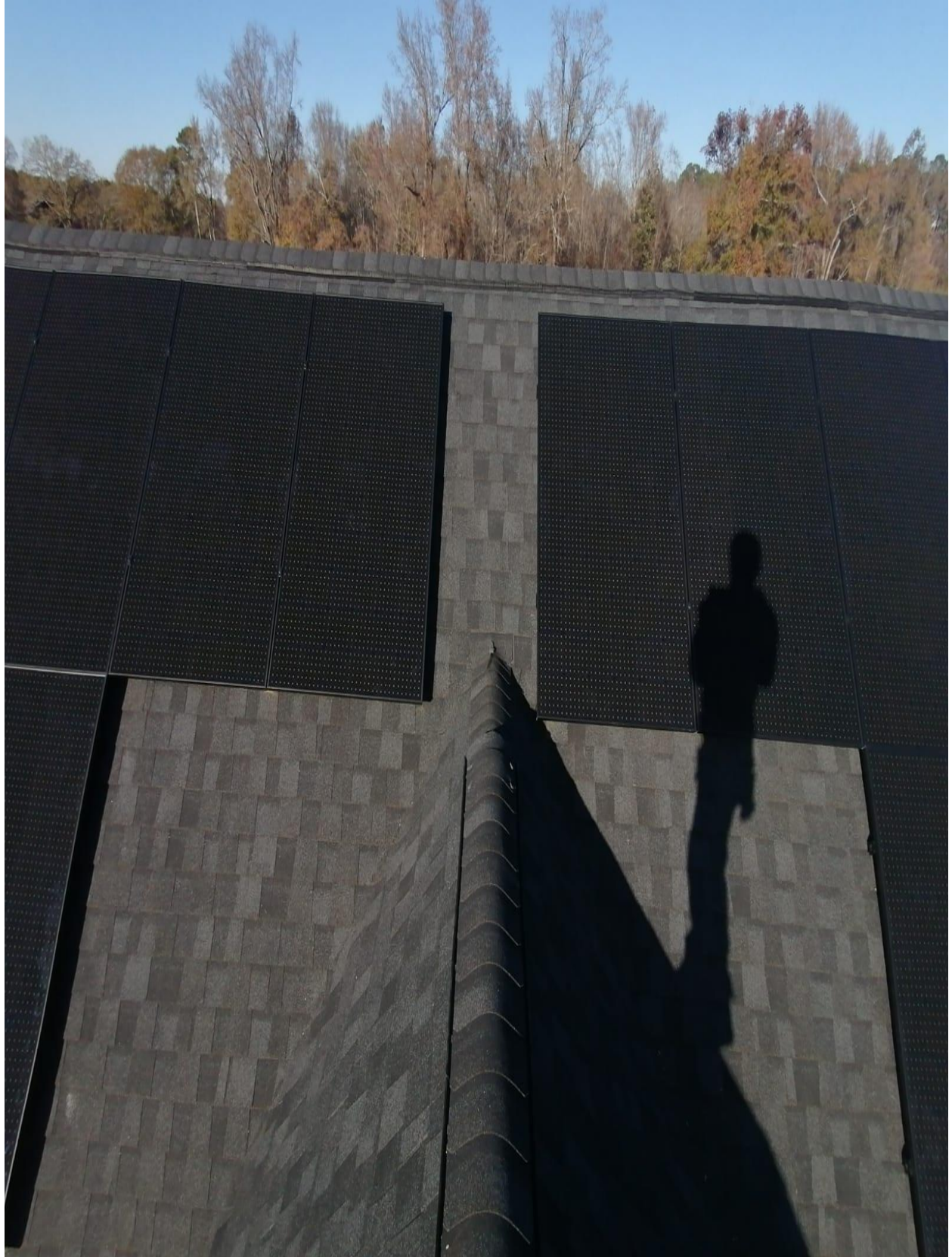
JB-12

742 RIVER RD
FUQUAY VARINA NC 27526

Website: ez4solarproducts.com/bolts

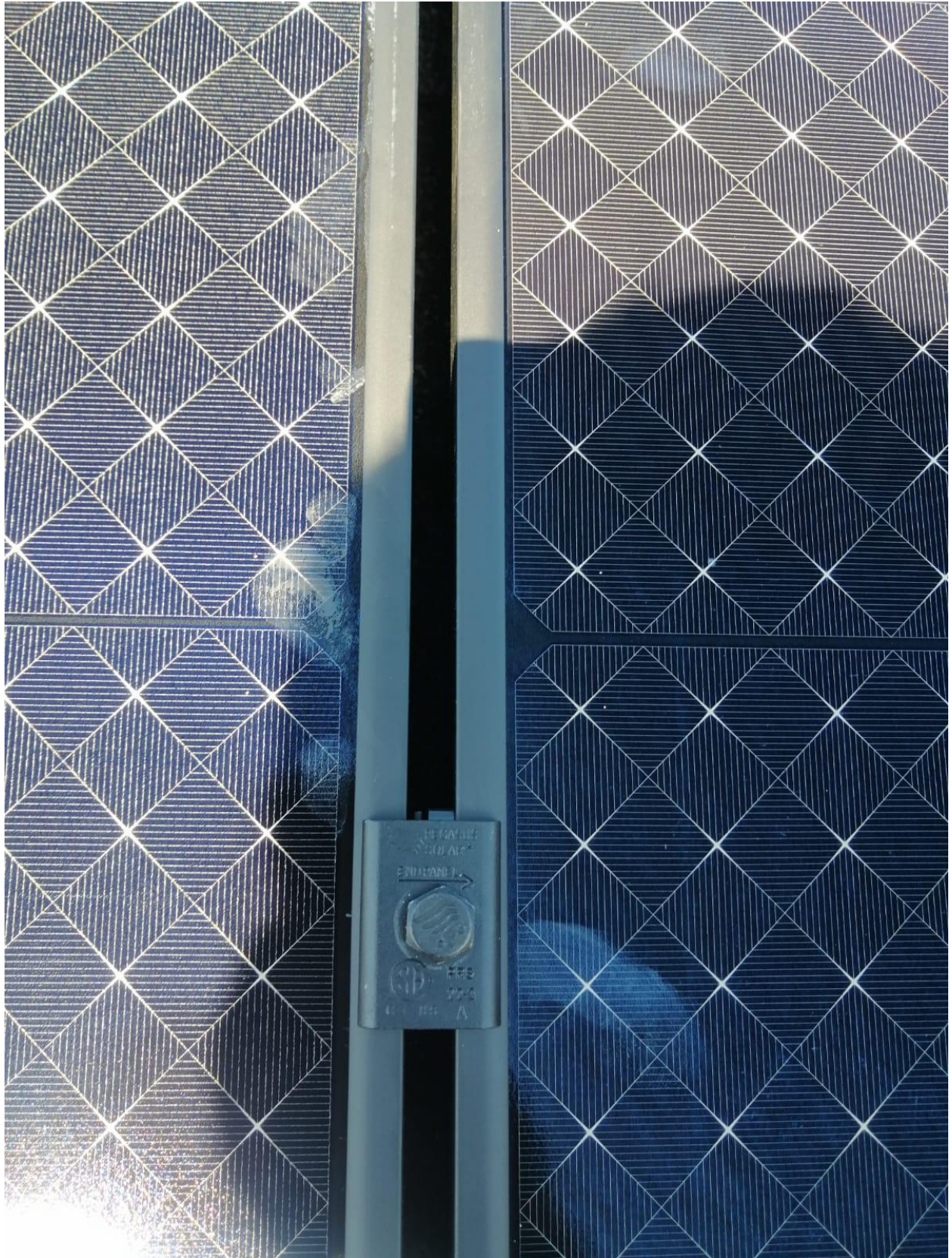














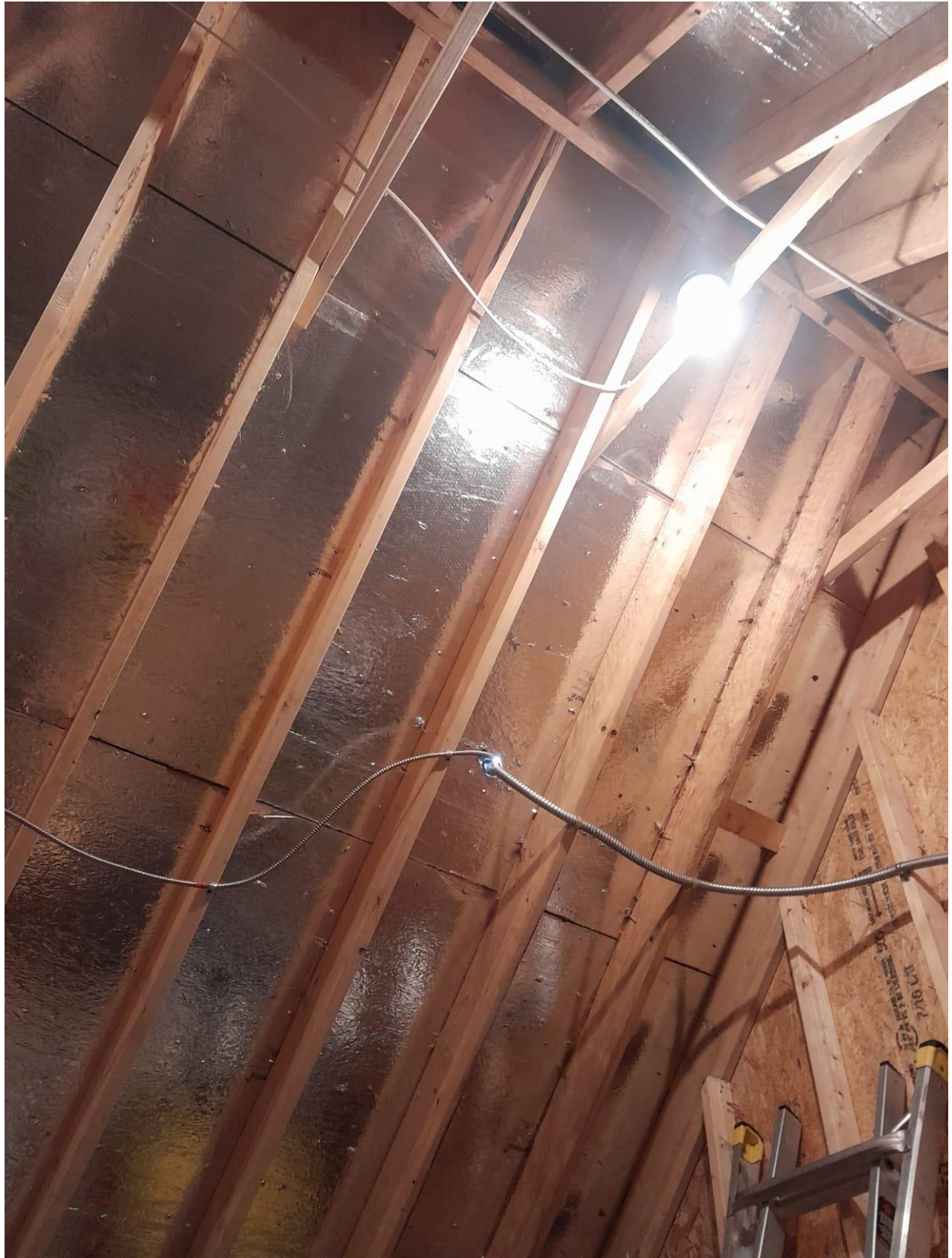






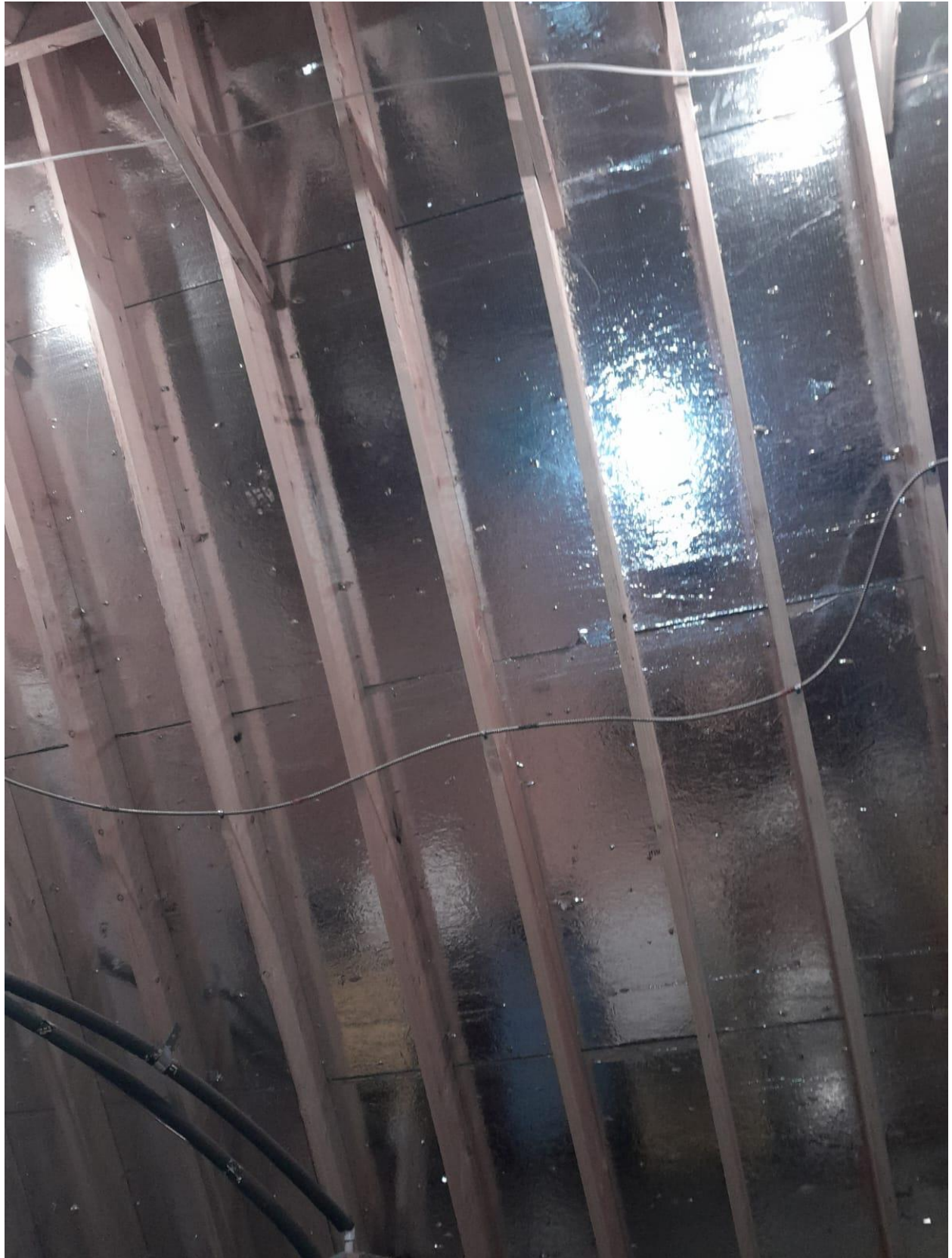




























E121488
3/4" COVER





