

01749A5BA-BF



Do Not Remove 1749A5BA-BF



SolarEdge Technologies Ltd.  
SolarEdge Technologies GmbH/  
Werner-Eckert-Straße 6/81829 Munich/Germany



### CAUTION

HOT SURFACES-TO REDUCE THE RISK OF BURNS-DO NOT TOUCH. RISK OF ELECTRIC SHOCK-WHEN THE PHOTOVOLTAIC ARRAY IS EXPOSED TO LIGHT, IT SUPPLIES A DC VOLTAGE TO EQUIPMENT. COVER PV MODULE WITH OPAQUE MATERIAL BEFORE CONNECTING OR DISCONNECTING THIS OPTIMIZER. DURING FAULT, ZERO CURRENT IS SOURCED INTO DC ARRAY BY CONVERTER.

SolarEdge Technologies Ltd.  
Power Optimizer

Solaredge Technologies GmbH/  
Werner-Eckert-Straße 6/81829  
Munich/Germany

**WARNING** ELECTRIC SHOCK HAZARD. THE DC CONDUCTORS OF THIS PHOTOVOLTAIC SYSTEM ARE UNGROUNDED AND MAY BE ENERGIZED.

### AVERTISSEMENT

RISQUE DE CHOC ELECTRIQUE: QUAND LE CHAMP PHOTOVOLTAIQUE EST EXPOSE A LA LUMIERE, UNE TENSION CC EST FOURNIE A CET EQUIPEMENT. SURFACES CHAUDES: NE PAS TOUCHER, AFIN DE REDUIRE LES RISQUES DE BRULURES LE COURANT DE RETOUR INJECTE PAR LE CONVERTISSEUR EN CAS DE DEFAILLANCE DANS LE MODULE PV EST TOUJOURS NUL.







FDUR-

SolarEdge | IndOP

IN 4

DC Output: 440W/5-60V/15A  
DC Input: 8-60V/14.5A  
Open Circuit Voltage: 1V

MADE IN: Mexico

NA02  
SM4922-01749A5BA-BF  
S440-1GM4MRM





**WARNING**  
ELECTRIC SHOCK HAZARD  
DO NOT TOUCH TERMINALS  
TERMINALS ON BOTH LINE AND  
LOAD SIDES MAY BE ENERGIZED  
IN THE OPEN POSITION  
DC VOLTAGE IS  
ALWAYS PRESENT WHEN  
SOLAR MODULES ARE  
EXPOSED TO SUNLIGHT

If you have any questions about your system, please call  
our Customer Support Team at  
**888.557.6431**  
or visit [freedomforever.com/customer-service](http://freedomforever.com/customer-service)  
This solar PV system was installed by  
**freedom**  
FOREVER  
\*Freedom Forever is a licensed contractor in all states it operates in. For more information visit [freedomforever.com/licenses](http://freedomforever.com/licenses)

**solar**edge

HD wave

P I O

ON

OFF

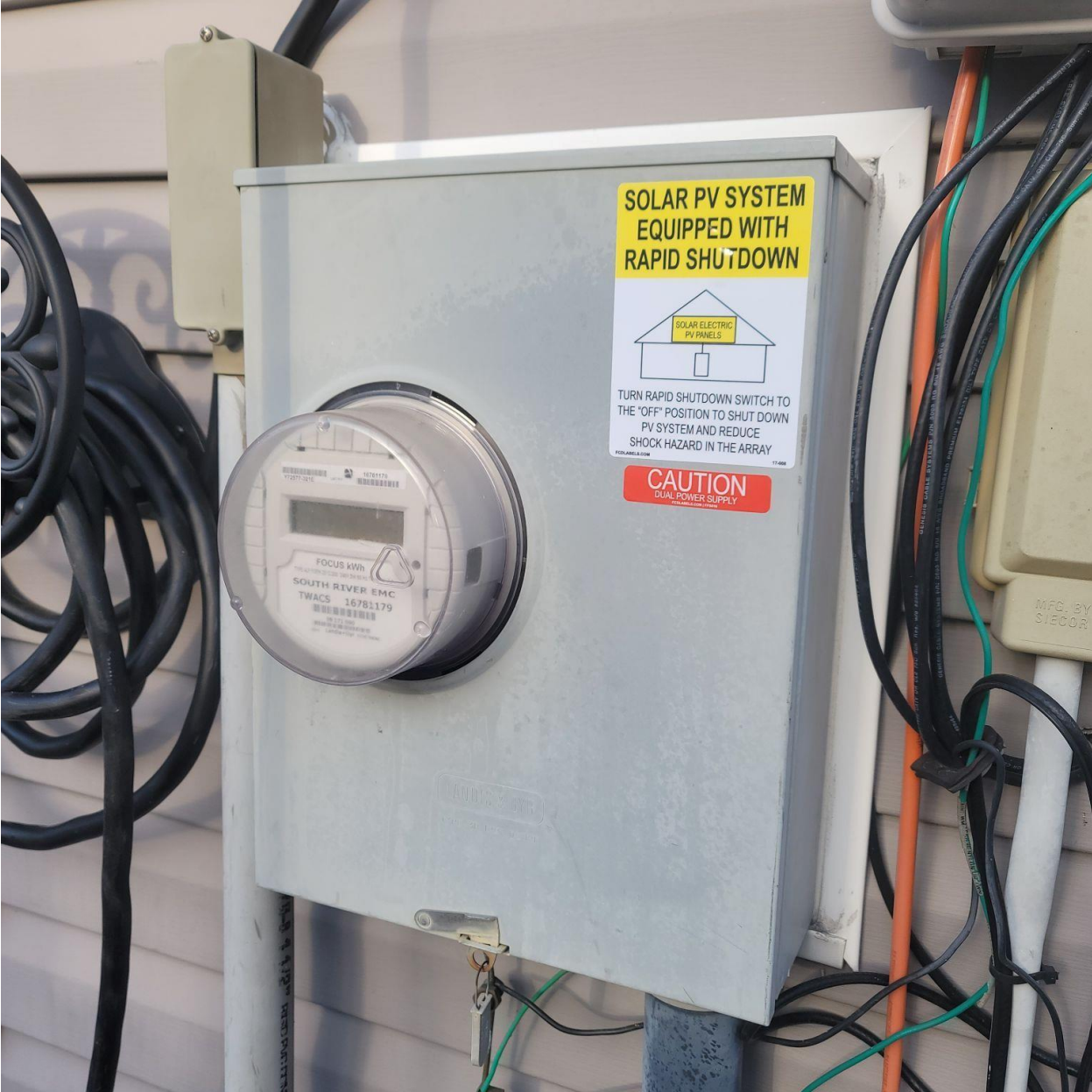
**PV SYSTEM DC DISCONNECT**

MAXIMUM VOLTAGE	48VDC
MAXIMUM CIRCUIT CURRENT	15A
MAXIMUM RATED OUTPUT CURRENT OF THE CHARGE CONTROLLER OR DC TO DC CONVERTER (IF INSTALLED)	13.5A

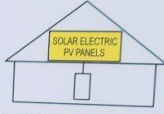
2016-01-10-10:07

solar**edge**





**SOLAR PV SYSTEM  
EQUIPPED WITH  
RAPID SHUTDOWN**



TURN RAPID SHUTDOWN SWITCH TO  
THE "OFF" POSITION TO SHUT DOWN  
PV SYSTEM AND REDUCE  
SHOCK HAZARD IN THE ARRAY

**CAUTION**  
DUAL POWER SUPPLY

FOCUS kWh  
SOUTH RIVER EMC  
TWACS 15781179

MFG. BY  
SIECOR



**CAUTION**  
DUAL POWER SUPPLY

**ELECTRIC SHOCK HAZARD**

DO NOT TOUCH TERMINALS  
TERMINALS ON BOTH THE LINE AND  
LOAD SIDES MAY BE ENERGIZED  
IN THE OPEN POSITION

**HAZARD OF ELECTRIC SHOCK, EXPLOSION, OR ARC FLASH**  
PELIGRO DE DESCARGA ELÉCTRICA, EXPLOSIÓN O  
DESTELLO POR ARQUEO

- Apply appropriate personal protective equipment (PPE) and follow safe electrical work practices. See NFPA 70C.
- This equipment must only be installed and serviced by qualified electrical personnel.
- Never operate energized switch with door open. Keep door fastened.
- Turn off switch before removing or installing fuses or making load side connections.
- Always use a properly rated voltage sensing device at all line and load fuse clips to confirm switch is off.
- Turn off power supplying switch before doing any other work on or inside switch.
- Do not use renewable link fuses in fuse switches.
- Failure to follow these instructions will result in death or serious injury.
- To lock out switch, please padlock keep through hole in topplate and hole in handle.

**PHOTOVOLTAIC SYSTEM  
EQUIPPED WITH  
RAPID SHUTDOWN**

**PHOTOVOLTAIC SYSTEM**  
**AC DISCONNECT**  
OPERATING VOLTAGE: 240V VOLTS  
OPERATING CURRENT: 21.00A AMPS

ON

OFF

3 1/2" COVER







**CAUTION**  
DUAL POWER SUPPLY  
FDCLABELS.COM | 0170101

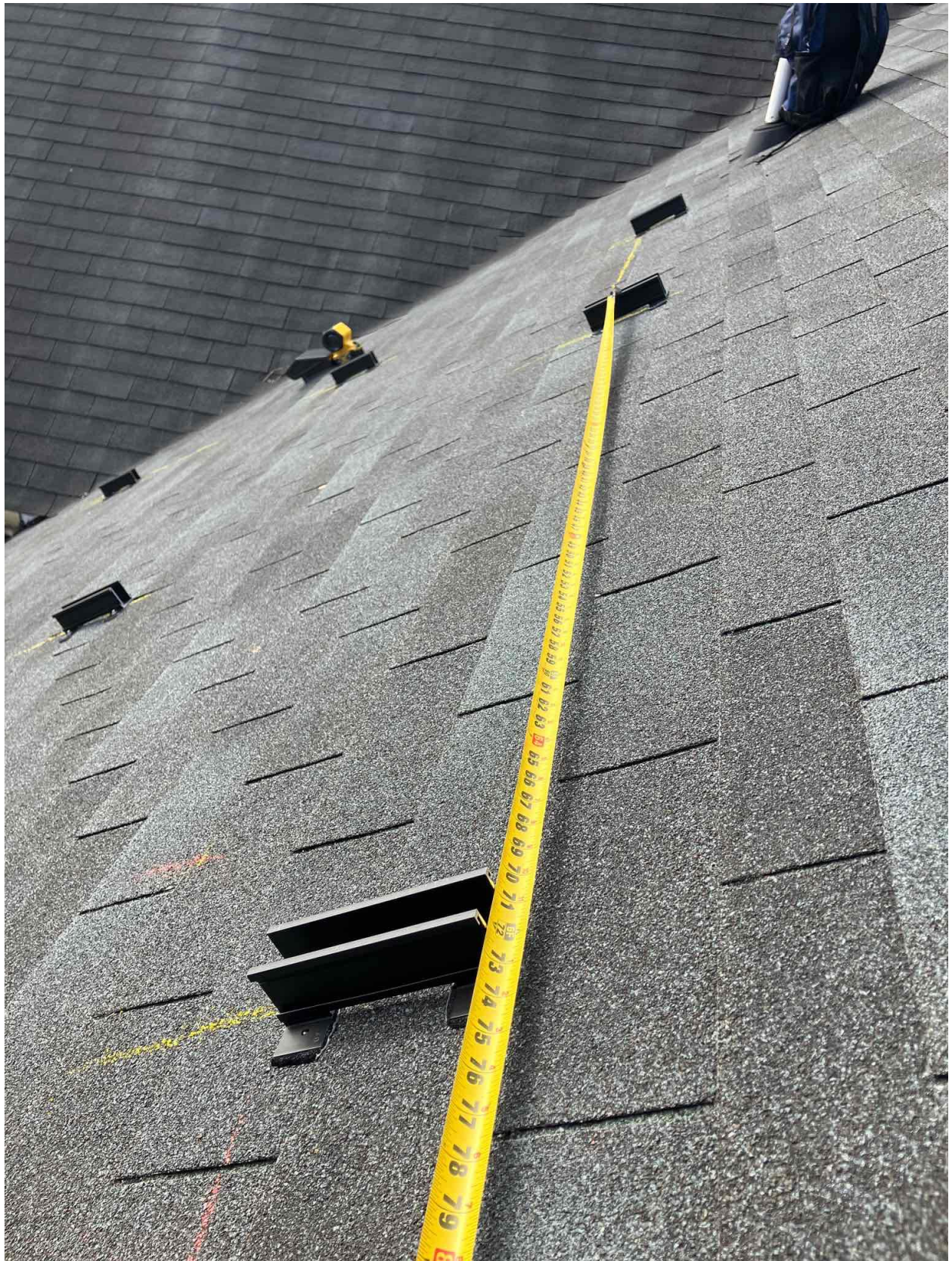
PHOTOVOLTAIC POINT OF INTERCONNECTION.  
WARNING - ELECTRIC SHOCK HAZARD. DO NOT TOUCH TERMINALS. TERMINALS ON BOTH THE LINE AND LOAD SIDE MAY BE ENERGIZED IN THE OPEN POSITION. FOR SERVICE DE-ENERGIZE BOTH SOURCE AND MAIN BREAKER PV POWER SOURCE

MAXIMUM AC OPERATING CURRENT:	21.00A	A
MAXIMUM AC OPERATING VOLTAGE:	240V	V

FDCLABELS.COM | 0170101













01749A5BA-BF



Do Not Remove 1749A5BA-BF



SolarEdge Technologies Ltd.  
SolarEdge Technologies GmbH/  
Werner-Eckert-Straße 6/81829 Munich/Germany



### CAUTION

HOT SURFACES-TO REDUCE THE RISK OF BURNS-DO NOT TOUCH. RISK OF ELECTRIC SHOCK-WHEN THE PHOTOVOLTAIC ARRAY IS EXPOSED TO LIGHT, IT SUPPLIES A DC VOLTAGE TO EQUIPMENT. COVER PV MODULE WITH OPAQUE MATERIAL BEFORE CONNECTING OR DISCONNECTING THIS OPTIMIZER. DURING FAULT, ZERO CURRENT IS SOURCED INTO DC ARRAY BY CONVERTER.

SolarEdge Technologies Ltd.  
Power Optimizer

Solaredge Technologies GmbH/  
Werner-Eckert-Straße 6/81829  
Munich/Germany

**WARNING** ELECTRIC SHOCK HAZARD. THE DC CONDUCTORS OF THIS PHOTOVOLTAIC SYSTEM ARE UNGROUNDED AND MAY BE ENERGIZED.

### AVERTISSEMENT

RISQUE DE CHOC ELECTRIQUE: QUAND LE CHAMP PHOTOVOLTAIQUE EST EXPOSE A LA LUMIERE, UNE TENSION CC EST FOURNIE A CET EQUIPEMENT. SURFACES CHAUDES: NE PAS TOUCHER, AFIN DE REDUIRE LES RISQUES DE BRULURES LE COURANT DE RETOUR INJECTE PAR LE CONVERTISSEUR EN CAS DE DEFAILLANCE DANS LE MODULE PV EST TOUJOURS NUL.









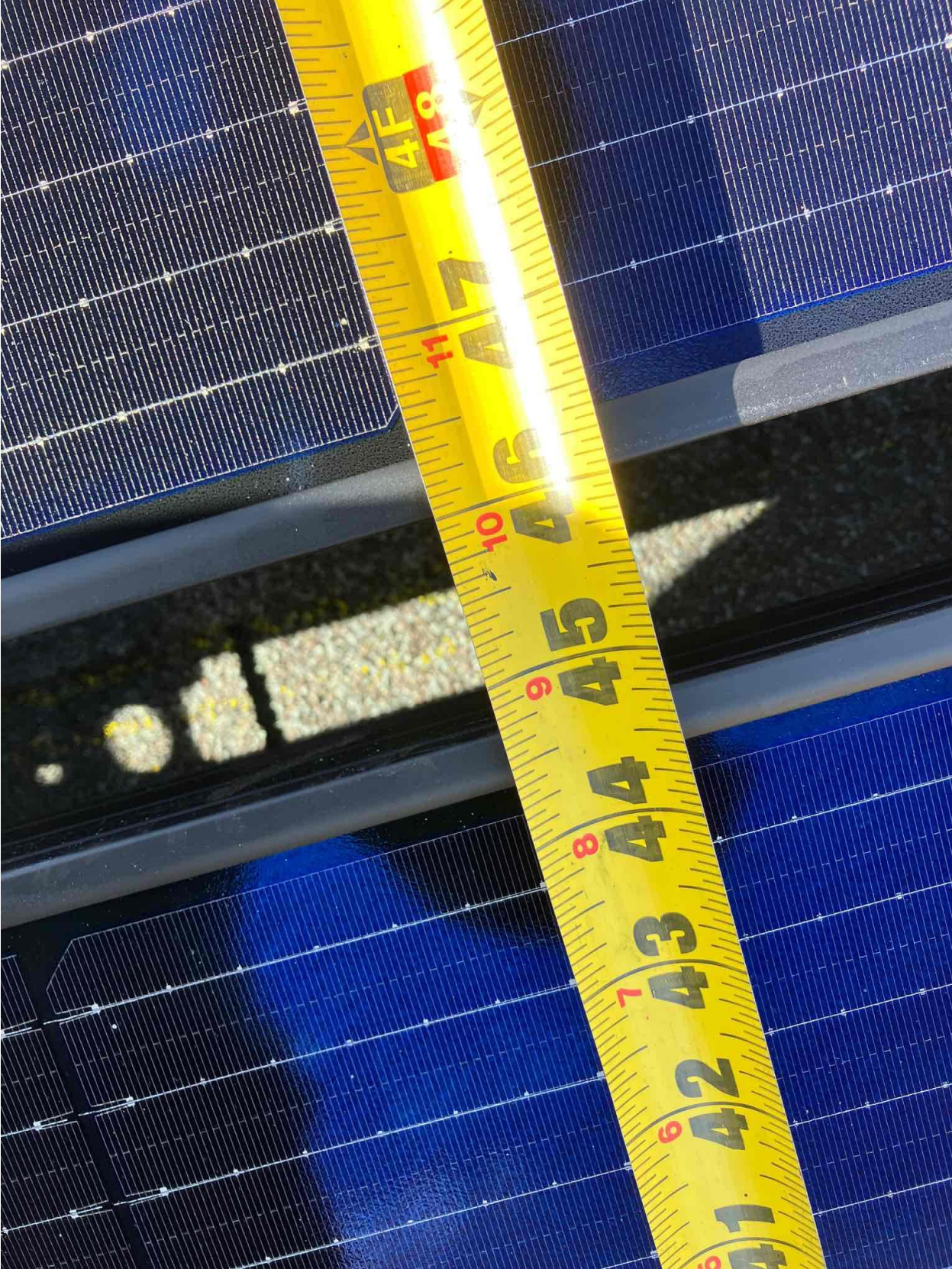




Erroll C. Person  
7211 Elliott Bridge RD  
Spring Lake, NC 28390

11-16-23

freedom!  
Model No. FT-28390  
WARNING: ELECTRIC SHOCK  
CE









Erroll C. Person  
7711 Elliott Bridge RD  
Spring Lake, NC 28380  
11-16-23 The Volt

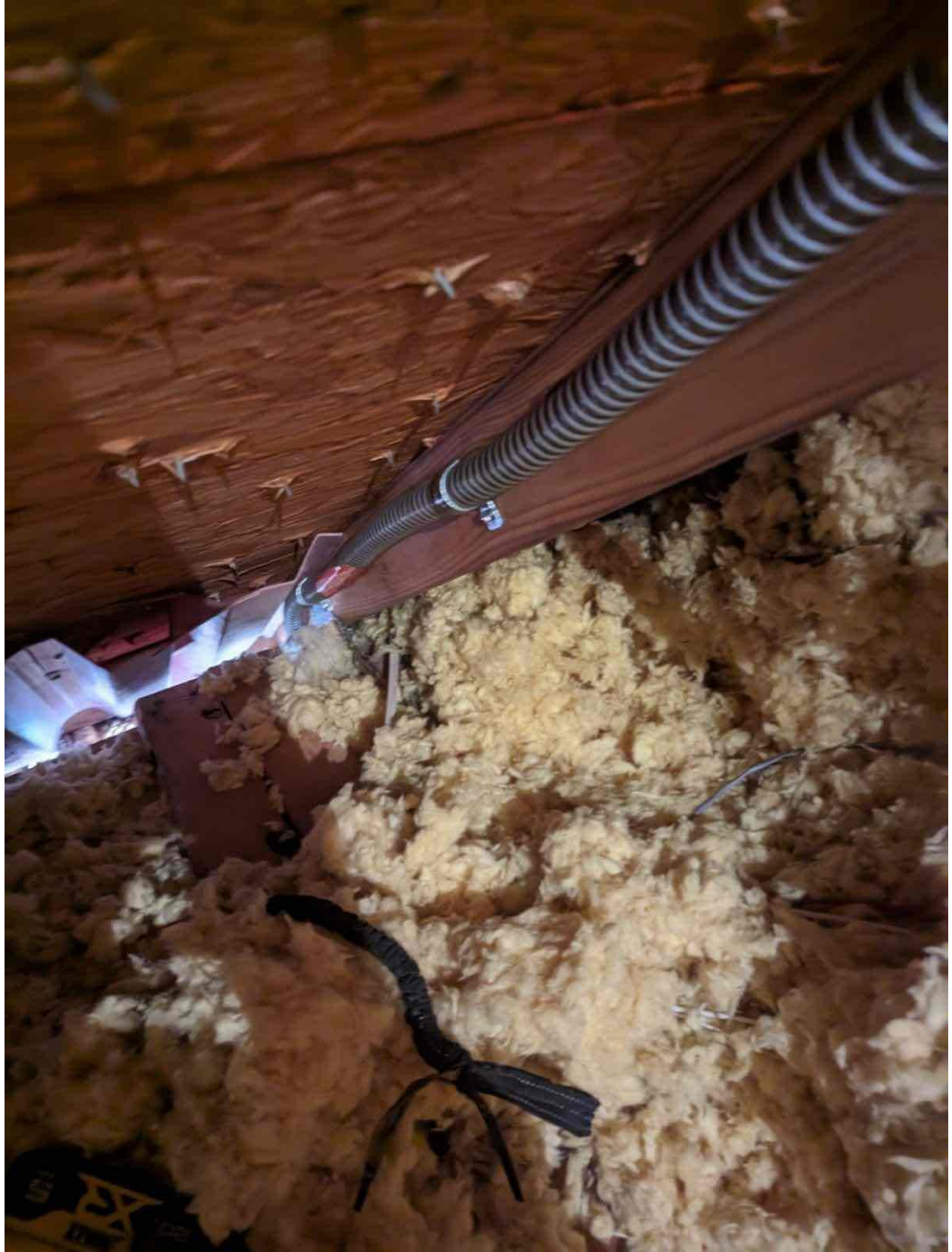




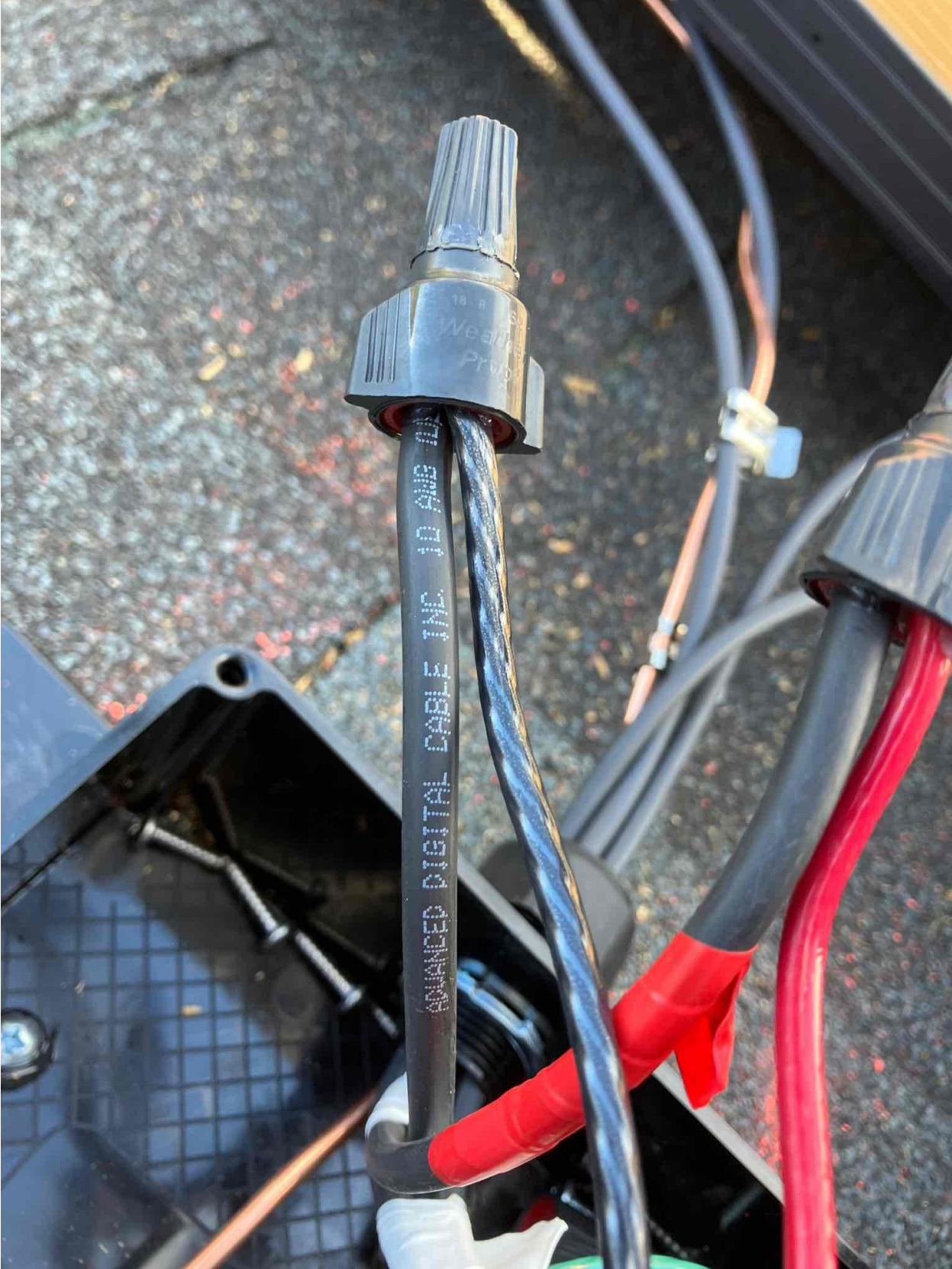










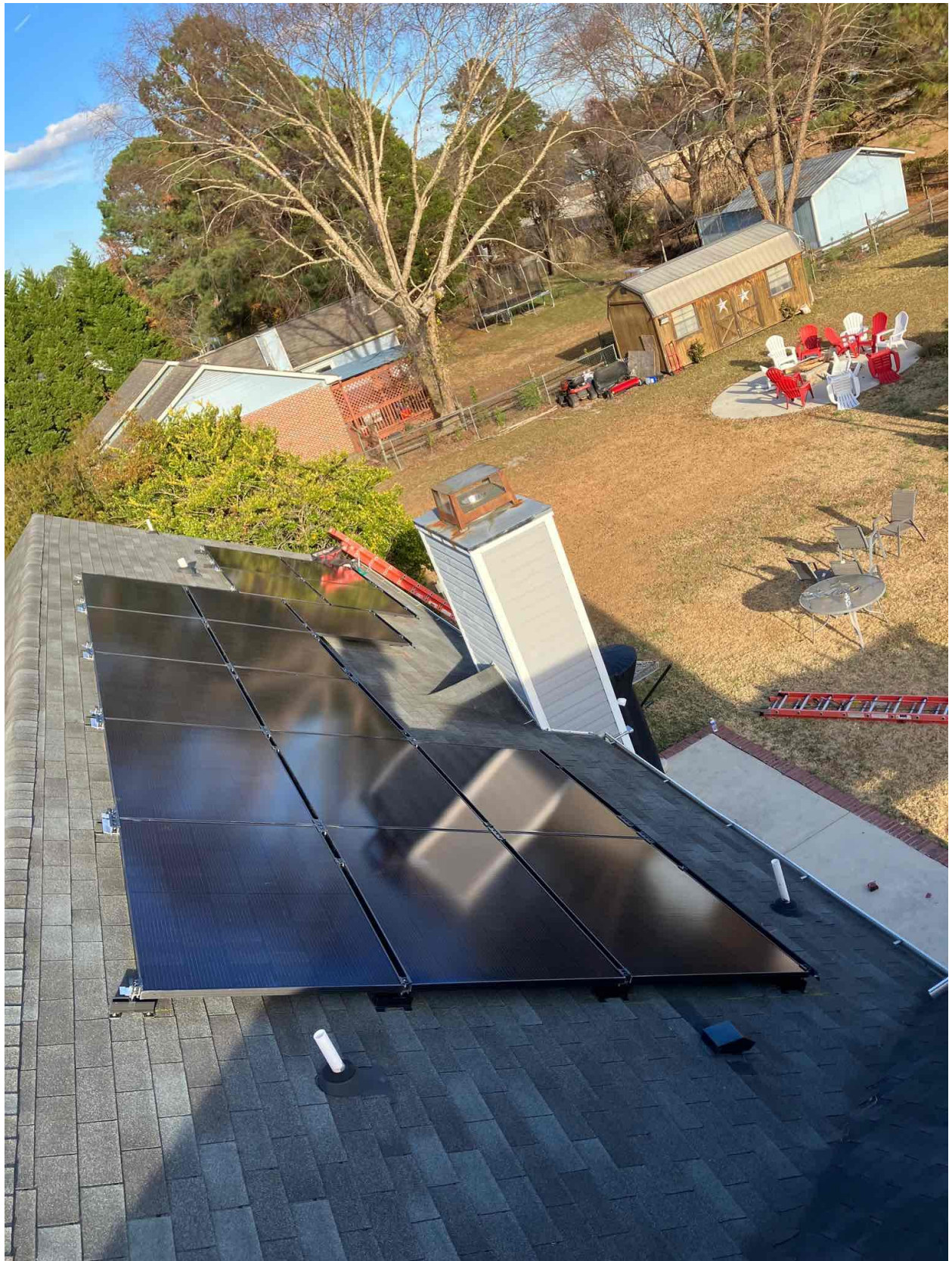














**solar edge** SE5000H - US  
**Grid Support Utility Interactive  
Non-Isolated Photovoltaic Inverter**

Operating Voltage Range 270 - 480Vdc  
Max Input Current 16.5A dc  
Max Continuous Output Power 6000Wac  
Voltage Min - Nom - Max 211 - 240 - 254Vac  
Max Continuous Output Current Vsc  
21Aac  
Max Output Fault Current 72Aac  
Max Utility Backfeed Current 0Aac  
Frequency Min - Nom - Max 59.3 - 60.0 - 60.5Hz  
Output Power Factor +/- 0.85 - 1  
Max Ambient Temperature 60 C  
Enclosure IP65 / Type 3R  
With integrated ground fault protection per NEC 690.35 (G)  
Type 1 Photovoltaic Arc-Fault Circuit- Protection  
COMPLIES WITH SUPPLEMENTAL INTERCONNECTION REQUIREMENTS  
Wi-Fi Password: H194Nog8  
Activation: sXYI JqQ7 JrG1 evCo OBxA 08st 1G0 =

WiFi MAC:  
84:D6:C5:60:C0:F1  
ZigBee MAC:



Intertek  
4004590

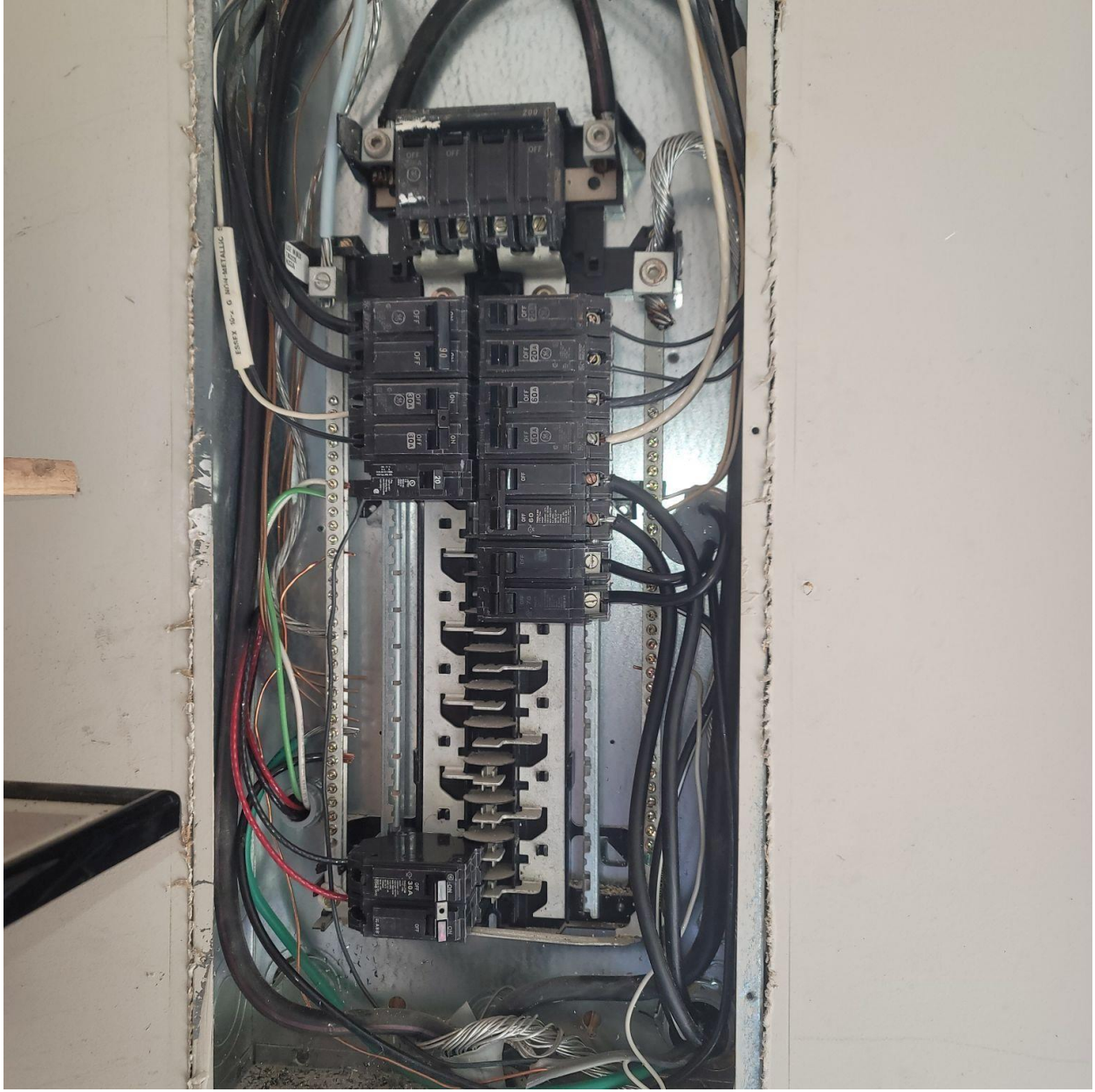
PN: SE5000H - US000BE14  
SN: SM2323 - 074138A45 - 56

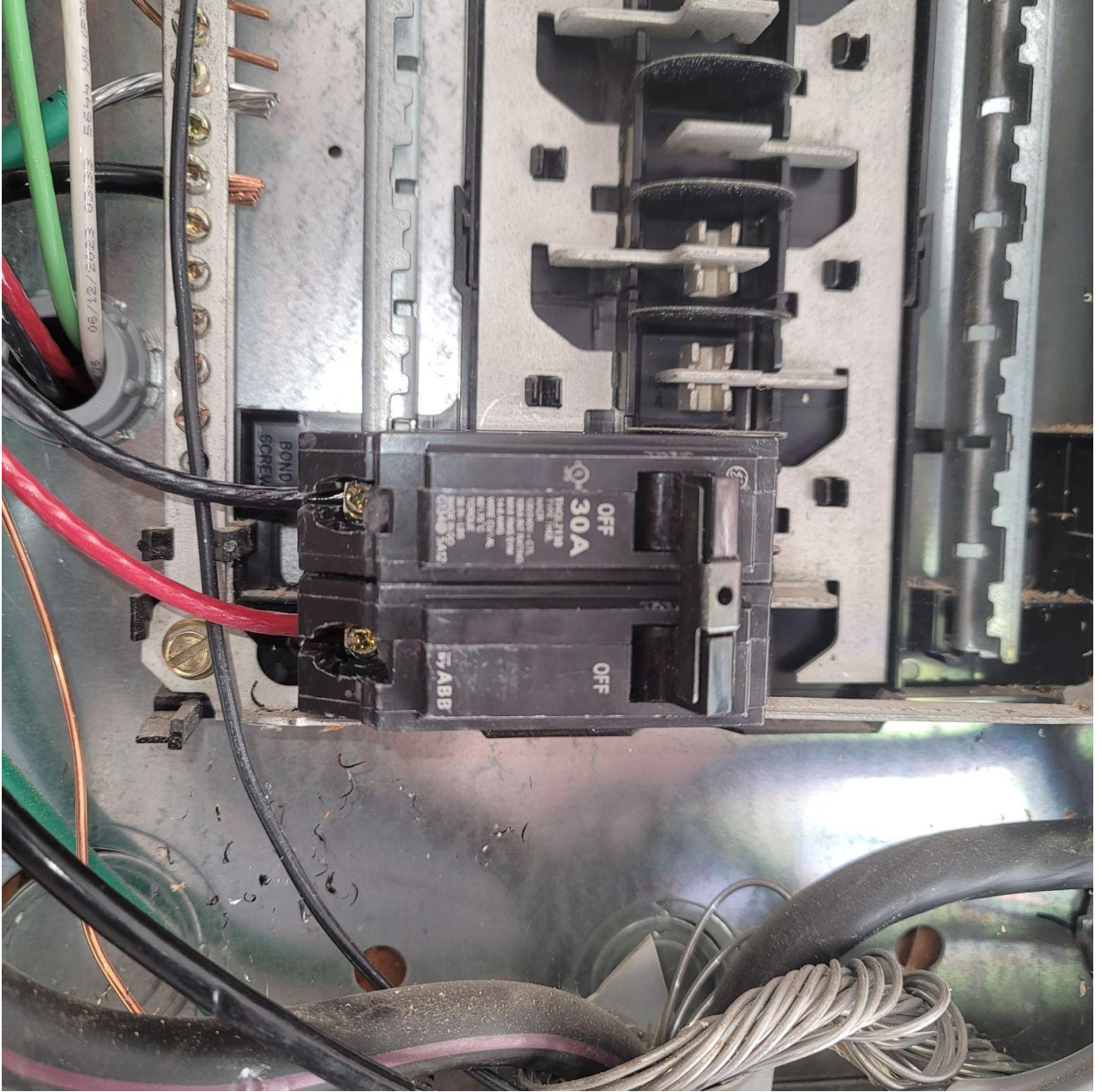


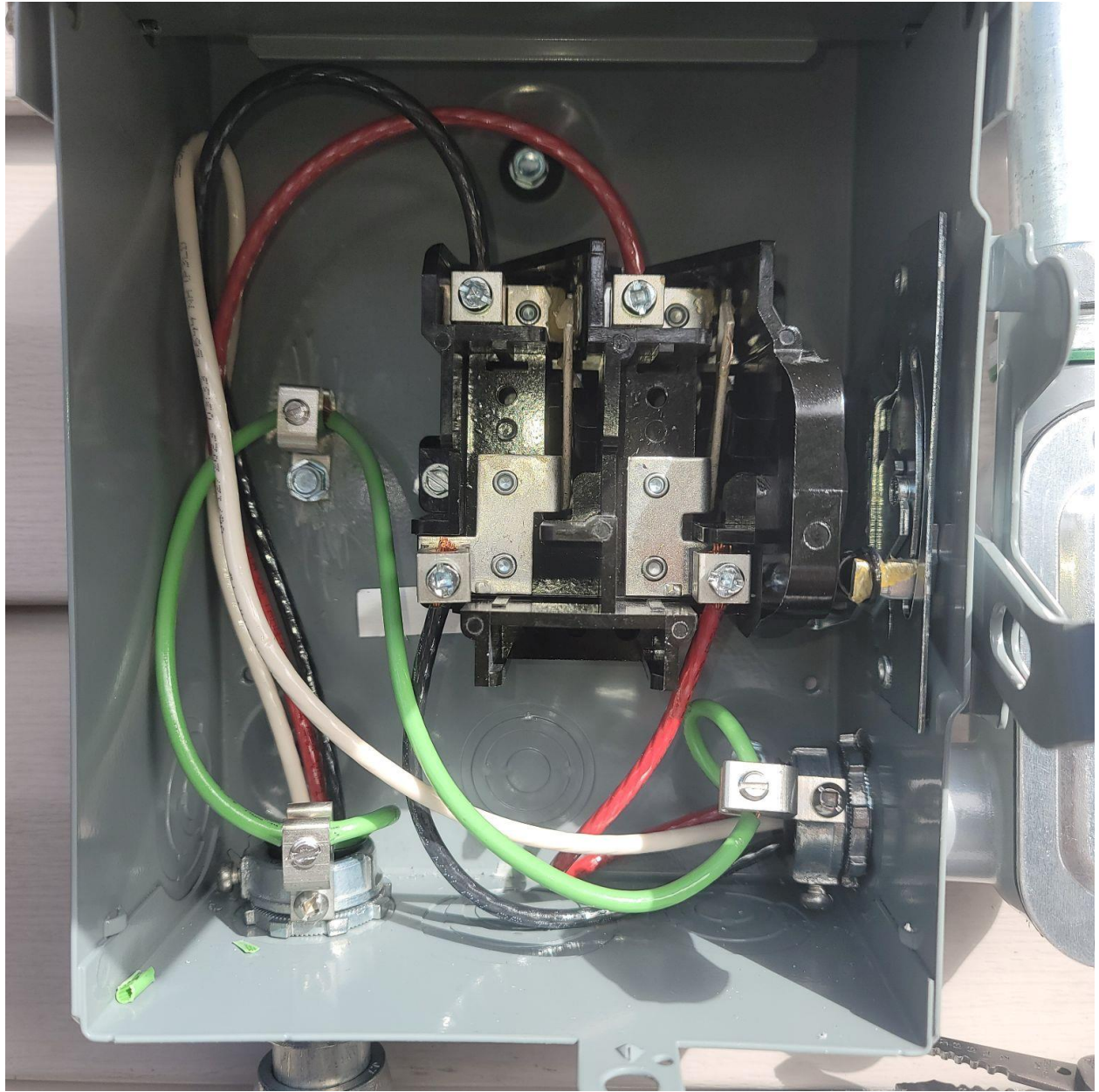
**solar edge**



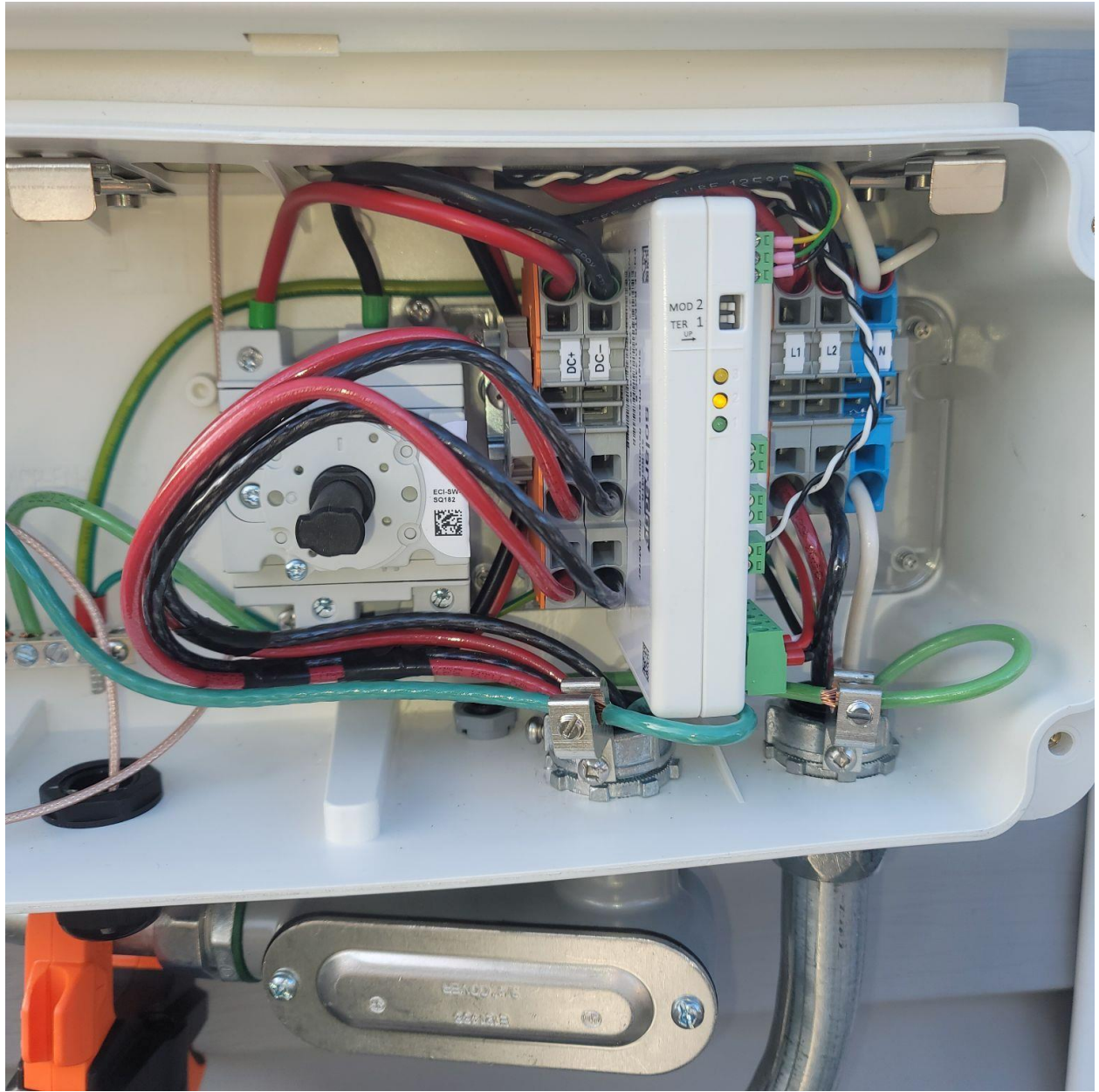
**PHOTOVOLTAIC RAPID  
SHUTDOWN SYSTEM**













TURN RAPID SHUTDOWN SWITCH TO  
THE "OFF" POSITION TO SHUT DOWN  
PV SYSTEM AND REDUCE  
SHOCK HAZARD IN THE ARRAY

FCDLABELS.COM

17-008



