







2000V 1000V 500V  
Wet Res -40°C VW-1 Non-Flam

GMB231



6008225

© 2008 by H. H. H. H. H.





66  
65  
64  
63  
62  
61  
60  
59  
58  
57  
56  
55  
54  
53  
52  
51  
50  
49  
48  
47  
46  
45  
44  
43  
42  
41  
40  
39  
38  
37  
36  
35  
34  
33  
32  
31  
30  
29  
28  
27  
26  
25  
24  
23  
22  
21  
20  
19  
18  
17  
16  
15  
14  
13  
12  
11  
10  
9  
8  
7  
6  
5  
4  
3  
2  
1





32 31 30 29 28 27 26 25 24 23 22 21 20 19 18 17 16 15 14 13 12 11 10 9 8 7 6 5 4 3 2













































**CAUTION: BURIED ELECTRIC LINE BELOW**

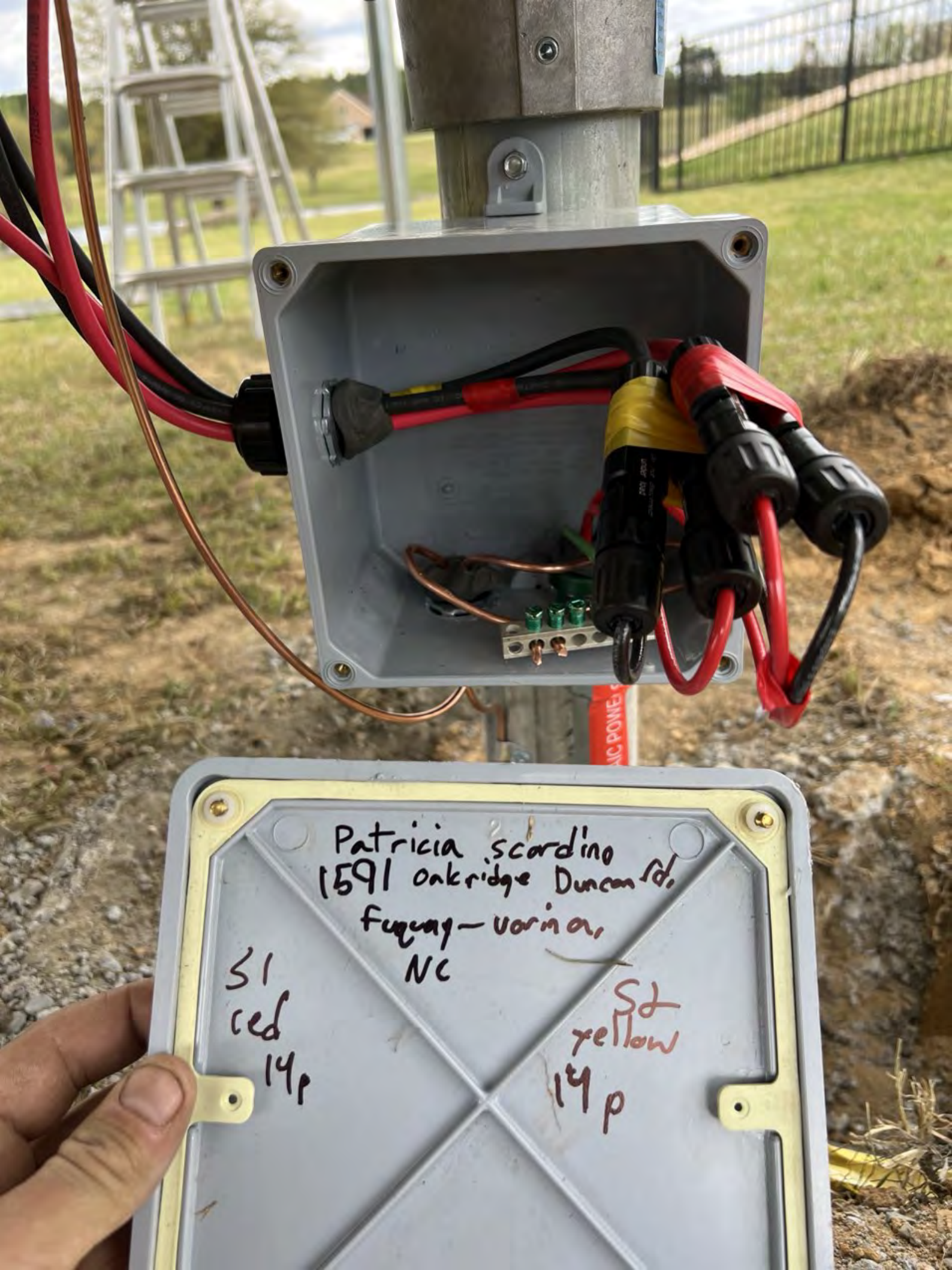




PHOTOVOLTAIC POWER SOURCE

PHOTOVOLTAIC POWER SOURCE





Patricia Scardino  
1591 Onkridge Duncan Rd,  
Fuquay-Varina,  
NC

S1  
red  
14p

S2  
yellow  
14p





DO NOT DISCONNECT  
WIRE FROM

WIRE & CABLE





ADVANCED DIGITAL  
10 AWG (UL)

JB 6x6x4  
MADE IN CANADA  
VOLUME 130 CU. IN.  
NET LOCATION  
CONNECTION RESISTANT "DUST TIGHT"  
TYPE 1A, 1A1, 1A2, 1A3, 1A4  
FOR USE ON METALLIC CONDUIT  
SIZE 1/2 IN. TO 2 IN. IN DIA.  
REFER TO INSTALLATION  
GENERAL

11AC POW













**MISSION SOLAR**  
E-ENERGY

Serial No. **M230314-A1045**

**M8E396SX9R**

Model Number	M8E396SX9R
Rated Maximum Power	[W] <b>396 (-0/+3%)</b>
Open-Circuit Voltage	[V] <b>48.2</b>
Voltage at Pmax	[V] <b>37.0</b>
Short-Circuit Current	[A] <b>11.24</b>
Current at Pmax	[V] <b>1000</b>
Max. System Voltage	[A] <b>20</b>
Max. Series overcurrent protective device (where required) fuse rating	AM=1.5 E=1000W/m <sup>2</sup> Tc=25°C
Standard test condition	

For field connections, use Cu only 12AWG (US, CANADA), 4mm<sup>2</sup> (EU, Asia) wires insulated for a minimum of 90°C, rated for wet conditions and resistant to ultra violet radiation (where exposed). See installation manual for PV connector details and compatibility. Avertissement Risque de choc électrique. Ce module produit des tensions élevées dans la lumière du soleil. Risque électrique peut choquer, brûler ou de provoquer la mort. Ne pas toucher la borne.

Fire Rating: Type 1  
Class of Equipment: Class II  
Design Load: Minimum 3600 Pa front and minimum 1600 Pa back load

Warning  
PV modules generate voltage even with very weak light. Do not open the junction box. Les modules PV produisent tension même en basse lumière. Ne pas ouvrir la boîte de jonction.

Address:  
8303 S. New Braunfels Ave.  
San Antonio, TX 78235  
**ASSEMBLED IN THE USA**

UL LISTED  
TUV

MADE IN THE USA



















Do Not Remove

18100111-3A



SolarEdge Technologies Ltd.  
SolarEdge Technologies GmbH/  
Werner-Eckert-Straße 6/81829 Munich/Germany



SolarEdge Technologies Ltd.  
Power Optimizer

SolarEdge Technologies GmbH/  
Werner-Eckert-Straße 6/81829  
Munich/Germany

### CAUTION

HOT SURFACES-TO REDUCE THE RISK OF BURNS-DO NOT TOUCH. RISK OF ELECTRIC SHOCK-WHEN THE PHOTOVOLTAIC ARRAY IS EXPOSED TO LIGHT, IT SUPPLIES A DC VOLTAGE TO EQUIPMENT. COVER PV MODULE WITH OPAQUE MATERIAL BEFORE CONNECTING OR DISCONNECTING THIS OPTIMIZER. DURING FAULT, ZERO CURRENT IS SOURCED INTO DC ARRAY BY CONVERTER.

**WARNING** ELECTRIC SHOCK HAZARD. THE DC CONDUCTORS OF THIS PHOTOVOLTAIC SYSTEM ARE UNGROUNDED AND MAY BE ENERGIZED.

### AVERTISSEMENT



RISQUE DE CHOC ELECTRIQUE: QUAND LE CHAMP PHOTOVOLTAIQUE EST EXPOSE A LA LUMIERE, UNE TENSION CC EST FOURNIE A CET EQUIPEMENT. SURFACES CHAUDES: NE PAS TOUCHER, AFIN DE REDUIRE LES RISQUES DE BRULURES LE COURANT DE RETOUR INJECTE PAR LE CONVERTISSEUR EN CAS DE DEFAILLANCE DANS LE MODULE PV EST TOUJOURS NUL.











GMB231

CE US

5003225

Certified to AS 1553 2010

WARNING

Warning  
Do not touch  
a work surface  
For other parts







Do Not Remove

LEADER OF QUALITY

SolarEdge Technologies Ltd  
Power Optimizer

**CAUTION**  
KEEP HANDS AWAY FROM THE RISK OF ELECTRIC SHOCK. NEVER TOUCH PHOTOVOLTAIC ARRAY OR EXPOSED WIRING. ALWAYS USE PROPERLY TRAINED PERSONNEL TO INSTALL AND MAINTAIN THIS EQUIPMENT. COVER PV MODULES WITH OPACQUE MATERIAL BEFORE CONNECTING OR DISCONNECTING THIS OPTIMIZER. ALWAYS ENSURE CURRENT IS SOURCED INTO DC ARRAY BY CONVERTER.

**WARNING** ELECTRIC SHOCK HAZARD: THE DC CONDUCTORS OF THIS PHOTOVOLTAIC SYSTEM ARE UNINSULATED AND MAY BE ENERGIZED.

**AVERTISSEMENT**  
RISQUE DE CHOC ÉLECTRIQUE. QUAND LE CHAMP PHOTOVOLTAÏQUE EST EXPOSÉ À LA LUMIÈRE, TOUT PERSONNE NE DOIT TOUCHER À CE QUÉLQUE ÉQUIPEMENT. TOUJOURS LES BRAS EN BRASSURES LE COUVRANT LORS DE L'INSTALLATION DANS LE MODULE PV ET

FC

100%

100%







IRONRIDGE



























"B"



MAIN

Pool  
Receptical  
GFI

1  
2  
3  
4  
5  
6  
7



2  
4  
6  
8

POOL  
PANEL





**SIEMENS**  
RAPID SHUTDOWN SWITCH FOR SOLAR PV SYSTEM  
**ON**  
OFF  
SOLAR PV SYSTEM EQUIPPED WITH RAPID SHUTDOWN  
WARNING: DO NOT DISCONNECT

**CAUTION**  
SOLAR ELECTRIC SYSTEM CONNECTED  
WARNING  
SOLAR POINT OF INTERCONNECTION

**CAUTION**  
SOLAR ELECTRIC SYSTEM CONNECTED  
WARNING  
PHOTOVOLTAIC SYSTEM kWh METER

Small grey electrical enclosure with wires connected to it.











TARTER  
LANDSCAPE & HARDWARE

PROFORM  
ALL P...

NO PARKING







solar**edge**

 HD wave

P I O

DC DISCONNECT

ON

OFF





**solar**edge

### StorEdge Connection Unit



Max DC Voltage (PV/Battery)	480 Vdc
Max DC Current (PV)	62 Adc
Max DC Power (PV)	23.2 kWdc
Max Continuous DC Current (Battery)	31 Adc
Max Continuous DC Power (Battery)	11.6 kWdc
Max AC Voltage	264 Vac
AC-Single Phase Frequency	50/60 Hz
Max AC Current (Grid)	48 Aac

For more details refer to the installation guide

Patent marketing notice: see [WWW.SOLAREEDGE.COM/patent](http://WWW.SOLAREEDGE.COM/patent)

DCD-1PH-US-P2H-F-I

PN:

SJ1323-1912180BA-EC

SN:

Made in China



Intertek  
4004590



**solar**edge

### StorEdge Connection Unit



Max AC Current (Smart EV Charger)	40 Aac
Max Continuous Output Power (Smart EV Charger)	9600 W
Max Battery Energy Storage	32 kWh
Number of AC phases	L1, L2, N
Maximum AC short circuit current	74 Aac
Weight	30.2 / 13.7 lbs/kg
Ambient Temperature:	-40°C ..60°C
Enclosure Rating:	IP65/ Type 4X

For more details refer to the installation guide

Patent marketing notice: see [WWW.SOLAREEDGE.COM/patent](http://WWW.SOLAREEDGE.COM/patent)

Use 90°C copper PV wires only.  
Revenue Grade ANSI C12.20  
PHOTOVOLTAIC RAPID SHUTDOWN SYSTEM

DCD-1PH-US-P2H-F-I

PN:

SJ1323-1912180BA-EC

SN:

Made in China



Intertek  
4004590






**solar edge** SE11400H - US  
**Grid Support Utility Interactive  
 Non-Isolated Photovoltaic Inverter**

Operating Voltage Range 380 - 480Vac  
 Max Input Current 30Acs  
 Max Continuous Output Power 10000Wac @ 208V 11400Wac @ 240V  
 Voltage Min - Nom - Max 183 - 208 - 228Vac  
 211 - 240 - 264Vac  
 Max Continuous Output Current 48.5Aac @ 208V 47.5Aac @ 240V  
 Max Output Fault Current 74Aac  
 Max Utility Backfeed Current 0Aac  
 Frequency Min - Nom - Max 59.3 - 60.0 - 60.5Hz  
 Output Power Factor +/- 0.85 - 1  
 Max Ambient Temperature 60 C  
 Enclosure IP65 / Type 3N  
 With integrated ground fault protection per NEC 890.35 (C)  
 Type I Photovoltaic Arc-Fault Circuit-Protection

WI - FI Password: Yo2w7Q4J  
 Activation: 2gW5 yUSt ZYuj wV1f ugSd Dulx jvw =


WiFi MAC:  
 84:D6:C5:4D:0E:70  
 ZigBee MAC:



ETL US  
 Intertek  
 4004590

PN: SE11400H - USSNBBL15  
 SN: SJ1223 - 07419904F - 6C



**solar edge** 

**PHOTOVOLTAIC RAPID  
 SHUTDOWN SYSTEM**

**solar edge** 

ETL LISTED  
 CONFORMS TO  
 ANSI/UL  
 CERTIFIED TO  
 CAN/CSA  
 C22.1 NO. 67

**ETL US**  
 Intertek  
 4004590

7419904F-6C

Complies with part 15 of the FCC Rules. Operation is subject to the following two conditions:  
 1. This device must not cause harmful interference and  
 2. This device must accept any interference received, including interference that may  
 cause undesired operation.

www.solar-edge.com/inverter  
 Made in China



solar**edge**

HD wave





 **CAUTION**   
SOLAR ELECTRIC SYSTEM CONNECTED

 **WARNING**  
DUAL POWER SUPPLY  
SOURCES: UTILITY GRID  
AND PV SOLAR  
ELECTRIC SYSTEM

**WARNING**  
Residual voltage may cause death, serious injury or substantial property damage. Turn off power supplying the equipment before working inside.



Wiring personnel: Disconnect or isolate, because persons in other subdivisions are in progress. Disconnect all circuits at energy source before work on the system.



**PHOTOVOLTAIC  
SYSTEM kWh METER**



























# SIEMENS

Cat. No. HF222NR  
60 Amps Maximum  
Type 3R

Fusible Heavy Duty Safety Switch  
240 Volts AC (V~) Maximum  
Rainproof  
Type VBII  
250 Volts DC (V-) Maximum  
Suitable for use as Service Equipment



### Horsepower Ratings

	240 VAC 1Ø	240 VAC <sup>2</sup> 3Ø	250 VDC
Std. HP (Std. Fuse) <sup>1</sup>	3	7 1/2	10
Max. HP (Time Delay)	10	15	—

Continuous load current not to exceed 80% of the rating of fuses employed in other than motor circuits.

### Fuse and Short Circuit Information

When used with Class K fuses, Class H fuses or a UL Listed Circuit Breaker rated for 10,000 amperes, RMS symmetrical, 240 volts maximum, this switch is suitable for use on a circuit capable of delivering not more than 10,000 amperes, RMS symmetrical, 240 volts, maximum.

When used with Class R fuses and Class R fuse clip kit HR612 properly installed, this switch is suitable for use on a circuit capable of delivering not more than 200,000 amperes, RMS symmetrical, 240 volts maximum.

**Danger** – Unless Class R fuses are used, this switch may present a risk of fire and injury to persons if installed on circuits capable of delivering more than 10,000 amperes, RMS symmetrical.

When used with fuses marked with DC ratings, this switch is suitable for use on a circuit capable of delivering not more than the DC interrupting rating marked on the fuse, at the DC voltage rating marked on the fuse, up to a maximum of 10,000 amperes, 250 volts DC.

**Danger** – Unless fuses marked for an interrupting rating of 10,000 amperes at 250 volts DC are used, this switch may present a risk of fire and injury to persons if installed on circuits capable of delivering more than 10,000 amperes.

Renewable link fuses are not recommended.



### ▲ DANGER

#### Hazardous voltage.

#### Will cause death or serious injury.

- Disconnect and lock out power supplying this switch before working on this switch.
- Turn off switch before removing or installing fuses if so equipped.
- Always use a properly rated voltage sensing device on all fuse clips (Fusible) or all load side terminals (Non-Fusible) to confirm switch is off.
- Close or replace cover before turning power on.

### Terminal & Wire Information

### USE 60°C / 75°C COPPER OR ALUMINUM WIRE

Description	Wire Range	Wire Tightening Torque	Lug Mounting Torque
Line, Load & Main Neutral	14-2 AWG	35 lb-ins. 14-10 AWG / 40 lb-ins. 8 AWG 45 lb-ins. 6-4 AWG / 50 lb-ins. 3-2 AWG	80 lb-ins.
Service Ground	14-4 AWG	35 lb-ins. 14-10 AWG / 40 lb-ins. 8 AWG 45 lb-ins. 6-4 AWG	24 lb-ins.

Inspection record number:

### UL Listed Compression Lugs

(Refer to manufacturers instructions for proper installation)<sup>1</sup>

Wire Size (AWG OR kcmil)	Burdyn		Thomas & Betts		Isco	
	Cu Only	Cu / Al	Cu Only	Cu / Al	Cu Only	Cu / Al
14-10			256-30695-1352	60097		
8	YA8C-L1 Box YA8C-TC14	YA8CA3	54130 54930BE	60102 61102		ACL-8
6	YA6C-L Box YA6C	YA6CA1	54105 54905BE	60107 61107	CRB-6 CRB-6L	ACL-6
4			54106	61112	CRB-4	

### Accessories

Aux. Switch (1NO - 1NC)	HA161234	Neutral	HN623	Class R Fuse Kit (Rejects Class H & K Fuses)	HR612
Aux. Switch (2NO - 2NC)	HA261234	Ground Lug Kit (Wire Range 14-4 AWG)	HG61234	Wire Grip Kit (CU)	HLC612
Low Voltage Aux. Sw. (1NO - 1NC)	HA361234	Isolated Ground Lug Kit	HG261234	Hub Kits ECHS075/HS075 (3/4") ECHS100/HS100 (1") ECHS125/HS125 (1 1/4")	
Compression Lug Neutral Barrier Kit	HCL623	Fuse Puller (3 per kit)	HP62	Shield Kit	HSK62SSW

### Replacement Parts

Line Base	HFB22	Wire Grip Kit (AL)	HL612	Handle / Handle Guard	HH6123A
Load Base	HBB22	Mechanism	HM6123	Door	HF222NRDOOR

Protected by one or more of the following US Patents: 6,134,979, 6,356,460, 5,945,650, 5,990,439.

<sup>1</sup> Suitable for 3-Phase, 3-Wire, Grounded B-Phase Systems

<sup>2</sup> The starting current of motors more than the standard horsepower or kilowatt ratings may require the use of fuses with appropriate time delay characteristics.

<sup>3</sup> If compression lugs are used for the neutral, order compression lug neutral barrier kit HCL623.

For questions on this device  
please call 1-800-241-4453

Siemens Industry, Inc.  
Peachtree Corners, GA 30092 USA  
<http://www.usa.siemens.com/powerdistribution>  
Assembled in Mexico

Pc. No. 502086B09

J2





**⚠ DANGER**

Hazardous Voltage. Will cause death or serious injury.  
• Do not open this shield unless the power supplying this switch is OFF.  
• Snap shield to closed position before turning power ON.

CLOSED SWITCH  
61502

**Edison**  
TIME-DELAY  
DUAL-ELEMENT  
CURRENT-LIMITING  
CLASS RK5 FUSE  
**ECNR60**  
250Vac or less  
AC IR 200kA RMS  
125 VDC 20kA

**Edison**  
TIME-DELAY  
DUAL-ELEMENT  
CURRENT-LIMITING  
CLASS RK5 FUSE  
**ECNR60**  
250Vac or less  
AC IR 200kA RMS  
125 VDC 20kA



# SIEMENS

**RAPID SHUTDOWN  
SWITCH FOR  
SOLAR PV SYSTEM**

**ON**

Heavy Duty  
Safety Switch  
80A 240VAC, 250VDC  
Horsepower Rated



**⚠ DANGER**

Hazardous Voltage  
Will cause death or  
serious injury.  
Turn off power carefully  
and lock. "Disconnect"  
power before working on  
the system. "Open" will  
release locking pin and  
allow switching motion to  
begin.

**OFF**

**SOLAR PV SYSTEM  
EQUIPPED WITH  
RAPID SHUTDOWN**



TURN RAPID SHUTDOWN SWITCH TO  
THE "OFF" POSITION TO SHUT DOWN  
PV SYSTEM AND REDUCE  
SHOCK HAZARD IN THE ARRAY



**WARNING**

ELECTRIC SHOCK HAZARD

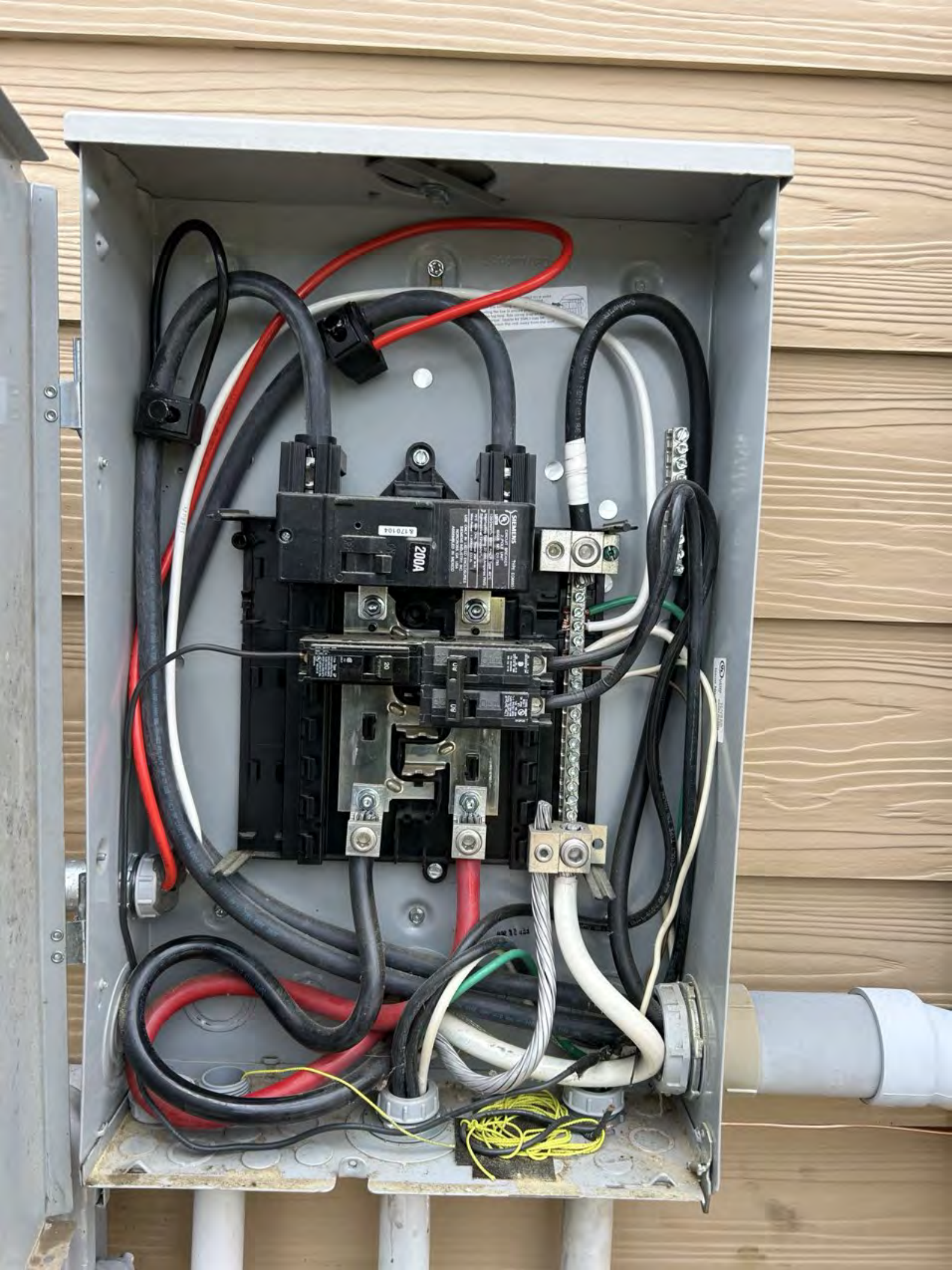
TERMINALS ON THE LINE AND  
LOAD SIDES MAY BE ENERGIZED  
IN THE OPEN POSITION

**AC DISCONNECT**

PHOTOVOLTIC SYSTEM  
POWER SOURCE

RATED AC OUTPUT CURRENT **47.5** AMPS  
NOMINAL OPERATING AC VOLTAGE **240** VOLTS









SIEMENS

TYPE EQ8000

17 EQ17 (U) 945 2

UL LISTED FM E10703 PANEL Issue No





wall and  
torque the  
...ing

50

7705505

... OF THIS FIT

ENCLOSURE





**SIEMENS** TYPE EQ8695  
**UL** LISTED  
 CIRCUIT BREAKER  
 2 POLE UNIT  
 ISSUE NO. DY-785  
 120/240V~ 60Hz HACR Type 40°C  
 Interrupting Rating 22,000 Amperes RMS  
 Symmetrical 120/240V~  
 75°C Wire Only, Torque 250 lb-in  
 Wire Range - 1-300kcmil CU-AL  
 USE ONLY IN LISTED ENCLOSURES  
 SIEMENS INDUSTRY, INC.  
 NORCROSS, GA USA  
 ASSEMBLED IN MEXICO

200A

8170104

ON OFF

518203 200A  
 655-1  
 2 Pole  
 Interrupting Rating  
 22,000 A RMS  
 120/240 VAC  
 60 Hz  
 40°C  
 CU-AL 1-300 kcmil

20

CU/AL 60/75°C WIRE  
 AWG 14-43  
 IN. LBS. 25

1 Pole Type 2P  
 Interrupting Rating  
 MAXIMUM 5000 A RMS  
 10,000 100/200 V.A.C.  
 60/50 Hz 50/60 Hz  
 40°C  
 120/240 VAC  
 60 Hz  
 40°C  
 1-300 kcmil CU, AL  
 NB-0118  
 Siemens

08 08



# SIEMENS

## Outdoor Load Center

Catalog Number  
**PW0816B1200TC**  
**PW0816L1200TC**

Enclosure  
**Type 3R**

**RATINGS:**  
 100A MAXIMUM - SEE MAIN BREAKER RATING IF USED.  
 100/240 V— 60 HZ, 10 3W  
 208Y/120 V— 60 HZ, 10 3W

FOR INSTALLATION BY A QUALIFIED PERSON IN ACCORDANCE WITH ALL LOCAL ELECTRICAL CODES AND/OR THE NATIONAL ELECTRICAL CODE.

**SUITABLE FOR USE AS SERVICE EQUIPMENT** WHEN MAIN BREAKER IS INSTALLED. WHEN MAIN BREAKER IS NOT INSTALLED, SUITABLE FOR USE AS SERVICE EQUIPMENT WHEN NO MORE THAN SIX DISCONNECTING MEANS ARE PROVIDED AND FEED THRU LUGS ARE NOT USED.

WHEN USED AS SERVICE EQUIPMENT, UNUSED NEUTRAL BAR TERMINALS MAY BE USED TO TERMINATE EQUIPMENT GROUNDING WIRES IN THE COMBINATIONS INDICATED FOR EQUIPMENT GROUND BAR TERMINALS.

SUM OF QT BREAKER RATINGS IS NOT TO EXCEED 110 AMPS PER BRANCH CIRCUIT BUS STAB.

TO RESET BREAKERS WITH TRIPPED HANDLE POSITION BETWEEN "ON" AND "OFF", MOVE HANDLE TO "OFF" THEN TO "ON".

REMOVE THROUSTOUTS FROM TRIM ONLY WHERE BREAKERS WILL BE INSTALLED. ALL OPENINGS MUST BE FILLED WITH BREAKERS OR FILLER PLATES. USE TWO QF3 FILLER PLATES TO FILL 100/200A MAIN BREAKER OPENING.

Siemens Industry Inc., Shelton, Georgia, U.S.A.

32

8000081000 Rev.02

**WARNING:** DO NOT ALLOW PETROLEUM BASED HYDROCARBON SPRAYS, CHEMICALS, SOLVENTS OR ANY FLAMMABLE LIQUIDS TO CONTACT THE EQUIPMENT. PETROLEUM BASED CHEMICALS CAN CAUSE DEGRADATION OF ELECTRICAL INSULATING MATERIALS.

**⚠ DANGER**

**Hazardous Voltage.**  
 Will cause death, serious injury or substantial property damage.

Turn off power, deenergize the equipment, before working inside.



**⚠ PELIGRO**

**Voltaje peligroso.** Causará la muerte, lesiones graves o daño substancial a la propiedad.

Desconecte el suministro de energía a este equipo antes de trabajar en su interior.

### USE COPPER OR ALUMINUM 60/75°C WIRE

SEE BREAKER RATINGS FOR WIRE SIZE AND TIGHTENING REQUIREMENTS.

TERMINALS	WIRE	TIGHTENING
A, B	300 kcmil - 4 AWG AL	275 LB-INS
N	40 - 4 AWG CU	275 LB-INS
MAIN BREAKER	30 AWG CU 250 kcmil - 4 AWG AL	See Breaker
G	20-4 AWG	110 LB-INS
NEUTRAL GROUND BARS	10-14 CU/10-12 AL	20 LB-INS
USE TYPE EC108 or EC108B (GND BAR KIT ACCESSORY)	9 AWG	25 LB-INS
GROUND CONDUCTORS ONLY	02/06/8 14 AWG (2) 12-10 AWG	20 LB-INS
EC103-2 NEUTRAL LUG KIT	20-2 AWG	40 LB-INS
EC102 NEUTRAL LUG KIT	30-4 AWG	120 LB-INS
EC103 NEUTRAL LUG KIT	300 kcmil - 1 AWG	240 LB-INS
MAIN LUG/MAIN BARS TO BUS CONNECTION (1420 KIT)		45 LB-INS
BONDING SCREW		45 LB-INS

### ACCESSORIES

DESCRIPTION	CAT. NO.
FILLER PLATE, 1"	QF3
OP BREAKER HOLD DOWN	EC6000
GROUND TERMINAL BRACKET	EC1103
TERMINAL CAP/COVER LUG	EC1001
STANDARD PWR INTERLOCK KIT	EC6000
EC6000	EC6000
EC6000	EC6000

### MAIN LUG, MAIN BREAKER KITS

DESCRIPTION	CAT. NO.
100 AMP MAIN BREAKER	100M100A
200 AMP MAIN BREAKER	200M200A
100/200 AMP MAIN LUG	100L200A

### CONDUIT SIZES

TRADE SIZE	CAT. NO.
1/2 INCH	EC10001
3/4 INCH	EC10002
1 INCH	EC10003
1 1/2 INCH	EC10004
2 INCH	EC10005
2 1/2 INCH	EC10006

**SHORT CIRCUIT CURRENT RATING:** THIS PANELBOARD HAS A MAXIMUM SHORT CIRCUIT CURRENT RATING OF 65,000 AMPS RMS SYMMETRICAL 120/240V - THE ACTUAL RATING IS DEPENDENT ON THE BRANCH BREAKERS INSTALLED IN THIS PANELBOARD AND THE MAIN FEEDER BREAKER, IF ANY, INSTALLED AHEAD OF THIS PANELBOARD. THE CORRECT MAIN BREAKER FEEDER/MAN BREAKER/BRANCH BREAKER SERIES COMBINATIONS TO BE USED ARE LISTED IN THE TABLE BELOW. ANY CIRCUIT BREAKER INSTALLED, REPLACED, OR ADDED IN THIS PANELBOARD MUST BE MANUFACTURED BY SIEMENS AND MUST BE OF THE CORRECT TYPE AS INDICATED IN THE TABULATION BELOW. USE OF OTHER CIRCUIT BREAKERS IN THIS EQUIPMENT MAY VOID THE WARRANTY.

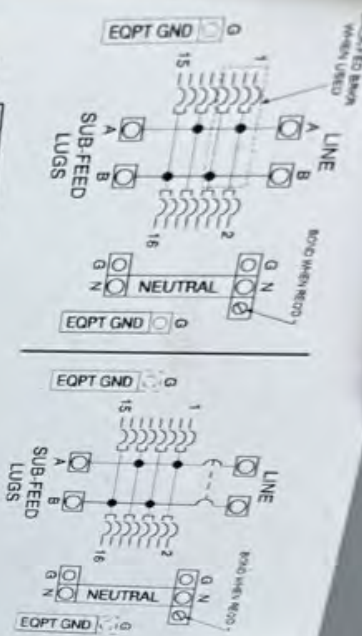
MAIN BREAKER	MAIN FEEDER BREAKER	PANELBOARD MAIN	BRANCH BREAKER	RATING AMPS
NONE USED	NONE USED	NONE USED or QP QNR	QP QG, QT, QAF, QAF2, QPF, QE, QNR	10,000
	NONE USED	EDM600, EC6000, QPH, QNH	QP QT, QAF, QAF2, QPF, QE, QNR	22,000
	QSHH	NONE USED or EDM600, EC6000, QP, QPH, QNH, QNH2	QP QPH, QT, QAF, QAFH, QAF2, QAF2H, QPF, QPHF, QE, QEH, QNH, QNH2	42,000
	NONE USED	HQP, HQNR		65,000
	ED4, ED6, HQP, HBL, HQ5, HQN, HQPP			
Siemens Breaker Types: NEDGA, HDGA, NEGA, HEGA, LXDE(A), MDG, MDG6, NDS, NDS6, NLLA, NUGA, NLGA, NLGB, NMG, NMG6, NPD, PD6, PXD6, RD6, RXD6	QPH, BLH, QS, QN	NONE USED or EDM600, EC6000, QP, QPH, HQP, QNH, QNH2, HQNR	QP QPH, QT, QAF, QAFH, QAF2, QAF2H, QPF, QPHF, QE, QEH, QNH, QNH2	65,000
Siemens Breaker Types: FDS, FXD6, HFDS, HFSD6	QPH, BLH, QS, QN			
Siemens Breaker Types: JXD2(A), JD6(A), JXD6(A), HXD6(A), HXD6(A), MDG, MDG6, NMG, NMG6, NDS, NDS6, NPD, PD6, PXD6, RD6, RXD6, HMG, HMG6, HPG, HPG6, LXD6(A), LXDE(A), HDG, HDG6	QPH, BLH, QS, QN			65,000
Siemens Breaker Types: JXD2(A), JD6(A), JXD6(A), HXD6(A), HXD6(A), MDG, MDG6, NMG, NMG6, NDS, NDS6, NPD, PD6, PXD6, RD6, RXD6, HMG, HMG6, HPG, HPG6, LXD6(A), LXDE(A), HDG, HDG6	NONE USED	QPH, HQP, QNH, QNH2		

FEED THRU CIRCUIT PROTECTION IS LIMITED TO 100A WITH NO FEEDER MAIN AHEAD OF THIS PANEL OR PANELBOARD MAIN INSTALLED IN THIS PANEL. SEE SHORT CIRCUIT RATING TABLE FOR APPROPRIATE FEEDER & MAIN BREAKERS TO USE FOR DESIRED RATINGS.

Assembled in Mexico


© 2017 Copyright Siemens Industry Inc.

The National Electrical Code is a registered trademark of the National Fire Protection Association.





 **CAUTION**   
SOLAR ELECTRIC SYSTEM CONNECTED

 **WARNING**  
DUAL POWER SUPPLY  
SOURCE: UTILITY GRID  
AND PV SOLAR  
ELECTRIC SYSTEM

SOLAR POINT OF INTERCONNECTION





CAUTION: BURIED ELECTRIC

CAUTION: BURIED ELECTRIC

CAUTION: BURIED ELECTRIC

CAUTION: BURIED ELECTRIC





CAUTION - BURIED ELECTRIC LINE BELOW







































