













+DC-





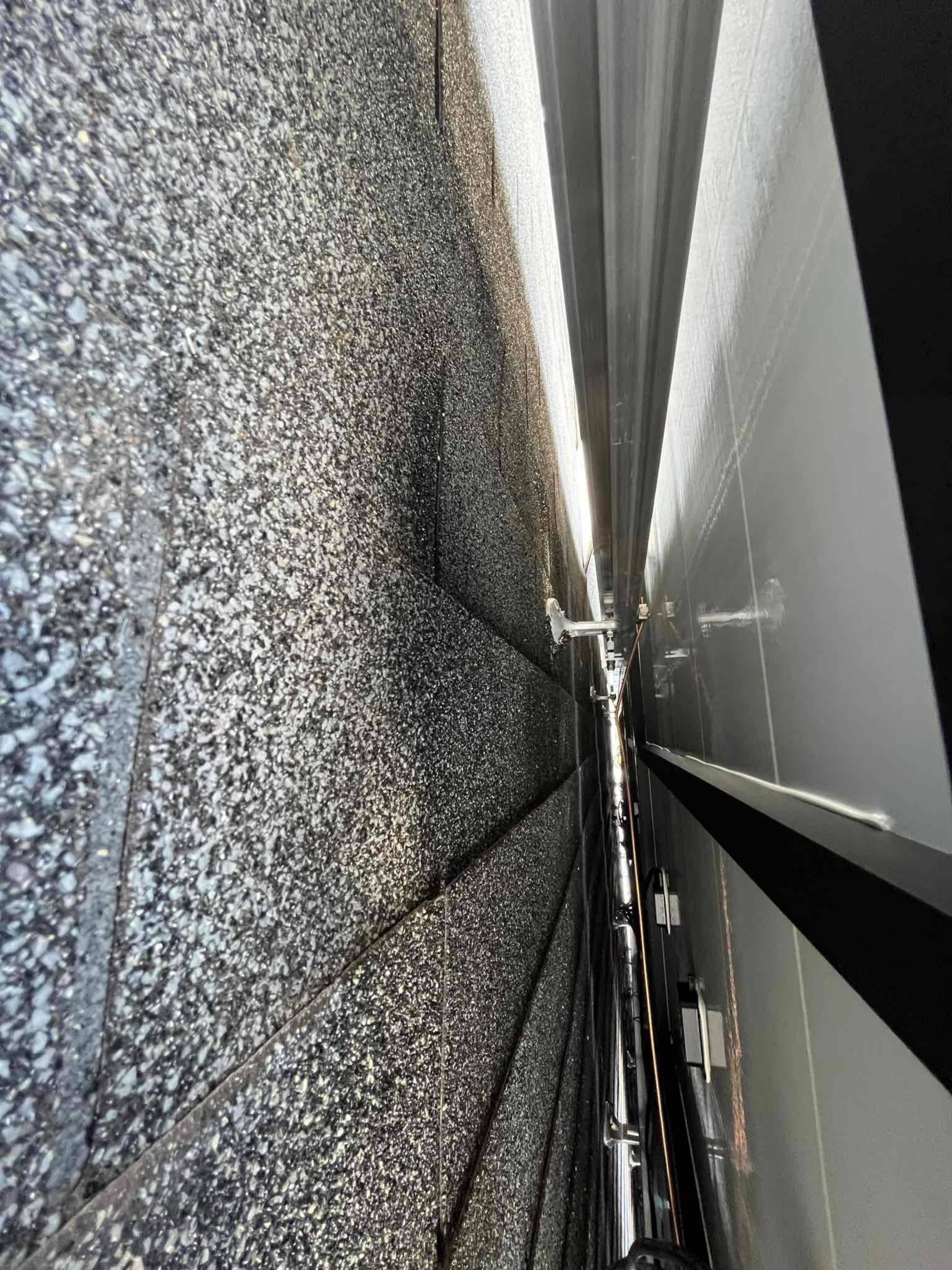


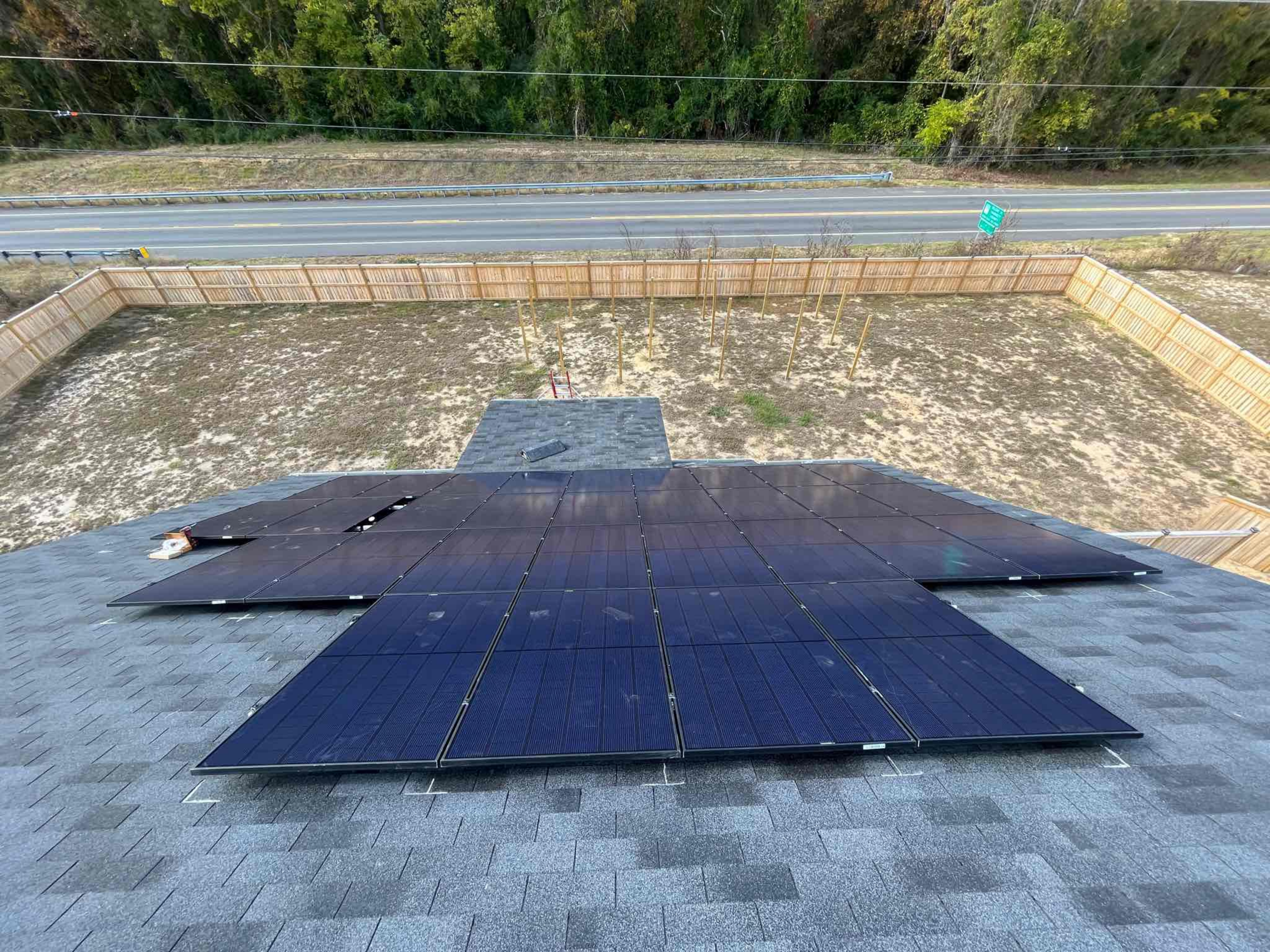




	<b>REC Alpha Pure Series</b> <b>REC405AA Pure</b> Serial Number: FBB-4012192305		Phone: +65 6485 8228 <a href="http://www.recgroup.com">www.recgroup.com</a>
	<b>Power Output (Pmax)</b> <b>Watt Class Sorting</b> <b>Power Production Tolerance</b> <b>Rated Voltage (Vmpp)</b> <b>Rated Current (Impp)</b> <b>Open Circuit Voltage (Voc) (+/- 3%)</b> <b>Short Circuit Current (Isc) (+/- 3%)</b> <b>Maximum System Voltage (Vsys)</b> <b>Maximum Series Fuse (DC) (UL)</b> <b>Maximum Series Fuse (DC) (IEC)</b> <b>Design Load</b> <b>Maximum Test Load</b> <small>(Values at STC: 1000 W/m<sup>2</sup> AM 1.5, cell temp 25 °C)</small>	405 W 0/+5 W +/- 3 % 41.8 V 9.69 A 49.1 V 10.41 A 1000 V 25 A 25 A +4666 / -2666 Pa* +7000 / -4000 Pa*	 <ul style="list-style-type: none"> <li>• Conforms to UL Std. 61730-1/-2</li> <li>• Certified to CSA Std. C22.2#61730-1/-2</li> <li>• UL Fire Rating Type 2*</li> </ul>
		 <ul style="list-style-type: none"> <li>• IEC 61215-2016</li> <li>• IEC 61730-2016</li> </ul>	
		 	Manufactured: 10.07.2023
<p>  </p> <p> <b>Warning electrical hazard. This module produces electricity when exposed to light.</b>  <b>CAUTION: DO NOT DISCONNECT UNDER LOAD</b>  <b>Avertissement: Risque de choc électrique. Ce module solaire produit de l'électricité lorsqu'il est exposé à la lumière.</b>  <b>ATTENTION: NE PAS DECONNECTER SOUS TENSION</b> </p> <p> <small>For field connections, use min. 4 mm<sup>2</sup>(12 AWG) UL PV wires insulated for a min. of 90°C</small>  <small>Made in Singapore by REC SOLAR PTE. LTD.</small>  <small>20 TUAS SOUTH AVENUE 14, SINGAPORE 637312, SINGAPORE</small> </p> <p> <small>EU/Europe Contact: REC Solar EMEA GmbH</small>  <small>Balanstr. 71a, 81541 Munich, Germany, Tel: +49 (0)89-442-38590</small>  <small>For other regions see: <a href="http://www.recgroup.com/contact">www.recgroup.com/contact</a></small> </p> 			









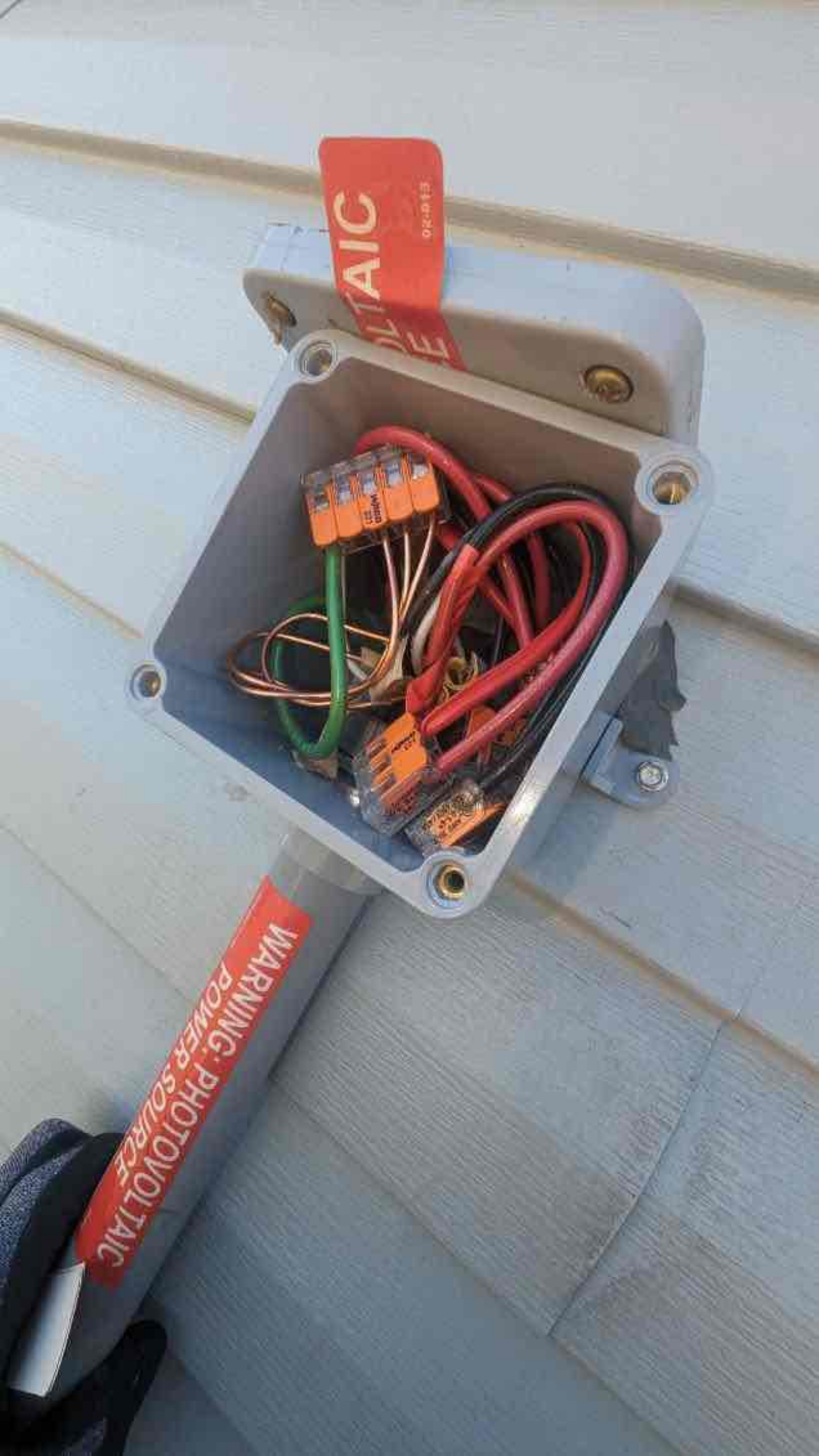






thermostat





ULTRA  
E16020

WARNING: PHOTOVOLTAIC  
POWER SOURCE



CHINA

MOUNT  
MUST BE

MOUNT MUST BE  
INSTALLATION.  
ENTRE LES  
PAR CE  
DE  
REQUIS  
LATION.

















883-01331 14  
108PLUS-72-2-US

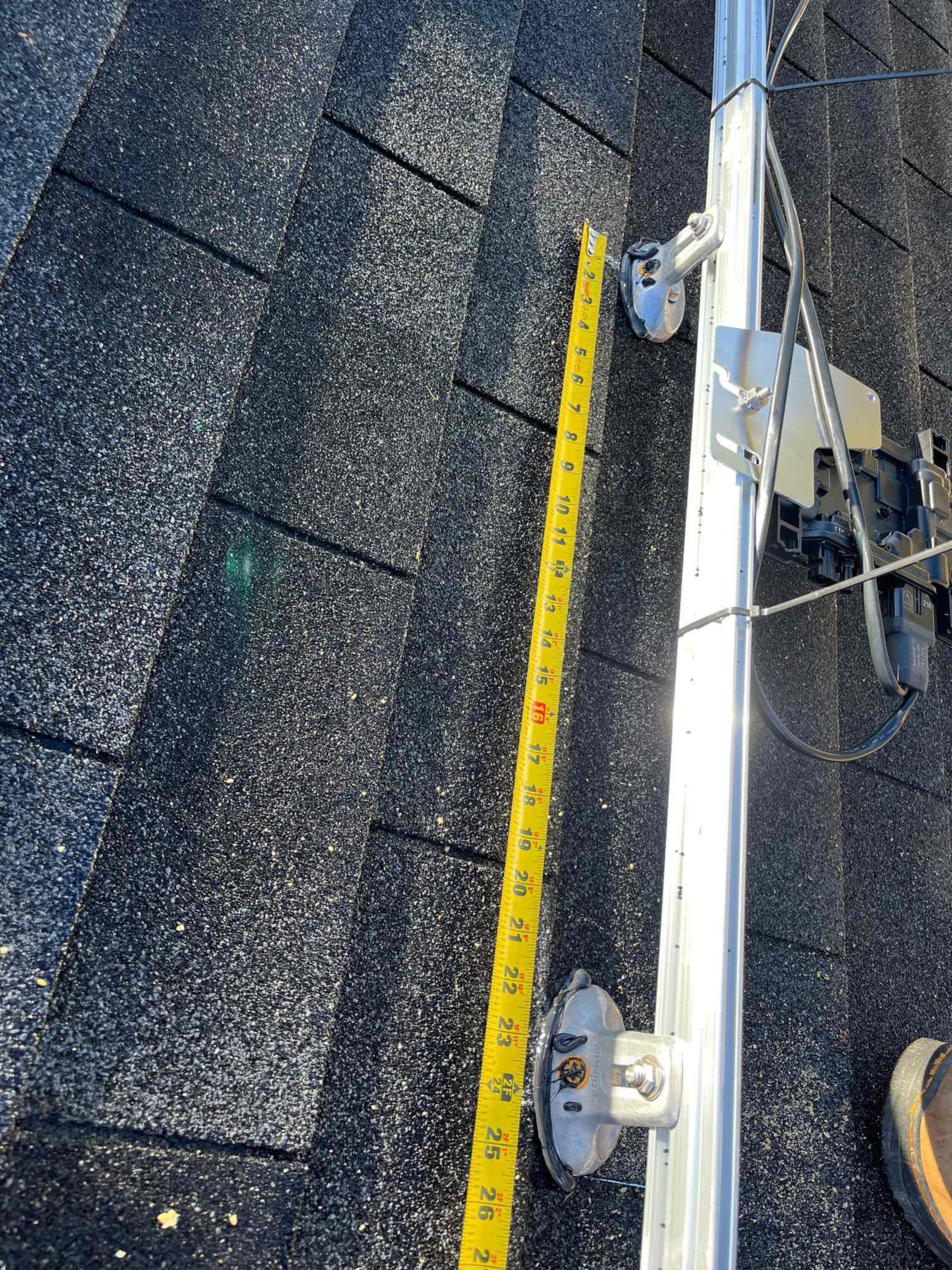


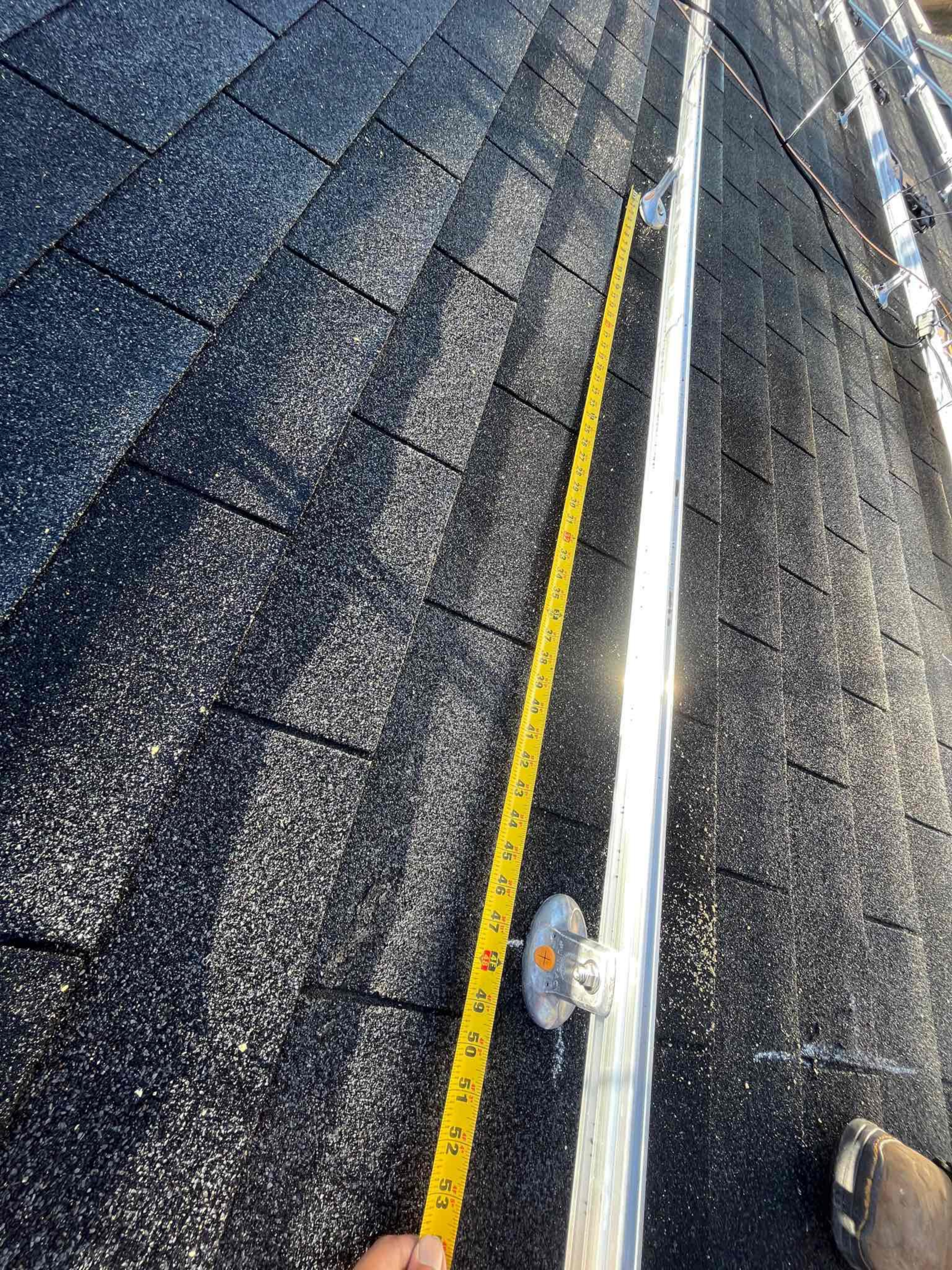
SN:202329047264 TAN:883-01331

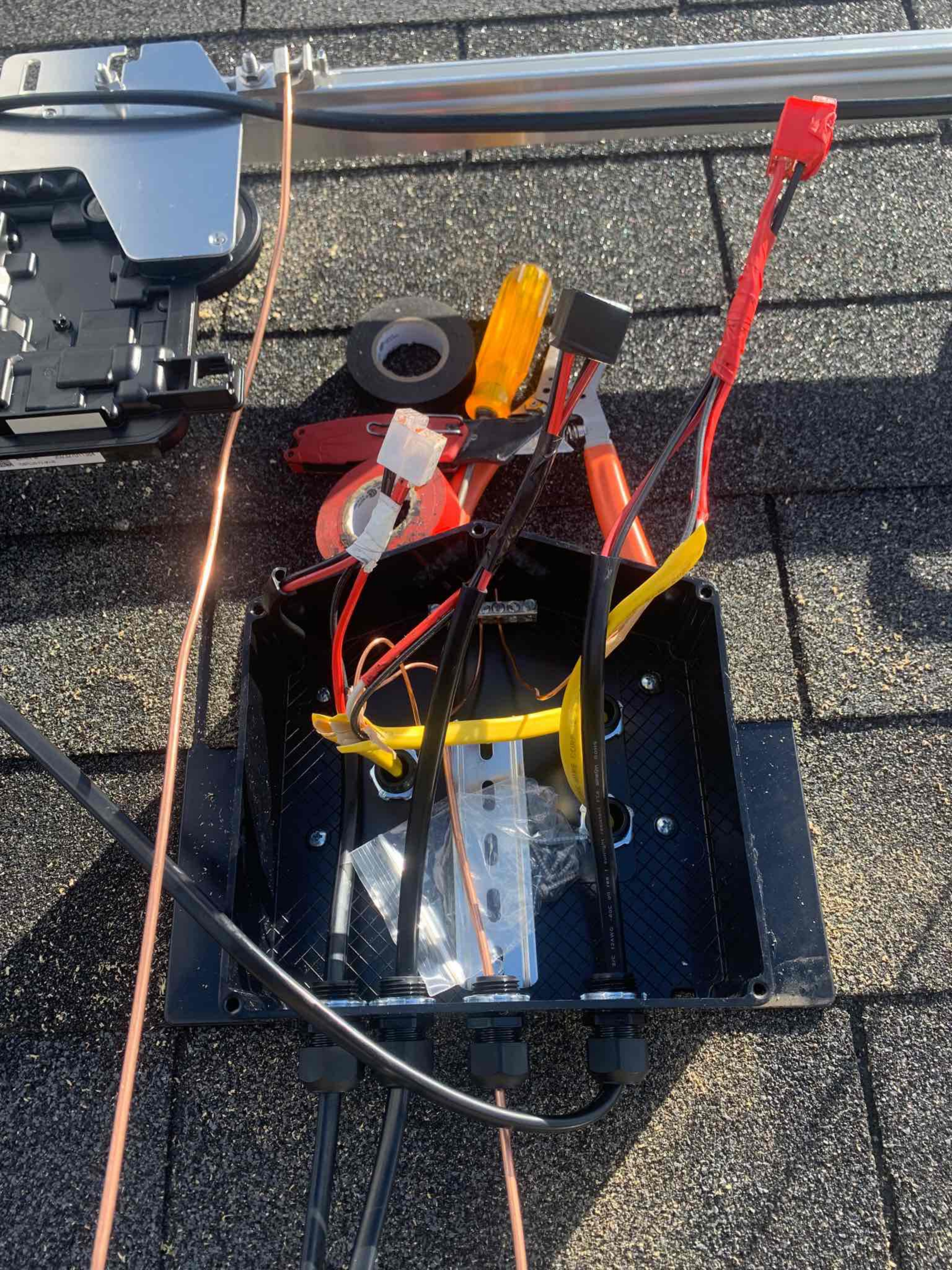
202329047264

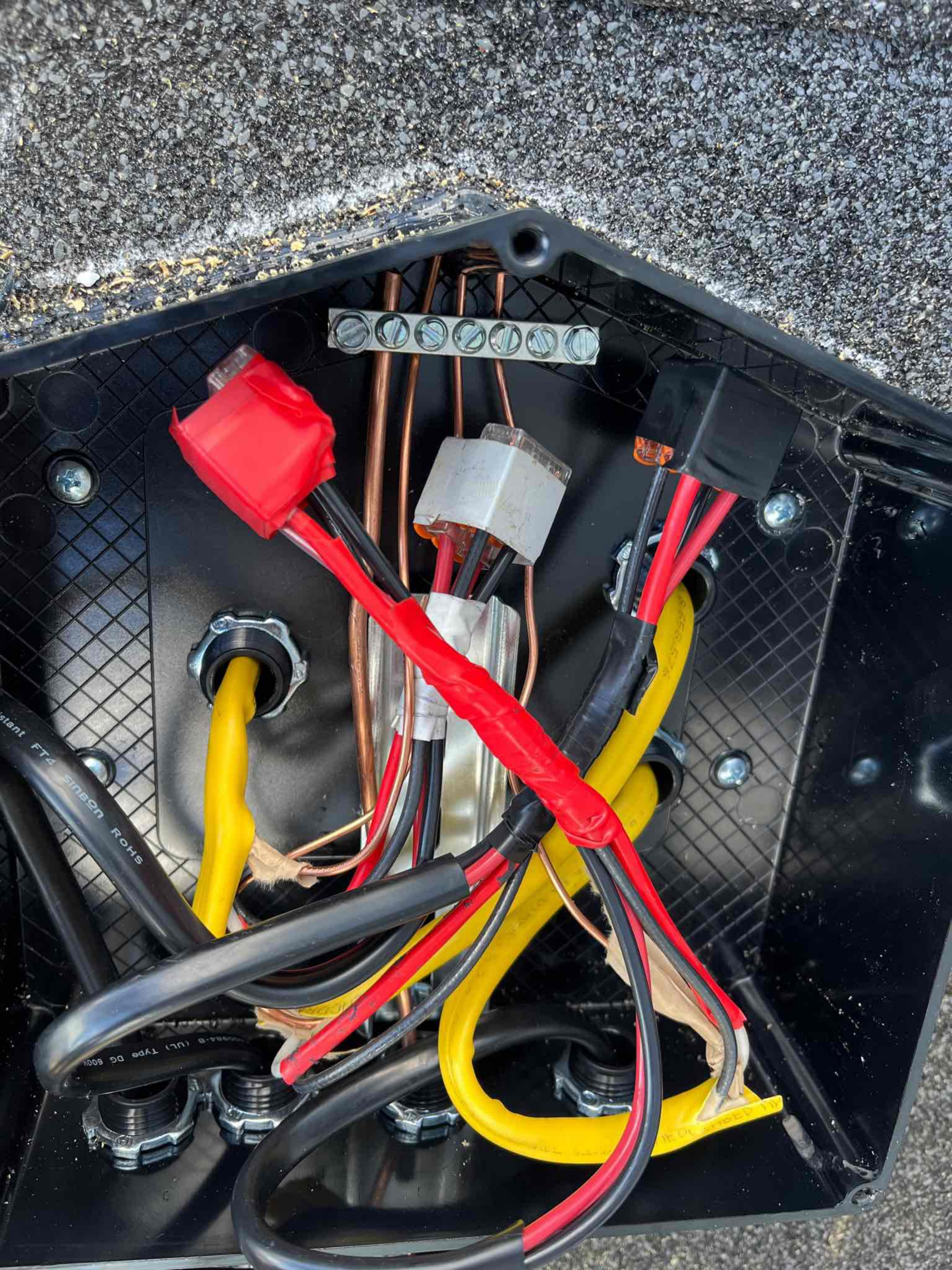


UNIRAC











 **ENPHASE.**

## IQ8+

Grid Support Utility Interactive Inverter  
Multimode Inverter

Patent Information: <https://enphase.com/patents>

Off-grid Power Factor: -1 to 0 to +1

Grid-tied Power Factor: +/- 0.85

DC input range: 16-58 V

Max. input short-circuit current: 25 A

Max. input continuous current: 12 A

AC output voltages: 240 V

AC output currents: 1.21 A

AC output frequency: 60 Hz

AC output power (max. continuous): 290 VA

Operating temperature: -40 °C to +60 °C

Ingress protection: NEMA Type 6

Photovoltaic Rapid Shutdown Equipment

NEC 690.12 and C22.1-2015 Rule 64-218

UL 1741 3rd Ed., incl. SB Compliant | Assembled in Mexico



This device complies with part 15 of the FCC Rules. Operation is subject to the following two conditions: (1) This device may not cause harmful interference. (2) This device must accept any interference received, including interference that may cause undesired operation.



**CAUTION: RISK OF SHOCK. WARRANTY VOID IF COVER REMOVED. NO USER SERVICEABLE PARTS INSIDE. REFER SERVICING TO QUALIFIED SERVICE PERSONNEL.**

**WARNING:** ELECTRIC SHOCK HAZARD. DC CONDUCTORS OF THIS PHOTOVOLTAIC SYSTEM ARE UNGROUNDED AND MAY BE ENERGIZED. AC AND DC VOLTAGE SOURCES TERMINATE INSIDE THIS EQUIPMENT. DISCONNECT BOTH BEFORE SERVICING. PHOTOVOLTAIC ARRAY SUPPLIES A DC VOLTAGE TO THIS EQUIPMENT WHEN EXPOSED TO LIGHT. HOT SURFACES: TO REDUCE THE RISK OF BURNS - DO NOT TOUCH.

**ATTENTION:** RISQUE D'ELECTROCUTION. LES CONDUCTEURS CC DE CE SYSTEME PHOTOVOLTAIQUE NE SONT PAS RELIES A LA TERRE ET PEUVENT ETRE SOUS TENSION. DES SOURCES DE TENSION CA ET CC SONT CONNECTEES A CET APPAREIL. ISOLER LES DEUX SOURCES AVANT TOUTE INTERVENTION. LES CABLES COURANT CONTINU SONT SOUS TENSION LORSQUE LE CHAMP PHOTOVOLTAIQUE EST EXPOSE A LA LUMIERE. RISQUE DE BRULURE, NE PAS TOUCHER.