





2 93 94 95 96 97 98 99 100

10.1











**ENPHASE**

**PHOTOVOLTAIC SYSTEM**

**⚠️ AC DISCONNECT ⚠️**

RATED AC OUTPUT CURRENT 11.4 A

NOMINAL OPERATING AC VOLTAGE 240 V

**⚠️ WARNING**

THIS EQUIPMENT FED BY MULTIPLE SOURCES. TOTAL RATING OF ALL OVERCURRENT DEVICES, EXCLUDING MAIN SUPPLY OVERCURRENT DEVICE, SHALL NOT EXCEED CAPACITY OF BUSBAR.

**⚠️ WARNING**

**ELECTRIC SHOCK HAZARD**

TERMINALS ON THE LINE AND LOAD SIDES MAY BE ENERGIZED IN THE OPEN POSITION

**⚠️ WARNING**

**PHOTOVOLTAIC SYSTEM  
COMBINER PANEL**

**DO NOT ADD LOADS**

**⚠️ WARNING**

MAIN DISTRIBUTION UTILITY CONNECTIONS POWER TO THIS BUILDING IS ALSO SUPPLIED THROUGH THIS PANEL. DO NOT REMOVE OR ALTER ANY ELECTRICAL CONNECTIONS OR WIRING. CONSULT MANUFACTURER WITHIN 100 FT OF THIS LOCATION.

**⚠ WARNING**

POWER TO THIS BUILDING IS ALSO SUPPLIED FROM ROOF MOUNTED SOLAR ARRAY. SOLAR ARRAY RAPID SHUTDOWN DISCONNECT IS LOCATED OUTSIDE NEXT TO UTILITY METER.

**⚠ WARNING**

**DUAL POWER SUPPLY**

SOURCES: UTILITY GRID AND PV SOLAR ELECTRIC SYSTEM

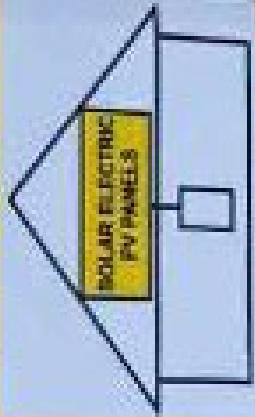
**⚠ WARNING**

**ELECTRIC SHOCK HAZARD**

TERMINALS ON THE LINE AND LOAD SIDES MAY BE ENERGIZED IN THE OPEN POSITION

**SOLAR PV SYSTEM EQUIPPED WITH RAPID SHUTDOWN**

TURN RAPID SHUTDOWN SWITCH TO THE "OFF" POSITION TO SHUT DOWN PV SYSTEM AND REDUCE SHOCK HAZARD IN THE ARRAY



**PHOTOVOLTAIC SYSTEM AC DISCONNECT ⚠**

RATED AC OUTPUT CURRENT 31.4 A  
NOMINAL OPERATING AC VOLTAGE 240 V

**⚠ WARNING**

**INVERTER OUTPUT CONNECTION**

DO NOT RELOCATE THIS OVERCURRENT DEVICE

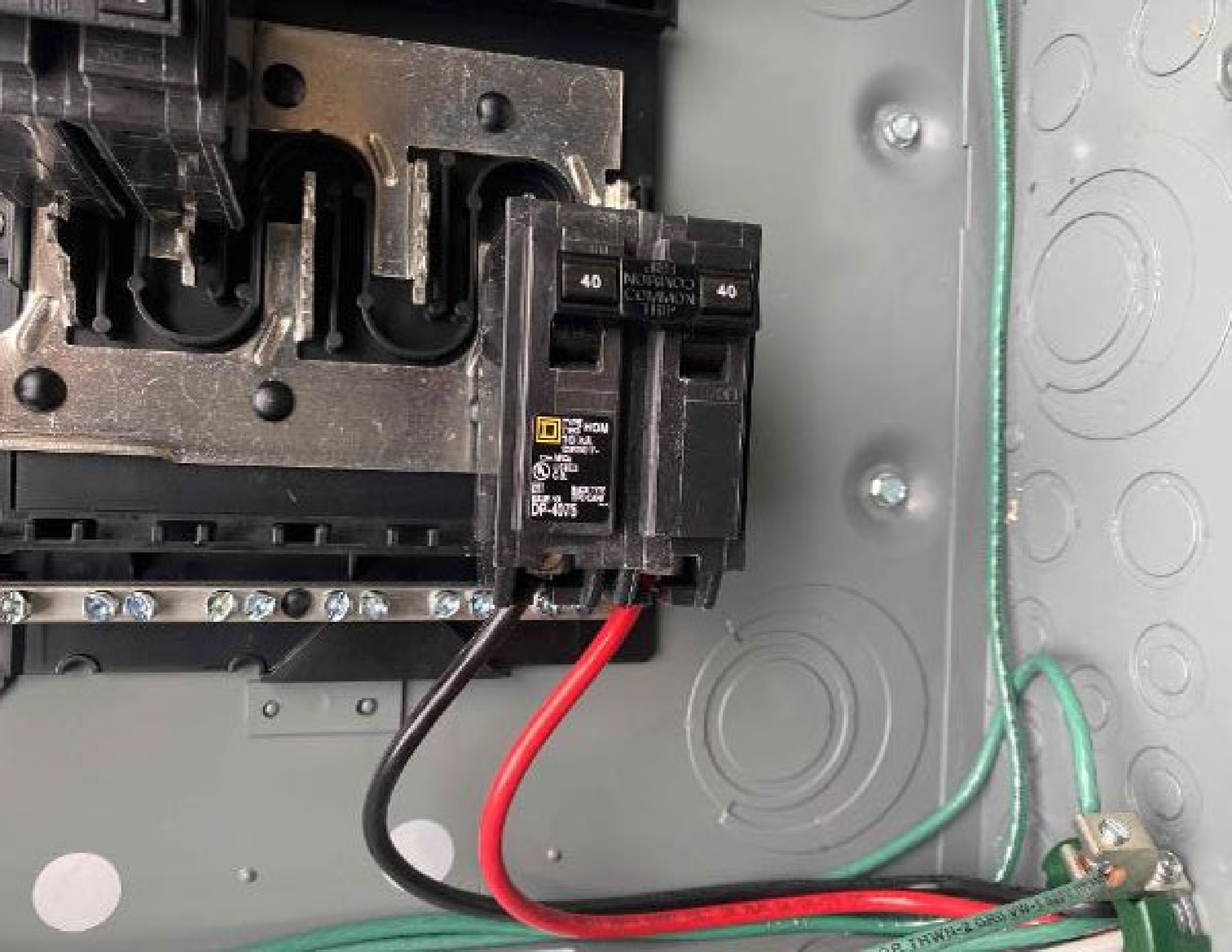












40

COMMON

40

DP-4075  
10 A

Warning: Before working on this equipment, disconnect the power supply from the main power source. Failure to do so may result in personal injury or death. Always use proper safety procedures when working on electrical equipment. For more information, see the safety instructions in the user manual.

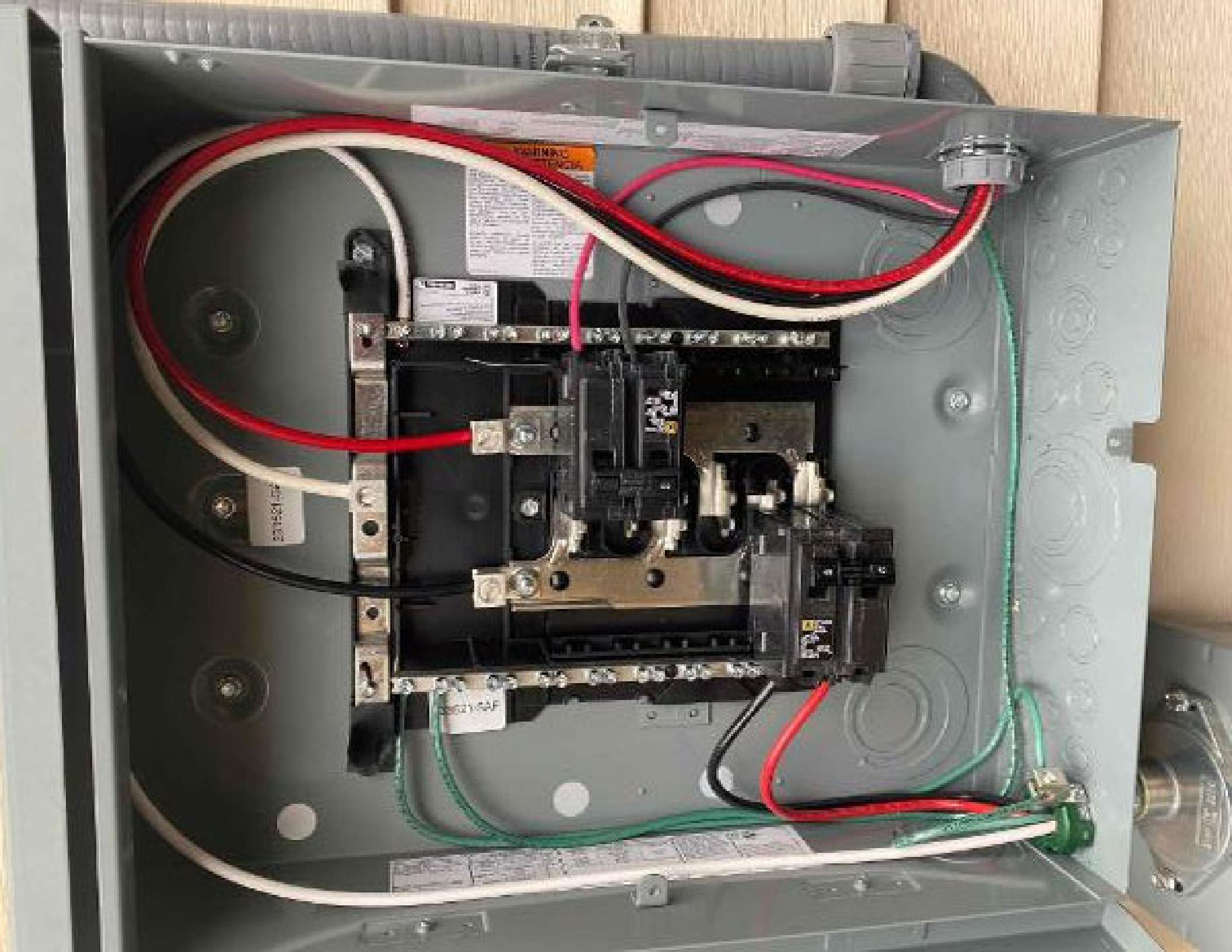
**WARNING**  
Read the instructions before using the equipment. Failure to do so may result in personal injury or death. Always use proper safety procedures when working on electrical equipment. For more information, see the safety instructions in the user manual.

**DP-4075**  
TYPE 100% HOM  
10 KA  
10000 V-  
UL LISTED  
E.C. C.A.  
1500000  
1500000

OFF

ON

30  
CIRCUIT BREAKER  
TRIP













Page removed  
180 Smeiby St  
Spring Lake MI

E.T.  
Nere  
Hightower







Page 10/10  
100 S. 19th St  
Spring Lake MI

E.T.  
Nere  
Hightower

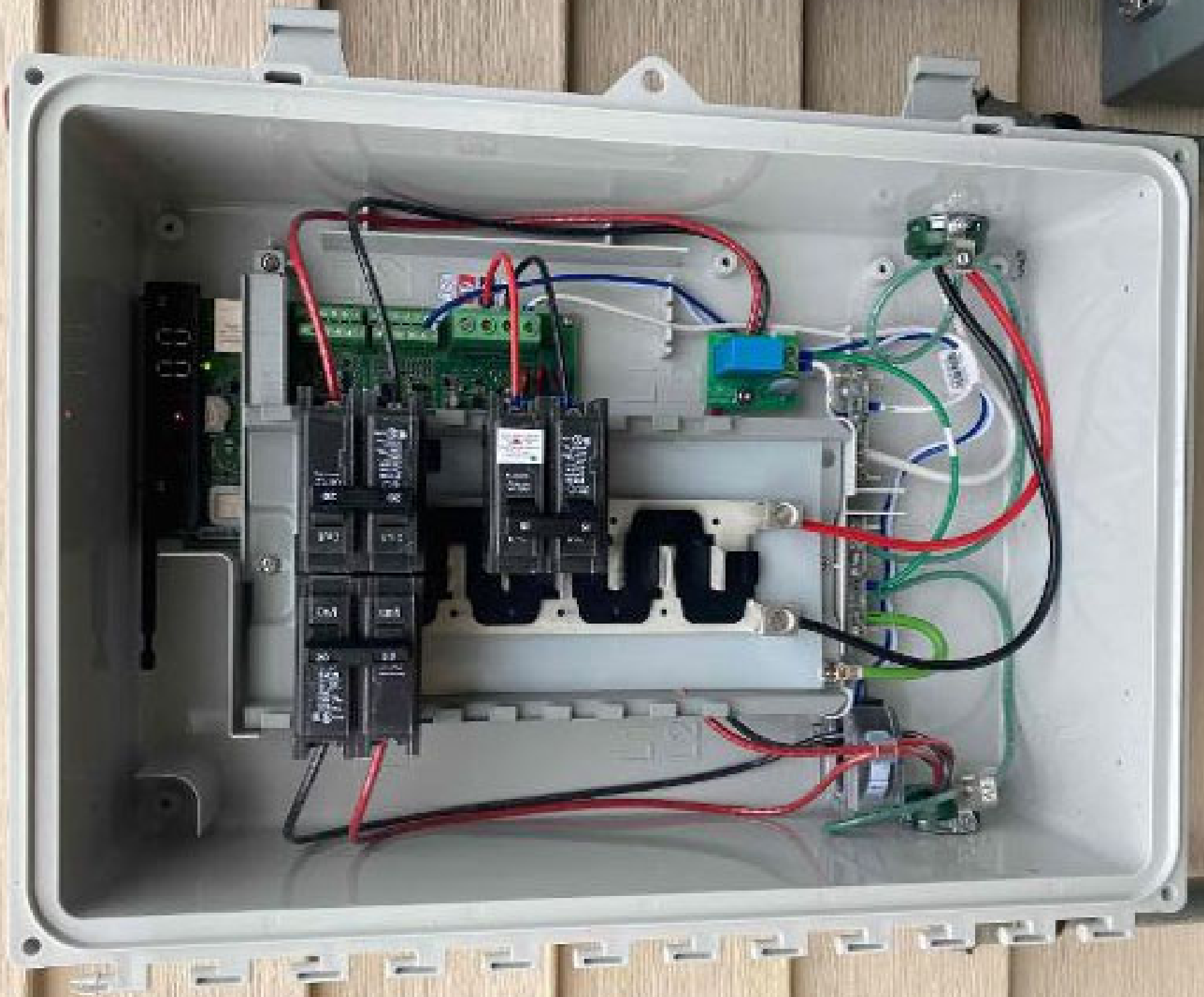




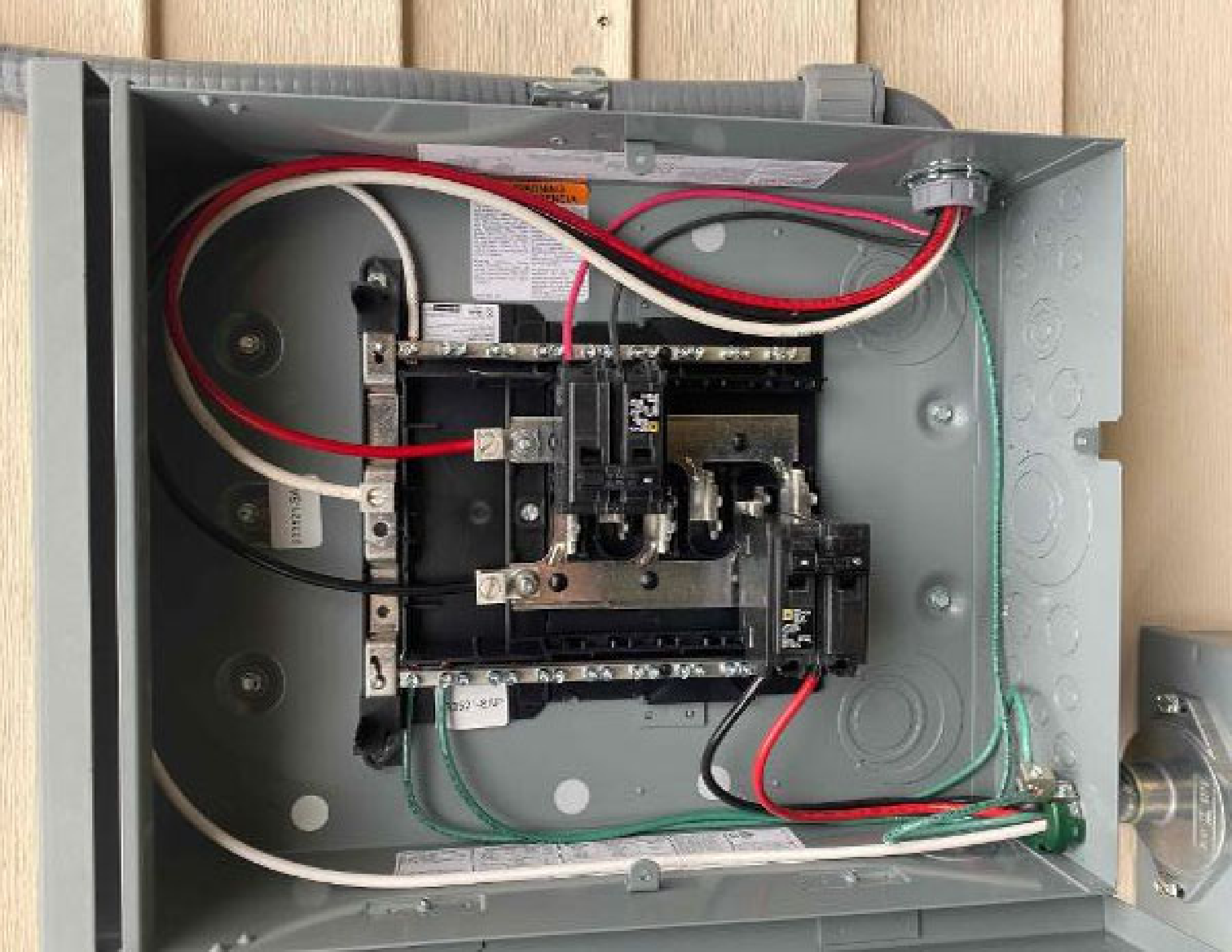


















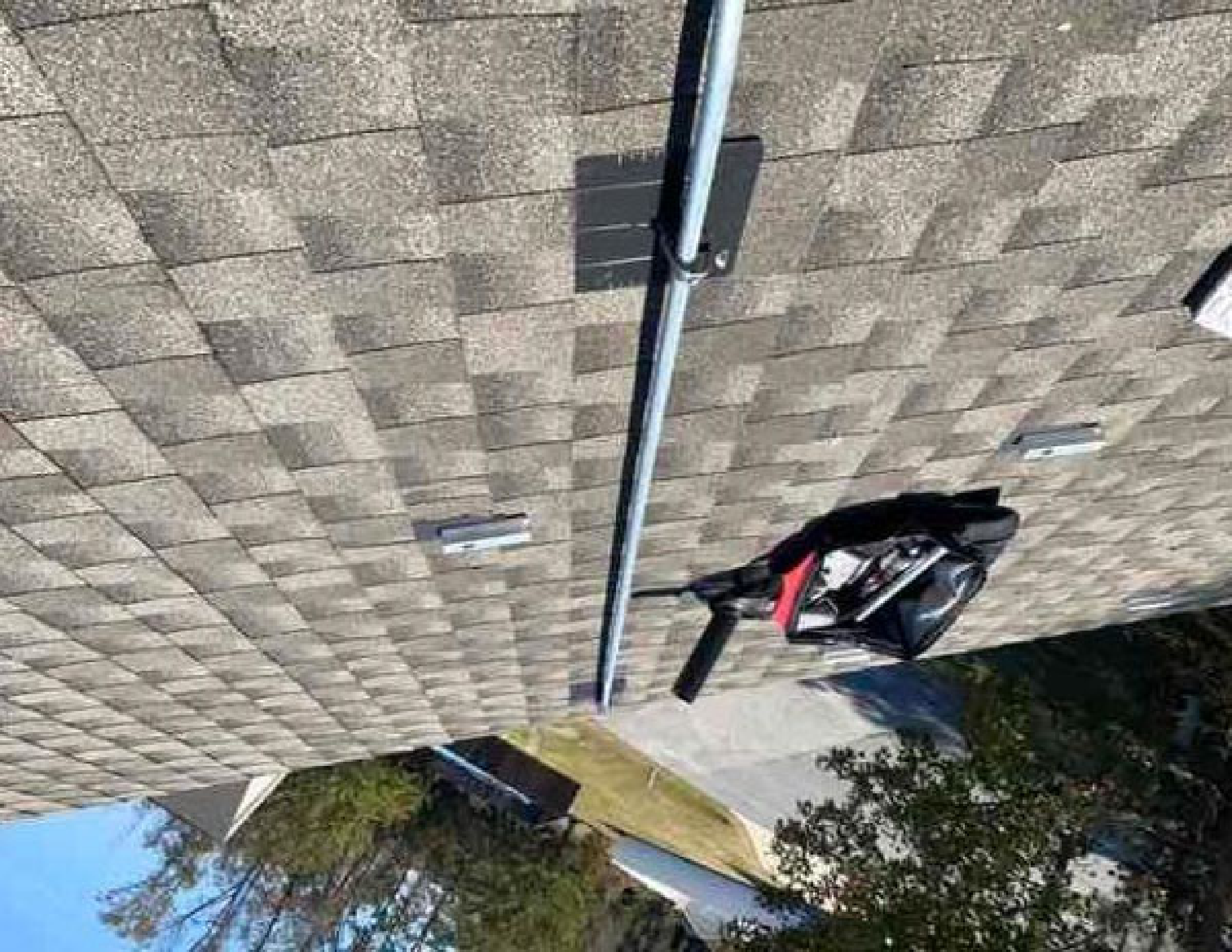






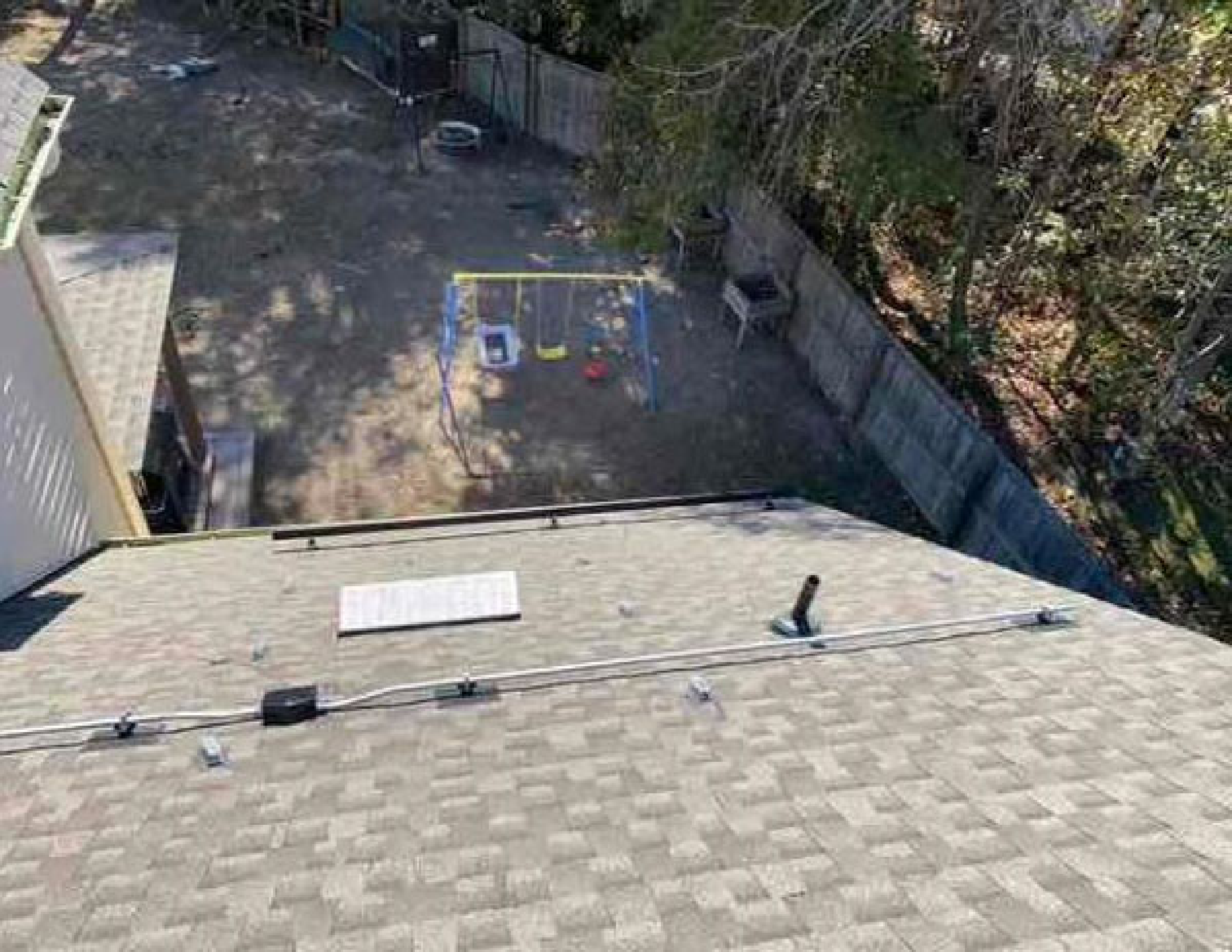
















**HUBE**

**SFI**

Recycled Fiber 80%  
www.sfi-program.com  
1-800-453-4444

SPACE 1/8 INCH  
SQUARE EDGE  
SELF SPACING  
PIPOILED EDGE

THIS SIDE DOWN  
ESTE LADO ABAJA

MILL 225  
CRYSTAL HILL,

**TECO**  
TESTED

100% 2-10  
EXPOSURE  
SHEATHING SPAN 1  
7/16 PERFT  
20

















**ENPHASE**

**IQ7X**

IQ 7X Grid Support Interactive Inverter  
For Enphase patent information, refer to:  
<https://enphase.com/company/patents/>

Power Factor Range: 0.9-1.0

AC Input Range: 25 - 70.5V

Max. Input Short-Circuit Current: 10A

Max. Input Continuous Current: 6.5A

AC Output Voltage: 168 - 280V

AC Output Current: 1.5/1.3/1A

AC Output Frequency: 60Hz

AC Output Power (30 min. continuous): 3000W

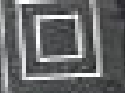
Operating Temperature: -40°C to 60°C

Ingress Protection: IP67 (Type 1)

Photovoltaic Rapid Shutdown: Equipped

ULC: 600.12 and C22.1-2015 Rule 64-2.1.1

U.S. Pat. 8,418,641 | [enphase.com](http://enphase.com) | [www.enphase.com](http://www.enphase.com)



This device complies with part 15 of the FCC Rules. Operation is subject to the following two conditions: (1) This device may not cause harmful interference. (2) This device must accept any interference received, including interference that may cause undesired operation.

**CAUTION: RISK OF SHOCK. WARRANTY VOID IF COVER REMOVED. NO USER SERVICEABLE PARTS INSIDE. REFER SERVICING TO QUALIFIED SERVICE PERSONNEL.**

**WARNING:** ELECTRIC SHOCK HAZARD. DC CONDUCTORS OF THIS PHOTOVOLTAIC SYSTEM ARE UN-GROUNDED AND MAY BE ENERGIZED. AC AND DC VOLTAGE SOURCES TERMINATE INSIDE THIS EQUIPMENT. DISCONNECT BOTH BEFORE SERVICING. INDIVIDUAL AC BRANCH SUPPLIES A DC VOLTAGE TO THE EQUIPMENT WHEN EXPOSED TO LIGHT. HOT SURFACES: TO REDUCE THE RISK OF BURNS, DO NOT TOUCH.

**ATTENTION:** RISQUE D'ÉLECTROCUTION. LES CONDUCTEURS DE CE SYSTÈME PHOTOVOLTAÏQUE NE SONT PAS RASÉS À LA TERRE ET PEUVENT ÊTRE SOUS TENSION. DES SOURCES DE TENSION CA ET CC SONT CONNEXÉES À L'ÉQUIPEMENT. DÉBRANCHER LES DEUX SOURCES AVANT TOUTE INTERVENTION. LES CÂBLES COURANT CONTINU SONT SOUS TENSION LORSQUE LE CHAMP PHOTOVOLTAÏQUE EST EXPOSÉ À LA LUMIÈRE. RISQUE DE BRÛLURE. NE PAS TOUCHER.











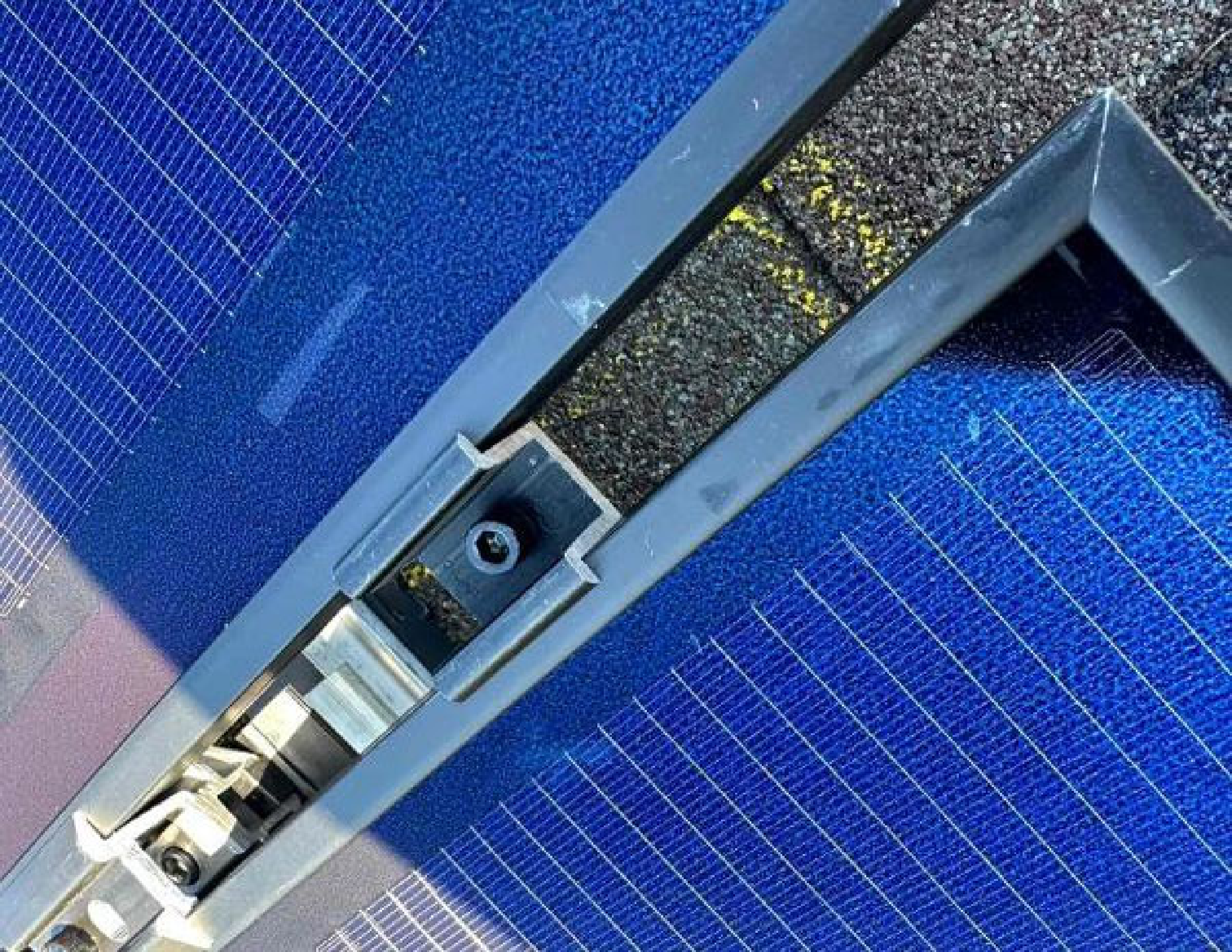














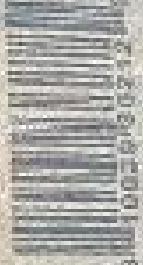
**FLASHKIT SFM TRIM 5**

**004201D**

FLASHKIT SFM TRIM 5 COMP DARK

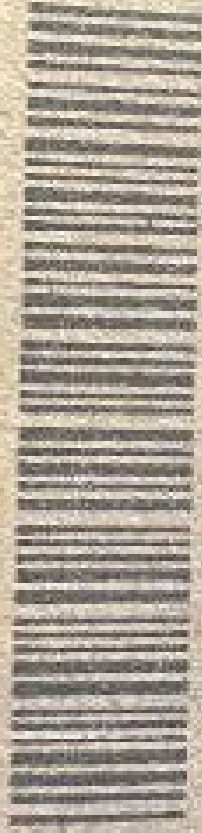
Pack Size : 10

Factory Code: 5-1

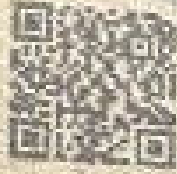


VICIPOL 0055416-00 Manufacture date: 21/10/22-31/10/22

8110038130212116



**FLASHKIT SFM TRIM S**



004201D

FLASHKIT SFM TRIM S COMP DARK  
Pack Size : 10  
Factory Code: 5-1



WUPC# 0045416-00 Manufacture date: 21/02/23-31/02/23

81110030158212169



Barcode  
CE  
Technical specifications and safety warnings















16





Technical label on the back of the solar panel, featuring a barcode at the top, the number '33' in the center, and various safety and technical specifications in smaller text.







7

6

5

4

3

2

Barcode label with text:   
 10/10/2010 10:00 AM  
 10/10/2010 10:00 AM  
 10/10/2010 10:00 AM  
 10/10/2010 10:00 AM















Production

Today, 10:00 AM

Lifetime: 0:00:00



Scan completed

10 MicroInverters : 24/24

DONE

MIC INVERTER

Start syncing now

## Connection

Cellular

### UNSYNCED ITEMS

Projects

0

Media

0

Fields

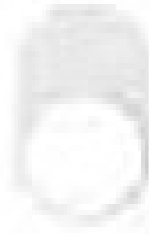
0

### SYNC SETTINGS

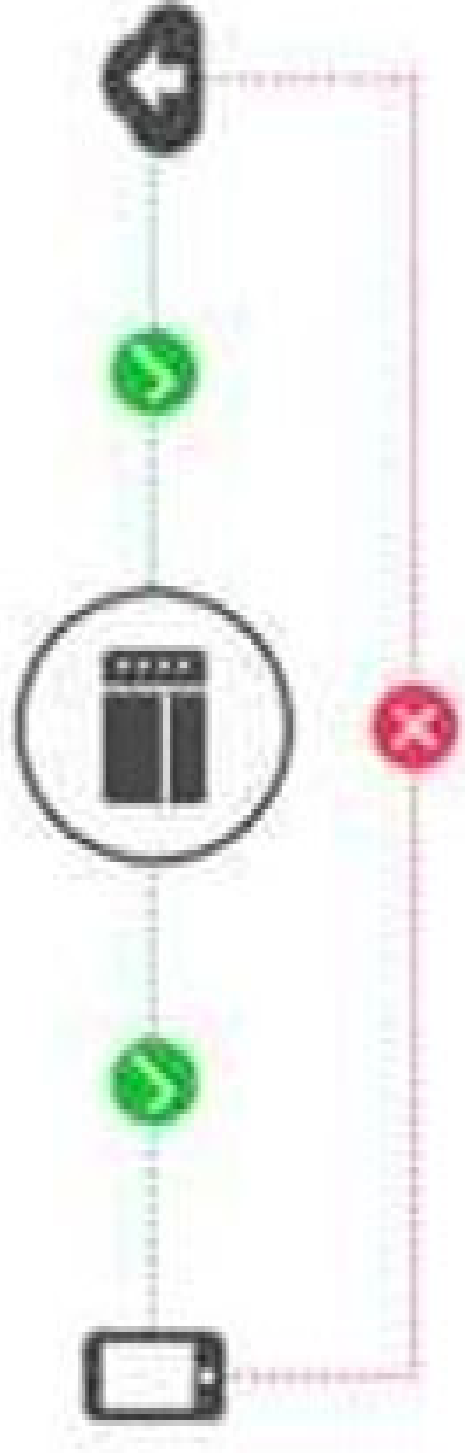
Sync on Wifi only



Optimize photo download



## IQ Gateway 202329085045



*IQ Gateway successfully connected to Enphase Cloud and Installer Toolkit.*



**IQ Gateway must be connected to the Enphase Cloud via both Cellular modem and Wi-Fi/Ethernet for Enphase Energy System commissioning.**

### IQ Gateway Connectivity Status



Wi-Fi











Do not wash  
Do not scrub  
Do not use  
Do not use  
Do not use

DO NOT  
WASH

DO NOT  
WASH



# IQ Combiner 4

Photovoltaic  
Combiner Box  
X2-IQ-AM1-240-4  
IEEE1547:2018 COMPLIANT



**Electrical ratings**

Voltage 240VAC, 60Hz  
 DG Breakers 80A MAX (combined)  
 DG Inputs 64A MAX (combined)  
 Output 65A MAX, 90A MAX Feeder OCPD  
 Temperature 46°C MAX ambient  
 For DG breaker, use only Eaton BR series.

202329085045

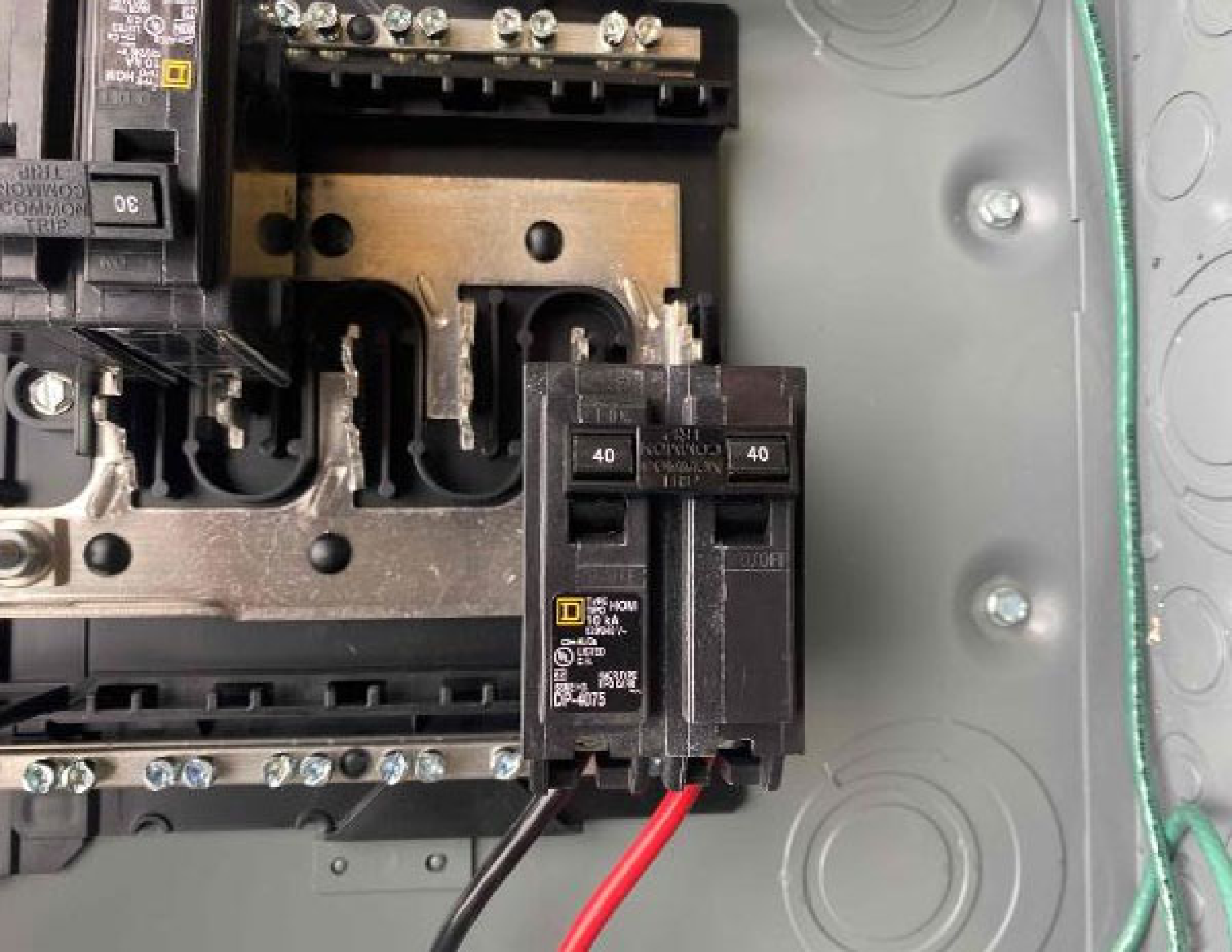
S/N: 202329085045

P/N: 883-00353 15 9298

Dedicated solar and DG Combiner Box - do not add loads  
 10 AMP or 15 AMP IQ Gateway Breaker not used for backfeed

Connection	Wire sizes	Torque
DG Breaker (1, 2, 3, 4)	4-1/0 AWG 14-10 AWG 8 AWG 6-4 AWG	2.2 Nm (20 lb-in) 2.8 Nm (25 lb-in) 3.0 Nm (27 lb-in) 5.0 Nm (45 lb-in)
60A Circuit Breaker only	14-10 AWG	2.26 Nm (20 lb-in)
IQ Gateway Breaker	Large screw 2-1/0 AWG 14-3 AWG	5.6 Nm (45 lb-in) 5.1 Nm (45 lb-in)
	Small screw 6 AWG 8 AWG 10-14 AWG	3.6 Nm (32 lb-in) 2.6 Nm (23 lb-in) 2.3 Nm (20 lb-in)
Neutral and ground	10-4 AWG 3-2/0 AWG	5.0 Nm (45 lb-in) 5.6 Nm (50 lb-in)
	Main lug	

Instructions only, rated min. 75°C.  
 Part 1, and all local codes.



TRIP  
40 COMMON TRIP 40  
3.00EI  
100% HOMI  
10 A  
25000 I-  
LISTED  
UL  
155002  
15012/8  
CP-4075

TRIP  
COMMON TRIP  
30

100% HOMI  
10 A  
25000 I-  
LISTED  
UL  
155002  
15012/8  
CP-4075







