



Serial No. **M230907-A0241**



Model Number		<b>MSE395SX9R</b>	
Rated Maximum Power	[W]	<b>395 (-0/+3%)</b>	
Open – Circuit Voltage	[V]	<b>45.2</b>	
Voltage at Pmax	[V]	<b>37.0</b>	
Short – Circuit Current	[A]	<b>11.24</b>	
Current at Pmax	[A]	<b>10.68</b>	
Max. System Voltage	[V]	<b>1000</b>	
Max. Series overcurrent protective device (where required) fuse rating	[A]	<b>20</b>	
Standard test condition		<b>AM=1.5 E=1000W/m<sup>2</sup> Tc=25°C</b>	

300

For field connections, use Cu only, 12AWF (US, CANADA), 4mm<sup>2</sup> (EU, Asia) wires insulated for a minimum of 90°C, rated for wet conditions and resistant to ultra violet radiation (where exposed). See installation manual for PV connector details and compatibility. Avertissement Risque de choc électrique. Ce module produit des tensions élevées dans la lumière du soleil. Risque électrique peut choquer, brûler ou de provoquer la mort. Ne pas toucher la borne.

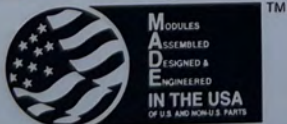


**LISTED**  
PHOTOVOLTAIC MODULE  
OVER 600 VOLTS E364783



Fire Rating : Type 1  
Class of Equipment: Class II  
Design Load: Minimum 3600 Pa front and minimum 1600 Pa back load

Warning  
PV modules generate voltage even with very weak light. Do not open the junction box. Les modules PV produisent tension même en basse lumière. Ne pas ouvrir la boîte de jonction.



Address:  
8303 S. New Braunfels Ave.  
San Antonio, TX 78235

**ASSEMBLED IN THE USA**

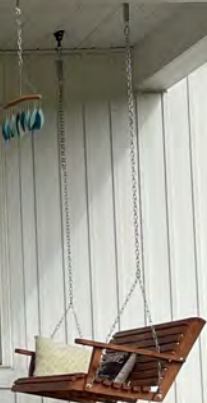


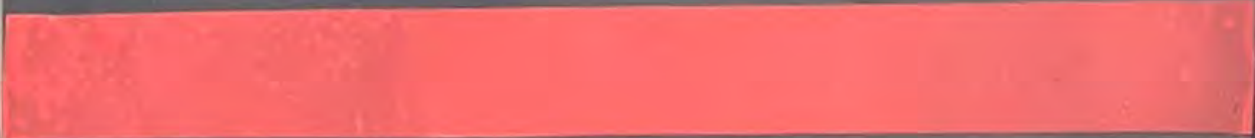
HAPPY HALLOWEEN



WELCOME

TRICK OR TREAT





# WARNING!



OF ELECTRICAL SHOCK, DC OR AC VOLTAGE SOURCES ARE TERMINATED INSIDE THIS EQUIPMENT. EACH CIRCUIT MUST BE INDIVIDUALLY DISCONNECTED BEFORE SERVICING AND WHEN THE PHOTOVOLTAIC ARRAY IS EXPOSED TO LIGHT, IT APPLIES VOLTAGE TO THIS EQUIPMENT.

REFER TO INSTALLATION MANUAL  
VOLUME 200 CUMMINGS  
TORQUE FOR ALL SCREWS & BOLTS 15-20 LB-IN  
CONFORMS TO U.S. STANDARD 1741

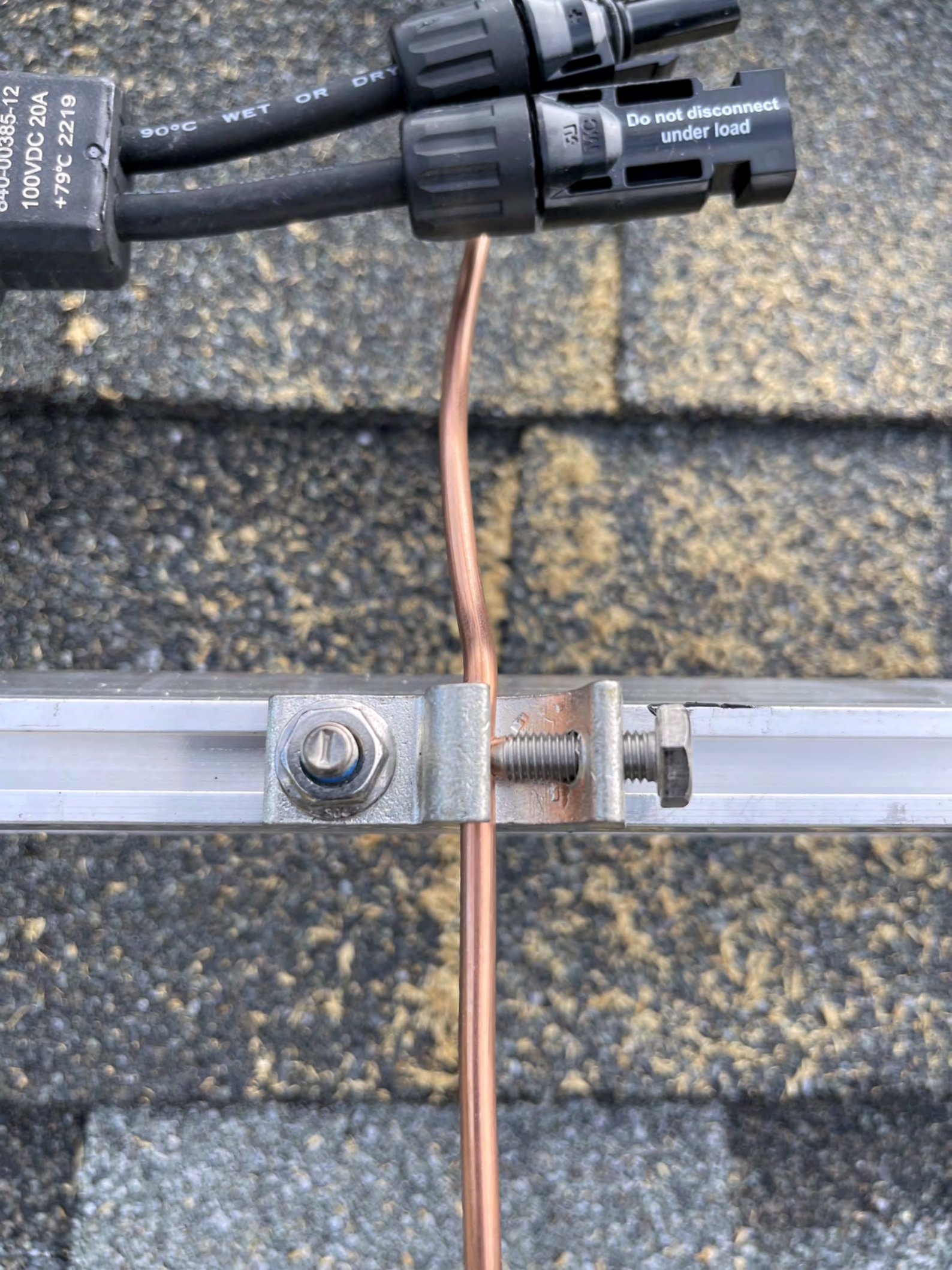
NEMA 3R



640-00385-12  
100VDC 20A  
+79°C 2219

90°C WET OR DRY

Do not disconnect  
under load







840-00385-12  
100VDC 20A  
-79°C 2219



UL LISTED  
ERS-1000

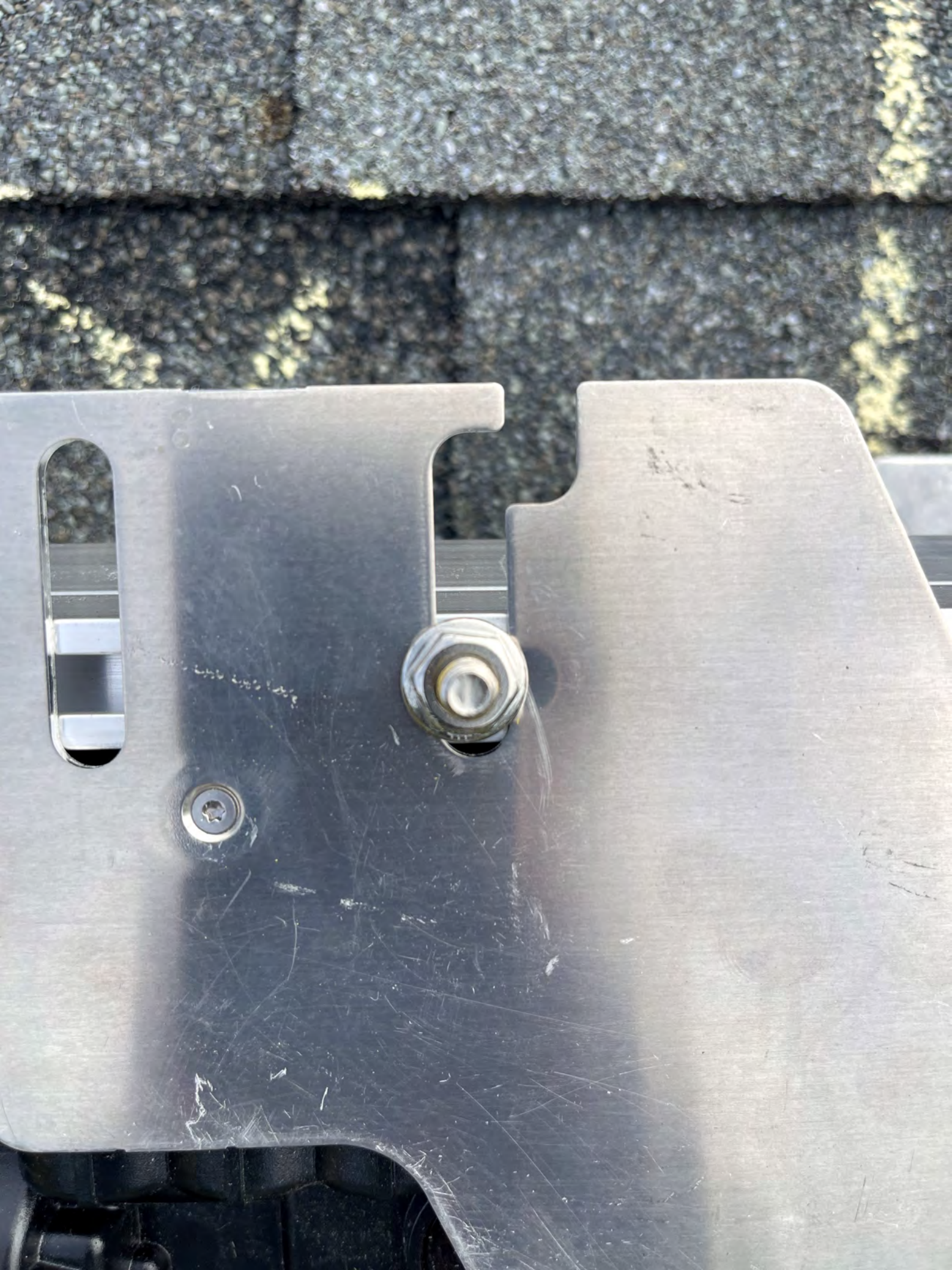
012

SOLAR















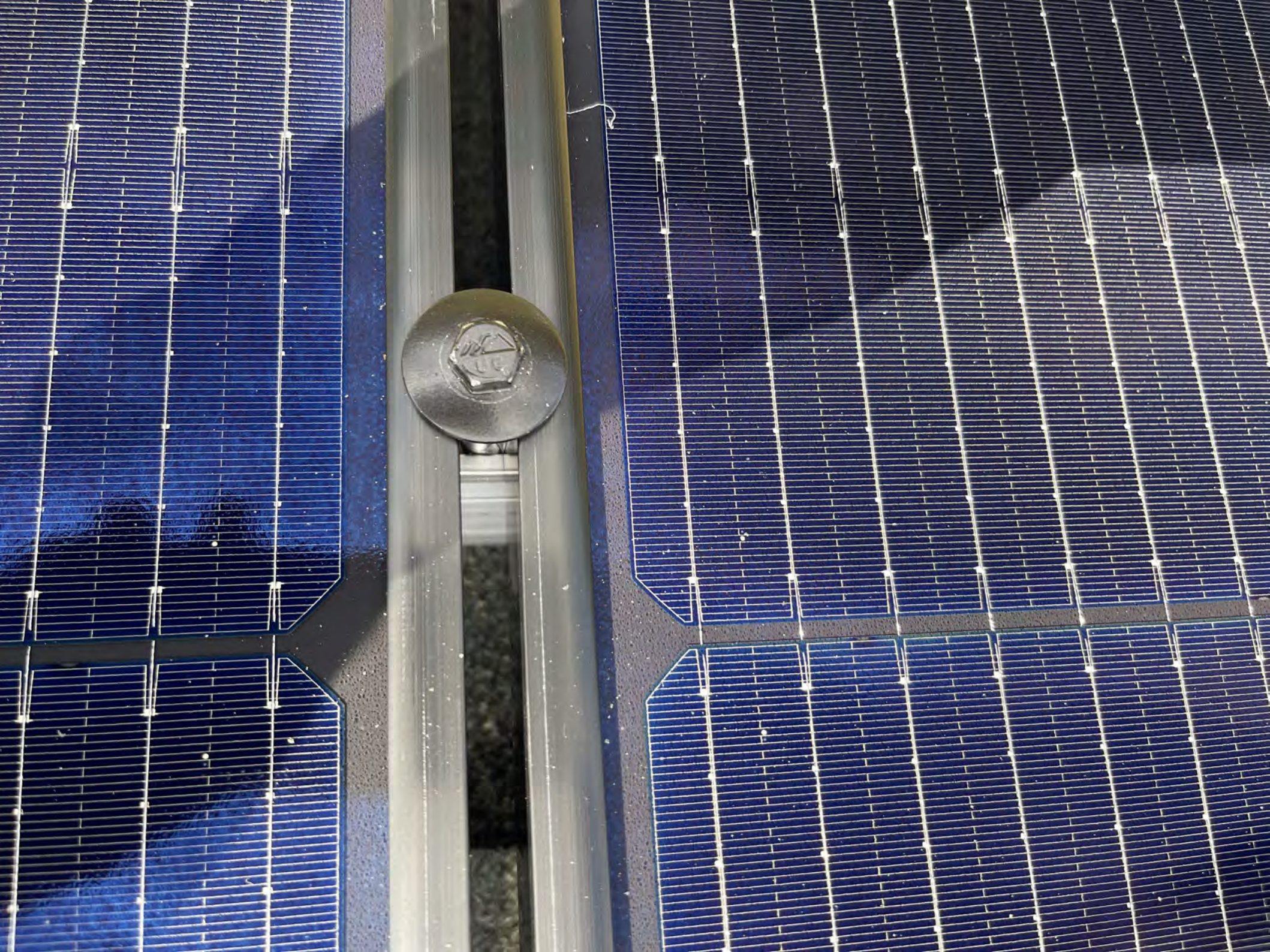
















300 Bruce Johnson RD Lillington, NC 27088

**WARNING!** ⚠️  
USE OF ELECTRICAL SUPPLY FOR AC VOLTAGE SOURCES ARE CONNECTED TO THIS EQUIPMENT. EACH CIRCUIT MUST BE MANUALLY DISCONNECTED BEFORE SERVICING AND WHEN THE PHOTOVOLTAIC ARRAY IS EXPOSED TO LIGHT IT SUPPLIES VOLTAGE TO THE EQUIPMENT.

MAX. DC RATING: 1000 VDC/20 AMP  
MAX. AC RATING: 120 VAC/20 AMP  
ALLOWABLE WIRE: 14 AWG  
MINIMUM OPERATING TEMP: 32°F



Intertek  
5912047 NEMA 3R

REFER TO INSTALLATION MANUAL  
VOLUME 200 80 INCHES  
TIGHTENING ALL SCREWS & BOLTS: 15-20 LB-IN  
CONFORMS TO UL STANDARD 2742









ELECTRICAL - TYPE BF SIZE 1/2  
**CENTAUR** LIQUID TIGHT CONDUIT - SUN RES - MADE IN USA















LP TECHSHIELD

rs  
ce



Bu  
First

**GUARD**<sup>®</sup>

**DX**  
**oxep.com**

omeGuard Building Products  
ontrol Number: 5011961  
rtified To: ICC-ES AC38

ARD

housew

Builders  
FirstSource



LP TECHSHIELD

LP TECHSHIELD



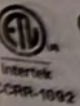


**Builders**  
FirstSource

**WARD**

homeC

housewrap by



Intertek  
CCPR-1092

**Builder**  
First



LP ECH S1 ELD

neG  
by  
OFF  
ETL  
CORP. INC.

OUT BEST  
QUIET, STIFF FLOOR

ranTech





PV SYSTEM kWh METER

**WARNING**

DUAL POWER SUPPLY

SOURCES: UTILITY GRID  
AND PV SOLAR  
ELECTRIC SYSTEM

Holloman Exterminators, Inc.  
Complete Termite and Pest Control  
819 Stewart Street  
Dunn, NC 28334  
910-892-7435 • Fax 910-892-4014  
Lic. # 121 P.W.

**DANGER**

Hazardous Voltage.  
Will cause death, serious injury  
or substantial property damage.  
Turn off power supplying this  
equipment before working inside.



**PELIGRO**

Voltagem perigoso. Causará la  
muerte, lesiones graves o daño  
substantial si se propiada.  
Desconecte el suministro de energía a este  
equipo antes de trabajar en su interior.



TALON  
TYPE 39 ENCLOSURE

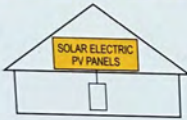
**⚠ WARNING**

TURN OFF PHOTOVOLTAIC  
AC DISCONNECT PRIOR TO  
WORKING INSIDE PANEL

**⚠ WARNING**

ELECTRIC SHOCK HAZARD  
TERMINALS ON THE LINE AND  
LOAD SIDES MAY BE ENERGIZED  
IN THE OPEN POSITION

**SOLAR PV SYSTEM  
EQUIPPED WITH  
RAPID SHUTDOWN**



TURN RAPID SHUTDOWN SWITCH TO  
THE "OFF" POSITION TO SHUT DOWN  
PV SYSTEM AND REDUCE  
SHOCK HAZARD IN THE ARRAY

**CAUTION:**

MULTIPLE SOURCES OF POWER  
THE PV DISCONNECT IS LOCATED  
BESIDE THE SERVICE METER

**EMERGENCY  
DISCONNECT**

DESCONEXIÓN DE EMERGENCIA



**EATON**

General Duty Safety Switch  
Interrupteur de sécurité à usage général  
Interruptor de seguridad de servicio general  
100 A, 240 V~, 60 Hz

Complete ratings inside  
Valeurs nominales complètes à l'intérieur  
Información completa de capacidades en el interior

Further instructions inside  
Autres instructions à l'intérieur  
Instrucciones adicionales en el interior

Made in U.S.A. / Fabriqué aux E.-U. / Hecho en E.U.A.

**⚠ DANGER**  
HAZARDOUS VOLTAGE WILL CAUSE SEVERE INJURY OR DEATH.  
• Never operate switch with cover open.  
• Lock cover against closing in service before doing any work.  
• Always use proper lock-out technique.  
• Always use proper safety procedures.  
• Do not tamper with the switch.  
• Do not use the switch for anything other than its intended purpose.  
• Do not use the switch for anything other than its intended purpose.

**TENSION DANGEREUSE. PEUT CAUSER DES BLESSURES GRAVES OU LA MORT.**  
• Ne jamais manipuler l'interrupteur lorsque le couvercle est ouvert.  
• Verrouillez le couvercle contre la fermeture pendant les travaux.  
• Utilisez toujours la technique correcte de verrouillage.  
• Utilisez toujours les procédures de sécurité appropriées.  
• Ne touchez pas le couvercle.  
• Ne touchez pas le couvercle.  
• Ne touchez pas le couvercle.

**⚠ PELIGRO**  
VOLTAJE PELIGROSO. PUEDE CAUSAR HERIDAS SEVERAS O LA MUERTE.  
• Nunca opere el interruptor con la cubierta abierta.  
• Bloquee la cubierta del interruptor antes de hacer cualquier trabajo.  
• Siempre use la técnica correcta de bloqueo.  
• Siempre use los procedimientos de seguridad apropiados.  
• No toque la cubierta.  
• No toque la cubierta.  
• No toque la cubierta.



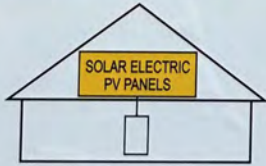
**AC DISCONNECT**  
**PHOTOVOLTAIC SYSTEM**  
**POWER SOURCE**

RATED AC OUTPUT CURRENT **69.5** AMPS

NOMINAL OPERATING AC VOLTAGE **240** VOLTS

**⚠ WARNING**  
**ELECTRIC SHOCK HAZARD**  
TERMINALS ON THE LINE AND LOAD SIDES MAY BE ENERGIZED IN THE OPEN POSITION

**SOLAR PV SYSTEM**  
**EQUIPPED WITH**  
**RAPID SHUTDOWN**



TURN RAPID SHUTDOWN SWITCH TO THE "OFF" POSITION TO SHUT DOWN PV SYSTEM AND REDUCE SHOCK HAZARD IN THE ARRAY

**RAPID SHUTDOWN**  
**SWITCH FOR**  
**SOLAR PV SYSTEM**

ON  
I

OFF  
O



**⚠ WARNING**

PHOTOVOLTAIC SYSTEM  
COMBINER PANEL

DO NOT ADD LOADS

**⚠ WARNING**

POWER SOURCE  
OUTPUT CONNECTION  
DO NOT RELOCATE THIS  
OVERCURRENT DEVICE

**⚠ WARNING**

THIS EQUIPMENT FED BY MULTIPLE  
SOURCES. TOTAL RATING OF ALL  
OVERCURRENT DEVICES, EXCLUDING  
MAIN SUPPLY OVERCURRENT  
DEVICE, SHALL NOT EXCEED  
AMPACITY OF BUSBAR.

 ENPHASE.

PHOTOVOLTAIC POWER SOURCE

 **WARNING**

POWER SOURCE  
OUTPUT CONNECTION  
DO NOT RELOCATE THIS  
OVERCURRENT DEVICE

pvlabels.com 06-216

**CAUTION: SOLAR ELECTRIC  
SYSTEM CONNECTED**

pvlabels.com 03-335

 **DANGER**  
HAZARDOUS VOLTAGE WILL CAUSE SEVERE INJURY OR DEATH.  
Touching live parts, energized parts, equipment, battery, wiring, panels, or  
panels, or components, can cause severe electrical shock or death.  
Always disconnect the system before working on it.

 **PELIGRO**  
ALTO VOLTAJE puede causar lesiones graves o muerte.  
Tocar partes energizadas, partes de equipo, baterías, cables o paneles,  
o componentes, puede causar una descarga eléctrica grave o la muerte.  
Siempre desconecte el sistema antes de trabajar en él.



Electrical meter and breaker panel.

Breaker panel with warning labels.

Small electrical box.

Solar inverter with warning labels.

ENPHASE microinverter.

Small electrical box.

Large coil of black cables.

Propane tank.





RAP  
S  
SOLA







5-J006

STOP

CAUTION

CUIDADO

ADVERTENCIA

72

71

70

69

68

67

MADE IN CHINA  
FABRICADO NA CHINA  
HECHO EN CHINA





 **WARNING**

POWER SOURCE  
OUTPUT CONNECTION  
DO NOT RELOCATE THIS  
OVERCURRENT DEVICE

pvlabels.com 05-216

**CAUTION: SOLAR ELECTRIC  
SYSTEM CONNECTED**

pvlabels.com 03-335

 **DANGER**

PRELAVAZIONE VOLTAGE: NON TOCCARE SEVERE RISCHIO DI SCARICA  
Turn OFF power supplying the equipment before working inside.  
L'AVVERTENZA: RISPETTO CAUTELA DEI SEVERI RISCHI DI SCARICA  
L'equipement doit être débranché avant d'y effectuer des travaux.

**PELIGRO**

ALTA TENSIONE: PERICOLO DI SCARICA ELETTRICA  
Interruzione di alimentazione da avvenire solo dopo aver  
verificato lo stato di carica del sistema.





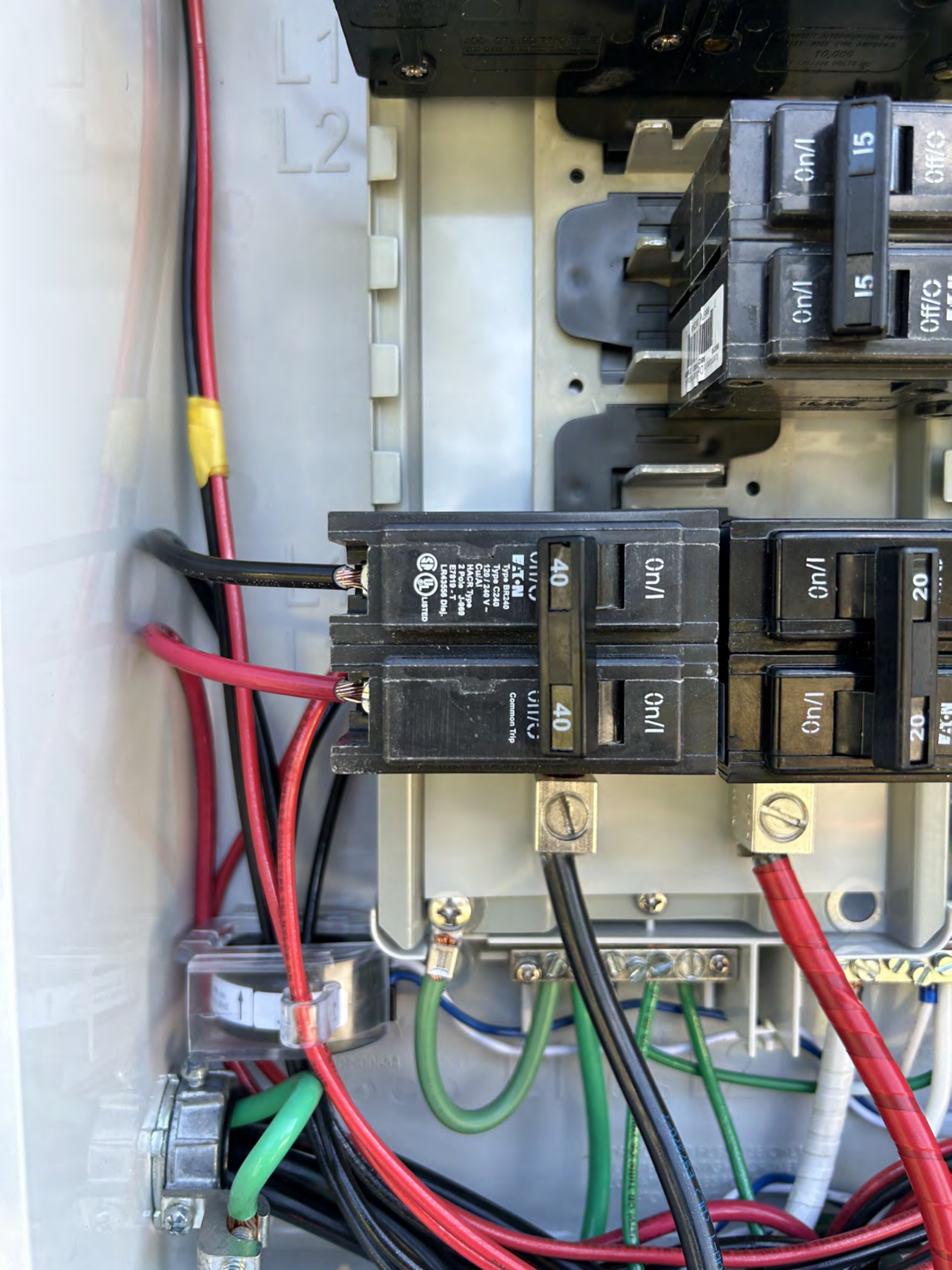


**F328@ 2**  
When making technical  
inquiries, Please refer to  
this number & Cat. No.  
30-17135

ENCLOSURE  
ISSUE NO. 012  
E8741

The image shows a 20-amp circuit breaker assembly. It consists of two individual breakers and a common trip mechanism. The breakers are labeled "20 On/I" and "20 On/I". The common trip is labeled "20 On/I Common Trip". The assembly is mounted on a metal panel with various wires connected to it. The wires are color-coded: red, black, white, and green. The breakers are labeled with "OFF" and "ON" positions. The common trip is labeled "Common Trip". The assembly is mounted on a metal panel with various wires connected to it. The wires are color-coded: red, black, white, and green. The breakers are labeled with "OFF" and "ON" positions. The common trip is labeled "Common Trip".

A terminal block with five green screws. A green wire is connected to the second terminal from the left. The terminal block is mounted on a metal panel.



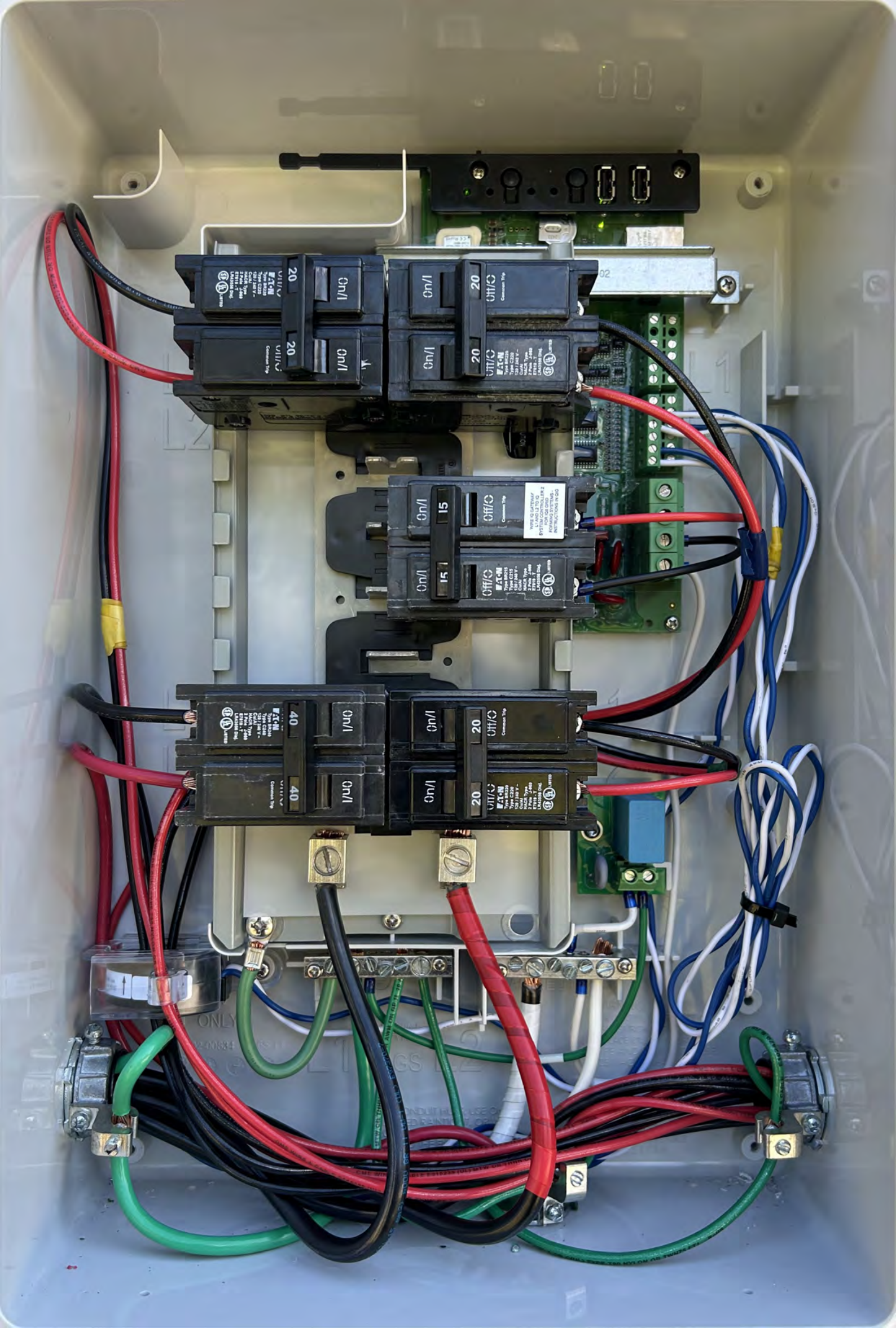
L1  
L2

40 On/I  
40 On/I

15 Off/O  
15 Off/O  
20 On/I  
20 On/I

EATON  
Type BR240  
Type C240  
150/240V -  
Cu/Al  
HACR Type  
2 Poles 4-800  
E7919-T  
LR45558 DMJ  
Listed

Common Trip



W  
A PELICAN  
CORPORATION  
MADE IN THE U.S.A.

NOMINAL OPERATING AC VOLTAGE **240 VOLTS**  
**WARNING**  
ELECTRIC SHOCK HAZARD  
TERMINALS ON THE LINE AND  
LOAD SIDES MAY BE ENERGIZED  
IN THE OPEN POSITION

**SOLAR PV SYSTEM  
EQUIPPED WITH  
RAPID SHUTDOWN**



TURN RAPID SHUTDOWN SWITCH TO  
THE 'OFF' POSITION TO SHUT DOWN  
PV SYSTEM AND REDUCE  
SHOCK HAZARD IN THE ARRAY

**RAPID SHUTDOWN  
SWITCH FOR  
SOLAR PV SYSTEM**



**PHOTOVOLTAIC POWER SOURCE**

**WARNING**  
CAUTION SOLAR ELECTRIC  
SYSTEM CONNECTED



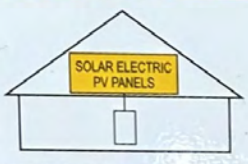
47305-82FL  
NEMA APPROVED  
#1002104

**⚠ WARNING**  
TURN OFF PHOTOVOLTAIC  
AC DISCONNECT PRIOR TO  
WORKING INSIDE PANEL

**EMERGENCY  
DISCONNECT**  
DESCONEXIÓN DE EMERGENCIA

**⚠ WARNING**  
ELECTRIC SHOCK HAZARD  
TERMINALS ON THE LINE AND  
LOAD SIDES MAY BE ENERGIZED  
IN THE OPEN POSITION

**SOLAR PV SYSTEM  
EQUIPPED WITH  
RAPID SHUTDOWN**



TURN RAPID SHUTDOWN SWITCH TO  
THE "OFF" POSITION TO SHUT DOWN  
PV SYSTEM AND REDUCE  
SHOCK HAZARD IN THE ARRAY

**CAUTION:**  
MULTIPLE SOURCES OF POWER  
THE PV DISCONNECT IS LOCATED  
BESIDE THE SERVICE METER



EQUIPPED WITH  
RAPID SHUTDOWN



TURN RAPID SHUTDOWN SWITCH TO  
THE "OFF" POSITION TO SHUT DOWN  
PV SYSTEM AND REDUCE  
SHOCK HAZARD IN THE ARRAY

RAPID SHUTDOWN  
SWITCH FOR  
SOLAR PV SYSTEM





General Duty Safety Switch  
 Interrupteur de sécurité à usage général  
 Interruptor de seguridad de servicio general  
 100 A, 240 V~, 60 Hz

Complete ratings inside  
 Valeurs nominales complètes à l'intérieur  
 Información completa de capacidades en el interior

Further instructions inside  
 Autres instructions à l'intérieur  
 Instrucciones adicionales en el interior

Made in U.S.A. / Fabriqué aux É.-U. / Hecho en E.U.A.

**⚠ DANGER**  
**HAZARDOUS VOLTAGE. WILL CAUSE SEVERE INJURY OR DEATH.**  
 • Never operate with cover open.  
 • Turn OFF power ahead of switch before doing any work inside. Replace all parts. Close cover before turning power ON.  
**TENSION DANGEREUSE. PEUT CAUSER DES BLESSURES GRAVES OU LA MORT.**  
 • Ne jamais manœuvrer l'interrupteur lorsque le couvercle est ouvert.  
 • Déconnecter la alimentation de travail de l'interrupteur avant toute intervention. Remplacer les pièces. Fermer le couvercle avant de remettre sous tension.  
**⚠ PELIGRO**  
**VOLTAJE PELIGROSO. PUEDE CAUSAR HERIDAS SEVERAS O LA MUERTE.**  
 • Nunca opere el interruptor con la cubierta abierta.  
 • Desconectar la alimentación del interruptor antes de cualquier trabajo de mantenimiento. Reemplazar todas las partes. Cerrar la cubierta antes de energizar el interruptor.

30-43081



**AC DISCONNECT**  
**PHOTOVOLTAIC SYSTEM**  
**POWER SOURCE**

---

RATED AC OUTPUT CURRENT **69.5** AMPS

NOMINAL OPERATING AC VOLTAGE **240** VOLTS

---

**⚠ WARNING**  
**ELECTRIC SHOCK HAZARD**  
**TERMINALS ON THE LINE AND**  
**LOAD SIDES MAY BE ENERGIZED**  
**IN THE OPEN POSITION**

pvsheds.com 03-208

pvsheds.com 06-218

**SOLAR PV SYSTEM**  
**EQUIPPED WITH**  
**RAPID SHUTDOWN**

TURN RAPID SHUTDOWN SWITCH TO THE "OFF" POSITION TO SHUT DOWN PV SYSTEM AND REDUCE SHOCK HAZARD IN THE ARRAY

06-117

**RAPID SHUTDOWN**  
**SWITCH FOR**  
**SOLAR PV SYSTEM**

06-118

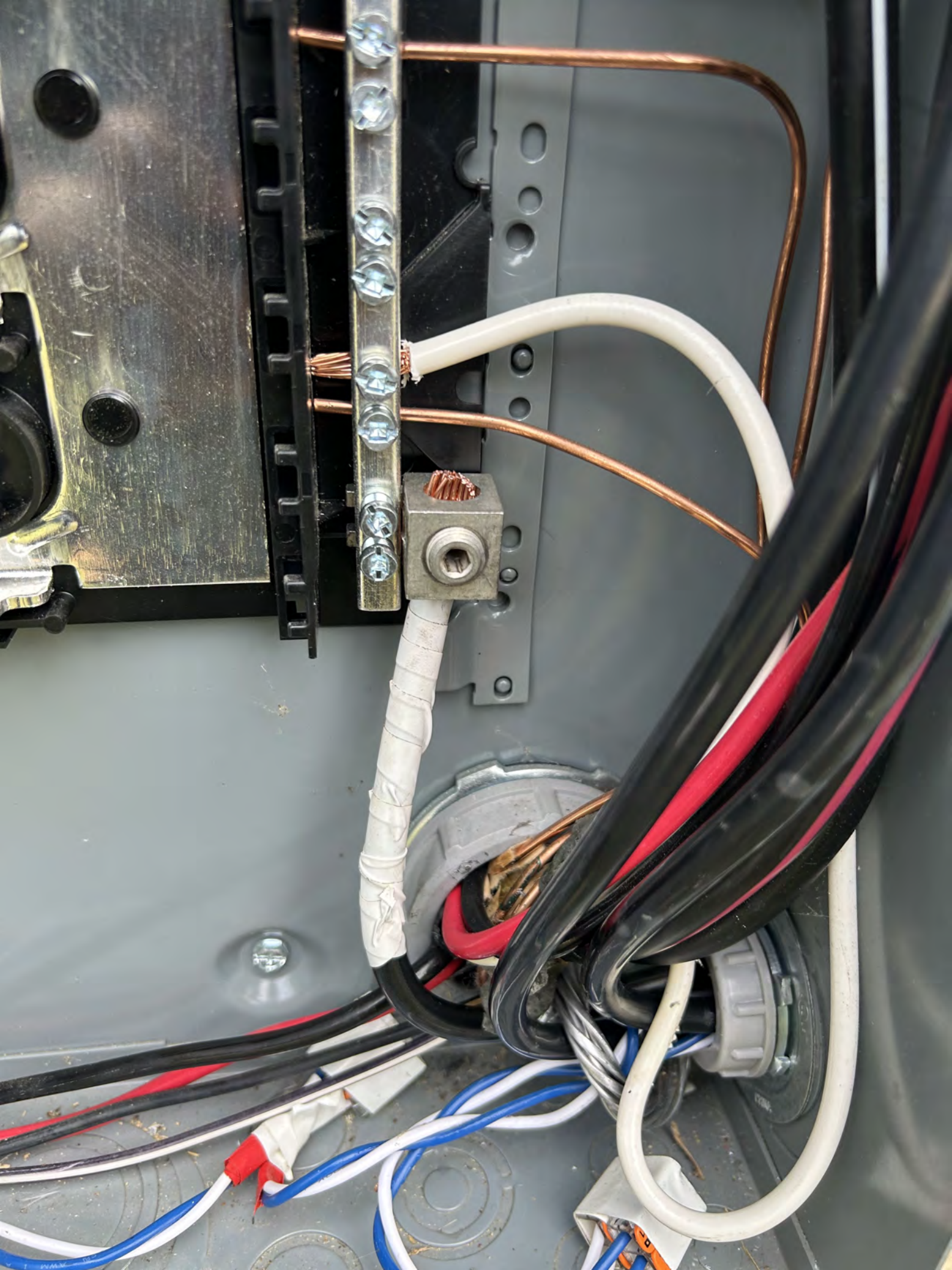
ON  
I

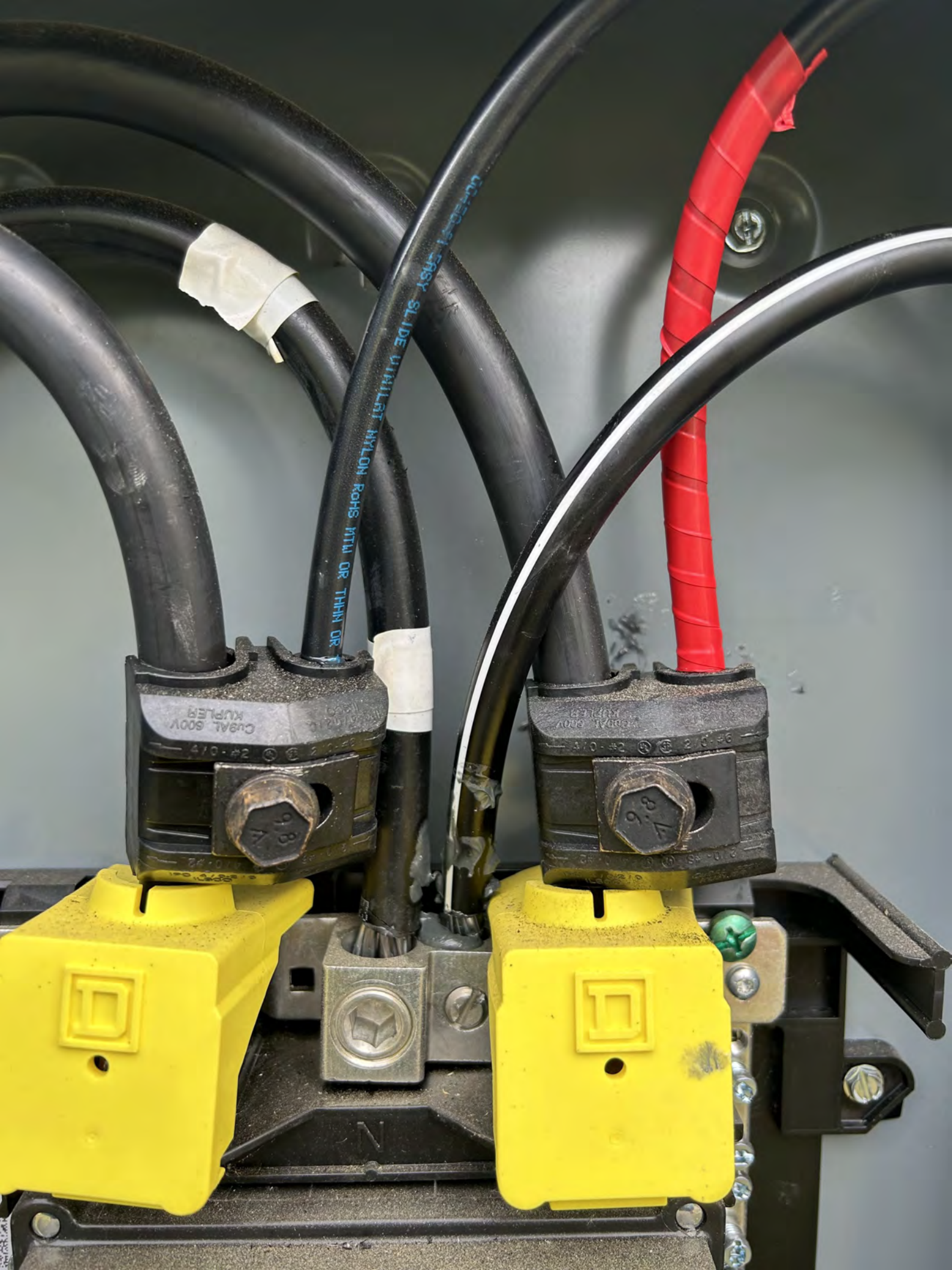
OFF  
O

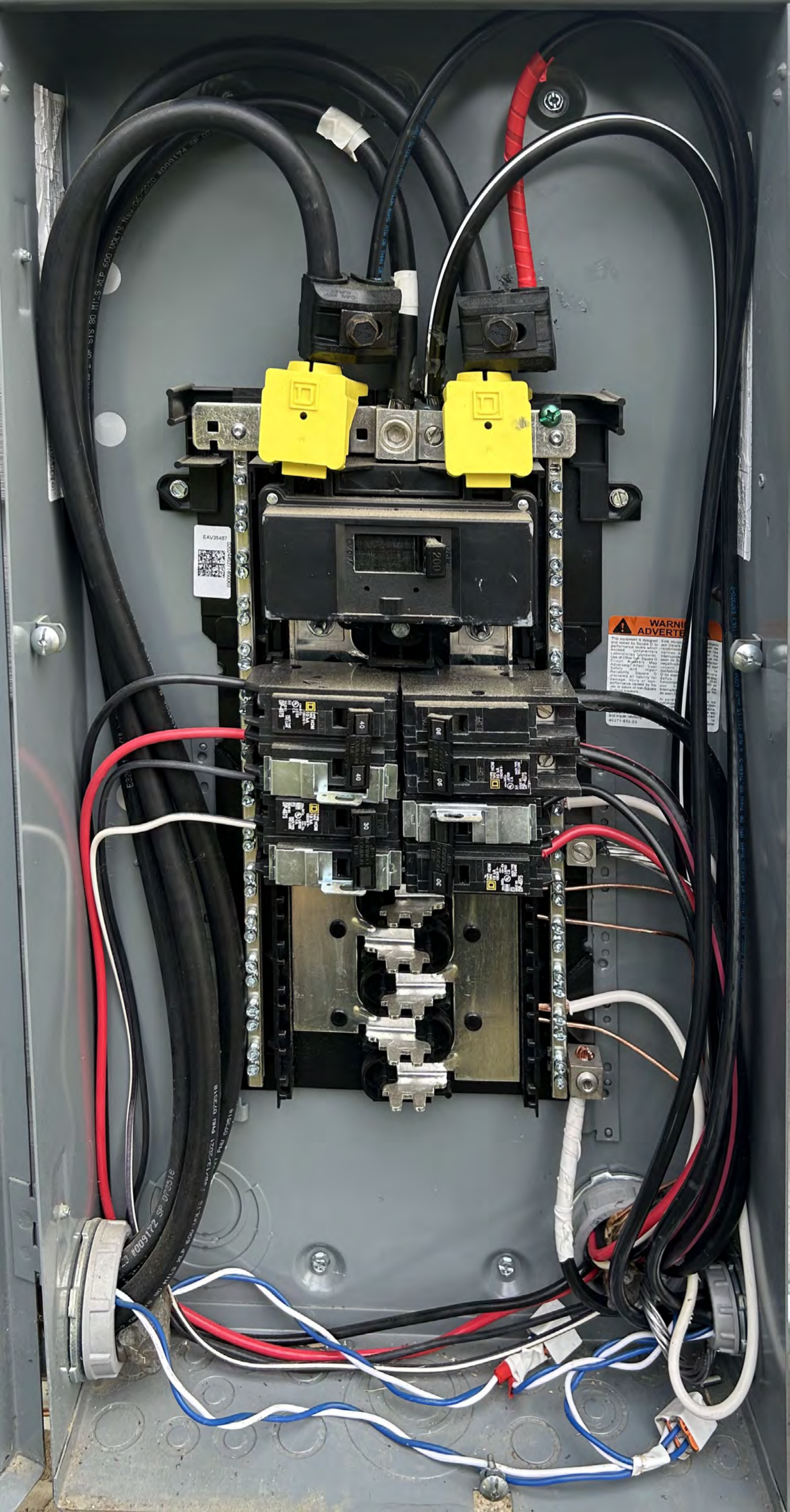












EAV35487  
QR CODE  
000000000000

**WARNING**  
**ADVERTENCIA**  
The equipment is designed and tested to operate at the performance levels which are stated in the specifications. Use of other type fuses, circuit breakers, or other safety devices may result in equipment damage, injury or death. Do not attempt to repair or modify the equipment unless authorized by the manufacturer. Do not touch the equipment when it is energized. For more information, contact the manufacturer at 40271-850-03.

600 VOLT 80 HI'S XLP 600 VOLT 80 HI'S XLP 600 VOLT 80 HI'S XLP 600 VOLT 80 HI'S XLP

600 VOLT 80 HI'S XLP 600 VOLT 80 HI'S XLP 600 VOLT 80 HI'S XLP 600 VOLT 80 HI'S XLP

40

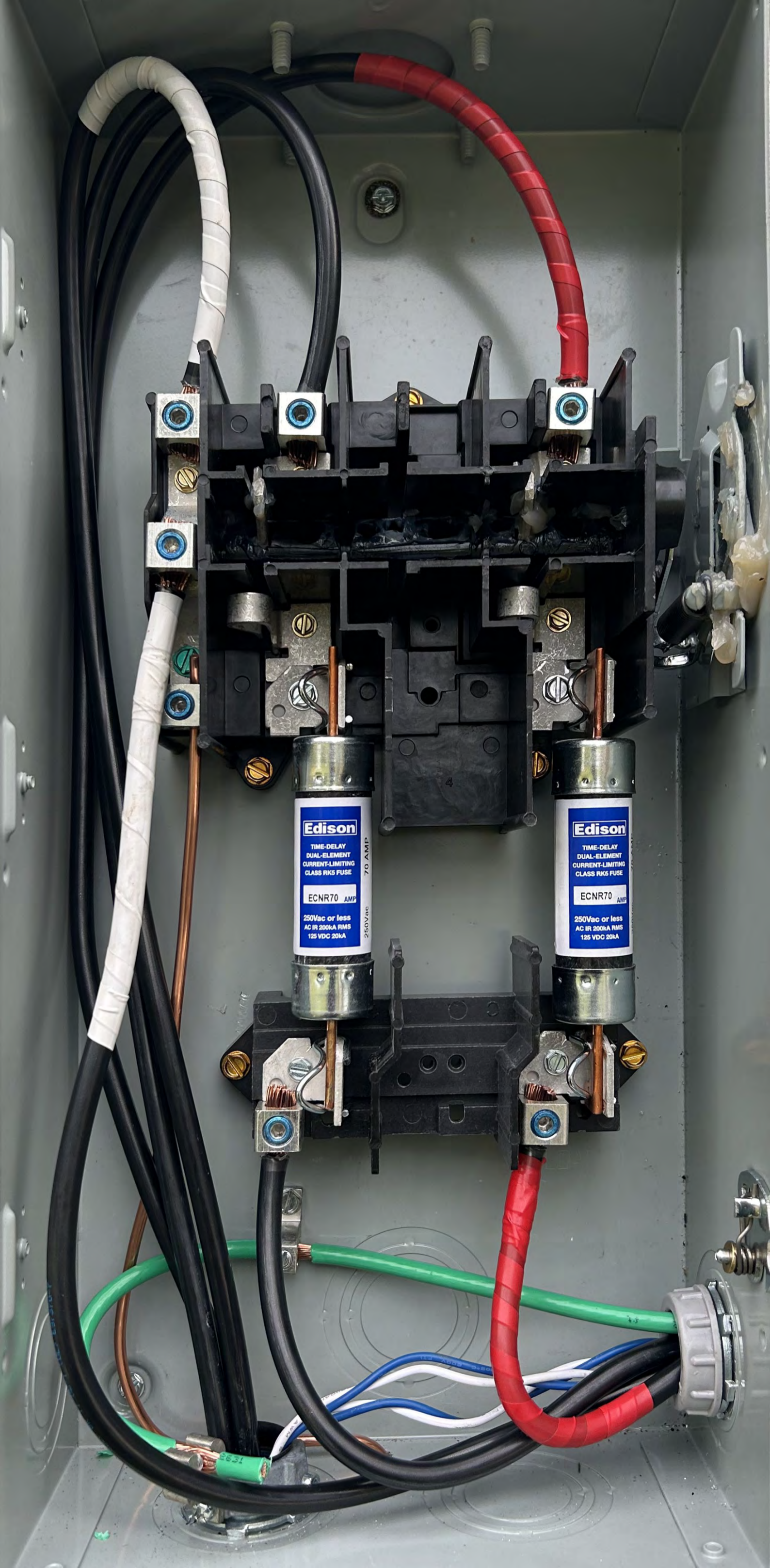
20

40

30

20

40



**Edison**  
TIME-DELAY  
DUAL-ELEMENT  
CURRENT-LIMITING  
CLASS RK5 FUSE  
**ECNR70 AMP**  
70 AMP  
250Vac or less  
AC IR 200kA RMS  
125 VDC 20kA  
250VAC

**Edison**  
TIME-DELAY  
DUAL-ELEMENT  
CURRENT-LIMITING  
CLASS RK5 FUSE  
**ECNR70 AMP**  
70 AMP  
250Vac or less  
AC IR 200kA RMS  
125 VDC 20kA  
250VAC