







**CAUTION**  
HOT SURFACES TO REDUCE THE RISK OF BURNS DO NOT TOUCH. RISK OF ELECTRIC SHOCK WHEN THE PHOTOVOLTAIC ARRAY IS EXPOSED TO LIGHT. IT SUPPLIES A DC VOLTAGE TO EQUIPMENT. COVER PV MODULE WITH OPAQUE MATERIAL BEFORE CONNECTING OR DISCONNECTING. ZERO CURRENT IS SOURCED INTO DURING FAULT. SYSTEM ARE ENERGIZED AND MAY BE ENERGIZED.

**WARNING**  
ELECTRIC SHOCK HAZARD. THE SYSTEM ARE UNGROUNDING AND MAY BE ENERGIZED.

**AVERTISSEMENT**  
RISQUE DE CHOC ELECTRIQUE PHOTOVOLTAIQUE EST EXPOSEE. TENSION CE EST FOURNIE A CE SURFACES CHAUDES. NE PAS TOUCHER. RISQUES RISQUES DE BRULURE. REPRIRES INJECTE PAR LE CAS DE DEFALANCE DANS LE TOUJOURS NULL.



Do not disconnect  
cables from array









MADE IN USA 0772307

29163-8 PV WIRE 12AWG 105°C DRY 90°C WET 100°C

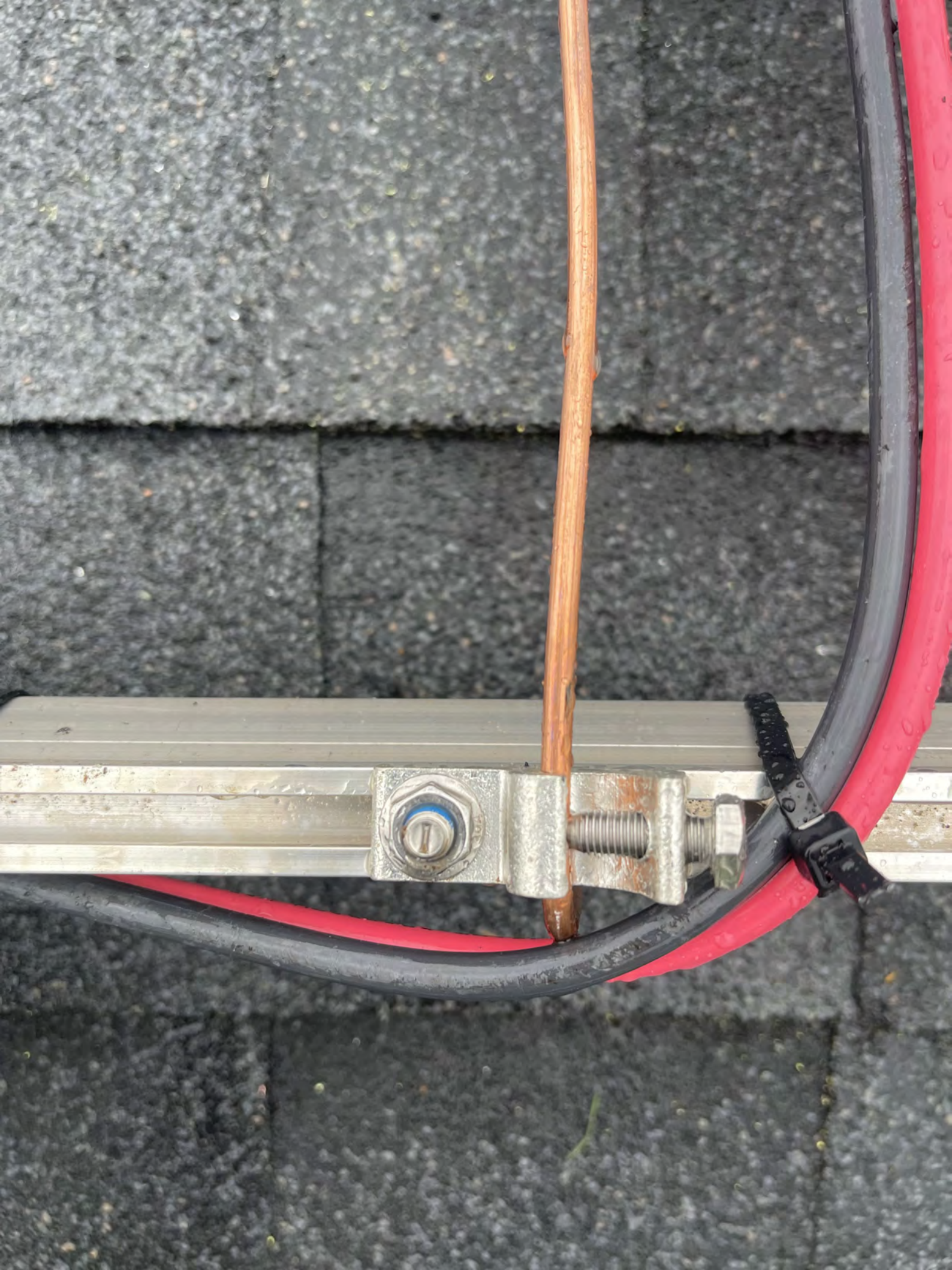
1000V





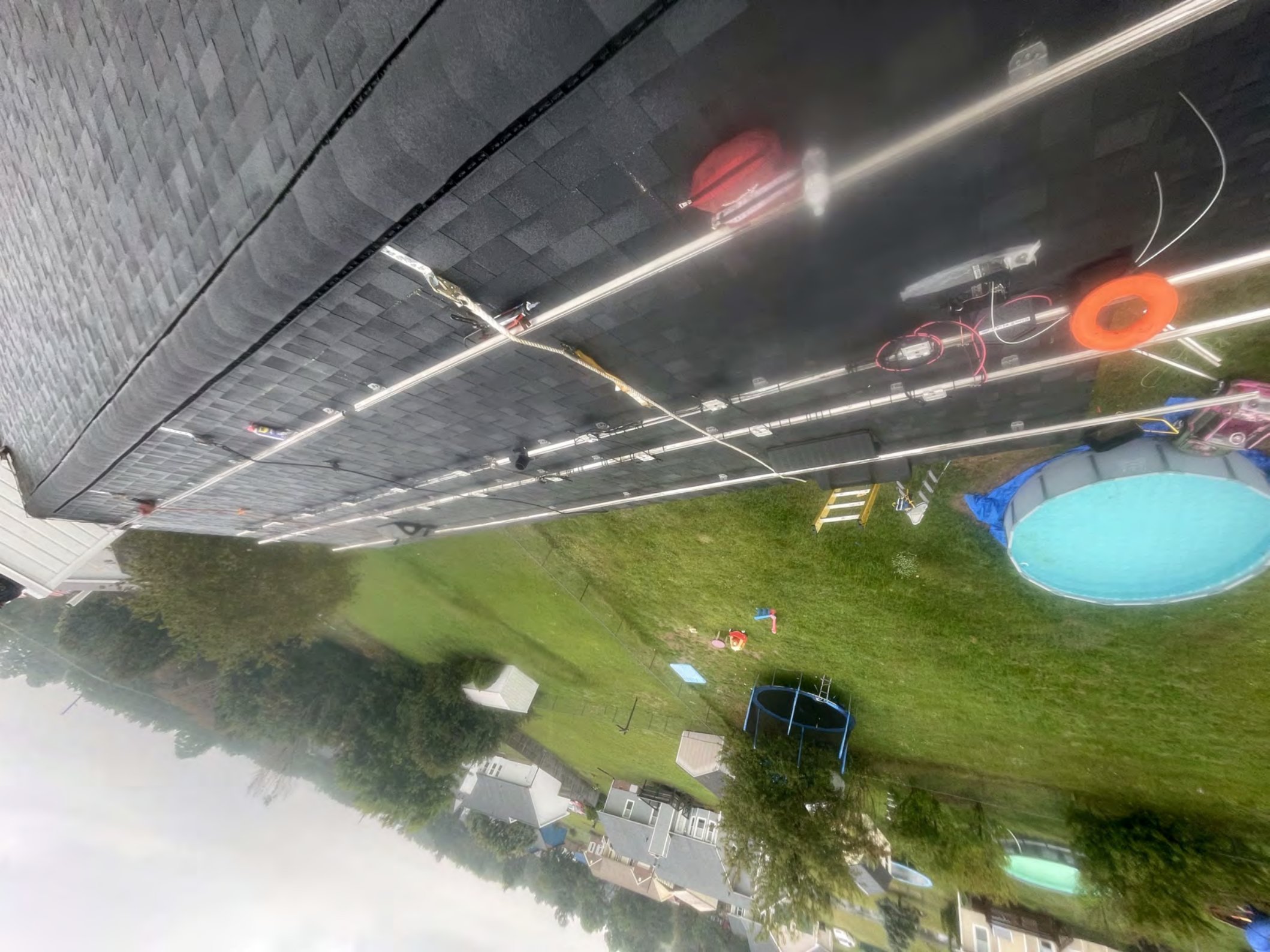








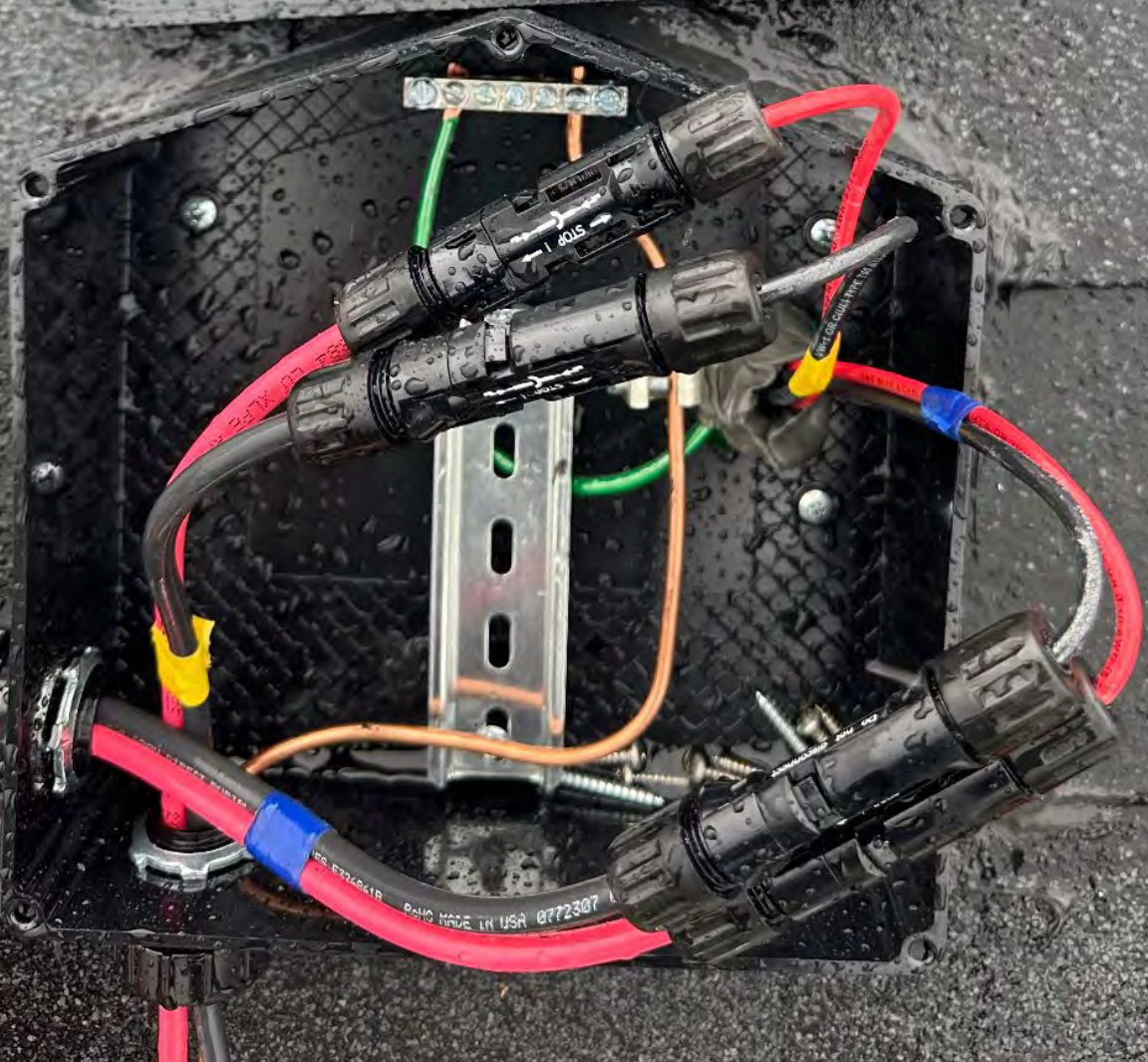






355 Eileen Dr Spring Lake, NC 28390

REFER TO INSTALLATION  
VOLUME 200 CU INCHES  
TORQUE FOR ALL SCREWS  
CONFORMS TO UL STAN





PROTECTIVE FLEXIBLE GAS PIPE



CAUTION - COMBUSTIBLE  
MAY SMOLDER  
OR BURN IF NOT PROTECTED

PHOTOVOLTIC POWER SOURCE





PHOTOVOLTAC POWER SOURCE



PHOTOVOLTAIC POWER SOURCE

CENTAUR

CE

CENTAUR

CE





POWER SOURCE



PROTECTIVE FLEXIBLE CONDUIT

10/10/00



ELECTRICAL CONDUIT



PHOTOVOLTAIC POWER

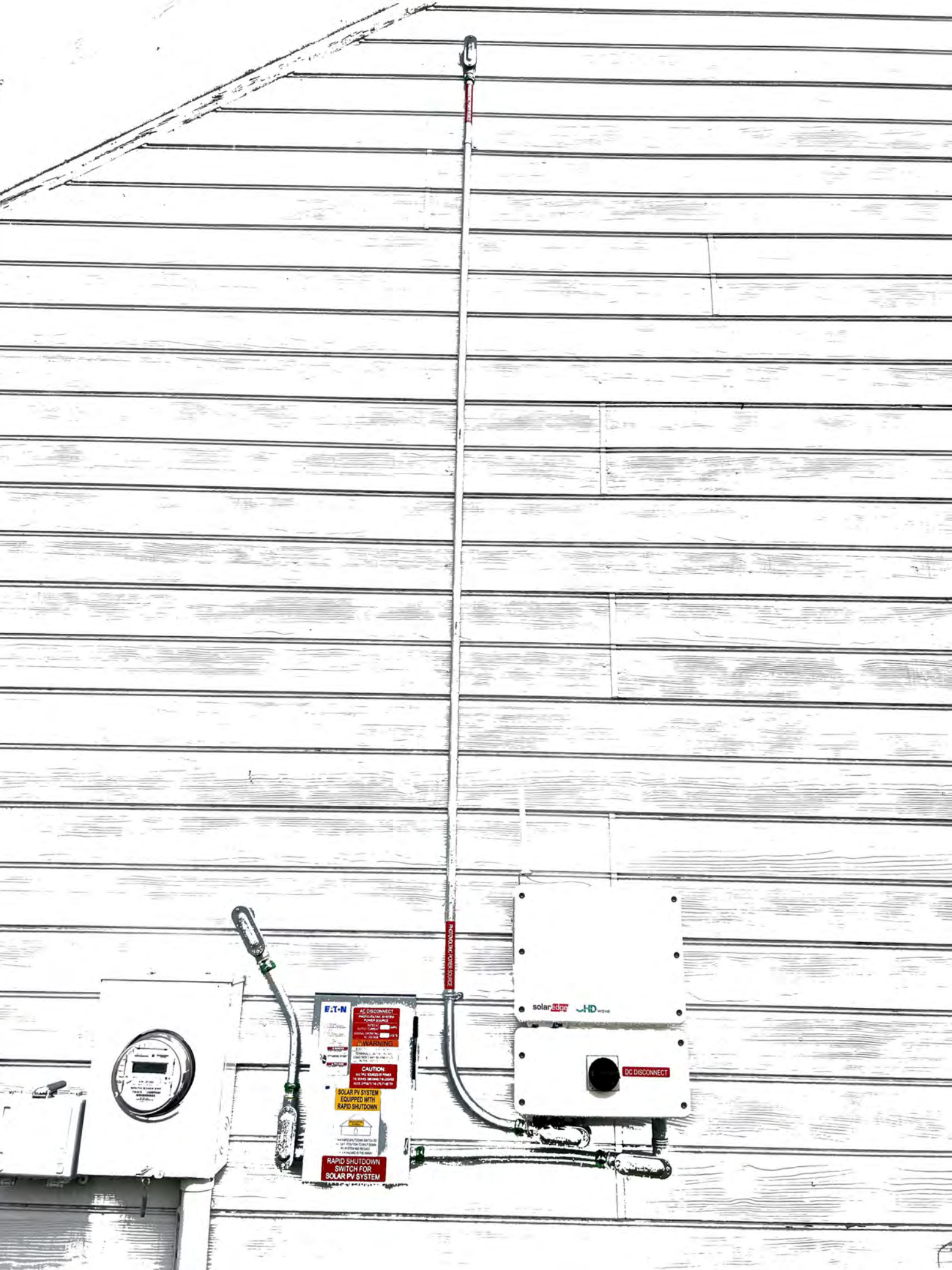


solar**edge**

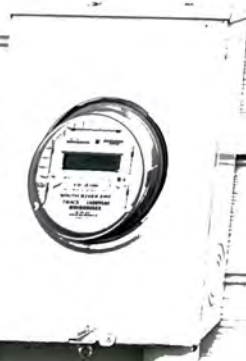
 HD wave



**DC DISCONNECT**  
pvlab.com 03-324



PHOTOVOLTAIC POWER SOURCE



**F-T-N**

**DC DISCONNECT**  
 FOR SOLAR PV SYSTEM  
 RATED 30 AMP  
 125 VOLT  
 1-POLE  
 CONTROL OPERATING  
 1/2 IN. (12.7 mm) DIA.  
 1/4 IN. (6.35 mm) DIA.

**WARNING**  
 DANGER OF ELECTRIC SHOCK  
 AND SHORT CIRCUIT  
 HAZARD. ALWAYS  
 DEENERGIZE BEFORE  
 WORKING ON THIS  
 EQUIPMENT.

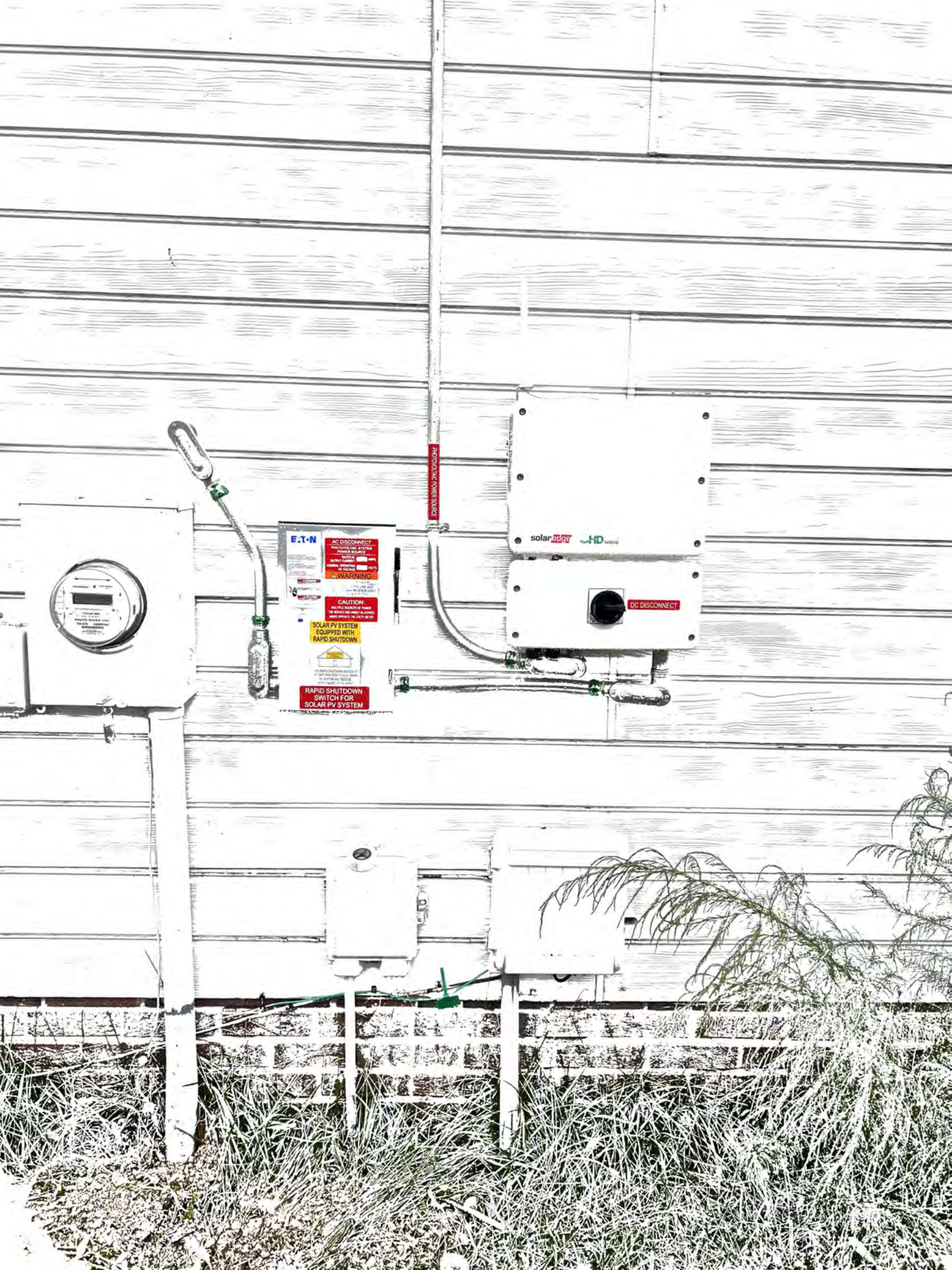
**CAUTION**  
 ALL PV SYSTEMS  
 MUST BE EQUIPPED WITH  
 A RATED DC DISCONNECT  
 SWITCH.

**SOLAR PV SYSTEM  
 EQUIPPED WITH  
 RAPID SHUTDOWN**

**RAPID SHUTDOWN  
 SWITCH FOR  
 SOLAR PV SYSTEM**

**solarEdge JHD**

**DC DISCONNECT**



PHOTOVOLTAIC POWER SOURCE

**E-T-N**

**AC DISCONNECT**  
PROTECTS THE SYSTEM  
FROM THE SOURCE

**WARNING**  
DO NOT TOUCH  
DO NOT OPEN  
DO NOT REMOVE

**CAUTION:**  
DO NOT TOUCH IF POWER  
IS PRESENT. THIS SWITCH  
IS NOT A FUSE

**SOLAR PV SYSTEM  
EQUIPPED WITH  
RAPID SHUTDOWN**

**RAPID SHUTDOWN  
SWITCH FOR  
SOLAR PV SYSTEM**

solar**EDGE** HD wave

**DC DISCONNECT**













11  
71

6F  
72

MADE IN CHINA  
FABRICADO NA CHINA  
HECHO EN CHINA

CAUTION CUIDADO ADVERTENCIA  
**STOP**

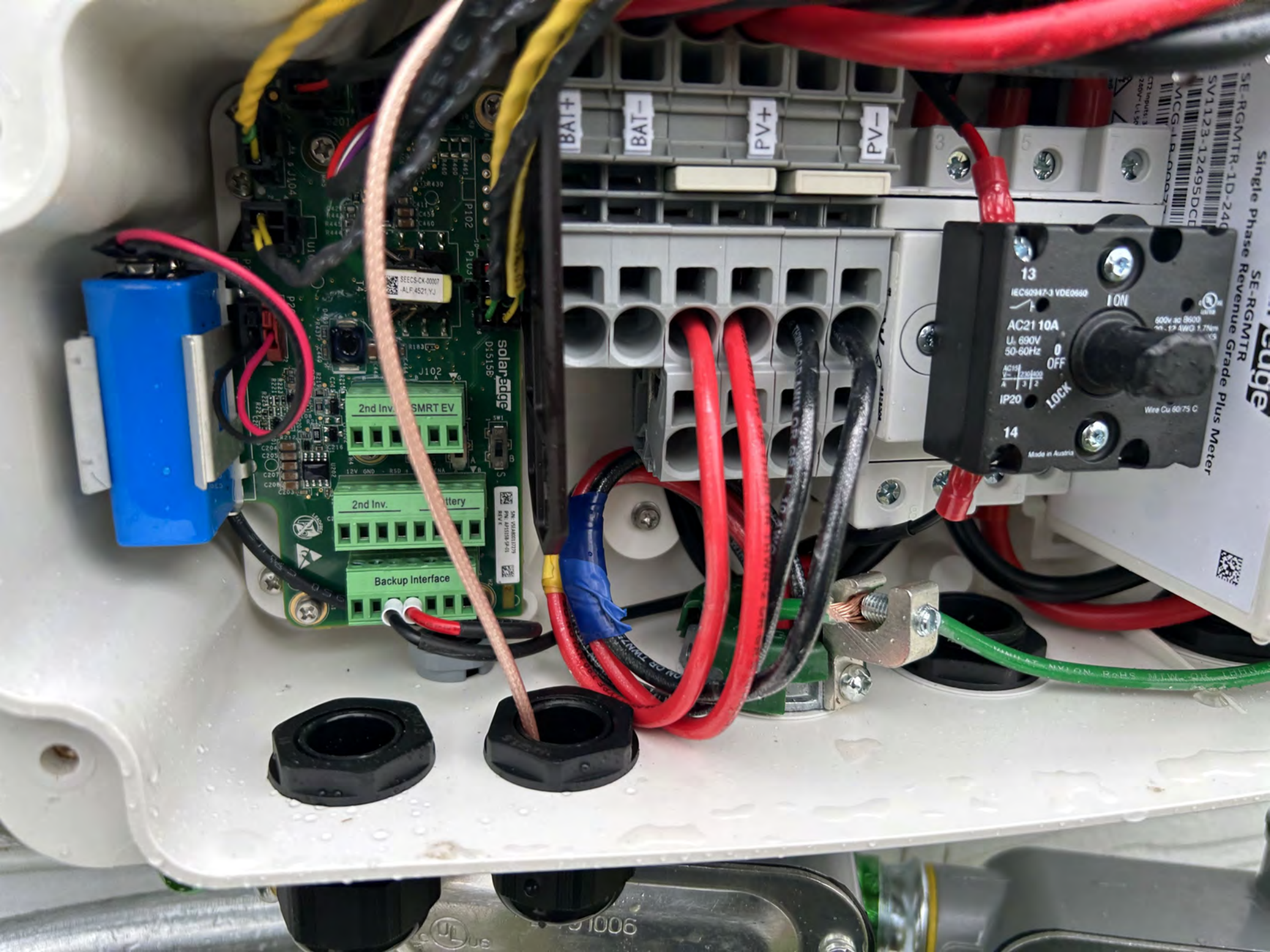
5-J006  
20920











BAI+

BAT-

PV+

PV-

SECCS-CK-0007  
ALP 4521.YJ

solar edge  
D1515B

2nd Inv. SMRT EV

2nd Inv. Battery

Backup Interface

13

IEC60947-3 VDE0660

AC21 10A

U: 690V

50-60Hz

AC15  
A 3 2

IP20

14

Made in Austria

600V ac 3600  
mm. 19 4WQ 1.7mm

Wire Cu 60/75 C

SE-RGMTR-1D-240  
Single Phase Revenue Grade Plus Meter  
SE-RGMTR

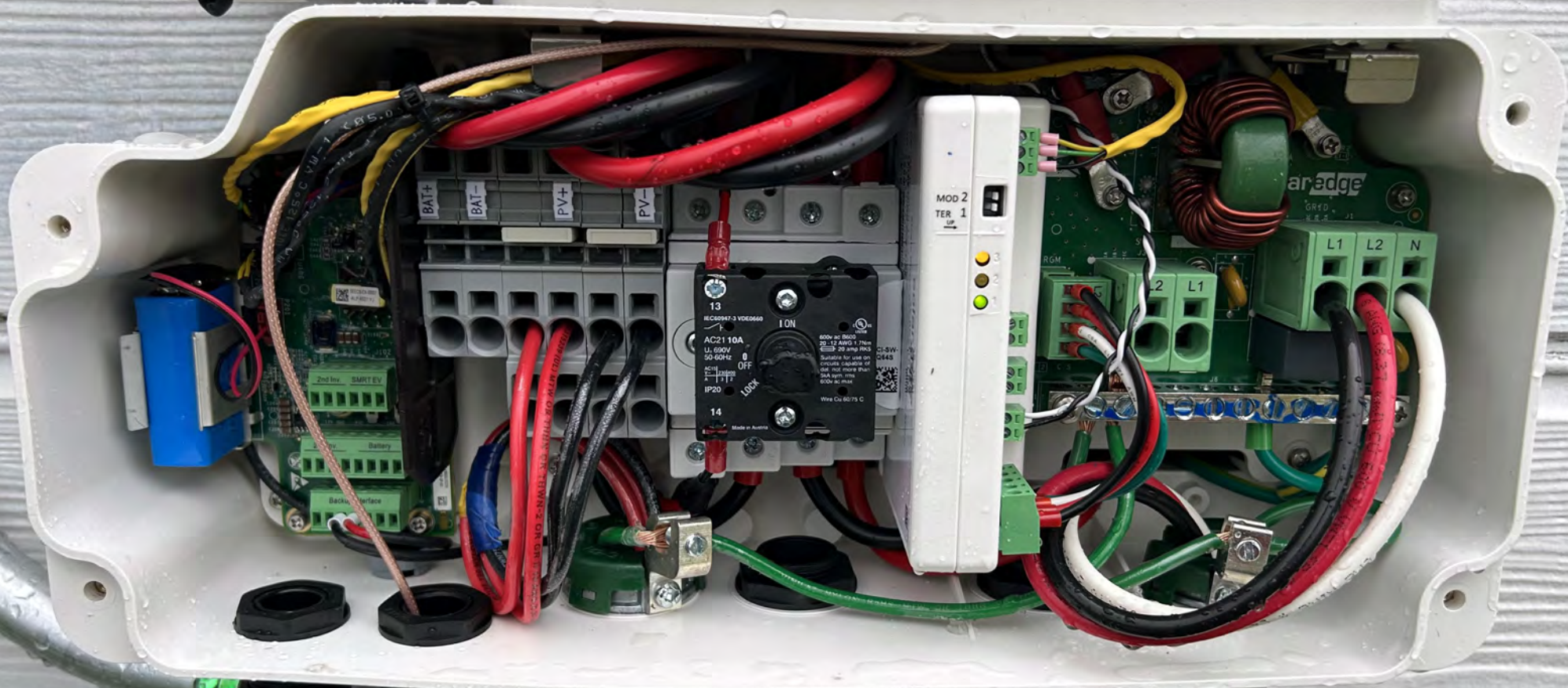
SV1123-12495DDCE  
MCG-1B-0002

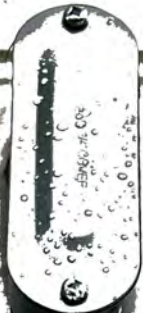


1006

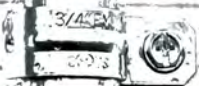
Solar edge

HD wave





PHOTOVOLTAIC POWER SOURCE



**solar edge**

**SE6000H – US**

**Grid Support Utility Interactive  
Non – Isolated Photovoltaic Inverter**

Operating Voltage Range	270 – 480Vdc
Max Input Current	16.5A <sub>dc</sub>
Max Continuous Output Power	5000W <sub>ac</sub> @ 208V 6000W <sub>ac</sub> @ 240V
Voltage Min – Nom – Max	183 – 208 – 229V <sub>ac</sub>
Max Continuous Output Current	211 – 240 – 264V <sub>ac</sub>
Max Output Fault Current	24A <sub>ac</sub> @ 208V 25A <sub>ac</sub> @ 240V
Max Utility Backfeed Current	72A <sub>ac</sub>
Frequency Min – Nom – Max	0A <sub>ac</sub>
Output Power Factor	59.3 – 60.0 – 60.5Hz
Max Ambient Temperature	+/- 0.85 – 1
Enclosure	60 C
With integrated ground fault protection per NEC 690.35 (C)	IP65 / Type 3R
Type 1 Photovoltaic Arc – Fault Circuit – Protection	

**WI – FI Password: Yt7m9RCd**

**Activation: Zmm4 uAND Rd1m wIAW gNkb ItIU KMA =**

**WIFI MAC:  
84:D6:C5:4A:7F:D1  
ZigBee MAC:**



**PN: SE6000H – USSNBBL14**

**SN: SV1223 – 07501DDDD – 30**



# PHOTOVOLTAIC RAPID SHUTDOWN SYSTEM

**solar**edge

7501DDDD - 30



ETL LISTED  
CONFORMS TO  
ANSI/UL 1741  
CERTIFIED TO  
CAN/CSA  
C22.2 NO 107



Intertek  
4004590



Contains FCC ID:2AGPT-PLNX, IC:20916-PNLX. The enclosed device complies with part 15 of the FCC Rules. Operation is subject to the following two conditions:  
(i.)this device may not cause harmful interference and  
(ii.)this device must accept any interference received, including interference that may cause undesired operation.  
PATENT MARKING NOTICE:SEE [www.solaredge.com/groups/patent](http://www.solaredge.com/groups/patent) Made In Vietnam



# StorEdge Connection Unit

Max DC Voltage (PV/Battery)	480 Vdc
Max DC Current (PV)	51 Adc
Max Continuous DC Current (Battery)	31 Adc
Max AC Voltage	264 Vac
AC-Single Phase Frequency	50/60 Hz
Max AC Current (Grid)	40 Aac

For more details refer to the installation guide

Patent marketing notice: see [WWW.SOLAREEDGE.COM/patent](http://WWW.SOLAREEDGE.COM/patent)

DCD-1PH-US-P3H-F-I

PN:

SV1223-19191CA60-4C

SN:

Made in Vietnam



Intertek  
4004590



# StorEdge Connection Unit

Max AC Current (Smart EV Charger)	40Aac
Max Continuous Output Power (Smart EV Charger)	9600W

Ambient Temperature: -40°C ..60°C

Enclosure Rating: IP65/ Type 4X

For more details refer to the installation guide

Patent marketing notice: see [WWW.SOLAREEDGE.COM/patent](http://WWW.SOLAREEDGE.COM/patent)

Use 90° C copper PV wires only.

Revenue Grade ANSI C12.20

PHOTOVOLTAIC RAPID SHUTDOWN SYSTEM

DCD-1PH-US-P3H-F-I

PN:

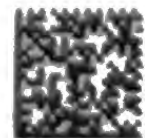
SV1223-19191CA60-4C

SN:

Made in Vietnam



Intertek  
4004590



**WARNING**  
 DUAL POWER SUPPLY  
 SOURCES: UTILITY GRID  
 AND PV SOLAR  
 ELECTRIC SYSTEM

**WARNING**  
 POWER SOURCE  
 OUTPUT CONNECTION  
 DO NOT RELOCATE THIS  
 OVERCURRENT DEVICE

**CAUTION:**  
 MULTIPLE SOURCES OF POWER  
 THE PV DISCONNECT IS LOCATED  
 BESIDE THE SERVICE METER

**WINTERIZED**  
 ACONDICIONADO PARA EL INVIERNO  
 1614



**ATTENTION AGENTS, CONTRACTORS, INSPECTORS**  
 Please note that this property has been winterized. No utilities should be turned on without a walk-through inspection of the property...  
**BE SURE TO CHECK ON THE FOLLOWING:**  
 ✓ Utilities on and functioning properly?  
 ✓ Sump pump plugged in and operable?  
 ✓ Breakers off (except breaker for sump pump, if applicable)?  
 ✓ Faucets/spigots off, including exterior spigots?  
 If you have any questions, please call Safeguard Properties, Inc. at 800-852-8308. Thank you.

**Atencion, los Agentes, los Contratistas, los Inspectores**  
 Por favor nota que esta propiedad ha sido acondicionada para el invierno. Ningunas utilidades deben ser prendidas sin una inspeccion de camino a traves de la propiedad para asegurarse de que todo funciona correctamente...  
**ESTE SEGURO VERIFICAR EN LO SIGUIENTE:**  
 ✓ Las Utilidades puestas y funcionando apropiadamente?  
 ✓ La bomba del Surtidero conectada y funcionando apropiadamente?  
 ✓ Los Cachones P lejanos (menos cachón para la bomba de surtidor, si aplicable)?  
 ✓ Las llaves lejos, inclusive llaves exteriores?  
 ✓ Cocina y el horno apagaron?  
 ✓ Fuego apagado?  
 Si tiene cualquier pregunta, por favor llame Safeguard Properties, Inc. al 800-852-8308. Gracias.

BREAKER IS BACKFEED  
DO NOT RELOCATE

29  
27  
25  
23  
21  
19  
17

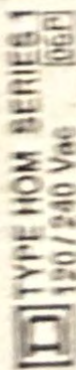
SOLAR

light  
K  
P  
S

30  
28  
26  
24  
22  
20  
18

light  
K  
P  
S  
P  
S  
S  
S





TYPE HOM SERIES I

120/240 Vac [66P]

60/75 °C WIRE

1, #8 -#14 AWG Al/Cu  
or 2, #10 -#14 AWG Cu  
TORQUE 36 LB-IN

INTERRUPTING RATING  
10,000A MAX. RMS BYM.



LISTED HACR  
CIRCUIT BREAKER

TYPE  
1-POLE UNIT RWD

ISSUE NO. VS-92A

15

ON



35

CIRCUIT  
NOMINAL  
COMMON  
TRIP

ON



35



TYPE HOM

TIPO

10 kA

120/240 V-



LISTED  
C.I.D.

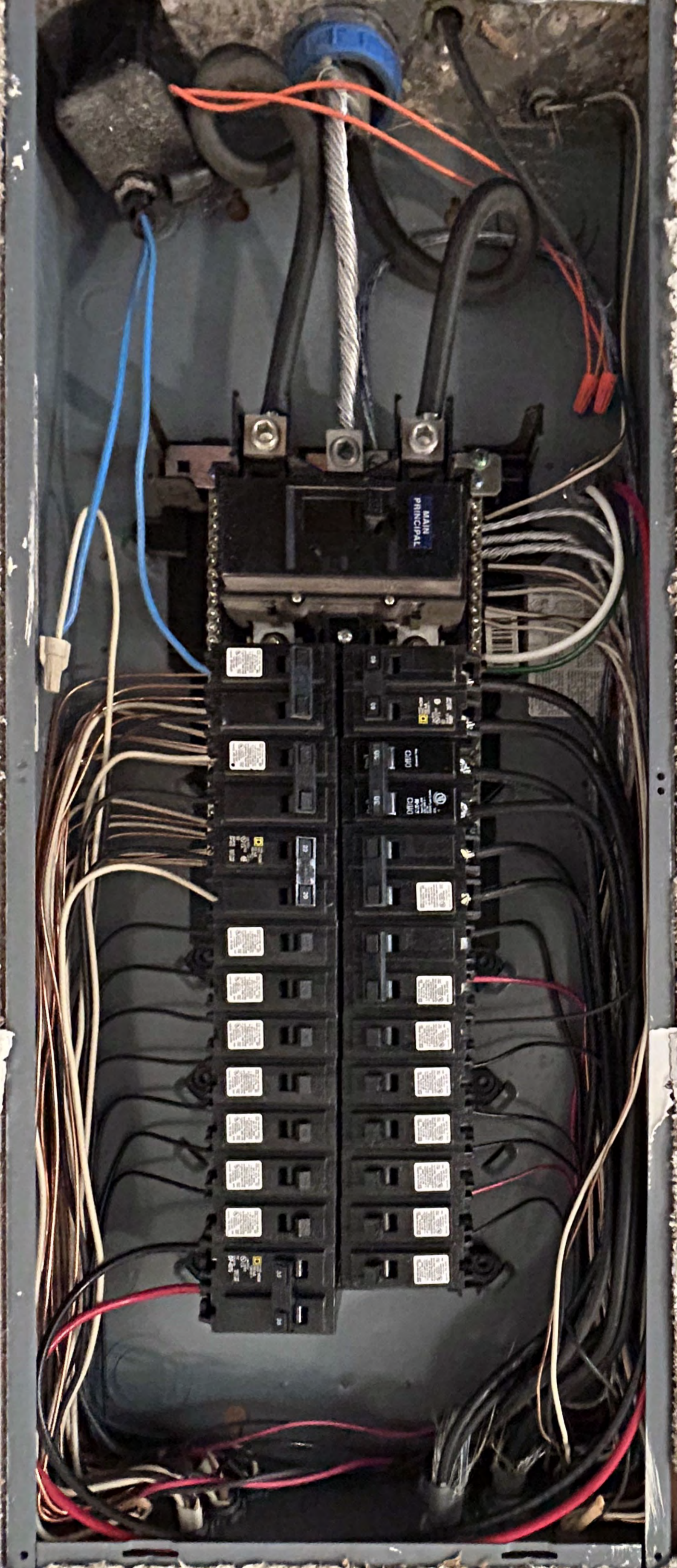
A/Cu

HACR TYPE  
TIPO CARR

ISSUE NO.  
DP-4075

OFF

OFF



10N  
 35  
 COMMON TRIP  
 35  
 TYPE HOM  
 TPO 10 KA  
 120/240 V-  
 ALIC  
 LISTED  
 C.B.  
 HACR TYPE  
 TPO/CARR  
 DP-4075  
 ISSUE NO.

15  
 TYPE HOM SERIES 1  
 120/240 Vac  
 60/75 °C WIRE  
 1, #6-#14 AWG Al/Cu  
 or 2, #10-#14 AWG Cu  
 TORQUE 36 LB-IN  
 INTERRUPTING RATING  
 10,000A MAX. RMS SYM.  
 LISTED HACR  
 CIRCUIT TYPE  
 BREAKER  
 1-POLE UNIT SWD  
 ISSUE NO. VS-926

20  
 TYPE HOM SERIES 1  
 120/240 Vac  
 60/75 °C WIRE  
 1, #6-#14 AWG Al/Cu  
 or 2, #10-#14 AWG Cu  
 TORQUE 36 LB-IN  
 INTERRUPTING RATING  
 10,000A MAX. RMS SYM.  
 LISTED HACR  
 CIRCUIT TYPE  
 BREAKER  
 1-POLE UNIT SWD  
 ISSUE NO. VS-926

20  
 TYPE HOM SERIES 1  
 120/240 Vac  
 60/75 °C WIRE  
 1, #6-#14 AWG Al/Cu  
 or 2, #10-#14 AWG Cu  
 TORQUE 36 LB-IN  
 INTERRUPTING RATING  
 10,000A MAX. RMS SYM.  
 LISTED HACR  
 CIRCUIT TYPE  
 BREAKER  
 1-POLE UNIT SWD  
 ISSUE NO. VS-926



ONE SINGLE  
 POLE ONE PLUG  
 ONE SPACE  
 ONE TWO POLE  
 REQUIRES TWO PLUG OR  
 SPACES

A SQUARE D UL LISTED SECONDARY SURGE  
 ARRESTOR MAY PLUG ON TWO ADJACENT  
 SPACES. ORDER CATALOG NUMBER  
 1406217504  
 THIS DEVICE MAY BE USED WITH SQUARE D  
 SURGE LAG REF/CAT. NO. 140612125  
 WHEN PROTECTED BY A MAIN BREAKER.  
 IF REQUIRED USE EQUIPMENT GROUNDING  
 BAR KIT CAT. NO. 140612125 OR  
 GEAR TO EXCEED GROUND ORDER KIT  
 CATALOG NO. 140612125

PHYSICAL SIZE: WHEN MAIN  
 BUS IS 1/2" OR SMALLER

# 6 AWG MAX  
CU. IN



CONDUIT BOBBY



# EATON®


General Duty Safety Switch  
Interrupteur de sécurité à usage général  
Interruptor de seguridad de servicio general

60 A, 240 V~, 60 Hz

Complete ratings inside  
Valeurs nominales complètes à l'intérieur  
Información completa de capacidades en el interior

Further instructions inside  
Autres instructions à l'intérieur  
Instrucciones adicionales en el interior

Made in U.S.A. / Fabriqué aux É.-U. / Hecho en E.U.A.



**⚠ DANGER**  
**HAZARDOUS VOLTAGE. WILL CAUSE SEVERE INJURY OR DEATH.**  
• Never operate switch with cover open.  
• Turn OFF power ahead of switch before doing any work inside. Replace all parts. Close cover before turning power ON.

**TENSION DANGEREUSE. PEUT CAUSER DES BLESSURES GRAVES OU LA MORT.**  
• Ne jamais manœuvrer l'interrupteur lorsque le couvercle est ouvert.  
• Couper l'alimentation en amont de l'interrupteur avant toute intervention. Remplacer les pièces. Fermer le couvercle avant de remettre sous tension.

**⚠ PELIGRO**  
**VOLTAJE PELIGROSO. PUEDE CAUSAR HERIDAS SEVERAS O LA MUERTE.**  
• Nunca opere el interruptor con la cubierta abierta.  
• Desconectar la alimentación del interruptor antes de trabajar dentro del mismo. Reemplazar todas las partes. Cerrar la cubierta antes de energizar el interruptor.

30-43080



**AC DISCONNECT**

---

**PHOTOVOLTAIC SYSTEM  
POWER SOURCE**

---

RATED AC OUTPUT CURRENT **25** AMPS

NOMINAL OPERATING AC VOLTAGE **240** VOLTS

pvlabs.com 03-306

**⚠ WARNING**

**ELECTRIC SHOCK HAZARD**

TERMINALS ON THE LINE AND LOAD SIDES MAY BE ENERGIZED IN THE OPEN POSITION

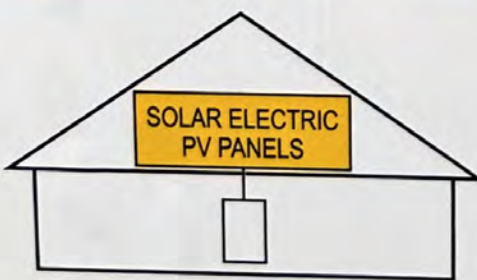
pvlabs.com 05-215

**CAUTION:**

MULTIPLE SOURCES OF POWER  
THE SERVICE DISCONNECT IS LOCATED  
INSIDE OPPOSITE THE UTILITY METER

pvlabs.com 3-42

**SOLAR PV SYSTEM  
EQUIPPED WITH  
RAPID SHUTDOWN**



TURN RAPID SHUTDOWN SWITCH TO THE "OFF" POSITION TO SHUT DOWN PV SYSTEM AND REDUCE SHOCK HAZARD IN THE ARRAY

pvlabs.com 06-112

**RAPID SHUTDOWN  
SWITCH FOR  
SOLAR PV SYSTEM**

pvlabs.com 02-310

ON

OFF

