



REC

REC Alpha Power Series
 REC-A20AA Pure P
 Serial Number: 100-1000000100

Power Output (Pmax) 500 W
 Weight Class Sorting 1-10 W
 Power Production (Pmp) 1-20 W
 Rated Voltage (Vmp) 50.5 V
 Rated Current (Imp) 9.40 A
 Open Circuit Voltage (Voc) 58.2 V
 Short Circuit Current (Isc) 10.0 A
 Maximum System Voltage (Vmax) 25 A
 Maximum Series Fuse (DC) (MSF) 25 A
 Design Load 2000 PA
 Maximum Test Load 4000 PA

The manufacturer warrants the product for 12 months or 1000 hours of use, whichever comes first. This warranty does not cover damage caused by misuse, neglect, or unauthorized modifications.



Warning: electrical hazard. The module contains components which are subject to high voltages. **CAUTION: DO NOT DISCONNECT UNDER LOAD.**



Attention: Please do not disconnect the module under load.



Attention: REC PA3 DECONNECTED SOLIS THROUGH

For more information, visit our website at www.rec.com
 Made in Singapore by REC SOLAR PTE. LTD.
 20 Tuas South Avenue 14, Singapore 637072.
 Customer Care: REC Solar 6882 0000
 Fax: 6754 8541. Email: sales@rec.com
 For more details, visit www.rec.com



UL
 LISTED
 1000 W
 50 VDC
 1000 VDC



1000 W
 50 VDC
 1000 VDC

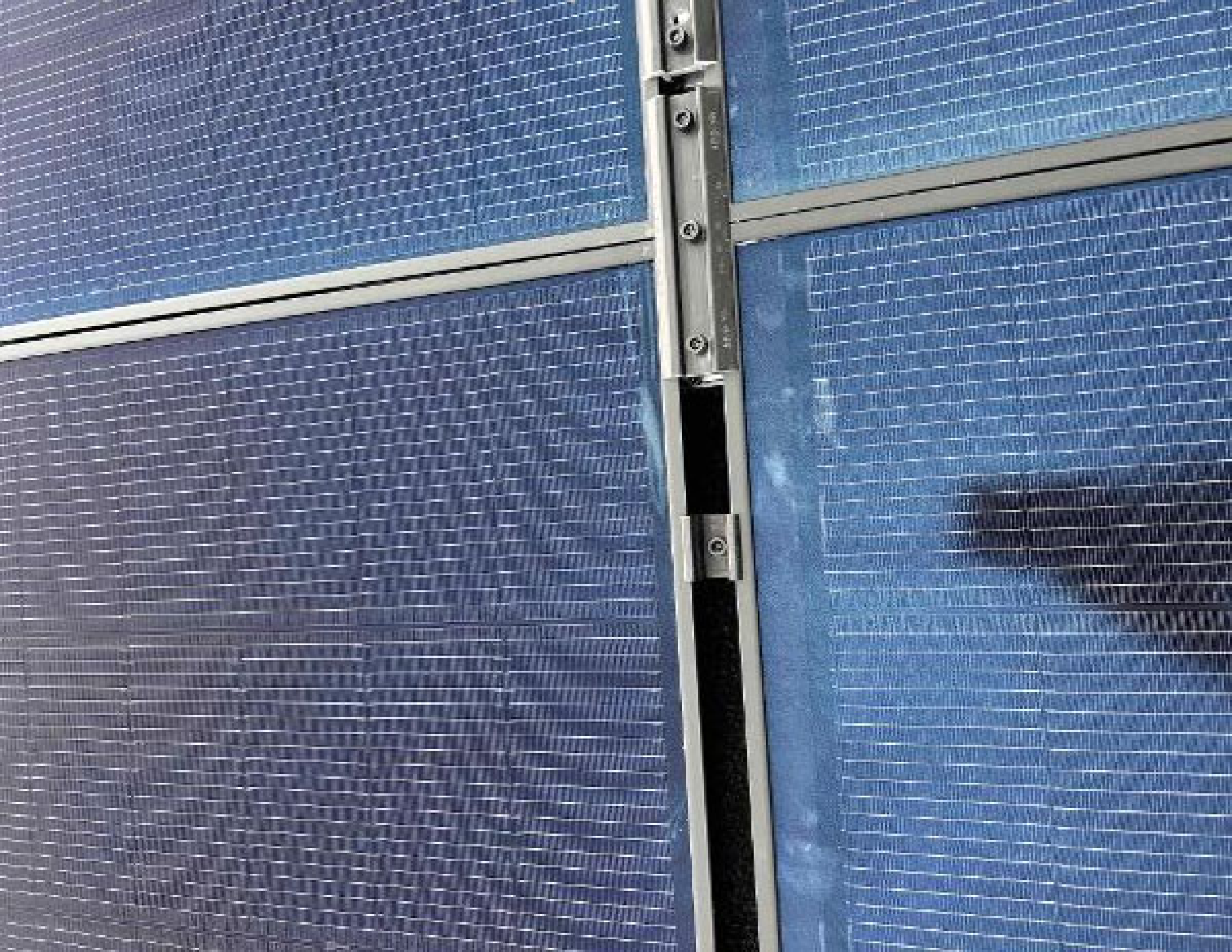
500 W
 50 VDC

Manufacturer: 100-1000

























REC

WARNING
DO NOT TOUCH
ELECTRICAL
COMPONENTS





12AWG 3/C
12AWG 3/C

840-00368-14
250VAC 20A
+79°C 2042



167





Private
Residence

100

100



IQ Combiner 4

Photovoltaic

Combiner Box

X2-IQ-AM1-240-4

IEEE1547:2018 COMPLIANT



Electrical ratings

Voltage: 240VAC, 60Hz
 DG Breakers: 30A MAX (combined)
 DG Inputs: 64A MAX (combined)
 Output: 65A MAX, 90A MAX feeder OCPD
 Temperature: 46°C MAX ambient
 For DG breaker, use only Eaton BR series.

202319113722

202319113722

S/N:

P/N:
 883-00353 15

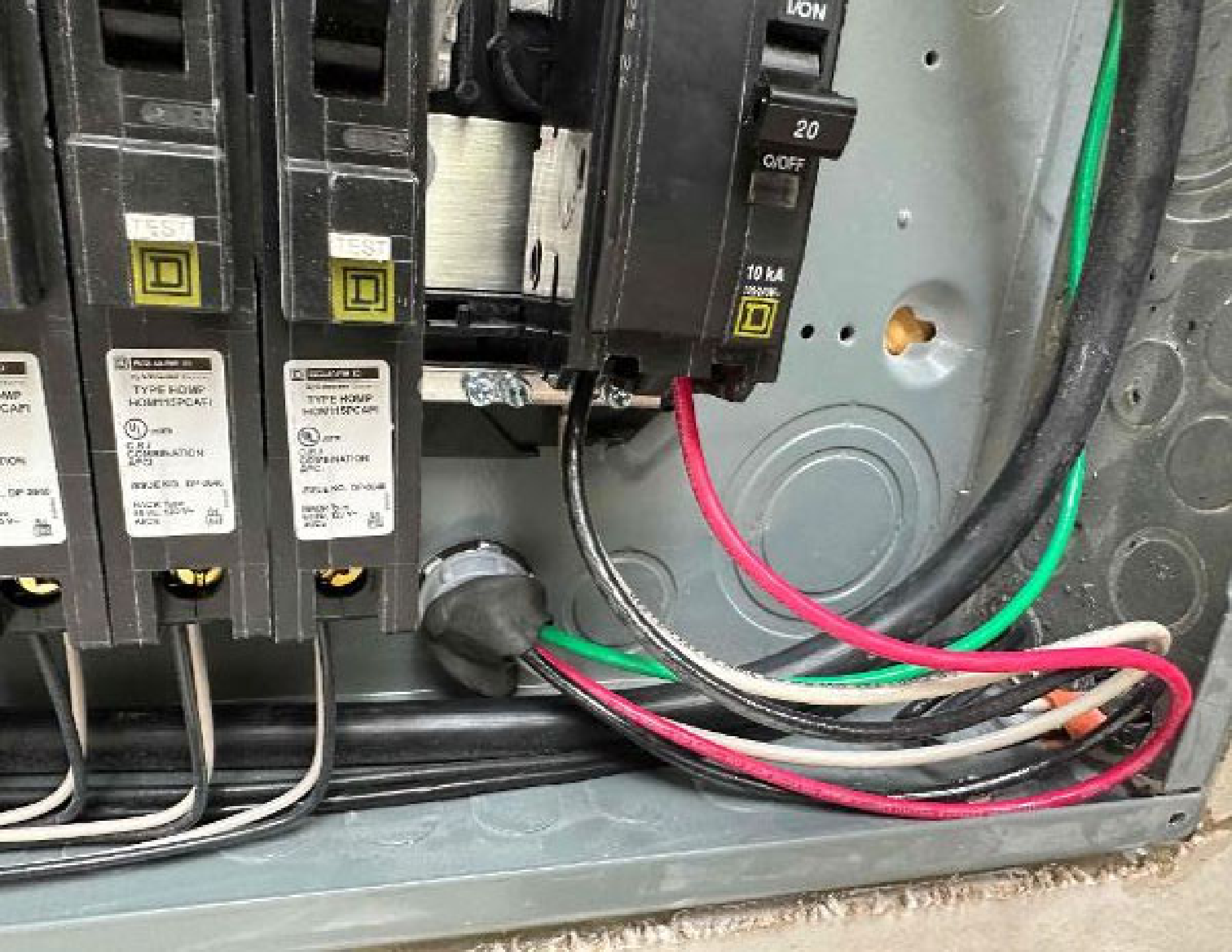
Dedicated solar and DG Combiner Box - do not add loads
 10 AMP or 15 AMP IQ Gateway Breaker not used for backfeed

Connection	Wire sizes	Torque	
DG Breaker {1, 2, 3, 4}	14-10 AWG	2.2 Nm (20 lb-in)	
	8 AWG	2.8 Nm (25 lb-in)	
	6-4 AWG	3.0 Nm (27 lb-in)	
60A Circuit Breaker only	4-1/0 AWG	5.0 Nm (45 lb-in)	
	14-10 AWG	2.26 Nm (20 lb-in)	
IQ Gateway Breaker	Large screw	2-1/0 AWG	5.6 Nm (45 lb-in)
		14-3 AWG	5.1 Nm (45 lb-in)
Neutral and ground	Small screw	6 AWG	3.6 Nm (32 lb-in)
		8 AWG	2.6 Nm (23 lb-in)
		10-14 AWG	2.3 Nm (20 lb-in)
Main lug		10-4 AWG	5.0 Nm (45 lb-in)
		3-2/0 AWG	5.6 Nm (50 lb-in)

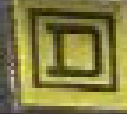
Copper conductors only, rated min. 75°C.
 Follow NFPA 70 (NEC), or CSA C22.1 part 1, and all local codes.

For DG Breakers larger than 20A, use wire insulated for 90°C based on 75°C ampacities.

Designed in California and New Zealand



TEST



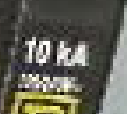
TEST



ON

OFF

10 kA
1000V



TYPE HOMR
HOMR15PC4FI

UL LISTED
CIRCUIT
COMBINATION
TYPE

REVERSE THRU-ROTOR

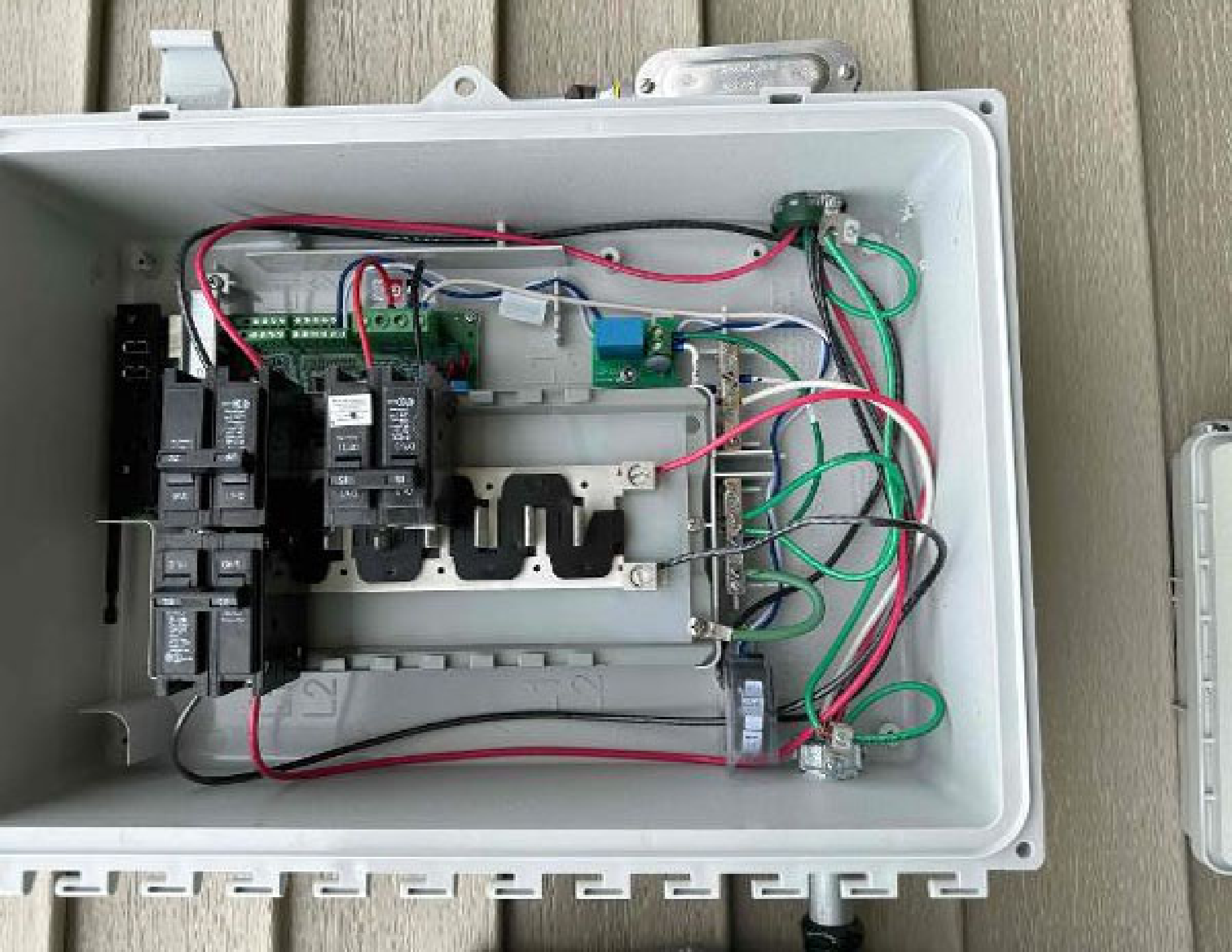
15 AMP 125V
15 AMP

TYPE HOMR
HOMR15PC4FI

UL LISTED
CIRCUIT
COMBINATION
TYPE

REVERSE THRU-ROTOR

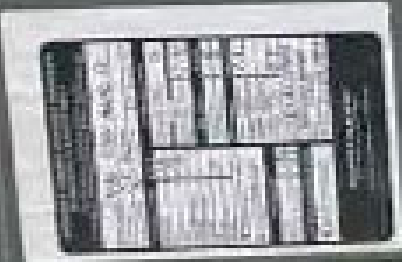
15 AMP 125V
15 AMP











⚠ WARNING

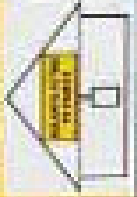
ELECTRIC SHOCK HAZARD
TERMINALS ON THE LINE AND
LOADS SHOULD BE ENERGIZED
IN THE OPEN POSITION

PHOTOVOLTAIC SYSTEM
⚠ AC DISCONNECT ⚠

NAME PLATE CURRENT: 15.0 A
SERIAL NUMBER: 4678362 21801 V

**SOLAR PV SYSTEM EQUIPPED
WITH RAPID SHUTDOWN**

THIS RATED SHUTDOWN
SWITCH IS TO BE
"OFF" POSITION TO
SHUT DOWN PV SYSTEM
AND PREVENT
SHOCK HAZARD
IN THE AREA



⚠ WARNING

DUAL POWER SUPPLY
SOURCE: UTILITY GRID AND
PV SOLAR ELECTRIC SYSTEM

⚠ WARNING

DO NOT ATTEMPT TO
REPAIR OR MAINTAIN THIS
EQUIPMENT UNLESS YOU
ARE A QUALIFIED ELECTRICIAN
OR PHOTOVOLTAIC SPECIALIST
SEE THE USER MANUAL FOR
ADDITIONAL INFORMATION

⚠ WARNING

REPLACE THE COVER FOR
DO NOT EXPOSE TO
THE ENVIRONMENT
DANGER

 **WARNING**

DUAL POWER SUPPLY

**SOURCES: UTILITY GRID AND
PV SOLAR ELECTRIC SYSTEM**





 **WARNING**

DUAL POWER SUPPLY

**SOURCES: UTILITY GRID AND
PV SOLAR ELECTRIC SYSTEM**

Shazia Mallick
486 Silver Maple Dr
Fuquoy Varina NC
27526

9/27/2023







Maxxifit



ULTIMATE
34.87
927



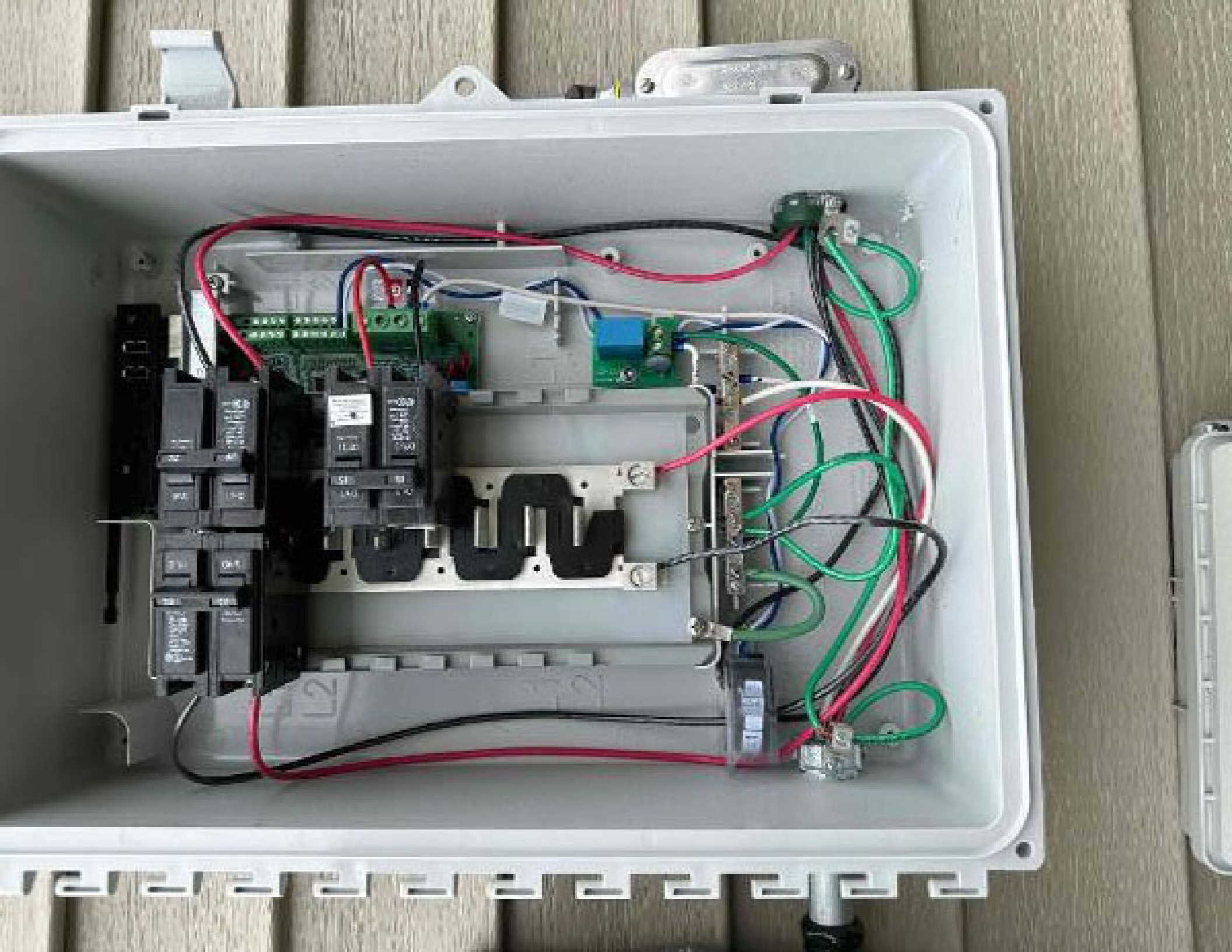
Discontinued/Crafty
Accessories

Standard 1111 by CECO-TEX®
© 2011 CECO-TEX®
Patent No. 6,211,123

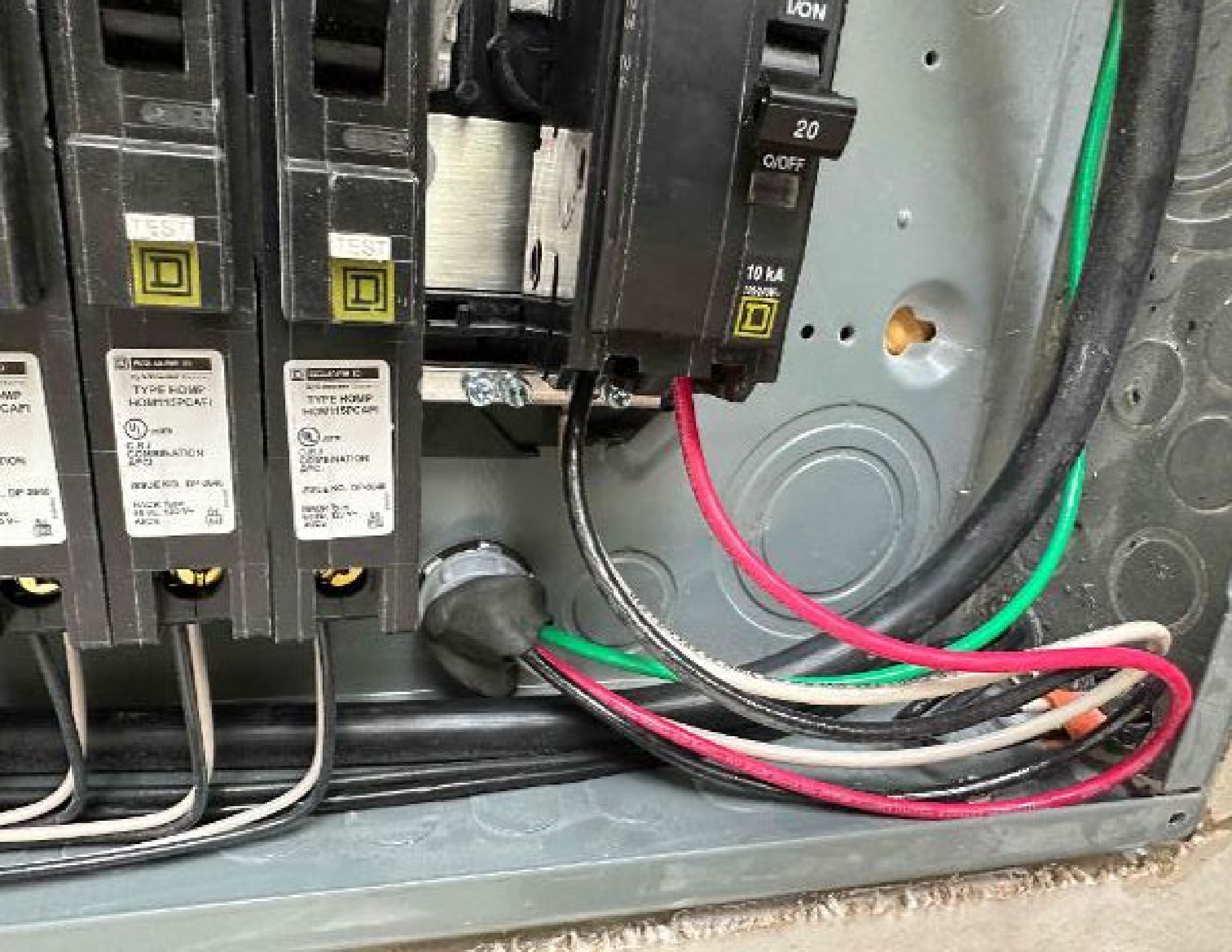
CE

1137A

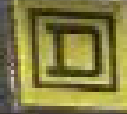








TEST



TEST



20

OFF

10 kA
1000V



TYPE HOMR
HOMR15PC4FI
COMBINATION
2FC

TYPE HOMR
HOMR15PC4FI
COMBINATION
2FC







☑️ IQ GATEWAY 1

IQ Gateway

202319113722

IQ Microinverters & Array

- ✓ Scanned : 13/13
- ✓ Detected : 13/13
- 🚫 Communicating : 0/13
- ✓ Array created : 1
- ✓ Producing power : 13/13
- ☹️ Profile set : 0/13 (IEEE 1547 default 2015-10.11)

(Please wait for grid profiles to propagate to all microinverters.)

Add site notes and pictures

Update IQ Gateway Software

IQ Gateway 202319113772



IQ Gateway successfully connected to Enphase Cloud and Installer Toolkit



IQ Gateway must be connected to the Enphase Cloud via both Cellular modem and Wi-Fi Ethernet for Enphase Energy System commissioning.

IQ Gateway Connectivity Status

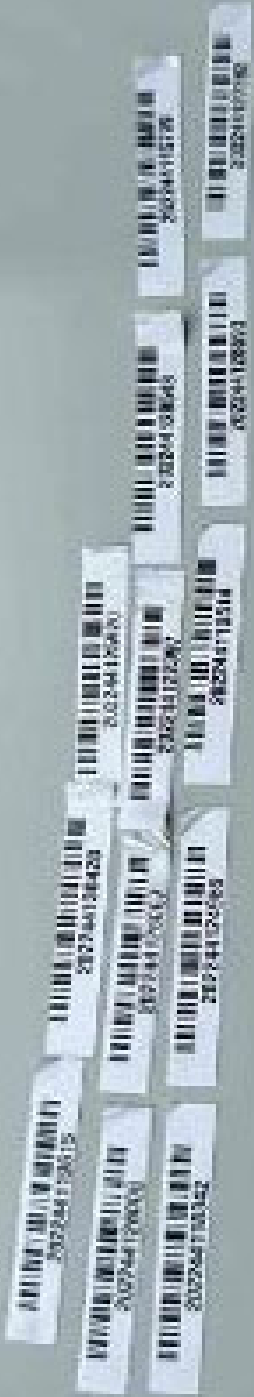


Wi-Fi



Ethernet



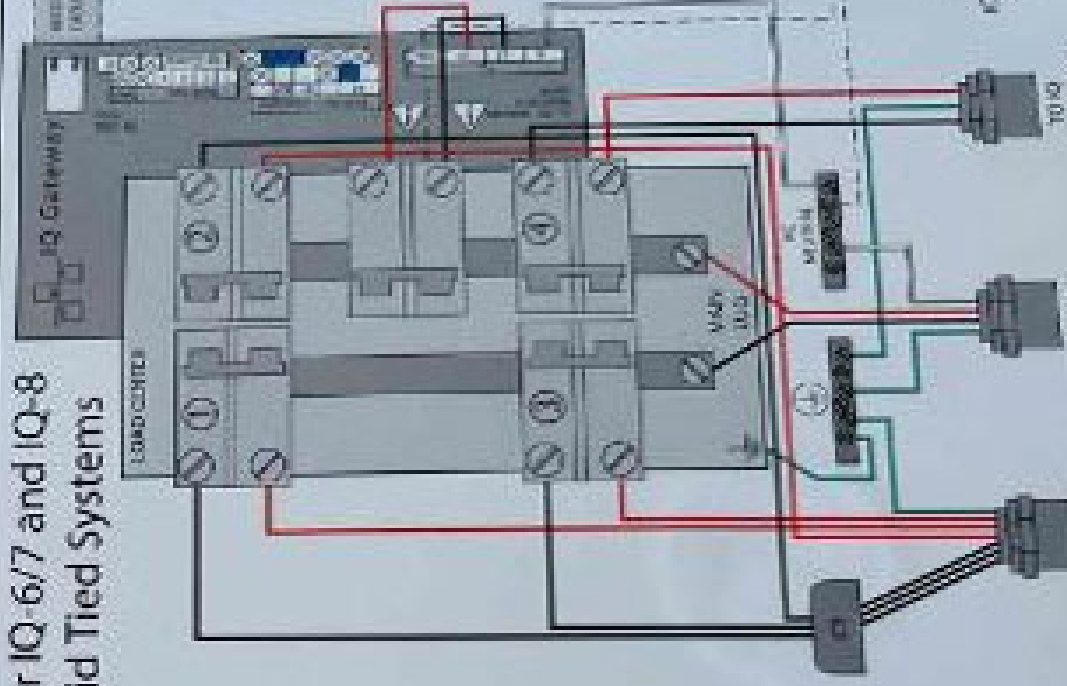


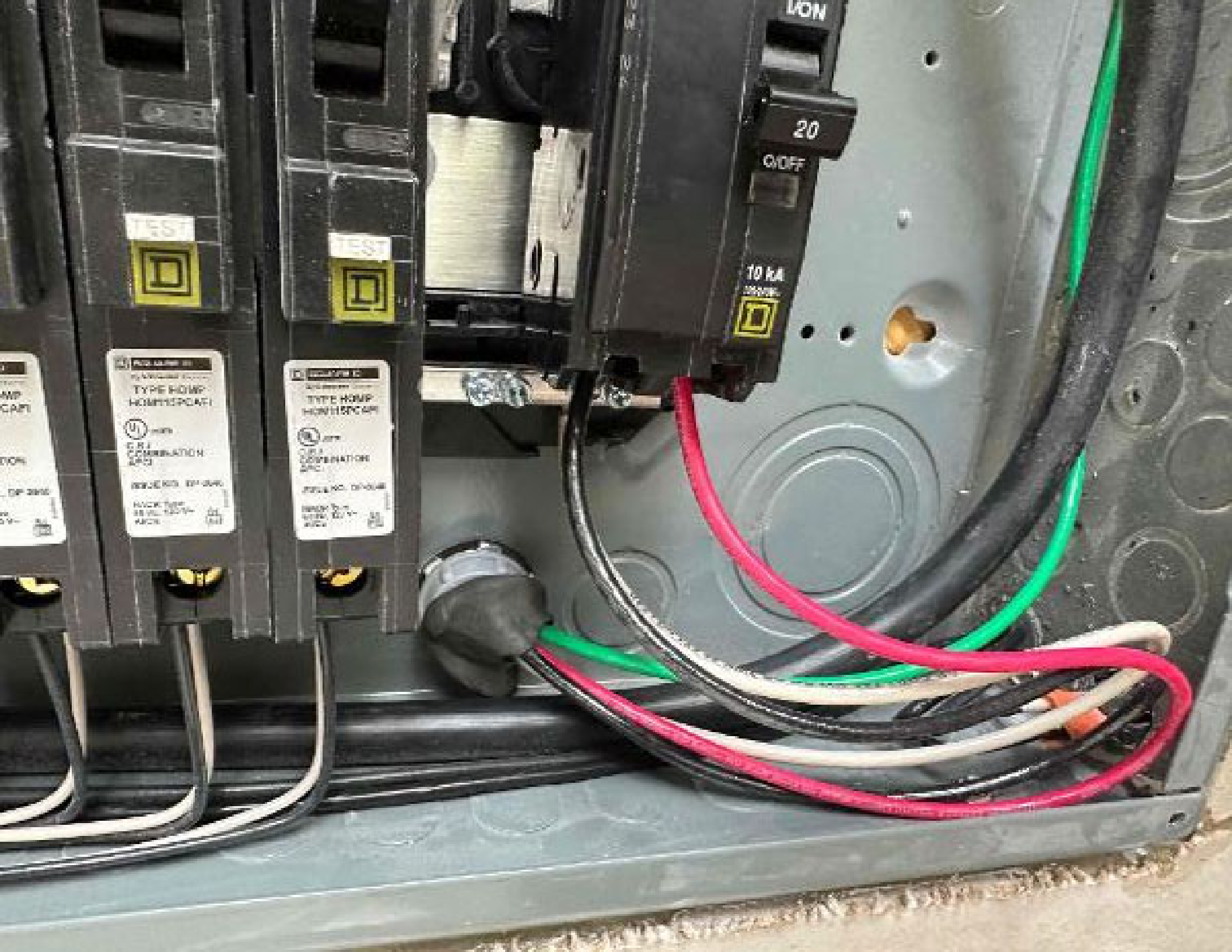
Combiner LED & buttons quick reference guide



- LED**
 - Green - All LEDs are on (power on)
 - Red - One or more LEDs are off (power off)
 - Yellow - One or more LEDs are flashing (power off)
 - Blue - One or more LEDs are flashing (power off)
- AP mode LED**
 - Green - AP mode is on (power on)
 - Red - AP mode is off (power off)
 - Yellow - AP mode is flashing (power off)
 - Blue - AP mode is flashing (power off)
- AP mode button**
 - Green - AP mode is on (power on)
 - Red - AP mode is off (power off)
 - Yellow - AP mode is flashing (power off)
 - Blue - AP mode is flashing (power off)
- Power protection LED**
 - Green - Power protection is on (power on)
 - Red - Power protection is off (power off)
 - Yellow - Power protection is flashing (power off)
 - Blue - Power protection is flashing (power off)
- Master control LED**
 - Green - Master control is on (power on)
 - Red - Master control is off (power off)
 - Yellow - Master control is flashing (power off)
 - Blue - Master control is flashing (power off)
- Master control button**
 - Green - Master control is on (power on)
 - Red - Master control is off (power off)
 - Yellow - Master control is flashing (power off)
 - Blue - Master control is flashing (power off)

For IQ-6/7 and IQ-8 Grid Tied Systems





TEST

TEST

20

ON/OFF

10 kA

ABB
TYPE HOMR
HOMR15PC4FI
UL LISTED
CIRCUIT
COMBINATION
2PO
SERIAL NO. DP-048
MFG. DATE
12/10/11
MFG. NO.

ABB
TYPE HOMR
HOMR15PC4FI
UL LISTED
CIRCUIT
COMBINATION
2PO
SERIAL NO. DP-048
MFG. DATE
12/10/11
MFG. NO.



20

20

22327

15

TEST

15 AMPERE C

TYPE HOMMP

NON-THERMAL

15

ISSUE NO. CP-1948

MADE IN CHINA

100V-120V

15

TEST

15 AMPERE C

TYPE HOMMP

NON-THERMAL

15

ISSUE NO. CP-1948

MADE IN CHINA

100V-120V

15

TEST

15 AMPERE C

TYPE HOMMP

NON-THERMAL

15

ISSUE NO. CP-1948

MADE IN CHINA

100V-120V

25

10 A

CP-4075

100V-120V











Labels on the wooden stud, likely containing technical specifications or manufacturer information.

Labels on the wooden stud, likely containing technical specifications or manufacturer information.

Labels on the wooden stud, likely containing technical specifications or manufacturer information.

