















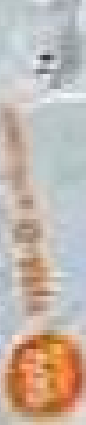




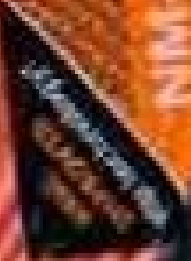
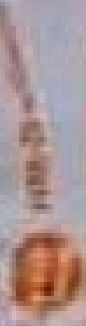




NIM-B 10/2
250 ft indoor
Copper Building Wire



NIM-B 10/2
250 ft indoor
Copper Building Wire



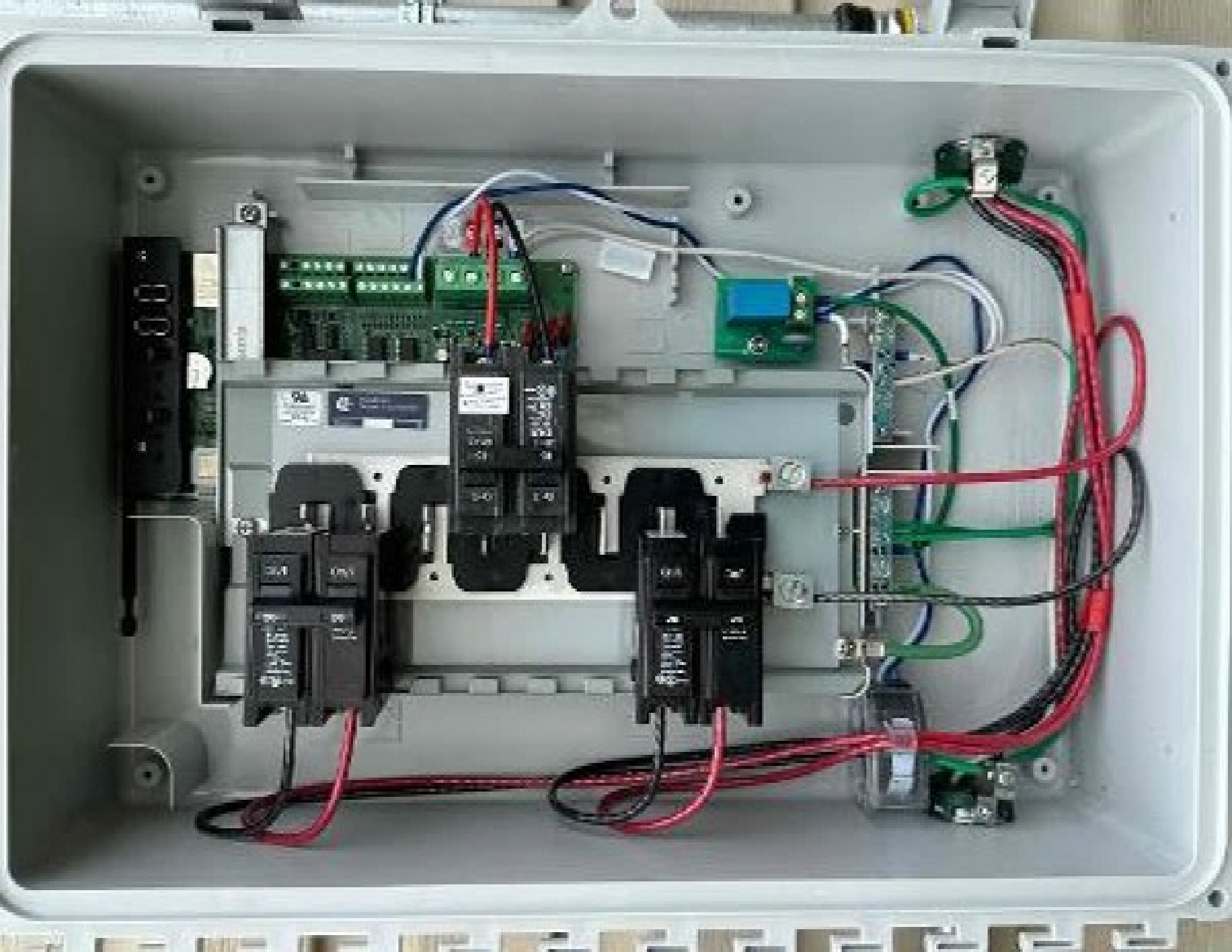
NIM-B 10/2



























 **ENPHASE.**

IQ7X

IQ7X Grid Support Interactive Inverter
For Enphase patent information, refer to
<http://enphase.com/company/patents>

Max. Input Range: 48-140V
DC Input Voltage: 25-150V
Max. Input Short-Circuit Current: 10A
Max. Input Continuous Current: 6.5A
AC Output Voltage: 240V/208V
AC Output Current: 12/11.5A
AC Output Frequency: 60Hz
AC Output Power (max. continuous): 3.15kW
Operating Temperature: -40C to +60C
Ingress Protection: IP67
Photovoltaic System Grounding: per NEC
UL 1741, IEC 62109, CSA C101.1, UL 1741, IEC 62109
UL 1741, IEC 62109, CSA C101.1, UL 1741, IEC 62109

This device complies with parts of the FCC
Rules. Operation is subject to the following two
conditions: (1) This device may not cause
harmful interference. (2) This device must
accept any interference received, including
interference that may cause undesired operation.



CAUTION: RISK OF SHOCK HAZARD WITH AC LINE
REMOVED. NO USER SERVICEABLE PARTS INSIDE. REFER
SERVICING TO QUALIFIED SERVICE PERSONNEL.

WARNING: BEFORE WORKING ON
OR CONTACTING THIS PHOTOVOLTAIC SYSTEM
UNGROUNDING AND/OR DE-ENERGIZING AC POWER
VOLTAGE SOURCE IS REQUIRED. ALWAYS EQUIPMENT
DISCONNECT BOTH AC AND DC. PHOTOVOLTAIC
NORMAL SUPPLIES AC POWER TO THE EQUIPMENT
WHEN EXPOSED TO LIGHT. HOT SURFACES TO REDUCE
THE RISK OF BURNING - DO NOT TOUCH.

ATTENTION: POUR TRAVAILLER
LES CONDUCTEURS DE LA LIGNE PHOTOVOLTAÏQUE
RE DÉBRANCHER ET DÉ-ÉNERGÉR LA SOURCE D'ALIMENTATION
TENSION DE LA SOURCE PHOTOVOLTAÏQUE. LA
TENSION DE LA SOURCE PHOTOVOLTAÏQUE
PRODUIT UN COURANT ALTERNATIF QUAND EXPOSÉ À LA
LUMIÈRE. DES SURFACES CHAUDES PEUVENT
PROVOQUER DES BLESSURES PAR CHOC ÉLECTRIQUE
OU PAR BRÛLURE. NE PAS TOUCHER.





EU-Europe Contact REC Solar GmbH
 Bismarck 71a, 81561 Munich, Germany, Tel: +49 (0)89 447-0050
 For other regions see: www.recgroup.com/contact

Made in Singapore by REC SOLAR PTE LTD
 30 Tuas South Avenue 14, Singapore 637012, SINGAPORE

Warning electrical hazard: This module produces electricity when exposed to light.
 CAUTION: DO NOT DISCONNECT UNDER LOAD
 Avertissement: Risque de choc électrique. Ce module solaire produit de l'électricité lorsque
 est exposé à la lumière.
 ATTENTION: NE PAS DECONNECTER SOUS TENSION
 For field connections, use with a certified design DC PV wires, intended for a max. of 30°C



—) Indication for connection to inverter & operating voltage and power
 —) Indication for connection to inverter & operating voltage and power

Produced in: 09.05.2023

CE
 UK
 CP



REC SOLAR



REC SOLAR
 REC SOLAR PTE LTD
 30 TUAS SOUTH AVENUE 14
 SINGAPORE 637012

Serial Number: FBB-7005080952



REC Alpha Pure-R Series
 REC200A Pure-R

Power Output (Pmax) 400 W
 Watt Class Sorting 0/+10 W
 Power Production Tolerance +/- 3%
 Rated Voltage (Vmpp) 50.0 V
 Rated Current (Impp) 8.00 A
 Open Circuit Voltage (Voc) (+/- 3%) 59.4 V
 Short Circuit Current (Isc) (+/- 3%) 8.89 A
 Maximum System Voltage (Vsys) 1000 V
 Maximum Series Fuse (DCI IUL) 25 A
 Maximum Series Fuse (DCI IIECI) 25 A
 Design Load +4265 / -2065 Pa*
 Maximum Test Load +7000 / -4000 Pa*
 (Values at STC, 1000 W/m², 1.5, 25°C)











062

UL
CERTIFIED
UL 1004-1000
E488030

840-00388-17
250VAC 20A
+79°C 2303

063

UL
CERTIFIED
UL 1004-1000
E488030

840-00388-17
250VAC 20A
+79°C 2303

064

067











WARNING

ELECTRIC SHOCK HAZARD

TERMINALS ON THE LINE AND
LOAD SIDES MAY BE ENERGIZED
IN THE OPEN POSITION



WARNING
BATTERY
RECHARGE

ENVIRO-ADAPTIVE TECHNOLOGY™

System 101



WARNING
WIRE TO GATEWAY 11 AND 12 TO
IS SYSTEM CONTROLLER 2 FOR
GOOD FOR WIND SYSTEMS
- INSTRUCTIONS IN OIG

System 2



⚠ WARNING

THIS EQUIPMENT FED BY MULTIPLE SOURCES. TOTAL RATING OF ALL OVERCURRENT DEVICES, EXCLUDING MAIN SUPPLY OVERCURRENT DEVICE, SHALL NOT EXCEED CAPACITY OF BUSBAR.

⚠ WARNING

ELECTRIC SHOCK HAZARD

TERMINALS ON THE LINE AND LOAD SIDES MAY BE ENERGIZED IN THE OPEN POSITION

⚠ WARNING

**PHOTOVOLTAIC SYSTEM
COMBINER PANEL**

DO NOT ADD LOADS

**PHOTOVOLTAIC SYSTEM
⚠ AC DISCONNECT ⚠**

RATED AC OUTPUT CURRENT 18.0 A

NOMINAL OPERATING AC VOLTAGE 240 V

⚠ WARNING

ALL AC INPUTS MUST BE PROTECTED BY FUSES OR CIRCUIT BREAKERS. THE RATED AC OUTPUT CURRENT IS 18.0 A. THE RATED AC VOLTAGE IS 240 V. THE RATED AC OUTPUT CURRENT IS 18.0 A. THE RATED AC VOLTAGE IS 240 V. THE RATED AC OUTPUT CURRENT IS 18.0 A. THE RATED AC VOLTAGE IS 240 V.



 **WARNING**

DUAL POWER SUPPLY

**SOURCES: UTILITY GRID AND
PV SOLAR ELECTRIC SYSTEM**

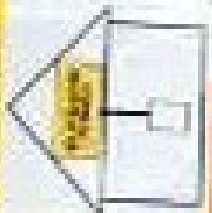


PULSE

PA SOLAR BLENDES
DO NOT RELOCATE
THIS OVERCOURTAIN
DEVICE

16	17	18	19	20	21	22	23	24	25	26	27	28	29	30	31	32	33	34	35	36	37	38	39	40	41	42	43	44	45	46	47	48	49	50	51	52	53	54	55	56	57	58	59	60	61	62	63	64	65	66	67	68	69	70	71	72	73	74	75	76	77	78	79	80	81	82	83	84	85	86	87	88	89	90	91	92	93	94	95	96	97	98	99	100
----	----	----	----	----	----	----	----	----	----	----	----	----	----	----	----	----	----	----	----	----	----	----	----	----	----	----	----	----	----	----	----	----	----	----	----	----	----	----	----	----	----	----	----	----	----	----	----	----	----	----	----	----	----	----	----	----	----	----	----	----	----	----	----	----	----	----	----	----	----	----	----	----	----	----	----	----	----	----	----	----	----	----	----	-----

SOLAR PV SYSTEM EQUIPPED WITH RAPID SHUTDOWN



TURN PAPER SHUTDOWN SWITCH TO THE "OFF" POSITION TO SHUT DOWN PV SYSTEM AND REDUCE SHOCK HAZARD IN THE ARRAY.

WARNING

ELECTRIC SHOCK HAZARD
TERMINALS ON THE LMC AND LEAD WIRING MAY BE ENERGIZED BY THE OPEN POSITION.

WARNING

DUAL POWER SUPPLY
SOURCE: UTILITY GRID AND PHOTOVOLTAIC SYSTEM

PHOTOVOLTAIC SYSTEM AC DISCONNECT

MTS-6000 (model 6000) has a locking pressure switch.

WARNING

Do not touch the terminals or wiring when the system is energized.

WARNING

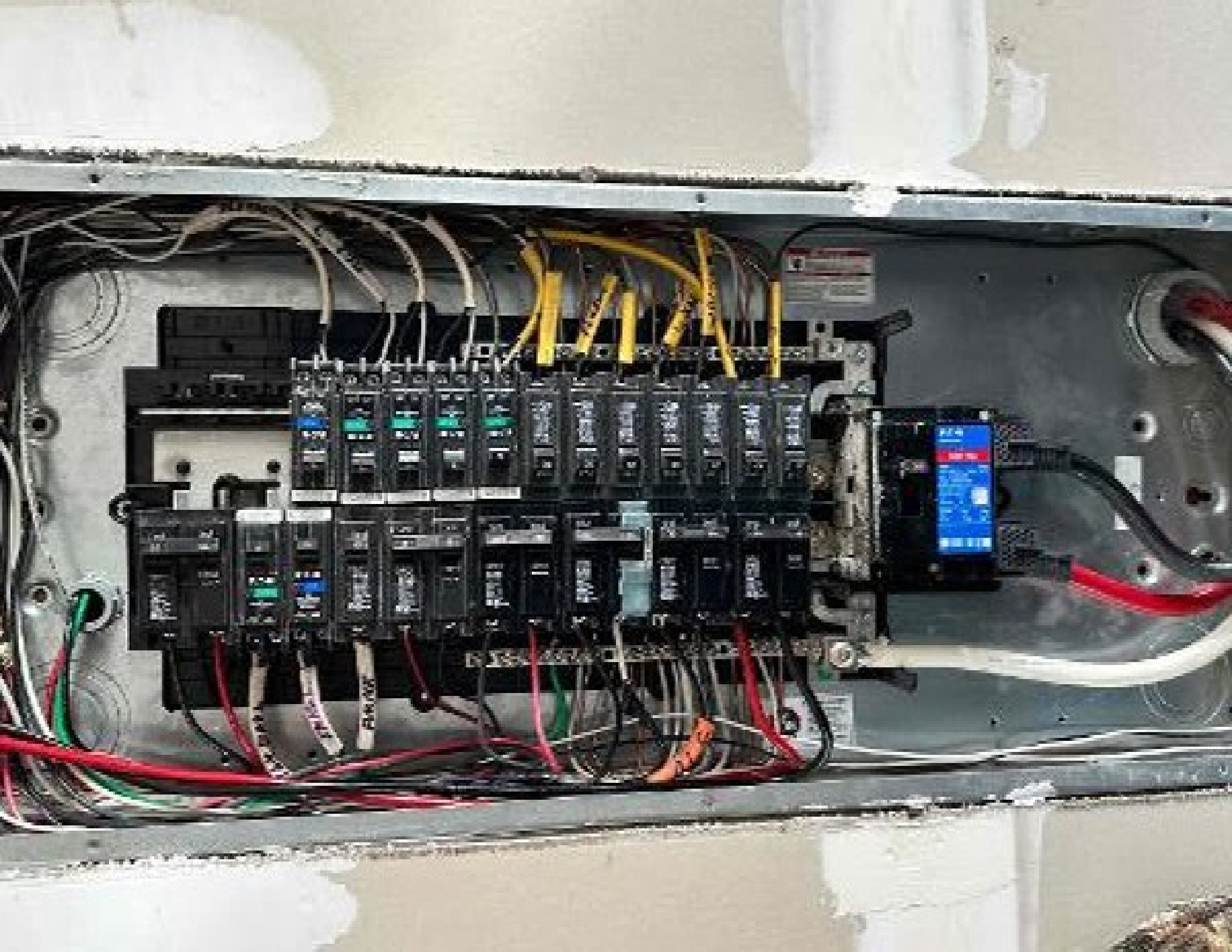
Do not touch the terminals or wiring when the system is energized.







1000000
1000000



IQ COMBINER 4

Photovoltaic

Combiner Box

X2-IQ-AM1-240-4

IEEE1547-2018 COMPLIANT



Electrical ratings

Voltage 240VAC, 50Hz

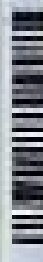
DC Breakers 80A MAX (combined)

DC Inputs 64A MAX (combined)

Output 63A MAX, 30A MAX feeder (CCFD)

Temperature 40°C MAX ambient

For DC breaker, use only Eaton BR series.



202319111922

P/N:



202319111922



883-00353 15

Dedicated solar and DG Combiner Box - do not add loads

(100A or 14.5MP IQ Gateway Breaker with, see for backdoor)

Connection	Wire sizes	Torque
DC Breaker (1, 2, 3, 4)	14-10 AWG	2.2 Nm (20 lb-in)
	8 AWG	7.8 Nm (70 lb-in)
	6-4 AWG	5.0 Nm (45 lb-in)
60A Circuit Breaker only	4-10 AWG	5.0 Nm (45 lb-in)
IQ Gateway Breaker	14-10 AWG	2.28 Nm (20 lb-in)
	2-10 AWG	5.5 Nm (49 lb-in)
Neutral and ground	14-8 AWG	5.1 Nm (45 lb-in)
	6-2 AWG	9.8 Nm (87 lb-in)
Main lug	8 AWG	2.6 Nm (23 lb-in)
	10-10 AWG	2.2 Nm (20 lb-in)
	10-8 AWG	5.0 Nm (45 lb-in)
	8-2 AWG	9.8 Nm (87 lb-in)

Copper conductors only, rated min. 75°C

For more info, see NEC, or IEC 60364 part 1, and all local codes.

The DC Breakers larger than 20A, use wire insulated for 90°C based on 75°C conductor.

Designed in California and New Zealand
Made in Mexico

