

| | | | |
|---|---|--|--|
|  REC Alpha Pure R Series REC420AA Pure R Serial Number: FBB-7005080154 Phone: +65 6469 0229 www.recgroup.com |  UL 508, ENEC CE Marking: REC 01232019 UK CA | Manufactured: 04.05.2023 The condition required to achieve a specified output is as follows: Input: 1000 W, Input (1.5 bar) 25°C | Power Output (Pmax) 420 W |
| | | | Watt Class Sorting Power Production Tolerance +/- 3% 50.0 V Interlink REC 01232019 CE Marking: REC 01232019 UK CA |
| Power Output (Pmax) 420 W Watt Class Sorting Power Production Tolerance +/- 3% 50.0 V Interlink REC 01232019 CE Marking: REC 01232019 UK CA | Rated Voltage (Vmp) 59.4 V Rated Current (Imp) 8.40 A Open Circuit Voltage (Voc) (+/- 3%) 59.4 V Short Circuit Current (Isc) (+/- 3%) 8.89 A Maximum System Voltage (Vsys) 1000 V Maximum Series Fuse (DC) (UL) 25 A Maximum Series Fuse (DC) (IEC) 25 A Design Load +4668 / -2696 Pa Maximum Test Load +7000 / -4000 Pa | Warning electrical hazard. This module produces electricity when exposed to light. CAUTION: DO NOT DISCONNECT UNDER LOAD Avertissement: Risque de choc électrique. Ce module génère de l'électricité lorsque exposé à la lumière. ATTENTION: NE PAS DECONNECTER SOUS TENSION For data connection, use min. 8 mm (1/2 AWG) UL PV wire (allowed for a min. of 50°C) Made in Singapore by REC SOLAR PTE LTD. 20 Tuas South Avenue 14, Singapore 637312, Singapore REC Solar Energy (Singapore) Pte Ltd. 77A, 81st Street, Greenway, Tel: +65 (0)69 443 8830 For more details see: www.recgroup.com/sg |  |



FLASHKIT SFM SLIDER S 004271D
 FLASHKIT SFM SLIDER S COMP DRK
 DARK Pack Size : 10
 Factory Code: 5-1



WO/PO# 0045416-00 Manufacture date: 21/02/23-3/10/22 8 1 0039 36213 16







Device scan button
 Only used by installer during installation or to fix a fault in the system.
 For 15 Amp 15 Series please scan for fusion over the power line.

40 LEDs
 - - - - - Flashing green when software upgrade is in progress.
 - - - - - Flashing orange when IQ Gateway is booting up.

On power the LEDs will take up to 20 seconds to glow
 while installing, or 1 to 2 minutes when powering off the IQ Gateway. Before proceeding to look on.

ENPHASE.
 IQ Combiner 4
 Photovoltaic
 Combiner Box
 X2-IQ-AM1-240-4
 IEEE1547-2018 COMPLIANT

UL
 CERTIFIED
 LISTED
 E341166

Electrical ratings
 Voltage: 240VAC, 60Hz
 DG Breakers: 80A MAX (combined)
 DG Inputs: 64A MAX (combined)
 Output: 60A MAX, 80A MAX feeder OCPD
 Temperature: 40°C MAX ambient
 For DG breaker, use only below BR series.

202319111902
 P/N: 883-60353 15

Dedicated solar and DG Combiner Box - do not add loads
 10 AMP or 15 AMP IQ Gateway Breaker not used for backfeed

| Connection | Wire sizes | Torque |
|----------------------------|-------------|--|
| DG Breaker (1, 2, 3, 4) | 14-10 AWG | 2.2 Nm (20 lb-in) |
| | 8 AWG | 2.8 Nm (25 lb-in) |
| | 6-4 AWG | 3.0 Nm (27 lb-in) |
| 60A Circuit Breaker only | 4-1/0 AWG | 5.0 Nm (45 lb-in) |
| IQ Gateway Breaker | 14-10 AWG | 2.26 Nm (20 lb-in) |
| Neutral and ground | Large screw | 2-1/0 AWG: 5.6 Nm (45 lb-in) 14-3 AWG: 5.1 Nm (45 lb-in) |
| | Small screw | 6 AWG: 3.6 Nm (32 lb-in) 8 AWG: 2.6 Nm (23 lb-in) 10-14 AWG: 2.3 Nm (20 lb-in) |
| Main lug | 10-4 AWG | 5.0 Nm (45 lb-in) |
| | 3-2/0 AWG | 5.6 Nm (50 lb-in) |

Copper conductors only, rated min. 75°C
 Follow NFPA 70 (NEC), or CSA C22.1 part 1, and all local codes.
 For DG Breaker larger than 20A, use wire insulated for 90°C
 based on 75°C ampacities.

Designed in California and New Zealand
 Made in Mexico

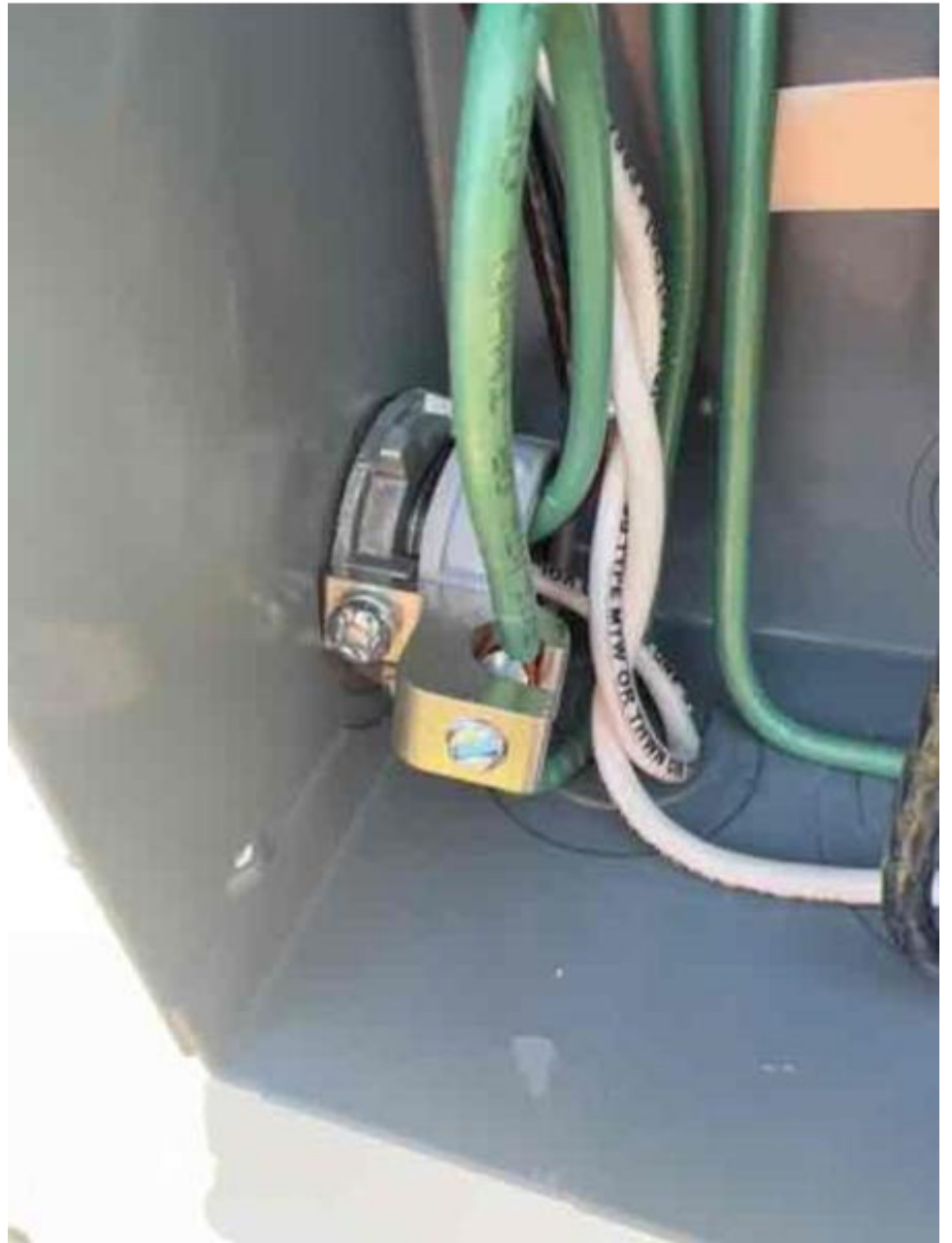
For IQ-8 C
 Forming







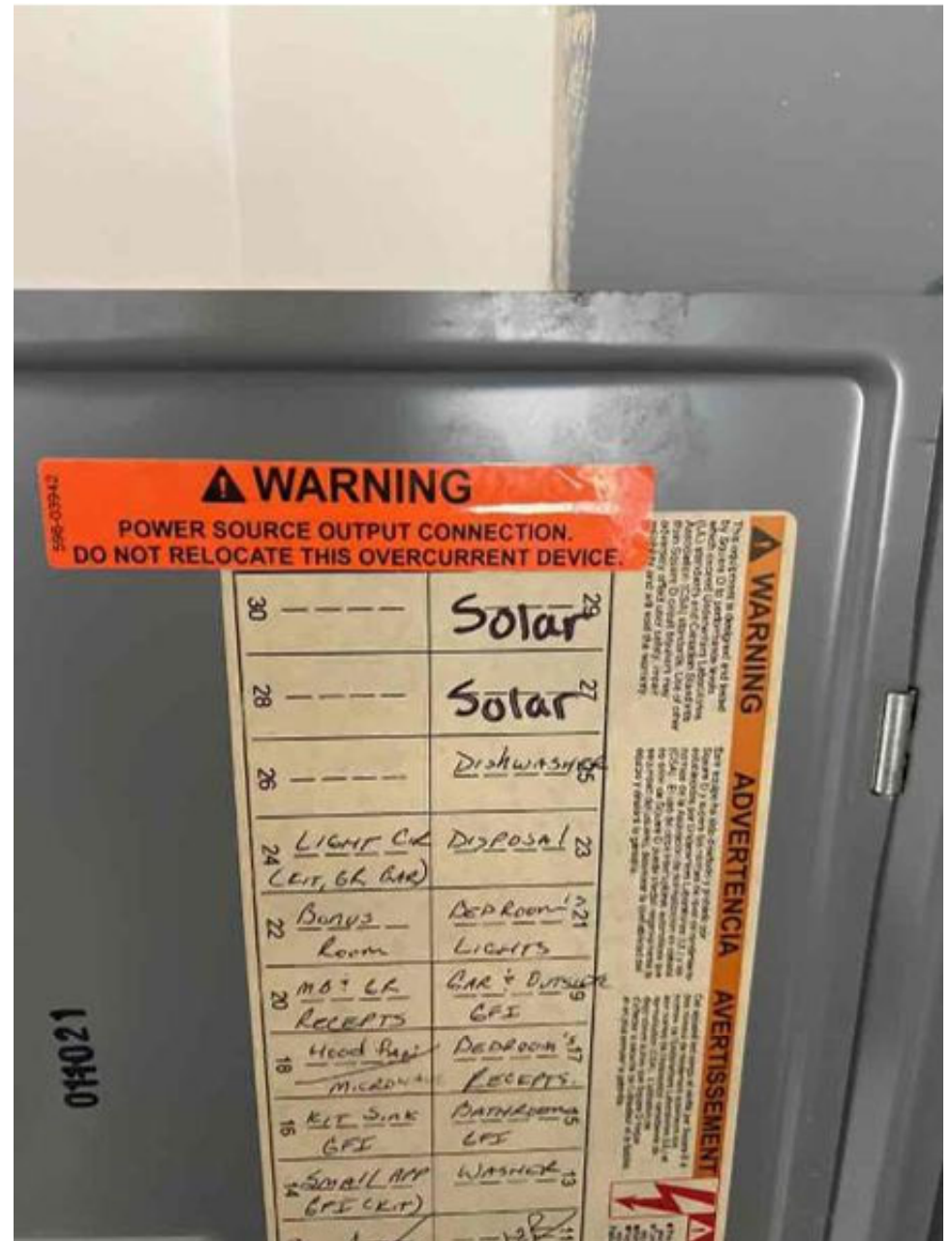




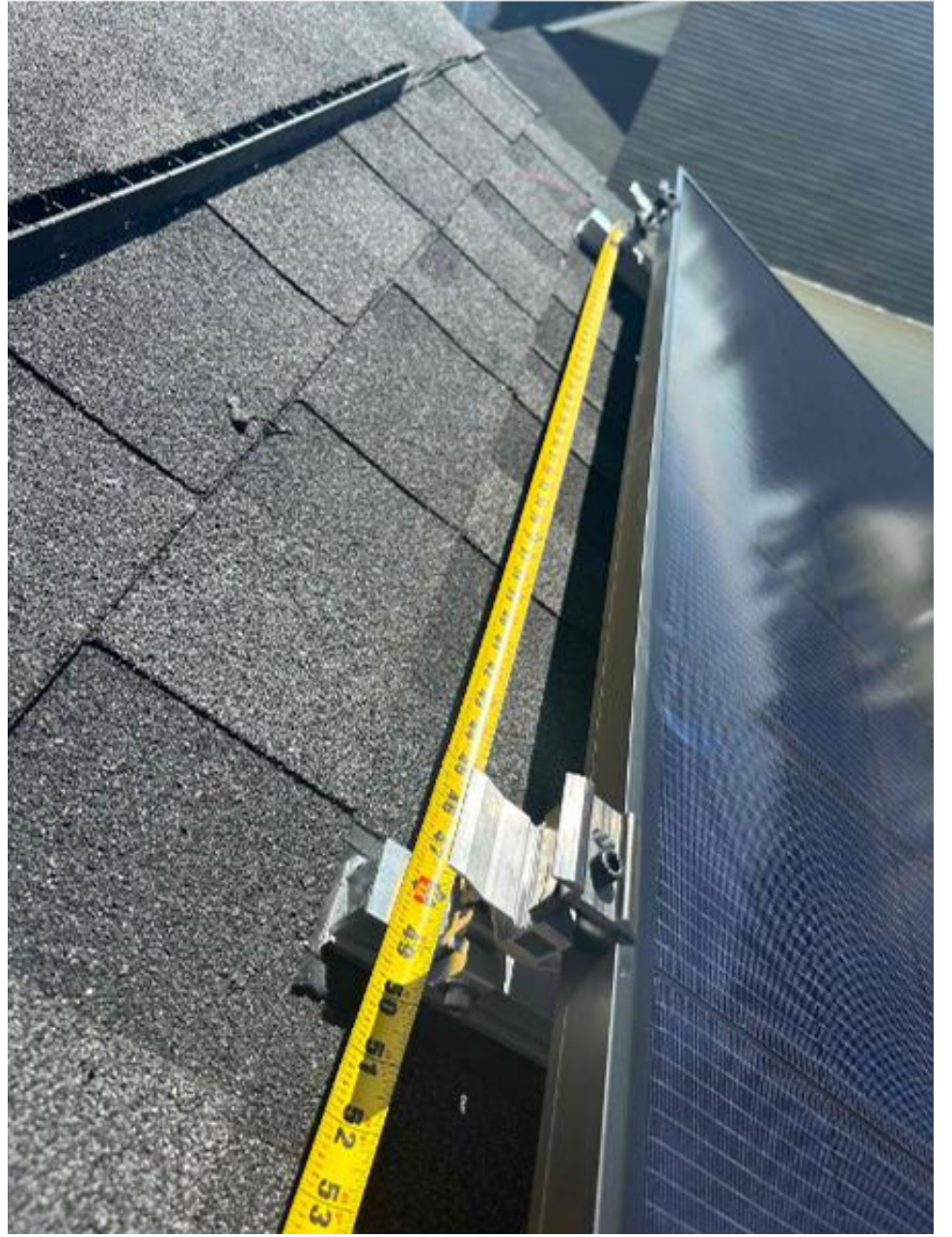


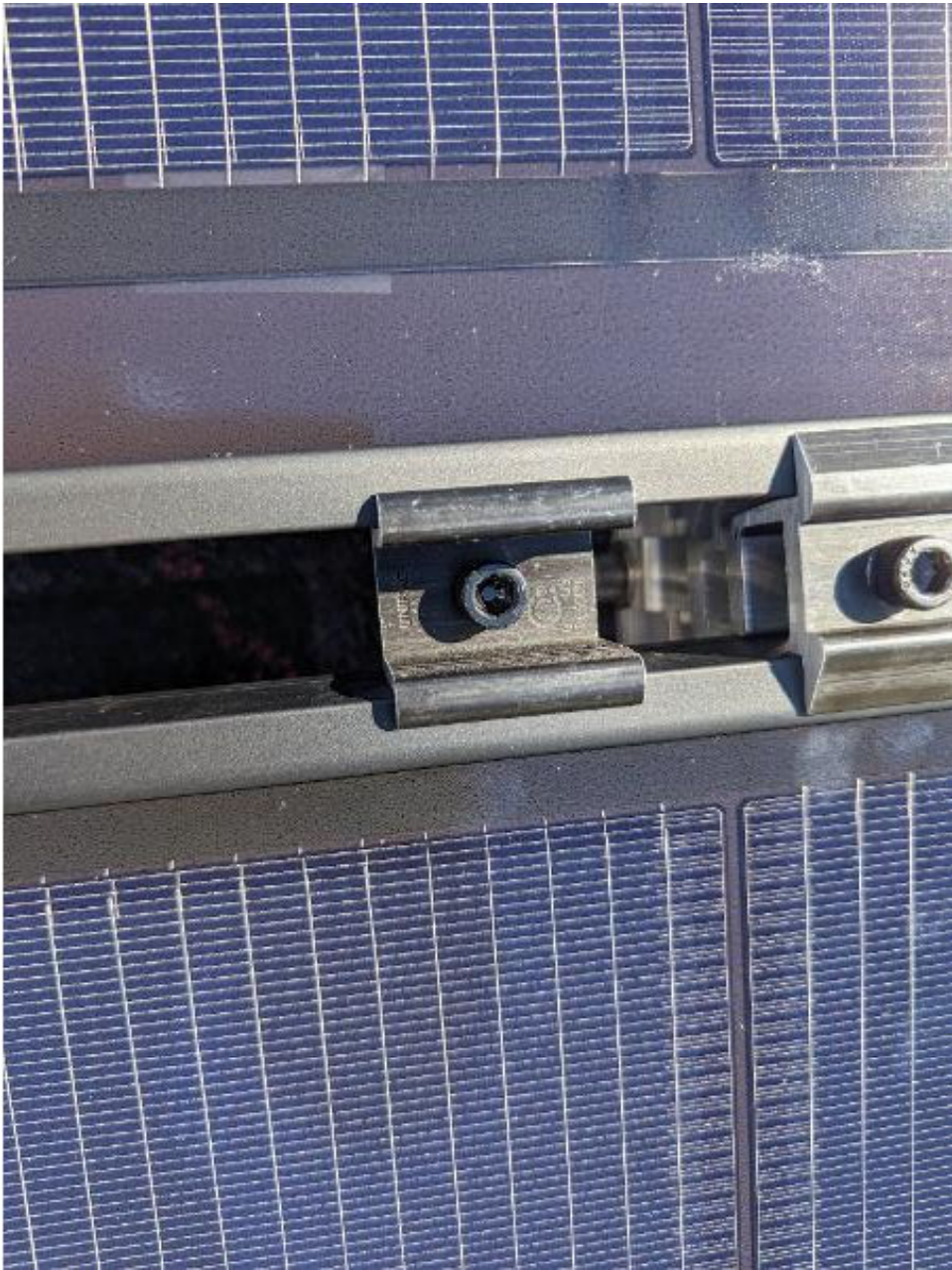






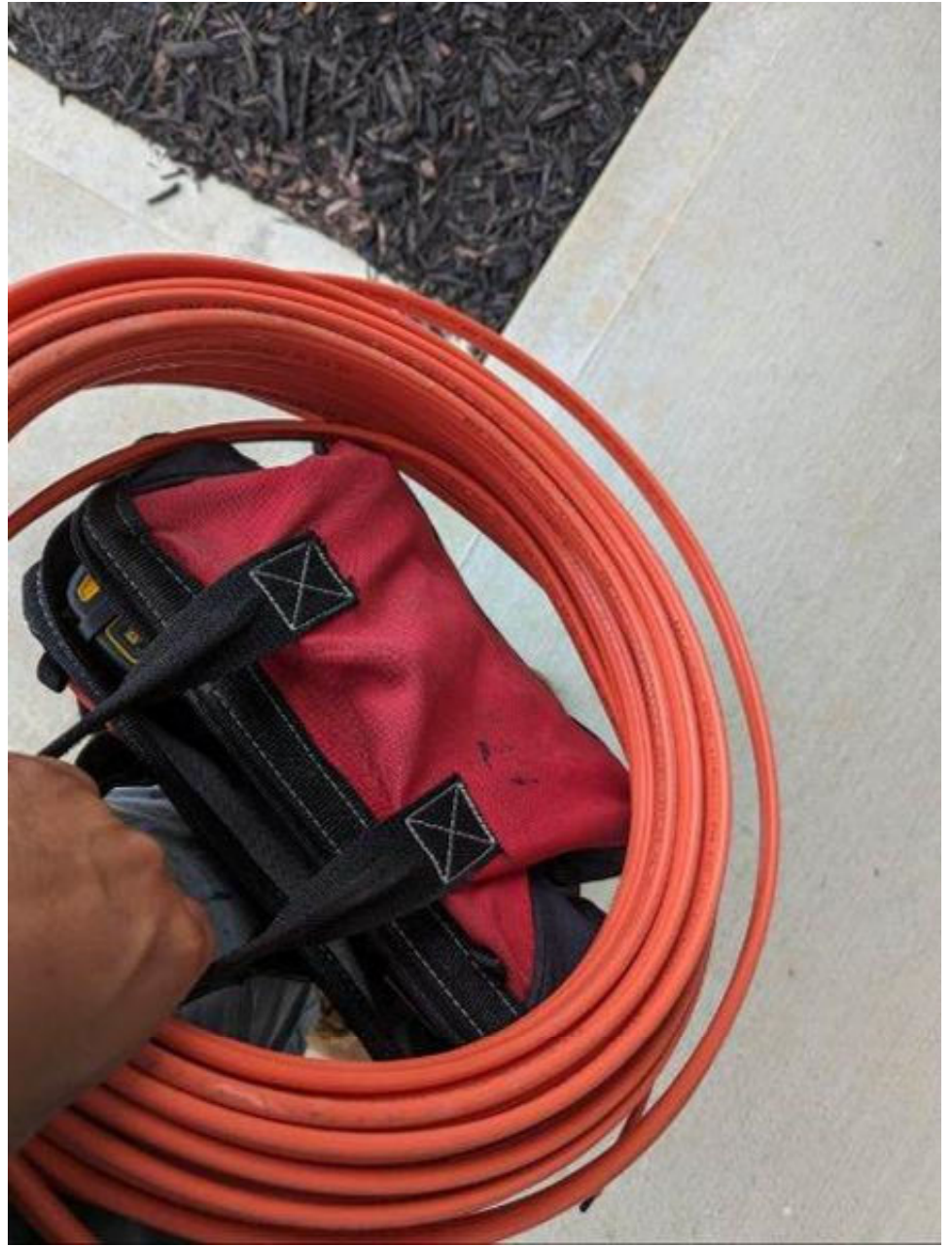


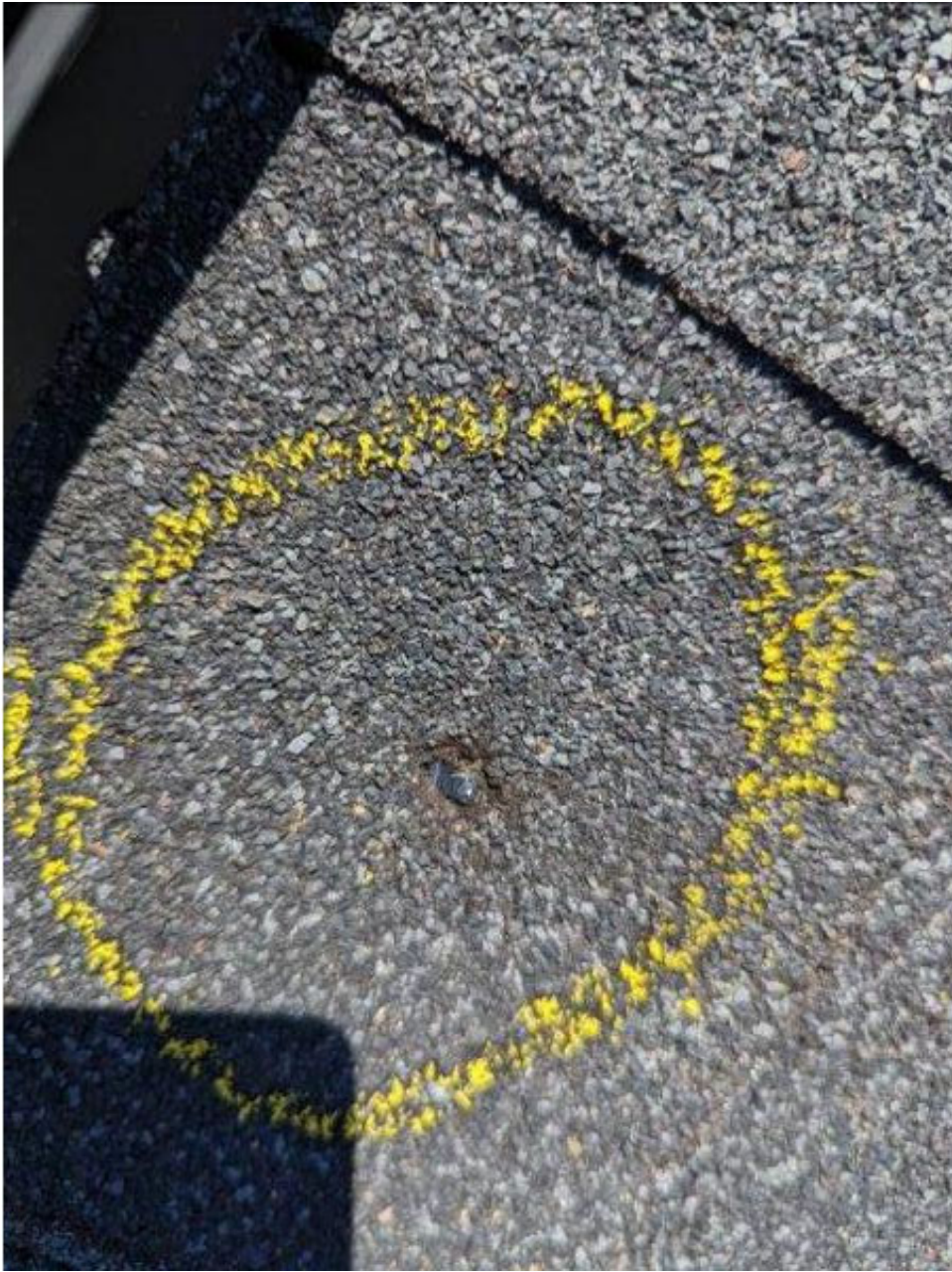


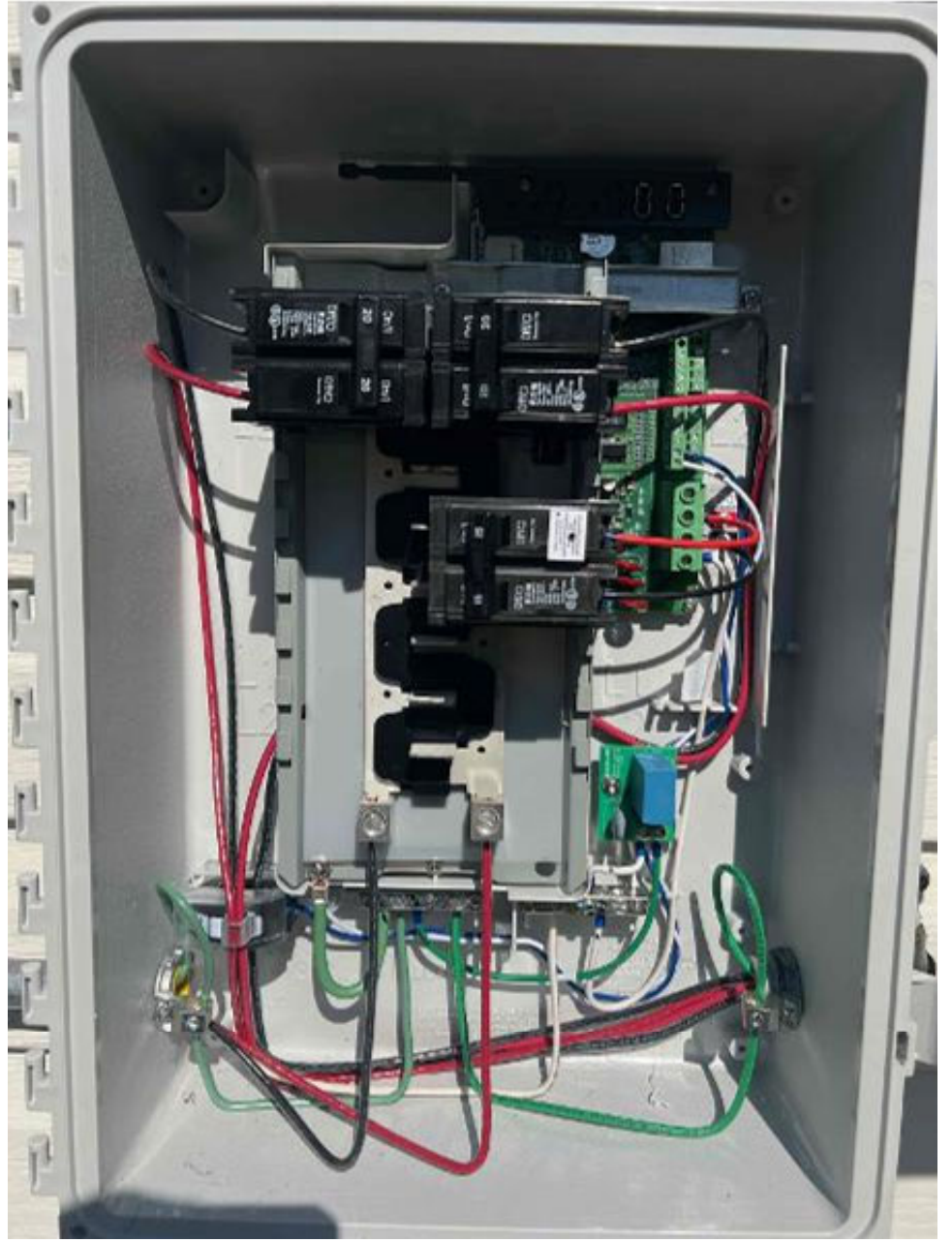


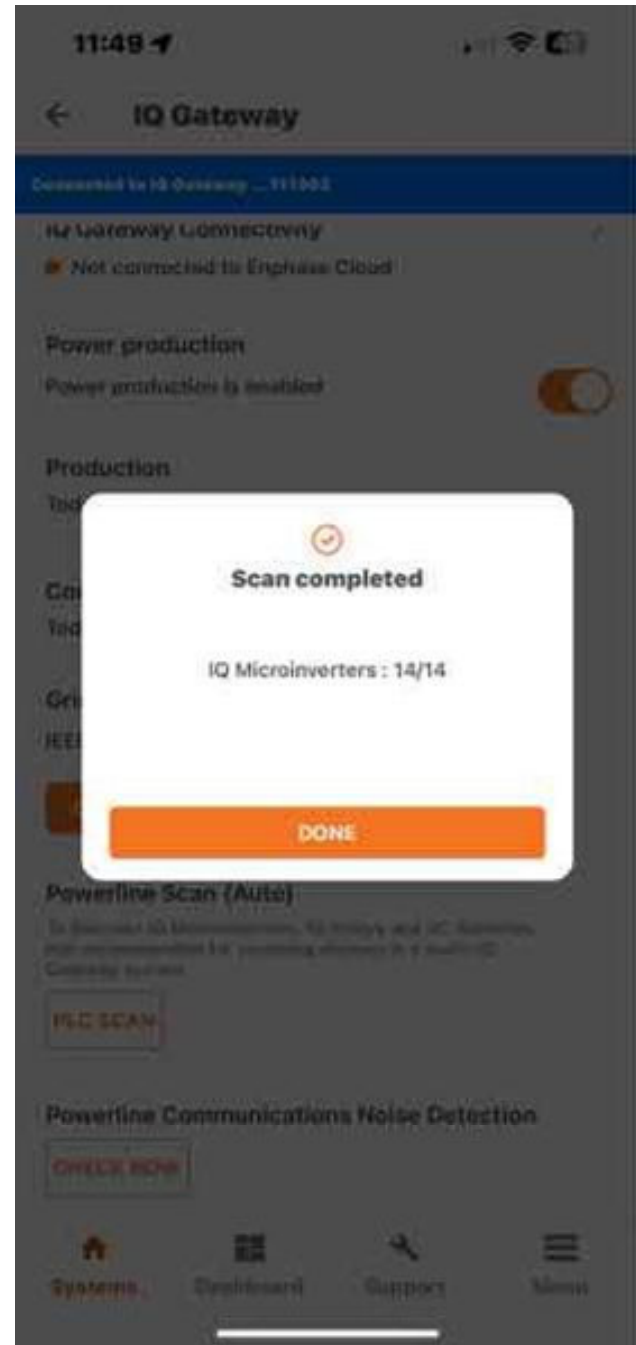












← Sync Status

Device and Sync Status

Online ✓
Fully synced

Unsynced Items

| | |
|---------|---|
| Media | 0 |
| Project | 0 |

Sync Settings

Sync on Wifi only OFF

[Having trouble syncing?](#)

11:50 📶 🔋

← Wi-Fi Configuration

Connected to IQ Gateway ...111902

Connected to: WAVLINK-AC (Connected) 📶

IP Address: 192.168.10.140
Gateway IP: 192.168.10.1

[FORGET THIS NETWORK](#)

[SELECT ANOTHER NETWORK](#)

[Systems](#) [Dashboard](#) [Support](#) [Menu](#)



