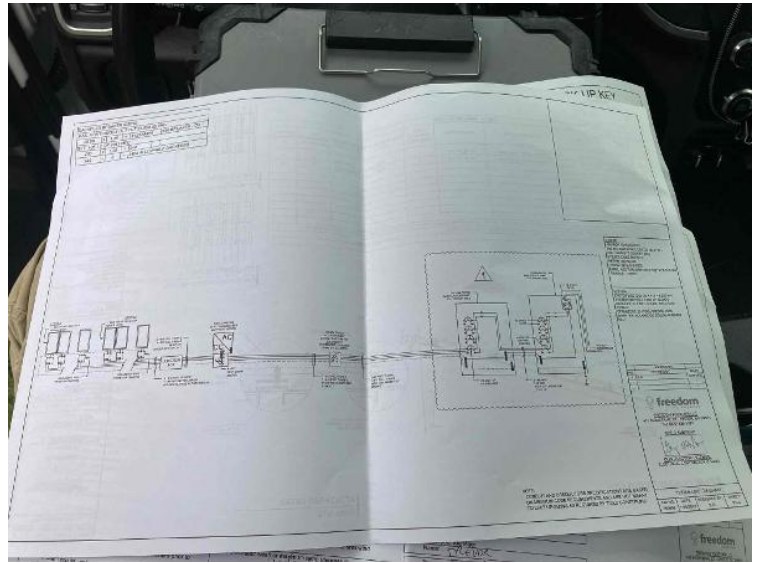


Job Check In / Picture of Front of the House



RGH02

Job Check In / Photo of 3-Line Diagram



RGH02  
Loc: 35.4058, -78.7029

Project Completion Photos / Complete Array Photos (all modules can be counted in each array)



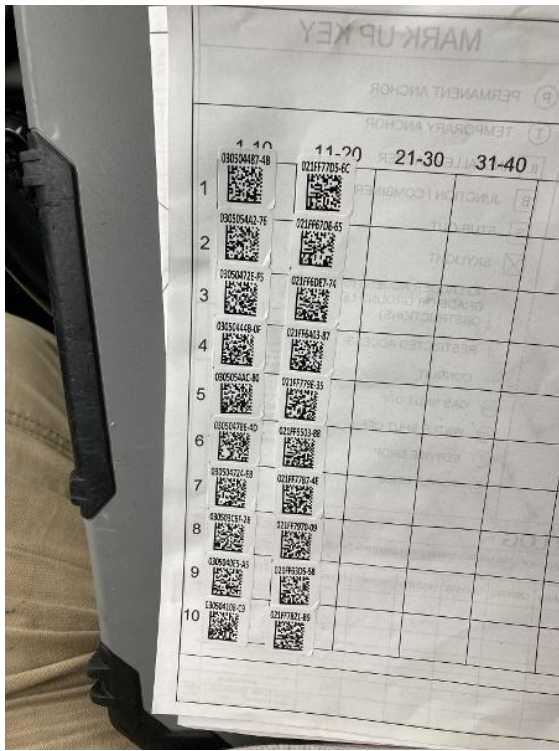
RGH02  
Loc: 35.4059, -78.7029

Project Completion Photos / Complete Array Photos (all modules can be counted in each array)



RGH02  
Loc: 35.4057, -78.7025

Project Completion Photos / Optimizer/Mirco Chart



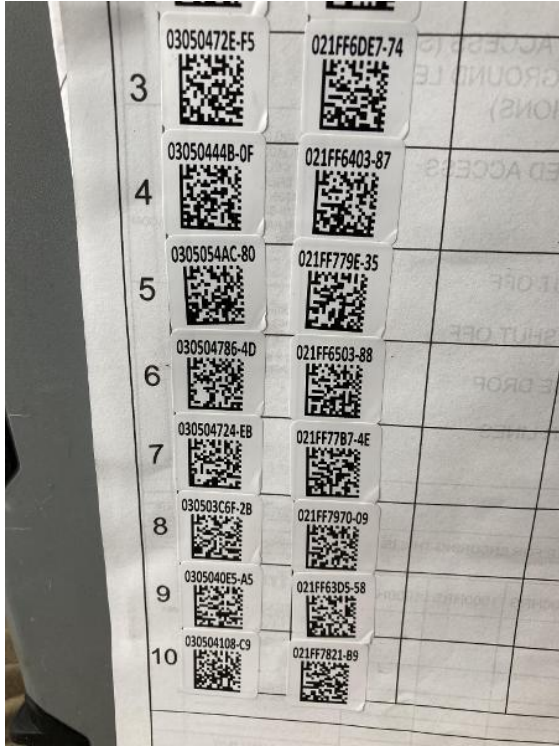
RGH02  
Loc: 35.4058, -78.703

Project Completion Photos / Optimizer/Mirco Chart



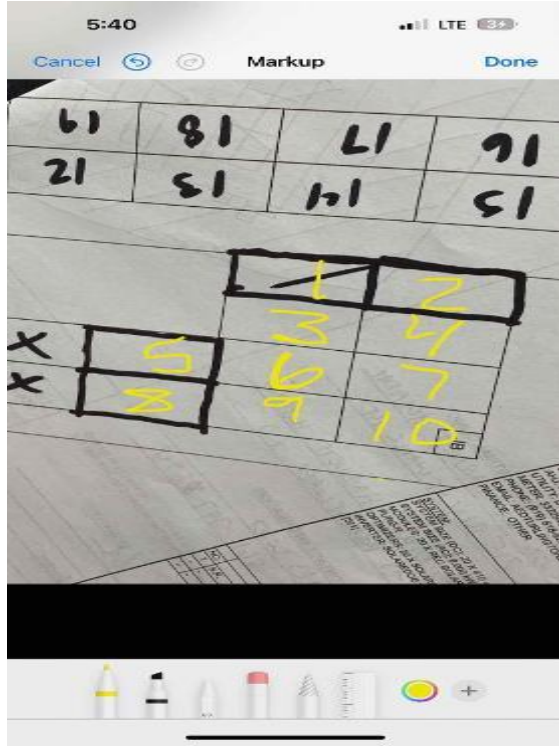
RGH02  
Loc: 35.4058, -78.703

Project Completion Photos / Optimizer/Mirco Chart

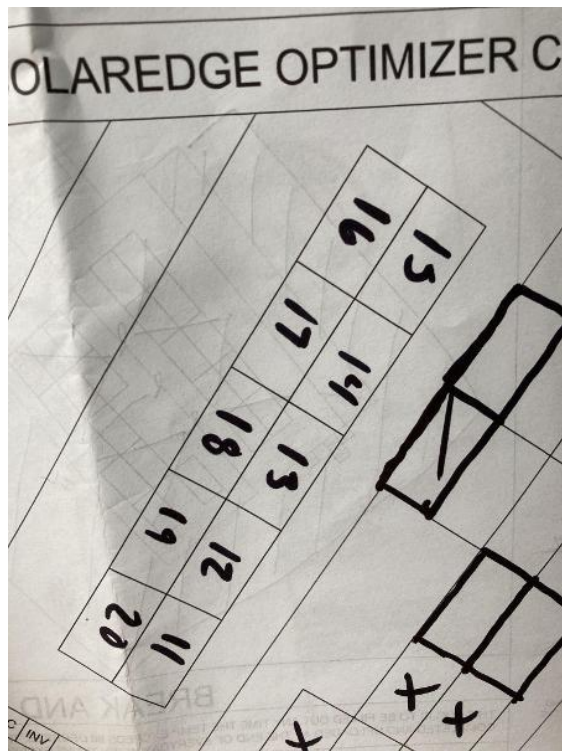


RGH02  
Loc: 35.4058, -78.703

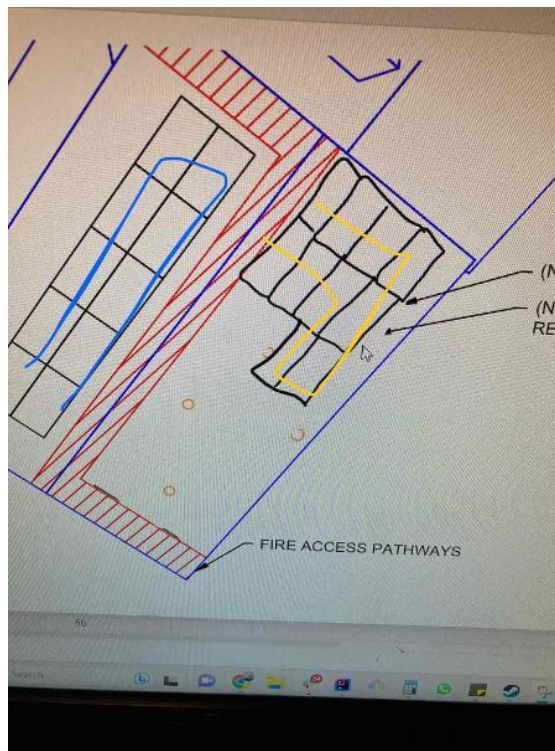
Project Completion Photos / Numbered Site Map



RGH02



RGH02  
Loc: 35.4057, -78.7029



RGH02



RGH02  
Loc: 35.4057, -78.7028



RGH02  
Loc: 35.4058, -78.7028

Project Completion Photos / Equipment Labels Complete



RGH02  
Loc: 35.4057, -78.7028

Project Completion Photos / Equipment Labels Complete



RGH02  
Loc: 35.4057, -78.7028

Project Completion Photos / Equipment Labels Complete



RGH02  
Loc: 35.4057, -78.7028

Project Completion Photos / Equipment Labels Complete



RGH02  
Loc: 35.4057, -78.7028

Project Completion Photos / Equipment Labels Complete



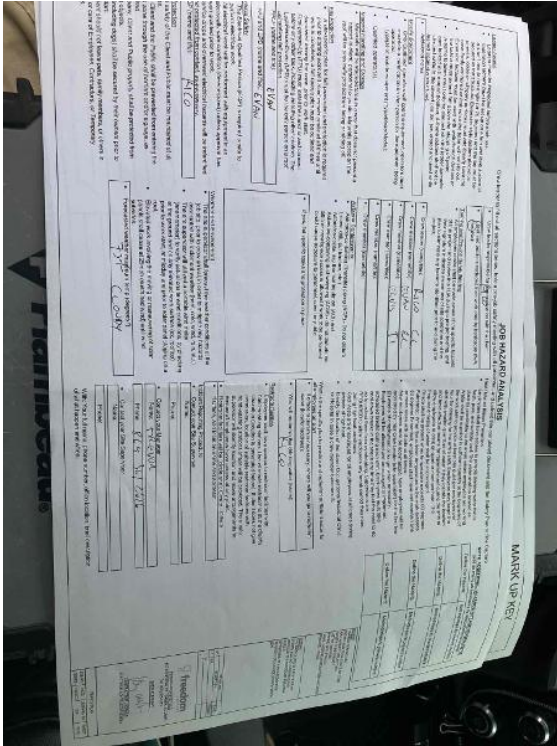
RGH02  
Loc: 35.4058, -78.7028

Site and Safety / Trucks/Trailers With Safety Cones



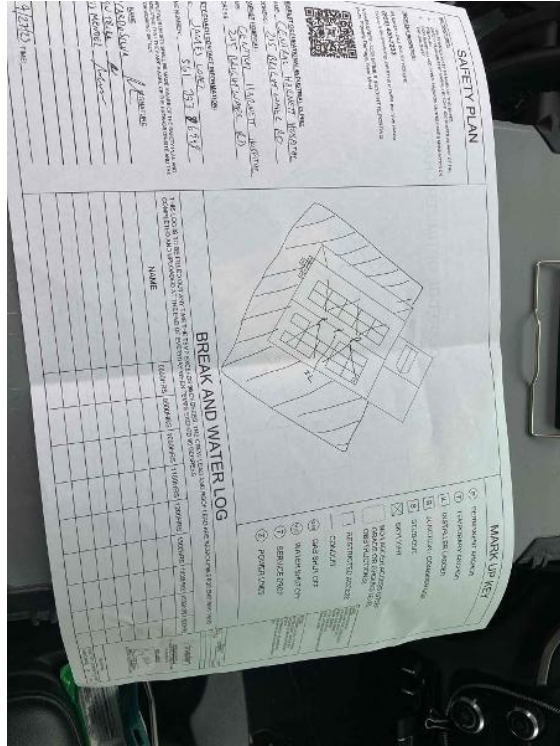
RGH02

Site and Safety / Photo of Completed JHA



RGH02  
Loc: 35.406, -78.7028

Site and Safety / Completed Site Safety Plan



RGH02  
Loc: 35.4058, -78.7029

Site and Safety / Caution Tape Surrounding Exclusion/Electrical Zones



RGH02

Site and Safety / Caution Tape Surrounding Exclusion/Electrical Zones



RGH02

Site and Safety / Secured Ladder



RGH02

Site and Safety / Fall Protection (appropriate anchor installed + Figure 8 Knot + crew member fully suited in PPE)



RGH02

Site and Safety / Service Equipment De-energized with Lock Out Tag Out



RGH02  
Loc: 35.4057, -78.7028

Site and Safety / Electrical PPE Selfie



RGH02  
Loc: 35.4058, -78.7028

Site and Safety / PPE Anchor Sealed (Include Ladder Anchor If Used)



RGH02

Site and Safety / PPE Anchor Sealed (Include Ladder Anchor If Used)



RGH02

Waterproofing All Penetrations / All Penetrations Are Back-filled



RGH02

Waterproofing All Penetrations / U-Shape of Sealant Applied to the Flashing



RGH02

Waterproofing All Penetrations / Flashing and L-foot or Rail-less Slider Complete



RGH02

Waterproofing All Penetrations / Flashing and L-foot or Rail-less Slider Complete



RGH02



Waterproofing All Penetrations / PPE Anchor Penetrations Sealed



RGH02

Waterproofing All Penetrations / PPE Anchor Penetrations Sealed



RGH02

Module Installation / Close Up of Trimrail Splice + Trimrail Clip + Trimrail Roof Attachment Complete



RGH02

Module Installation / Close Up of Trimrail Splice + Trimrail Clip + Trimrail Roof Attachment Complete



RGH02

Module Installation / Close Up of Flashkit Slider Complete



RGH02

Module Installation / Close Up of Flashkit Slider Complete



RGH02

Module Installation / Optimizer + MLPE Mount



RGH02  
Loc: 35.4059, -78.7029

Module Installation / Optimizer + MLPE Mount



RGH02  
Loc: 35.4058, -78.7027

Module Installation / Ready for Modules (All rail-less parts required to land modules complete)



RGH02

Module Installation / Ready for Modules (All rail-less parts required to land modules complete)



RGH02

Module Installation / Ready for Modules (All rail-less parts required to land modules complete)



RGH02

Module Installation / Ready for Modules (All rail-less parts required to land modules complete)



RGH02

Module Installation / Ready for Modules (All rail-less parts required to land modules complete)



RGH02

Module Installation / Ready for Modules (All rail-less parts required to land modules complete)



RGH02

Module Installation / Ready for Modules (All rail-less parts required to land modules complete)



RGH02

Module Installation / Ready for Modules (All rail-less parts required to land modules complete)



RGH02

Module Installation / Ready for Modules (All rail-less parts required to land modules complete)



RGH02

Module Installation / Ready for Modules (All rail-less parts required to land modules complete)



RGH02

Module Installation / Ready for Modules (All rail-less parts required to land modules complete)



RGH02

Module Installation / Ready for Modules (All rail-less parts required to land modules complete)



RGH02

Module Installation / Ready for Modules (All rail-less parts required to land modules complete)



RGH02

Module Installation / Ready for Modules (All rail-less parts required to land modules complete)



RGH02

Module Installation / Ready for Modules (All rail-less parts required to land modules complete)



RGH02

Module Installation / Ready for Modules (All rail-less parts required to land modules complete)



RGH02

Module Installation / Ready for Modules (All rail-less parts required to land modules complete)



RGH02

Module Installation / Ready for Modules (All rail-less parts required to land modules complete)



RGH02

Module Installation / Ready for Modules (All rail-less parts required to land modules complete)



RGH02

Module Installation / Ready for Modules (All rail-less parts required to land modules complete)



RGH02

Module Installation / Ready for Modules (All rail-less parts required to land modules complete)



RGH02

Module Installation / Ready for Modules (All rail-less parts required to land modules complete)



RGH02

Module Installation / Ready for Modules (All rail-less parts required to land modules complete)



RGH02

Module Installation / Ready for Modules (All rail-less parts required to land modules complete)



RGH02



Module Installation / Ready for Modules (All rail-less parts required to land modules complete)



RGH02

Module Installation / Ready for Modules (All rail-less parts required to land modules complete)



RGH02

Module Installation / Ready for Modules (All rail-less parts required to land modules complete)



RGH02

Module Installation / Ready for Modules (All rail-less parts required to land modules complete)



RGH02

Module Installation / Module Label



RGH02  
Loc: 35.4058, -78.7027

Module Installation / Module Label



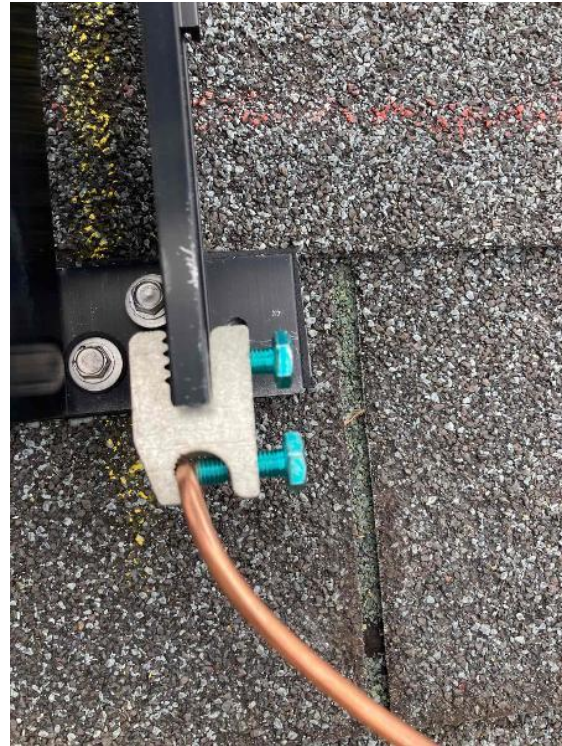
RGH02  
Loc: 35.4059, -78.7029

Module Installation / Module Gapping: Tape Measure showing 3/8" - 1" Gap



RGH02  
Loc: 35.4058, -78.7027

Module Installation / Trimrail Bonding Clamp + Side View of N/S Bonding Clamp



RGH02  
Loc: 35.4057, -78.7027

Module Installation / Trimrail Bonding Clamp + Side View of N/S Bonding Clamp



RGH02  
Loc: 35.4059, -78.7028

Module Installation / Trimrail Bonding Clamp + Side View of N/S Bonding Clamp



RGH02  
Loc: 35.4058, -78.7028

Module Installation / Trimrail Bonding Clamp + Side View of N/S Bonding Clamp



RGH02  
Loc: 35.4058, -78.7026

Module Installation / Trimrail Bonding Clamp + Side View of N/S Bonding Clamp



RGH02  
Loc: 35.4058, -78.7027

Module Installation / Trimrail Bonding Clamp + Side View of N/S Bonding Clamp



RGH02  
Loc: 35.4058, -78.7027

Module Installation / Close Up of 6.5" Splice Installed



RGH02  
Loc: 35.4058, -78.7027

Module Installation / Bonding Path Between Several Modules (ground wire on 3 different lugs)



RGH02  
Loc: 35.4058, -78.7028

Module Installation / Bonding Path Between Several Modules (ground wire on 3 different lugs)



RGH02  
Loc: 35.4058, -78.7028

Module Installation / Bonding Path Between Several Modules (ground wire on 3 different lugs)



RGH02  
Loc: 35.4058, -78.7028

Module Installation / Wire management Under the Array (1 photo per row of modules per array)



RGH02

Module Installation / Wire management Under the Array (1 photo per row of modules per array)



RGH02

Rooftop Conduit Run / Conduit Support Flashing (U-Shape Seal + Installed)



RGH02  
Loc: 35.4059, -78.7028

Rooftop Conduit Run / Conduit Run: Overall Run Between Arrays, Down To Conduit Leaving Roof (Support every 5' for Sunrun jobs)



RGH02  
Loc: 35.4057, -78.7028

Rooftop Conduit Run / Conduit Run: Overall Run Between Arrays, Down To Conduit Leaving Roof (Support every 5' for Sunrun jobs)



RGH02  
Loc: 35.4058, -78.7027

Rooftop Conduit Run / Conduit Run: Overall Run Between Arrays, Down To Conduit Leaving Roof (Support every 5' for Sunrun jobs)



RGH02  
Loc: 35.4057, -78.7027

Rooftop Conduit Run / Conduit Run: Overall Run Between Arrays, Down To Conduit Leaving Roof (Support every 5' for Sunrun jobs)



RGH02  
Loc: 35.4058, -78.7027

Rooftop Conduit Run / Conduit Run: Overall Run Between Arrays, Down To Conduit Leaving Roof (Support every 5' for Sunrun jobs)



RGH02  
Loc: 35.4058, -78.7026

Rooftop Conduit Run / Conduit Run: Overall Run Between Arrays, Down To Conduit Leaving Roof (Support every 5' for Sunrun jobs)



RGH02  
Loc: 35.4058, -78.7027

Rooftop Conduit Run / Conduit Run: Overall Run Between Arrays, Down To Conduit Leaving Roof (Support every 5' for Sunrun jobs)



RGH02  
Loc: 35.4058, -78.7027

Rooftop Conduit Run / Shepherds Hook (conduit wrapping eave/rake)



RGH02  
Loc: 35.4057, -78.7028

Rooftop Conduit Run / Close up photo of Weep Holes + Wet Rated Wire Nuts /Terminal Blocks + Duct Seal complete



RGH02  
Loc: 35.4058, -78.7028

Rooftop Conduit Run / Close up photo of Weep Holes + Wet Rated Wire Nuts /Terminal Blocks + Duct Seal complete



RGH02  
Loc: 35.4058, -78.7028

Rooftop Conduit Run / Close up photo of Weep Holes + Wet Rated Wire Nuts /Terminal Blocks + Duct Seal complete



RGH02  
Loc: 35.4058, -78.7028

Electrical / Pullback Photo of Inverter Mounted



RGH02  
Loc: 35.4057, -78.7028



Electrical / Weep Holes Drilled at Lowest Point in Conduit Bodies Entering Inverter



RGH02  
Loc: 35.4058, -78.7028

Electrical / Inverter Serial Number + QR Code



RGH02  
Loc: 35.4059, -78.7028

Electrical / Cell Kit Box Label



RGH02  
Loc: 35.4059, -78.7028

Electrical / Inverter Interior With Top/Bottom Cover off (cell kit installed + Wiring Completed)



RGH02  
Loc: 35.4059, -78.7028

Electrical / Inverter Interior With Top/Bottom Cover off (cell kit installed + Wiring Completed)



RGH02  
Loc: 35.4059, -78.7028

Electrical / Inverter Interior With Top/Bottom Cover off (cell kit installed + Wiring Completed)



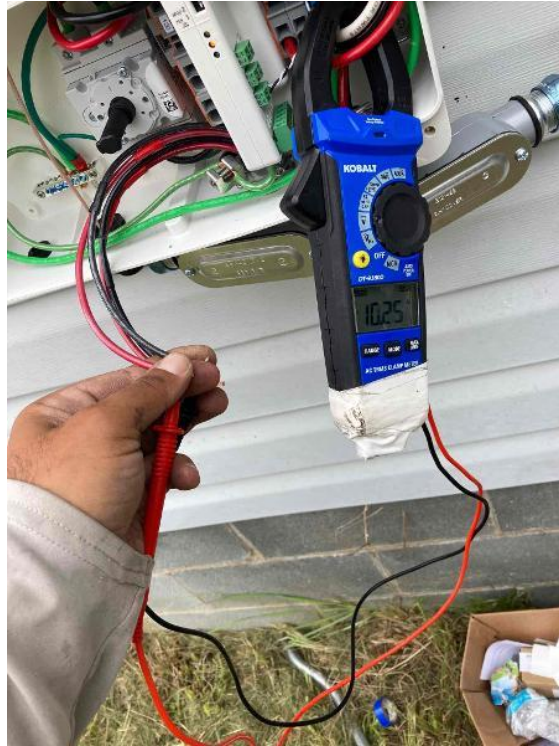
RGH02  
Loc: 35.4058, -78.7027

Electrical / String Voltage (1 Per String, Per Inverter)



RGH02  
Loc: 35.4057, -78.7029

Electrical / String Voltage (1 Per String, Per Inverter)



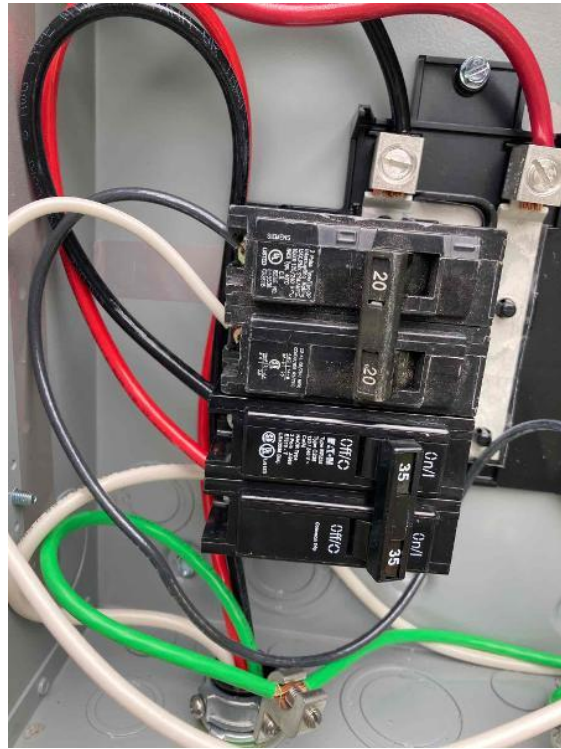
RGH02  
Loc: 35.4059, -78.7028

Electrical / Service or Sub Panel Dead Front Off (overall photo of entire panel showing all breakers where PV Breaker is landed)



RGH02  
Loc: 35.4057, -78.7027

Electrical / Close Up Photo of PV Breaker Amp Rating



RGH02  
Loc: 35.4059, -78.7028

Electrical / Close Up Photo of PV Breaker Amp Rating



RGH02  
Loc: 35.4057, -78.7028

Electrical / Close Up Photo of Panel Label + Main Breaker Rating on The Breaker



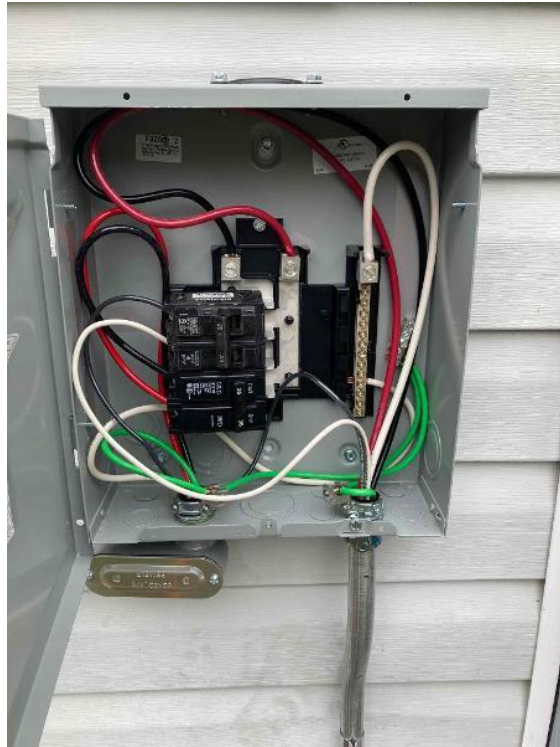
RGH02  
Loc: 35.4057, -78.7028

Electrical / Show All Completed Wiring and Terminations for Each BOS Component



RGH02  
Loc: 35.4059, -78.7028

Electrical / Show All Completed Wiring and Terminations for Each BOS Component



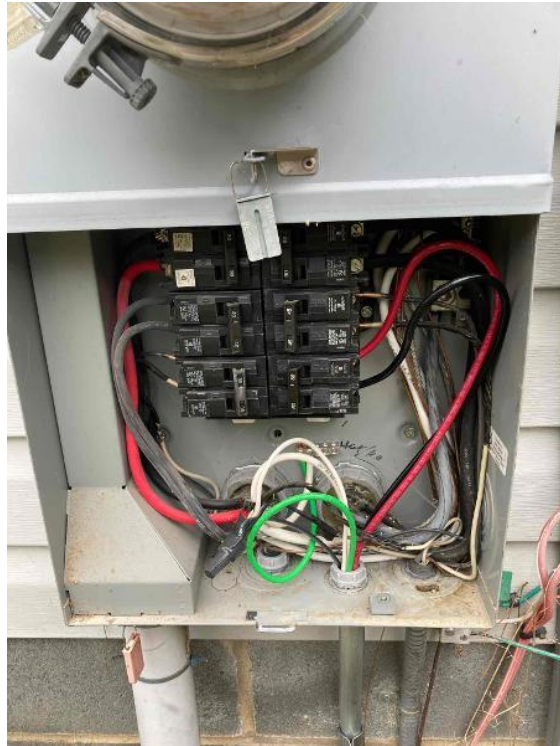
RGH02  
Loc: 35.4257, -78.7288

Electrical / Show All Completed Wiring and Terminations for Each BOS Component



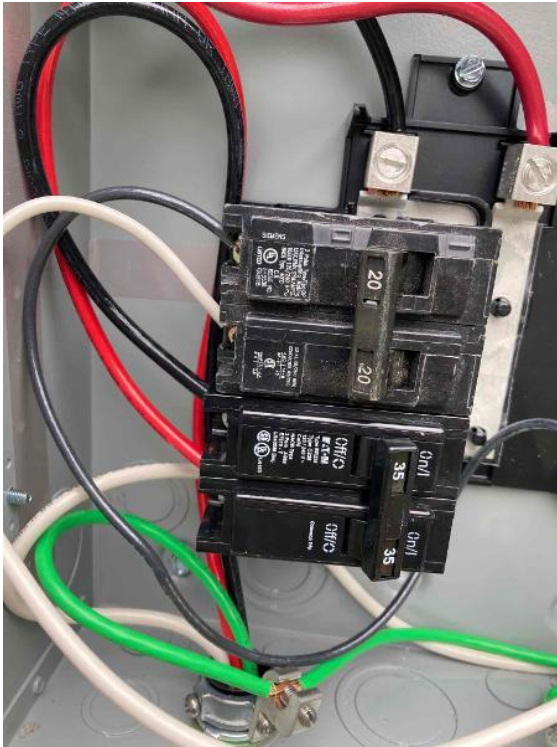
RGH02  
Loc: 35.4057, -78.7028

Electrical / Show All Completed Wiring and Terminations for Each BOS Component



RGH02  
Loc: 35.4057, -78.7027

Electrical / Show All Completed Wiring and Terminations for Each BOS Component



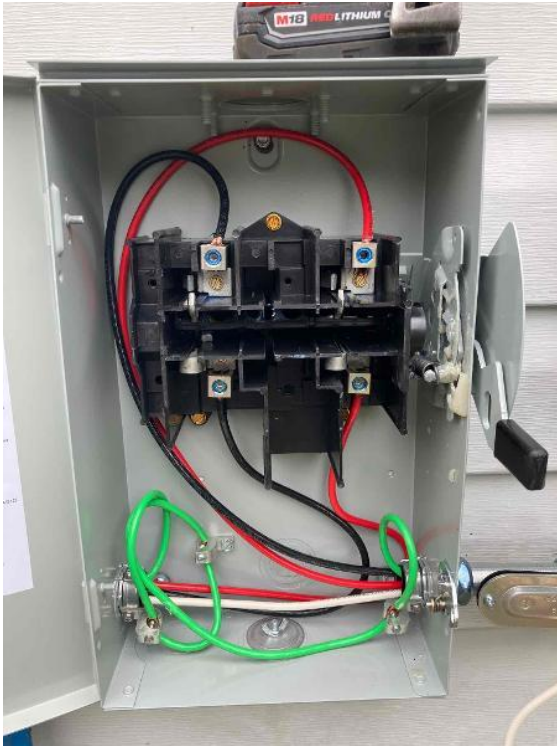
RGH02  
Loc: 35.4059, -78.7028

Electrical / Show All Completed Wiring and Terminations for Each BOS Component



RGH02  
Loc: 35.4059, -78.7028

Electrical / Show All Completed Wiring and Terminations for Each BOS Component



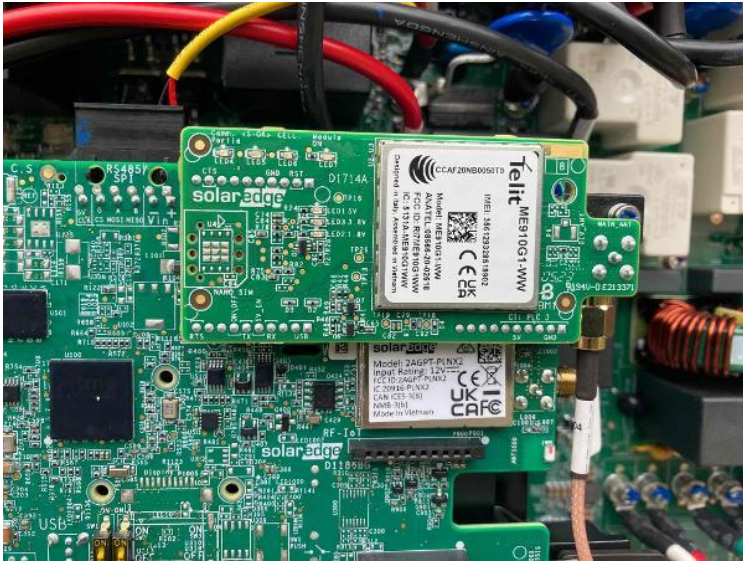
RGH02  
Loc: 35.4059, -78.7028

Electrical / Show All Completed Wiring and Terminations for Each BOS Component



RGH02  
Loc: 35.4059, -78.7028

Electrical / Show All Completed Wiring and Terminations for Each BOS Component



RGH02  
Loc: 35.4058, -78.7027

Electrical / GEC Path to Ground (ground wire run from existing ground rods /ufer/cold water bond)



RGH02  
Loc: 35.4059, -78.7028

Electrical / GEC Path to Ground (ground wire run from existing ground rods /ufer/cold water bond)



RGH02  
Loc: 35.4059, -78.7028

Electrical / GEC Path to Ground (ground wire run from existing ground rods /ufer/cold water bond)



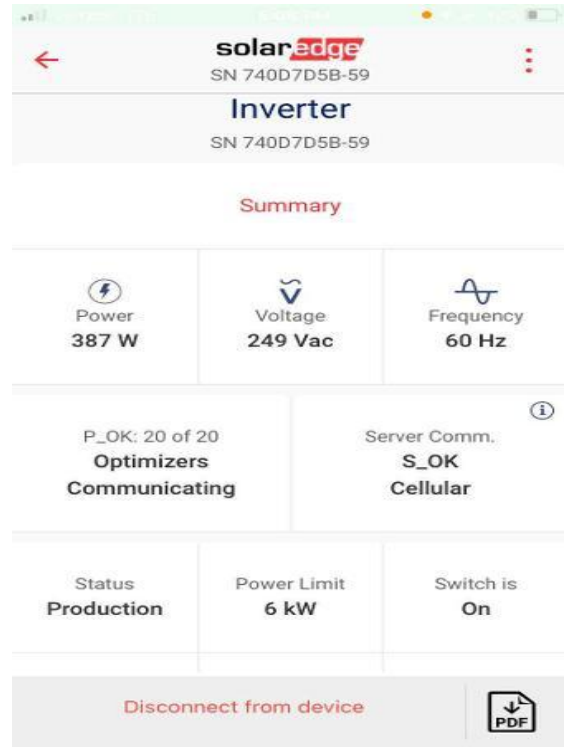
RGH02  
Loc: 35.4059, -78.7028

Electrical / GEC Path to Ground (ground wire run from existing ground rods /ufer/cold water bond)



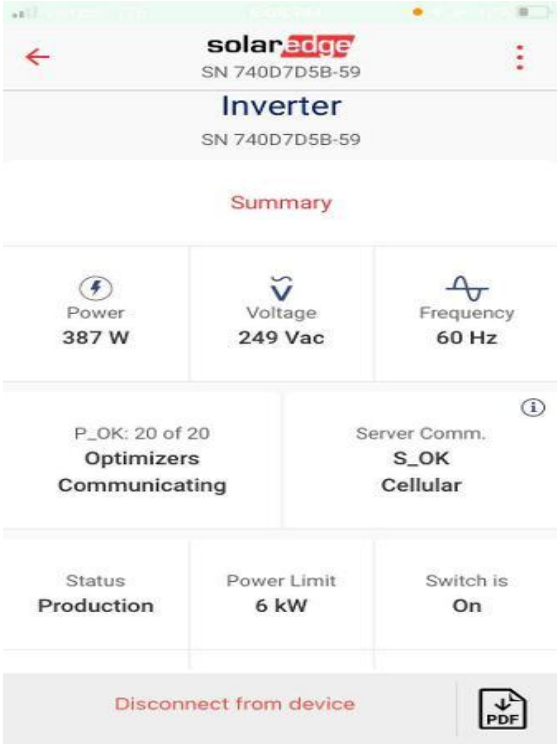
RGH02  
Loc: 35.4058, -78.7028

Commissioning / SolarEdge SetApp Screenshots( showing the inverter producing power + P\_OK)



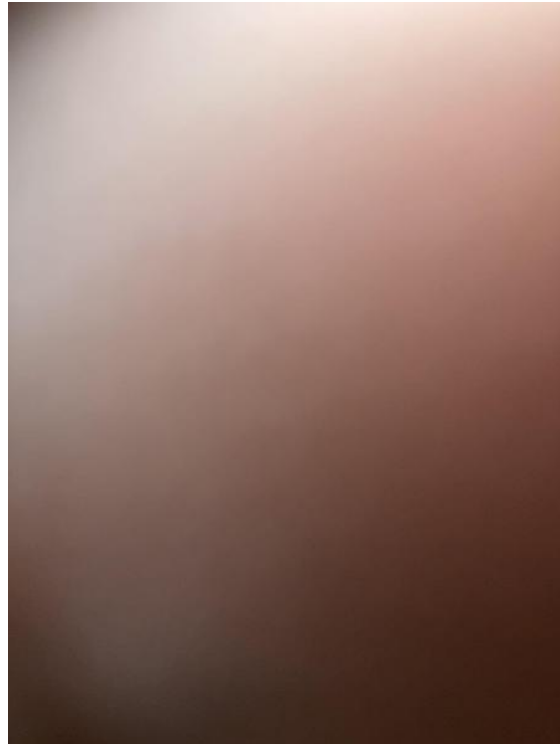
RGH02

Commissioning / SolarEdge SetApp Screenshot (S\_OK)



RGH02

Crew Lead Review + Quality Assurance / Photo(s) and/or Screen Shots of Missing Adders



RGH02  
Loc: 35.4058, -78.703