

[Start syncing now](#)

## Connection

Cellular

## UNSYNCED ITEMS

Projects

0

Photos

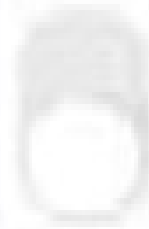
0

Fields

0

## SYNC SETTINGS

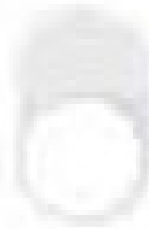
Sync on Wifi only





Optimize photo download



Sync notifications





 202244724377	 202244124000	 202244128505
 202244726136	 202244181123	 202244134368
 202244121428	 202244119723	 202244128412


HASE.

3400-4  
2018 COMPLAINT

FEDERAL BUREAU OF INVESTIGATION  
 U.S. DEPARTMENT OF JUSTICE  
 400 ANDREWS AVENUE  
 WASHINGTON, DC 20535

SEARCHED \_\_\_\_\_ INDEXED \_\_\_\_\_  
 SERIALIZED \_\_\_\_\_ FILED \_\_\_\_\_  
 MAR 11 2018  
 FBI - MEMPHIS

SEARCHED	INDEXED
SERIALIZED	FILED
MAR 11 2018	
FBI - MEMPHIS	



# IQ Combiner 4

Photovoltaic

Combiner Box

X2-IQ-AM1-240-4

IEEE1547:2018 COMPLIANT

### Electrical ratings

Voltage 240VAC, 60Hz  
DG Breakers 80A MAX (combined)  
DG Inputs 64A MAX (combined)  
Output 65A MAX, 90A MAX feeder OCPD  
Temperature 46°C MAX ambient  
For DG breaker, use only Eaton BR series.

  
202329146583

S/N:   
202329146583

P/N:   
883-00353 15 92

Dedicated solar and DG Combiner Box - do not add loads  
10 AMP or 15 AMP IQ Gateway Breaker not used for backfeed

Connection	Wire sizes	Torque
DG Breaker (1, 2, 3, 4)	14-10 AWG 8 AWG 6-4 AWG	2.2 Nm (20 lb- 2.8 Nm (25 lb- 3.0 Nm (27 lb-
60A Circuit Breaker only	4-1/0 AWG	5.0 Nm (45 lb-ft)
IQ Gateway Breaker	14-10 AWG	2.26 Nm (20 lb- 5.6 Nm (45 lb-ft)
	Large screw Small screw	2-1/0 AWG 14-3 AWG
Neutral and ground		

# IQ Combiner 4

## Photovoltaic Combiner Box

X2-IQ-AM1-240-4

IEEE1547-2018 COMPLIANT

### Electrical ratings

Voltage 240VAC, 60Hz

DG Breakers 80A MAX (combined)

DG Inputs 64A MAX (combined)

Output 65A MAX, 90A MAX feeder OCPD

Temperature 46°C MAX ambient

For DG breaker, use only Eaton BR series.



202329146583

S/N:



202329146583

P/N:



883-0035

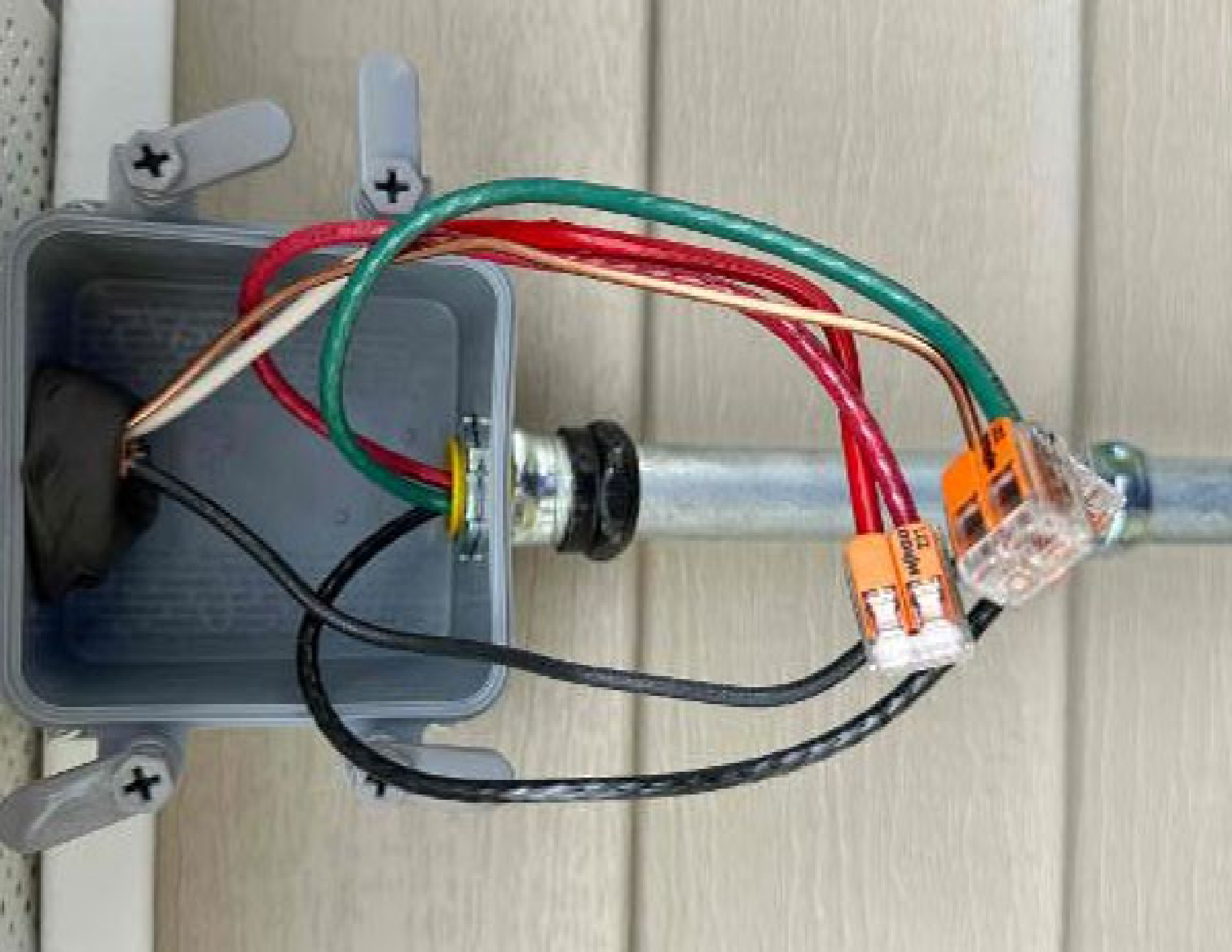
Dedicated solar and DG Combiner Box - do not add loads  
10 AMP or 15 AMP IQ Gateway Breaker not used for backf

Connection	Wire sizes	
DG Breaker (1, 2, 3, 4)	14-10 AWG 8 AWG 6-4 AWG	
60A Circuit Breaker only	4-1/0 AWG	
IQ Gateway Breaker	14-10 AWG	
Neutral and ground	Large screw	2-1/0 AWG 14-3 AWG
	Small screw	6 AWG 8 AWG 10-14 AWG
Main lug	10-4 AWG	3-6 Nm (30 2.6 Nm (22 2.3 Nm (20
	3-2/0 AWG	5.0 Nm (45 5.6 Nm (50

Copper conductors only, rated min. 75°C  
Follow NFPA 70 (NEC), or CSA C22.1 part 1, and all local codes.

For DG Breakers larger than 30A, use wire insulated for 90°C  
based on 75°C ampacity.

Designed in California and New Zealand  
Made in Mexico

















PHOTOVOLTAIC SYSTEM  
AC DISCONNECT

**⚠ WARNING** ⚠

DUAL POWER SUPPLY

10-25 AMP/120VAC/15A/120VAC/15A/120VAC/15A

ELECTRIC SHOCK HAZARD

DO NOT TOUCH TERMINALS OR WIRING. TERMINALS ON BOTH THE LINE AND LOAD SIDE MAY BE ENERGIZED IN THE OPEN POSITION.

OPERATING VOLTAGE: 

120V	VOLTS
------	-------

OPERATING CURRENT: 

15A	AMPS
-----	------

**⚠ WARNING**

THIS EQUIPMENT FED BY MULTIPLE SOURCES. TOTAL RATING OF ALL OVERCURRENT DEVICES, EXCLUDING

MAIN SUPPLY OVERCURRENT DEVICE, SHALL NOT EXCEED CAPACITY OF BUSBAR.


**⚠ WARNING**

PHOTOVOLTAIC SYSTEM  
COMBINER PANEL

DO NOT ADD LOADS

**⚠ WARNING**

WARNING: THIS EQUIPMENT IS FED BY MULTIPLE SOURCES. TOTAL RATING OF ALL OVERCURRENT DEVICES, EXCLUDING MAIN SUPPLY OVERCURRENT DEVICE, SHALL NOT EXCEED CAPACITY OF BUSBAR.

 ENPHASE



PHOTOVOLTAIC SYSTEM  
 AC DISCONNECT  
**WARNING**  
 DUAL POWER SUPPLY  
 This device is designed to disconnect the AC power supply to the PV system in the event of a fault. It is not intended to be used as a disconnect for the PV system.

For more information, please contact the manufacturer.

Product: PV-DC-DC-CONV-100-100-100  
 Manufacturer: SunPower Corporation  
 Address: 1600 Westwood Blvd., Sunnyvale, CA 94086  
 Phone: (415) 333-3333  
 Website: [www.sunpower.com](http://www.sunpower.com)

**PHOTOVOLTAIC SYSTEM  
 AC DISCONNECT**  
**WARNING**  
 DUAL POWER SUPPLY  
 This device is designed to disconnect the AC power supply to the PV system in the event of a fault. It is not intended to be used as a disconnect for the PV system.

**SOLAR PV SYSTEM EQUIPPED  
 WITH RAPID SHUTDOWN**

THIS RAPID SHUTDOWN  
 SWITCH IS THE  
 OFF POSITION TO  
 SHUT DOWN PV SYSTEM  
 AND REMOVE  
 PROTECTIVE  
 IN THE BOX



**WARNING**  
 This device is designed to disconnect the AC power supply to the PV system in the event of a fault. It is not intended to be used as a disconnect for the PV system.

**WARNING**  
 This device is designed to disconnect the AC power supply to the PV system in the event of a fault. It is not intended to be used as a disconnect for the PV system.





20

 1-POE HOM  
10 kA  
120/240V  
1-Pole  
NOMI  
LISTED  
C.C.  
DP-4075

**PV SOLAR BREAKER**  
**DO NOT RELOCATE**  
**THIS OVERCURRENT**  
**DEVICE**

25

26

27

 **WARNING**

**ELECTRIC SHOCK HAZARD**

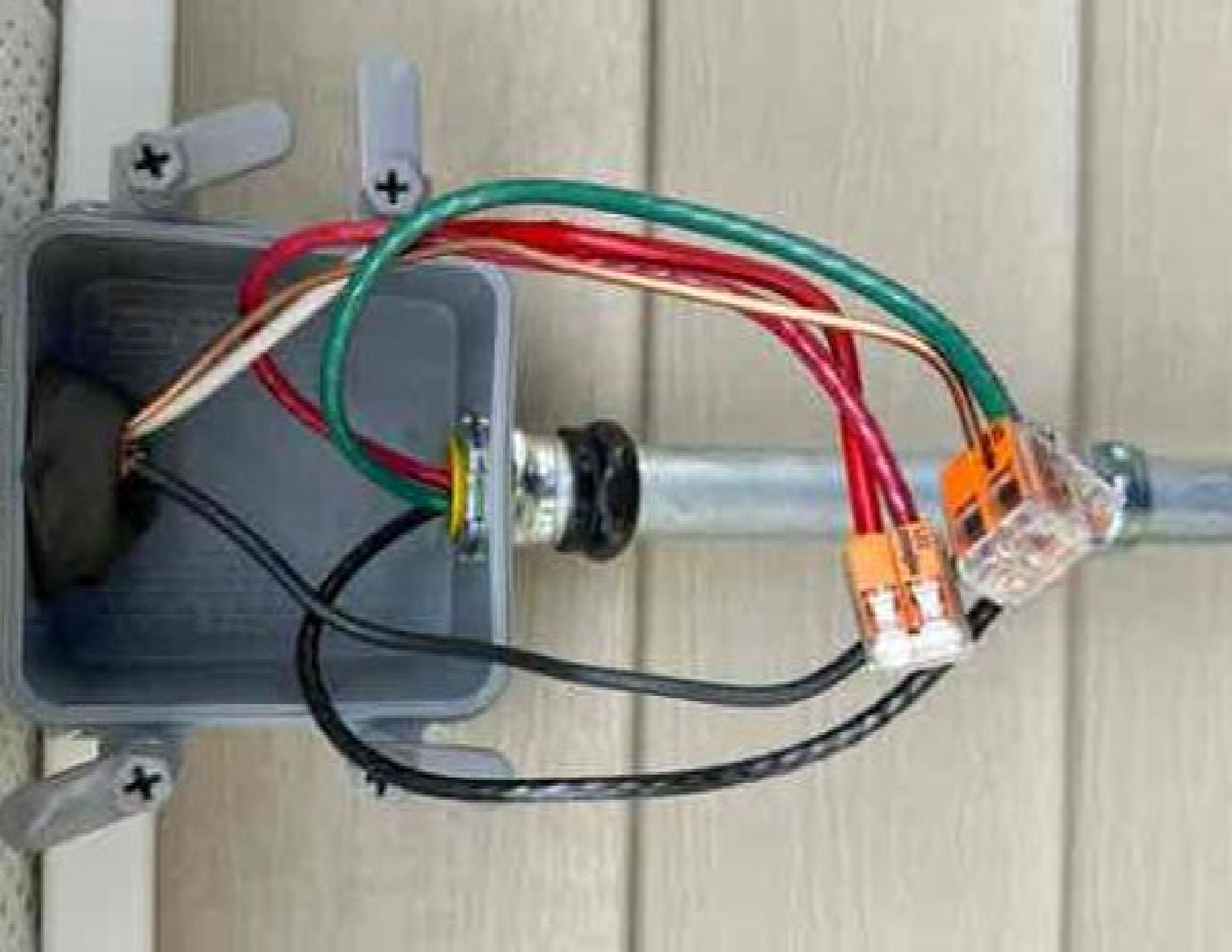
TERMINALS ON THE LINE AND  
LOAD SIDES MAY BE ENERGIZED  
IN THE OPEN POSITION





63 64 65 66 67 68 69 70 71 72 73 74 75







100% COTTON MADE IN AMERICA







NIM-B 10/2  
**250 ft indoor**  
Copper Building Wire



NIM-B 10/2  
**250 ft indoor**  
Copper Building Wire



NIM-B 10/2









NIM-B 10/2  
250 ft indoor  
Copper Building Wire



NIM-B 10/2  
250 ft indoor  
Copper Building Wire



NIM-B 10/2





100















VT  
LOW

THYRISTOR RECTIFIER QM1100  
100V 10A



# Update IQ Gateway Software

IQ Gateway 2023281465583



IQ Gateway successfully connected to Enphase Cloud and Installer Toolkit



IQ Gateway must be connected to the Enphase Cloud via both Cellular modem and Wi-Fi Ethernet for Enphase Energy System commissioning.

## IQ Gateway Connectivity Status

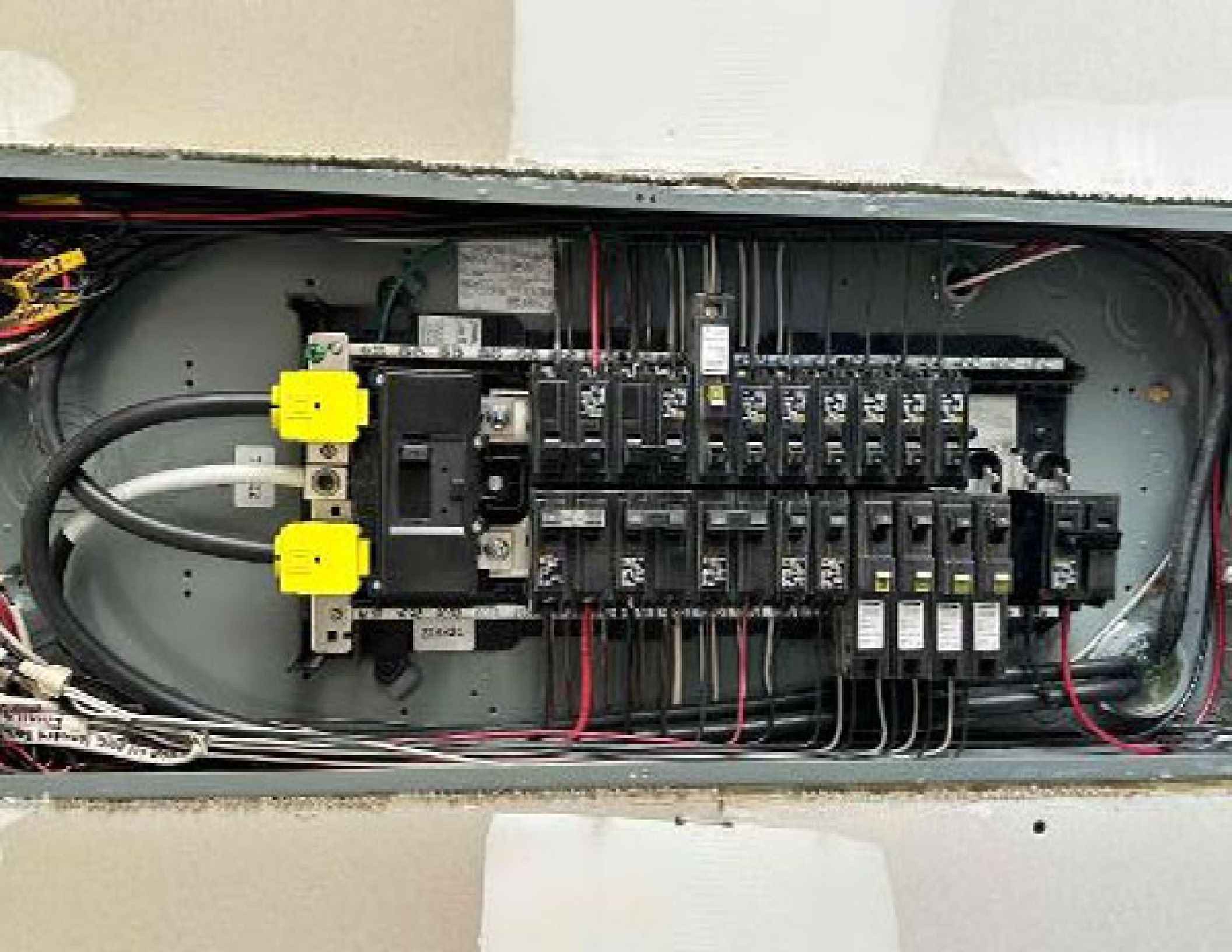


Wi-Fi



Ethernet





















Private  
Residence







BLUE RAVEN  
EST. 1988

BOURNS













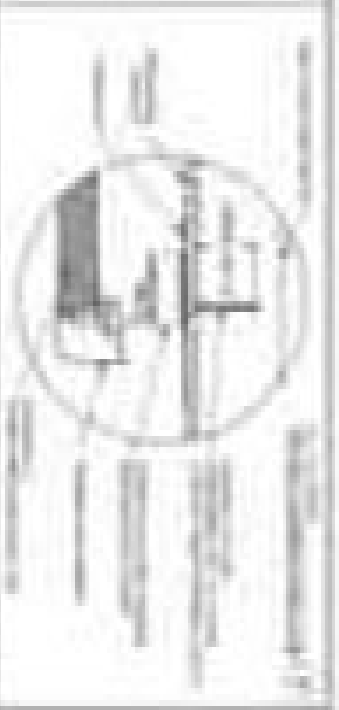




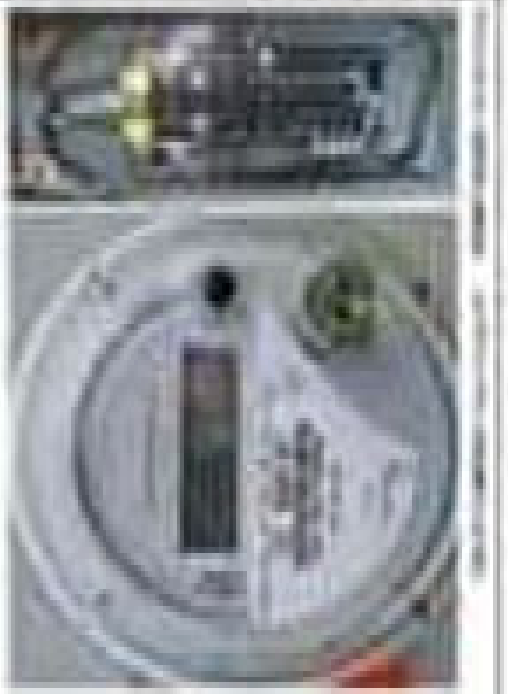




1. **IDENTIFICATION**  
 2. **DESCRIPTION**  
 3. **CLASSIFICATION**  
 4. **CONCLUSION**



1. **IDENTIFICATION**  
 2. **DESCRIPTION**  
 3. **CLASSIFICATION**  
 4. **CONCLUSION**



1. **IDENTIFICATION**  
 2. **DESCRIPTION**  
 3. **CLASSIFICATION**  
 4. **CONCLUSION**

1. **IDENTIFICATION**  
 2. **DESCRIPTION**  
 3. **CLASSIFICATION**  
 4. **CONCLUSION**















960

250VAC 20A  
79°C 2042





**BLUE RAVEN**

Since 1988

**ELECTRICIAN**











## IQ GATEWAY 1

### IQ Gateway

202329146583

### IQ Microinverters & Array

✓ Scanned 9/9

✓ Detected 9/9

✓ Communicating 9/9

✓ Array created 1

✓ Producing power 9/9

⚠ Profile set 0/9 (SEE 15-47 default 2015-1.0.11)

(Please visit the grid profiles to associate to all microinverters.)

[Add site notes and pictures](#)