





95
B
95 OLD FIELD LOOP



REC

REC N-Peak 3 Black Series

REC400NP3 Black

Serial Number: FBB-2009917219

Phone: +65 6495 9228

www.recgroup.com

| | |
|--------------------------------------|-------------------|
| Power Output (Pmax) | 400 W |
| Watt Class Sorting | 0/+10 W |
| Power Production Tolerance | +/- 3 % |
| Rated Voltage (Vmpp) | 37.6 V |
| Rated Current (Impp) | 10.64 A |
| Open Circuit Voltage (Voc) (+/- 3%) | 45.0 V |
| Short Circuit Current (Isc) (+/- 3%) | 11.39 A |
| Maximum System Voltage (Vsys) | 1000 V |
| Maximum Series Fuse (DC) (UL) | 25 A |
| Maximum Series Fuse (DC) (IEC) | 25 A |
| Design Load | +4666 / -2666 Pa* |
| Maximum Test Load | +7000 / -4000 Pa* |

(Values at STC: 1000 W/m² AM 1.5, cell temp 25°C)



Intertek
5017774

- Conforms to UL Std. 61730-1/-2
- Certified to CSA Std. C22.2#61730-1
- UL Fire Rating Type 2*

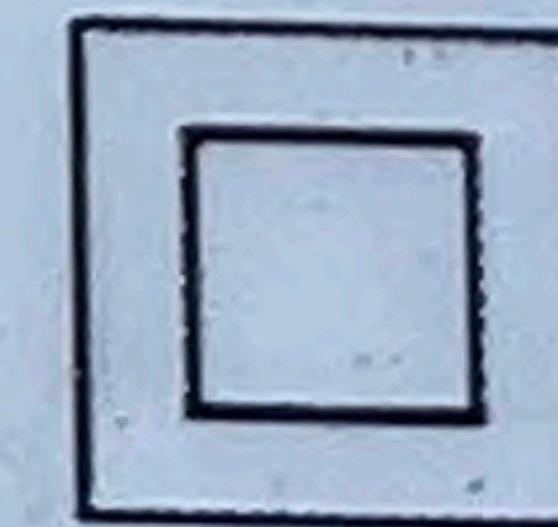


- IEC 61215
- IEC 61730



See installation manual for *) mechanical installation requirements and +) installation requirements to achieve a specified system fire class

Manufactured: 23.12.2022



Warning electrical hazard. This module produces electricity when exposed to light.
CAUTION: DO NOT DISCONNECT UNDER LOAD

Avertissement: Risque de choc électrique. Ce module solaire produit de l'électricité lorsqu'il est exposé à la lumière.

ATTENTION: NE PAS DECONNECTER SOUS TENSION

For field connections, use min. 4 mm² (12 AWG) UL PV wires insulated for a min. of 90°C

Made in Singapore by REC SOLAR PTE. LTD.

20 TUAS SOUTH AVENUE 14, SINGAPORE 637312, SINGAPORE

EU/Europe Contact: REC Solar EMEA GmbH

Balanstr. 71a, 81541 Munich, Germany, Tel: +49 (0)89-442-38590

For other regions see: www.recgroup.com/contact









17
16
15
14
13
12
11
10
9
8
7
6
5
4
3
2
1

5
4
3
2
1



U.S. Pat. D002771
PAT. APPL. PTA. 13,580

TOUGH
BLADE

FRIBBES

25 FT
IN



UL
CERTIFIED
SAFETY US-CA
E486080

+ -

840-00385-12
100VDC 20A
+79°C 2321

UL
CERTIFIED
SAFETY US-CA
E486080

035

840-00388-17
250VAC 20A
+79°C 2243

ROHS

1 SU

+DC-

AC

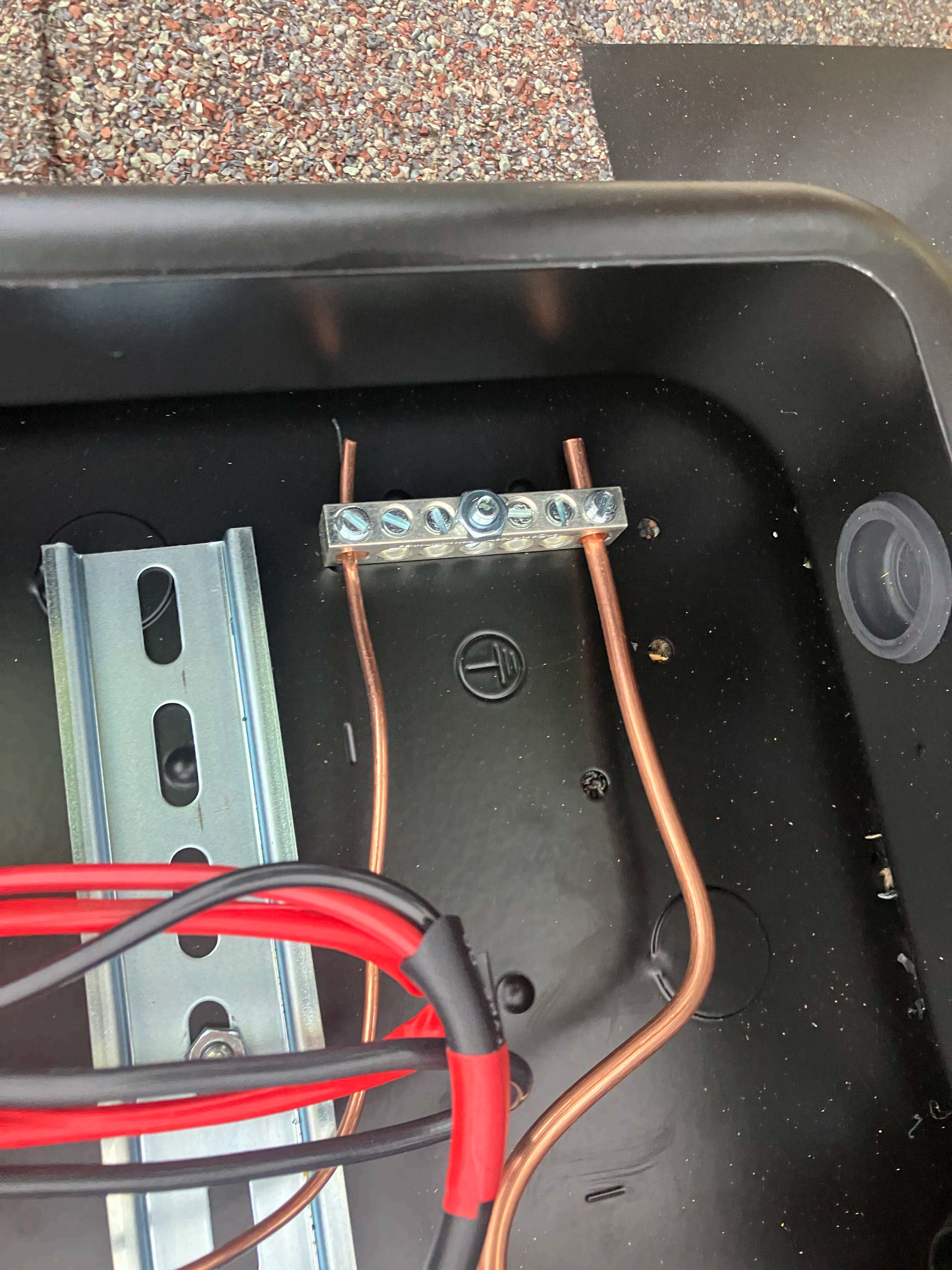


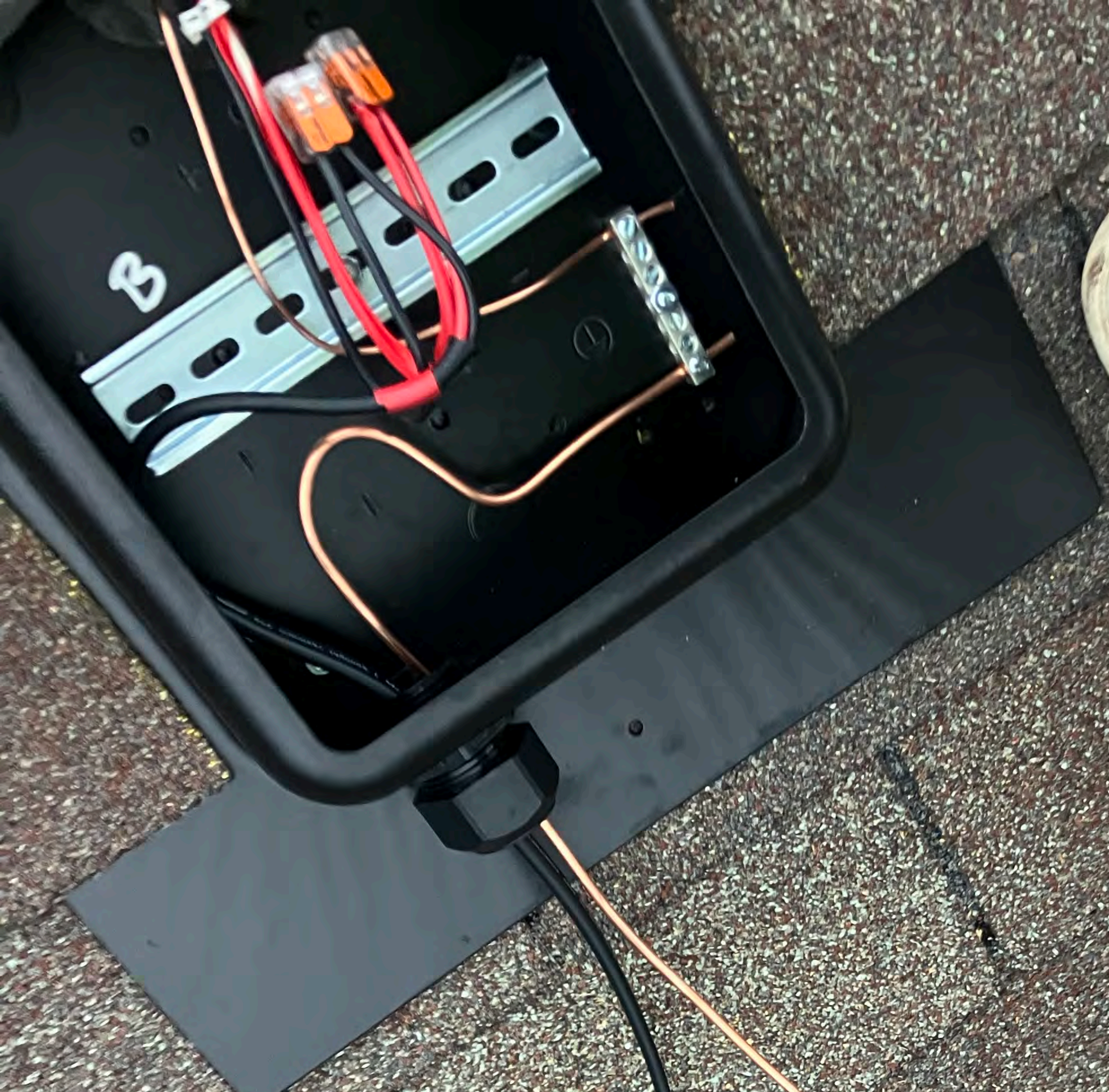


WAGO
Cu 1,6/2/2,6φ
JET 30A 300V
12
PS E
JET
H

1-1

+



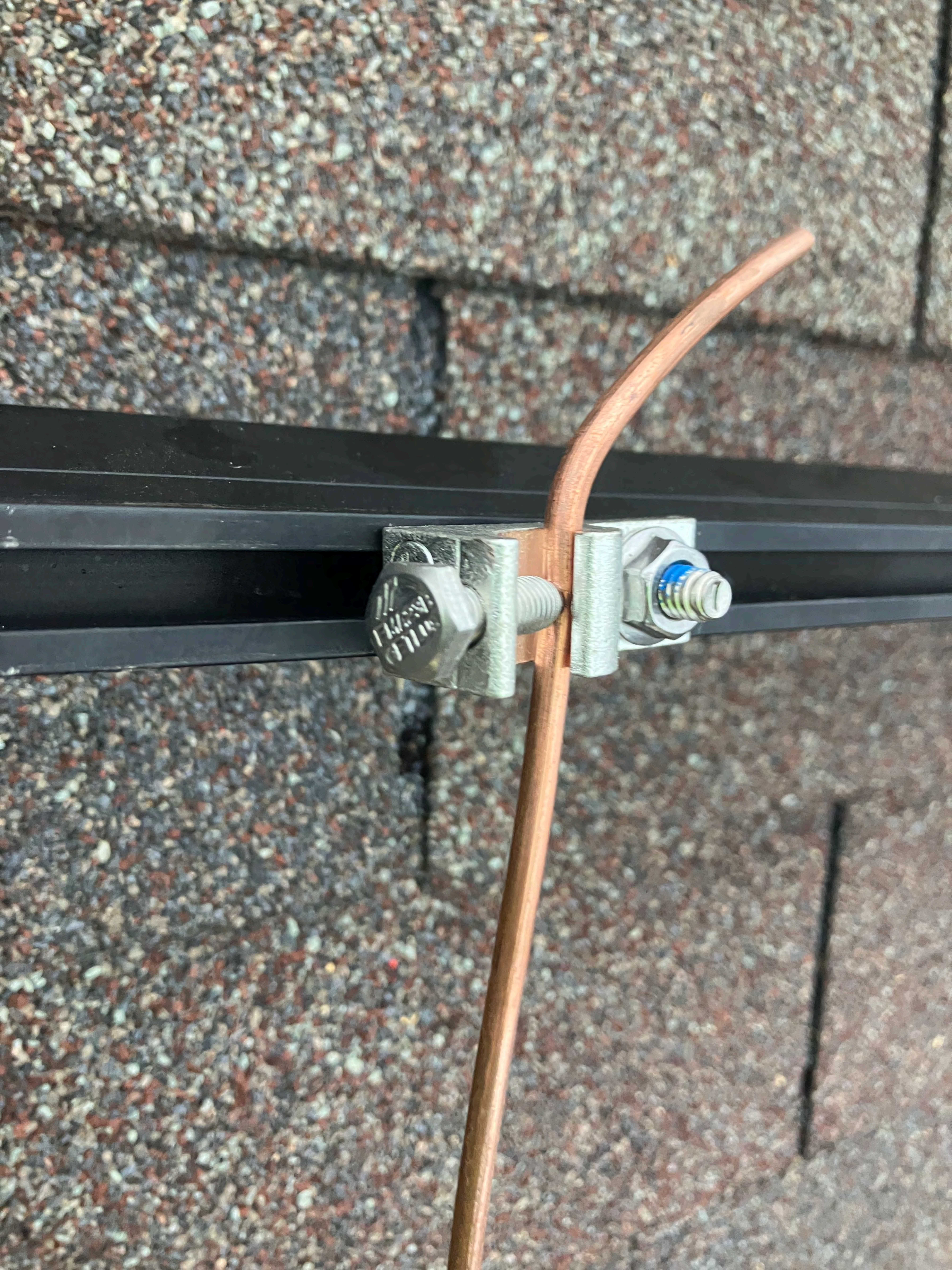










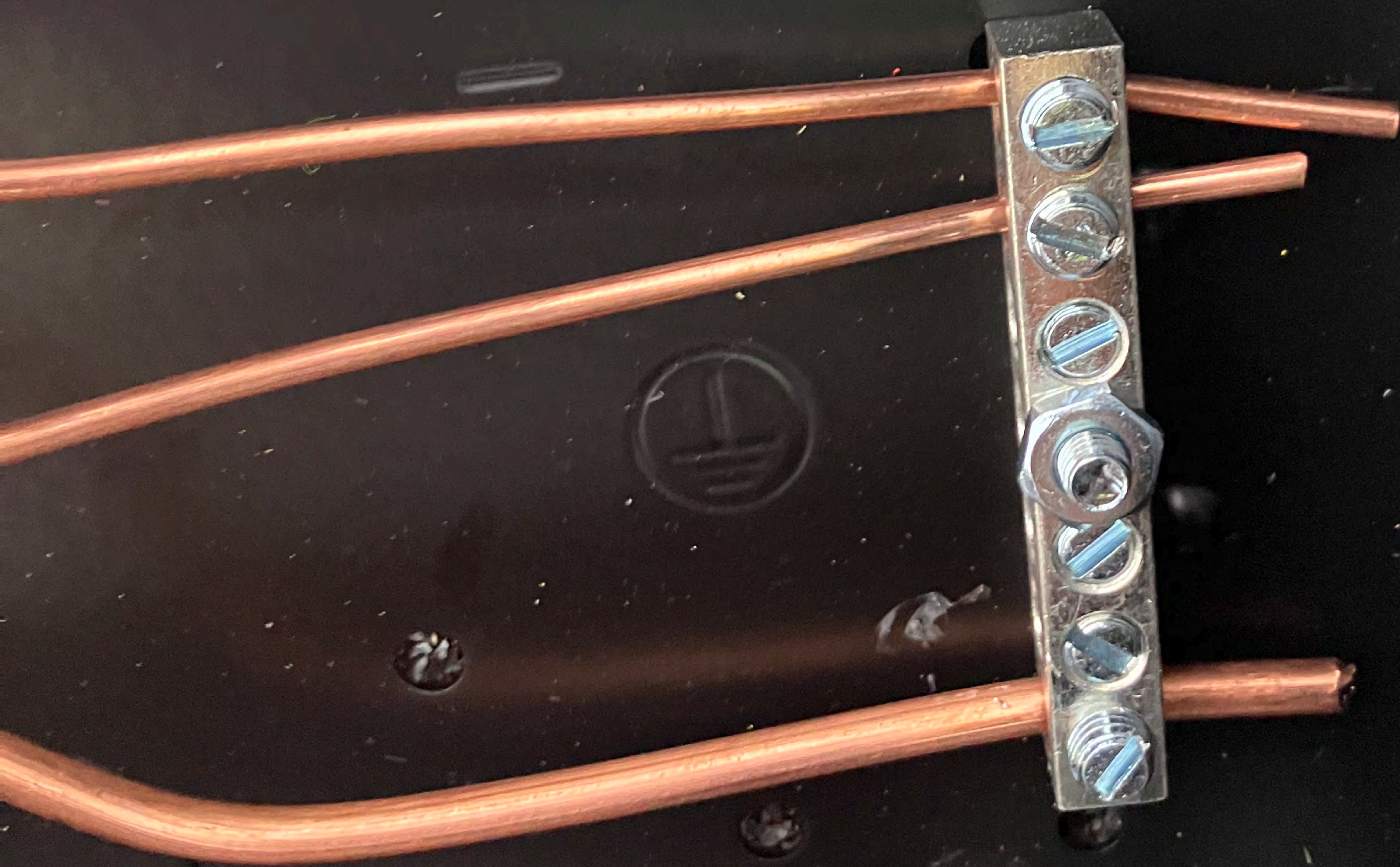
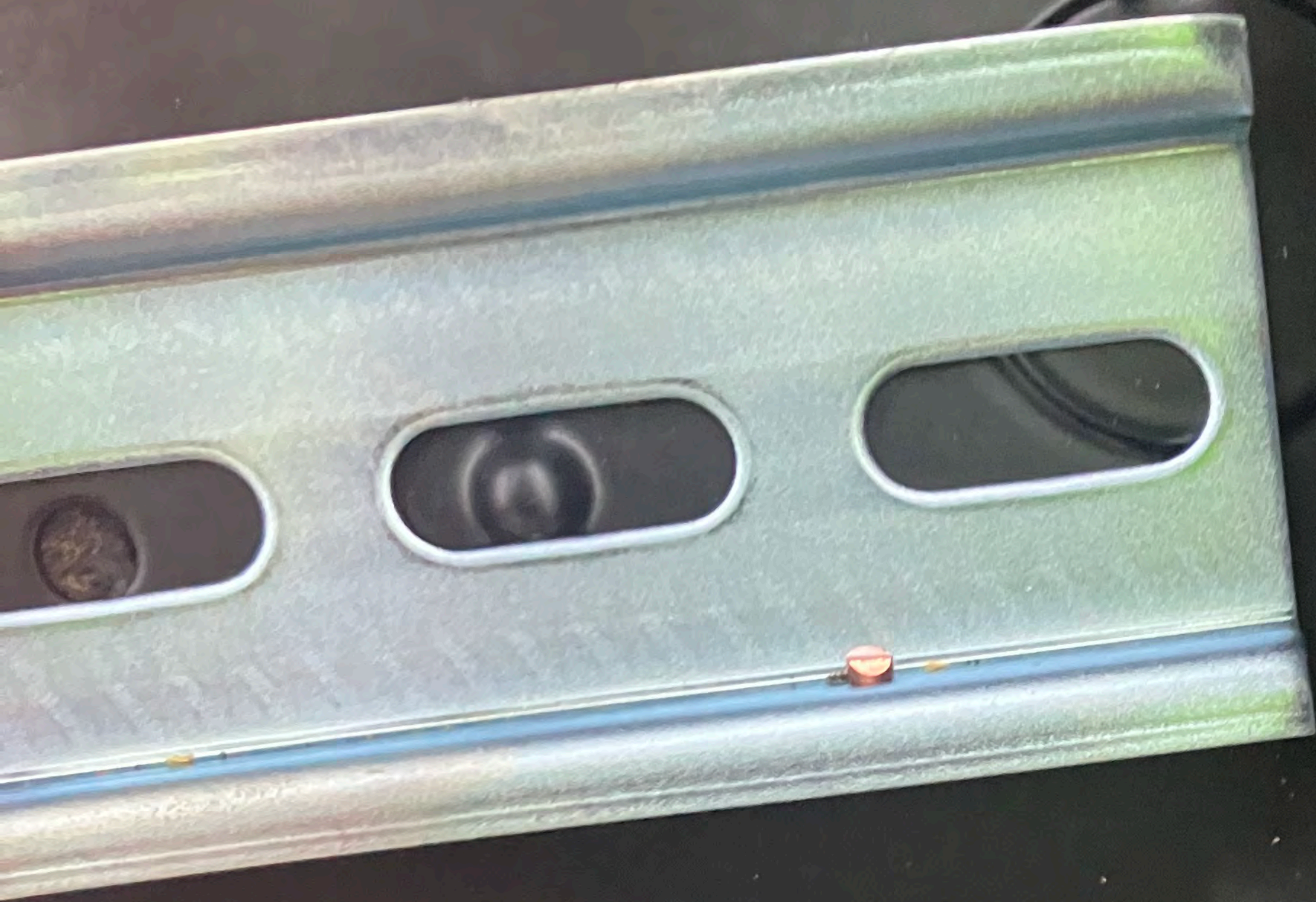


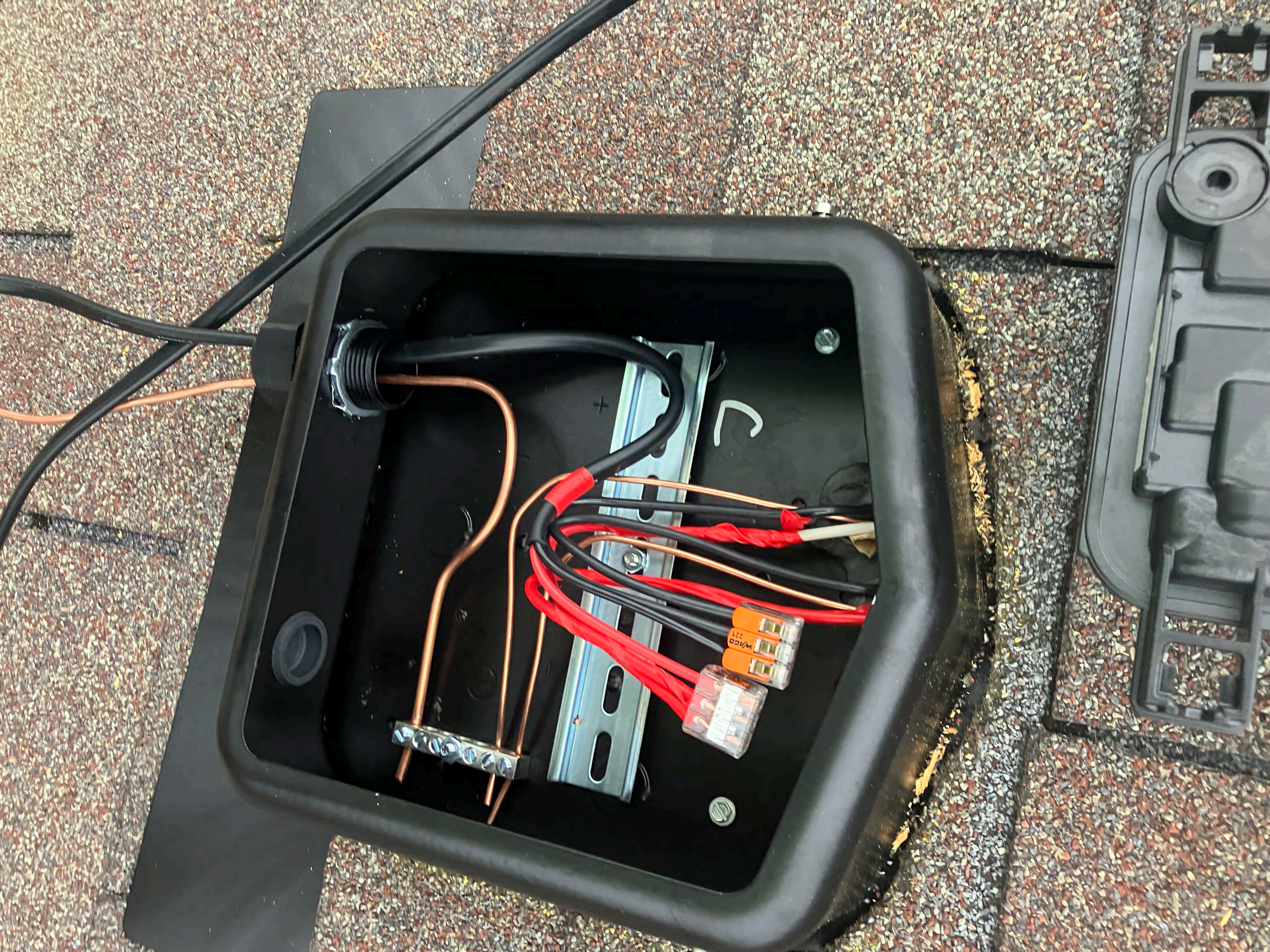




W/AGD
221

C
1





C



www.rstcenterprises.com

Intertek
3134037

ETL

Max Ratings: 600 VDC/11.5 AMPS; 240 VAC/60 AMPS; Short circuit 10KA, Ambient Temp 75°C
01 02 03 04 0799 Series 0766-41AD
Refer to the instruction manual for terminal torque information.

WARNING

⚠

PHOTOVOLTAIC SYSTEMS, KEEP OUT!
PHOTOVOLTAIC SYSTEMS ARE NOT TO BE SERVICED BY UNTRAINED PERSONNEL.
ALWAYS DISCONNECT ALL PHOTOVOLTAIC SYSTEMS BEFORE WORKING ON ANY ELECTRICAL COMPONENT.
DISCONNECT ALL PHOTOVOLTAIC SYSTEMS BEFORE WORKING ON ANY ELECTRICAL COMPONENT.
CAUTION: BEFORE REMOVING OR REPLACING ANY ELECTRICAL COMPONENT, DISCONNECT ALL PHOTOVOLTAIC SYSTEMS FROM THE PHOTOVOLTAIC SYSTEM.
CAUTION: BEFORE REMOVING OR REPLACING ANY ELECTRICAL COMPONENT, DISCONNECT ALL PHOTOVOLTAIC SYSTEMS FROM THE PHOTOVOLTAIC SYSTEM.

AVERTISSEMENT

HAUT TENSION, GARDEZ À L'ÉCART! RISQUE DE CHOC ÉLECTRIQUE!
LES SYSTÈMES PHOTOVOLTAÏQUES NE DOIVENT ÊTRE SERVICÉS QUE PAR DES TECHNICIENS QUALIFIÉS.
TOUTES LES OPÉRATIONS DE MAINTENANCE DOIVENT ÊTRE RÉALISÉES APRÈS AVOIR DÉCONNECTÉ LE SYSTÈME PHOTOVOLTAÏQUE.
AVANT DE RÉPARER, REMplacer ou retirer n'importe quel composant électrique, DÉCONNECTEZ TOUJOURS LE SYSTÈME PHOTOVOLTAÏQUE.
AVERTISSEMENT: ÉVITER DE TOUCHER TOUTES LES PARTIES ÉLECTRIQUES ET MÉCANIQUES.
ÉVALUEZ TOUJOURS LE RISQUE DE CHOC ÉLECTRIQUE ET DE BRÛLURE.
NE PAS TOUCHER LES PARTIES ÉLECTRIQUES.
NE PAS TOUCHER LES PARTIES MÉCANIQUES.



R.S.T.C. Entreprises
Patent No