









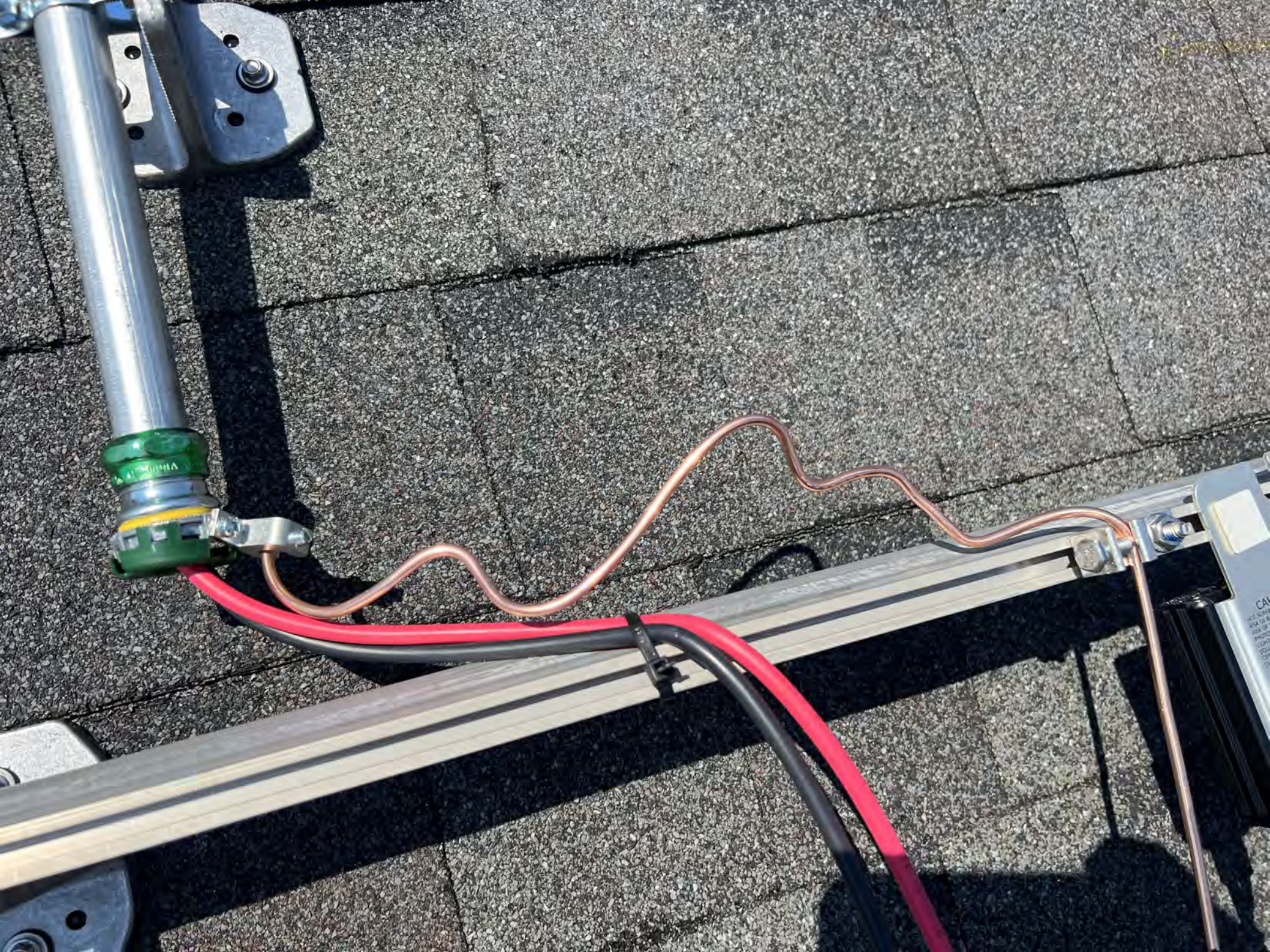




Do NOT use this device for anything other than the intended purpose.
Do NOT use this device for anything other than the intended purpose.
Do NOT use this device for anything other than the intended purpose.

CAUTION
WARNING
DO NOT TOUCH THE SURFACE OF THE DEVICE
DO NOT TOUCH THE SURFACE OF THE DEVICE
DO NOT TOUCH THE SURFACE OF THE DEVICE

CAUTION
WARNING
DO NOT TOUCH THE SURFACE OF THE DEVICE
DO NOT TOUCH THE SURFACE OF THE DEVICE
DO NOT TOUCH THE SURFACE OF THE DEVICE







1000V
90°C
We1
90°C
pub
110
CAUTION

HOT SURFACES - TO REDUCE THE RISK OF BURNS - DO NOT TOUCH. RISK OF ELECTRIC SHOCK WHEN THE PHOTOVOLTAIC ARRAY IS EXPOSED TO LIGHT, IT SUPPLIES A DC VOLTAGE TO EQUIPMENT. COVER PV MODULE WITH EQUIPMENT MATERIAL BEFORE CONNECTING OR DISCONNECTING. ZERO CURRENT FAULT, ZERO VOLTAGE FAULT.

WARNING
SYSTEM ARE

Do Not
Remove

1766C4C5-06



Intertek
4004590



SolarEdge Technologies Ltd.
SolarEdge Technologies GmbH/
Werner-Eckert-Straße 6/81829 Munich/Germany

CAUTION

HOT SURFACES-TO REDUCE THE RISK OF BURNS-DO NOT TOUCH. RISK OF ELECTRIC SHOCK-WHEN THE PHOTOVOLTAIC ARRAY IS EXPOSED TO LIGHT, IT SUPPLIES A DC VOLTAGE TO EQUIPMENT. COVER PV MODULE WITH OPAQUE MATERIAL BEFORE CONNECTING OR DISCONNECTING THIS OPTIMIZER. DURING FAULT, ZERO CURRENT IS SOURCED INTO DC ARRAY BY CONVERTER.

SolarEdge Technologies Ltd.
Power Optimizer

Solaredge Technologies GmbH/
Werner-Eckert-Straße 6/81829
Munich/Germany

WARNING

ELECTRIC SHOCK HAZARD. THE DC CONDUCTORS OF THIS PHOTOVOLTAIC SYSTEM ARE UNGROUNDED AND MAY BE ENERGIZED.

AVERTISSEMENT

RISQUE DE CHOC ELECTRIQUE: QUAND LE CHAMP PHOTOVOLTAIQUE EST EXPOSE A LA LUMIERE, UNE TENSION CC EST FOURNIE A CET EQUIPEMENT. SURFACES CHAUDES: NE PAS TOUCHER, AFIN DE REDUIRE LES RISQUES DE BRULURES LE COURANT DE RETOUR INJECTE PAR LE CONVERTISSEUR EN CAS DE DEFAILLANCE DANS LE MODULE PV EST TOUJOURS NUL.

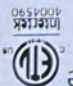
WARNING ELECTRIC SHOCK HAZARD. THE DC CONDUCTORS OF THIS PHOTOVOLTAIC
ARE UNGROUNDED AND MAY BE ENERGIZED.


AVERTISSEMENT
RISQUE DE CHOC ELECTRIQUE: QUAND LE CHAMP
PHOTOVOLTAIQUE EST EXPOSE A LA LUMIERE, UNE
TENSION CC EST FOURNIE A CET EQUIPEMENT.
SURFACES CHAUDES: NE PAS TOUCHER, AFIN DE
REDUIRE LES RISQUES DE BRULURES LE COURANT
DE RETOUR INJECTE PAR LE CONVERTISSEUR EN
CAS DE DEFAILLANCE DANS LE MODULE PV EST
TOUJOURS NUL.

CAUTION HOT SURFACES-TO REDUCE THE
RISK OF BURNS-DO NOT TOUCH.
PHOTOVOLTAIC ARRAY IS EXPOSED TO
A DC VOLTAGE TO
RIGHT, IT SUPPLIES A DC VOLTAGE WITH
EQUIPMENT. COVER PV MODULE WITH
SOME MATERIAL BEFORE CONNECTING OR DISCONNECTING THIS OPTIMIZER.
ING FAULT, ZERO CURRENT IS SOURCED INTO DC ARRAY BY CONVERTER.

SolarEdge Technologies Ltd.
Power Optimizer
SolarEdge Technologies GmbH/
Werner-Eckert-Strabe 6/81829
Munich/Germany

Do Not
Remove

 INTELTEK
4004590



 1766C4C5-06

SolarEdge Technologies Ltd.
SolarEdge Technologies GmbH/
Werner-Eckert-Strabe 6/81829
Munich/Germany















ERKOORDE
03-315



PHOTOVOLTAIC POWER SOURCE













PHOTOVOLTAIC POWER SOURCE







PROTECTIVE POWER SOLUTIONS



PHOTOVOLTAIC POWER SOURCE



PHOTOVOLTAIC POWER SOURCE







01766855-48

Do Not Remove

1766855-48

SolarEdge Technologies Ltd.
SolarEdge Technologies GmbH
Werner-Exel-Strasse 6/81829
Munich/Germany



SolarEdge Technologies Ltd.
Power Optimizer

SolarEdge Technologies GmbH/
Werner-Exel-Strasse 6/81829
Munich/Germany

CAUTION

HOT SURFACES-TO REDUCE THE RISK OF BURNS-DO NOT TOUCH. RISK OF ELECTRIC SHOCK-WHEN THE PHOTOVOLTAIC ARRAY IS EXPOSED TO LIGHT, IT SUPPLIES A DC VOLTAGE TO EQUIPMENT. COVER PV MODULE WITH OPAQUE MATERIAL BEFORE CONNECTING OR DISCONNECTING THIS OPTIMIZER. DURING FAULT, ZERO CURRENT IS SOURCED INTO DC ARRAY BY CONVERTER.

WARNING ELECTRIC SHOCK HAZARD. THE DC CONDUCTORS OF THIS PHOTOVOLTAIC SYSTEM ARE UNGROUNDED AND MAY BE ENERGIZED.

AVERTISSEMENT

RISQUE DE CHOC ELECTRIQUE. QUAND LE CHAMP PHOTOVOLTAIQUE EST EXPOSE A LA LUMIERE, UNE TENSION CC EST FOURNIE A CET EQUIPEMENT. SURFACES CHAUDES: NE PAS TOUCHER, AFIN DE REDUIRE LES RISQUES DE BRULURES LE COURANT DE RETOUR INJECTE PAR LE CONVERTISSEUR EN CAS DE DEFAILLANCE DANS LE MODULE PV EST TOUJOURS NUL.







461

440W/5-60V/15A
8-60V/14.5A
1V
SM1323-01766E6E5-48
S440-1GM4MRM
NA03
Mexico

MADE IN: Mexico



Do Not Remove



17658665-48

SolarEdge Technologies Ltd.
SolarEdge Technologies GmbH
Werner-Eckert-Straße 6/81829
Munich/Germany



SolarEdge Technologies Ltd.
Power Optimizer

SolarEdge Technologies GmbH/
Werner-Eckert-Straße 6/81829
Munich/Germany

CAUTION
HOT SURFACES TO REDUCE THE RISK OF BURNS DO NOT TOUCH. RISK OF ELECTRIC SHOCK WHEN THE PHOTOVOLTAIC ARRAY IS EXPOSED TO LIGHT, IT SUPPLIES A DC VOLTAGE TO EQUIPMENT. COVER PV MODULE WITH OPAQUE MATERIAL BEFORE CONNECTING OR DISCONNECTING THIS OPTIMIZER DURING FAULT. ZERO CURRENT IS SOURCED INTO DC ARRAY BY CONVERTER.

WARNING ELECTRIC SHOCK HAZARD. THE DC CONDUCTORS OF THIS PHOTOVOLTAIC SYSTEM ARE UNGROUNDED AND MAY BE ENERGIZED.

AVERTISSEMENT

RISQUE DE CHOC ELECTRIQUE: QUAND LE CHAMP PHOTOVOLTAIQUE EST EXPOSE A LA LUMIERE, UNE TENSION CC EST FOURNIE A CET EQUIPEMENT. SURFACES CHAUDES: NE PAS TOUCHER, AFIN DE REDUIRE LES RISQUES DE BRULURES LE COURANT DE RETOUR INJECTE PAR LE CONVERTISSEUR EN CAS DE DEFAILLANCE DANS LE MODULE PV EST TOUJOURS NUL.



Do not disconnect under load

1-3035











TOP TIER

TOP TIER
SOLAR SOLUTIONS

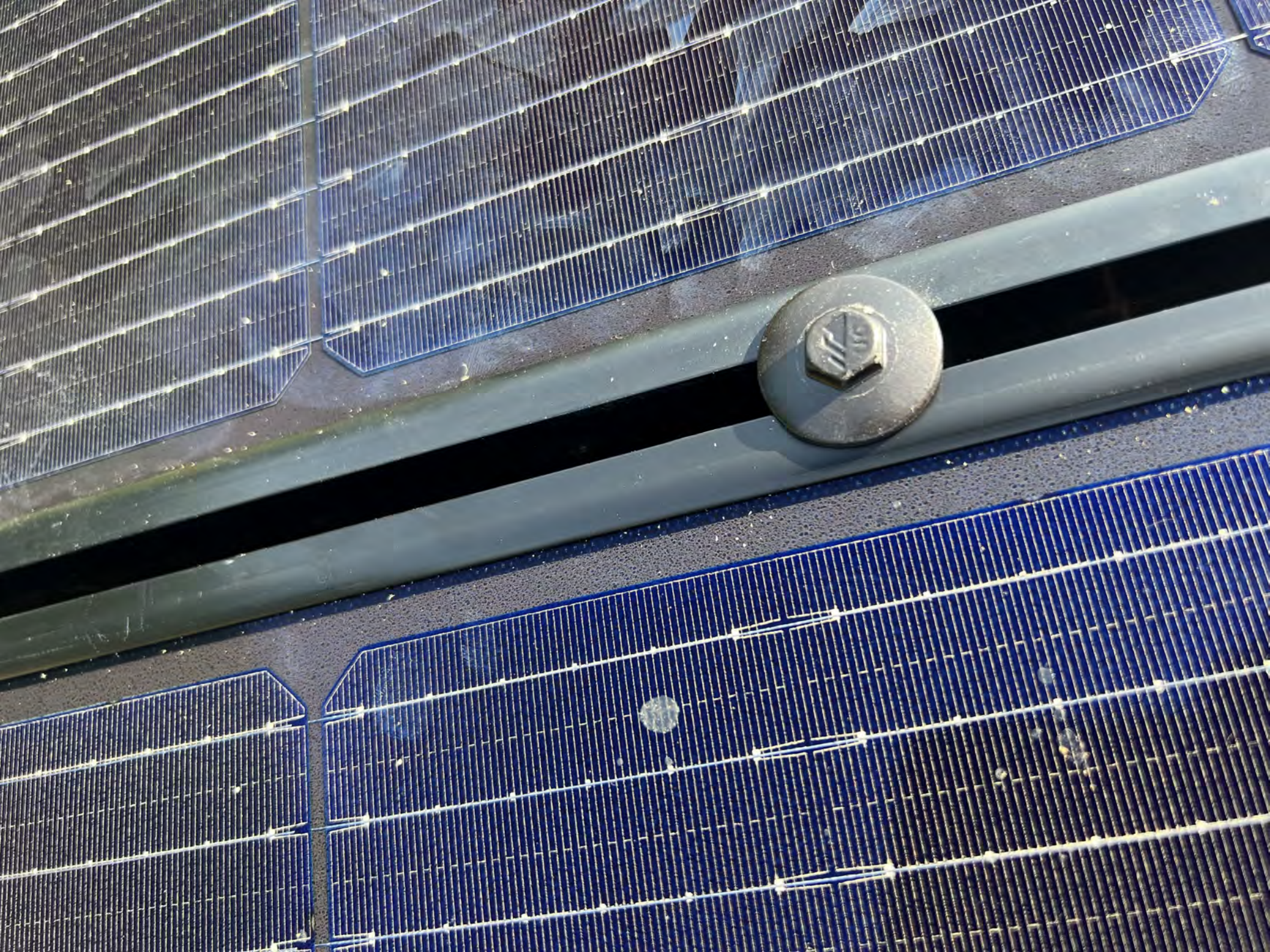
(855) 997-
OUR OFFICE IS IN
TO ONLY ON
AMERICAN











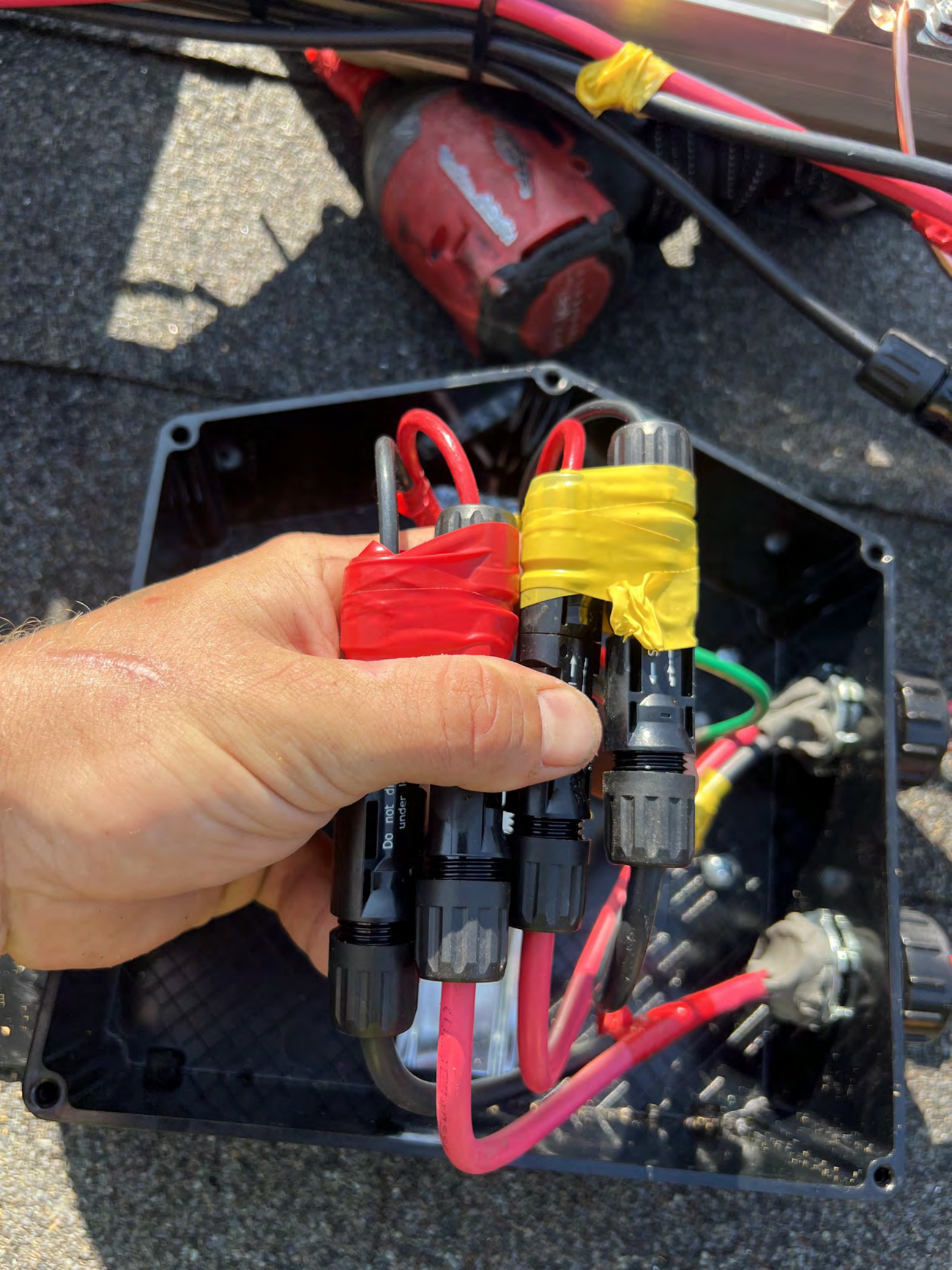


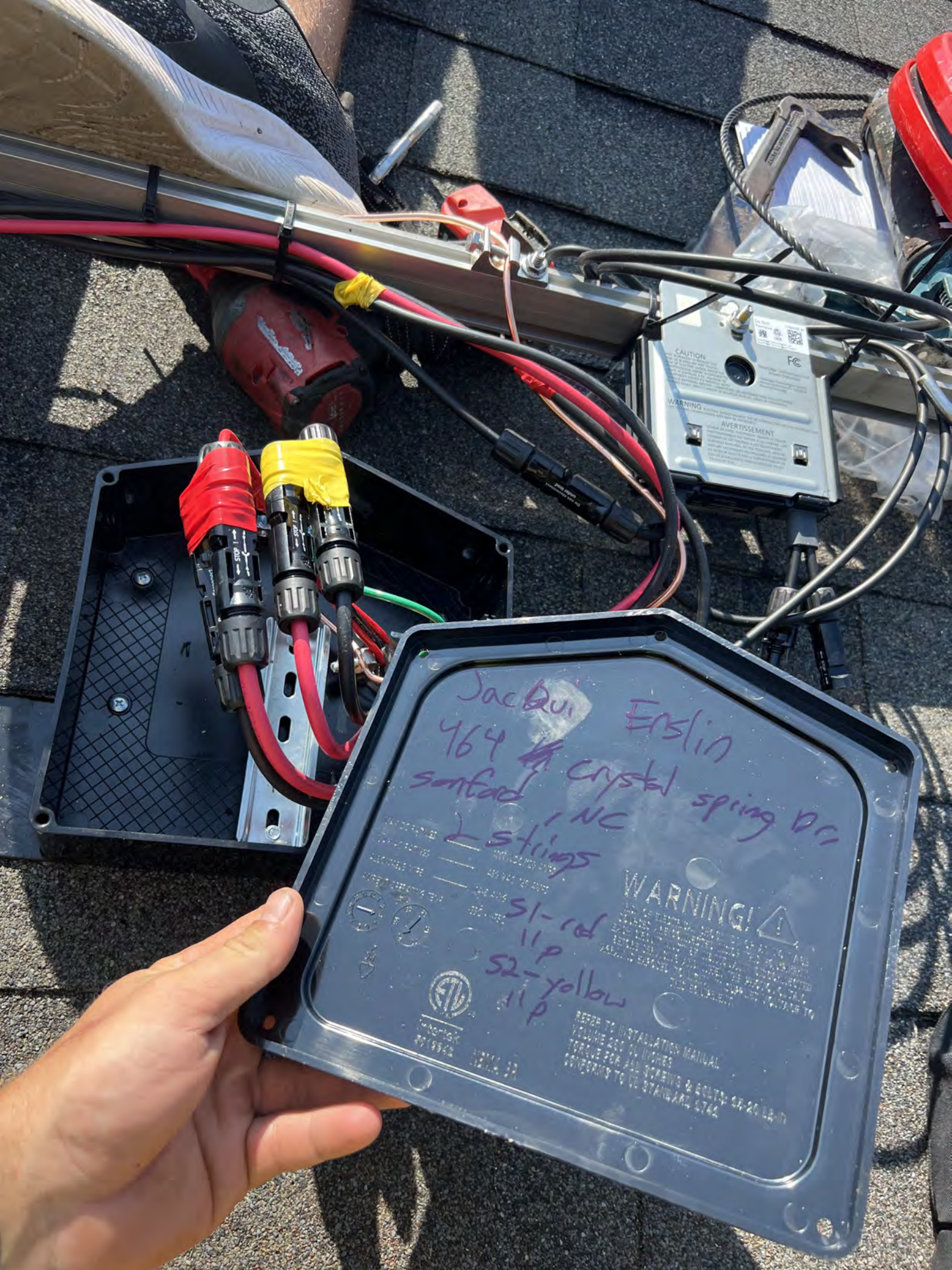












Jac Qui Enslin
464 Crystal Spring Dr
Sanford, NC
2 strings

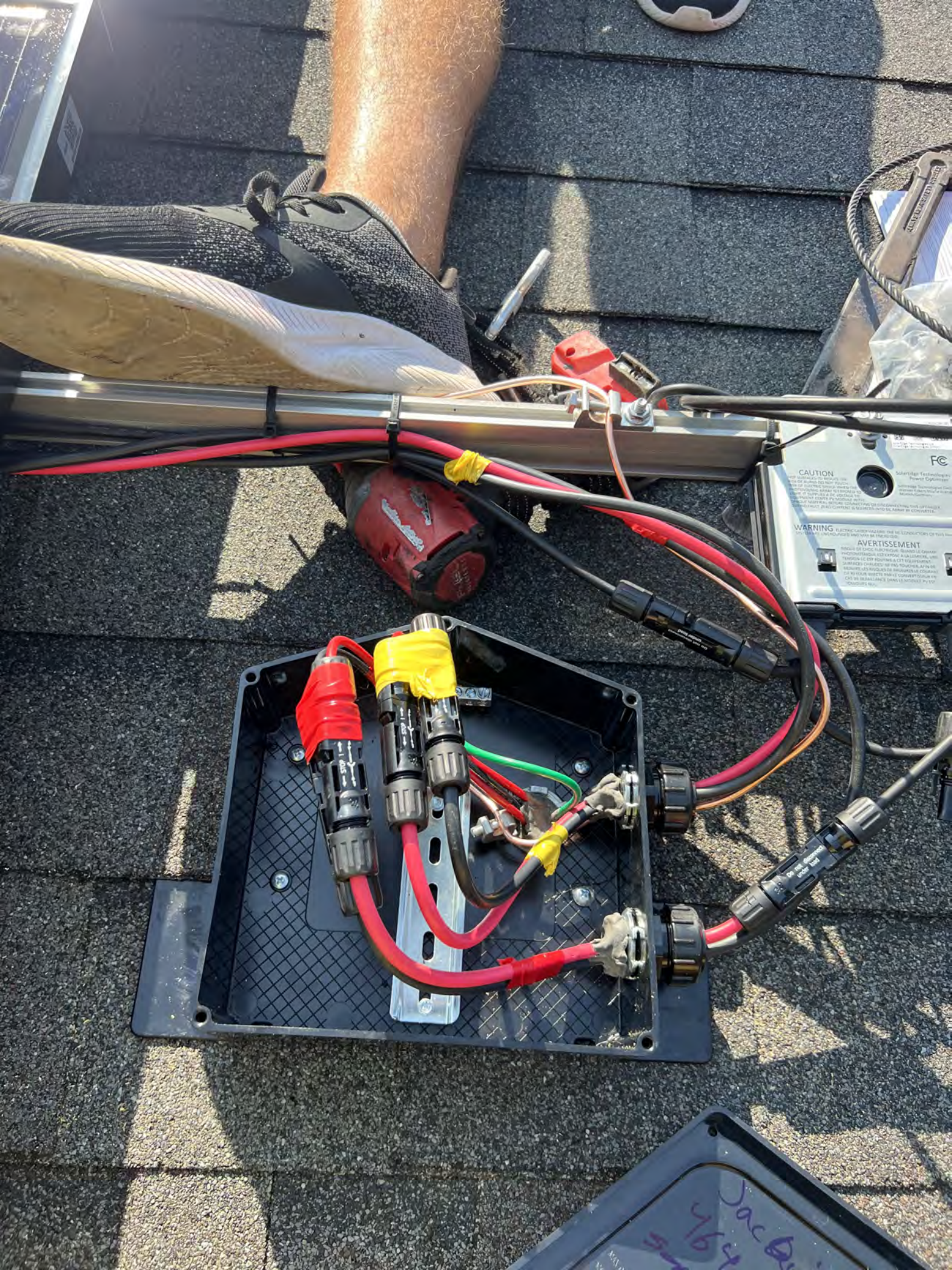
S1-red
11p
S2-yellow
11p

WARNING!
DO NOT TOUCH THE CONTACTS OR THE WIRING INSULATION. CONTACTS ARE HIGHLY CONDUCTIVE AND CAN CAUSE SEVERE ELECTRICAL SHOCK OR DEATH. ALWAYS DISCONNECT THE SYSTEM BEFORE WORKING ON THE WIRING. ALWAYS USE PROPER SAFETY PROCEDURES. ALWAYS WEAR YOUR SAFETY GEAR. ALWAYS USE THE CORRECT TOOLS AND TECHNIQUES. ALWAYS FOLLOW THE MANUFACTURER'S INSTRUCTIONS. ALWAYS USE THE CORRECT WIRING DIAGRAM. ALWAYS USE THE CORRECT WIRING COLORS. ALWAYS USE THE CORRECT WIRING GAUGE. ALWAYS USE THE CORRECT WIRING METHOD. ALWAYS USE THE CORRECT WIRING MATERIALS. ALWAYS USE THE CORRECT WIRING TERMINALS. ALWAYS USE THE CORRECT WIRING CONNECTIONS. ALWAYS USE THE CORRECT WIRING LABELS. ALWAYS USE THE CORRECT WIRING MARKINGS. ALWAYS USE THE CORRECT WIRING IDENTIFICATION. ALWAYS USE THE CORRECT WIRING DOCUMENTATION. ALWAYS USE THE CORRECT WIRING RECORDS. ALWAYS USE THE CORRECT WIRING ARCHIVES. ALWAYS USE THE CORRECT WIRING BACKUP. ALWAYS USE THE CORRECT WIRING RECOVERY. ALWAYS USE THE CORRECT WIRING RESTORATION. ALWAYS USE THE CORRECT WIRING MAINTENANCE. ALWAYS USE THE CORRECT WIRING INSPECTION. ALWAYS USE THE CORRECT WIRING TESTING. ALWAYS USE THE CORRECT WIRING MONITORING. ALWAYS USE THE CORRECT WIRING RECORDING. ALWAYS USE THE CORRECT WIRING REPORTING. ALWAYS USE THE CORRECT WIRING DOCUMENTATION. ALWAYS USE THE CORRECT WIRING ARCHIVES. ALWAYS USE THE CORRECT WIRING BACKUP. ALWAYS USE THE CORRECT WIRING RECOVERY. ALWAYS USE THE CORRECT WIRING RESTORATION. ALWAYS USE THE CORRECT WIRING MAINTENANCE. ALWAYS USE THE CORRECT WIRING INSPECTION. ALWAYS USE THE CORRECT WIRING TESTING. ALWAYS USE THE CORRECT WIRING MONITORING. ALWAYS USE THE CORRECT WIRING RECORDING. ALWAYS USE THE CORRECT WIRING REPORTING.



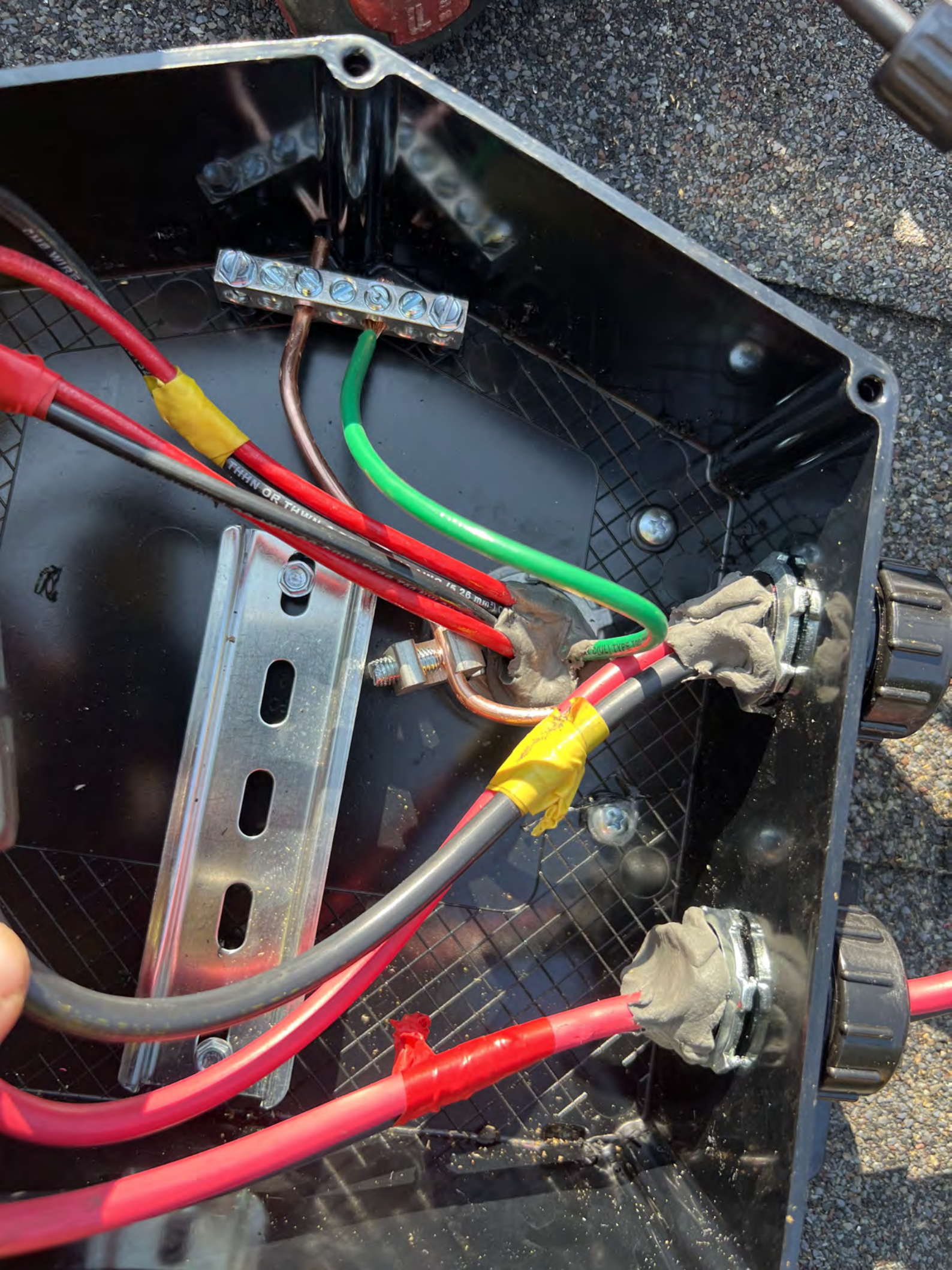
ETL
Intertek
9919942
12/14/11

REFER TO INSTALLATION MANUAL
FOR THE CORRECT TORQUE SPECIFICATIONS
FOR ALL SCREWS & BOLTS. 40-20 LBS IN
TORQUE TO UL STANDARD 6742



CAUTION
WARNING
AVERTISSEMENT

Jac B...
464
5th



A metal terminal block with six screws, used for connecting the green ground wire and other internal wiring.

A metal mounting bracket with three oval-shaped cutouts, used for securing the control box to a surface.

THAN OR THAN
26 mm²

A metal terminal connector with a grey fabric sleeve, used for connecting the red and grey power cable to the control box.

A metal terminal connector with a grey fabric sleeve, used for connecting the red and grey power cable to the control box.

46A



Model Number
Rated Maximum Power
Voltage at Pmax
Current at Pmax
Max. System Voltage
Max. Series overcurrent protective
device (where required) fuse rating
Standard test condition

Serial No **M230810-B0011**
MSE396SX9R
[W] **396** (-0/+3%)
[V] **46.2**
[A] **37.0**
[V] **11.24**
[A] **10.88**
1000




For field connections, use C1 only, 12AWG (US, CANADA) ...
Insulated for a minimum of 90°C rated for wet conditio
Welder radiation (where exposed). See installation m
details and compatibility. Avertissement Risque
produit des tensions élevées dans la lumière
choquer, brûler ou de provoquer la mort

Fire Rating : Type 1
Class of Equipment : Class II
Design Load : Minimum 30

Warning
pv module
junction
No p

464

MISSION SOLAR ENERGY 

Serial No **M230810-B0011**



Model Number	MSE395SX9R
Rated Maximum Power	[W] 395 (-0/+3%)
Open - Circuit Voltage	[V] 46.2
Voltage at Pmax	[V] 37.0
Short - Circuit Current	[A] 11.24
Current at Pmax	[A] 10.68
Max. System Voltage	[V] 1000
Max. Series overcurrent protective device (where required) fuse rating	[A] 20
Standard test condition	AM=1.5 E=1000W/m² Tc=25°C



For field connections, use Cu only, 12AWF (US, CANADA), 4mm² (EU, Asia) wires insulated for a minimum of 90°C, rated for wet conditions and resistant to ultra violet radiation (where exposed). See installation manual for PV connector details and compatibility. Avertissement Risque de choc électrique. Ce module produit des tensions élevées dans la lumière du soleil. Risque électrique peut





F.T.N.

SOLAR PV SYSTEM EQUIPPED WITH RAPID SHUTDOWN

TURN RAPID SHUTDOWN SWITCH TO THE "OFF" POSITION TO SHUT DOWN PV SYSTEM AND REDUCE SHOCK HAZARD IN THE AREA.

WARNING
ELECTRIC SHOCK HAZARD. TERMINALS ON THE LINE AND LOAD SIDES MAY BE ENERGIZED IN THE OPEN POSITION.

CAUTION:
MULTIPLE SOURCES OF POWER. THE SERVICE DISCONNECT IS LOCATED INSIDE OPPOSITE THE UTILITY METER.

AC DISCONNECT
PHOTOVOLTAIC SYSTEM POWER SOURCE:
RATED AC OUTPUT CURRENT: 20 AMPS
NOMINAL OPERATING AC VOLTAGE: 120 VOLTS

PHOTOVOLTAIC SYSTEM



CAUTION: SOLAR ELECTRIC SYSTEM CONNECTED

WARNING
DUAL POWER SUPPLY SOURCES: UTILITY GRID AND PV SOLAR ELECTRIC SYSTEM.

FOCUS AXR-SD
CENTRAL EMC
PHOTOVOLTAIC SYSTEM kWh METER

TERMINAL 101299



EATON

**SOLAR PV SYSTEM
EQUIPPED WITH
RAPID SHUTDOWN**



TURN RAPID SHUTDOWN SWITCH TO THE "OFF" POSITION TO SHUT DOWN PV SYSTEM AND REDUCE SHOCK HAZARD IN THE ARRAY

**RAPID SHUTDOWN
SWITCH FOR
SOLAR PV SYSTEM**

WARNING
ELECTRIC SHOCK HAZARD
TERMINALS ON THE LINE AND
LOAD SIDES MAY BE ENERGIZED
IN THE OPEN POSITION

CAUTION:
MULTIPLE SOURCES OF POWER
THE SERVICE DISCONNECT IS LOCATED
INSIDE OPPOSITE THE UTILITY METER

AC DISCONNECT
PHOTOVOLTAIC SYSTEM
POWER SOURCE

RATED AC OUTPUT CURRENT	20	AMPS
NOMINAL OPERATING AC VOLTAGE	240	VOLTS

solar edge **JHD wave**

DC DISCONNECT

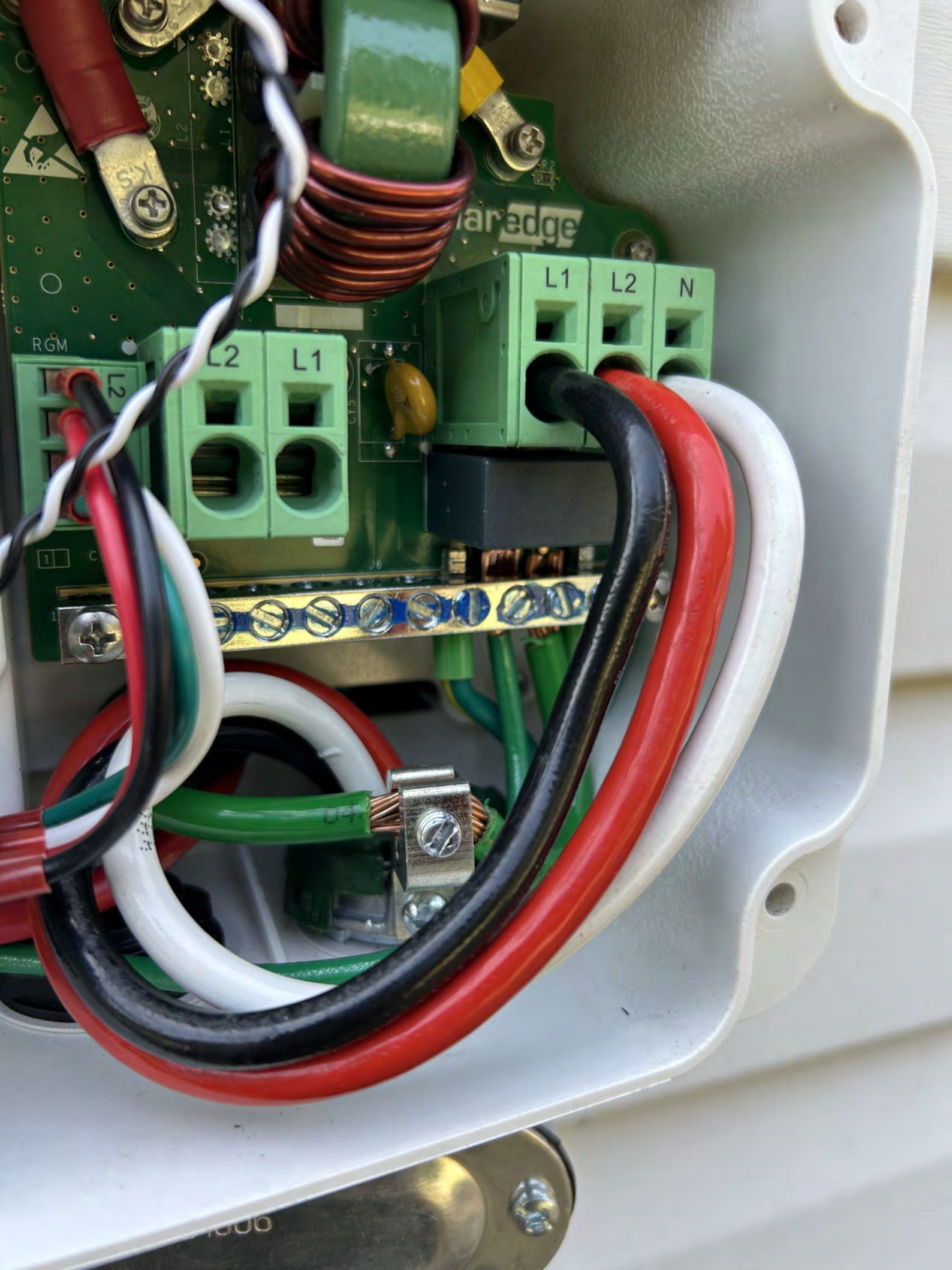
OFF ON

PV SYSTEM DC DISCONNECT

MAXIMUM VOLTAGE	600V
MAXIMUM CIRCUIT CURRENT	20A
MAXIMUM RATED OUTPUT CURRENT OF THE CHARGE CONTROLLER OR DC TO DC CONVERTER (IF INSTALLED)	

solar edge

PHOTOVOLTAIC POWER SOURCE



BAT-

PV+

PV-

13

IEC60947-3 VDE0660

AC21 10A

U 690V
50-60Hz

$\frac{230}{400}$
 $\frac{1}{2}$ | $\frac{1}{2}$

IP20

14

Made in Austria

ION

0
OFF

LOCK



600v ac B600
20-12 AWG 17Nm
20 amp RK

for use on
apable
more than
rms
max

Wire Cu 60.75 L

SN: SV1523-1249604
MCG-LB-009977
ID-240C-B

Plus Meter



BAT+

BAT

2nd Inv. SMRT EV

2nd Inv. Battery

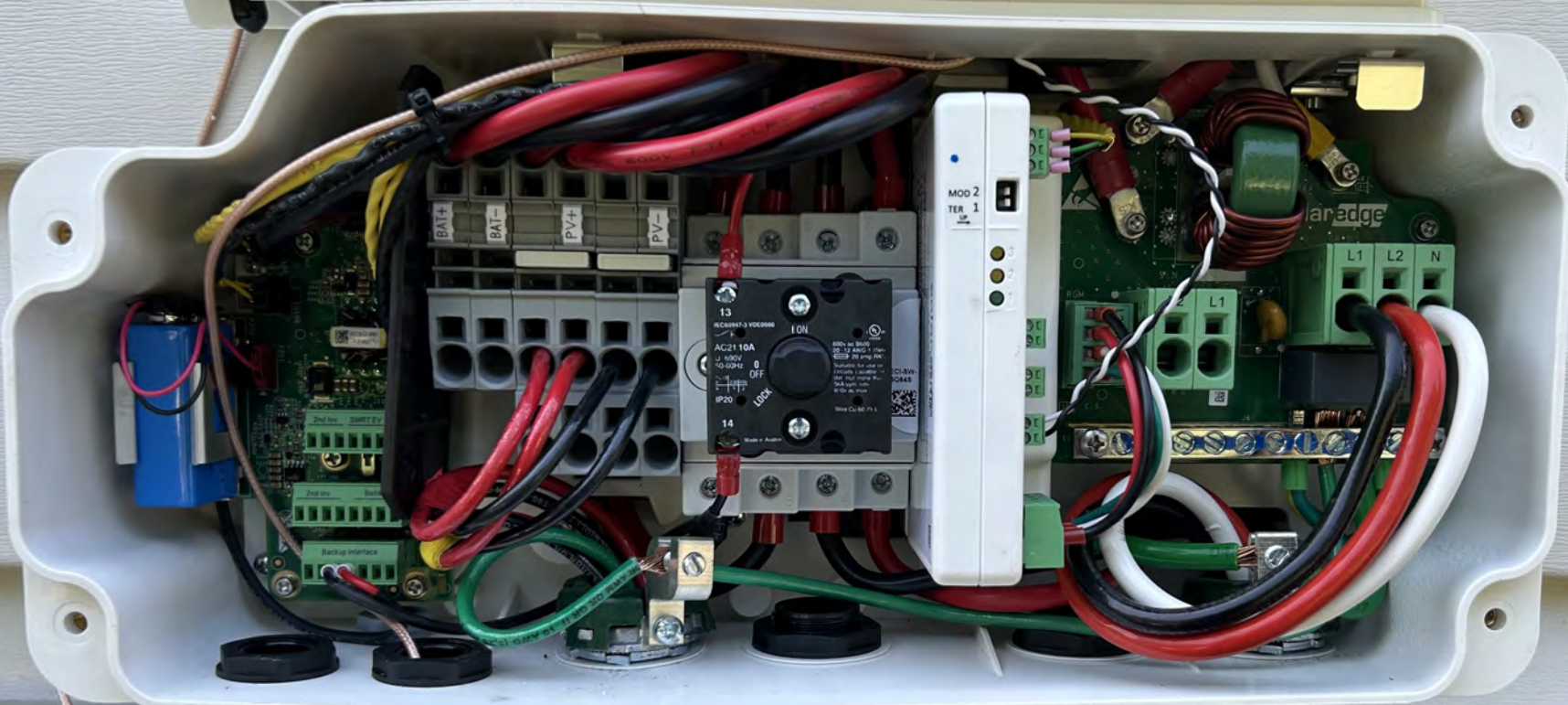
Backup Interface

solar edge
DC5150

SEECB-CX-00007
ALF 4521-VJ

solar edge

HD wave



IN THE OPEN POSITION

05-215

CAUTION:

MULTIPLE SOURCES OF POWER
THE SERVICE DISCONNECT IS LOCATED
SIDE OPPOSITE THE UTILITY METER

pvlabs.com 3-42

AC DISCONNECT

PHOTOVOLTAIC SYSTEM
POWER SOURCE

RATED AC
OUTPUT CURRENT **32.0** AMPS

NOMINAL OPERATING
AC VOLTAGE **240** VOLTS

pvlabs.com

03-306

EATON

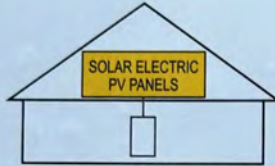
General Duty Safety Switch
Interrupteur de sécurité à usage général
Interruptor de seguridad de servicio general
60 A, 240 V~, 60 Hz
Complete ratings inside
Valeurs nominales complètes à l'intérieur
Información completa de capacidades en el interior
Further instructions inside
Autres instructions à l'intérieur
Instrucciones adicionales en el interior
Made in U.S.A. / Fabriqué aux É.-U. / Hecho en E.U.A.

⚠ DANGER
HAZARDOUS VOLTAGE. WILL CAUSE SEVERE INJURY OR DEATH.
• Never operate switch with cover open.
• Turn OFF power circuit of switch before using any work inside. Replace all parts. Close cover before turning power ON.
TENSION DANGEREUSE. PEUT CAUSER DES BLESSURES GRAVES OU LA MORT.
• Ne jamais manipuler l'interrupteur lorsque le couvercle est ouvert.
• Couper l'alimentation en amont de l'interrupteur avant toute intervention. Remplacer les pièces. Fermer le couvercle avant de remettre sous tension.
⚠ PELIGRO
VOLTAJES PELIGROSOS. PUEDE CAUSAR HERIDAS SEVERAS O LA MUERTE.
• Nunca opere el interruptor con la cubierta abierta.
• Desconecte la alimentación del interruptor antes de cualquier operación de mantenimiento.
• Reemplace todas las partes.
• Cierre la cubierta antes de energizar el interruptor.

30-43060



**SOLAR PV SYSTEM
EQUIPPED WITH
RAPID SHUTDOWN**



TURN RAPID SHUTDOWN SWITCH TO THE "OFF" POSITION TO SHUT DOWN PV SYSTEM AND REDUCE SHOCK HAZARD IN THE ARRAY

**RAPID SHUTDOWN
SWITCH FOR
SOLAR PV SYSTEM**

⚠ WARNING

ELECTRIC SHOCK HAZARD
TERMINALS ON THE LINE AND
LOAD SIDES MAY BE ENERGIZED
IN THE OPEN POSITION

CAUTION:

MULTIPLE SOURCES OF POWER
THE SERVICE DISCONNECT IS LOCATED
INSIDE OPPOSITE THE UTILITY METER

**AC DISCONNECT
PHOTOVOLTAIC SYSTEM
POWER SOURCE**

RATED AC OUTPUT CURRENT **32.0** AMPS
NOMINAL OPERATING AC VOLTAGE **240** VOLTS



PHOTOVOLT

PV SYSTEM DC DISCONNECT

MAXIMUM VOLTAGE

480V

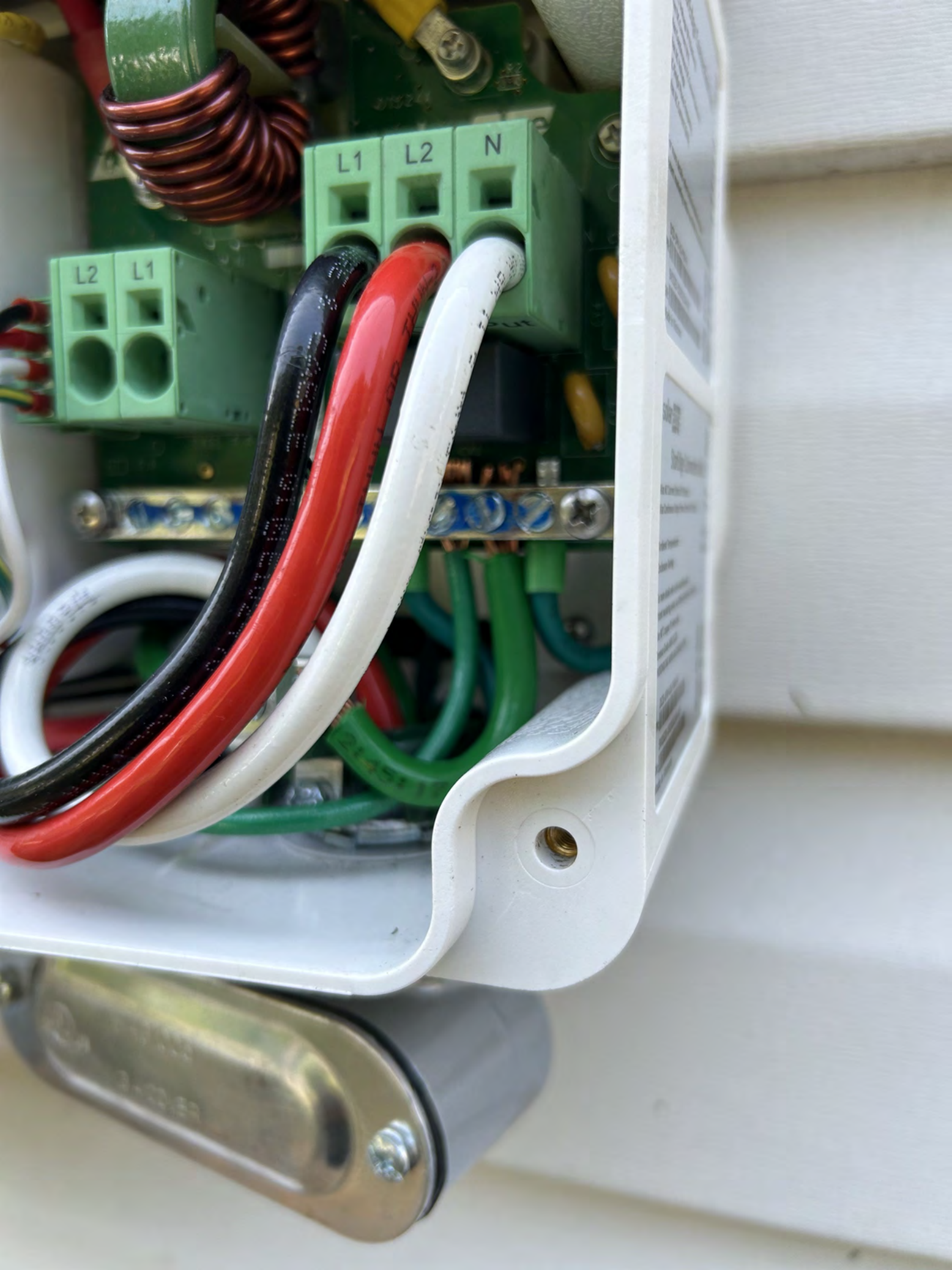
MAXIMUM CIRCUIT CURRENT

20.0A

MAXIMUM RATED OUTPUT
CURRENT OF THE CHARGE
CONTROLLER OR DC TO DC
CONVERTER (IF INSTALLED)

pvlabs.com 03-307

solar_{edge}



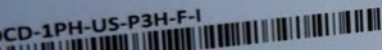


solaredge

StorEdge Connection Unit

Max DC Voltage (PV/Battery)	480 Vdc
Max DC Current (PV)	51 Adc
Max Continuous DC Current (Battery)	31 Adc
Max AC Voltage	264 Vac
AC-Single Phase Frequency	50/60 Hz
Max AC Current (Grid)	40 Aac

For more details refer to the installation guide
Patent marketing notice: see WWW.SOLAREEDGE.COM/patent

DCD-1PH-US-P3H-F-1
PN: 
SV1523-19191E1A4-A7
SN: 
Made in Vietnam



solaredge

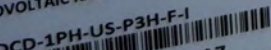
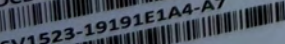
StorEdge Connection Unit

Max AC Current (Smart EV Charger)	40Aac
Max Continuous Output Power (Smart EV Charger)	9600W

-40°C ..60°C
IP65/ Type 4X

Ambient Temperature:
Enclosure Rating:

For more details refer to the installation guide
Patent marketing notice: see WWW.SOLAREEDGE.COM/patent
Use 90° C copper PV wires only.
Revenue Grade ANSI C12.20
PHOTOVOLTAIC RAPID SHUTDOWN SYSTEM

DCD-1PH-US-P3H-F-1
PN: 
SV1523-19191E1A4-A7
SN: 
Made in Vietnam



solar edge SE7600H - US
 Grid Support Utility Interactive
 Non-Isolated Photovoltaic Inverter

Operating Voltage Range: 270 - 480Vdc
 Max Input Current: 20Aac
 Max Continuous Output Power: 7800Wac
 Voltage Min - Nom - Max: 211 - 240 - 284Vac
 Max Continuous Output Current: 32Aac
 Max Output Fault Current: 72Aac
 Max Utility Backfeed Current: 0Aac
 Frequency Min - Nom - Max: 59.3 - 60.0 - 60.5Hz
 Output Power Factor: + / - 0.85 - 1
 Max Ambient Temperature: 40 C
 Enclosure: With integrated ground fault protection per NEC 690.35 (c)
 Type I Photovoltaic Arc - Fault Circuit - Protection

WI - FI Password: a3C88qLq
 Activation: azes + rKk ZVLz Vhd VZgd 5zW/ BZA =
 WiFi MAC: 84:D6:C5:4A:C3:C1
 ZigBee MAC: 4004590


Intertek
 4004590
 ETL US

PN: SE7600H - USSNBBL14
 SN: SV1523 - 075022B6F - 11



solar edge

PHOTOVOLTAIC RAPID SHUTDOWN SYSTEM



solar edge

ETL LISTED
 CONFORMS TO
 ANSI/UL 1741
 CERTIFIED TO
 CAN/CSA
 C22.2 NO 107

Intertek
 4004590

75022B6F - 11



Contains FCC ID: 2AGPT-PLNX, IC: 20914-PNLX. The enclosed device complies with part 15 of the FCC Rules. Operation is subject to the following two conditions:
 (1) This device may not cause harmful interference and
 (2) This device must accept any interference received, including interference that may cause undesired operation.

PATENT MARKING NOTICE: See www.solaredge.com/groups/patent

Made in Vietnam



PHOTOVOLTAGIC POWER SOURCE

SUN PES
MAD

CENTRAL ELECTRIC



ACTIVATED CARBON
FOR MORE INFORMATION
CALL: 1-800-648-8993
SINCE 1945
410 KENNY BLVD
11000
THE S. SIDE COMPANY
11000

THE S. SIDE COMPANY

ACTIVATED CARBON

ACTIVATED CARBON

PHOTOVOLTAIC POWER SOURCE







PHOTOVOLTAIC POWER SOURCE

INDUIT - SUN RES - MADE IN U.S.A.

CE

1000VDC

CENTUR ELECTRIC

MADE IN U.S.A.

PHOTOVOLTAIC POWER SOURCE

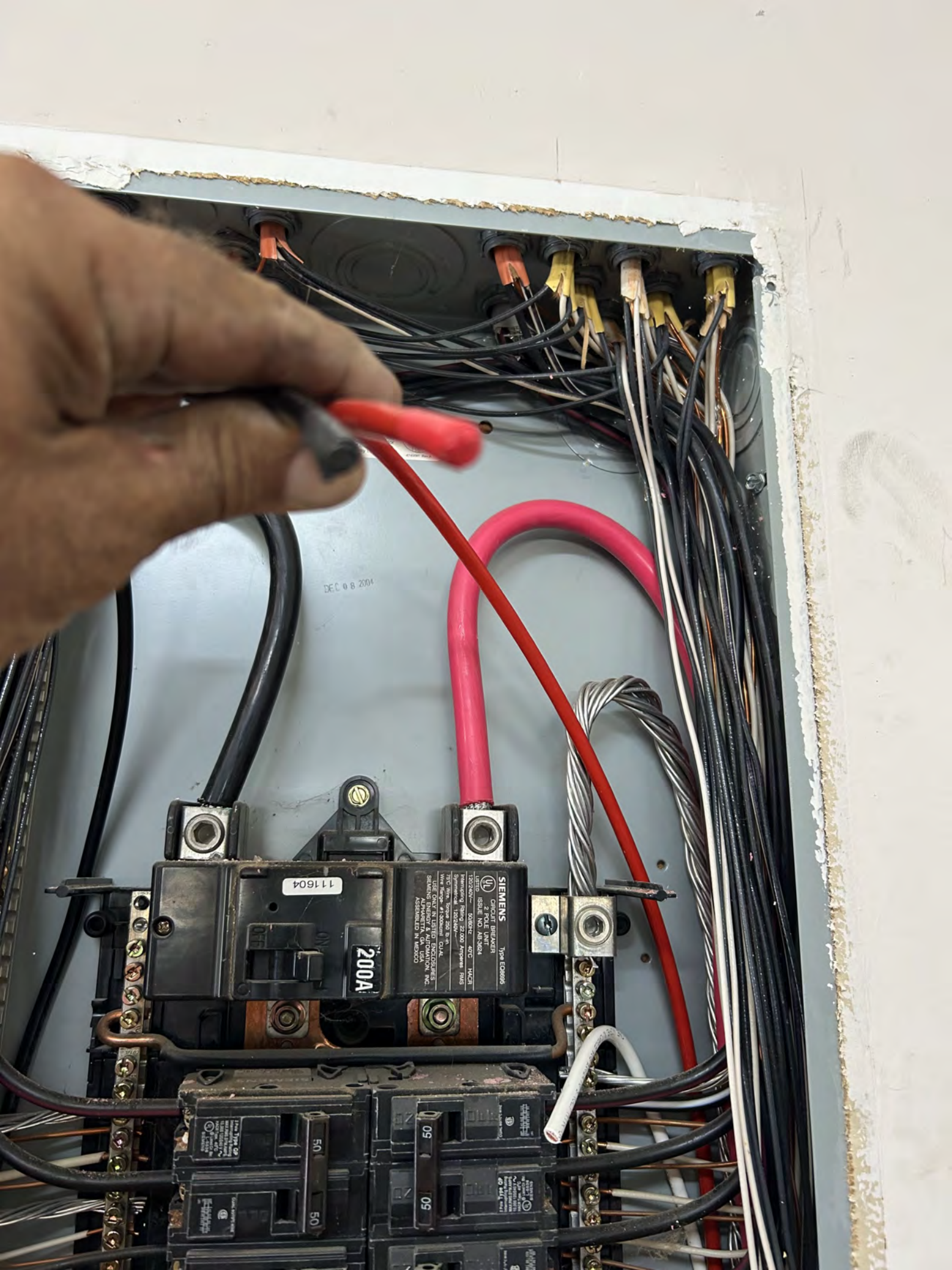
TAIG POWER SOURCE

INDUIT - SUN RES - MADE IN USA

PHOTOVOLTAIC POWER SOURCE







DEC 08 2004

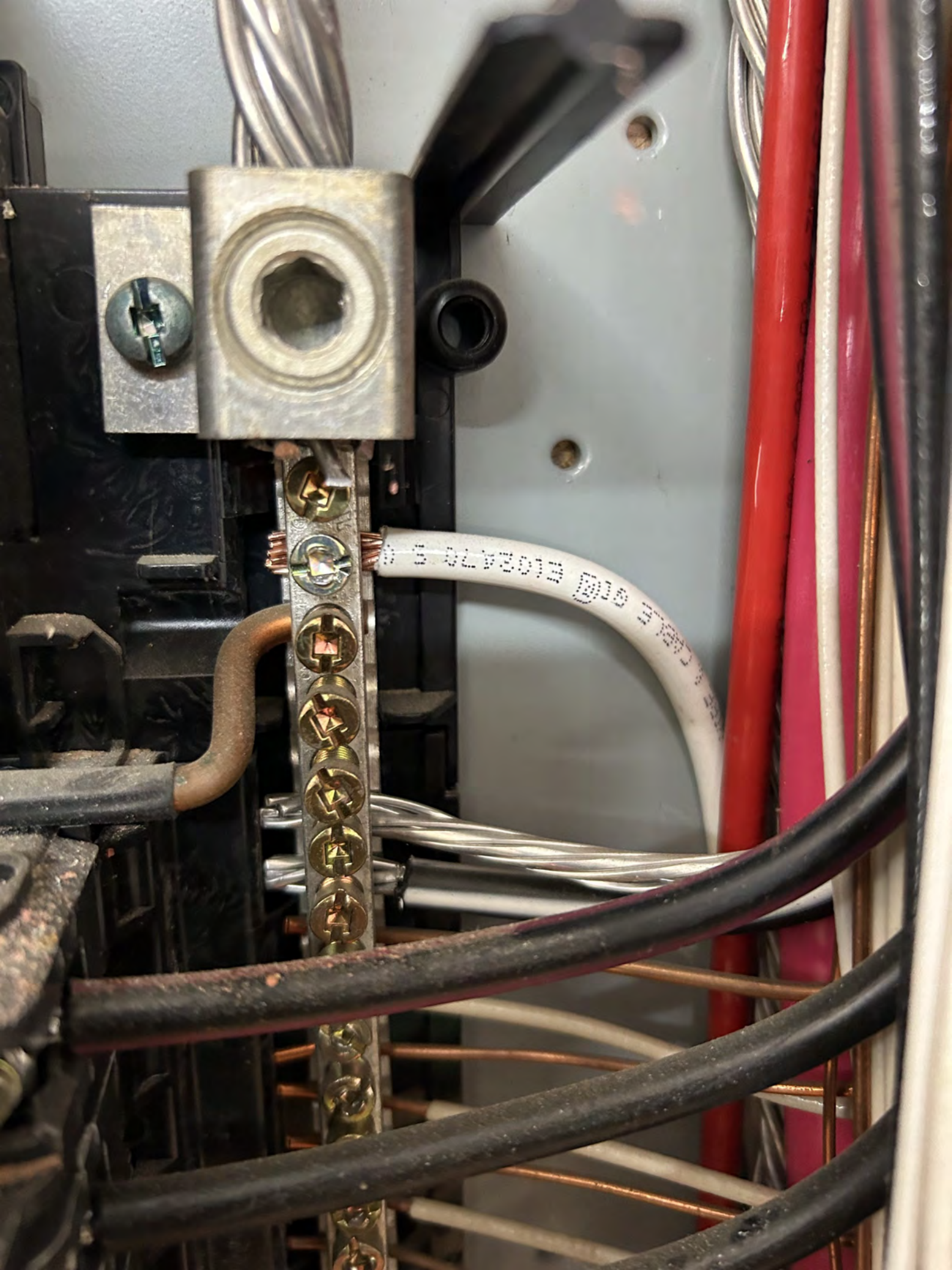
SIEMENS
CIRCUIT BREAKER
Type EC6895
UL LISTED ISSUE NO. 483824
K02B24- 40°C HACR
Manufacturing Rating 22,000 Amperes RMS
Type 100% 100% TOUGH
Wire Range #1000000 0-14 AWG
USE ONLY IN LISTED ENCLOSURES
SILICON ALUMINUM GLASS
ASSEMBLED IN MEXICO

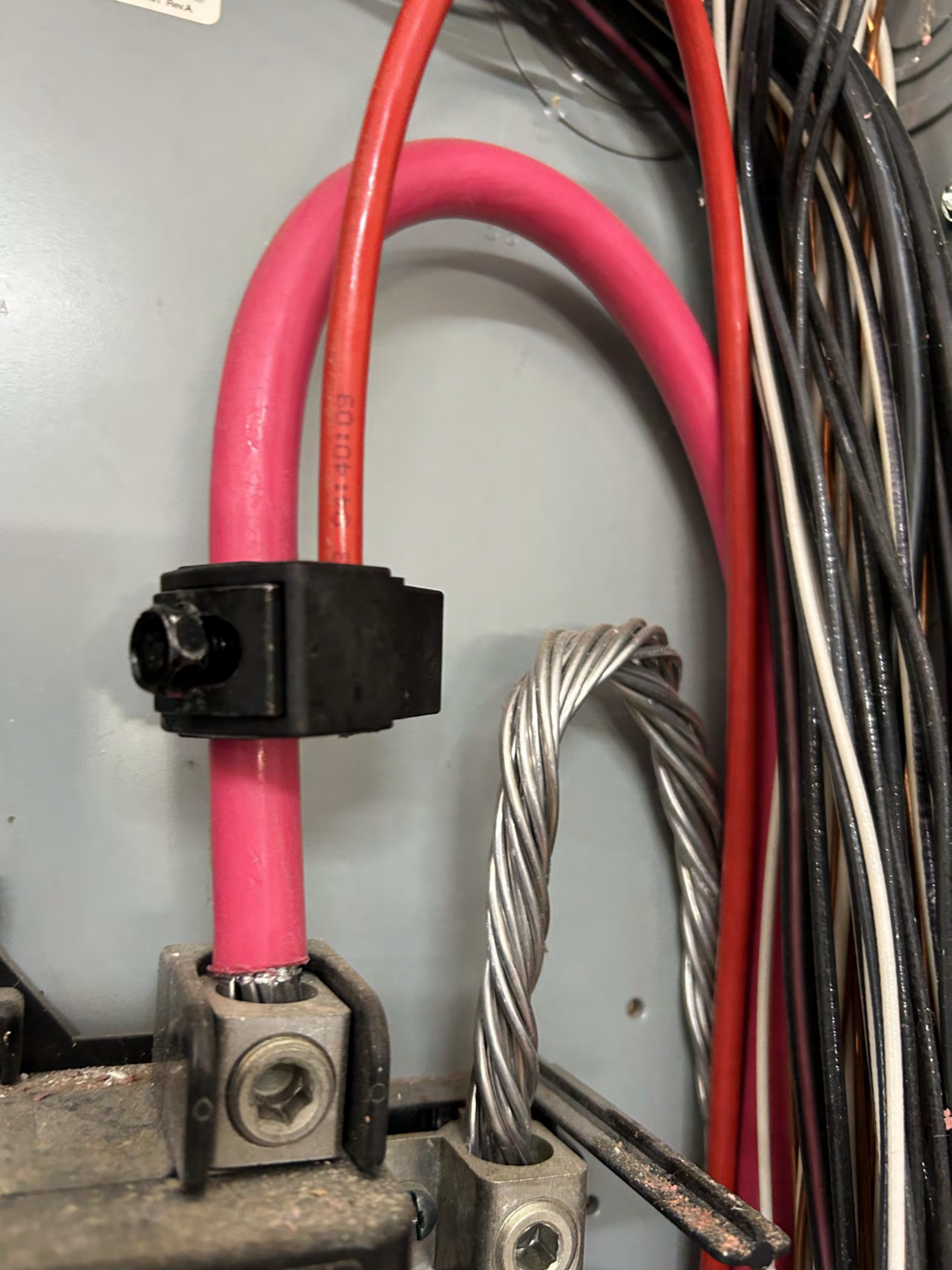
111604

200A

50

50





Rev A

EQ:104:110



If this device is to be mounted on a solid wall and the neutral is to be bonded, torque the bonding screw prior to mounting the box to ensure proper contact with the lug tang. See wiring diagram for proper torque. Spacer kit SMK1 may be used to space the unit away from the wall. 4740001 Rev. A

REC 0 8 2004

60106 140

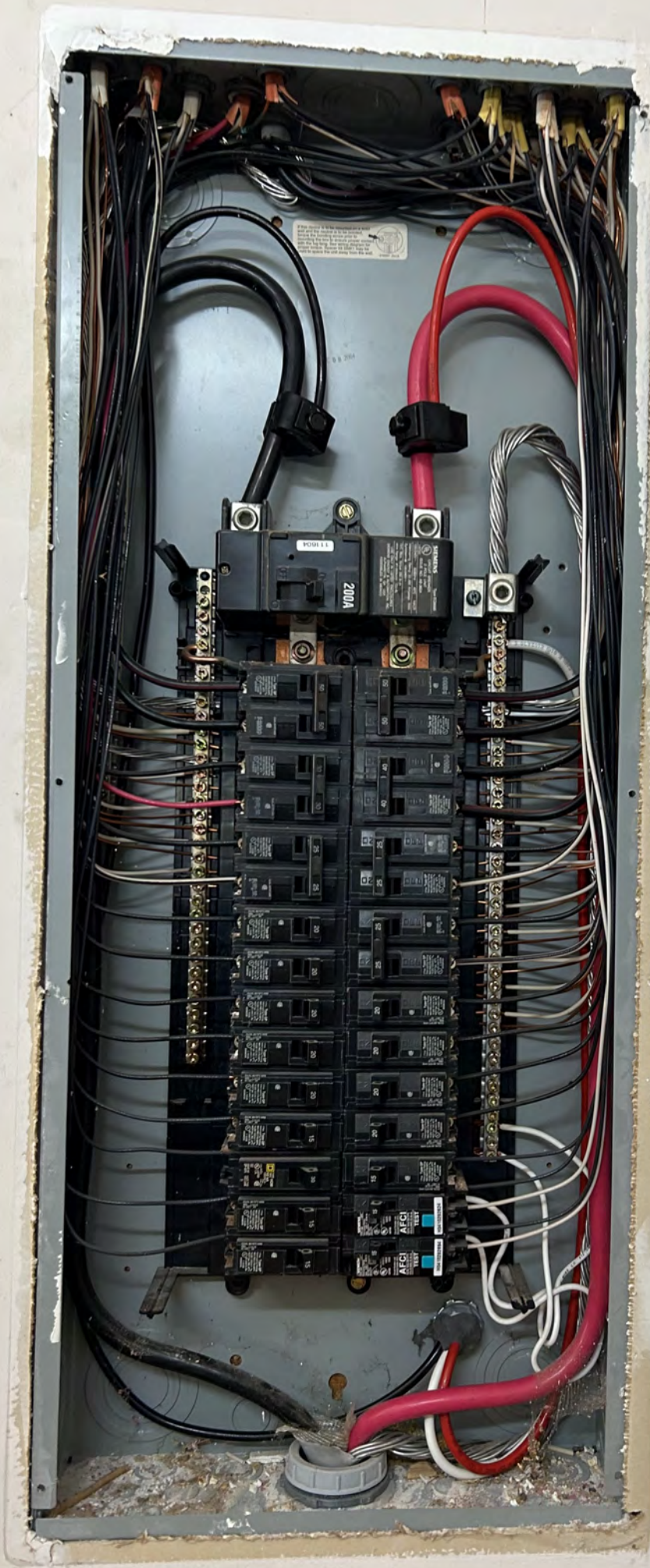
111604

200A

SIEMENS Type EC0666
CIRCUIT BREAKER
2 POLE UNIT
ISSUE NO. AB-984
LISTED
120/240V~ 50/60Hz 40°C HACR
Interrupting Rating 22,000 Amperes RMS
Symmetrical 120/240V~
75°C Wire, Torque 250 lb-in.
Wire Range #1-300kcmil CU-AL
USE ONLY IN LISTED ENCLOSURES
SIEMENS ENERGY & AUTOMATION, INC.
ALPHARETTA, ILLINOIS
ASSEMBLED IN MEXICO

SIEMENS

60106 140





ALCO

1100-101-0001

1001

1-20 0 008 00



CAUTION





CAUTION / C





Edison

TIME-DELAY
DUAL-ELEMENT
CURRENT-LIMITING
CLASS RK5 FUSE

ECNR40 AMP

250Vac or less
AC IR 200kA RMS
125 VDC 20kA

250Vac or less
AC IR 200kA RMS
125 VDC 20kA



Edison

TIME-DELAY
DUAL-ELEMENT
CURRENT-LIMITING
CLASS RK5 FUSE

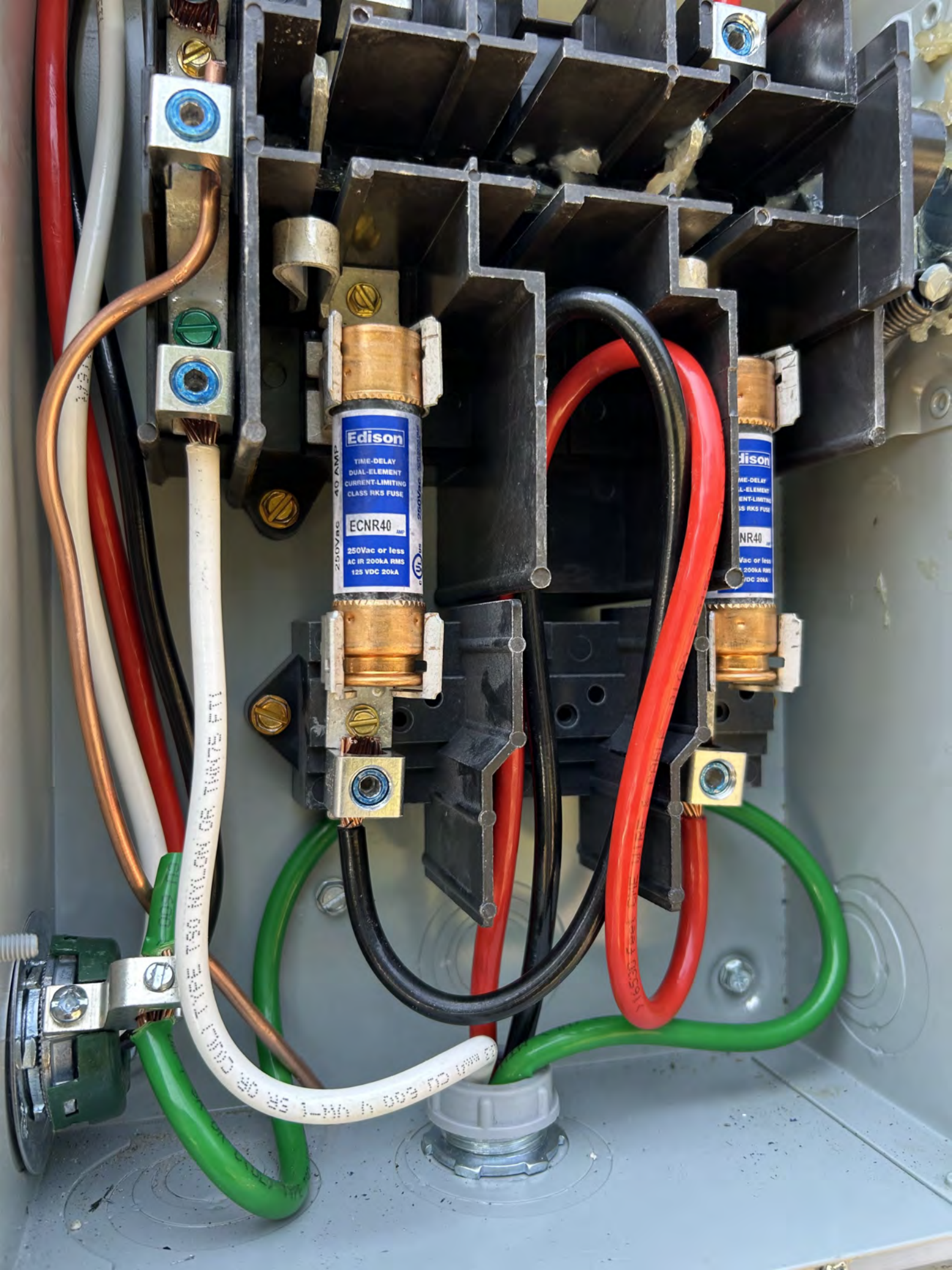
ECNR40 AMP

250Vac or less
AC IR 200kA RMS
125 VDC 20kA

250Vac or less
AC IR 200kA RMS
125 VDC 20kA







Edison
TIME-DELAY
DUAL-ELEMENT
CURRENT-LIMITING
CLASS RK5 FUSE
ECNR40
250Vac or less
AC IR 200KA RMS
125 VDC 20KA

Edison
TIME-DELAY
DUAL-ELEMENT
CURRENT-LIMITING
CLASS RK5 FUSE
NR40
250Vac or less
AC IR 200KA RMS
125 VDC 20KA

1.5 2MM 30 NYLON OR TUBES FT
1.5 2MM 30 NYLON OR TUBES FT

⚡ DANGER
 HAZARDOUS VOLTAGE, WILL CAUSE SEVERE INJURY OR DEATH

⚡ PELIGRO
 PELIGROSA PUEDE CAUSAR HERIDAS SEVERAS O LA MUERTE

⚡ DANGER
 DANGEROUS VOLTAGE, WILL CAUSE SEVERE BURNS OR DEATH

Never operate switch with cover open.
 Si el interruptor está abierto, asegure la cubierta antes de trabajar.

Always use a properly rated voltage sensing device on any and load side (line or load) or load side (load or non-load) to confirm switch is open.
 Siempre utilice un dispositivo de medición adecuado en ambos lados del interruptor (tanto en el lado de la línea como en el lado de la carga) o en el lado de la carga (tanto en el lado de la línea como en el lado de la carga) para confirmar que el interruptor está desenergizado.

Turn OFF power ahead of work, before doing any before turning power ON.
 Desconecte la alimentación del interruptor antes de trabajar dentro del mismo. Reenergice solo las partes. Cerrar la cubierta antes de energizar el interruptor.

DG22NRB

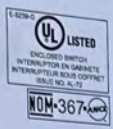
Series B
 GENERAL DUTY SAFETY SWITCH
 Type 2B Enclosure - Rainproof



TERMINALS SUITABLE FOR AL-CU WIRE.
 INTERRUPTOR DE SEGURIDAD DE SERVICIO GENERAL
 Góndola NEMA 3B - A Prueba De Lluvia

TERMINALES ADECUADAS PARA CONDUCTORES DE AL-CU.
 INTERRUPTOR DE SEGURIDAD A USADG GENERAL
 Envolupe De Tipo 2B - A L'Épreuve De La Pluie

BORNES CONVENIENT PARA CONDUCTORES AL-CU.
 60 Amperes 120/240, 240, 127/220 V ~ 60Hz 3W S/N, 3H N/S, 3F N/S



Volts / Tension / Voltage	1 Phase / Fase		3 Phase / 3 Fase *		2 Pole / 2 Pólos	
	Std. / Est.	Max.	Std. / Est.	Max.	Std. / Est.	Max.
120 / 127 ~	1 1/2 (1,135)	3 (2,238)	3 (1,238)	7 1/2 (5,640)	-	-
240 ~	3 (2,238)	10 (7,440)	7 1/2 (5,640)	15 (11,130)	-	-

*For grounded B Phase systems only.
 Maximum fuse size 60A.
 The starting current of motors of more than the standard horsepower ratings may require the use of fuses with appropriate time-delay characteristics. Continuous load current not to exceed 80% of the rating of fuses employed in other than motor circuits.
 Suitable for use as service equipment.
 Suitable for use on a circuit capable of delivering not more than 100,000 RMS symmetrical amperes, 240 V - maximum, when Class R fuses are used. Fuse kit DSMPK is required for R fuses.
 DANGER - Unless Class R fuses are used, this switch may present a risk of fire and personal injury if installed on circuits capable of delivering more than 10,000 RMS symmetrical amperes.
 When used with Class K or H fuses, suitable for use on a circuit capable of delivering not more than 10,000 RMS symmetrical amperes, 240-volt maximum.
 Experience has shown that renewable fuses can cause overheating problems and thus the use of renewable fuses is not recommended.
 Use 60°C or 75°C wire.
 Lug torque / Hex across flats / 5/32" / 800 LB.-in
 Wire range
 14 - 10 AWG, 2.1 to 5.3 mm² AL-CU

Accessories
 Install per instructions supplied with kit.
 R Fuse kit DSMPK
 Neutral kit DG000B
 Ground lug kit DG000B
 3/4" (19.05mm) Hub size DS075H
 1" (25.40mm) Hub size DS100H
 1 1/2" (38.10mm) Hub size DS150H
 2" (50.80mm) Hub size DS200H

Accessories
 Instalar de acuerdo a instrucciones incluidas en los accesorios.
 Juego adaptador para fusibles tipo "R" DSMPK
 Juego de partes para terminal de tierra DG000B
 Juego de neutros DG000B
 3/4" (19.05mm) Tamaño de copla DS075H
 1" (25.40mm) Tamaño de copla DS100H
 1 1/2" (38.10mm) Tamaño de copla DS150H
 2" (50.80mm) Tamaño de copla DS200H

Accessories
 Installer conformément aux directives fournies avec l'ensemble.
 Ensemble pour fusible "R" DSMPK
 Ensemble de bornes de terre DG000B
 Ensemble de neutres DG000B
 3/4" (19.05mm) Calibre des manchons DS075H
 1" (25.40mm) Calibre des manchons DS100H
 1 1/2" (38.10mm) Calibre des manchons DS150H
 2" (50.80mm) Calibre des manchons DS200H

Soledad para sistemas con falla a tierra en fase B.
 Adecuado para usarse como equipo de acumulado.
 Tamaño máximo de fusible de 60 amperes.
 La corriente de arranque de motores con capacidad mayor a los cables de potencia estándar puede requerir el uso de fusibles con características de retardo de tiempo apropiadas.
 La corriente de carga continua no debe exceder el 80% de la capacidad del fusible empleado, con excepción de los circuitos de motores.
 Adecuado para usarse en circuitos capaces de entregar no más de 100 000 A RCM simétricos, con 240 V - máximo, cuando se utilizan fusibles clase R. El juego adaptador de fusibles DSMPK es requerido para fusibles clase R.
 PELIGRO - A menos que se utilicen fusibles clase R, este interruptor puede presentar riesgos de incendio y daño personal si se instala en circuitos con capacidad de entregar más de 10 000 A RCM simétricos. Cuando se utilizan fusibles clase K o H, es adecuado para usarse en circuitos con capacidad de entregar no más de 10 000 A RCM simétricos, con 240 V - máximo.
 La experiencia muestra que los fusibles renovables pueden causar problemas de sobrecalentamiento, por lo tanto, el uso de fusibles renovables no es recomendable.
 Usar conductores para 60°C o 75°C.
 Par de apriete de terminales / Tornillo de cabeza hexagonal / 1.37 mm / 113.2 Nm
 Rango de la sección transversal del conductor
 14 - 10 AWG, 2.1 a 5.3 mm² AL - CU

*Seulement pour des systèmes de phase B MALT.
 Apprécier comme équipement d'entre de service.
 Calibre maximum du fusible 60A.
 L'intensité de démarrage des moteurs plus élevée que pour les "horsepower" standards peut exiger l'utilisation de fusibles ayant des caractéristiques de temporisation appropriées.
 Taux de charge continue ne devra pas excéder 80% du calibre des fusibles utilisés sauf s'il s'agit de circuits de moteurs.
 Convient à un circuit de 100,000 ampères efficaces symétriques au plus, 240 V - maximum, lorsque des fusibles de classe R sont utilisés.
 Ensemble de fusible DSMPK requis pour fusibles R.
 DANGER - A moins d'utiliser des fusibles de classe R, cet interrupteur peut présenter des risques d'incendie et de blessures corporelles s'il est installé dans un circuit capable de délivrer plus de 10,000 ampères RMS symétriques.
 Si utilisé avec des fusibles K ou H, l'interrupteur sera approprié pour utilisation sur un circuit ne délivrant pas plus de 10,000 ampères RMS symétriques, 240V maximum.
 L'expérience démontre que l'utilisation de fusibles renouvelables peut causer des problèmes de surchauffe et, par conséquent, ces fusibles ne sont pas recommandés.
 Utiliser conducteur 60°C ou 75°C.
 Utiliser conducteur 60°C ou 75°C.
 Torque aux bornes / Vis à tête six pans / 5/32" / 800 LB.-in
 14 - 10 AWG, 2.1 à 5.3 mm² AL - CU



150 MYLON OR THWTS FTI
 150 MYLON OR THWTS FTI
 150 MYLON OR THWTS FTI

PUB5374





CAUTION