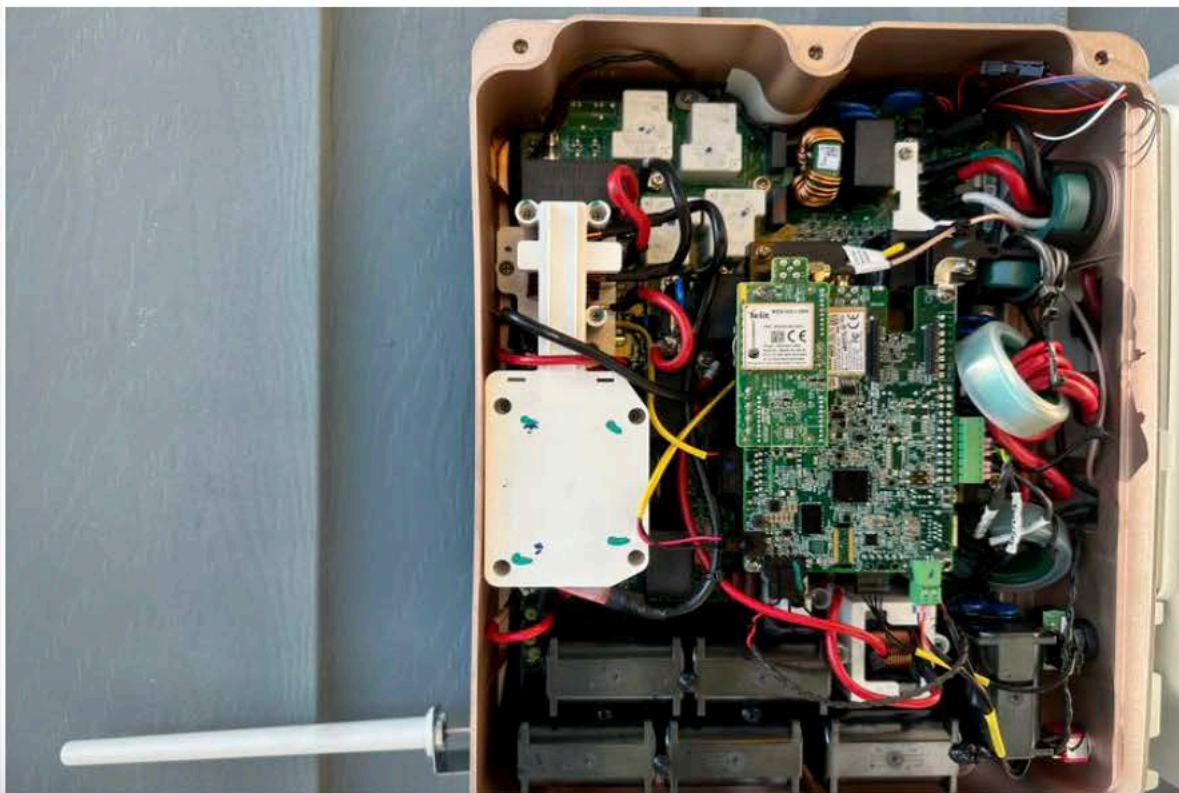




2023-08-15T12:28:43 IMG6370.jpeg



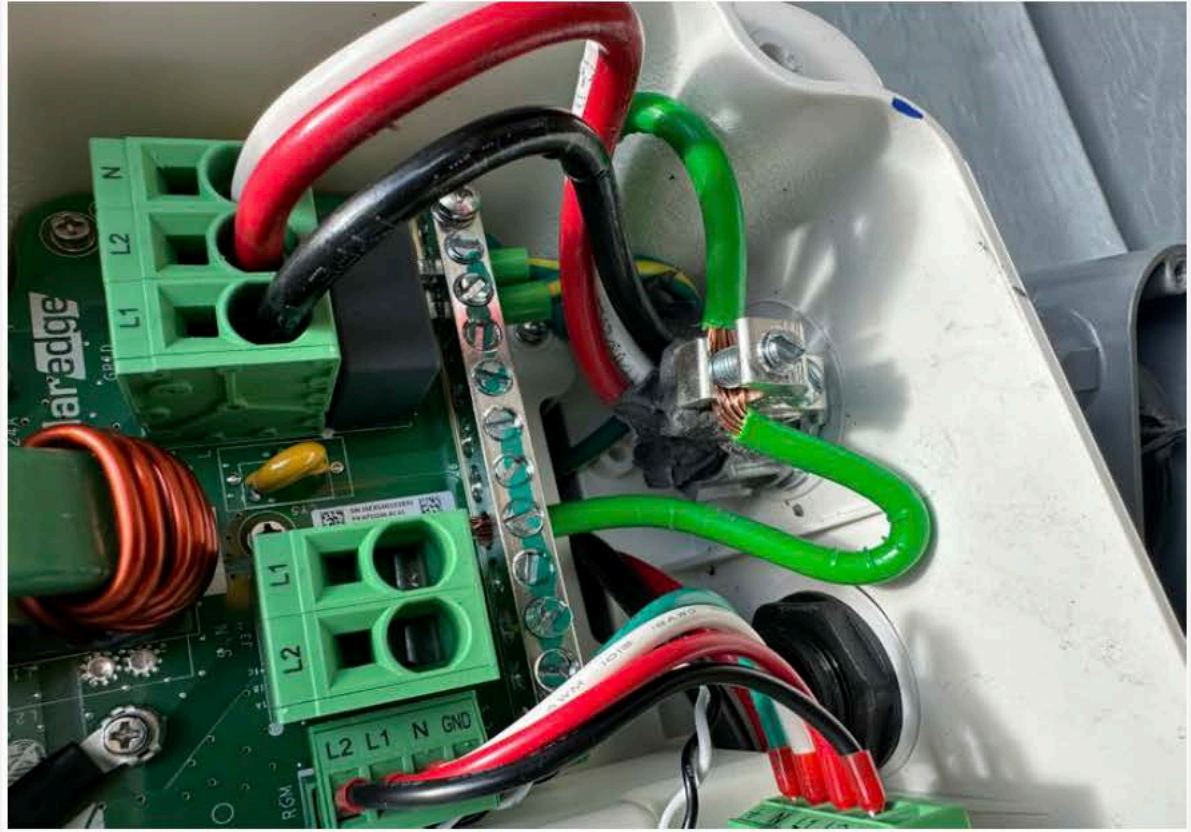
2023-08-15T12:28:45 IMG6371.jpeg



2023-08-15T13:17:22 IMG6372.jpeg



2023-08-15T13:17:24 IMG6373.jpeg



2023-08-15T13:17:25 IMG6374.jpeg



2023-08-15T13:17:29 IMG6375.jpeg



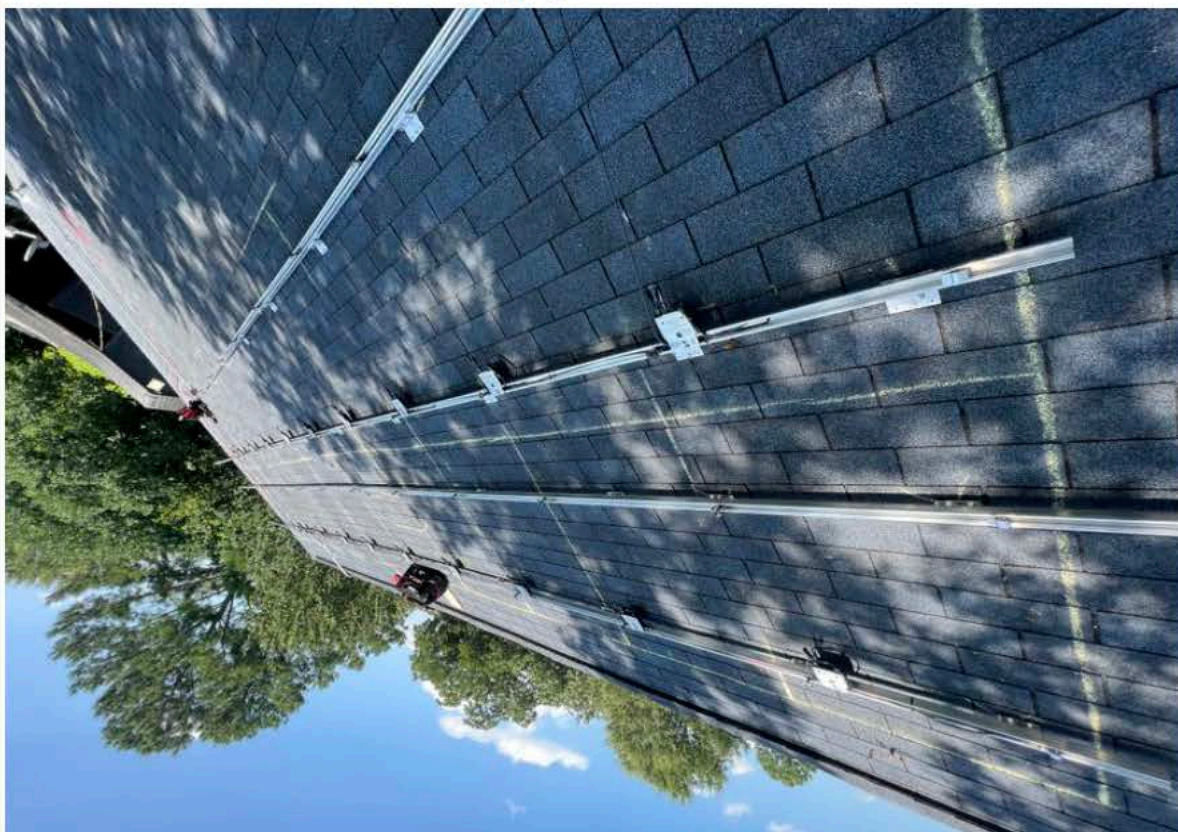
2023-08-15T13:17:30 IMG6376.jpeg



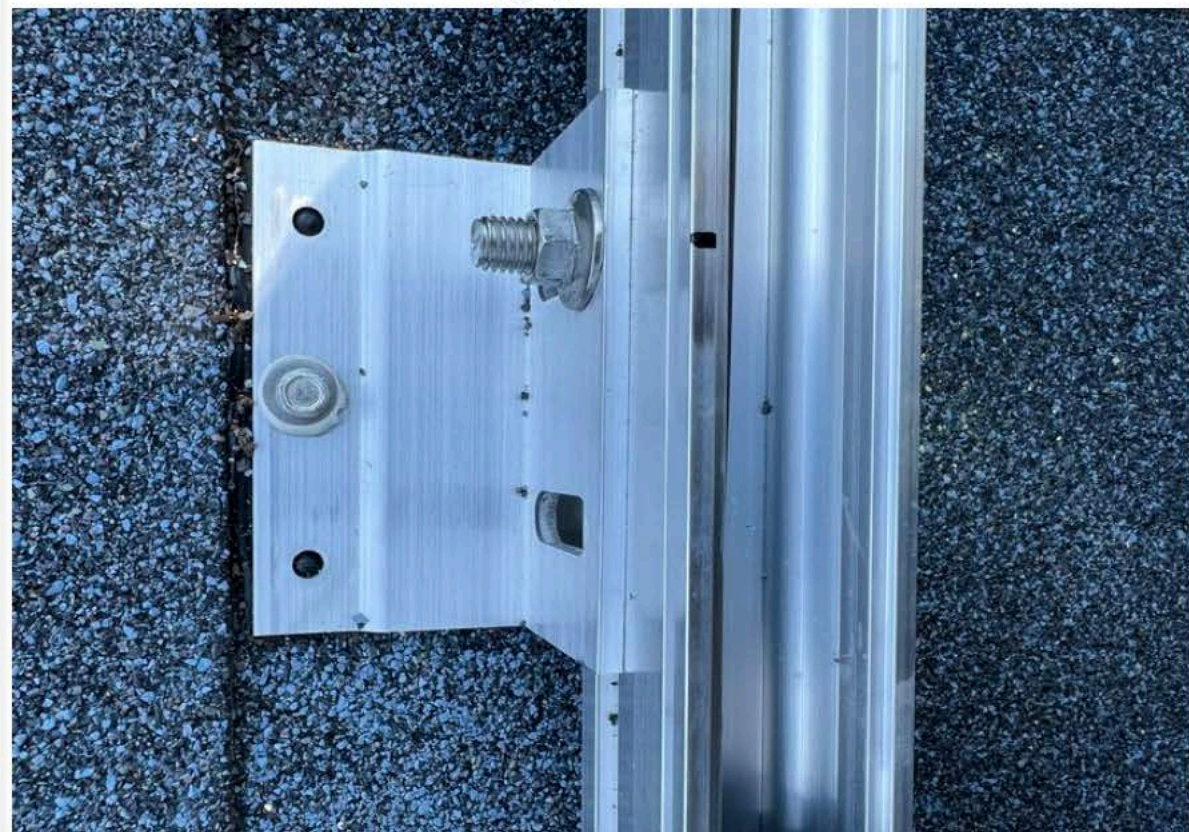
2023-08-15T13:44:00 IMG8646.jpeg



2023-08-15T13:44:02 IMG8647.jpeg



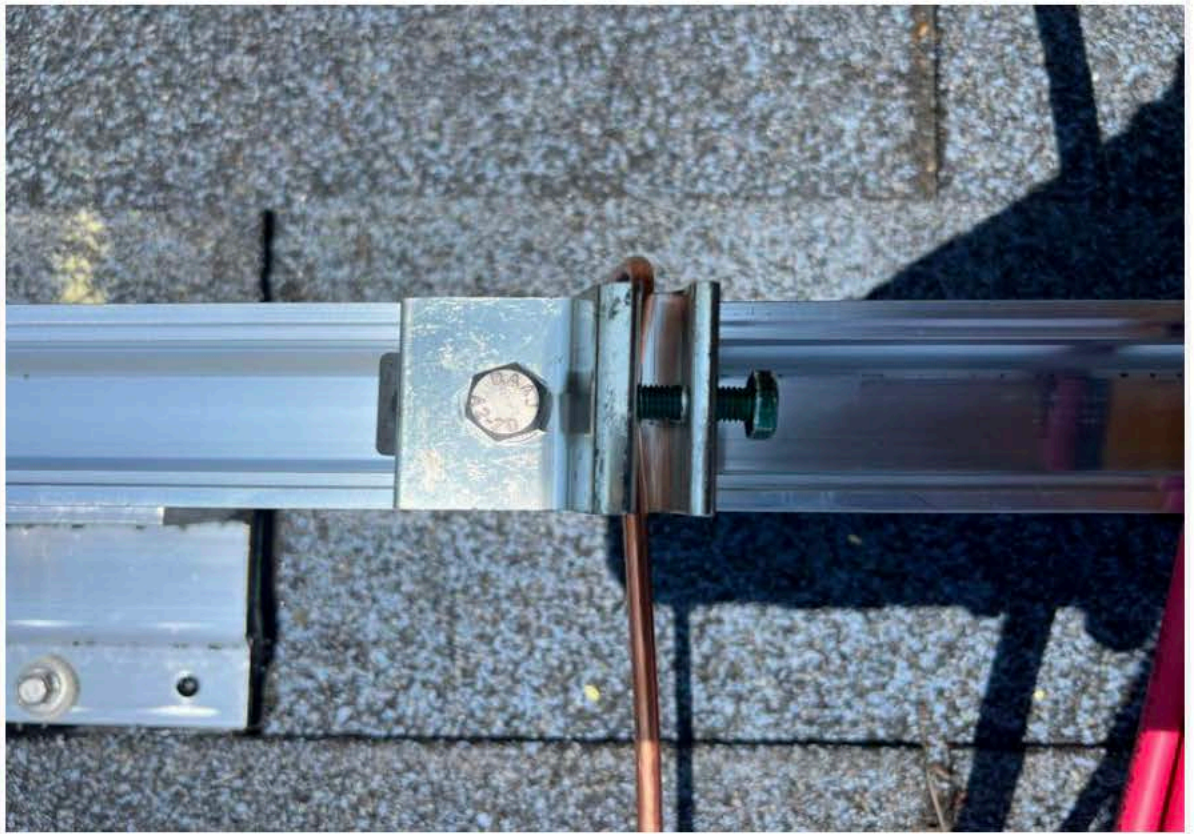
2023-08-15T13:44:10 IMG8648.jpeg



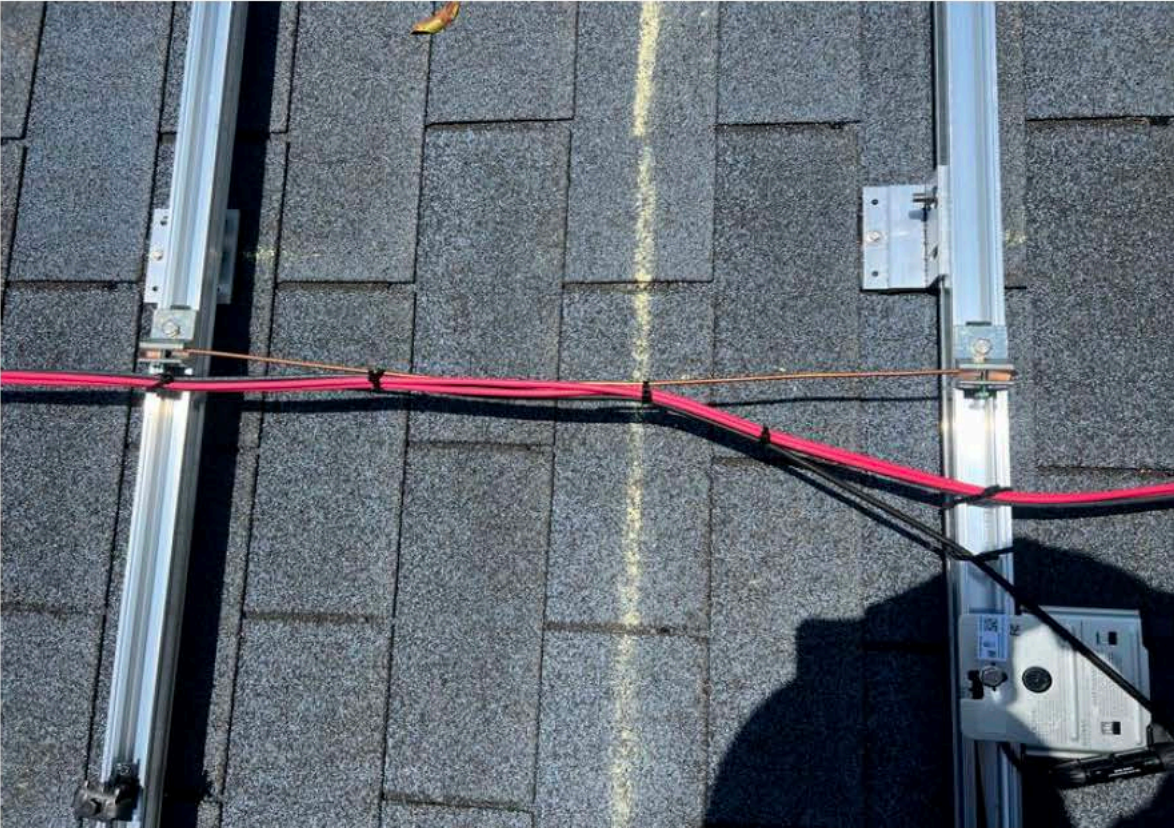
2023-08-15T13:44:17 IMG8649.jpeg



2023-08-15T13:44:25 IMG8650.jpeg



2023-08-15T13:44:28 IMG8651.jpeg



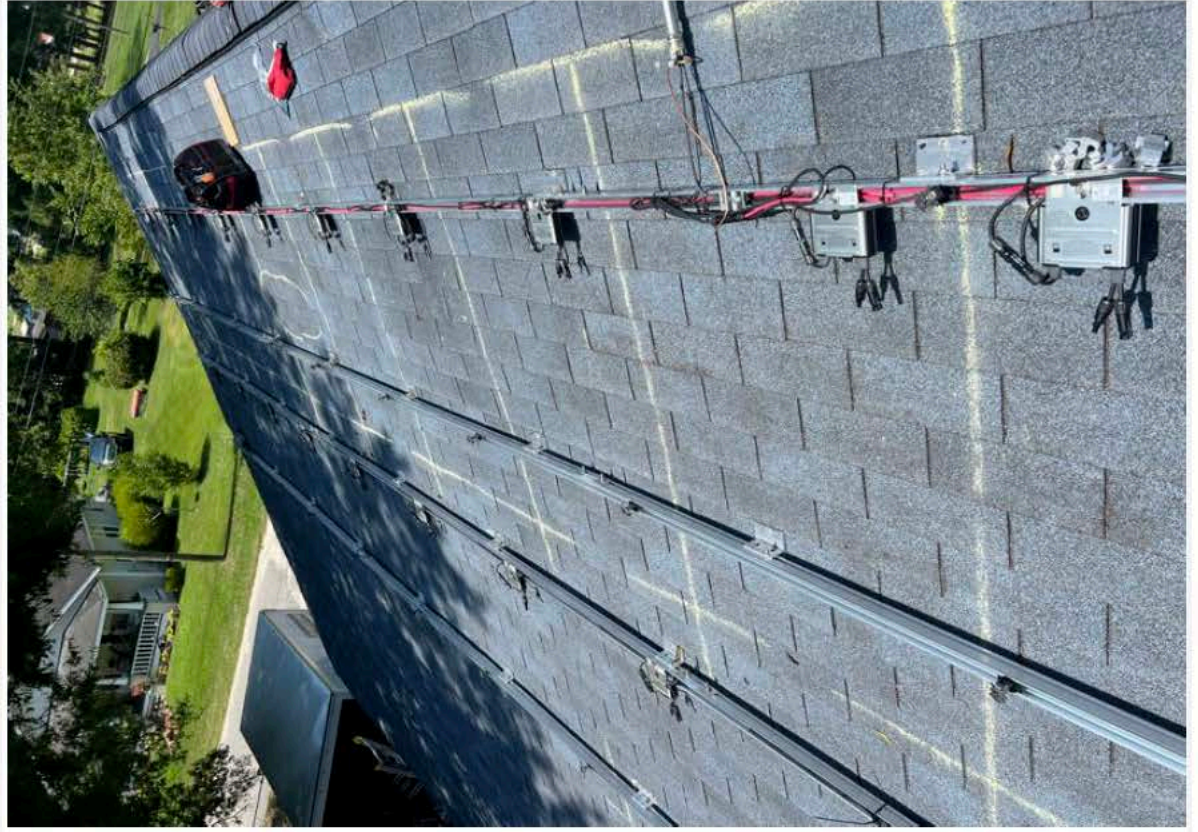
2023-08-15T13:44:32 IMG8652.jpeg



2023-08-15T13:44:38 IMG8653.jpeg



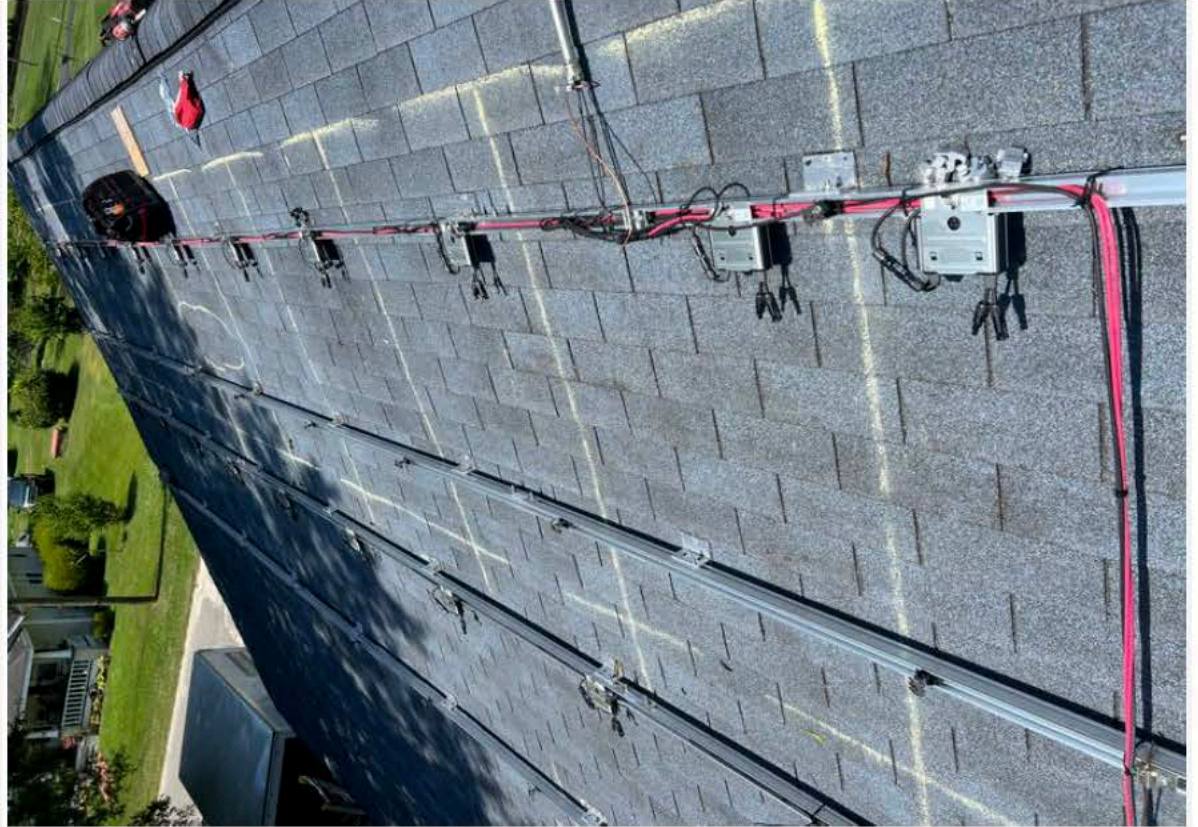
2023-08-15T13:44:40 IMG8654.jpeg



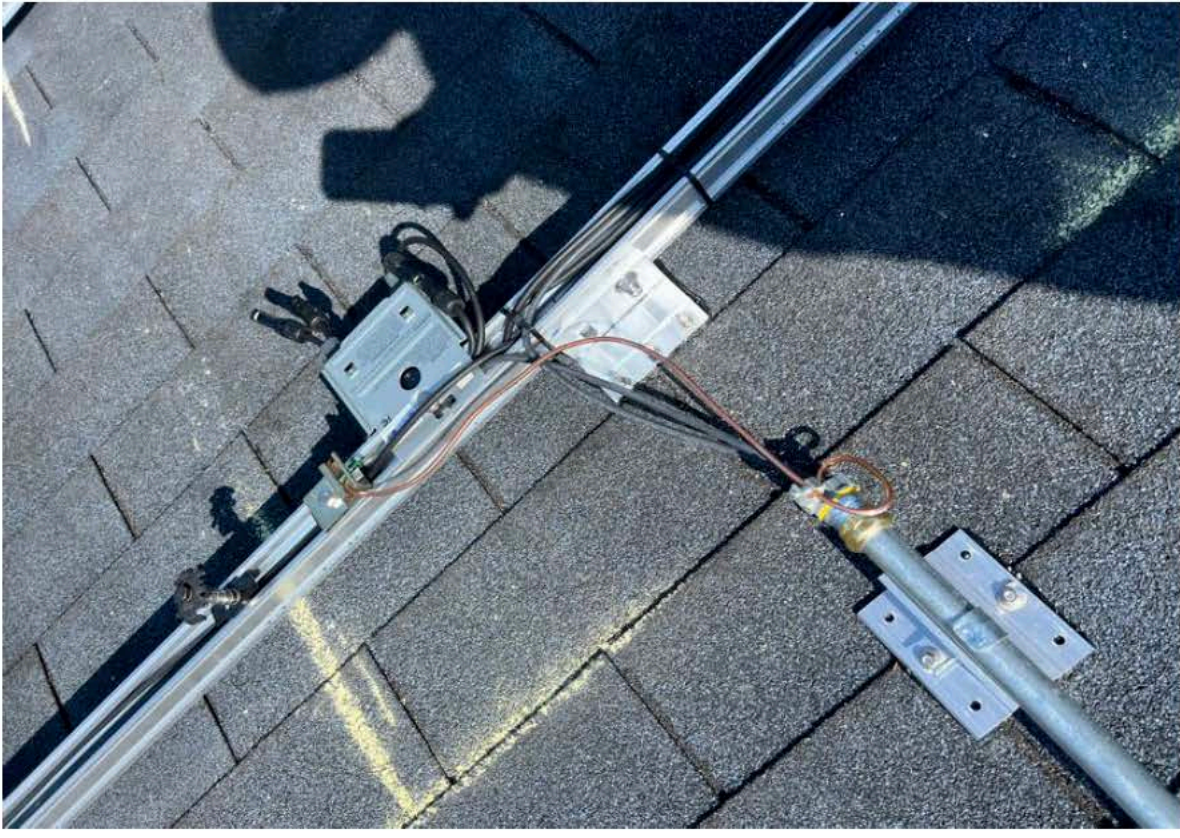
2023-08-15T13:44:41 IMG8655.jpeg



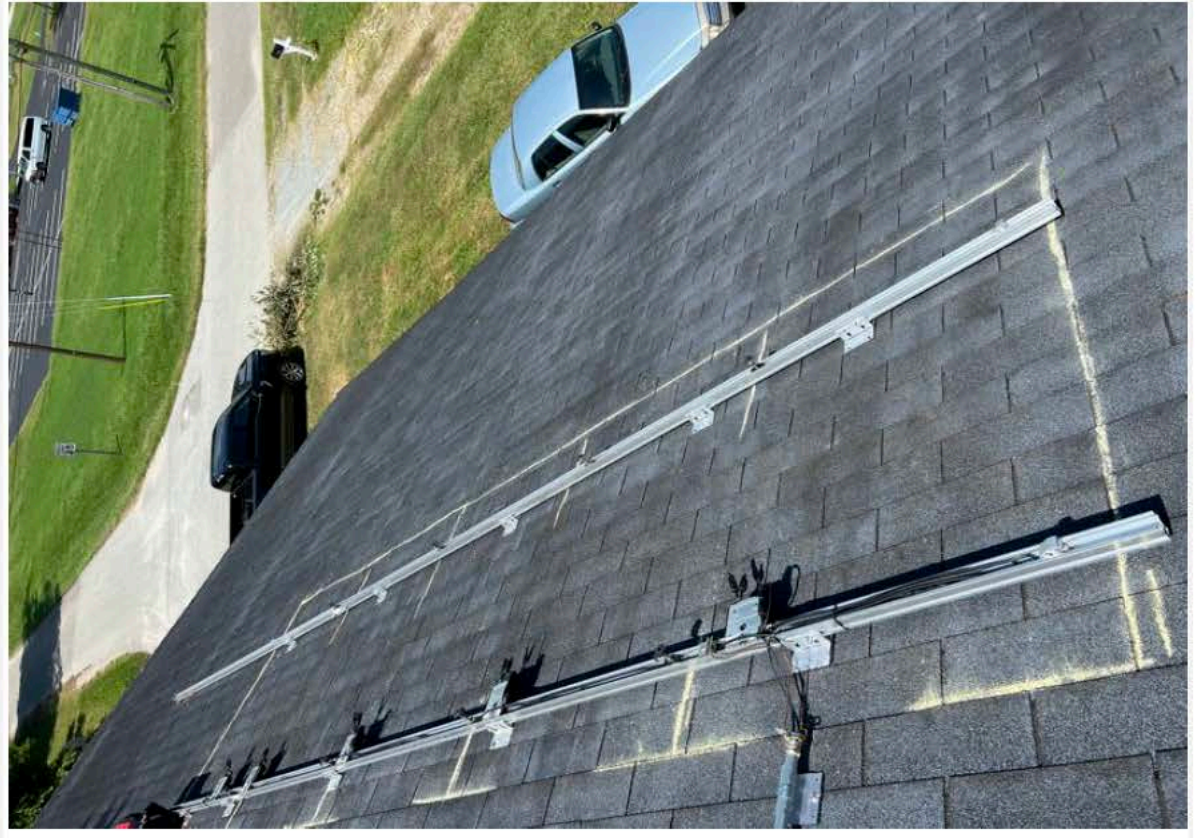
2023-08-15T13:44:42 IMG8656.jpeg



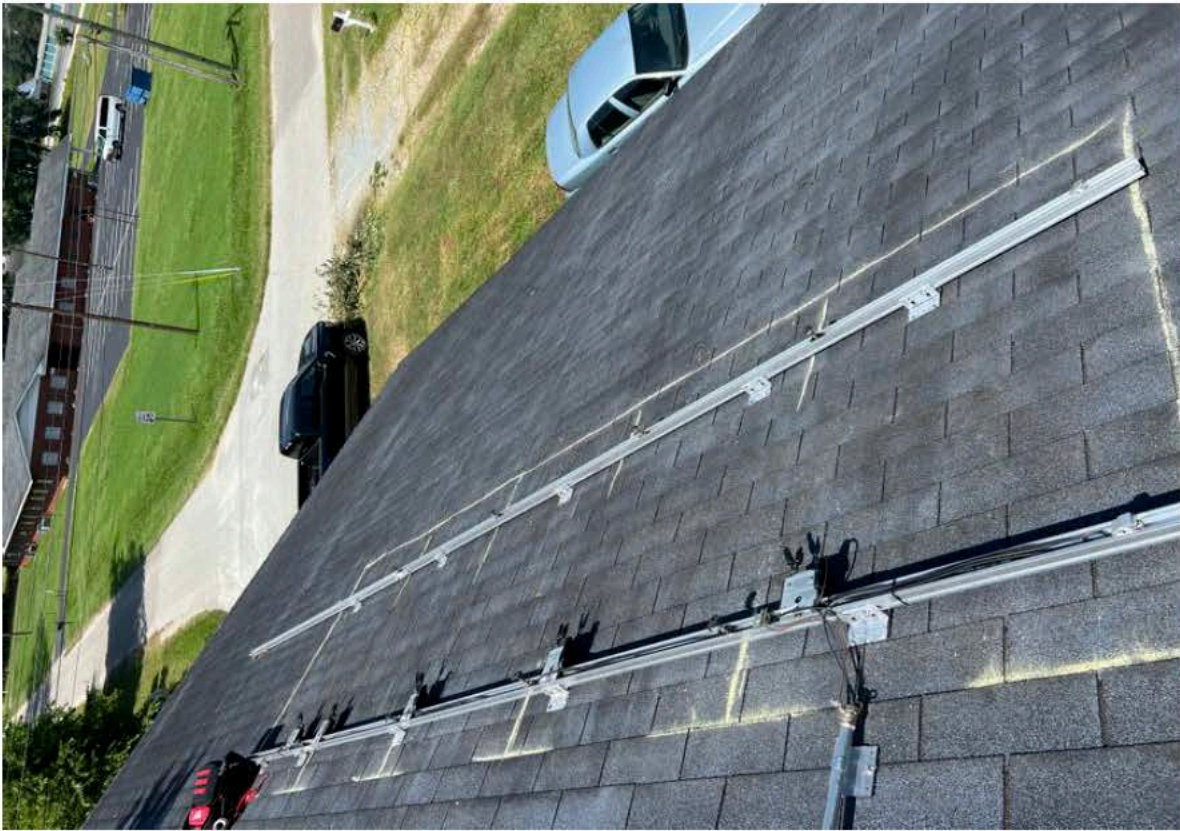
2023-08-15T13:44:47 IMG8657.jpeg



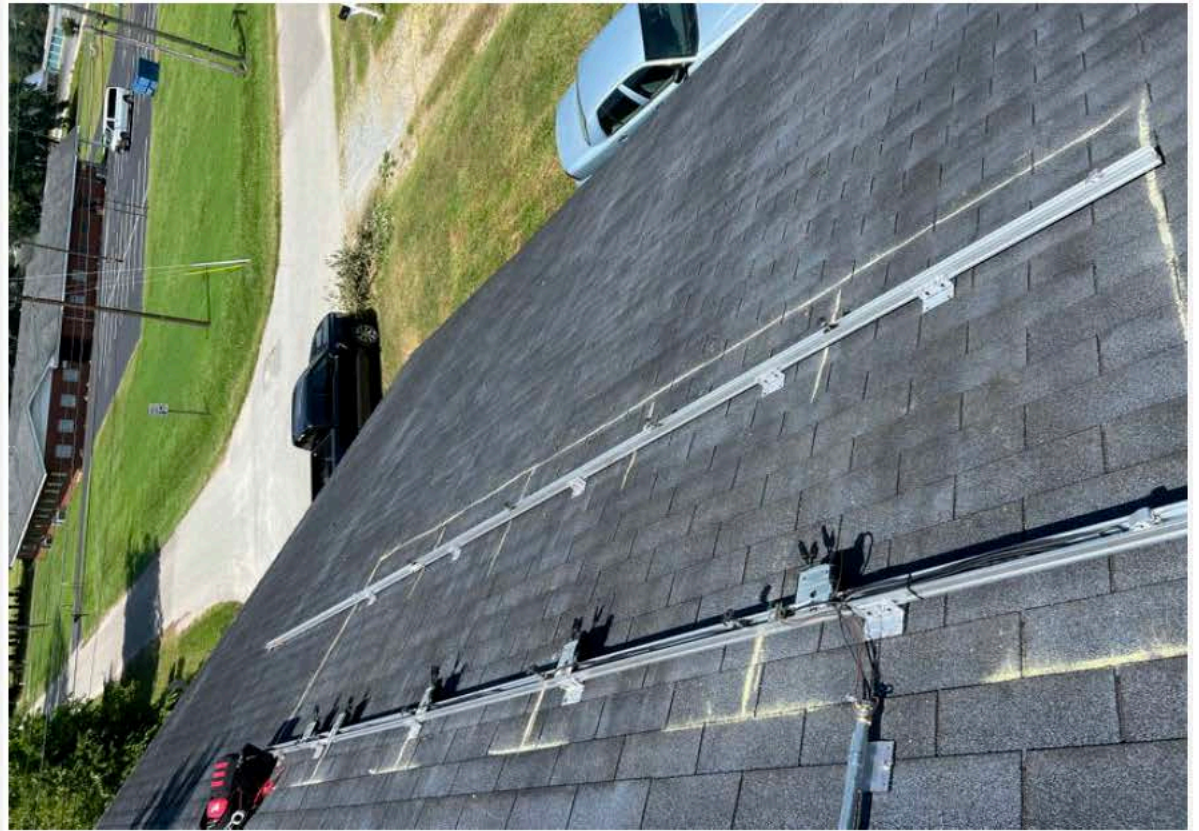
2023-08-15T13:44:52 IMG8658.jpeg



2023-08-15T13:44:52 IMG8659.jpeg



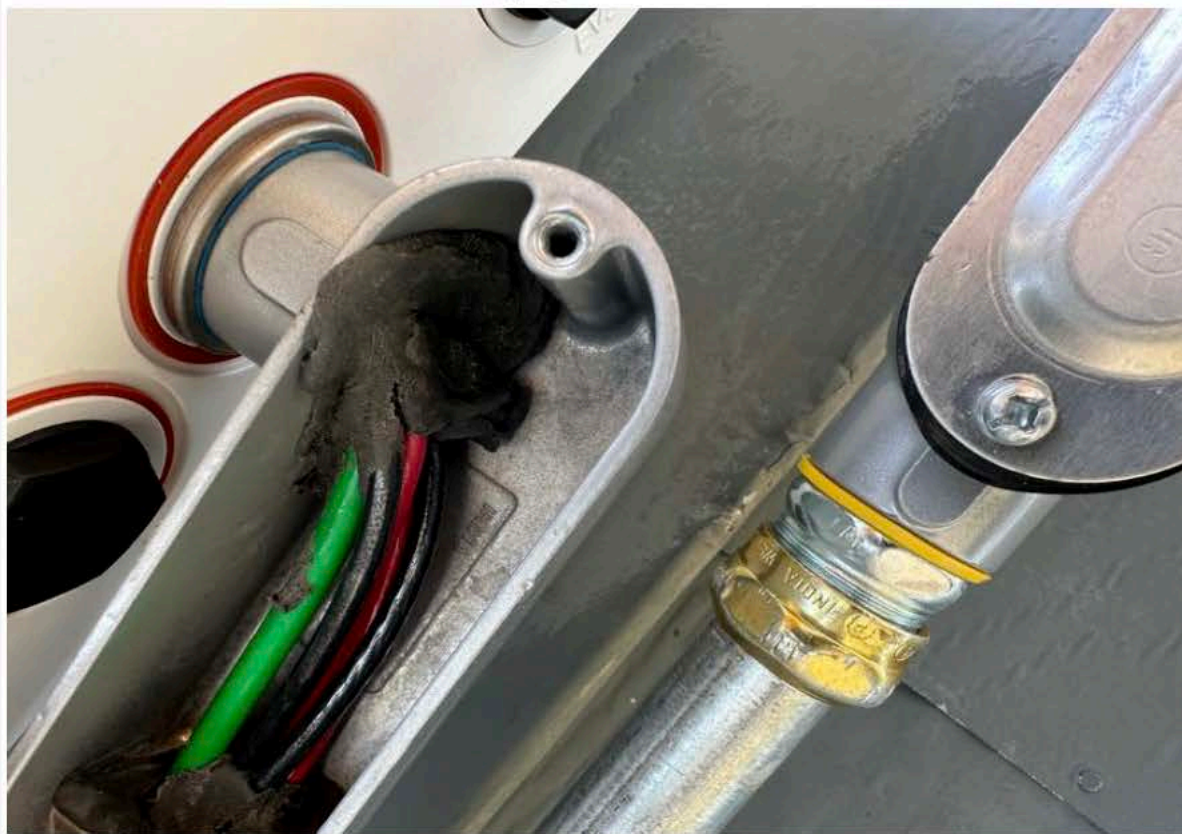
2023-08-15T13:44:53 IMG8660.jpeg



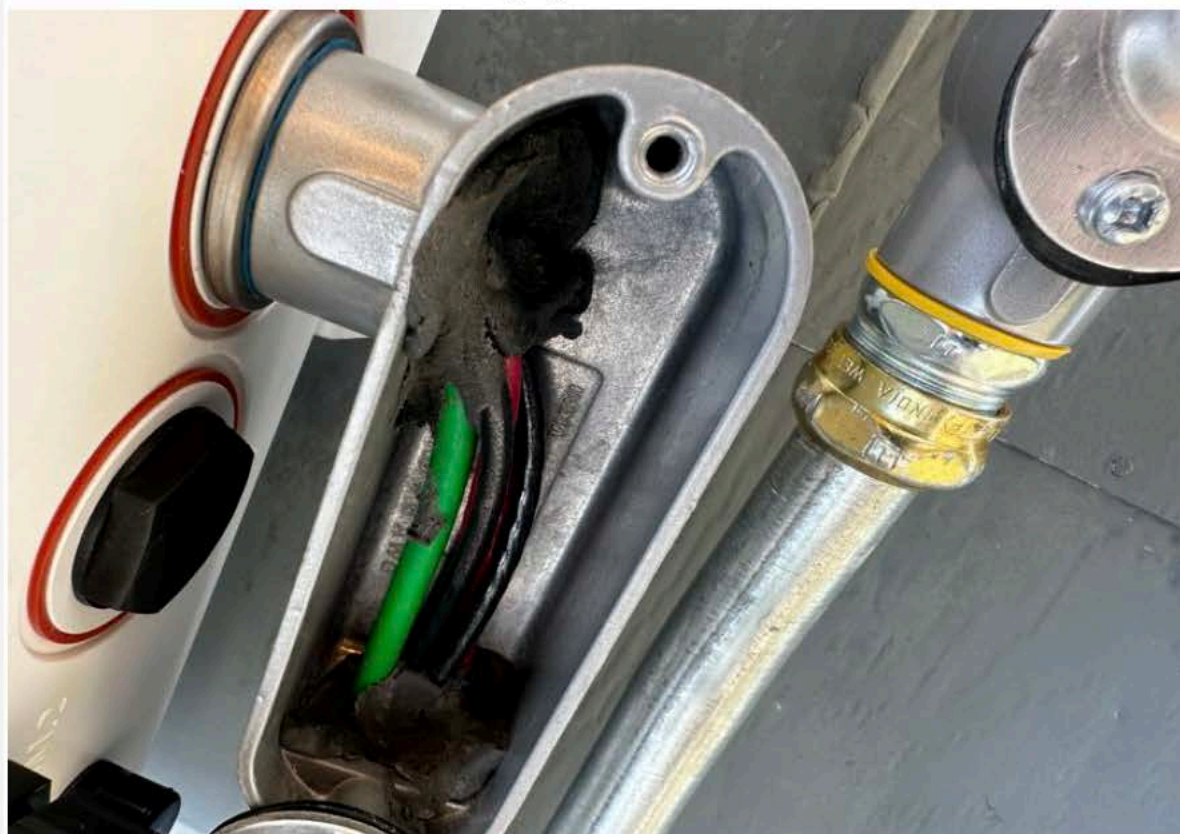
2023-08-15T14:10:24 IMG6378.jpeg



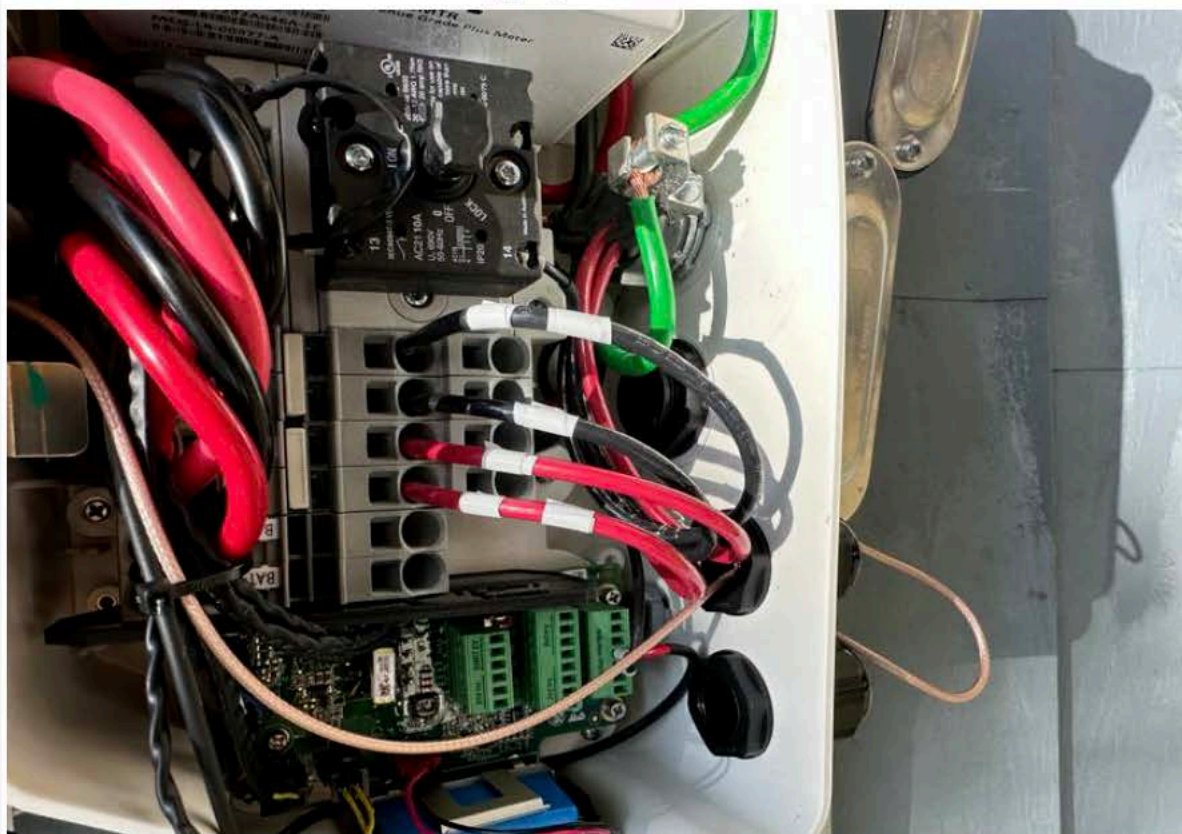
2023-08-15T14:10:26 IMG6379.jpeg



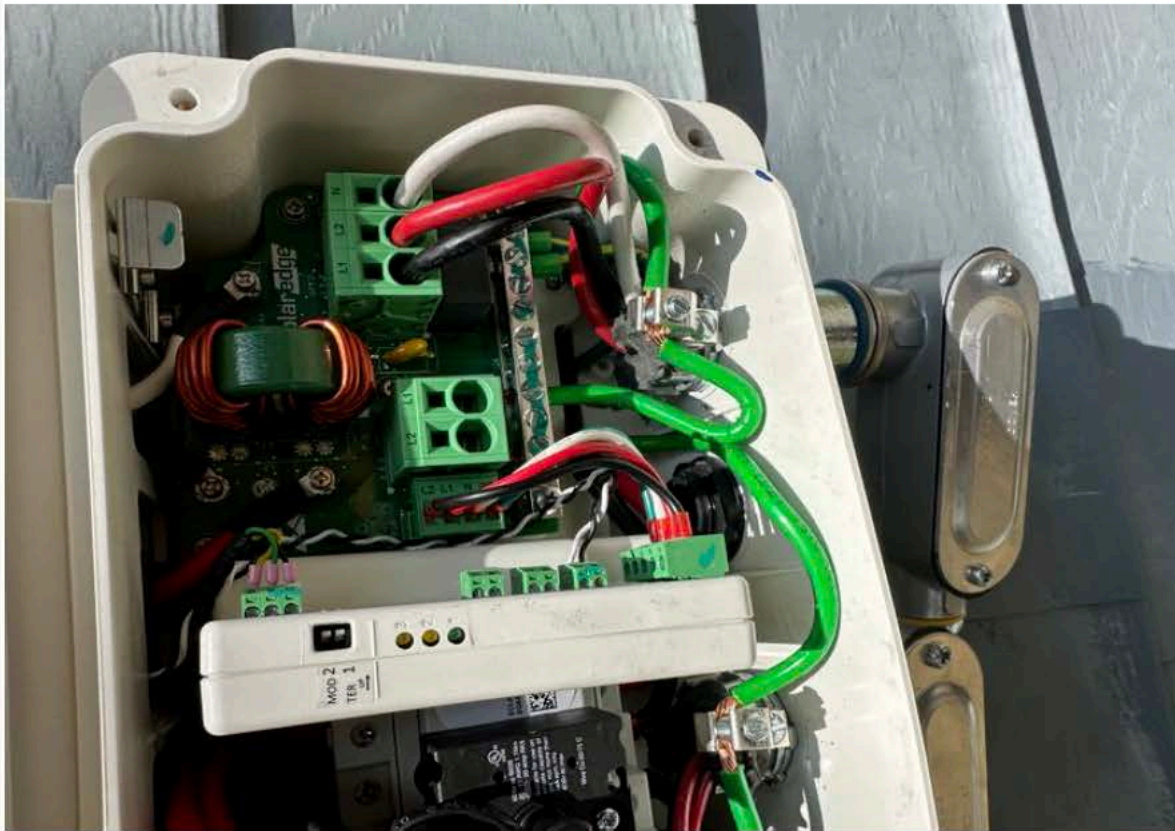
2023-08-15T14:10:27 IMG6380.jpeg



2023-08-15T14:12:22 IMG6381.jpeg



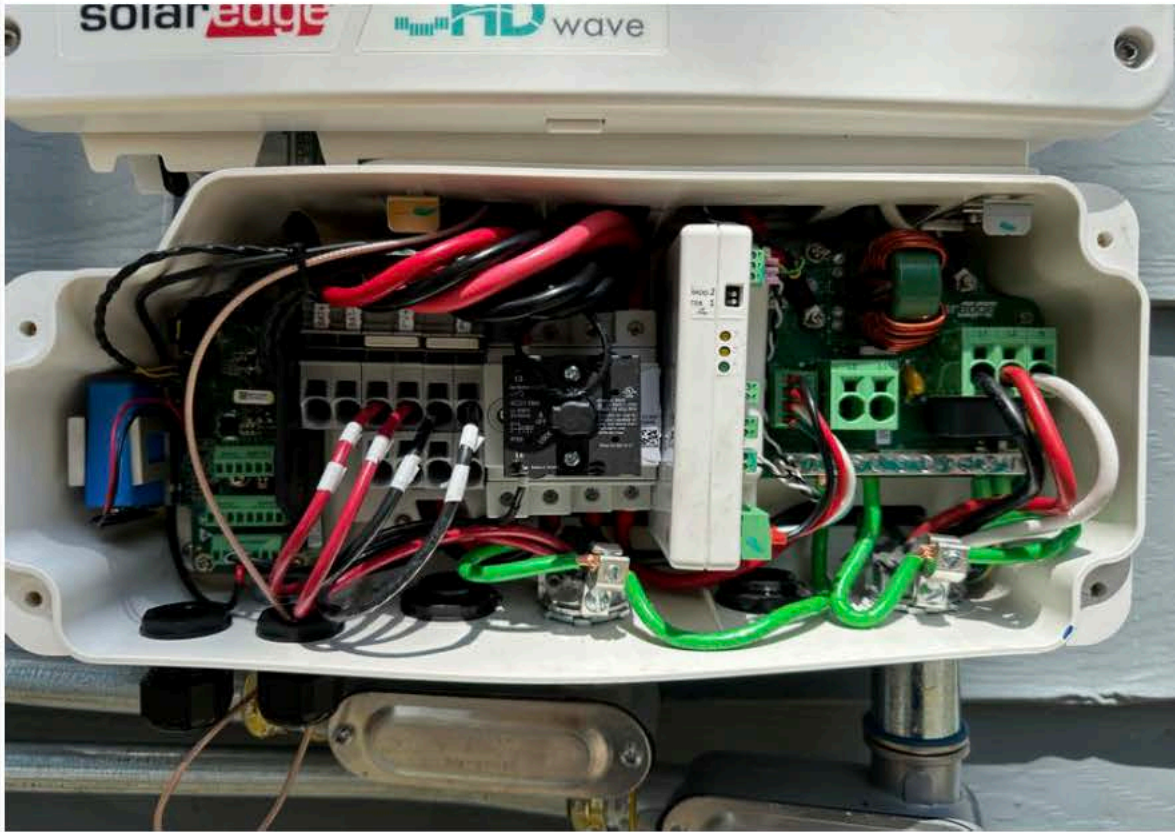
2023-08-15T14:12:24 IMG6382.jpeg



2023-08-15T14:12:26 IMG6383.jpeg

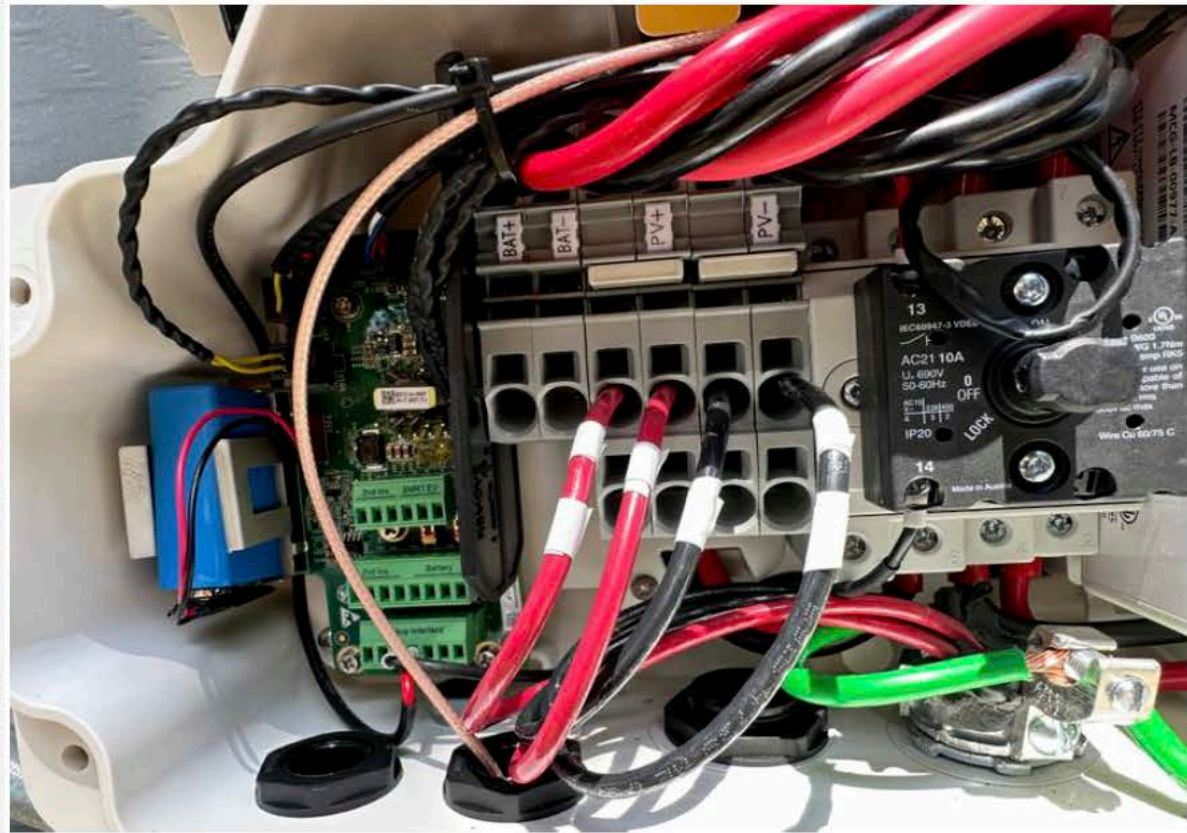
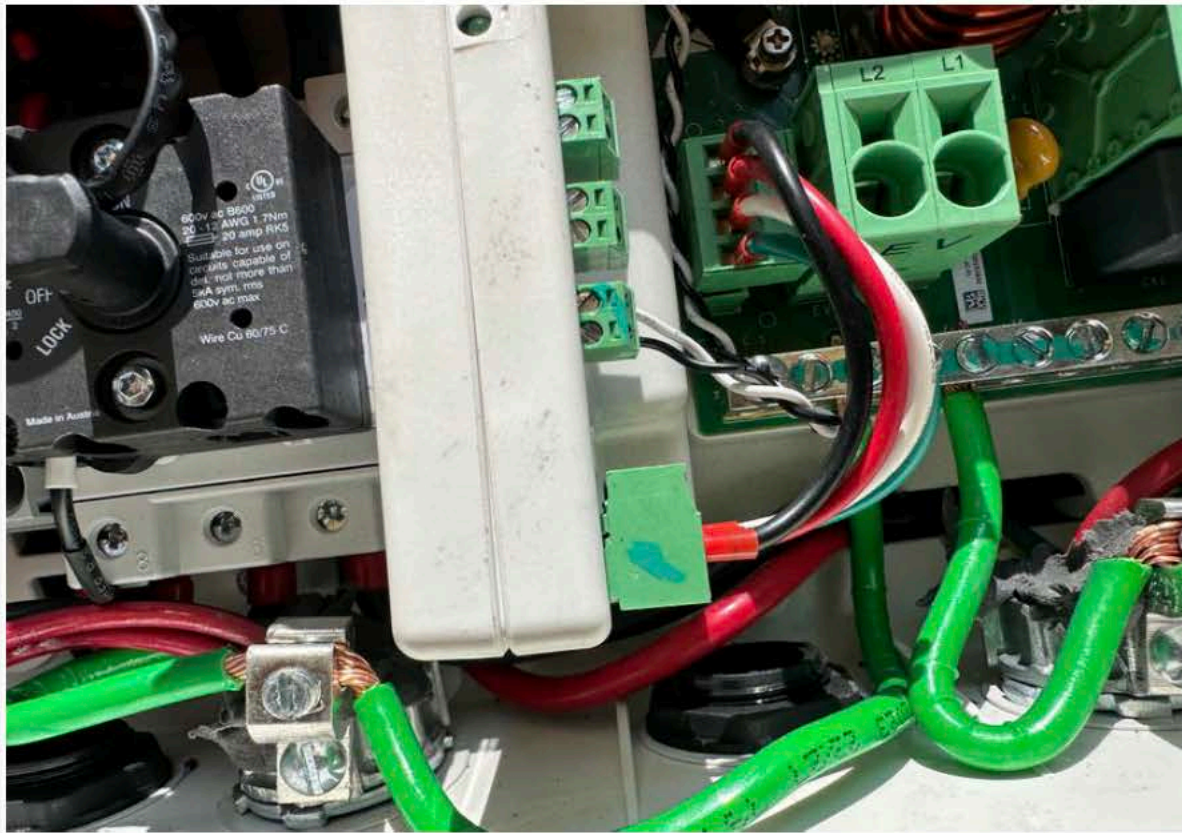


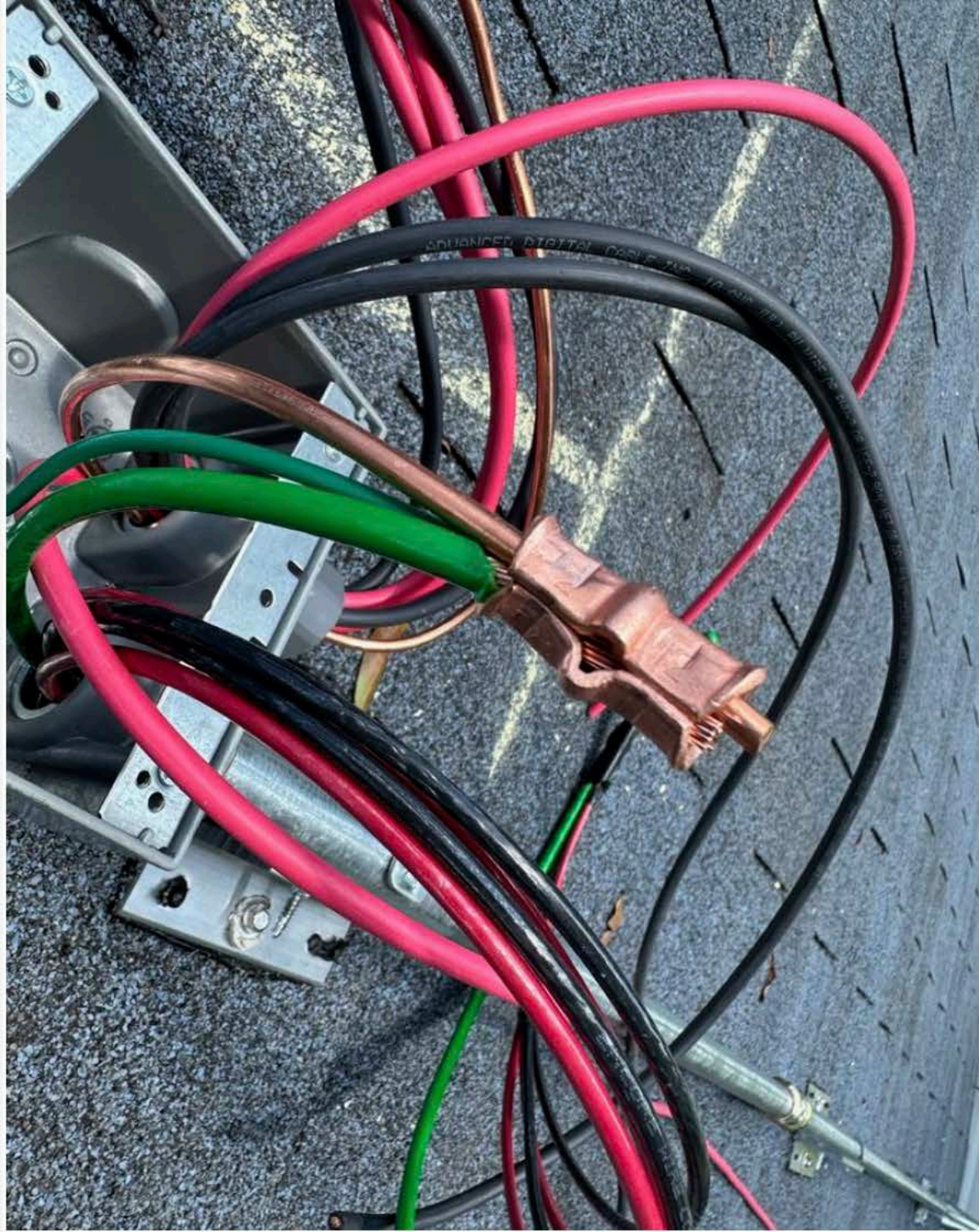
2023-08-15T14:12:27 IMG6384.jpeg



2023-08-15T14:12:30 IMG6385.jpeg







2023-08-15T14:24:13 IMG6389.jpeg



2023-08-15T14:24:14 IMG6390.jpeg

solar_{edge} SE7600H – US
**Grid Support Utility Interactive
 Non – Isolated Photovoltaic Inverter**

Operating Voltage Range	270 – 480Vdc
Max Input Current	20Adc
Max Continuous Output Power	7600Wac
Voltage Min – Nom – Max	211 – 240 – 264Vac
Max Continuous Output Current	32Aac
Max Output Fault Current	72Aac
Max Utility Backfeed Current	0Aac
Frequency Min – Nom – Max	59.3 – 60.0 – 60.5HZ
Output Power Factor	+/- 0.85 – 1
Max Ambient Temperature	60 C
Enclosure	IP65 / Type 3R
With integrated ground fault protection per NEC 690.35 (C)	
Type 1 Photovoltaic Aic – Fault Circuit – Protection	

WI – FI Password: b9D10zJt
 Activation: x3u3 xV1D ZYkK 7PLO UBgb 3c7W swY =

WIFI MAC:
 84:D6:C5:20:9D:17

ZigBee MAC:



PN: SE7600H – USSNBBL14
 SN: SJ4821 – 074058D07 – 0D



solar_{edge} SE7600H – US
**Grid Support Utility Interactive
 Non – Isolated Photovoltaic Inverter**

Operating Voltage Range	270 – 480Vdc
Max Input Current	20Adc
Max Continuous Output Power	7600Wac
Voltage Min – Nom – Max	211 – 240 – 264Vac
Max Continuous Output Current	32Aac
Max Output Fault Current	72Aac
Max Utility Backfeed Current	0Aac
Frequency Min – Nom – Max	59.3 – 60.0 – 60.5HZ
Output Power Factor	+/- 0.85 – 1
Max Ambient Temperature	60 C
Enclosure	IP65 / Type 3R
With integrated ground fault protection per NEC 690.35 (C)	
Type 1 Photovoltaic Aic – Fault Circuit – Protection	

WI – FI Password: b9D10zJt
 Activation: x3u3 xV1D ZYkK 7PLO UBgb 3c7W swY =

WIFI MAC:
 84:D6:C5:20:9D:17

ZigBee MAC:



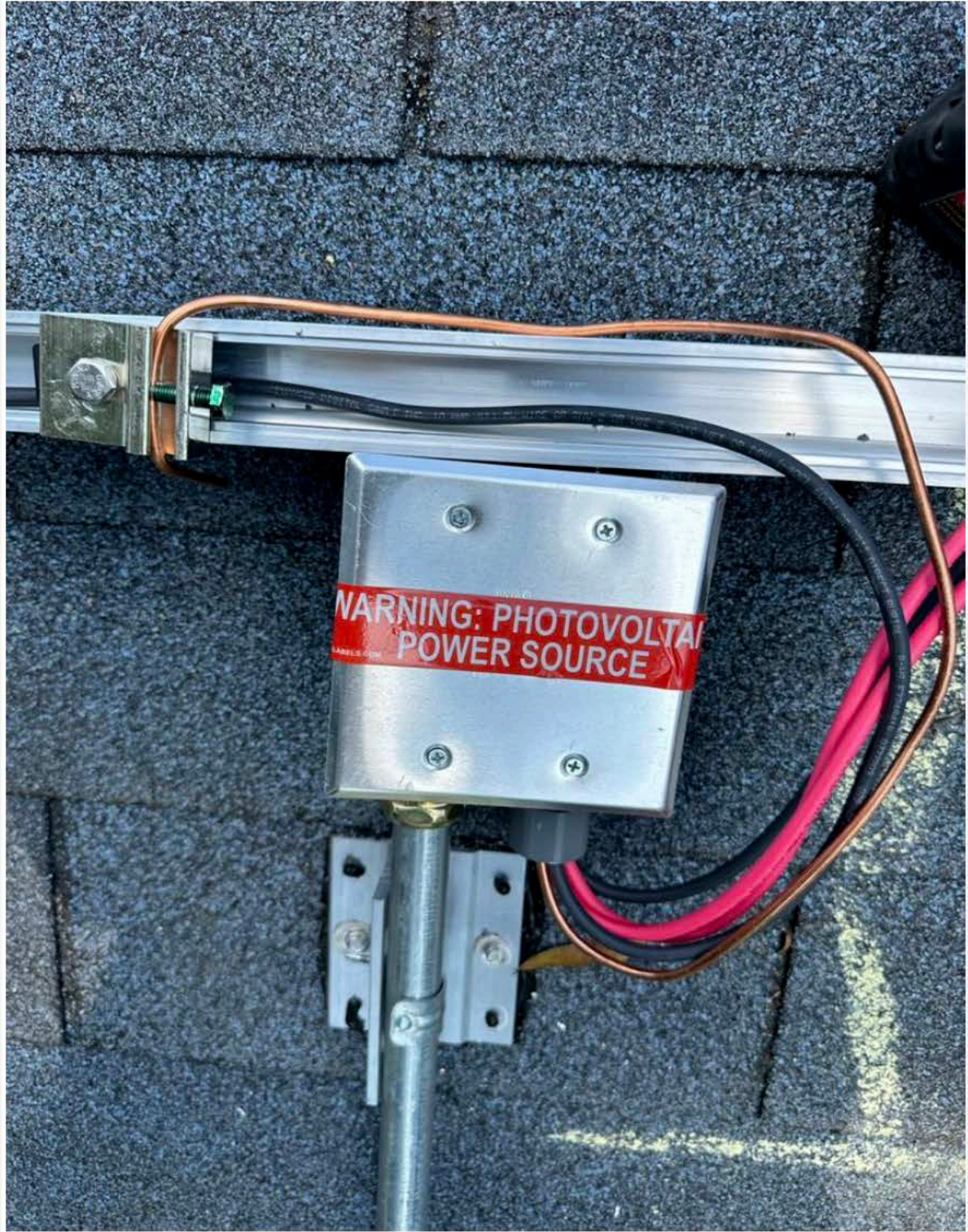
PN: SE7600H – USSNBBL14
 SN: SJ4821 – 074058D07 – 0D



2023-08-15T14:29:04 IMG4785.jpeg



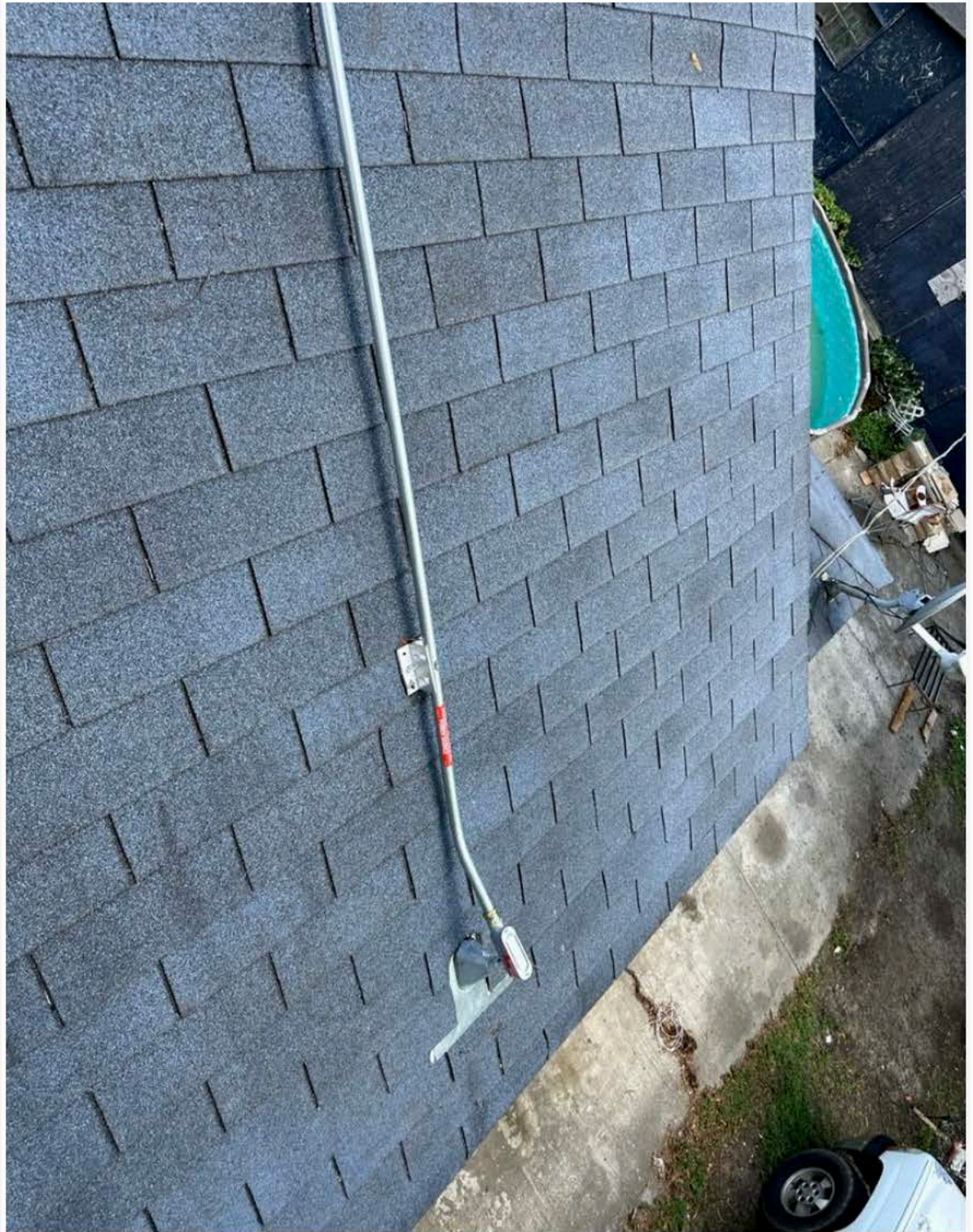
2023-08-15T14:32:34 IMG4786.jpeg



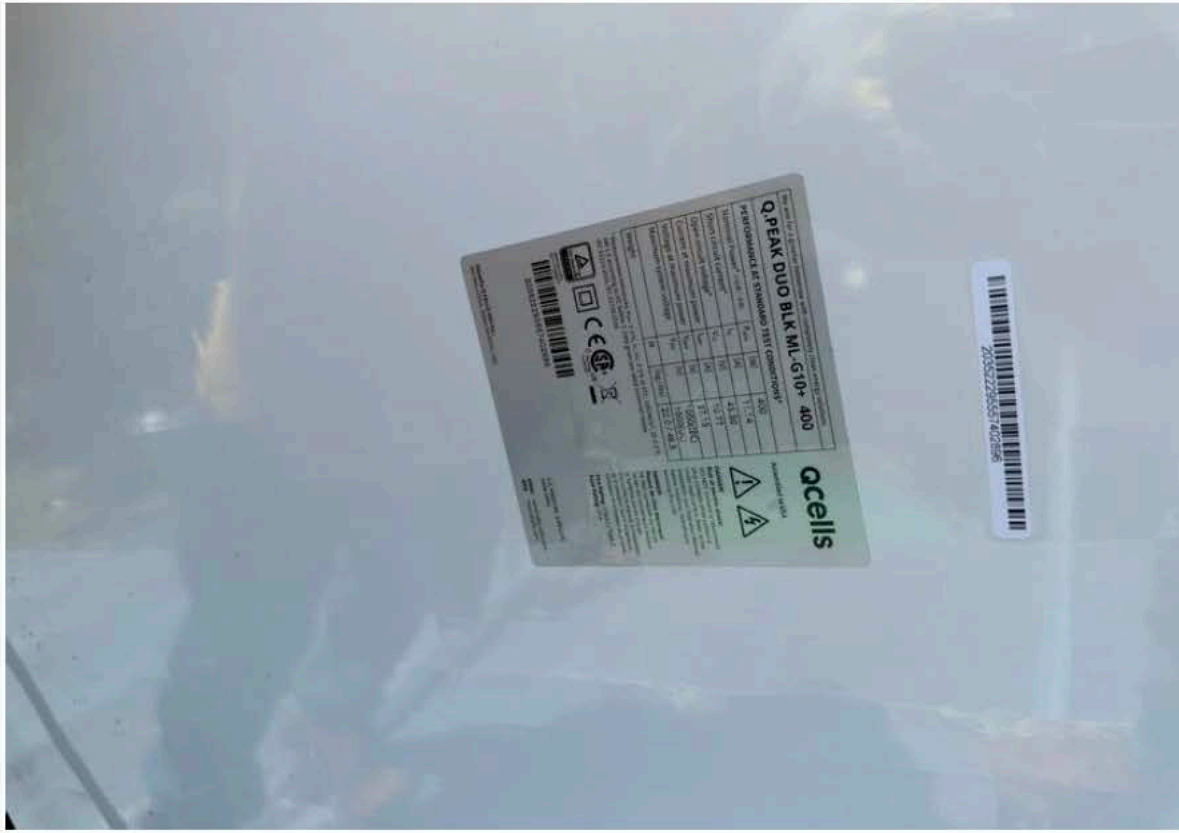
2023-08-15T14:36:11 IMG4787.jpeg



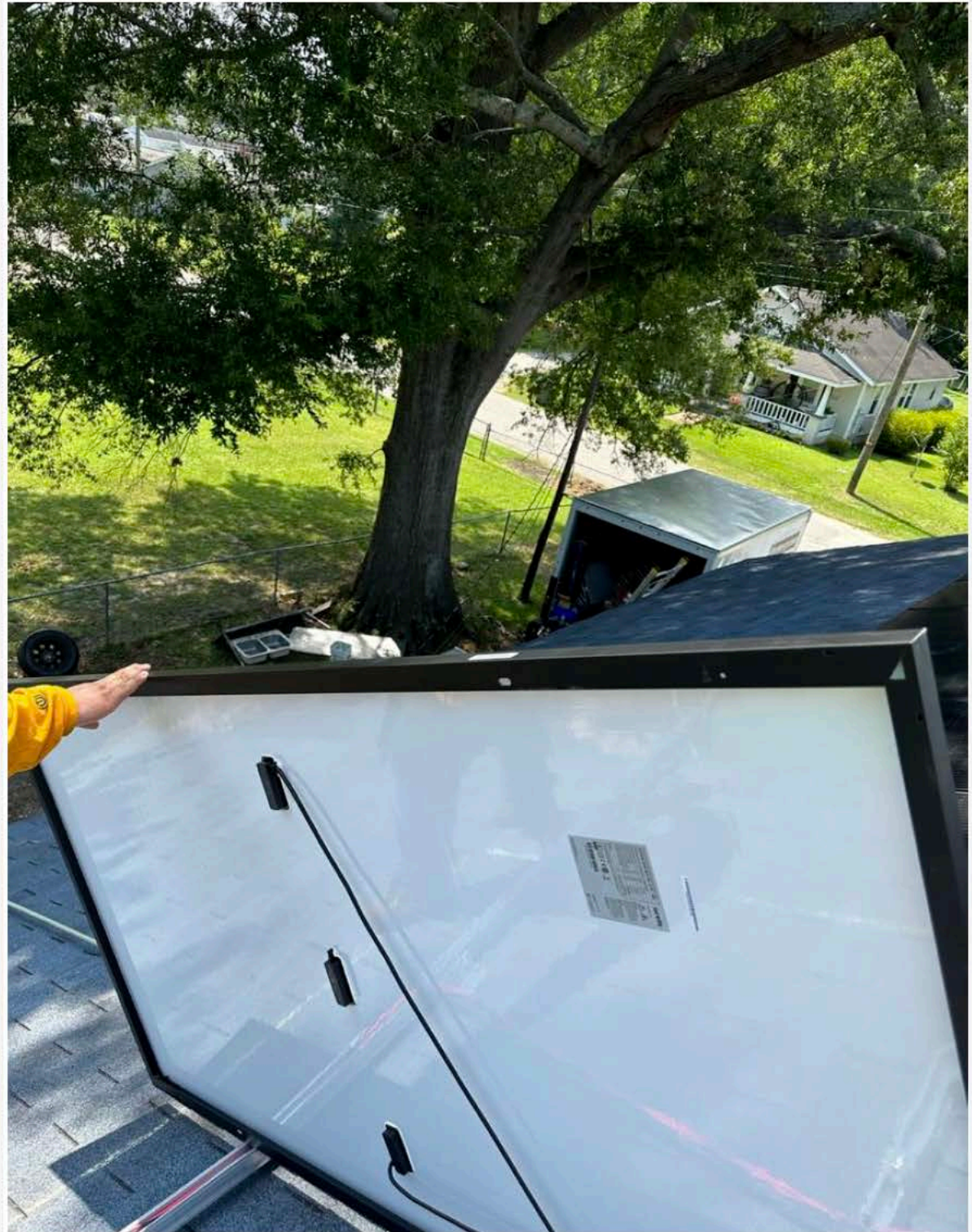
2023-08-15T14:36:15 IMG4788.jpeg



2023-08-15T14:47:03 IMG4789.jpeg



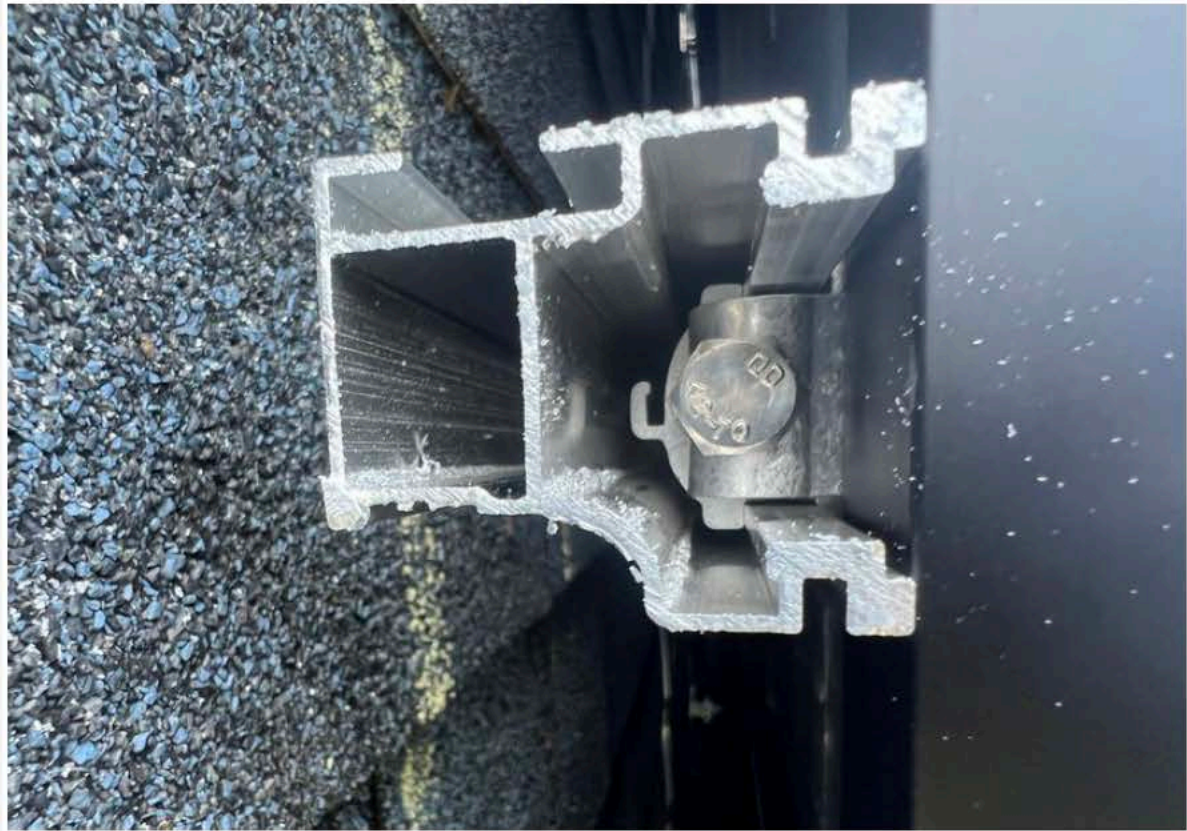
2023-08-15T14:47:16 IMG4790.jpeg



2023-08-15T14:51:17 IMG6396.jpeg



2023-08-15T14:56:12 IMG8661.jpeg



2023-08-15T14:56:14 IMG8662.jpeg



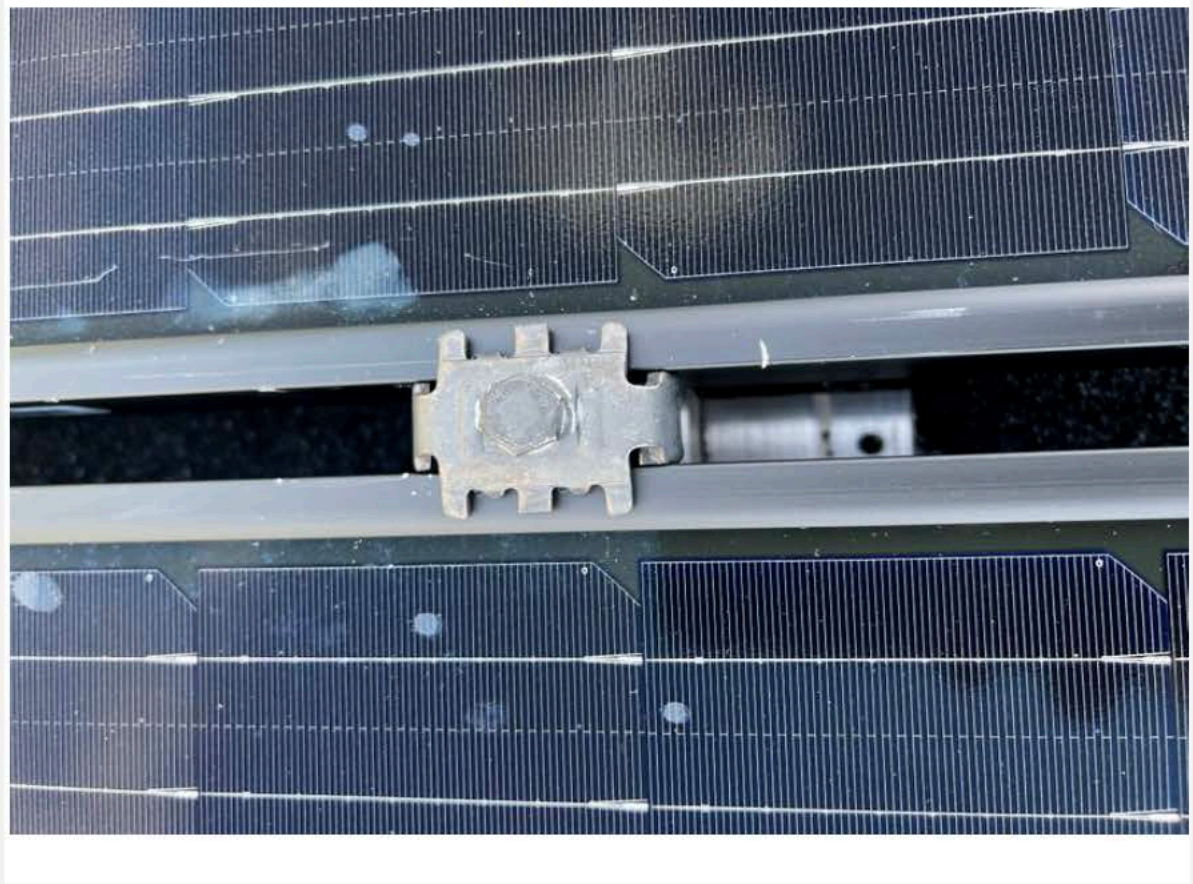
2023-08-15T14:56:42 IMG8663.jpeg



2023-08-15T14:57:16 IMG4794.jpeg



2023-08-15T14:57:17 IMG8667.jpeg





2023-08-15T14:57:29 IMG8669.jpeg



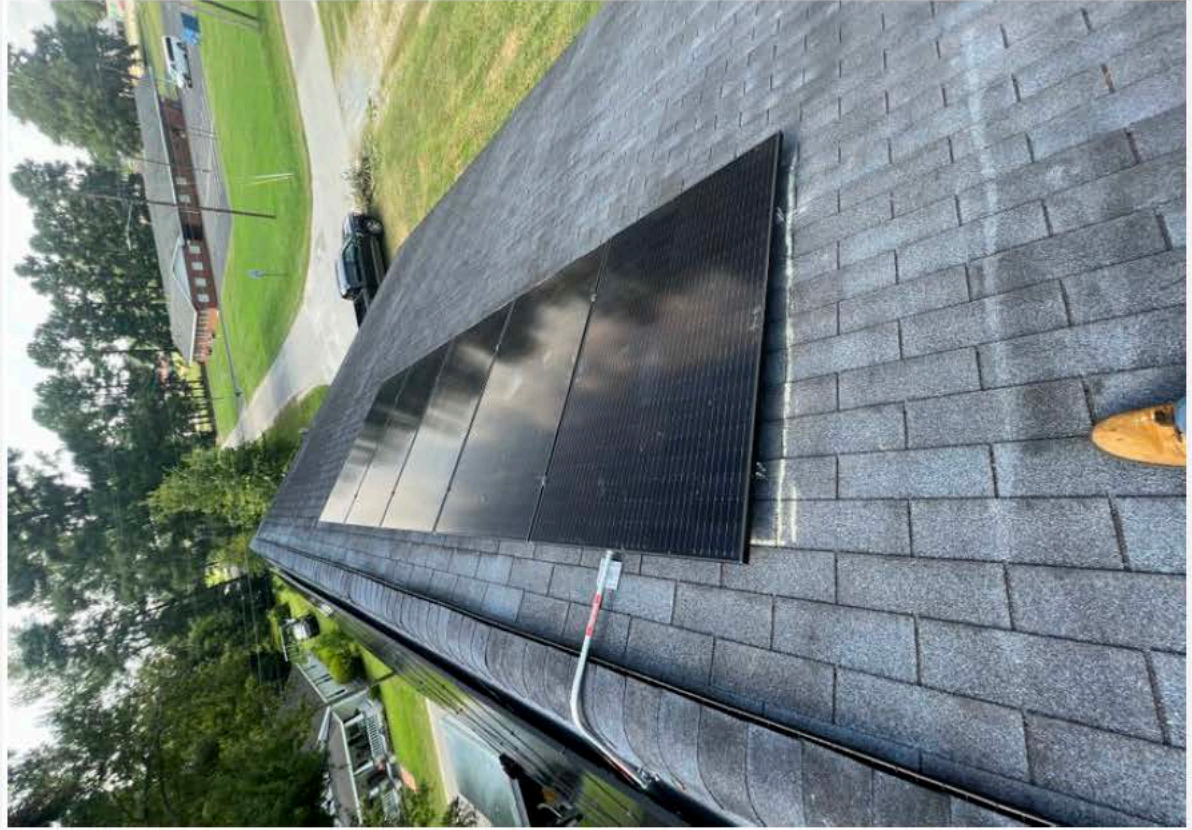
2023-08-15T14:58:20 IMG8670.jpeg



2023-08-15T14:58:27 IMG8671.jpeg



2023-08-15T14:58:41 IMG8672.jpeg



2023-08-15T14:58:46 IMG8673.jpeg



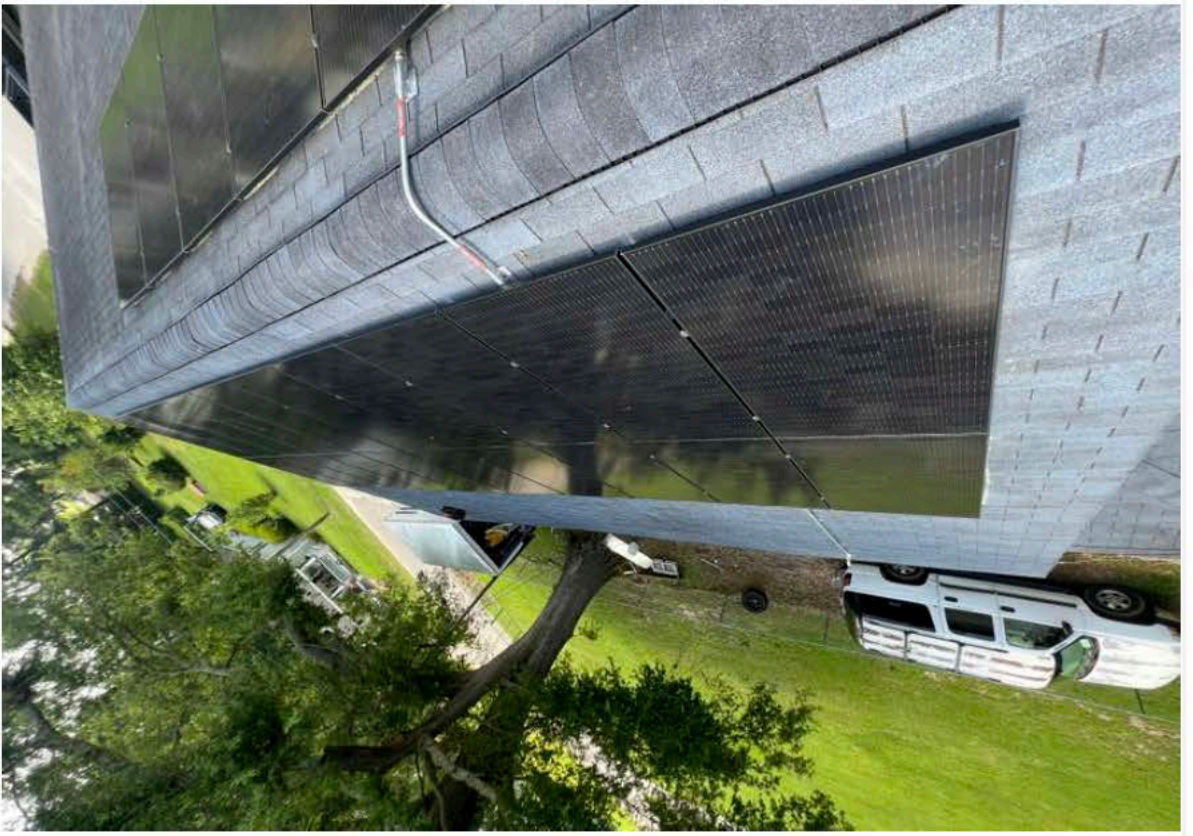
2023-08-15T14:58:55 IMG8674.jpeg



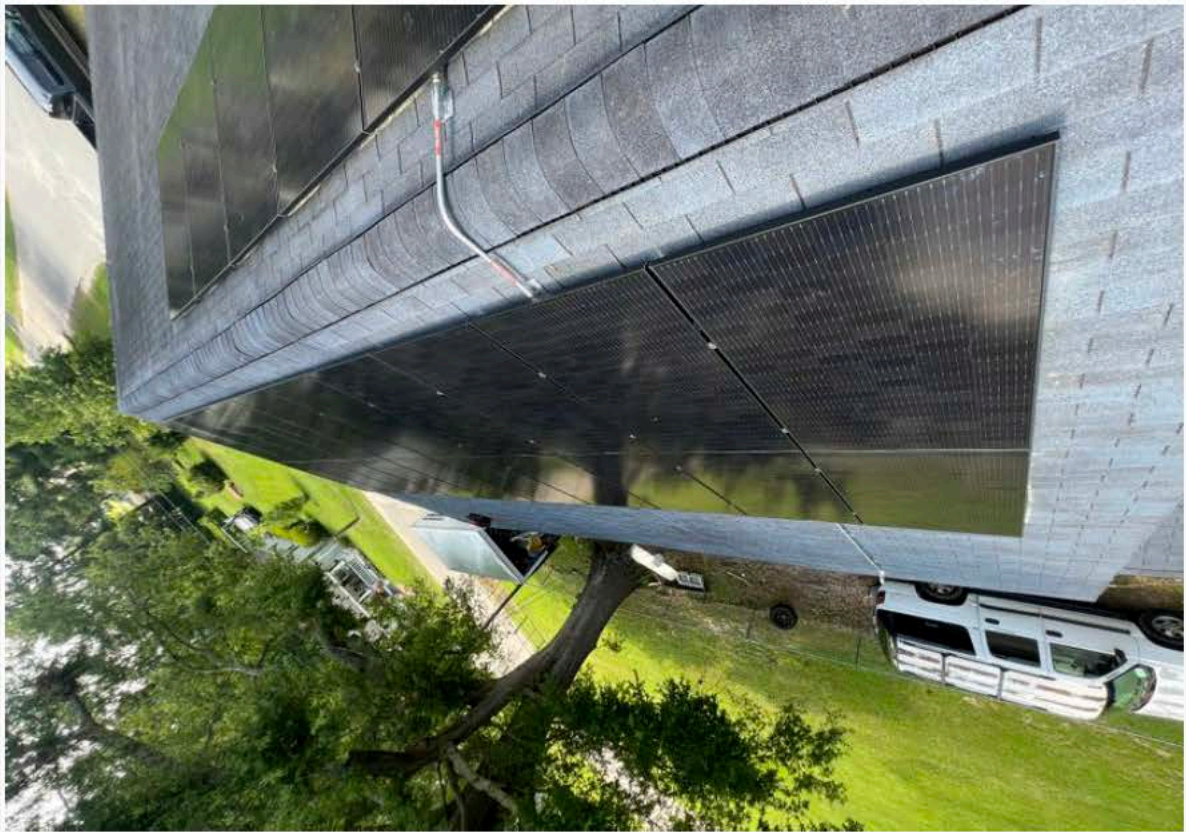
2023-08-15T14:59:00 IMG8675.jpeg



2023-08-15T14:59:04 IMG8676.jpeg



2023-08-15T14:59:05 IMG8677.jpeg



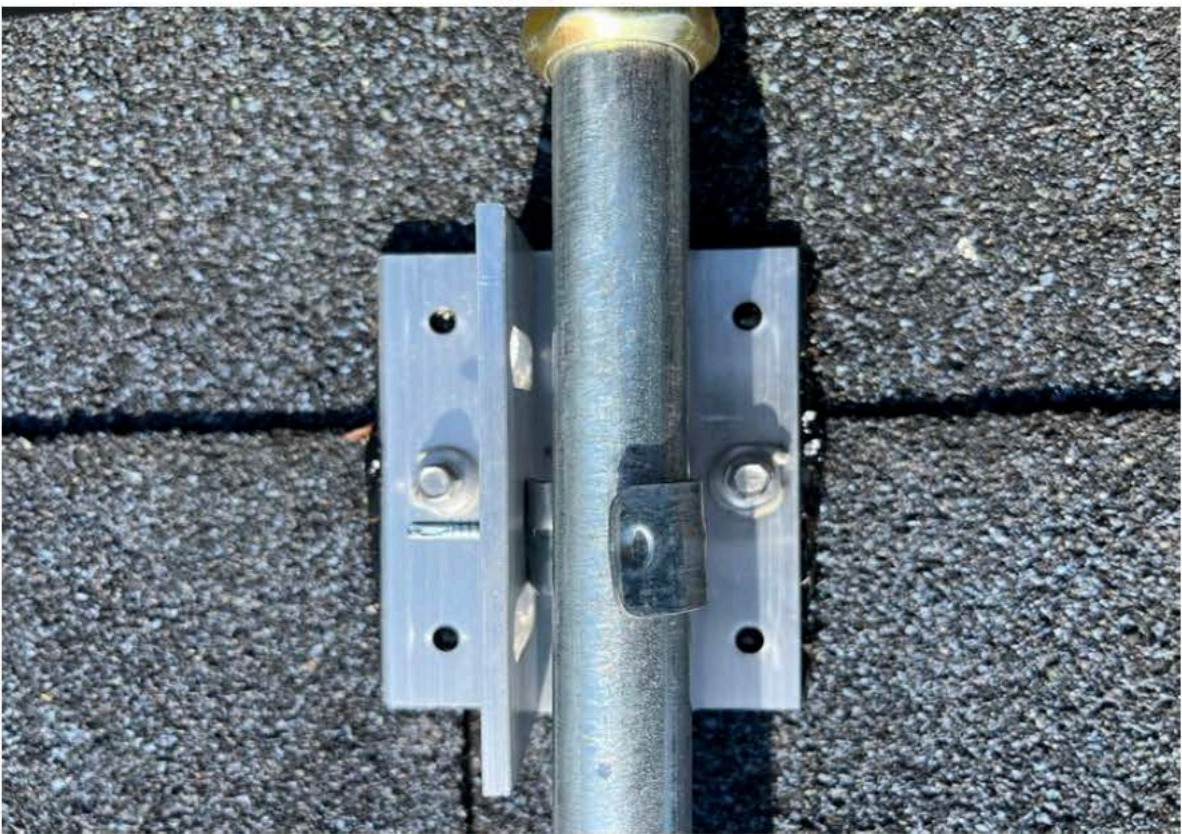
2023-08-15T14:59:25 IMG8678.jpeg



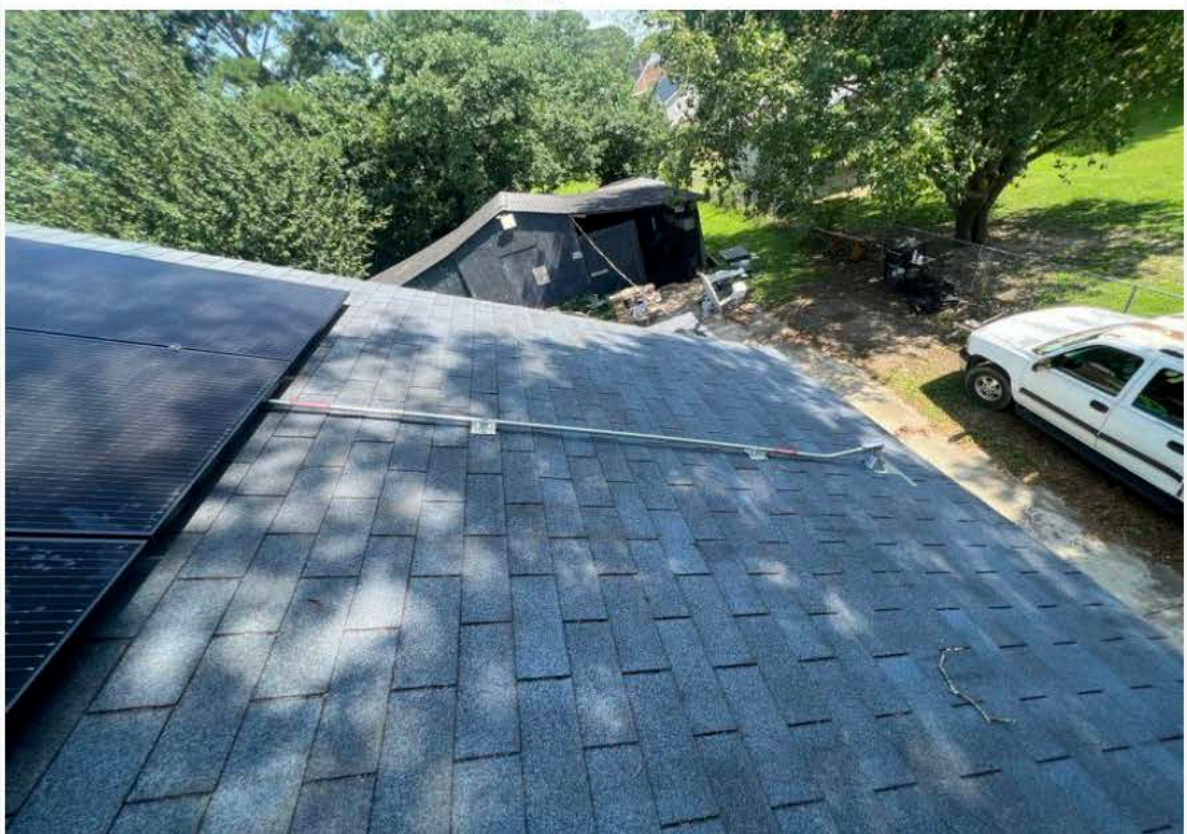
2023-08-15T14:59:37 IMG8679.jpeg



2023-08-15T14:59:43 IMG8680.jpeg



2023-08-15T15:00:32 IMG8681.jpeg



2023-08-15T15:01:05 IMG8682.jpeg



2023-08-15T15:01:26 IMG8689.jpeg



2023-08-15T15:05:49 IMG6410.jpeg

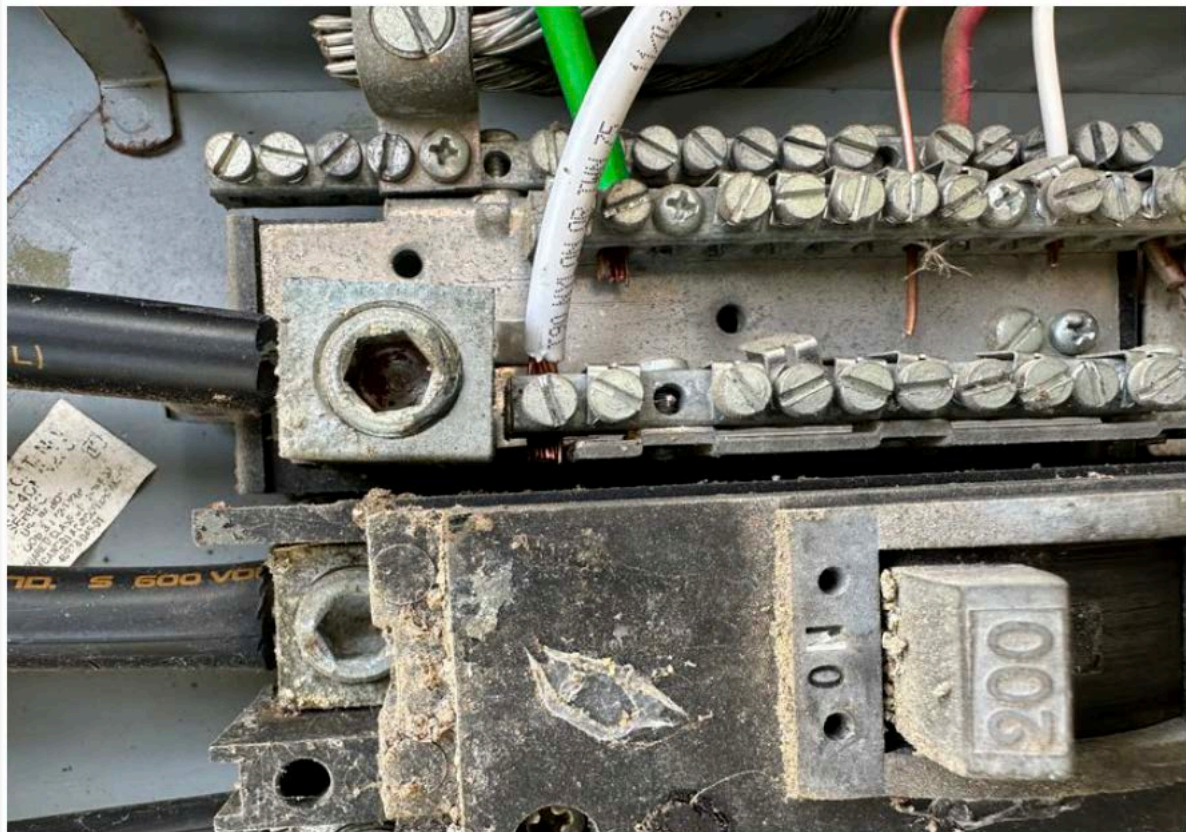


2023-08-15T15:05:51 IMG6411.jpeg

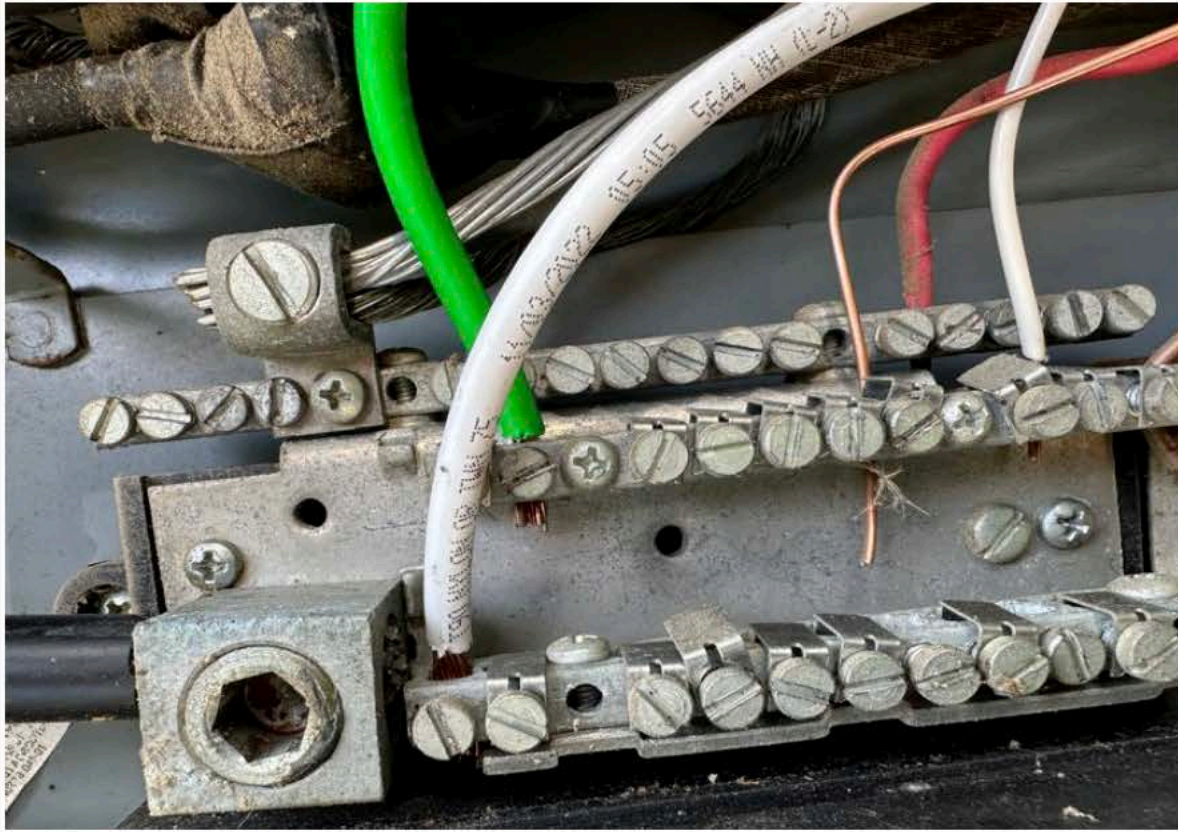


2023-08-15T15:05:56 IMG6412.jpeg





2023-08-16T10:09:05 IMG6424.jpeg



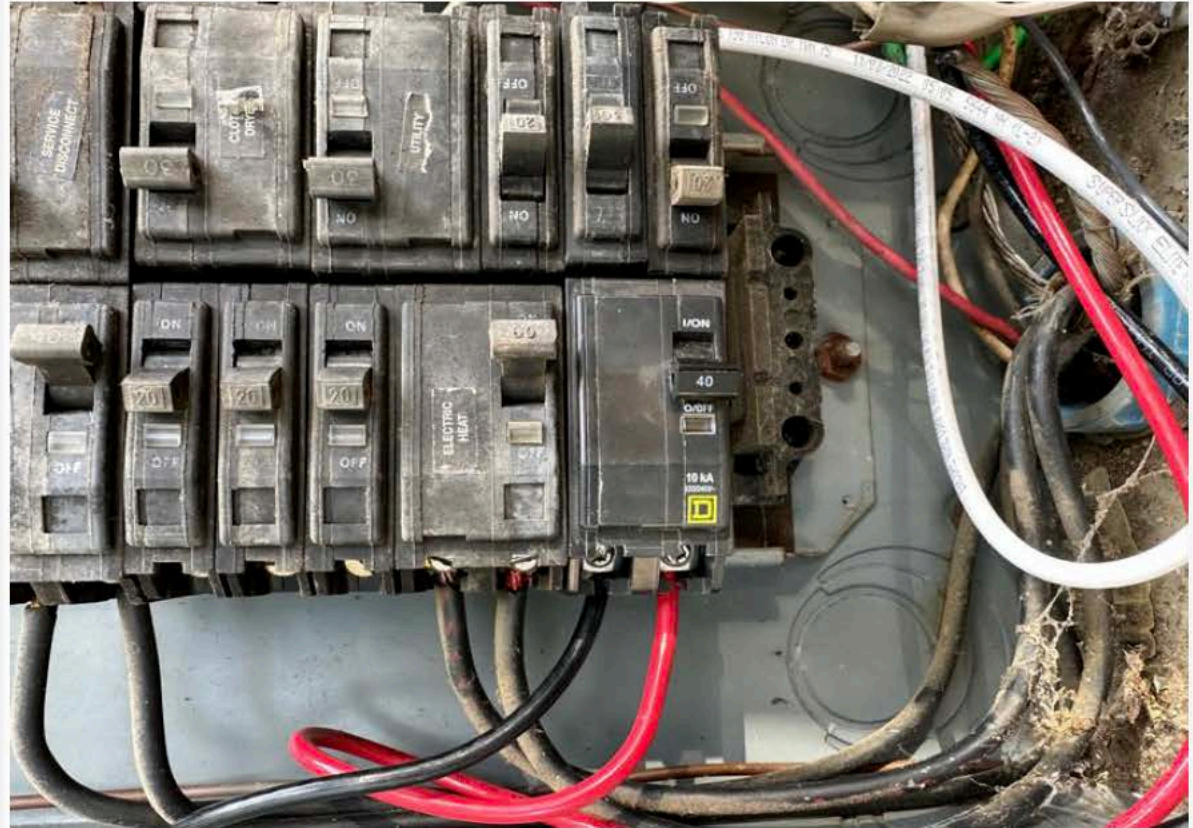
2023-08-16T10:09:08 IMG6425.jpeg



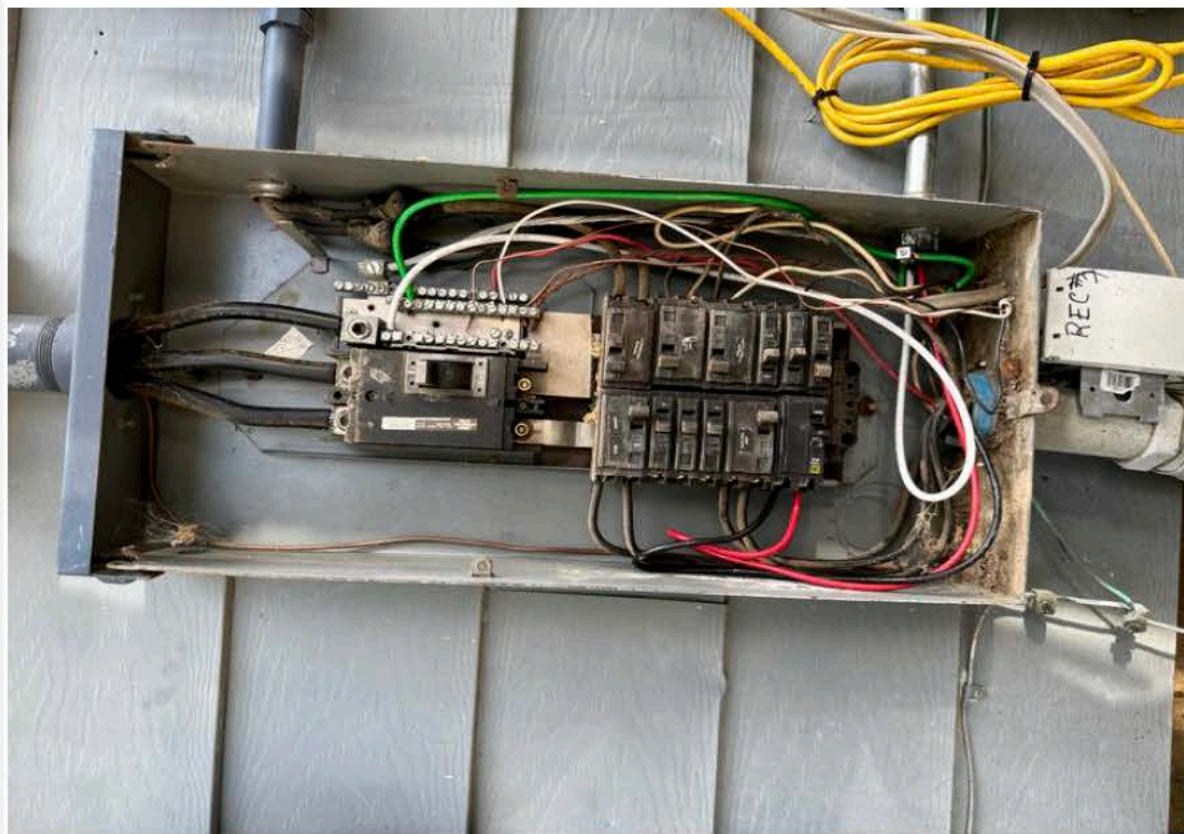
2023-08-16T10:09:20 IMG6426.jpeg



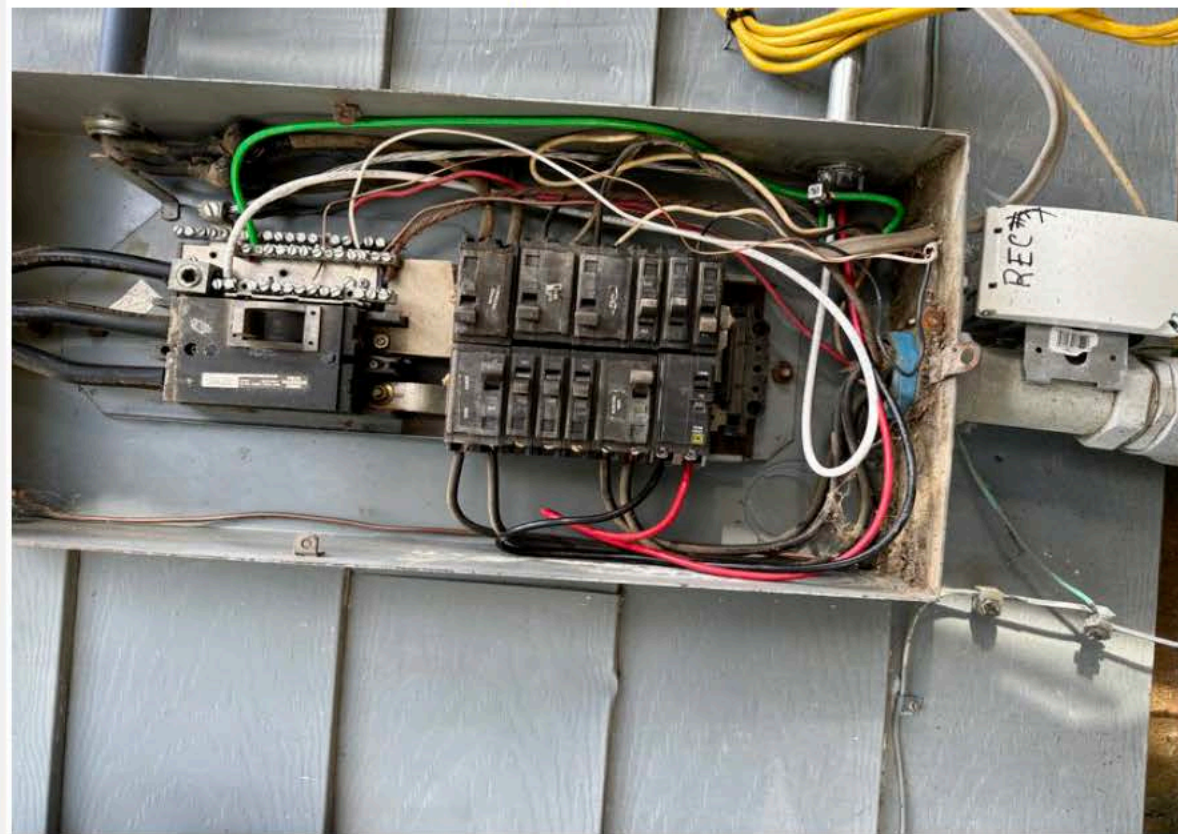
2023-08-16T10:09:23 IMG6427.jpeg



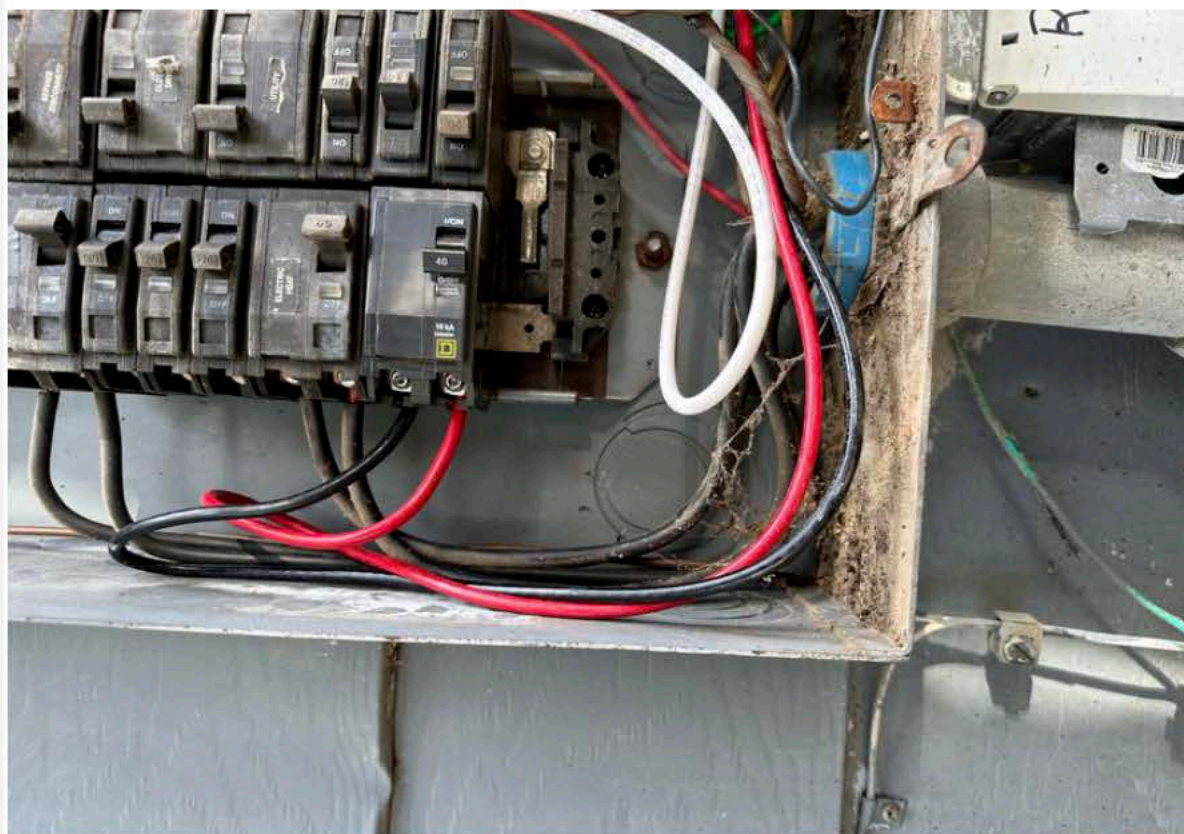
2023-08-16T10:09:28 IMG6428.jpeg



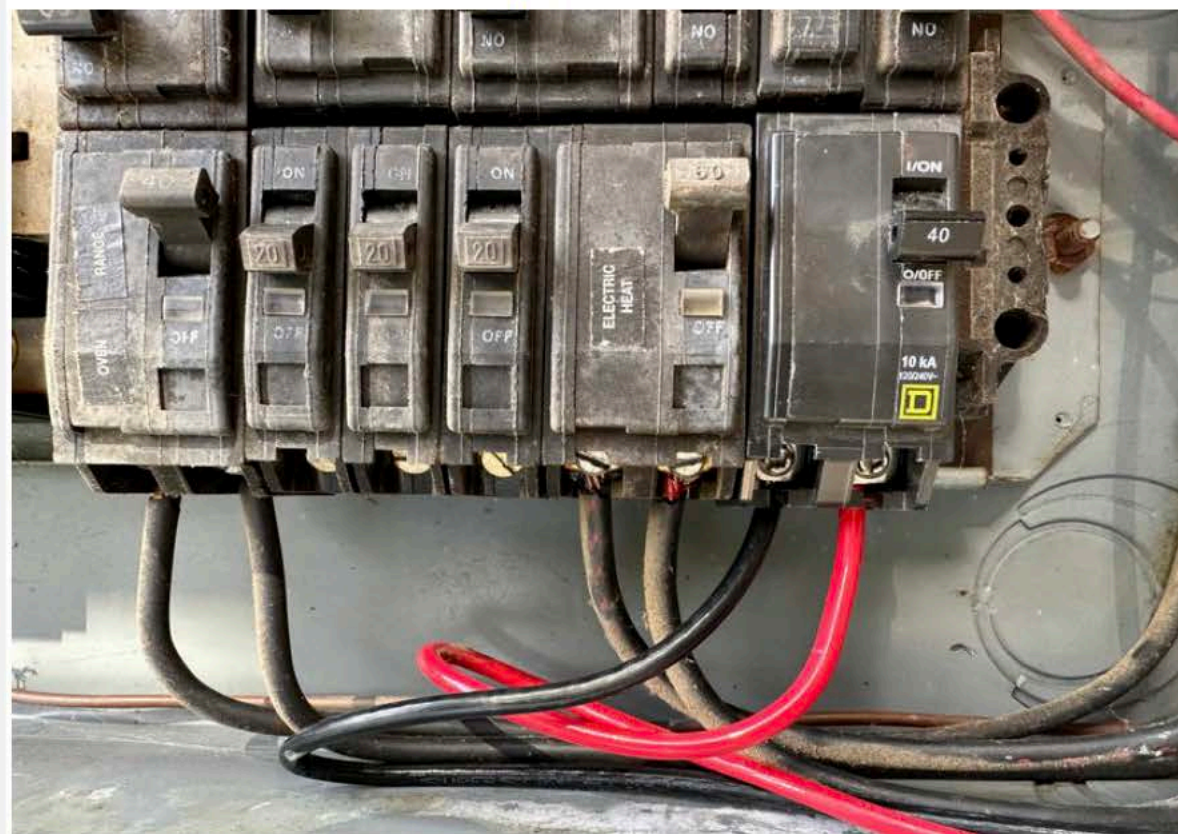
2023-08-16T10:09:30 IMG6429.jpeg



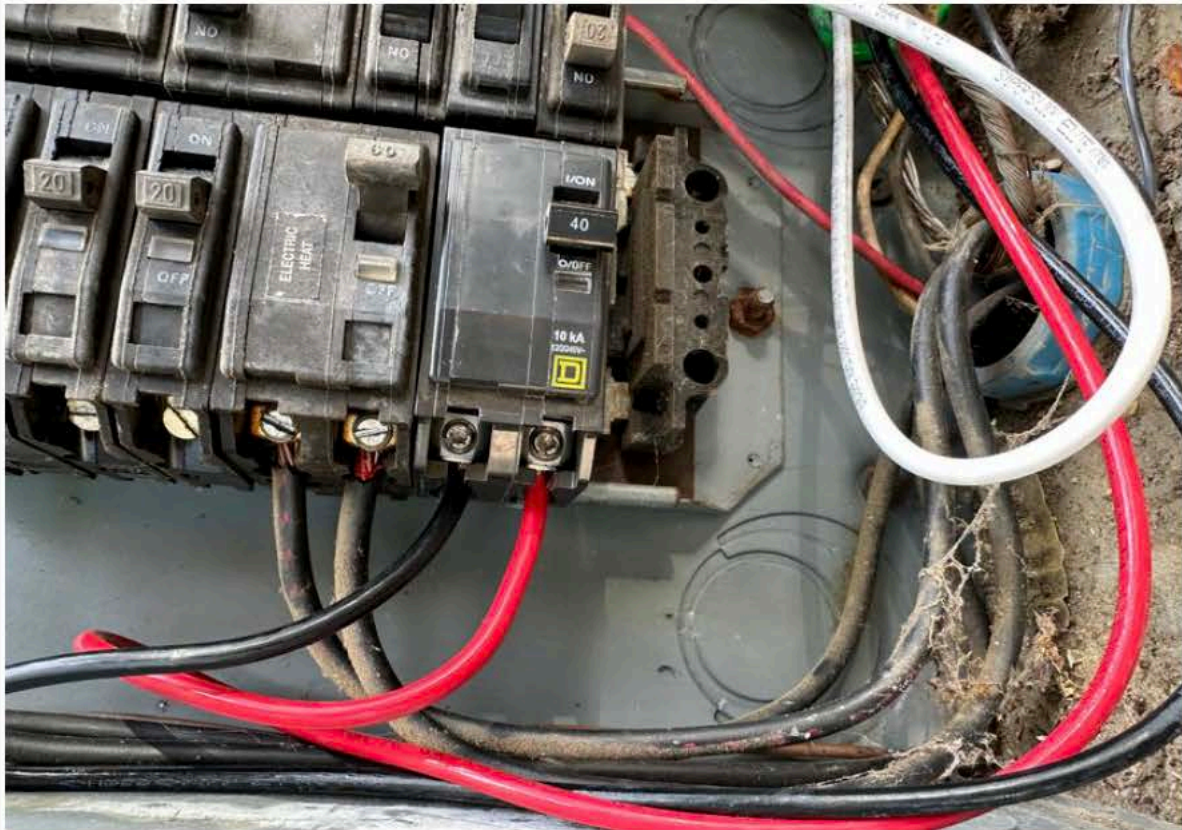
2023-08-16T10:09:31 IMG6430.jpeg



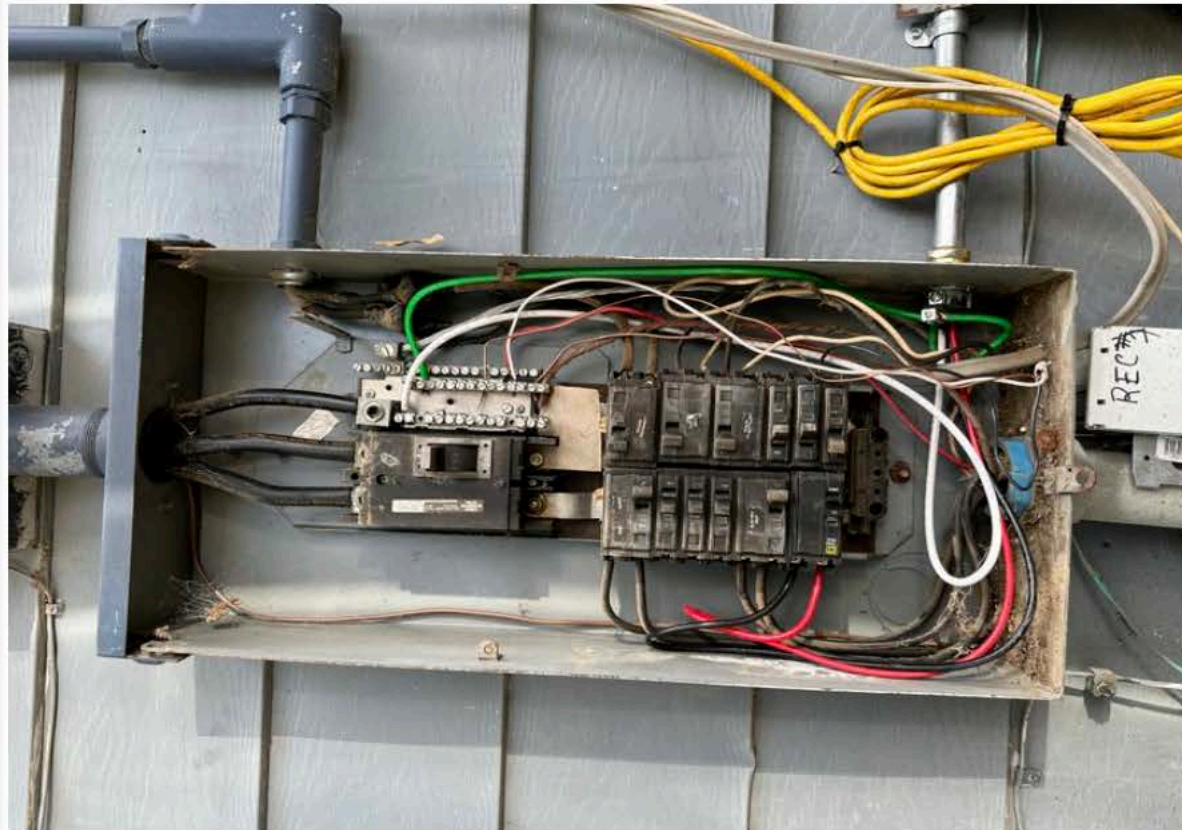
2023-08-16T10:09:33 IMG6431.jpeg



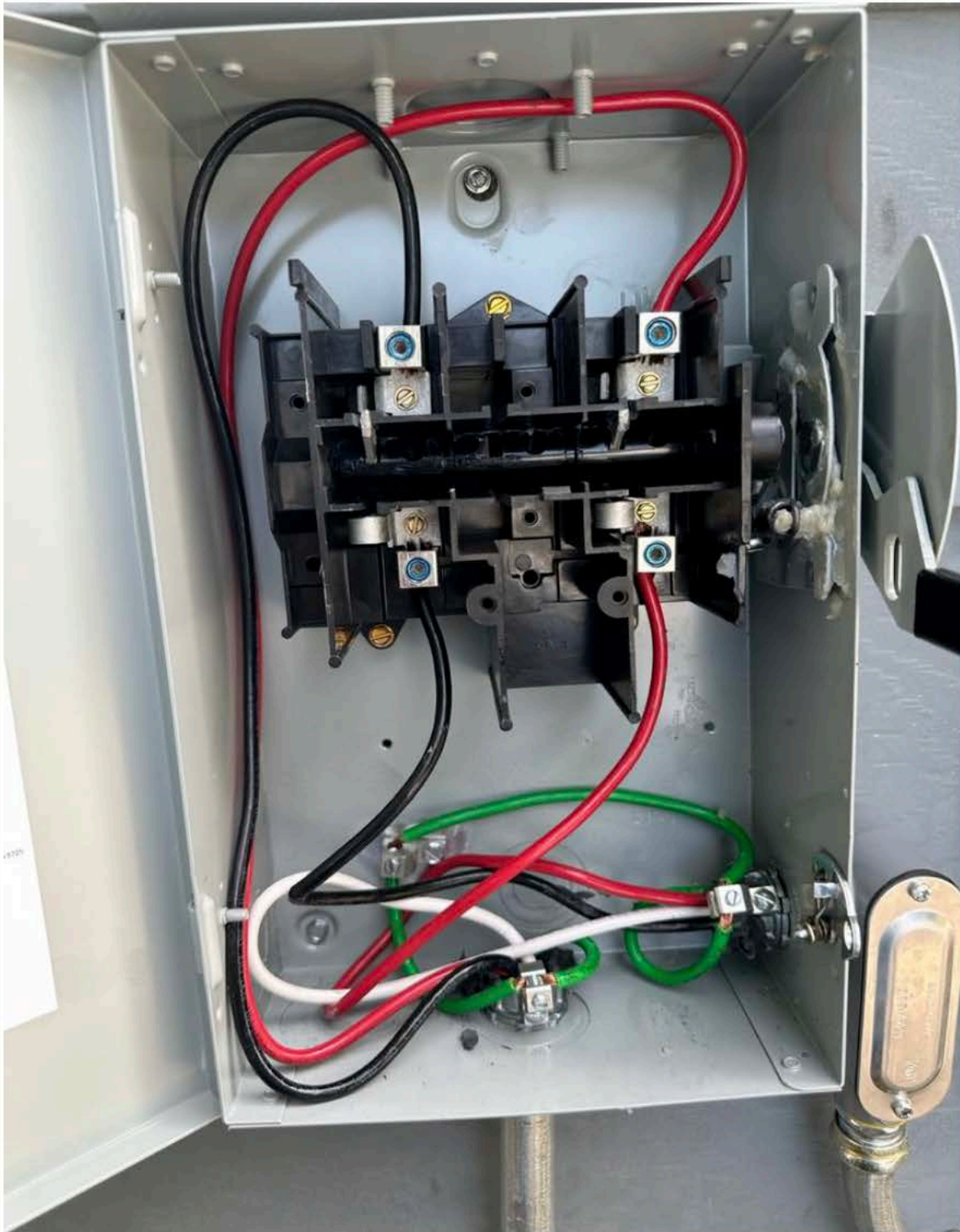
2023-08-16T10:09:37 IMG6432.jpeg



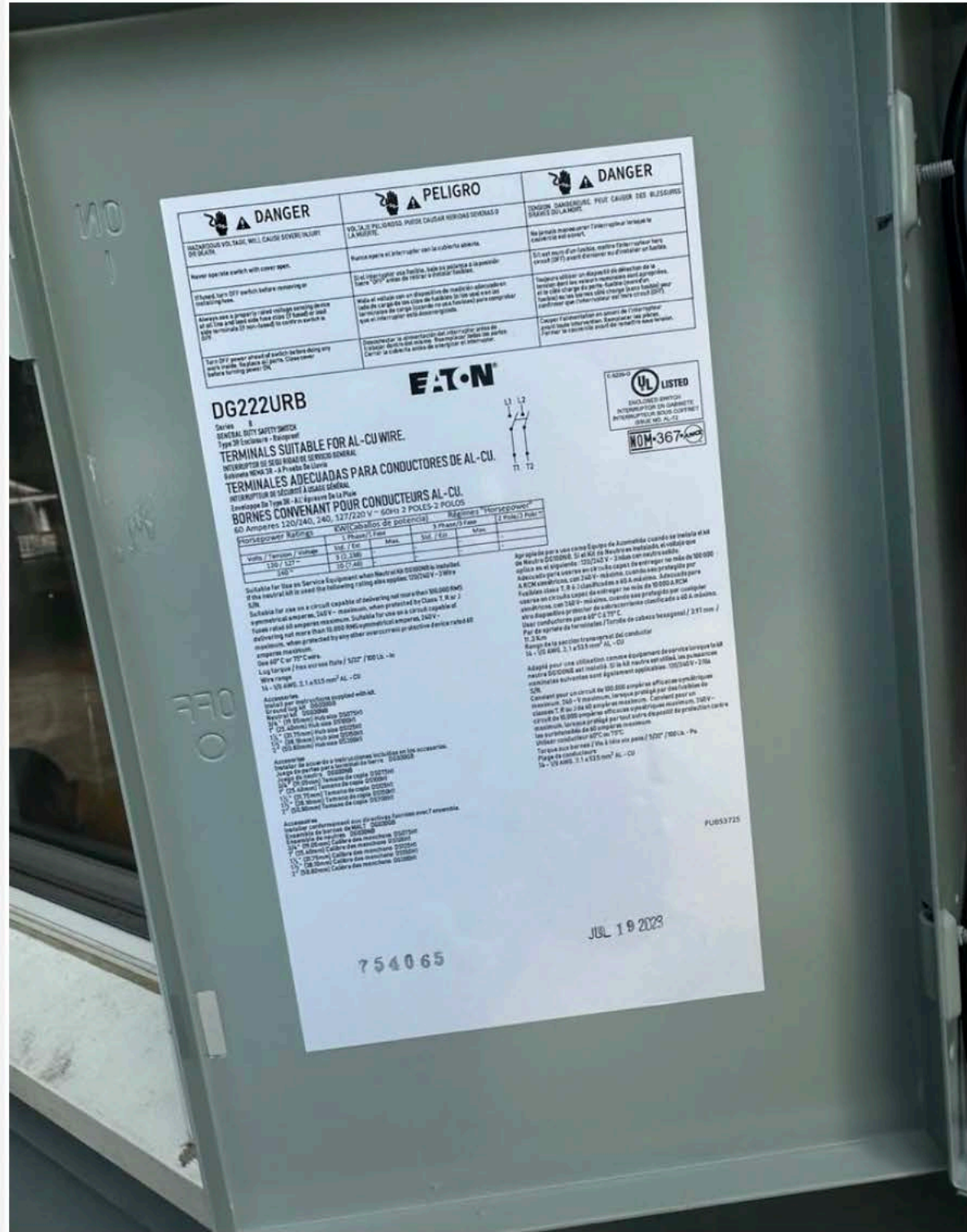
2023-08-16T10:09:40 IMG6433.jpeg



2023-08-16T10:13:20 IMG4796.jpeg



2023-08-16T10:13:23 IMG4797.jpeg





2023-08-16T10:13:41 IMG4800.jpeg



2023-08-16T10:15:57 IMG6434.jpeg



2023-08-16T10:16:01 IMG6435.jpeg



2023-08-16T10:16:04 IMG6436.jpeg



- Projects
 - Apply for New Project
 - Search Projects
 - Pay Fees
- Contractors
- Properties
 - Search Property
- Inspections
 - Schedule
 - Cancel
 - Scheduled
- Violations
 - Search
 - Pay Fees
- Report An Issue
 - Report Issue
- Shopping Cart
 - Pay All Fees
 - Paid Items
- Contact
 - Contact us

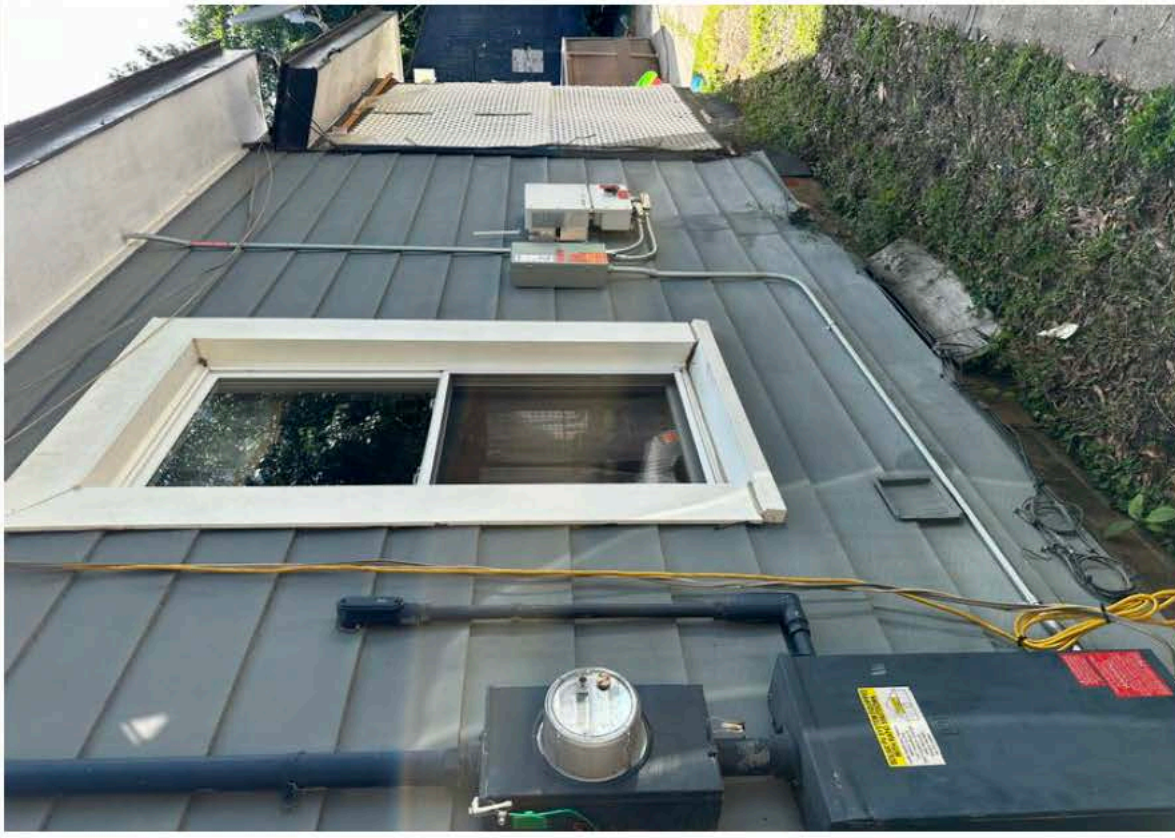
Permit #ERES2307-0048

Attachment Permit Attachment Permit

- Permit Info
- Site Info
- Contacts
- Fees \$0.00
- Inspections
- Chronology

Type: ELECTRICAL RESIDENTIAL
Subtype: RESIDENTIAL SOLAR PANELS
Short Description: 25 roof mounted solar panels
Status: APPROVED
Applied Date: 7/21/2023
Approved Date: 8/25/2023
Issued Date: 8/4/2023
Final Date:
Expiration Date:

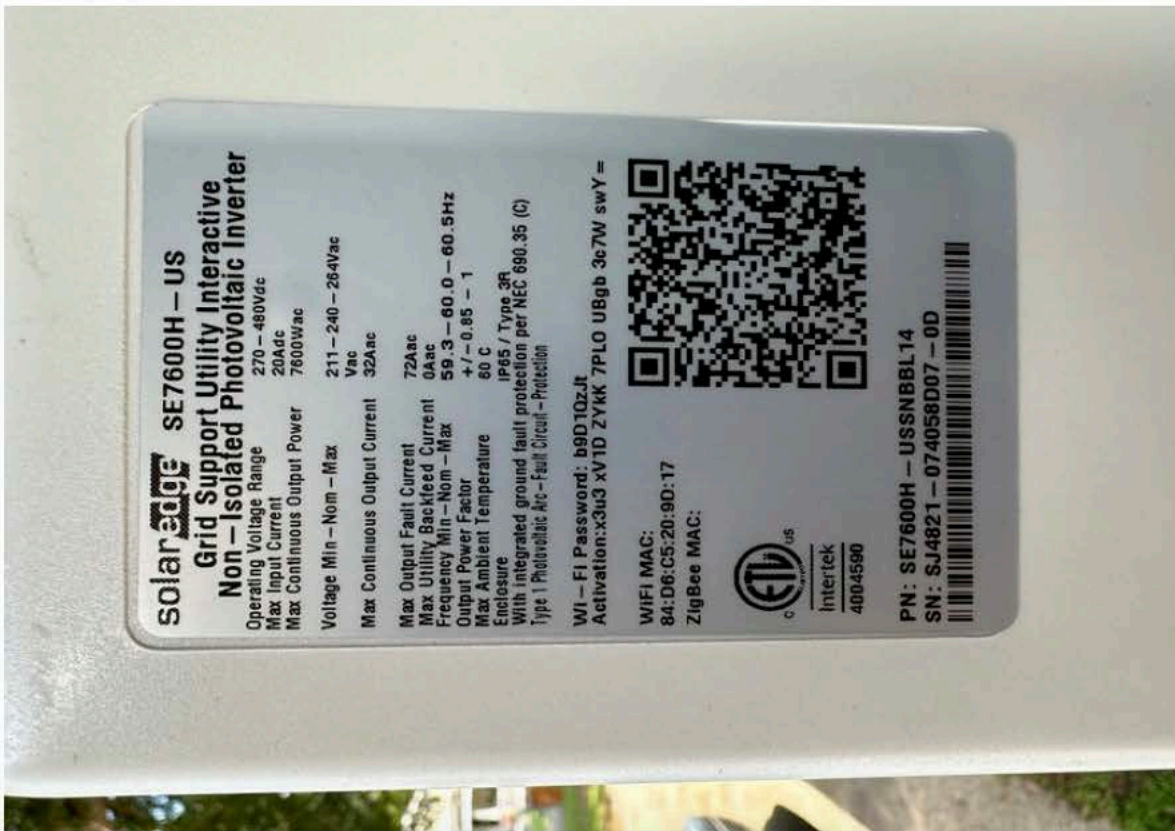
2023-08-16T10:18:35 IMG6441.jpeg



2023-08-16T10:18:40 IMG6442.jpeg



2023-08-16T10:18:46 IMG6443.jpeg



2023-08-16T10:18:47 IMG6444.jpeg



