

NEA STD 1
IAN 05 2021
PRIMER TURNO

...is to be mounted on ...
...is to be bonded ...
...to ensure proper ...
...see wiring diagram for ...
...kit (SMK1) may be ...
...away from the wall

BOX 13

100 100
SIEMENS TYPE E200H1
22,000, 120/240 V~
100/200 A
100/200 A
100/200 A
100/200 A
100/200 A
CIRCUIT BREAKER
ISSUE NO. L1-003
L1-003

50 50
SIEMENS TYPE E200H1
22,000, 120/240 V~
100/200 A
100/200 A
100/200 A
100/200 A
100/200 A
CIRCUIT BREAKER
ISSUE NO. L1-003
L1-003

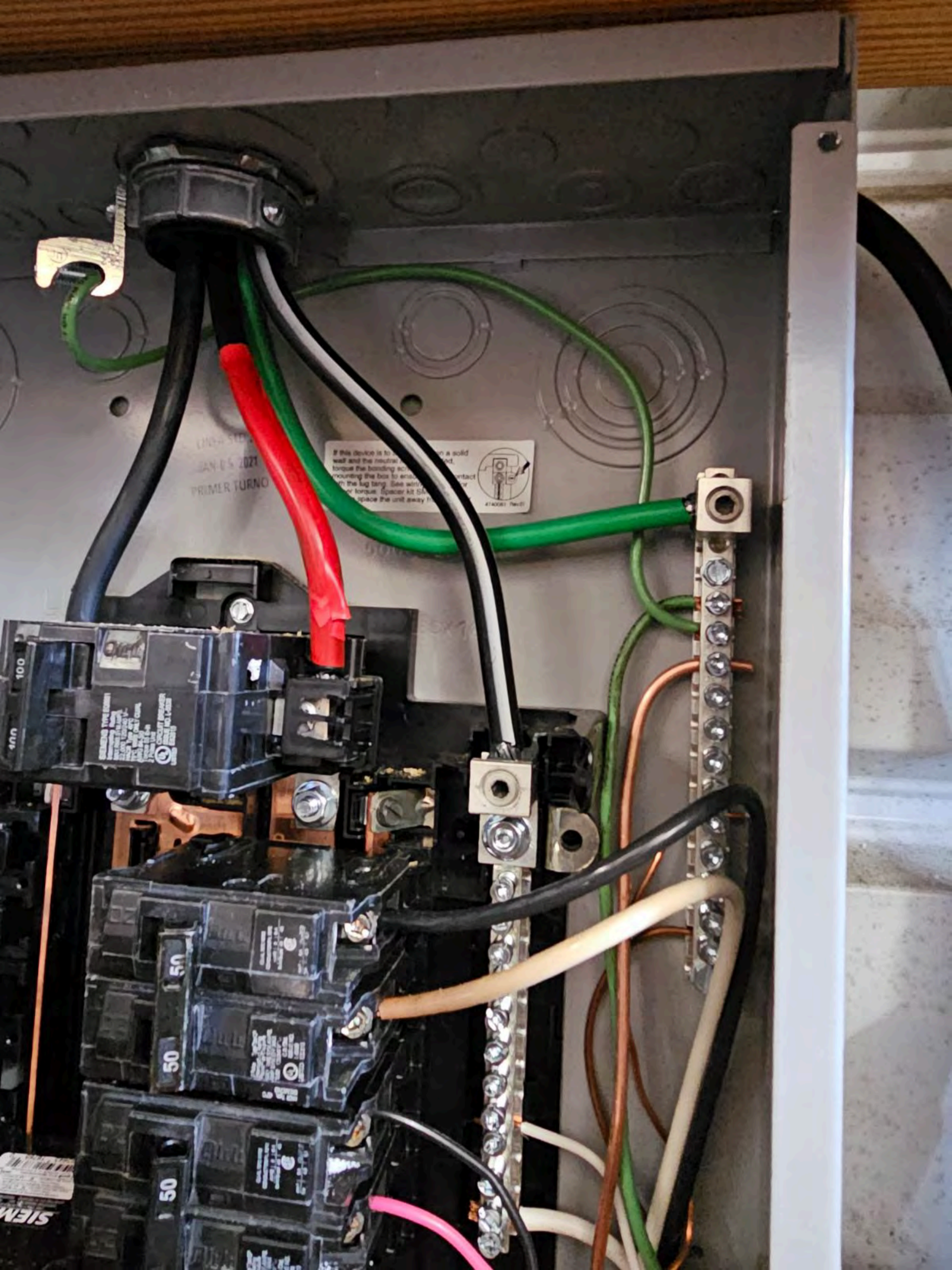
50 50
SIEMENS TYPE E200H1
22,000, 120/240 V~
100/200 A
100/200 A
100/200 A
100/200 A
100/200 A
CIRCUIT BREAKER
ISSUE NO. L1-003
L1-003

35 35
SIEMENS
CIRCUIT BREAKER
ISSUE NO. L1-003
L1-003

UL ENCLOSURE PANELBOARD
Issue No. 0108846

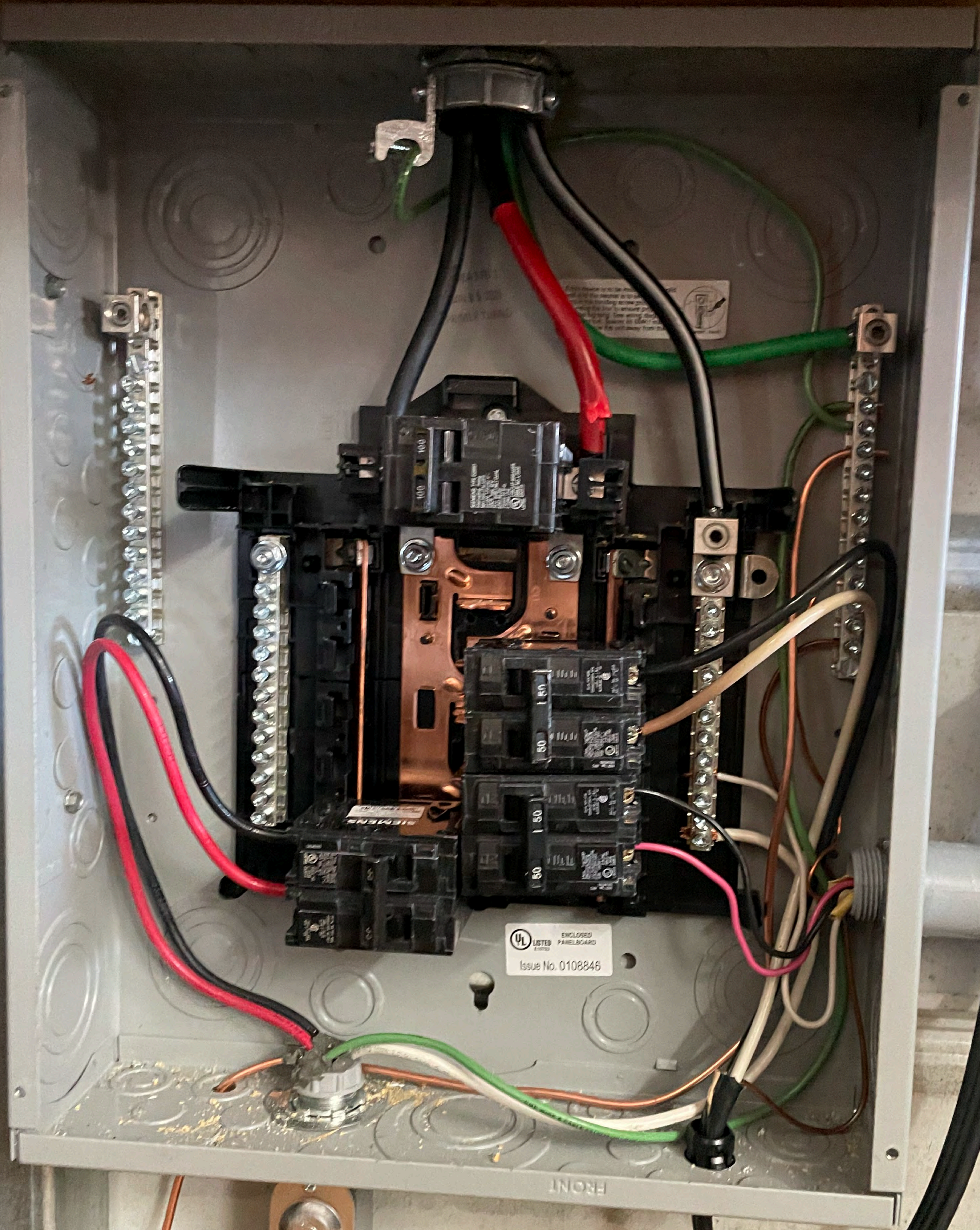












ENCLOSED
PANELBOARD
UL LISTED
Issue No. 0108848

FRONT







RAPID SHUTDOWN SWITCH FOR SOLAR PV SYSTEM

AC DISCONNECT PHOTOVOLTAIC SYSTEM POWER SOURCE

CAUTION