

100 100
SIEMENS TYPE EQ6881
Interrupting Rating
MAXIMUM S.M.A. Amps
22,000 120/240 V~
MAGR Type 40°C
75°C WIRE ONLY CUAL
AWG #4-30
Torque 55 lb-in
2 Poles Unit
CIRCUIT BREAKER
ISSUE NO. L-5538
LISTED E82015

MAIN

1
3
5
7
9
11

2
4
6
8
10
12

50 50
50 50
50 50
50 50
CUAL 75C WIRE
CONDUCTORS 75C
AWG #10-14
SIEMENS
MAGR Type 40°C
75°C WIRE ONLY
AWG #10-14
SIEMENS
CUAL 75C WIRE
CONDUCTORS 75C
AWG #10-14
SIEMENS
MAGR Type 40°C
75°C WIRE ONLY
AWG #10-14
SIEMENS
CUAL 75C WIRE
CONDUCTORS 75C
AWG #10-14
SIEMENS
MAGR Type 40°C
75°C WIRE ONLY
AWG #10-14
SIEMENS

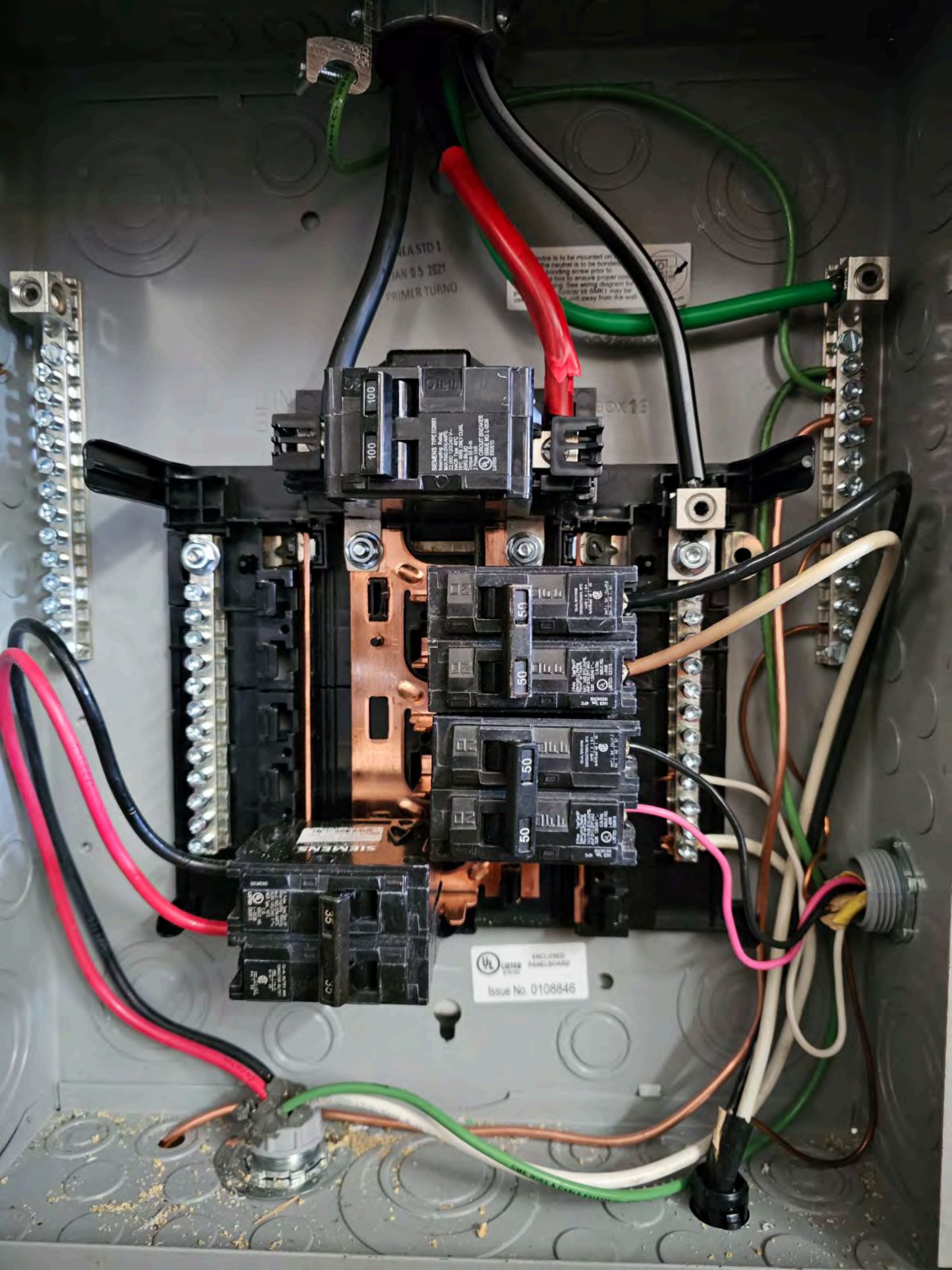
SIEMENS
CUAL 75C WIRE
CONDUCTORS 75C
AWG #10-14
SIEMENS
MAGR Type 40°C
75°C WIRE ONLY
AWG #10-14
SIEMENS
CUAL 75C WIRE
CONDUCTORS 75C
AWG #10-14
SIEMENS
MAGR Type 40°C
75°C WIRE ONLY
AWG #10-14
SIEMENS

P.V
SOLAR
P.V
SOLAR

SOLAR PV BREAKER
BREAKER IS BACKFED
DO NOT RELOCATE
pvlabels.com 03-228

5419500





NEA STD 1
IAN 05 2021
PRIMER TURNO

...is to be mounted on
...neutral is to be bonded
...screw prior to
...to ensure proper
... see wiring diagram for
... kit (SMK1) may be
... away from the wall

100 100
SIEMENS TYPE EDBR1
22,000, 120/240 V~
MAYNUNG
100A 1P
1000 84-30
3 pole 15 in
CIRCUIT BREAKER
ISSUE NO. L-303
L3035

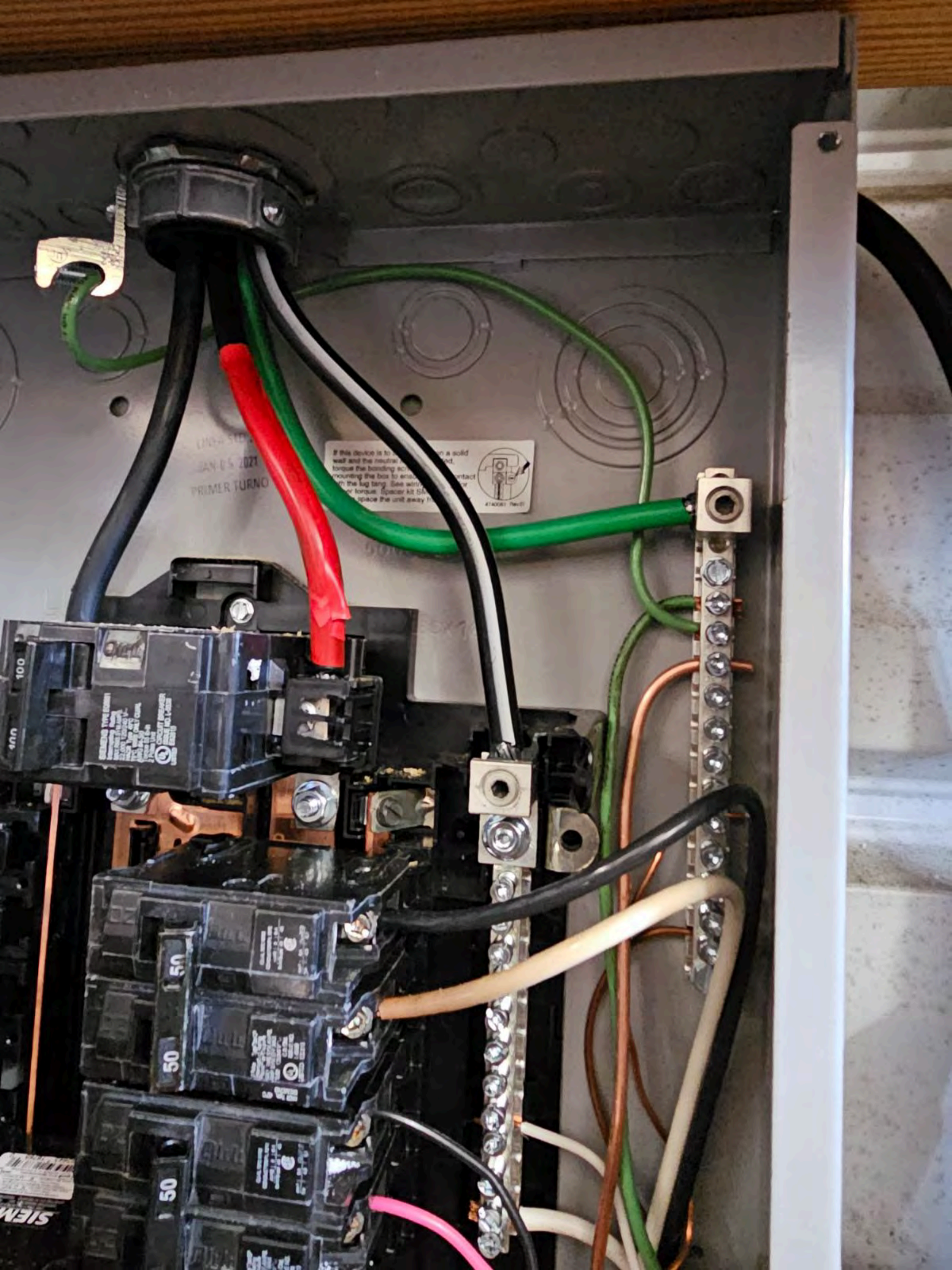
50 50
SIEMENS TYPE EDBR1
22,000, 120/240 V~
MAYNUNG
100A 1P
1000 84-30
3 pole 15 in
CIRCUIT BREAKER
ISSUE NO. L-303
L3035

50 50
SIEMENS TYPE EDBR1
22,000, 120/240 V~
MAYNUNG
100A 1P
1000 84-30
3 pole 15 in
CIRCUIT BREAKER
ISSUE NO. L-303
L3035

35 35
SIEMENS
25000 120/240 V~
MAYNUNG
100A 1P
1000 84-30
3 pole 15 in
CIRCUIT BREAKER
ISSUE NO. L-303
L3035

ENCLOSURE PANELBOARD
Issue No. 0108846





If this device is to be mounted on a solid wall and the neutral is grounded, torque the bonding screw to ensure contact with the lug tang. See wiring for torque. Spacer kit 55... space the unit away from the wall.

100
400V

SIEMENS TYPE EXHIBIT
MAXIMUM AMPERAGE
100A @ 120/240V
100A @ 277/480V
100A @ 480V
100A @ 600V
100A @ 720V
100A @ 840V
100A @ 960V
100A @ 1140V
100A @ 1380V
100A @ 1500V
100A @ 1800V
100A @ 2000V
100A @ 2400V
100A @ 2770V
100A @ 3000V
100A @ 3600V
100A @ 4160V
100A @ 4800V
100A @ 5500V
100A @ 6000V
100A @ 6900V
100A @ 7900V
100A @ 9000V
100A @ 10000V
100A @ 11500V
100A @ 13200V
100A @ 15000V
100A @ 17000V
100A @ 19500V
100A @ 22500V
100A @ 26000V
100A @ 30000V
100A @ 35000V
100A @ 40000V
100A @ 45000V
100A @ 50000V
100A @ 55000V
100A @ 60000V
100A @ 65000V
100A @ 70000V
100A @ 75000V
100A @ 80000V
100A @ 85000V
100A @ 90000V
100A @ 95000V
100A @ 100000V

50

50

SIEMENS











WARNING - ELECTRIC SHOCK HAZARD. THE DC CONDUCTORS OF THIS PHOTOVOLTAIC EQUIPMENT ARE UNGROUNDING AND MAY BE ENERGIZED.

AVERTISSEMENT

RISQUE DE CHOC ELECTRIQUE: QUAND LE CHAMP PHOTOVOLTAIQUE EST EXPOSE A LA LUMIERE, UNE TENSION CC EST FOURNIE A CET EQUIPEMENT. NE PAS TOUCHER, AFIN DE EVITER LES RISQUES DE BRULURES LE COURANT DE REVENDECTE PAR LE CONVERTISSEUR EN CAS DE DERRANGEANCE DANS LE MODULE PV EST TOUJOURS PRESENT.

CAUTION

HOT SURFACES-TO REDUCE THE RISK OF BURNS-DO NOT TOUCH. PHOTOVOLTAIC ARRAY IS EXPOSED TO LIGHT, IT SUPPLIES A DC VOLTAGE TO EQUIPMENT. COVER PV MODULE WITH OPAQUE MATERIAL BEFORE CONNECTING OR DISCONNECTING THIS OPTIMIZER. DURING FAULT, ZERO CURRENT IS SOURCED INTO DC ARRAY BY CONVERTER.

SolarEdge Technologies Ltd.
Power Optimizer
SolarEdge Technologies GmbH/
Werner-Eckert-Strabe 6/81829
Munich/Germany

Do Not Remove
Remove
175F22A8-40

SolarEdge Technologies Ltd
Werner-Eckert-Strabe 6/81829 Munich/Germany

FC

Do not disconnect under load

Remove
Remove
175F22A8-40

SolarEdge Technologies Ltd
Werner-Eckert-Strabe 6/81829 Munich/Germany

Remove
Remove
175F22A8-40

SolarEdge Technologies Ltd
Werner-Eckert-Strabe 6/81829 Munich/Germany



175E18C-08
Do Not Remove
SolarEdge Technologies Ltd.
Werner-Everett-Strasse 681829
Munich, Germany



SolarEdge Technologies Ltd.
Power Optimizer
SolarEdge Technologies GmbH
Werner-Everett-Strasse 681829
Munich, Germany



CAUTION
HOT SURFACES TO REDUCE THE RISK OF BURNS, DO NOT TOUCH PHOTOVOLTAIC ARRAYS. WHEN THE PHOTOVOLTAIC ARRAYS ARE EXPOSED TO LIGHT, IT SUPPLIES A DC VOLTAGE TO EQUIPMENT. COVER PV MODULE WITH OPAQUE MATERIAL BEFORE CONNECTING OR DISCONNECTING THIS OPTIMIZER. DURING FAULT, ZERO CURRENT IS SOURCED INTO DC ARRAY BY CONVERTER.

WARNING ELECTRIC SHOCK HAZARD. THE DC CONDUCTORS OF THIS PHOTOVOLTAIC SYSTEM ARE UNGROUNDING AND MAY BE ENERGIZED.

AVERTISSEMENT
RISQUE DE CHOC ELECTRIQUE. QUAND LE CHAMP PHOTOVOLTAIQUE EST EXPOSE A LA LUMIERE, UNE TENSION CC EST FOURNIE A L'EQUIPEMENT. SURFACES COUVRIES DE BRILLURES LE COUVRANT DE MATERIE OPAQUE AVANT LE RASSEMBLEMENT EN CAS DE DEFAILLANCE DANS LE MODULE PV EST TOUJOURS RUEL.



PHOTOVOLTAIC POWER SOURCE

Do Not Remove
175F22A8-40
SolarEdge Technologies Ltd.
Werner-tickett-Strasse 6/81829 Munich/Germany



SolarEdge Technologies Ltd
Power Optimizer
SolarEdge Technologies GmbH/
Werner-tickett-Strasse 6/81829
Munich/Germany



CAUTION
HOT SURFACES TO REDUCE THE RISK OF BURNS DO NOT TOUCH. PHOTOVOLTAIC ARRAY IS EXPOSED TO LIGHT. IT SUPPLIES A DC VOLTAGE TO EQUIPMENT. COVER PV MODULE WITH OPAQUE MATERIAL BEFORE CONNECTING OR DISCONNECTING THIS OPTIMIZER. DURING FAULT, ZERO CURRENT IS SOURCED INTO DC ARRAY BY CONVERTER.

WARNING
ELECTRIC SHOCK HAZARD. THE DC CONDUCTORS OF THIS PHOTOVOLTAIC ARRAY ARE UNGROUNDING AND MAY BE ENERGIZED.

AVERTISSEMENT
RISQUE DE CHOC ELECTRIQUE: QUAND LE CHAMP PHOTOVOLTAIC EST EXPOSE A LA LUMIERE, UNE TENSION CC EST FOURNIE A CET EQUIPEMENT. FAITES CHAUDS. NE PAS TOUCHER. AFIN DE TOUVER LES RISQUES DE BRULURES LE COURANT INJECTE PAR LE CONVERTISSEUR EN TOUVER L'ISOLANCE DANS LE MODULE PV EST





PHOTOVOLTAIC POWER SOURCE

DANGER
ACROSS-ARM
F2
QR CODE



All Keep Sheriff FUNN





Always Keep Sheriff



KEEP WAYNE TS

Keep Sheriff ENNIS

AMAZON
BATTERIES

















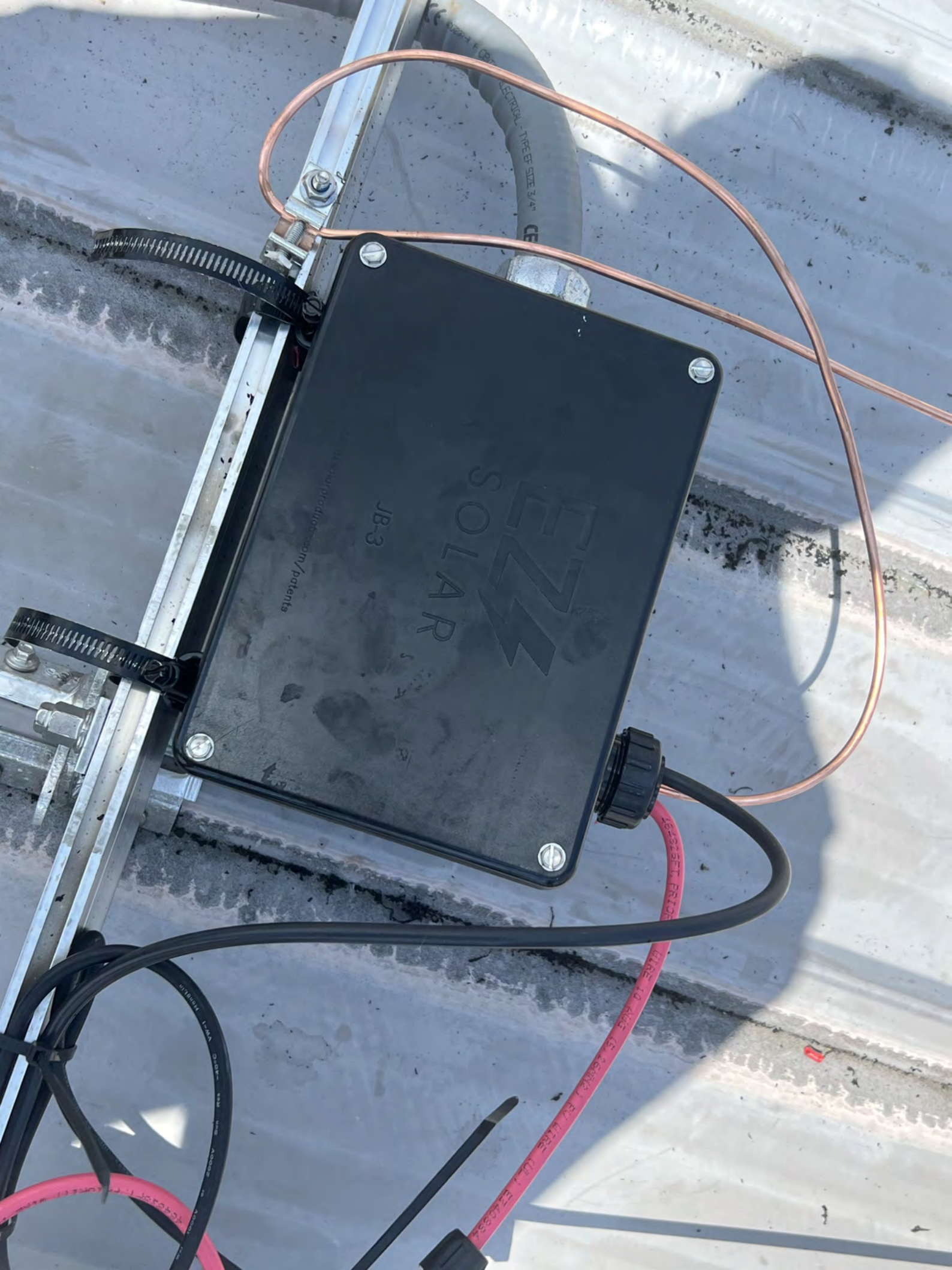












EZZ
SOLAR

JB-3

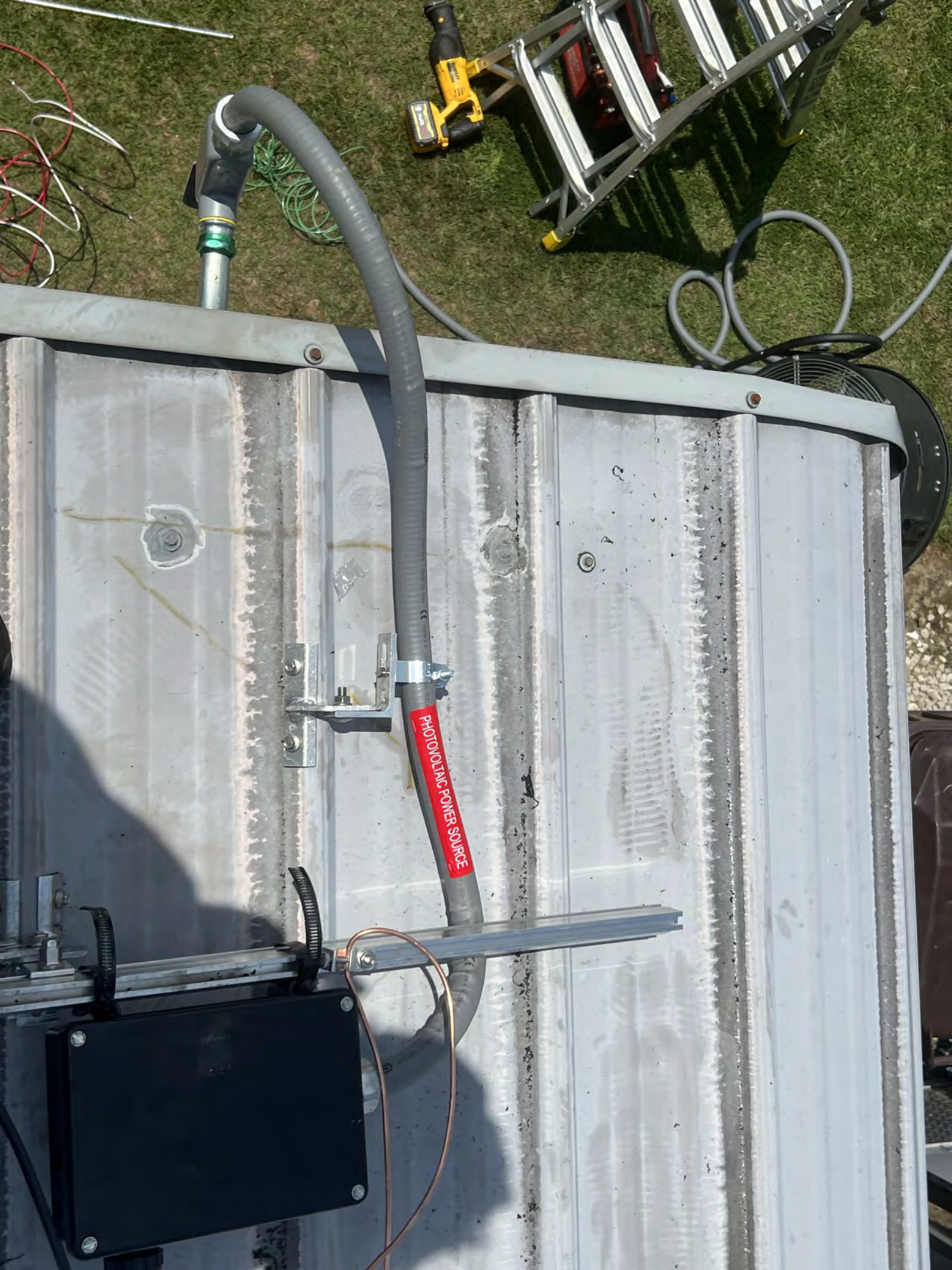
all rights reserved / patents

EZZ SOLAR

WIRE 10 AWG (5.0mm²) RJ WIRE (UL) E246934

EZZ SOLAR

SECRET - TYPE B SIZE 3/4" CE



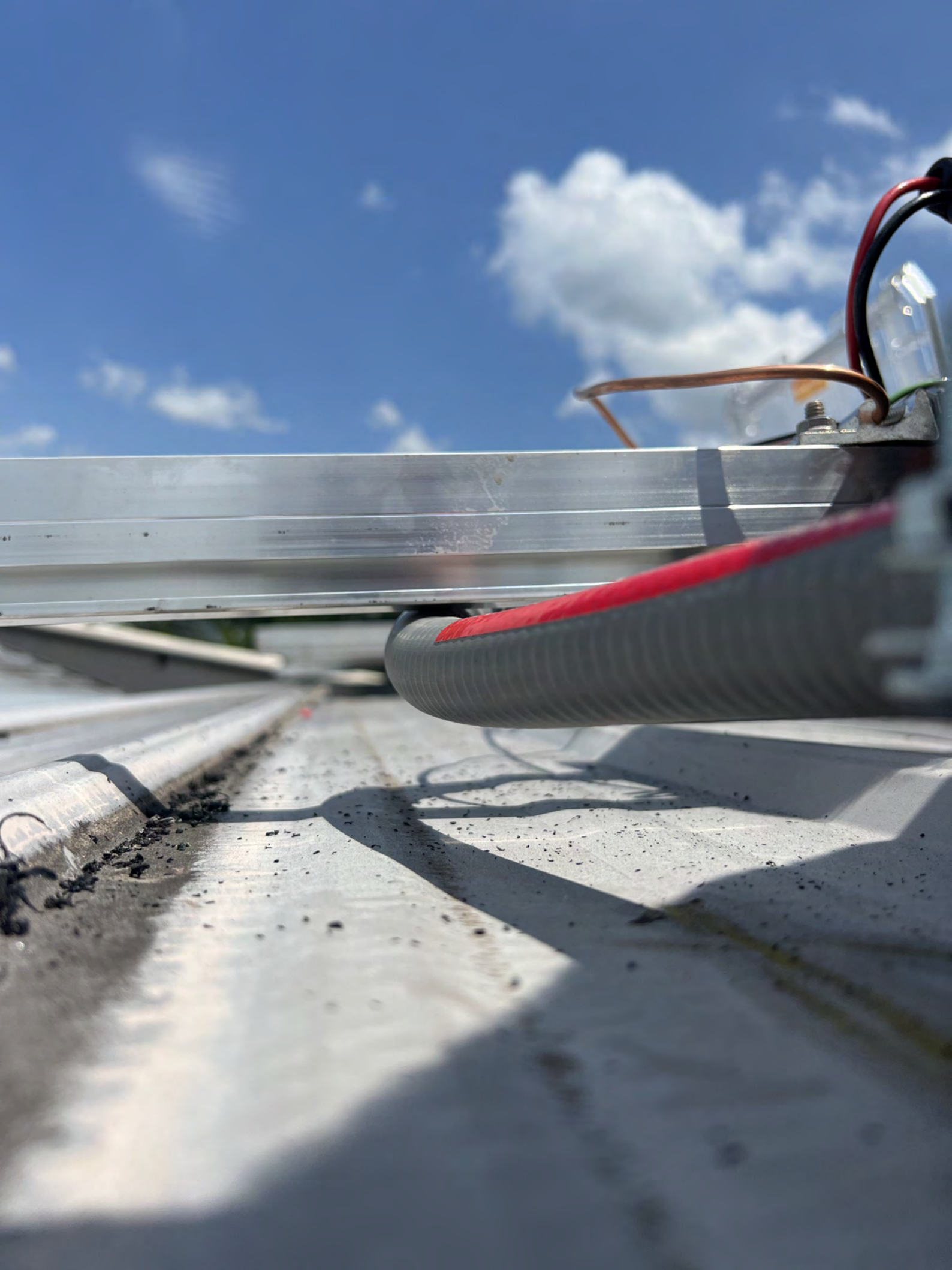
PHOTOVOLTAIC POWER SOURCE



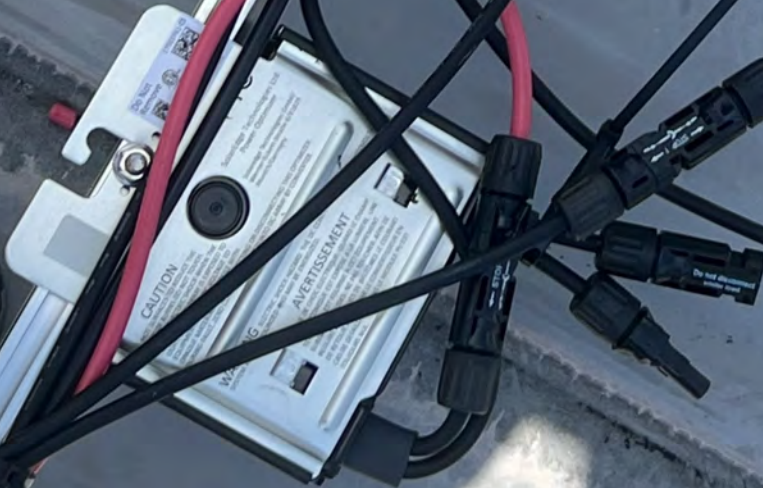


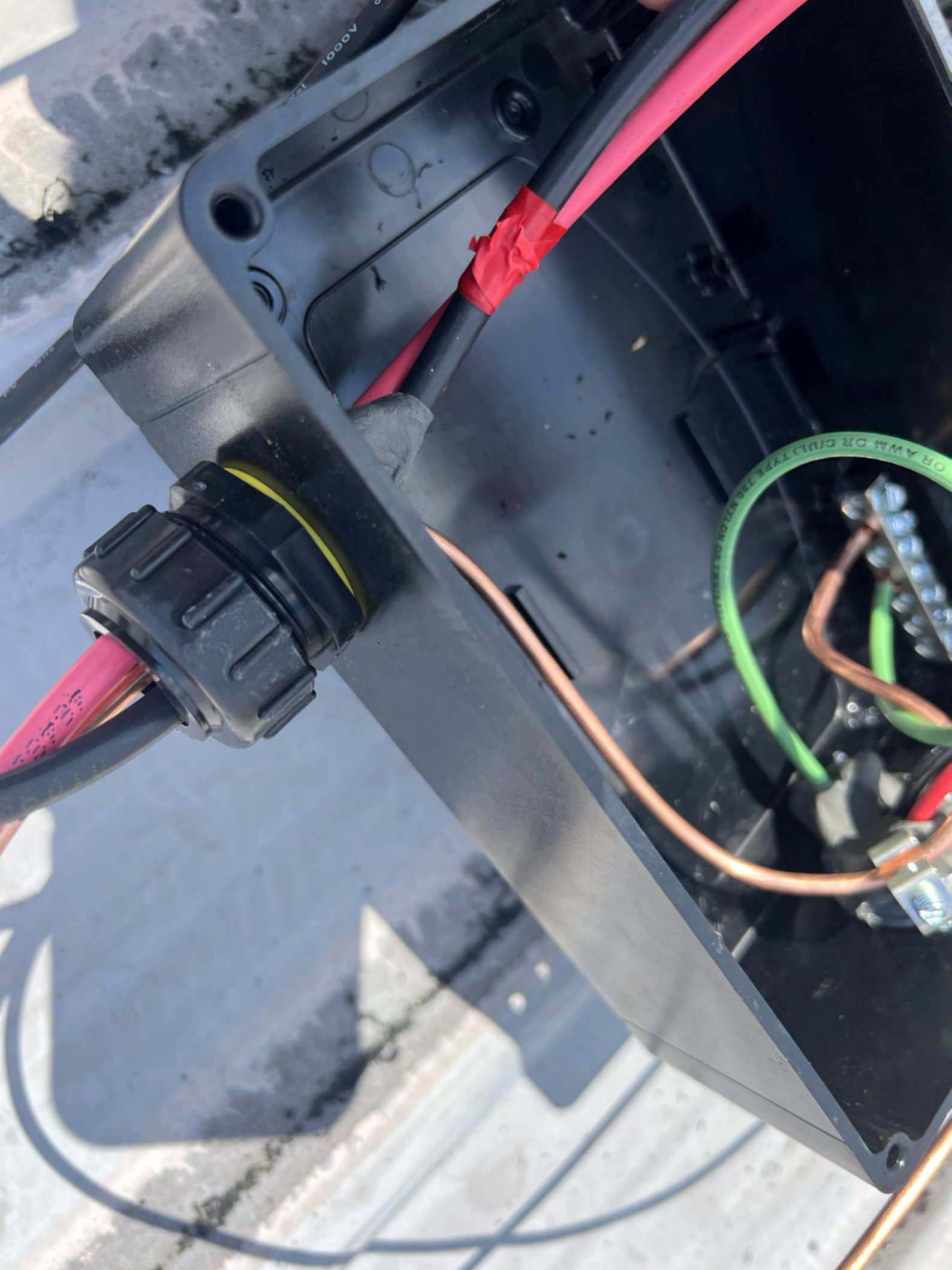
PHOTOVOLTAIC POWER SOURCE

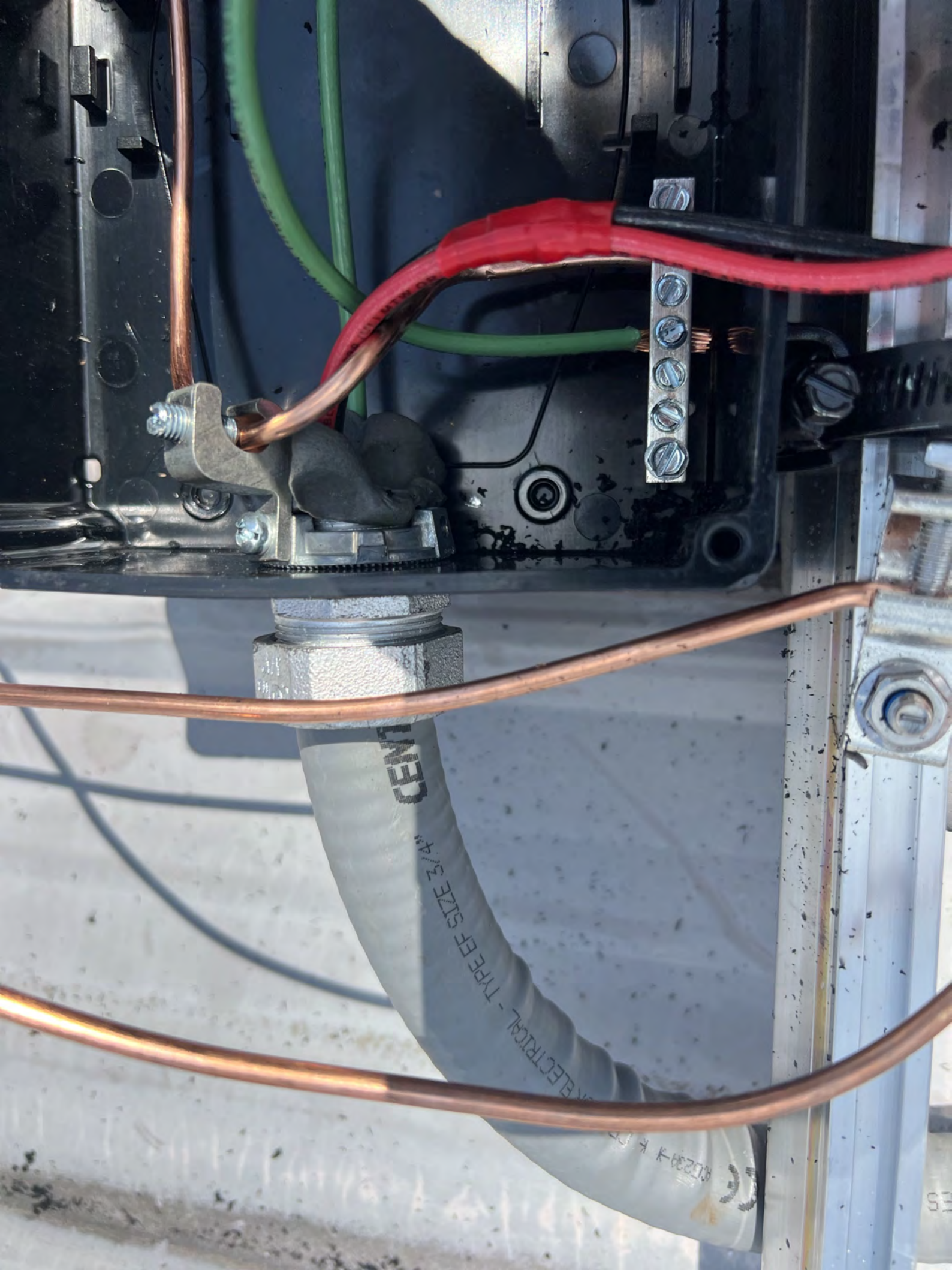
ELECTRICAL
MADE IN USA
CE
PC6231 T CEN



PHOTOVOLTAIC POWER SOURCE







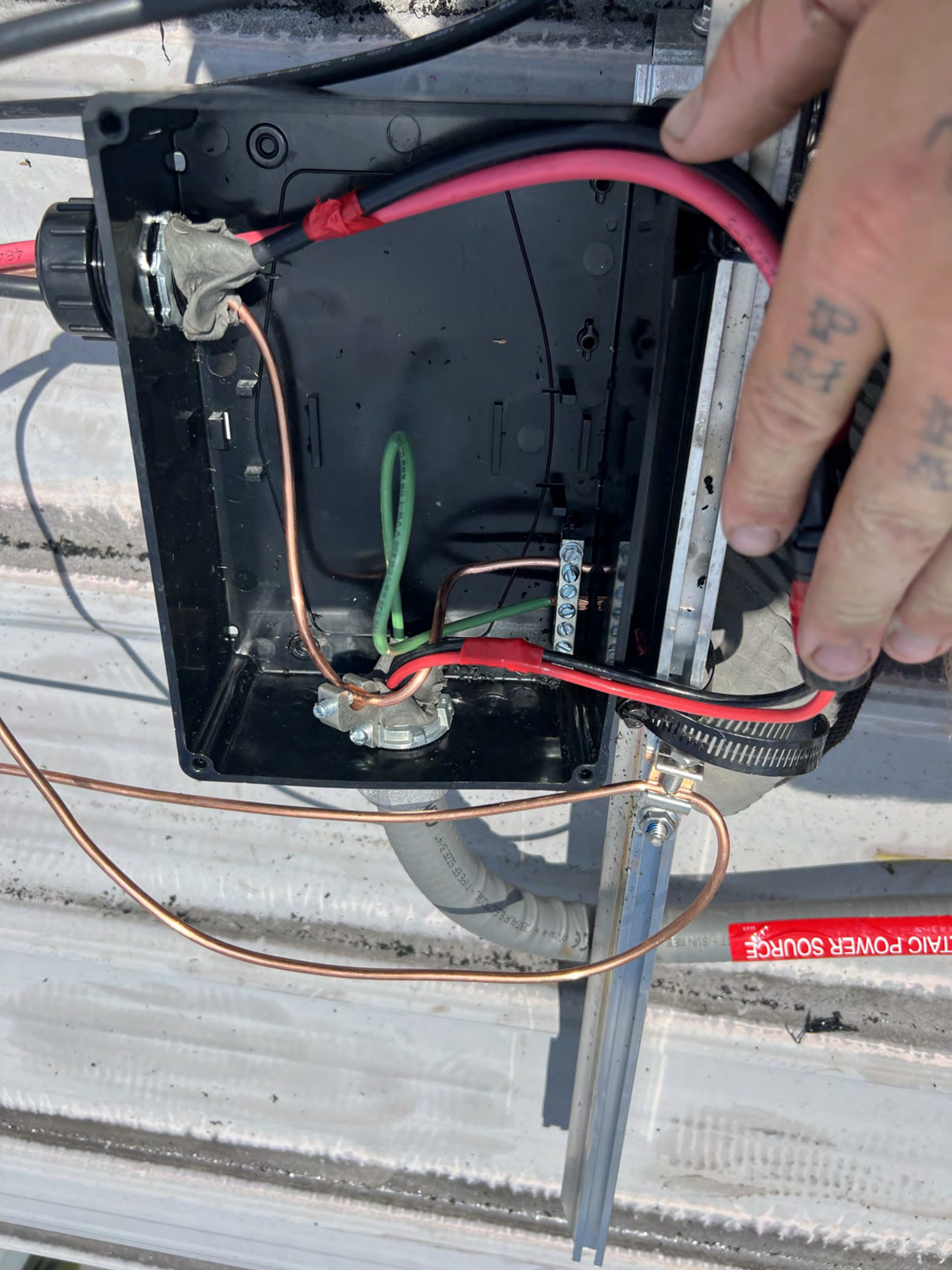
CENTRAL

ELECTRICAL - TYPE EF SIZE 3/4"

102234-K



SS



MISSION SOLAR
ENERGY

Serial No. **M230308-B0465**

Model Number **MSE3955XR**

Rated Maximum Power	[W]	395 (-0/+3%)
Open - Circuit Voltage	[V]	46.2
Voltage at Pmax	[V]	37.0
Short - Circuit Current	[A]	11.24
Current at Pmax	[A]	10.88
Max. System Voltage	[V]	1000

Max. Series overcurrent protective device (where required) fuse rating: **20** [A]

Standard test condition: **AM=1.5 E=1000W/m² Tc=25°C**

For field connections, use Cu only, 12AWG (US, CANADA), 4mm² (EU, ASIA) wires insulated for a minimum of 90°C, rated for wet conditions and resistant to ultra violet radiation (where exposed). See installation manual for PV connector details and compatibility. Avertissement Risque de choc électrique. Ce module produit des tensions élevées dans la lumière du soleil. Risque électrique peut choquer, brûler ou de provoquer la mort. Ne pas toucher la borne.

Fire Rating: Type 1
Class of Equipment: Class II
Design Load: Minimum 3600 Pa front and minimum 1600 Pa back load

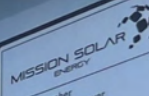
Warning
PV modules generate voltage even with very weak light. Do not open the junction box. Les modules PV produisent tension même en basse lumière. Ne pas ouvrir la boîte de jonction.

Address:
8303 S. New Braunfels Ave.
San Antonio, TX 78235
ASSEMBLED IN THE USA









Serial No. **M230308-B0465**

Model Number	MSE396SXBR
Rated Maximum Power	396 (-0/+3%)
Open-Circuit Voltage	46.2
Voltage at Pmax	37.0
Short-Circuit Current	11.24
Current at Pmax	10.68
Max. System Voltage	1000



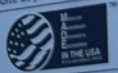
Max. Series overcurrent protective device (where required) fuse rating standard test condition	[A]	20
--	-----	-----------



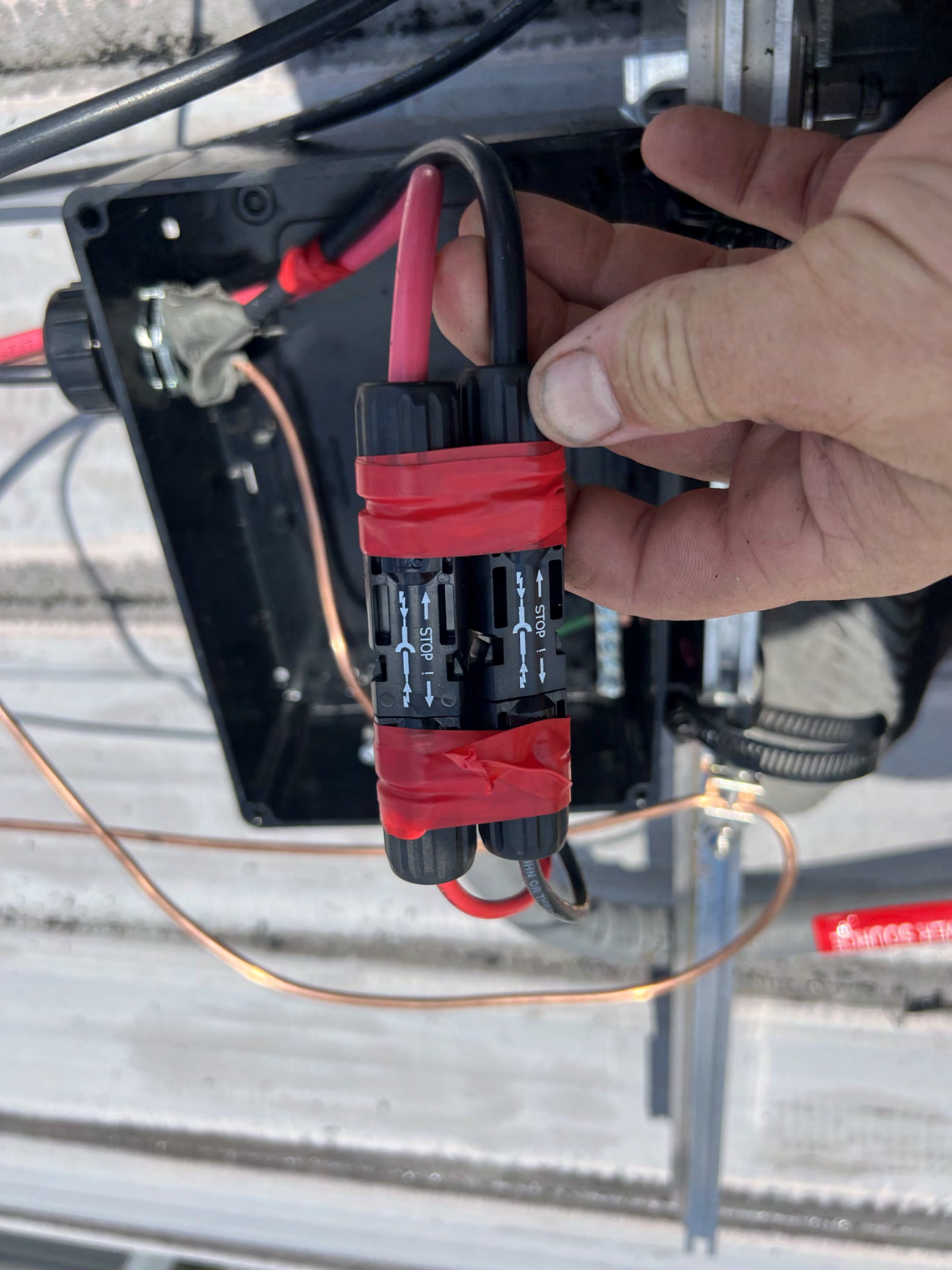
For field connections, use Cu only. 12AWG (US, CANADA); 4mm² (EU, Asia) wires insulated for a minimum of 90°C, rated for wet conditions and resistant to ultraviolet radiation (where exposed). See installation manual for PV connector details and compatibility. Avertissement: Risque de choc électrique. Ce module produit des tensions élevées dans la lumière du soleil. Risque électrique peut choquer, brûler ou de provoquer la mort. Ne pas toucher la borne.

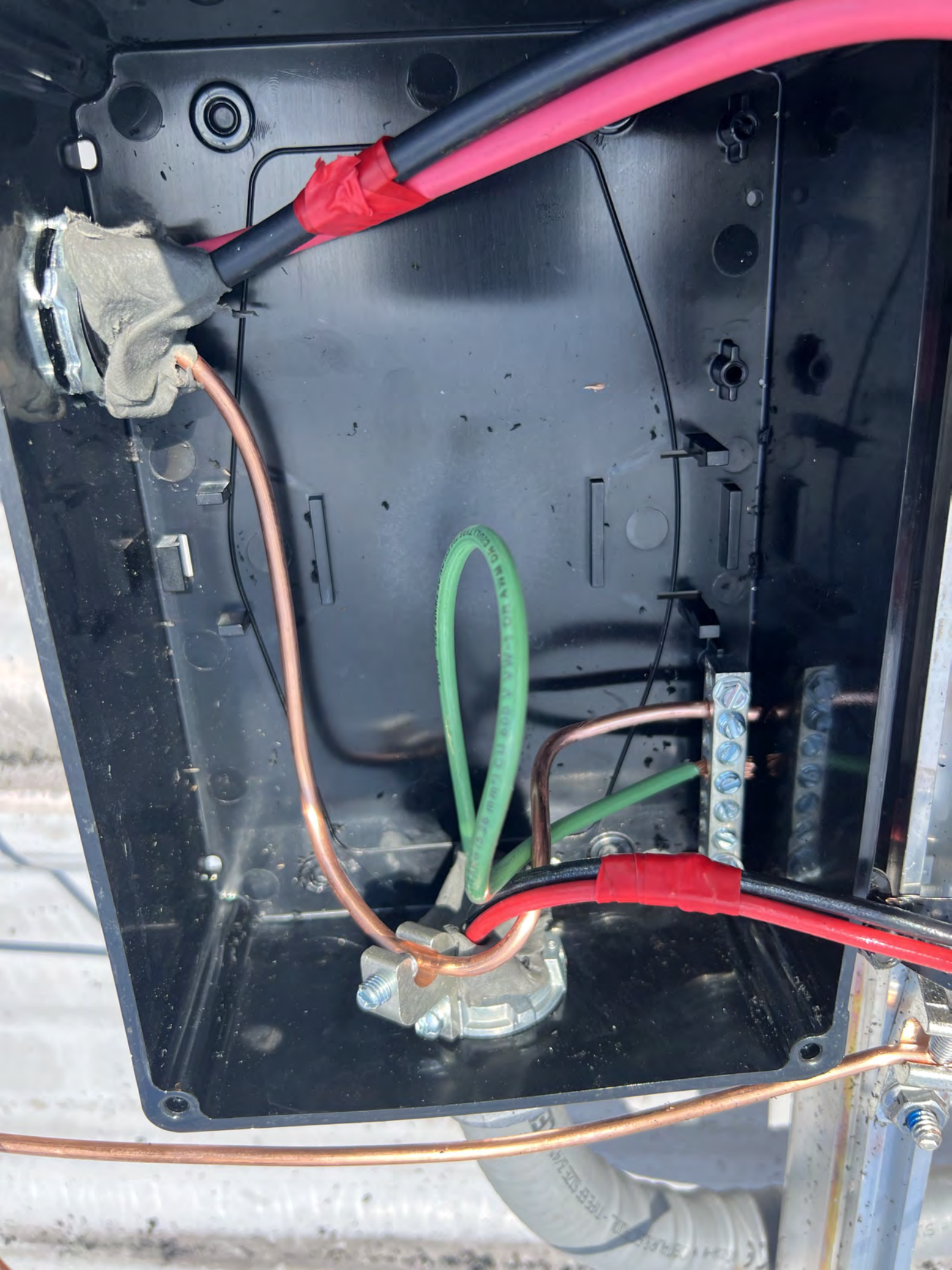
Fire Rating - Type 1
 Class of Equipment: Class II
 Design Load: Minimum 3600 Pa front and minimum 1600 Pa back load

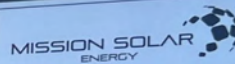
Warning
 PV modules generate voltage even with very weak light. Do not open the junction box. Les modules PV produisent tension même en basse lumière.
 Ne pas ouvrir la boîte de jonction.



Address:
 8303 S. New Braunfels Ave.
 San Antonio, TX 78235
ASSEMBLED IN THE USA







Serial No. **M230308-B0465**



MSE395SX9R

Model Number	[W]	395 (-0/+3%)
Rated Maximum Power	[V]	45.2
Open - Circuit Voltage	[V]	37.0
Voltage at Pmax	[A]	11.24
Short - Circuit Current	[A]	10.68
Current at Pmax	[V]	1000
Max. System Voltage		
Max. Series overcurrent protective device (where required) fuse rating	[A]	20
Standard test condition		AM=1.5 E=1000W/m² Tc=25°C



For field connections, use Cu only, 12AWF (US, CANADA), 4mm2 (EU, Asia) wires insulated for a minimum of 90°C, rated for wet conditions and resistant to ultra violet radiation (where exposed). See installation manual for PV connector details and compatibility. Avertissement Risque de choc électrique. Ce module produit des tensions élevées dans la lumière du soleil. Risque électrique peut choquer, brûler ou de provoquer la mort. Ne pas toucher la borne.

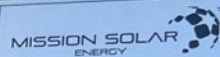


Fire Rating : Type 1
 Class of Equipment: Class II
 Design Load: Minimum 3600 Pa front and minimum 1600 Pa back load

Warning
 PV modules generate voltage even with very weak light. Do not open the junction box. Les modules PV produisent tension même en basse lumière.
 Ne pas ouvrir la boîte de jonction.



Address:
 8303 S. New Braunfels Ave.
 San Antonio, TX 78235
ASSEMBLED IN THE USA



Serial No. **M230308-B0465**



Model Number
 Rated Maximum Power
 Open – Circuit Voltage
 Voltage at Pmax
 Short – Circuit Current
 Current at Pmax
 Max. System Voltage
 Max. Series overcurrent protective device (where required) fuse rating
 Standard test condition

MSE395SX9R
395 (-0/+3%)
45.2
37.0
11.24
10.68
1000



[A] 20
 AM=1.5 E=1000W/m² Tc=25°C

For field connections, use Cu only, 12AWG (US, CANADA), 4mm² (EU, Asia) wires insulated for a minimum of 90°C, rated for wet conditions and resistant to ultra violet radiation (where exposed). See installation manual for PV connector details and compatibility. Avertissement Risque de choc électrique. Ce module produit des tensions élevées dans la lumière du soleil. Risque électrique peut choquer, brûler ou de provoquer la mort. Ne pas toucher la borne.



Fire Rating : Type 1
 Class of Equipment: Class II
 Design Load: Minimum 3600 Pa front and minimum 1600 Pa back load

Warning
 PV modules generate voltage even with very weak light. Do not open the junction box. Les modules PV produisent tension même en basse lumière. Ne pas ouvrir la boîte de jonction.



Address:
 8303 S. New Braunfels Ave.
 San Antonio, TX 78235

ASSEMBLED IN THE USA



ENCLOSURE
PANELBOARD

Issue No. 0108846





46



FRONT

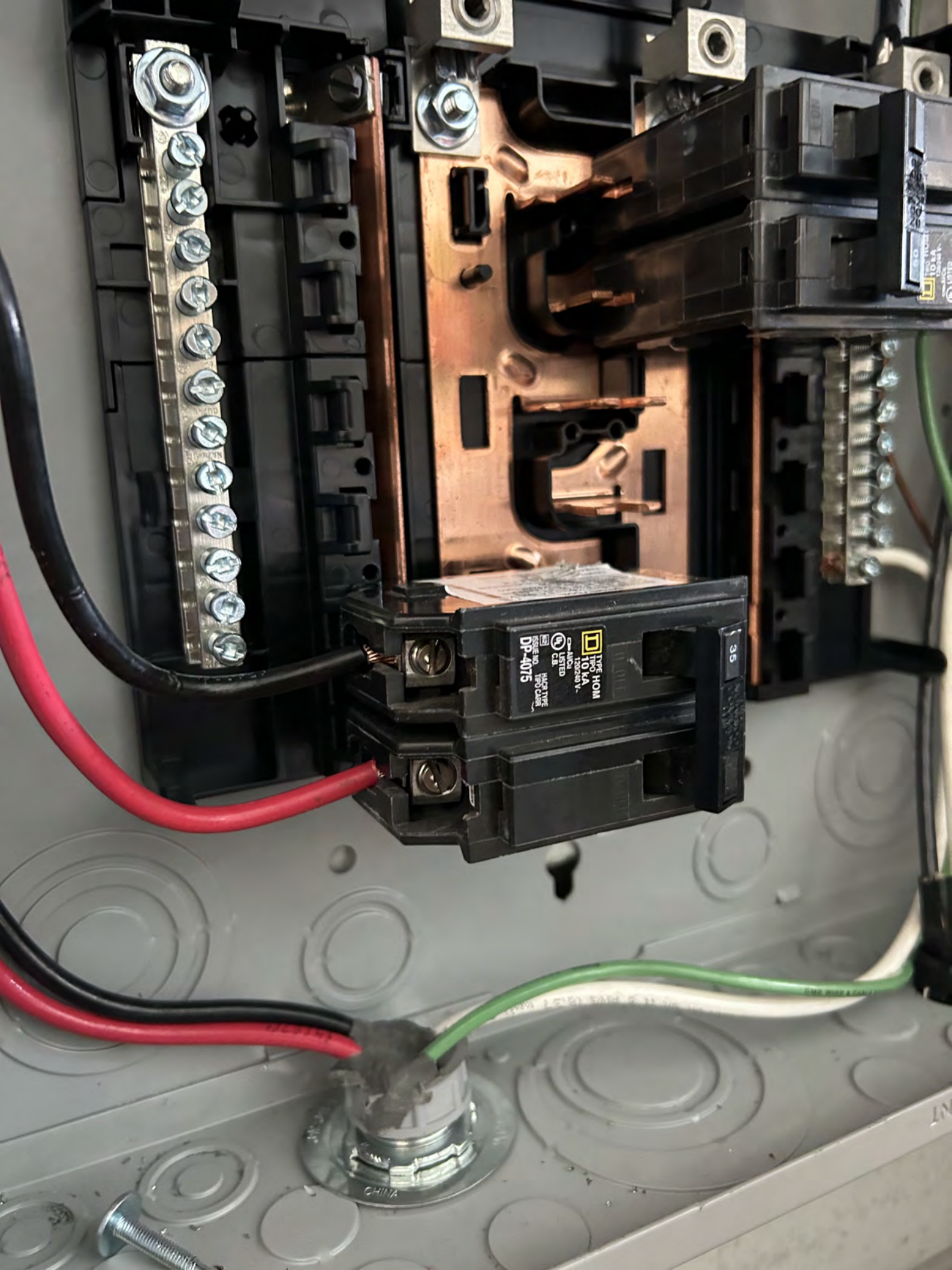
LINEA STD 1
JAN 05 2021
PRIMER TURNO

If this device is mounted on a solid wall and the mounting screws are to be bonded to the wall, the mounting screws must be bonded to the wall with the lug proper for the proper bonding method used to secure the device.

35
UL LISTED
ENCLOSED PANELBOARD
E10703
Issue No. 0108846

UL LISTED
ENCLOSED PANELBOARD
E10703
Issue No. 0108846

FRONT



SIEMENS

Indoor Load Center

Model No. QJ1200

120/240V, 1-Phase, 3-Wire

120/240V, 1-Phase, 3-Wire

120/240V, 1-Phase, 3-Wire

120/240V, 1-Phase, 3-Wire

120/240V, 1-Phase, 3-Wire

120/240V, 1-Phase, 3-Wire

120/240V, 1-Phase, 3-Wire

120/240V, 1-Phase, 3-Wire

120/240V, 1-Phase, 3-Wire

120/240V, 1-Phase, 3-Wire

120/240V, 1-Phase, 3-Wire

120/240V, 1-Phase, 3-Wire

120/240V, 1-Phase, 3-Wire

120/240V, 1-Phase, 3-Wire

120/240V, 1-Phase, 3-Wire

120/240V, 1-Phase, 3-Wire

120/240V, 1-Phase, 3-Wire

120/240V, 1-Phase, 3-Wire

120/240V, 1-Phase, 3-Wire

120/240V, 1-Phase, 3-Wire

120/240V, 1-Phase, 3-Wire

120/240V, 1-Phase, 3-Wire

120/240V, 1-Phase, 3-Wire

120/240V, 1-Phase, 3-Wire

120/240V, 1-Phase, 3-Wire

120/240V, 1-Phase, 3-Wire

120/240V, 1-Phase, 3-Wire

120/240V, 1-Phase, 3-Wire

120/240V, 1-Phase, 3-Wire

120/240V, 1-Phase, 3-Wire

120/240V, 1-Phase, 3-Wire

120/240V, 1-Phase, 3-Wire

120/240V, 1-Phase, 3-Wire

120/240V, 1-Phase, 3-Wire

120/240V, 1-Phase, 3-Wire

120/240V, 1-Phase, 3-Wire

120/240V, 1-Phase, 3-Wire

120/240V, 1-Phase, 3-Wire

120/240V, 1-Phase, 3-Wire

120/240V, 1-Phase, 3-Wire

120/240V, 1-Phase, 3-Wire

120/240V, 1-Phase, 3-Wire

120/240V, 1-Phase, 3-Wire

120/240V, 1-Phase, 3-Wire

120/240V, 1-Phase, 3-Wire

120/240V, 1-Phase, 3-Wire

120/240V, 1-Phase, 3-Wire

120/240V, 1-Phase, 3-Wire

120/240V, 1-Phase, 3-Wire

120/240V, 1-Phase, 3-Wire

120/240V, 1-Phase, 3-Wire

120/240V, 1-Phase, 3-Wire

120/240V, 1-Phase, 3-Wire

120/240V, 1-Phase, 3-Wire

120/240V, 1-Phase, 3-Wire

120/240V, 1-Phase, 3-Wire

120/240V, 1-Phase, 3-Wire

120/240V, 1-Phase, 3-Wire

120/240V, 1-Phase, 3-Wire

120/240V, 1-Phase, 3-Wire

120/240V, 1-Phase, 3-Wire

120/240V, 1-Phase, 3-Wire

120/240V, 1-Phase, 3-Wire

120/240V, 1-Phase, 3-Wire

120/240V, 1-Phase, 3-Wire

120/240V, 1-Phase, 3-Wire

120/240V, 1-Phase, 3-Wire

120/240V, 1-Phase, 3-Wire

120/240V, 1-Phase, 3-Wire

120/240V, 1-Phase, 3-Wire

120/240V, 1-Phase, 3-Wire

120/240V, 1-Phase, 3-Wire

120/240V, 1-Phase, 3-Wire

120/240V, 1-Phase, 3-Wire

120/240V, 1-Phase, 3-Wire

120/240V, 1-Phase, 3-Wire

120/240V, 1-Phase, 3-Wire

120/240V, 1-Phase, 3-Wire

120/240V, 1-Phase, 3-Wire

120/240V, 1-Phase, 3-Wire

120/240V, 1-Phase, 3-Wire

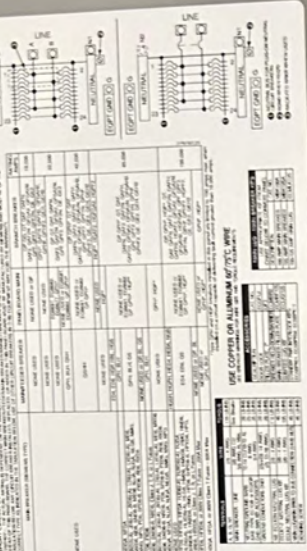
120/240V, 1-Phase, 3-Wire

120/240V, 1-Phase, 3-Wire

120/240V, 1-Phase, 3-Wire

120/240V, 1-Phase, 3-Wire

120/240V, 1-Phase, 3-Wire



P.V
Solar

P.V
Solar

SOLAR PV BREAKER
BREAKER IS BACKFED
DO NOT RELOCATE

CAUTION
SOLAR POINT OF CONNECTION

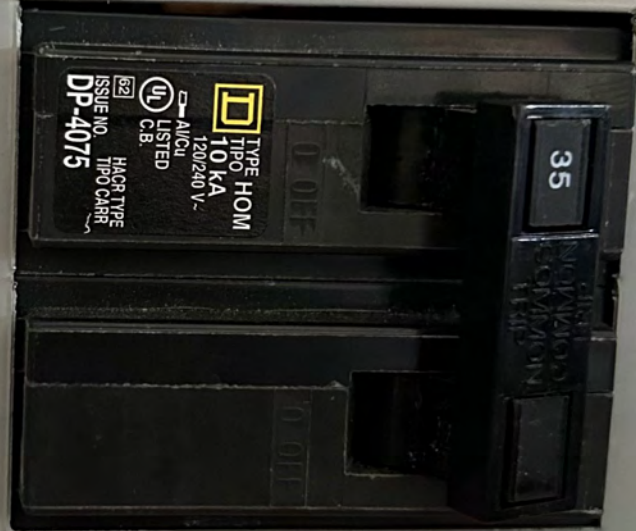
MAIN

5419500



P.V
SOLAR

P.V
SOLAR



SOLAR PV BREAKER
BREAKER IS BACKFED
DO NOT RELOCATE
pvlabels.com 03-225

**CAUTION: SOLAR ELECTRIC
SYSTEM CONNECTED**

⚠ WARNING
DUAL POWER SUPPLY
SOURCES: UTILITY GRID
AND PV SOLAR
ELECTRIC SYSTEM



⚠ CAUTION ⚠
SOLAR POINT OF CONNECTION

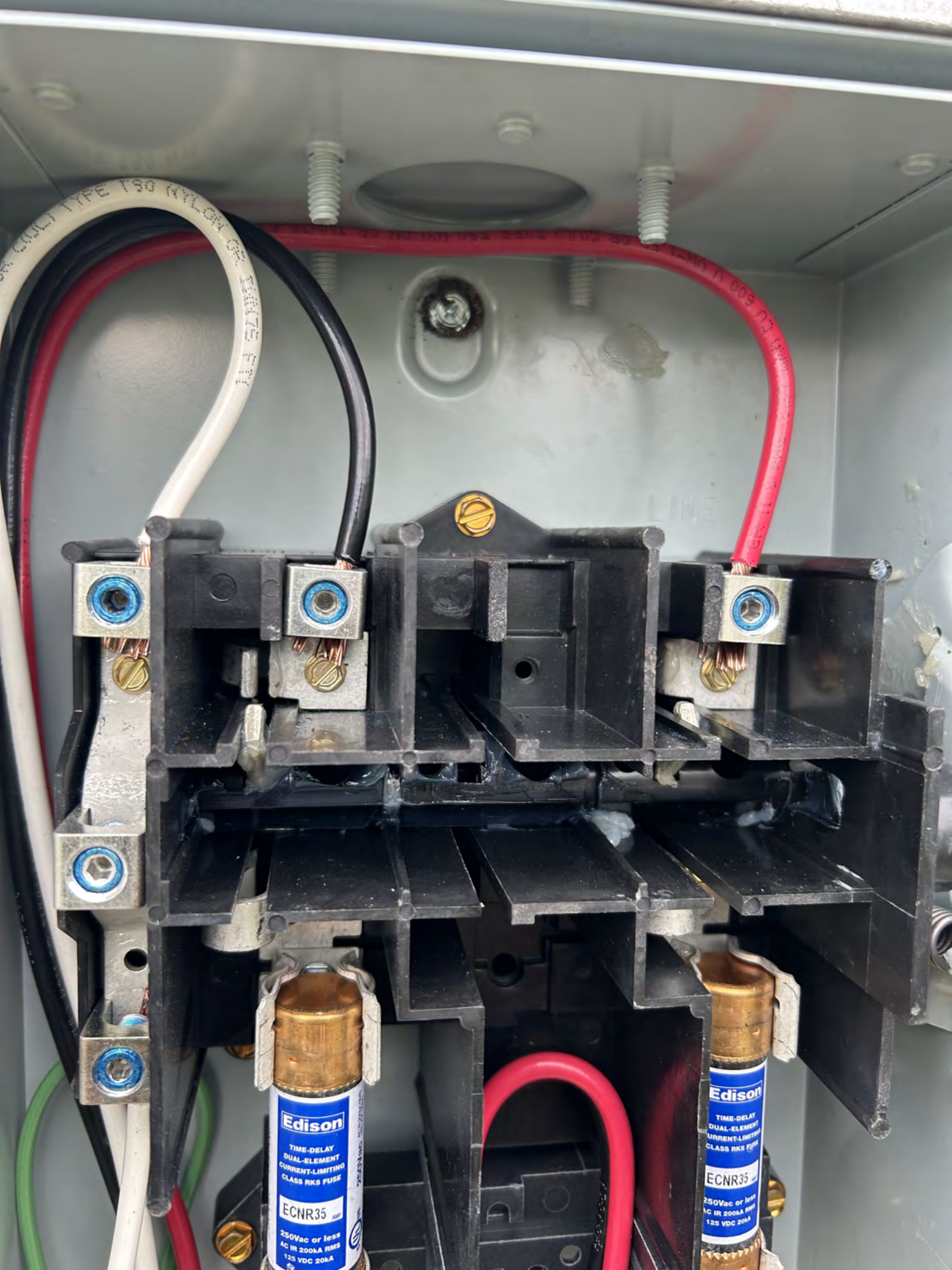




Edison
TIME-DELAY
DUAL-ELEMENT
CURRENT-LIMITING
CLASS RK5 FUSE
ECNR35
AMP
250Vac or less
AC IR 200kA RMS
125 VDC 20kA
UL
250Vac or less
AC IR 200kA RMS
125 VDC 20kA

Edison
TIME-DELAY
DUAL-ELEMENT
CURRENT-LIMITING
CLASS RK5 FUSE
ECNR35
AMP
250Vac or less
AC IR 200kA RMS
125 VDC 20kA
UL
250Vac or less
AC IR 200kA RMS
125 VDC 20kA

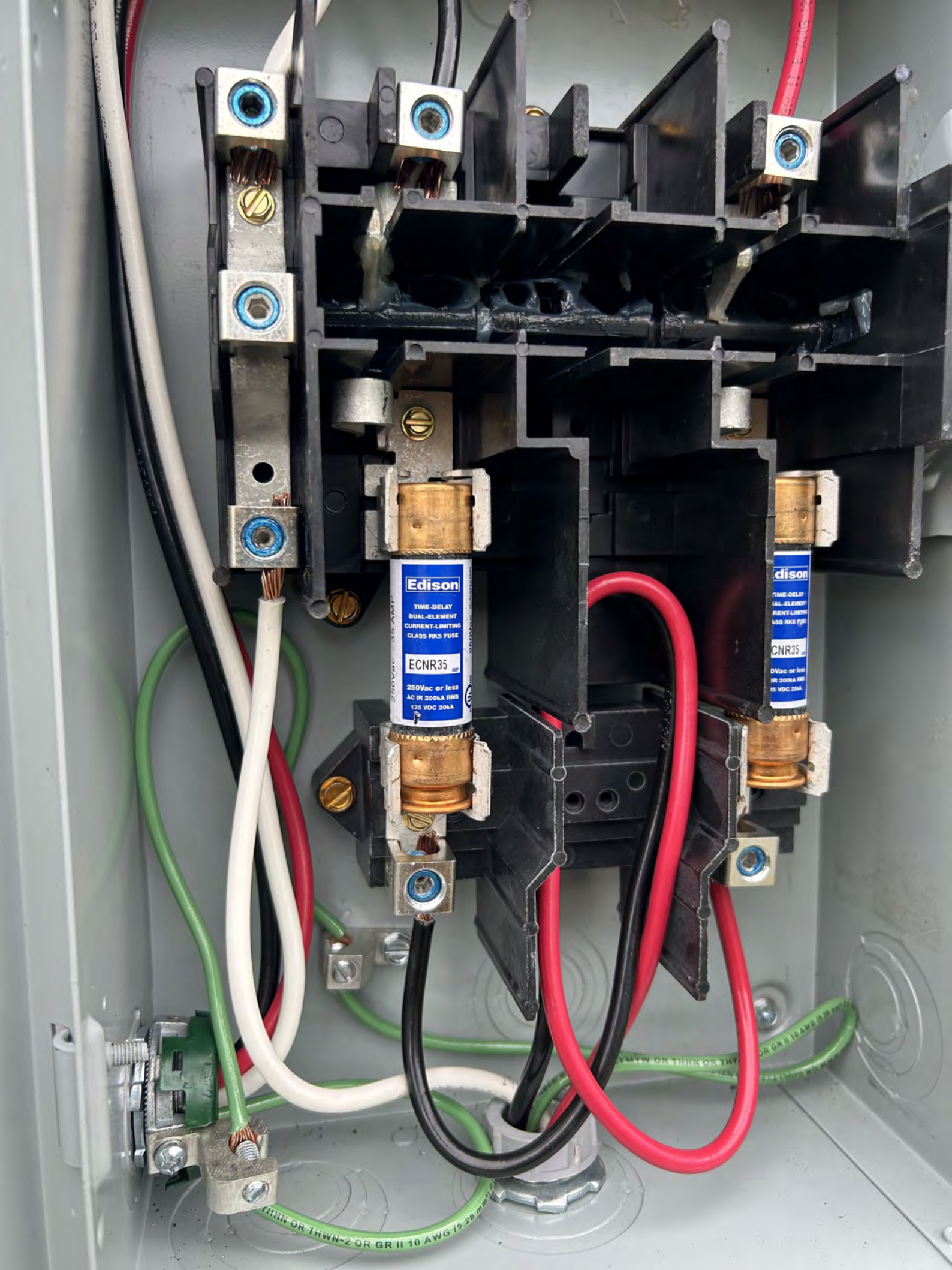
UL1 MTW OR THIN OR TH...
OR GR II 10 AWG (5.26 mm²) CU W...
THESE FUSES THIS NO PART...



TYPE 190 NYLON

Edison
TIME-DELAY
DUAL-ELEMENT
CURRENT-LIMITING
CLASS RK5 FUSE
ECNR35
250Vac or less
AC IR 200A RMS
125 VDC 20A

Edison
TIME-DELAY
DUAL-ELEMENT
CURRENT-LIMITING
CLASS RK5 FUSE
ECNR35
250Vac or less
AC IR 200A RMS
125 VDC 20A



Edison
TIME-DELAY
DUAL-ELEMENT
CURRENT-LIMITING
CLASS RK5 FUSE
ECNR35
250Vac or less
AC IR 200KA RMS
125 VDC 20KA

Edison
TIME-DELAY
DUAL-ELEMENT
CURRENT-LIMITING
CLASS RK5 FUSE
CNR35
250Vac or less
AC IR 200KA RMS
125 VDC 20KA

THHN OR THWN-2 OR GR II 10 AWG (5.26 mm²)

THHN OR THWN-2 OR GR II 10 AWG (5.26 mm²)

THHN OR THWN-2 OR GR II 10 AWG (5.26 mm²)

⚡ DANGER HAZARDOUS VOL. TAGS. WILL CAUSE SEVERE INJURY OR DEATH. Never operate switch with cover open. If fused, open OFF switch before removing or installing fuses. Always use a properly rated voltage sensing device at all line and load side fuse clips (F-hand) or load side terminals (L-hand) to verify switch is OFF. Turn OFF power ahead of switch before doing any work inside. Replace all parts. Close cover before returning power ON.	⚡ PELIGRO VOLTAJE PELIGROSO PUEDE CAUSAR HERIDAS SEVERAS O LA MUERTE. Nunca opere el interruptor con la cubierta abierta. Si el interruptor está fusible, haga un análisis de la posición antes de retirar o instalar fusibles. Haga el voltaje con un dispositivo de medición adecuado en todos los rangos de los clips de fusibles (L-hand) o en los terminales de carga (L-hand) no sea fusible) para comprobar que el interruptor está desenergizado. Desconecte la alimentación del interruptor antes de trabajar dentro del mismo. Reemplace todos los partes. Cierre la cubierta antes de energizar el interruptor.	⚡ DANGER SEVERE DANGEROUS. YOU CAN BE INJURED OR KILLED BY THE POWER. Do not touch live parts. Interlock or remove the cover to get access. If not fused, use a properly rated voltage sensing device at all line and load side fuse clips (F-hand) or load side terminals (L-hand) to verify switch is OFF. Turn OFF power ahead of switch before doing any work inside. Replace all parts. Close cover before returning power ON.
--	--	--

DG222NRB



Series 3
GENERAL USE SAFETY SWITCH
Type 2B Enclosure - Rugged

TERMINALS SUITABLE FOR AL-CU WIRE.
INTERMEDIOS DE USO GENERAL DE SEGURIDAD GENERAL.
Gabinete NEMA 3B - A Prueba De Lluvia

TERMINALES ADECUADAS PARA CONDUCTORES DE AL-CU.
INTERMEDIOS DE SEGURIDAD DE USOS GENERALES.
Envolope De Tipo 3B - A L'Ugrosos De La Pluie

BORNES CONVIENTOS PARA CONDUCTORES AL-CU
60 Amperes 120/240, 240, 127/220 V ~ 60Hz 3W 5/8, 2H N/S, 3F N/S

Horsepower Ratings	KW/Caballos de potencia		Regimes "Horsepower"	
	1 Phase/1 Fase	3 Phase/3 Fase *	2 Pole/2 Poles	4 Pole/4 Poles
Volts / Tension / Voltaje	Min. / Est. / Máx.	Min. / Est. / Máx.	Min. / Est. / Máx.	Min. / Est. / Máx.
120 / 127 ~	3 (1.115) / 3 (1.236)	3 (1.236) / 3 (1.236)	3 (1.236) / 3 (1.236)	3 (1.236) / 3 (1.236)
240 ~	3 (1.236) / 3 (1.236)	3 (1.236) / 3 (1.236)	3 (1.236) / 3 (1.236)	3 (1.236) / 3 (1.236)

*For grounded 3 Phase systems only.
Maximum fuses are 60A.
The starting current of motors of more than the standard horsepower ratings may require the use of fuses with appropriate time-delay characteristics.
Continuous load current not to exceed 80% of the rating of fuses employed in other than motor circuits.
Suitable for use in service equipment delivering not more than 100,000 RMS symmetrical amperes, 240V - maximum, when Class R fuses are used. Fuse size for use on a circuit capable of delivering not more than 100,000 RMS symmetrical amperes, 240V - maximum, when Class R fuses are used.
DANGER - Joints Class R fuses are used, this switch may present a risk of fire and personal injury if installed on circuits capable of delivering more than 10,000 RMS symmetrical amperes.
When used with Class R or R fuses, suitable for use on a circuit capable of delivering not more than 10,000 RMS symmetrical amperes, 240 volts maximum.
Experience has shown that removable fuses can cause overamping problems and thus the use of removable fuses is not recommended.
Use 40°C or 75°C wire.
Listed for use / Fuses cross lists 1/127/220 LB - in
Wiring range
14 - 10 AWG, 2 to 3.5 mm² AL - CU

Accessories
Install per instructions supplied with kit.
Fuses 60 A D222008
Grounding lug D222008
Neutral kit D222008
3/4" (19.05mm) Hub size D222001
1/2" (12.7mm) Hub size D222001
1/4" (6.35mm) Hub size D222001
2" (50.8mm) Hub size D222001

Accessories
Instalar de acuerdo a instrucciones incluidas en los accesorios.
Fusibles 60 A D222008
Junto de tierra D222008
Junto de neutro D222001
1/2" (12.7mm) Tamaño de cable D222001
1/4" (6.35mm) Tamaño de cable D222001
2" (50.8mm) Tamaño de cable D222001

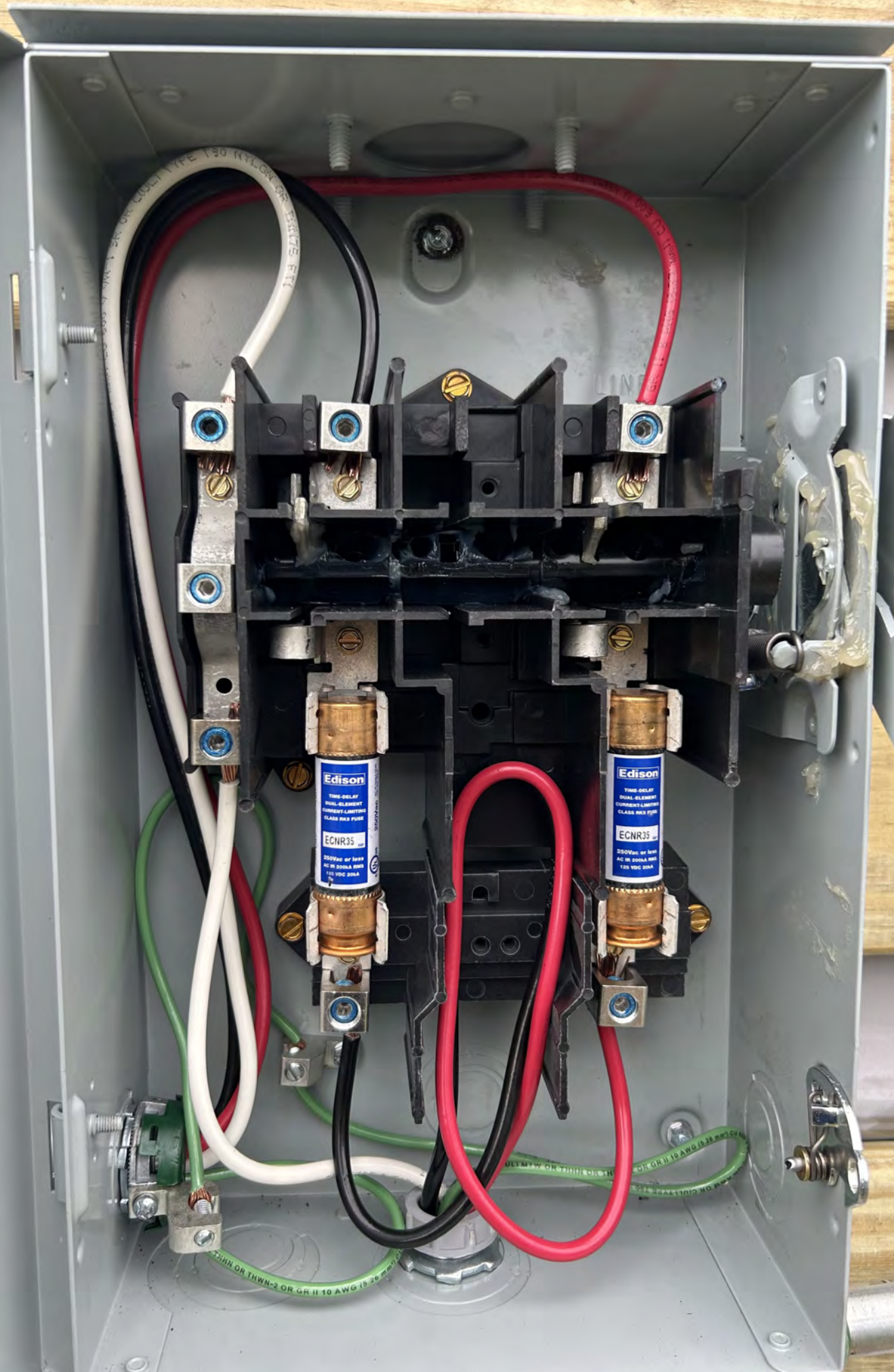
Accessories
Installez conformément aux directives fournies avec l'ensemble.
Fusibles 60 A D222008
Ensemble de bornes D222001
Ensemble de neutre D222001
3/4" (19.05mm) Calibre des manchons D222001
1/2" (12.7mm) Calibre des manchons D222001
1/4" (6.35mm) Calibre des manchons D222001
2" (50.8mm) Calibre des manchons D222001

Insulation DV
714745

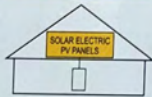


abandon
capacité
rés. de 100
en habites
surs
arrêter
métaux en
amériques.
à usure en
CM américains.
en causer
habiles
1/31 mm /
pour les
autres ayant des
habiles
habiles au plus
vint collées.
est intercompu
en courants à 15 et
avec les autres.
appareils pour
200 ampères RMS
200 ampères RMS
habiles en
habiles en

W13-1/4
PUB53724



**SOLAR PV SYSTEM
EQUIPPED WITH
RAPID SHUTDOWN**



TURN RAPID SHUTDOWN SWITCH TO THE "OFF" POSITION TO SHUT DOWN PV SYSTEM AND REDUCE SHOCK HAZARD IN THE ARRAY

WARNING
THIS EQUIPMENT FED BY MULTIPLE SOURCES. TOTAL RATING OF ALL OVERCURRENT DEVICES, EXCLUDING MAIN SUPPLY OVERCURRENT DEVICE, SHALL NOT EXCEED AMPACITY OF BUSBAR.

solaredge

HD wave

PV SYSTEM DC DISCONNECT
MAXIMUM VOLTAGE **480V**
MAXIMUM CIRCUIT CURRENT **145**
MAXIMUM RATED OUTPUT CURRENT OF THE CHARGE CONTROLLER OR DC TO DC CONVERTER (IF INSTALLED)

DC DISCONNECT

ON
OFF

A white rotary switch with a black knob. The knob is currently pointing towards the 'ON' position. The words 'ON' and 'OFF' are printed on the switch face.

**RAPID SHUTDOWN
SWITCH FOR
SOLAR PV SYSTEM**

solaredge

PHOTOVOLTAIC POWER SOURCE

EAT·N

General Duty Safety Switch
Interrupteur de sécurité à usage général
Interruptor de seguridad de servicio general
60 A, 240 V, 60 Hz
Complexe ratings table
Valeurs nominales complètes à l'intérieur
Información completa de capacidades en el interior
Further instructions inside
Autres instructions à l'intérieur
Instrucciones adicionales en el interior
Made in U.S.A. / Fabriqué aux E.U. / Hecho en E.U.A.

⚠ DANGER
WARNING: This device is designed to protect against electric shock. It is not intended to protect against fire or explosion. Do not use this device in hazardous locations. For more information, see the instructions inside the device.

⚠ PELIGRO
ADVERTENCIA: Este dispositivo está diseñado para proteger contra el choque eléctrico. No está diseñado para proteger contra incendios o explosiones. No use este dispositivo en lugares peligrosos. Para obtener más información, consulte las instrucciones dentro del dispositivo.



⚠ WARNING
ELECTRIC SHOCK HAZARD
TERMINALS ON THE LINE AND
LOAD SIDES MAY BE ENERGIZED
IN THE OPEN POSITION

**RAPID SHUTDOWN
SWITCH FOR
SOLAR PV SYSTEM**

AC DISCONNECT
PHOTOVOLTAIC SYSTEM
POWER SOURCE
RATED AC
OUTPUT CURRENT **25** AMPS
NOMINAL OPERATING
AC VOLTAGE **240** VOLTS

ON

OFF
C



OFF
○

AC DISCONNECT

PHOTOVOLTAIC SYSTEM
POWER SOURCE

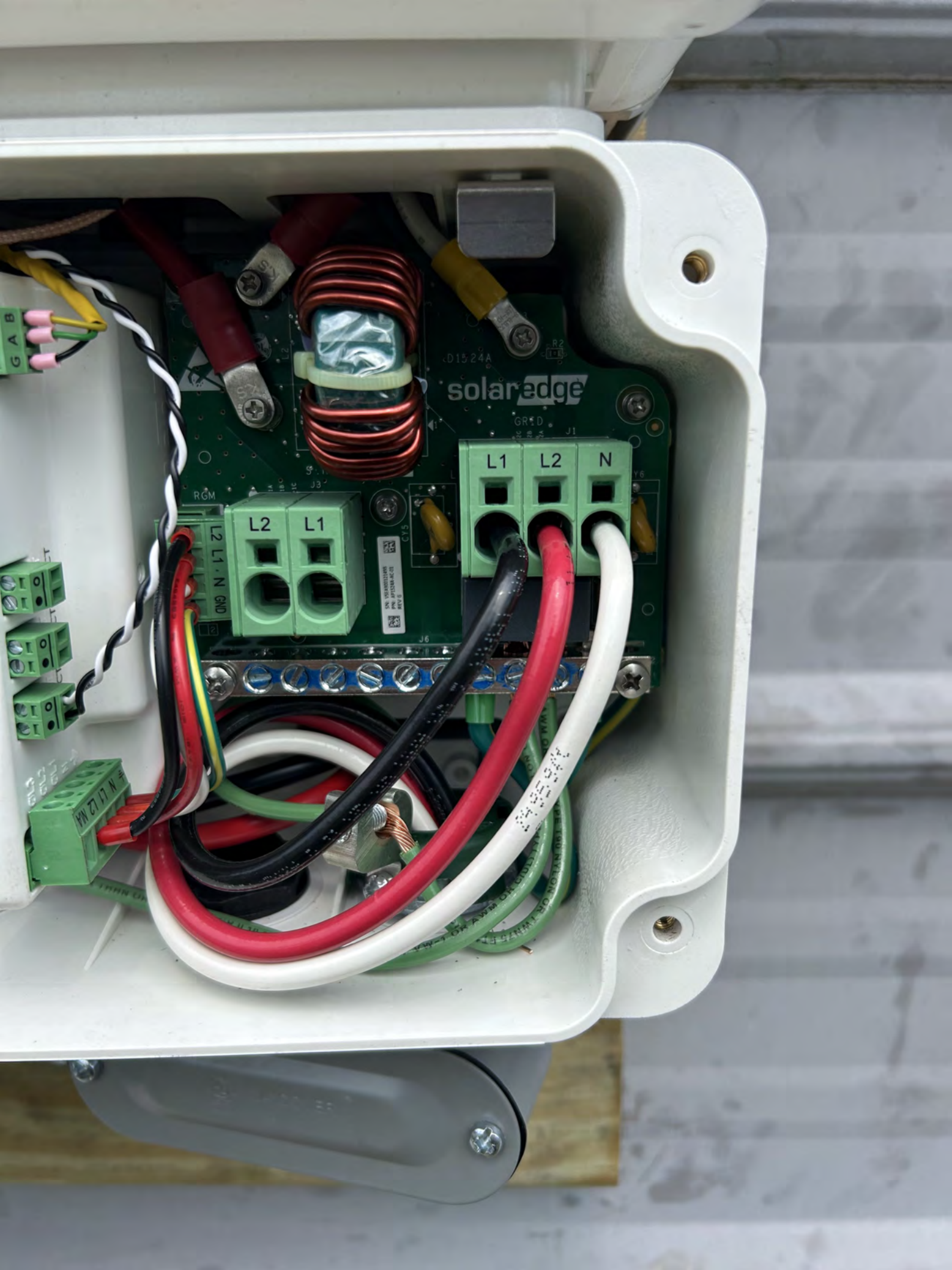
RATED AC
OUTPUT CURRENT **25** AMPS

NOMINAL OPERATING
AC VOLTAGE **240** VOLTS

pvlabels.com

03-306





D1524A

solar edge

GRND

L1

L2

N

L2

L1

L2

L1

N

GRND

RGM

100%
SOLAR
ELECTRONICS
P.O. BOX 1000
MILWAUKEE, WI 53211
USA

WV 217 N



L1

L2

N

L2

L1

RGM

1A
1B
1C

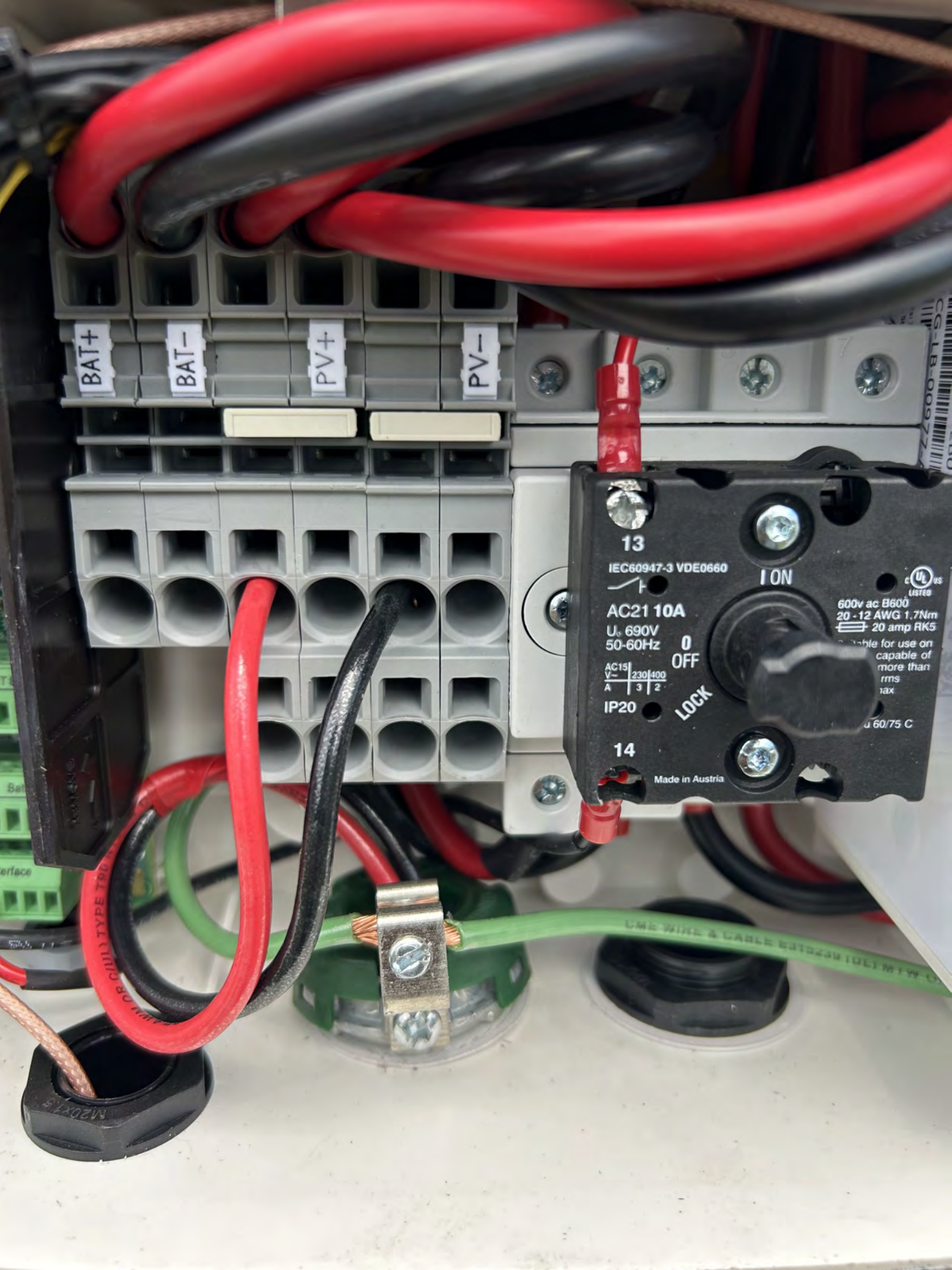
L2

1

SHUT
DE

10 AWG 15.25 mm

425554



BAT+

BAT-

PV+

PV-

13

IEC60947-3 VDE0660



ON

AC21 10A

U. 690V

50-60Hz

AC15

V 230/400

A 3 | 2

IP20

OFF

LOCK

14

Made in Austria



600v ac B600
20 - 12 AWG 1.7Nm
20 amp RK5
Suitable for use on
capable of
more than
rms
tax

u 60/75 C

CS-LB-009722

MIN OR CHILL TYPE T80

ONE WIRE & CABLE BETWEEN WIRE

M20x1.5



E-T-N
RATED 100 AMP
120/240 VOLT
1-PHASE
3-WIRE
SERVO MOTOR
OPERATED
BY
E-T-N
RATED 100 AMP
120/240 VOLT
1-PHASE
3-WIRE
SERVO MOTOR
OPERATED
BY
E-T-N

WARNING
Rapid Shutdown
Switch for
Solar PV System

AC DISCONNECT
100 AMP
120/240 VOLT
1-PHASE
3-WIRE
SERVO MOTOR
OPERATED
BY
E-T-N

WARNING
Rapid Shutdown
Switch for
Solar PV System

AC DISCONNECT
100 AMP
120/240 VOLT
1-PHASE
3-WIRE
SERVO MOTOR
OPERATED
BY
E-T-N

PV SYSTEM DC DISCONNECT

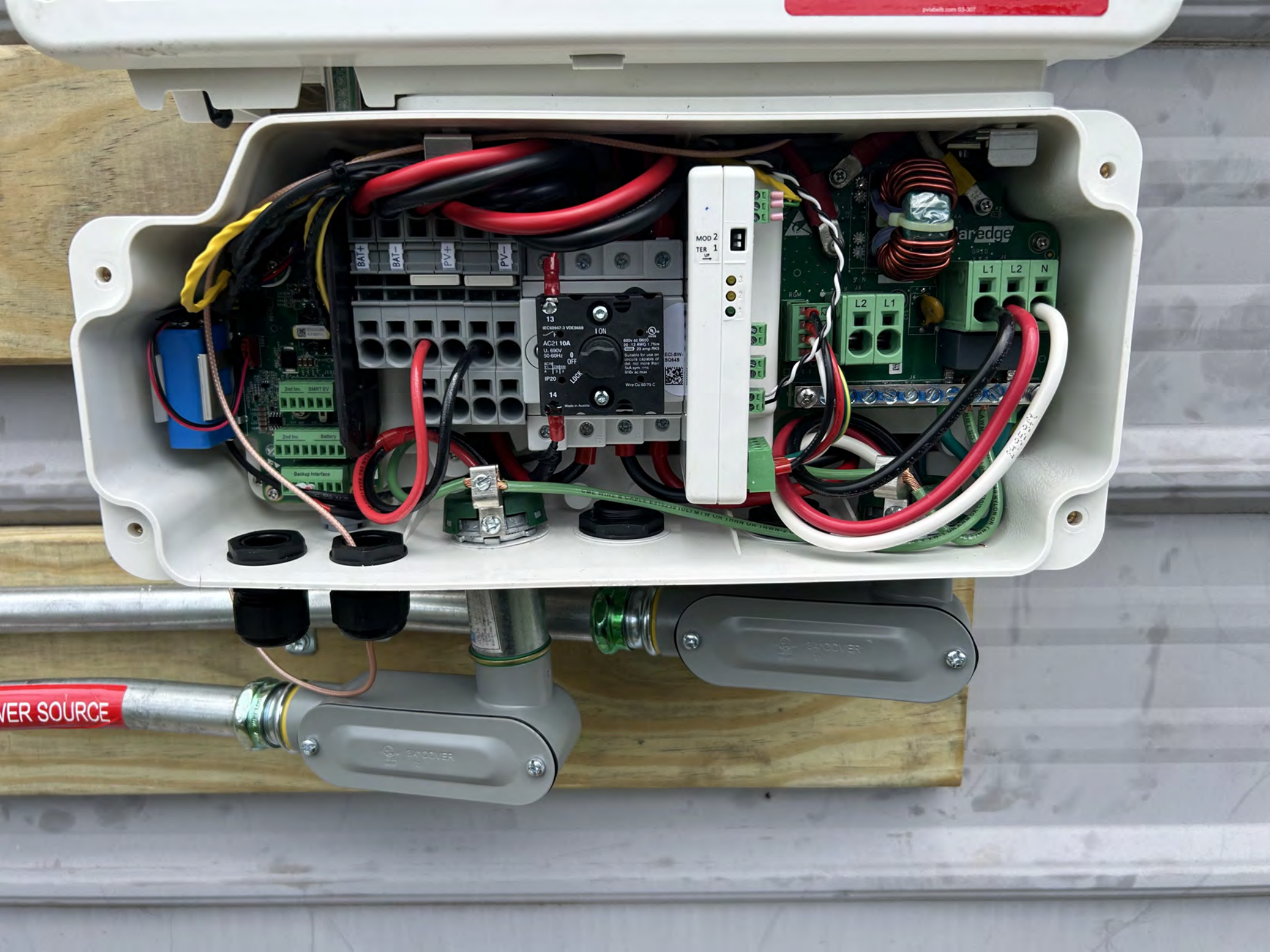
MAXIMUM VOLTAGE

480V

MAXIMUM CIRCUIT CURRENT

16.5A

MAXIMUM RATED OUTPUT
CURRENT OF THE CHARGE
CONTROLLER OR DC TO DC
CONVERTER (IF INSTALLED)





BAT+

BAT-

SECS-CX-00007
-ALF-4521-YJ

SolarEdge
D1515B

2nd Inv. SMRT EV

2nd Inv. Battery

Backup Interface

NO
SERIAL
TYPE
TYPE 100 NYI



SOURCE





E-T-N

WARNING
CAUTION: TO PREVENT PERSONAL INJURY OR PROPERTY DAMAGE, ALWAYS USE THE CORRECT WIRING METHODS AND FOLLOW THE INSTRUCTIONS IN THE MANUAL.

RAPID SHUTDOWN SWITCH FOR SOLAR PV SYSTEM

AC DISCONNECT
REMOVES AC POWER FROM THE SYSTEM
RATED VOLTAGE: **600** VAC
RATED CURRENT: **400** A

SOLAR PV SYSTEM EQUIPPED WITH RAPID SHUTDOWN

WARNING
THIS EQUIPMENT HAS AN INVERTER. ALWAYS USE THE CORRECT WIRING METHODS AND FOLLOW THE INSTRUCTIONS IN THE MANUAL. ALWAYS WEAR APPROPRIATE SAFETY GEAR AND FOLLOW THE INSTRUCTIONS IN THE MANUAL.

PHOTOVOLTAIC POWER SOURCE

solar edge **HD w3v8**

DC DISCONNECT
REMOVES DC POWER FROM THE SYSTEM
RATED VOLTAGE: **250** VDC
RATED CURRENT: **25** A

DC DISCONNECT

RAPID SHUTDOWN SWITCH FOR SOLAR PV SYSTEM

solar edge

PHOTOVOLTAIC POWER SOURCE



mpace
AMERICAN

E-T-N
WARNING
Rapid Shutdown
Switch for
Solar PV System
AC DISCONNECT
RATED FOR USE WITH
SOLAR PV SYSTEMS
UL 489B-1
UL 489B-2

**SOLAR PV SYSTEM
EQUIPPED WITH
RAPID SHUTDOWN**
WARNING
This disconnect switch is designed to be used in conjunction with a solar PV system equipped with rapid shutdown. It is not intended for use with any other type of electrical load.
DC DISCONNECT
RATED FOR USE WITH
SOLAR PV SYSTEMS
UL 489B-1
UL 489B-2
solar **HD** **HD** **HD**

DC DISCONNECT
**RAPID SHUTDOWN
SWITCH FOR
SOLAR PV SYSTEM**

AUTOMATIC POWER SOURCE



solaredge

StorEdge Connection Unit



Max DC Voltage (PV/Battery)	480 Vdc
Max DC Current (PV)	51 Adc
Max Continuous DC Current (Battery)	31 Adc
Max AC Voltage	264 Vac
AC-Single Phase Frequency	50/60 Hz
Max AC Current (Grid)	40 Aac

For more details refer to the installation guide
Patent marketing notice: see WWW.SOLAREEDGE.COM/patent

DCD-1PH-US-P3H-F-I

PN:

SV1323-19191D5C5-BC

SN:

Made in Vietnam



Intertek
4004590



solaredge

StorEdge Connection Unit



Max AC Current (Smart EV Charger)	40Aac
Max Continuous Output Power (Smart EV Charger)	9600W

Ambient Temperature: -40°C ..60°C
Enclosure Rating: IP65/ Type 4X

For more details refer to the installation guide
Patent marketing notice: see WWW.SOLAREEDGE.COM/patent

Use 90° C copper PV wires only.
Revenue Grade ANSI C12.20
PHOTOVOLTAIC RAPID SHUTDOWN SYSTEM

DCD-1PH-US-P3H-F-I

PN:

SV1323-19191D5C5-BC

SN:

Made in Vietnam



Intertek
4004590



solar edge SE6000H - US
**Grid Support Utility Interactive
 Non-Isolated Photovoltaic Inverter**

Operating Voltage Range 270 - 480Vdc
 Max Input Current 16.5Adc
 Max Continuous Output Power 5000Wac @ 208V 8000Wac @ 240V
 Voltage Min - Nom - Max 183 - 208 - 228Vac
 211 - 240 - 264Vac
 Max Continuous Output Current 24Aac @ 208V 25Aac @ 240V
 Max Output Fault Current 72Aac
 Max Utility Backfeed Current 0Aac
 Frequency Min - Nom - Max 59.3 - 60.0 - 60.5Hz
 Output Power Factor +/- 0.85 - 1
 Max Ambient Temperature 60 C
 Enclosure IP65 / Type 3R
 With integrated ground fault protection per NEC 890.35 (C)
 Type 1 Photovoltaic Arc - Fault Circuit - Protection

WI - Fi Password: Mr9e1CAe
 Activation: RIZW 1AkJ 5612 4a// ZmJF 6qwg amU -

WIFI MAC:
 84:D6:C5:4A:9C:38
 ZigBee MAC:




ETL LISTED
 CONFORMS TO
 ANSI/UL 1741
 CERTIFIED TO
 CAN/CSA
 C22.2 NO 107

Intertek
 4004590

PN: SE6000H - USSNBBL14
 SN: SV1423 - 075020A67 - E8



solar edge



**PHOTOVOLTAIC RAPID
 SHUTDOWN SYSTEM**

solar edge



ETL LISTED
 CONFORMS TO
 ANSI/UL 1741
 CERTIFIED TO
 CAN/CSA
 C22.2 NO 107



Intertek
 4004590

75020A67 - E8



Contains FCC ID: 2AGPT-PLNX, IC: 20916-PNLX. The enclosed device complies with part 15 of the FCC Rules. Operation is subject to the following two conditions:
 (i.) this device may not cause harmful interference and
 (ii.) this device must accept any interference received, including interference that may cause undesired operation.

PATENT MARKING NOTICE-SEE www.solaredge.com/groups/patent Made In Vietnam