





TOVOLTAC
SOURCE

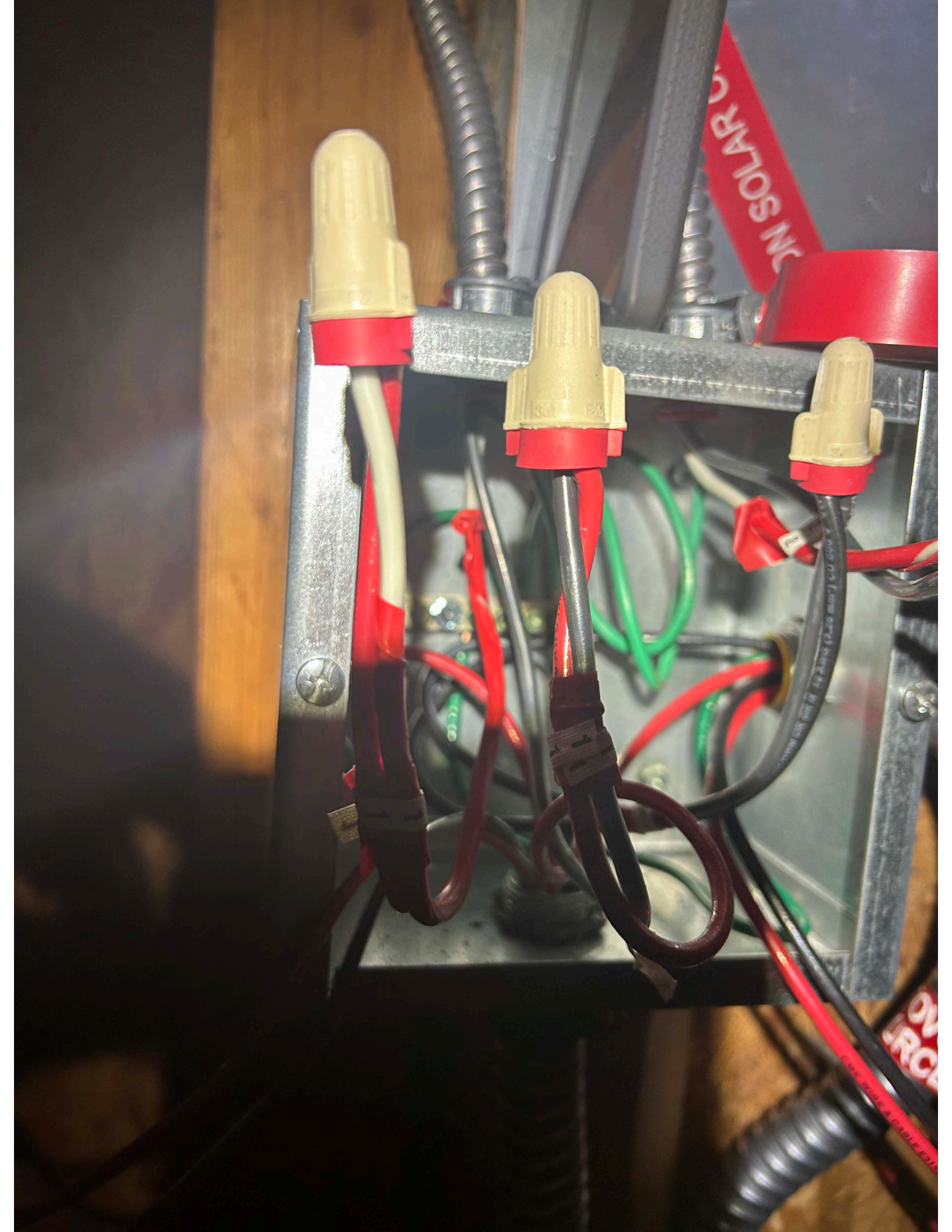


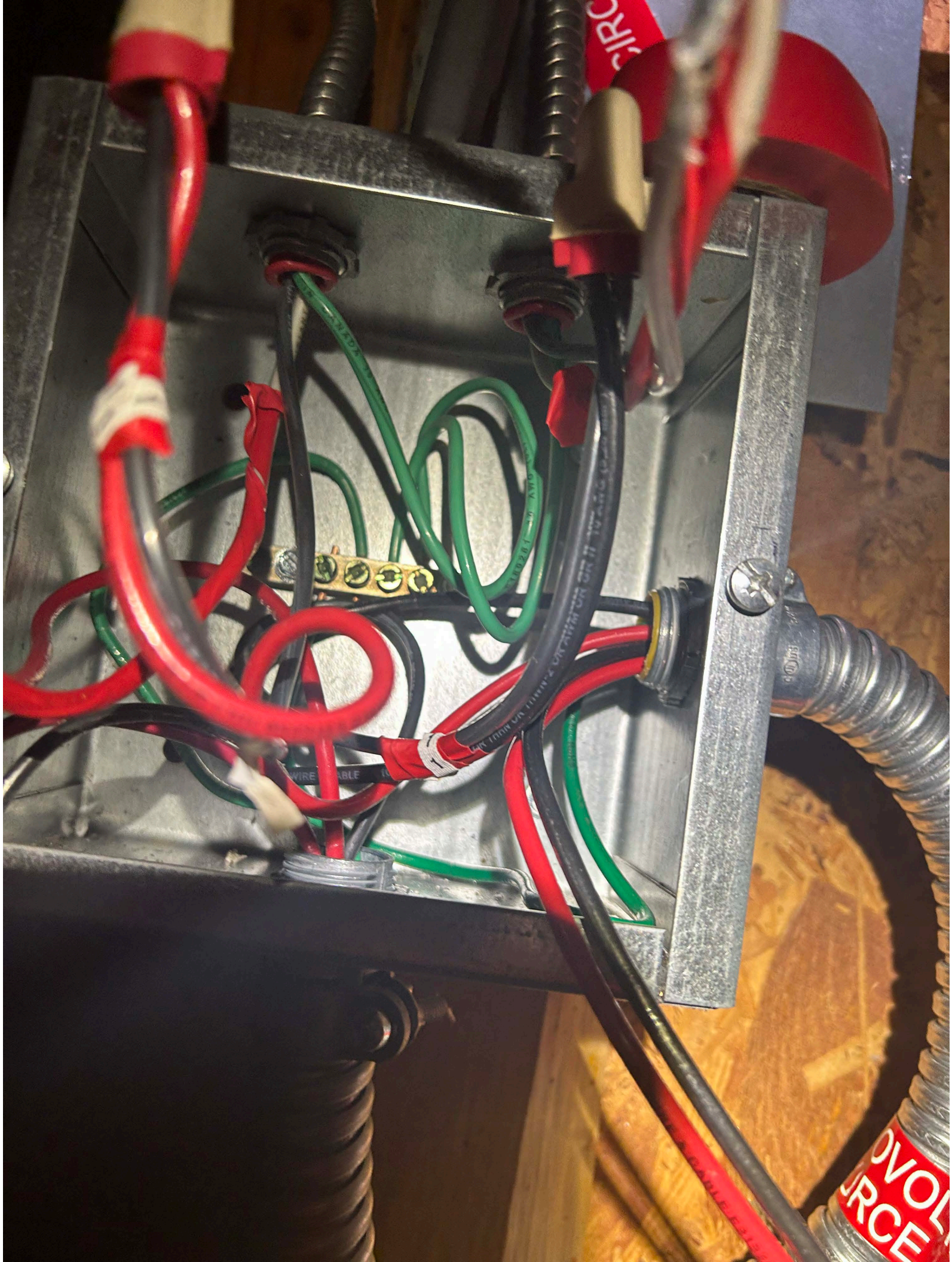


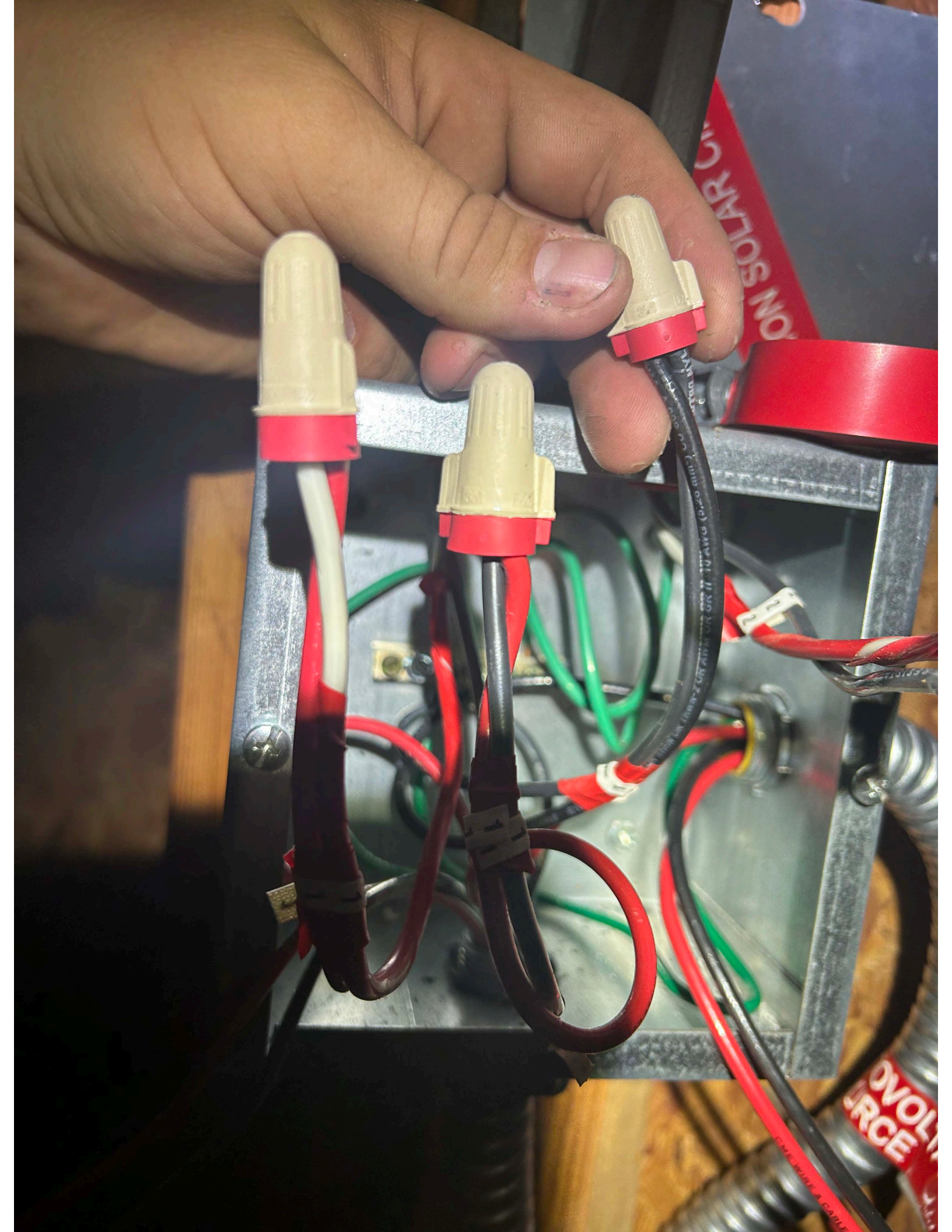


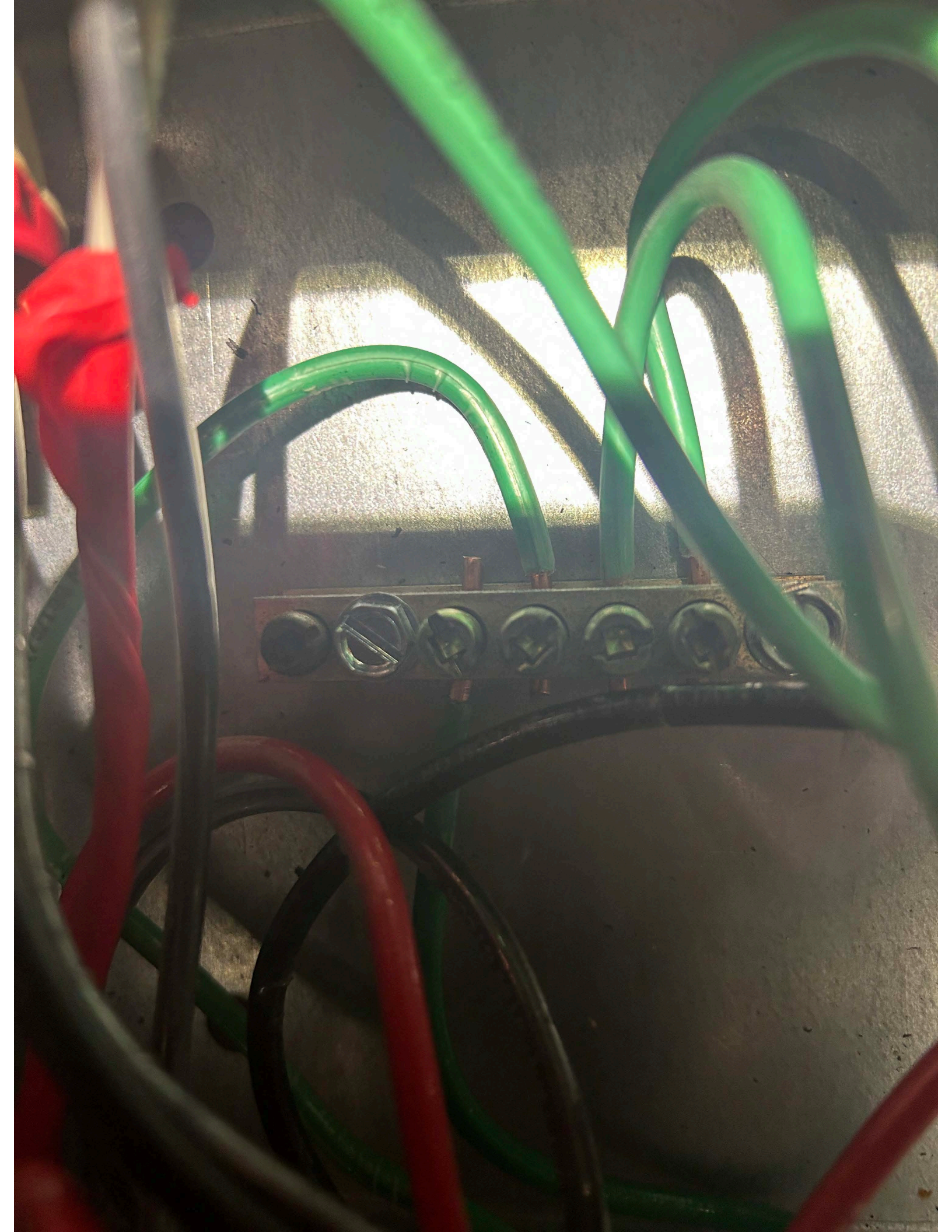


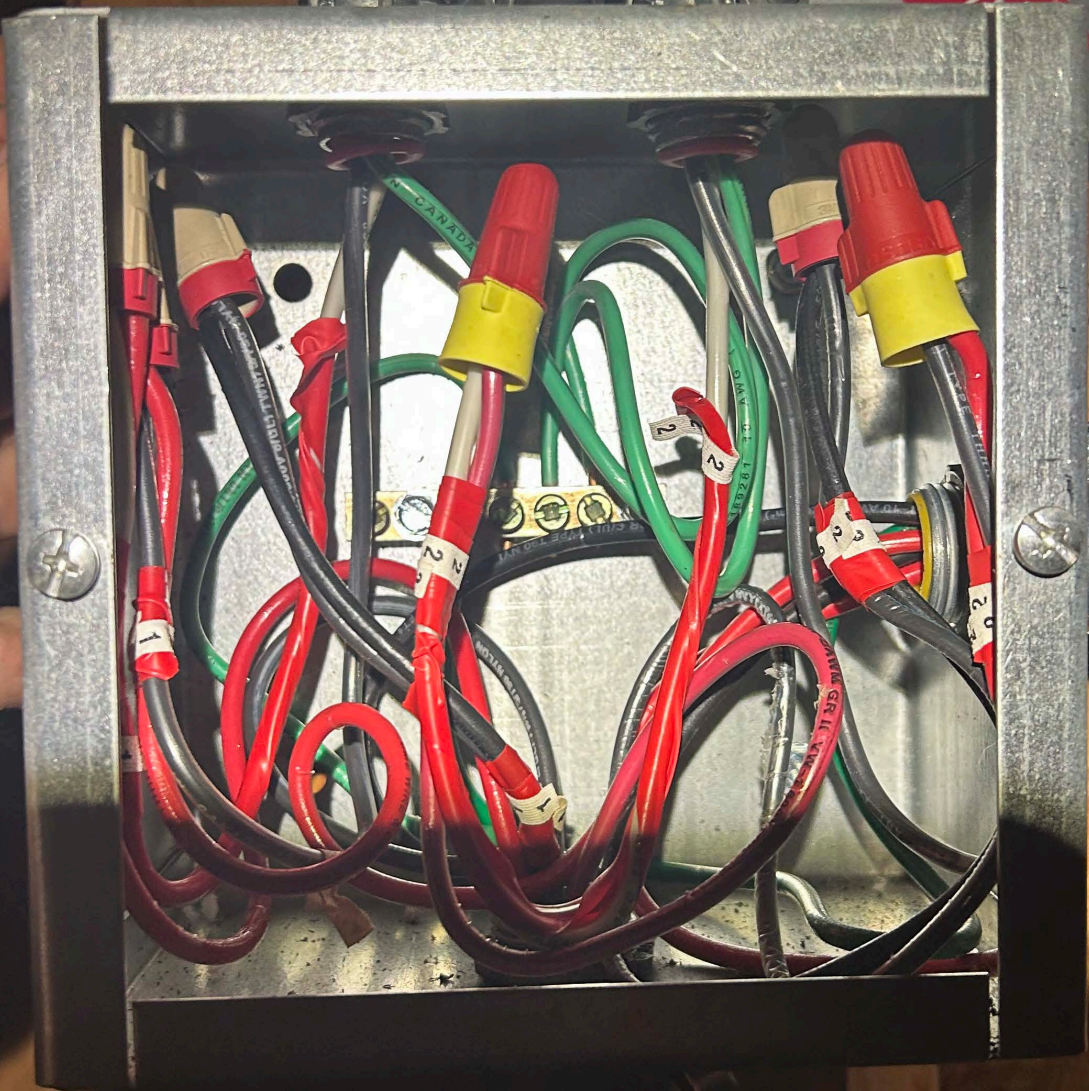
VOL
RCE











UTION SOLAR CIRCU

DVO
URCE



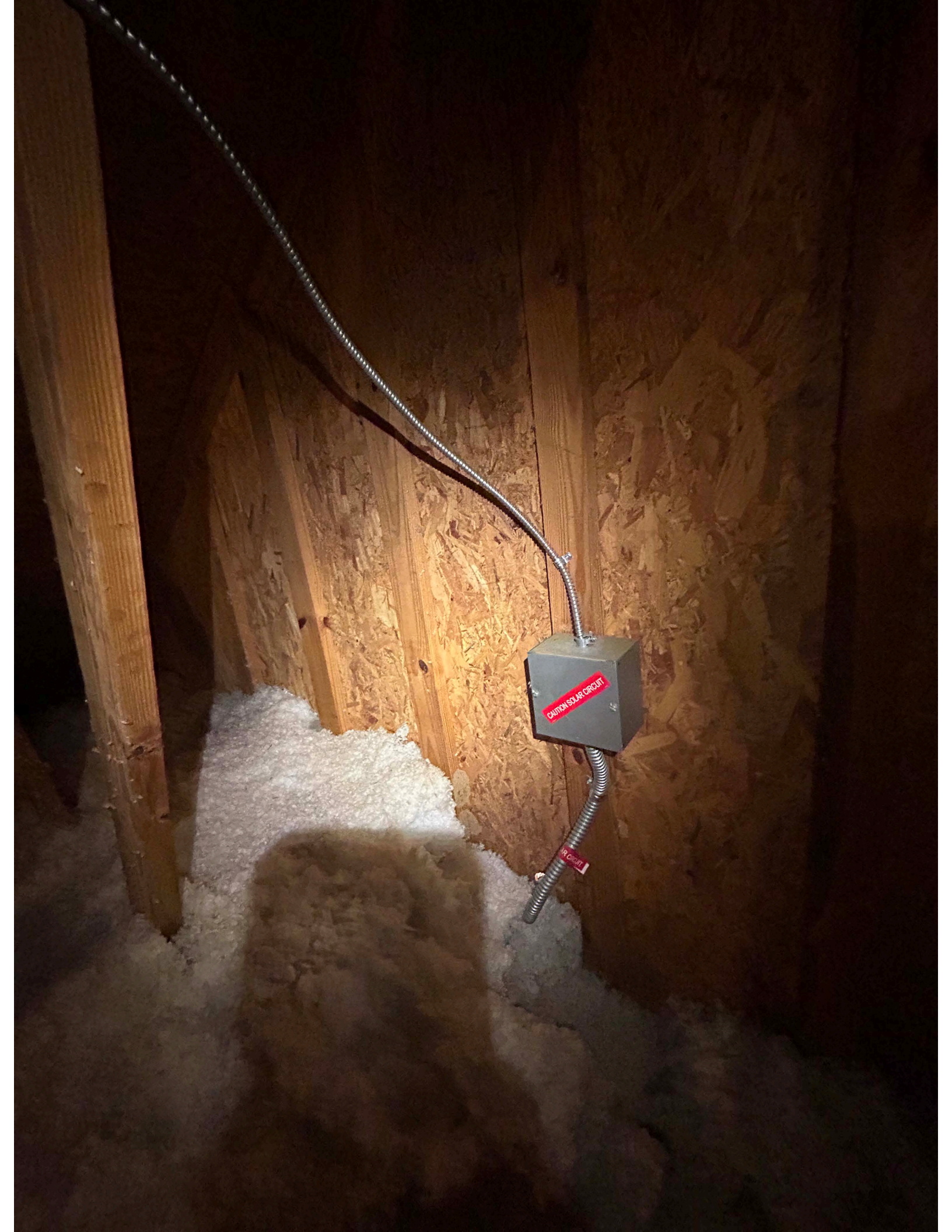






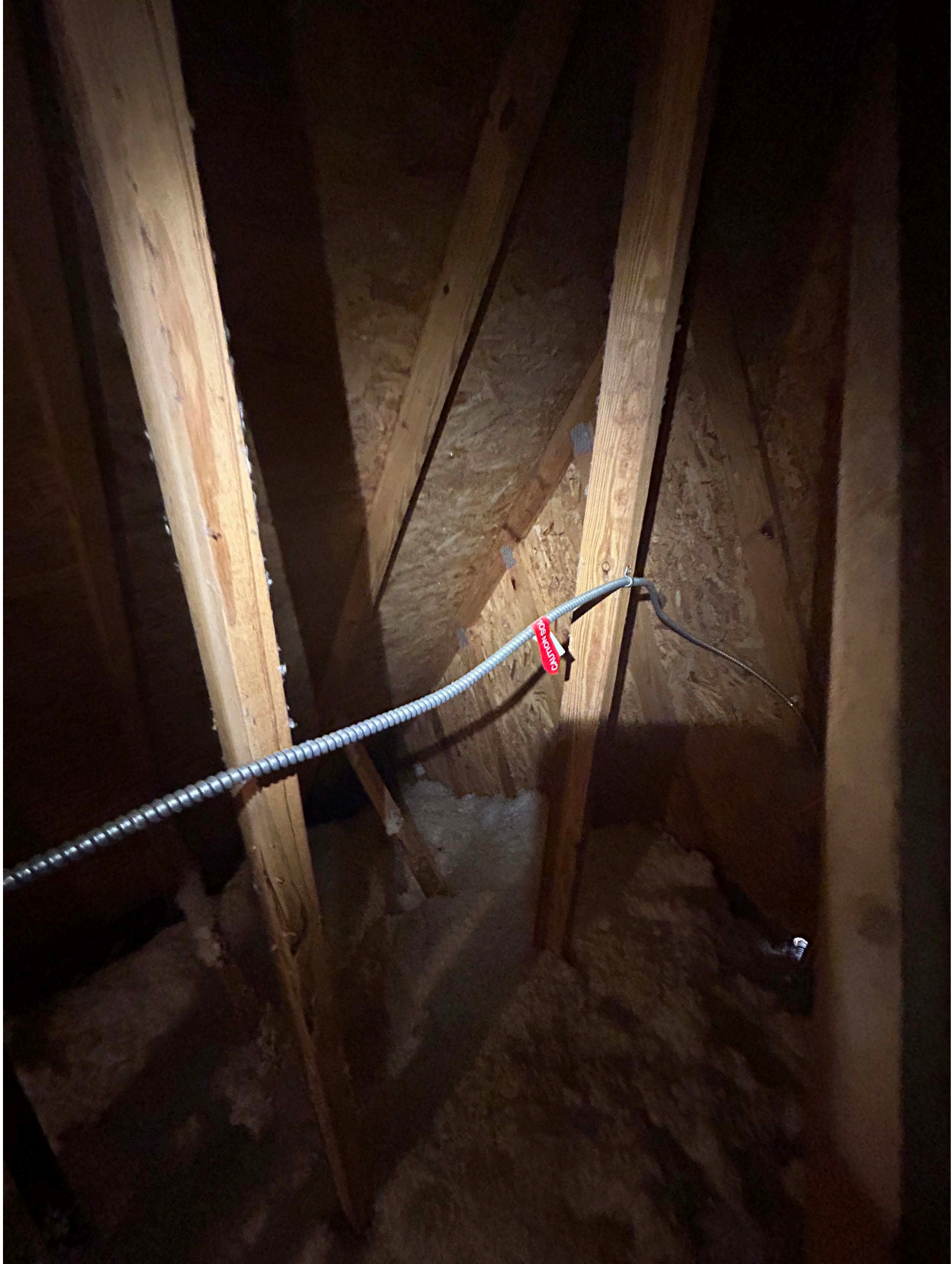






CAUTION SOLAR CIRCUIT

R Circuit



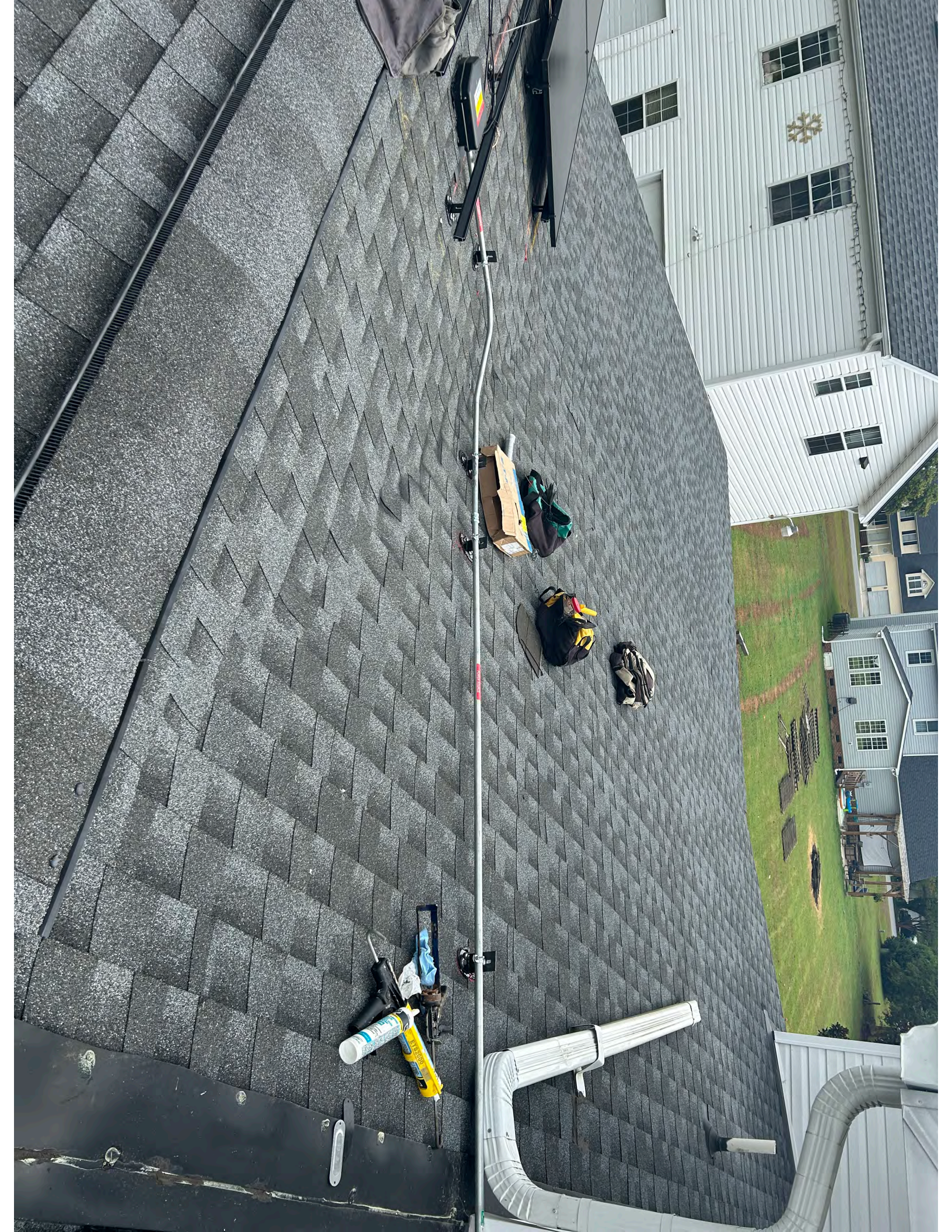
CAUTION SOLAR CIRCUIT

WARNING
POV

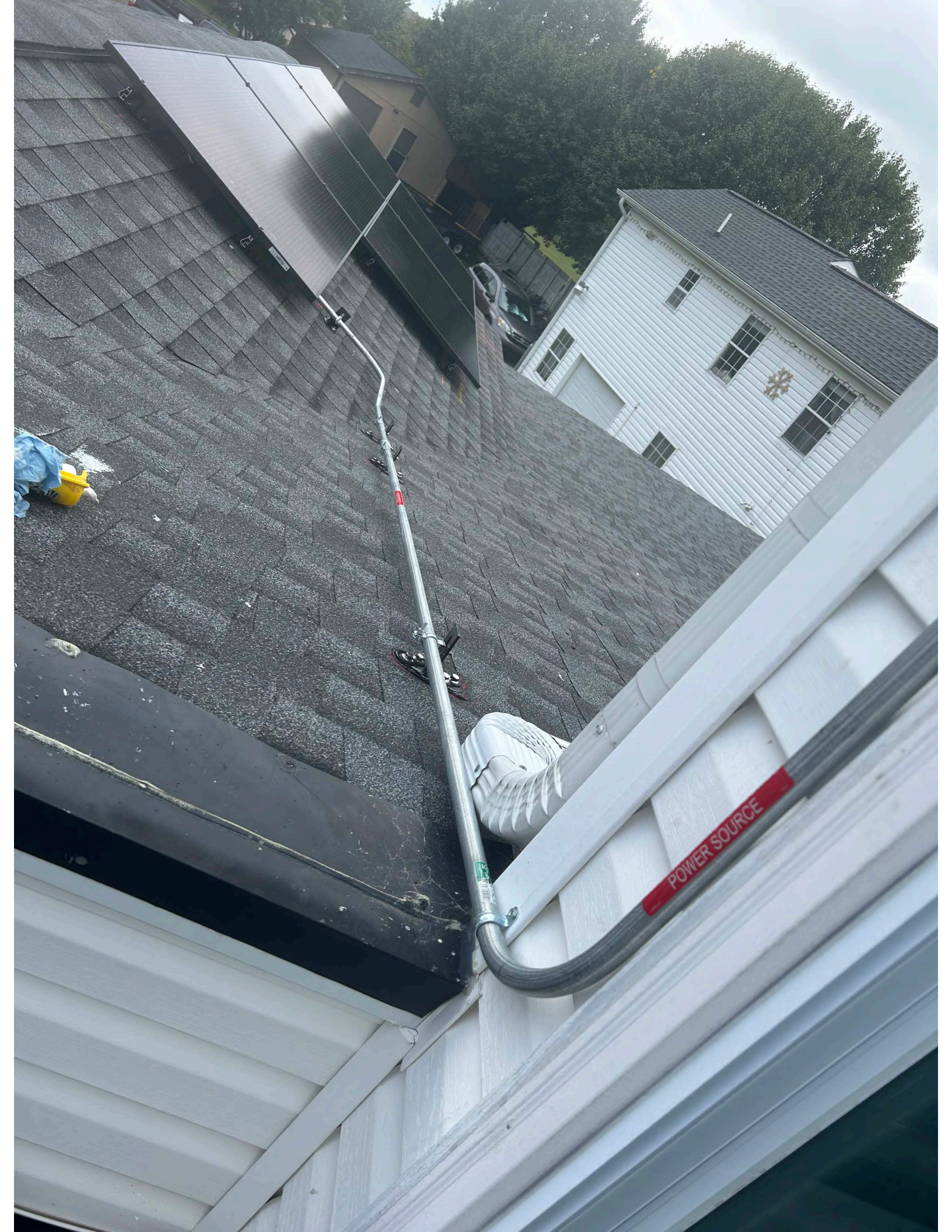
WARNING
POV















REC N-Peak 2 Black Series
 REC365NP2 Black
 Serial Number: FBB-2009827454

Power Output (Pmax) 365 W
 Power Class Sorting 0/+3%
 Rated Voltage (Vmp) +/3%
 Open Circuit Voltage (Voc) (+/- 3%)
 Short Circuit Current (Isc) (+/- 3%)
 Maximum System Voltage (Vsys) +4666 / -7000 Pa*
 Maximum Series Fuse (DC) (UL) 25 A
 Maximum Test Load 25 A
 Design Load 25 A
 Maximum Series Fuse (DC) (IEC) +4666 / -2666 Pa*
 Maximum Series Fuse (DC) (UL) 25 A

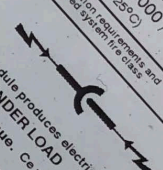
(Values at STC: 1000 W/m² AM 1.5, cell temp 25°C)
 *The installation manual for residential installation requirements and
 the installation requirements to achieve a declared system life class



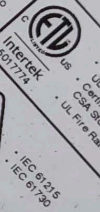
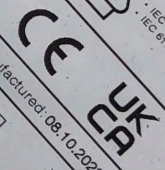
Warning electrical hazard. This module produces electricity when exposed to light.
 CAUTION: DO NOT DISCONNECT UNDER LOAD
 Avertissement: Risque de choc électrique. Ce module solaire produit de l'électricité lorsqu'il est exposé à la lumière.



ATTENTION: NE PAS DECONNECTER SOUS TENSION
 For field connections, use min. 4 mm² (12 AWG) UL PV wires insulated for a min. of 90°C
 Made in Singapore by REC Solar PTE LTD
 20 TUAS SOUTH AVENUE 14 SINGAPORE 637312, SINGAPORE
 EU/Europe Contact: REC Solar EMEA GmbH
 Balanstr. 7, 81341, Munich, Germany, Tel: +49 (0)89-442-38390
 For other regions see: www.recgroup.com/contact

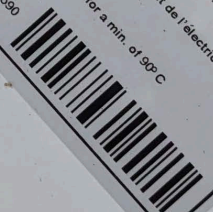


Manufactured 08.10.2022



Intertek
 501774
 EC 81315
 EC 61730

Phone: +85 6495 9228
 www.recgroup.com





Do Not Remove 177D3AF0-BE

ETL
 SolarEdge Technologies Ltd.
 SolarEdge Technologies GmbH/
 Werner-Eckert-Strasse 6/81829 Munich/Germany



CAUTION

HOT SURFACES-TO REDUCE THE RISK OF BURNS-DO NOT TOUCH. THE RISK OF ELECTRIC SHOCK-WHEN THE PHOTOVOLTAIC ARRAY IS EXPOSED TO LIGHT, IT SUPPLIES A DC VOLTAGE TO EQUIPMENT. COVER PV MODULE WITH OPAQUE MATERIAL BEFORE CONNECTING OR DISCONNECTING THIS OPTIMIZER. DURING FAULT, ZERO CURRENT IS SOURCED INTO DC ARRAY BY CONVERTER.

WARNING

ELECTRIC SHOCK HAZARD. THE DC CONDUCTORS OF THIS PHOTOVOLTAIC SYSTEM ARE UNGROUNDED AND MAY BE ENERGIZED.

AVERTISSEMENT

RISQUE DE CHOC ELECTRIQUE: QUAND LE CHAMP PHOTOVOLTAIQUE EST EXPOSE A LA LUMIERE, UNE TENSION CC EST FOURNIE A CET EQUIPEMENT. SURFACES CHAUDES: NE PAS TOUCHER, AFIN DE REDUIRE LES RISQUES DE BRULURES LE COURANT DE RETOUR INJECTE PAR LE CONVERTISSEUR EN CAS DE DEFAILLANCE DANS LE MODULE PV EST TOUJOURS NUL.





DC Output: 40W/5-60V/1.5A
DC Input: 8-60V/1.5A
DC Output Voltage: 5V
S15122-01/7D3AF0-BE
MA03
Israel



DC-DC Converter

12AWG 100°C 0.1" dia
PV Wire
(US)



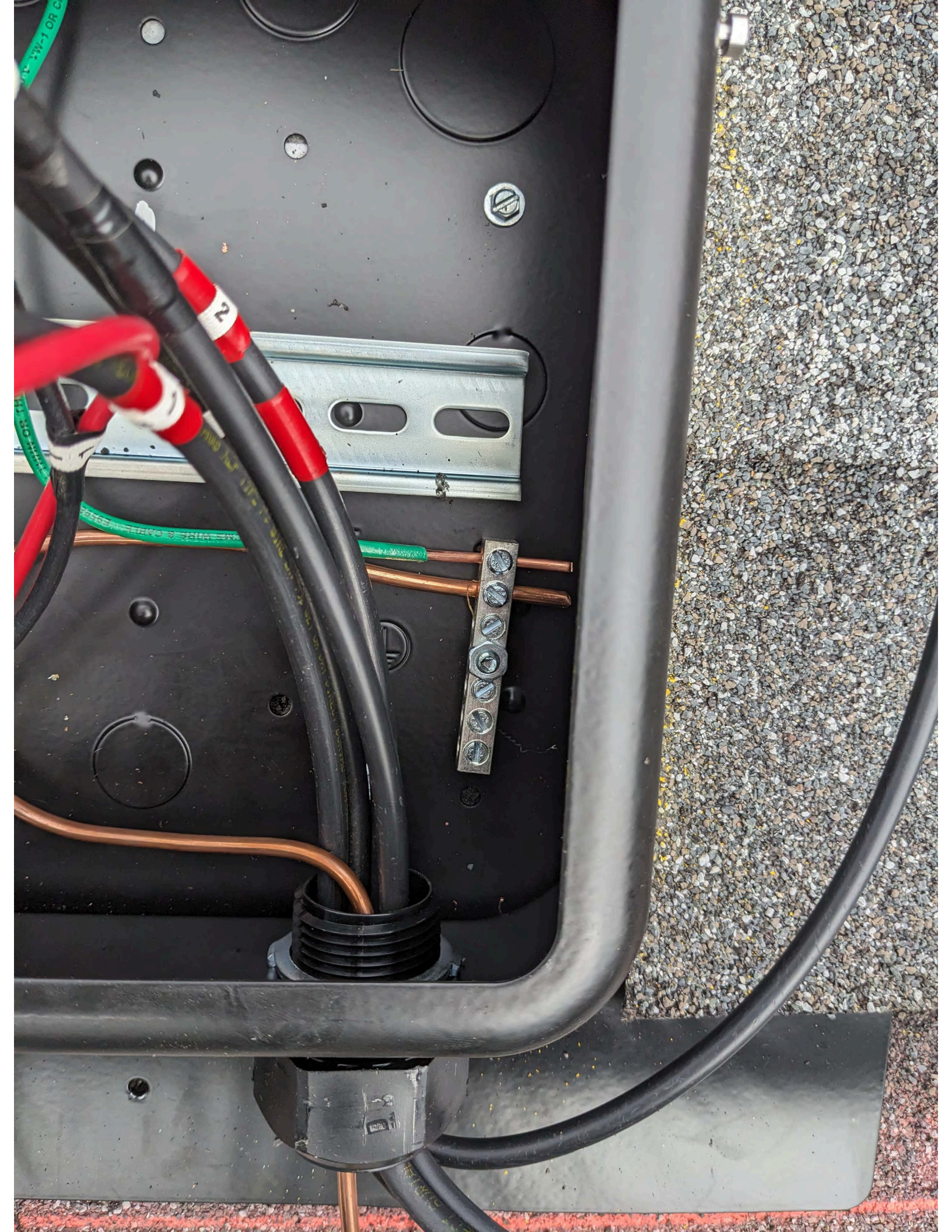


30mm







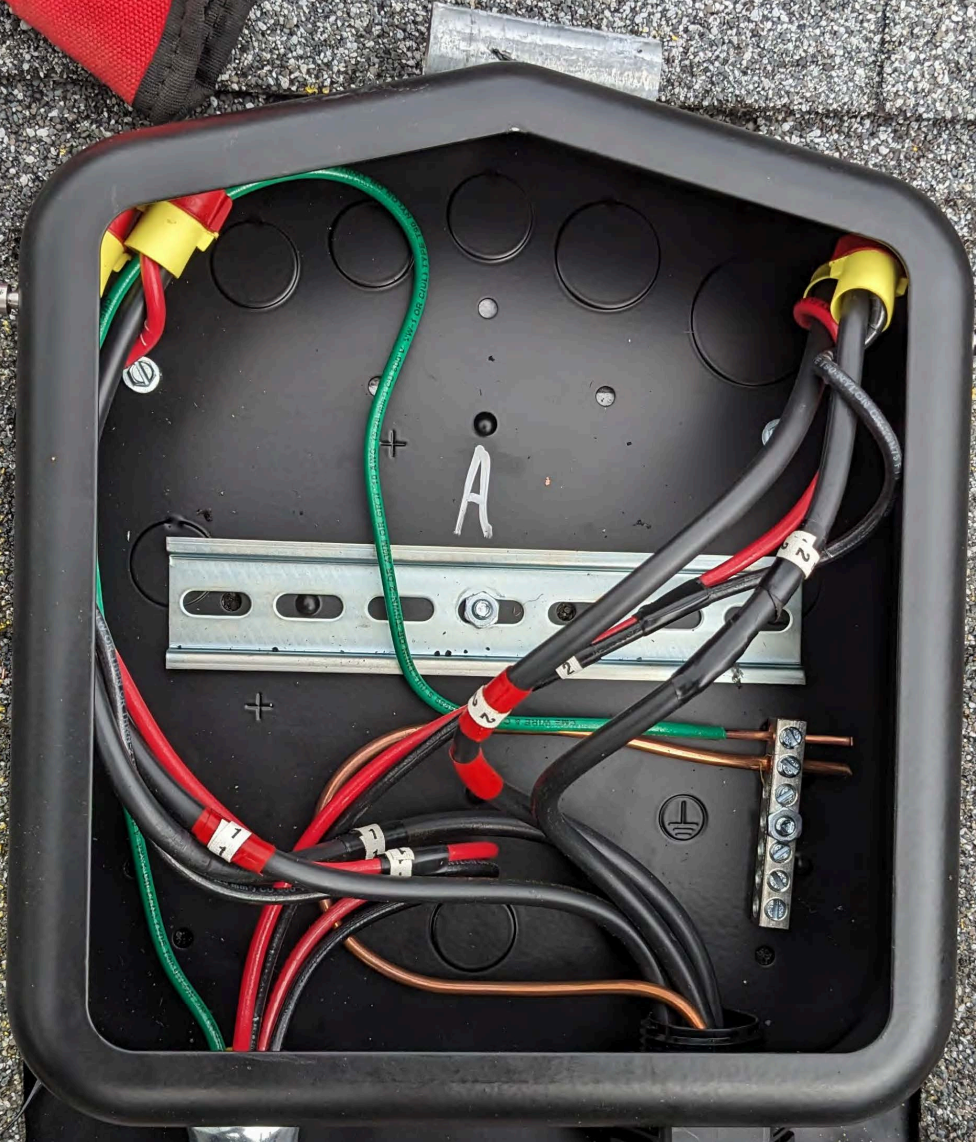


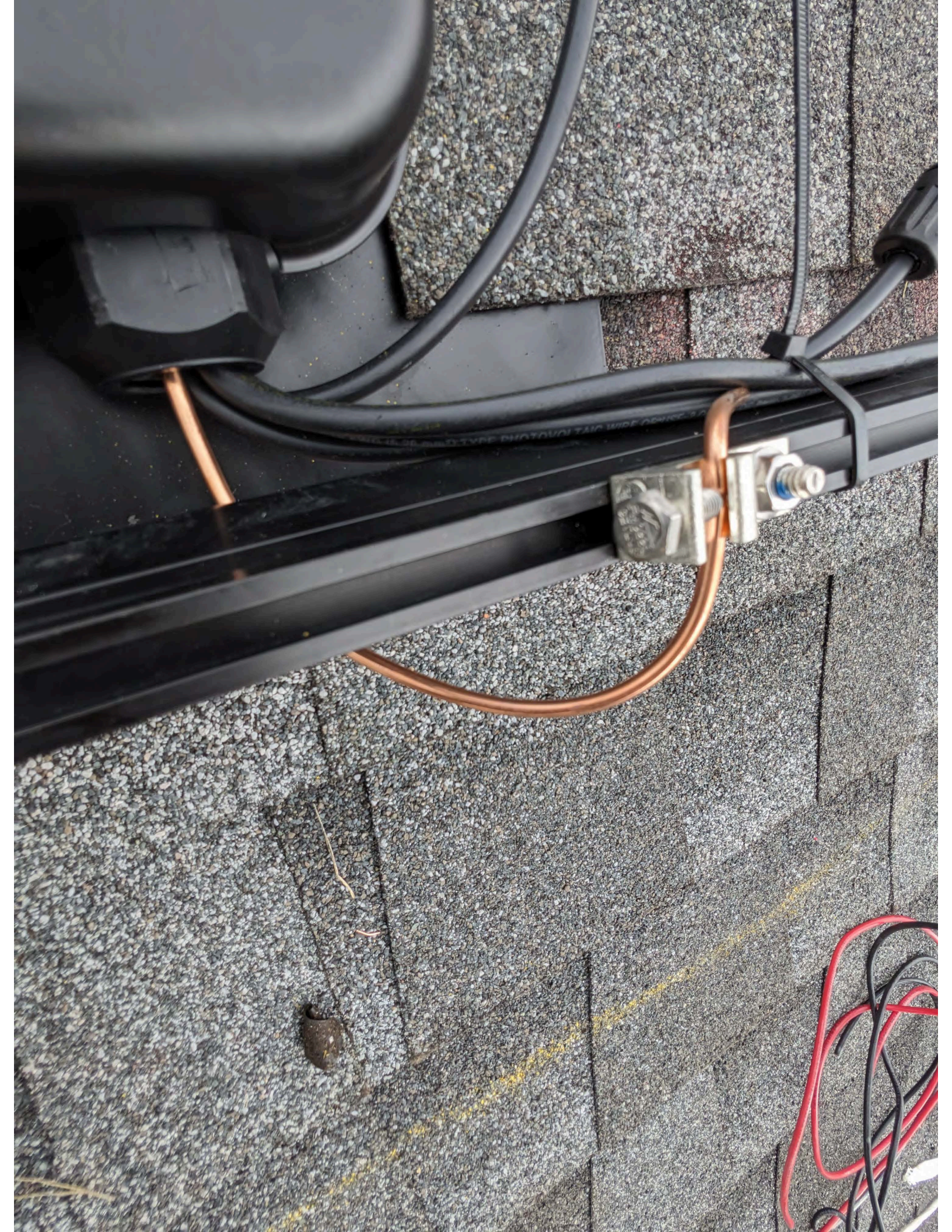
W-1 OR C

2

OR H

1000 1000 1000 1000 1000 1000





SOLADECK

Photovoltaic Combiner/Enclosure Conforms to UL 1741, Certified to CSA C22.2 No. 290, Nema Type 3R
01 02 03 04 21 22 23 24
0799 Series 0766-41AD

Max Ratings: 600 VDC/15 AMP/240 VAC/40 AMP/5 Short-circuit 10KA Ambient Temp 75 °C
Refer to the instruction manual for terminal torque information.

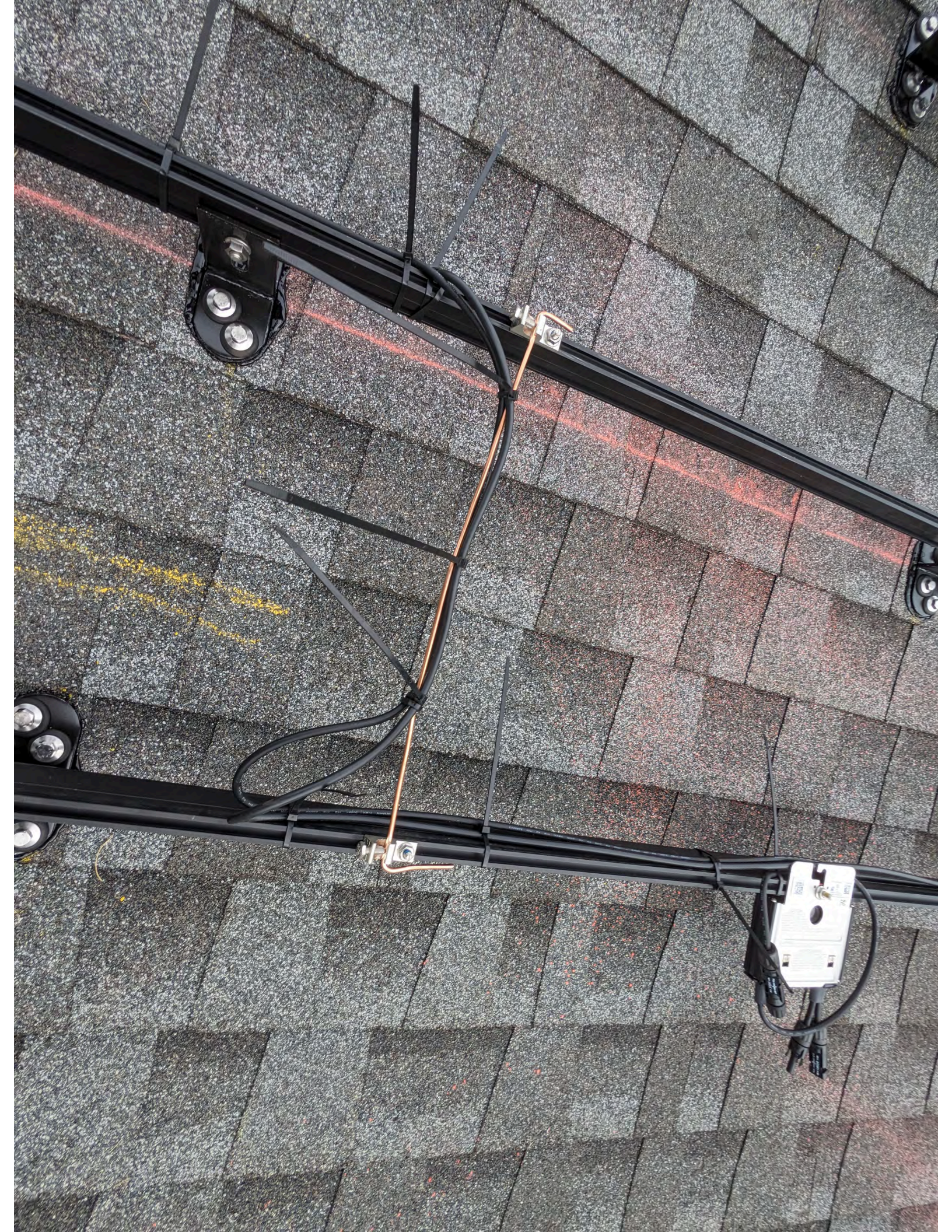
WARNING	AVERTISSEMENT
 <p>BEFORE WORKING ON THIS EQUIPMENT, DISCONNECT ALL POWER SOURCES AND LOCK/OUT THE MAIN DISCONNECT SWITCH TO PREVENT ACCIDENTAL ENERGIZATION. ALWAYS WEAR APPROPRIATE SAFETY EQUIPMENT. CONTACT THE MANUFACTURER FOR THE LATEST REVISIONS TO THIS MANUAL.</p> <p>CAUTION: NEVER WORK ON LIVE CIRCUITS. ALWAYS WEAR APPROPRIATE SAFETY EQUIPMENT. CONTACT THE MANUFACTURER FOR THE LATEST REVISIONS TO THIS MANUAL.</p>	<p>AVANT DE TRAVAILLER SUR CE MATÉRIEL, DÉCONNECTEZ TOUTES LES SOURCES D'ÉNERGIE ET BLOQUEZ/ÉTEINDEZ LE DISPOSITIF DE DÉMARRAGE PRINCIPAL POUR ÉVITER LA MISE EN ÉNERGIE ACCIDENTELLE. TOUJOURS PORTER L'ÉQUIPEMENT DE SÉCURITÉ APPROPRIÉ. CONTACTEZ LE FABRICANT POUR LES DERNIÈRES RÉVISIONS DE CE MANUEL.</p> <p>ATTENTION: NE TRAVAILLEZ JAMAIS SUR DES CIRCUITS EN TENSION. TOUJOURS PORTER L'ÉQUIPEMENT DE SÉCURITÉ APPROPRIÉ. CONTACTEZ LE FABRICANT POUR LES DERNIÈRES RÉVISIONS DE CE MANUEL.</p>

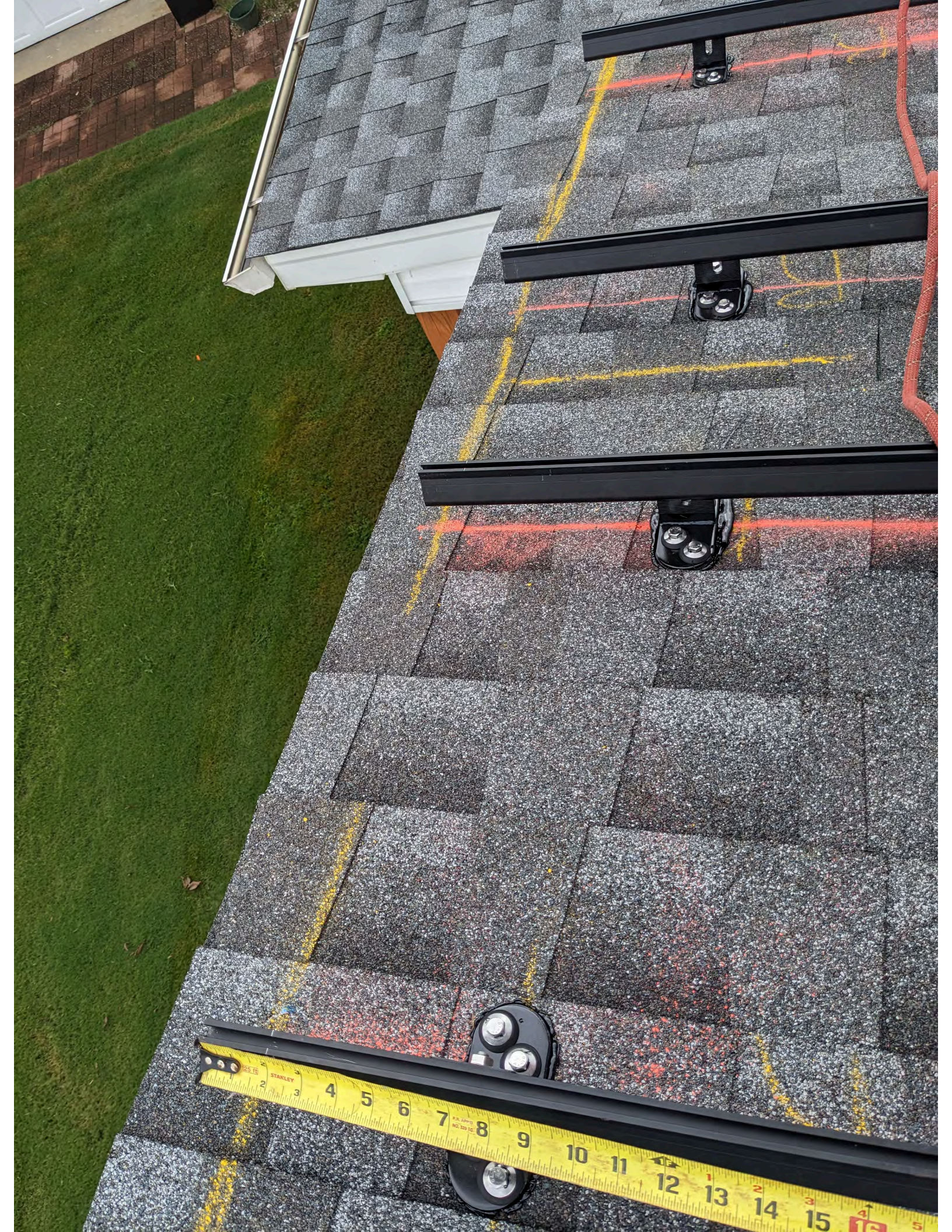
WARNING: PHOTOVOLTAIC POWER SOURCE

WARNING
PC













CAUTION

HOT SURFACES TO REDUCE THE RISK OF BURNS DO NOT TOUCH PHOTOVOLTAIC ARRAY IS EXPOSED TO LIGHT IT SUPPLIES DC VOLTAGE TO EQUIPMENT COVER PV MODULE WITH OPaque MAT PRIOR BEFORE CONNECTING DURING FAULT ZERO CURRENT IS SOURCED INTO DC ARRAY BY CONVERTER

WARNING

ELECTRIC SHOCK HAZARD. THE DC CONDUCTORS OF THIS PHOTOVOLTAIC SYSTEM ARE UNGROUNDED AND MAY BE ENERGIZED.

AVERTISSEMENT

RISQUE DE CHOC ELECTRIQUE QUAND LE CHAMP PHOTOVOLTAIQUE EST EXPOSE A LA LUMIERE. UNE TENSION CC EST FOURNIE A CET EQUIPEMENT. NE SURFACES CHAUDES. NE PAS TOUCHER L'EQUIPEMENT DE REDUIRE LES RISQUES DE BRULURES. LE COURANT DE REFAILLANCE PAR LE CONVERTISSEUR EN CAS DE DEFAILLANCE DANS LE MODULE PV EST TOUJOURS NUL

Do Not Remove
Unauthorized Removal May Void
Warranty
177084F0-8E



Honglin
VW-1
-400c
5mm
Res

WARNING: PHOTOVOLTAIC
POWER SOURCE









WARNING: PHOTOVOLTAIC
POWER SOURCE

100' 5/8" 303
KNOX
100' 5/8" 303
100' 5/8" 303



