











1806080234 488 877 154  
134531 0200192 0200168  
192LD02 015 11 16 ACE

16  
2x4  
EFT

OSB SIDES













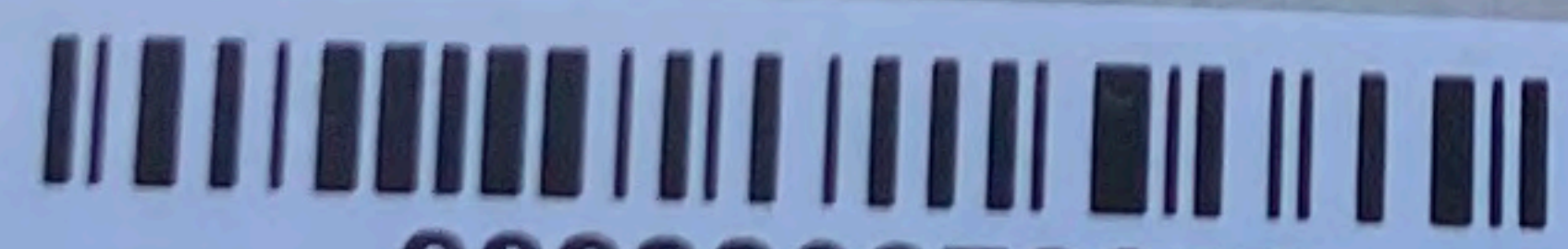












202326070279



883-01121 04

202326070279

IQ7PLUS-72-M-US

9215-711  
WHITE CAROLINA





30mm

30mm

















130

JETTA



First in Flight SEP 23  
KCC-9726  
NORTH CAROLINA

Mastro  
SUBARU  
SUPERSTORE



REC N-Peak 3 Black Series  
 REC400NP3 Black  
 REC  
 Serial Number: FBB-2010044340  
 Phone: +65 6495 9228  
 www.recgroup.com

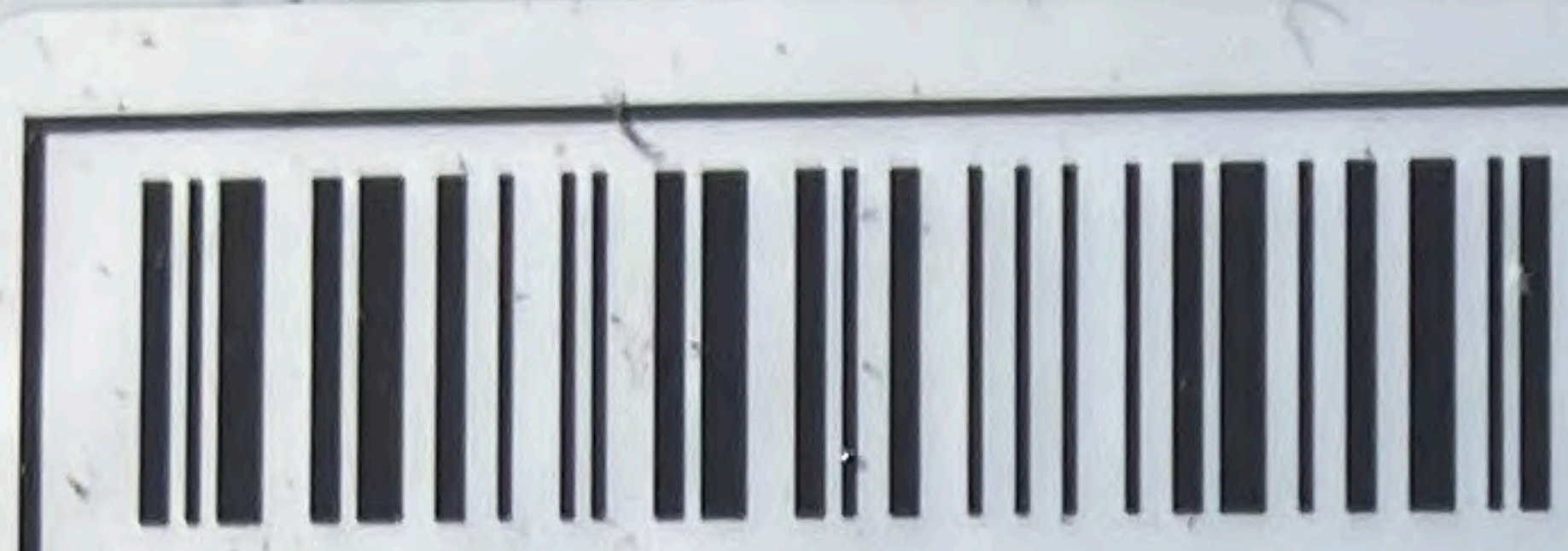
Power Output (Pmax) 400 W  
 Watt Class Sorting 0/+10 W  
 Power Production Tolerance +/- 3%  
 Rated Voltage (Vmpp) 37.6 V  
 Rated Current (Impp) 10.64 A  
 Open Circuit Voltage (Voc) (+/- 3%) 45.0 V  
 Short Circuit Current (Isc) (+/- 3%) 11.39 A  
 Maximum System Voltage (Vsys) 1000 V  
 Maximum Series Fuse (DC) (UL) 25 A  
 Maximum Series Fuse (DC) (IEC) 25 A  
 Design Load +4666 / -2666 Pa\*  
 Maximum Test Load +7000 / -4000 Pa\*  
 (Values at STC: 1000 W/m<sup>2</sup> AM 1.5, cell temp 25°C)

See installation manual for \*) mechanical installation requirements and  
 (+) installation requirements to achieve a specified system fire class  
 Manufactured: 26.03.2023

Power Output (Pmax) 400 W  
 Watt Class Sorting 0/+10 W  
 Power Production Tolerance +/- 3%  
 Rated Voltage (Vmpp) 37.6 V  
 Rated Current (Impp) 10.64 A  
 Open Circuit Voltage (Voc) (+/- 3%) 45.0 V  
 Short Circuit Current (Isc) (+/- 3%) 11.39 A  
 Maximum System Voltage (Vsys) 1000 V  
 Maximum Series Fuse (DC) (UL) 25 A  
 Maximum Series Fuse (DC) (IEC) 25 A  
 Design Load +4666 / -2666 Pa\*  
 Maximum Test Load +7000 / -4000 Pa\*  
 (Values at STC: 1000 W/m<sup>2</sup> AM 1.5, cell temp 25°C)

Warning electrical hazard. This module produces electricity when exposed to light.  
 CAUTION: DO NOT DISCONNECT UNDER LOAD  
 Avertissement: Risque de choc électrique. Ce module solaire produit de l'électricité lorsqu'il est exposé à la lumière.  
 ATTENTION: NE PAS DECONNECTER SOUS TENSION  
 For field connections, use min. 4 mm<sup>2</sup>(12 AWG) UL PV wires insulated for a min. of 90° C  
 Made in Singapore by REC SOLAR PTE. LTD.  
 20 TUAS SOUTH AVENUE 14, SINGAPORE 637312, SINGAPORE  
 EU/Europe Contact: REC Solar EMEA GmbH  
 Balanstr. 71a, 81541 Munich, Germany, Tel: +49 (0)89-442-38590  
 For other regions see: www.recgroup.com/contact

Warning electrical hazard. This module produces electricity when exposed to light.  
 CAUTION: DO NOT DISCONNECT UNDER LOAD  
 Avertissement: Risque de choc électrique. Ce module solaire produit de l'électricité lorsqu'il est exposé à la lumière.  
 ATTENTION: NE PAS DECONNECTER SOUS TENSION  
 For field connections, use min. 4 mm<sup>2</sup>(12 AWG) UL PV wires insulated for a min. of 90° C  
 Made in Singapore by REC SOLAR PTE. LTD.  
 20 TUAS SOUTH AVENUE 14, SINGAPORE 637312, SINGAPORE  
 EU/Europe Contact: REC Solar EMEA GmbH  
 Balanstr. 71a, 81541 Munich, Germany, Tel: +49 (0)89-442-38590  
 For other regions see: www.recgroup.com/contact















Red markings on the asphalt pavement, possibly a 'T' or similar symbol.

MFR-61

208



[Blurred white label]

IC7PLUS-72-M-US 202326068459















984-B (UL) Type DG 600V THHN/THWN-2 90C dry / wet 2/C 12AWG -40C oil res | sunlight resistant FT4 5ms2n RoHS

























