





E2071

07E699E2

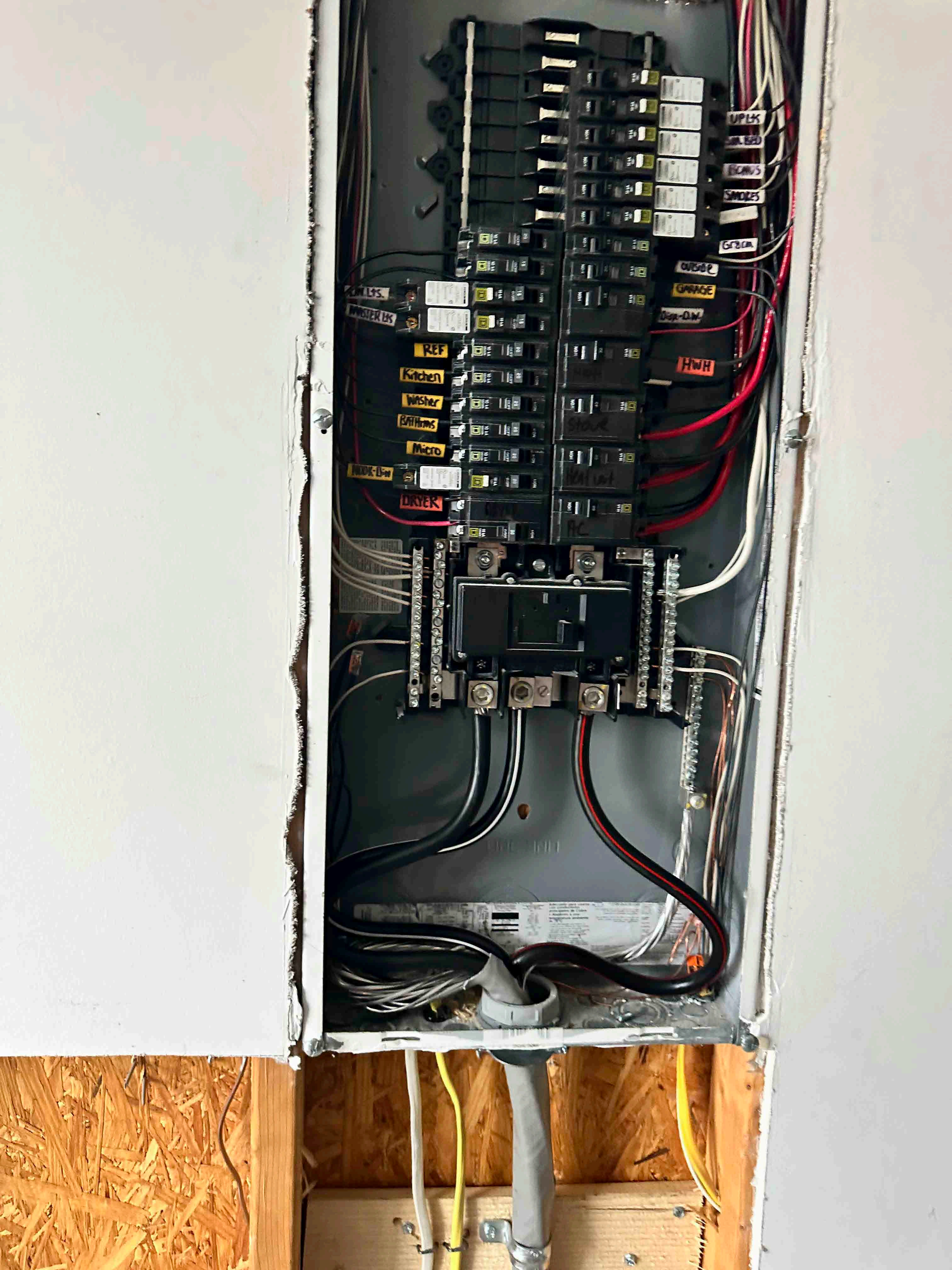
PREMIUM
GDS

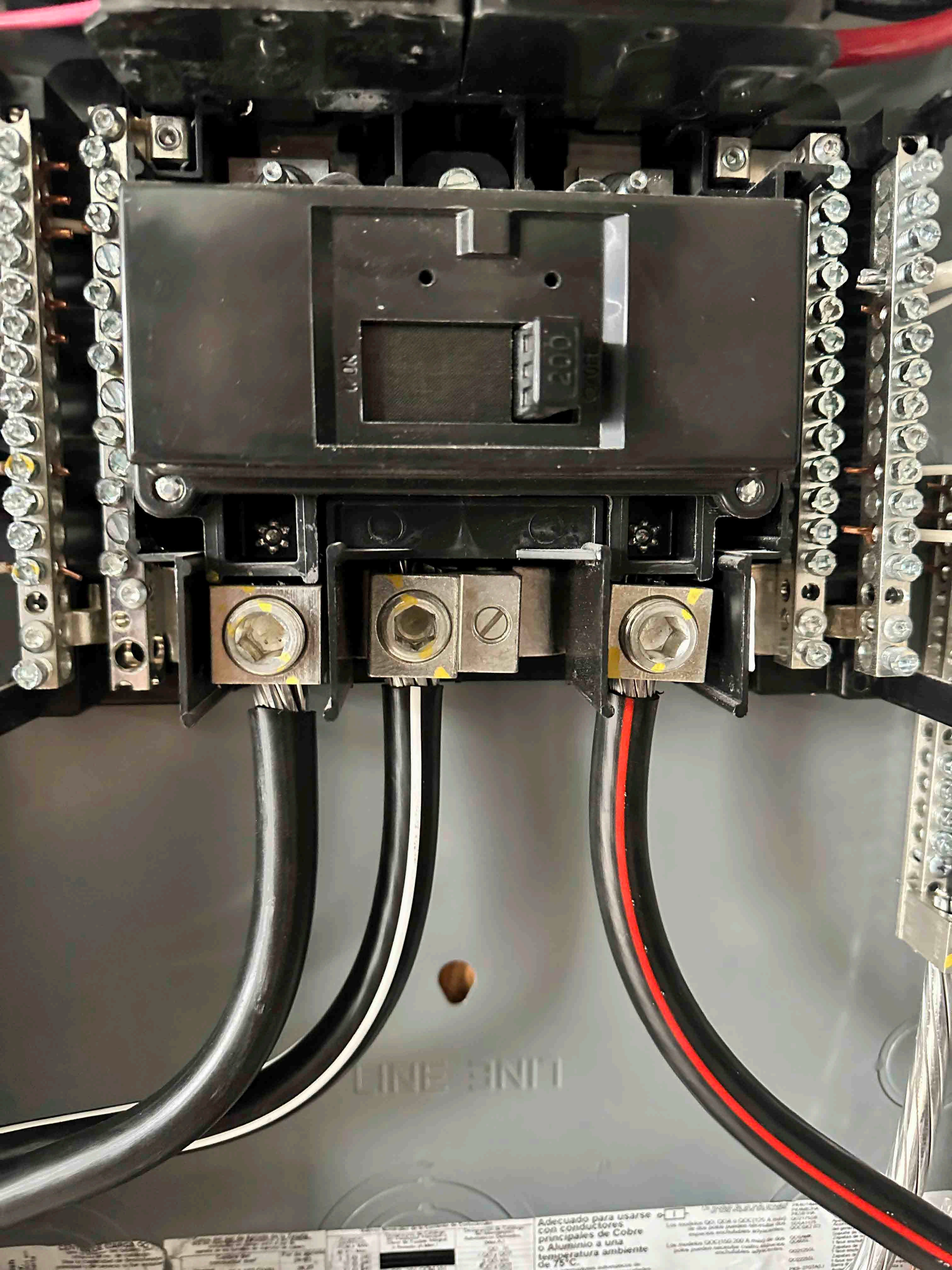
SPF
1
R14







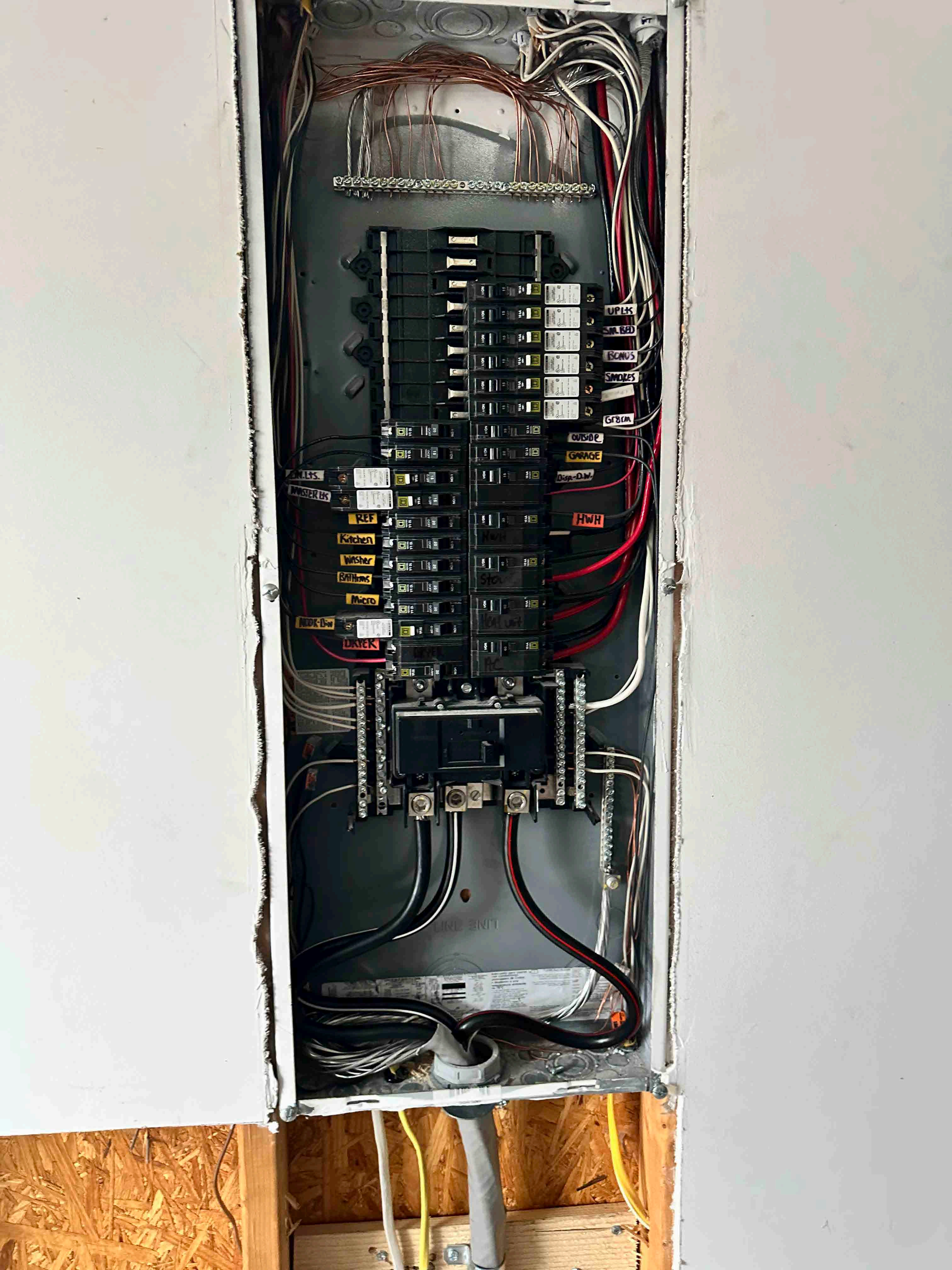


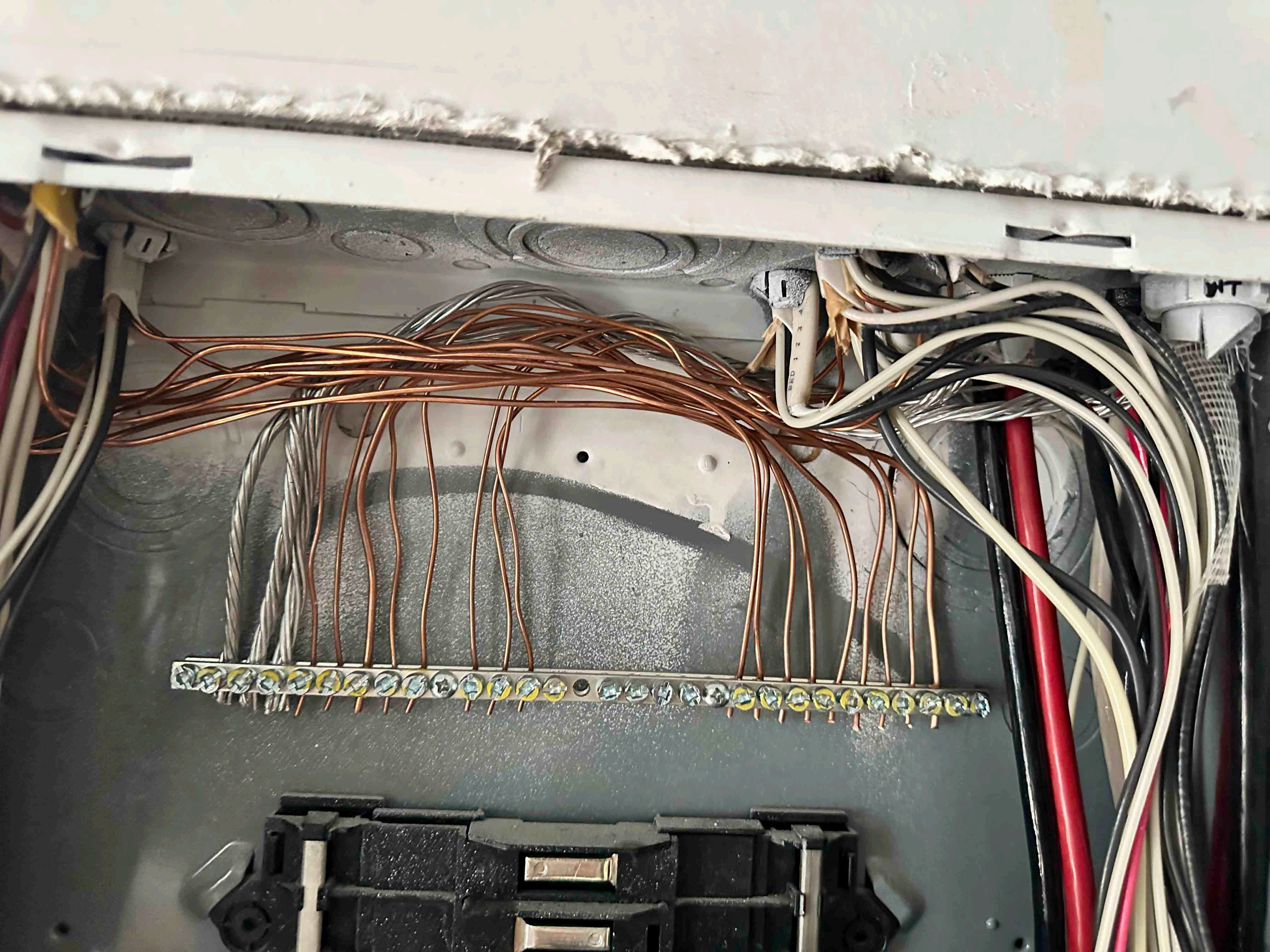


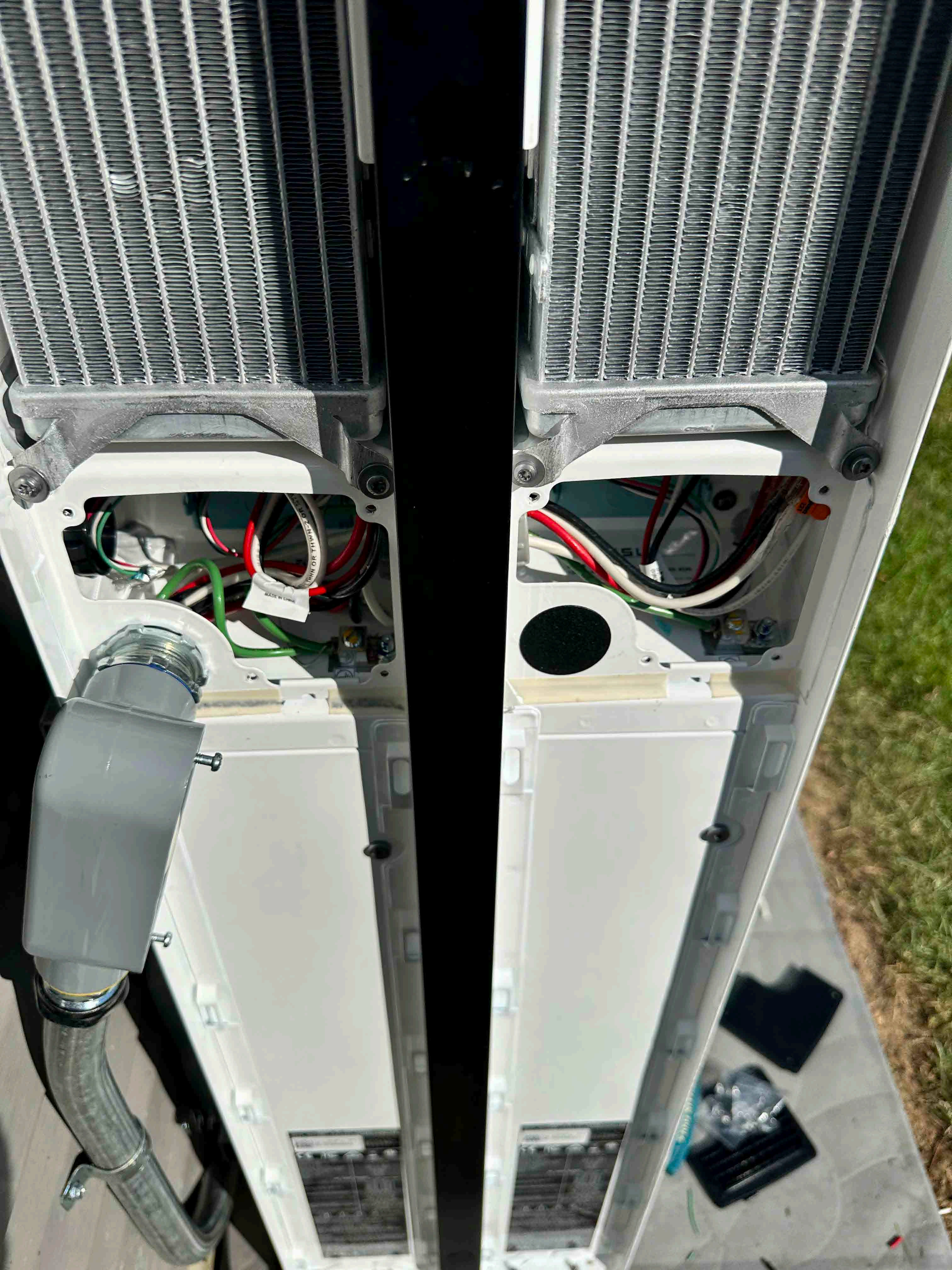
LINE 3111

Adecuado para usarse con conductores principales de Cobre o Aluminio a una temperatura ambiente de 75°C.

Los modelos G0, G0A y G0C105 A solo se usan para...
Los modelos G0C150-200 A más de dos...
para...
G0C105A
G0C150A
G0C200A



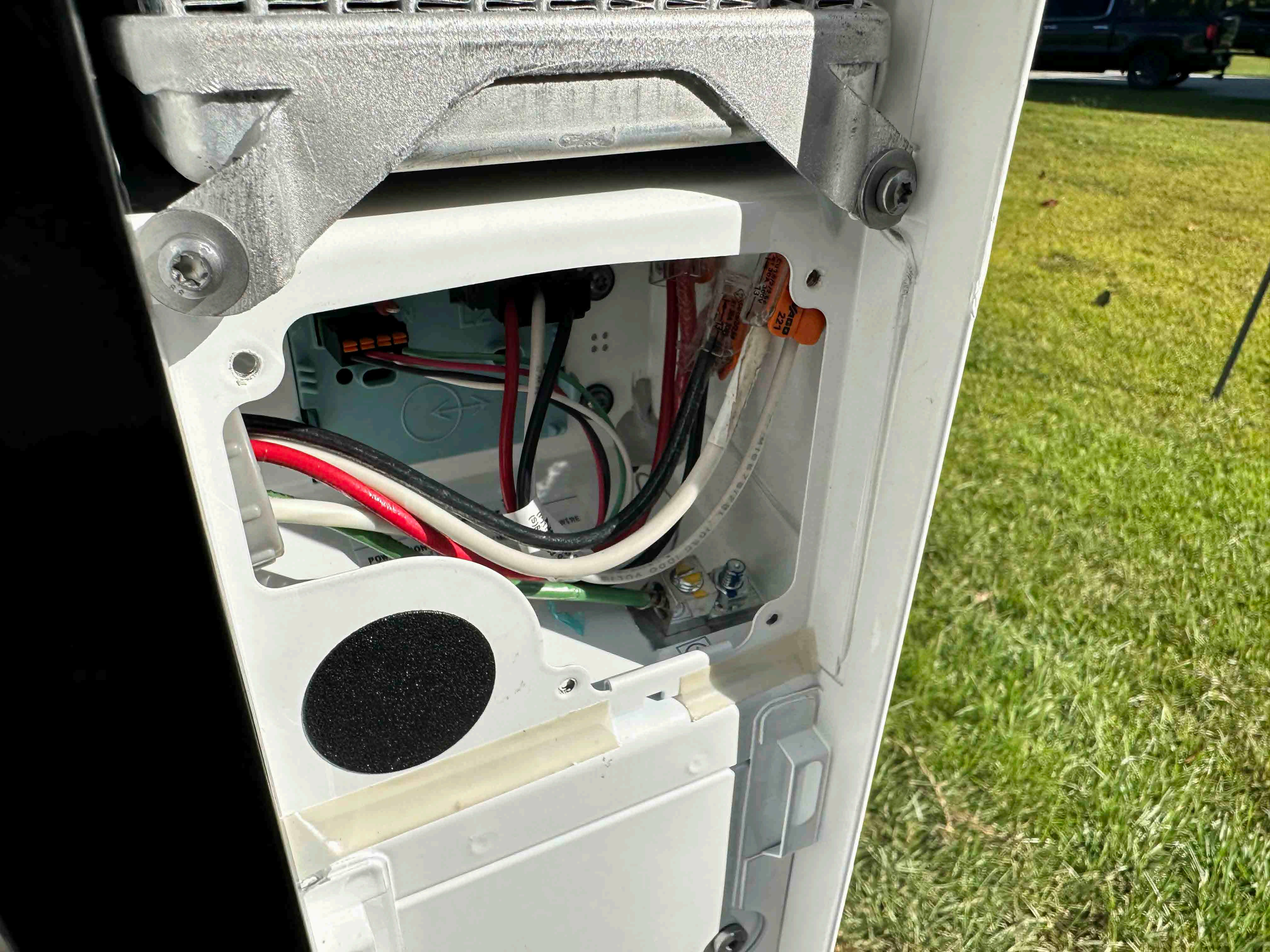






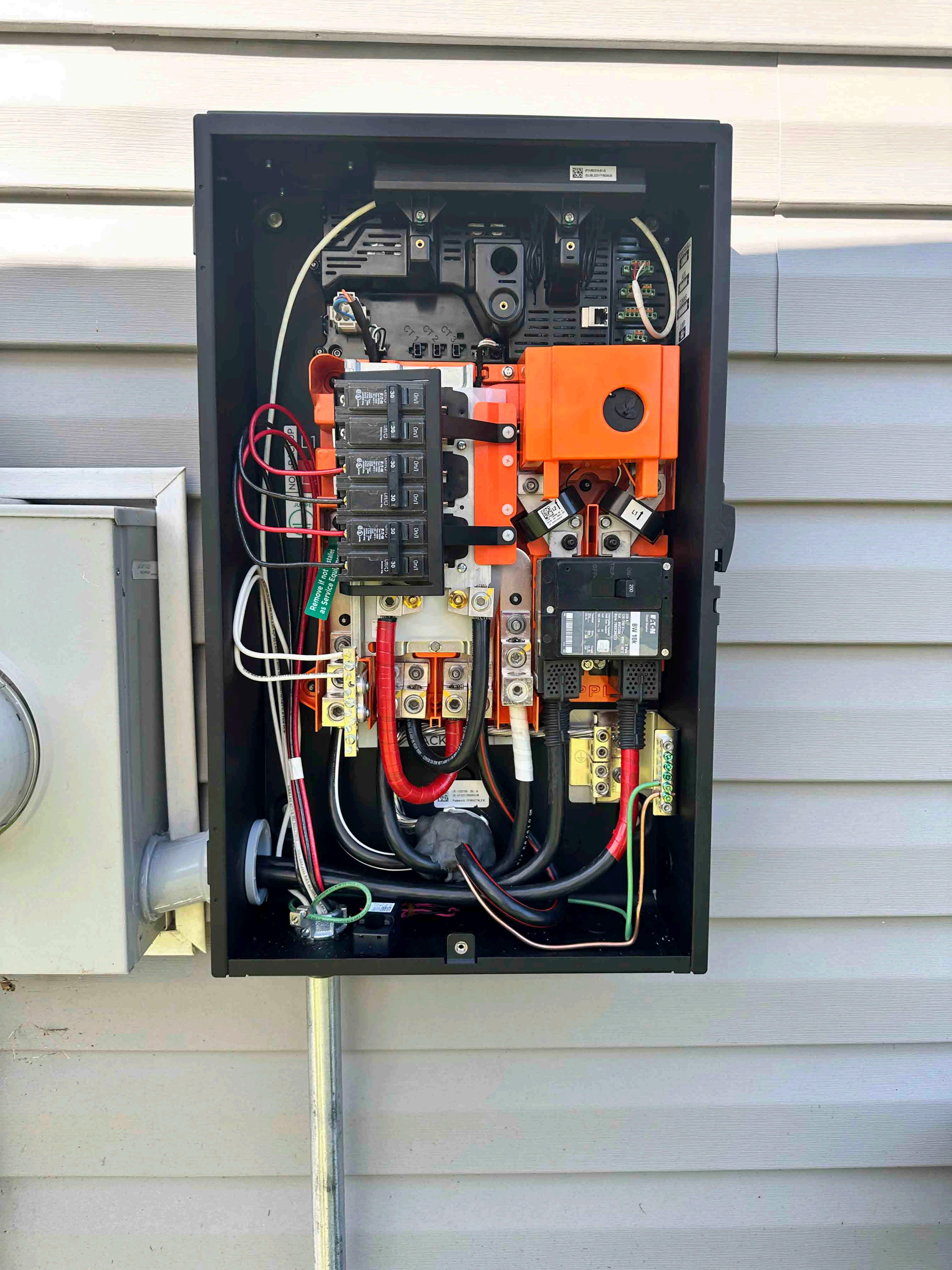
MADE IN CHINA

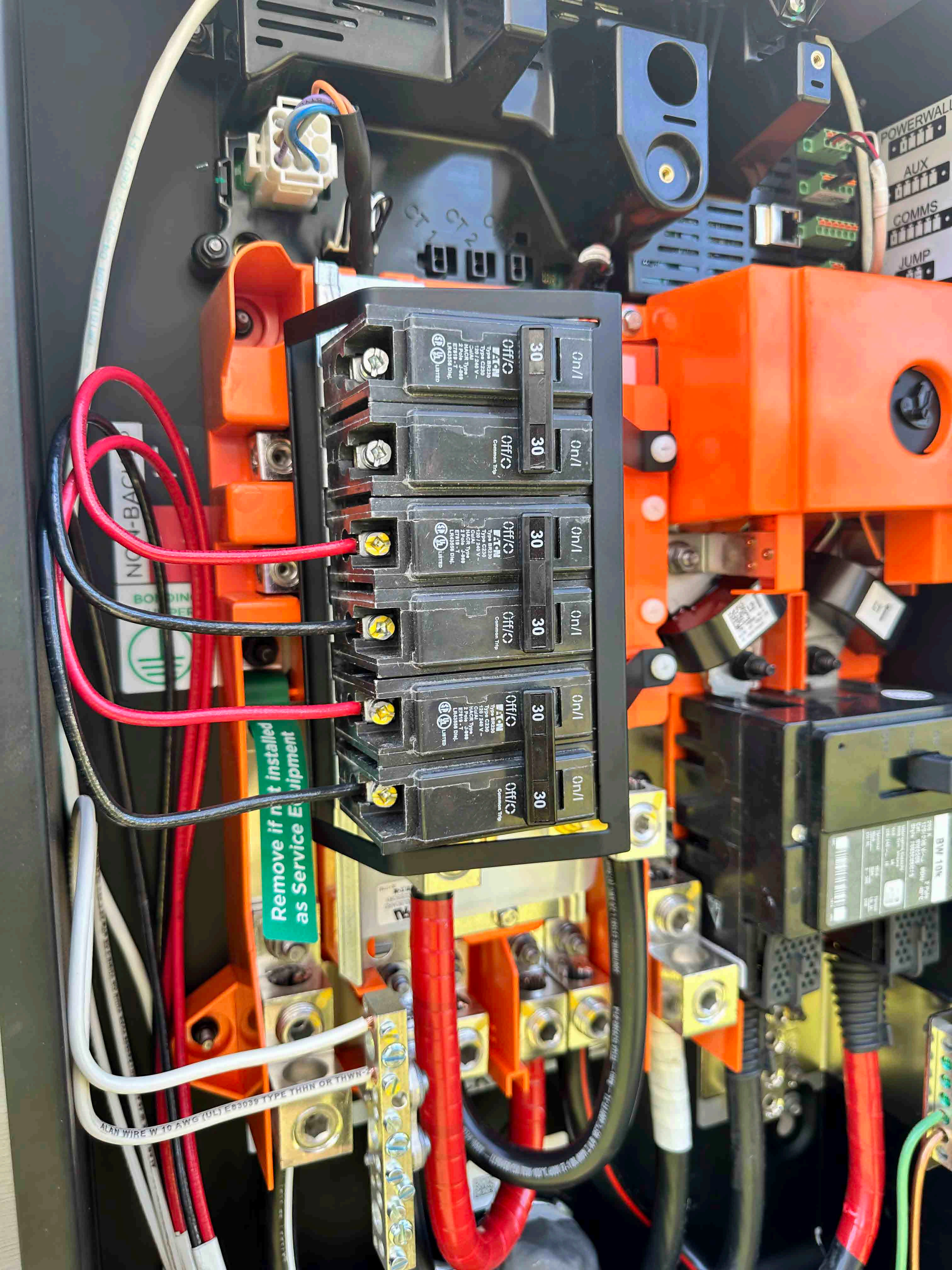
TURN OR THROTTLE OR FLOW











POWERWALL
AUX
COMMS
JUMP

STOP

NON-BACK
BONDING
PREF

Remove if not installed
as Service Equipment

ALAN WIRE W 10 AWG (UL) E63099 TYPE THHN OR THWN

30	On/I	OFF/O	Eaton Type BR220 120/240 V 30A MAGC Type E7908 - T-488 Listed
30	On/I	OFF/O	Common Trip
30	On/I	OFF/O	Eaton Type BR220 120/240 V 30A MAGC Type E7908 - T-488 Listed
30	On/I	OFF/O	Common Trip
30	On/I	OFF/O	Eaton Type BR220 120/240 V 30A MAGC Type E7908 - T-488 Listed
30	On/I	OFF/O	Common Trip

30	On/I	OFF/O	Eaton Type BR220 120/240 V 30A MAGC Type E7908 - T-488 Listed
30	On/I	OFF/O	Common Trip

30	On/I	OFF/O	Eaton Type BR220 120/240 V 30A MAGC Type E7908 - T-488 Listed
30	On/I	OFF/O	Common Trip

EATON
Circuit Breaker

BW 10K

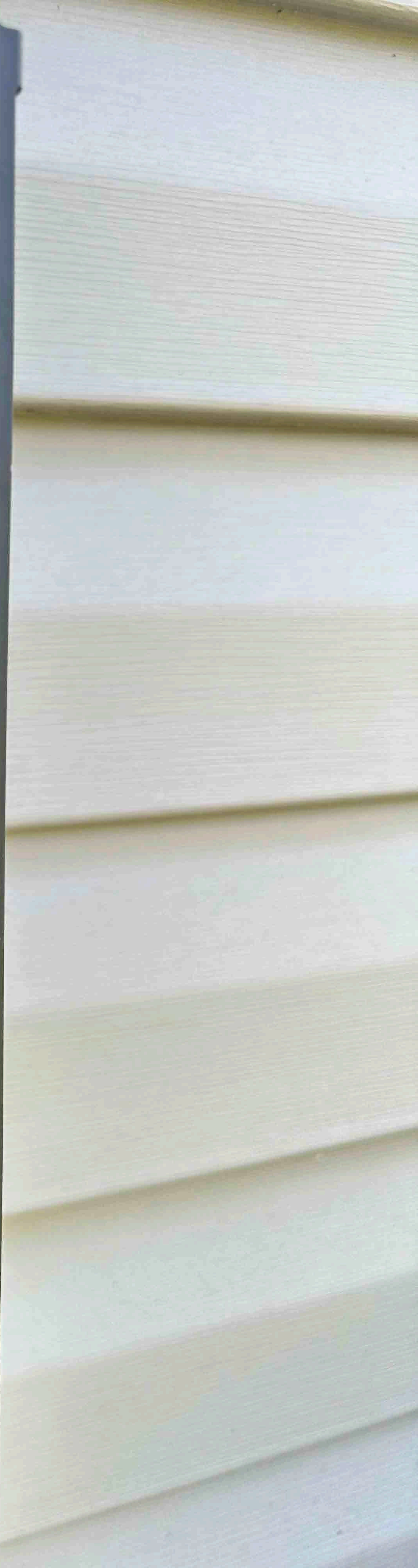
200 A
120/240 V ~ 60Hz
2 Pole
Cal. BW2200
Style 7803C08G73

Interrupting Capacity
RMS Sym. Ampere
120/240 ~ 10 kA

Terminal	Wire Size	Torque Lb. In.
Cu/Al	2-300	250

4114 H05

PPPL



N

CKU

13-4204-13338 600V OR 40149 1000V — 1150458 CSA TEN 105°C 600V FT-1 OR 40149 1000V

1232100-00-H
GF2231250002JM
Password: FFMKGTNLXW



13-4204-13338 600V OR 40149 1000V



Think Side
Towards
Source
100A CT
MFR: 142716-20-8 01
MFR: ANIC-100LS-1
S/N: ADV-29017-00118



APPENDIX - E - 1 - ENERGY EFFICIENCY CERTIFICATE
N1101.9 OR NCECC 401.3

Builder, Permit Holder, Registered Design Professional, BPI Professional, or HERS Rater
 Print Name: Ben Street Construction
 Signature: [Signature]
 Property Address: 130 Old Field Loop, Rte. 1, Sanford
 Date: 11-23-18

Insulation Rating - List the value covering largest area to all that apply

Component	R-Value
Ceiling/roof	R-38
Wall	R-15
Floor	R-19
Closed Crawl Space Wall	R-19
Closed Crawl Space Floor	R-19
Slab	R-10
Basement Wall	R-19
<input checked="" type="checkbox"/> Visually inspected of tub, shower, fireplace units, and stairs N1102.2.12 or NCECC 402.2.12	R-15

fenestration

U-Factor	Solar Heat Gain Coefficient (SHGC)
3.5	0.6

Electrical Power and Lighting Systems:

Visually inspected according to N1104 or NCECC 404 (Per www.bpi.com/energy.html)

Building Air Leakage

Visually inspected according to N1102.4.2.1 or NCECC 402.4.2.1

Visually inspected according to Table N1102.4.2.2 or Table NCECC 402.4.2.2 on

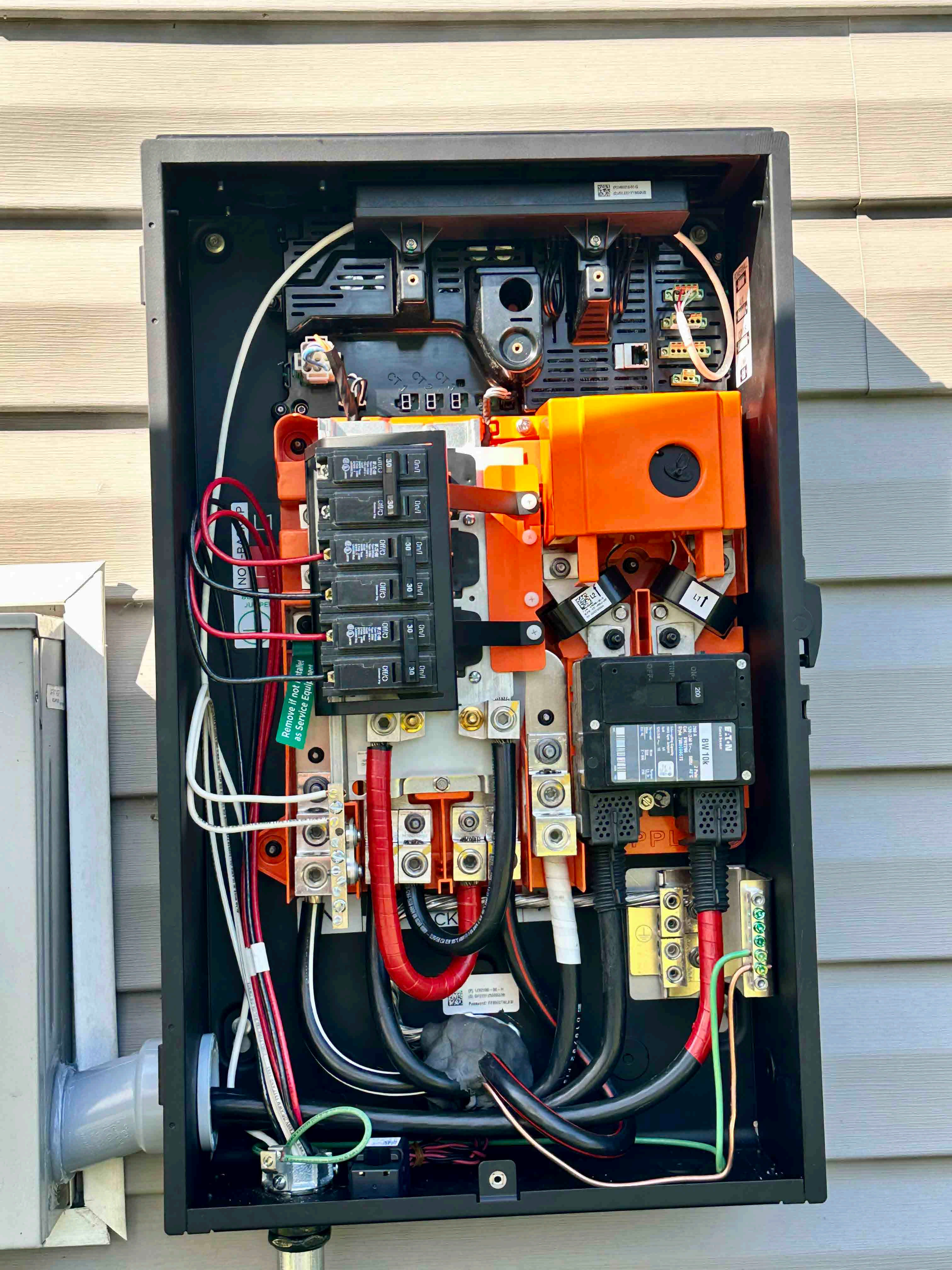
Building Air Leakage Test Results (Section N1102.4.2.2)
 ACH50 (Target: 5.0) or 0.060/0.064 (Target: 0.30)

Name of Tester and Company: ASCR'S Electric
 Date: 11-27-18 Phone: 910-778-6049

Certificate to be displayed PERMANENTLY on the MAIN Cover of the Electrical Service Panel

⚠ WARNING ⚠
THREE POWER SOURCES
 SOURCES: UTILITY GRID, BATTERY
 AND PV SOLAR ELECTRIC SYSTEM





RESET

SOLAR
SOLAR
BATTERY
BATTERY
BATTERY
BATTERY



SERVICE ONLY
MANUAL OVERRIDE NOT TO BE USED
UNLESS DIRECTED BY TESLA SERVICE

SERVICE DISCONNECT

200

BACKUP GATEWAY 2

Complies to: UL STD 87, 916, & 809A

Part No: FFMGTN1K1W
SSID: TEG-2JM
Certified to: CSA STD C22.2 4 205 & 0.19

PROTECTIVE CLASS	CLASS 1
ENCLOSURE TYPE (UL 50)	NEHA TYPE 3R, RAINTIGHT
OPERATING TEMPERATURE RANGE	-4°F TO 122°F
AC INPUT / OUTPUT	
VOLTAGE RANGE (2 B)	110-240VAC
MAX CURRENT	200A
MAX SHORT CIRCUIT CURRENT	10kA ¹
FREQUENCY	60Hz
MAXIMUM POWER	48kW

CAUTION: RISK OF ELECTRIC SHOCK. MULTIPLE VOLTAGE SOURCES TERMINATED WITHIN. REFER SERVICES TO QUALIFIED PERSONNEL. DISCONNECT EACH CIRCUIT BEFORE SERVICING.
COMPARTMENT FOR SUPPLY AUTHORITY USE ONLY. WARNING: ISOLATE AT SUPPLY AUTHORITY SOURCE BEFORE ENTERING THIS COMPARTMENT.
RISQUE DE CHOC ELECTRIQUE. PLUSIEURS SOURCES DE TENSION SONT CONNECTEES A L'INTERIEUR DE CET EQUIPEMENT. CHAQUE CIRCUIT DOIT ETRE DISCONNECTE AVANT INTERVENTION. LA MAINTENANCE DOIT ETRE EFFECTUEE PAR DU PERSONNEL QUALIFIE.
COMPARTIMENT RESERVE AU DISTRIBUTEUR D'ELECTRICITE.
AVERTISSEMENT: ISOLER A LA SOURCE D'ALIMENTATION DU DISTRIBUTEUR AVANT D'OUVRIR CE COMPARTIMENT.
THE MAXIMUM OPERATING CURRENT OF THIS SYSTEM MAY BE CONTROLLED ELECTRONICALLY. REFER TO THE MANUFACTURER'S INSTRUCTIONS FOR MORE INFORMATION. MAXIMUM PCS CONTROLLED CURRENT SETTING: 200 AMPS.
SUITABLE FOR USE AS SERVICE EQUIPMENT
CLASS CTL PANEL BOARD

TESLA

WARNING
POWER SOURCE OUTPUT CONNECTION DO NOT RELOCATE THIS OVERCURRENT DEVICE

WARNING
ELECTRIC SHOCK HAZARD
TERMINALS ON THE LINE AND LOAD SIDES MAY BE ENERGIZED IN THE OPEN POSITION

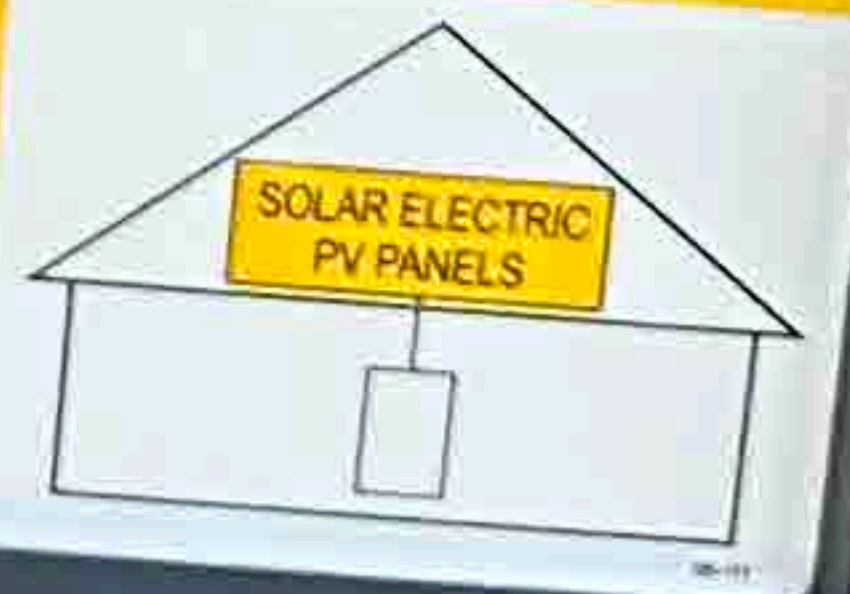
GENERATION PANEL:
IN THE EVENT OF AN EMERGENCY, TURN OFF ALL BREAKERS TO DISCONNECT BACKUP POWER SOURCE(S).

WARNING
THREE POWER SOURCES
SOURCES: UTILITY GRID, BATTERY AND PV SOLAR ELECTRIC SYSTEM

WARNING
THIS EQUIPMENT FED BY MULTIPLE SOURCES. TOTAL RATING OF ALL OVERCURRENT DEVICES, EXCLUDING MAIN SUPPLY OVERCURRENT DEVICE, SHALL NOT EXCEED AMPACITY OF BUSBAR.

SOLAR PV SYSTEM EQUIPPED WITH RAPID SHUTDOWN

TURN RAPID SHUTDOWN SWITCH TO THE "OFF" POSITION TO SHUT DOWN PV SYSTEM AND REDUCE SHOCK HAZARD IN THE ARRAY



⚠ WARNING ⚠

THREE POWER SOURCES

**SOURCES: UTILITY GRID, BATTERY
AND PV SOLAR ELECTRIC SYSTEM**

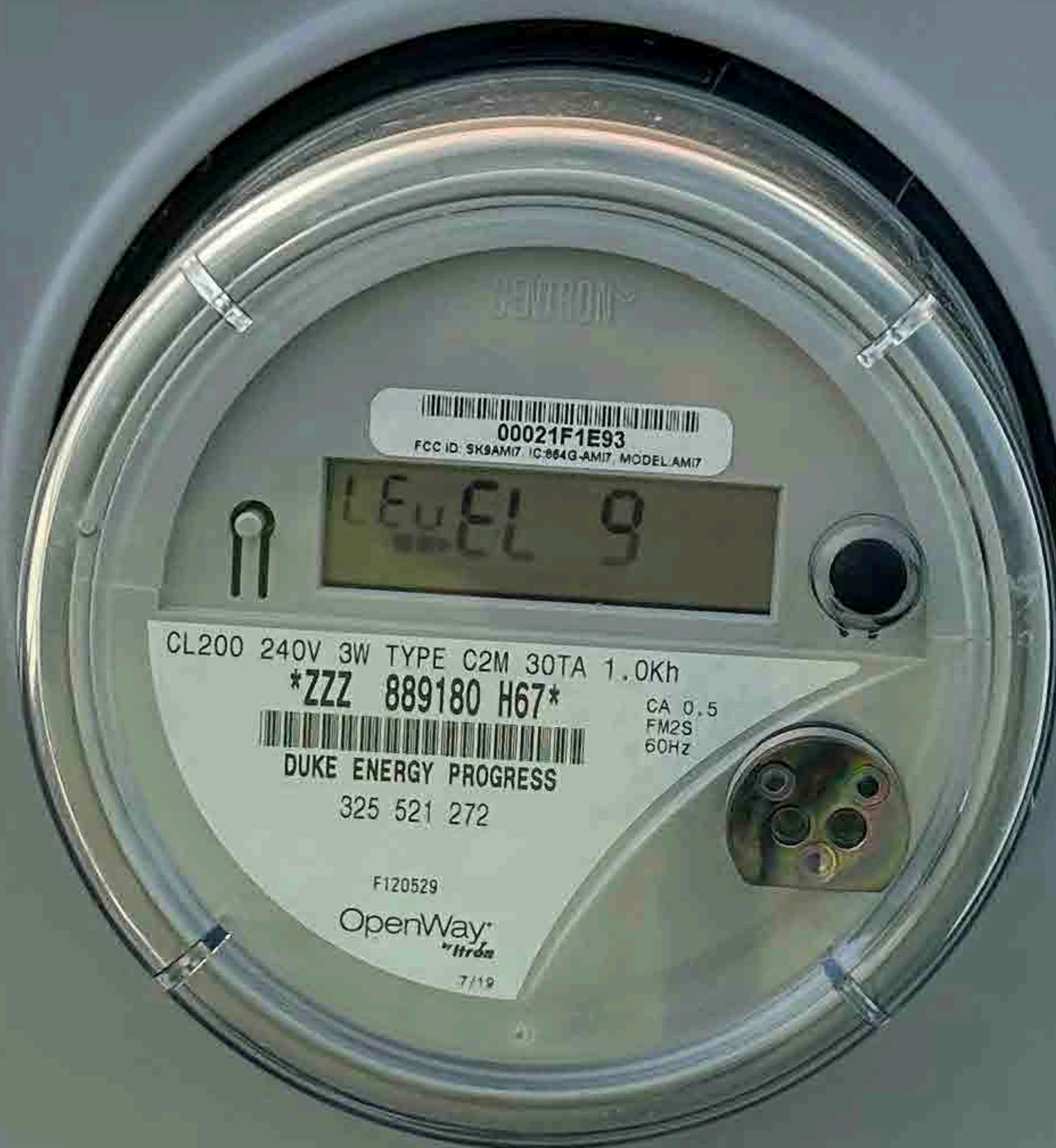
⚠ DANGER

Hazardous Voltage.
Will cause death, serious injury
or substantial property damage.
Turn off power supplying this
equipment before working inside.



⚠ PELIGRO

Voltaje peligroso. Causará la
muerte, lesiones graves o daño
substantial a la propiedad.
Desconecte el suministro de energía a este
equipo antes de trabajar en su interior.



00021F1E93
FCC ID: 5K3AM7 IC: 884G-AM7 MODEL: AM7

CL200 240V 3W TYPE C2M 30TA 1.0Kh

ZZZ 889180 H67

DUKE ENERGY PROGRESS
325 521 272

CA 3.5
FM2S
60HZ

F120529

OpenWay
Verde
7/19

40 NEMF IC-2 MAX 30C UIRE 5361 SE 12

