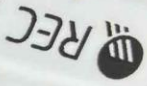


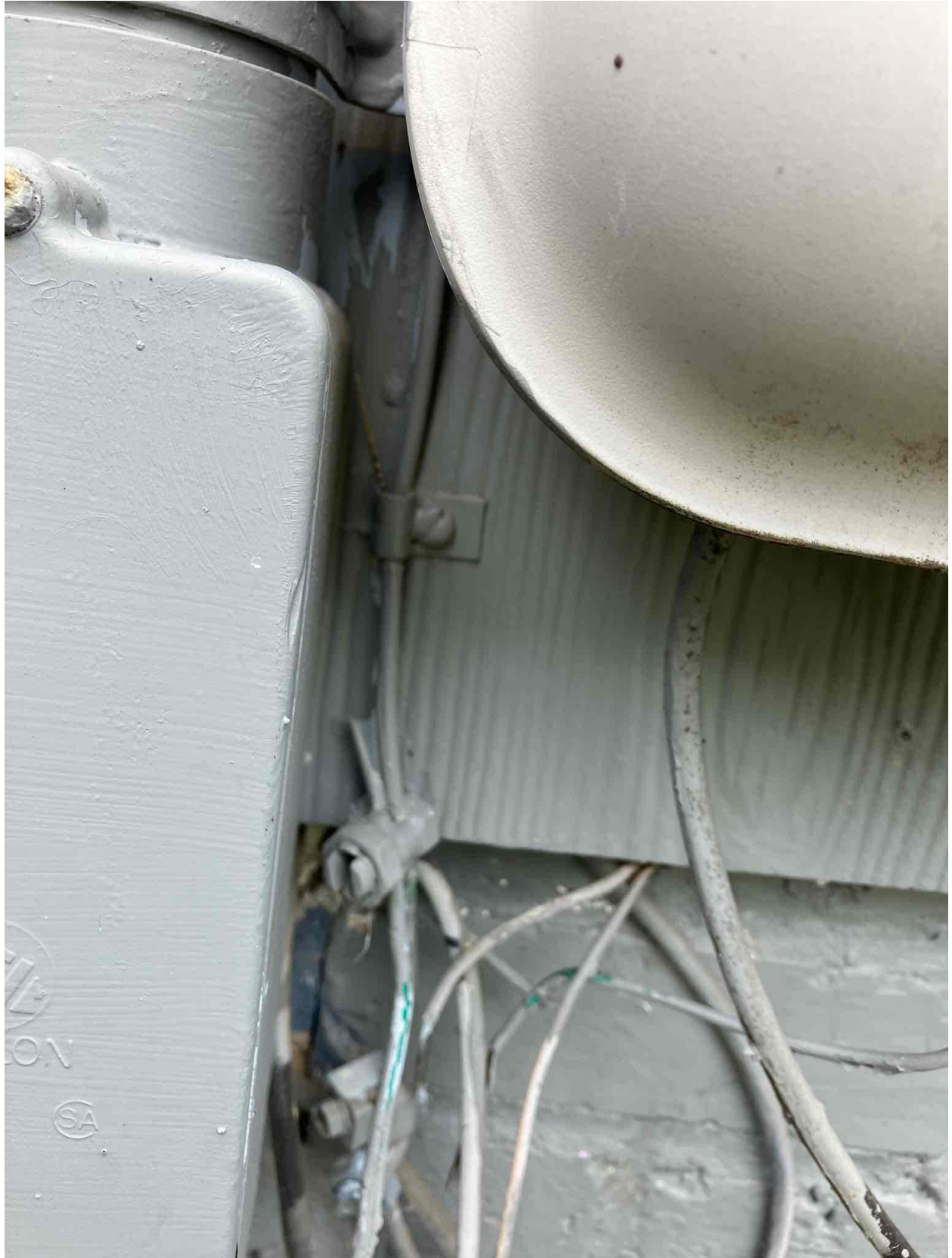


REC410AA Pure-R
Pmax: 410 W
Imp: 8.30 A
Vmpp: 49.4 V

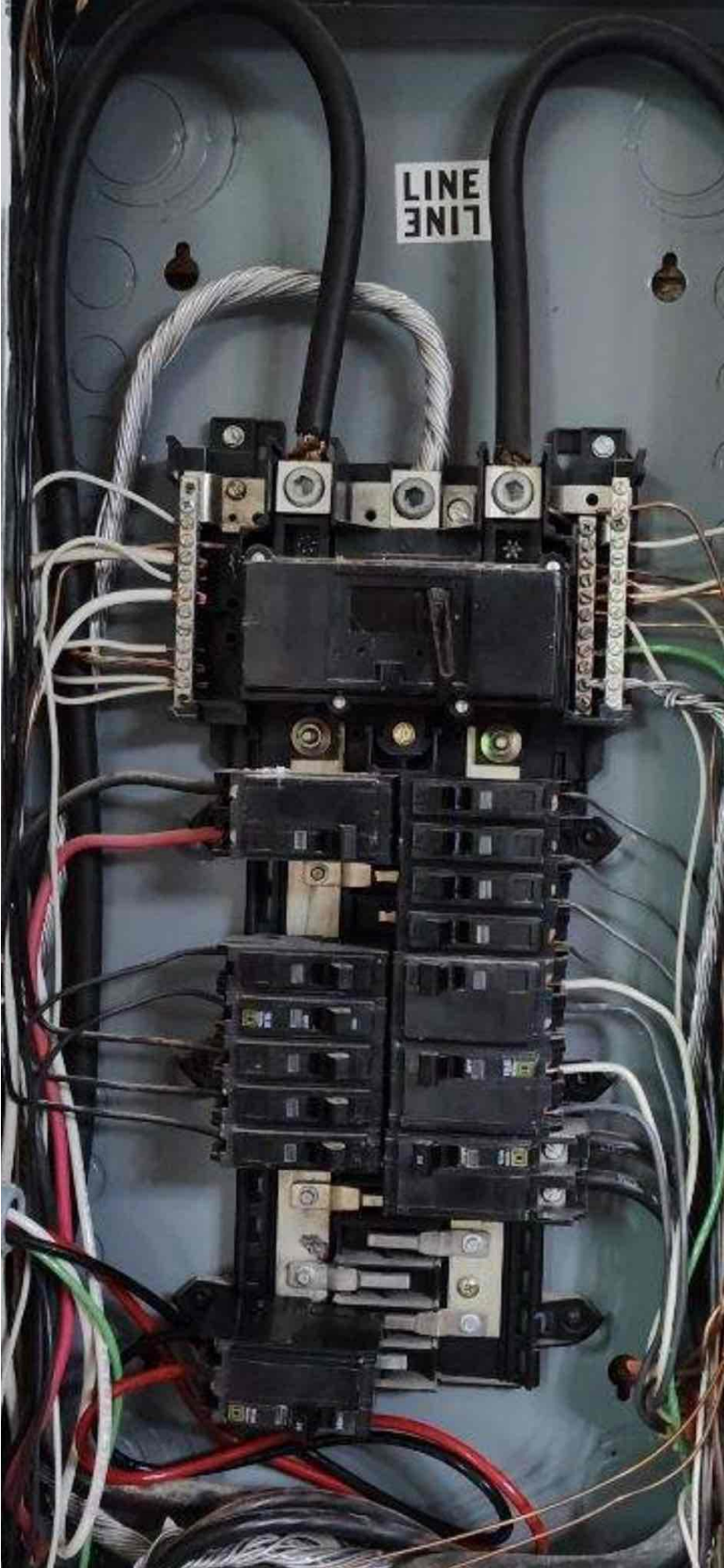


FB-7005210427









25-23

SOLAR PV BREAKER
BREAKER IS BACKFED
DO NOT RELOCATE

FCDLABELS.COM

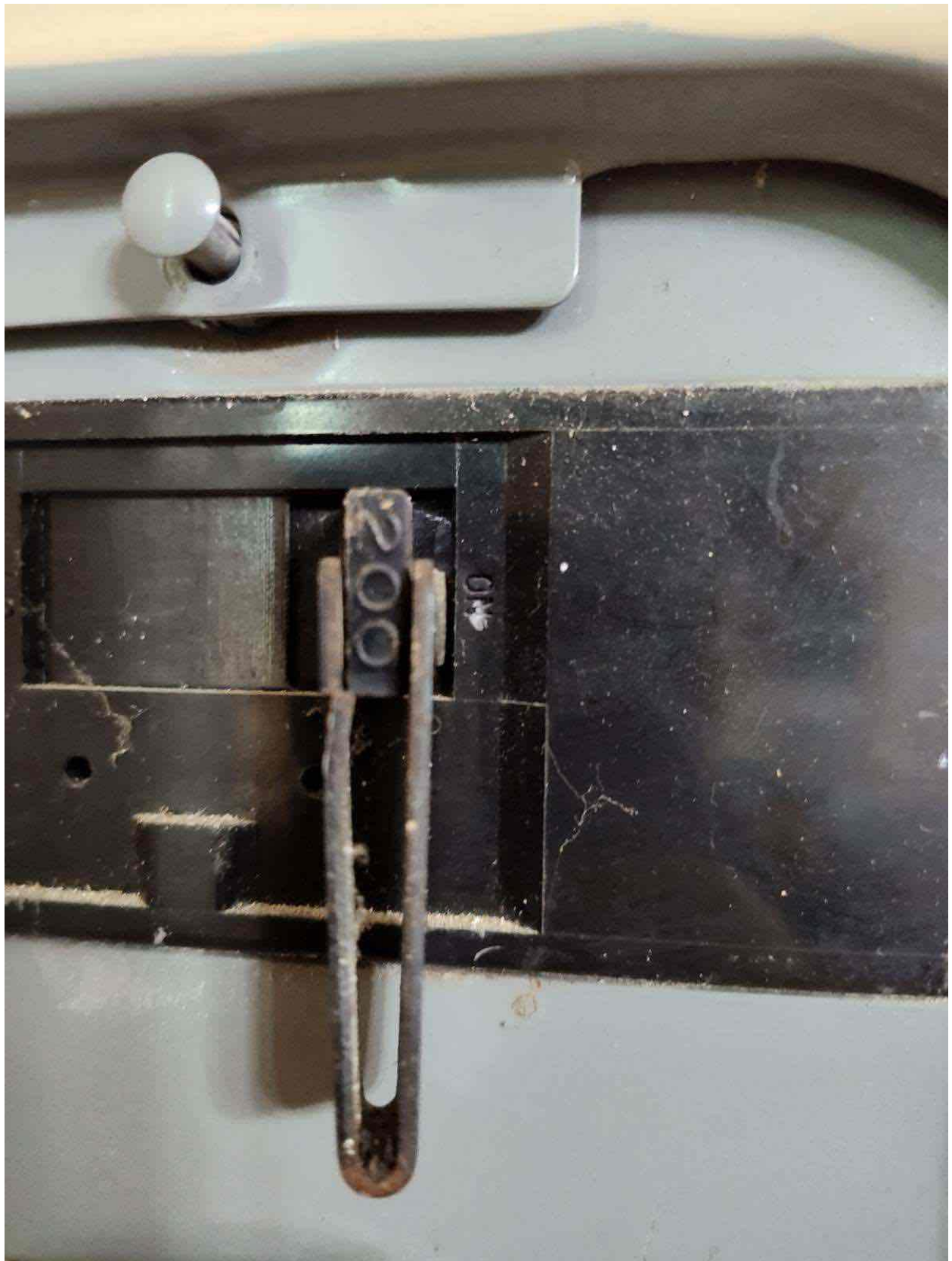
10 KA

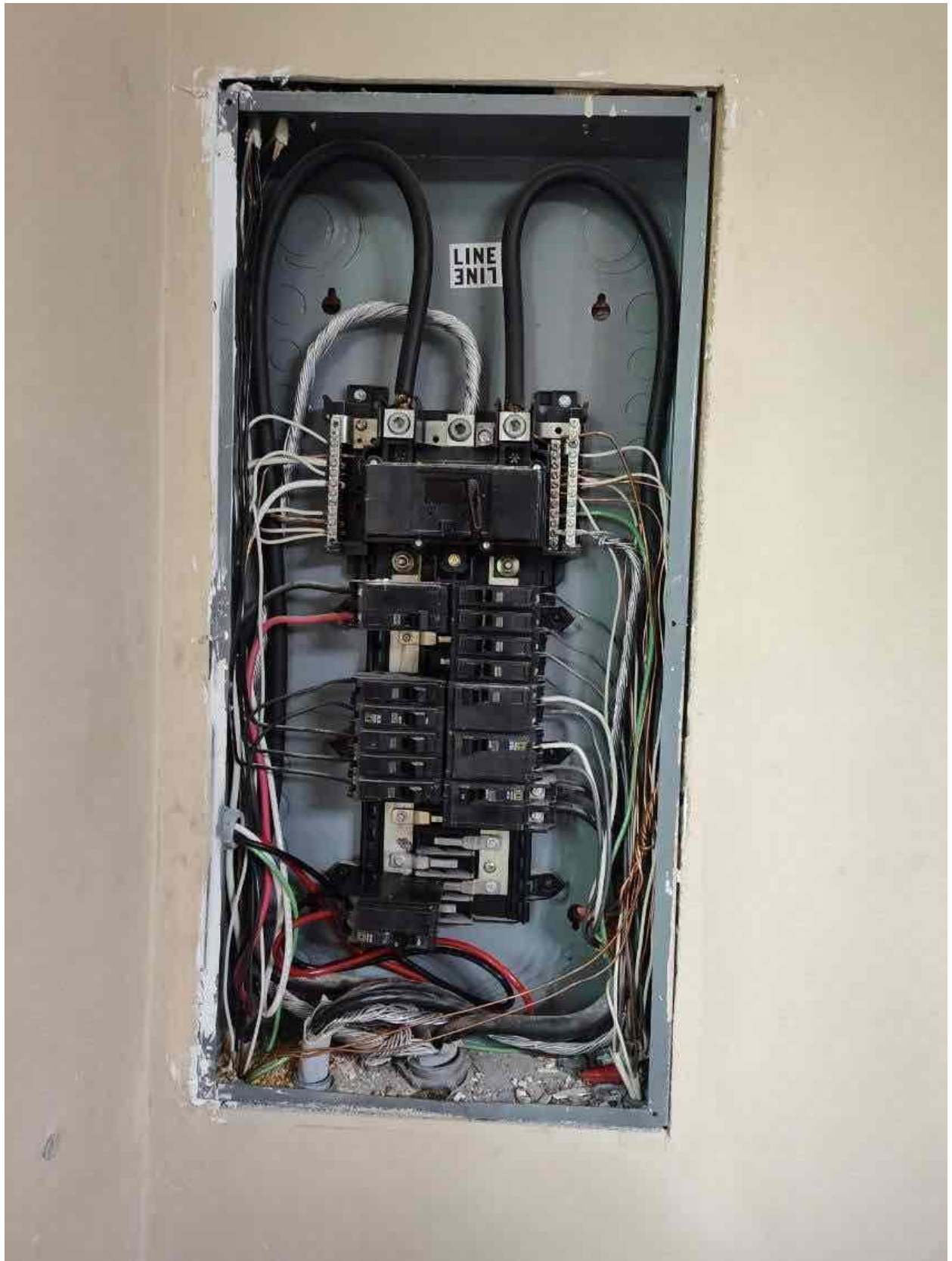
O/OFF

35

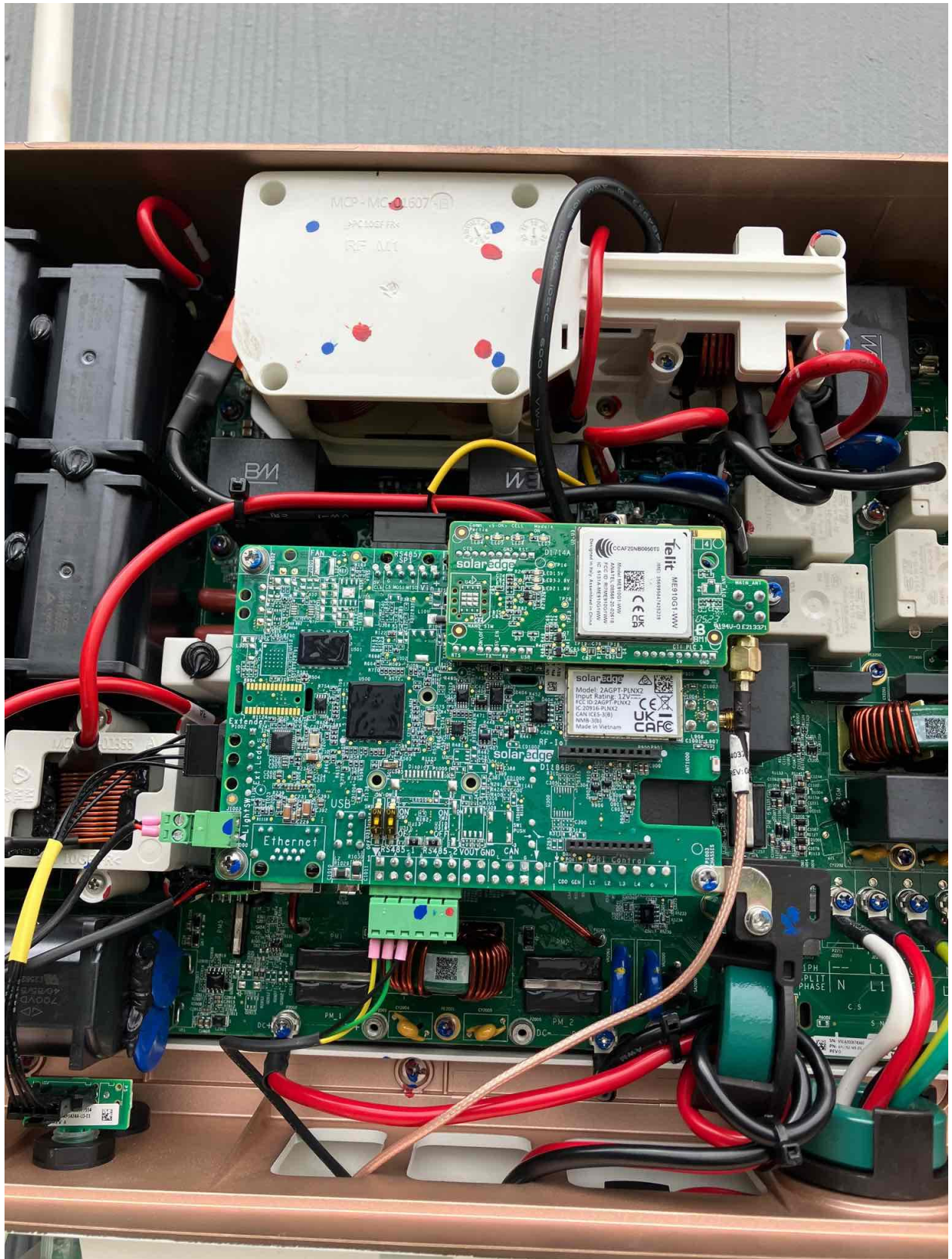
I/ON

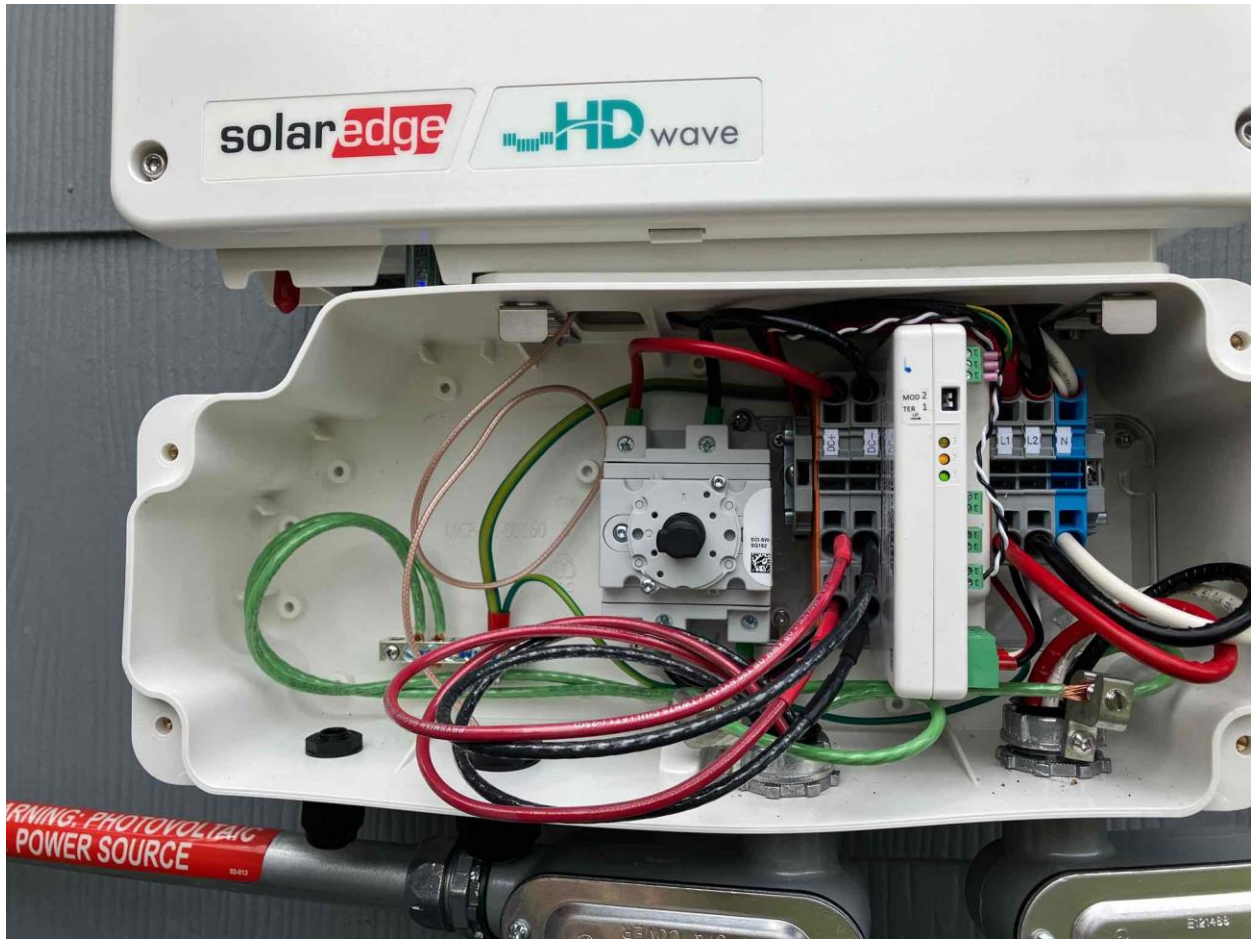














solar edge
Cellular Plug-in 5y plan, SetApp, Resi, SH4, US
PN: CELL-B-R05-US-S-52
QTY: 1
SN: SJ1023-1982319E7-BA
Made in China

ICCID: 890188200477675592F
Data this will start on the earlier of:
- Date of installation
- Date: 8-Aug-24
Made in China

Single Phase Inverter
with HD-Wave Technology

solar edge SE6000H - US
Grid Support Non-Isolated Utility Interactive Photovoltaic Inverter

Operating Voltage Range 163 - 240 - 229VAC
 Max Input Current 211 - 240 - 28.9VAC
 Max Continuous Output Power 500Wac @ 208V 600Wac @ 240V
 Voltage Min - Nom - Max 270 - 480VAC
 Max Continuous Output Current 18.8Aac
 Max Output Fault Current 24Aac @ 208V 28Aac @ 240V
 Max Utility Backfeed Current 73Aac
 Frequency Min - Nom - Max 50Hz
 Max Power Factor 0.98
 Max Ambient Temperature 50 °C - 60.0 - 60.5Hz
 Enclosure 60 °C
 With Type I Integrated ground fault protection / 4VFA 3P
 COMPLIES WITH SUPPLEMENTAL WIRING CONNECTION REQUIREMENTS
 Activation: iHoP qYxY 5ZxF 2F2E BEF x DUH0 M10 -

WIFI MAC:
 84:D6:CS:44:C6:BD
 ZigBee MAC:

PN: SE6000H - US000BE14
 SN: SV3822 - 0740D7DBF - BD



solar edge

PHOTOVOLTAIC RAPID SHUTDOWN SYSTEM



solar edge 740D7DBF - BD

ETL LISTED
 CONFORMS TO
 ANSI/UL 1741
 CERTIFIED TO
 CAN/CSA
 C22.2 NO 107



Intertek
 4004590



Contains FCC ID: 2AGPT-PLNX, IC: 20916-PLNX. The enclosed device complies with part 15 of the FCC Rules. Operation is subject to the following two conditions:
 (1) this device may not cause harmful interference and
 (2) this device must accept any interference received, including interference that may cause undesired operation.

PATENT MARKING NOTICE: SEE www.solaredge.com/groups/patent Made in Vietnam









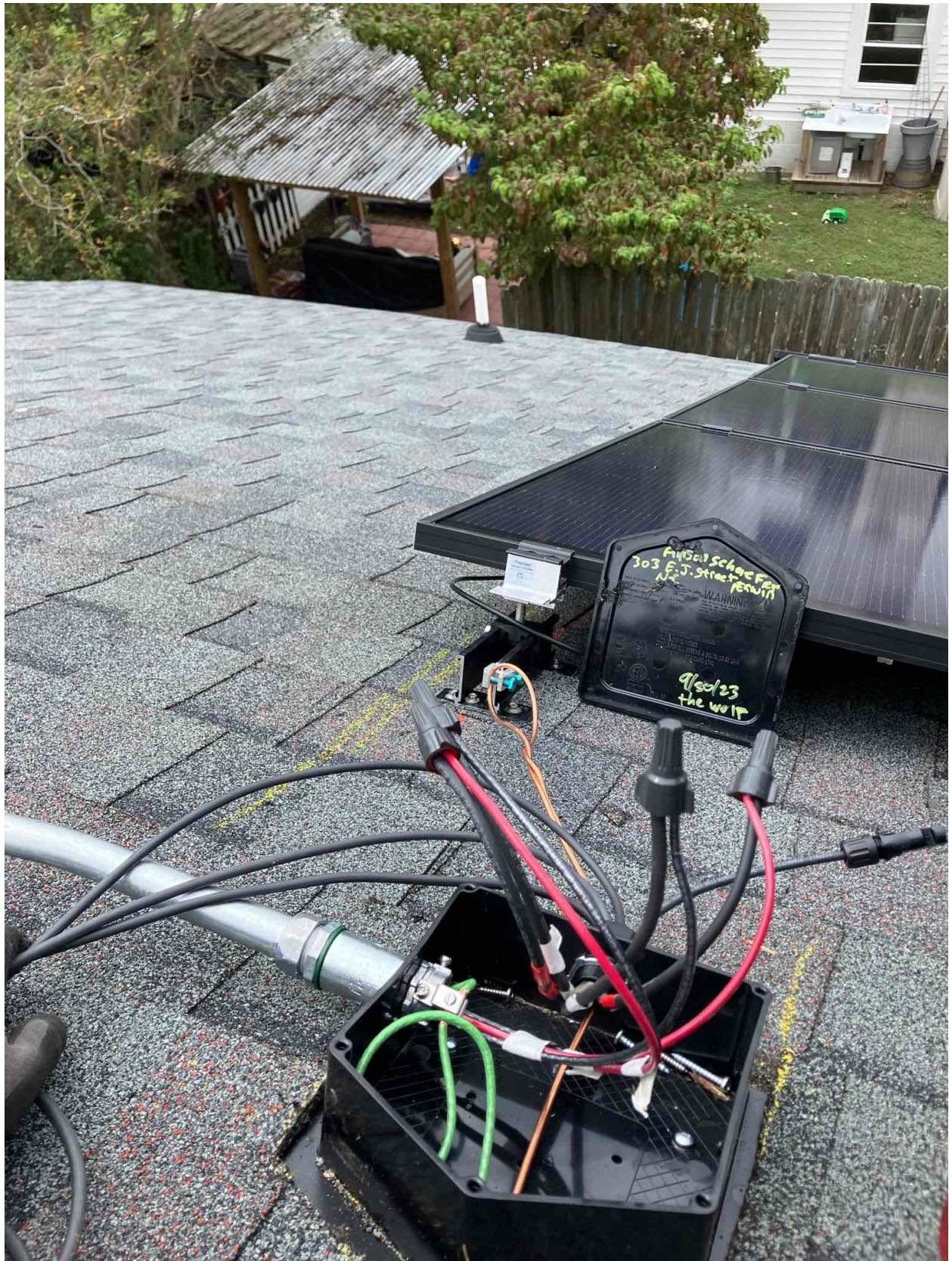






















Handwritten: Aufschraub Fed
303 E.J. street
München

WARNING!

READ INSTALLATION MANUAL
... ALL SCREWS 3 BOLTS: 15-20 LB-IN
... STANDARD 4741

Handwritten: a130/23
the wolf

REC REC 1000A
REC 1000A 40
REC 1000A 40

Power Rating 1500 VA	Number of Poles 1
Power Factor 0.9	Number of Phases 1
Rated Frequency 50/60 Hz	Rated Voltage 230 V AC
Rated Current 6.5 A	Rated Power 1500 VA
Rated Current (Inrush) 20 A	Rated Power (Inrush) 3000 VA
Rated Current (Surge) 30 A	Rated Power (Surge) 4500 VA

CE UK CA

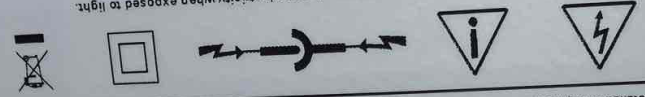
REC REC 1000A
REC 1000A 40
REC 1000A 40

1500 VA
1
0.9
50/60 Hz
230 V AC
6.5 A
1500 VA
20 A
3000 VA
30 A
4500 VA



EU/Europe Contact: REC Solar EMEA GmbH
 Balanstr. 71a, 81541 Munich, Germany, Tel: +49 (0)89-442-38590
 For other regions see: www.recgroup.com/contact

Warning electrical hazard. This module produces electricity when exposed to light.
 CAUTION: DO NOT DISCONNECT UNDER LOAD
 Avertissement: Risque de choc électrique. Ce module solaire produit de l'électricité lorsqu'il est exposé à la lumière.
 ATTENTION: NE PAS DECONNECTER SOUS TENSION



See installation manual for mechanical installation requirements and
 +) installation requirements to achieve a specified system type class

<p>410 W 0/+10 W +/-3% 49.4 V 8.30 A 59.2 V 8.81 A 1000 V 25 A 25 A +4666 / -2666 Pa* +7000 / -4000 Pa* Maximum Test Load Design Load (Values at STC: 1000 W/m² AM 1.5, cell temp 25°C)</p>	<p>Power Output (P_{max}) Watt Class Sorting Power Production Tolerance Rated Voltage (V_{mp}) Rated Current (I_{mp}) Open Circuit Voltage (V_{oc}) (+/- 3%) Short Circuit Current (I_{sc}) (+/- 3%) Maximum System Voltage (V_{sys}) Maximum Series Fuse (DC) (UL) Maximum Series Fuse (DC) (IEC) Maximum Test Load Design Load</p>
--	--

REC Alpha Pure-R Series
 REC410AA Pure-R
 Serial Number: FBB-7005210381
 Phone: +65 6485 9228
 www.recgroup.com

410 W
0/+10 W
+/-3%
49.4 V
8.30 A
59.2 V
8.81 A
1000 V
25 A
25 A
+4666 / -2666 Pa*
+7000 / -4000 Pa*
Maximum Test Load
Design Load
(Values at STC: 1000 W/m² AM 1.5, cell temp 25°C)

Power Output (P_{max})
Watt Class Sorting
Power Production Tolerance
Rated Voltage (V_{mp})
Rated Current (I_{mp})
Open Circuit Voltage (V_{oc}) (+/- 3%)
Short Circuit Current (I_{sc}) (+/- 3%)
Maximum System Voltage (V_{sys})
Maximum Series Fuse (DC) (UL)
Maximum Series Fuse (DC) (IEC)
Maximum Test Load
Design Load

REC Alpha Pure-R Series
 REC410AA Pure-R
 Serial Number: FBB-7005210381
 Phone: +65 6485 9228
 www.recgroup.com

410 W
0/+10 W
+/-3%
49.4 V
8.30 A
59.2 V
8.81 A
1000 V
25 A
25 A
+4666 / -2666 Pa*
+7000 / -4000 Pa*
Maximum Test Load
Design Load
(Values at STC: 1000 W/m² AM 1.5, cell temp 25°C)

Power Output (P_{max})
Watt Class Sorting
Power Production Tolerance
Rated Voltage (V_{mp})
Rated Current (I_{mp})
Open Circuit Voltage (V_{oc}) (+/- 3%)
Short Circuit Current (I_{sc}) (+/- 3%)
Maximum System Voltage (V_{sys})
Maximum Series Fuse (DC) (UL)
Maximum Series Fuse (DC) (IEC)
Maximum Test Load
Design Load

REC Alpha Pure-R Series
 REC410AA Pure-R
 Serial Number: FBB-7005210381
 Phone: +65 6485 9228
 www.recgroup.com

410 W
0/+10 W
+/-3%
49.4 V
8.30 A
59.2 V
8.81 A
1000 V
25 A
25 A
+4666 / -2666 Pa*
+7000 / -4000 Pa*
Maximum Test Load
Design Load
(Values at STC: 1000 W/m² AM 1.5, cell temp 25°C)

Power Output (P_{max})
Watt Class Sorting
Power Production Tolerance
Rated Voltage (V_{mp})
Rated Current (I_{mp})
Open Circuit Voltage (V_{oc}) (+/- 3%)
Short Circuit Current (I_{sc}) (+/- 3%)
Maximum System Voltage (V_{sys})
Maximum Series Fuse (DC) (UL)
Maximum Series Fuse (DC) (IEC)
Maximum Test Load
Design Load

REC Alpha Pure-R Series
 REC410AA Pure-R
 Serial Number: FBB-7005210381
 Phone: +65 6485 9228
 www.recgroup.com

410 W
0/+10 W
+/-3%
49.4 V
8.30 A
59.2 V
8.81 A
1000 V
25 A
25 A
+4666 / -2666 Pa*
+7000 / -4000 Pa*
Maximum Test Load
Design Load
(Values at STC: 1000 W/m² AM 1.5, cell temp 25°C)

Power Output (P_{max})
Watt Class Sorting
Power Production Tolerance
Rated Voltage (V_{mp})
Rated Current (I_{mp})
Open Circuit Voltage (V_{oc}) (+/- 3%)
Short Circuit Current (I_{sc}) (+/- 3%)
Maximum System Voltage (V_{sys})
Maximum Series Fuse (DC) (UL)
Maximum Series Fuse (DC) (IEC)
Maximum Test Load
Design Load

REC Alpha Pure-R Series
 REC410AA Pure-R
 Serial Number: FBB-7005210381
 Phone: +65 6485 9228
 www.recgroup.com

410 W
0/+10 W
+/-3%
49.4 V
8.30 A
59.2 V
8.81 A
1000 V
25 A
25 A
+4666 / -2666 Pa*
+7000 / -4000 Pa*
Maximum Test Load
Design Load
(Values at STC: 1000 W/m² AM 1.5, cell temp 25°C)

Power Output (P_{max})
Watt Class Sorting
Power Production Tolerance
Rated Voltage (V_{mp})
Rated Current (I_{mp})
Open Circuit Voltage (V_{oc}) (+/- 3%)
Short Circuit Current (I_{sc}) (+/- 3%)
Maximum System Voltage (V_{sys})
Maximum Series Fuse (DC) (UL)
Maximum Series Fuse (DC) (IEC)
Maximum Test Load
Design Load













EZ4
SOLAR

**WARNING: PHOTOVOLTAIC
POWER SOURCE**

FCDLABELS.COM

82-013



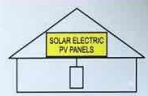
CAUTION
DUAL SOURCE SUPPLY
PROTECTIVE DEVICE OF
INTERCONNECTION
WARNING - ELECTRIC SHOCK
HAZARD - DO NOT TOUCH
TERMINALS - TERMINALS ON
BOTH THE LINE AND LOAD SIDE
MAY BE ENERGIZED IN THE OPEN
POSITION FOR SERVICE
OR ENERGIZED BOTH SOURCE
AND MAIN SUPPLY
BY POWER SOURCE

OPERATING CURRENT	25
NOMINAL LINE	240
OPERATING VOLTAGE	

CAUTION
DUAL POWER SUPPLY



**SOLAR PV SYS
EQUIPPED WITH
RAPID SHUTDOWN**



TURN RAPID SHUTDOWN SWITCH TO THE 'OFF' POSITION TO SHUT DOWN PV SYSTEM AND REDUCE SHOCK HAZARD IN THE ARRAY

0240
REVERSE



CAUTION

DUAL POWER SUPPLY

FCDLABELS.COM | FFS016

PHOTOVOLTAIC POINT OF
INTERCONNECTION.

WARNING - ELECTRIC SHOCK
HAZARD. DO NOT TOUCH
TERMINALS. TERMINALS ON
BOTH THE LINE AND LOAD SIDE
MAY BE ENERGIZED IN THE OPEN
POSITION. FOR SERVICE
DE-ENERGIZE BOTH SOURCE
AND MAIN BREAKER
PV POWER SOURCE

MAXIMUM AC OPERATING CURRENT: 25 A

MAXIMUM AC OPERATING VOLTAGE: 240 V

FCDLABELS.COM | FFS019

EAT·N®

General Duty Safety Switch
Interrupteur de sécurité à usage général
Interruptor de seguridad de servicio general
60 A, 240 V~, 60 Hz
Complete ratings inside
Valeurs nominales complètes à l'intérieur
Información completa de capacidades en el interior
Further instructions inside
Autres instructions à l'intérieur
Instrucciones adicionales en el interior
Made in U.S.A. / Fabriqué aux E.-U. / Hecho en E.U.A.

⚠ DANGER
HAZARDOUS VOLTAGE WILL CAUSE SEVERE INJURY OR DEATH.
• Never open panel or switch before doing any work inside. Strip back all wires and cover with tape.
• Never touch any exposed wires or terminals.
TENSION DANGEREUSE. PEUT CAUSER DES BLESSURES GRAVES OU LA MORT.
• Ne jamais manœuvrer l'interrupteur lorsque la coque est ouverte.
• Couper l'alimentation en amont de l'interrupteur avant toute intervention. Remarque les câbles, fermez le couvercle avant de commencer tout travail.
⚠ PELIGRO
VOLTAGE PELIGROSO. PUEDE CAUSAR HERIDAS SEVERAS O LA MUERTE.
• Nunca abra el interruptor con la cubierta abierta.
• Desconectar la alimentación del interruptor antes de trabajar dentro del mismo. Etiquetar todos los cables. Cerrar la cubierta antes de empezar el interruptor.

30-43060



CAUTION
DUAL POWER SUPPLY
PCDLABELS.COM / P15616

PHOTOVOLTAIC SYSTEM
⚠ AC DISCONNECT ⚠

OPERATING VOLTAGE: **240** VOLTS
OPERATING CURRENT: **25** AMPS
PCDLABELS.COM 02-005

RAPID SHUTDOWN SWITCH FOR SOLAR PV SYSTEM
PCDLABELS.COM 17-022

⚠ WARNING
ELECTRIC SHOCK HAZARD

DO NOT TOUCH TERMINALS
TERMINALS ON BOTH THE LINE AND
LOAD SIDES MAY BE ENERGIZED
IN THE OPEN POSITION
PCDLABELS.COM 06-012

ON
I

OFF
O

E121488

WARNING
ELECTRIC SHOCK HAZARD
DO NOT TOUCH TERMINALS
TERMINALS ON BOTH LINE AND
LOAD SIDES MAY BE ENERGIZED
IN THE OPEN POSITION
DC VOLTAGE IS
ALWAYS PRESENT WHEN
SOLAR MODULES ARE
EXPOSED TO SUNLIGHT

**PHOTOVOLTAIC SYSTEM
EQUIPPED WITH
RAPID SHUTDOWN**

If you have any questions about your system, please call
our Customer Support Team at
888.557.6431
or visit freedomforever.com/customer-service
This solar PV system was installed by

*Freedom Forever is a licensed contractor in all states it operates in. For more information visit freedomforever.com/licenses

solaredge

HD wave

ON
OFF



MAXIMUM POWER POINT CURRENT (Imp)	16.5	A
MAXIMUM POWER POINT VOLTAGE (Vmp)	15	V
MAXIMUM SYSTEM VOLTAGE (Vmax)	480	V
SHORT-CIRCUIT CURRENT (Isc)	N/A	A

solar**edge**

**WARNING: PHOTOVOLTAIC
POWER SOURCE**





WARNING
PHOTOVOLTAIC SYSTEM
EQUIPPED WITH
RAPID SHUTDOWN
888.597.6431
Freedom
solar **addc** JHD **HD** HD

EATON
CAUTION
PHOTOVOLTAIC SYSTEM
EQUIPPED WITH
RAPID SHUTDOWN
SWITCH FOR
SOLAR PV SYSTEM
WARNING
ELECTRIC SHOCK HAZARD
DO NOT TOUCH TERMINALS
TERMINALS ON BOTH THE CELL AND
WIRE ENDS MAY BE ENERGIZED
AT THE OPEN POSITION

POWER SOURCE





DC Output:
DC Input:
Open Circuit Voltage:

SolarEdge | IndOP

505W/5-80V/15A
12.5-83V/14.1A
1V
MADE IN : VIETNAM



600V
PV

600V



030505999-72



Do Not Remove



30505999-72



Intertek 4004590

P505-4NM4MBM NM23 A5
SN:SV1223A-030505999-72



CAUTION

HOT SURFACES-TO REDUCE THE RISK OF BURNS-DO NOT TOUCH.
RISK OF ELECTRIC SHOCK-WHEN THE PHOTOVOLTAIC ARRAY IS EXPOSED TO LIGHT, IT SUPPLIES A DC VOLTAGE TO EQUIPMENT. COVER PV MODULE WITH OPAQUE MATERIAL BEFORE CONNECTING OR DISCONNECTING THIS OPTIMIZER. DURING FAULT, ZERO CURRENT IS SOURCED INTO DC ARRAY BY CONVERTER.

WARNING ELECTRIC SHOCK HAZARD. THE DC CONDUCTORS OF THIS PHOTOVOLTAIC SYSTEM ARE UNGROUNDED AND MAY BE ENERGIZED.

AVERTISSEMENT

RISQUE DE CHOC ELECTRIQUE: QUAND LE CHAMP PHOTOVOTAIQUE EST EXPOSE A LA LUMIERE, UNE TENSION CC EST FOURNIE A CET EQUIPEMENT.
SURFACES CHAUDES: NE PAS TOUCHER, AFIN DE REDUIRE LES RISQUES DE BRULURES LE COURANT DE RETOUR INJECTE PAR LE CONVERTISSEUR EN CAS DE DEFAILLANCE DANS LE MODULE PV EST TOUJOURS NUL.









