





22 Kit GEL

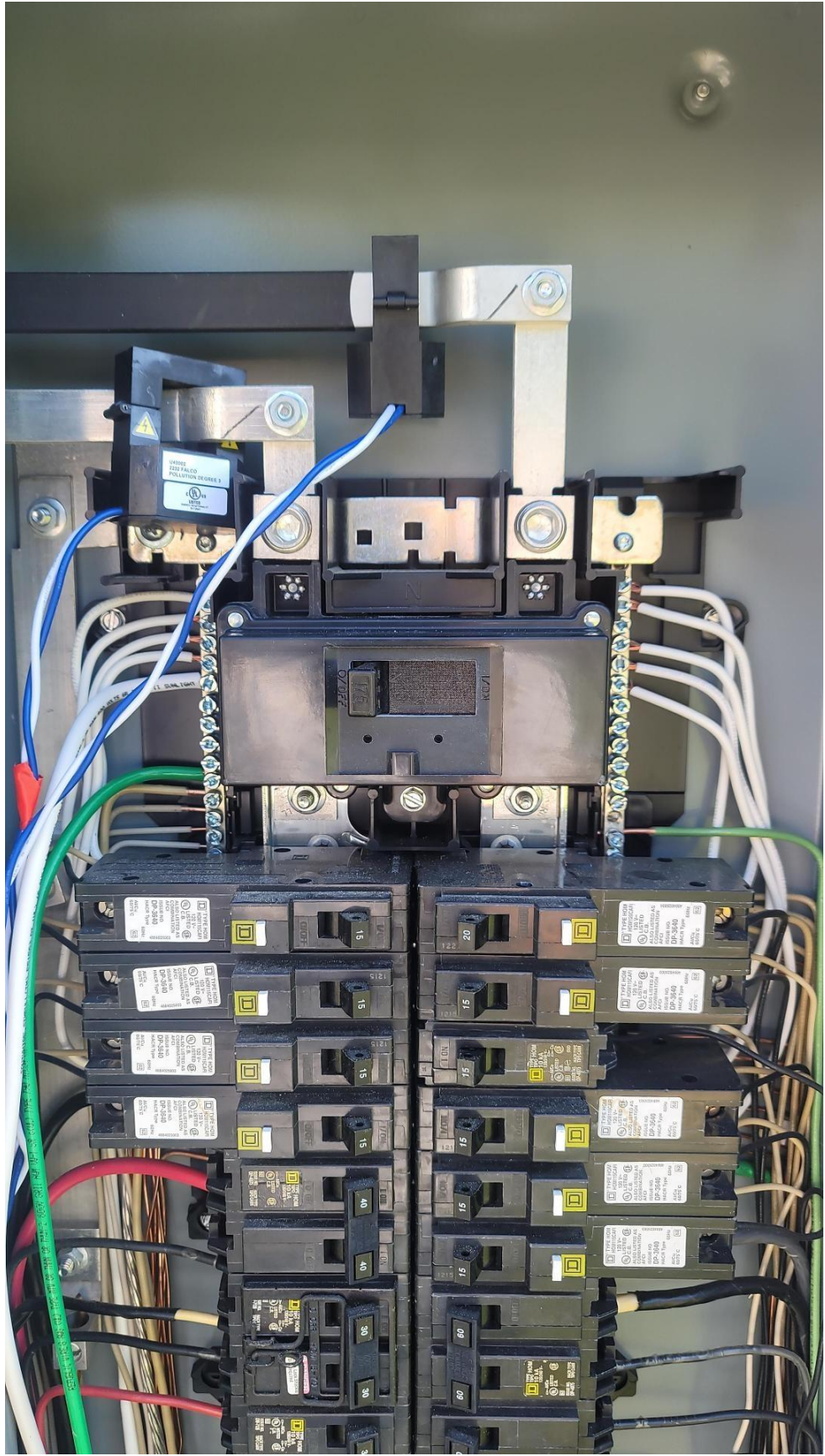
24 FRIG

26 Microwave

28

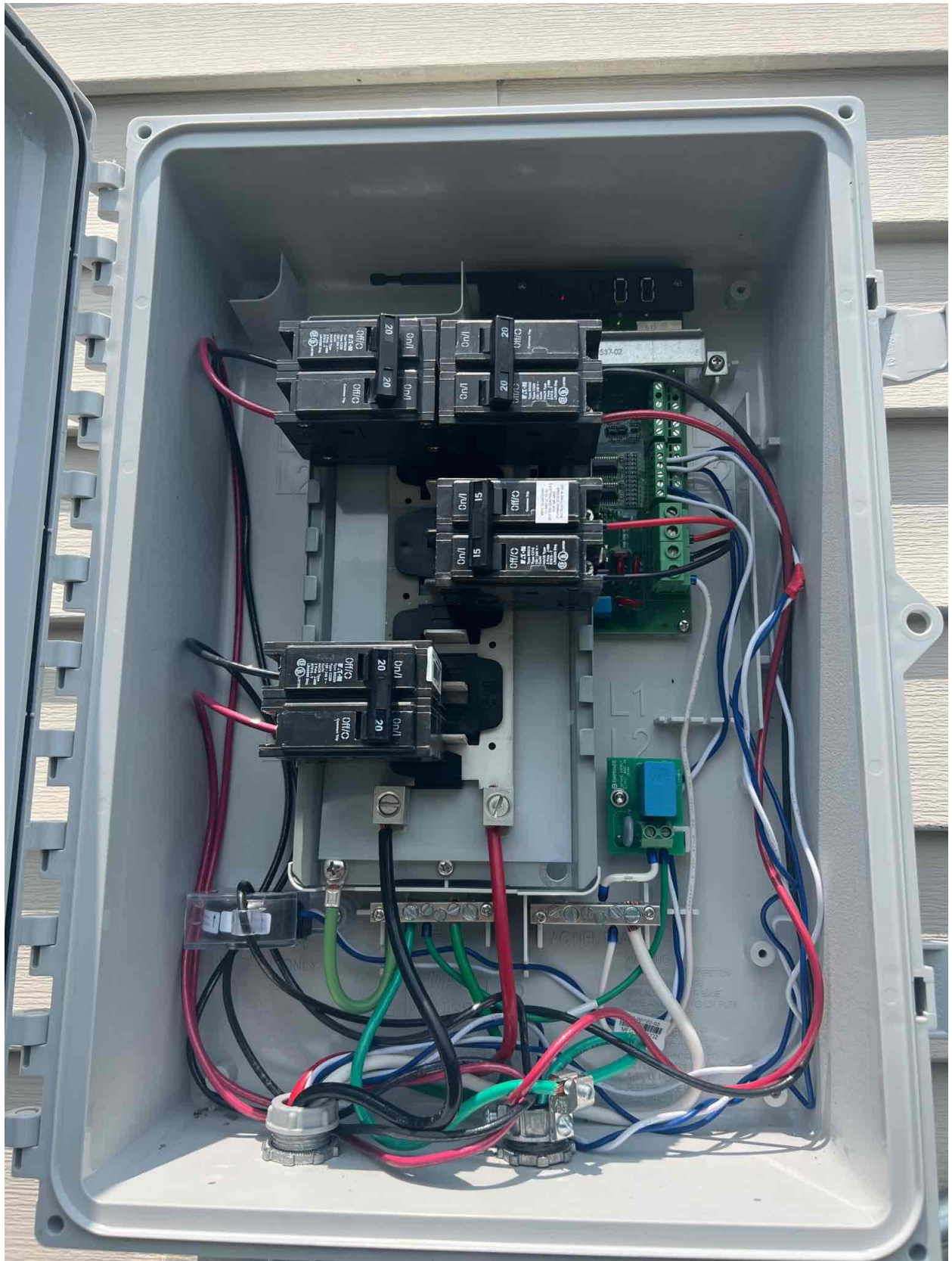
30

SOLAR PV BREAKER
BREAKER IS BACKFED
DO NOT RELOCATE
FCDLABELS.COM 02-070











IQ Combiner 4

Photovoltaic
Combiner Box
X-IQ-AM1-240-4



Electrical ratings

Voltage 240VAC, 60Hz
 DG Breakers 80A MAX (combined)
 DG Inputs 64A MAX (combined)
 Output 65A MAX, 90A MAX feeder OCPD
 Temperature 46°C MAX ambient
 For DG breaker, use only Eaton BR series.

202249024233

P/N:

S/N:

202249024233

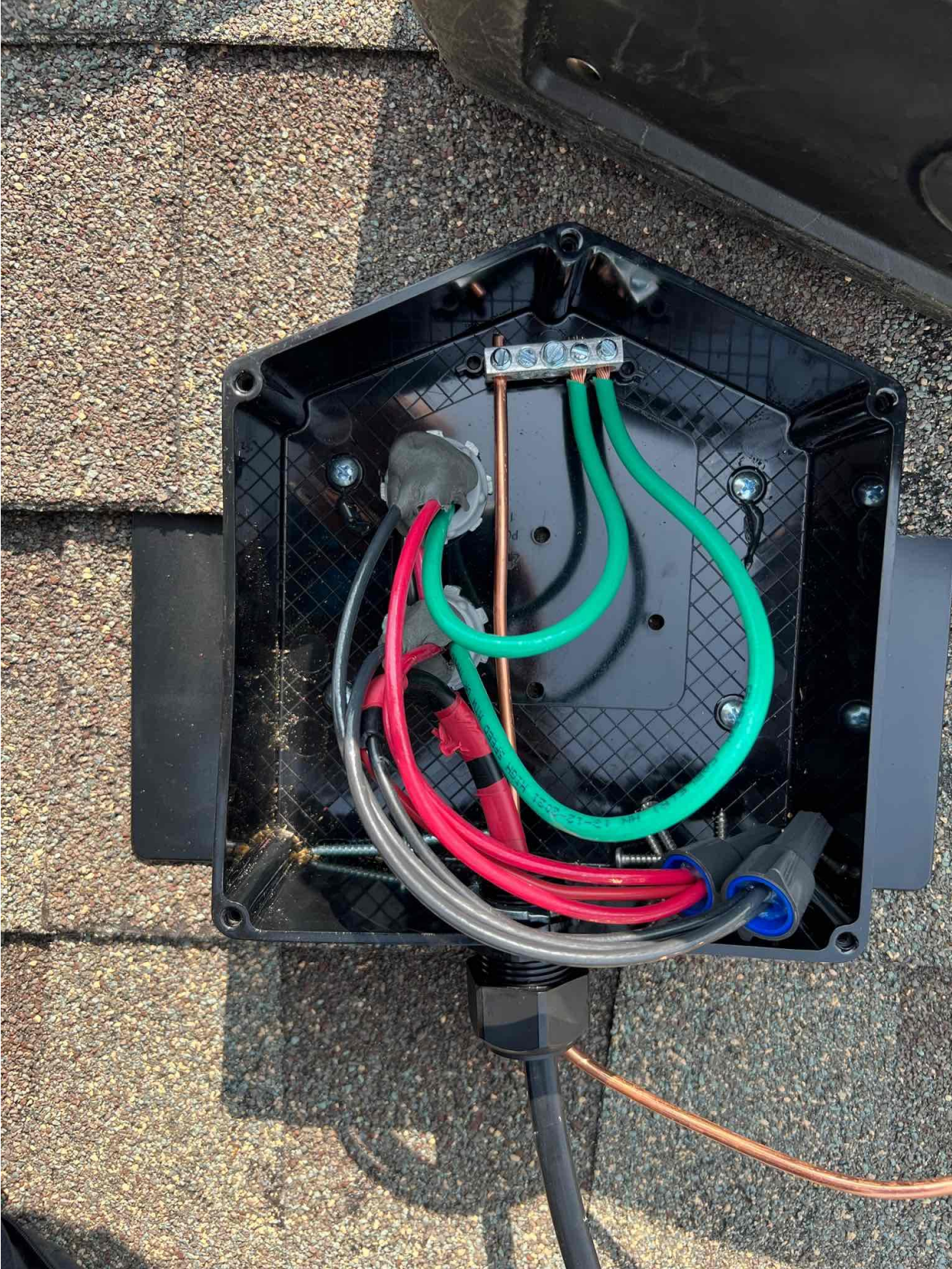
883-00356 23

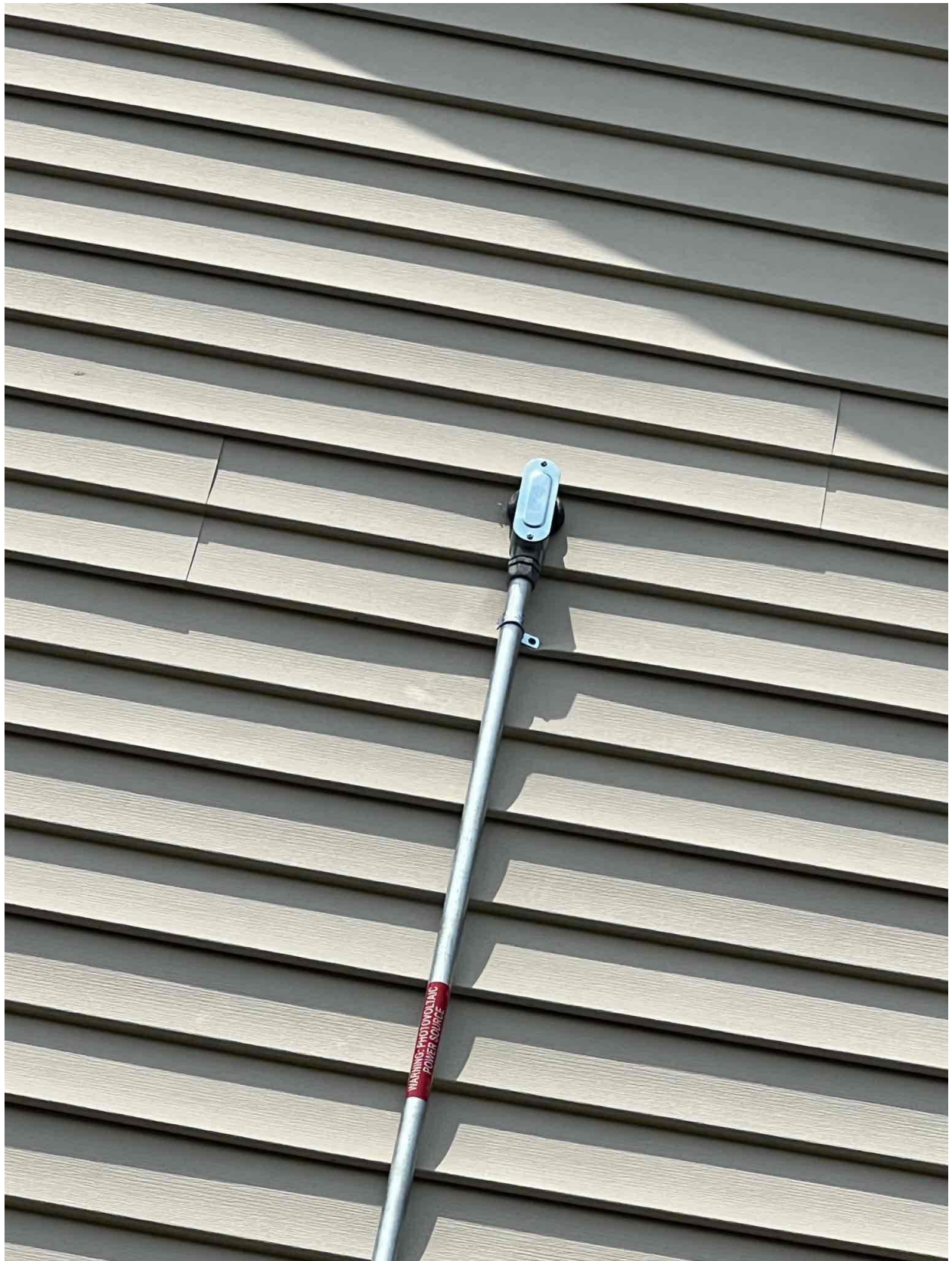
Dedicated solar and DG Combiner Box - do not add loads
 10 AMP or 15 AMP IQ Gateway Breaker not used for backfeed

Connection		Wire sizes	Torque
DG Breaker (1, 2, 3, 4)		14-10 AWG	2.2 Nm (20 lb-in)
		8 AWG	2.8 Nm (25 lb-in)
		6-4 AWG	3.0 Nm (27 lb-in)
60A Circuit Breaker only		4-1/0 AWG	5.0 Nm (45 lb-in)
IQ Gateway Breaker		14-10 AWG	2.26 Nm (20 lb-in)
Neutral and ground	Large screw	2-1/0 AWG	5.6 Nm (45 lb-in)
		14-3 AWG	5.1 Nm (45 lb-in)
	Small screw	6 AWG	3.6 Nm (32 lb-in)
		8 AWG	2.6 Nm (23 lb-in)
		10-14 AWG	2.3 Nm (20 lb-in)
Main lug		10-4 AWG	5.0 Nm (45 lb-in)
		3-2/0 AWG	5.6 Nm (50 lb-in)

Copper conductors only, rated min. 75°C.
 Follow NFPA 70 (NEC), or CSA C22.1 part 1, and all local codes.
 For DG Breakers larger than 20A, use wire insulated for 90°C
 based on 75°C ampacities.

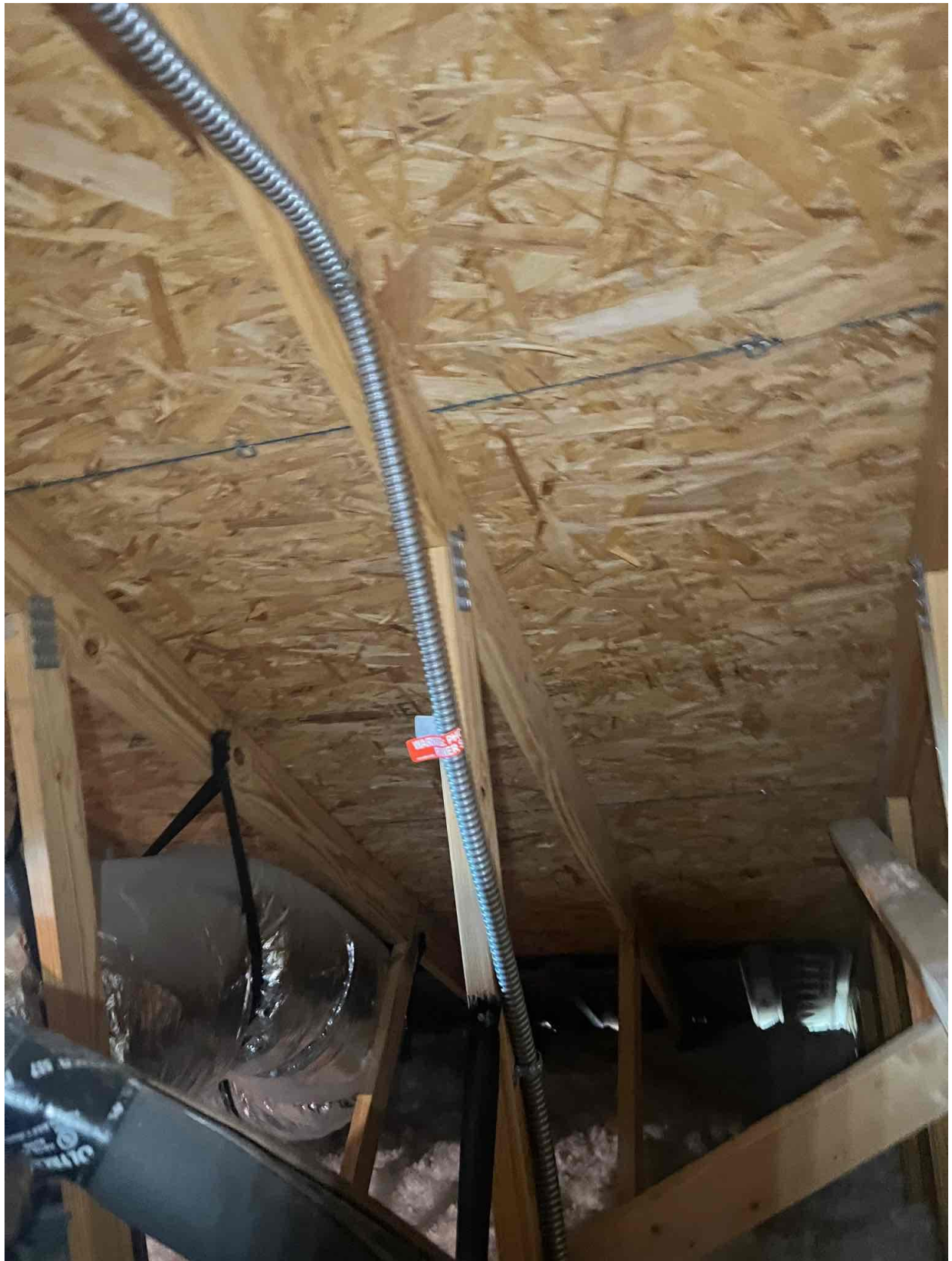
Designed in California and New Zealand
 Made in Mexico





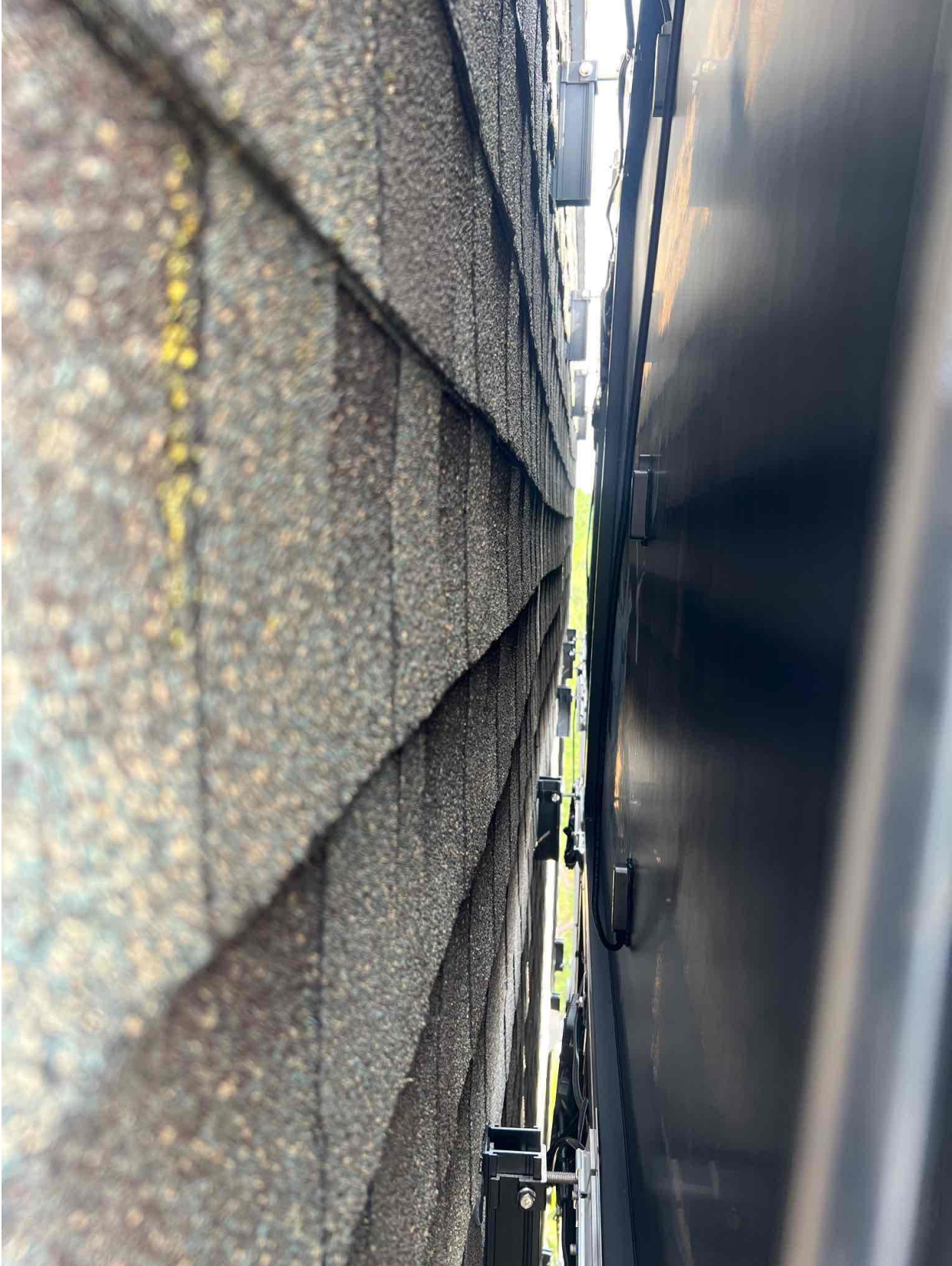


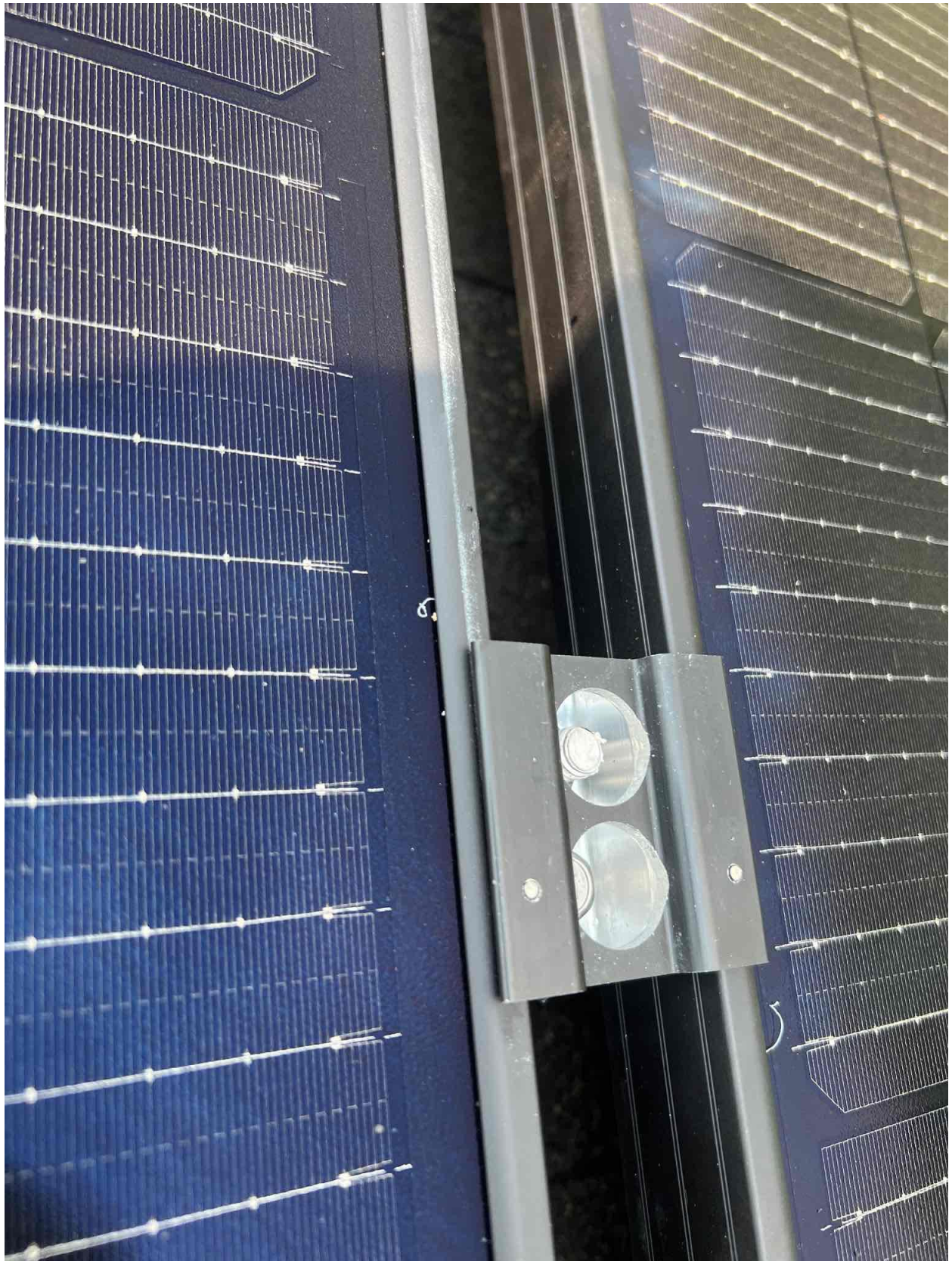




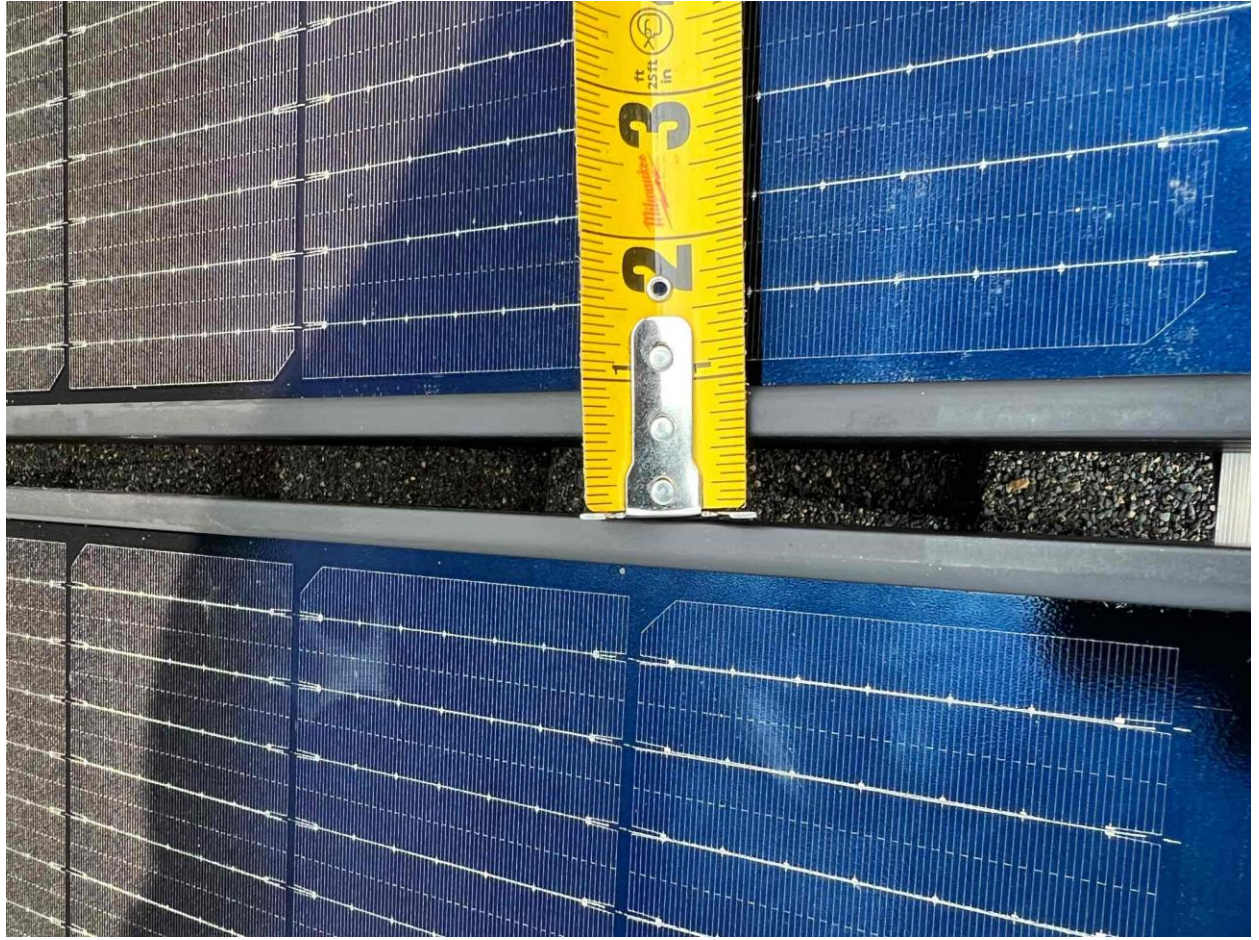














Model Type : FF-MP-BBB-400

Nominal Maximum Power	(Pmax):	400(0-5)W
Maximum operating Voltage	(Vmp):	31.01V
Maximum operating Current	(Imp):	12.90A
Open Circuit Voltage	(Voc):	37.04(±3%)V
Short Circuit Current	(Isc):	13.79(±3%)A
Maximum System Voltage	:	1500V
Maximum Series Fuse Rating	:	25A
Fire Rating	:	Type 1

All electrical data at Standart Test Conditions (STC): Irradiance of 1000W/m², spectrum AM1.5 and temperature of 25°C.

WARNING - ELECTRIC HAZARD



This solar module produces electrical voltage when exposed to sunlight or intense artificial lights. Proper precautions associated with electrical power systems must be taken while handling and installing this product.

PLEASE READ THE INSTRUCTION MANUAL FOR MORE INFORMATION PRIOR TO INSTALLATION.



Conforms to UL STD
UL 61730-1/-2,
UL 61215-1/-1-1/-2,
Certified to CSA STD.
C22.2 #61730-1/-2
5019047

Made in Indonesia

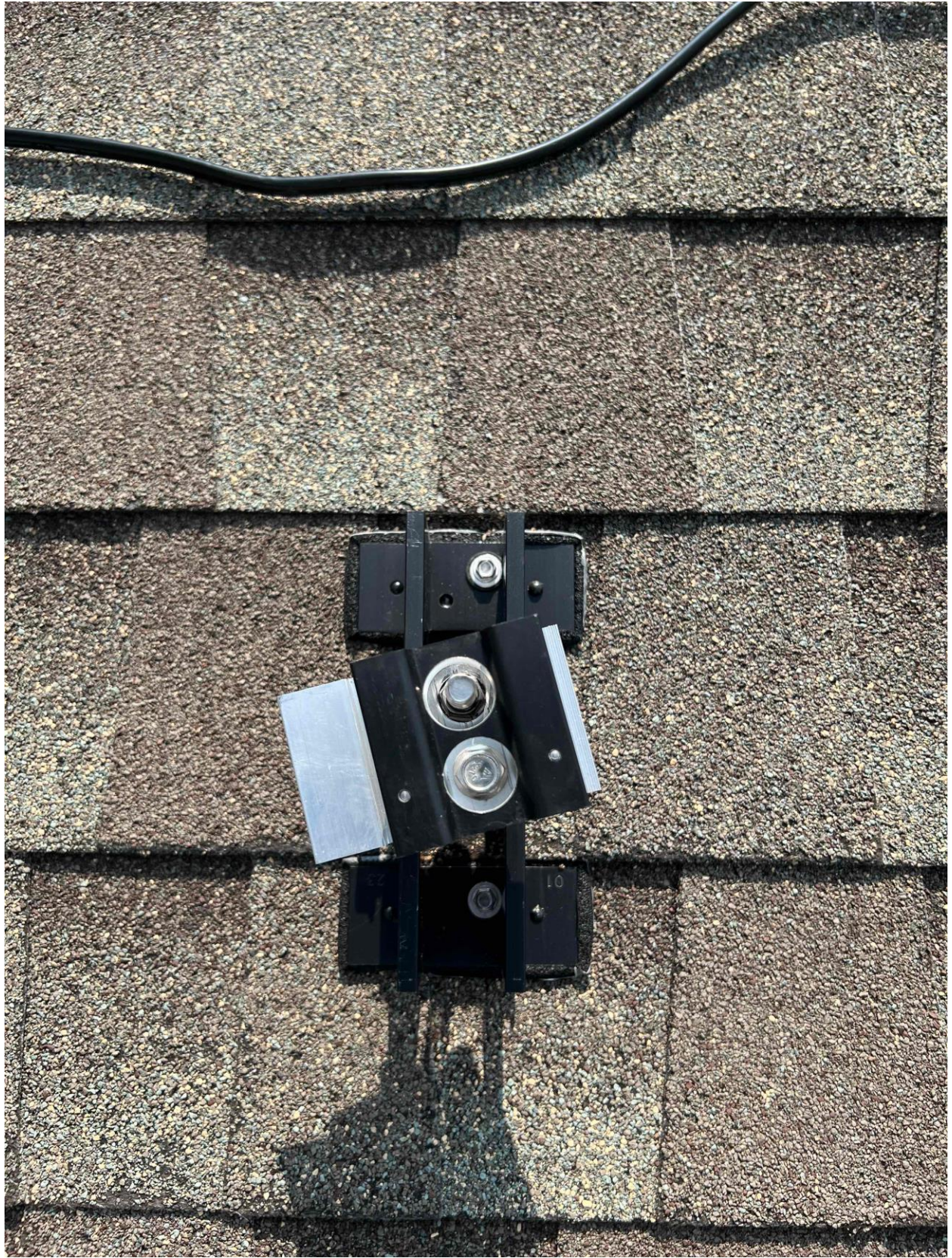














EMERGENCY RESPONDER
THIS SOLAR PV SYSTEM IS
EQUIPPED WITH RAPID SHUTDOWN

TURN RAPID SHUTDOWN
SWITCH TO THE 'OFF'
POSITION TO SHUT DOWN
THE ENTIRE PV SYSTEM.



0L2000 240V 30 AMP TYPE COM 307A 1.0KN
#222 837201 1637
DUKE ENERGY PROGRESS
305 529 253

OpenWay

WARNING
DUAL POWER SUPPLY
SOURCES: UTILITY GRID AND
PV SOLAR ELECTRIC SYSTEM

UL LISTED 5PKS TOPAZ 3/4" CHINA COVER

EATON

General Duty Safety Switch
Interrupteur de sécurité à usage général
Interruptor de seguridad de servicio general
60 A, 240 V~, 60 Hz
Complete ratings inside
Valeurs nominales complètes à l'intérieur
Información completa de capacidades en el interior
Further instructions inside
Autres instructions à l'intérieur
Instrucciones adicionales en el interior
Made in U.S.A. / Fabriqué aux É.-U. / Hecho en E.U.A.

⚠ DANGER
HAZARDOUS VOLTAGE. WILL CAUSE SEVERE INJURY OR DEATH.
• Never operate switch with cover open.
• Turn OFF power ahead of switch before doing any work inside. Replace all parts. Close cover before turning power ON.
TENSION DANGEREUSE. PEUT CAUSER DES BLESSURES GRAVES OU LA MORT.
• Ne jamais manipuler l'interrupteur lorsque le couvercle est ouvert.
• Couper l'alimentation en amont de l'interrupteur avant toute intervention. Remplacer les pièces. Fermer le couvercle avant de remettre sous tension.
⚠ PELIGRO
VOLTAGE PELIGROSO. PUEDE CAUSAR HERIDAS SEVERAS O LA MUERTE.
• Nunca opere el interruptor con la cubierta abierta.
• Desconectar la alimentación del interruptor antes de cualquier operación del mismo. Reemplazar todas las partes. Cerrar la cubierta antes de energizar el interruptor.

30-4300



ON



OFF


⚠ WARNING ⚠
ELECTRIC SHOCK HAZARD
DO NOT TOUCH TERMINALS
TERMINALS ON BOTH LINE AND
LOAD SIDES MAY BE ENERGIZED
IN THE OPEN POSITION
DC VOLTAGE IS
ALWAYS PRESENT WHEN
SOLAR MODULES ARE
EXPOSED TO SUNLIGHT
F00LABELS.COM | F19991



PHOTOVOLTAIC SYSTEM
AC DISCONNECT
OPERATING VOLTAGE: 240 VOLTS
OPERATING CURRENT: 41.14 AMPS
F00LABELS.COM 82-025



 ENPHASE[®]

NOTICE
PV SYSTEM COMBINER PANEL
DO NOT ADD LOADS
TO THIS PANEL
FCDLABELS.COM | FT1006

 **WARNING**
ELECTRIC SHOCK HAZARD
TERMINALS ON THE LINE AND
LOAD SIDES MAY BE ENERGIZED
IN THE OPEN POSITION
FCDLABELS.COM 17-006

PHOTOVOLTAIC SYSTEM
 **DC DISCONNECT** 
OPERATING VOLTAGE VDC
OPERATING CURRENT AMPS
MAX SYSTEM VOLTAGE VDC
SHORT CIRCUIT CURRENT AMPS
CHARGE CONTROLLER MAX AMPS
FCDLABELS.COM 02-029





22 Kit GEL

24 FRIG

26 Microwave

28

30

SOLAR PV BREAKER
BREAKER IS BACKFED
DO NOT RELOCATE
FCDLABELS.COM 02-070

