







INSTALLATION
INFORMATION

FOR PERFORMANCE PANELS
MUST BE INSTALLED IN

253-020-7400

SPACE PANELS
3/8 INCH AT ENDS
1/3 INCH AT EDGES

THIS SIDE DOWN
ESTE LADO ABAJO

STRENGTH AXIS

FOR INFORMATION

SEE INSTRUCTIONS

FOR USE

SEE INSTRUCTIONS

FOR USE

SEE INSTRUCTIONS

FOR USE

SEE INSTRUCTIONS

FOR USE

SEE INSTRUCTIONS

FOR USE



INSTALLATION
INFORMATION

FOR JOIST
PERFORMANCE PANELS
MUST BE INSTALLED IN

253-020-7400

SPACE PANELS
1/8 INCH AT ENDS

1/3 INCH AT EDGES

THIS SIDE DOWN
ESTE LADO ABAJO

EL CÔTE EN DEBAJO

STRENGTH AXIS

STRENGTH AXIS

800-648-6603

800-648-6603



INSTALLATION
INFORMATION
FOR PROPER
PERFORMANCE PANELS
MUST BE INSTALLED IN
ACCORDANCE WITH
APA RECOMMENDATIONS

800-648-6803
MADE IN USA

APA
FORMING
CORPORATION
11000
N. CENTRAL
EXPRESSWAY
MEMPHIS, TN 38114



PAR
BUILDING PRODUCTS
CORP. NC
PAR

OSB
UNIVERSITY
PRODUCTS

20







ACCORDANCE WITH
APA RECOMMENDATION

APA PRODUCT SUPPORT
253-620-740

SPACE PANELS
1/8 INCH AT ENDS
1/8 INCH AT EDGES

THIS SIDE DOWN
ESTE LADO ABajo
VE ESTE EN DENTRO

↑ STRENGTH AXIS
THIS DIRECTION

FOR CUSTOMER SUPPORT
1-800-848-6848

MADE IN US

ACCORDANCE WITH
APA RECOMMENDATION

APA PRODUCT SUPPORT
253-620-740

SPACE PANELS
1/8 INCH AT END
1/8 INCH AT EDGES

THIS SIDE DOWN
ESTE LADO ABajo
COTE EN Desso

↑ STRENGTH AXIS
THIS DIRECTION

LP CUSTOMER SUPPORT
1-800-648-1880

MADE IN US

B2QT

SPACE PANELS
1/8 INCH AT EDGES
THIS SIDE DOWN
ESTE LADO ABajo
COTE EN Desso



STRENGTH AXIS
DIRECTION
DO NOT
DOWN
EDGES
ENDS

APA RECOMMENDATION
APA PRODUCT SUPPLY
253-620-7411
SPACE PER
FINISH AT EN
FINISH AT ED
THIS SIDE DO
NOT USE FOR
CEILING EN DES
STRENGTH AXI
THIS DIRECTIO
FOR CUSTOMER SUP
1-800-648-7111
MADE IN CANADA

B20

APA





ATTENTION
RATED IN
24/10
7-18 Category 4
100%
100%
100%



ATTENTION
100%
174 Company, Inc.
1111
1111



APA
ATTN: WOOD
1-800-541-9913
www.apa.org





2
KODAK
SIDE

274
ALGA













 **ENPHASE**®

IQ8+

Grid Support Utility Interactive Inverter
Multimode Inverter

Off-grid Power Factor: -1 to 0 to +1
Grid-tied Power Factor: +/- 0.85
DC input range: 25-58 V
Max. input short-circuit current: 15 A
Max. input continuous current: 10.6 A
AC output voltages: 240 V
AC output currents: 1.21 A
AC output frequency: 60 Hz
AC output power (max. continuous): 290 VA
Operating temperature: -40 °C to +60 °C
Ingress protection: NEMA Type 6
Photovoltaic Rapid Shutdown Equipment
NEC 690.12 and C22.1-2015 Rule 64-218
UL1741 SA Compliant | Assembled in India



This device complies with part 15 of the FCC Rules. Operation is subject to the following two conditions: (1) This device may not cause harmful interference. (2) This device must accept any interference received, including interference that may cause undesired operation.



CAUTION: RISK OF SHOCK. WARRANTY VOID IF COVER REMOVED. NO USER SERVICEABLE PARTS INSIDE. REFER SERVICING TO QUALIFIED SERVICE PERSONNEL.

WARNING: ELECTRIC SHOCK HAZARD. DC CONDUCTORS OF THIS PHOTOVOLTAIC SYSTEM ARE UNGROUNDED AND MAY BE ENERGIZED. AC AND DC VOLTAGE SOURCES TERMINATE INSIDE THIS EQUIPMENT. DISCONNECT BOTH BEFORE SERVICING. PHOTOVOLTAIC ARRAY SUPPLIES A DC VOLTAGE TO THIS EQUIPMENT WHEN EXPOSED TO LIGHT. HOT SURFACES: TO REDUCE THE RISK OF BURNS - DO NOT TOUCH.

ATTENTION: RISQUE D'ELECTROCUTION. LES CONDUCTEURS CC DE CE SYSTEME PHOTOVOLTAIQUE NE SONT PAS RELIES A LA TERRE ET PEUVENT ETRE SOUS TENSION. DES SOURCES DE TENSION CA ET CC SONT CONNECTEES A CET APPAREIL. ISOLER LES DEUX SOURCES AVANT TOUTE INTERVENTION. LES CABLES COURANT CONTINU SONT SOUS TENSION LORSQUE LE CHAMP PHOTOVOLTAIQUE EST EXPOSE A LA LUMIERE. RISQUE DE BRULURE, NE PAS TOUCHER.

TrinaSolar
TSM-390DE09C.07

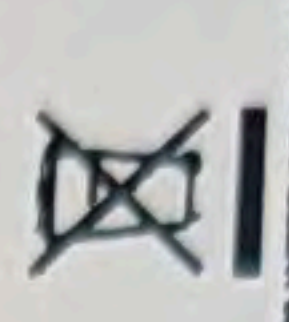
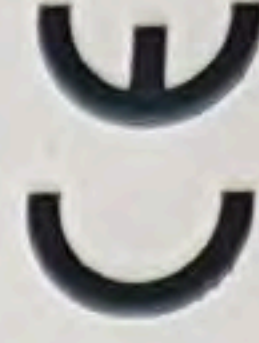


Maximum Power 390W*
 Maximum Power Voltage 33.8V
 Maximum Power Current 11.54A
 Open Circuit Voltage 40.8V*
 Short Circuit Current 12.14A*
 Maximum Series Fuse 25A
 Power Selection 0 ~ +5W
 Module Application Class A
 Maximum System Voltage IEC1500V/UL1500V
 *Considering I.D. the power range of the certification authority.
 tolerance (Pmax) ±3%, (Voc) ±3%, (Isc) ±4%
 Electrical Rating At STC AM=1.5 IRRADIANCE=1000W/m² Temp =25°C
 For field connections, use minimum 4mm² (No. 12AWG) copper wires insulated for a minimum 90°C



WARNING-ELECTRICAL HAZARD
 This module produces electricity when exposed to light.
 Follow all applicable electrical safety precautions.

- Module Fire resistance rating Class C (for CSA C22.2 No.61730) and module fire performance Type 1 for UL61730
- System Fire Class Rating: See Installation Instructions for Installation Requirements to Achieve a Specified System Fire Class Rating with this Product (Classe nominale du système contre l'incendie - Voir les instructions d'installation)
- See module literature for appropriate mating connectors (Voir la documentation du module concernant les connecteurs appropriés)

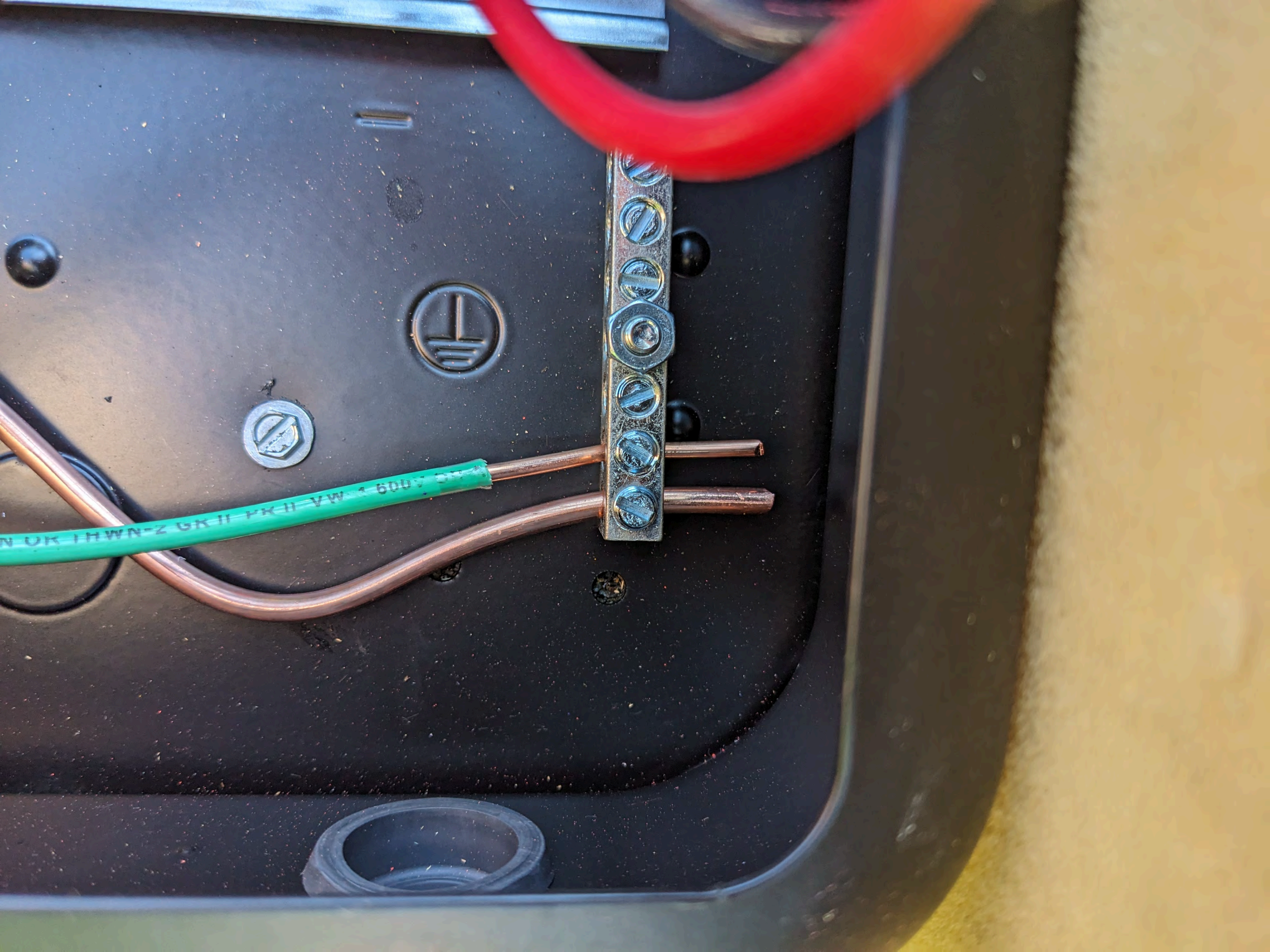


Photovoltaic
 Module over 800 volts
 E308515
 Standard No. UL 61730
 CSA C22.2 No. 61730

www.trinasolar.com
 Assembled in Vietnam

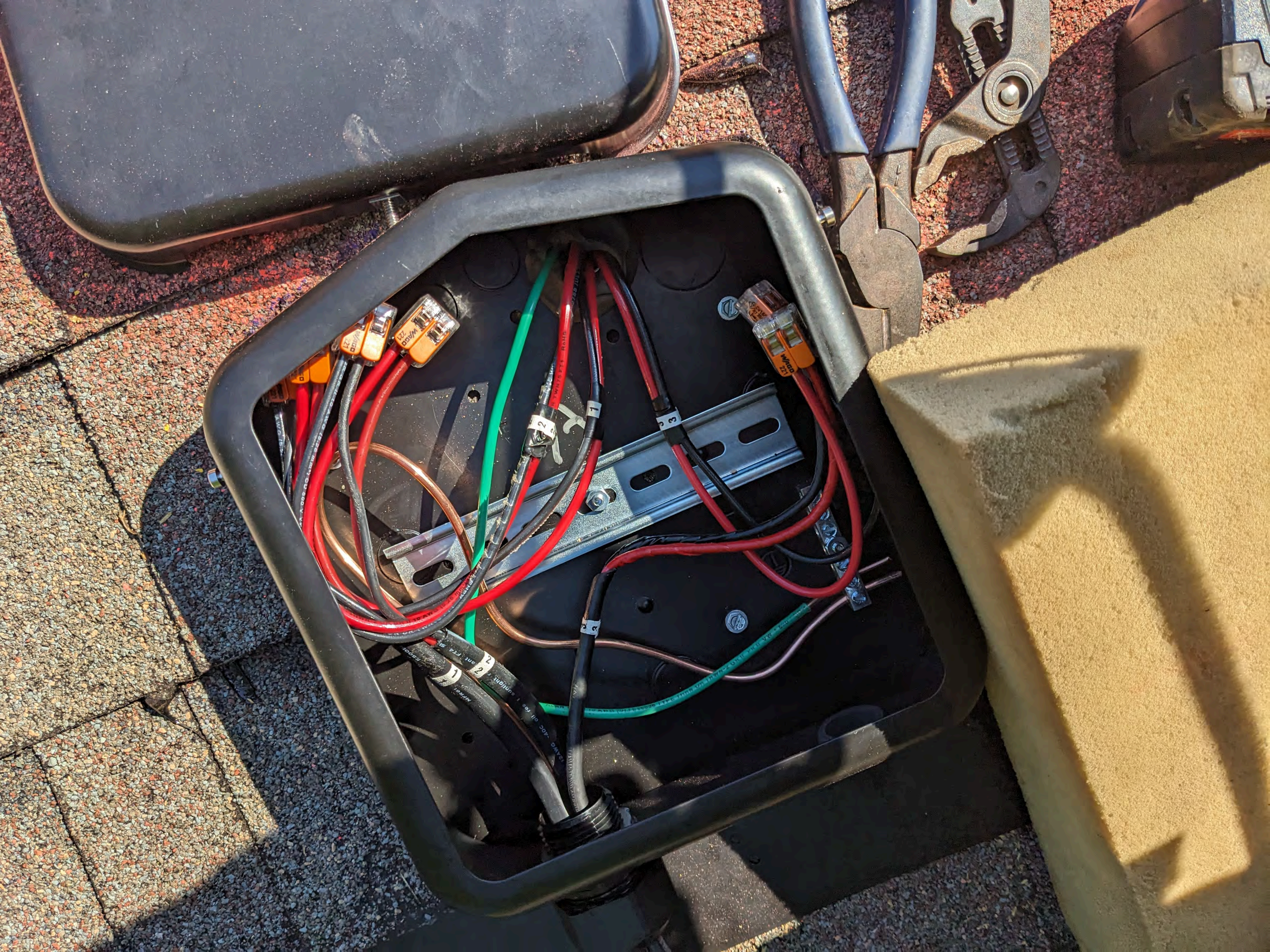
RoHS COMPLIANT





N UK IHWN-Z GK II PK II VW 1 600V







SOLADECK

Photovoltaic Combiner/Enclosure Conforms to UL 1741; Certified to CSA C22.2 No. 290; Nema Type 3R
www.rstcenterprises.com



Max Ratings: 600 VDC/115 AMPS; 240 VAC/60 AMPS; Short-circuit 10KA, Ambient Temp 75°C

WARNING

RISK OF ELECTRICAL SHOCK. KEEP OUT!
PERSONNEL ALLOWED ACCESS. SUITABLE FOR
FIELD/PHOTOVOLTAIC USE. APPROVED FOR USE WITH
ALLOWABLE INSTALLED CONDUCTORS SIZED FOR AN
CIRCUIT DISCONNECTING MEANS SHALL BE PROVIDED
WHEN REQUIRED BY THE CANADIAN ELECTRICAL CODE.
CAUTION: BEFORE SERVICING FUSES, DISCONNECT ALL
PHOTOVOLTAIC INPUTS AND OUTPUT CIRCUITS.
WARNING: MORE THAN ONE LIVE CIRCUIT. SEE DIAGRAM.
PLEASE CONSULT PAGE 4 OF MANUAL FOR COMBINER
COMPONENT AND KIT RATINGS.

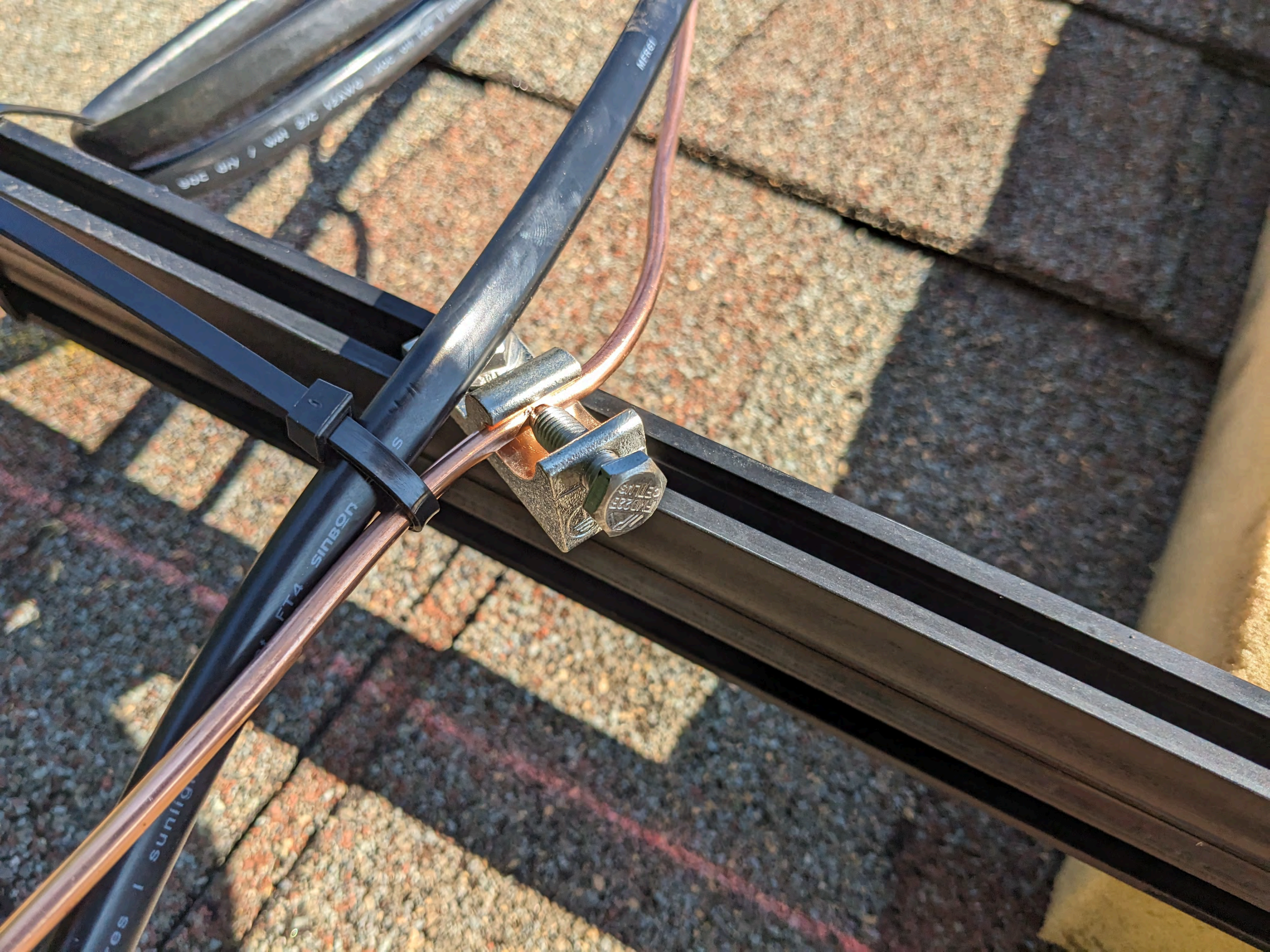
AVERTISSEMENT

HAUTE TENSION, GARDEZ À L'ÉCART! RISQUE DE CHOC
ÉLECTRIQUE. SEUL LE PERSONNEL DE SERVICE FORMÉ A
AUTORISÉ L'ACCÈS. CONVIENT À UNE UTILISATION AVEC
PHOTOVOLTAÏQUE. APPROUVÉ POUR LE TERRAIN
DES CONDUCTEURS INSTALLÉS POUR LE CIRCUIT DE
DIMENSIONNÉS POUR UNE CAPACITÉ ADMISSIBLE DE
90 °C. UN MOYEN DE DÉCONNEXION DU CIRCUIT DE
SORTIE EXTERNE DOIT ÊTRE FOURNI LORSQUE LA PARTIE I
DU CODE CANADIEN DE L'ÉLECTRICITÉ L'EXIGE.
ATTENTION: AVANT D'ENTREtenir LES FUSIBLES,
DÉBRANCHEZ TOUTES LES ENTRÉES ET CIRCUITS DE
SORTIE PHOTOVOLTAÏQUES.
AVERTISSEMENT: PLUS D'UN CIRCUIT EN DIRECT. VOIR
DIAGRAMME.
VEUILLEZ CONSULTER LA PAGE 5 DU MANUEL POUR LES
ÉVALUATIONS DES COMPOSANTS ET DES KITS DE
COMBINAISON.

A

R.S.T.C. Enterprises
Patent No.





08E 0N 1 0W 026 12X10E 102 011 100 100

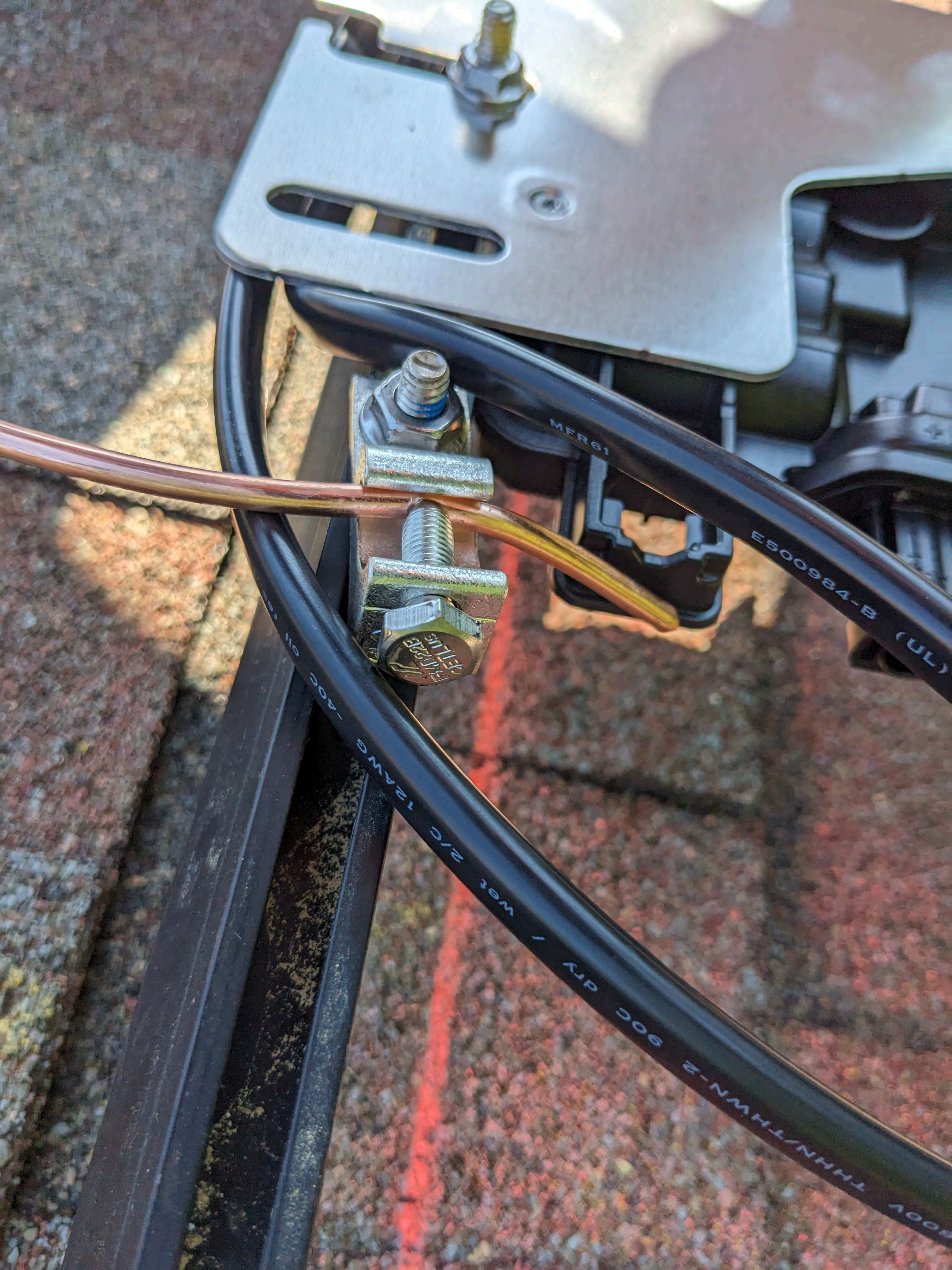
MFR81

FT4 SINBON

es | sunlig

08E 0N 1 0W 026 12X10E 102 011 100 100

SINBON
EGGONS



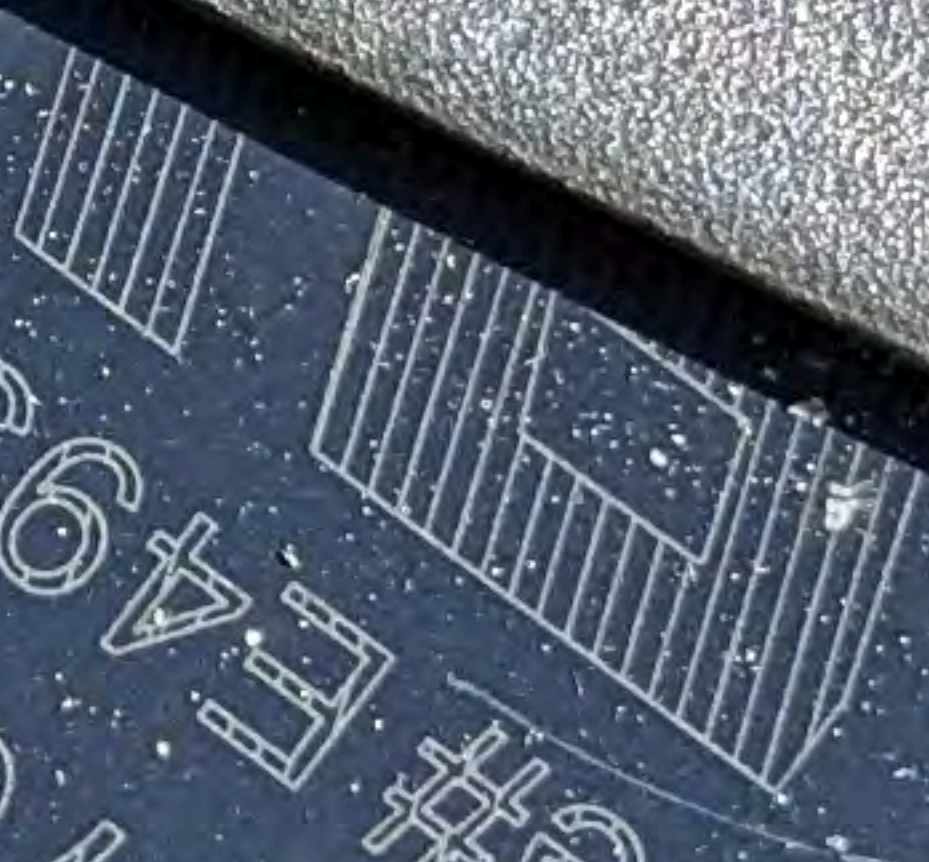
MFR 61

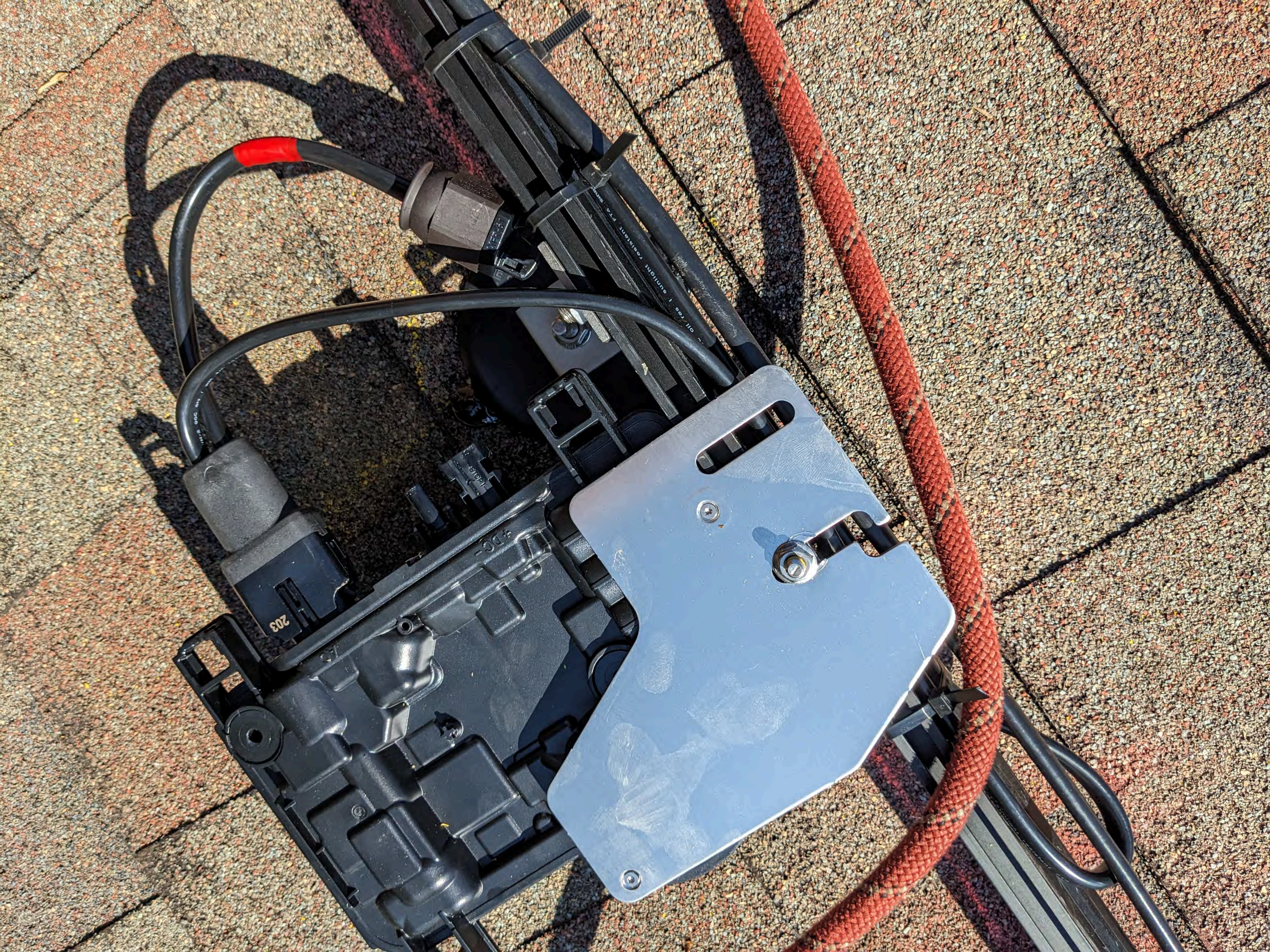
E500984-B (UL)

900V THHN/THWN-2 90C DRY / Wet 2/C 12AWG -40C



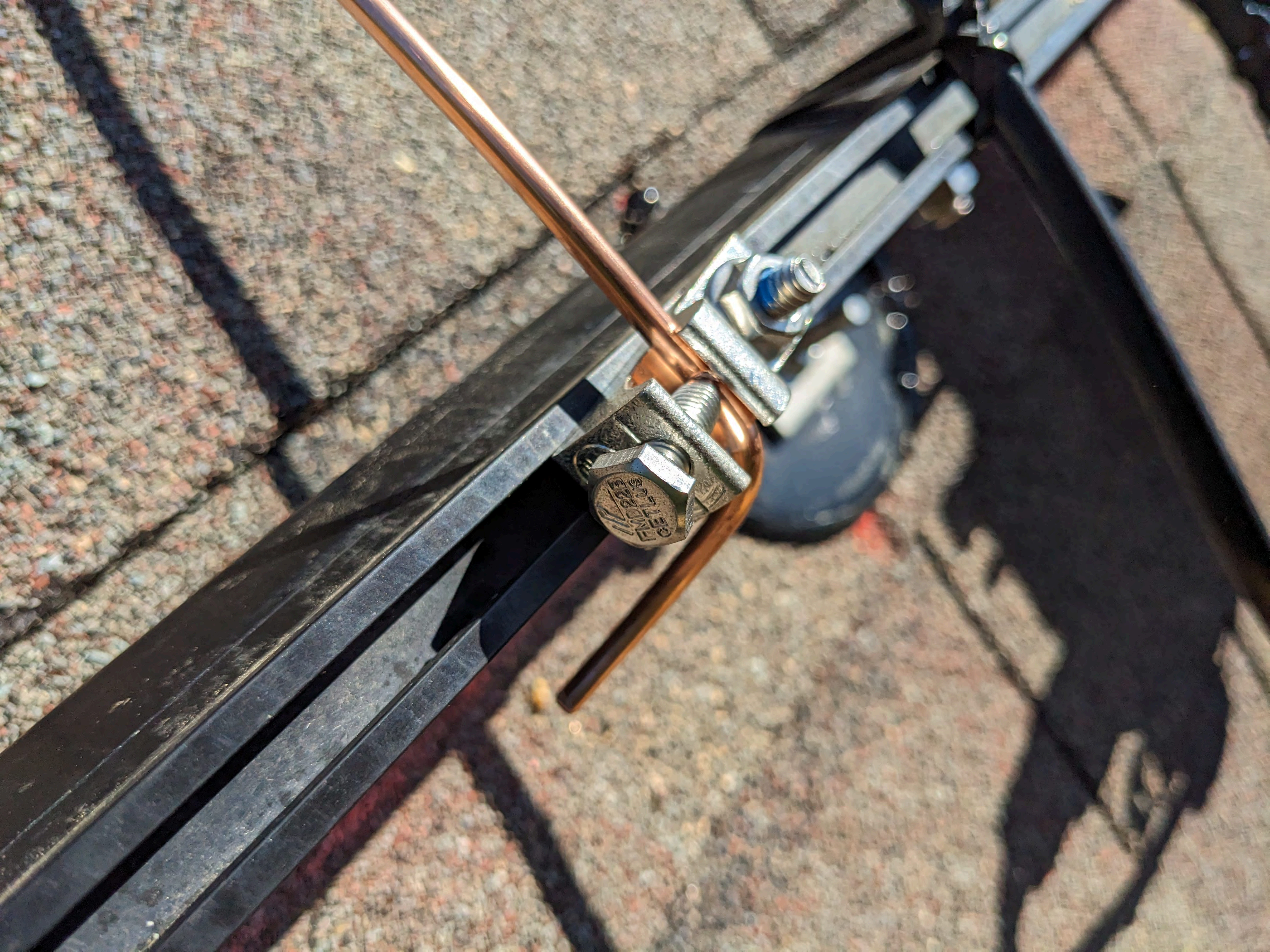
Quickscrews Int'l Corp
17659
File# E493748









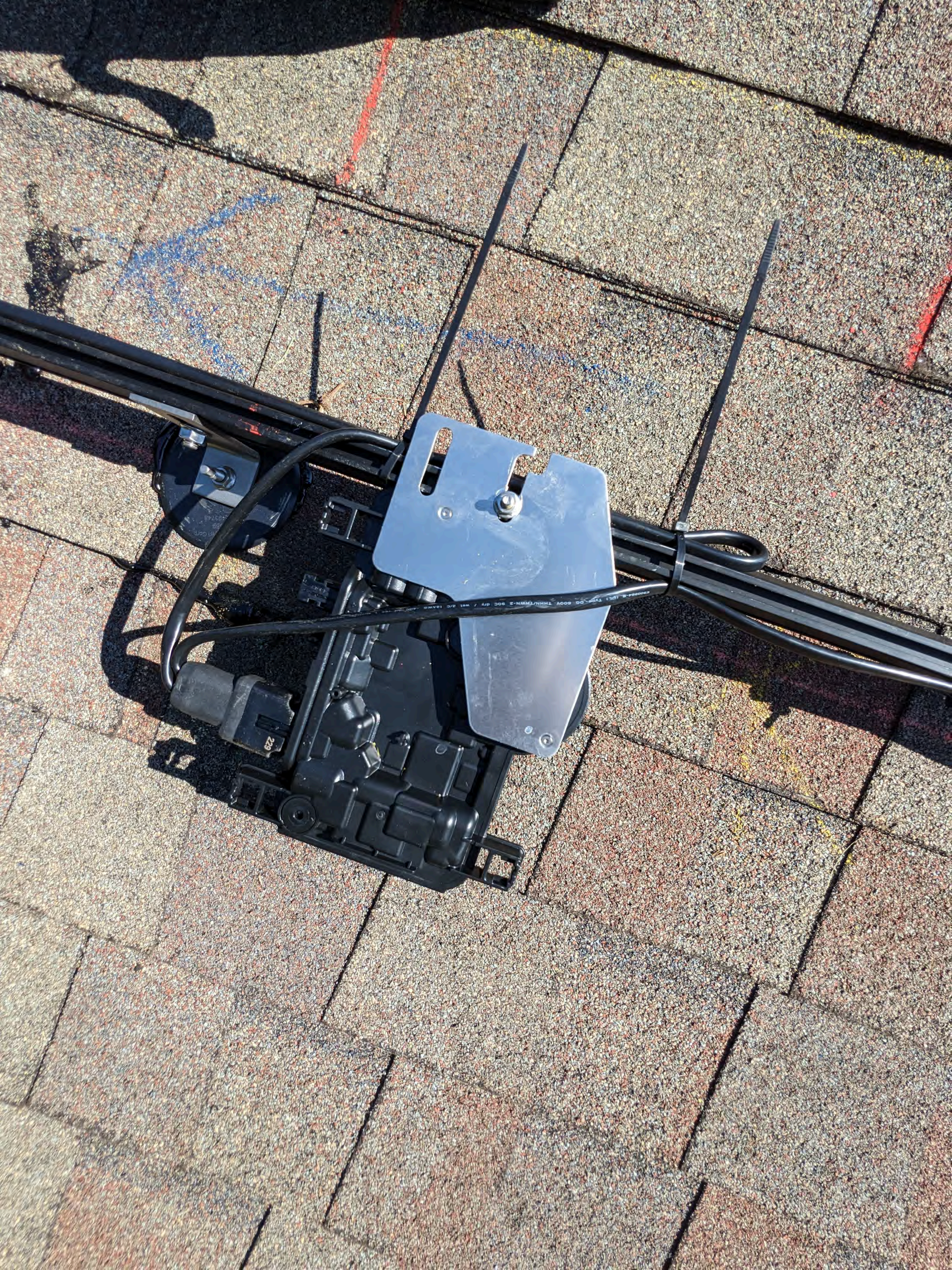




SA
F122B
GENIUS









108PLUS-72-M-US

685-01384 02 7972

482248

