

ENPHASE®

ENPHASE

CELLMODEM - M1 - 06 - SP - 05

Model number: 

861 - 00779

Part number:



01

Qty:



202308224000

Serial number:





Only certified manufacturers are allowed to use the Energy Star logo. The Energy Star logo is a mark of certification. It is not a guarantee of the system. Some states may have additional requirements for energy efficient products.

All LEDs

- Energy Star certified LEDs are required in all programs.
- Energy Star certified LEDs are required in all programs.

On Power IQ, LED's are required to be energy efficient. LED's are required to be energy efficient for all programs. For more information, please contact your local distributor.



ENPHASE.

IQ Combiner 4

Photovoltaic
Combiner Box

XZ-IQ-AM1-240-4

IEEE1547-2018 COMPLIANT



Electrical ratings

Voltage 240VAC, 60Hz
 DG Breakers 80A MPO (maximum)
 DG Inputs 64A MAX (combined)
 Output 63A MAX, 90A MAX (with OCPD)
 Temperature 40°C MAX ambient
 For DG breaker, use only Eaton BR series.



202319104177



202319104177

PIN



883-00353-15

Dedicated solar and DG Combiner Box - do not install loads
 10 AMP or 15 AMP IQ Gateway. Never use for backfeed.

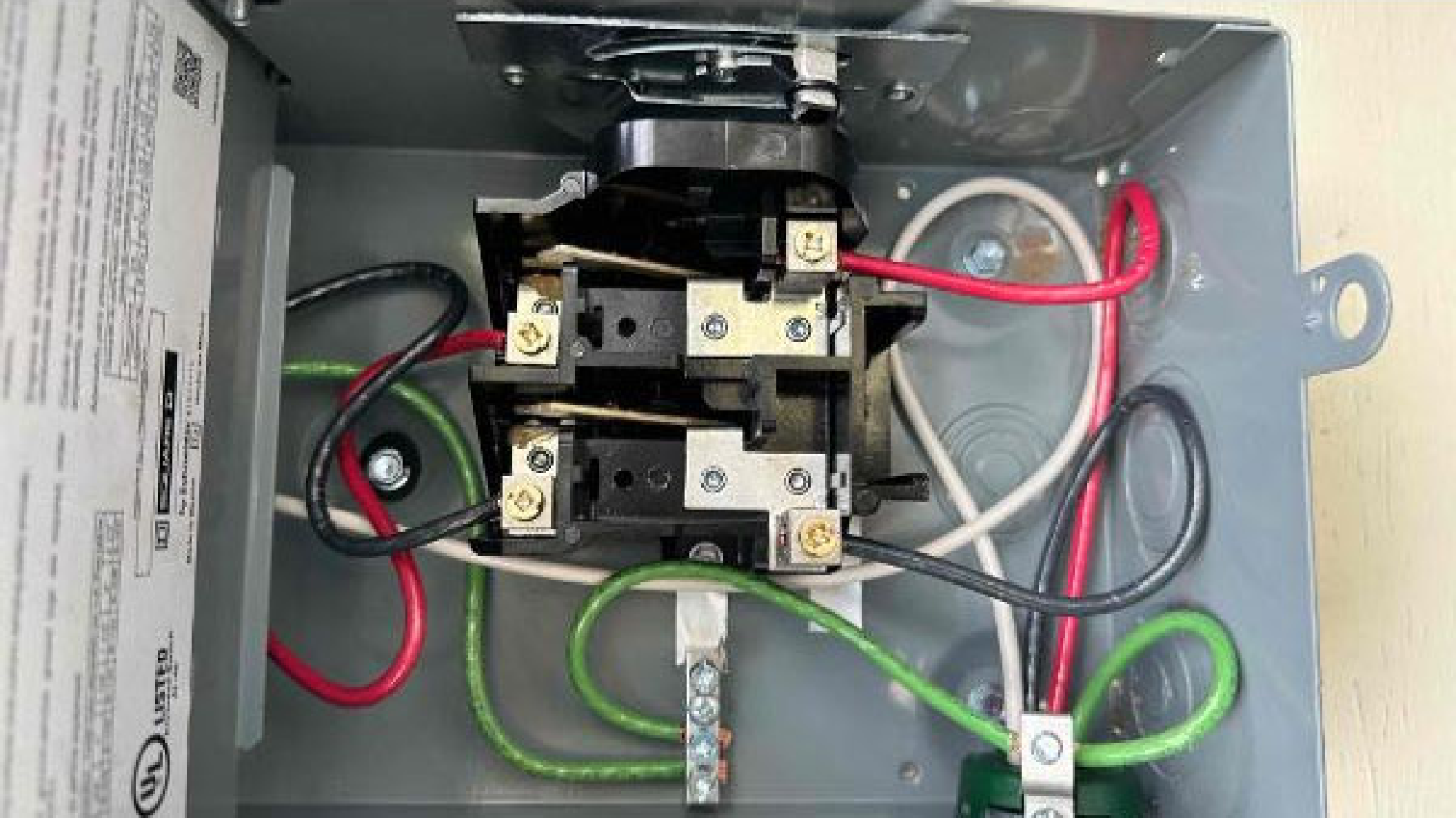
Connection	Wire sizes	Torque	
DG breaker (1, 2, 3, 4)	14-10 AWG	2.2 Nm (20 lb-in)	
	8 AWG	2.8 Nm (25 lb-in)	
	6-4 AWG	3.0 Nm (27 lb-in)	
60A Circuit Breaker only	4-1/0 AWG	5.0 Nm (45 lb-in)	
	14-10 AWG	2.26 Nm (20 lb-in)	
IQ Gateway Breaker	2-1/0 AWG	5.0 Nm (45 lb-in)	
	14-3 AWG	5.1 Nm (45 lb-in)	
Neutral and ground	Large screw	3.6 Nm (32 lb-in)	
	Small screw	6 AWG	2.6 Nm (23 lb-in)
		10-14 AWG	2.3 Nm (20 lb-in)
Main bus	10-4 AWG	5.0 Nm (45 lb-in)	
	3-2/0 AWG	5.6 Nm (50 lb-in)	

Copper conductors only, rated min. 75°C.

Follow NFPA 70 (NEC), or CSA C22.1 part 1, and all local codes.

For DG Breakers larger than 20A, use wire insulated for 90°C based on 75°C ampacity.

Designed in California and New Zealand
 Made in Mexico









PHOTOVOLTAIC SYSTEM
AC DISCONNECT

WARNING
DUAL POWER SUPPLY

ELECTRIC SHOCK HAZARD
DO NOT TOUCH TERMINALS
TERMINALS ON THIS DEVICE ARE LIVE WHEN
MAY BE ENERGIZED IN THE OPEN POSITION

OPERATING VOLTAGE 240V VOLTS
OPERATING CURRENT 20A AMPS

WARNING

THIS EQUIPMENT FED BY MULTIPLE
SOURCES. TOTAL RATINGS OF ALL
OVERCURRENT DEVICES, EXCLUDING
MAIN SUPPLY OVERCURRENT
DEVICE, SHALL NOT EXCEED
CAPACITY OF BUSBAR.

WARNING

PHOTOVOLTAIC SYSTEM
COMBINER PANEL

DO NOT ADD LOADS

WARNING
THIS EQUIPMENT IS FED BY MULTIPLE AC
POWER SOURCES. TOTAL RATINGS OF ALL
OVERCURRENT DEVICES, EXCLUDING
MAIN SUPPLY OVERCURRENT DEVICE,
SHALL NOT EXCEED CAPACITY OF THE
BUSBAR. THIS PANEL IS NOT TO BE
USED AS A LOAD CENTER.



PLEASE DO NOT OPEN THIS UNIT WITHOUT THE PROPER TRAINING AND AUTHORITY. THE PROPER TRAINING AND AUTHORITY IS REQUIRED TO OPEN THIS UNIT. THE PROPER TRAINING AND AUTHORITY IS REQUIRED TO OPEN THIS UNIT.

008.800

Circuit 1

20	20
On/Off	On/Off



WARNING
WIRE TO GATEWAY LABELS TO
ADJUST BATTERY VOLTAGE FOR
FOR GATEWAY SYSTEMS
- INSTRUCTIONS IN Q1

15	15
On/Off	On/Off

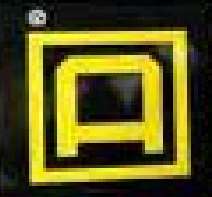
Circuit 2

20	20
On/Off	On/Off



EXPLOSION PROTECTIVE COVER

RAPID SHUTDOWN SWITCH FOR SOLAR PV SYSTEM



SQUARE D®

GENERAL DUTY SAFETY SWITCH
INTERRUPTOR DE SEGURIDAD DE SERVICIO GENERAL

30 A
 240 V ac / V-



⚠ DANGER / PELIGRO

HAZARD OF ELECTRIC SHOCK, DOWNED OR ARC FLASH / PELIGRO DE DESCARGA ELÉCTRICA, COMUSIÓN O RESQUELLO POR ARQUEO

Always deenergize electrical conductors, equipment, panels and boxes with lockout/tagout (LOTO) procedures before working on them. This equipment must only be installed and serviced by qualified electrical personnel. Follow the instructions in the instructions manual. Turn off main building disconnect or main service disconnect before working on this equipment. Always use appropriate safety practices. Turn off main building disconnect or main service disconnect before working on this equipment. Always use appropriate safety practices. Turn off main building disconnect or main service disconnect before working on this equipment. Always use appropriate safety practices.

⚠ AC DISCONNECT
PHOTOVOLTAIC SYSTEM
 RATED AC OUTPUT CURRENT

⚠ WARNING
 POWER TO THIS BUILDING IS ALSO SUPPLIED FROM MAIN DISTRIBUTION UTILITY DISCONNECT LOCATED Inside Shed

⚠ WARNING
ELECTRIC SHOCK HAZARD
 TERMINALS ON THE LINE AND LOAD SIDES MAY BE ENERGIZED IN THE OPEN POSITION

WARNING

DUAL POWER SUPPLY

**SOURCES: UTILITY GRID AND
PV SOLAR ELECTRIC SYSTEM**





WARNING
DO NOT TOUCH
INTERNAL COMPONENTS
OR WIRING

works / board 1000
as x Galaxy Board
chassis
...
...

PHOTOVOLTAIC SYSTEM
AC DISCONNECT
WARNING
DANGER TO LIFE & LIMB
ELECTRICAL SHOCK HAZARD
DO NOT TOUCH
TERMINALS OR
WIRING

**SOLAR PV SYSTEM EQUIPPED
WITH RAPID SHUTDOWN**
TURN MAIN SWITCH OFF
BEFORE THE
"OFF" POSITION TO
SHUT DOWN PV SYSTEM
AND REMOVE
POWER MAILED
IN THE CABINET



WARNING
DANGER TO LIFE & LIMB
ELECTRICAL SHOCK HAZARD
DO NOT TOUCH
TERMINALS OR
WIRING

Model
AC

Model
AC

Model
AC



WARNING
ELECTRIC SHOCK HAZARD
TERMINALS ON THE LINE AND
LOAD SIDES MAY BE ENERGIZED
IN THE OPEN POSITION





Honeywell

75° 69°
Cooling

Fan



Auto On

System



Cool Off Heat Em. Heat

LEVEL
HERE

LEVEL
HERE

50013270-002

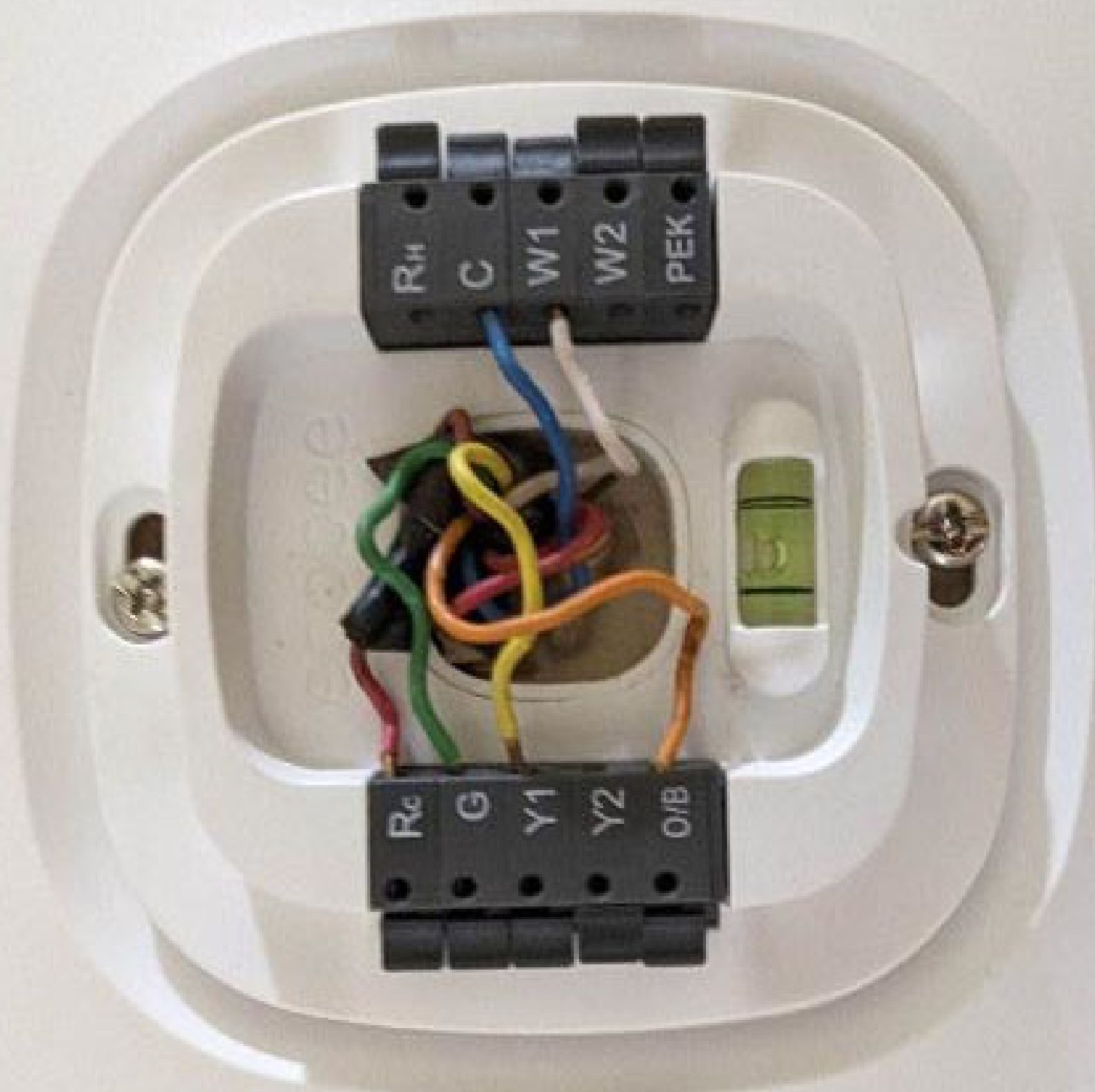


<http://youfromhome.honeywell.com>
1-800-664-1552

C IS OPTIONAL
WITH BATTERIES



E AUX Y G O L R B C



R_H C W1 W2 PEK

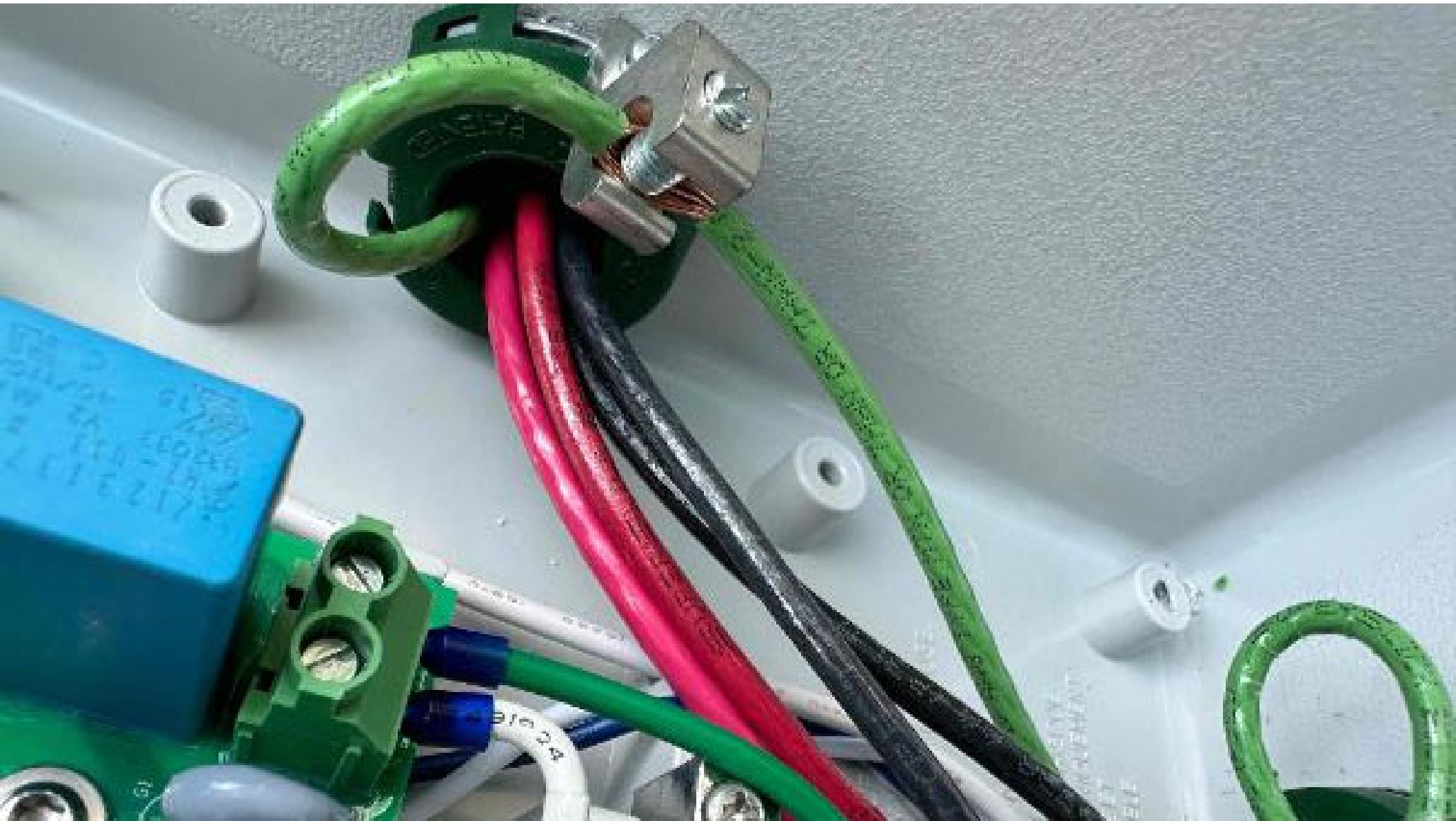
R_c G Y1 Y2 O/B

50000

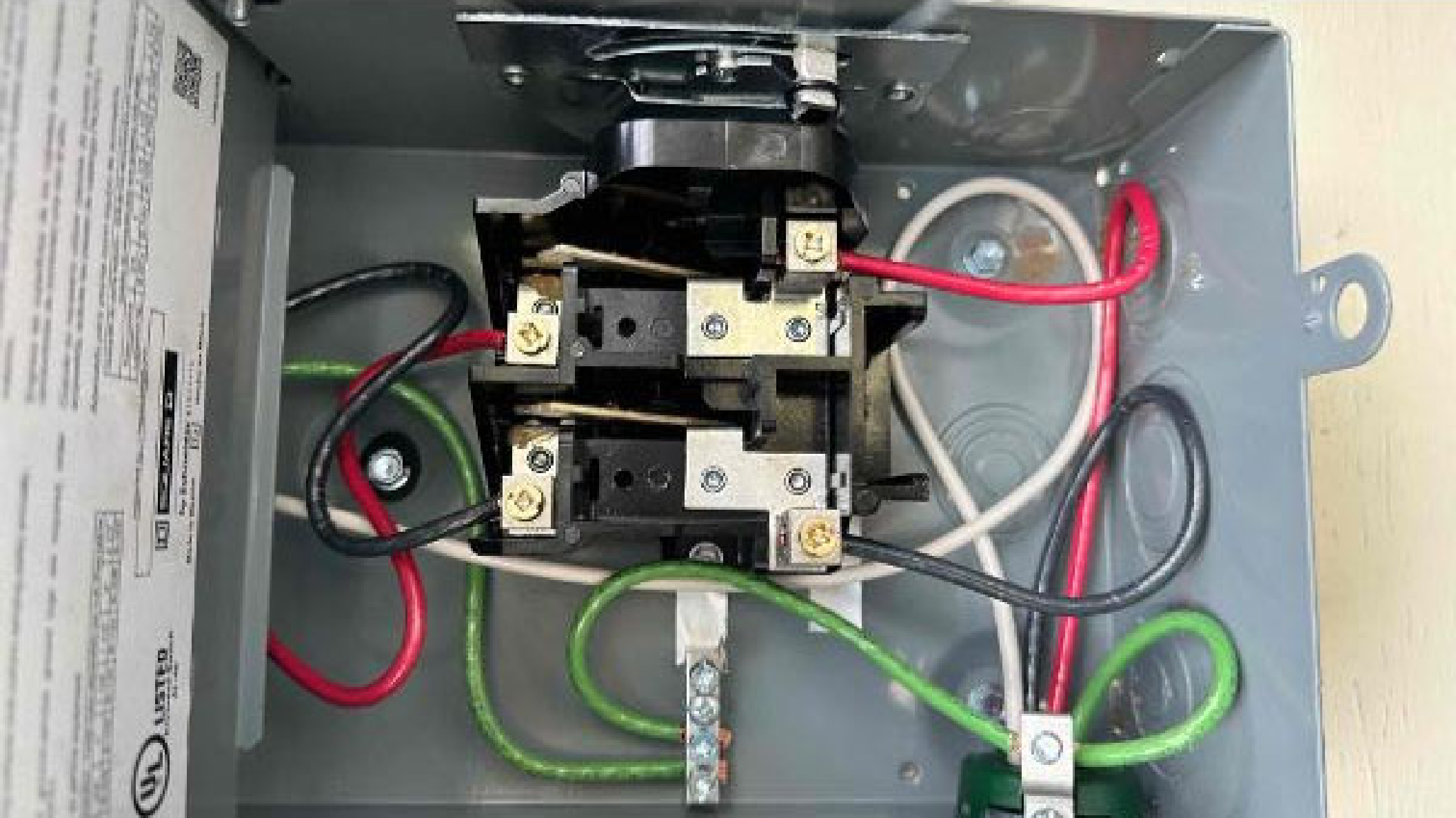
5

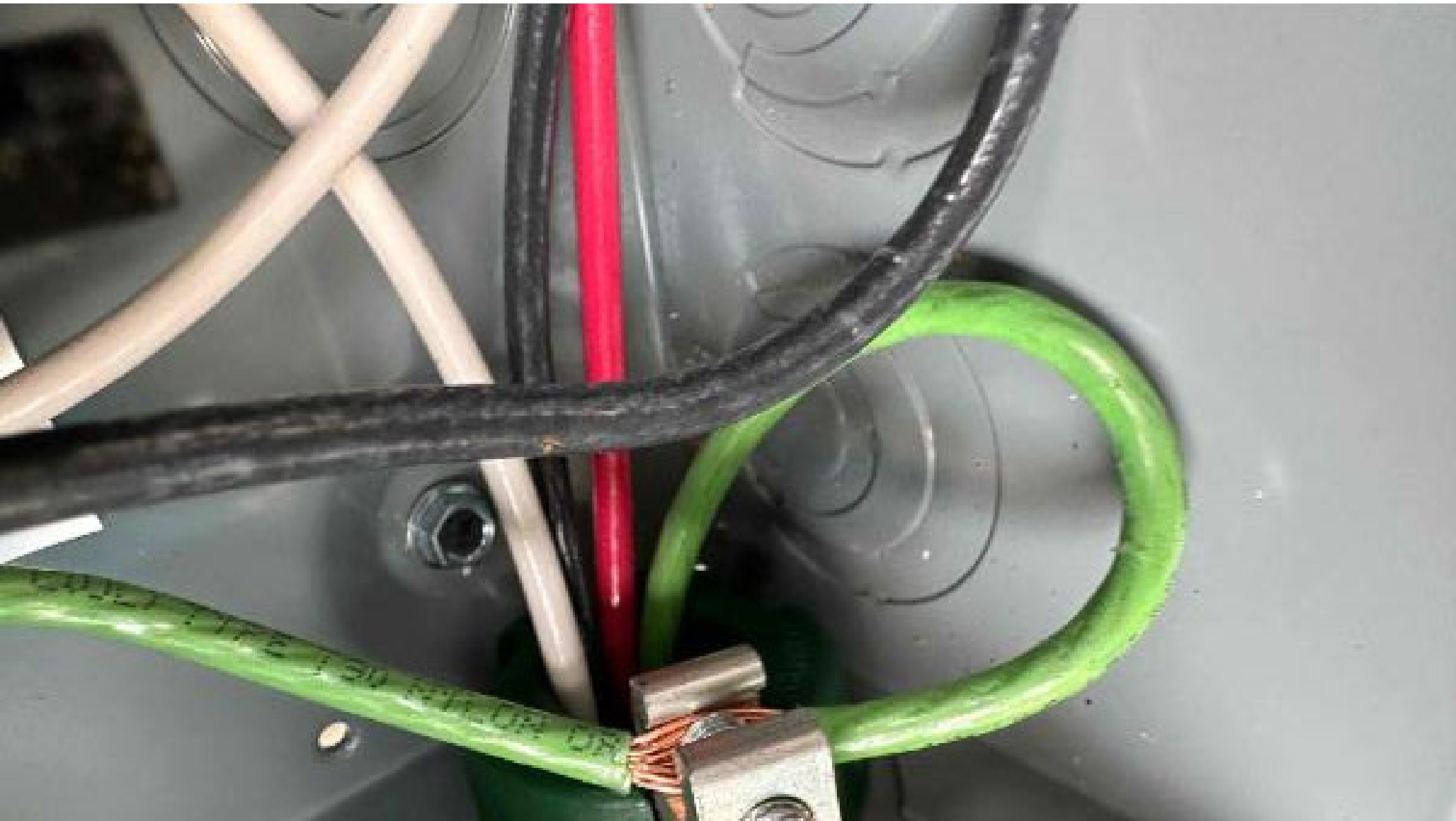














AL-45

Made in Mexico

73

HECHO EN MEXICO

← Devices & Array



Connected to IQ Gateway ...104177

Note: The PV production values are typically updated every ~5 mins.

IQ GATEWAY 1

IQ Gateway

2023/10/10 17:17

IQ Microinverters & Array

- ✓ Scanned : 17/17
- ✓ Detected : 17/17
- ⊗ Communicating : 16/17
- ✓ Array created : 1
- ⊗ Producing power : 0/17
- ⊗ Profile set : 16/17 (IEEE 1547 default: 2015-1.0.11)

Please wait for grid profiles to propagate to all microinverters.

Add site notes and pictures

ADD DEVICES



Systems



Dashboard



Support



Menu

Device and Sync Status

Online 
Fully synced

Unsynced Items

Media 0

Project 0

Sync Settings

Sync on Wifi only

OFF

[Having trouble syncing?](#)



Acabo de hacer un video en el que explico cómo se relacionan los conceptos de energía y potencia. Espero que os sea útil. Si tenéis alguna duda, no dudéis en escribirme un comentario o una pregunta. Saludos.
 Can be used with most smart TVs. To activate, please visit the website.
 Apple Store
 Add-ons available
 Can be used with most smart TVs. To activate, please visit the website.

omnito

Rodrigo Casas E

↑ To change the text, click here ↓

	3	4	5	6
D				
E				
F				
G				
H				
I				
J				
K				
L				
M				

Comprova si el sistema de coordenades és correcte. És important que les dades siguin correctes. Si no ho és, pots canviar-les a través de l'opció "Editar dades".
 To make this a complete system, you need to have a coordinate system. It is important that the data is correct. If it is not, you can change it through the "Edit data" option.

↑ To change the text, click here ↓





Circuit 1

20 20

20 20

20 20

WARNING

ALSO CALL A WELL-QUALIFIED
ELECTRICIAN FOR
SCHEDULING AND TO
FOR MORE INFORMATION
SEE INSTRUCTIONS IN 2.0.

Circuit 2

20 20

20 20

20 20

Surge Protector

1 2 3

1. Read the instructions carefully before using the surge protector. The surge protector is designed to protect your equipment from power surges and lightning strikes. It is not intended to protect your equipment from fire or theft.

2. Plug the surge protector into a standard wall outlet. Do not plug the surge protector into an outlet that is already occupied by another surge protector or other electrical device.

3. Plug your equipment into the surge protector. Do not plug more than the maximum number of devices into the surge protector.

4. Do not use the surge protector if it shows signs of damage, such as frayed wires or a cracked case. If you notice any damage, stop using the surge protector immediately and contact the manufacturer for a replacement.

5. The surge protector should be replaced every 3 years, even if it has not been used. This is because the surge protector's internal components can degrade over time, even when not in use.

6. The surge protector is not a fireproof safe. It does not protect your equipment from fire or theft. For protection against fire and theft, use a fireproof safe.

1. Read the instructions carefully before using the surge protector. The surge protector is designed to protect your equipment from power surges and lightning strikes. It is not intended to protect your equipment from fire or theft.

2. Plug the surge protector into a standard wall outlet. Do not plug the surge protector into an outlet that is already occupied by another surge protector or other electrical device.

3. Plug your equipment into the surge protector. Do not plug more than the maximum number of devices into the surge protector.

4. Do not use the surge protector if it shows signs of damage, such as frayed wires or a cracked case. If you notice any damage, stop using the surge protector immediately and contact the manufacturer for a replacement.

5. The surge protector should be replaced every 3 years, even if it has not been used. This is because the surge protector's internal components can degrade over time, even when not in use.

6. The surge protector is not a fireproof safe. It does not protect your equipment from fire or theft. For protection against fire and theft, use a fireproof safe.

1. Read the instructions carefully before using the surge protector. The surge protector is designed to protect your equipment from power surges and lightning strikes. It is not intended to protect your equipment from fire or theft.

2. Plug the surge protector into a standard wall outlet. Do not plug the surge protector into an outlet that is already occupied by another surge protector or other electrical device.

3. Plug your equipment into the surge protector. Do not plug more than the maximum number of devices into the surge protector.

4. Do not use the surge protector if it shows signs of damage, such as frayed wires or a cracked case. If you notice any damage, stop using the surge protector immediately and contact the manufacturer for a replacement.

5. The surge protector should be replaced every 3 years, even if it has not been used. This is because the surge protector's internal components can degrade over time, even when not in use.

6. The surge protector is not a fireproof safe. It does not protect your equipment from fire or theft. For protection against fire and theft, use a fireproof safe.



Circuit 1

20 ON/OFF
20 ON/OFF

WARNING
ALSO CALL AVIATION TO
SYSTEM CONTROLLER FOR
800 460 4600 FOR
INSTRUCTIONS IN USE

Circuit 2

20 ON/OFF
20 ON/OFF

AVIATION

UNIVERSITY
UNIVERSITY OF CALIFORNIA, BERKELEY
AVIATION SYSTEMS

WARNING
CAUTION: This equipment contains a high-voltage capacitor. Before working on this equipment, disconnect the power and discharge the capacitor. Failure to do so could result in severe injury or death.



Additional text or instructions, possibly a warning or safety note, located below the photograph.



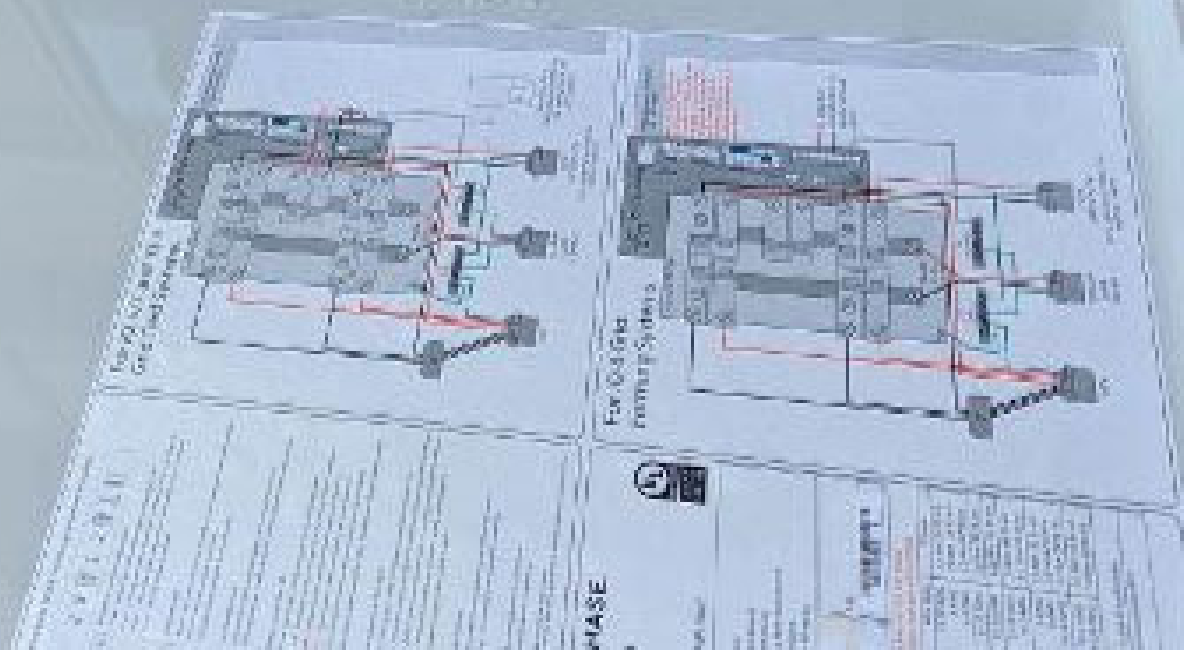
Capacitor



Capacitor



Capacitor





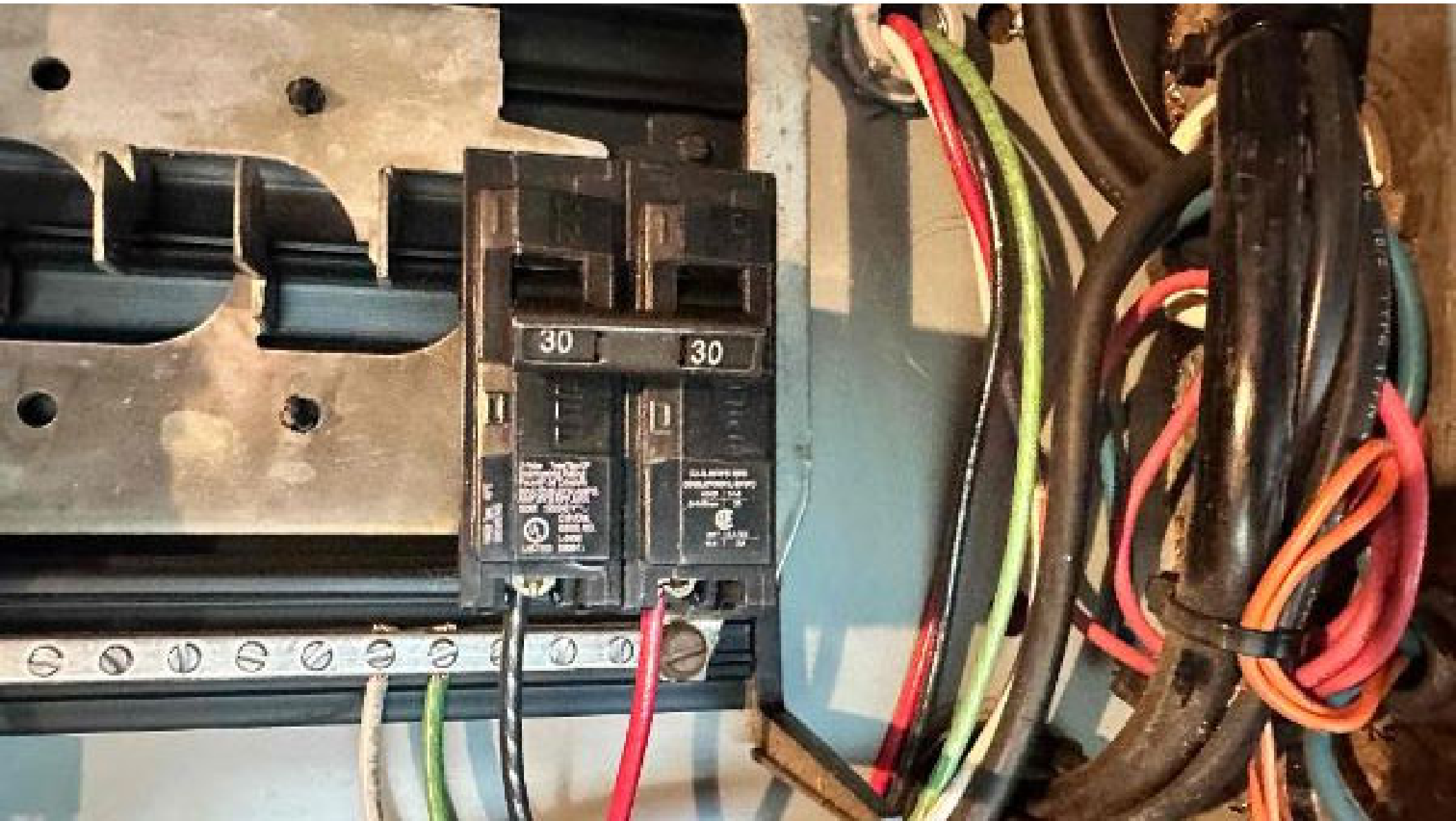
Hi there!

We will guide you through
the set-up process.

Let's get started >

ecobee







 **UNIRAC**[®]

BETTER SOLAR STARTS HERE

www.unirac.com



2 5 3 0 1 0 U

SFM SPLICE 6.5"

Pack Size: 10

WO/PO# :0045419-01

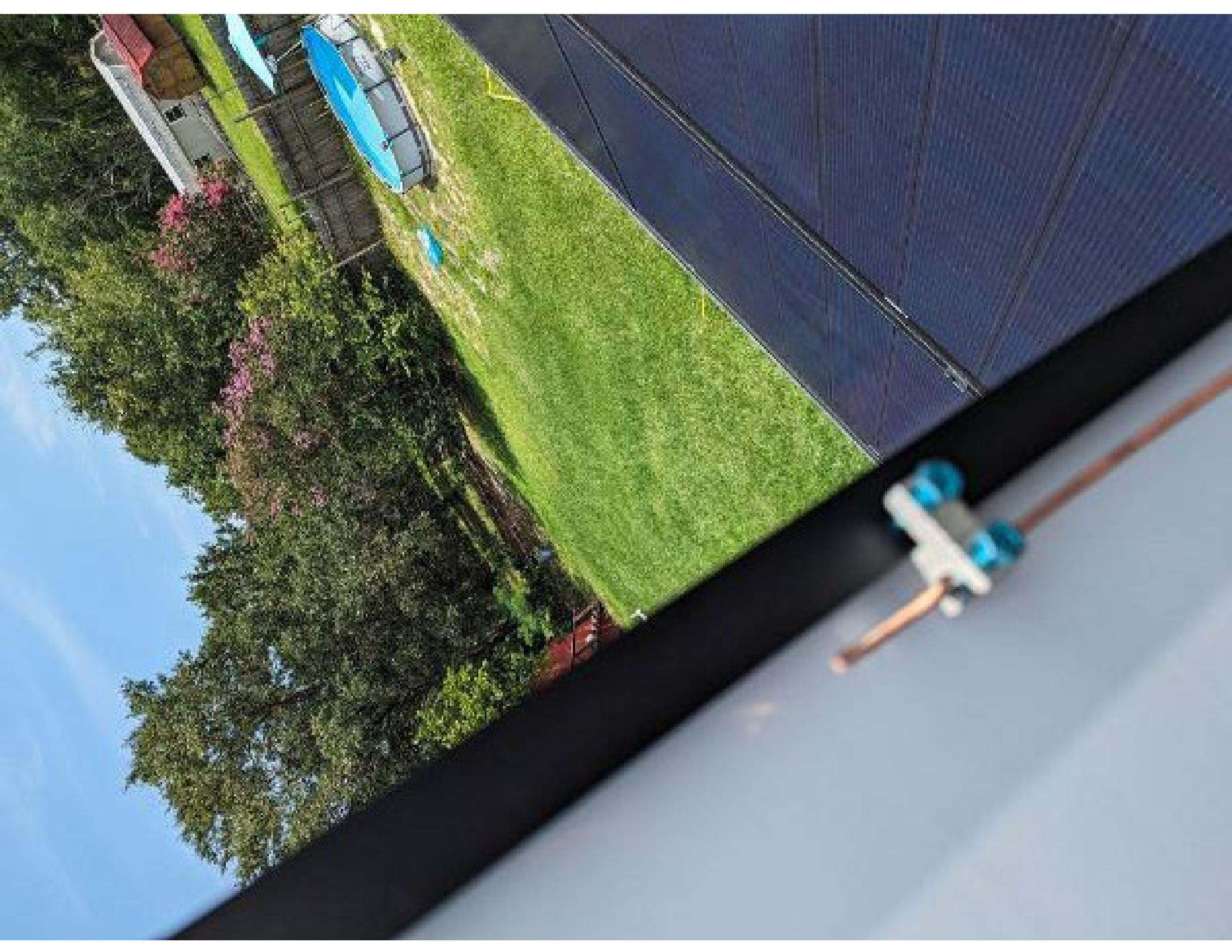
Manufacture date: 

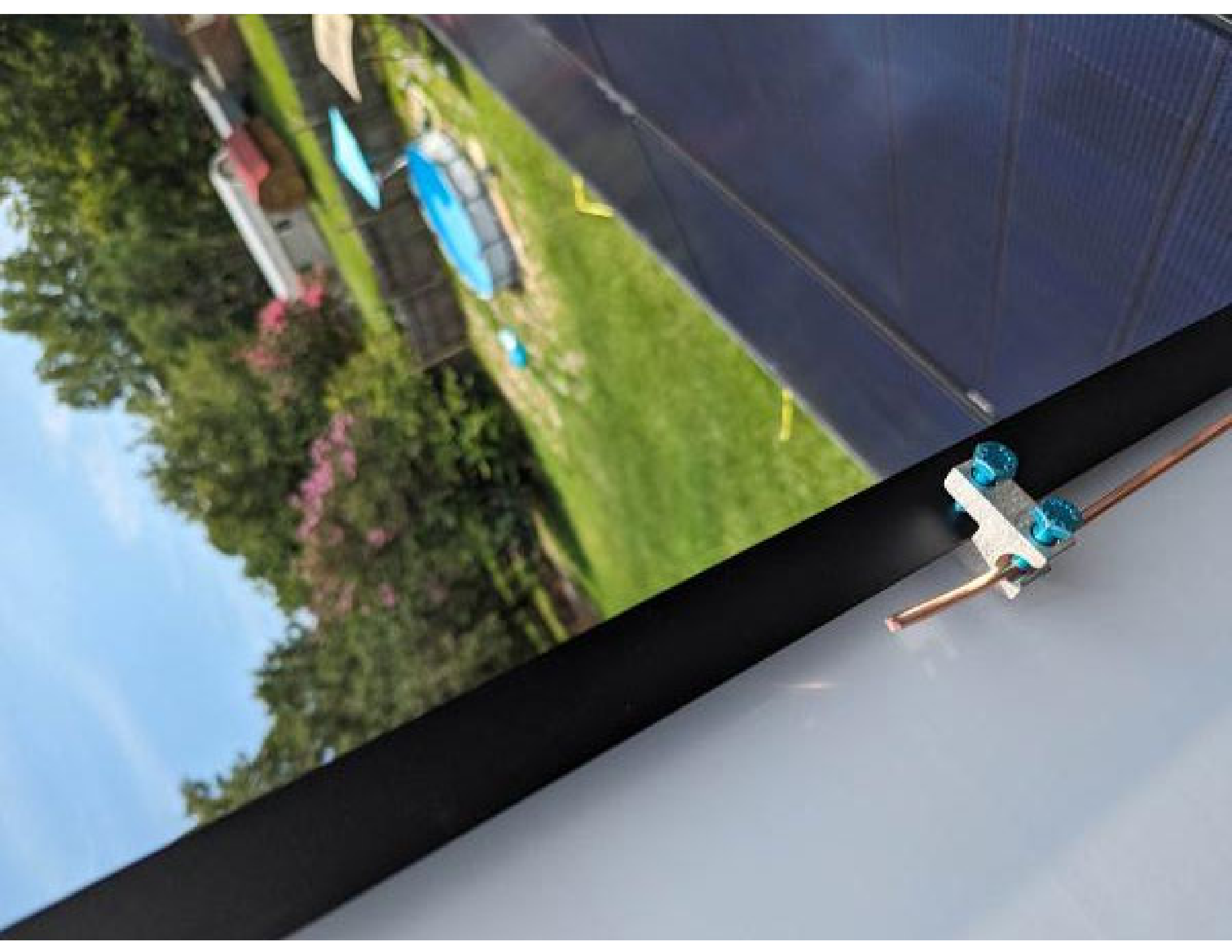
Factory Code : 010A

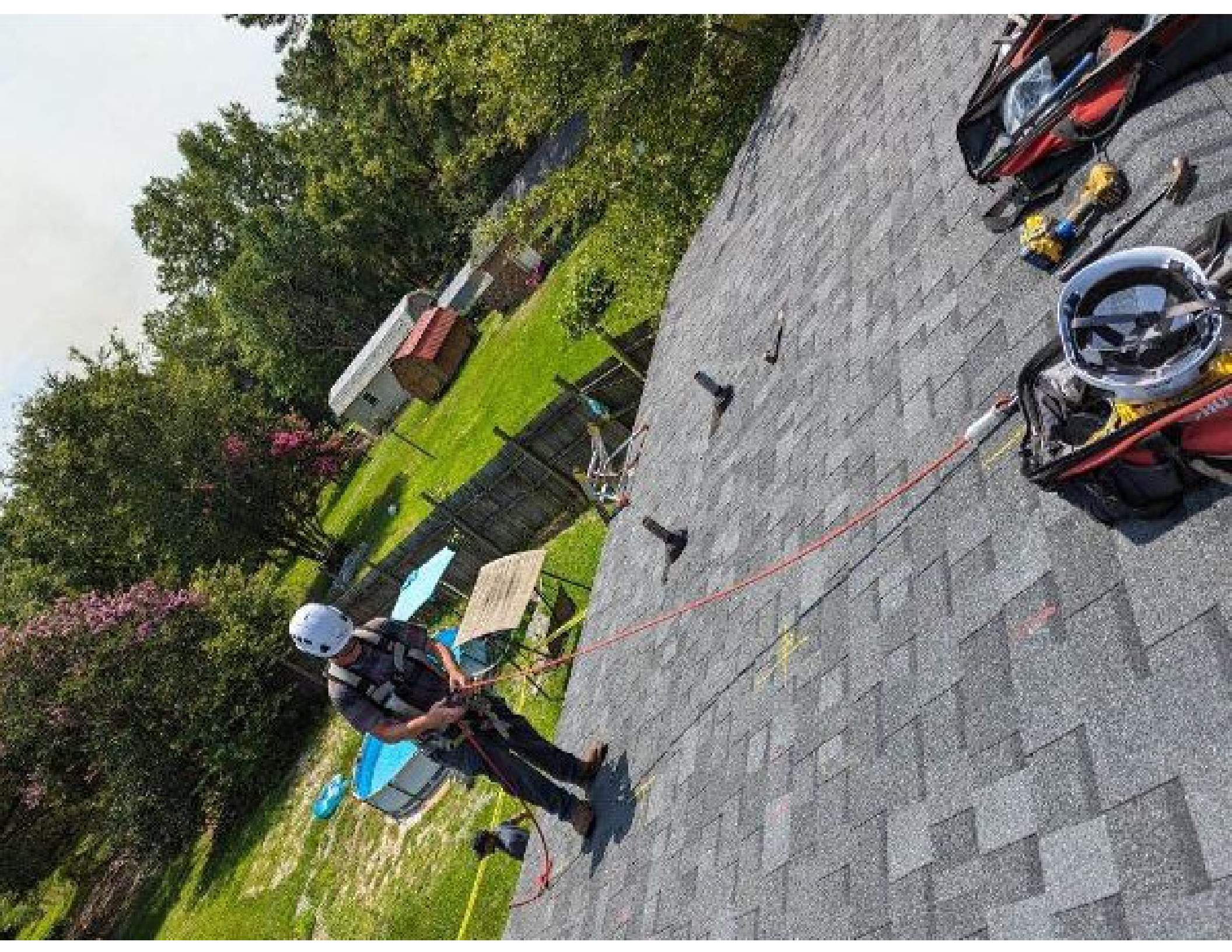


6 10039 36116 0









 **ENPHASE.**

IQ7X

IQ7X Grid Support Inverter
For Enphase smart inverters, refer to
<https://enphase.com/company/240000/>

- Maximum Output Power: 4.6kW
- DC input range: 25 - 75Vdc
- Maximum DC input current: 100A
- DC input combination: 4x4
- AC output voltage: 208/240V
- AC output current: 13/11.5A
- AC output frequency: 60Hz
- AC output power factor: 0.99 (min.) - 1.00
- Compliance: UL1741, IEEE 1547
- RoHS compliant: YES (EU RoHS)
- RoHS compliant: YES (US RoHS)
- UL ENEC CE CB CB21 CB23 CB24 CB25 CB26 CB27 CB28 CB29 CB30 CB31 CB32 CB33 CB34 CB35 CB36 CB37 CB38 CB39 CB40 CB41 CB42 CB43 CB44 CB45 CB46 CB47 CB48 CB49 CB50 CB51 CB52 CB53 CB54 CB55 CB56 CB57 CB58 CB59 CB60 CB61 CB62 CB63 CB64 CB65 CB66 CB67 CB68 CB69 CB70 CB71 CB72 CB73 CB74 CB75 CB76 CB77 CB78 CB79 CB80 CB81 CB82 CB83 CB84 CB85 CB86 CB87 CB88 CB89 CB90 CB91 CB92 CB93 CB94 CB95 CB96 CB97 CB98 CB99 CB100



This device complies with part 15 of the FCC Rules. Operation is subject to the following two conditions: (1) This device may not cause harmful interference. (2) This device must accept any interference received, including interference that may cause undesired operation.

CAUTION: RISK OF SEVERE INJURY OR DEATH IF CONTACTED WITH THE AC CIRCUITS. SYSTEMS ARE COMPLICATED AND MAY BE EMERGENCY. AC CIRCUITS SHOULD BE DEEMED LIVE. THE FOLLOWING INFORMATION IS FOR YOUR INFORMATION ONLY. IT IS NOT A SUBSTITUTE FOR THE ELECTRICAL CODES AND REGULATIONS. ALWAYS CONSULT WITH A LICENSED ELECTRICIAN BEFORE ANY WORK IS DONE ON THE SYSTEM. ALWAYS USE THE APPROPRIATE SAFETY PROCEDURES TO REDUCE THE RISK OF BURN, DO NOT TOUCH.

WARNING: ELECTRIC SHOCK HAZARD. DO NOT TOUCH THE AC CIRCUITS. SYSTEMS ARE COMPLICATED AND MAY BE EMERGENCY. AC CIRCUITS SHOULD BE DEEMED LIVE. THE FOLLOWING INFORMATION IS FOR YOUR INFORMATION ONLY. IT IS NOT A SUBSTITUTE FOR THE ELECTRICAL CODES AND REGULATIONS. ALWAYS CONSULT WITH A LICENSED ELECTRICIAN BEFORE ANY WORK IS DONE ON THE SYSTEM. ALWAYS USE THE APPROPRIATE SAFETY PROCEDURES TO REDUCE THE RISK OF BURN, DO NOT TOUCH.

ATTENTION: SEVERE INJURY OR DEATH IF CONTACTED WITH THE AC CIRCUITS. SYSTEMS ARE COMPLICATED AND MAY BE EMERGENCY. AC CIRCUITS SHOULD BE DEEMED LIVE. THE FOLLOWING INFORMATION IS FOR YOUR INFORMATION ONLY. IT IS NOT A SUBSTITUTE FOR THE ELECTRICAL CODES AND REGULATIONS. ALWAYS CONSULT WITH A LICENSED ELECTRICIAN BEFORE ANY WORK IS DONE ON THE SYSTEM. ALWAYS USE THE APPROPRIATE SAFETY PROCEDURES TO REDUCE THE RISK OF BURN, DO NOT TOUCH.









REC Alpha Pure-R Series
REC4200A Pure-R
 Serial Number: **FBB-700501AA07**

Phone: +91 9448-8208
 www.recgroup.com

Power Output (Pmax)

420 W

Weight Class Sorting

0+10 W

Power Production Tolerance

+/- 3 %

Rated Voltage (Vmppt)

50.0 V

Rated Current (Imppt)

8.40 A

Open Circuit Voltage (Voc) (+/- 3%)

59.4 V

Short Circuit Current (Isc) (+/- 3%)

6.88 A

Maximum System Voltage (Vsys)

1000 V

Maximum Series Fuse (DC) (UL)

25 A

Maximum Series Fuse (DC) (IEC)

25 A

Design Load

+4056 / -2666 Pa*

Maximum Test Load

+7000 / -4000 Pa*

*Measured at STC (1000 W/m² AM1.5, 25°C, 50% RH)

See installation manual for 1 year/30 year performance warranty
 or contact your dealer for details of product options and WPL



Approved by ETL
 Certified by UL
 Certified by CECC
 CECC No. 1700773



REC REC1000
 REC REC1500



Manufactured on: 14.04.2024



Warning: electrical hazard. This product produces electricity when exposed to light.

CAUTION: DO NOT DISCONNECT UNDER LOAD

Avertissement: Risque de choc électrique. Ce module génère de l'électricité lorsqu'il est exposé à la lumière.

ATTENTION: NE PAS DÉCONNECTER SOUS TENSION

For field connections, use only 4-core 15 AWG UL or similar insulated by a pair of wires

Made in Singapore by REC SOLAR PTE. LTD.

25 Years Solar Module 15.5mm x 660mm x 1000mm

Europe Contact REC Solar GmbH GmbH
 Bismarck 71a, 81541 Munich, Germany, Tel: +49 89 440 39911
 For other regions see: www.recgroup.com/regions











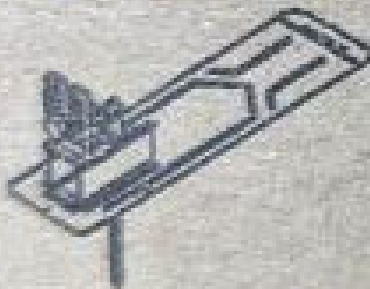
FLASHKIT SFM TRIM S

004201D

FLASHKIT SFM TRIM S COMP DARK

Pack Size: 10

Factory Code: 5-1



WO/PO# 0045215-00 Manufacture date: 12/20/21-1/20/22



6 10039 36212 9



FLASHKIT SFM SLIDERS

004271D

FLASHKIT SFM SLIDER S COMP DRK
DARK Pack Size : 10
Factory Code: 5-1



WOLPO# 0045416-00 Manufacture date: 2/10/22-4/10/22



8 10039 36213 6





Technical label on the white cabinet, including a barcode, CE USA marking, and safety symbols.





S Barreto APPROVED Permit Pack.pdf



<p>Diagram 1: Cross-section of well casing showing casing, annulus, and gravel pack.</p>	<p>Diagram 2: Plan view of well casing showing casing, annulus, and gravel pack.</p>	<p>Diagram 3: Cross-section of well casing showing casing, annulus, and gravel pack.</p>	<p>Official seal and stamp.</p>
------------------------------------------------------------------------------------------	--------------------------------------------------------------------------------------	------------------------------------------------------------------------------------------	---------------------------------

<p>Diagram 4: Cross-section of well casing showing casing, annulus, and gravel pack.</p>	<p>Diagram 5: Plan view of well casing showing casing, annulus, and gravel pack.</p>	<p>Photograph of well casing head with pressure gauge.</p>	<p>Photograph of well casing head with pressure gauge.</p>
------------------------------------------------------------------------------------------	--------------------------------------------------------------------------------------	------------------------------------------------------------	------------------------------------------------------------

<p>Table with 2 columns: Parameter, Value</p>	<p>Table with 2 columns: Parameter, Value</p>	<p>Table with 2 columns: Parameter, Value</p>	<p>Text description of well construction details.</p>	<p>Text description of well construction details.</p>
-----------------------------------------------	-----------------------------------------------	-----------------------------------------------	-------------------------------------------------------	-------------------------------------------------------

<p>Table with 2 columns: Parameter, Value</p>	<p>Table with 2 columns: Parameter, Value</p>	<p>Table with 2 columns: Parameter, Value</p>
-----------------------------------------------	-----------------------------------------------	-----------------------------------------------



AVE 360


GENERAL DUTY SAFETY SWITCH
INTERRUPTOR DE SEGURIDAD DE SERVICIO GENERAL
 20 A, 120 V AC, 1 P
 240 V Max. 1 P

⚠ DANGER / PELIGRO
 WARNING: To prevent electrical shock, always disconnect power before working on the switch.

⚠ PELIGRO
 Advertencia: Para evitar un choque eléctrico, siempre desconecte el poder antes de trabajar en el interruptor.

1. Location - High Voltage:
 This switch is designed for use in high voltage applications. It is not intended for use in low voltage applications.

2. Installation:
 The switch must be installed in a dry, well-ventilated area. It should be protected from moisture and dust.

3. Operation:
 The switch is operated by a single lever. The lever is labeled "ON" and "OFF". The switch is designed to be turned "OFF" in an emergency.

4. Maintenance:
 The switch should be inspected regularly for signs of wear and damage. It should be replaced if necessary.

5. Safety:
 Always use proper safety procedures when working with electrical equipment. Do not touch the switch when it is energized.

6. Warranty:
 The switch is warranted against defects in materials and workmanship for a period of one year.

7. Contact:
 For more information, please contact our customer service department at 1-800-555-1234.

8. Notes:
 This switch is not to be used for any purpose other than that intended.

9. Disposal:
 This switch should be disposed of properly according to local regulations.

10. Other:
 See the user manual for more information.

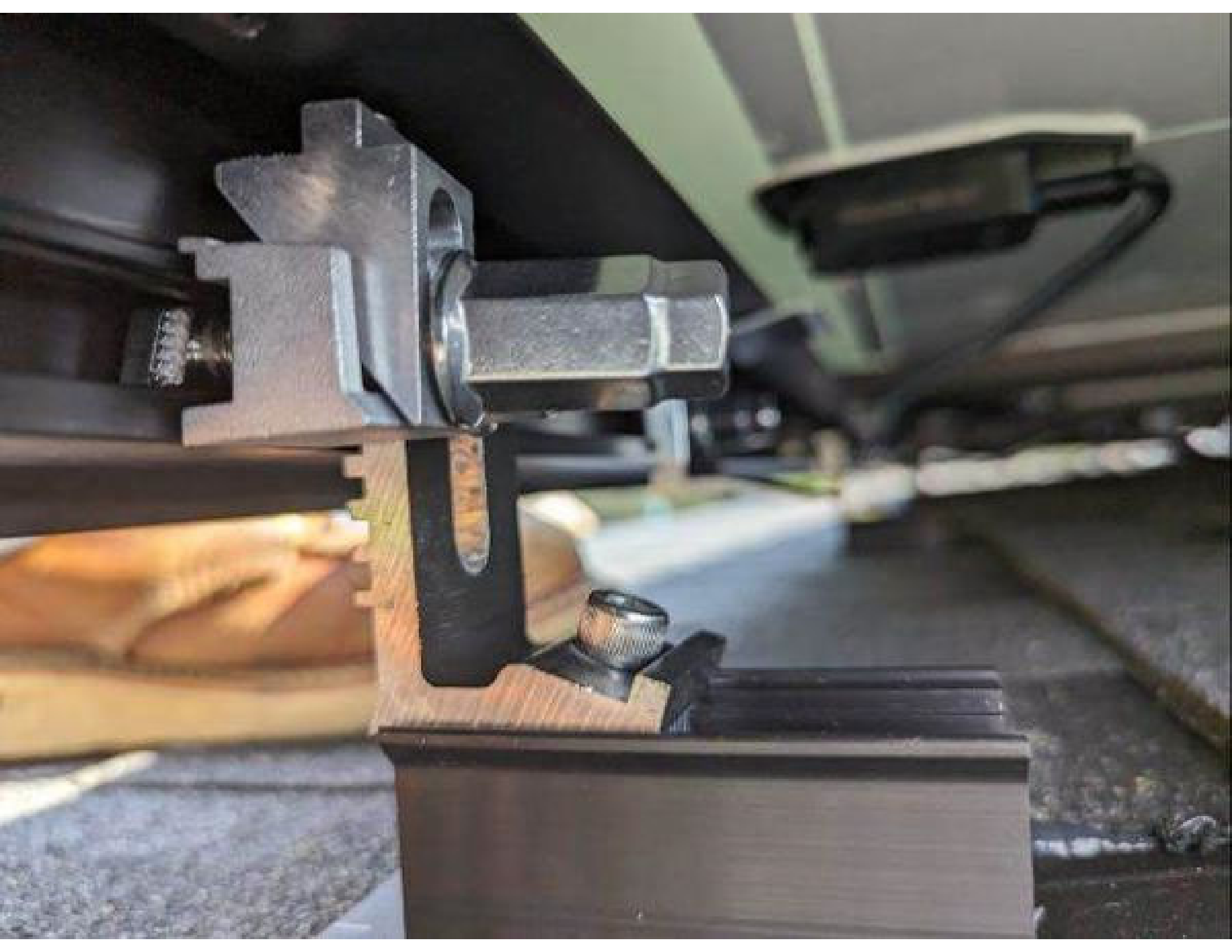
ON



OFF







UNIRAG SFM INFINITY RACKING
FOR MOUNTING AND GROUNDING SOLAR SYSTEMS

1-800-441-1703, 408-2703



1500VA
15A
120V
60Hz
UL

1000308-16
*79°C 2232

5714

UL 10090

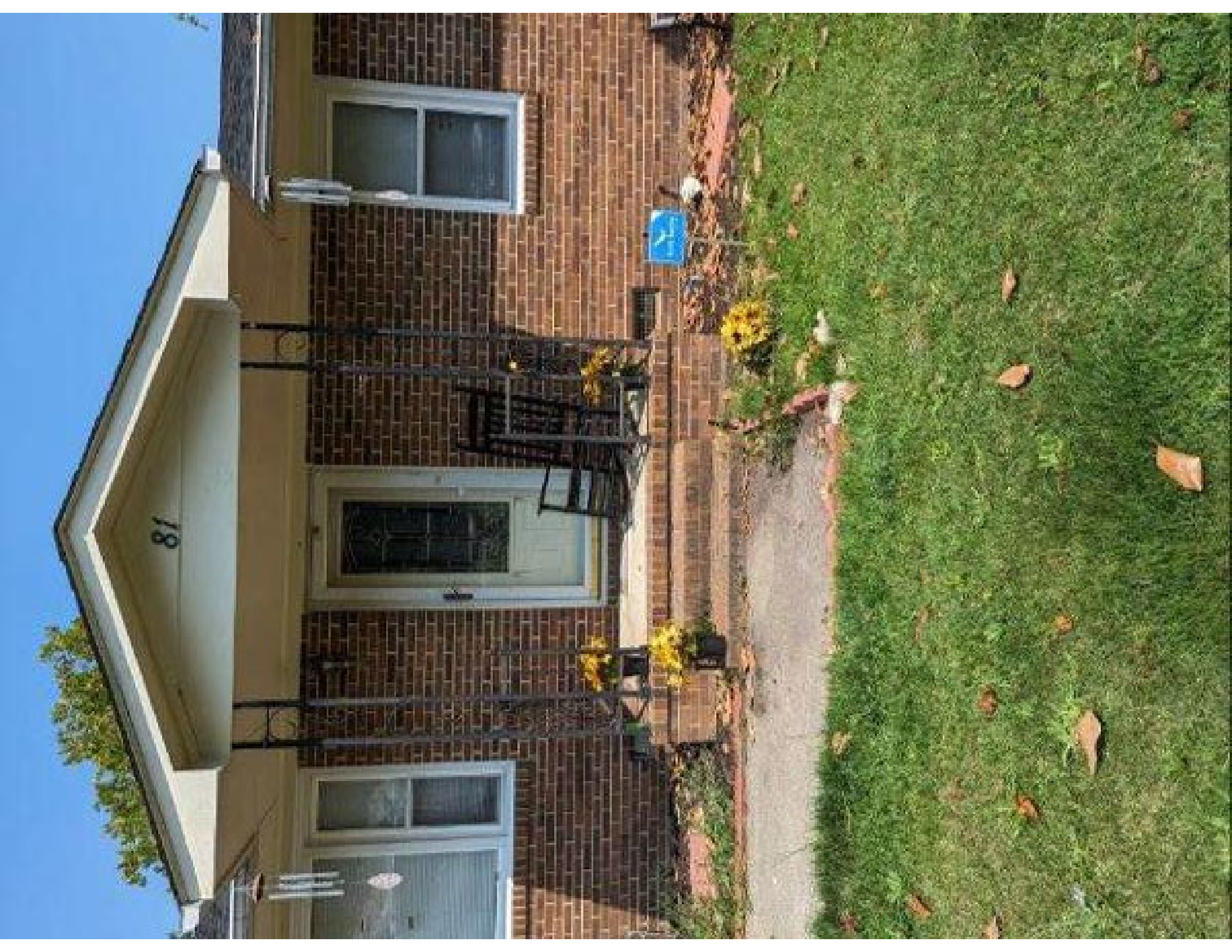
UL 10090











18

Designated Competent Person – Fill out this portion of the form

In Case of Emergency, call 911 immediately and proceed to the nearest emergency room

For non-emergency injuries, please report the injury to your manager, follow the injury Standard Operating Procedures – Notify managers.

Nearest Urgent Care (circle one)	Cape Fear Valley Medical Center
Nearest Emergency Room:	1699 Owen Dr., Fayetteville, NC 28304
Safety Contact:	James Jones (910) 808-1137
Additional Notes:	

Workers

Compensation Provider: Berkshire Hathaway Homestate Companies

Berkshire Hathaway Address: PO Box 881716, San Francisco CA 94188

Berkshire Hathaway Fax Number: (800) 661-6984

Berkshire Hathaway Policy Number: BLWC226029 (OR, FL) - BLWC225838 (all other states)

Blue Raven Fax Number: (385)-498-408

Report Injury

