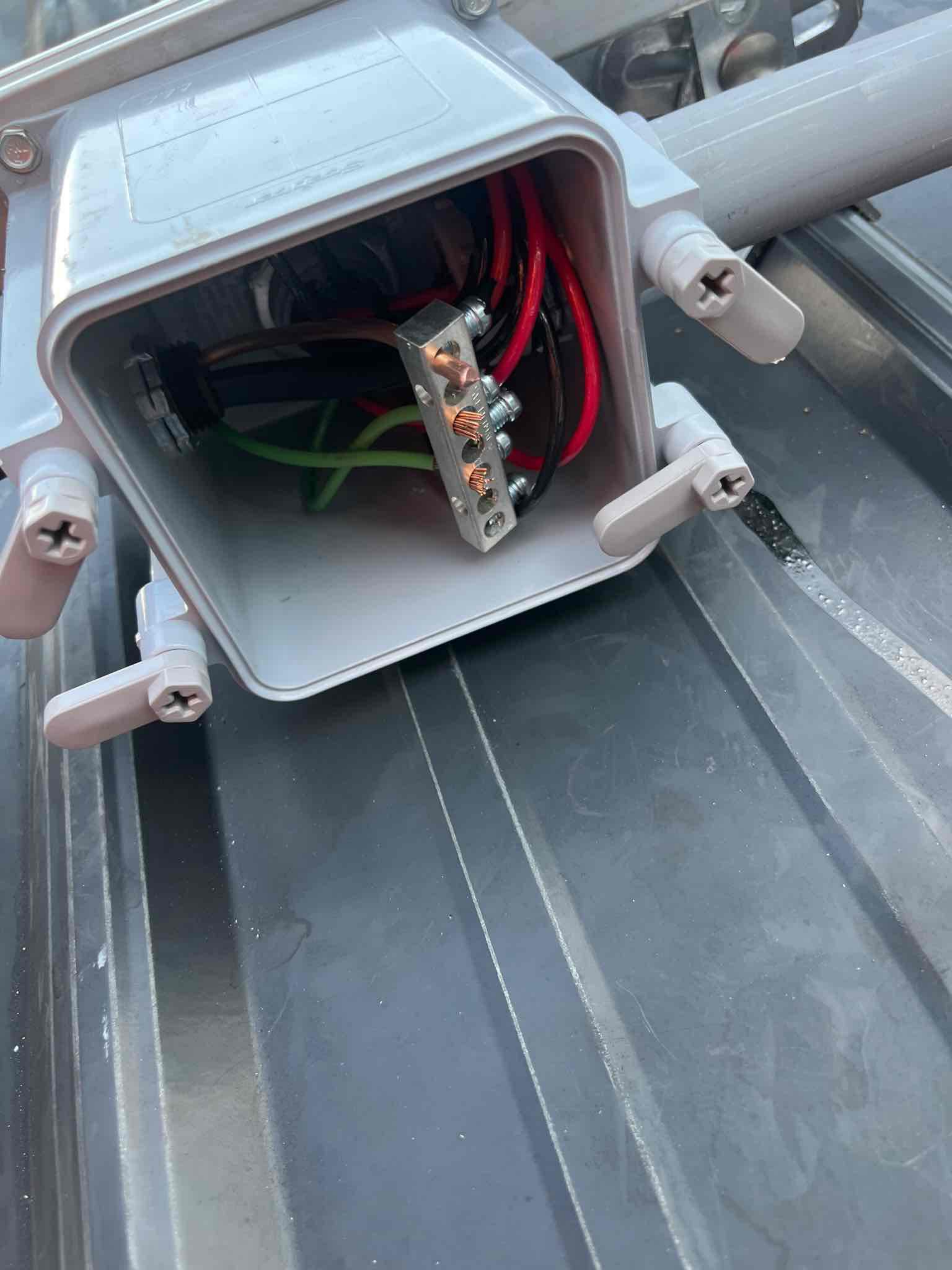






2 3 4 5 6 7 8 9 10 11 12 13 14 15 16 17 18 19 20 21 22





1190

ENPHASE.

IQ8+

Grid Support Utility Interactive Inverter
Multimode Inverter

Patent Information: <https://enphase.com/patents>

Off-grid Power Factor: -1 to 0 to +1
Grid-tied Power Factor: +/- 0.85
DC input range: 16-58 V
Max. input short-circuit current: 25 A
Max. input continuous current: 12 A
AC output voltages: 240 V
AC output currents: 1.21 A
AC output frequency: 60 Hz
AC output power (max. continuous): 290 VA
Operating temperature: -40 °C to +60 °C
Ingress protection: NEMA Type 6
Photovoltaic Rapid Shutdown Equipment
NEC 690.12 and C22.1-2015 Rule 64-218
UL 1741 3rd Ed., incl. 58 Compliant | Assembled in Mexico



This device complies with part 15 of the FCC Rules. Operation is subject to the following two conditions: (1) This device may not cause harmful interference. (2) This device must accept any interference received, including interference that may cause undesired operation.



CAUTION: RISK OF SHOCK. WARRANTY VOID IF COVER REMOVED. NO USER SERVICEABLE PARTS INSIDE. REFER SERVICING TO QUALIFIED SERVICE PERSONNEL.

WARNING: ELECTRIC SHOCK HAZARD. DC CONDUCTORS OF THIS PHOTOVOLTAIC SYSTEM ARE UNGROUNDED AND MAY BE ENERGIZED. AC AND DC VOLTAGE SOURCES TERMINATE INSIDE THIS EQUIPMENT. DISCONNECT BOTH BEFORE SERVICING. PHOTOVOLTAIC ARRAY SUPPLIES A DC VOLTAGE TO THIS EQUIPMENT WHEN EXPOSED TO LIGHT. HOT SURFACES: TO REDUCE THE RISK OF BURNS - DO NOT TOUCH.

ATTENTION: RISQUE D'ELECTROCUTION. LES CONDUCTEURS CC DE CE SYSTEME PHOTOVOLTAIQUE NE SONT PAS RELIES A LA TERRE ET PEUVENT ETRE SOUS TENSION. DES SOURCES DE TENSION CA ET CC SONT CONNECTEES A CET APPAREIL. ISOLER LES DEUX SOURCES AVANT TOUTE INTERVENTION. LES CABLES COURANT CONTINU SONT SOUS TENSION LORSQUE LE CHAMP PHOTOVOLTAIQUE EST EXPOSE A LA LUMIERE. RISQUE DE BRULURE, NE PAS TOUCHER.



1190



883-01331 13 8382 202302080921
108PLUS-72-2-US



202302080921 883-01331















+DC-

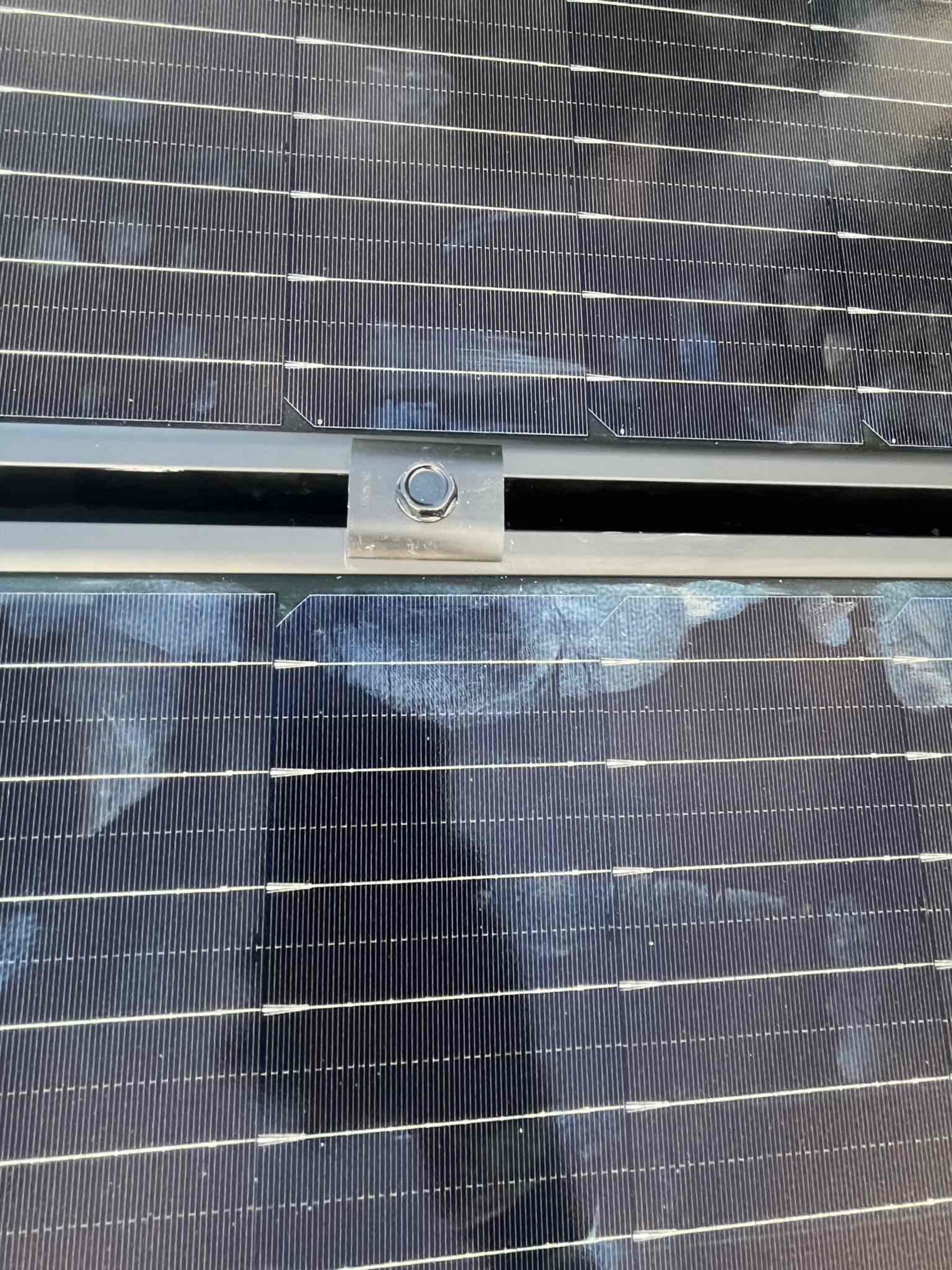


E500984-B (UL) Type DG 600V THHN/THWN-2 90C dry / wet 2/C 12AWG -40C oil res sunlight resistant FT4 SINBON RoHS

840
100
+7

+





UNIRAC MFR 10/2022

WWW.UNIRAC.COM/PATENTS

SYSTEM FIRE CLASS RATING: SEE INSTALLATION REQUIREMENTS TO ACHIEVE A SPECIFIED SYSTEM FIRE CLASS RATING WITH THIS PRODUCT.

DESIGN LOAD RATING: SEE INSTALLATION INSTRUCTIONS FOR LOADS AND MODULES QUALIFIED FOR USE WITH THIS PRODUCT.

SM





Reduce the risk of injury. See manual. Read operator's manual. Use only impact rated sockets. Milwaukee Tool, Milwaukee, WI, USA. SER. 4891-22-011111. M18 HYDRAULIC DRIVER. C-UL US. PR APPD PTA 19 494

PR APPD
PTA 19 494

2
3
4
5
6
7
8
9
10



We aim for a greener tomorrow with completely clean energy solutions

Q. PEAK DUO BLK-G10+ 365

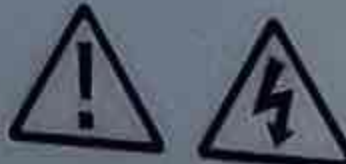
PERFORMANCE AT STANDARD TEST CONDITIONS*

Nominal Power* (+5W/-0W)	P_{MPP}	[W]	365
Short circuit current*	I_{SC}	[A]	11.07
Open circuit voltage*	V_{OC}	[V]	41.21
Current at maximum power	I_{MPP}	[A]	10.56
Voltage at maximum power	V_{MPP}	[V]	34.58
Maximum system voltage	V_{SYS}	[V]	1000 (IEC) 1000 (UL)
Weight	M	[kg/lbs]	19.9/43.9

* Measurement tolerances: $P_{MPP} \pm 3\%$, I_{SC} , $V_{OC} \pm 5\%$ at STC: 1000 W/m², 25 ± 2 °C, AM 1.5 according to IEC 60904-3. Data given are rated (nominal) values.
IEC 61215-2016; IEC 61730-2016.

qcells

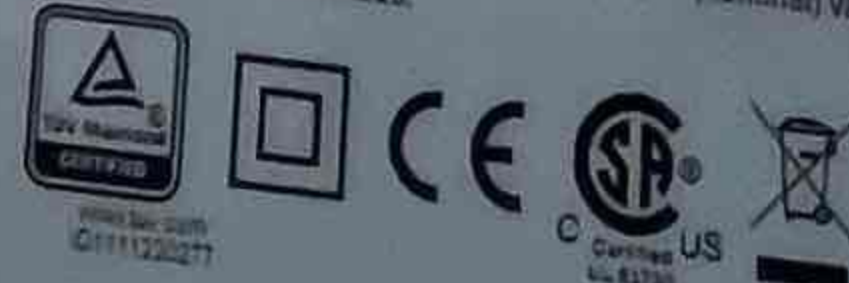
Assembled in USA



DANGER!
Risk of electric shock!
DO NOT connect or disconnect plug contacts while system is under load current. Refer to the Installation and Operation Manual before installing, operating or servicing this unit.

DANGER!
Risque de choc électrique
NE PAS connecter ou déconnecter les connecteurs lorsque le système est en charge. Consultez le manuel d'installation et d'utilisation avant installation, utilisation et entretien du produit.

Fire Rating: Class C / Type 2
Fuse Rating: 20A



Harsha Q CELLS USA Inc.,
320 Nexus Drive, Dalton GA 30721, USA

U.S. Patent No. 9,893,215
(solar cells)

EMAIL service@q-cells.com
WEB www.qcells.com









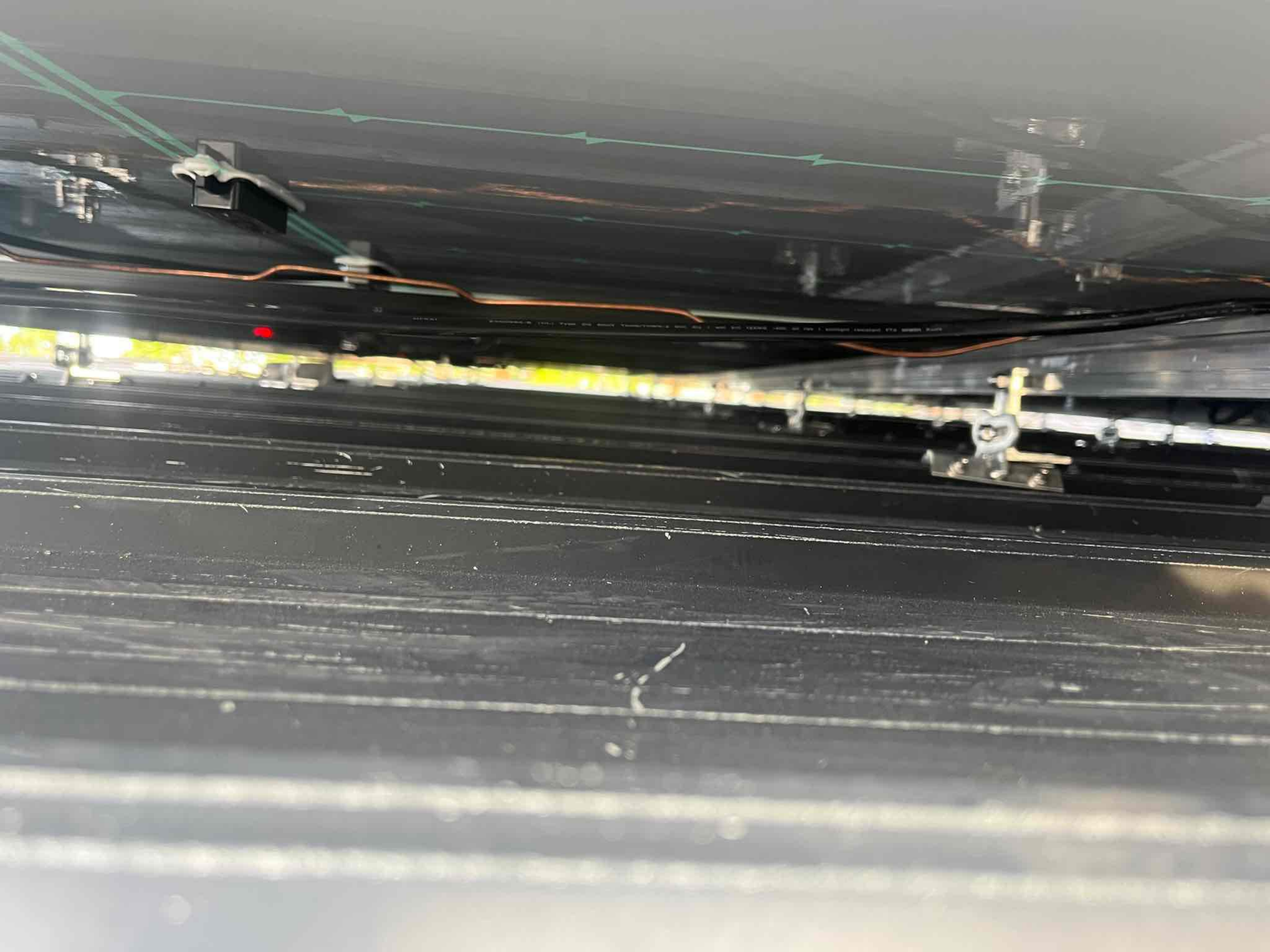
1190





2
3
4
5
6
7
8
9
10
11
12
13
14
15
16
17
18
19









WARNING: PHOTOVOLTAIC
POWER SOURCE



Electrical meter and associated wiring components.

Grey electrical control panel with a red warning label that reads: "WARNING: THIS SYSTEM IS ENERGIZED WITH AC POWER."

Grey electrical control panel with a black label that reads: "GENERAC".

Large white generator unit with a blue and white top. The side of the unit features the following text:
Canter
POWER SYSTEMS
888.372.3278