



HUBER
HUBER

PHOTOVOLTAIC POWER RACE







Quick Mount PV®
Patent: p.qm.solar







Solar Charge Controller

DC Output: 440W/5-60V/15A
AC Input: 8-60V/14.5A
Open Circuit Voltage: 1V

MADE IN: Israel

NA02 ST1022-0156ADA13-6C
S440-1GM4MRM

IN +





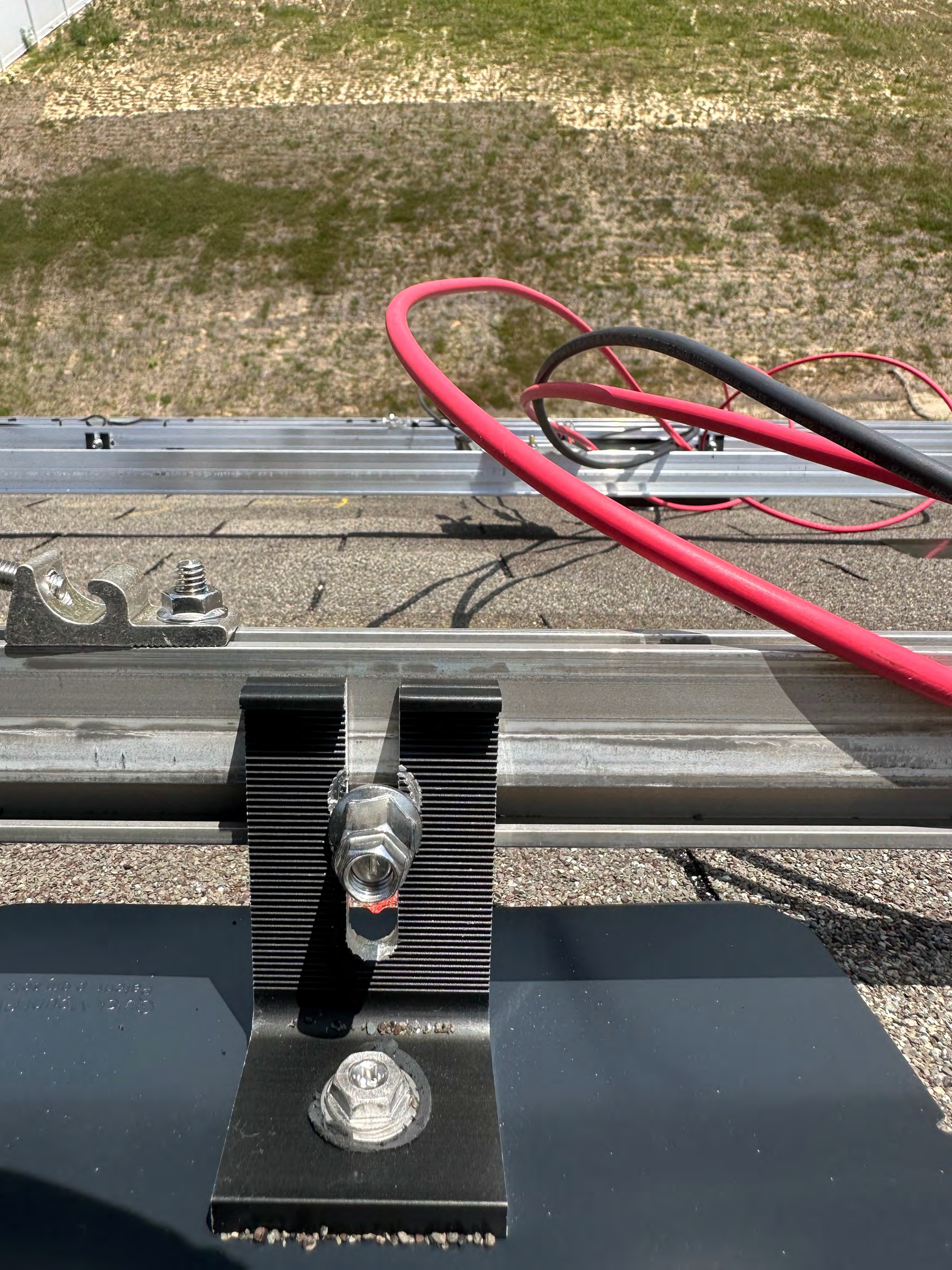
(UL) E32916



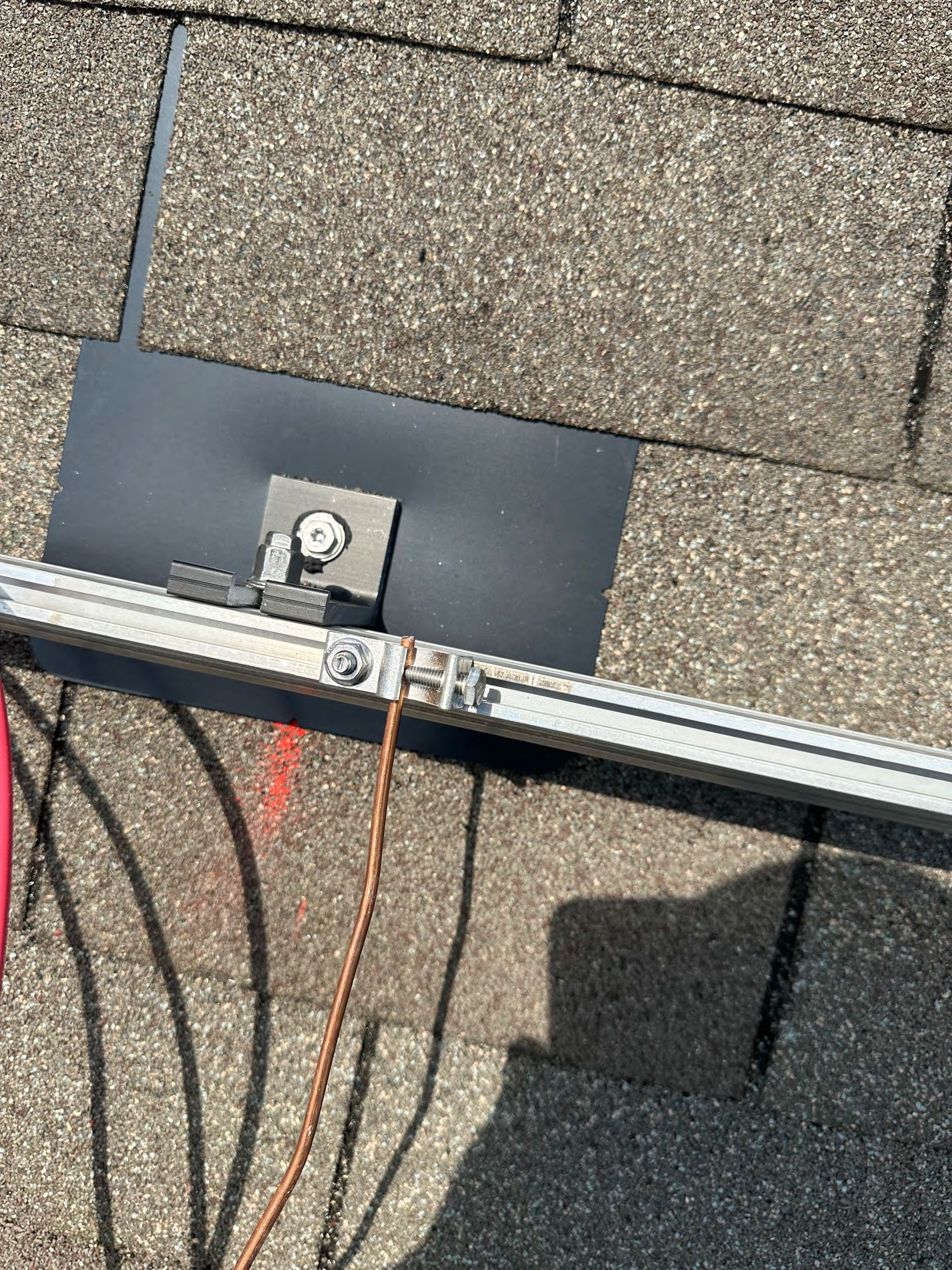




Quick
Patent



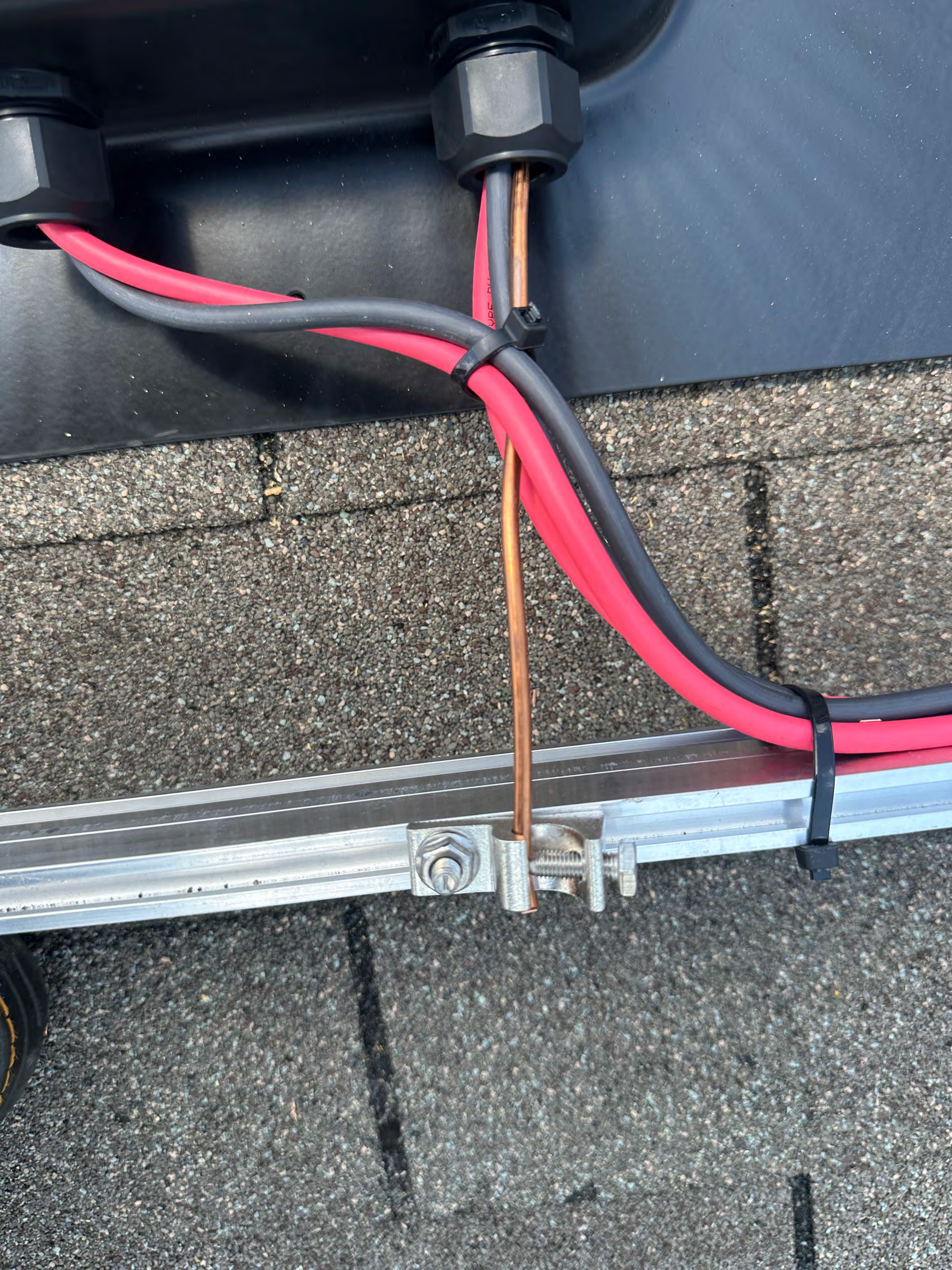
KRIS-TECH WIRE #10 AWG XLP TYPE PU WIRE 2KV

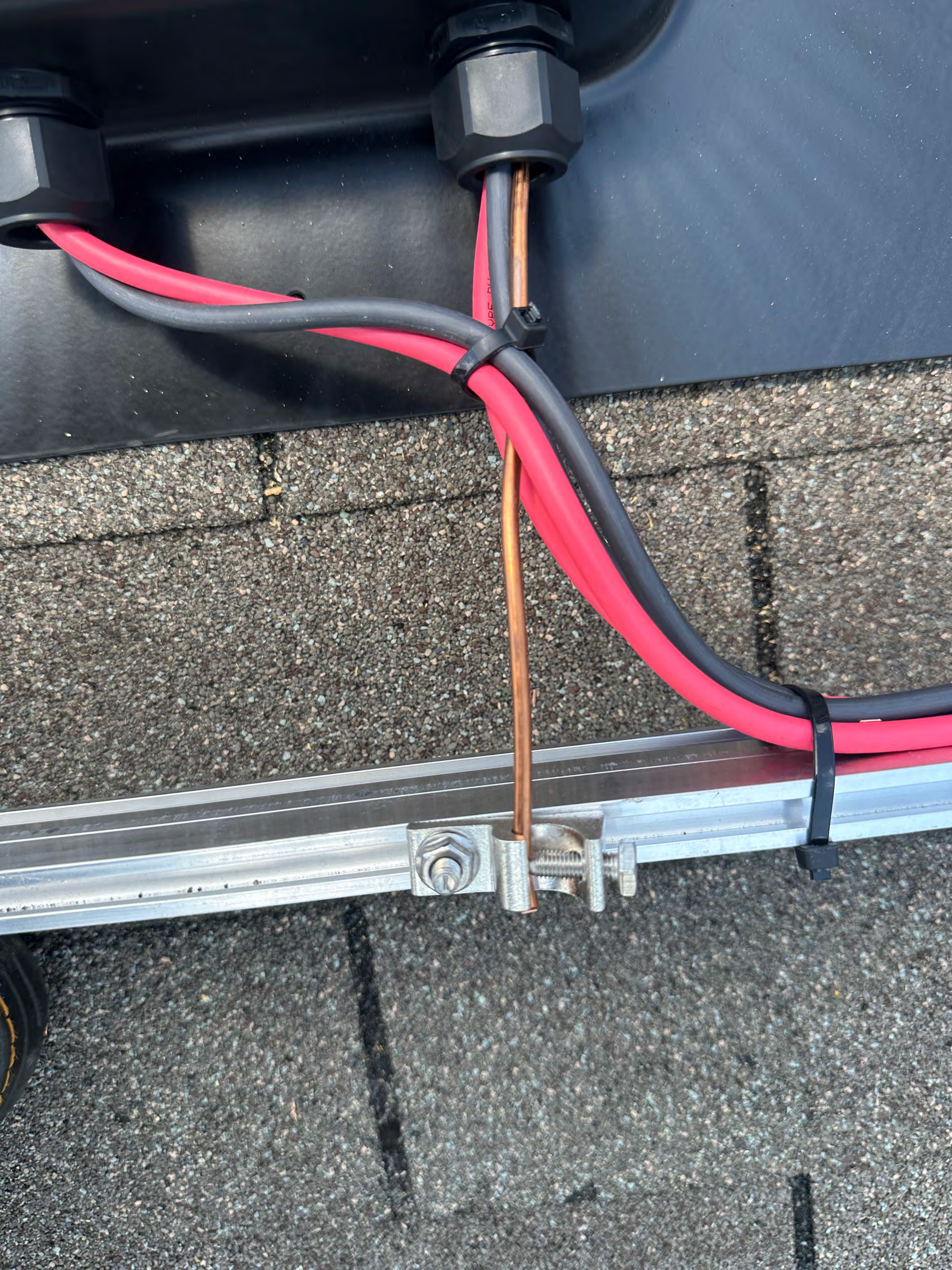








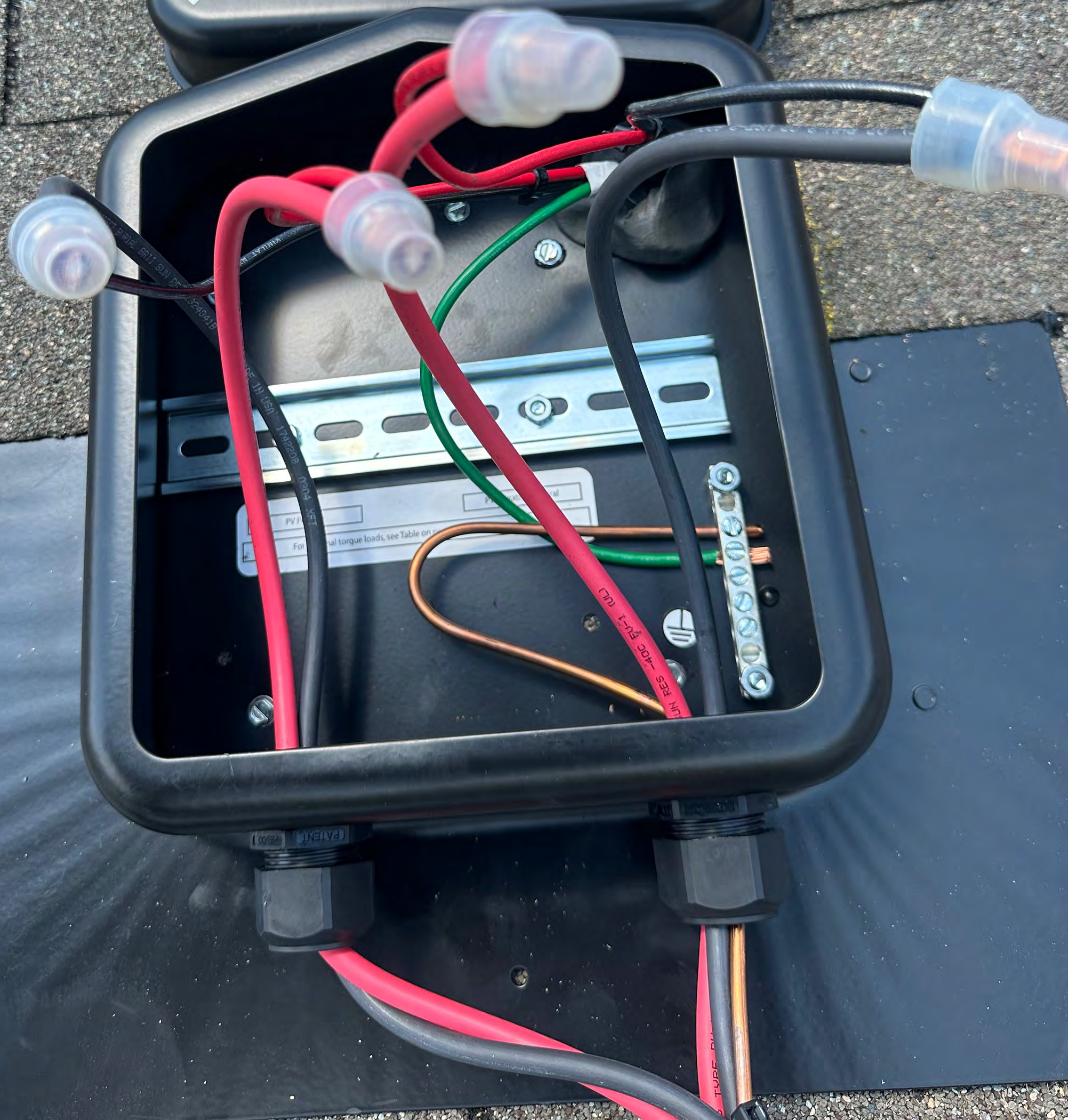




191 CHEDWORTH DR ANGIER, NC 27507

SOLADE
PV Inverter
Model No. US 742208
1000W
Max Ratings: 600VDC/11A AMPS 240VAC/20A
UL 1741, Ambient Temp 75°C
AVERTISSEMENT
WARNING

Model No. US 742208
1000W
UL 1741, Ambient Temp 75°C





SOLADE
 www.soladepowers.com
 Electronic Combiner/Enclosure Conforms to UL
 01 02 03 04 24
 0799 Series
 Max Ratings: 600VDC/115 AMPS, 240VAC/67
 at 10KA, Ambient Temp 75°C

WARNING
 ⚠️ **AVERTISSEMENT**

191 CHEDWORTH DR ANGLIER, NC 27507

RSFC Enterprises
 Patent No. US 7,626,118 B1





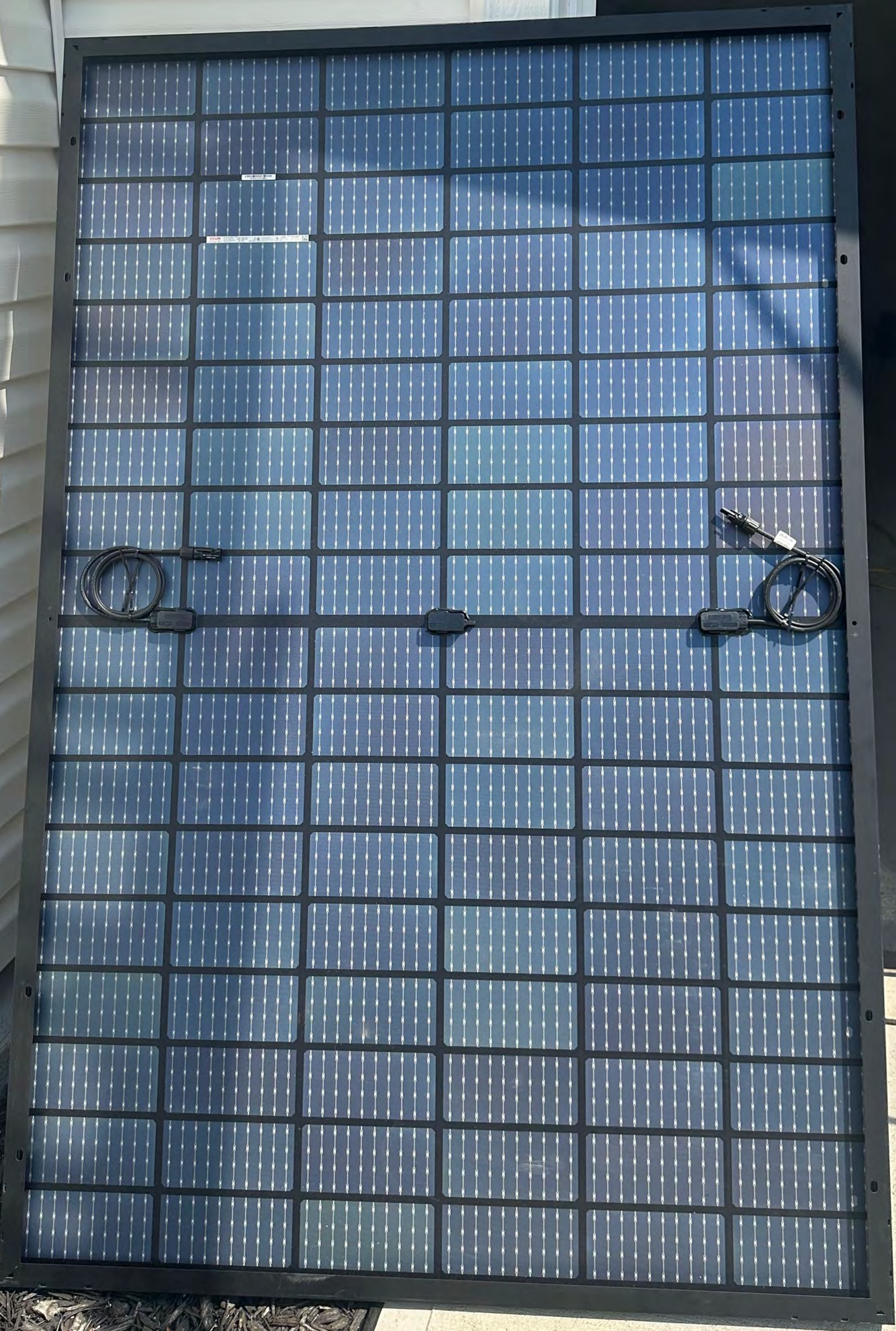
VS2221212

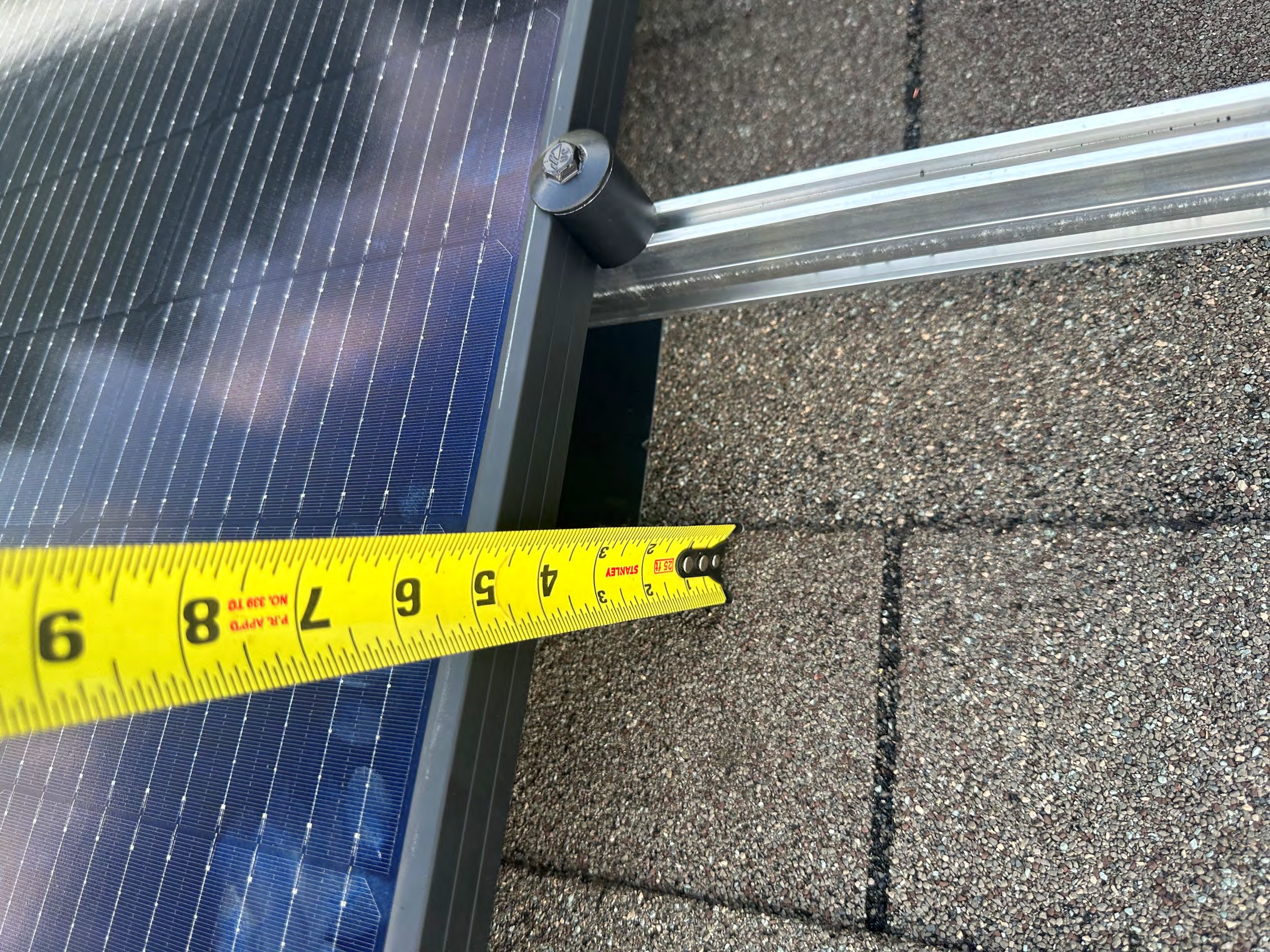
VSUN
Innovative & Smart
Photovoltaic Module

Module Type: VSUN405-108BMH

Maximum Power(Pmpp-Front)	405W	Tolerance of Pmpp	±3%
Open Circuit Voltage(Voc-Front)	37.36V±3%	Series Fuse Rating	30A
Short Circuit Current(Isc-Front)	13.78A±3%	Max System Voltage	1500V
Maximum Power Voltage(Vmpp-Front)	31.36V	Weight	21.4kg
Maximum Power Current(Imp-Front)	12.92A	Dimension:	1722×1134×30(mm)
Power Sorting	0~+5W	STC:	1000W/m ² , 25°C, AM1.5
PV module classification: Type 1(For USA only)/Class C(For Canada only)		MADE IN VIETNAM	

191





9

8

P.R. APPT'D
NO. 339 TO

7

6

5

4

3

STANLEY

25 FT

2

3



