



SOURCE











CAUTION
NEVER TOUCH THE SURFACE OF THE SOLAR PANELS OR THE WIRING. THE SURFACE OF THE SOLAR PANELS IS HOT TO THE TOUCH. ALWAYS USE PROPER HANDLING TECHNIQUES TO AVOID DAMAGE TO THE PANELS AND TO YOURSELF.

WARNING / AVERTISSEMENT
NEVER TOUCH THE SURFACE OF THE SOLAR PANELS OR THE WIRING. THE SURFACE OF THE SOLAR PANELS IS HOT TO THE TOUCH. ALWAYS USE PROPER HANDLING TECHNIQUES TO AVOID DAMAGE TO THE PANELS AND TO YOURSELF.



FG



CAUTION

HOT SURFACES TO REDUCE THE RISK OF BURNS DO NOT TOUCH SURFACES OF ELECTRIC SHOCK WHEN THE PHOTOVOLTAIC ARRAY IS EXPOSED TO LIGHT. IT SUPPLIES A DC VOLTAGE TO EQUIPMENT. COVER PV MODULE WITH OPaque MATERIAL BEFORE CONNECTING OR DISCONNECTING THE CIRCUIT. DURING FAULT, ZERO CURRENT IS SOURCED ALSO. READ THE MANUAL.

FE

Multiple Technology
Energy Solutions

Photovoltaic Array
Energy Solutions
Multiple Technology



WARNING

ELECTRIC SHOCK HAZARD. THE DISCONNECTING OF THE SYSTEM ARE UNRECOMMENDED AND MAY BE DANGEROUS.

AVERTISSEMENT

LES SURFACES CHAUDES PEUVENT PROVOQUER DES BRULURES. NE PAS TOUCHER LES SURFACES DE L'ARRAY PHOTOVOLTAÏQUE LORSQU'IL Y A DE LA LUMIÈRE. IL FOURNIT UNE TENSION EN COURANT CONTINU. COUVER LES MODULES PV AVEC UN MATÉRIEL OPAQUE AVANT DE CONNECTER OU DE DÉCONNECTER LE CIRCUIT. EN CAS DE FAUTE, LE COURANT EST ÉGALEMENT SOURCÉ. LIRE LE MANUEL.



Do Not Remove



13782218-01
SolarEdge Technologies Ltd.
SolarEdge Technologies GmbH
Werner-Heisenberg-Str. 16 73074 Esslingen/Germany

FC

SolarEdge Technologies Ltd
Power Optimiser

SolarEdge Technologies Ltd
Werner-Heisenberg-Str.
Munster, Germany



017002101A-01

CAUTION

HOT SURFACES TO REDUCE THE RISK OF BURNS DO NOT TOUCH WHEN THE RISK OF ELECTRIC SHOCK WHEN THE RISK OF ELECTRIC SHOCK IS EXPOSED TO PHOTOVOLTAIC A DC VOLTAGE WITH EQUIPMENT. COVER PV MODULE BEFORE CONNECTING TO EQUIPMENT. COVER PV MODULE BEFORE CONNECTING TO EQUIPMENT. COVER PV MODULE BEFORE CONNECTING TO EQUIPMENT. COVER PV MODULE BEFORE CONNECTING TO EQUIPMENT.

THE DC CONDUCTORS OF THIS PRODUCT ARE NOT TO BE USED AS A SUBSTITUTE FOR THE DC CONDUCTORS OF THE PHOTOVOLTAIC MODULE.

01705201A-03



Do Not Remove

01705201A-03



Energy
400410

SolarEdge Technologies Ltd.
SolarEdge Technologies GmbH
Werner-Eckert-Straße 6/81829 Munich/Germany

CAUTION

HOT SURFACES-TO REDUCE THE RISK OF BURNS-DO NOT TOUCH. RISK OF ELECTRIC SHOCK-WHEN THE PHOTOVOLTAIC ARRAY IS EXPOSED TO LIGHT, IT SUPPLIES A DC VOLTAGE TO EQUIPMENT. COVER PV MODULE WITH OPAQUE MATERIAL BEFORE CONNECTING OR DISCONNECTING THIS OPTIMIZER. DURING FAULT, ZERO CURRENT IS SOURCED INTO DC ARRAY BY CONVERTER

SolarEdge Technologies Ltd.
Power Optimizer

Solaredge Technologies GmbH
Werner-Eckert-Straße 6/81829
Munich/Germany

WARNING ELECTRIC SHOCK HAZARD. THE DC CONDUCTORS OF THIS PHOTOVOLTAIC SYSTEM ARE UNGROUNDED AND MAY BE ENERGIZED.

AVERTISSEMENT

LE CHAMP DE L'ÉLECTRICITÉ
PEUT ÊTRE ÉNERGÉ





On Main Enclosure 37101004 04



Model No. 37100000
 Serial No. 37100000
 Date of Mfg. 37100000
 Serial No. 37100000
 Date of Mfg. 37100000




CAUTION

DO NOT SURFACE MOUNT REDUCE THE RISK OF SURFACE MOUNT SURFACE RISK OR ELECTRIC SHOCK WITH THE PHOTOVOLTAIC ARRAY IS EXPOSED TO LIGHT OR SURFACES A DC VOLTAGE TO EQUIPMENT COVER PV MODULE WITH EQUIPMENT MATERIAL BEFORE CONNECTING OR DISCONNECTING THIS CONNECTIVE CABLES MAKE SURE TO MAKE IT IN SURFACE MOUNT OR ARRAY BY CONNECTIVE



SolarEdge Technologies Ltd
 Power Optimizer
 SolarEdge Technologies GmbH
 Werner-Str. 67, 89189
 Ulm, Germany

WARNING

ELECTRIC SHOCK HAZARD THE DC CONDUCTORS UP THROUGHOUT THE SYSTEM ARE UNGROUNDING AND MAY BE ENERGIZED.

AVERTISSEMENT

HAZARD OF SHOCK (ELECTRIC) DANGER LE CÂBLAGE PHOTOVOLTAÏQUE EST EXPOSÉ À LA TENSION, L'ÉTAT TENSION DE EST ÉNERGIE À CET ÉQUIPEMENT SURFACE D'AVERTISSEMENT NE PAS TOUCHER AVEC LE RECHERCHER LES INDICATEUR RECHERCHER LE CÂBLAGE PHOTOVOLTAÏQUE POUR LE CONNEXIONNER EN CAS DE DIFFÉRENCE DANS LE CÂBLAGE PV EST NE PAS TOUCHER.





CAUTION

HOT SURFACES TO REDUCE THE RISK OF BURNING DO NOT TOUCH. RISK OF ELECTRIC SHOCK WHEN IN CONTACT WITH ELECTRICAL COMPONENTS. PHOTOVOLTAIC ARRAY SUPPORTS ARE NOT TO BE USED AS A LIFTING POINT. TO SUPPORT THE WEIGHT OF THE ARRAY, USE THE LIFTING POINTS PROVIDED ON THE BACK OF THE ARRAY SUPPORTS.

WARNING

PROPER INSTALLATION AND MAINTENANCE OF THIS PRODUCT IS ESSENTIAL TO PREVENT DAMAGE TO THE PRODUCT AND TO THE ROOF. ALWAYS USE THE LIFTING POINTS PROVIDED ON THE BACK OF THE ARRAY SUPPORTS TO SUPPORT THE WEIGHT OF THE ARRAY. DO NOT USE THE ARRAY SUPPORTS AS A LIFTING POINT. TO SUPPORT THE WEIGHT OF THE ARRAY, USE THE LIFTING POINTS PROVIDED ON THE BACK OF THE ARRAY SUPPORTS.























STONOLTAIC POWER SOURCE























































SERVO/THC POWER SOURCE











PHOTOVOLTAIC POWER SOURCE













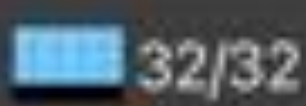
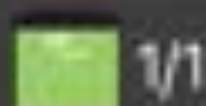








PHOTOVOLTAIC POWER SOURCE





















































































































































Joame burnette
404 E J st, Erwin, NC
32 panels 3 strings
S1 - red - 11p
S2 - blue - 13p
S3 - yellow - 8p











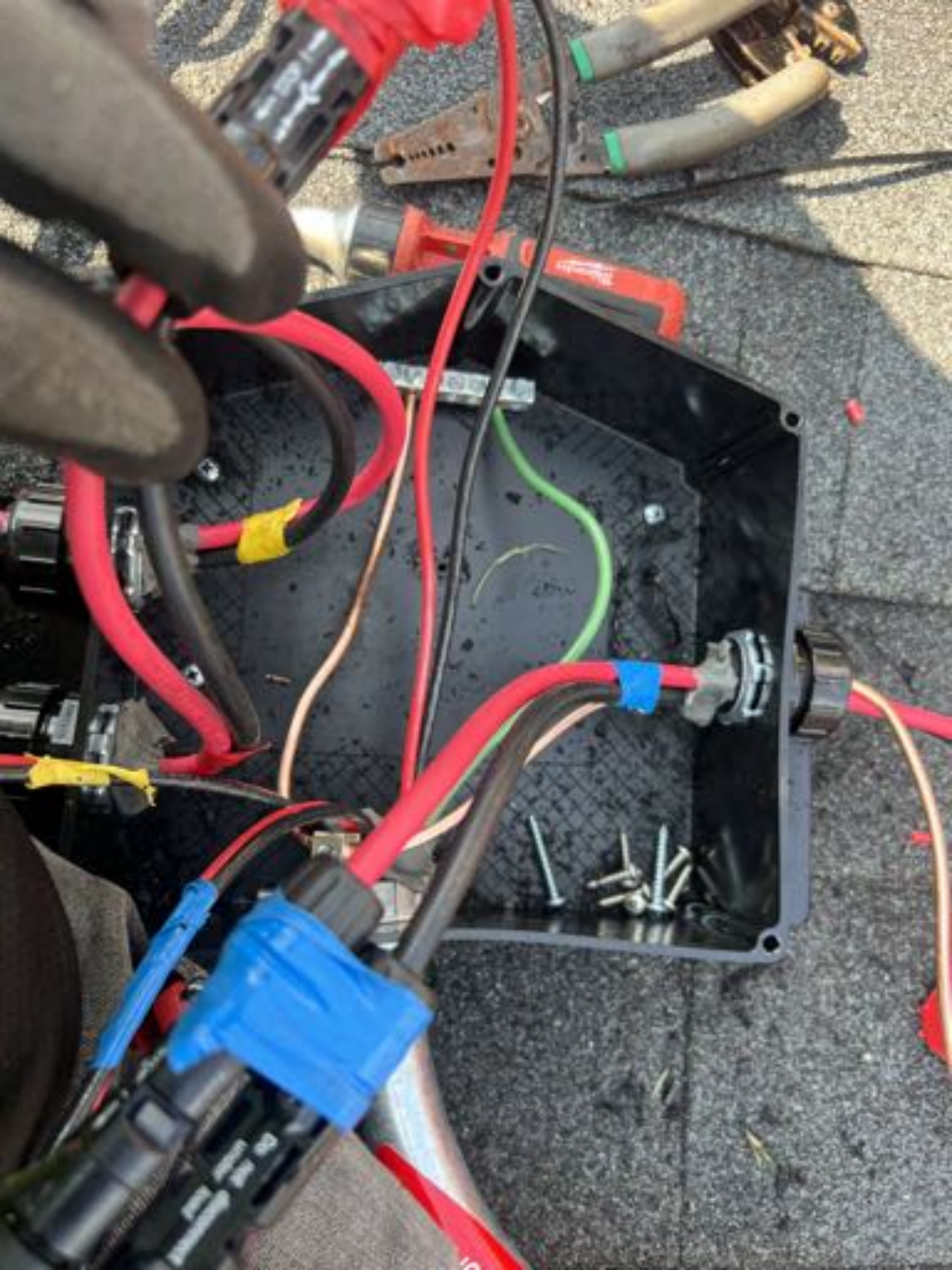


STATIC POWER SOURCE



Do not disconnect
your hand

Do not









Do not disconnect
under load

Do not disconnect
under load

Joame bunnette
404 E J st, Erwin, Nc
32 panels 3 strings
S1 - red - 11p
S2 - blue - 13p
S3 - yellow - 8p



Intertek
6010042 NEMA 3R

REFER TO INSTALLATION MANUAL
VOLUME 200 VOLTAGE
TORQUE FOR ALL WIRE & BOLTS. DO NOT
CONFORMS TO UL 818-100-1042



Technical label on a solar panel, including a barcode, QR code, and various safety and performance icons.

| Parameter | Value |
|-------------------------|-------|
| Model | ... |
| Power (W) | ... |
| Voltage (V) | ... |
| Current (A) | ... |
| Efficiency (%) | ... |
| Temperature Coefficient | ... |
| Warranty | ... |

MADE IN THE USA



MANUFACTURER'S LABEL

Model No. [unreadable]

Serial No. [unreadable]

Capacity [unreadable]

Weight [unreadable]

Dimensions [unreadable]

Installation Instructions [unreadable]

Warranty Information [unreadable]

Manufacturer's Name [unreadable]

Address [unreadable]

Phone [unreadable]

Fax [unreadable]

Website [unreadable]

Barcode [unreadable]

QR Code [unreadable]

Warning Symbols: [unreadable]



UTILITY CABINET LABEL

Barcode

QR Code

Technical Specifications and Safety Icons

| Parameter | Value |
|------------|-------|
| Model | ... |
| Capacity | ... |
| Weight | ... |
| Dimensions | ... |

Safety Icons: Fire, Shock, etc.

Manufacturer Information



WARNING

SAFETY PRECAUTIONS

INSTALLATION

OPERATION

MAINTENANCE

REPAIRS

DISPOSAL

WARRANTY

CONTACT INFORMATION

MODEL NUMBER

DATE OF MANUFACTURE

SN

QR CODE

UL LISTED

IEEE 1547

UL 1741

UL 6173

UL 6183

UL 6184

UL 6185

UL 6186

UL 6187

UL 6188

UL 6189

UL 6190

UL 6191

UL 6192

UL 6193

UL 6194

UL 6195

UL 6196

UL 6197

UL 6198

UL 6199

UL 6200

UL 6201

UL 6202

UL 6203

UL 6204

UL 6205

UL 6206

UL 6207

UL 6208

UL 6209

UL 6210

UL 6211

UL 6212

UL 6213

UL 6214

UL 6215

UL 6216

UL 6217

UL 6218

UL 6219

UL 6220

UL 6221

UL 6222

UL 6223

UL 6224

UL 6225

UL 6226

UL 6227

UL 6228

UL 6229

UL 6230

UL 6231

UL 6232

UL 6233

UL 6234

UL 6235

UL 6236

UL 6237

UL 6238

UL 6239

UL 6240

UL 6241

UL 6242

UL 6243

UL 6244

UL 6245

UL 6246

UL 6247

UL 6248

UL 6249

UL 6250

UL 6251

UL 6252

UL 6253

UL 6254

UL 6255

UL 6256

UL 6257

UL 6258

UL 6259

UL 6260

UL 6261

UL 6262

UL 6263

UL 6264

UL 6265

UL 6266

UL 6267

UL 6268

UL 6269

UL 6270

UL 6271

UL 6272

UL 6273

UL 6274

UL 6275

UL 6276

UL 6277

UL 6278

UL 6279

UL 6280

UL 6281

UL 6282

UL 6283

UL 6284

UL 6285

UL 6286

UL 6287

UL 6288

UL 6289

UL 6290

UL 6291

UL 6292

UL 6293

UL 6294

UL 6295

UL 6296

UL 6297

UL 6298

UL 6299

UL 6300

UL 6301

UL 6302

UL 6303

UL 6304

UL 6305

UL 6306

UL 6307

UL 6308

UL 6309

UL 6310

UL 6311

UL 6312

UL 6313

UL 6314

UL 6315

UL 6316

UL 6317

UL 6318

UL 6319

UL 6320

UL 6321

UL 6322

UL 6323

UL 6324

UL 6325

UL 6326

UL 6327

UL 6328

UL 6329

UL 6330

UL 6331

UL 6332

UL 6333

UL 6334

UL 6335

UL 6336

UL 6337

UL 6338

UL 6339

UL 6340

UL 6341

UL 6342

UL 6343

UL 6344

UL 6345

UL 6346

UL 6347

UL 6348

UL 6349

UL 6350

UL 6351

UL 6352

UL 6353

UL 6354

UL 6355

UL 6356

UL 6357

UL 6358

UL 6359

UL 6360

UL 6361

UL 6362

UL 6363

UL 6364

UL 6365

UL 6366

UL 6367

UL 6368

UL 6369

UL 6370

UL 6371

UL 6372

UL 6373

UL 6374

UL 6375

UL 6376

UL 6377

UL 6378

UL 6379

UL 6380

UL 6381

UL 6382

UL 6383

UL 6384

UL 6385

UL 6386

UL 6387

UL 6388

UL 6389

UL 6390

UL 6391

UL 6392

UL 6393

UL 6394

UL 6395

UL 6396

UL 6397

UL 6398

UL 6399

UL 6400

UL 6401

UL 6402

UL 6403

UL 6404

UL 6405

UL 6406

UL 6407

UL 6408

UL 6409

UL 6410

UL 6411

UL 6412

UL 6413

UL 6414

UL 6415

UL 6416

UL 6417

UL 6418

UL 6419

UL 6420

UL 6421

UL 6422

UL 6423

UL 6424

UL 6425

UL 6426

UL 6427

UL 6428

UL 6429

UL 6430

UL 6431

UL 6432

UL 6433

UL 6434

UL 6435

UL 6436

UL 6437

UL 6438

UL 6439

UL 6440

UL 6441

UL 6442

UL 6443

UL 6444

UL 6445

UL 6446

UL 6447

UL 6448

UL 6449

UL 6450

UL 6451

UL 6452

UL 6453

UL 6454

UL 6455

UL 6456

UL 6457

UL 6458

UL 6459

UL 6460

UL 6461

UL 6462

UL 6463

UL 6464

UL 6465

UL 6466

UL 6467

UL 6468

UL 6469

UL 6470

UL 6471

UL 6472

UL 6473

UL 6474

UL 6475

UL 6476

UL 6477

UL 6478

UL 6479

UL 6480

UL 6481

UL 6482

UL 6483

UL 6484

UL 6485

UL 6486

UL 6487

UL 6488

UL 6489

UL 6490

UL 6491

UL 6492

UL 6493

UL 6494

UL 6495

UL 6496

UL 6497

UL 6498

UL 6499

UL 6500

UL 6501

UL 6502

UL 6503

UL 6504

UL 6505

UL 6506

UL 6507

UL 6508

UL 6509

UL 6510

UL 6511

UL 6512

UL 6513

UL 6514

UL 6515

UL 6516

UL 6517

UL 6518

UL 6519

UL 6520

UL 6521

UL 6522

UL 6523

UL 6524

UL 6525

UL 6526

UL 6527

UL 6528

UL 6529

UL 6530

UL 6531

UL 6532

UL 6533

UL 6534

UL 6535

UL 6536

UL 6537

UL 6538

UL 6539

UL 6540

UL 6541

UL 6542

UL 6543

UL 6544

UL 6545

UL 6546

UL 6547

UL 6548

UL 6549

UL 6550

UL 6551

UL 6552

UL 6553

UL 6554

UL 6555

UL 6556

UL 6557

UL 6558

UL 6559

UL 6560

UL 6561

UL 6562

UL 6563

UL 6564

UL 6565

UL 6566

UL 6567

UL 6568

UL 6569

UL 6570

UL 6571

UL 6572

UL 6573

UL 6574

UL 6575

UL 6576

UL 6577

UL 6578

UL 6579

UL 6580

UL 6581

UL 6582

UL 6583

UL 6584

UL 6585

UL 6586

UL 6587

UL 6588

UL 6589

UL 6590

UL 6591

UL 6592

UL 6593

UL 6594

UL 6595

UL 6596

UL 6597

UL 6598

UL 6599

UL 6600

UL 6601

UL 6602

UL 6603

UL 6604

UL 6605

UL 6606

UL 6607

UL 6608

UL 6609

UL 6610

UL 6611

UL 6612

UL 6613

UL 6614

UL 6615

UL 6616

UL 6617

UL 6618

UL 6619

UL 6620

UL 6621

UL 6622

UL 6623

UL 6624

UL 6625

UL 6626

UL 6627

UL 6628

UL 6629

UL 6630

UL 6631

UL 6632

UL 6633

UL 6634

UL 6635

UL 6636

UL 6637

UL 6638

UL 6639

UL 6640

UL 6641

UL 6642

UL 6643

UL 6644

UL 6645

UL 6646

UL 6647

UL 6648

UL 6649

UL 6650

UL 6651

UL 6652

UL 6653

UL 6654

UL 6655

UL 6656

UL 6657

UL 6658

UL 6659

UL 6660

UL 6661

UL 6662

UL 6663

UL 6664

UL 6665

UL 6666

UL 6667

UL 6668

UL 6669

UL 6670

UL 6671

UL 6672

UL 6673

UL 6674

UL 6675

UL 6676

UL 6677

UL 6678

UL 6679

UL 6680

UL 6681

UL 6682

UL 6683

UL 6684

UL 6685

UL 6686

UL 6687

UL 6688

UL 6689

UL 6690

UL 6691

UL 6692

UL 6693

UL 6694

UL 6695

UL 6696

UL 6697

UL 6698

UL 6699

UL 6700

UL 6701

UL 6702

UL 6703

UL 6704

UL 6705

UL 6706

UL 6707

UL 6708

UL 6709

UL 6710

UL 6711

UL 6712

UL 6713

UL 6714

UL 6715

UL 6716

UL 6717

UL 6718

UL 6719

UL 6720

UL 6721

UL 6722

UL 6723

UL 6724

UL 6725

UL 6726

UL 6727

UL 6728

UL 6729

UL 6730

UL 6731

UL 6732

UL 6733

UL 6734

UL 6735

UL 6736

UL 6737

UL 6738

UL 6739

UL 6740

UL 6741

UL 6742

UL 6743

UL 6744

UL 6745

UL 6746

UL 6747

UL 6748

UL 6749

UL 6750

UL 6751

UL 6752

UL 6753

UL 6754

UL 6755

UL 6756

UL 6757

UL 6758

UL 6759

UL 6760

UL 6761

UL 6762

UL 6763

UL 6764

UL 6765

UL 6766

UL 6767

UL 6768

UL 6769

UL 6770

UL 6771

UL 6772

UL 6773

UL 6774

UL 6775

UL 6776

UL 6777

UL 6778

UL 6779

UL 6780

UL 6781

UL 6782

UL 6783

UL 6784

UL 6785

UL 6786

UL 6787

UL 6788

UL 6789

UL 6790

UL 6791

UL 6792

UL 6793

UL 6794

UL 6795

UL 6796

UL 6797

UL 6798

UL 6799

UL 6800

UL 6801

UL 6802

UL 6803

UL 6804

UL 6805

UL 6806

UL 6807

UL 6808

UL 6809

UL 6810

UL 6811

UL 6812

UL 6813

UL 6814

UL 6815

UL 6816

UL 6817

UL 6818

UL 6819

UL 6820

UL 6821

UL 6822

UL 6823

UL 6824

UL 6825

UL 6826

UL 6827

UL 6828

UL 6829

UL 6830

UL 6831

UL 6832

UL 6833

UL 6834

UL 6835

UL 6836

UL 6837

UL 6838

UL 6839

UL 6840

UL 6841

UL 6842

UL 6843

UL 6844

UL 6845

UL 6846

UL 6847

UL 6848

UL 6849

UL 6850

UL 6851

UL 6852

UL 6853

UL 6854

UL 6855

UL 6856

UL 6857

UL 6858

UL 6859

UL 6860

UL 6861

UL 6862

UL 6863

UL 6864

UL 6865

UL 6866

UL 6867

UL 6868

UL 6869

UL 6870

UL 6871

UL 6872

UL 6873

UL 6874

UL 6875

UL 6876

UL 6877

UL 6878

UL 6879

UL 6880

UL 6881

UL 6882

UL 6883

UL 6884

UL 6885

UL 6886

UL 6887

UL 6888

UL 6889

UL 6890

UL 6891

UL 6892

UL 6893

UL 6894

UL 6895

UL 6896

UL 6897

UL 6898

UL 6899

UL 6900

UL 6901

UL 6902

UL 6903

UL 6904

UL 6905

UL 6906

UL 6907

UL 6908

UL 6909

UL 6910

UL 6911

UL 6912

UL 6913

UL 6914

UL 6915

UL 6916

UL 6917

UL 6918

UL 6919

UL 6920

UL 6921

UL 6922

UL 6923

UL 6924

UL 6925

UL 6926

UL 6927

UL 6928

UL 6929

UL 6930

UL 6931

UL 6932

UL 6933

UL 6934

UL 6935

UL 6936

UL 6937

UL 6938

UL 6939

UL 6940

UL 6941

UL 6942

UL 6943

UL 6944

UL 6945

UL 6946

UL 6947

UL 6948

UL 6949

UL 6950

UL 6951

UL 6952

UL 6953

UL 6954

UL 6955

UL 6956

UL 6957

UL 6958

UL 6959

UL 6960

UL 6961

UL 6962

UL 6963

UL 6964

UL 6965

UL 6966

UL 6967

UL 6968

UL 6969

UL 6970

UL 6971

UL 6972

UL 6973

UL 6974

UL 6975

UL 6976

UL 6977

UL 6978

UL 6979

UL 6980

UL 6981</

WARRANTY ONLINE

M230005-B0167

WARRANTY

| | |
|---------------------|---------------|
| Model Number | M230005-B0167 |
| Serial Number | 48.1 |
| Warranty Start Date | 07.23 |
| Warranty End Date | 07.23 |
| Warranty Type | 12.00 |
| Warranty Status | 12.00 |

This warranty is void if the product is damaged, altered, or used in an unauthorized manner. It does not cover consequential damage or labor. The manufacturer is not responsible for the transportation of the product. The manufacturer is not responsible for the installation of the product. The manufacturer is not responsible for the damage to the product caused by the user. The manufacturer is not responsible for the damage to the product caused by the user.

For more information, visit www.homedepot.com.

© 2012 Home Depot. All rights reserved.

Address: 8000 N. New Braunfels Blvd, San Antonio, TX 78250
ASSEMBLED IN THE USA

solar**edge**

HD wave

PV SYSTEM DC DISCONNECT

MAXIMUM VOLTAGE **480V**

MAXIMUM CIRCUIT CURRENT **125A**

MAXIMUM RATED OUTPUT
CURRENT OF THE CHARGE
CONTROLLER OR DC TO DC
CONVERTER (IF INSTALLED)

DC DISCONNECT

OFF



RAPID SHUTDOWN
SWITCH FOR
SOLAR PV SYSTEM

solar**edge**







solar **edge**

StorEdge Connection Unit

| | |
|-------------------------------------|-----------|
| Max DC Voltage (PV/Battery) | 480 Vdc |
| Max DC Current (PV) | 52 Adc |
| Max DC Power (PV) | 25.2 kWdc |
| Max Continuous DC Current (Battery) | 31 Adc |
| Max Continuous DC Power (Battery) | 11.8 kWdc |
| Max AC Voltage | 264 Vac |
| AC Single Phase Frequency | 50/60 Hz |
| Max AC Current (Grid) | 48 Aac |

For more details refer to the installation guide
Patent marketing notice: see WWW.SOLAREGE.COM/psnm

DCD-1PH-US-P2H-F-1
PN: 
SV1522-19190A033-F4
SN: 
Made in Vietnam





solar **edge**

StorEdge Connection Unit

| | |
|--|--------------------|
| Max AC Current (Smart EV Charger) | 40Aac |
| Max Continuous Output Power (Smart EV Charger) | 9600W |
| Max Battery Energy Storage | 12kWh |
| Number of AC phases | L1, L2, N |
| Maximum AC short circuit current | 75 Aac |
| Weight | 30.2 / 33.7 lbs/kg |
| Ambient Temperature: | 40°C / 104°F |
| Enclosure Rating: | IP55 / Type 4X |

For more details refer to the installation guide
Patent marketing notice: see WWW.SOLAREGE.COM/psnm
Use NEMA 3R enclosure for outdoor use only
Revised Grade 400 C11 20
19190A033-F4

DCD-1PH-US-P2H-F-1
PN: 
SV1522-19190A033-F4
SN: 
Made in Vietnam



**CAUTION: SOLAR ELECTRIC
SYSTEM CONNECTED**



WARNING

DUAL POWER SUPPLY

SOURCES: UTILITY GRID
AND PV SOLAR
ELECTRIC SYSTEM

 **CAUTION** 
SOLAR POINT OF CONNECTION



CAUTION: SOLAR ELECTRIC
SYSTEM CONNECTED

WARNING
DUAL POWER SUPPLY
SOURCE: UTILITY GRID
AND PV SOLAR
ELECTRIC SYSTEM













19.3 mm2
C 19.3 mm2
11 6 P008
2 DE P001 DE 11 6 P008
19.3 mm2





















EATON

Handbook Series Switch
Compliance with UL 1558 and UL 1558-1
UL 1558-1-1010
Compliance with UL 1558-1
UL 1558-1-1010
Further information on this
product is available at www.eaton.com
or by contacting your distributor.

⚠ DANGER
ELECTRIC SHOCK HAZARD
TERMINALS ON THE LINE AND
LOAD SIDES MAY BE ENERGIZED
IN THE OPEN POSITION

⚠ PELIGRO
RIESGO DE GOLPE ELÉCTRICO
LOS TERMINALES EN LA LÍNEA Y
EN LA CARGA PUEDEN ESTAR
ENERGIZADOS EN LA POSICIÓN
ABIERTA



⚠ WARNING
ELECTRIC SHOCK HAZARD
TERMINALS ON THE LINE AND
LOAD SIDES MAY BE ENERGIZED
IN THE OPEN POSITION

**RAPID SHUTDOWN
SWITCH FOR
SOLAR PV SYSTEM**

AC DISCONNECT
PHOTOVOLTAIC SYSTEM
POWER SOURCE

RATED AC
OUTPUT CURRENT **40** AMPS

NOMINAL OPERATING
AC VOLTAGE **240** VOLTS

ON

OFF

HD wave

PV SYSTEM DC DISCONNECT

MAXIMUM VOLTAGE **480V**

MAXIMUM CIRCUIT CURRENT **27A**

MAXIMUM RATED OUTPUT
CURRENT OF THE CHARGE
CONTROLLER OR DC TO DC
CONVERTER (IF INSTALLED)

DC DISCONNECT

ON

RAPID SHUTDOWN
SWITCH FOR
SOLAR PV SYSTEM

solar edge

SOLAR PV SYSTEM
EQUIPPED WITH
RAPID SHUTDOWN



TURN SAFE SHUTDOWN SWITCH TO
THE 'OFF' POSITION TO SHUT DOWN
PV SYSTEM AND REDUCE
SHOCK HAZARD IN THE ARRAY

solar**edge**

HD **wave**

PV SYSTEM DC DISCONNECT

WARNING: TO MAINTAIN SAFETY, ALWAYS DISCONNECT THE PV SYSTEM BEFORE ANY MAINTENANCE OR REPAIR WORK. ALWAYS WEAR APPROPRIATE SAFETY GEAR AND FOLLOW ALL ELECTRICAL CODES AND REGULATIONS.

DC DISCONNECT

OFF



RAPID SHUTDOWN
SWITCH FOR
SOLAR PV SYSTEM

solar**edge**

PHOTOVOLTIC POWER SOURCE



SOLAR PV SYSTEM

OFF



AC DISCONNECT

PHOTOVOLTAIC SYSTEM
POWER SOURCE

RATED AC
OUTPUT CURRENT **42** AMPS

NOMINAL OPERATING
AC VOLTAGE **240** VOLTS



**CAUTION: SOLAR ELECTRIC
SYSTEM CONNECTED**



CL200 240V 3W TYPE C2M 30TA 1.0KN

222 3F6114 HGT

04 2-3
100V
60Hz



DUKE ENERGY PROGRESS

302 304 917

OpenWay
100V

WARNING

DUAL POWER SUPPLY

SOURCES: UTILITY GRID
AND PV SOLAR
ELECTRIC SYSTEM

EATON

WARNING: This device is not to be used for applications where the failure of the device could result in personal injury or property damage.

Model: 100-10-1000

For more information, visit www.eaton.com

For more information, visit www.eaton.com

For more information, visit www.eaton.com

For more information, visit www.eaton.com

For more information, visit www.eaton.com

For more information, visit www.eaton.com

For more information, visit www.eaton.com

For more information, visit www.eaton.com

For more information, visit www.eaton.com

For more information, visit www.eaton.com

For more information, visit www.eaton.com

For more information, visit www.eaton.com

For more information, visit www.eaton.com

For more information, visit www.eaton.com

For more information, visit www.eaton.com

For more information, visit www.eaton.com

For more information, visit www.eaton.com

For more information, visit www.eaton.com

For more information, visit www.eaton.com

For more information, visit www.eaton.com

For more information, visit www.eaton.com

For more information, visit www.eaton.com

For more information, visit www.eaton.com

For more information, visit www.eaton.com

For more information, visit www.eaton.com

For more information, visit www.eaton.com

For more information, visit www.eaton.com

For more information, visit www.eaton.com

For more information, visit www.eaton.com

For more information, visit www.eaton.com

For more information, visit www.eaton.com

For more information, visit www.eaton.com

For more information, visit www.eaton.com

For more information, visit www.eaton.com

For more information, visit www.eaton.com

For more information, visit www.eaton.com

WARNING

ELECTRIC SHOCK HAZARD
TERMINALS ON THE LINE AND
LOAD SIDES MAY BE ENERGIZED
IN THE OPEN POSITION

**RAPID SHUTDOWN
SWITCH FOR
SOLAR PV SYSTEM**

AC DISCONNECT

PHOTOVOLTAGIC SYSTEM
POWER SOURCE

RATED AC
OUTPUT CURRENT **40** AMPS
NOMINAL OPERATING
AC VOLTAGE **120** VOLTS

ON
OFF

ON
OFF



DANGER

WIRE

WIRE

WIRE

WIRE

WIRE

WIRE

WIRE

WIRE

WIRE

WIRE

WIRE

WIRE

WIRE

WIRE

WIRE

WIRE

WIRE

WIRE

WIRE

WIRE

WIRE

WIRE

WIRE

WIRE

WIRE

WIRE

WIRE

WIRE

WIRE

WIRE

WIRE

WIRE

WIRE



KLEIN TOOLS

CL110

Ω OFF

270A~

200V
400A~

V_m

V~

OFF

2000 Counts
400A AC Digital Clamp Meter

13.2

0

RANGE

MAX

CAT III 600V
- COM ▲ + VΩ



KLEIN TOOLS

CL110

Ω OFF

2/20A ~

300V
400A ~

V_m

V_~

OFF

2000 Counts
600A AC Digital Clamp Meter



Q HOLD MAX

CAT II 600V
- COM + V Ω







KLEIN
TOOLS

10 Ω OFF

20A~

100V
200A~

Vm

V~

OFF

2000 Counts
400A AC Digital Clamp Meter

08.1

OFF

RANGE

MAX

CAT III 600V
COM Δ V Ω



solar edge

240V

L1

L2

N

L2

L1

L2

L1

L2

L1

L2

L1

L2

L1

L2

L1

L2

L1

L2

L1

L2

L1

L2

L1

L2

L1

L2

L1

L2

L1

L2

L1

L2

L1

L2

L1

L2

L1

L2

L1

L2

L1

L2

L1

L2

L1

L2

L1

L2

L1

L2

L1

L2

L1

L2

L1

L2

L1

L2

L1

L2

L1

L2

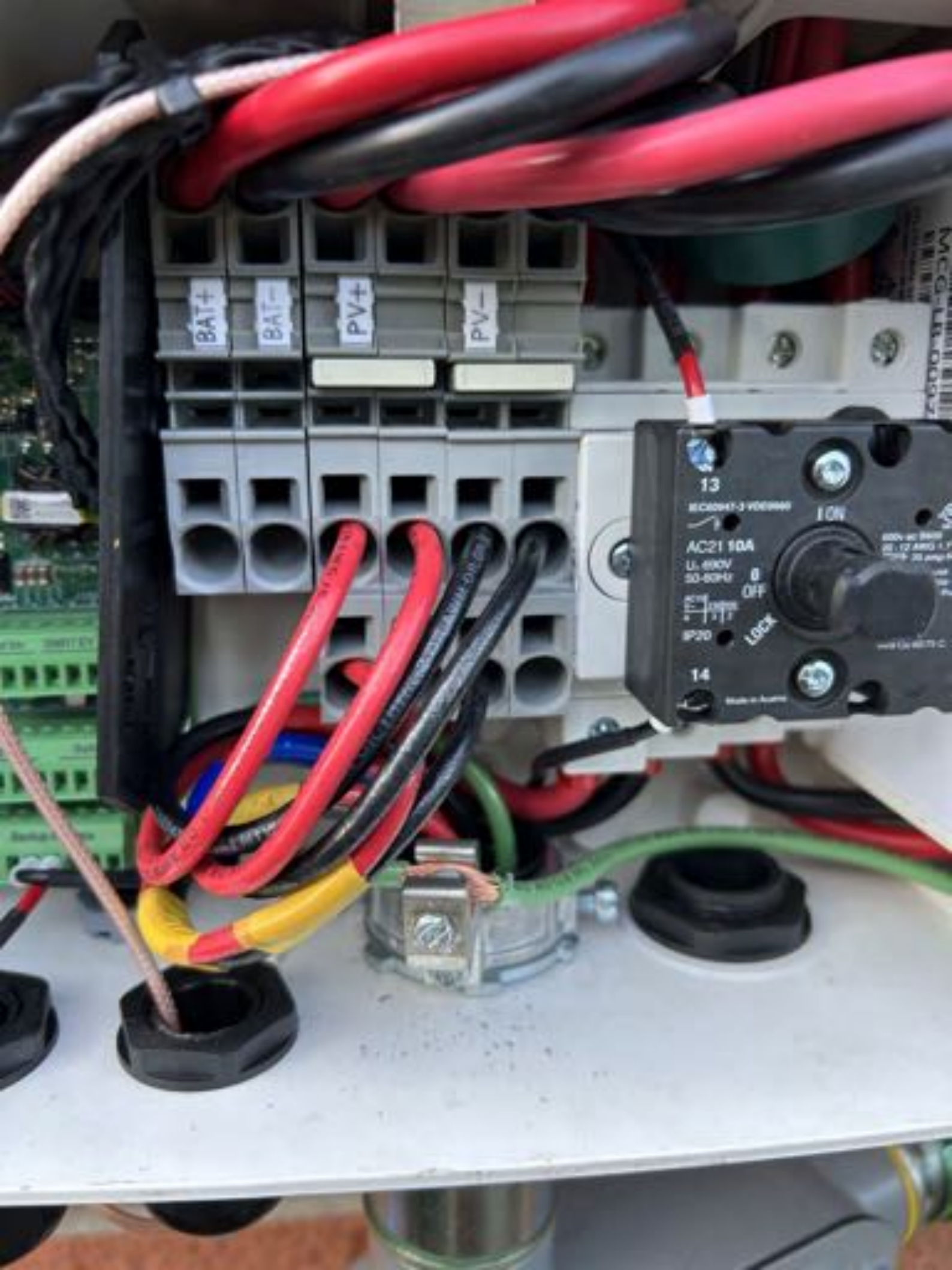
L1

L2

L1

E401111
316-SS/316L









solar edge

HD wave

MAXIMUM RATED OUTPUT
CURRENT OF THE CHARGE
CONTROLLER OR DC TO DC
CONVERTER (IF INSTALLED)







Edison

TYPE 6X6L6
VACUUM TUBE
CLASS 6X6L6

ECNR6L

500Ma or less
100 W or more
100 MHz or more

Edison

TYPE 6X6L6
VACUUM TUBE
CLASS 6X6L6

ECNR6L

500Ma or less
100 W or more
100 MHz or more



















54.2 net

ALLOW 24/24 IN THIS LOW VOLTAGE ONLY
FOR SERVICE ONLY
CLEAR ENERGY SERVICES
100 704 917

ClearView
1000



