















REC
REC Alpha Pure-R Series
REC410AA Pure-R
Serial Number: FBB-700510794

Power Output (Pmax)
Power Production Tolerance
Rated Voltage (Vmp)
Rated Current (Imp)
Open Circuit Voltage (Voc) (+/- 3%)
Short Circuit Current (Isc) (+/- 3%)
Maximum System Voltage (Vsys)
Maximum Series Fuse (DC) (UL)
Maximum Series Fuse (DC) (IEC)
Design Load
Maximum Test Load
(Values at STC: 1000 W/m²AM 1.5, cell temp 25°C)
+7000 / -2666 Pa*
25 A
1000 V
8.81 A
8.81 A
8.92 V
8.30 A
49.4 V
+/- 3%
0/+10 W

Conforms to:
UL 9540
IEC 61730-1/-2
UL File No. E1730-1/-2
UL File No. E1730-2
UL File No. E1730-2*

Intertek
5077724

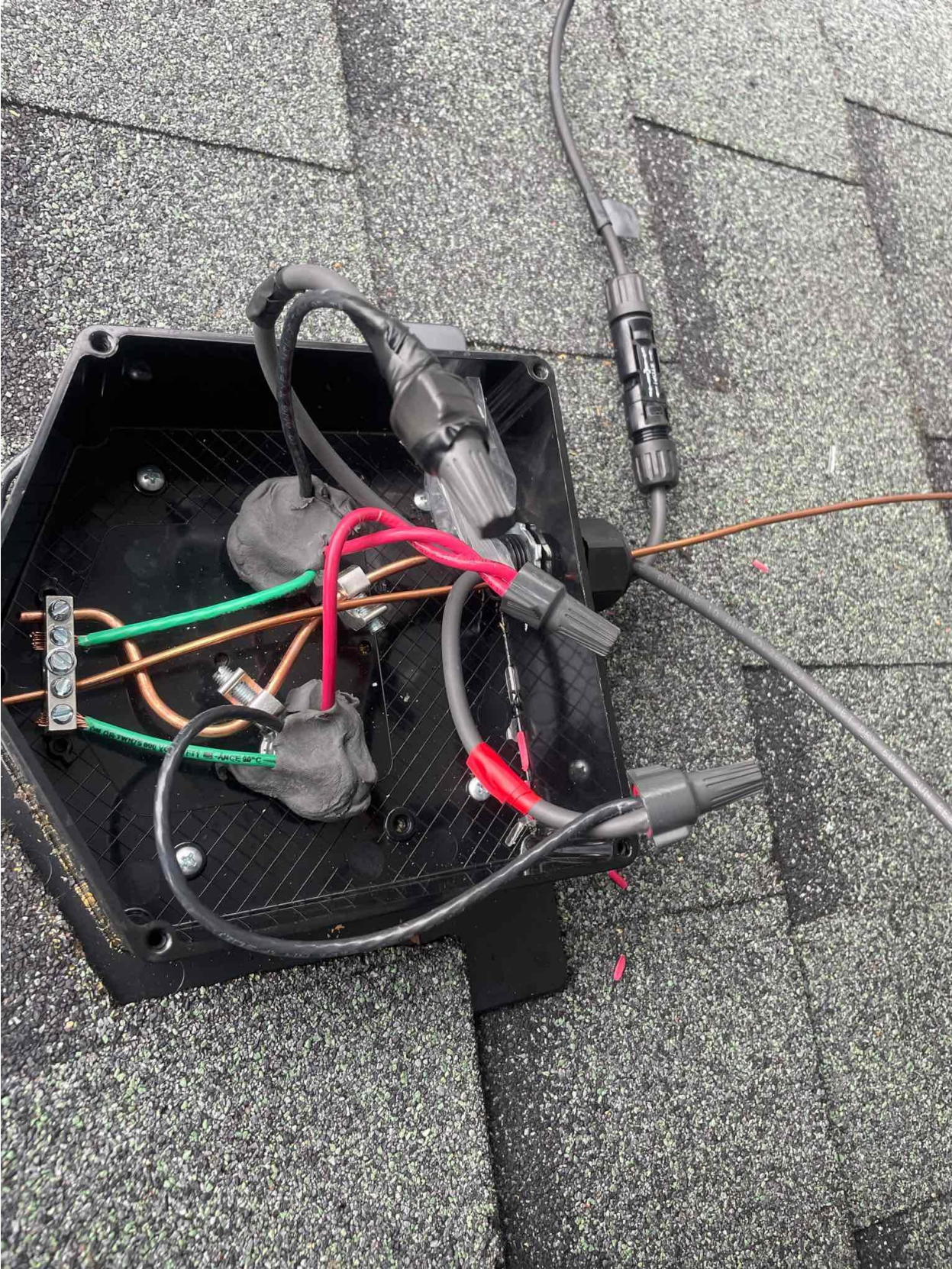
CE
UK
CA

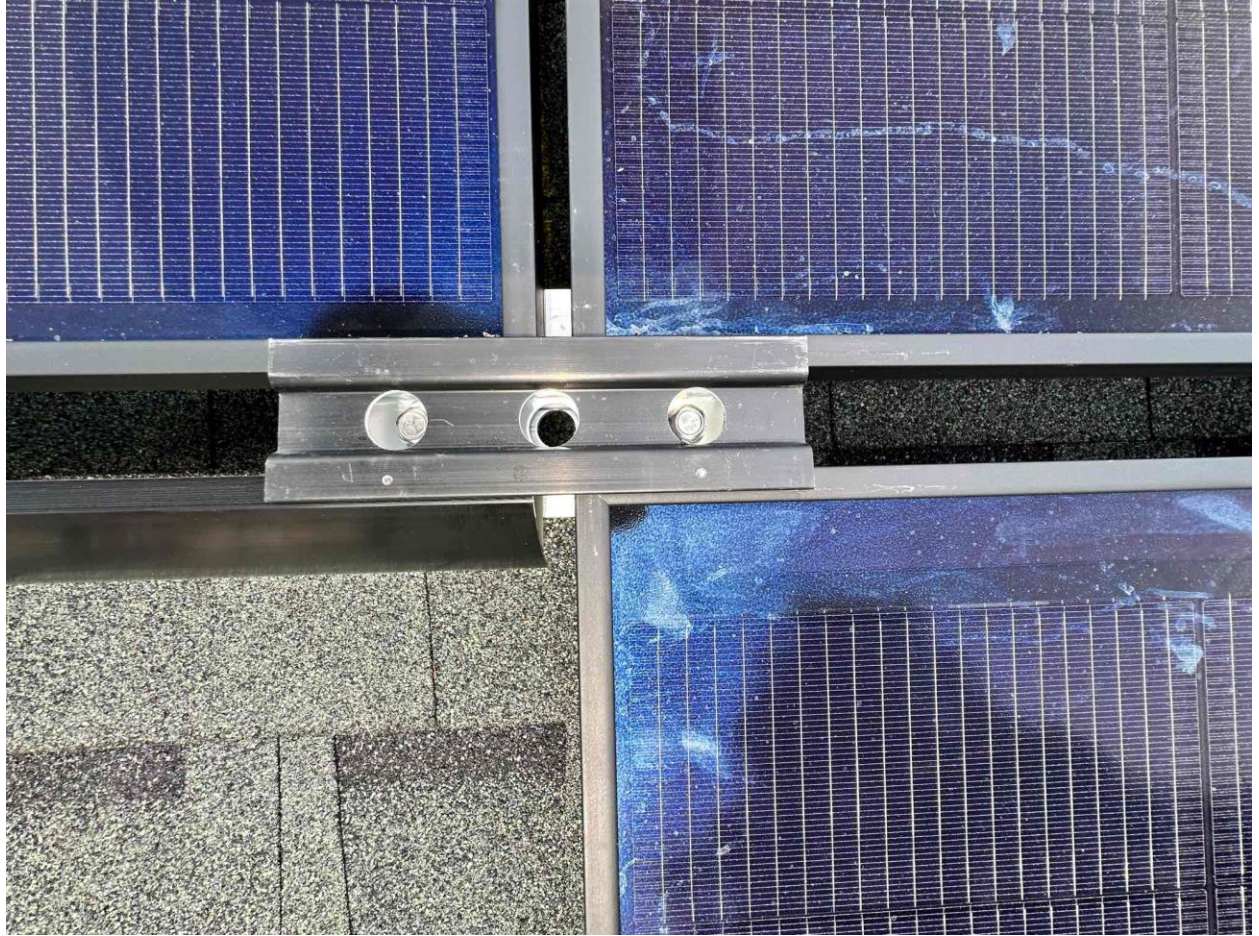
Manufactured: 13.05.2023

Warning electrical hazard. This module produces electricity when exposed to light.
CAUTION: DO NOT DISCONNECT UNDER LOAD
Avertissement: Risque de choc électrique. Ce module solaire produit de l'électricité lorsqu'il est exposé à la lumière.
ATTENTION: NE PAS DECONNECTER SOUS TENSION
For field connections, use min. 4 mm² 12 AWG UL PV wires insulated for a min. of 90°C
Made in Singapore by REC SOLAR PTE. LTD.
20 TUAS SOUTH AVENUE 14, SINGAPORE 637312, SINGAPORE
EU/Europe Contact: REC Solar EMEA GmbH
Balanstr. 71a, 81541 Munich, Germany, Tel: +49 (0)89-442-38590
For other regions see: www.recgroup.com/contact





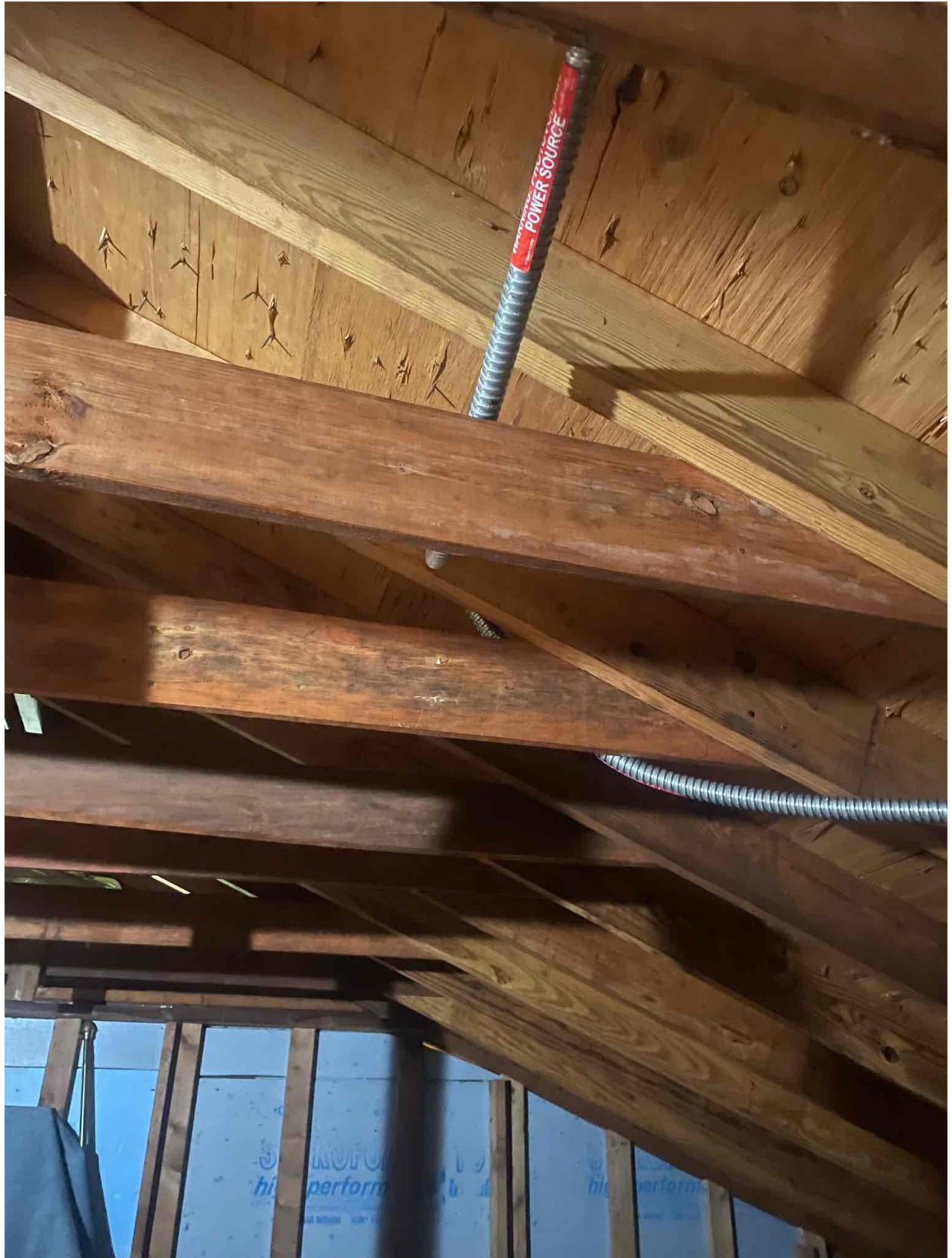


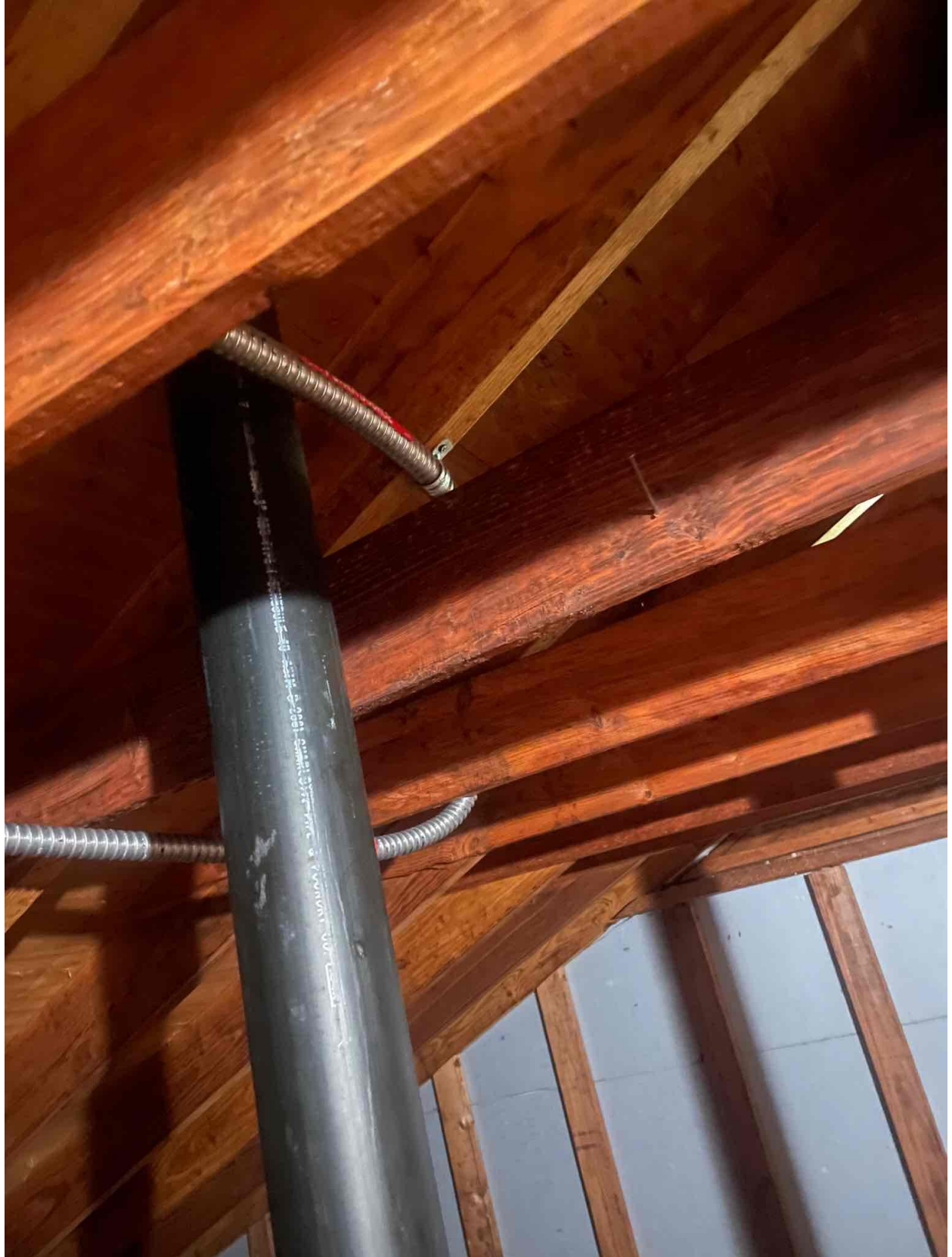




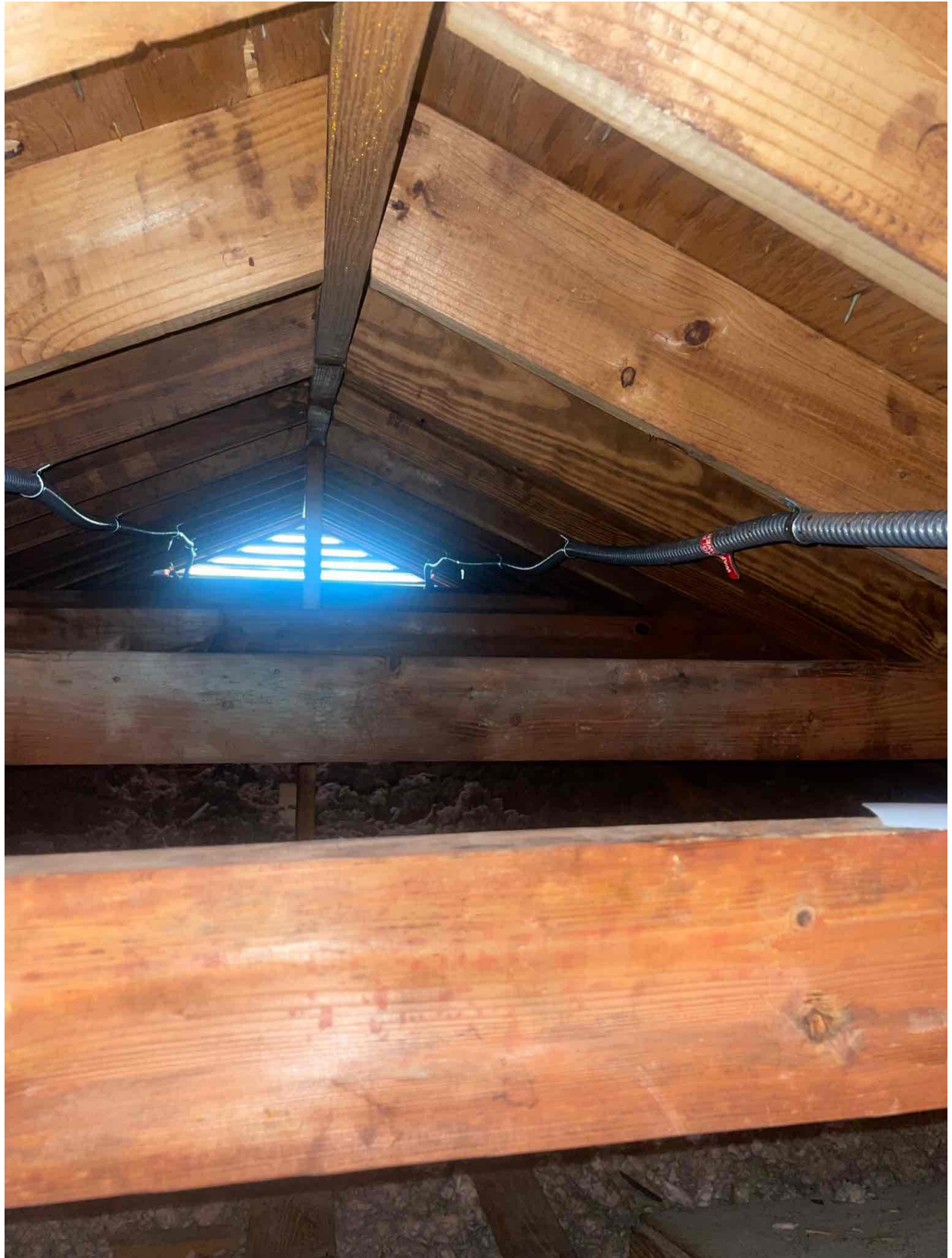


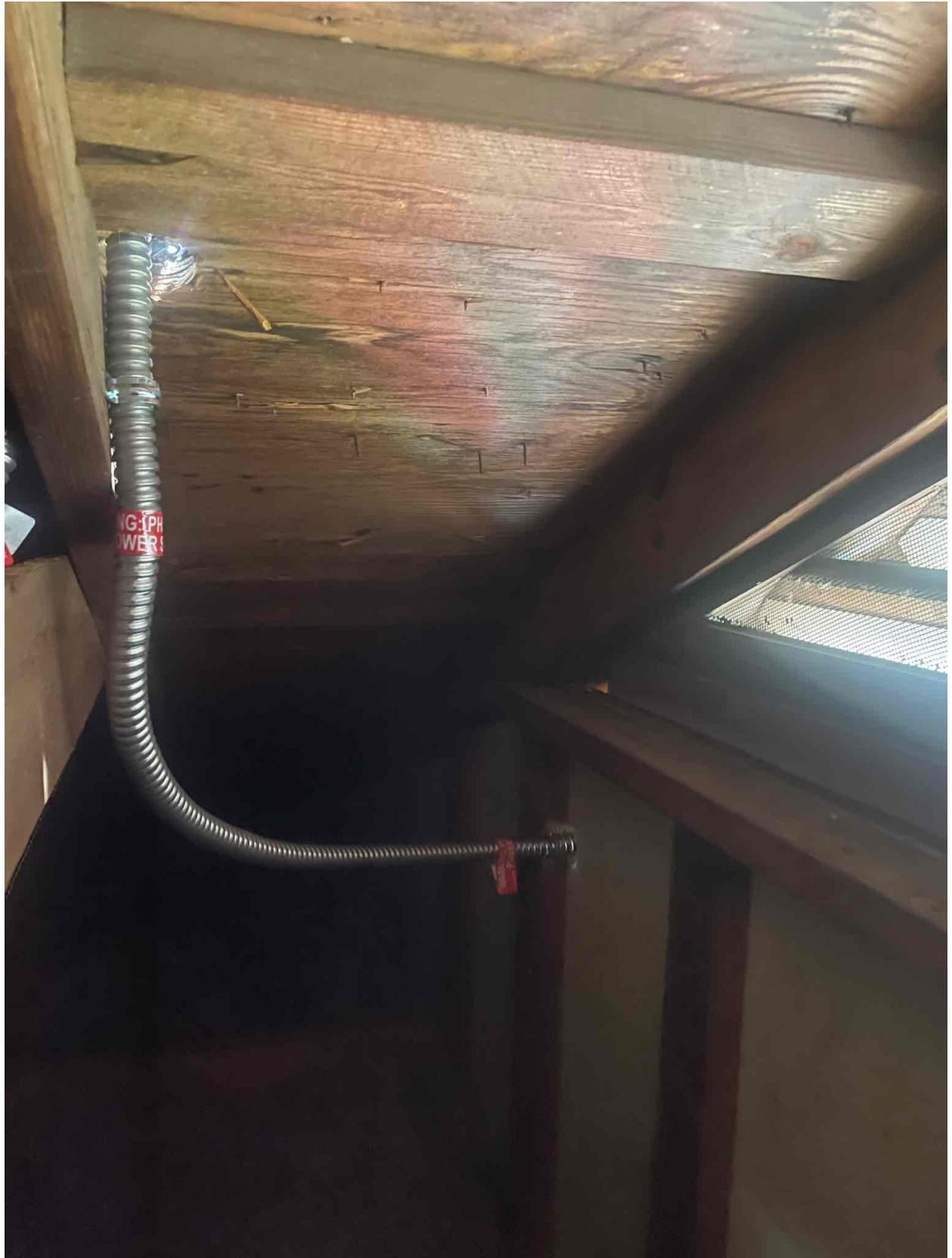
REC410AA Pure-R
Pmax: 410 W
Imp: 8.30 A
Vmpp: 49.4 V















solar edge
PHOTOVOLTAIC RAPID
OWN SYSTEM

solar edge SE6000H - US
Grid Support Utility Interactive
Non-Isolated Photovoltaic Inverter

Operating Voltage Range
Max Input Current
Max Continuous Output Power
Voltage Min - Nom - Max
Max Continuous Output Current
Max Output Fault Current
Max Utility Requested Current
Frequency Min, Nom - Max
Output Power Factor
Max Ambient Temperature
Enclosure
With integrated ground fault protection per NEC 940.35 (c)
Type 1 Protection Arc-Fault Circuit- Protection
CIRCUITS WITH SUPPLEMENTAL WIRING CONNECTION REQUIREMENTS
WiFi - FI Password: 9N4Nmb
Activation: p+3U E+ +0 S+07 XIAT D6+1 Vhre D/c =

500W@ 208V 600W@ 240V
183 - 208 - 250V@
211 - 240 - 260V@
18.5A@
270 - 480V@
18.5A@
24A@ 208V 25A@ 240V
72A@
0.9A@
59.9 - 60.0 - 60.5Hz
+/- 0.85 - 1
60 C
1965 / Type 3N

WiFi MAC:
84:D6:C5:60:18:AD
ZigBee MAC:

 C US
Intertek
4004590

PN: SE6000H - US000BE14
SN: SMT223 - 07412BFEE - 33







ICCID: 8901882004766733873F



Data plan will start on the earlier of:
- Kit installation date (first transmission)
- Date: 9-Aug-23

Made in China

solaredge

Cellular Plug-In 5y plan, SetApp, Resl, SP4, US



QTY: 1

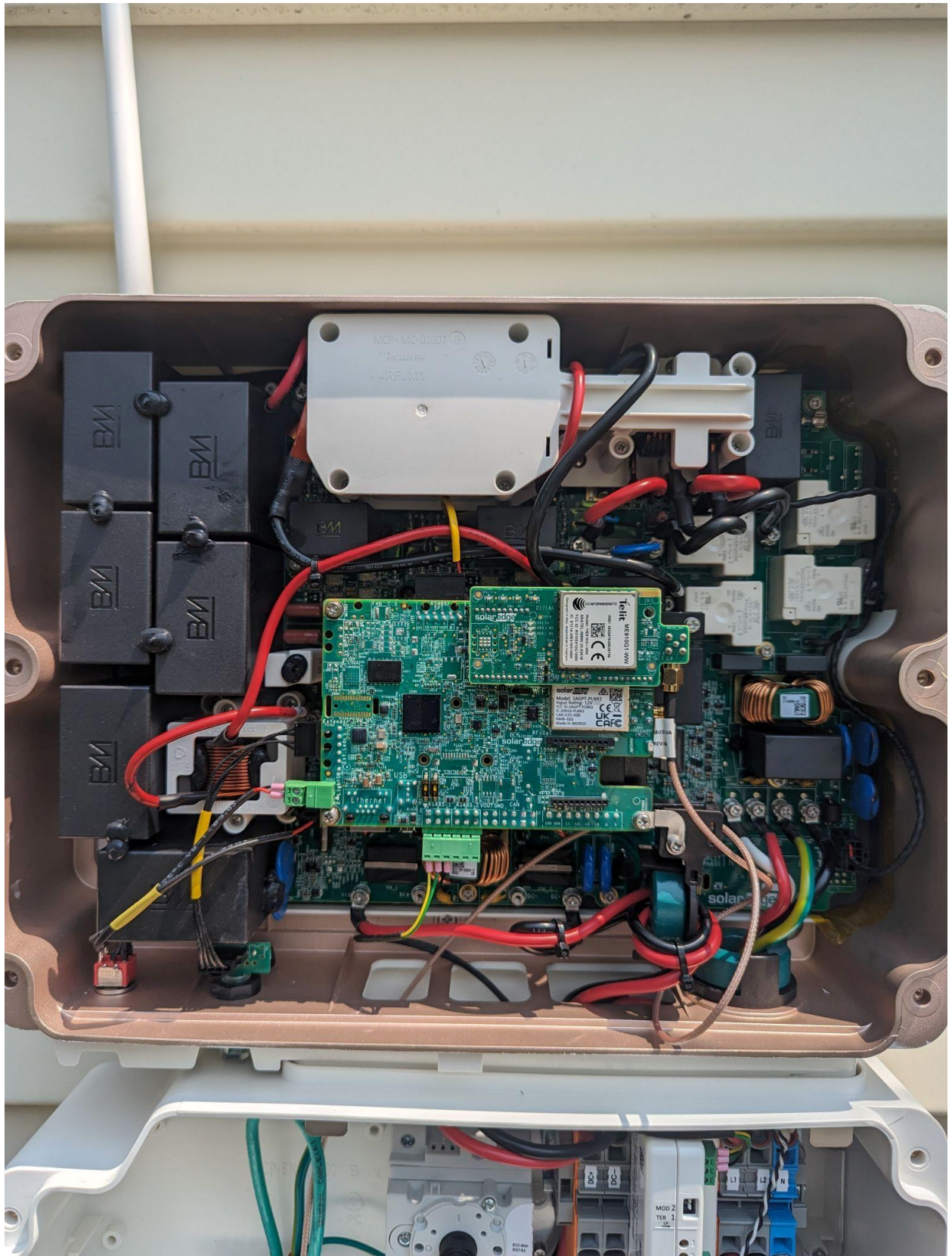
PN: CELL-B-R05-US-S-S2

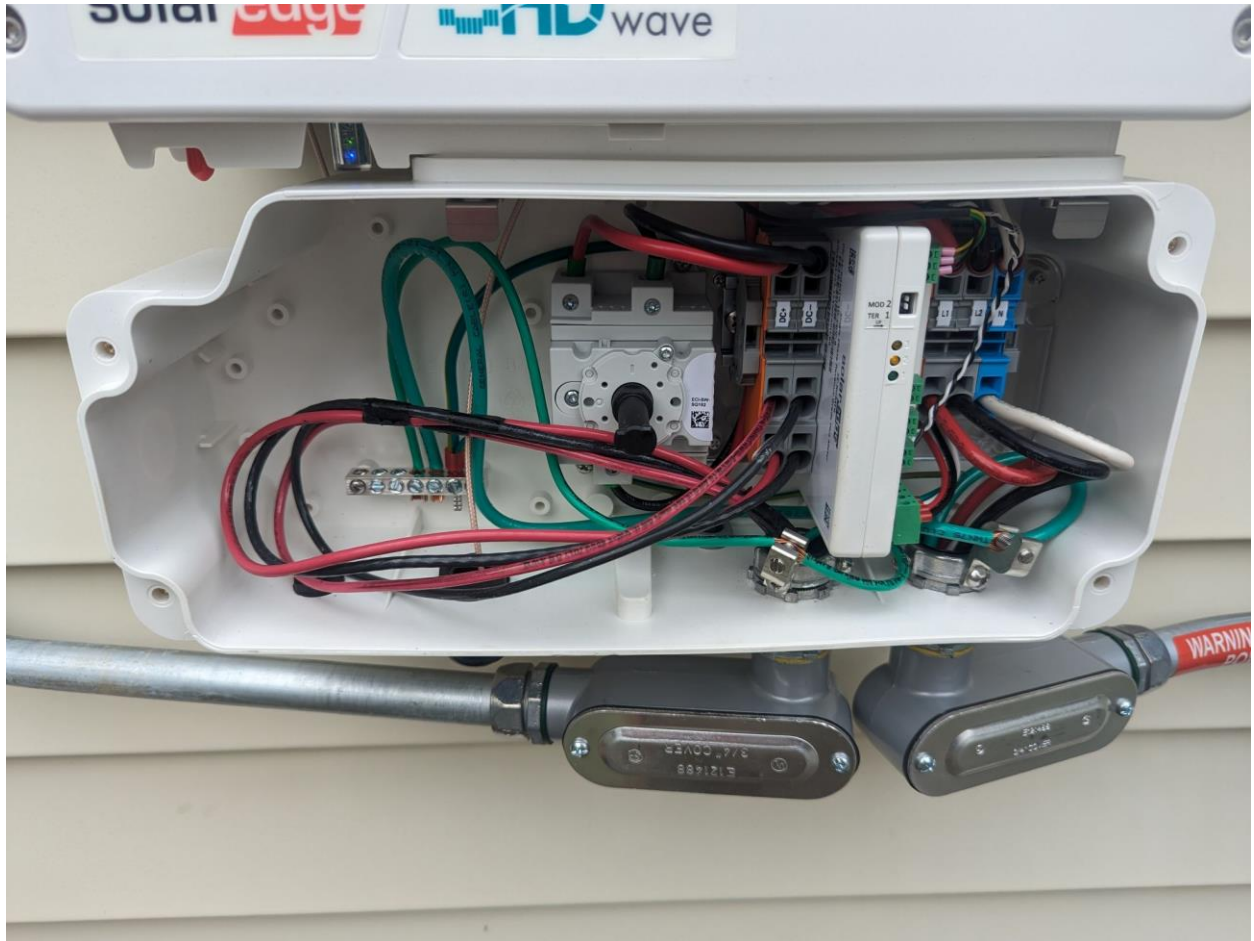


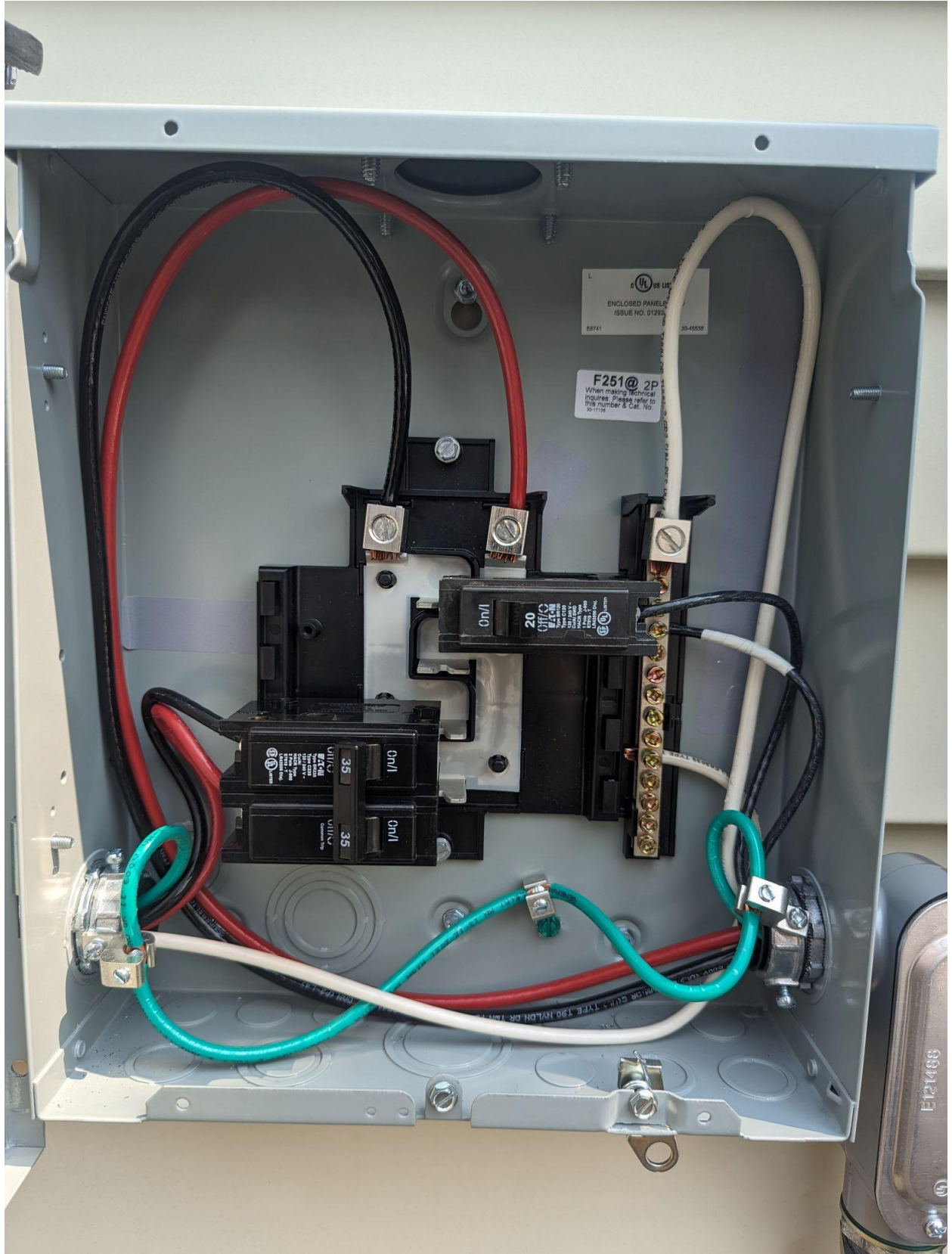
SN: SJ1122-1702BSD3A-32



Made in China



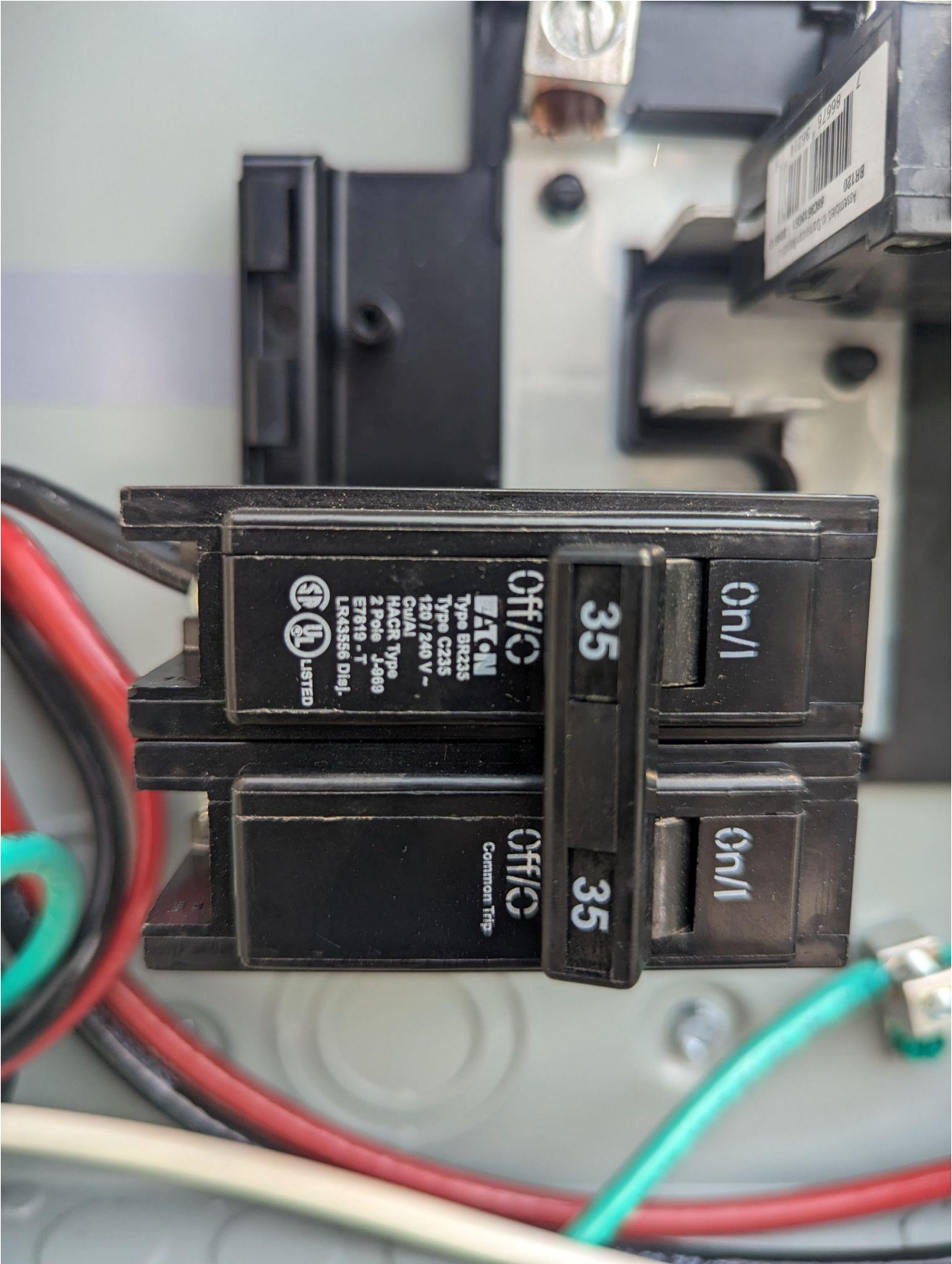




UL LISTED
ENCLOSED PANELS
ISSUE NO. 01292
88741 35-45038

F251@ 2P
When making technical inquiries, please refer to this number & Cat. No. 35-1132

E121468



UL LISTED

Eaton
Type BR235
Type C235
120/240 V ~
C/UL
HACR Type
2 Poles J-889
ET815 - T
LR43556 Dial.

OFF/O

Common Trips
OFF/O

35

35

On/I

On/I

Assembled in Dominican Republic
BR120
802800001
7 86670 9511

SOLAR PV BREAKER
BREAKER IS BACKFEED
DO NOT RELOCATE
JCDLABELS.COM 02-070

35 35

On/I On/I

OFF/O **OFF/O**

EATON
Type BR235
Type C235
120 / 240 V ~
C/UL/AL
HACR Type
2 Pole 1-069
E7819 - T
LXK3566 Dial.

 LISTED

