

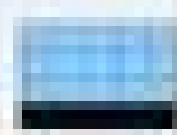




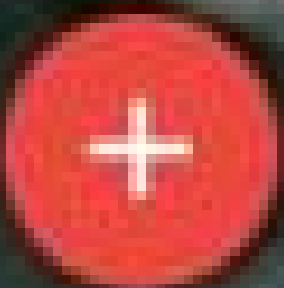




1/1

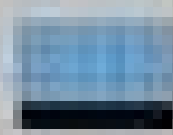


26/26





v1



26/26

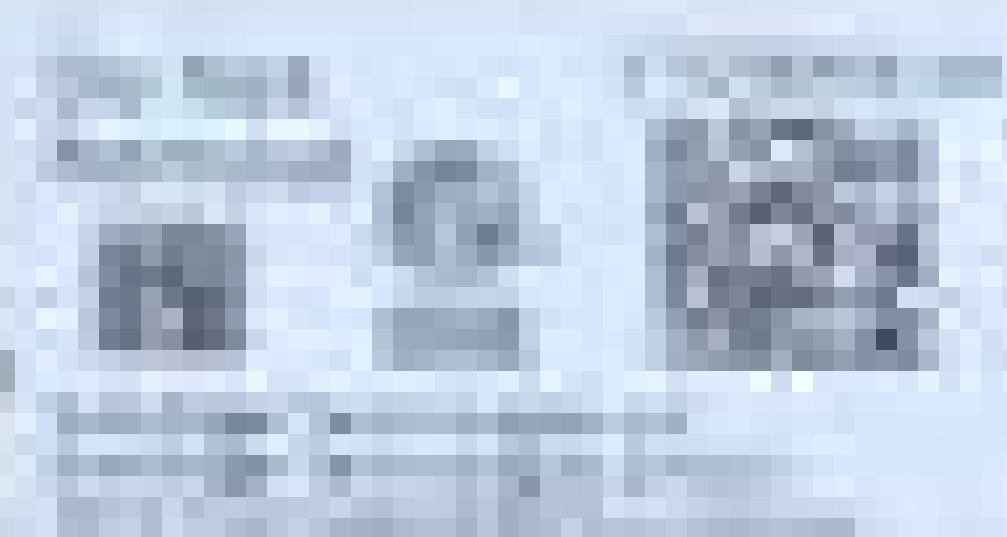
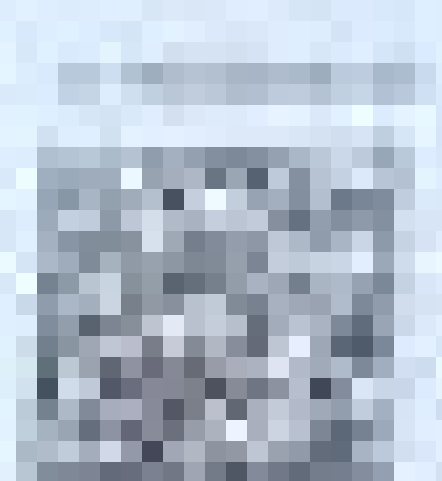
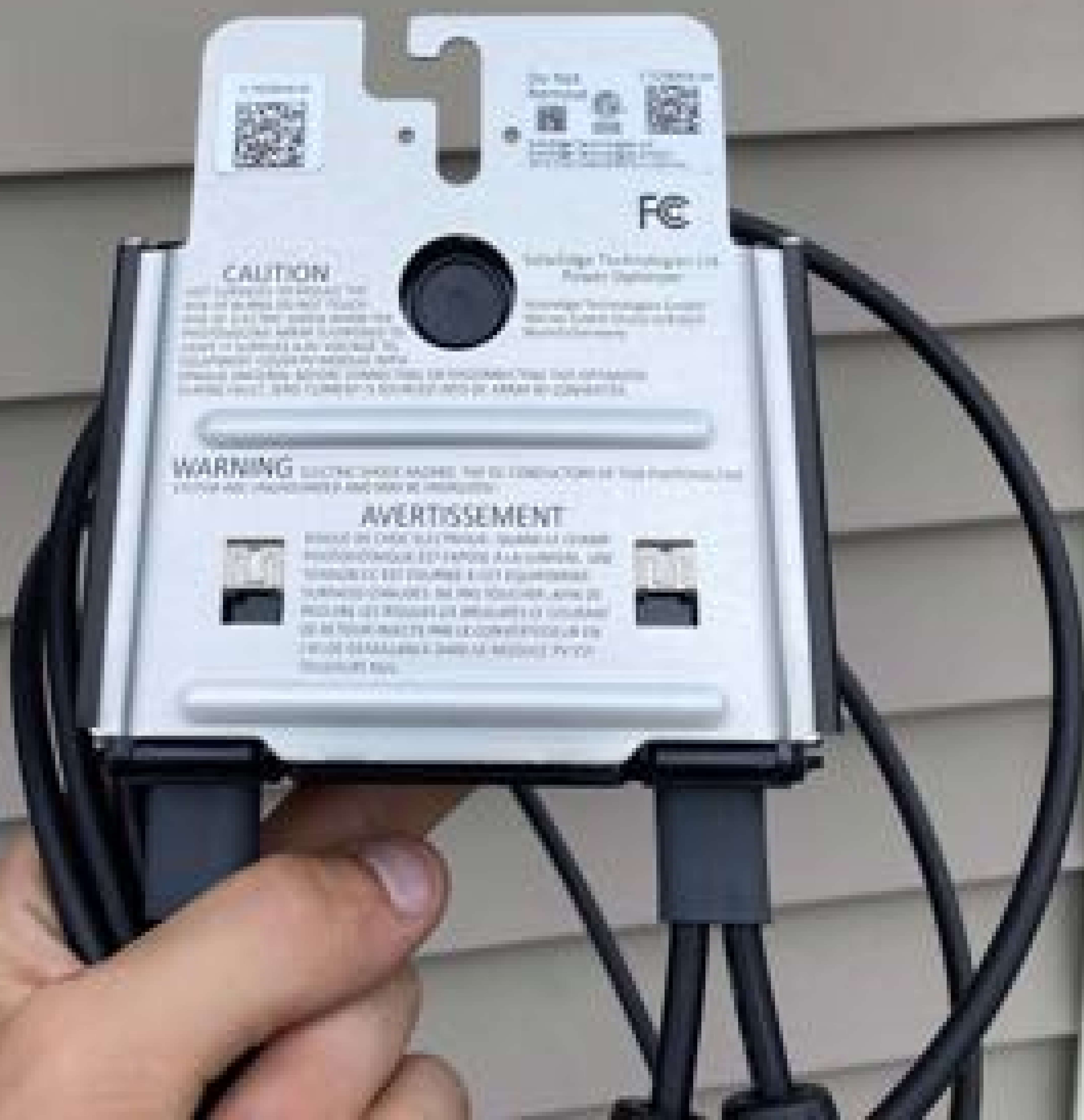
Successfully published
on server

Ok





55



FC

CAUTION

Use only the bulb base designed for use with the SmartThings Hub. Do not use other bulb bases. The bulb base is not designed to be used in other bulb bases. Do not use the bulb base in other bulb bases. Do not use the bulb base in other bulb bases. Do not use the bulb base in other bulb bases.

WARNING ELECTRICALLY SHOCK: THE DISASSEMBLY OF THIS PRODUCT CAN BE DANGEROUS AND MAY BE FATAL.

AVERTISSEMENT

NE PAS DÉMONTÉR LA BASE DE LA BOÛTE À BULBES. LE DÉMONTAGE DE LA BOÛTE À BULBES PEUT ÊTRE DANGEREUX ET PEUT ÊTRE FATAL. NE PAS DÉMONTÉR LA BOÛTE À BULBES. LE DÉMONTAGE DE LA BOÛTE À BULBES PEUT ÊTRE DANGEREUX ET PEUT ÊTRE FATAL. NE PAS DÉMONTÉR LA BOÛTE À BULBES. LE DÉMONTAGE DE LA BOÛTE À BULBES PEUT ÊTRE DANGEREUX ET PEUT ÊTRE FATAL.



STRUCTURAL BEAMS
 10'-0" x 12'-0"
 12'-0" x 12'-0"
 14'-0" x 12'-0"
 16'-0" x 12'-0"
 18'-0" x 12'-0"
 20'-0" x 12'-0"
 22'-0" x 12'-0"
 24'-0" x 12'-0"
 26'-0" x 12'-0"
 28'-0" x 12'-0"
 30'-0" x 12'-0"
 32'-0" x 12'-0"
 34'-0" x 12'-0"
 36'-0" x 12'-0"
 38'-0" x 12'-0"
 40'-0" x 12'-0"
 42'-0" x 12'-0"
 44'-0" x 12'-0"
 46'-0" x 12'-0"
 48'-0" x 12'-0"
 50'-0" x 12'-0"
 52'-0" x 12'-0"
 54'-0" x 12'-0"
 56'-0" x 12'-0"
 58'-0" x 12'-0"
 60'-0" x 12'-0"



Handwritten signature and notes at the bottom of the plan.

| ROOM NO. | ROOM NAME | AREA (SQ. FT.) | PERIMETER (LINEAR FT.) | NO. OF WINDOWS | NO. OF DOORS | NO. OF WALLS | NO. OF CORNERS |
|----------|-----------|----------------|------------------------|----------------|--------------|--------------|----------------|
| 101 | OFFICE | 120 | 120 | 2 | 1 | 4 | 4 |
| 102 | OFFICE | 120 | 120 | 2 | 1 | 4 | 4 |
| 103 | OFFICE | 120 | 120 | 2 | 1 | 4 | 4 |
| 104 | OFFICE | 120 | 120 | 2 | 1 | 4 | 4 |
| 105 | OFFICE | 120 | 120 | 2 | 1 | 4 | 4 |
| 106 | OFFICE | 120 | 120 | 2 | 1 | 4 | 4 |
| 107 | OFFICE | 120 | 120 | 2 | 1 | 4 | 4 |
| 108 | OFFICE | 120 | 120 | 2 | 1 | 4 | 4 |
| 109 | OFFICE | 120 | 120 | 2 | 1 | 4 | 4 |
| 110 | OFFICE | 120 | 120 | 2 | 1 | 4 | 4 |
| 111 | OFFICE | 120 | 120 | 2 | 1 | 4 | 4 |
| 112 | OFFICE | 120 | 120 | 2 | 1 | 4 | 4 |
| 113 | OFFICE | 120 | 120 | 2 | 1 | 4 | 4 |
| 114 | OFFICE | 120 | 120 | 2 | 1 | 4 | 4 |
| 115 | OFFICE | 120 | 120 | 2 | 1 | 4 | 4 |
| 116 | OFFICE | 120 | 120 | 2 | 1 | 4 | 4 |
| 117 | OFFICE | 120 | 120 | 2 | 1 | 4 | 4 |
| 118 | OFFICE | 120 | 120 | 2 | 1 | 4 | 4 |
| 119 | OFFICE | 120 | 120 | 2 | 1 | 4 | 4 |
| 120 | OFFICE | 120 | 120 | 2 | 1 | 4 | 4 |

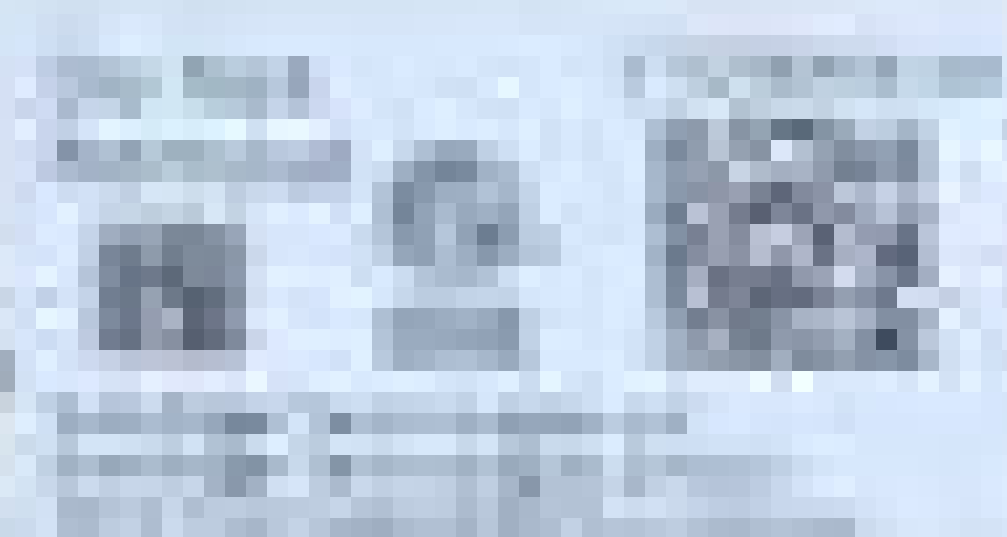


TOP T

SOLAR PANELS



55



FC

CAUTION

Use only the bulb base designed for use with the SmartThings™ Hub. Do not use any other bulb base. The bulb base is not designed to be used in a standard light fixture. Do not use the bulb base in a standard light fixture. Do not use the bulb base in a standard light fixture. Do not use the bulb base in a standard light fixture.

WARNING ELECTRICALLY RATED. THE DISCONTINUATION OF THE POWER LINE CIRCUIT AND PROTECTIVE AND MAY BE REQUIRED.

AVERTISSEMENT

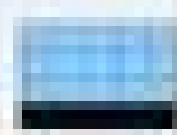
NE PAS UTILISER QUE LA BASE DE LA BOULBE CONÇUE POUR ÊTRE UTILISÉE AVEC UN HUB. NE PAS UTILISER QUE LA BASE DE LA BOULBE CONÇUE POUR ÊTRE UTILISÉE AVEC UN HUB. NE PAS UTILISER QUE LA BASE DE LA BOULBE CONÇUE POUR ÊTRE UTILISÉE AVEC UN HUB. NE PAS UTILISER QUE LA BASE DE LA BOULBE CONÇUE POUR ÊTRE UTILISÉE AVEC UN HUB.



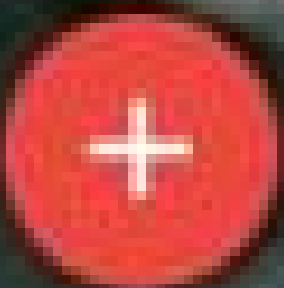
TOP T
SOLAR



1/1

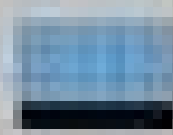


26/26





v1



26/26

Successfully published
on server

Ok















176722852-F8

Do Not Remove






176722852-F8

SolarEdge Technologies Ltd
SolarEdge Technologies GmbH
Ammer-Strasse 10a D-82031 Ammerlaching

FC

CAUTION

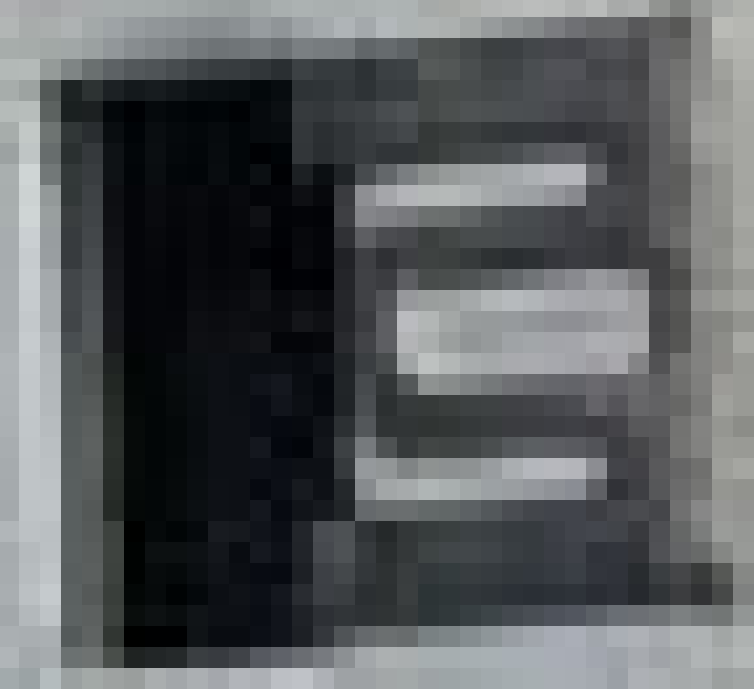
HOT SURFACES TO REDUCE THE RISK OF BURNS, DO NOT TOUCH. RISK OF ELECTRIC SHOCK WHEN THE PHOTOVOLTAIC ARRAY IS EXPOSED TO LIGHT. IT SUPPLIES A DC VOLTAGE TO EQUIPMENT CONNECTED TO THE OPTIMIZER. MATERIAL BEHIND CONNECTING OR DISCONNECTING THIS OPTIMIZER DURING FAULT ZERO CURRENT IS SUBJECT INTO DC ARRAY BY CONVERTER.



SolarEdge Technologies Ltd
Power Optimizer
SolarEdge Technologies GmbH
Werner-Edert-Strasse 6/81829
Munich/Germany

WARNING

SHUTTING DOWN HELD. THE DC CONNECTIONS OF THIS PHOTOVOLTAIC SYSTEM ARE UNINSULATED AND MAY BE ENERGIZED.



AVERTISSEMENT

ARRÊT DE L'ÉLECTRICITÉ EN COURS. LES LIÈRES DE BRANCHEMENT DE CE SYSTÈME PHOTOVOLTAÏQUE SONT NON ISOLÉS ET PEUVENT ÊTRE ÉNERGÉTIQUES.

IL NE FAUT PAS TOUCHER, PENDANT LE DÉMONTAGE, LES LIÈRES DE BRANCHEMENT DE CE SYSTÈME PHOTOVOLTAÏQUE. LE SYSTÈME PHOTOVOLTAÏQUE FOURNIT UNE TENSION CONTINUE EN COURS DE DÉMONTAGE. LE CONTACT AVEC LES LIÈRES DE BRANCHEMENT DE CE SYSTÈME PHOTOVOLTAÏQUE PEUT ÊTRE ÉNERGÉTIQUE.

















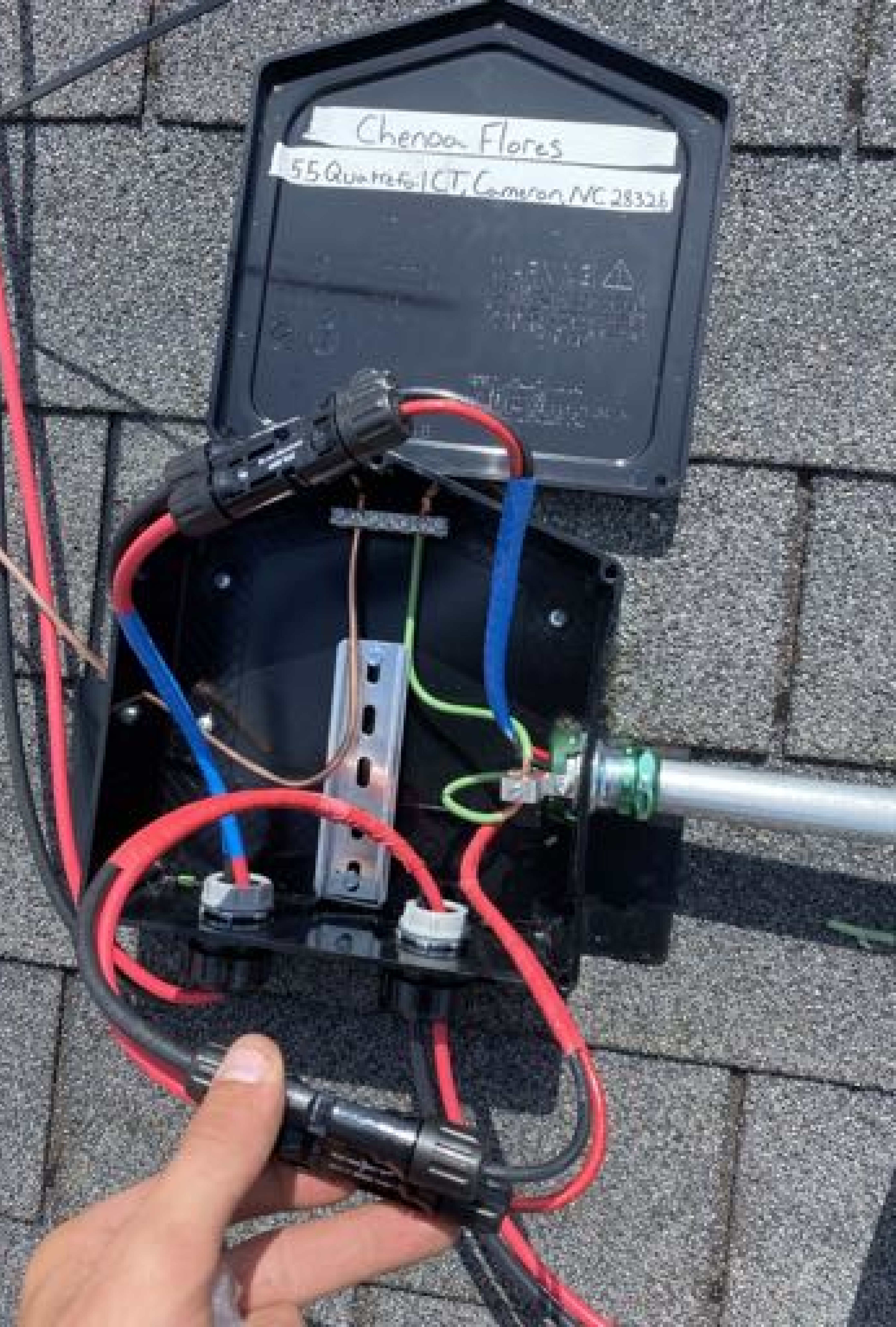




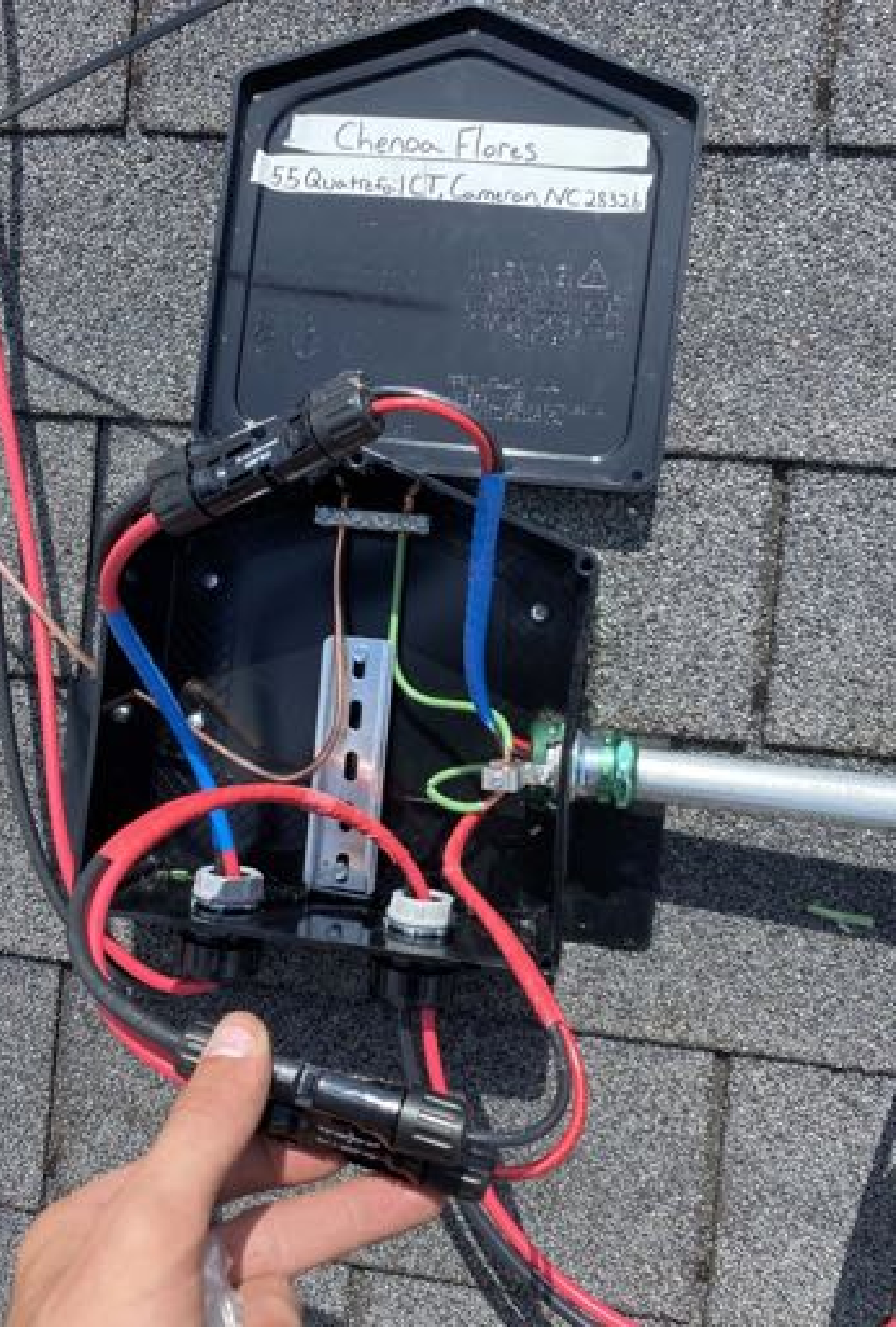


Chenoa Flores

55 Quince CT, Cameron NC 28326



Chenaa Flores
55 Quattro CT, Cameron, NC 28326















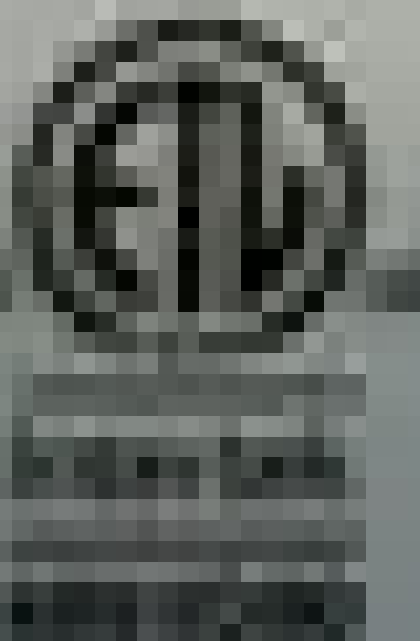


solar  **SR5000H - US**
Grid Support Utility Interactive
Non-Isolated Photovoltaic Inverter

| | |
|---|-------------------------|
| Operating Voltage Range | 170 - 280Vac |
| Max. Inlet Current | 10.0Amp |
| Max. Continuous Output Power | 5000VA (5000W) @ 230VAC |
| Output 0V - 240V - 240V | 0V - 240V - 240VAC |
| Max. Continuous Output Current | 21.7A (21.7A) @ 230VAC |
| Max. Output Peak Current | 27.0A (27.0A) @ 230VAC |
| Max. Utility Connected Current | 10.0Amp |
| Frequency 50Hz - 60Hz - 60Hz | 50Hz - 60Hz - 60Hz |
| Output Power Factor | 0.9 - 1.0 PF - 1 |
| Max. Ambient Temperature | 40°C |
| Enclosure | IP65 / Type III |
| EMC Integrated ground fault protection (GFI) | 0V - 240V - 240V |
| Type - Photovoltaic (PV) Grid-Tied - Inverter | |

UL - E1 PowerQual, R400002
 Antinotes EMCs EN50438, IEC 61000-3-2

WiFi MAC:
 BA:DE:ED:48:42:88
 ZigBee MAC:



PN: SR5000H - US00001.14
 SN: 070123 - 07000001 - 08


solar 



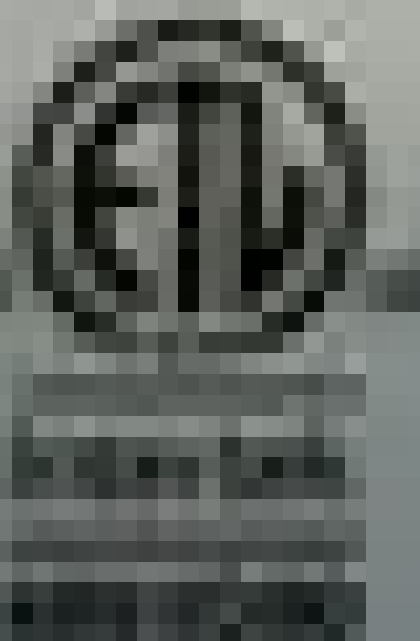
PHOTOVOLTAIC RAPID
SHUTDOWN SYSTEM

solar  **SR5000H - US**
Grid Support Utility Interactive
Non-Isolated Photovoltaic Inverter

| | |
|--|-------------------------|
| Operating Voltage Range | 170 - 280Vac |
| Max. Inlet Current | 10.0Amp |
| Max. Continuous Output Power | 5000VA (2000W) @ 230VAC |
| Output 0V - 240V - 240V | 0V - 240V - 240VAC |
| Max. Continuous Output Current | 21.7A (20A) @ 230VAC |
| Max. Output Peak Current | 27.0A (25A) @ 230VAC |
| Max. Utility Connected Current | 20A |
| Frequency 50Hz - 60Hz - 60Hz | 50Hz - 60Hz - 60Hz |
| Output Power Factor | 0.9 - 1.0 PF - 1 |
| Max. Ambient Temperature | 40°C |
| Enclosure | IP65 / Type 3R |
| EMC Integrated ground fault protection (GFI) | 0V - 240V - 240V |
| Type - Photovoltaic (PV) Grid-Tie - Inverter | |

UL - E1 PowerQual R422002
 Antinuclear EMCs EN50178 Max 4000 Joules 20 -

WiFi MAC:
 BA:DE:ED:48:42:88
 ZigBee MAC:

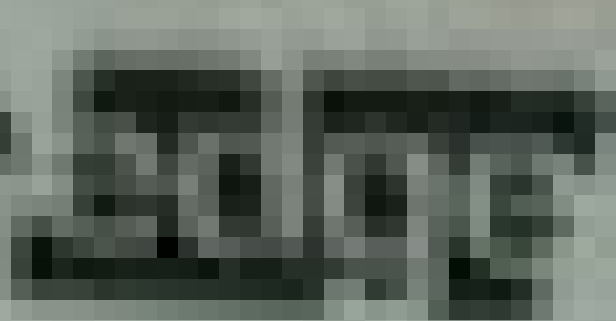


PN: SR5000H - US/US/US/14
 SN: 070123 - 07000001 - 08


solar 



PHOTOVOLTAIC RAPID
SHUTDOWN SYSTEM

solar 

StorEdge Connection Unit



Max DC Voltage (PV, Battery)

600 Vdc

Max DC Current (PV)

11 Adc

Max Continuous DC Current (Battery)

11 Adc

Max AC Voltage

250 Vac

AC Single Phase Frequency

50/60 Hz

Max AC Current (Grid)

40 Adc

For more details refer to the installation guide

Patent marketing notice: see WWW.SOLAREGE.COM/patent

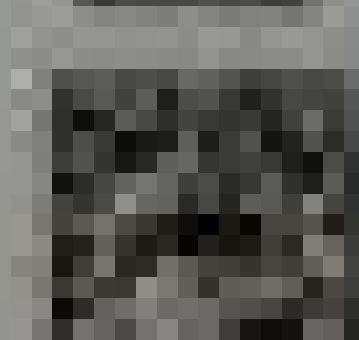
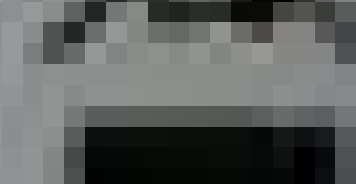
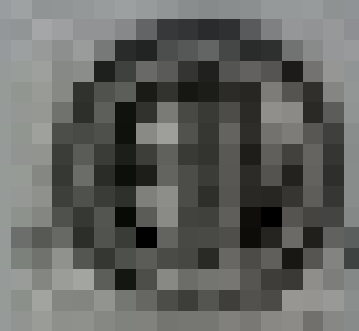
DCC-1PH-US-PH-F-1

PN: 

SV0123-191917E02-A2

SN: 

Made in Vietnam



solar 

StorEdge Connection Unit



Max AC Current (Smart EV Charger)

40 Adc

Max Continuous Output Power (Smart EV Charger)

1000W

Ambient Temperature:

-40°C - 60°C

Enclosure Rating:

IP65 / Type II

For more details refer to the installation guide


Patent marketing notice: see WWW.SOLAREGE.COM/patent

Use 60°C copper PV wires only

Reverse Grade AND C12-20

PHOTOVOLTAIC RAMP SHUTDOWN SYSTEM

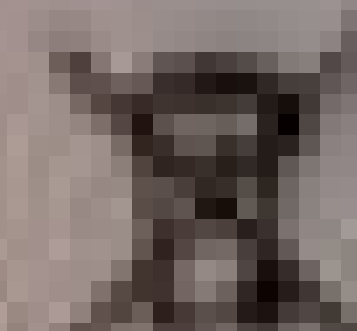
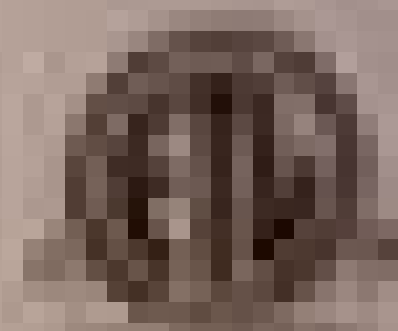
DCC-1PH-US-PH-F-1

PN: 

SV0123-191917E02-A2

SN: 

Made in Vietnam





STRUCTURAL BEAMS
INDICATED BY DOTTED LINES

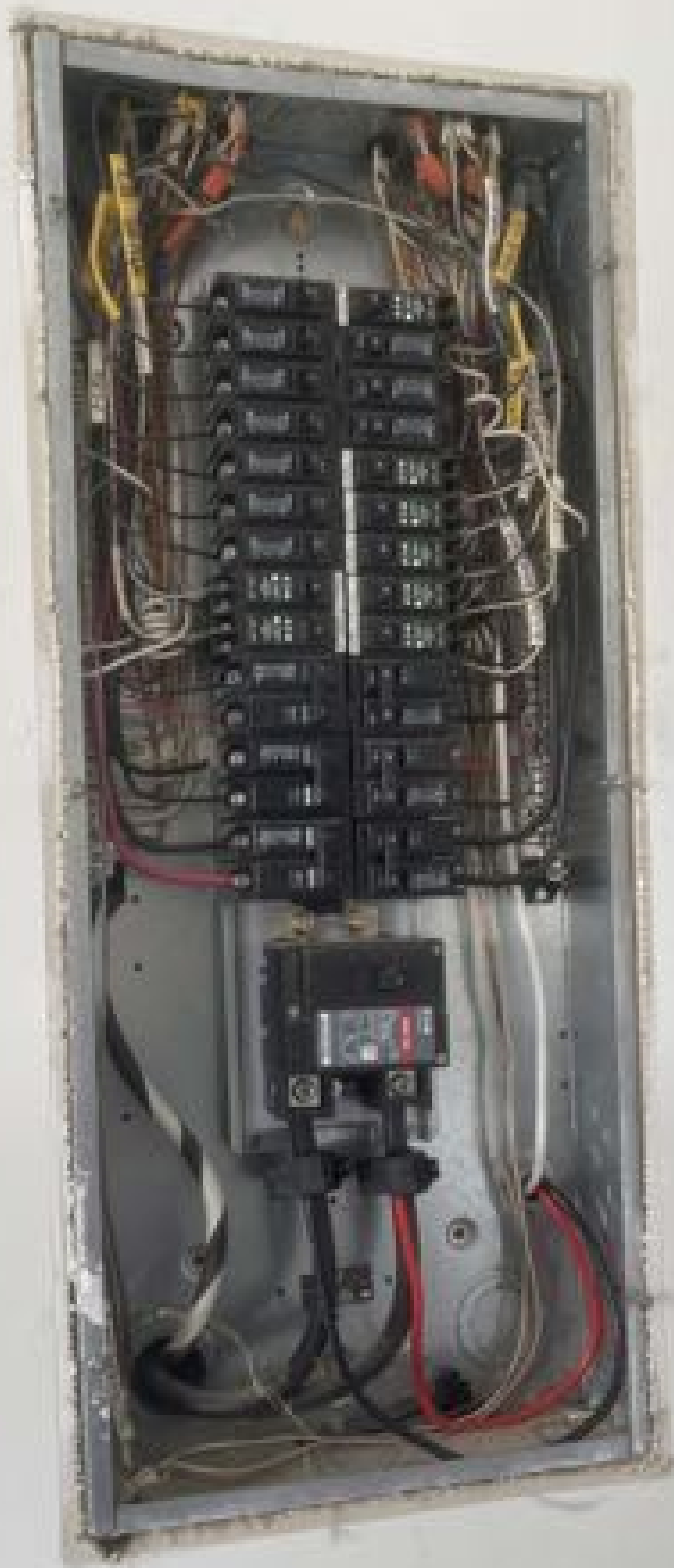
STAIRCASE INDICATED BY
DOTTED LINES AND
ARROWS

STAIRCASE

13-10
10-10

[Handwritten signature]

| ROOM NO. | AREA | TYPE | REMARKS |
|----------|------|------|---------|
| 1 | 1000 | ROOM | |
| 2 | 1000 | ROOM | |
| 3 | 1000 | ROOM | |
| 4 | 1000 | ROOM | |
| 5 | 1000 | ROOM | |
| 6 | 1000 | ROOM | |
| 7 | 1000 | ROOM | |
| 8 | 1000 | ROOM | |
| 9 | 1000 | ROOM | |
| 10 | 1000 | ROOM | |
| 11 | 1000 | ROOM | |
| 12 | 1000 | ROOM | |
| 13 | 1000 | ROOM | |
| 14 | 1000 | ROOM | |
| 15 | 1000 | ROOM | |
| 16 | 1000 | ROOM | |
| 17 | 1000 | ROOM | |
| 18 | 1000 | ROOM | |
| 19 | 1000 | ROOM | |
| 20 | 1000 | ROOM | |





344

Dico, Dick, B...

344

CAUTION SOLAR ELECTRIC
SYSTEM CONNECTED

CAUTION
ELECTRIC SHOCK
Hazardous Voltage
Warning

CAUTION



EATON

Always use safety gear.
Disconnect the circuit & verify power
absences as required in all the panels.

W.A. 2007-11-01

Complete instructions
are available in the manual & online.
For more information, visit www.eaton.com

For more information, visit

www.eaton.com

For more information, visit

www.eaton.com

⚠ DANGER
Always use safety gear.
Disconnect the circuit & verify power
absences as required in all the panels.

⚠ PELDOR
Always use safety gear.
Disconnect the circuit & verify power
absences as required in all the panels.

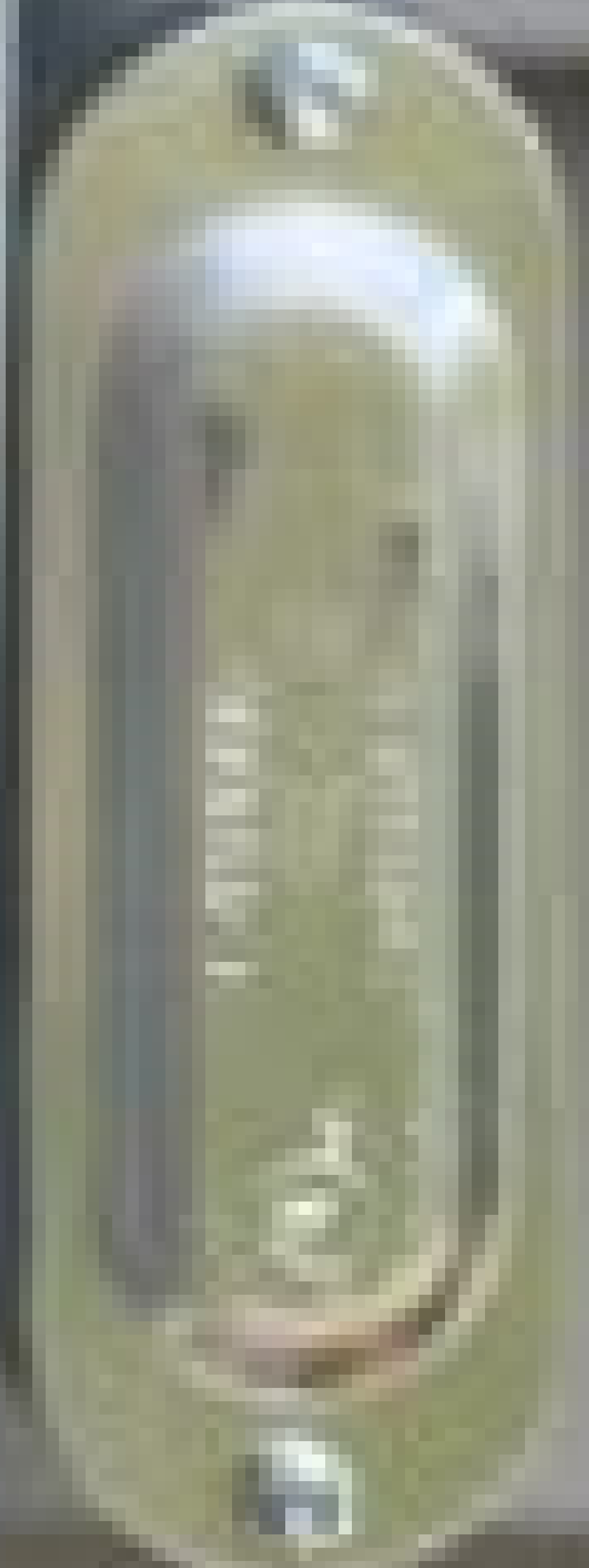


**RAPID SHUTDOWN
SWITCH FOR
SOLAR PV SYSTEM**

⚠ WARNING
ELECTRIC SHOCK HAZARD
TERMINALS ON THE LINE AND
LOAD SIDES MAY BE ENERGIZED
IN THE OPEN POSITION

AC DISCONNECT
PHOTOVOLTAIC SYSTEM
POWER SOURCE

RATED AC OUTPUT CURRENT **41.6** AMPS
NOMINAL OPERATING AC VOLTAGE **240** VOLTS







solar edge

HD wave



⚠ WARNING

THIS EQUIPMENT FED BY MULTIPLE SOURCES. TOTAL RATING OF ALL OVERCURRENT DEVICES, EXCLUDING MAIN SUPPLY OVERCURRENT DEVICE, SHALL NOT EXCEED CAPACITY OF BUSBAR.

**SOLAR PV SYSTEM
EQUIPPED WITH
RAPID SHUTDOWN**



TURN RAPID SHUTDOWN SWITCH TO THE 'OFF' POSITION TO SHUT DOWN PV SYSTEM AND REDUCE SHOCK HAZARD IN THE ARRAY

solaredge

JHD wave

ON

OFF



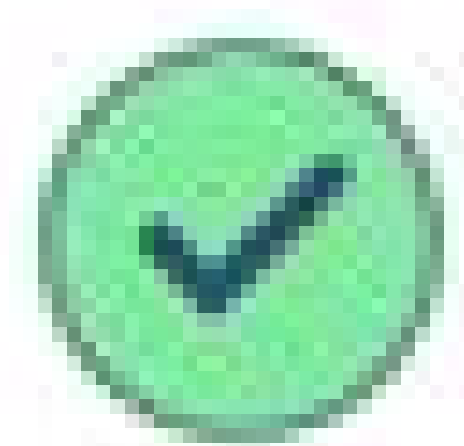
PV SYSTEM DC DISCONNECT
MAXIMUM VOLTAGE **600**
MAXIMUM CIRCUIT CURRENT **37.5**

solar**edge**





Device Activated



Controller

Firmware

Inverter

| | | |
|---|------|------------|
| ✓ | CPU | 4.17.221 |
| ✓ | DSP1 | 1.100.1423 |
| ✓ | DSP2 | 2.100.1302 |

Continue

Disconnect from device

Pairing Complete

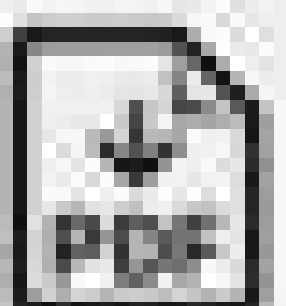
Pairing completed successfully



Done

Start another pairing

Disconnect from device



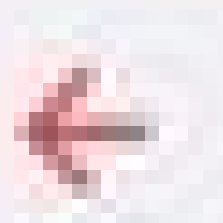




Grid Monitoring Completed.



Pairing Completed.



solar **EDGE**

SN 74068807-09



Site

Production
5.37 kW

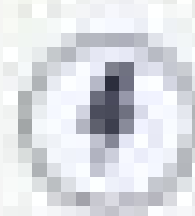
Limit
10 kW

Inverters
1 of 1

Inverter

SN 74068807-09

Summary



Power
5.37 kW



Voltage
249 Vac



Frequency
60 Hz

P_OK: 26 of 26

Optimizers Communicating

Server Comm.
Conn. internet
Cellular

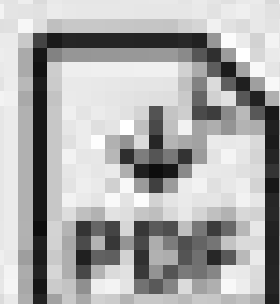


Status

Power Limit

Switch is

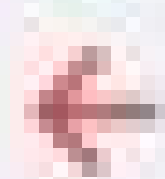
Disconnect from device



Grid Monitoring Completed.

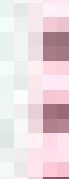


Pairing Completed.



solar **EDGE**

SN 74068807-09



Status
Production

Power Limit
10 kW

Switch is
On

Cos Phi
1

Q
196 VAR

Country
US 240V

DC Voltage
396 Vdc

Isolation
11000 kOhm

Temp.
108° F

AFCI
Manual Reconnect

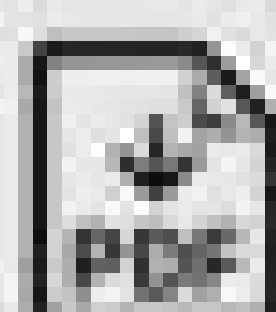
Communication

Ethernet
No Cable

RS485-1
Modbus
0 of 1

RS485-2
SE Follower

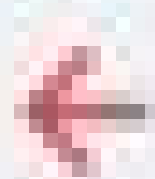
Disconnect from device



Grid Monitoring Completed.



Pairing Completed.



solar **EDGE**

SN 74068807-09



Communication

Ethernet
No Cable

RS485-1
Modbus
0 of 1

RS485-2
SE Follower

Cellular

Wi-Fi
NC

ZigBee
NA

Inverter Energy

Today
696 Wh

This Month
696 Wh

This Year
696 Wh

Total
695 Wh



Commissioning



Disconnect from device

