



HOME WIRE &

75 FT

MAX. SIZE COND.

RoHS





CAUTION













PHOTOVOLTAIC POWER SOURCE

MADE IN USA CE CENTAUR ELECTRICAL - TYPE EF SCS 3/4"











Do Not Remove 174A2B4E-DA



SolarEdge Technologies Ltd.  
SolarEdge Technologies GmbH/  
Werner-Eckert-Straße 6/81829 Munich/Germany



### CAUTION

HOT SURFACES-TO REDUCE THE RISK OF BURNS-DO NOT TOUCH.  
RISK OF ELECTRIC SHOCK-WHEN THE PHOTOVOLTAIC ARRAY IS EXPOSED TO LIGHT, IT SUPPLIES A DC VOLTAGE TO EQUIPMENT. COVER PV MODULE WITH OPAQUE MATERIAL BEFORE CONNECTING OR DISCONNECTING THIS OPTIMIZER.  
DURING FAULT, ZERO CURRENT IS SOURCED INTO DC ARRAY BY CONVERTER.

SolarEdge Technologies Ltd.  
Power Optimizer

Solaredge Technologies GmbH/  
Werner-Eckert-Straße 6/81829  
Munich/Germany

**WARNING** ELECTRIC SHOCK HAZARD. THE DC CONDUCTORS OF THIS PHOTOVOLTAIC SYSTEM ARE UNGROUNDED AND MAY BE ENERGIZED.

### AVERTISSEMENT

RISQUE DE CHOC ELECTRIQUE: QUAND LE CHAMP PHOTOVOLTAIQUE EST EXPOSE A LA LUMIERE, UNE TENSION CC EST FOURNIE A CET EQUIPEMENT.  
SURFACES CHAUDES: NE PAS TOUCHER, AFIN DE REDUIRE LES RISQUES DE BRULURES LE COURANT DE RETOUR INJECTE PAR LE CONVERTISSEUR EN CAS DE DEFAILLANCE DANS LE MODULE PV EST TOUJOURS NUL.





**CAUTION: SOLAR ELECTRIC SYSTEM CONNECTED**

**PHOTOVOLTAIC SYSTEM kWh METER**

CENTRON®

0002336435  
FCC ID: SK9AM17, IC:864G-AM17, MODEL:AM17

888.888888

CL200 240V 3W TYPE C2M 30TA 1.0Kh  
\*ZZZ B18167 H67\* CA 0.5  
DUKE ENERGY PROGRESS FM2S 60HZ  
330 758 447

F120529  
OpenWay™  
10/19

THE OF BROADWAY  
DURHAM













01749F0B3-09



Do Not Remove 1749F0B3-03

SolarEdge Technologies Ltd  
SolarEdge Technologies GmbH/  
Werner-Eckert-Straße 6/81829 Munich/Germany



SolarEdge Technologies Ltd  
Power Optimizer

Solaredge Technologies GmbH/  
Werner-Eckert-Straße 6/81829  
Munich/Germany

**CAUTION**

HOT SURFACES-TO REDUCE THE RISK OF BURNS-DO NOT TOUCH. RISK OF ELECTRIC SHOCK-WHEN THE PHOTOVOLTAIC ARRAY IS EXPOSED TO LIGHT, IT SUPPLIES A DC VOLTAGE TO EQUIPMENT. COVER PV MODULE WITH OPAQUE MATERIAL BEFORE CONNECTING OR DISCONNECTING THIS OPTIMIZER. DURING FAULT, ZERO CURRENT IS SOURCED INTO DC ARRAY BY CONVERTER.

**WARNING** ELECTRIC SHOCK HAZARD. THE DC CONDUCTORS OF THIS PHOTOVOLTAIC SYSTEM ARE UNGROUNDED AND MAY BE ENERGIZED.

**AVERTISSEMENT**

RISQUE DE CHOC ELECTRIQUE. QUAND LE CHAMP PHOTOVOLTAIQUE EST EXPOSE A LA LUMIERE, UNE TENSION CC EST FOURNIE A CET EQUIPEMENT. SURFACES CHAUDES. NE PAS TOUCHER. AFIN DE REDUIRE LES RISQUES DE BRULURES LE COURANT DE RETOUR INJECTE PAR LE CONVERTISSEUR EN CAS DE DEFAILLANCE DANS LE MODULE PV EST TOUJOURS NUL

12AWG 90°C WET OR DRY -40°C 200V SUN RES Δ 62930 IEC 131 1X1mm² HALOGEN FREE LOW SMOKE ZJRH RENHE PHOTOVOLTAIC

2000V SUN RES RENHE PHOTOVOLTAIC TECHNOLOGIES

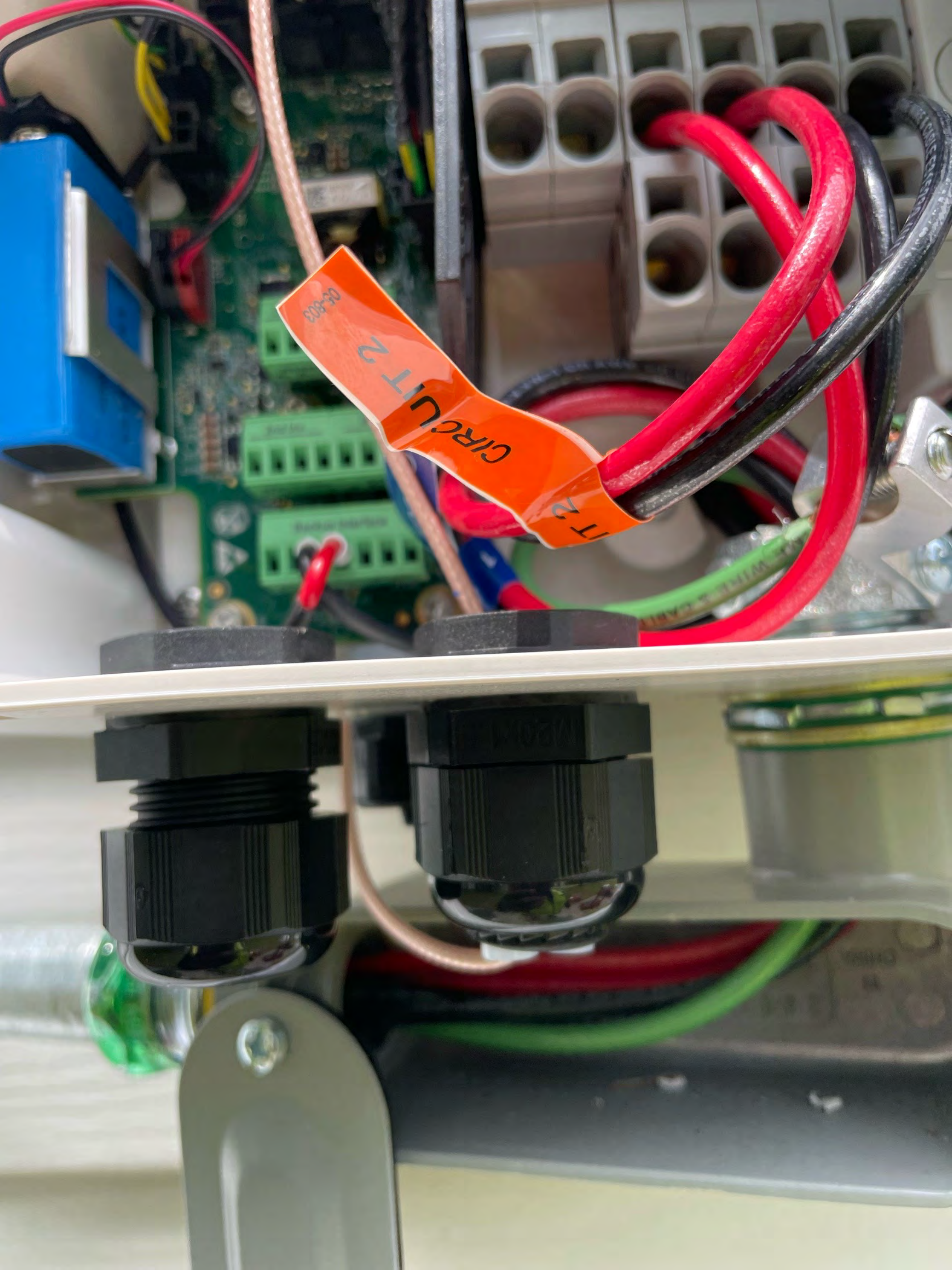
STOP!

under load












04-803

CIRCUIT 2

FT 2



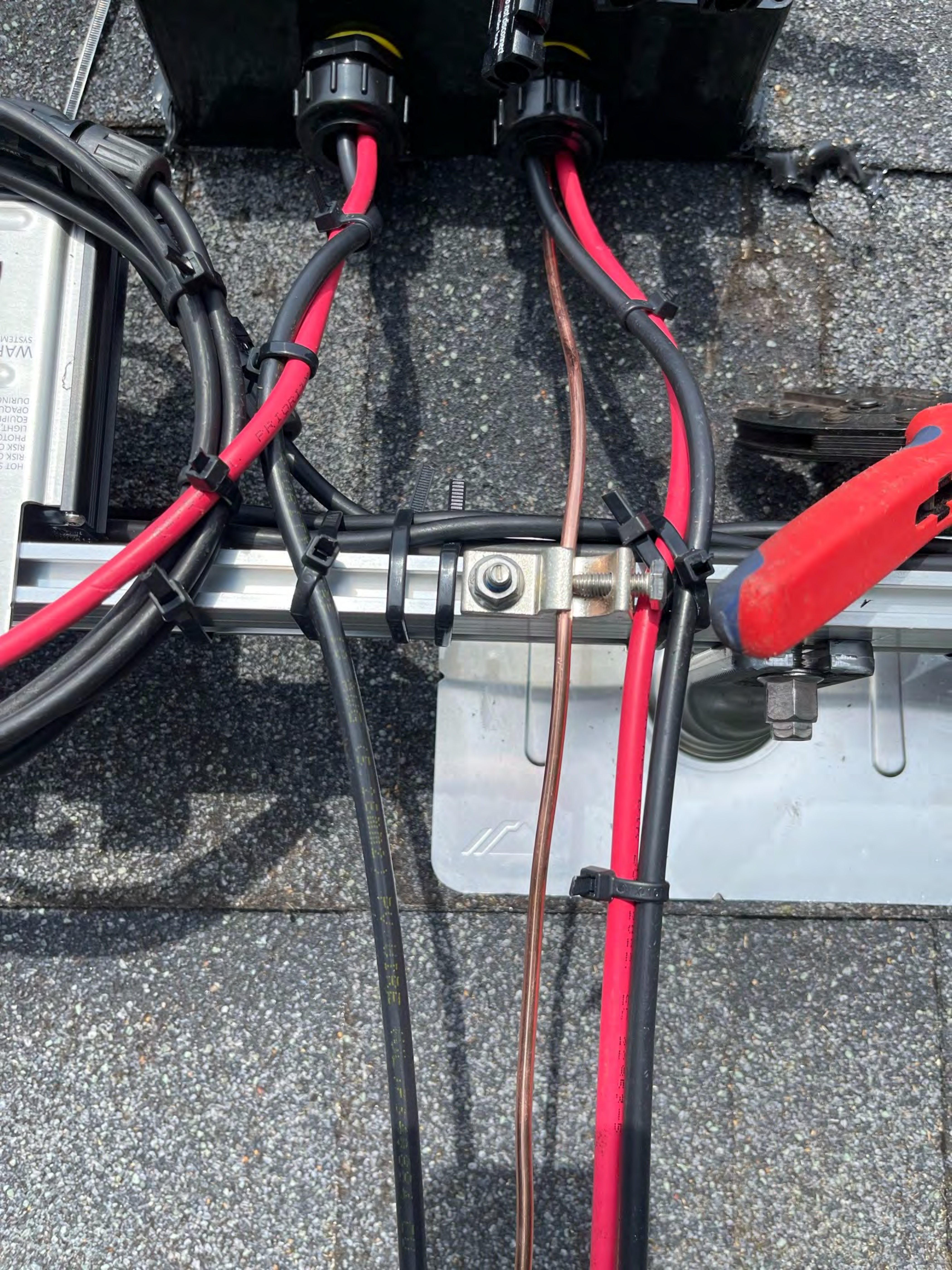
 **WARNING**  
DUAL POWER SUPPLY  
SOURCES: UTILITY GRID  
AND PV SOLAR  
ELECTRIC SYSTEM

 **CAUTION**   
SOLAR POINT OF CONNECTION

**CAUTION: SOLAR ELECTRIC  
SYSTEM CONNECTED**







HOT SURFACE  
RISK OF BURN  
DURING OPERATION

FR1000

FR1000-1















**MISSION SOLAR ENERGY**

Serial No. **M230421-B0251**

Model Number **MSE396SX9R**

|                         |                         |
|-------------------------|-------------------------|
| Rated Maximum Power     | [W] <b>396 (-0/+3%)</b> |
| Open - Circuit Voltage  | [V] <b>46.2</b>         |
| Voltage at Pmax         | [V] <b>37.0</b>         |
| Short - Circuit Current | [A] <b>11.24</b>        |
| Current at Pmax         | [A] <b>10.68</b>        |
| Max. System Voltage     | [V] <b>1000</b>         |

Max. Series overcurrent protective device (where required) fuse rating [A] **20**

Standard test condition **AM=1.5 E=1000W/m<sup>2</sup> Tc=25°C**

For field connections, use Cu only, 12AWG (US, CANADA), 4mm<sup>2</sup> (EU, Asia) wires insulated for a minimum of 90°C, rated for wet conditions and resistant to ultra violet radiation (where exposed). See installation manual for PV connector details and compatibility. Avertissement Risque de choc électrique. Ce module produit des tensions élevées dans la lumière du soleil. Risque électrique peut choquer, brûler ou de provoquer la mort. Ne pas toucher la borne.

Fire Rating: Type 1  
Class of Equipment: Class II  
Design Load: Minimum 3600 Pa front and minimum 1600 Pa back load

Warning  
PV modules generate voltage even with very weak light. Do not open the junction box. Les modules PV produisent tension même en basse lumière. Ne pas ouvrir la boîte de jonction.

Address:  
8303 S. New Braunfels Ave.  
San Antonio, TX 78235  
**ASSEMBLED IN THE USA**














SOLAR PHOTOVOLTAIC  
EQUIPPED WITH  
SAFE AUTOMATIC  
DISCONNECT  
solar 2017 JHD

E-T-N  
ALuminum  
RATED 150 AMP  
120/240V AC  
SOLAR PV SYSTEM

120/240V  
60 Hz  
3 Phase  
4 Wire  
100 AMP  
ELECTRIC METER

CONDUIT  
1/2" x 1/2"

CONDUIT  
1/2" x 1/2"



# EATON®

General Duty Safety Switch  
Interrupteur de sécurité à usage général  
Interruptor de seguridad de servicio general

60 A, 240 V~, 60 Hz

Complete ratings inside  
Valeurs nominales complètes à l'intérieur  
Información completa de capacidades en el interior

Further instructions inside  
Autres instructions à l'intérieur  
Instrucciones adicionales en el interior

Made in U.S.A. / Fabriqué aux É.-U. / Hecho en E.U.A.



## ⚠ DANGER

**HAZARDOUS VOLTAGE. WILL CAUSE SEVERE INJURY OR DEATH.**

- Never operate switch with cover open.
- Turn OFF power ahead of switch before doing any work inside. Replace all parts. Close cover before turning power ON.

**TENSION DANGEREUSE. PEUT CAUSER DES BLESSURES GRAVES OU LA MORT.**

- Ne jamais manœuvrer l'interrupteur lorsque le couvercle est ouvert.
- Couper l'alimentation en amont de l'interrupteur avant toute intervention. Remplacer les pièces. Fermer le couvercle avant de remettre sous tension.

## ⚠ PELIGRO

**VOLTAJE PELIGROSO. PUEDE CAUSAR HERIDAS SEVERAS O LA MUERTE.**

- Nunca opere el interruptor con la cubierta abierta.
- Desconectar la alimentación del interruptor antes de trabajar dentro del mismo. Reemplazar todas las partes. Cerrar la cubierta antes de energizar el interruptor.

30-43080











E491006  
3M COVER  
UL<sub>us</sub>



PHOTOVOLTAIC POWER SOURCE

EM



OPERATING TEMPERATURE -75C

ARRAY IS EXPOSED TO LIGHT, IT SURVIVES THIS EQUIPMENT.



Intertek  
5516942

NEMA 3R

REFER TO INSTALLATION MANUAL  
VOLUME 200 CU INCHES  
TORQUE FOR ALL SCREWS & BOLTS: 15-20  
CONFORMS TO UL STANDARD 1741



CIRCUIT 1













PHOTOVOLTAGE POWER SOURCE

SOLAR PV SYSTEM  
EQUIPPED WITH  
RAPID SHUTDOWN

**WARNING**  
THIS EQUIPMENT FED BY MULTIPLE  
SOURCES. TOTAL RATING OF ALL  
OVERCURRENT DEVICES, EXCLUDING  
WHEN SUPPLY OVERCURRENT  
DEVICE SHALL NOT EXCEED  
AMPERITY OF BUSBAR.

**DC DISCONNECT**

solar edge HD wave

E-T-N

**AC DISCONNECT**  
FOR THE USE OF THE SYSTEM  
WHEN MAINTENANCE IS  
REQUIRED. THIS SWITCH  
SHALL BE KEPT IN THE  
OFF POSITION AT ALL TIMES.

**WARNING**  
RATED SWITCH RATING  
TERMINALS ON THE LINE AND  
LOAD SIDE ARE TO BE MAINTAINED  
IN THE OPEN POSITION.

**RAPID SHUTDOWN  
SWITCH FOR  
SOLAR PV SYSTEM**

PHOTOVOLTAGE POWER SOURCE

**CAUTION: SOLAR ELECTRIC  
SYSTEM CONNECTED**  
PHOTOVOLTAGE  
SYSTEM AND METER

TIME WARNER  
CABLES

Small grey electrical enclosure

Bundle of electrical and data cables connected to a terminal block on a brick wall.



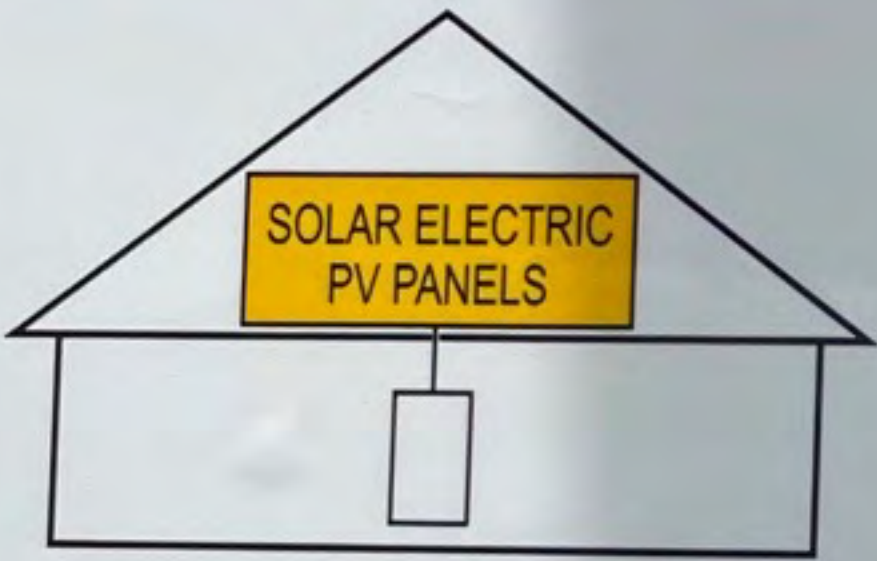








# SOLAR PV SYSTEM EQUIPPED WITH RAPID SHUTDOWN



TURN RAPID SHUTDOWN SWITCH TO  
THE "OFF" POSITION TO SHUT DOWN  
PV SYSTEM AND REDUCE  
SHOCK HAZARD IN THE ARRAY

05-112

## ⚠ WARNING

THIS EQUIPMENT FED BY MULTIPLE  
SOURCES. TOTAL RATING OF ALL  
OVERCURRENT DEVICES, EXCLUDING  
MAIN SUPPLY OVERCURRENT  
DEVICE, SHALL NOT EXCEED  
AMPACITY OF BUSBAR.

pvlabs.com

05-108

## PV SYSTEM DC DISCONNECT

MAXIMUM VOLTAGE

240

MAXIMUM CIRCUIT CURRENT

32

MAXIMUM RATED OUTPUT  
CURRENT OF THE CHARGE  
CONTROLLER OR DC TO DC  
CONVERTER (IF INSTALLED)

pvlabs.com 03-307

**solar**edge

**HD** wave





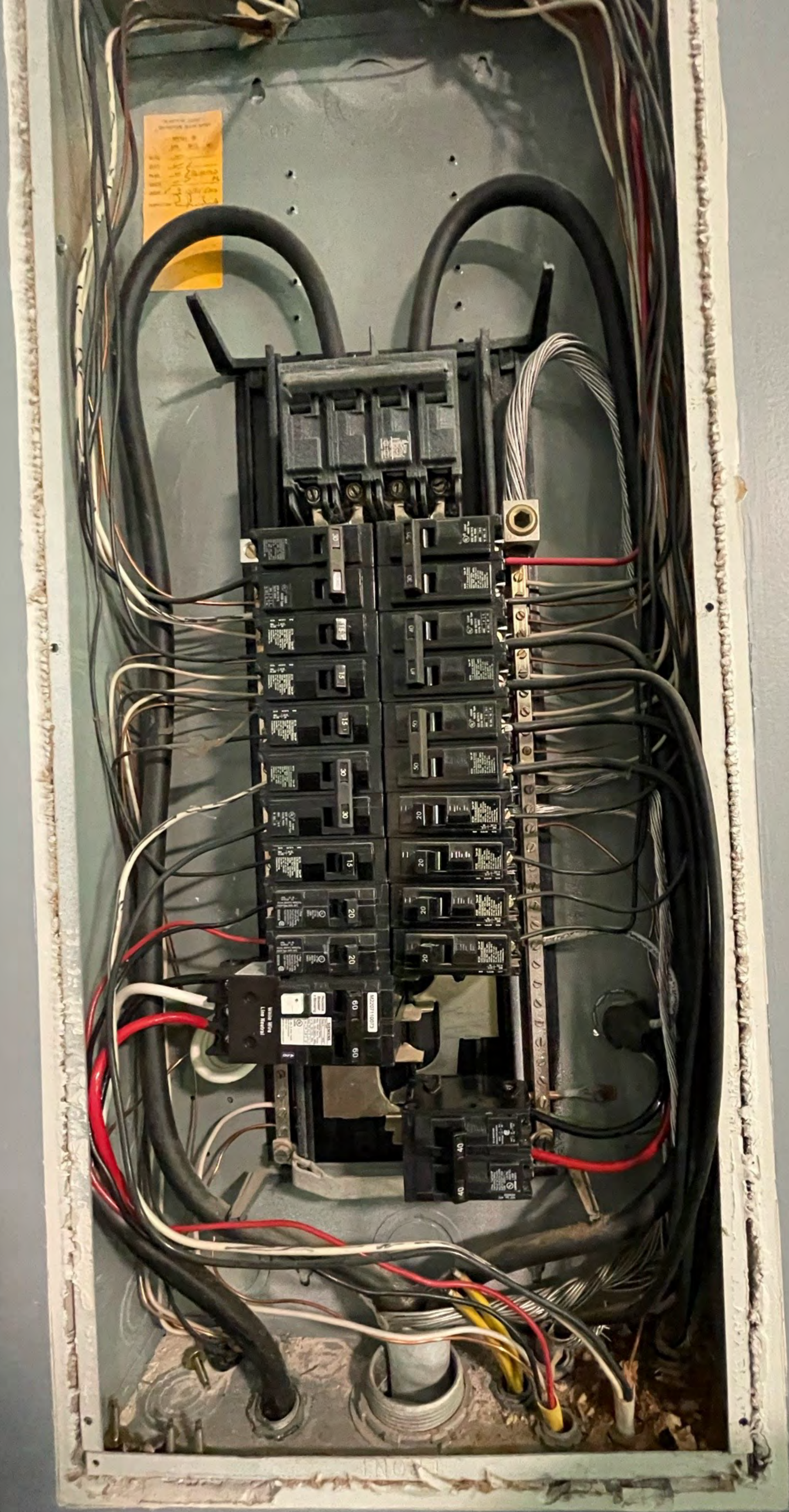




3  
4  
9  
5











**CAUTION**

**F4P**  
FIRST FOR PERFORMANCE

**CAUTION**

**F4P**  
FIRST FOR PERFORMANCE

**CAUTION**



PN: SE7600H-USMNB8L14  
 SN: SV1S22-0740B7854-4B




2:98e MAC  
 84 06 c5 22 e2 38  
 WiFi MAC  
 70B: 05:69: m4z: ad1: x41: S48=  
 Activation  
 a: C9807  
 WiFi Password  
 Intertek  
 ETL US

Grid Support Utility Inverter With Stand Alone Mode - Isolated  
 Photovoltaic Inverter With Stand Alone Mode

SE7600H-US solar edge

Operating Voltage Range  
 Max Input Current  
 Max Continuous Output Power Grid connected  
 270-480 Vdc  
 30.5 Adc  
 7600Wac  
 11400Wac  
 211-240-264 Vac  
 Max Continuous Output Current Stand Alone  
 Voltage Min-Nom-Max  
 Max Continuous Output Power Stand Alone  
 Max Continuous Output Current Stand Alone  
 Max Continuous Output Current Grid connected  
 Max Utility Backfeed Current  
 Max Output Fault Current  
 Max Utility Backfeed Current  
 Frequency Min-Nom-Max  
 Output Power Factor  
 Max Ambient Temperature  
 Enclosure  
 Type 1 Photovoltaic Arc - Fault Circuit-Protection  
 with integrated ground fault protection per NEC 690.35 (c)  
 1P65/Type 4  
 60 C  
 +/- 0.85 - 1  
 59.3-60.0-60.5 Hz  
 0 Aac  
 74 Aac  
 47.5Aac  
 32Aac  
 211-240-264 Vac

solar edge



PHOTOVOLTAIC RAPID  
 SHUTDOWN SYSTEM

solar edge

740B7854-4B



ETL LISTED  
 CONFORMS TO  
 ANSI/UL 1741  
 CERTIFIED TO  
 CAN/CSA  
 C22.2 NO 107

ETL US  
 Intertek  
 4004590

Contains FCC ID: 2AGPT-PLNX, IC: 20916-PNLX. The enclosed device complies with part 15 of the FCC Rules. Operation is subject to the following two conditions:  
 (i.) this device may not cause harmful interference and  
 (ii.) this device must accept any interference received, including interference that may cause undesired operation.

PATENT MARKING NOTICE-SEE [www.solaredge.com/groups/patent](http://www.solaredge.com/groups/patent) Made In Vietnam



Grid Monitoring Completed.



Pairing Completed.



**solar**edge

SN 740B7854-4B



Optimizers  
Communicating

S\_OK  
Cellular

Status  
**Production**

Power Limit  
**7.6 kW**

Switch is  
**On**

Cos Phi  
**1**

Q  
**162 VAR**

Country  
**US 240V**

DC Voltage  
**393 Vdc**

Isolation  
**11000 kOhm**

Temp.  
**91° F**

Disconnect from device







WELCOME

3495





BAT+

BAT-

PV+

PV-

13

IEC60947-3 VDEU660

AC21 10A

U<sub>e</sub> 690V  
50-60Hz

0  
OFF

|      |     |     |
|------|-----|-----|
| AC15 | 230 | 400 |
| V~   | 3   | 2   |
| A    |     |     |

IP20

LOCK

14

Made in Austria

REMOVE





**WARNING**

DUAL POWER SUPPLY

SOURCES: UTILITY GRID  
AND PV SOLAR  
ELECTRIC SYSTEM

**CAUTION**

SOLAR POINT OF CONNECTION

**CAUTION: SOLAR ELECTRIC  
SYSTEM CONNECTED**





solar**edge**



SE7600H - US



Grid Support Utility Interactive Non-Isolated  
Photovoltaic Inverter with Stand Alone Mode

270 - 480 Vdc  
30.5 Adc

7600Wac

11400Wac

211 - 240 - 264 Vac

32Aac

47.5Aac

74 Aac

0 Aac

59.3 - 60.0 - 60.5 Hz

+/- 0.85 - - 1

60 C

IP65/Type 4

With integrated ground fault protection per NEC 690.35 (C)  
Type 1 Photovoltaic Arc - Fault Circuit - Protection

Enclosure

Max Ambient Temperature

Output Power Factor

Frequency Min - Nom - Max

Max Utility Backfeed Current

Max Output Fault Current

Max Continuous Output Current Stand Alone

Max Continuous Output Current Grid connected

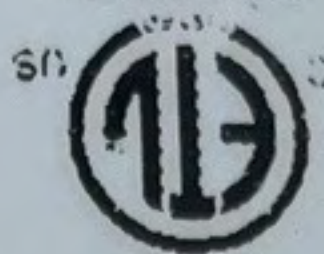
Voltage Min - Nom - Max

Max Continuous Output Power Stand Alone

Max Continuous Output Power Grid connected

Max Input Current

Operating Voltage Range



Intertek

WiFi Password:

g1CP8p7

Activation:

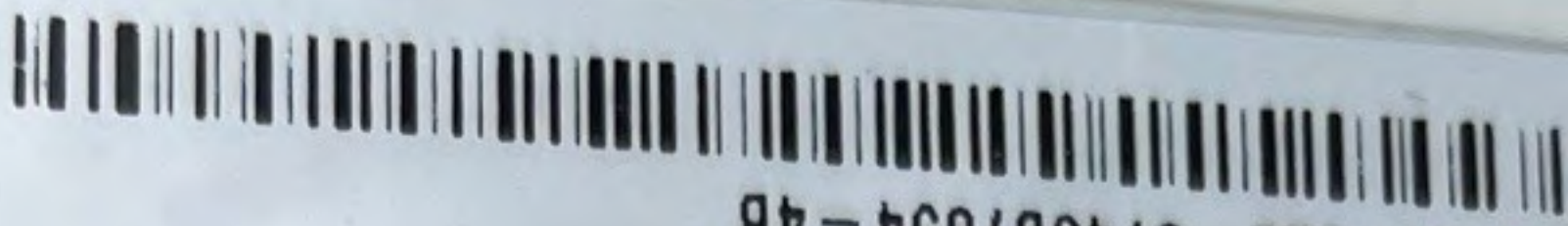
70By BhEg EXUG midz adly xtal S48 =

WiFi MAC:

84:D6:C5:23:E2:38

ZigBee MAC:

PN: SE7600H - USMNBLL14  
SN: SV1522 - 074087854 - 4B















WELCOME

3495



40 40

SIEMENS  
HACR Type  
40°C

2 Poles Type/Type Op  
Interrupting Rating  
Pouvoir de Coupure  
MAX. RMS. SYM. AMPS.  
AMP. SYM. EFF. MAX.  
10,000 120/240 V ~

UL LISTED  
L-5538  
ISSUE NO.  
C.B./Disj.

CJ-AL 60/75°C WIRE  
CONDUCTOR/FIL 60/75°C

|             |    |     |
|-------------|----|-----|
| AWG         | 6  | 6-4 |
| lb-in/lb-po | 40 | 45  |

mm<sup>2</sup> 6.4 13.3-21.2  
Nm 4.5 5.1

26 28 30

**SOLAR PV BREAKER**  
**BREAKER IS BACKFED**  
**DO NOT RELOCATE**  
 pvlabels.com 03-225





BATH  
BATT  
PV+  
PV-

13  
IEC60947-3 VDE0660  
AC21 10A  
U<sub>c</sub> 690V  
50-60Hz  
AC19  
I<sub>n</sub> 120/140  
A 3/2  
IP20  
LOCK  
14  
Made in Austria

100V ac B600  
0-12 AWG 1.7Nm  
20 amp RKS  
suitable for use on  
circuits capable of  
del. not more than  
5kA sym. rms  
600V ac max  
Wire Cu 60/75 C

MOD 2  
TER 1  
UP

3  
2  
1

L1 L2 N

L2 L1

SMRT EV  
2nd Inv. Battery  
Inter.

WIRE 2 OR GR  
30 M

E491016  
34301ER





PHOTOVOLTAIC POWER



Do Not Remove 176A2B4E-DA  
SolarEdge Technologies Ltd.  
SolarEdge Technologies GmbH  
Werner-Eckert-Straße 6/81829 Munich, Germany

FC

**CAUTION**  
HOT SURFACES TO REDUCE THE RISK OF BURNS DO NOT TOUCH. RISK OF ELECTRIC SHOCK WHEN THE PHOTOVOLTAIC ARRAY IS EXPOSED TO LIGHT. IT SUPPLIES A DC VOLTAGE TO EQUIPMENT. COVER PV MODULE WITH OPAQUE MATERIAL BEFORE CONNECTING OR DISCONNECTING THIS OPTIMIZER. DURING FAULT, ZERO CURRENT IS SOURCED INTO DC ARRAY BY CONVERTER.

SolarEdge Technologies Ltd.  
Power Optimizer

Solaredge Technologies GmbH/  
Werner-Eckert-Straße 6/81829 Munich/Germany

**WARNING** ELECTRIC SHOCK HAZARD. THE DC CONDUCTORS OF THIS PHOTOVOLTAIC SYSTEM ARE UNGROUNDED AND MAY BE ENERGIZED.

**AVERTISSEMENT**

RISQUE DE CHOC ELECTRIQUE: QUAND LE CHAMP PHOTOVOLTAIQUE EST EXPOSE A LA LUMIERE, UNE TENSION CC EST FOURNIE A CET EQUIPEMENT. SURFACES CHAUDES: NE PAS TOUCHER, AFIN DE REDUIRE LES RISQUES DE BRULURES LE COURANT DE RETOUR INJECTE PAR LE CONVERTISSEUR EN CAS DE DEFAILLANCE DANS LE MODULE PV EST TOUJOURS NUL.

Do not dis  
under



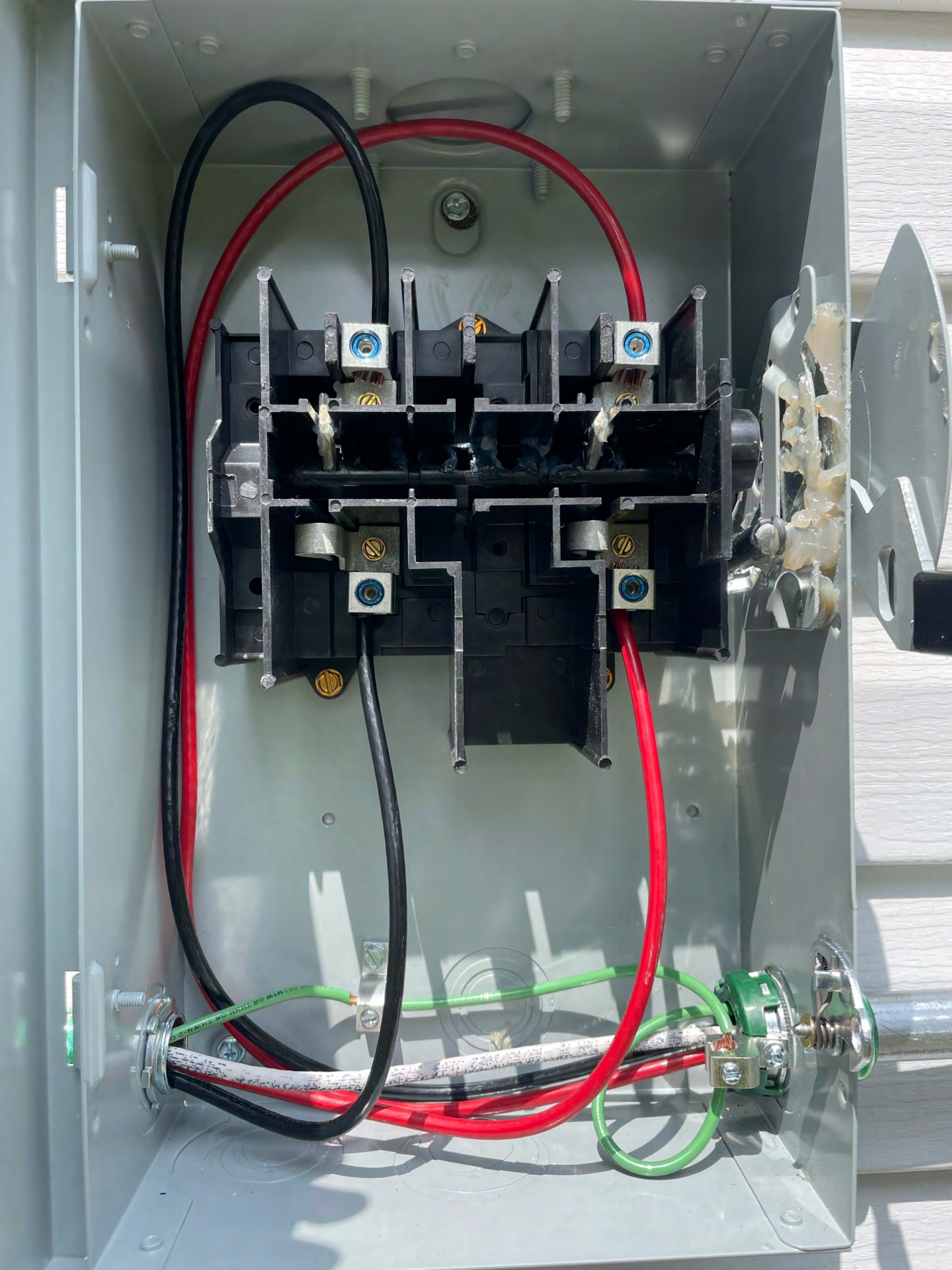
Stephan Register  
3045 Rains Church Rd, Farmville, NC 27826

WARNING

NEVER TOUCH ANY PART OF THE  
EQUIPMENT WHEN IT IS ENERGIZED  
OR WHEN THE COVER IS OPEN. ALWAYS  
USE THE PROPER SAFETY PROCEDURES  
WHEN WORKING WITH ELECTRICAL  
EQUIPMENT.





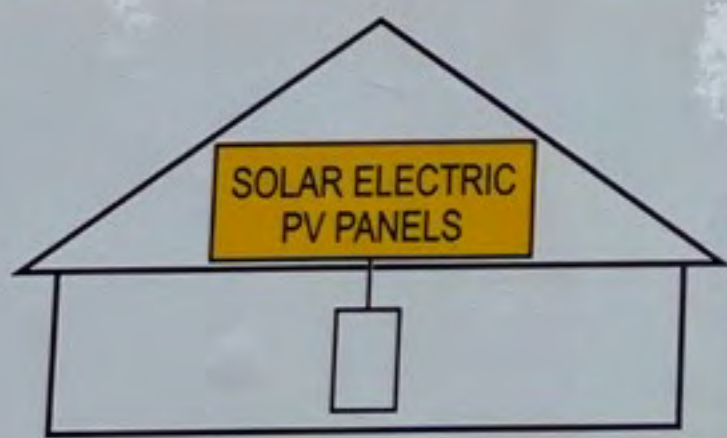








**SOLAR PV SYSTEM  
EQUIPPED WITH  
RAPID SHUTDOWN**



TURN RAPID SHUTDOWN SWITCH TO THE "OFF" POSITION TO SHUT DOWN PV SYSTEM AND REDUCE SHOCK HAZARD IN THE ARRAY

**⚠ WARNING**

THIS EQUIPMENT FED BY MULTIPLE SOURCES. TOTAL RATING OF ALL OVERCURRENT DEVICES, EXCLUDING MAIN SUPPLY OVERCURRENT DEVICE, SHALL NOT EXCEED AMPACITY OF BUSBAR.

**PV SYSTEM DC DISCONNECT**

MAXIMUM VOLTAGE

MAXIMUM CIRCUIT CURRENT

MAXIMUM RATED OUTPUT CURRENT OF THE CHARGE CONTROLLER OR DC TO DC CONVERTER (IF INSTALLED)

**solar**edge

**HD** wave

OFF

ON



**DC DISCONNECT**

solar**edge**







# EATON®

General Duty Safety Switch  
Interrupteur de sécurité à usage général  
Interruptor de seguridad de servicio general

60 A, 240 V~, 60 Hz

Complete ratings inside  
Valeurs nominales complètes à l'intérieur  
Información completa de capacidades en el interior

Further instructions inside  
Autres instructions à l'intérieur  
Instrucciones adicionales en el interior

Made in U.S.A. / Fabriqué aux É.-U. / Hecho en E.U.A.

|  |  |
|--|--|
|  | <b>⚠ DANGER</b>  |
|  | <b>HAZARDOUS VOLTAGE. WILL CAUSE SEVERE INJURY OR DEATH.</b><br>● Never operate switch with cover open.<br>● Turn OFF power ahead of switch before doing any work inside. Replace all parts. Close cover before turning power ON.  |
|  | <b>TENSION DANGEREUSE. PEUT CAUSER DES BLESSURES GRAVES OU LA MORT.</b><br>● Ne jamais manœuvrer l'interrupteur lorsque le couvercle est ouvert.<br>● Couper l'alimentation en amont de l'interrupteur avant toute intervention. Remplacer les pièces. Fermer le couvercle avant de remettre sous tension. |
|  | <b>⚠ PELIGRO</b>   |
|  | <b>VOLTAGE PELIGROSO. PUEDE CAUSAR HERIDAS SEVERAS O LA MUERTE.</b><br>● Nunca opere el interruptor con la cubierta abierta.<br>● Desconectar la alimentación del interruptor antes de trabajar dentro del mismo. Reemplazar todas las partes. Cerrar la cubierta antes de energizar el interruptor.       |

30-43080



**AC DISCONNECT**  
**PHOTOVOLTAIC SYSTEM**  
**POWER SOURCE**

RATED AC OUTPUT CURRENT **32** AMPS

NOMINAL OPERATING AC VOLTAGE **240** VOLTS

pvlabe's.com 03-306

**⚠ WARNING**  
**ELECTRIC SHOCK HAZARD**  
**TERMINALS ON THE LINE AND**  
**LOAD SIDES MAY BE ENERGIZED**  
**IN THE OPEN POSITION**

pvlabe's.com 05-215

**RAPID SHUTDOWN**  
**SWITCH FOR**  
**SOLAR PV SYSTEM**

pvlabe's.com 02-316

ON

OFF







MAX. SIZE COND. #6 AWG



2B

1000-0-8-10

1000-0-8-10







Do Not Remove 174A24C6-4B  
ETL  
Intertek  
4004590  
SolarEdge Technologies Ltd.  
SolarEdge Technologies GmbH/  
Werner-Eckert-Straße 6/81829 Munich/Germany



SolarEdge Technologies Ltd.  
Power Optimizer

Solaredge Technologies GmbH/  
Werner-Eckert-Straße 6/81829  
Munich/Germany

**CAUTION**

HOT SURFACES-TO REDUCE THE RISK OF BURNS-DO NOT TOUCH. PHOTOVOLTAIC ARRAY IS EXPOSED TO LIGHT, IT SUPPLIES A DC VOLTAGE TO EQUIPMENT. COVER PV MODULE WITH OPAQUE MATERIAL BEFORE CONNECTING OR DISCONNECTING THIS OPTIMIZER. DURING FAULT, ZERO CURRENT IS SOURCED INTO DC ARRAY BY CONVERTER.

**WARNING**

ELECTRIC SHOCK HAZARD. THE DC CONDUCTORS OF THIS PHOTOVOLTAIC SYSTEM ARE UNGROUNDED AND MAY BE ENERGIZED.

**AVERTISSEMENT**

RISQUE DE CHOC ELECTRIQUE: QUAND LE CHAMP PHOTOVOLTAIQUE EST EXPOSE A LA LUMIERE, UNE TENSION CC EST FOURNIE A CET EQUIPEMENT. SURFACES CHAUDES: NE PAS TOUCHER, AFIN DE REDUIRE LES RISQUES DE BRULURES LE COURANT DE RETOUR INJECTE PAR LE CONVERTISSEUR EN CAS DE DEFAILLANCE DANS LE MODULE PV EST TOUJOURS NUL.

















|    |    |    |    |    |    |    |   |   |   |   |   |   |   |   |   |   |   |   |   |   |   |    |    |    |    |    |    |    |    |    |    |    |    |    |    |    |    |    |    |    |    |    |    |    |    |    |    |    |    |    |    |    |    |    |    |    |    |    |    |    |    |    |    |    |    |    |    |    |    |    |    |    |    |    |    |    |    |    |    |    |    |    |    |    |    |    |    |    |    |    |    |    |    |    |    |    |    |    |    |    |    |    |    |    |    |    |    |    |    |    |    |     |
|----|----|----|----|----|----|----|---|---|---|---|---|---|---|---|---|---|---|---|---|---|---|----|----|----|----|----|----|----|----|----|----|----|----|----|----|----|----|----|----|----|----|----|----|----|----|----|----|----|----|----|----|----|----|----|----|----|----|----|----|----|----|----|----|----|----|----|----|----|----|----|----|----|----|----|----|----|----|----|----|----|----|----|----|----|----|----|----|----|----|----|----|----|----|----|----|----|----|----|----|----|----|----|----|----|----|----|----|----|----|----|----|-----|
| 23 | 21 | 19 | 17 | 15 | 13 | 11 | 9 | 7 | 5 | 3 | 1 | 0 | 1 | 2 | 3 | 4 | 5 | 6 | 7 | 8 | 9 | 10 | 11 | 12 | 13 | 14 | 15 | 16 | 17 | 18 | 19 | 20 | 21 | 22 | 23 | 24 | 25 | 26 | 27 | 28 | 29 | 30 | 31 | 32 | 33 | 34 | 35 | 36 | 37 | 38 | 39 | 40 | 41 | 42 | 43 | 44 | 45 | 46 | 47 | 48 | 49 | 50 | 51 | 52 | 53 | 54 | 55 | 56 | 57 | 58 | 59 | 60 | 61 | 62 | 63 | 64 | 65 | 66 | 67 | 68 | 69 | 70 | 71 | 72 | 73 | 74 | 75 | 76 | 77 | 78 | 79 | 80 | 81 | 82 | 83 | 84 | 85 | 86 | 87 | 88 | 89 | 90 | 91 | 92 | 93 | 94 | 95 | 96 | 97 | 98 | 99 | 100 |
| 23 | 21 | 19 | 17 | 15 | 13 | 11 | 9 | 7 | 5 | 3 | 1 | 0 | 1 | 2 | 3 | 4 | 5 | 6 | 7 | 8 | 9 | 10 | 11 | 12 | 13 | 14 | 15 | 16 | 17 | 18 | 19 | 20 | 21 | 22 | 23 | 24 | 25 | 26 | 27 | 28 | 29 | 30 | 31 | 32 | 33 | 34 | 35 | 36 | 37 | 38 | 39 | 40 | 41 | 42 | 43 | 44 | 45 | 46 | 47 | 48 | 49 | 50 | 51 | 52 | 53 | 54 | 55 | 56 | 57 | 58 | 59 | 60 | 61 | 62 | 63 | 64 | 65 | 66 | 67 | 68 | 69 | 70 | 71 | 72 | 73 | 74 | 75 | 76 | 77 | 78 | 79 | 80 | 81 | 82 | 83 | 84 | 85 | 86 | 87 | 88 | 89 | 90 | 91 | 92 | 93 | 94 | 95 | 96 | 97 | 98 | 99 | 100 |
| 23 | 21 | 19 | 17 | 15 | 13 | 11 | 9 | 7 | 5 | 3 | 1 | 0 | 1 | 2 | 3 | 4 | 5 | 6 | 7 | 8 | 9 | 10 | 11 | 12 | 13 | 14 | 15 | 16 | 17 | 18 | 19 | 20 | 21 | 22 | 23 | 24 | 25 | 26 | 27 | 28 | 29 | 30 | 31 | 32 | 33 | 34 | 35 | 36 | 37 | 38 | 39 | 40 | 41 | 42 | 43 | 44 | 45 | 46 | 47 | 48 | 49 | 50 | 51 | 52 | 53 | 54 | 55 | 56 | 57 | 58 | 59 | 60 | 61 | 62 | 63 | 64 | 65 | 66 | 67 | 68 | 69 | 70 | 71 | 72 | 73 | 74 | 75 | 76 | 77 | 78 | 79 | 80 | 81 | 82 | 83 | 84 | 85 | 86 | 87 | 88 | 89 | 90 | 91 | 92 | 93 | 94 | 95 | 96 | 97 | 98 | 99 | 100 |
| 23 | 21 | 19 | 17 | 15 | 13 | 11 | 9 | 7 | 5 | 3 | 1 | 0 | 1 | 2 | 3 | 4 | 5 | 6 | 7 | 8 | 9 | 10 | 11 | 12 | 13 | 14 | 15 | 16 | 17 | 18 | 19 | 20 | 21 | 22 | 23 | 24 | 25 | 26 | 27 | 28 | 29 | 30 | 31 | 32 | 33 | 34 | 35 | 36 | 37 | 38 | 39 | 40 | 41 | 42 | 43 | 44 | 45 | 46 | 47 | 48 | 49 | 50 | 51 | 52 | 53 | 54 | 55 | 56 | 57 | 58 | 59 | 60 | 61 | 62 | 63 | 64 | 65 | 66 | 67 | 68 | 69 | 70 | 71 | 72 | 73 | 74 | 75 | 76 | 77 | 78 | 79 | 80 | 81 | 82 | 83 | 84 | 85 | 86 | 87 | 88 | 89 | 90 | 91 | 92 | 93 | 94 | 95 | 96 | 97 | 98 | 99 | 100 |

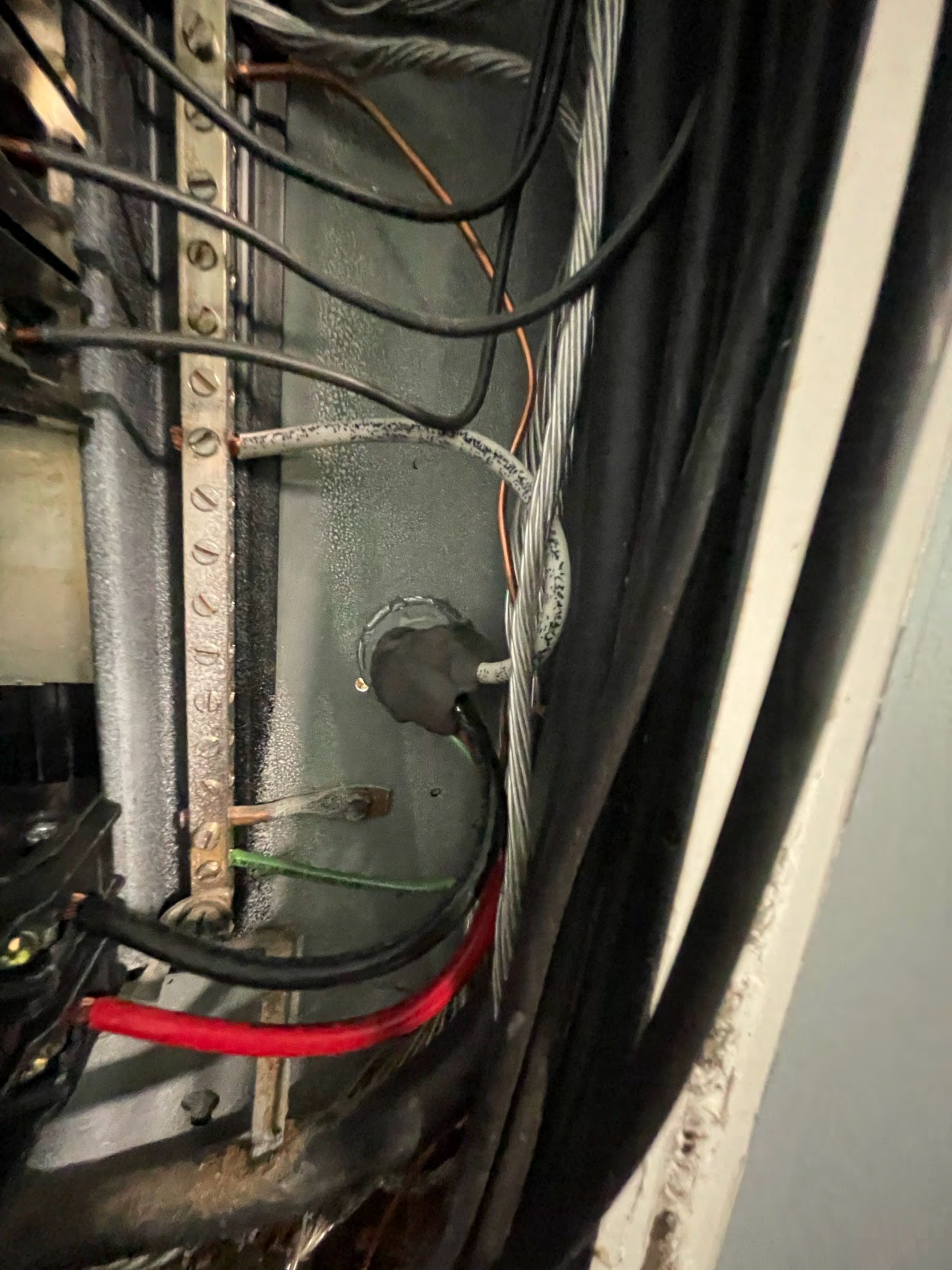


Do not disconnect under load

Do not disconnect under load

CIRCUIT 1 CIR









PHOTOVOLTAIC POWER SOURCE

UL

E491006

3/16" COVER







**solar**edge

## StorEdge Connection Unit



|                                     |           |
|-------------------------------------|-----------|
| Max DC Voltage (PV/Battery)         | 480 Vdc   |
| Max DC Current (PV)                 | 62 Adc    |
| Max DC Power (PV)                   | 23.2 kWdc |
| Max Continuous DC Current (Battery) | 31 Adc    |
| Max Continuous DC Power (Battery)   | 11.6 kWdc |
| Max AC Voltage                      | 264 Vac   |
| AC-Single Phase Frequency           | 50/60 Hz  |
| Max AC Current (Grid)               | 48 Aac    |

For more details refer to the installation guide

Patent marketing notice: see [WWW.SOLAREEDGE.COM/patent](http://WWW.SOLAREEDGE.COM/patent)

DCD-1PH-US-P2H-F-I

PN:

SV1622-19190A1CA-8C

SN:

Made in Vietnam



Intertek  
4004590



**solar**edge

## StorEdge Connection Unit



|  |                    |
|--|--------------------|
| Max AC Current (Smart EV Charger)              | 40Aac              |
| Max Continuous Output Power (Smart EV Charger) | 9600W              |
| Max Battery Energy Storage                     | 32kWh              |
| Number of AC phases                            | L1, L2, N          |
| Maximum AC short circuit current               | 74 Aac             |
| Weight   | 30.2 / 13.7 lbs/kg |
| Ambient Temperature:                           | -40°C ..60°C       |
| Enclosure Rating:                              | IP65/ Type 4X      |

For more details refer to the installation guide  
Patent marketing notice: see [WWW.SOLAREEDGE.COM/patent](http://WWW.SOLAREEDGE.COM/patent)  
Use 90°C copper PV wires only.  
Revenue Grade ANSI C12.20  
PHOTOVOLTAIC RAPID SHUTDOWN SYSTEM

DCD-1PH-US-P2H-F-I

PN:

SV1622-19190A1CA-8C

SN:

Made in Vietnam



Intertek  
4004590







Cyl-Dus

E-491006

3/4" COVER











**IMPORTANT**  
This panel is to be used only for the installation of Class A GFCI devices. Do not install any other devices in this panel. Do not install any other devices in this panel. Do not install any other devices in this panel.

|   |   |   |   |   |   |   |   |   |    |    |    |
|---|---|---|---|---|---|---|---|---|----|----|----|
| 1 | 2 | 3 | 4 | 5 | 6 | 7 | 8 | 9 | 10 | 11 | 12 |
|   |   |   |   |   |   |   |   |   |    |    |    |

**DANGER**  
Electrical Shock Hazard  
Do not touch any exposed conductive parts.  
Do not touch any exposed conductive parts.  
Do not touch any exposed conductive parts.



**SOLAR PV BREAKER**  
BREAKER IS BACKFED  
DO NOT RELOCATE

CLASS A GFCI  
GROUND FAULT CIRCUIT INTERRUPTER  
TYPE A  
15 AMPERE  
120 VOLT  
SIEMENS

**Ground Fault**  
SIEMENS  
If the breaker has tripped, check the breaker and reset the handle. If the breaker is "ON" and the GFI is not working, the breaker should be replaced.





1

**IGLOO**  
4900872







A vertical metal conduit runs down the wall from the top left. It connects to a white solar PV system disconnect box. This box has a yellow label that reads "SOLAR PV SYSTEM EQUIPPED WITH RAPID SHUTDOWN" and a red "WARNING" label. Below it is a white "DC DISCONNECT" switch with a black handle. To the right of these is a grey E-T-N AC disconnect box with a black handle and a red "WARNING" label that says "RAPID SHUTDOWN SWITCH FOR SOLAR PV SYSTEM". A second vertical metal conduit runs down the wall from the top right, connecting to the E-T-N box.

Two boxes are mounted on the wall. On the left is a grey "TIME WARNER CABLE" box with a stylized leaf logo. To its right is a smaller grey utility box. Wires are visible at the bottom of both boxes.







©DLus

E491006

3/4" COVER



MISSION SOLAR ENERGY



Serial No. **M230421-B0251**



|  |                                       |                     |  |
|--|---------------------------------------|---------------------|--|
| Model Number   | <b>MSE395SX9R</b>                     |                     |  |
| Rated Maximum Power  | [W]                                   | <b>395 (-0/+3%)</b> |  |
| Open – Circuit Voltage   | [V]                                   | <b>45.2</b>         |  |
| Voltage at Pmax  | [V]                                   | <b>37.0</b>         |  |
| Short – Circuit Current  | [A]                                   | <b>11.24</b>        |  |
| Current at Pmax  | [A]                                   | <b>10.68</b>        |  |
| Max. System Voltage  | [V]                                   | <b>1000</b>         |  |
| Max. Series overcurrent protective device (where required) fuse rating | [A]                                   | <b>20</b>           |  |
| Standard test condition  | AM=1.5 E=1000W/m <sup>2</sup> Tc=25°C |                     |  |

For field connections, use Cu only, 12AWF (US, CANADA), 4mm<sup>2</sup> (EU, Asia) wires insulated for a minimum of 90°C, rated for wet conditions and resistant to ultra violet radiation (where exposed). See installation manual for PV connector details and compatibility. Avertissement Risque de choc électrique. Ce module produit des tensions élevées dans la lumière du soleil. Risque électrique peut choquer, brûler ou de provoquer la mort. Ne pas toucher la borne.

Fire Rating : Type 1  
 Class of Equipment: Class II  
 Design Load: Minimum 3600 Pa front and minimum 1600 Pa back load



**Warning**  
 PV modules generate voltage even with very weak light. Do not open the junction box. Les modules PV produisent tension même en basse lumière. Ne pas ouvrir la boîte de jonction.



Buy American Act & the American Recovery and Reinvestment Act



Address:  
8303 S. New Braunfels Ave.  
San Antonio, TX 78235

**ASSEMBLED IN THE USA**





CENTAUR LIQUID TIGHT CONDUIT - SUN RES - MADE IN USA

3/4"

CENTAUR ELECTRICAL - TYPE

PHOTOVOLTAIC POWER SOURCE



# EATON®

General Duty Safety Switch  
Interrupteur de sécurité à usage général  
Interruptor de seguridad de servicio general

60 A, 240 V~, 60 Hz

Complete ratings inside  
Valeurs nominales complètes à l'intérieur  
Información completa de capacidades en el interior

Further instructions inside  
Autres instructions à l'intérieur  
Instrucciones adicionales en el interior

Made in U.S.A. / Fabriqué aux É.-U. / Hecho en E.U.A.



## ⚠ DANGER

**HAZARDOUS VOLTAGE. WILL CAUSE SEVERE INJURY OR DEATH.**

- Never operate switch with cover open.
- Turn OFF power ahead of switch before doing any work inside. Replace all parts. Close cover before turning power ON.

**TENSION DANGEREUSE. PEUT CAUSER DES BLESSURES GRAVES OU LA MORT.**

- Ne jamais manœuvrer l'interrupteur lorsque le couvercle est ouvert.
- Couper l'alimentation en amont de l'interrupteur avant toute intervention. Remplacer les pièces. Fermer le couvercle avant de remettre sous tension.

## ⚠ PELIGRO

**VOLTAJE PELIGROSO. PUEDE CAUSAR HERIDAS SEVERAS O LA MUERTE.**

- Nunca opere el interruptor con la cubierta abierta.
- Desconectar la alimentación del interruptor antes de trabajar dentro del mismo. Reemplazar todas las partes. Cerrar la cubierta antes de energizar el interruptor.

30-43080

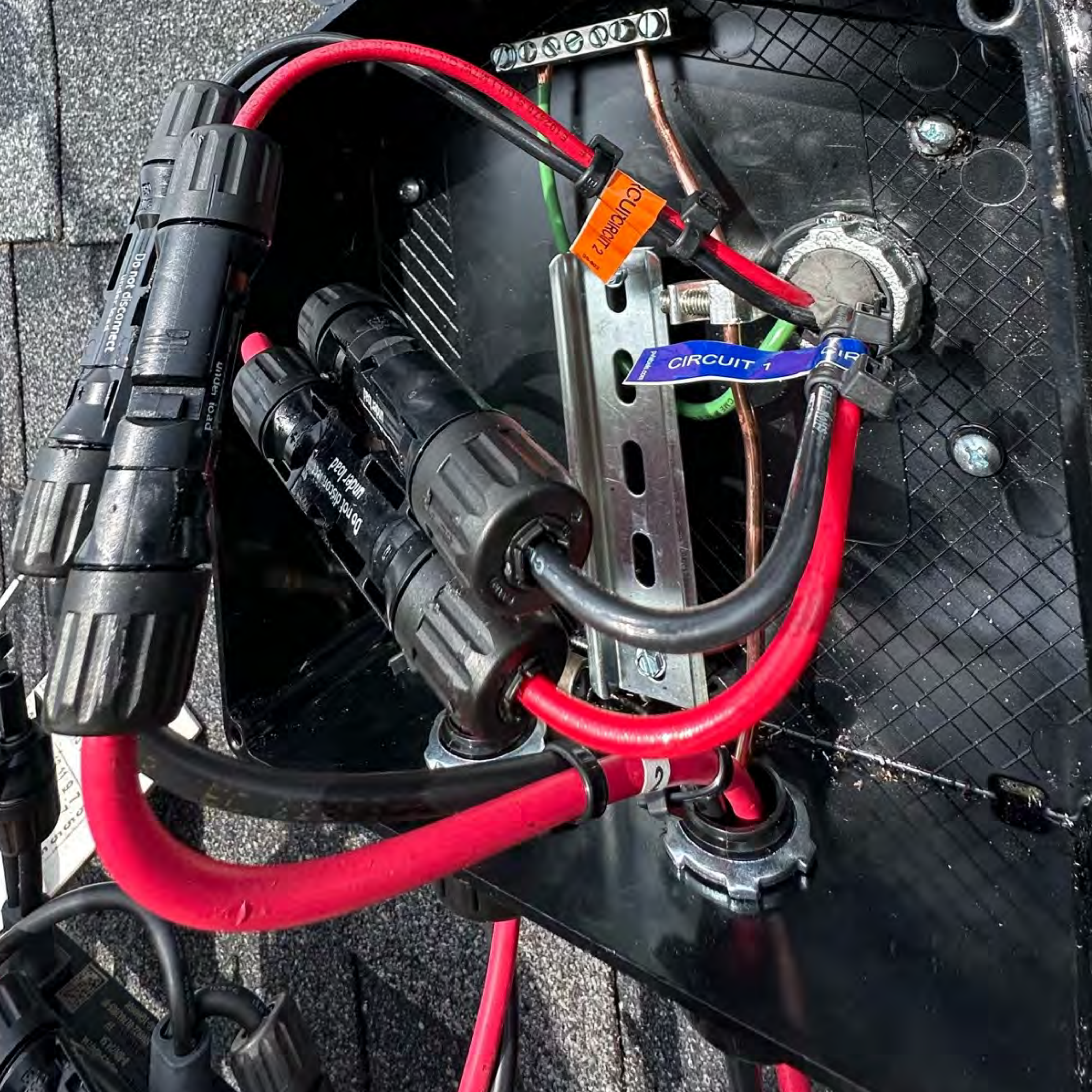


Steph on Rogers  
3445 Rawls Church Rd, Farmville - VA 22426  
22826  
VA 22426, NC

**WARNING!**  
RISK OF ELECTRICAL SHOCK. DC OR AC VOLTAGE SURFACES ARE CONNECTED INSIDE THIS EQUIPMENT. EACH CIRCUIT MUST BE INDIVIDUALLY DISCONNECTED BEFORE SERVICING AND WHEN THE PHOTOVOLTAIC ARRAY IS EXPOSED TO LIGHT, IT SUPPLIES VOLTAGE TO THIS EQUIPMENT.

REFER TO INSTALLATION MANUAL  
TIGHTEN 5/16 IN NUTS  
TORQUE FOR ALL SCREWS & BOLTS: 15-20 LB-IN  
CONFORMS TO UL STANDARD 1741

UL LISTED  
NEMA 3R







10 AWG (5.26 mm²) CHISEL

2nd In

2nd In

Backup Interface

pvlabs.com

17



CENTRON®

0002336435  
FCC ID: SK9AMI7, IC:864G-AMI7, MODEL:AMI7

988 888888  
120 240 50 V<sub>A</sub> V<sub>A</sub> V<sub>A</sub> CCUMPFNKWARH

CL200 240V 3W TYPE C2M 30TA 1.0Kh

\*ZZZ B18167 H67\*

CA 0.5  
FM2S  
60HZ

DUKE ENERGY PROGRESS

330 758 447

F120529

OpenWay  
by Itron

10/19







