

36

CAUTION

NEVER TOUCH THE SURFACE OF THE POWER SUPPLY UNIT OR THE POWER SUPPLY UNIT WHEN THE POWER SUPPLY UNIT IS ON. TO AVOID ELECTRIC SHOCK, DO NOT TOUCH THE POWER SUPPLY UNIT OR THE POWER SUPPLY UNIT WHEN THE POWER SUPPLY UNIT IS ON. TO AVOID ELECTRIC SHOCK, DO NOT TOUCH THE POWER SUPPLY UNIT OR THE POWER SUPPLY UNIT WHEN THE POWER SUPPLY UNIT IS ON.

WARNING

ELECTRIC SHOCK HAZARD: THE DC CONDUCTORS OF THE PHOTO COPY SYSTEM ARE UNGROUNDING AND MAY BE ENERGIZED.

AVERTISSEMENT

NEVER TOUCH THE SURFACE OF THE POWER SUPPLY UNIT OR THE POWER SUPPLY UNIT WHEN THE POWER SUPPLY UNIT IS ON. TO AVOID ELECTRIC SHOCK, DO NOT TOUCH THE POWER SUPPLY UNIT OR THE POWER SUPPLY UNIT WHEN THE POWER SUPPLY UNIT IS ON.















0174430E3-74



Do Not Remove 174A30E3-74



SolarEdge Technologies Ltd.  
SolarEdge Technologies GmbH/  
Werner Eckert Straße 6/81829  
Munich/Germany



## CAUTION

HOT SURFACES TO REDUCE THE RISK OF BURNS-DO NOT TOUCH. RISK OF ELECTRIC SHOCK-WHEN THE PHOTOVOLTAGE ARRAY IS EXPOSED TO LIGHT, IT SUPPLIES A DC VOLTAGE TO EQUIPMENT. COVER PV MODULE WITH OPAQUE MATERIAL BEFORE CONNECTING OR DISCONNECTING THIS OPTIMIZER. DURING FAULT, ZERO CURRENT IS SOURCED INTO DC ARRAY BY CONVERTER.

SolarEdge Technologies Ltd.  
Power Optimizer

Solaredge Technologies GmbH/  
Werner-Eckert-Strasse 6/81829  
Munich/Germany

## WARNING

ELECTRIC SHOCK HAZARD. THE DC CONDUCTORS OF THIS PHOTOVOLTAGE SYSTEM ARE UNGROUNDED AND MAY BE ENERGIZED.



## AVERTISSEMENT

RISQUE DE CHOC ELECTRIQUE. QUAND LE CHAMP PHOTOVOLTAIQUE EST EXPOSE A LA LUMIERE, UNE TENSION CC EST FOURNIE A CET EQUIPEMENT. SURFACES CHAUDES- NE PAS TOUCHER. AFIN DE REDUIRE LES RISQUES DE BRULURES LE COURANT DE RETOUR INJECTE PAR LE CONVERTISSEUR EN CAS DE DEFAILLANCE DANS LE MODULE PV EST TOUJOURS NUL.














































36

MISSION SOLAR ENERGY 

Serial No. **M230414-B0560**



Model Number	<b>MSE3958X9R</b>
Rated Maximum Power	[W] <b>395 (-0/+3%)</b>
Open - Circuit Voltage	[V] <b>45.2</b>
Voltage at Pmax	[V] <b>37.0</b>
Short - Circuit Current	[A] <b>11.24</b>
Current at Pmax	[A] <b>10.68</b>
Max. System Voltage	[V] <b>1000</b>
Max. Series overcurrent protective device (where required) fuse rating	[A]
Standard test condition	



20 AM=1.5 E=1000W/m<sup>2</sup>

For field connections, use Cu only, 12AWG (US, CANADA), 4mm<sup>2</sup> (EU, AM) insulated for a minimum of 90°C, rated for wet conditions and violet radiation (where exposed). See installation manual for details and compatibility. Avertissement Risque produit des tensions élevées dans la ligne. Ne pas toucher, brûler ou de provoquer.

Fire Rating: Type 1  
Class of Protection: IP67

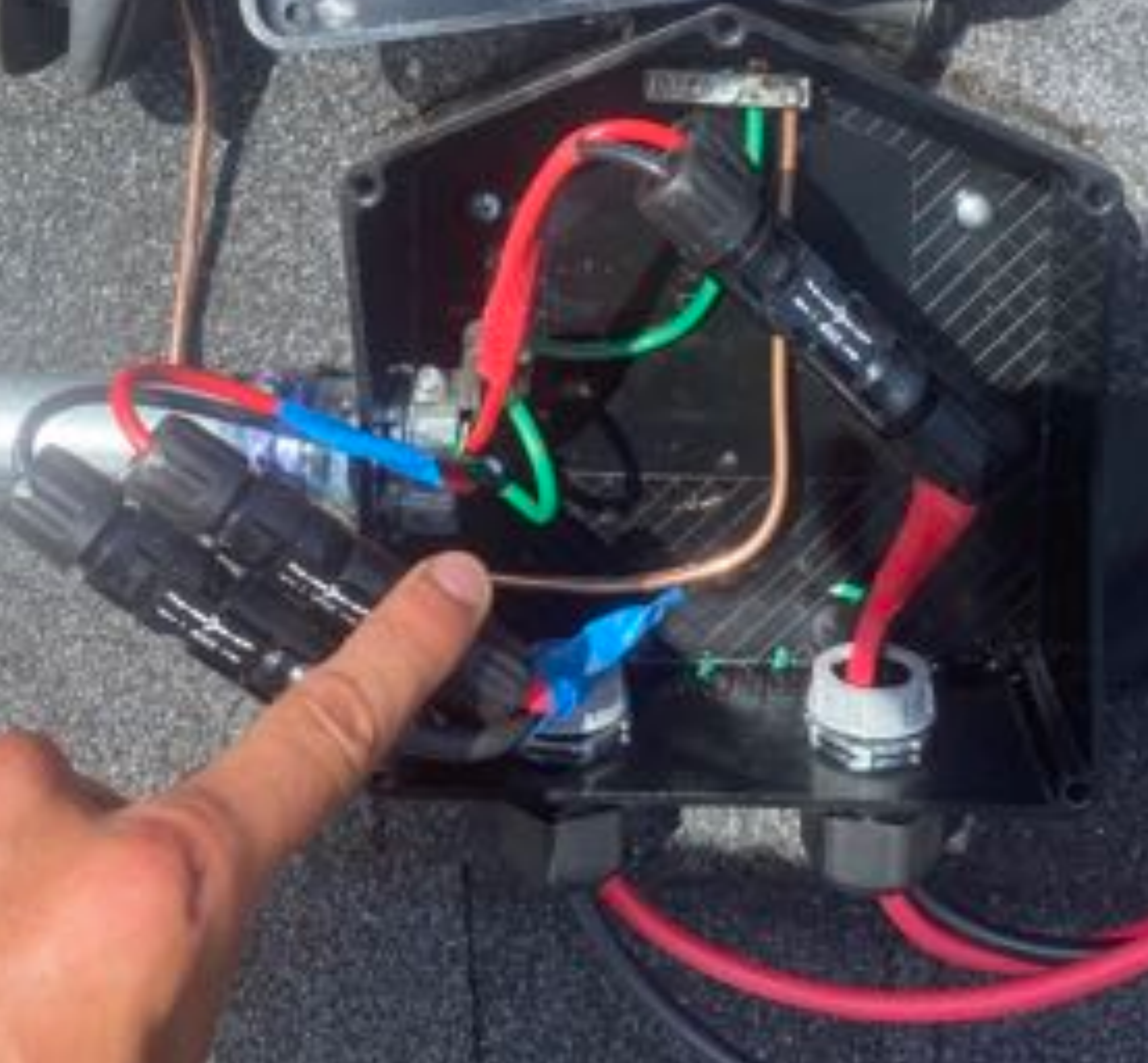


Maria T Flores Zarate  
36 Storewood LN,  
Sanford, NC 27332

SEE ELECTRICAL CONTRACTOR  
FOR WIRE SIZES  
AND TO BE INSTALLED PER ALL LOCAL  
AND NATIONAL ELECTRICAL CODES



Model 10000  
10000





Maria T Flores Zarate

36 Stonewood LN,

Sanford, NC 27332

NEC 700.23(A) AND (B) SHALL  
BE USED FOR THE  
WIRING OF THE SYSTEMS AND THE  
SYSTEMS SHALL BE INSTALLED  
IN ACCORDANCE WITH THE  
NEC 700.23(A) AND (B)



Inventek  
60134223 VEMA 3P





































Maria T Flores Zarate

36 Storewood LN,

Sanford, NC 27332

SEE ELECTRICAL CODES  
FOR ALL WIRING  
INSTALLATION. SEE WIRING INSTRUCTIONS  
FOR THE MODEL NUMBER LIST.



UL  
LISTED  
MODEL NUMBER LIST





Maria T Flores Zarate

36 Stonewood LN,

Sanford, NC 27332

NEC 700.23(A) AND (B) SHALL  
BE USED FOR THE  
WIRING OF THE SYSTEMS AND THE  
SYSTEMS SHALL BE INSTALLED  
IN ACCORDANCE WITH THE  
NEC 700.23(A) AND (B)



Inventek  
60134223

UL 1449







F939I

295784









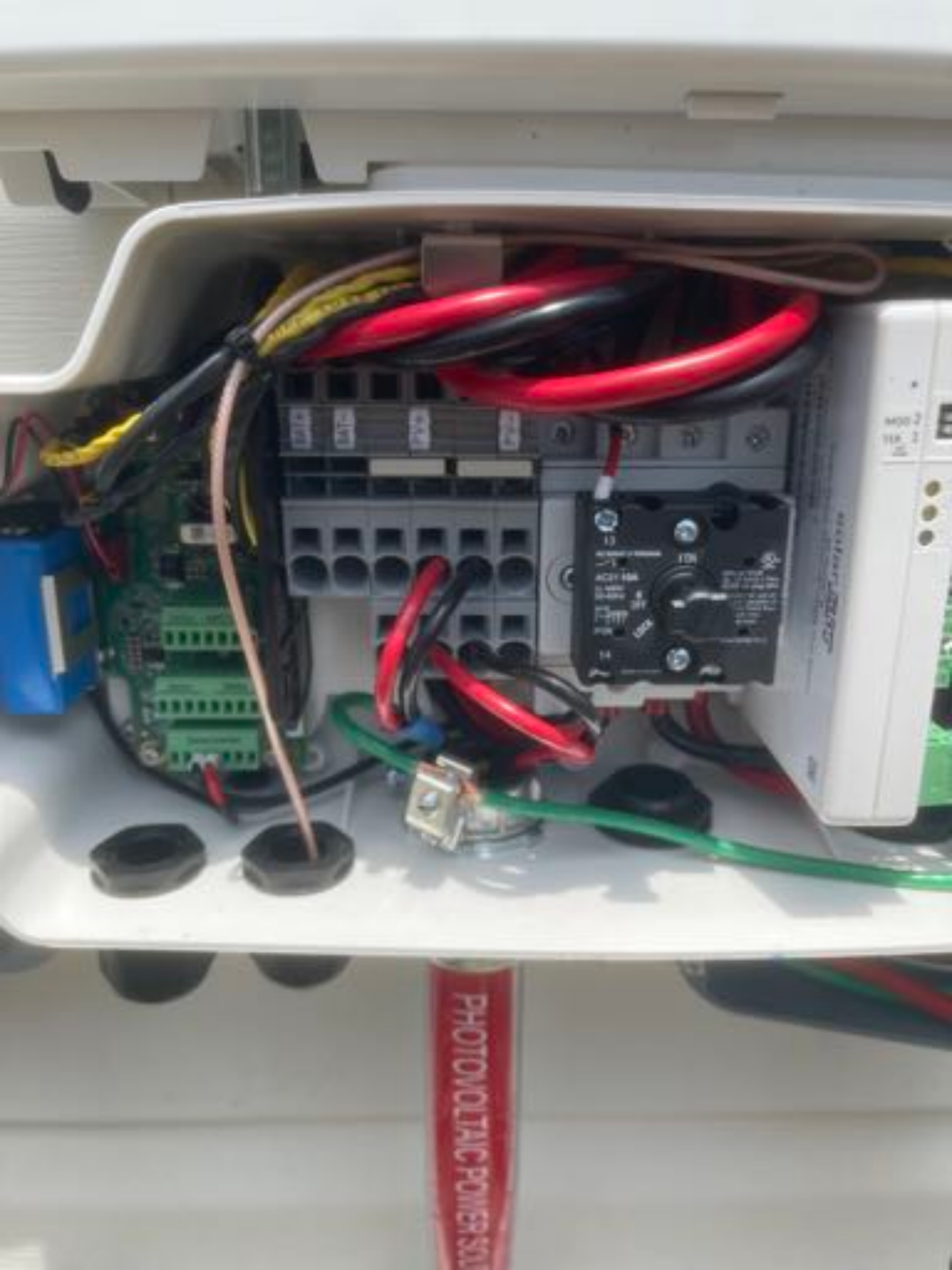












PHOTOVOLTAIC POWER SUPPLY



solar edge

HD wave





















**WARNING**

THIS EQUIPMENT FED BY MULTIPLE SOURCES. TOTAL RATING OF ALL OVERCURRENT DEVICES, EXCLUDING MAIN SUPPLY OVERCURRENT DEVICE, SHALL NOT EXCEED CAPACITY OF BUSBAR.

**SOLAR PV SYSTEM  
EQUIPPED WITH  
RAPID SHUTDOWN**



TURN RAPID SHUTDOWN SWITCH TO THE 'OFF' POSITION TO SHUT DOWN PV SYSTEM AND REDUCE SHOCK HAZARD IN THE ARRAY

**solar edge**

**HD** WAVE

ON

OFF



MAXIMUM VOLTAGE 480  
MAXIMUM CIRCUIT CURRENT 16.5

**solar edge**



**CAUTION**  
DANGER OF ELECTRICITY



**CAUTION: SOLAR ELECTRIC  
SYSTEM CONNECTED**

**WARNING**  
Do not touch exposed  
conducting parts under  
any circumstances.  
See the instructions  
for more information.  
**WJ-100**







36

CAUTION

NEVER TOUCH THE SURFACE OF THE DEVICE OR THE CABLES WHEN THE DEVICE IS PLUGGED INTO A POWER SOURCE. TO AVOID ELECTRIC SHOCK, DO NOT TOUCH THE SURFACE OF THE DEVICE OR THE CABLES WHEN THE DEVICE IS PLUGGED INTO A POWER SOURCE. TO AVOID ELECTRIC SHOCK, DO NOT TOUCH THE SURFACE OF THE DEVICE OR THE CABLES WHEN THE DEVICE IS PLUGGED INTO A POWER SOURCE.

WARNING

ELECTRIC SHOCK HAZARD: THE DC CONDUCTORS OF THE PHOTOCHARGE SYSTEM ARE UNINSULATED AND MAY BE ENERGIZED.

AVERTISSEMENT


NE PAS TOUCHER LA SURFACE DE L'APPAREIL NI LES CÂBLES QUAND L'APPAREIL EST BRÛLÉ À LA CHARGE. NE PAS TOUCHER LA SURFACE DE L'APPAREIL NI LES CÂBLES QUAND L'APPAREIL EST BRÛLÉ À LA CHARGE. NE PAS TOUCHER LA SURFACE DE L'APPAREIL NI LES CÂBLES QUAND L'APPAREIL EST BRÛLÉ À LA CHARGE.







36

MISSION SOLAR ENERGY 

Serial No. **M230414-B0560**



Model Number	<b>MSE3958X9R</b>
Rated Maximum Power	[W] <b>395 (-0/+3%)</b>
Open - Circuit Voltage	[V] <b>45.2</b>
Voltage at Pmax	[V] <b>37.0</b>
Short - Circuit Current	[A] <b>11.24</b>
Current at Pmax	[A] <b>10.68</b>
Max. System Voltage	[V] <b>1000</b>
Max. Series overcurrent protective device (where required) fuse rating	[A]
Standard test condition	



For field connections, use Cu only, 12AWG (US, CANADA), 4mm<sup>2</sup> (EU, AM) insulated for a minimum of 90°C, rated for wet conditions and violet radiation (where exposed). See installation manual for details and compatibility. Avertissement Risque produit des tensions élevées dans la ligne. Ne pas toucher, brûler ou de provoquer un incendie.

Fire Rating: Type 1  
Class of Protection: IP65

AM=1.5 E=1000W/m<sup>2</sup> T=25°C



Maria T Flores Zarate

36 Storewood LN,

Sanford, NC 27332

SEE ELECTRICAL CODES  
FOR ALL WIRING  
INSTALLATION. SEE WIRING INSTRUCTIONS  
FOR THE MODEL NUMBER LIST.



UL LISTED  
UL 1008











## Wi-Fi Connected

Wi-Fi SSID: SEDG-75010E84-08



Wi-Fi connection established successfully

Continue





## Pairing Complete

Pairing completed successfully



Done

Start another pairing

Disconnect from device





Grid Monitoring Completed.



Pairing Completed.

**solar**edge

SN 75010E84-08



## Status

## Inverter

SN 75010E84-08

### Summary



Power

0 W



Voltage

250 Vac



Frequency

60 Hz

P\_OK: 19 of 19

Optimizers Communicating

Server Comm.

S\_OK

Cellular



Status

Idle

Power Limit

6 kW

Switch is

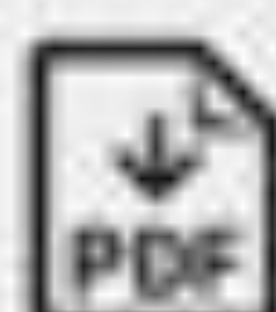
On

Cos Phi

Q

Country

Disconnect from device





Grid Monitoring Completed.



Pairing Completed.

**solar**edge

SN 75010EB4-08

Cos Phi  
1Q  
141 VARCountry  
US 240VDC Voltage  
399 VdcIsolation  
11000 kOhmTemp.  
100° FAFCI  
Manual Reconnect**Communication**Ethernet  
No CableRS485-1  
Modbus  
0 of 0RS485-2  
SE FollowerCellular  
T-MobileWi-Fi  
NCZigBee  
NA

Disconnect from device





Grid Monitoring Completed.



Pairing Completed.

**solar**edge

SN 75010EB4-08



## Communication

Ethernet  
No CableRS485-1  
Modbus  
0 of 0RS485-2  
SE FollowerCellular  
T-MobileWi-Fi  
NCZigBee  
NA

## Inverter Energy

Today  
10 WhThis Month  
10 WhThis Year  
10 WhTotal  
10 Wh

Commissioning



Disconnect from device













