







www.SOLARIX.com

PowerX-390R

Peak Power	(P _{max})	390 W
Power Range		0.1-45 W
Voltage at Peak	(V _{max})	30.42 V
Current at Peak	(I _{max})	12.82 A
Open Circuit Voltage	(V _{oc})	36.54 V
Short Circuit Current	(I _{sc})	13.50 A
Maximum Series Fuse		25 A

© 2009 Solarix Electronics, Inc. All rights reserved. All trademarks are the property of their respective owners.



Model PowerX-390R

Peak Maximum Temperature: 40°C
Maximum Storage Temperature: 40°C
Maximum Humidity: 95%



WARNING
CAUTION
Read the manual
before use.



CE Marking Class II, Type 1
Marked Class II

See Instruction Manual for
operation. Do not use in
atmosphere where the
conductivity is high. Do not use in
explosive atmosphere.



Manufacturer: Solarix Electronics, Inc. 13801 DL
Houston, TX 77033

3185 Raynor McLamb Road
Linden, NC 28356













MODEL: 17A-02-01
SHUT-DOWN EQUIP
EPL 1403300-00-0
EPL OF 2231100-00083

MAX DC VOLTAGE 280V
OPERATING DC VOLTAGE 0-160V
MAX CURRENT 15A

MAX SHORT CIRCUIT CURRENT 17A
SHUT-DOWN TIME LIMIT 10SEC
OPERATING TEMP -45C TO 70C
NEMA 4XIP55
MADE IN USA



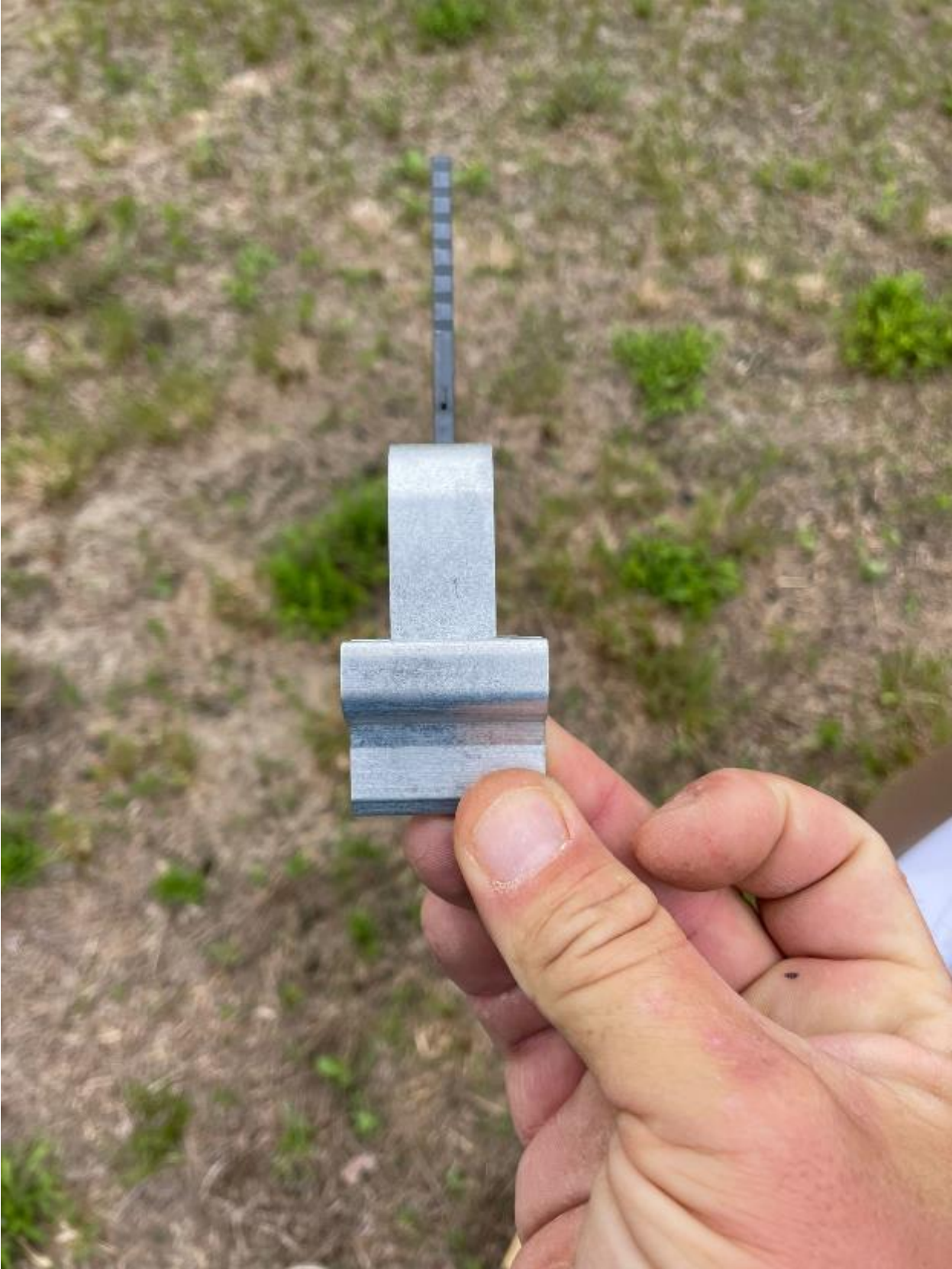
Intertek
DIVISION
CONFORMS TO IEC 61010-1:2011































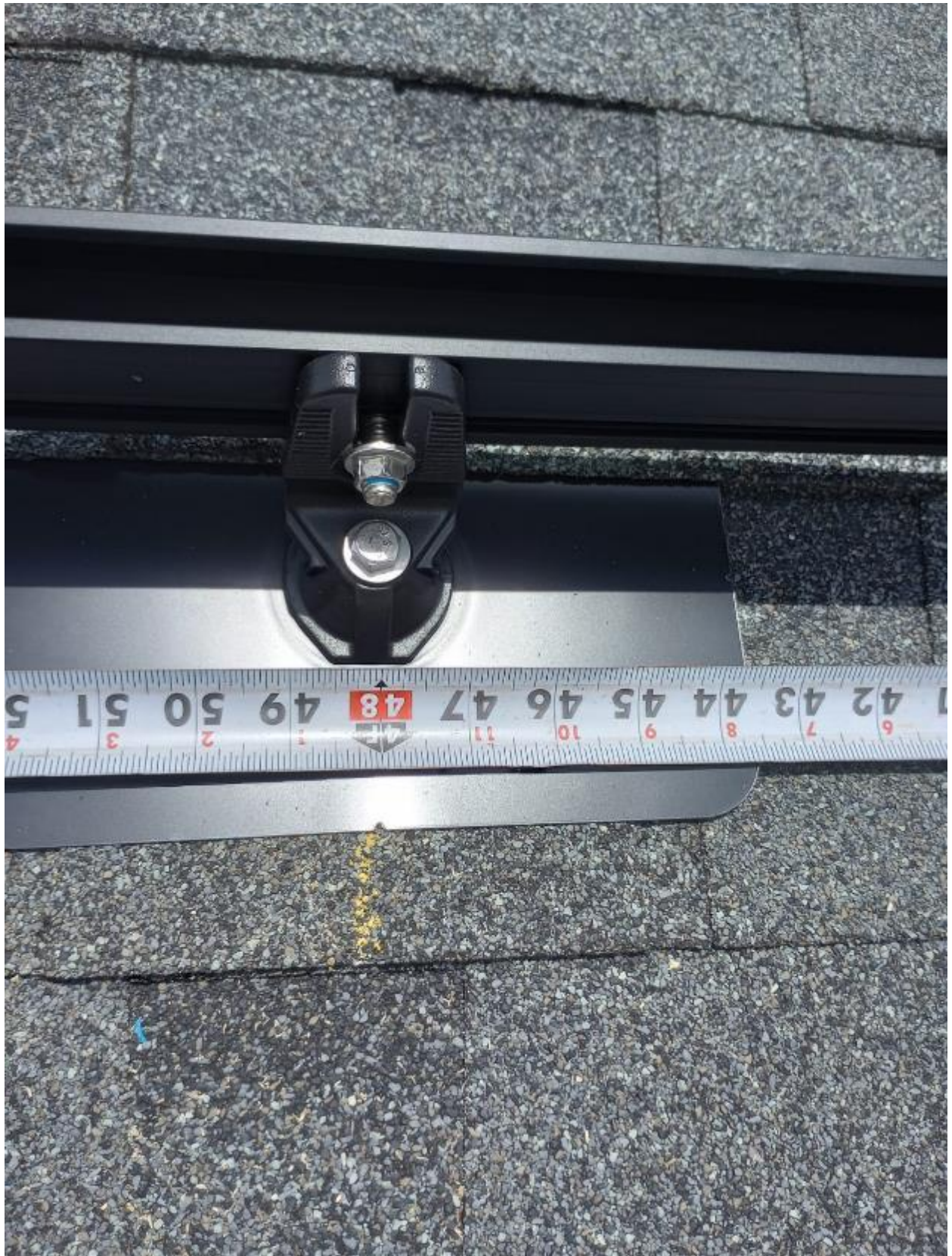










































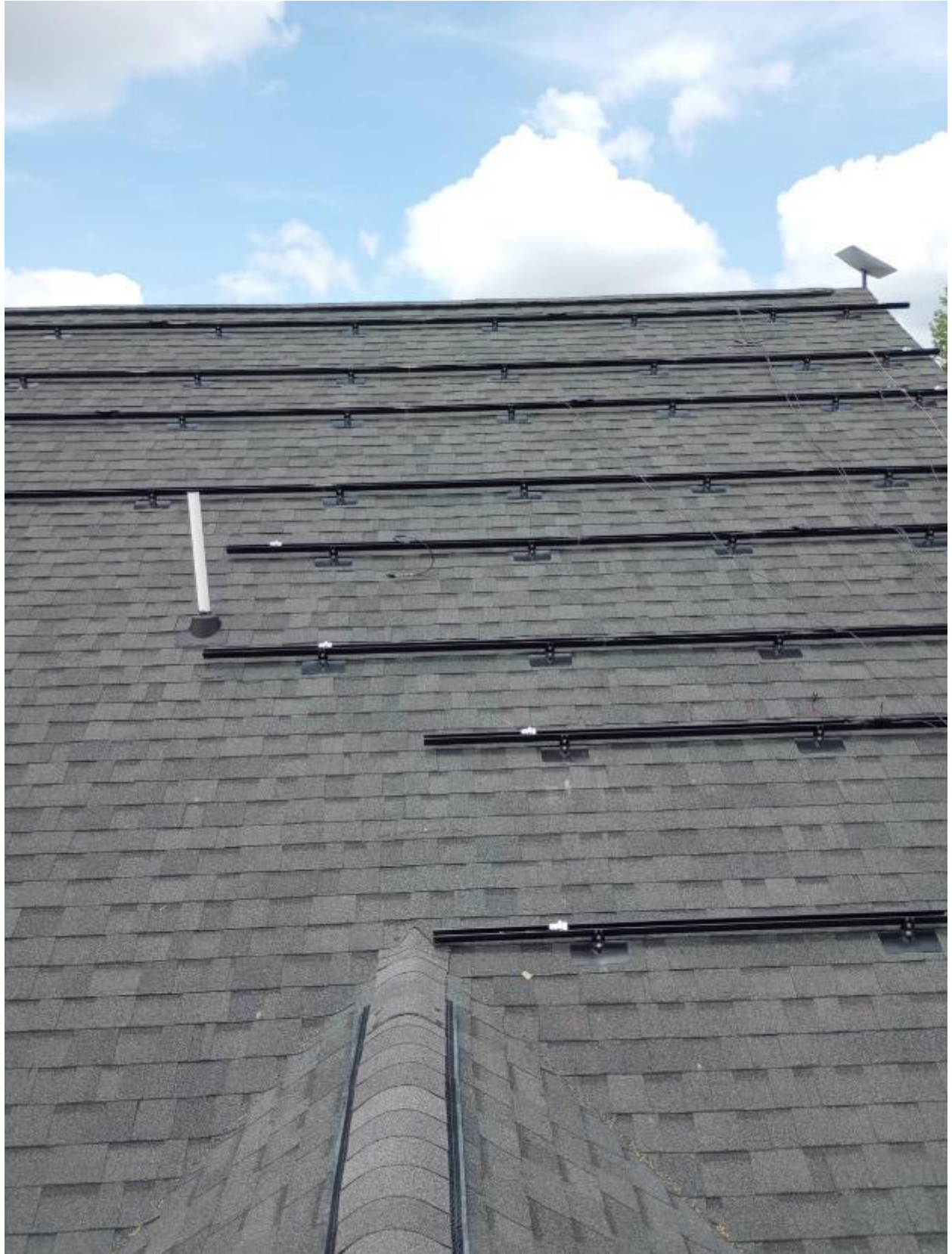




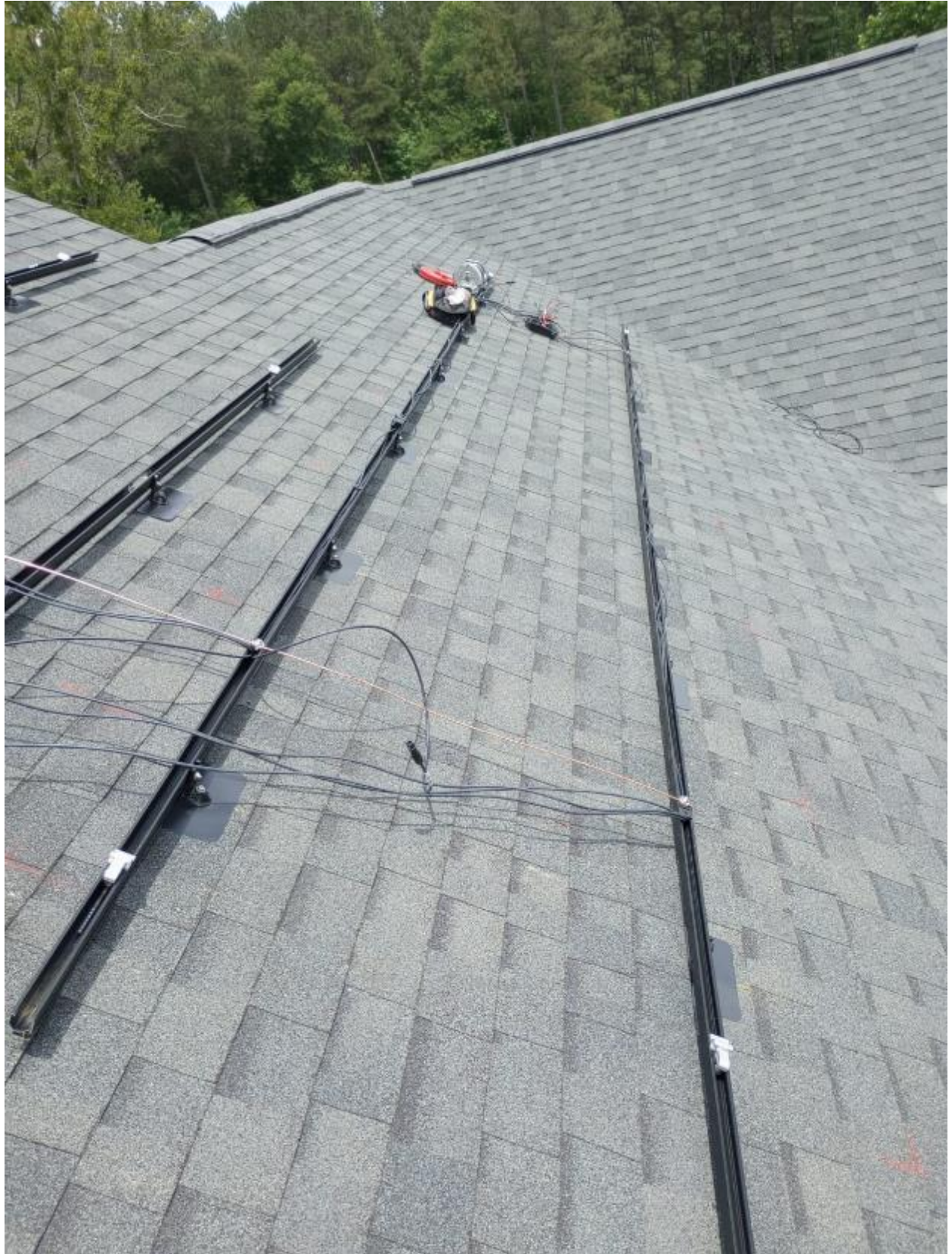






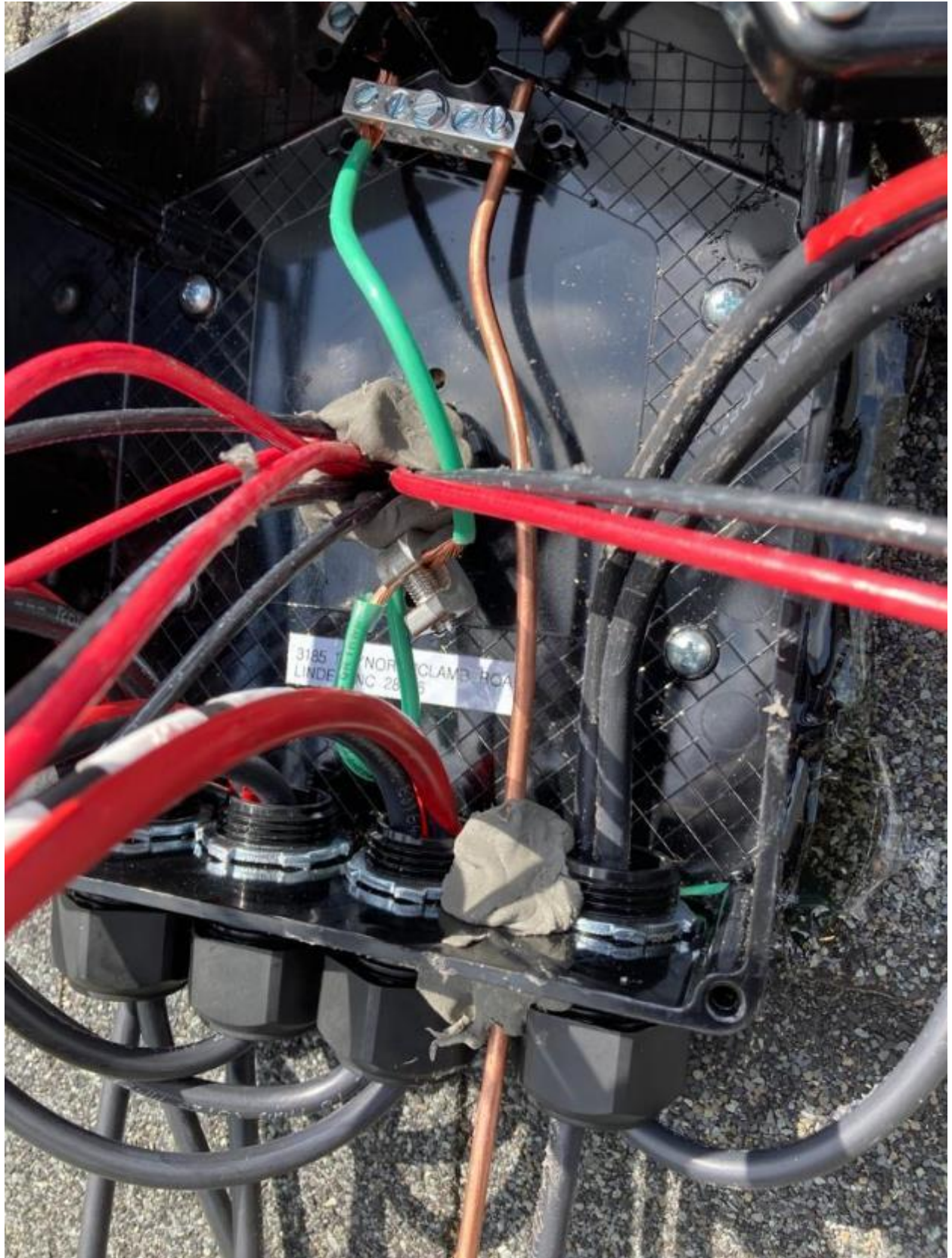














3185 RAYNOR MCLAMB ROAD
LINDEN NC 28356

**WARNING: PHOTOVOLTAIC
POWER SOURCE**

JB-1.2

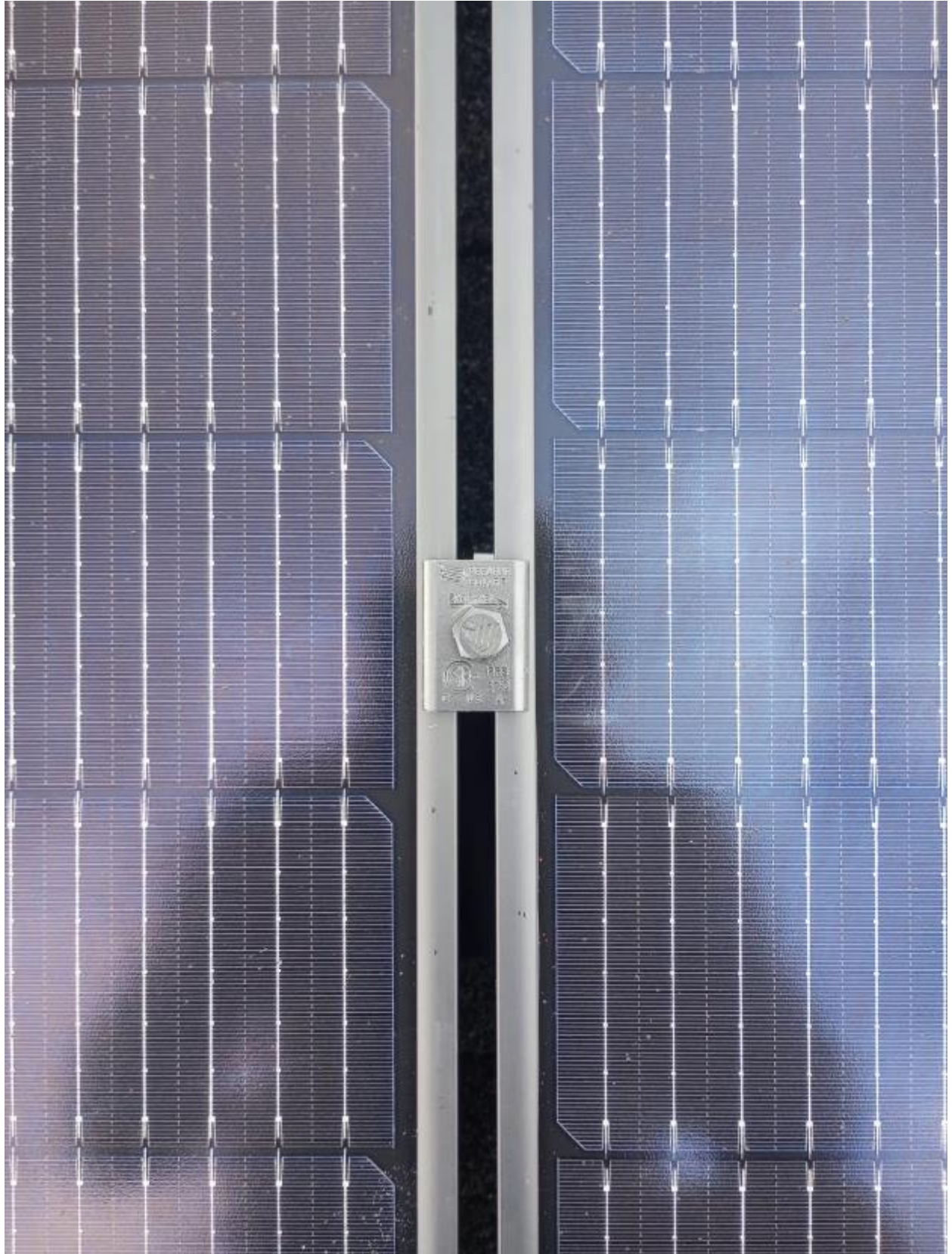
EZ ⚡
SOLAR













www.SOLARIX.com

PowerX-390R

Peak Power	(P _{max})	390 W
Power Range		-0 / +5 W
Voltage at P _{max}	(V _{mp})	30.62 V
Current at P _{max}	(I _{mp})	12.82 A
Open Circuit Voltage	(V _{oc})	36.54 V
Short Circuit Current	(I _{sc})	13.50 A
Maximum Series Fuse		25 A

At 25°C at standard test conditions, 1000 W/m², AM 1.5 spectrum, 35°C.
Tolerances: ±0.5% (V_{mp}), ±2.0% (I_{mp}), ±0.5% (V_{oc}), ±1.0% (I_{sc})



50289 US
Model: PowerX-390R-3



WARNING
Do not touch the terminals.
APPROPRIATE
PRECAUTIONS
MUST BE OBSERVED.

PowerX-390R-3
Open Circuit Voltage: +30%
Short Circuit Current: +2%

IEC Hot Spot Class C - II, Type 1
Application Class II
This product is certified for use in the following countries:
Australia, Canada, China, Europe, India, Israel, Japan, Korea, Mexico, New Zealand, South Africa, Taiwan, Thailand, USA, Vietnam, and the Middle East.
© 2015 Solarix Energy Products
CE

Maximum Permissible System Voltage: 1000V DC
Made in Taiwan
P&T: BL-2005-04





