



110217
 81 Chicora Club Drive
 0.0
 Cash

Customer Information

Project ID	110217 Automated Populated Value
Homeowner Name	110217 Automated Populated Value
Street Address	81 Chicora Club Drive Automated Populated Value
City	Dunn Automated Populated Value
State	NC Automated Populated Value
Zip Code	28334 Automated Populated Value

Finance Company	Cash Automated Populated Value
Utility Provider	South River EMC Automated Populated Value
Territory	Raleigh Automated Populated Value
Processed	No
Customer's WiFi Network Name (Leave Blank if Not Available)	
Customer's WiFi Network Password (Leave Blank if Not Available)	

Safety

SAFETY: Hazard Identification	Energized equipment Energized equipment
--------------------------------------	--

System Information

System Size (in kW)	0.0 Automated Populated Value
Module Manufacturer	SunPower Automated Populated Value
Module Model	SPR-U400-BLK Automated Populated Value

Inverter Manufacturer	SunPower Automated Populated Value
Inverter Model	H-Series Microinverters Automated Populated Value

Electrical Information

Is this a Powerwall Job? YES

HOT LINE CALL

Were design changes made in the field? NO - Build as Designed

Punchlist

Customer Information / Photo of Street Number



Donald Newman
Loc: 35.3016, -78.6784

Safety / SAFETY: Photo of Cones Behind Vehicle



Donald Newman
Loc: 35.3011, -78.6782

Electrical Information / Photo: EQ Wall Wide Shot



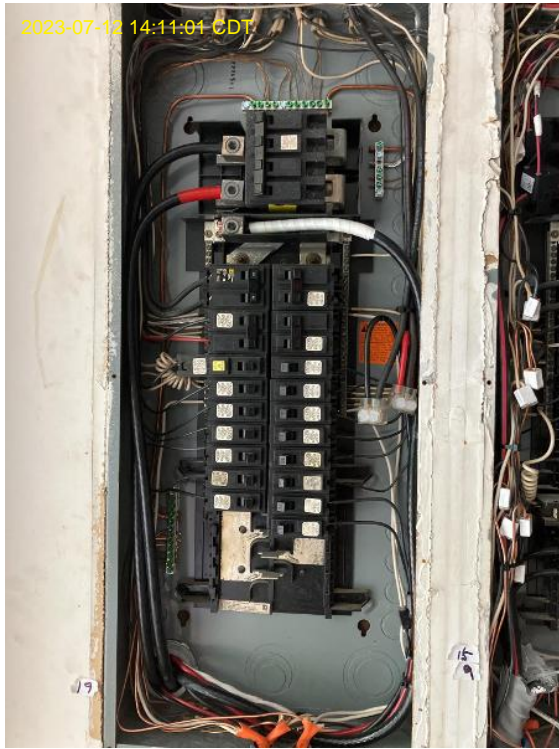
Donald Newman
Loc: 35.3011, -78.6783

Electrical Information / Photo: Grounding Electrode / GEC



Donald Newman
Loc: 35.3011, -78.6783

Electrical Information / Photo: Main Service Panel Interior



Donald Newman
Loc: 35.3011, -78.6782
Left

Electrical Information / Photo: Main Service Panel Interior



Donald Newman
Loc: 35.3011, -78.6782
Right

Electrical Information / Photo: Main Service Panel Interior



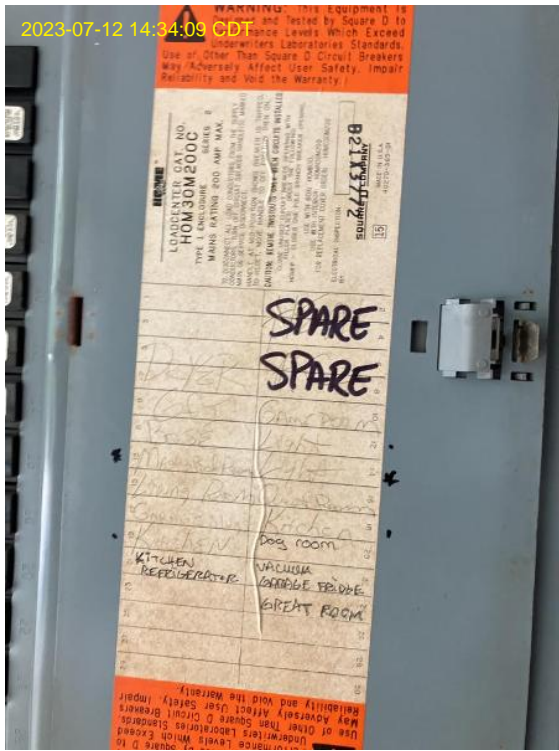
Donald Newman
Loc: 35.3011, -78.6782

Electrical Information / Main Panel Exterior



Donald Newman
Loc: 35.3011, -78.6783

Electrical Information / Main Panel Exterior



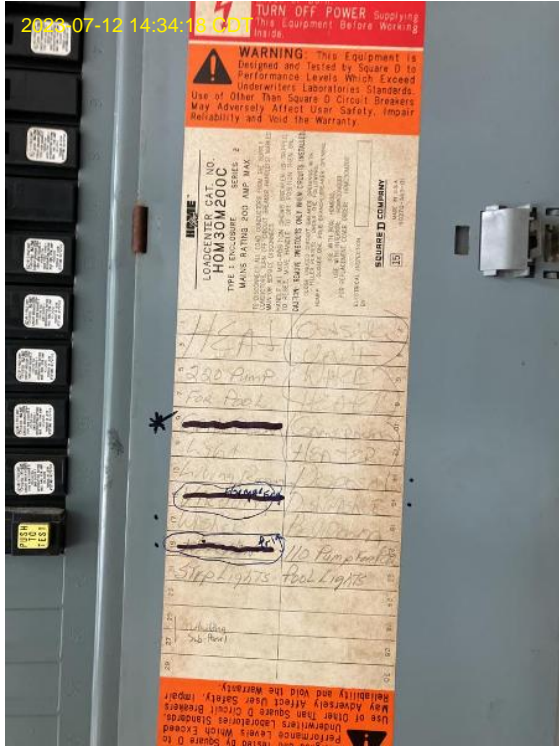
Donald Newman
Loc: 35.3011, -78.6782

Electrical Information / Main Panel Exterior



Donald Newman
Loc: 35.3011, -78.6782

Electrical Information / Main Panel Exterior



Donald Newman
Loc: 35.3011, -78.6782

Electrical Information / Main Panel Exterior



Donald Newman
Loc: 35.3011, -78.6782

Electrical Information / Main Panel Exterior



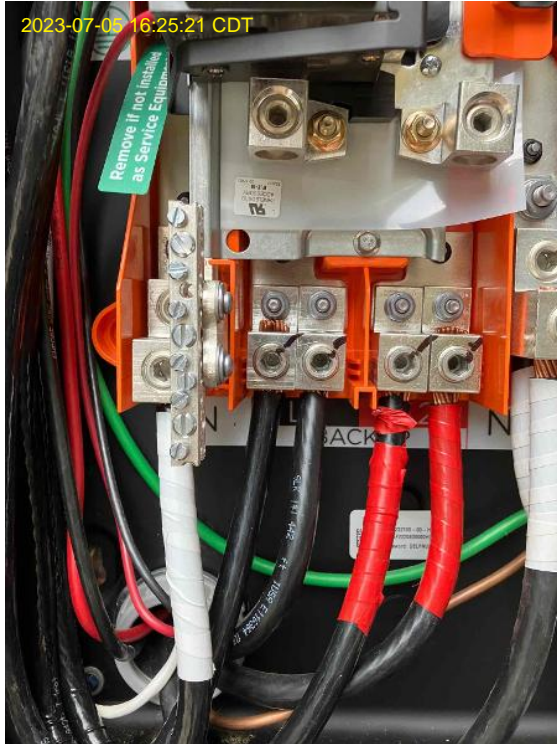
Donald Newman
Loc: 35.3011, -78.6783

Electrical Information / Main Panel Exterior



Donald Newman
Loc: 35.3011, -78.6783

Electrical Information / Photo: Interconnection (Breaker or IPCs)



Donald Newman
Loc: 35.3011, -78.6783

Electrical Information / Photo: AC Disconnect INTERIOR



Donald Newman
Loc: 35.3011, -78.6783

Electrical Information / Photo: AC Disconnect INTERIOR



Donald Newman
Loc: 35.3011, -78.6782

Electrical Information / Photo: AC Disconnect INTERIOR



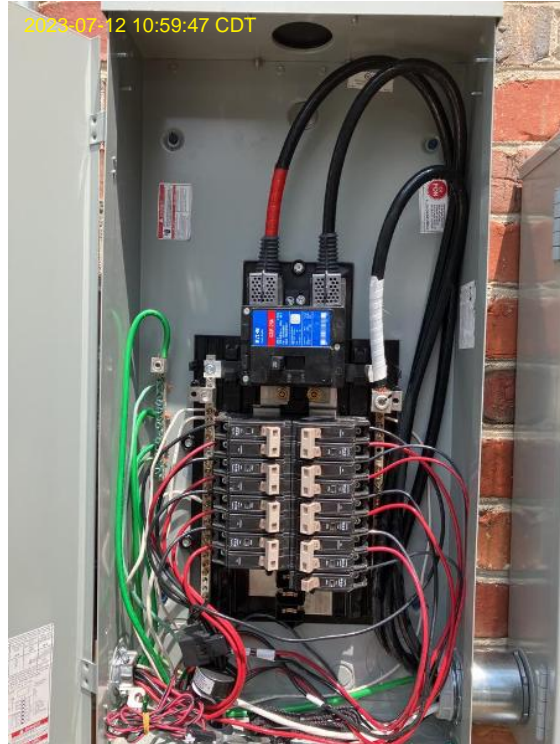
Donald Newman
Loc: 35.3011, -78.6782

Electrical Information / Photo: AC Disconnect EXTERIOR



Donald Newman
Loc: 35.3011, -78.6783

Electrical Information / Agg Panel INTERIOR



Donald Newman
Loc: 35.3011, -78.6783

Electrical Information / Agg Panel EXTERIOR



Donald Newman
Loc: 35.3011, -78.6783

Electrical Information / Photo: Production CT



Donald Newman
Loc: 35.3011, -78.6782

Electrical Information / Agg Panel w/ Deadfront On



Donald Newman
Loc: 35.3011, -78.6783

Electrical Information / Photo: PV Monitor Serial Number



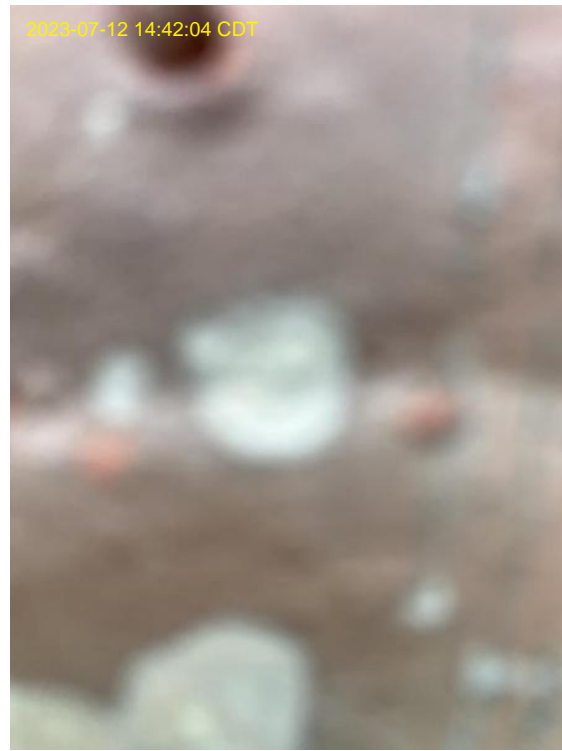
Donald Newman
Loc: 35.3011, -78.6783

Electrical Information / PVS6 Wiring



Donald Newman
Loc: 35.3011, -78.6782

Electrical Information / ProConnect App Screenshots



Donald Newman
Loc: 35.3011, -78.6783

Electrical Information / Powerwall Location



Donald Newman

Electrical Information / Powerwall Location



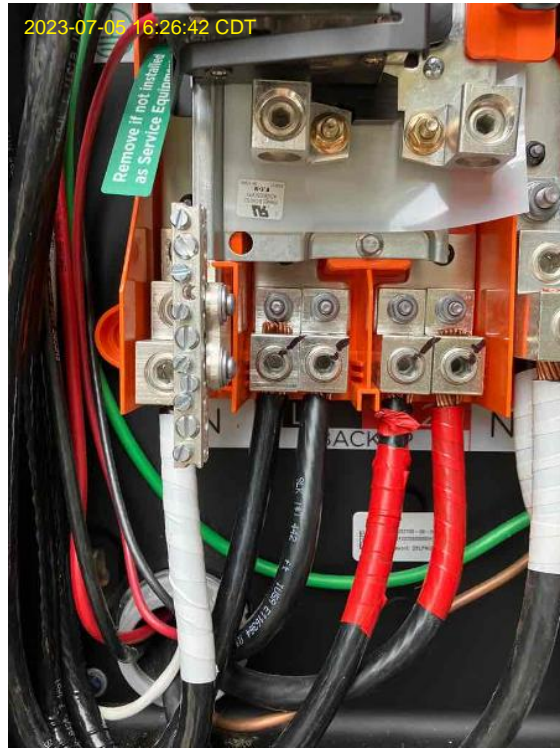
Donald Newman
Loc: 35.3011, -78.6782

Electrical Information / Tesla Gateway Interior



Donald Newman
Loc: 35.3011, -78.6783

Electrical Information / Tesla Gateway Interior



Donald Newman
Loc: 35.3011, -78.6783

Electrical Information / Tesla Production CT



Donald Newman
Loc: 35.3011, -78.6783

Electrical Information / Tesla Gateway Deadfront



Donald Newman
Loc: 35.3011, -78.6783

Electrical Information / Photo: Gateway Serial #



Donald Newman
Loc: 35.3011, -78.6783

Electrical Information / Tesla P/W WIRING COMPARTMENT



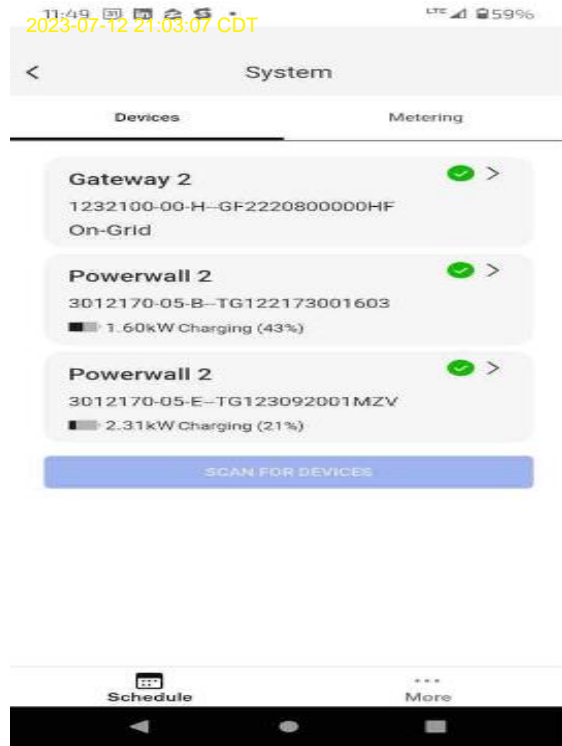
Donald Newman
Loc: 35.3011, -78.6782
Battery 1

Electrical Information / Tesla P/W WIRING COMPARTMENT



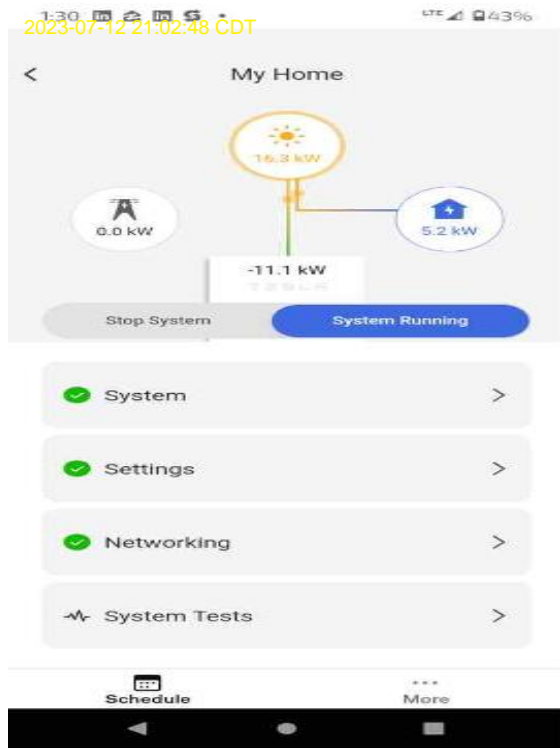
Donald Newman
Loc: 35.3011, -78.6783
Battery 2

Electrical Information / Tesla CT PHASING



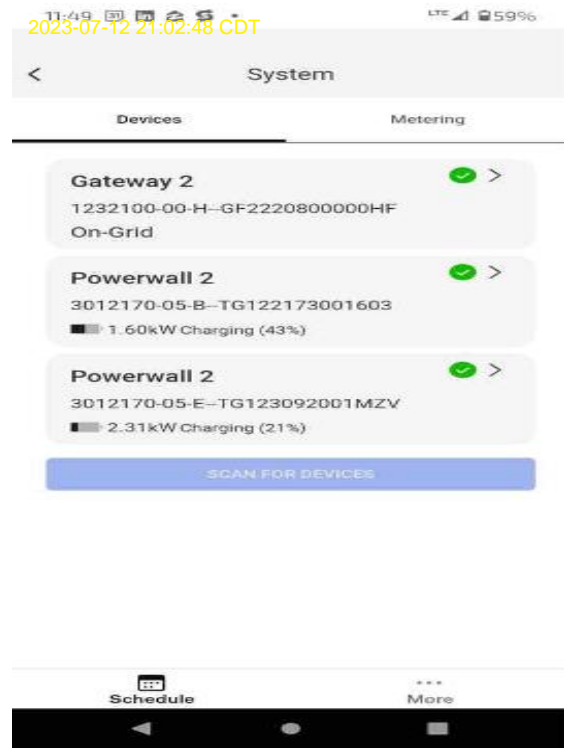
Donald Newman

Electrical Information / Tesla Commissioning Complete



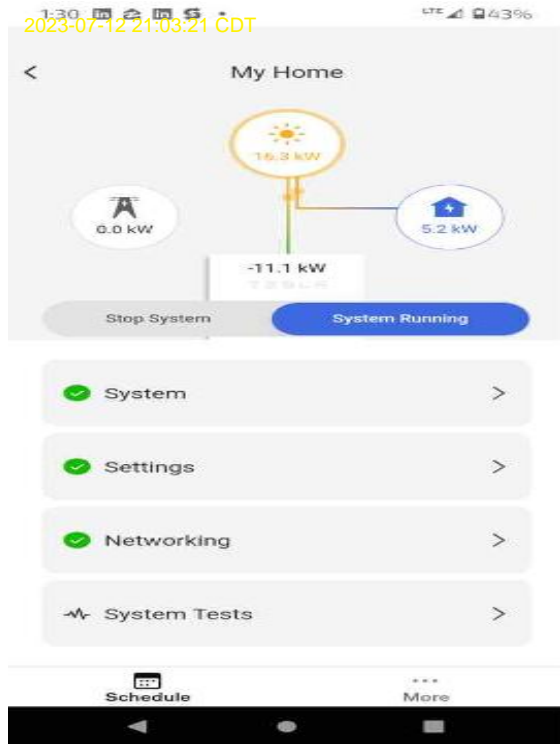
Donald Newman

Electrical Information / Tesla Commissioning Complete



Donald Newman

Electrical Information / Tesla OFF GRID TEST



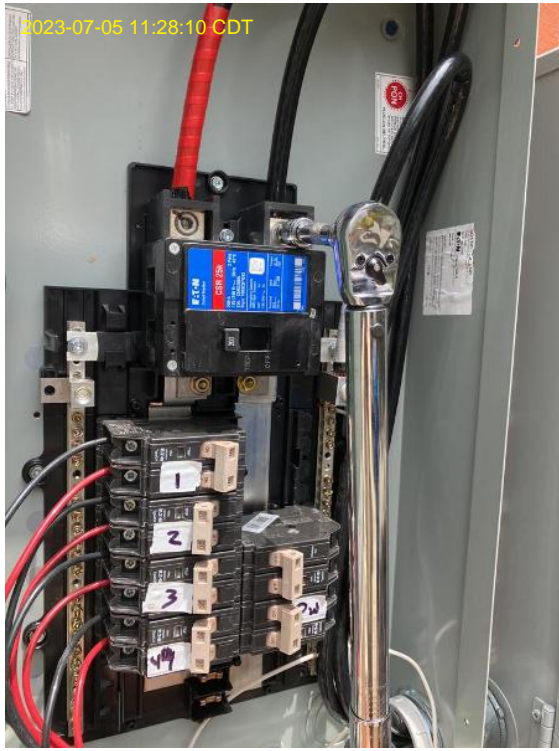
Donald Newman

Electrical Information / Additional Photos



Donald Newman
Loc: 35.3011, -78.6783

Electrical Information / Additional Photos



Donald Newman
Loc: 35.3011, -78.6783

Electrical Information / Additional Photos



Donald Newman
Loc: 35.3011, -78.6783

Electrical Information / Additional Photos



Donald Newman
Loc: 35.3011, -78.6782

Electrical Information / Additional Photos



Donald Newman
Loc: 35.3011, -78.6782



Donald Newman
Loc: 35.3011, -78.6782



Donald Newman
Loc: 35.3011, -78.6783