



LOAD





PHOTOVOLTAIC SYSTEM  
AC DISCONNECT  
**WARNING**  
DUAL POWER SUPPLY  
SOURCES: UTILITY GRID AND PV SOLAR ELECTRIC SYSTEM  
ELECTRIC SHOCK HAZARD  
DO NOT TOUCH TERMINALS  
TERMINALS ON BOTH THE LINE AND LOAD SIDES  
MAY BE ENERGIZED IN THE OPEN POSITION











PHOTOVOLTAIC SYSTEM  
AC DISCONNECT

 **WARNING** 

DUAL POWER SUPPLY

SOURCES: UTILITY GRID AND PV SOLAR ELECTRIC SYSTEM

**ELECTRIC SHOCK HAZARD**

DO NOT TOUCH TERMINALS  
TERMINALS ON BOTH THE LINE AND LOAD SIDES  
MAY BE ENERGIZED IN THE OPEN POSITION.

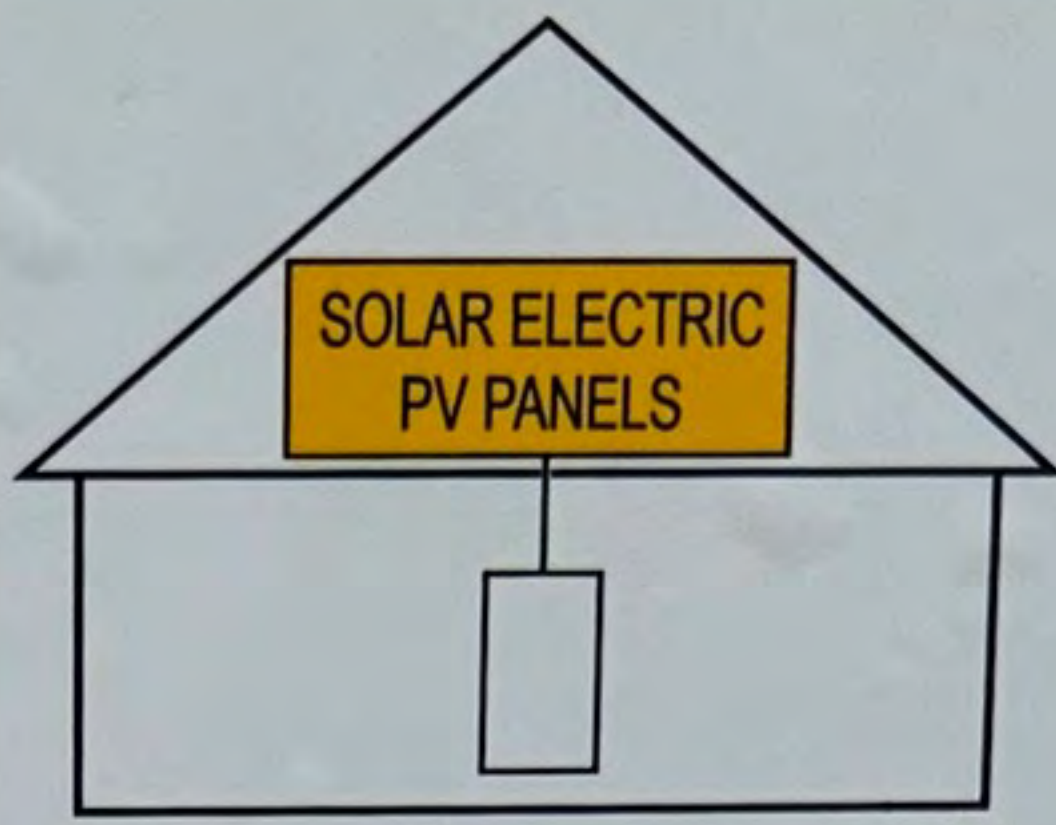






# SOLAR PV SYSTEM EQUIPPED WITH RAPID SHUTDOWN

TURN RAPID SHUTDOWN SWITCH TO THE "OFF" POSITION TO SHUT DOWN PV SYSTEM AND REDUCE SHOCK HAZARD IN THE ARRAY



solar**edge**

**HD** wave

P I O

ON

OFF

MAXIMUM VOLTAGE 480  
MAXIMUM CIRCUIT CURRENT 30  
MAX. RATED OUTPUT CURRENT OF THE CHARGE CONTROLLER OR DC-TO-DC CONVERTER (IF INSTALLED) 15

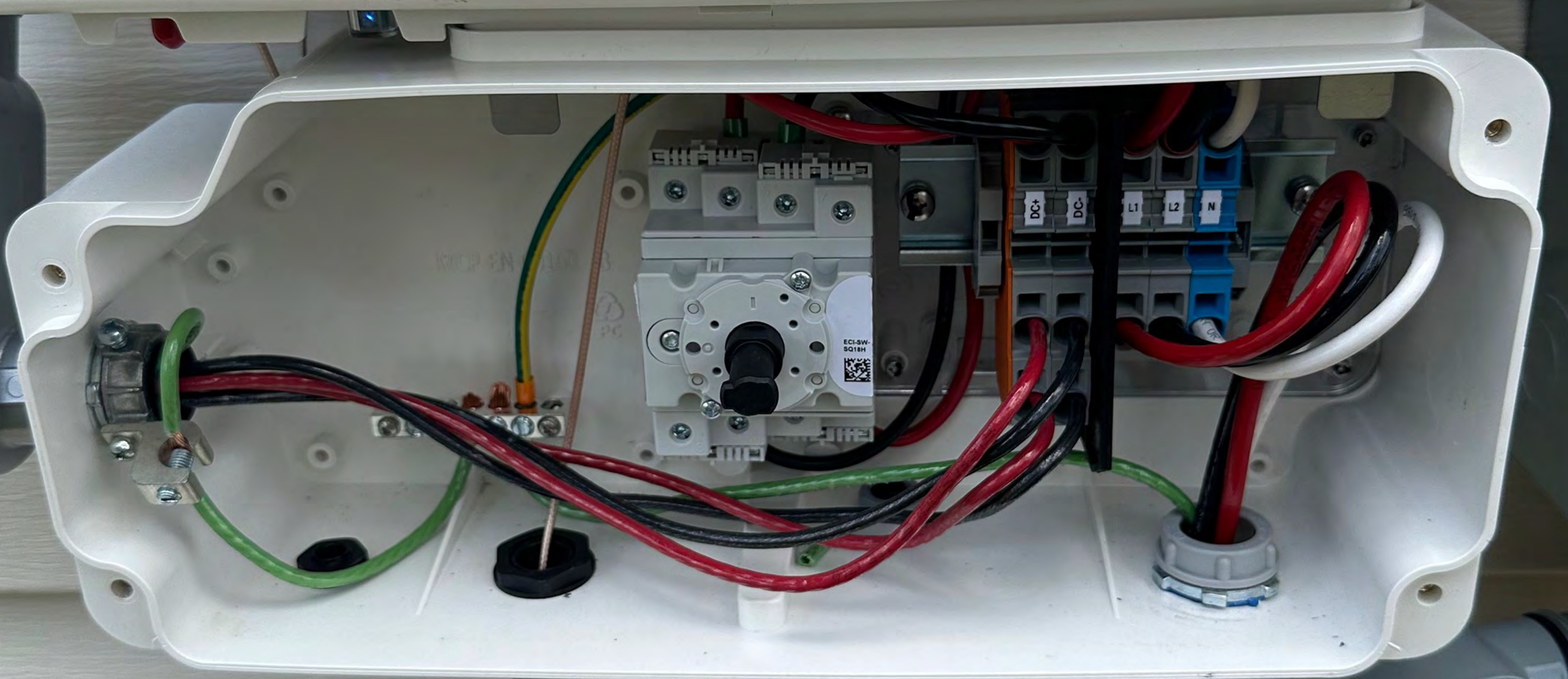
**PHOTOVOLTAIC SYSTEM DC DISCONNECT**

solar**edge**



solar **edgeae**

**HD** wave







211

VSUM





INDIA  
MAX SIZE OF  
P 2

E-491006  
3/4" COVER  
cULus



MCP-EN-001

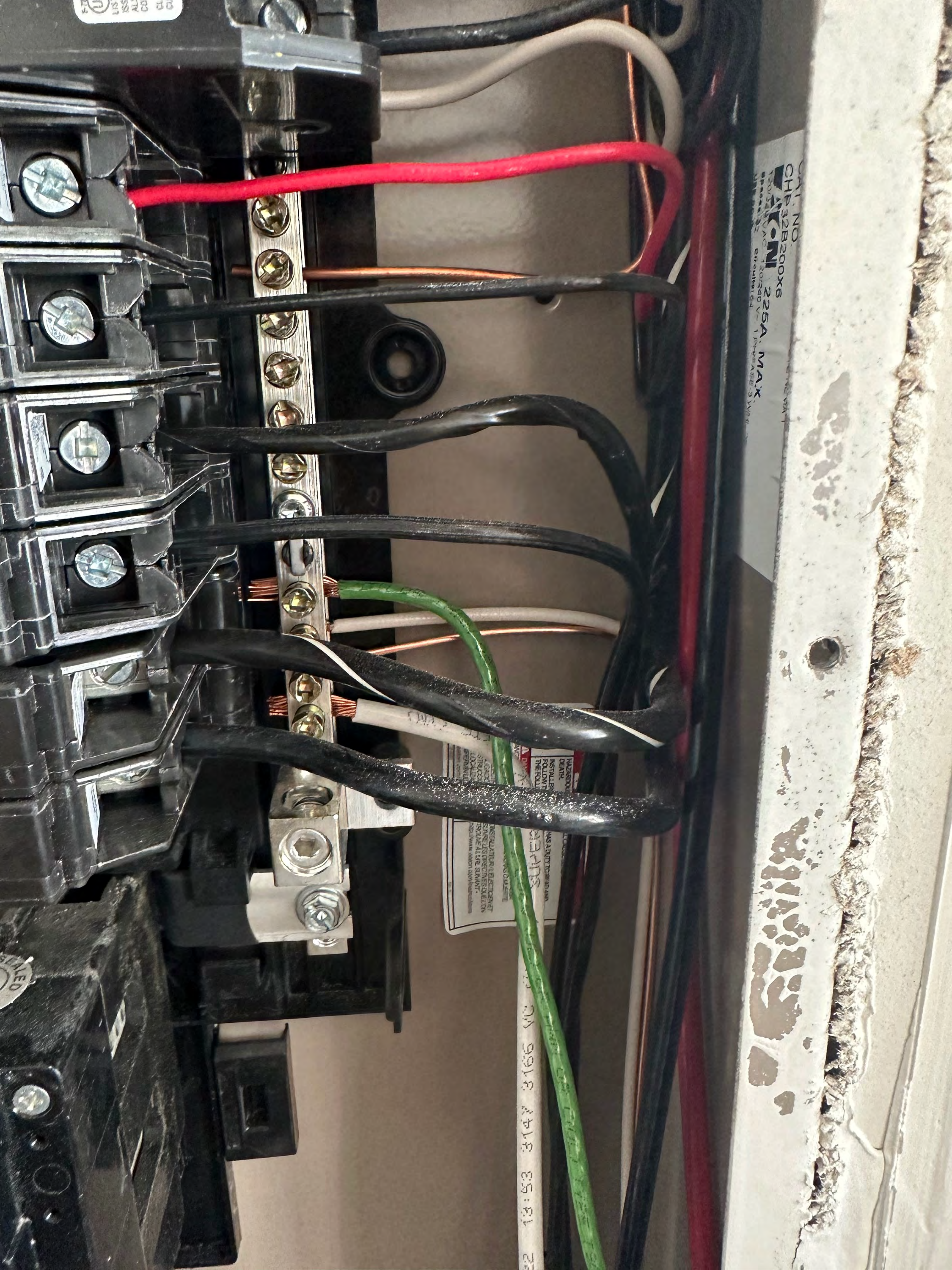
B



M3







CUT NO. 100-340 V-1 100-340 V-1 100-340 V-1 100-340 V-1

INSTALLER FOLLOW THE FOLLOWING INSTRUCTIONS TO INSTALL THE FOLLOWING DEVICES IN THE FOLLOWING MANNER:

22 13:53 3147 3166 NO. 9918 3418 35:31

WED

PR 81222









VS22212140348H

**VSUN**

Innovative & Smart  
Photovoltaic Module

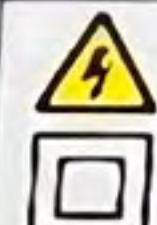
Module Type: VSUN405-108BMH

Maximum Power(Pmpp-Front) 405W  
Open Circuit Voltage(Voc-Front) 37.36V ±3%  
Short Circuit Current(Isc-Front) 13.78A ±3%  
Maximum Power Voltage(Vmpp-Front) 31.36V  
Maximum Power Current(Imp-Front) 12.92A  
Power Sorting 0±5W  
PV module classification: Type 1 (for USA only)/Class C (for Canada only)

Tolerance of Pmpp ±3%  
Series Fuse Rating 10A  
Max System Voltage 1500V  
Weight 21.4kg  
Dimension: 1722×1134×30(mm)  
STC 1000W/m<sup>2</sup>, 25°C, AM1.5  
MADE IN VIETNAM



UL 61730 & CSA 61730  
See Installation Instructions for  
Installation Requirements to Achieve a  
Specified System Fire Class Rating with  
this Product.



**WARNING**  
Hazardous Electricity  
Can shock, burn or cause  
death. Do not touch  
Terminals.

VIETNAM SUNERGY JOINT STOCK COMPANY

**AVERTISSEMENT**  
L'électricité dangereuse  
peut le faire Choc brûlures  
ou décès. Ne touchez pas le  
terminal.































Quick Mount PV®  
Patent: p.qm.solar



Do Not Remove 15509C6D-6E



Intertek  
4004590



SolarEdge Technologies Ltd.  
SolarEdge Technologies GmbH/  
Werner-Eckert-Straße 6/81829 Munich/Germany



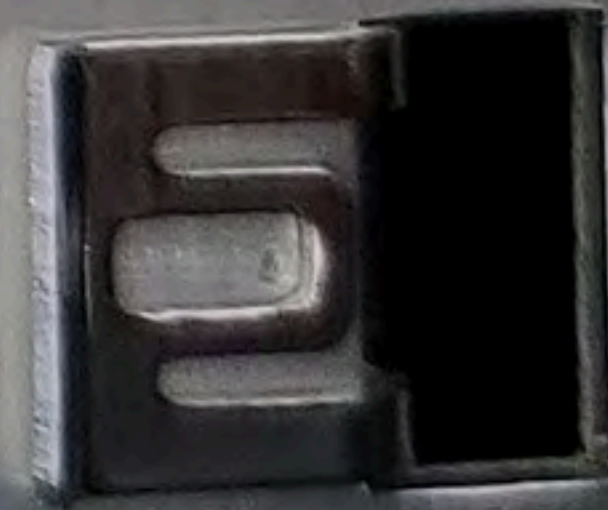
## CAUTION

HOT SURFACES-TO REDUCE THE RISK OF BURNS-DO NOT TOUCH. RISK OF ELECTRIC SHOCK-WHEN THE PHOTOVOLTAIC ARRAY IS EXPOSED TO LIGHT, IT SUPPLIES A DC VOLTAGE TO EQUIPMENT. COVER PV MODULE WITH OPAQUE MATERIAL BEFORE CONNECTING OR DISCONNECTING THIS OPTIMIZER. DURING FAULT, ZERO CURRENT IS SOURCED INTO DC ARRAY BY CONVERTER.

**WARNING** ELECTRIC SHOCK HAZARD. THE DC CONDUCTORS OF THIS PHOTOVOLTAIC SYSTEM ARE UNGROUNDED AND MAY BE ENERGIZED.

## AVERTISSEMENT

RISQUE DE CHOC ELECTRIQUE: QUAND LE CHAMP PHOTOVOLTAIQUE EST EXPOSE A LA LUMIERE, UNE TENSION CC EST FOURNIE A CET EQUIPEMENT. SURFACES CHAUDES: NE PAS TOUCHER, AFIN DE REDUIRE LES RISQUES DE BRULURES LE COURANT DE RETOUR INJECTE PAR LE CONVERTISSEUR EN CAS DE DEFAILLANCE DANS LE MODULE PV EST TOUJOURS NUL.





SolarEdge

IND02

440W/5-60V/15A

8-60V/14.5A

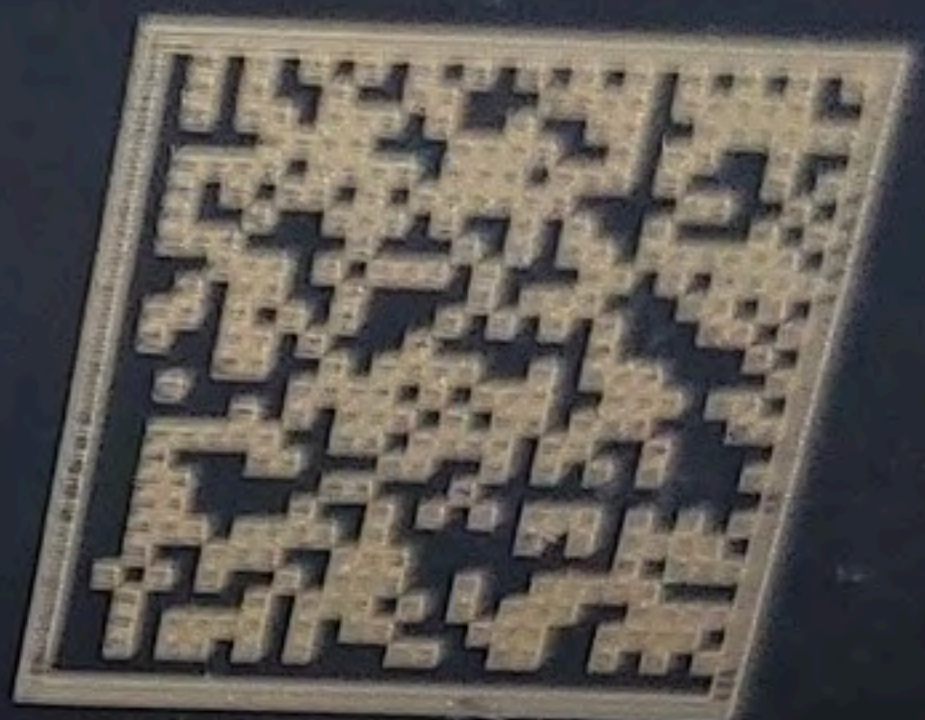
1V

NA02

SV3322A-015509C6D-6E

Vietnam

S440-1GM4MRM



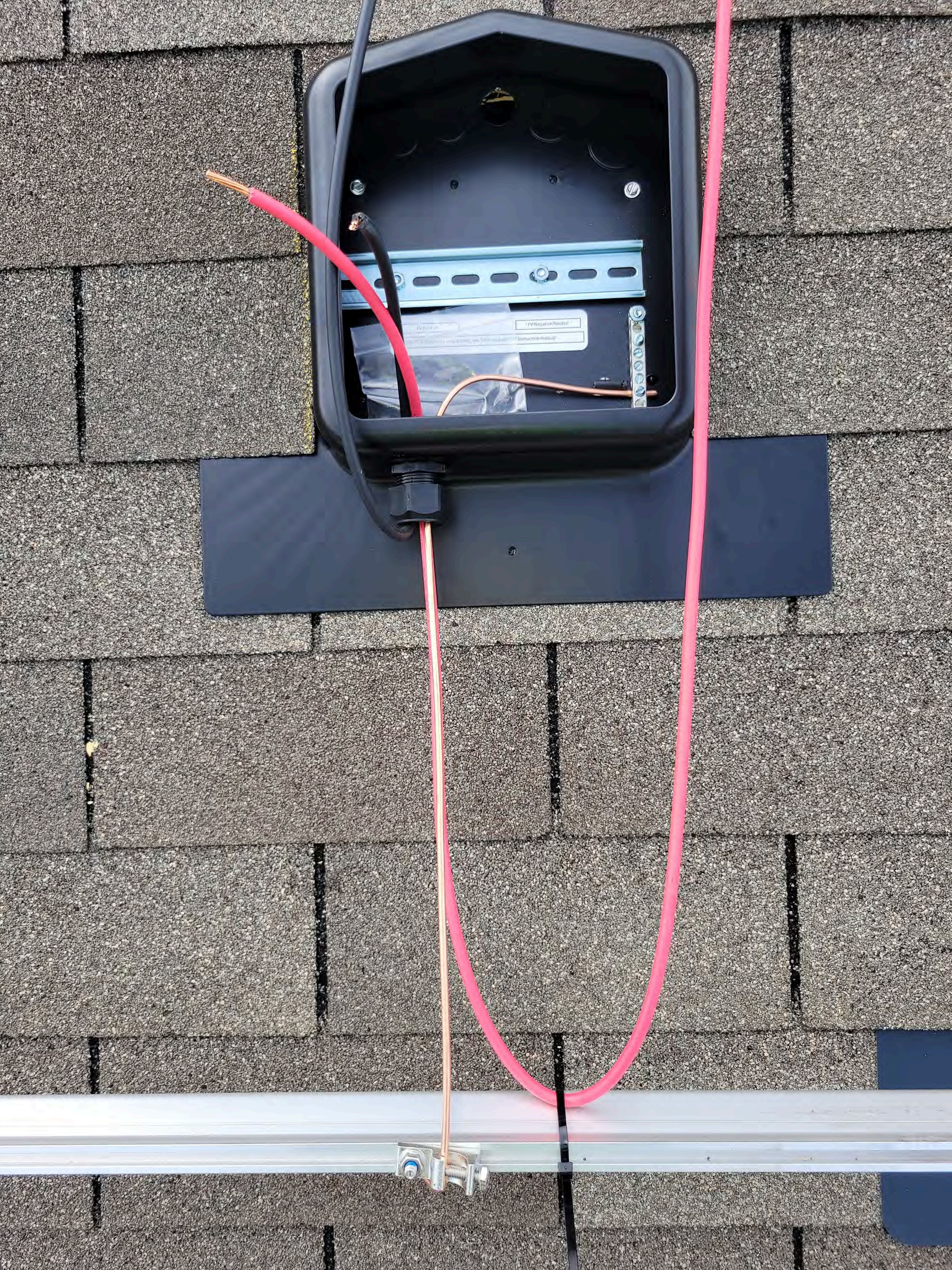




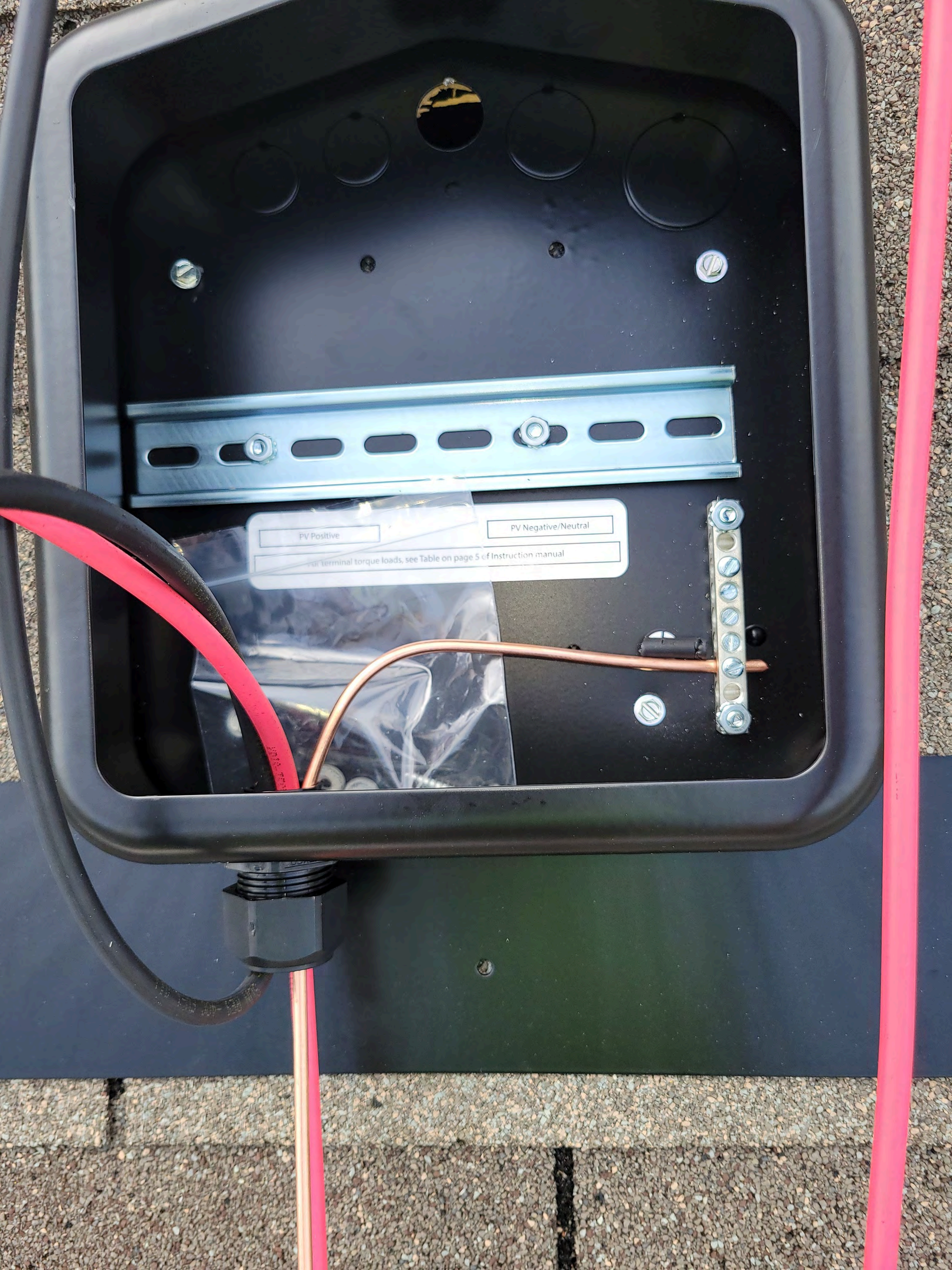












PV Positive

PV Negative/Neutral

For terminal torque loads, see Table on page 5 of Instruction manual





CAUTION  
WARNING  
FC









Erick Dula  
211 Chelsea St  
Austin TX 78701



CAUTION  
WARNING  
AVERTISSEMENT  
FC

Quick Mount  
Patent pending





Erick Dula  
211 Chelsea St  
Austin TX 78701



CAUTION  
WARNING  
AVERTISSEMENT  
FC

Quick Mount  
Patent Pending





For detailed wiring instructions, see the Service manual.  
For detailed wiring instructions, see the Service manual.

1000VDC  
1000VDC





PV Positive

PV Negative/Neutral

For terminal torque loads, see Table on page [blank] instruction manual

12AWG 105°C DRY 90°C WET 1500V 30M





WARNING: LIVE WIRE

WARNING: LIVE WIRE

OSB  
MADE IN  
USA





















0.500 IN  
THIS DIRECTION

10' x 10' SCHEDULE 40

PHOTO 50  
ZIP TIE

PHOTO 50

OSB MARKING

OSB MARKING

10' x 10' SCHEDULE 40

PHOTO 50

PHOTO 50

PHOTO 50

PHOTO 50

PHOTO 50

PHOTO 50

PHOTO 50

PHOTO 50

PHOTO 50

PHOTO 50

PHOTO 50

PHOTO 50

PHOTO 50

PHOTO 50

PHOTO 50

PHOTO 50

PHOTO 50

PHOTO 50

PHOTO 50

PHOTO 50

PHOTO 50

PHOTO 50

PHOTO 50

PHOTO 50

PHOTO 50

PHOTO 50

PHOTO 50

PHOTO 50

PHOTO 50

PHOTO 50

PHOTO 50

PHOTO 50

PHOTO 50

PHOTO 50

PHOTO 50

PHOTO 50

PHOTO 50

PHOTO 50

PHOTO 50

PHOTO 50

PHOTO 50

PHOTO 50

PHOTO 50

PHOTO 50

PHOTO 50

PHOTO 50

PHOTO 50

PHOTO 50

PHOTO 50

PHOTO 50

PHOTO 50

PHOTO 50

PHOTO 50

PHOTO 50

PHOTO 50

PHOTO 50

PHOTO 50

PHOTO 50

PHOTO 50

PHOTO 50

PHOTO 50

PHOTO 50

PHOTO 50

PHOTO 50

PHOTO 50

PHOTO 50

PHOTO 50

PHOTO 50

PHOTO 50

PHOTO 50

PHOTO 50

PHOTO 50

PHOTO 50

PHOTO 50

PHOTO 50

PHOTO 50

PHOTO 50

PHOTO 50

PHOTO 50

PHOTO 50

PHOTO 50

PHOTO 50

PHOTO 50

PHOTO 50

PHOTO 50

PHOTO 50

PHOTO 50

PHOTO 50

PHOTO 50

PHOTO 50

PHOTO 50

PHOTO 50

PHOTO 50

PHOTO 50

PHOTO 50

PHOTO 50

PHOTO 50

PHOTO 50

PHOTO 50

PHOTO 50

PHOTO 50

PHOTO 50

PHOTO 50

PHOTO 50

PHOTO 50

PHOTO 50

PHOTO 50

PHOTO 50

PHOTO 50

PHOTO 50

PHOTO 50

PHOTO 50

PHOTO 50

PHOTO 50

PHOTO 50

PHOTO 50

PHOTO 50

PHOTO 50

PHOTO 50

PHOTO 50

PHOTO 50

PHOTO 50

PHOTO 50

PHOTO 50

PHOTO 50

PHOTO 50

PHOTO 50

PHOTO 50

PHOTO 50

PHOTO 50

PHOTO 50

PHOTO 50

PHOTO 50

PHOTO 50

PHOTO 50

PHOTO 50

PHOTO 50

PHOTO 50

PHOTO 50

PHOTO 50

PHOTO 50

PHOTO 50

PHOTO 50

PHOTO 50

PHOTO 50

PHOTO 50

PHOTO 50

PHOTO 50

PHOTO 50

PHOTO 50

PHOTO 50

PHOTO 50

PHOTO 50

PHOTO 50

PHOTO 50

PHOTO 50

PHOTO 50

PHOTO 50

PHOTO 50

PHOTO 50

PHOTO 50

PHOTO 50

PHOTO 50

PHOTO 50

PHOTO 50

PHOTO 50

PHOTO 50

PHOTO 50

PHOTO 50

PHOTO 50

PHOTO 50

PHOTO 50

PHOTO 50

PHOTO 50

PHOTO 50

PHOTO 50

PHOTO 50

PHOTO 50

PHOTO 50

PHOTO 50

PHOTO 50

PHOTO 50

PHOTO 50

PHOTO 50

PHOTO 50

PHOTO 50

PHOTO 50

PHOTO 50

PHOTO 50

PHOTO 50

PHOTO 50

PHOTO 50

PHOTO 50

PHOTO 50

PHOTO 50

PHOTO 50

PHOTO 50

PHOTO 50

PHOTO 50

PHOTO 50

PHOTO 50

PHOTO 50

PHOTO 50

PHOTO 50

PHOTO 50

PHOTO 50

PHOTO 50

PHOTO 50

PHOTO 50

PHOTO 50

PHOTO 50

PHOTO 50

PHOTO 50

PHOTO 50

PHOTO 50

PHOTO 50

PHOTO 50

PHOTO 50

PHOTO 50

PHOTO 50

PHOTO 50

PHOTO 50

PHOTO 50

PHOTO 50

PHOTO 50

PHOTO 50

PHOTO 50

PHOTO 50

PHOTO 50

PHOTO 50

PHOTO 50

PHOTO 50

PHOTO 50

PHOTO 50

PHOTO 50

PHOTO 50

PHOTO 50

PHOTO 50

PHOTO 50

PHOTO 50

PHOTO 50

PHOTO 50

PHOTO 50

PHOTO 50

PHOTO 50

PHOTO 50

PHOTO 50

PHOTO 50

PHOTO 50

PHOTO 50

PHOTO 50

PHOTO 50

PHOTO 50

PHOTO 50

PHOTO 50

PHOTO 50

PHOTO 50

PHOTO 50

PHOTO 50

PHOTO 50

PHOTO 50

PHOTO 50

PHOTO 50

PHOTO 50

PHOTO 50

PHOTO 50

PHOTO 50

PHOTO 50

PHOTO 50

PHOTO 50

PHOTO 50

PHOTO 50

PHOTO 50

PHOTO 50

PHOTO 50

PHOTO 50

PHOTO 50

PHOTO 50

PHOTO 50

PHOTO 50

PHOTO 50

PHOTO 50

PHOTO 50

PHOTO 50

PHOTO 50

PHOTO 50

PHOTO 50

PHOTO 50

PHOTO 50

PHOTO 50

PHOTO 50

PHOTO 50

PHOTO 50

PHOTO 50

PHOTO 50

PHOTO 50

PHOTO 50

PHOTO 50

PHOTO 50

PHOTO 50

PHOTO 50

PHOTO 50

PHOTO 50

PHOTO 50

PHOTO 50

PHOTO 50

PHOTO 50

PHOTO 50

PHOTO 50

PHOTO 50

PHOTO 50

PHOTO 50

PHOTO 50

PHOTO 50

PHOTO 50

PHOTO 50

PHOTO 50

PHOTO 50

PHOTO 50

PHOTO 50

PHOTO 50





DANGER  
VOLTAIC  
SOURCE

DANGER  
VOLTAIC  
SOURCE

OSB  
1 1/8" x 48" x 96"  
1300

OSB  
1 1/8" x 48" x 96"  
1300

OSB  
1 1/8" x 48" x 96"  
1300

OSB  
1 1/8" x 48" x 96"  
1300

OSB  
1 1/8" x 48" x 96"  
1300

OSB  
1 1/8" x 48" x 96"  
1300

OSB  
1 1/8" x 48" x 96"  
1300

OSB  
1 1/8" x 48" x 96"  
1300

OSB  
1 1/8" x 48" x 96"  
1300

OSB  
1 1/8" x 48" x 96"  
1300

OSB  
1 1/8" x 48" x 96"  
1300

OSB  
1 1/8" x 48" x 96"  
1300

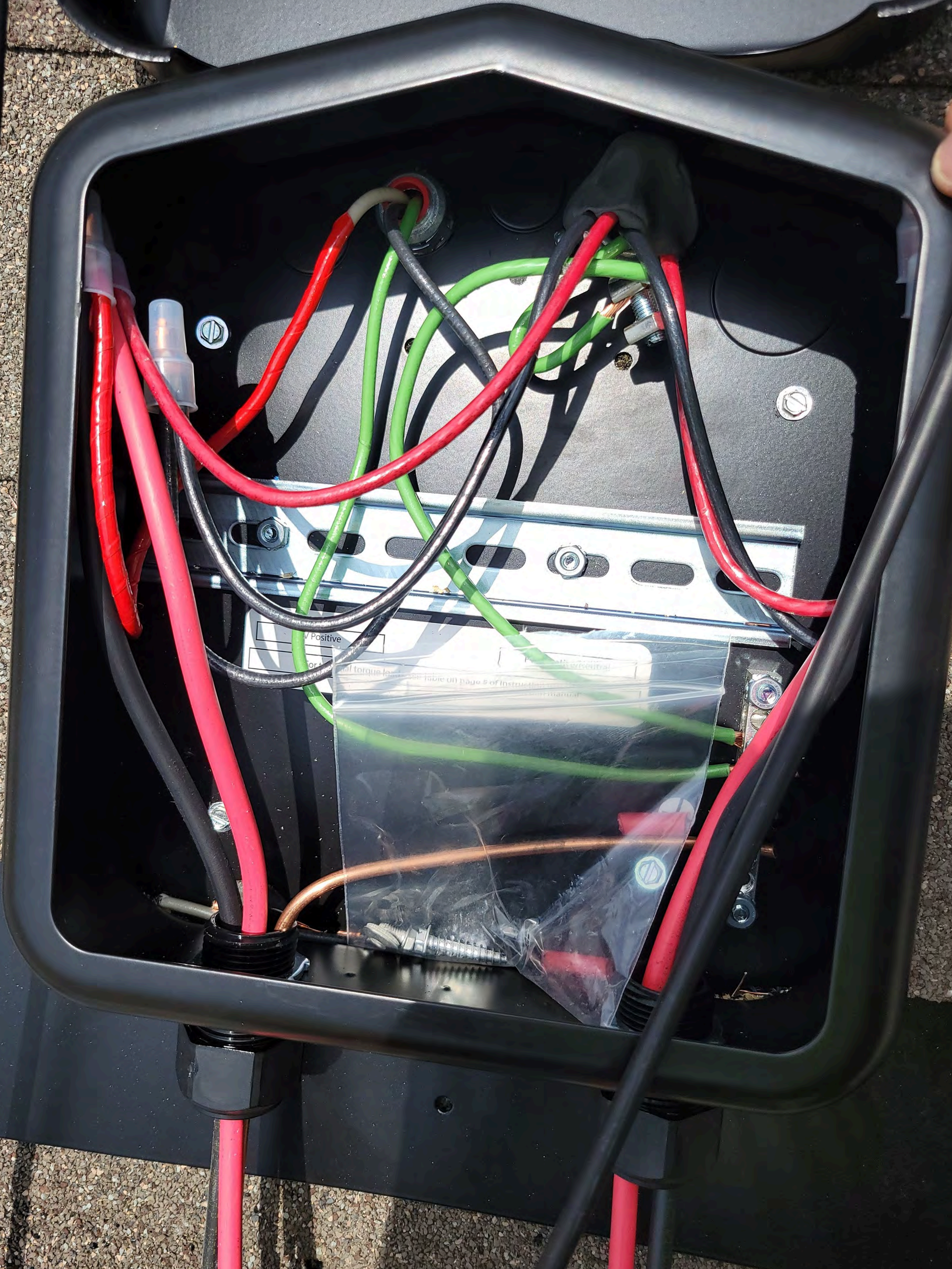
OSB  
1 1/8" x 48" x 96"  
1300

OSB  
1 1/8" x 48" x 96"  
1300

OSB  
1 1/8" x 48" x 96"  
1300

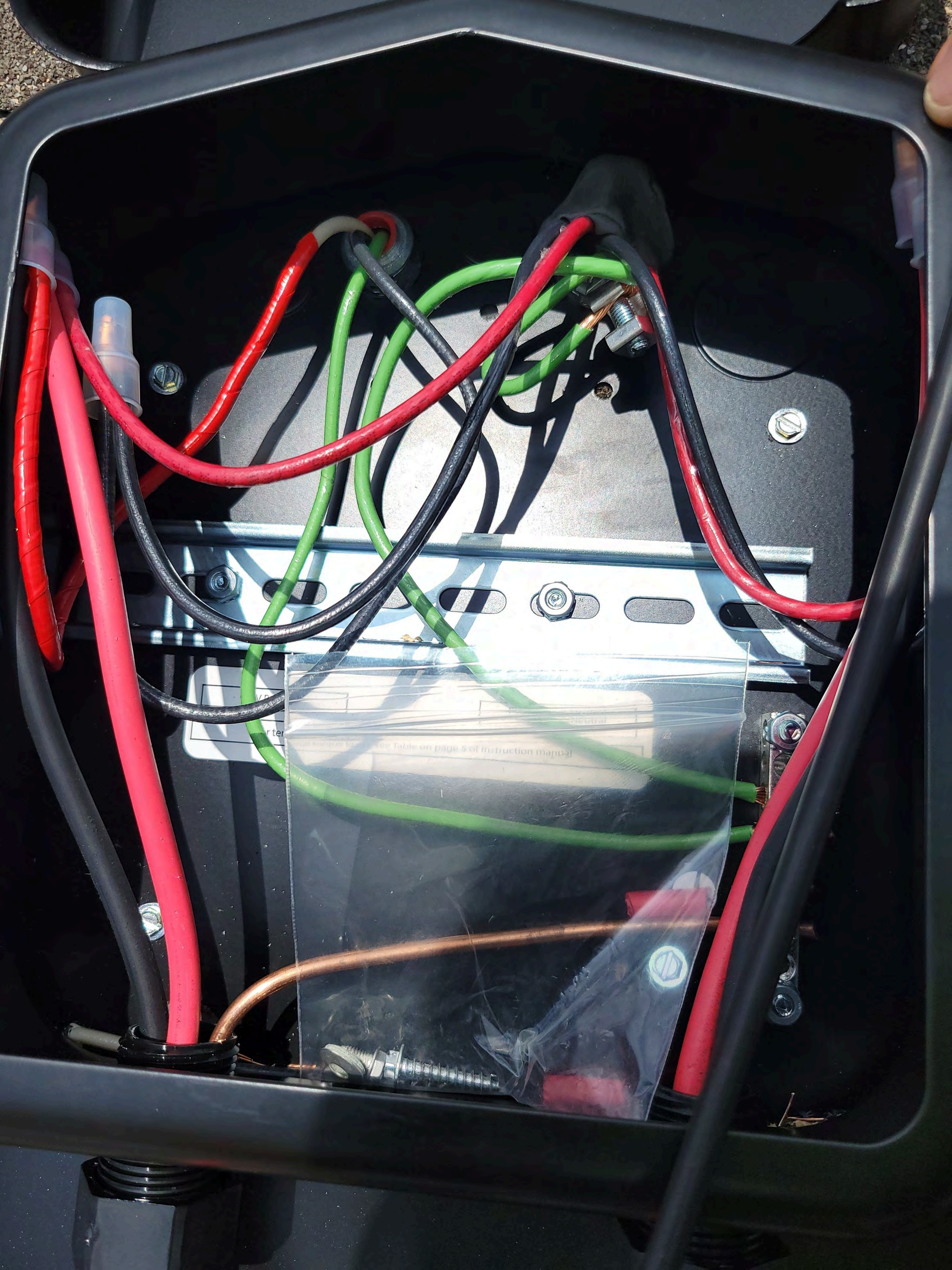
OSB  
1 1/8" x 48" x 96"  
1300





W Positive  
for  
of torque less than table on page 5 of instruction manual







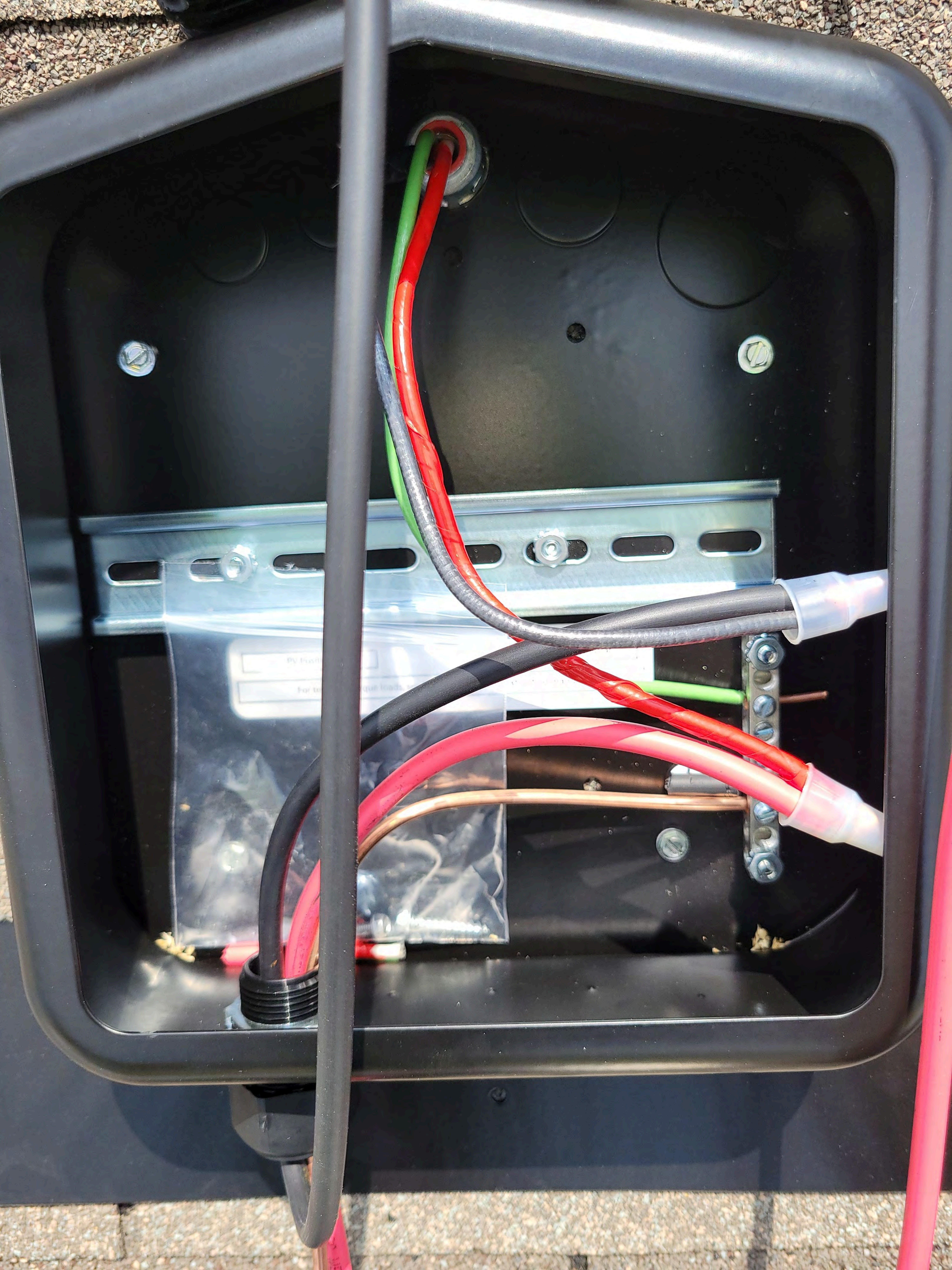


Erick Davila  
211 Chedworth Dr.  
Angier, NC 27501



Erick Davila  
211 Chedworth Dr.  
Angier, NC 27501







# SOLAR DECK

www.terprises.com

Photovoltaic Combiner/Enclosure conforms to UL 1741; Certified to CSA C22.2 No. 290; Nema Type 3R

Q1  Q2  Q3  21  22  23  24  
 0799 Series  0766-41AD

Max Ratings: 600 VDC/115 AMPS; 240 VAC/10 AMPS, Short circuit 10KA, Ambient Temp 75C°



## ⚠️ WARNING

HIGH VOLTAGE, KEEP OUT!  
RISK OF ELECTRICAL SHOCK. ONLY TRAINED  
PERSONNEL ALLOWED ACCESS. SUITABLE FOR  
PHOTOVOLTAIC USE. APPROVED FOR  
FIELD-INSTALLED CONDUCTORS SIZE  
ALLOWABLE AMPACITY OF 90 C°. AN EXTENDED  
CIRCUIT DISCONNECTING MEANS SHALL BE PROVIDED,  
WHEN REQUIRED BY THE CANADIAN ELECTRICAL  
CODE, PART I.  
CAUTION: BEFORE SERVICING FUSES, DISCONNECT  
PHOTOVOLTAIC INPUTS AND OUTPUTS.  
WARNING: MORE THAN ONE LIVE CIRCUIT MAY BE  
PRESENT. PLEASE CONSULT PAGE 5 OF MANUAL FOR  
COMPONENT AND KIT RATINGS.

## ⚠️ AVERTISSEMENT

HAUTE TENSION, GARDEZ À L'ÉCART! RISQUE DE CHOC  
ÉLECTRIQUE. SEUL LE PERSONNEL DE SERVICE FORMÉ A  
AUTORISÉ L'ACCÈS. CONVIENT À UNE UTILISATION  
PHOTOVOLTAÏQUE. APPROUVÉ POUR UTILISATION AVEC  
DES CONDUCTEURS INSTALLÉS SUR LE TERRAIN  
DIMENSIONNÉS POUR UNE AMPACITÉ ADMISSIBLE DE  
90 C°. UN MOYEN DE DÉCONNEXION DU CIRCUIT DE  
SORTIE EXTERNE DOIT ÊTRE FOURNI LORSQUE LA PARTIE I  
DU CODE CANADIEN DE L'ÉLECTRICITÉ L'EXIGE.  
ATTENTION : AVANT D'ENTREtenir LES FUSIBLES,  
DÉBRANCHEZ TOUTES LES ENTRÉES ET CIRCUITS DE  
SORTIE PHOTOVOLTAÏQUES.  
AVERTISSEMENT : PLUS D'UN CIRCUIT EN DIRECT. VOIR  
LE DIAGRAMME.  
VEUILLEZ CONSULTER LA PAGE 5 DU MANUEL POUR LES  
ÉVALUATIONS DES COMPOSANTS ET DES KITS DE  
COMBINAISON.

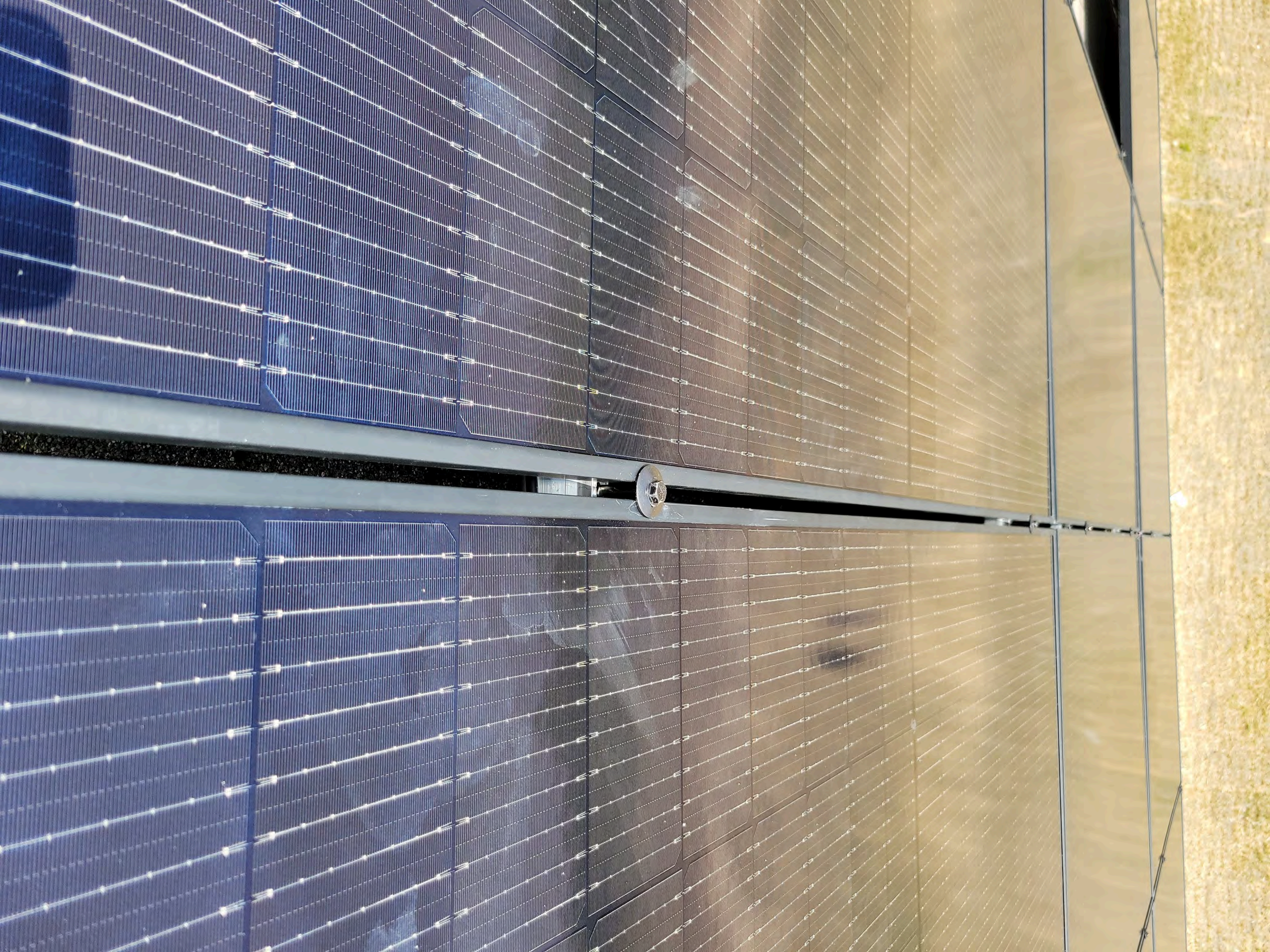
R.S.I.C. Enterprises  
Patent No. US 7,626,118 B1



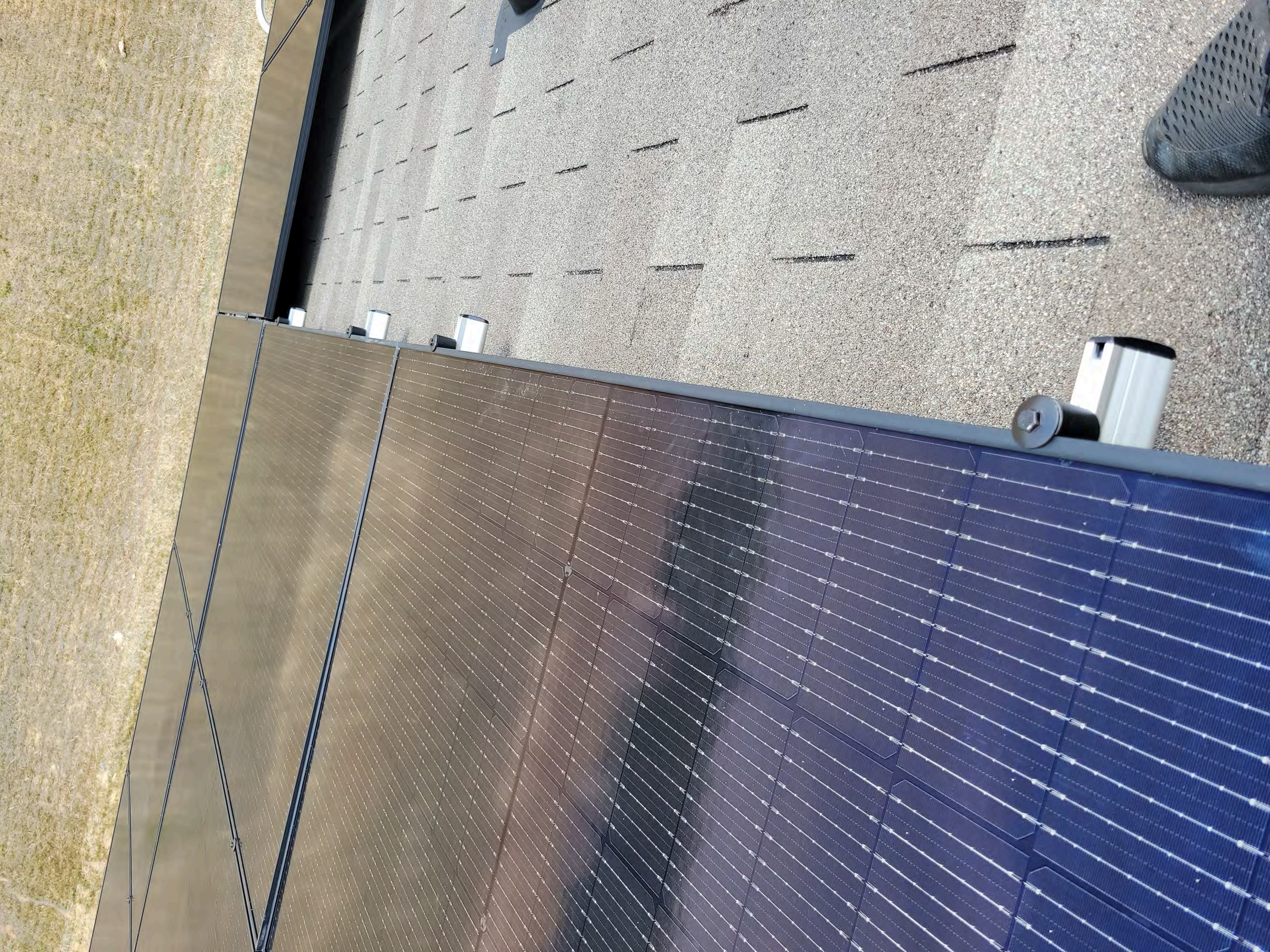


Do not place heavy items  
under load  
Do not use 90°C WET OR DRY 1000 OR 2000

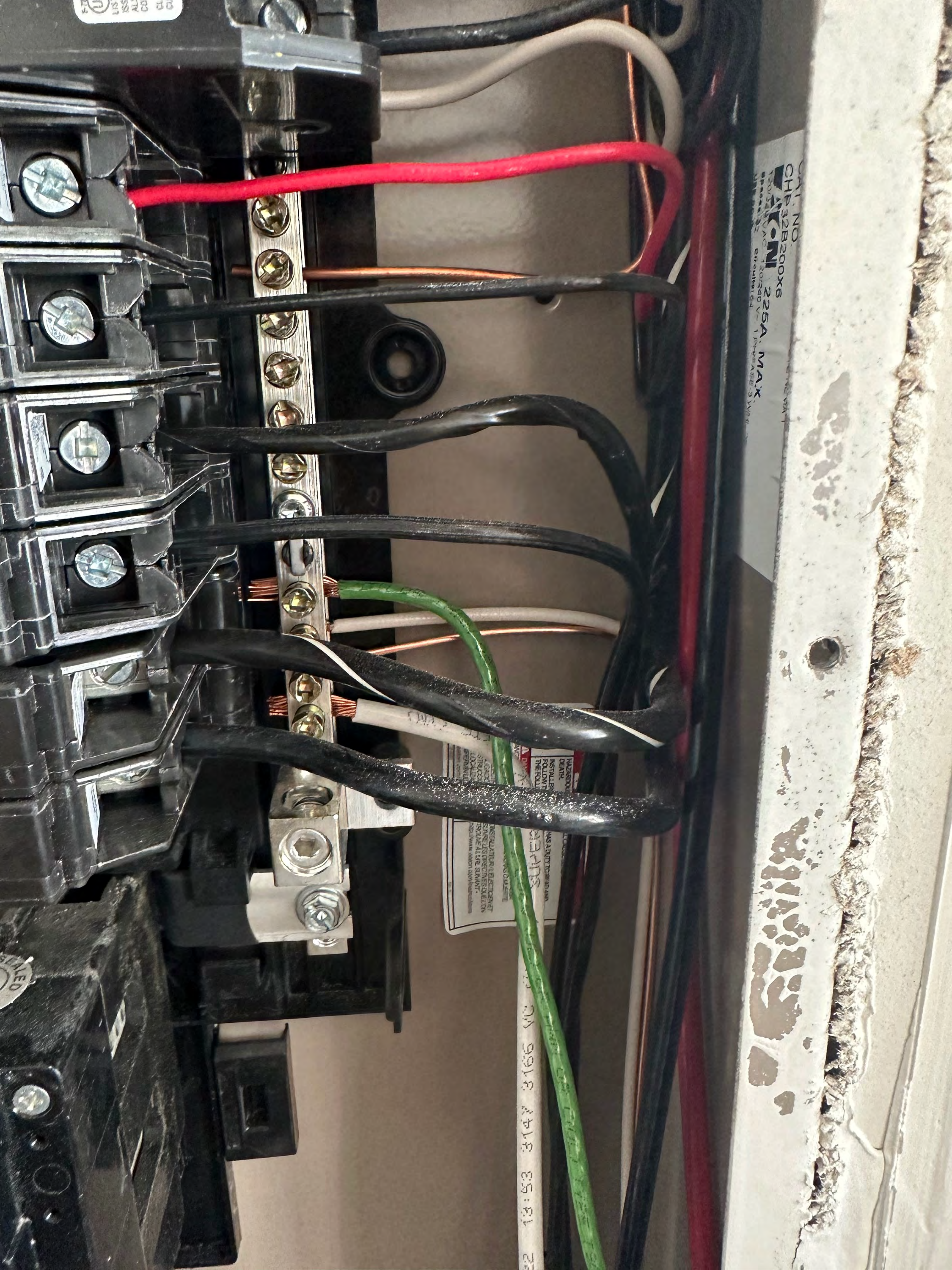












CUTTING  
CHP32B200X6  
225A MAX  
1 pole, 200V  
1 pole, 200V

INSTALLER  
FOLLOW THE  
DIRECTION  
OF THE  
ARROW  
TO  
INSTALL  
THE  
CABLE  
CORRECTLY  
DO NOT  
USE  
EXCESSIVE  
FORCE  
TO  
INSERT  
THE  
CABLE  
IF  
IT  
DOES  
NOT  
FIT  
EASILY  
STOP  
AND  
RECHECK  
THE  
CABLE  
DIRECTION  
AND  
ALIGNMENT  
BEFORE  
ALTERING  
THE  
INSTALLATION

22 13:53 3147 3166 NO 9918 3418 35:31

WED



PHOTOVOLTAIC SYSTEM  
AC DISCONNECT

 **WARNING** 

DUAL POWER SUPPLY

SOURCES: UTILITY GRID AND PV SOLAR ELECTRIC SYSTEM

**ELECTRIC SHOCK HAZARD**

DO NOT TOUCH TERMINALS  
TERMINALS ON BOTH THE LINE AND LOAD SIDES  
MAY BE ENERGIZED IN THE OPEN POSITION.



**DANGER**

PEUT CAUSER DES BLESSURES

l'interrupteur lorsque

de mettre l'interrupteur hors

dispositif de détecteur de la

à partir d'un bouton d'un

interrupteur est hors circuit (S.F.)

avant en avant de l'interrupteur

verifier Remplacer les pièces

article avant de remettre sous tension.

E-6239-0



ENCLOSED SWITCH

INTERRUPTOR EN CABINETE

INTERRUPTOR SOUS COFFRET

ISSUE NO. AL-72

NOM-367-AMC

como Equipo de Acometida cuando se instala el kit  
DIN. Si el Kit de Neutros instalado el voltaje que  
siempre 120/240 V - 3 fases con neutro aislado  
usarse en circuito capaz de entregar no más de 100 000  
VA con 240 V - máxima cuando sea protegido por  
T, R o J clasificados a 80 A máximo. Adecuado para  
cualquier capacidad de entregar no más de 10 000 A RCM  
con 240 V - máxima, cuando sea protegido por cualquier  
tipo protector de sobrecorriente clasificado a 60 A máxima.  
cabeza hexagonal / 3,97 mm /  
16 - 1/16 AWG, 2,1 a 5,3 mm<sup>2</sup> AL - CU

la sección transversal del conductor  
16 - 1/16 AWG, 2,1 a 5,3 mm<sup>2</sup> AL - CU

pour une utilisation comme équipement de service lorsque le kit  
DIN est installé. Si le kit neutre est utilisé, les puissances  
suivantes sont également applicables: 120/240 V - 3 pha  
100 000 VA avec 240 V - maximum lorsque protégé par des fusibles  
T, R ou J classifiés à 80 A maximum. Convient pour un  
circuit capable de fournir au maximum 10 000 A RCM  
avec 240 V - maximum, lorsque protégé par tout autre dispositif de protection contre  
le surcour classifié à 60 A maximum.  
à tête hexagonale / 3,97 mm / 16 - 1/16 AWG, 2,1 à 5,3 mm<sup>2</sup> AL - CU

PUB5725

MEG APPROVED  
UTRS213CE  
Type 3R Enclosure  
3-4773-2

LINE

LOAD

VL  
3M  
COVER

E491006  
COVER







**EATON**<sup>®</sup>

General Duty Safety Switch  
Interrupteur de sécurité à usage général  
Interruptor de seguridad de servicio general

60 A, 240 V~, 60 Hz

Complete ratings inside  
Valeurs nominales complètes à l'intérieur  
Información completa de capacidades en el interior

Further instructions inside  
Autres instructions à l'intérieur  
Instrucciones adicionales en el interior

Made in U.S.A. / Fabriqué aux É.-U. / Hecho en E.U.A.

**⚠ DANGER**  
**HAZARDOUS VOLTAGE. WILL CAUSE SEVERE INJURY OR DEATH.**  
• Never operate switch with cover open.  
• Turn OFF power ahead of switch before doing any work inside. Replace all parts. Close cover before turning power ON.

**⚠ TENSION DANGEREUSE. PEUT CAUSER DES BLESSURES GRAVES OU LA MORT.**  
• Ne jamais manœuvrer l'interrupteur lorsque le couvercle est ouvert.  
• Couper l'alimentation en amont de l'interrupteur avant toute intervention. Remplacer les pièces. Fermer le couvercle avant de remettre sous tension.

**⚠ PELIGRO**  
**VOLTAJE PELIGROSO. PUEDE CAUSAR HERIDAS SEVERAS O LA MUERTE.**  
• Nunca opere el interruptor con la cubierta abierta.  
• Desconectar la alimentación del interruptor antes de trabajar dentro del mismo. Reemplazar todas las partes. Cerrar la cubierta antes de energizar el interruptor.

30-43080



**PHOTOVOLTAIC SYSTEM  
AC DISCONNECT**

**⚠ WARNING ⚠  
DUAL POWER SUPPLY**

SOURCES: UTILITY GRID AND PV SOLAR ELECTRIC SYSTEM

**ELECTRIC SHOCK HAZARD**

DO NOT TOUCH TERMINALS  
TERMINALS ON BOTH THE LINE AND LOAD SIDES  
MAY BE ENERGIZED IN THE OPEN POSITION.

OPERATING VOLTAGE **240** VOLTS  
OPERATING CURRENT **32** AMPS

pvtlabels.com

03-116

ON

OFF

MEG APPROVED  
UTRS213CE

EATON

UL LISTED  
5PK6  
YL  
3/4"  
COVER



MCP-E



M3





**EATON**<sup>®</sup>

General Duty Safety Switch  
Interrupteur de sécurité à usage général  
Interruptor de seguridad de servicio general

60 A, 240 V~, 60 Hz

Complete ratings inside  
Valeurs nominales complètes à l'intérieur  
Información completa de capacidades en el interior

Further instructions inside  
Autres instructions à l'intérieur  
Instrucciones adicionales en el interior

Made in U.S.A. / Fabriqué aux É.-U. / Hecho en E.U.A.

**⚠ DANGER**  
**HAZARDOUS VOLTAGE. WILL CAUSE SEVERE INJURY OR DEATH.**  
• Never operate switch with cover open.  
• Turn OFF power ahead of switch before doing any work inside. Replace all parts. Close cover before turning power ON.

**⚠ TENSION DANGEREUSE. PEUT CAUSER DES BLESSURES GRAVES OU LA MORT.**  
• Ne jamais manœuvrer l'interrupteur lorsque le couvercle est ouvert.  
• Couper l'alimentation en amont de l'interrupteur avant toute intervention. Remplacer les pièces. Fermer le couvercle avant de remettre sous tension.

**⚠ PELIGRO**  
**VOLTAJE PELIGROSO. PUEDE CAUSAR HERIDAS SEVERAS O LA MUERTE.**  
• Nunca opere el interruptor con la cubierta abierta.  
• Desconectar la alimentación del interruptor antes de trabajar dentro del mismo. Reemplazar todas las partes. Cerrar la cubierta antes de energizar el interruptor.

30-43080



**PHOTOVOLTAIC SYSTEM  
AC DISCONNECT**

**⚠ WARNING ⚠  
DUAL POWER SUPPLY**

SOURCES: UTILITY GRID AND PV SOLAR ELECTRIC SYSTEM

**ELECTRIC SHOCK HAZARD**

DO NOT TOUCH TERMINALS  
TERMINALS ON BOTH THE LINE AND LOAD SIDES  
MAY BE ENERGIZED IN THE OPEN POSITION.

OPERATING VOLTAGE **240** VOLTS  
OPERATING CURRENT **32** AMPS

pvtlabels.com

03-116

ON

OFF

MEG APPROVED  
UTRS213CE

EATON

UL LISTED  
EPK6  
YL  
3/4"  
COVER