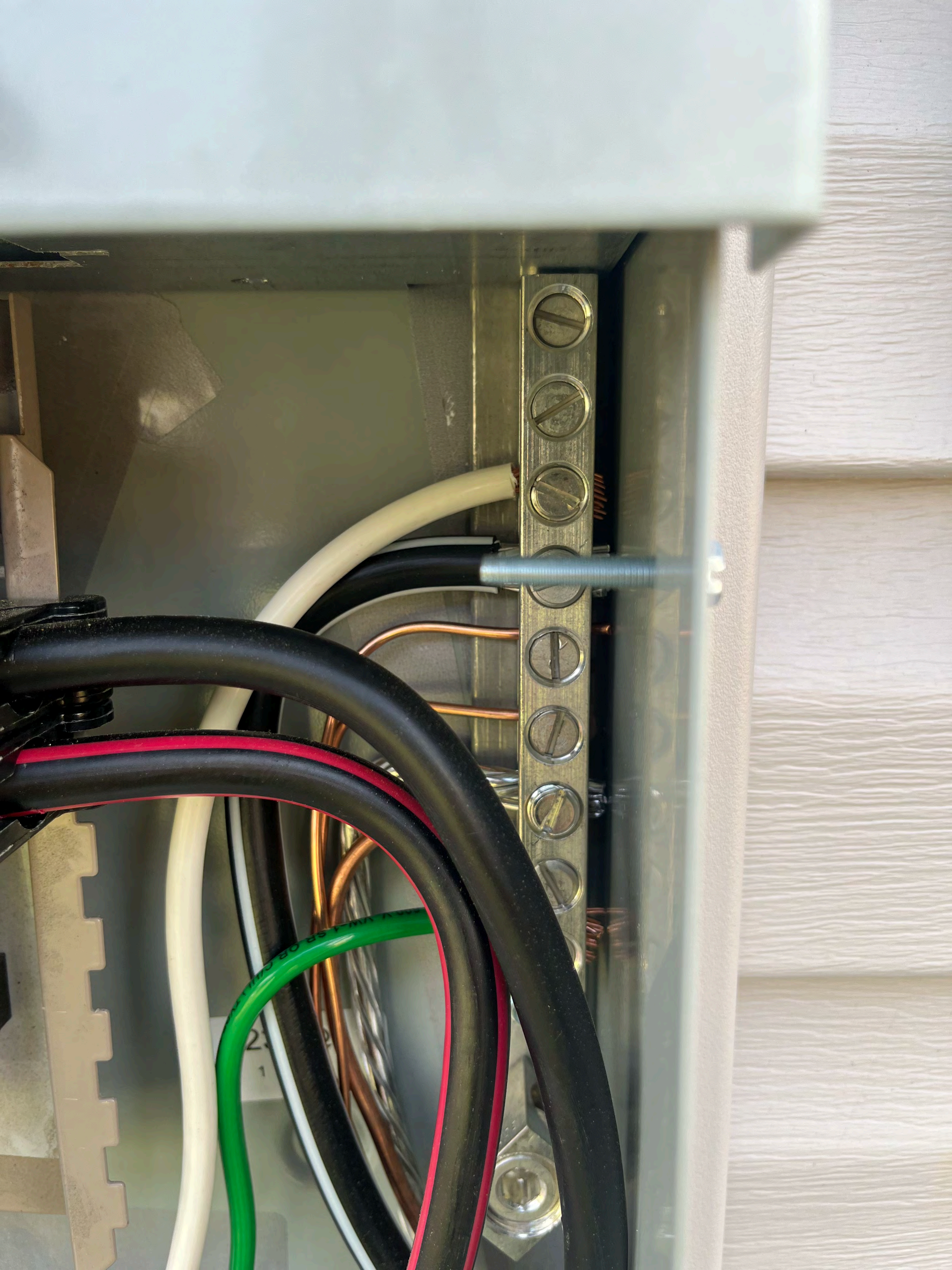


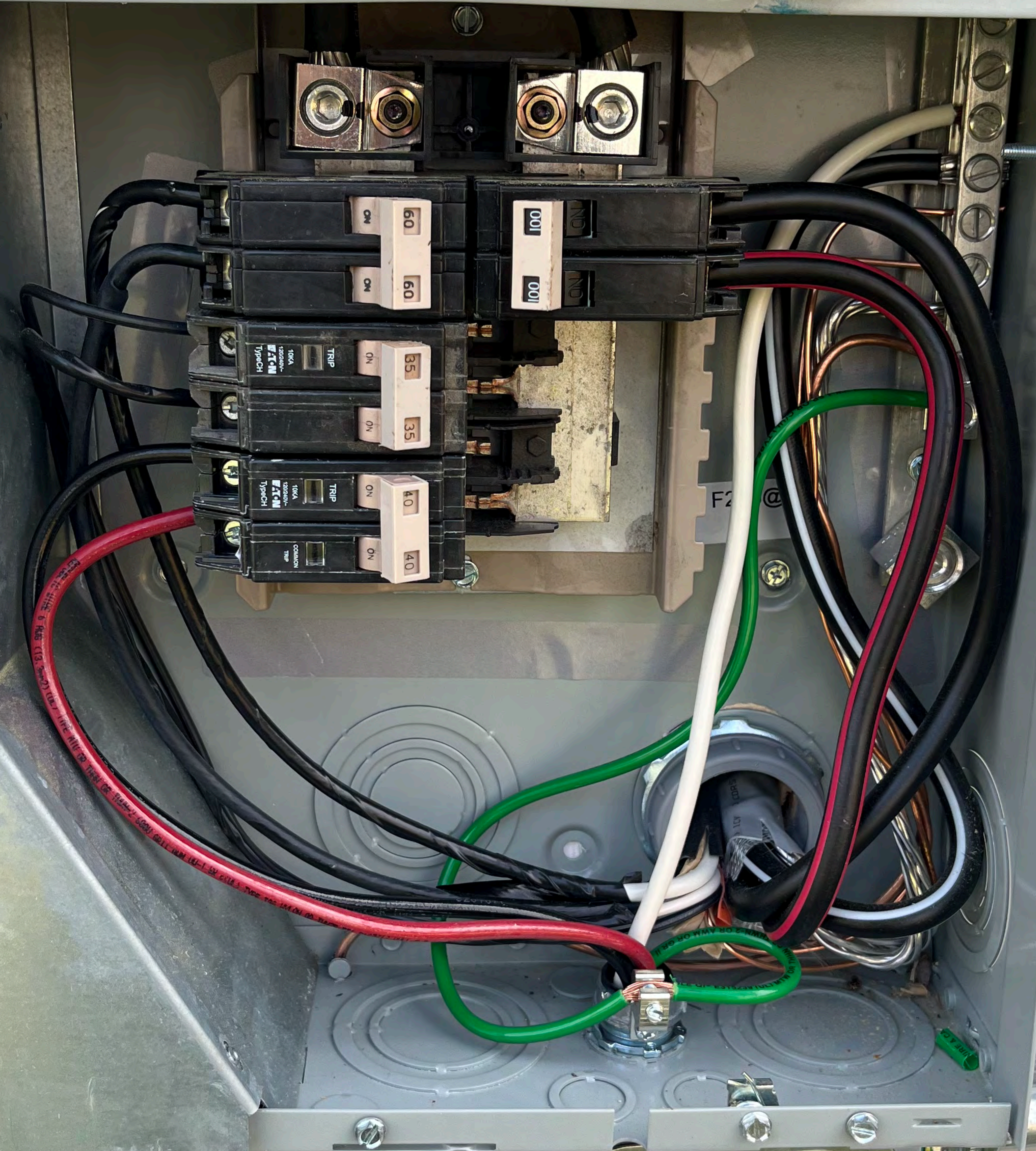




WARNING: PHOTOVOLTAIC
POWER SOURCE





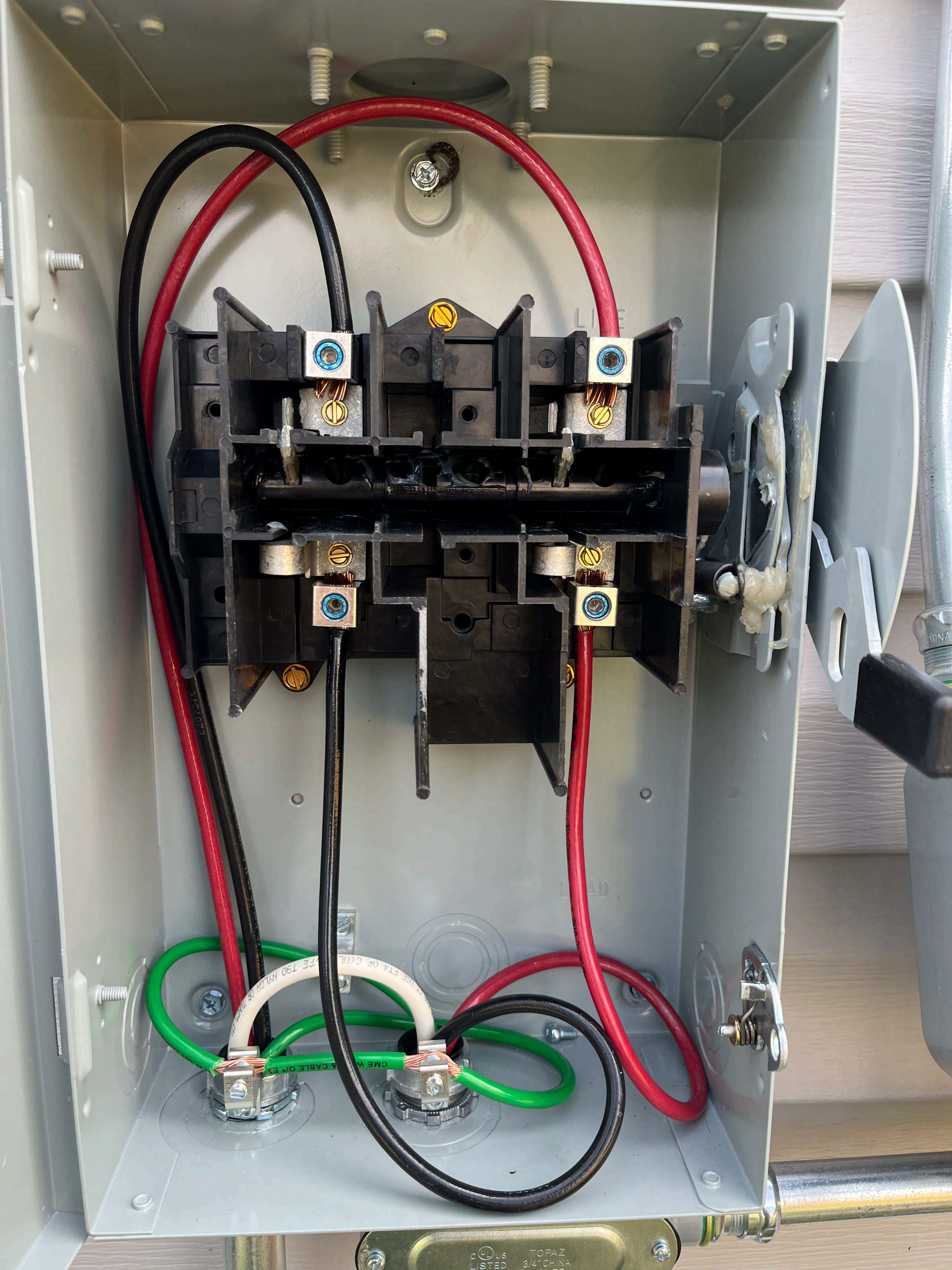


ELETRICO RIGIDO DEL PVC









c US LISTED TOPAZ 3/4" CHINA





Quick Mount PV
Patente primario



SolareEdge | IndOp

DC Output: 440W/5-60V/15A

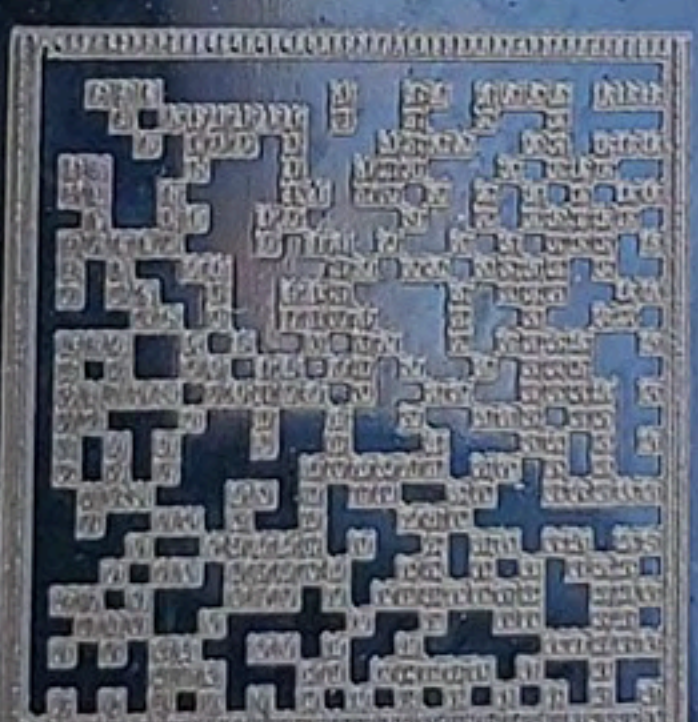
DC Input: 8-60V/14.5A

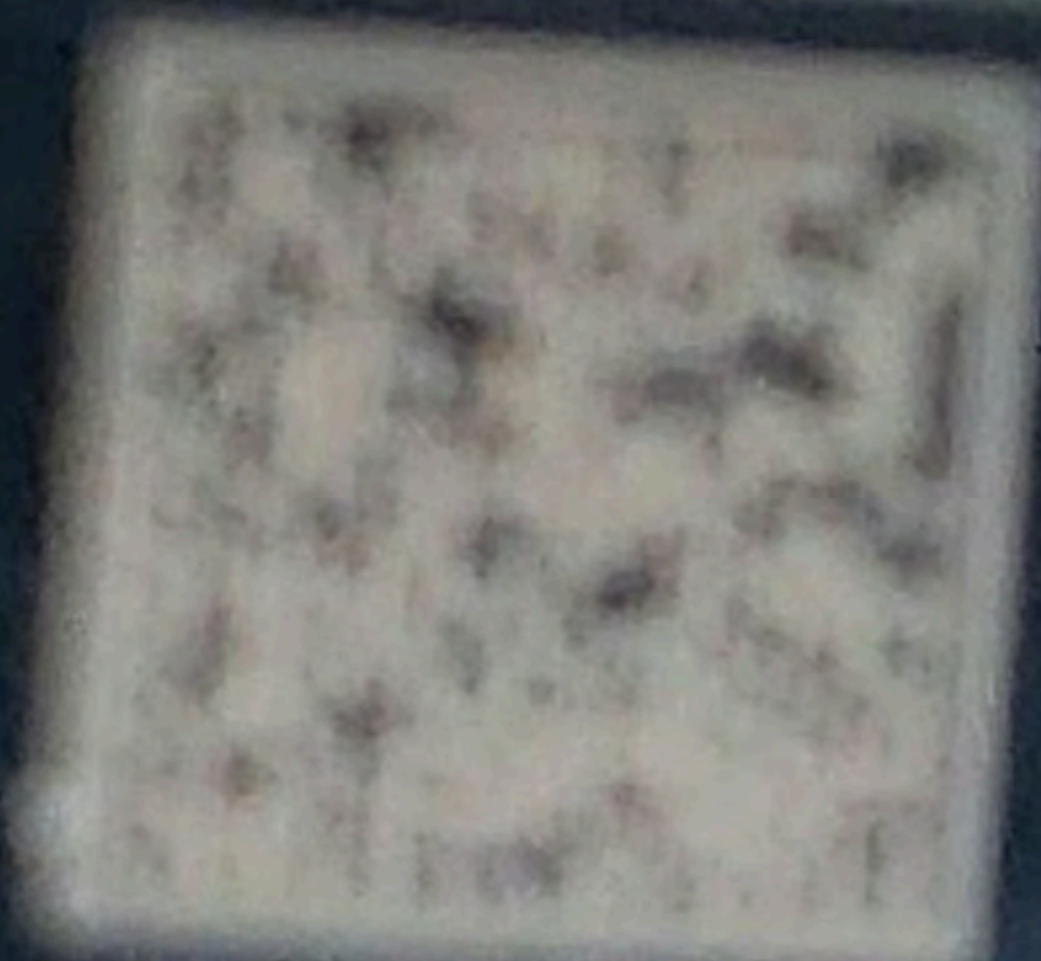
Open Circuit Voltage: 1V

NA02 SV3222A-0154E880C-F7

Vietnam S440-1GM4MRM

MADE IN:





MADE IN CHINA
MODEL: W1000-01
SERIAL: W1000-01
W1000-01
W1000-01

W1000-01

0154E880C-F7



Do Not Remove

154E880C-F7



Intertek
4004590



SolarEdge Technologies Ltd.
SolarEdge Technologies GmbH/
Werner-Eckert-Straße 6/81829 Munich/Germany



CAUTION

HOT SURFACES-TO REDUCE THE RISK OF BURNS-DO NOT TOUCH. RISK OF ELECTRIC SHOCK-WHEN THE PHOTOVOLTAIC ARRAY IS EXPOSED TO LIGHT, IT SUPPLIES A DC VOLTAGE TO EQUIPMENT. COVER PV MODULE WITH OPAQUE MATERIAL BEFORE CONNECTING OR DISCONNECTING THIS OPTIMIZER. DURING FAULT, ZERO CURRENT IS SOURCED INTO DC ARRAY BY CONVERTER.

WARNING

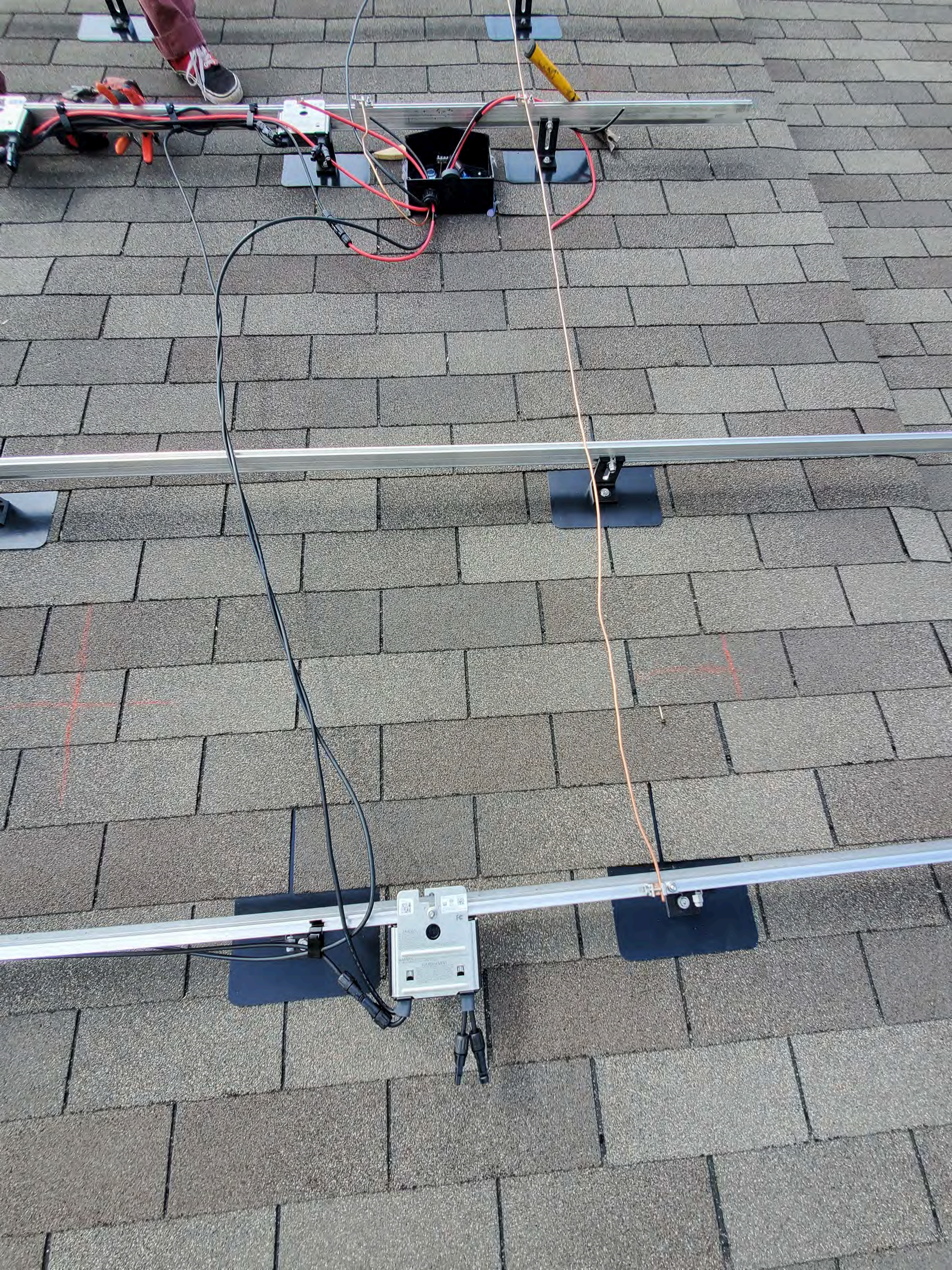
ELECTRIC SHOCK HAZARD. THE DC CONDUCTORS OF THIS PHOTOVOLTAIC SYSTEM ARE UNGROUNDED AND MAY BE ENERGIZED.

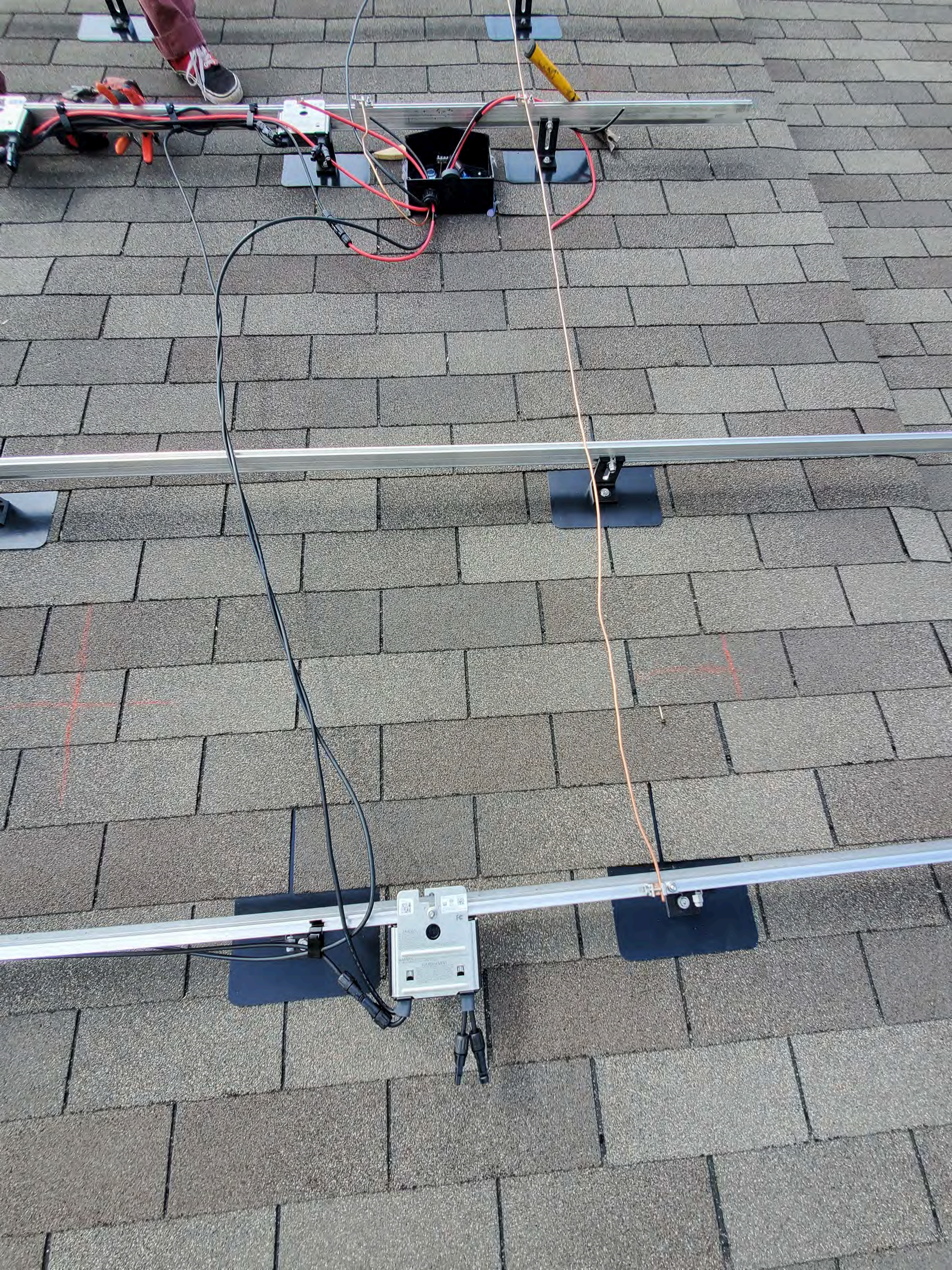
AVERTISSEMENT

RISQUE DE CHOC ELECTRIQUE: QUAND LE CHAMP PHOTOVOLTAIQUE EST EXPOSE A LA LUMIERE, UNE TENSION CC EST FOURNIE A CET EQUIPEMENT. SURFACES CHAUDES: NE PAS TOUCHER, AFIN DE REDUIRE LES RISQUES DE BRULURES LE COURANT DE RETOUR INJECTE PAR LE CONVERTISSEUR EN CAS DE DEFAILLANCE DANS LE MODULE PV EST TOUJOURS NUL.



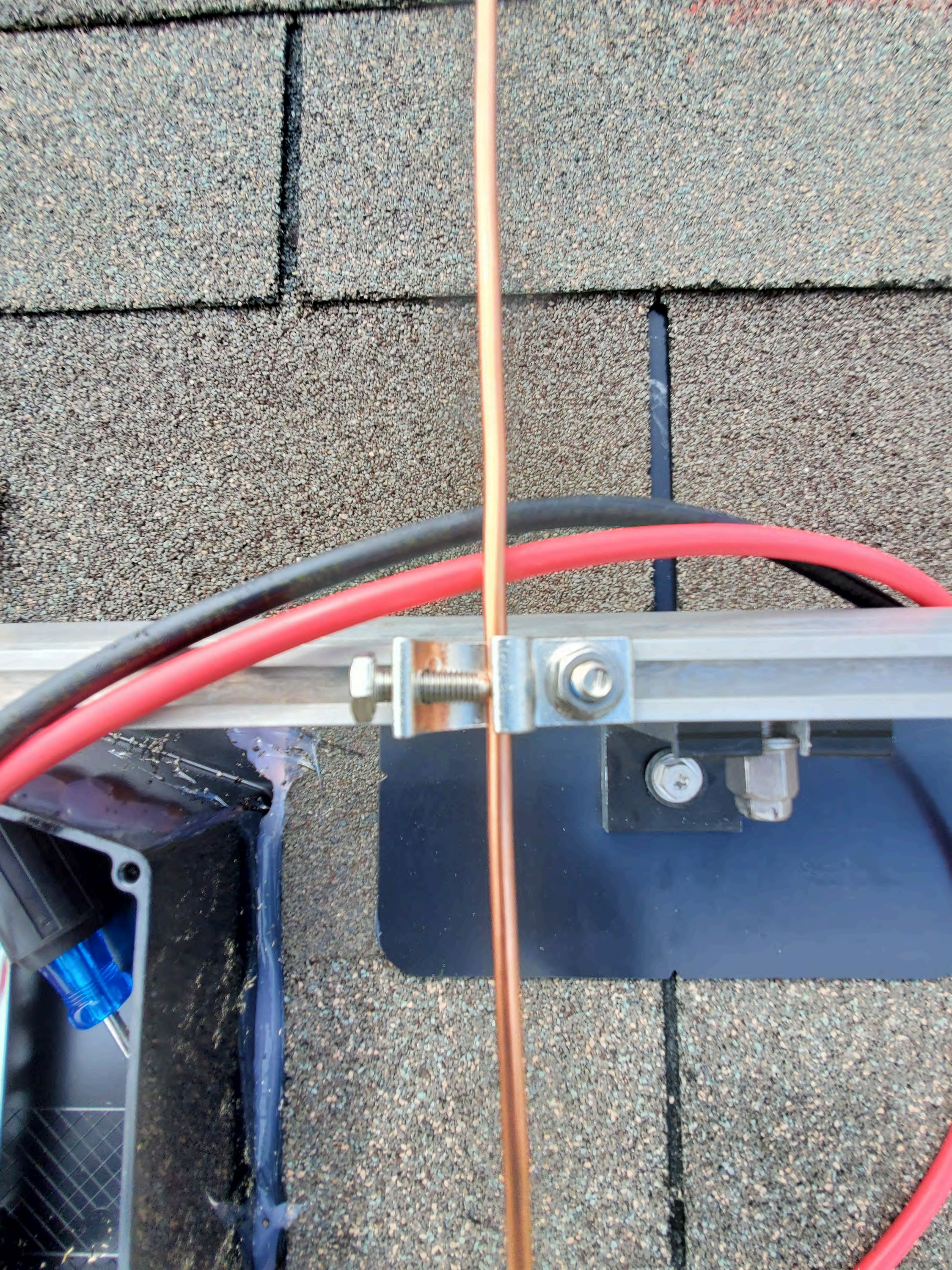


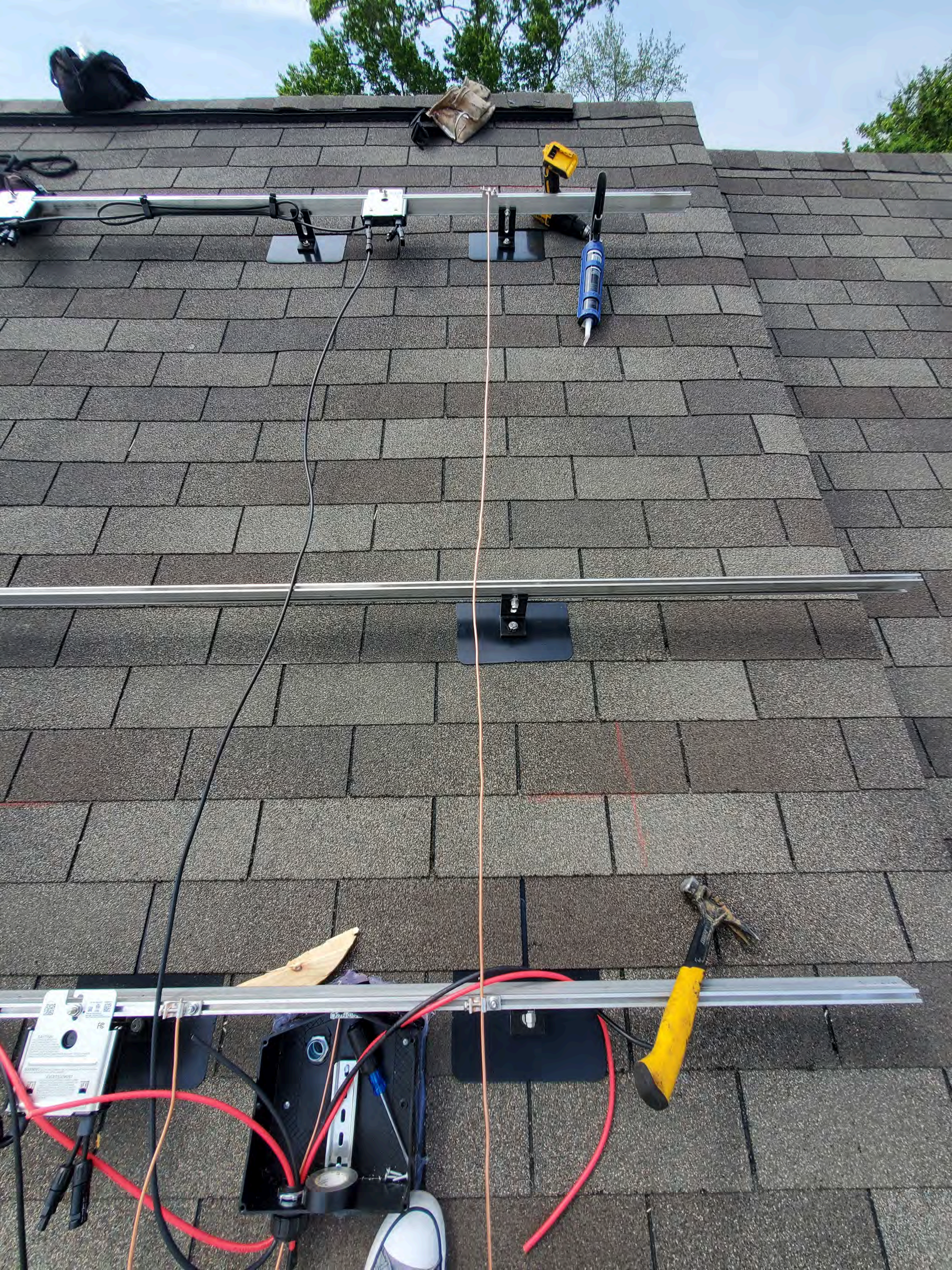


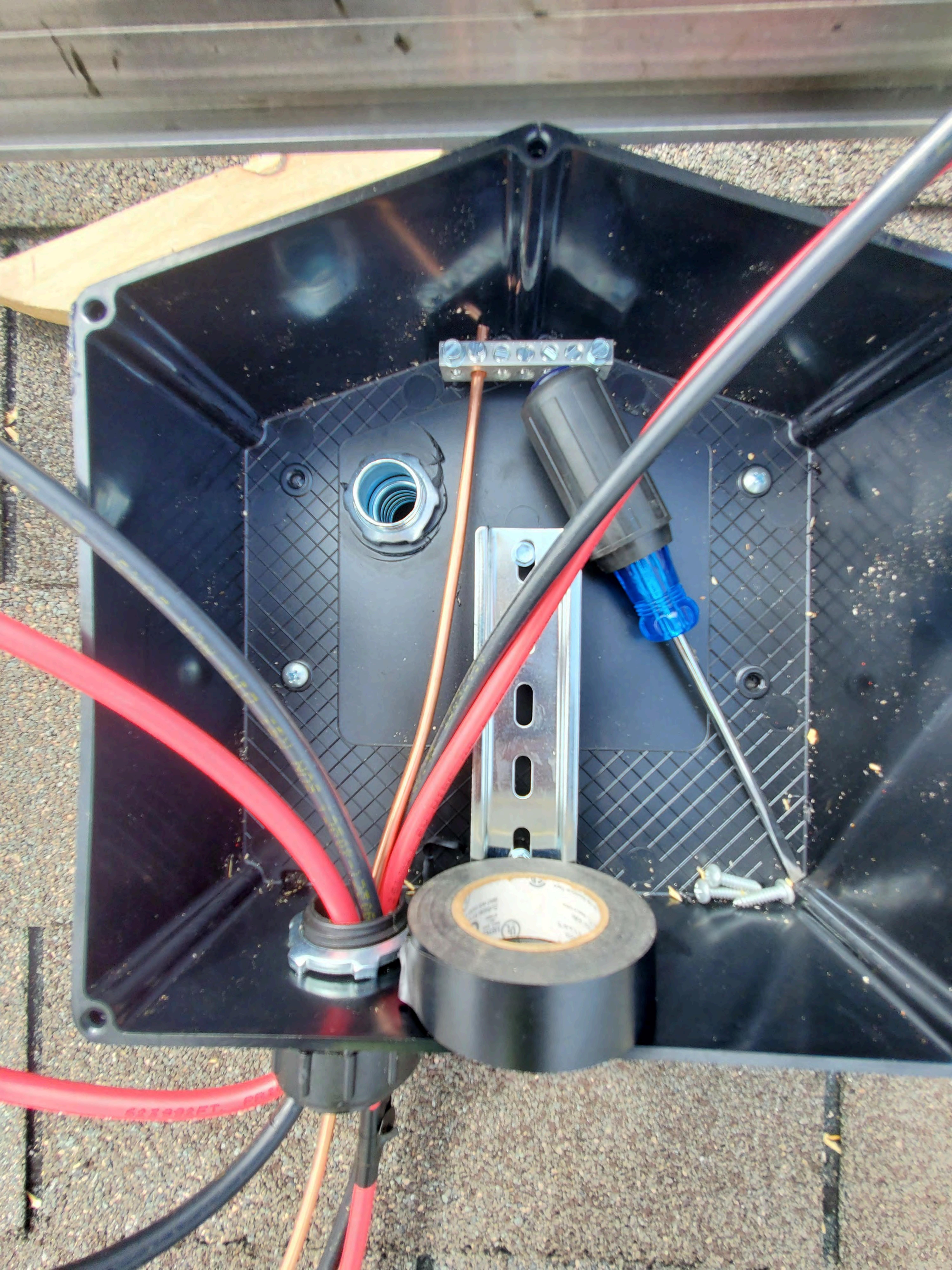


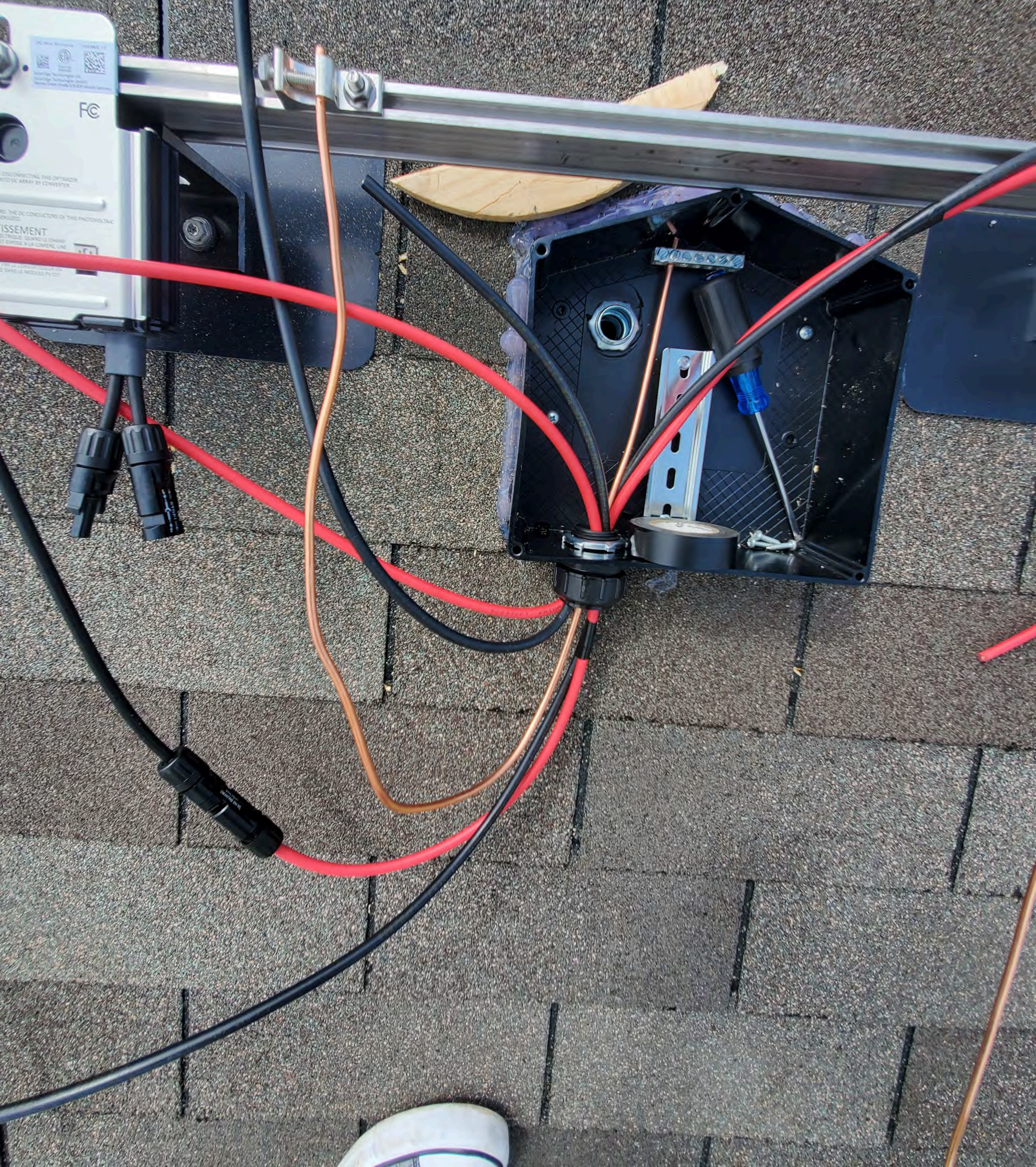










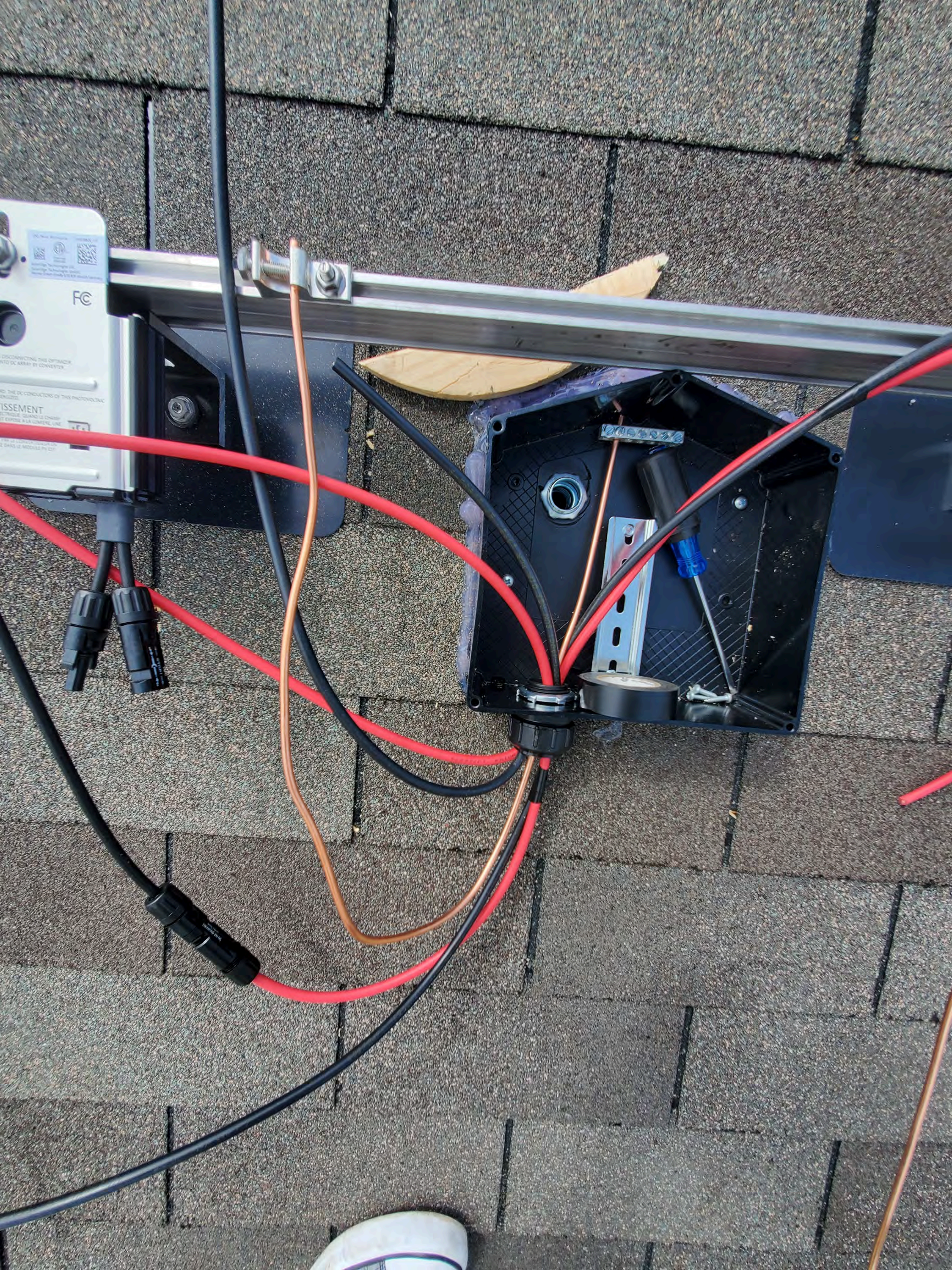


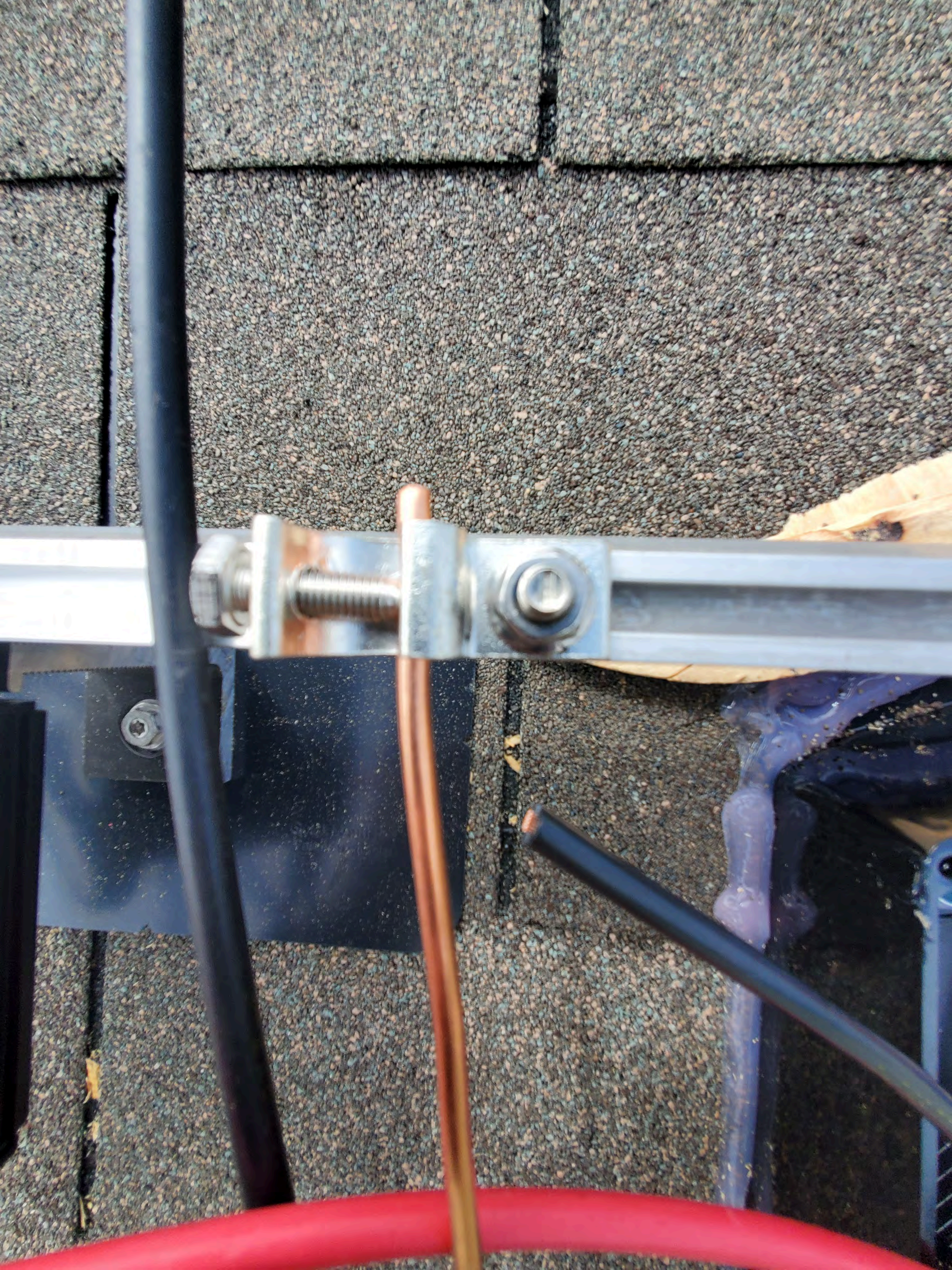
FC
DISCONNECTING THIS OPTIMIZER
FROM DC ARRAY BY CONVERTER
DANGER: ELECTRIC SHOCK
RISK OF FIRE
RISQUE D'ÉLECTROCUTION
RISQUE D'INCENDIE
NE PAS DÉCONNECTER CE
MODULE DU CÂBLAGE DE LA
CENTRALE PHOTOVOLTAÏQUE

MC4

MC4

FC
DISCONNECTING THIS OPTIMIZER
FROM DC ARRAY BY CONVERTER
DANGER: ELECTRIC SHOCK
RISQUE: CHOC ÉLECTRIQUE
NE PAS EXPOSER À LA LIGNE D'ÉNERGIE
ET À LA LIGNE DE MODULE PV COTÉ





Eric Champion
188 Chedworth Dr
Angier NC 27501

MAX. DC VOLTAGE 3000 VDC/100 AMPS
MAX. AC RATING 480 VAC/100 AMPS
ALLOWABLE WIRE 14-6 AWG
ARRANG. CAPACITANCE TIME 350 - 6750



Instronk
6619542

NEMA 3R

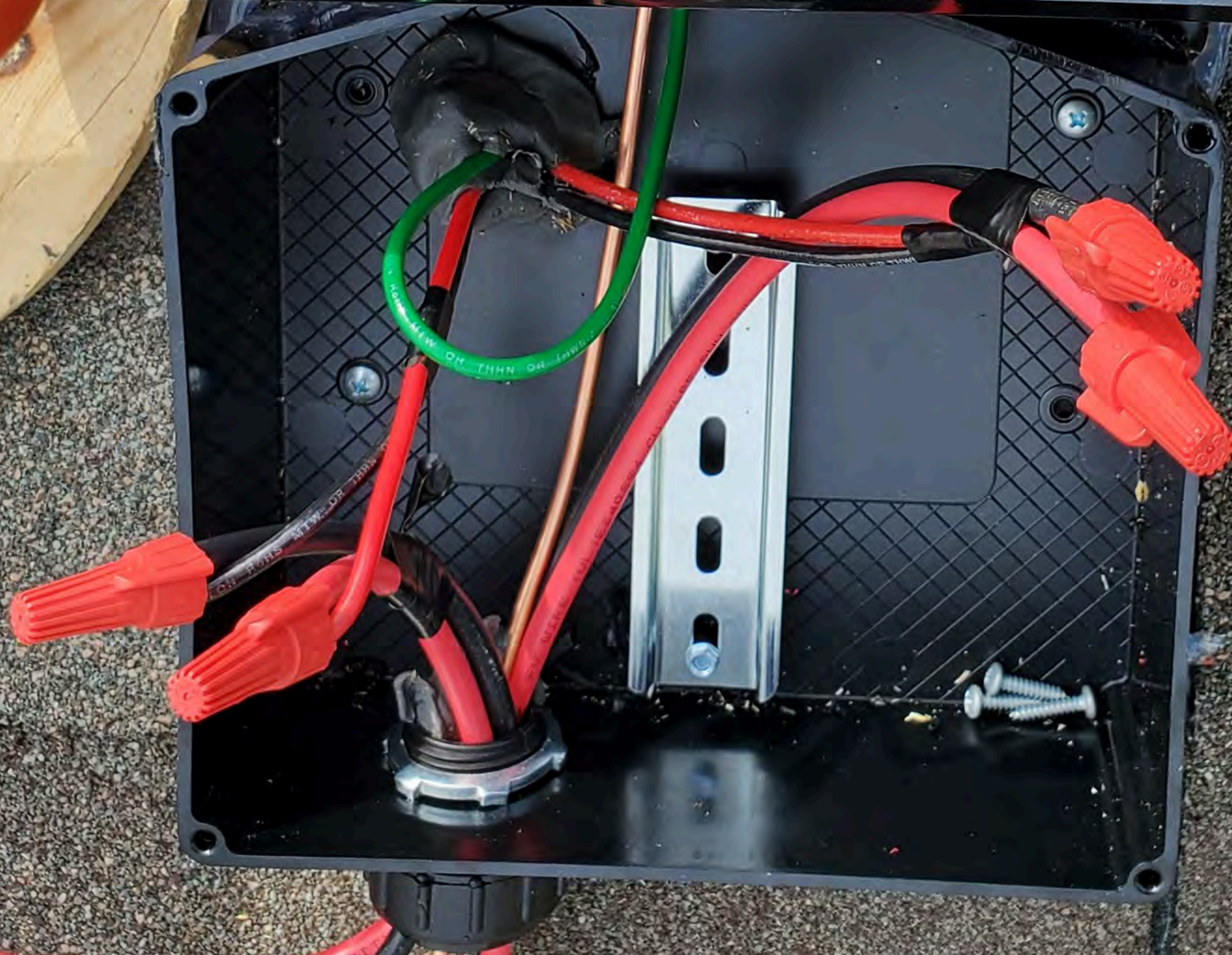
WARNING!



RISK OF ELECTRICAL SHOCK, DC OR AC VOLTAGE SOURCES ARE CONNECTED TO THE EQUIPMENT. EACH CIRCUIT MUST BE INDIVIDUALLY DISCONNECTED BEFORE SERVICING AND WHEN THE PHOTOVOLTAIC ARRAY IS EXPOSED TO LIGHT, IT SUPPLIES VOLTAGE TO THE EQUIPMENT.

Phil
Steven
Justin

REFER TO INSTALLATION MANUAL
VOLUME 200 FOR RANGES
TORQUE FOR ALL SCREWS & BOLTS: 15-20 LB-IN
CONFORMS TO UL STANDARD 1741



Eric Champion
188 Chedworth Dr
Angier NC 27501

MAX. DC VOLTAGE 300VDC/100 AMPS
MAX. AC RATING 480 VAC/100 AMPS
ALLOWABLE WIRE 14-6 AWG
ARRANG. CAPACITANCE TIME 350 - 6750



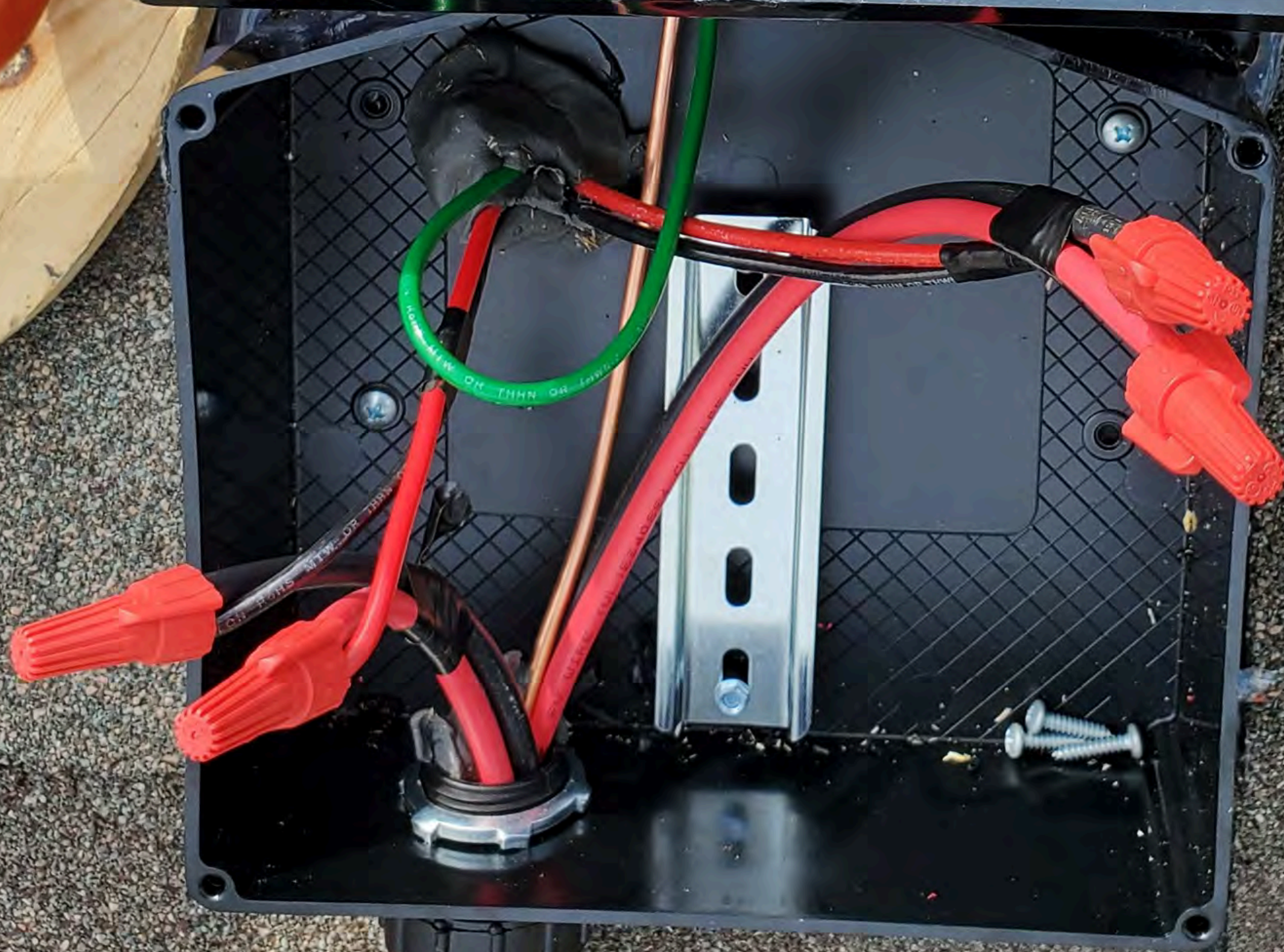
Instronk
6619542 NEMA 3R

WARNING! 

RISK OF ELECTRICAL SHOCK, DC OR AC VOLTAGE SOURCES ARE CONNECTED BEHIND THE EQUIPMENT. EACH CIRCUIT MUST BE INDIVIDUALLY DISCONNECTED BEFORE SERVICING AND WHEN THE PHOTOVOLTAIC ARRAY IS EXPOSED TO LIGHT, IT SUPPLIES VOLTAGE TO THE EQUIPMENT.


Phil
Steven
Justin

REFER TO INSTALLATION MANUAL
VOLUME 200 CU INCHES
TORQUE FOR ALL SCREWS & BOLTS: 15-20 LB-IN
CONFORMS TO UL STANDARD 1741



Eric Champion
188 Chedworth Dr
Angier NC 27501

MAX DC RATINGS _____ 1000 VDC/120 AMPS
MAX AC RATINGS _____ 480 VAC/120 AMPS
ALLOWABLE WIRE _____ 14-6 AWG
AMBIENT OPERATING TEMP _____ -35C - +75C

WARNING! 

RISK OF ELECTRICAL SHOCK, DC OR AC VOLTAGE SOURCES ARE CONNECTED INSIDE THIS EQUIPMENT. EACH CIRCUIT MUST BE INDIVIDUALLY DISCONNECTED BEFORE SERVICING AND WHEN THE PHOTOVOLTAIC ARRAY IS EXPOSED TO LIGHT, IT SUPPLIES VOLTAGE TO THIS EQUIPMENT.



Intertek
5019942

NEMA 3R


Phil
Steven
Justin

REFER TO INSTALLATION MANUAL
VOLUME 200 CU INCHES
TORQUE FOR ALL SCREWS & BOLTS: 15-20 LB-IN
CONFORMS TO UL STANDARD 1741



Eric Champion
188 Chedworth Dr
Angier NC 27501

MAX DC RATINGS _____ 1000 VDC/120 AMPS
MAX AC RATINGS _____ 480 VAC/120 AMPS
ALLOWABLE WIRE _____ 14-6 AWG
AMBIENT OPERATING TEMP _____ -35C - +75C

WARNING! 

RISK OF ELECTRICAL SHOCK, DC OR AC VOLTAGE SOURCES ARE CONNECTED INSIDE THIS EQUIPMENT. EACH CIRCUIT MUST BE INDIVIDUALLY DISCONNECTED BEFORE SERVICING AND WHEN THE PHOTOVOLTAIC ARRAY IS EXPOSED TO LIGHT, IT SUPPLIES VOLTAGE TO THIS EQUIPMENT.



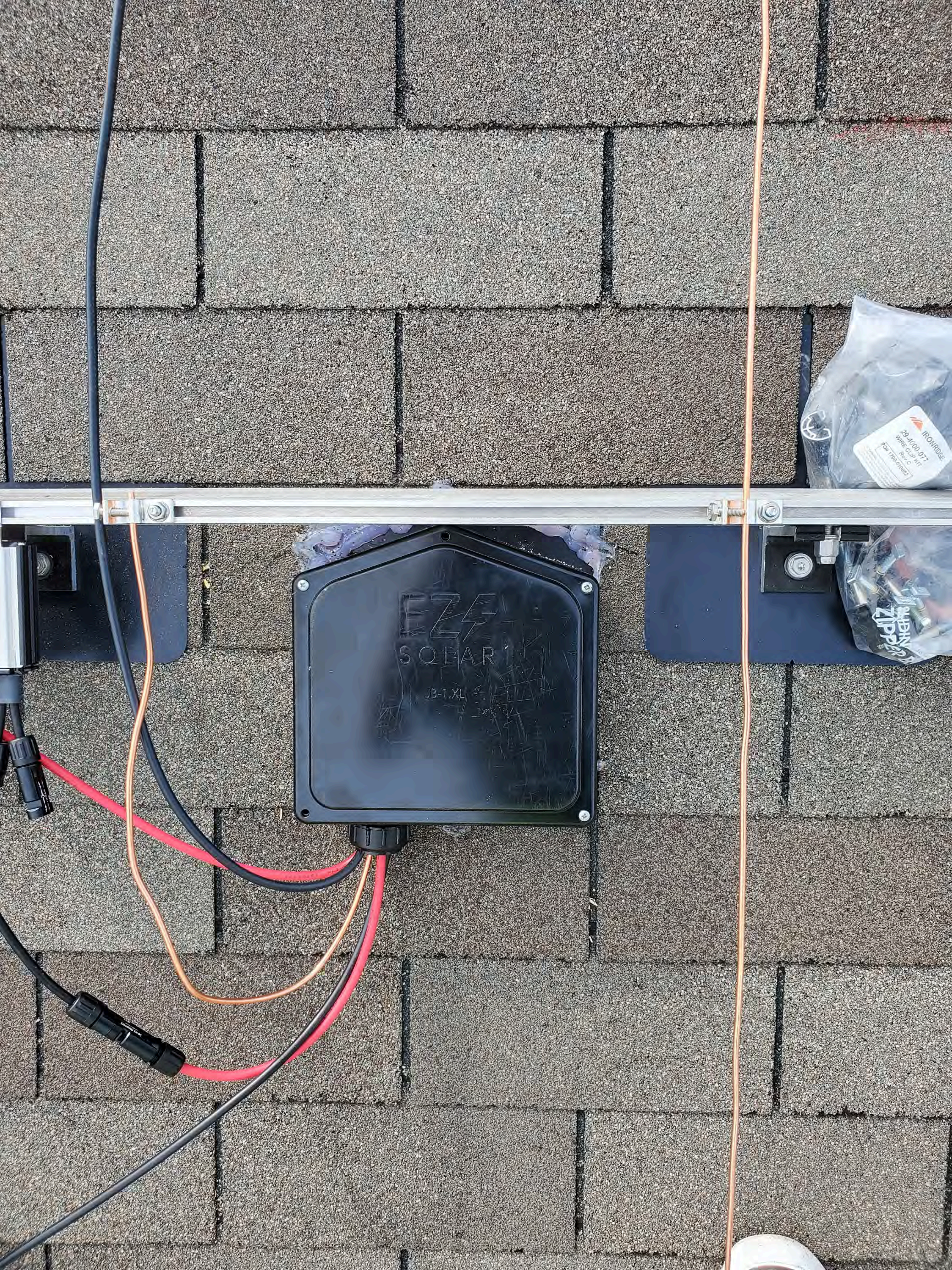
Intertek
5019942

NEMA 3R

Phil
Steven
Justin

REFER TO INSTALLATION MANUAL
VOLUME 200 CU INCHES
TORQUE FOR ALL SCREWS & BOLTS: 15-20 LB-IN
CONFORMS TO UL STANDARD 1741

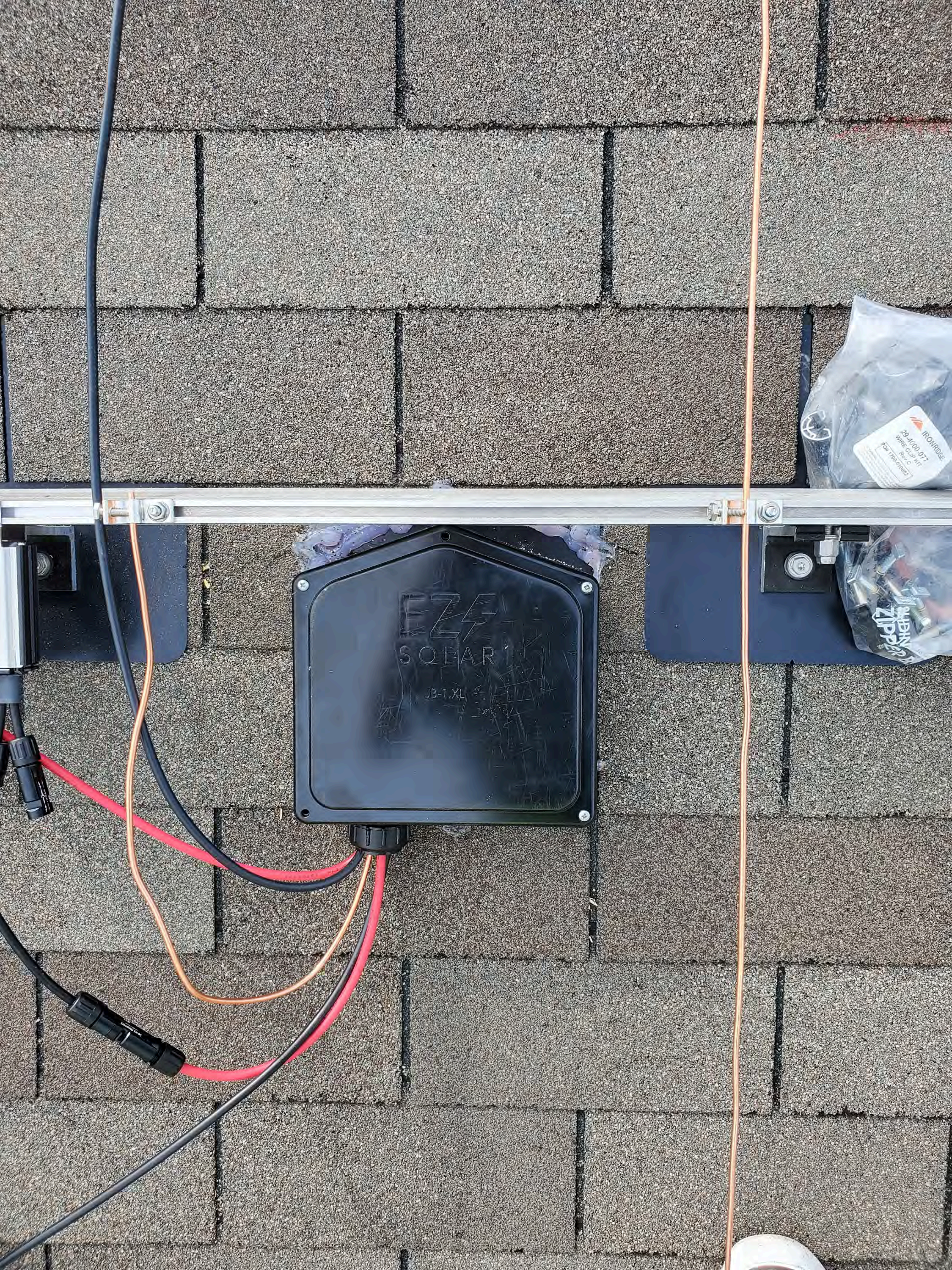




EZ
SOLAR
JB-1.XL

IRONRIDGE
20'x100' 077
Wire-Cup Kit
For 1700-07000

ZIPPIN



EZ
SOLAR
JB-1.XL

IRONRIDGE
20'x100' 017
Wire-Cup Kit
For 1700-01000

IRONRIDGE













VS22212140074H

VSUN
Innovative & Smart
Photovoltaic Module

Module Type: VSUN405-108BMH			
Maximum Power(P _{mp} -Front)	405W	Tolerance of P _{mp}	±3%
Open Circuit Voltage(V _{oc} -Front)	37.36V±3%	Series Fuse Rating	30A
Short Circuit Current(I _{sc} -Front)	13.78A±3%	Max System Voltage	1500V
Maximum Power Voltage(V _{mpp} -Front)	31.36V	Weight	21.4kg
Maximum Power Current(I _{mp} -Front)	12.92A	Dimension:	1722×1134×30(mm)
Power Sorting	0~±5W	STC	1000W/m ² , 25°C, AM1.5
PV module classification: Type 1(For USA only)Class C(For Canada only)		MADE IN VIETNAM	



UL 61730 & CSA 61730
See Installation Instructions for
Installation Requirements to Achieve a
Specified System Fire Class Rating with
this Product.



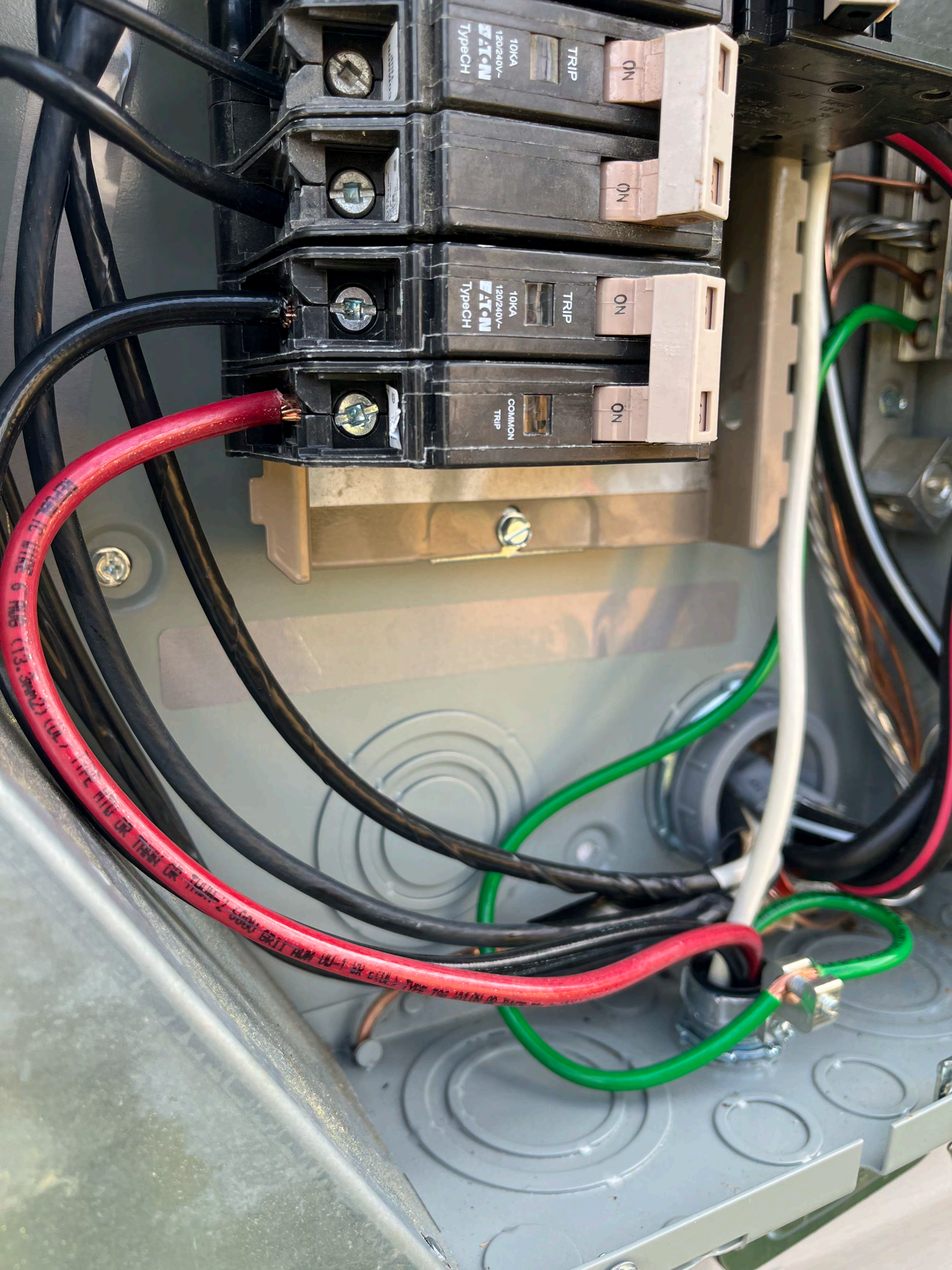
WARNING
Hazardous Electricity
Can shock, burn or cause
death. Do not touch
Terminals.

AVERTISSEMENT
L'électricité dangereuse
peut le faire Choc brûlures
ou décès. Ne touchez pas le
terminal.



VIETNAM SUNERGY JOINT STOCK COMPANY





10KA
120/240V~
Eaton
Type CH

TRIP

ON

10KA
120/240V~
Eaton
Type CH

TRIP

ON

COMMON
TRIP

ON

ELECTRICAL
FIBER OPTIC WIRE 6 AWG (13.3mm²) (UL) TYPE MV OR TRIP OR
ELECTRICAL WIRE 6 AWG (13.3mm²) (UL) TYPE MV OR TRIP OR

ELECTRICAL



10 AWG (5.29 mm) CU 600 V W-1 OR C

1011 BODY

PHOTOVOLTAIC SYSTEM



AC DISCONNECT



OPERATING VOLTAGE

240

VOLTS

OUTPUT CURRENT

26A

AMPS

ELETRICO RIGIDO D

PV SYSTEM DC DISCONNECT

MAXIMUM VOLTAGE

480

MAXIMUM CIRCUIT CURRENT

30

MAXIMUM RATED OUTPUT
CURRENT OF THE CHARGE
CONTROLLER OR DC TO DC
CONVERTER (IF INSTALLED)

15

pvlabels.com 03-307

solar edge